

Annex A

RESETTLEMENT IN THE PROJECT CONTEXT

This Annex is based on presentations made at both the Manila and Port Vila Workshops by Susanna Price of the Social Development Division of ADB. Those presentations followed closely the outline provided in the ADB Handbook on Resettlement: A Guide to Good Practice, from which the relevant tables have been excerpted.

Procedures Followed by Development Banks in Resettlement

As is more fully set out in Annex B, the project terminology used by ADB and the World Bank are slightly different. For instance, the basic steps followed in preparing and implementing resettlement projects can be compared. They are:

Asian Development Bank	World Bank
Initial Social Assessment (ISA)	
Project Preparation Technical Assistance (PPTA)	Feasibility, including Environmental Impact Assessment
Loan Fact Finding	Project Pre-Appraisal
Loan Appraisal	Project Appraisal
Loan Negotiation	Loan Negotiation
Board Approval	Approval
Project Implementation	Project Implementation
Bank Supervision	Bank Supervision
Project Completion	Project Completion
(and, in some cases, detailed impact evaluations or project audits follow.)	

From the experience of ADB, Price showed the key points at which planning for resettlement is addressed in the ADB project cycle. Resettlement parameters are first identified in the ISA and detailed planning is undertaken in the PPTA Feasibility Study. The draft RRP (Report and Recommendation of the President) which goes to the ADB senior management and, subsequently, the Bank's Board of Directors for approval must include a summary resettlement plan.

In the case of ADB resettlement projects all "significant" cases require the documenting of a full Resettlement Plan (or Resettlement Action Plan, as termed by the World Bank) and this must be completed before the appraisal process can be completed. Significant projects have more than 200 affected people or lesser numbers but of vulnerable (100) or particularly vulnerable (50) persons. In other cases, a much simpler statement of what will be required is sufficient.

Asian Development Bank Staff Guidance

All these matters are very fully dealt with in the ADB *Handbook on Resettlement: A Guide to Good Practice*. The remainder of this Annex has been excerpted from that handbook and provides an overview of the ways in which the many special elements of a resettlement project are accommodated in the standard project practices of the Bank. For ease of reference, the box and table numbers used here are those of the *Handbook*.

When is Resettlement Significant?

Concepts	Box 2.1
Significant Resettlement	Table 2.1
Insignificant Resettlement	Table 2.2

What goes into a Resettlement Plan?

Full Resettlement	Table 2.4
Short Resettlement	Table 2.5

What are the Key Action Points in Resettlement Projects?

Land Acquisition	Table 2.7
Consultation and Participation	Table 4.2
Data Collection and Surveys	Table 5.2
Physical Relocation	Table 6.2
Income Restoration	Figure 7.1
Institutional Framework	Table 8.1
Monitoring and Evaluation	Table 9.4

Box 2.1

Concept of Significance in Resettlement

“Significant” is defined as meaning:

- 200 people or more will experience resettlement effects;
- or vulnerable as defined in the policy (for example, female-headed households, the poorest, isolated communities, including those without legal title to assets and pastoralists); or
- more than 50 people experiencing resettlement effects are particularly vulnerable, for example, hunter-gatherers. The Projects Department concerned would decide, in consultation with the Social Development Division (SOCD), if a full Resettlement Plan is required.

Table 2.1
Full Resettlement Plan — Significant Resettlement

Severity	Number of Affected Persons	Requirement
Loss of productive and other assets (including land), incomes and livelihoods	200 plus	<ul style="list-style-type: none"> □ Compensation at replacement costs, transfer and income substitution for down item, income restoration measures
Loss of housing, community structures, systems and services	200 plus	<ul style="list-style-type: none"> □ Compensation at replacement rates, transfer assistance and relocation plans, measures to restore living standards
Loss of household or community resources, habitat, sites	200 plus	<ul style="list-style-type: none"> □ Replacement if possible, restoration, compensation
APs are indigenous people or in some other way vulnerable, e.g. the poorest, isolated communities, households headed by women, those without legal title to assets, pastoralists	100 plus	<ul style="list-style-type: none"> □ Social preparation phase—special measure might be required to ensure full rehabilitation
Cases of “insignificant” resettlement having special target group or other sensitivities	50 plus	<ul style="list-style-type: none"> □ For example, 50 hunter-gatherers require a full RP □ Social preparation phase—special measures might be required to ensure full rehabilitation <p><i>For projects in this category:</i></p> <ul style="list-style-type: none"> □ Inform government and other project sponsors on ADB’s resettlement policy. □ Assist government in implementing ADB’s resettlement policy within their own legal and institutional framework. □ Strengthen capacity of government and other project sponsors to plan and implement resettlement. □ Help strengthen national macro framework for resettlement. □ Resolve any outstanding differences with ADB’s policy. □ Assist government or other project sponsors to prepare a RP before loan appraisal. □ Prepare a summary RP for draft RRP for MRM and for RRP for Board circulation, based on Full RP. □ Include information on resettlement in the project profile.

APs = affected persons, MRM = Management Review Meeting, RRP = Report and Recommendation of the President.

Table 2.2
Short Resettlement Plan — Insignificant Resettlement

Severity	Number of Affected Persons	Requirement
Loss of productive and other (including land) incomes and livelihoods	below 200	□ Compensation at replacement costs, transfer and income substitution for down time, income restoration measures
Loss of housing, community structures, systems, and services	below 200	□ Compensation at replacement rates, transfer assistance and relocation plans, measures to restore living standards
Loss of household or community resources, habitat, sites	below 200	□ Replacement if possible, restoration, compensation
APs are indigenous people or in some other way vulnerable, e.g., the poorest, isolated communities, households headed by women, those without legal title to assets, pastoralists	below 100	□ Social preparation phase—special measures might be required to ensure full rehabilitation.
APs have special sensitivities or are particularly vulnerable	below 50	□ Social preparation phase—special measures might be required to ensure full rehabilitation. <i>For projects in this category:</i> Prepare summary RP for draft RRP for MRM and for RRP for Board circulation, based on short RP.

APs = affected persons, MRM = Management Review Meeting, RP = Resettlement Plan, RRP = Report and Recommendation of the President.

Table 2.4
Full Resettlement Plan : A Recommended Outline

Topic	Content
Scope of land acquisition and resettlement	<ul style="list-style-type: none"> □ Describe with the aid of maps, scope of land acquisition and why it is necessary for main investment project. □ Describe alternative options, if any considered to minimize land acquisition and its effects, and why remaining effects are unavoidable. □ Summarize key effects in terms of land acquired, assets lost, and people displaced from homes or livelihoods. □ Specify primary responsibilities for land acquisition and resettlement.
Socioeconomic information	<ul style="list-style-type: none"> □ Define, identify and enumerate people to be affected. □ Describe likely impact of land acquisition on people affected, taking into account social, cultural, and economic parameters. □ Identify all losses for people affected by land acquisition. □ Provide details of any common property resources. □ Specify how project will impact on the poor, indigenous people, ethnic minorities, and other vulnerable groups, including women, and any special measures needed to restore fully, or enhance, their economic and social base.
Objectives, policy framework, and entitlements	<ul style="list-style-type: none"> □ Describe purpose and objectives of land acquisition and resettlement. □ Describe key national and local land, compensation and resettlement policies, laws, and guidelines that apply to project. □ Explain how ADB's policy on Involuntary Resettlement will be achieved. □ State principles, legal and policy commitments from borrower executing agency for different categories of project impacts. □ Prepare an eligibility policy and entitlement matrix for all categories of loss, including compensation rates.
Consultation, and grievance redress participation	<ul style="list-style-type: none"> □ Identify project stakeholders. □ Describe mechanisms for stakeholder participation in planning, management, monitoring and evaluation.

Table 2.4
Full Resettlement Plan : A Recommended Outline (cont'd.)

Topic	Content
Relocation of housing and settlements	<ul style="list-style-type: none"> □ Identify local institutions or organizations to support people affected. □ Review potential role of nongovernment organizations and community-based organizations. □ Establish procedures for redress of grievances by people affected. □ Identify options for relocation of housing and other structures, including replacement housing, replacement cash compensation, and self-selection □ Specify measures to assist with transfer and establishment at new sites. □ Review options for developing relocation sites, if required, in terms of location, quality of site, and development needs. □ Provide a plan for layout, design, and social infrastructure for each site. □ Specify means for safeguarding income and livelihoods. □ Specify measures for planned integration with host communities. □ Identify special measures for planned integration with host communities. □ Identify any environmental risks and show how these will be managed and monitored.
Income restoration strategy	<ul style="list-style-type: none"> □ Identify livelihoods at risk. □ Develop an income restoration strategy with options to restore all types of livelihoods. □ Specify job opportunities in a job creation plan, including provisions for income substitution, retraining, self-employment and pensions, where required. □ Prepare a plan to relocate and restore businesses, including income substitution, where required. □ Identify any environmental risks and show how these will be managed and monitored.
Institutional framework	<ul style="list-style-type: none"> □ Identify main tasks and responsibilities in planning, negotiating, consulting, approving, coordinating, implementing, financing, monitoring and evaluating land acquisition and resettlement. □ Review the mandate of the land acquisition and resettlement agencies and their capacity to plan and manage these tasks. □ Provide for capacity building, including technical assistance, if required. □ Specify role of nongovernment organizations, if involved, and organizations of affected persons in resettlement planning and management.

Table 2.4
Full Resettlement Plan : A Recommended Outline *(cont'd.)*

Topic	Content
Resettlement budget and financing	<ul style="list-style-type: none"> □ Identify land acquisition and resettlement costs. □ Prepare an annual budget and specify timing for release of funds. □ Specify sources of funding for all land acquisition and resettlement activities.
Implementation schedule	<ul style="list-style-type: none"> □ Provide a time schedule showing start and finish dates for major resettlement tasks. □ Show how people affected will be provided for before demolition begins. □ Prepare a plan for internal monitoring of resettlement targets, specifying key indicators for progress, mechanisms for reporting, and resource requirements. □ Prepare an evaluation plan, with provision for external, independent evaluation of extent to which policy objectives have been achieved. □ Specify participation for people affected in monitoring and evaluation.

Table 2.5
Short Resettlement Plan: A Recommended Outline

Topic	Content
Scope of land acquisition and resettlement	<ul style="list-style-type: none"> □ Describe alternate options, if any considered to minimize land acquisition and its effects; and why the remaining effects are unavoidable. □ Summarize key effects in terms of land acquired, assets lost, and people displaced from homes or livelihoods.
Objectives, policy framework, and entitlements	<ul style="list-style-type: none"> □ Describe key national and local land, compensation and resettlement policies, laws, and guidelines that apply to project. □ Explain how ADB policy on Involuntary Resettlement will be achieved.
Consultation, , and grievance redress participation	<ul style="list-style-type: none"> □ Describe consolation processes and procedures for redress of grievances.
Compensation, relocation, and income restoration	<ul style="list-style-type: none"> □ Describe arrangements for valuing and disbursing compensation. □ Describe arrangements for housing relocation, including transfers and establishment. □ Describe income restoration measures to be implemented. □ Identify any environmental risks, describe management and monitoring steps.
Institutional framework	<ul style="list-style-type: none"> □ Identify main tasks and responsibilities in planning, managing and monitoring land acquisition and resettlement.
Resettlement budget and financing	<ul style="list-style-type: none"> □ Identify land acquisition and resettlement costs and funding sources.
Implementation schedule	<ul style="list-style-type: none"> □ Provide time schedule showing how people affected will be provided for before demolition begins.
Monitoring and evaluation	<ul style="list-style-type: none"> □ Specify arrangements for monitoring and evaluation.

Table 2.7

Land Acquisition and Resettlement in the Project Cycle: Key Action Points

Stage in Project Cycle	Responsibility	Key Action Point
Initial Social Assessment PPTA Fact-Finding or earlier	Mission Leader (Consultant)	<ul style="list-style-type: none"> □ Review land acquisition laws and compensation policies to assess whether they meet ADB requirements. □ Inform government and other project sponsors of ADB policy. □ Identify areas for policy improvement. □ Identify any people affected by land acquisition, their key characteristics, and types of losses. □ Determine if social preparation is needed □ Identify resettlement institutions and their capacities. □ Assess options to reduce or avoid resettlement □ Prepare TORs for RP, if resettlement is likely. □ Determine whether resettlement effects are likely to be significant.
PPTA Feasibility Study	Consultant with DMC resettlement planners	<ul style="list-style-type: none"> □ Develop new eligibility policy to cover all APs □ Discuss basic resettlement principles with project management. □ Establish parameters for RP. □ Draft full or short RP with time-bound actions and budgets. □ Build plan around a development strategy with compensation, relocation, and rehabilitation measures. □ Give special consideration to indigenous peoples and other vulnerable groups. □ Include social preparation for people affected when resettlement is likely to cause social unrest or APs are especially vulnerable groups. □ Include social preparation for people affected, when resettlement is likely to cause social unrest or APs are especially vulnerable. □ Prepare entitlement matrix. □ If resettlement is significant, develop measures to strengthen DMC capacity to implement resettlement.
Draft RRP for the MRM	Mission Leader, SOCD	<ul style="list-style-type: none"> □ Include summary RP in consultation with SOCD.

Table 2.7
Land Acquisition and Resettlement in the Project Cycle: Key Action Points

Stage in Project Cycle	Responsibility	Key Action Point
Before appraisal	Government or private project sponsor	□ Submit the RP to ADB.
Appraisal	Mission Leader	□ Review RP with EA.
Final RRP for Board circulation	Mission Leader, SOCD	□ Include a summary RP.
Project Profile	Mission Leader	□ Include resettlement details from ISA and RP if resettlement is significant.

APs = affected persons, DMC = developing member countries, EA = Executing Agency, ISA = Initial Social Assessment, MRM = Management Review Meeting, PPTA = Project Preparatory Technical Assistance, RP = Resettlement Plan, RRP = Report and Recommendation of the President, SOCD = Social Development Division, TOR = Terms of Reference.

Table 4.2
Consultation and Participation in the Project Cycle: Key Action Points

Project Cycle	Key Action Points
Project Identification/ISA	<ul style="list-style-type: none"> □ Identify stakeholders. □ Identify vulnerable groups. □ Involve stakeholders and vulnerable groups in consultative processes. □ Prepare information campaign and plans for dissemination. □ Organize public meetings. □ Decide on the need for social preparation phase.
PPTA Feasibility Study	<ul style="list-style-type: none"> □ Convene consultative meetings with APs/host communities. □ Arrange AP inputs to entitlements, income restoration, and resettlement options. □ Institutionalize a participatory framework for compensation, income restoration and resettlement. □ Design social preparation phase, if required. □ Obtain AP/NGO inputs to development of resettlement sites. □ Involve APs income restoration strategies. □ Establish grievance redress procedures.
MRM	<ul style="list-style-type: none"> □ Ensure APs and NGOs have provided inputs to the resettlement planning process. □ Ensure that project management has carried out consultative processes.
Appraisal	<ul style="list-style-type: none"> □ Review participatory mechanisms outlined in the RP. □ Arrange participation of local NGOs or CBOs in implementation.
Loan Negotiation	<ul style="list-style-type: none"> □ List any outstanding issues as conditions and compliance for loan effectiveness.
Implementation	<ul style="list-style-type: none"> □ Ensure that grievance that grievance procedures are functional. □ Involve APs in implementation. □ Involve NGOs and CBOs in implementation.
Monitoring and Evaluation	<ul style="list-style-type: none"> □ Involve APs and NGOs in both M&E.

AP = affected person, CBOs = community-based organizations, ISA = Initial Social Assessment, M & E = monitoring and evaluation, MRM = Management Review Meeting, NGO = nongovernment organization, PPTA = Project Preparatory Technical Assistance.

Table 5.2
Data Collection and Surveys in the Project Cycle: Key Action Points

Project Cycle	Key Action Point
Project Identification/ISA	<ul style="list-style-type: none"> □ Review existing data. □ Determine level and amount of information required. □ Clearly establish purpose of data collection for resettlement planning, monitoring, and evaluation.
PPTA Feasibility Study	<ul style="list-style-type: none"> □ Draw up TOR for data collection. □ Identify expertise required. □ Commission data collection and agree upon implementation arrangements and reporting requirements. □ Draft report on the findings of the data collection. □ Publish preliminary list of APs. □ Draft programs for income restoration and relocation of the APs. □ Prepare M&E plan for resettlement based on baseline survey or census.
MRM	<ul style="list-style-type: none"> □ Review prepared RP (based on results of data collection). □ Conduct follow-up survey of APs, if update is necessary. □ Prepare income restoration and indigenous peoples development plans (if appropriate).
Appraisal	<ul style="list-style-type: none"> □ Finalize RP.
Loan Negotiation	<ul style="list-style-type: none"> □ Include outstanding issues as condition for loan effectiveness.
Implementation	<ul style="list-style-type: none"> □ Establish computerized data bank on APs for implementation and monitoring purposes. □ Involve AP groups and NGOs in implementation. □ Conduct follow-up surveys for M&E.
Monitoring and Evaluation	<ul style="list-style-type: none"> □ Monitor progress for reporting purposes. □ Use PRA, focus group meetings, and surveys for M&E purposes. □ Conduct external independent evaluation through evaluation survey.

APs = affected persons, M & E = monitoring and evaluation, NGO = nongovernment organization, PPTA = Project Preparatory Technical Assistance, PRA = participatory rapid appraisal, RP = Resettlement Plan, TOR = Terms of Reference.

Table 6.2
Relocation in the Project Cycle: Key Action Points

Stage	Key Action Point
Project Identification/ISA	<ul style="list-style-type: none"> □ Consider various alternate settlement options. □ Minimize loss of housing where feasible.
PPTA Feasibility Study	<ul style="list-style-type: none"> □ Identify other options including self-relocation. □ Identify relocation sites. □ Conduct feasibility study of the sites. □ Involve APs and hosts in site selection. □ Draft RP for review and comments.
MRM	<ul style="list-style-type: none"> □ Review RP. □ Review budget and sources of funding. □ Review RP and targets.
Appraisal	<ul style="list-style-type: none"> □ Verify all preparations for relocation.
Loan Negotiation	<ul style="list-style-type: none"> □ Include an outstanding issue as conditions.
Implementation	<ul style="list-style-type: none"> □ Develop all infrastructure and social and civic amenities. □ Involve APs, hosts, and NGOs (if appropriate) in implementation. □ Involve women and women's groups in the development of layout and all social amenities at sites. □ Pay allowances and transfer costs.
Monitoring and Evaluation	<ul style="list-style-type: none"> □ Implement monitoring by the resettlement agency. □ Conduct independent evaluation of relocation performance.

AP = affected person, ISA = Initial Social Assessment, MRM = Management Review Meeting, NGO = nongovernment organization, PPTA = Project Preparatory Technical Assistance, RP = Resettlement Plan.

Figure 7.1
Identifying Income Restoration Programs

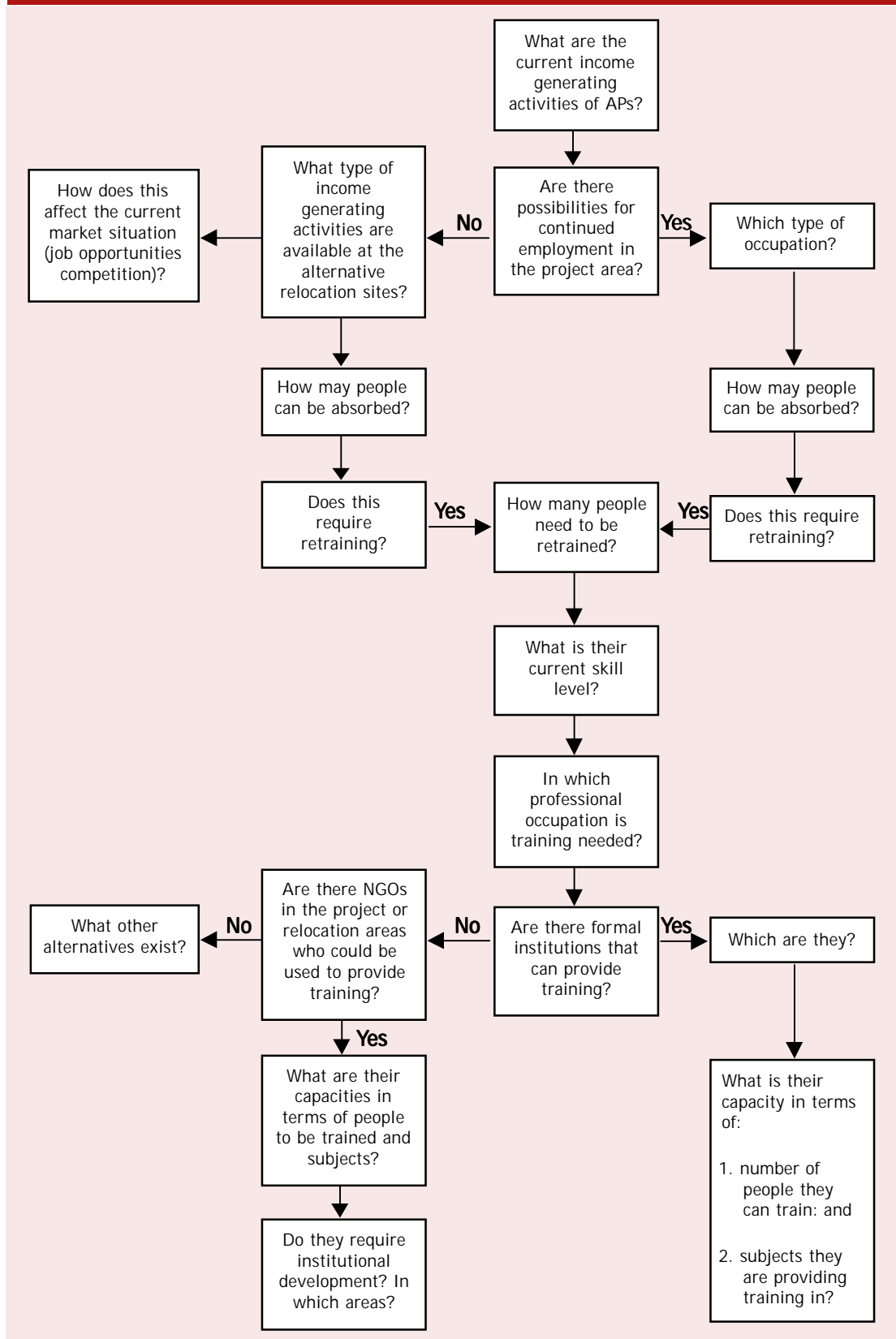


Table 8.1

Institutional Framework in the Project Cycle: Key Action Points

Project Cycle	Key Action Point
Project Identification/ISA	<ul style="list-style-type: none"> □ Identify scope of resettlement, number of APs directly or indirectly affected. □ Assess the capacity and mandate of institutional framework for resettlement.
PPTA Feasibility Study	<ul style="list-style-type: none"> □ Review institutional framework for resettlement, identifying any gaps. □ Establish a resettlement unit or agency, if necessary. □ Assess staff requirements and institutional capacity. □ Provide for staff development, TA for capacity building, if required. □ Consult with stakeholders (APs, NGOs, hosts). □ Provide financial and budgetary provisions for resettlement through annual budget allocation.
MRM	<ul style="list-style-type: none"> □ Provide financial and budgetary provision for resettlement through annual budget allocation. □ Review institutional framework in RP.
Appraisal	<ul style="list-style-type: none"> □ Verify if institutional framework meets Bank's standards and policies.
Loan Negotiation	<ul style="list-style-type: none"> □ Prepare TA for capacity building, if required. □ Complete any other outstanding issues.
Implementation	<ul style="list-style-type: none"> □ Select and place resettlement field staff. □ Involve NGOs in resettlement project implementation. □ Involve village workers in implementation. □ Implement capacity building measures.
Monitoring and Evaluation	<ul style="list-style-type: none"> □ Involve NGOs in monitoring. □ Carry out in-house monitoring monthly or quarterly, as indicated in the RP. □ Evaluate resettlement impact using external agencies.

AP = affected person, ISA = Initial Social Assessment, MRM = Management Review Meeting, NGO = nongovernment organization, PPTA = Project Preparatory Technical Assistance, RP = Resettlement Plan, TA = Technical Assistance.

Table 9.4
Data Collection and Surveys in the Project Cycle: Key Action Points

Project Cycle	Key Action Point
Project Identification/ISA	<ul style="list-style-type: none"> □ Conduct ISA as basis for future resettlement planning, monitoring, and evaluation. □ Identify project area.
PPTA Feasibility Study	<ul style="list-style-type: none"> □ Consult with all stakeholders. □ Conduct baseline with census and survey. □ Establish an M&E plan as an integral part of the Resettlement Plan, involving internal and external resources, building on the established baseline.
MRM	<ul style="list-style-type: none"> □ Review M&E plans for inter-agency coordination of activities. □ Review budget and resources.
Appraisal	<ul style="list-style-type: none"> □ Verify M&E plan will provide information on progress and achievement of resettlement objectives.
Loan Negotiation	<ul style="list-style-type: none"> □ Include M&E in the Assurances.
Implementation	<ul style="list-style-type: none"> □ Establish field level monitoring capability. □ Involve APs/hosts, and NGO in monitoring. □ Monitor internally progress in meeting targets for budget and time frame, delivery of AP entitlements, consultation, grievance, and special issues and benefits. □ Engage external, independent specialists to monitor and evaluate progress and achievement of resettlement objectives. □ Prepare regular reports on all aspects of M&E.
Monitoring and Evaluation	<ul style="list-style-type: none"> □ Conduct ex post evaluation of resettlement to assess the effectiveness, impact, and sustainability of resettlement entitlements; and to learn strategic lessons for future policy formulation and planning.

AP = affected persons, ISA = Initial Social Assessments, M & E = monitoring and evaluation, NGO = nongovernment organization, PPTA = Project Preparatory Technical Assistance.

LIST OF ITEMS ELIGIBLE FOR WORLD BANK FINANCING

Cost Category	Description of Cost Item	Cost Variable	Availability of World Bank Fund	Remark
Planning and Design	Policy Framework and Preparation	Costs for planning and design, surveys and RAP preparation will vary depending upon the TOR of consultant and the degree of role played by project authorities in these activities	PPF or Trust Funds (existing loans) PHRD (World Bank)	If surveys and RAP preparation is contracted to a consultant, the costs are between US\$70-100 per affected family
	Census/ Socioeconomic Surveys RAP Preparation			
Compensation Costs	Land Acquisition Agricultural	Quantities as recorded in the inventory and unit rates in accordance with the policy	Not available	
	Residential/ Commercial Land	Ditto	Ditto	Compensation for all affected land at replacement cost or direct in kind replacement
	Forest Land	Ditto	Ditto	
	Compensation for Structures	Ditto	When in kind, up to 100% cost of building materials construction cost	Compensation for structures at replacement without depreciation or deductions for salvaged material
	Standing Crops	Ditto	Not available	Compensation for affected crops and trees based at current market value
	Trees	Ditto	Ditto	
	Other Improvements (wells, graves, etc.)	Ditto	Ditto	Compensation at replacement cost or in kind replacement
Loss of business/incomes and employment	Losses as identified by socioeconomic surveys and provisions in the compensation policy	Ditto	Compensation for losses during the transition period in accordance with the policy	

AP = affected persons, PHRD = , PPF = Project Preparation Facility, RAP = Resettlement Action Plan, TA = Technical Assistance, TOR = Terms of Reference.

LIST OF ITEMS ELIGIBLE FOR WORLD BANK FINANCING

Cost Category	Description of Cost Item	Cost Variable	Availability of World Bank Fund	Remark
	Structures and equipments	Quantities as recorded in the inventory and compensation at replacement costs	Ditto	Compensation at replacement cost
	Loss of public infrastructure, power lines, roads and bridges, etc.	Losses as recorded in the inventory and compensation at replacement costs or actual cost of repairs	Ditto	Amount and form of compensation in cooperation with respective agency
Relocation Cost	Land for resettlement Agricultural or residential	Area of land required for will depend on the number of APs to be resettled and the current market rates	Not available	
	Development of resettlement site	Ditto	80% of cost to central and 90% of cost to local government	
	Provision of infrastructure facilities	Depending on the planning standards and cost at market rates	Up to 100% cost	
	Transport allowance	Census and amount as per policy	100% when in kind	A fixed amount per family or provision of transport
	House construction allowance and/or building material	Ditto	Up to 100% cost of building material	
	Subsistence allowance	Ditto	Not available	A fixed lumpsum amount per AP in cash or grains during the transition

LIST OF ITEMS ELIGIBLE FOR WORLD BANK FINANCING

Cost Category	Description of Cost Item	Cost Variable	Availability of World Bank Fund	Remark
	Community services (school, clinic, etc.)	Based on the planning standards and cost at market rates	Up to 100% of the cost	In consultation with the line agencies
	Environmental Enhancement (forestry, soil, conservation)	Area of land and level of environmental improvement required	Ditto	Ditto
Rehabilitation and Income Restoration Cost	Improvement of farmland, irrigation, drainage, etc.	Based on socioeconomic survey and individual APs need assessment	Up to 100% of the cost	
	Agriculture extension and farm inputs	Ditto	Ditto	
	Credit facilities	Ditto	Ditto	
	Job training	Ditto	Ditto	Coordination with training institutes for duration
	Employment measures	Ditto	Not available	Employment opportunities in the project
	Transition allowance	Census and amount as per policy	Ditto	A fixed lumpsum amount during the period
Technical Assistance	Training of project staff	Duration and cost as per TOR	100% under TA or from Trust Funds	
	Management during the implementation			
	Supervision and monitoring, including external monitoring			

LIST OF ITEMS ELIGIBLE FOR WORLD BANK FINANCING

Cost Category	Description of Cost Item	Cost Variable	Availability of World Bank Fund	Remark
Administration	Staff allowances and salaries	Depending on institutional set-up	100% under TA or from Trust Funds	Related to RAP implementation only
	Office and equipment	As per requirement	Ditto	
	Vehicles	Number and at market rates	Ditto	
	Operation and maintenance	Lumpsum amount per month or in terms of percentage of total cost	Ditto	