



# Promoting Climate-Resilient and Environmentally Sustainable Economic Growth in the GMS

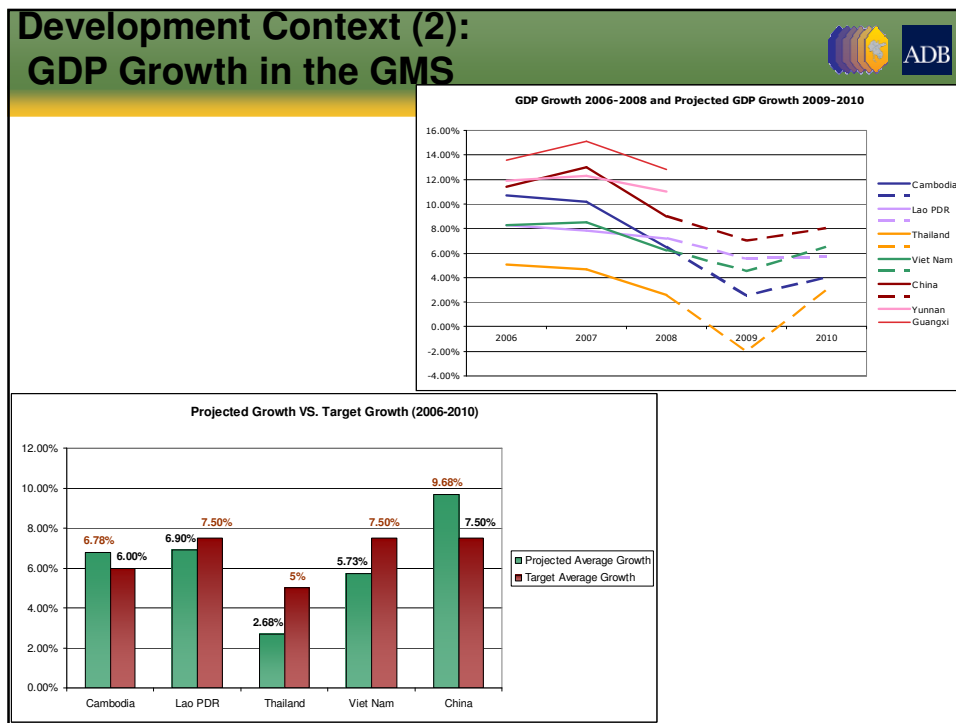
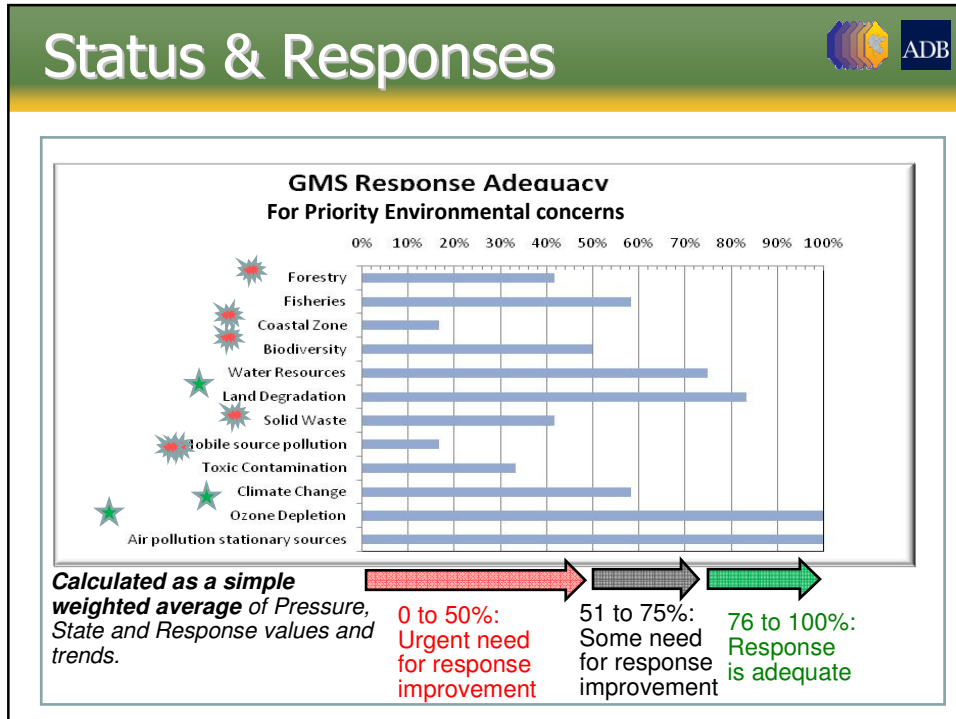
Javed Hussain Mir  
Principal Natural Resources Management Specialist  
Southeast Asia Department

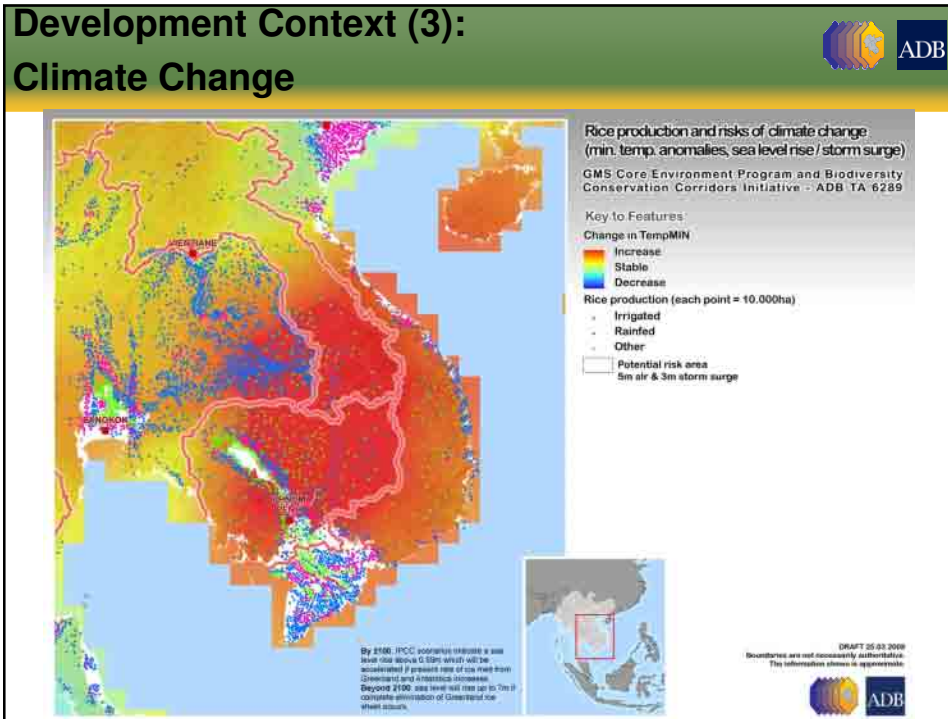


## Outline

- Environmental and development context
- Economic, Environmental Resilience and CEP-BCI
- Barriers to overcome







- ### Economic, Environmental Resilience and the Core Environment Program: (1)
- Improving environmental performance and sectoral efficiencies through Strategic Environmental Assessments(SEA) application
  - Integrating spatial planning in economic corridors
  - Embedding biodiversity conservation corridors in national frameworks and economic corridors(BCI)
  - Monitoring and tracking performance through Environmental Performance Assessments (EPA)
  - Pushing the knowledge frontier
  - Developing strategic partnerships
- 6

**GREATER MEKONG SUBREGION (GMS)**  
ECONOMIC CORRIDORS, CONSERVATION LANDSCAPES, AND EOC FOCAL AREAS

**The spatial clustering of Core Environment Program (CEP) activities 2009 – 2011 aims at:**

- Consolidating cross-sectoral linkages
- Enhancing transboundary synergies and cooperation
- Integrating climate change resilience and environmental sustainability

ADB

**Barriers to overcome:**

- **Fragmented policy and practice environment**
- **Knowledge deficits**
- **Human resource deficits**
- **Insufficient funding and/or inappropriate allocation**
- **Uncertain planning environment**

8



**Thank you**