

The views expressed in this paper/presentation are the views of the author and do not necessarily reflect the views or policies of the Asian Development Bank (ADB), or its Board of Governors, or the governments they represent. ADB does not guarantee the accuracy of the data included in this paper and accepts no responsibility for any consequence of their use. Terminology used may not necessarily be consistent with ADB official terms.



Regional Workshop to Launch the Center for River Basin Organizations and Management

ALICIA E. BONGCO

Laguna Lake Development Authority, Philippines

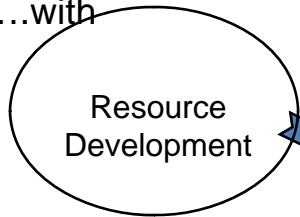
Solo, Indonesia

27 April - 1 May 2009

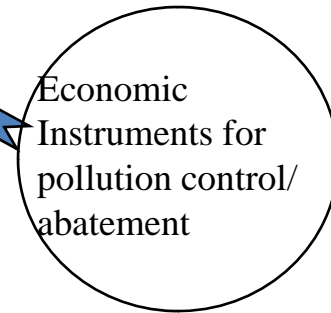
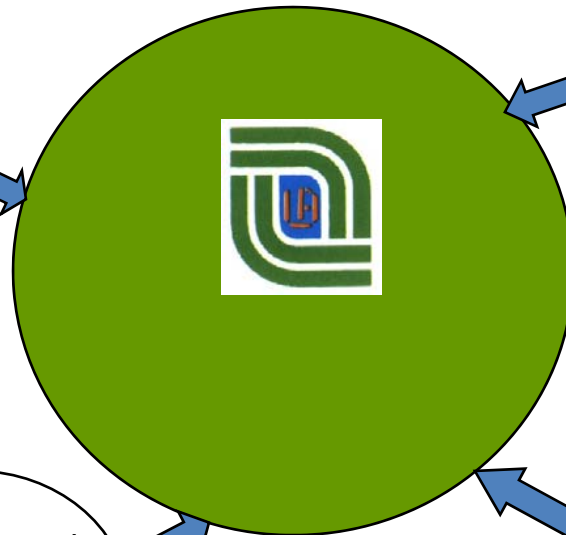
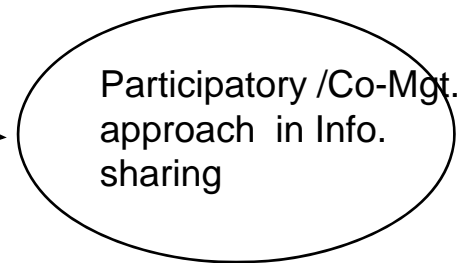
Evolution of LLDA

RA 4850 (1966)

mandates LLDA to promote and accelerate the development and balanced growth....with due regard for environmental management....)



LIDO / IMO A (2003) provides longer-term policy & institutional framework for management of LDB Region & implementing arrangement for LISCOP



PD 813 (1975)

Expands the mandate of LLDA to address environmental protection including the power to issue permit for the use of surface waters

EO 927 (1983)

Classified LLDA as Class A Corporation
Authorized to modify its organization
Granted water rights over Laguna de Bay and other water bodies within the region
Granted power to control and abate pollution within the region
Authorized to collect fees for the use of lake water

BR 33 (1996)

Approval of EUFS & adoption of IRR implementation started 1997



LLDA Key Functions

POLICY AND PLANNING**

Develop Lake with due regard to environment and prevention of ecological imbalance
Conduct comprehensive survey/studies/plans to conserve and utilize resources
Exercise water rights within Laguna Lake
Prepare a water quality management program
Coordinate policies with other government agencies and stockholders

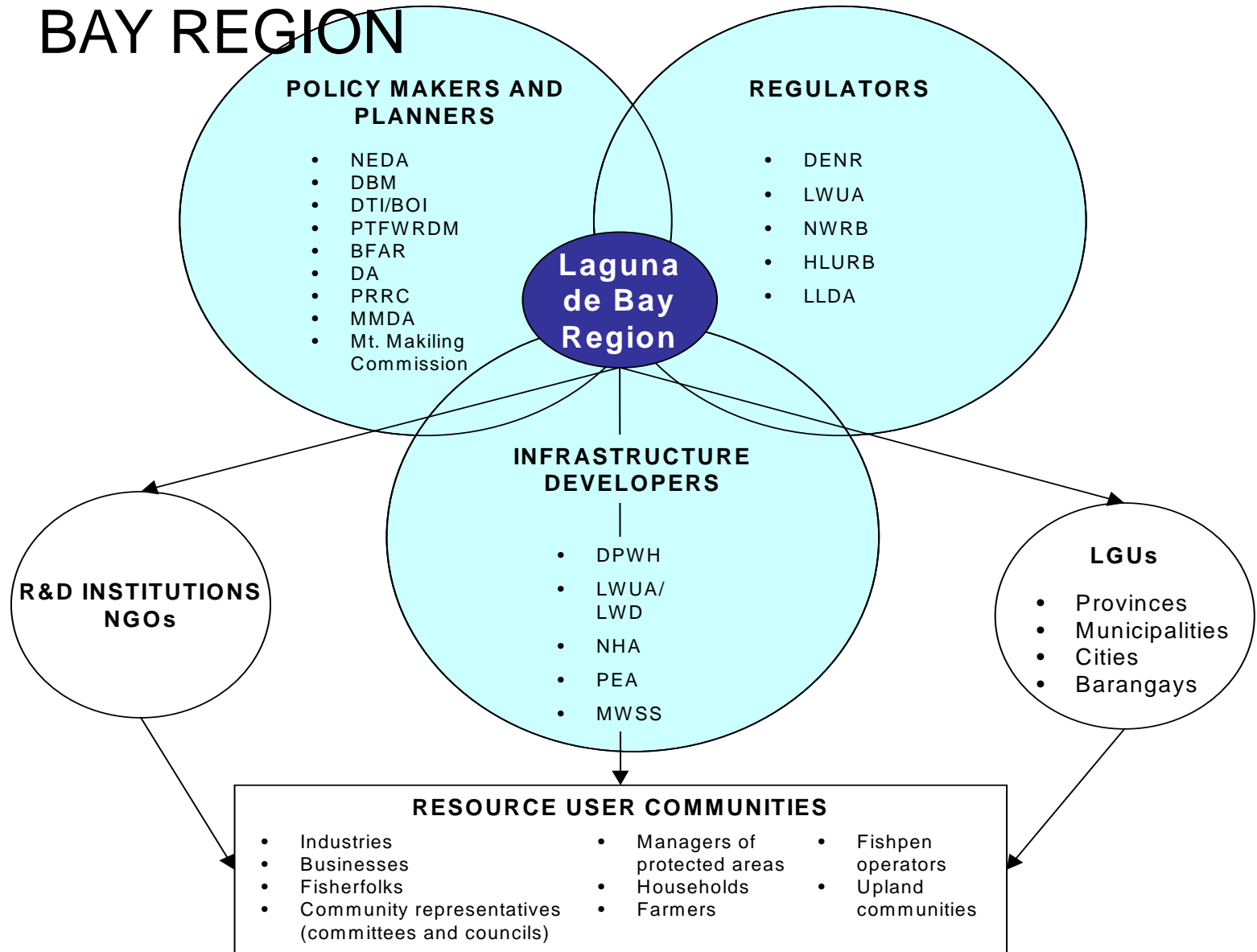
REGULATORY***

Establish and enforce water quality standards for industrial, agricultural and municipal use
Issue and revoke permits for use of surface waters within the lake region
Approve development plans proposed by LGUs, private persons or enterprises
Collect fees for use of Laguna Lake resources for all beneficial purposes
Compel compliance

INFRASTRUCTURE AND RESOURCES DEVELOPMENT*

Prepares and implement infrastructure projects such as river works, flood control and sewerage
Reclaim portions of the Lake
Undertake re-adjustments, relocations or resettlement of populations
Finance Infrastructure projects
Collect reasonable fees and toll charges
Develop water supply from groundwater or Lake water sources
Engage in fish production and other aquaculture projects

STAKEHOLDERS IN THE LAGUNA DE BAY REGION

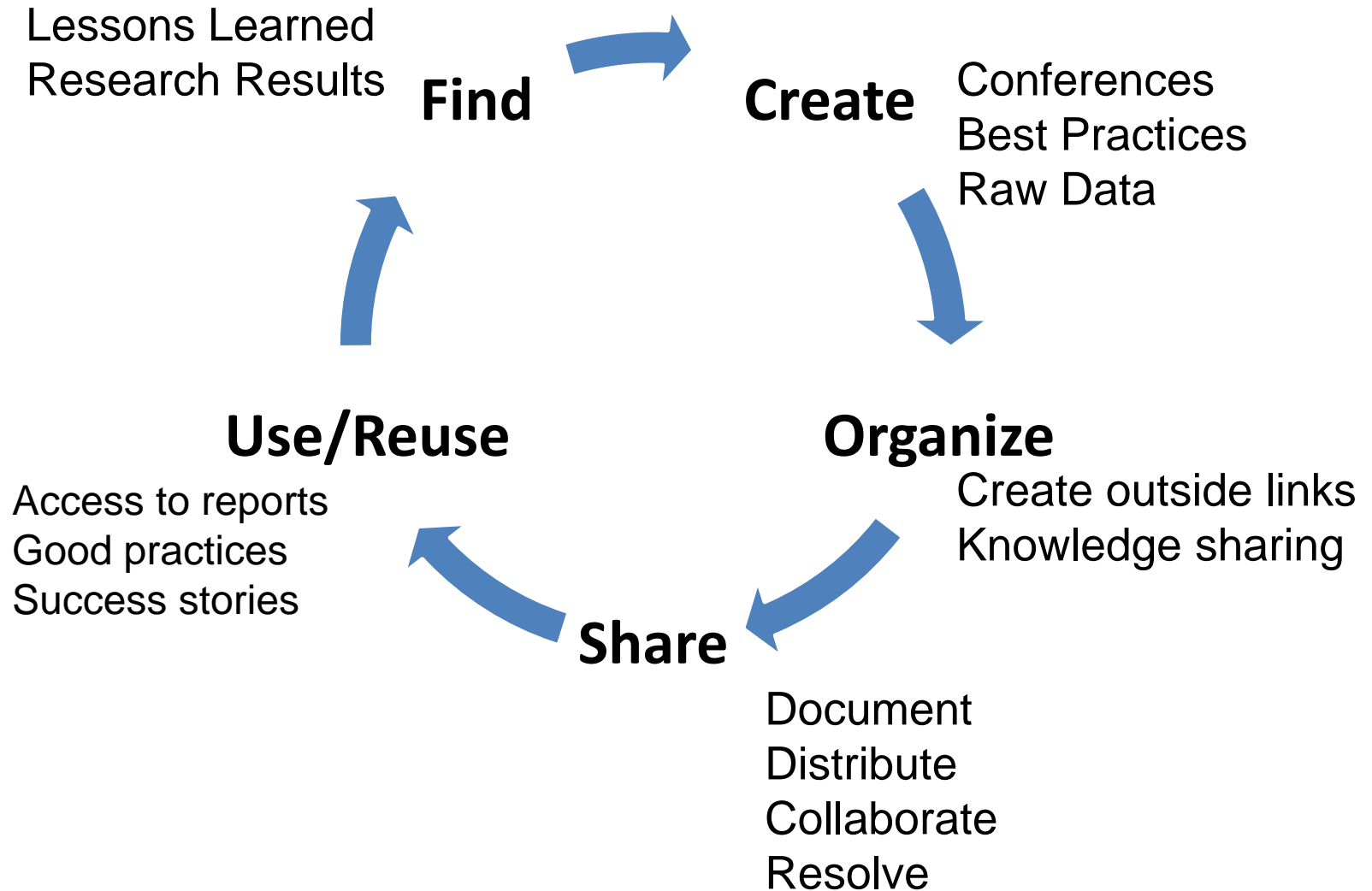


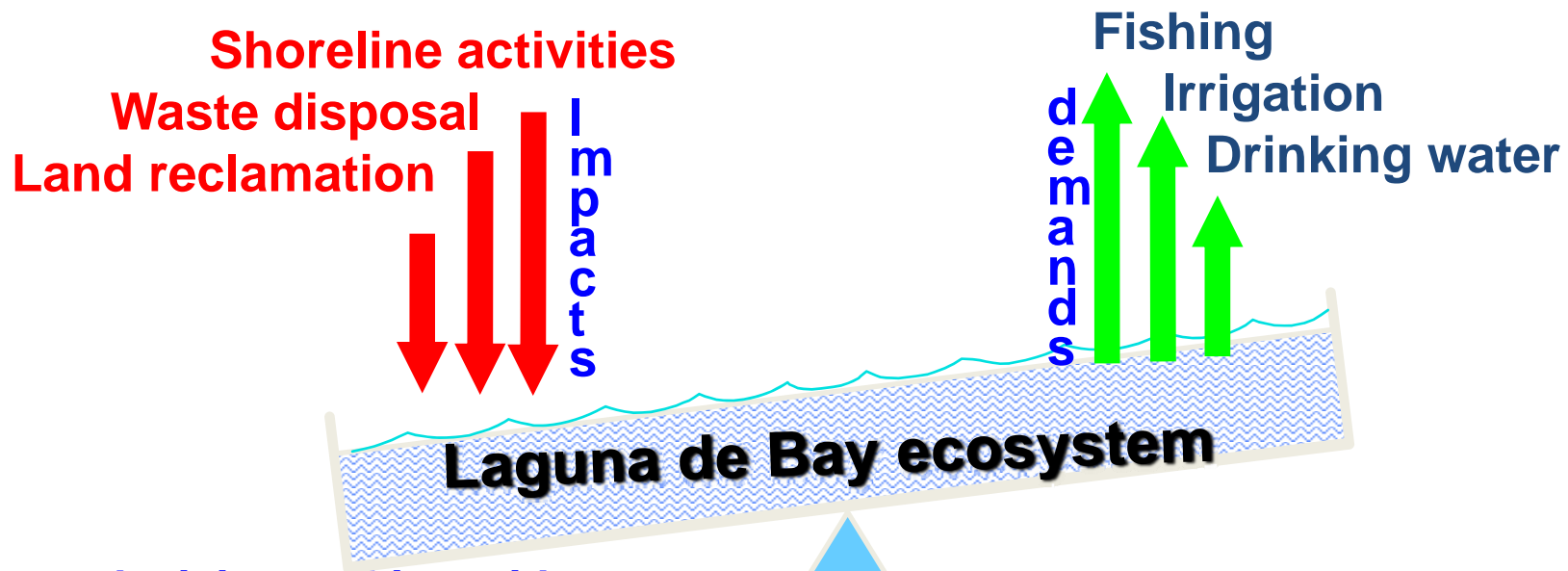
On-Going/Planned IWRM Initiatives

in the Laguna de Bay Region

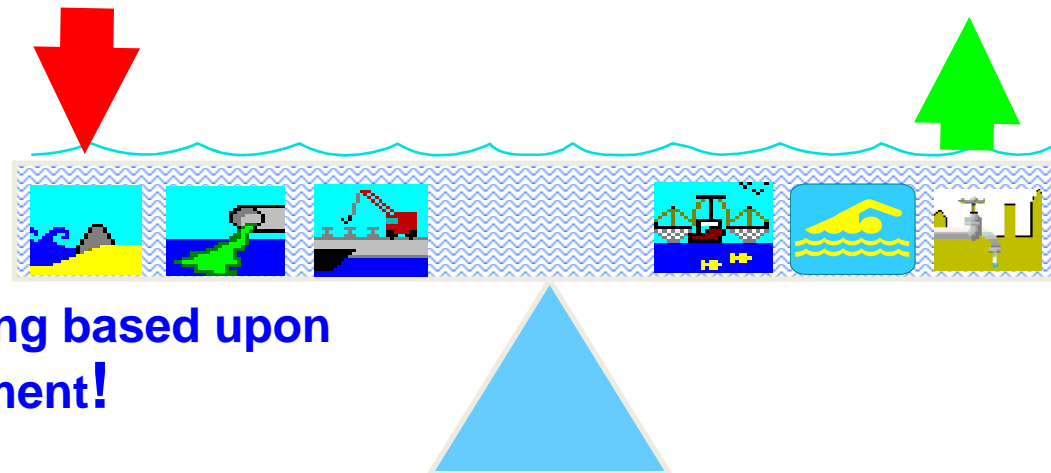
- Paradigm shifts in IWRM
 - Expansion of Environmental User Fee System
 - Raw water pricing using resource charge
 - Industry specific effluent standards which may lead to effluent trading
 - Alternative Dispute Resolution in resolving water use conflicts, pollution & other cases
- Co-managed investments and capacity devt. in watershed/environmental interventions in partnership with LGUs, River Councils, & other partners
- Expanding IT applications in decision support systems/technical tools (on-line clearance/permit system, GIS & remote sensing, simulation exercises on policy/program initiatives, etc.)
- Public disclosure of environmental performance of regulated entities and LGUs

Knowledge Cycle





Out of balance: decision making without appropriate knowledge on system functioning



In balance: decision making based upon a comprehensive assessment!