

GMS HRD Strategic Framework (2009-2012)

***9th Meeting of the WGHRD
Guilin, PRC 20-21 May 2009***



Outline of Presentation

- I. Background
- II. Strategic Priorities for GMS HRD Cooperation
- III. HRD Strategic Framework
 - * Goal
 - * Objectives
 - * Strategic Thrusts
- IV. WGHRD Structure and Implementation Arrangements



Background

- Recommendations from GMS SF Mid-term Review (2007)
- Directives from 3rd GMS Summit (2008)



Strategic Priorities for HRD Cooperation

HRD issues that are

- regional in nature,
- with scope for regional cooperation,
and
- require regional solutions.



GMS HRD Strategic Framework

Goal: Foster sustainable regional human resource development > contributing to increased subregional competitiveness, connectivity and community > promote and sustain economic growth and social development and enhance poverty reduction

Objectives:

- Support HRD initiatives that facilitate subregional cooperation/integration
- Address cross-border HRD issues directly linked to GMS integration



Strategic Thrusts

- (i) Promoting regional cooperation in education and skills development
- (ii) Facilitating safe labor migration within the subregion
- (iii) Supporting communicable disease control in the subregion
- (iv) Enhancing regional cooperation for social development, and
- (v) Strengthening regional institutional links and mechanisms for regional cooperation.



Promoting regional cooperation in education and skills development

- Training and curriculum development at the subregion level
- Subregional standards in technical and vocational education and training
- Phnom Penh Plan for Development Management



Facilitating safe labor migration within the subregion

- Enhance GMS labor market information
- Improve labor migration management
- Progress dialogue on access to social services & social security services



Supporting CDC in the subregion

- Control cross-border spread of existing and emerging communicable diseases
- Prevention and care of communicable diseases in vulnerable populations
- Strengthen subregional capacity to cooperate in communicable disease control

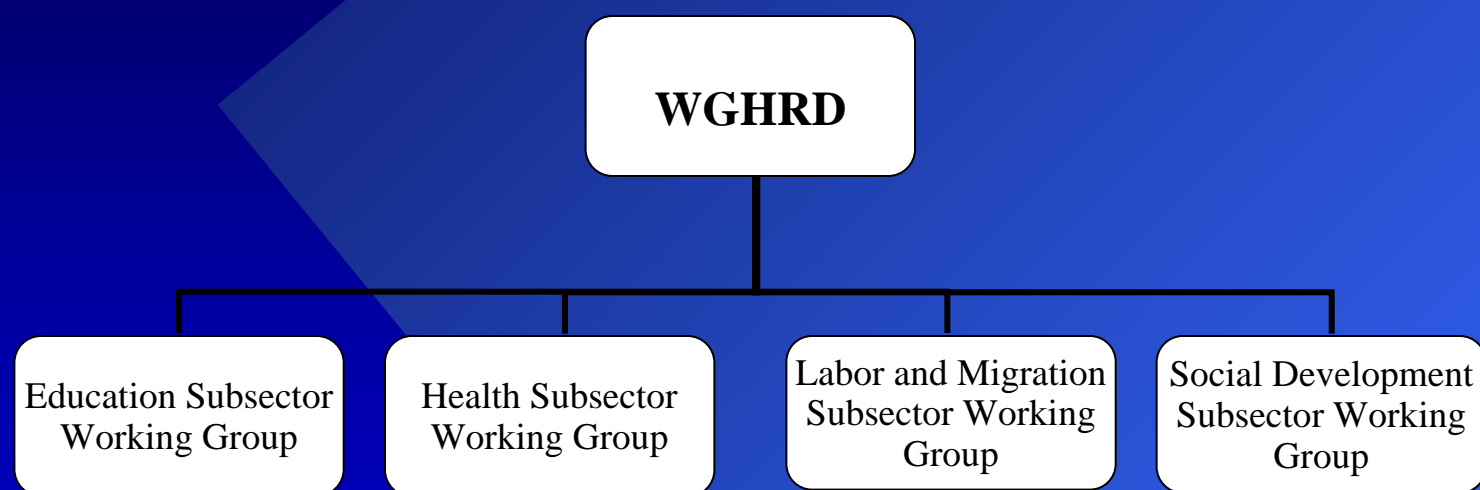


Enhancing regional cooperation for social development

- GMS Youth Forum
- Research on social impacts of increased connectivity & integration
- Anti-human trafficking
- HIV/AIDS & Infrastructure
- Strengthening capacity of women & vulnerable groups



Working Group and its Four Subregional Subsector Working Groups



WGHRD = working group on human resource development.

Source: Asian Development Bank.



Strategic partners

- Need for close coordination with other organizations working on GMS HRD issues
- Important contributions of strategic partners
- Co-financing of GMS HRD initiatives



Financing

- Need for additional financing
- Continued ADB financing, but with increased co-financing from strategic partners and increased financing from GMS countries
- Increased visibility of the WGHRD with governments and strategic partners



Monitoring

- SFAP results framework for the period 2009-2012
- Anticipated impact/outcomes
- Achievement of outputs



Thank you for your kind attention!

