

GMS SEF

China's Presentation on Recent Development in Energy Sector

GAO Shixian
Energy Research Institute,
National Development & Reform Commission, P.R. China

gaoshixian@amr.gov.cn
Tel: +86-10-6390-8471;
Fax: +86-10-6390-8472

March 18-19, 2009
Bangkok, Thailand

1

Outline

- 1. Energy Current Situation**
- 2. Energy policies in the near future**

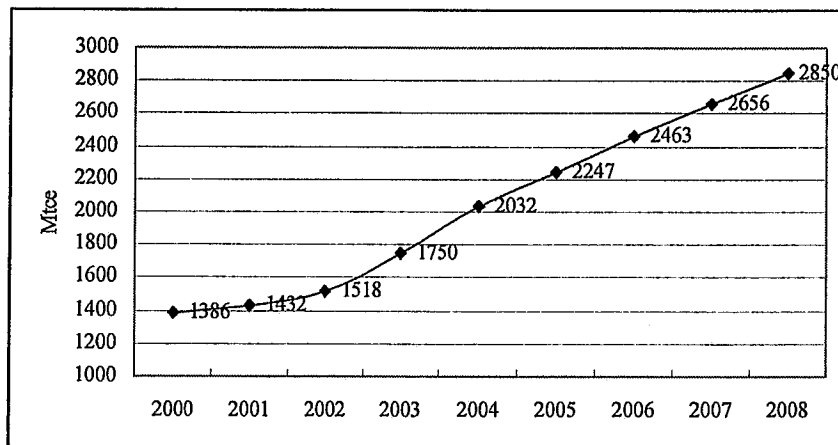
2

1.1 Energy output and consumption in China in 2008

The energy intensity in term of GDP decreased 4.59%.

3

1.1 China's energy consumption

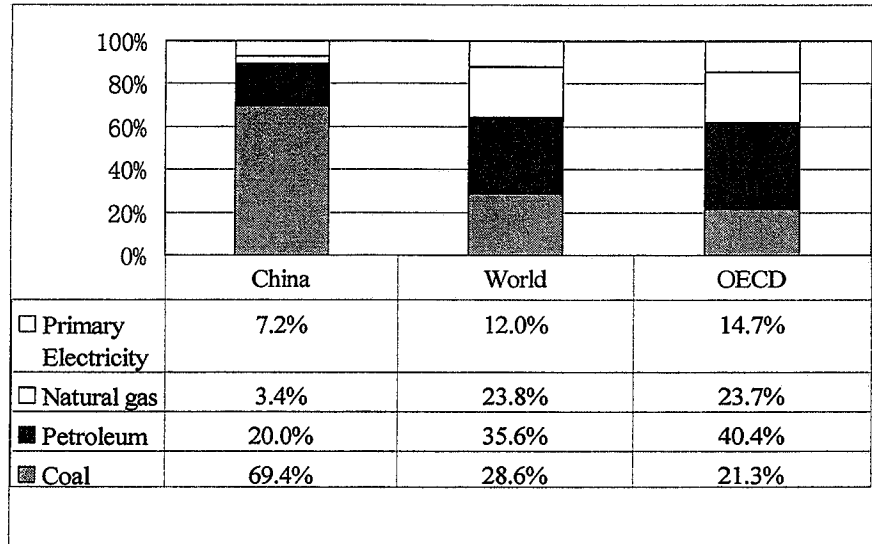


The growth rate of energy consumption during 2000-2008 was 9.43%;

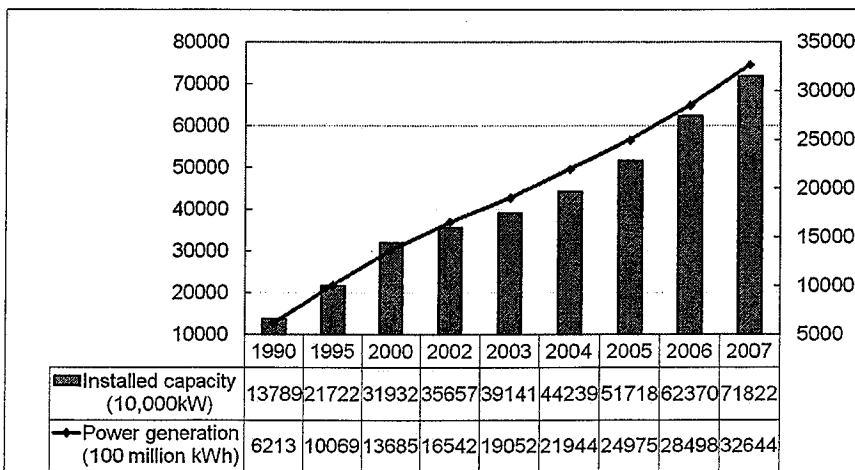
It was 8.25% during 2005-2008

4

1.1 Composition of Energy Consumption in China in 2007



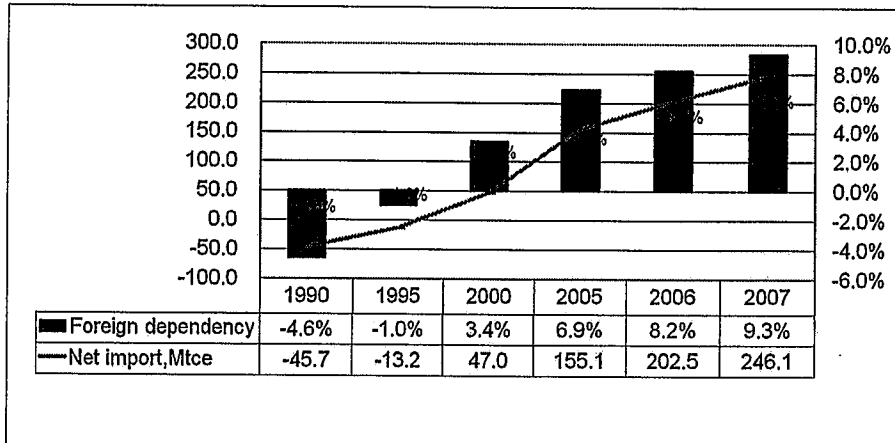
1.2 Power Generation



79.3 GW and 3467 TWh in 2008;

1.3 2007 Energy Balance

In 2007, total domestic production of primary energy was 2.66 billion tce, with a overseas dependency at 9.3%.



7

1.4 Energy Administration

In 2008, A new organization titled National Energy Administration (NEA) was set up. NEA is in charge of overall energy management.

8

2. Energy policies in the near future

Enhance development of energy infrastructure and key program , such as coal bases, nuclear power , electricity from west to east, natural gas from west to east, oil stockpile, energy equipment innovation;

Optimize energy structure: heighten the proportion of natural gas, hydropower, nuclear power, wind power in total primary energy;

Strengthen energy international cooperation .

9

2. 1 Coal Sector

Speed up developing 13 coal bases projected, heighten the proportion of coal base in total output;

Restructure coal mines;

Improve coal mine safety;

Speed up developing railway for coal transportation

10

2. 2 Oil and natural gas Sector

Strengthen oil and natural gas international dialogue and cooperation;
Use more international resources;
Develop actively oil and natural gas transport ways;
Strengthen oil stockpile .

11

2. 3 Renewable Energy Sector

Develop actively hydro power;
Promote wind power development at large scale; (capacity reached about 10 GW by end of 2008, will develop 4 wind-power bases with 10 GW respectively)
Push developing solar energy;
Push development and utilization of bio-mass and bio-fuel.

12

2. 4 Energy efficiency and technology

Strengthen to improve energy efficiency;

Push key energy technological innovations;

Heighten energy equipment level.

13

– Clean coal use

- Traditional CCTs;
- Advanced CCTs, such as IGCC, DME, Coal liquefaction

– Renewable energy development

- 10% by 2010, 16% by 2020 (current 8%)
- 30 GW wind power and 30 GW biomass for power
- 10 million tons of bio-fuels

– Development nuclear power

- 60 -70 GW by 2020,
- 5% in total capacity by 2020

14



Thank you for your attention!