

Ethnic Minorities Development Plan

Jinlong Reservoir Water Supply Subproject Ethnic Minorities Development Plan
Document Stage: Draft
Project Number: P38594
September 2006

PRC: Guiyang Integrated Water Resources Management Sector Project

Prepared by Black & Veatch (Asia) Ltd., in conjunction with the Guiyang Municipal Government for the Asian Development Bank (ADB).

The ethnic minorities development plan is a document of the borrower. The views expressed herein do not necessarily represent those of ADB's Board of Directors, Management, or staff, and may be preliminary in nature.

**GUIYANG INTEGRATED WATER RESOURCES
MANAGEMENT PROJECT
IN THE
PEOPLES REPUBLIC OF CHINA**

**Ethnic Minorities
Development Plan
Jinlong Reservoir
Water Supply Subproject**

DRAFT

September, 2006

GUIYANG MUNICIPAL GOVERNMENT

THIS REPORT WAS PREPARED BY THE BORROWER
AND IS NOT AN ADB DOCUMENT

ENDORSEMENT OF THE ETHNIC MINORITIES DEVELOPMENT PLAN

The Guiyang Municipal Government has requested, via the Central Government of the Peoples Republic of China, a loan from the Asian Development Bank (ADB) to finance part of the Guiyang Integrated Water Resources Management Project. The Project will therefore be implemented in accordance with the social safeguards policies of the ADB. This Ethnic Minorities Development Plan (EMDP) represents a key requirement of the ADB. The EMDP presents the situation and actions to be taken to comply with social safeguards concerning ethnic minorities for the subproject. It includes procedures for implementation and monitoring to ensure that the EMDP prepared for this subproject of the sector loan will be effectively executed.

The Guiyang Municipal Government hereby endorses the attached EMDP and guarantees that funds will be made available as stipulated in the budget. The Guiyang Municipal Government authorizes Project Management Office for the Guiyang Integrated Water Resources Management Office as the responsible agency to implement the project and related EMDF activities.

Approved on 26 September 2006

_____, Guiyang Municipal Government
(original signed)

SUMMARY ETHNIC MINORITIES DEVELOPMENT PLAN

A. Introduction

This plan is prepared to better safeguard the all the affected people, within the subproject area (SPA). For this subproject, 4.24% of the affected populations are minorities. Current government policies and programs further help to protect and enhance project benefits to ethnic minority groups.

Guiyang Water Resource Bureau, with the assistance of PPTA consultants and the design institutions, had constantly consulted the affected people and their communities, the Guiyang Municipal and the project county governments and their line agencies. The consulted line agencies included ethnic minority affairs bureau, poverty reduction office, land administration bureau, reform and development bureau (i.e., planning bureau), water resource bureau, the women's federation, etc. This document, therefore, represents the joint decisions of both GM and project area authorities.

B. Ethnic Minorities in the Project Area

Total minority population in the subproject area is estimated to be 533 or 4.24% of the total population by 2004, which is much lower than the average municipal proportion of 15.4%. The largest ethnic minority is Miao, 86.12% of the total ethnic minority population in the project area, others are Yi and Bouyei.

C. Socioeconomic Characteristics of the Ethnic Minorities

Ethnic Minorities live in harmony in the area and inter-marriages are common amongst Miao, Yi, Bouyei and Han. Miao, Yi and Bouyei people have distinct ethnic identities and language. They celebrate special festivals of their own during the year. Some people, especially women, wear distinctive ethnic clothing, at least on some occasions. In the subproject area, most agricultural and other livelihood activities are very similar for ethnic minorities and ethnic Han people.

Income and Poverty. The net income per capita in the rural area is CNY 3,308.

Gender Aspects. Gender group discussion indicates a good equity or at least an ever-improving equity status between rural women and men. Farming activities are shared by men and women, while women have primary responsibility for domestic activities and men for arduous farming activities. The family income is usually jointly managed by husband and wife, while women play more roles in the decision-making of family income and expenditure. The rate of divorce is low because people find their husbands or wives by their own will, which also indicates that women have a good social position in their families.

Migration. The locals are accustomed to go outside of the village as migrant workers for additional family income during the non-farming seasons, and stay in the village for farming activities during farming season. There is no difference between the Han people and ethnic minority people for finding a job as migrant worker. Most of them are engaged in the assignment with no or little requirements for skills and technology.

D. Impacts of Resettlement

No houses will be demolished.

The permanent land loss from the subproject will be 373.93 mu of collective-owned bush land and barren land with no people affected. And temporary occupied land will be 275.3 mu, including 50.8 mu paddy field and 43.8 mu dry land, which will affect 61 persons among 14 households, including 3 ethnic minority people in one household.

E. Overall Impact and Minority Beneficiaries

The project have minor negative impacts and more positive impacts of improving agricultural irrigation conditions, providing drinking water for human and animals in the irrigation area, and water supply to the county town.

The project will directly benefit 7,564 local residents, of which, 353 are ethnic minority people.

- (1) **Agricultural Benefits:** It is estimated that, after completion of the subproject, the water will be provided for farmland of 6842 mu in 2010, 6636 mu in 2015 and 6468 mu in 2020. The annual economic benefit of the ethnic minority people will be CNY200-300 per capita from the subproject;
- (2) **Clean Drinking Water:** It is estimated that, after completion of the subproject, the drinking water will be provided for 5,775 people and 3,991 animals in 2010, for 5,630 people and 4,170 animals in 2015, and for 5,490 people and 4,338 animals in 2020. Presently the water provision of the residents in the villages is from the shallow underground water or surface water with no sanitary security. The project will provide safe and clean water for the local, so as to improve their health and livelihood.
- (3) **Temporary employment:** It is estimated that, during the construction, 280 workers, of which, 196 unskilled workers, will be employed for the subproject. The rate of unskilled worker will be about CNY20/day, i.e., CNY 600/month. Consulted with the PMO, under the same conditions, priorities will be given to the ethnic minority people for the opportunities of temporary employment, which will result in yearly income of CNY 7,200 for the ethnic minority people participating in the subproject construction.

F. Expectations and Concerns

The overall conclusion from public consultation is that the needs and aspirations of ethnic minorities in the project area are the same as their Han neighbors. They want (1) improved water supplies for domestic use and agriculture; (2) to be fully included in project activities and are similarly interested in participating in the water user association; and (3) fair compensation for any major land acquisition.

G. Action Plan

The Project will apply a mainstreaming strategy to ensure full participation of ethnic minority people and will ensure that any persons affected by land acquisition and resettlement are better off after the project. Table 10 presents the main ways in which the project will have impacts on ethnic minority people, targets, number of ethnic minority people affected, budget information, and timing.

Table 10: EMDP Action Plan

Measures	Targets/Indicators	Ethnic Minority People Beneficiaries/Affected Persons	Budget	Timing
Protection of ethnic minority communities from construction disturbances	<ul style="list-style-type: none"> Prohibiting nighttime construction Reconstruction of damaged irrigation/drainage systems 	533 ethnic minority people in 6 villages	Included in Project costs, covered by EIA	2007.1~2008.12
Communicable disease control	Clinic services for construction camps and communities Health education in project area villages	In all construction camps and nearby villages	Included in Project budget, included in contract document	2007.1~2008.12
Promoting women's participation and decision-making	A series of meetings	EM women in the project area	In government budget	2007.1~2008.12 and operating period afterward
Compensation of Land acquisition	<ul style="list-style-type: none"> Timely payment of compensation for temporary occupied land Restore the temporary occupied land soonest after work completion 	Affected households of ethnic minority	In Resettlement Plan	2007.1~2008.12
Assistance for vulnerable groups as disabled and poor	Establishing special funds of CNY5,000 for vulnerable groups	Potential affected vulnerable groups as disabled and poor, especially those of EM	In Resettlement Plan	2007.1~2008.12
Construction employment of unskilled worker from ethnic minority group	Local labor, including EM, with 20% inclusion of women	APs, especially those of women or EM	Included in Project budget and civil works contracts	2007.1~2008.12
Participating in the project's operation and management	Establishment of WUA, including full inclusion of EM members and representation in WUA leadership	Representatives from EM	In project operating budget	Project operation period

H. Implementation Arrangement, M&E

The PMO, and Xiuwen Water Resource Bureau, the Implementing Agency, and the contractors, will play a leading role in implementing most of the construction-related measures. County governments will take the leading role in implementing the supportive measures such as agricultural extension, rural infrastructure improvement, etc.

The PMO will monitor the targets identified in the EMDP and update information as implementation proceeds. Relevant experts from the Guizhou Nationalities Institute or other qualified experts may take part in the annual review of ethnic minorities development in the project and may be asked to advise if specific needs are identified.

CONTENTS

ENDORSEMENT OF THE ETHNIC MINORITIES DEVELOPMENT PLAN
SUMMARY ETHNIC MINORITIES DEVELOPMENT PLAN
ETHNIC MINOTITIES DEVELOPMENT PLAN

- 1. Introduction..... 1
 - 1.1 Project description 1
 - 1.2 Subproject description 2
 - 1.3 Objectives of the EMDP..... 3
 - 1.4 Policy Framework 3
- 2. Ethnic Minorities in the Subproject Area 3
 - 2.1 Population 3
 - 2.2 Socioeconomic Characteristics..... 4
 - 2.3 Government Activities for Ethnic Minority Development in the Subproject Area 8
 - 2.4 Local Social Organization and Stakeholder analysis..... 9
- 3. Subproject Impacts on Ethnic Minorities 9
 - 3.1 Positive impacts..... 10
 - 3.2 Negative impacts 11
- 4. Participation Process and Results..... 12
 - 4.1 Consultation during subproject preparation 12
 - 4.2 Aspirations, needs, and preferred options 13
- 5. Action Plan 13
 - 5.1 Measures to avoid, mitigate, or compensate for the adverse project effects;..... 14
 - 5.2 Measures to ensure project benefits will accrue to indigenous peoples..... 15
 - 5.3 Measures to strengthen social, legal, and technical capabilities of government institutions to address indigenous peoples issues..... 15
 - 5.4 Involvement of local organizations and non-governmental organizations with expertise in indigenous peoples issues 16
 - 5.5 Implementation Schedule 16
- 6. Budget Allocation 16
- 7. Monitoring and Evaluation..... 16

ANNEX 1: RECORDS OF PUBLIC PARTICIPATION AND CONSULTATION

ETHNIC MINORITIES DEVELOPMENT PLAN

1. INTRODUCTION

1.1 Project description

1 The Guiyang Integrated Water Resources Management Project will support a variety of activities to improve provision of water in rural and urban areas of the municipality. The project will support construction of new reservoirs and water supply infrastructure, irrigation system rehabilitation, and soil and water conservation, together with development of management institutions for assuring improved delivery of water services and integrated management of water for social, economic, and environmental objectives.

2 The project is expected to have substantial positive impacts on ethnic minority people in providing improved supplies of water for domestic use and irrigation. Subprojects developed under the project should reduce poverty by providing reliable access to clean water for drinking, bathing and other domestic use, and water for irrigating crops for household consumption and for sale, including expansion in profitable cultivation of high-value crops such as vegetables, flowers, herbs, fruits. A significant number of ethnic minority people will be affected by land acquisition and resettlement, with measures undertaken to ensure that adverse impacts are mitigated and they are beneficiaries of the project.

3 The Project will invest CNY 2.4 billion (\$ 300 million) for the construction of medium and small reservoirs, dams, agriculture irrigation systems, urban and rural water supply schemes, rainwater collection structures, and soil and water conservation. The Project is planned to be implemented over 6 years. The proposed Project aims to:

- (i) improve reliable and safe water supply, support economic and social development in response to the demands on water resources, and to promote the comprehensive management and optimized allocation of water resources;
- (ii) raise grain output, speed up rural economic development, promote the construction of new socialist countryside, and to structure harmonious society; and
- (iii) protect water resources, improve ecological environment, and to ensure the sustainable utilization of water resources.

4 The Project includes the following components:

- (i) establishment of one medium-sized and two small reservoirs for urban water supply, including construction of dams, water conveyance tunnels, transmission pipelines, water treatment plants, and extension of the municipal water distribution networks;
- (ii) construction of 43 small reservoirs for rural water supply and irrigation, water conveyance systems, small township treatment facilities, and irrigation systems;
- (iii) rehabilitation and upgrading of irrigation schemes in 9 areas including installation or repair of intake structures, canals and aqueducts;
- (iv) provision of 127,890 small water storage structures (ponds, tanks, and cisterns) in rural areas to store spring water for humans and livestock and rainfall run-off for irrigation; and
- (v) protection from water and soil losses in the upper catchments of the water sources (800 km²) with farm land restructuring, conversion of sloping farmland

to terraces, tree or grass planting areas, and fruit tree planting.

5 During the PPTA stage, six core subprojects have been selected:

- (1) Yudongxia Reservoir Urban Water Supply Subproject,
- (2) Jinlong Reservoir County Water Supply Subproject,
- (3) Liaojiuzhai Reservoir Water Supply and Irrigation Subproject,
- (4) Wudang District Midsize Irrigation System Rehabilitation Subproject,
- (5) Xifeng County Small-scale Water Storage Subproject, and
- (6) Huaxi Reservoir Soil and Water Conservation Subproject.

6 On the basis of the review of six selected core subprojects by PPTA consultant and Guiyang Project Management Office (GPMO), four core subprojects are to have ethnic minorities development plans. Ethnic minorities development plans for Yudongxia and Jinlong Reservoirs, Wudang Irrigation Rehabilitation and Huaxi Water and Soil Conservation are needed as part of the project preparation.

1.2 Subproject description

7 The Jinlong Reservoir Water Supply Subproject comprises two components; (1) reservoir construction and (2) water delivery pipelines.

8 The Jinlong reservoir is situated at Longchang Town, Xiuwen County and 5 km from the County Town. The Xiuwen County is located in the central part of Guizhou province, north of Guiyang City. According to the data of 2004, the total area of the cultivated land is 261,100 mu, of which the effective farming land covers an area of 69,100 mu with an output of grain of 91,200 ton. Under the administration of Wudang District are 4 towns and 6 townships, 229 residents' committee/village committees, with a total population of 283,800, of which the agricultural population is 265,800, non-agricultural population being 18,000 and ethnic group population being 23,600, about 7.7% of the population.

9 In 2004, the GDP in Xiuwen County is worth CNY 1,682 million, of which the output of primary industry is CNY 442 million, that of secondary industry is CNY 811 million, and that of tertiary industry is CNY 429 million. The per capita GDP is CNY 5,484, while the net income per capita in rural area is CNY 2,390.

10 The subproject has two components as followings:

- (1) Reservoir construction including dam, flooding channel, water tunnel and structure of water delivery, and
- (2) water delivery pipelines for water supply to urban residents living in the county town, which includes 2 primary pipelines with a length of 6.845 km, 8 secondary pipelines with a length of 13.11 km, and one 103 m-long siphon, one pumping station with capacity of 0.05 cu m/s, and tertiary pipeline of PE/PVC pipe with an area of 4,120 mu.

11 The total cost estimate of this Subproject is CNY 69 million. It is scheduled to commence in January 2007 and completed by May 2008.

12 The works under this sub-project are mainly used for farmland irrigation, drinking water for human and animals in the irrigation area, and water supply to the county town.

13 The project affected people/beneficiaries will basically comprise of two main groups, namely: (1) 12,556 people living in the irrigation area of six villages of Xinzhai, Xinshui, Xinchun, Jianxin, Chengnan and Xiaoshan who will be, among others: (a) benefiting from the

irrigation and water supply; and (b) suffering from permanent and temporary land acquisition/house relocation; and (2) 37,000 urban residents living in the County town who will not be subject to any negative impacts, but they will be benefiting from better water supply for domestic and industrial use.

1.3 Objectives of the EMDP

14 This Ethnic Minorities Development Plan has been prepared to ensure that ethnic minority people have opportunities to participate in and benefit equitably from the Guiyang Integrated Water Resources Management Project. It describes the measures to be undertaken in the subproject to improve livelihoods, reduce poverty, and to mitigate negative impacts, particularly those related to land acquisition and resettlement.

1.4 Policy Framework

15 This Ethnic Minorities Development Plan is based on the Ethnic Minorities Development Framework (EMDF) for the Guiyang Integrated Water Resources Management Project, and, as discussed in the EMDF, on the relevant laws and regulations of the Peoples Republic of China (PRC) and the Asian Development Bank Policy on Indigenous Peoples, including Policies and Procedures in the ADB Operations Manual. The 1949 PRC Constitution established the legal equality of all ethnic groups. Government policies and regulations include a variety of measures to address the needs of ethnic people, including autonomous governments at various levels, special consideration in education, and funding to assist ethnic people. ADB policy is that "poverty reduction and improvement in the quality of life realized from development must be extended equitably and reach each segment of society, including indigenous peoples."

2. ETHNIC MINORITIES IN THE SUBPROJECT AREA

2.1 Population

16 In 2004, the population of ethnic minorities in Xiuwen County totalled 23,600 persons, accounting for 7.67% of total population. The project area will involve in 6 villages of Xinzhai, Xinshui, Xinchun, Jianxin, Chengnan and Xiaoshan. The latter might have land loss due to flooding of the reservoir. The land to be flooded is the bush land and barren land owned by the collective with no contracts to individuals. So the land loss will have minor impacts on specific minority people in Xiaoshan village. The land loss caused by reservoir flooding in Xiaoshan village is bush land and barren land, which is under the treatment of embargo of cutting and farming activities around the Jinlong reservoir, so the loss will have little or no impact on the ethnic minority people in the village.

17 There are 5 (Xinzhai, Xinshui, Xinchun, Jianxin and Chengnan) of 6 villages in the irrigation area having potential impacts and 1 village (Xiaoshan) in the inundated area. There are 12,510 people in 6 villages, of which, 533 are ethnic minorities, 4.24% of the people in the villages. Only one village has more than 10% of ethnic minority population among the total in the villages. Of the ethnic minorities, the largest ethnic minority is Miao, 86.12% of the total ethnic minority population in the villages, then Yi and Bouyei. About 80% of villagers will be the beneficiary population. All the ethnic minority people are scattered within the Han's villages, there are no ethnic minority clusters in the six villages. Table 1 shows the number of ethnic minority people living in the project area. Figure 1 shows the distribution of Ethnic Minority People in the Subproject area.

Table 1: Ethnic Minority Population in the Project Area

Village	Total Population	Ethnic Minority Population	%	Largest ethnic group)	(2 nd Largest ethnic group)	Other ethnic groups
Xinzhai	2408	57	2.37	46 Miao	3 Bouyei 3 Yi 3 Tujia	2 Gelao
Xinshui	2064	16	0.78	16Miao		
Xinchun	2404	125	5.2	118Maio	4 Yi	3 Tujia
Jianxin	1952	14	0.72	5 Yi	4 Miao	3 Dong 1 Bouyei 1 Yi
Chengnan	2282	141	6.18	135 Miao	6 Bouyei	
Xiaoshan	1446	180	13.43	144 Miao	36 Bouyei	
Total	12556	533	4.24	459 Miao 5 Yi	9 Bouyei 39 Yi 3 Tujia 4 Miao	2 Gelao 3 Tujia 3 Dong 1 Bouyei 1 Yi

2.2 Socioeconomic Characteristics

18 Under the Town of Longchang in Xiuwen County where the project is located, there are 36 villages and 4 residential quarters. In 2004, the population in the Town totals 72,420 persons, of which, 50,289 are agricultural people. The output value of agriculture and forestry is CNY 124.95 million, of which, CNY 81.31 million being agriculture and 0.81 million forestry, CNY 40.36 million livestock breeding, CNY 2.21 million fishery and CNY 0.26 million agricultural services. The total value earned by the township enterprises is CNY 1,255.6 million. The net income per capita in the rural area is CNY 3,308.

2.2.1 Beneficiary and Poverty Status

19 The average per-capita farmland is 1.46 mu with the largest of 2.17 mu in Xinshui village and smallest of 0.33 mu in Chengnan village. According to official standards, there are 212 poor people in these villages, accounting for 1.91% of the total population and 2.4% of the total beneficiary population in the area. Because of the restricted natural conditions, poor productive mode and lack of development, the rural poverty population is behind in social development. They have not made many changes in their livelihood practices. Moreover, the shortage of labor makes it hard for poor people to escape poverty and attain prosperity. This subproject will become a motivating force to help the rural poor in attaining prosperity. Aiming at stably solving the problem of food and clothing of the poor masses, it is needed to perfect water infrastructure, strengthen agricultural training, adjust planting structure and improve the basic conditions of production and living in the poor areas. Thus, the construction of harmonious society will be pushed forward in an all-round way.

20 Among the villages, the project beneficiary will be 7,564 persons, all the ethnic minority family, poor family and the woman-headed family will be benefited as same as others. Tables 2 and 3 present the poverty data and beneficiary in the subproject area, first with general information for the villages in the subproject area and then specifically for the anticipated project beneficiaries.

Figure 1: Location Map of Jinlong Subproject Showing the Distribution of Ethnic Minority People

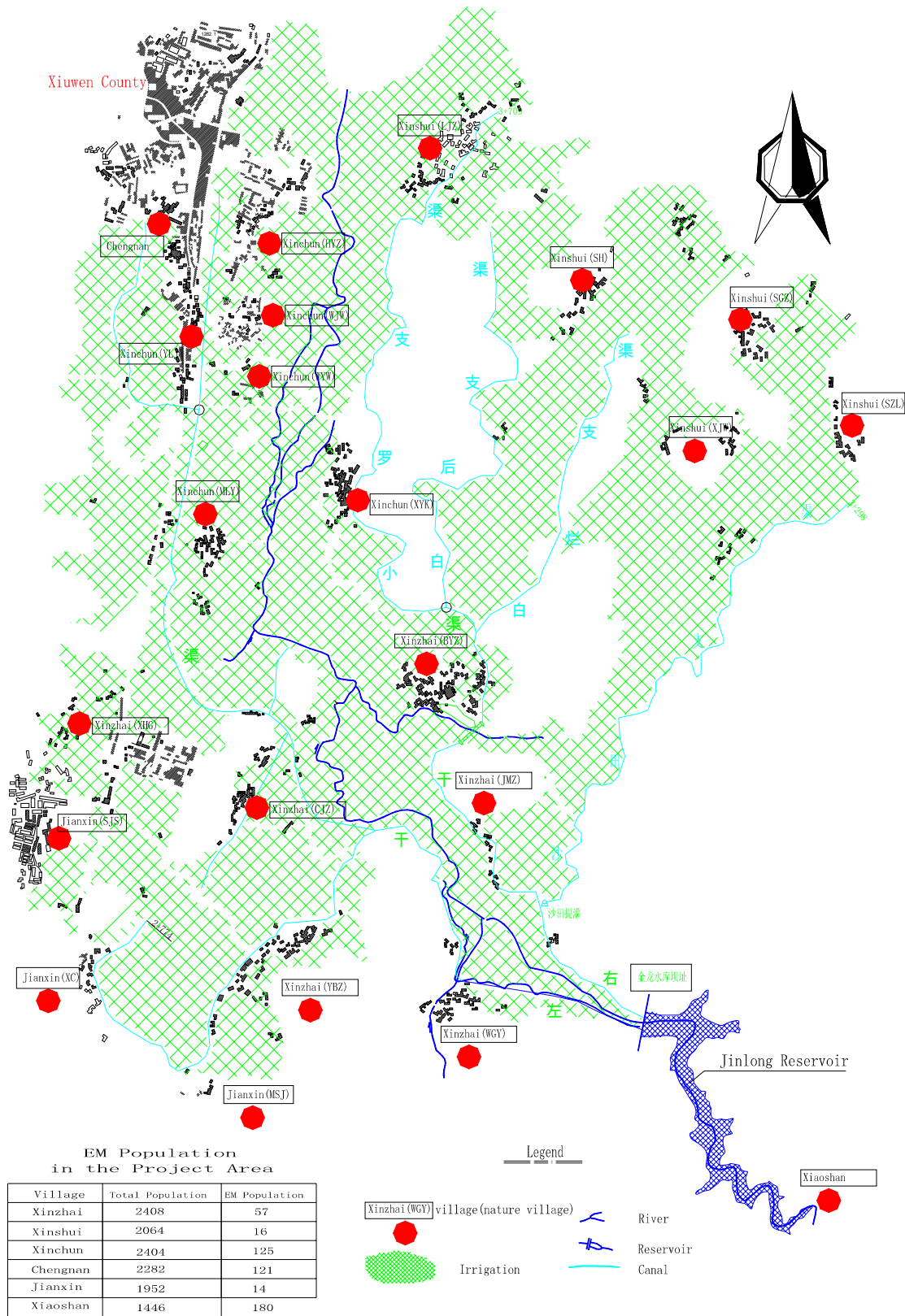


Table 2: Poverty Data for the Subproject Area

Village Name	Male	Female	Total	Persons below poverty line	Persons receiving minimum livelihood subsidy	Female household heads, registered (de jure)	Female household heads, de facto, (estimate)	Bene-ficiaries (est.)	Bene-ficiaries below poverty line (est.)
Xinzhai	1225	1183	2408	28	0	18	30	240	28
Xinshui	986	1078	2064	52	0	15	25	1083	52
Xinchun	1208	1196	2404	37	0	68	93	1919	37
Jianxin	1009	943	1952	35	0	32	50	489	35
Chengnan	1141	1141	2282	32	360	61	107	1666	32
Xiaoshan	726	720	1446	28	0	N.A	N.A	N.A	N.A
Total	5569	5541	12556	184	360	194	305	7564	184

Note: persons below poverty line from City Civil Administration Bureau. Estimate of beneficiaries below poverty line from District Water Resources Bureau and all the village committees.

Table 3: Investigation of Basic Conditions of Population

Village	Total population	Per capita income (CNY)	Beneficiary population	Beneficiaries below the poverty line	Proportion %	women	Proportion %	Ethnic minority population	Proportion %
Xinzhai	2408	2781	2407	28	1.16	1183	49.13	141	5.86
Xinshui	2064	3800	1083	52	2.52	565	27.37	57	2.76
Xinchun	2404	3350	1919	37	1.54	955	39.73	16	0.67
Jianxin	1952	3600	489	35	1.79	236	12.09	125	6.40
Chengnan	2282	2900	1666	32	1.40	833	36.50	14	0.61
Xiaoshan	1446	2650	N.A	N.A	N.A	N.A	N.A	N.A	N.A
Total	12556		7564	184	1.66	3773	33.96	353	2.18

Note: Beneficiaries below poverty line from the Wudang District Water Resources Bureau and all the village committees.

2.2.2 Territory and Infrastructure

21 Land use rights of farmland are specified in thirty-year contracts in accordance with the Rural Land Contracting Law of PRC effected in August 29, 2002. Land allocations were calculated based on the number of people in the household, all of whom are listed on the contract for land use rights. The ethnic minority people in the irrigation area obtained their land use rights in the same way as do Han people. Table 4 shows common land held by each of the villages in the project area.

22 The data from Xiuwen Land Resources Bureau (2006) show that the total farmland is 20,752 mu, and forest land 10,910 mu. There is one primary school in three of the six villages.

Table 4: Village Land Holdings

	Total land	Farmland (mu)	Of which				Community forest	Community facilities (roads, schools, etc.)
			Paddy field	Dry farmland	Vegetable land	Orchard		
Xinzhai	5943.8	3500.4	1678.8	1669.9	151.7	500	1053.8	
Xinshui	7656.6	4471.8	1840.6	1815.2	816	185	815.0	4 km village road and 1 primary school
Xinchun	4304.5	3027.9	1407.6	1418.6	201.7	310	256.4	1 primary school
Jianxin	923.1	755.3	158.5	383.6	213.2	1200	1.7	5 km village road and 1 primary school
Chengnan	9618.2	4444.6	1905.9	2417.7	121	150	1834.8	3 km village road
Xiaoshan	16081.7	4552.1	1589.4	2911.3	51.4	N.A	6947.9	
Total	44527.9	20752.1	8580.8	10616.3	1555	2345	10909.6	

Sourced from Xiuwen Land Resources Bureau (2006)

2.2.3 Resource use patterns

23 The irrigated farmland is used for cultivation of rice, followed by rapeseed in winter where sufficient water is available, while dry farmland for cultivation of corn and wheat. Some of the irrigated farmland and dry farmland is planted for vegetables. As shown in Table 5, the survey indicated that the irrigated farmland is nearly as large as the dry farmland with size of 6991.4 mu and 7705 mu respectively. The vegetable land and orchards are relatively smaller as 1503.6 mu and 2345 mu respectively.

Table 5 : Current Agricultural Land Use Patterns

Village	Irrigated farmland (rice-rapeseed) (mu)	Dry farmland (corn-wheat) (mu)	Vegetable land (corn-wheat) (mu)	Orchard (corn-wheat) (mu)
Xinzhai	1678.8	1669.9	151.7	500
Xinshui	1840.6	1815.2	816.0	185
Xinchun	1407.6	1418.6	201.7	310
Jianxin	158.5	383.6	213.2	1200
Chengnan	1905.9	2417.7	121	150
Xiaoshan				
Total	6991.4	7705	1503.6	2345

Sourced from Land Resource Bureau (2006)

2.2.4 Migrant workers

24 The locals are accustomed to go outside of the village as migrant workers for additional family income during the non-farming seasons, and stay in the village for farming activities during farming season. There is no difference between the Han people and ethnic minority people for finding a job as migrant worker. Most of them are engaged in the assignment with no or little requirements for skills and technology. Some families with surplus working members have 1-2 members working outside of the village as migrant workers for the whole year.

2.2.5 Cultural beliefs and education

25 Miao, Yi and Bouyei people have distinct ethnic identities and language. They celebrate special festivals of their own during the year. Some people, especially women,

wear distinctive ethnic clothing, at least on some occasions. Most ethnic minority people also speak the Guiyang dialect of Chinese and Mandarin. In the subproject area, most agricultural and other livelihood activities are very similar for ethnic minorities and ethnic Han people.

26 On education, the ethnic minorities are as same as ethnic Han people. Their children have the same opportunities as other children, as required by the nine-year compulsory schooling system in China, which requesting that all young people finish the primary and secondary schooling. In addition, the national privilege policy gives them special consideration of adding scores for high school and college admissions

2.2.6 Public Health

27 Luckily, no case of AIDs is reported in the subproject area. Due to the project construction, a large quantity of workers will mobilized onto the area, which will inevitably increase the risks of exposing the ethnic minority people to the communicable diseases. The local communicable disease control agencies have made great efforts on the issues related to the public health. Whether the project is implemented or not, such efforts will be kept on. More efforts and measures will be taken by the EA and contractors during the project construction for public health, with assistance from Public Health and Disease Control Center.

2.2.7 Gender issues

28 Gender equality is established legally by the Chinese Government to ensure all men and women have the same legal rights. Chinese women participate in agricultural production, as is quite common as in other places over the world. The surveys indicate that farming activities are shared by men and women, while women having primary responsibility for domestic activities as cooking, childcare, animal-care, etc., and men for arduous farming activities as ploughing, etc. But there are some other examples in the project area as men doing housework and childcare, and women ploughing. The family income is usually jointly managed by husband and wife, especially that coming from agriculture, while women play more roles in the management of family income and expenditure.

2.2.8 Marriage

29 On marriage, there is no substantial difference between ethnic minority people and Han people, inter-marriage is quite common, which is the indicator of similar socio-economic status and supported by the interviews and social surveys. Besides, the ethnic minority people are not considered by the local government as vulnerable groups due to the similarity with Han people.

2.3 Government Activities for Ethnic Minority Development in the Subproject Area

30 Table 6 summarizes the main government activities implemented to support social and economic development in the project area, including specific programs implemented by the Bureau of Ethnic Minorities and Religious Affairs. These programs are specifically targeted at ethnic minorities, particularly those living in ethnic minority autonomous towns and villages. These are ongoing programs independent of the Project, but will be coordinated with Project activities where possible. These activities, with some particular arrangements for the ethnic minority people, will promote the social and economic conditions in the subproject area.

Table 6: Existing Government Programs for Ethnic Minorities in Subproject Area (2007-2010)

Programs	Target/indicators	Budget ('000CNY)	Implementation Agencies	Timing
Agriculture Development Plan	(1) Develop vegetable production base in Longchang town; (2) Develop fruit production base in Longchang town; (3) training programs on the plantation and livestock breeding, etc	89.9	Agricultural Bureau	2005-2010
Rural infrastructure – water	(1) Construction of 870 water pool in Longchang town, including 50 at Xiaoshan village, and (2) Increase of 2,610mu irrigation area, including 50 mu irrigation area at Xiaoshan village	2,740	Water Resources Bureau	2007-2008
Rural infrastructure, Culture and Public health Plan	Including water pool, bio-gas, clinic, TV & broadcasting, house, etc in the county. 7,300 targeted people among 1,685 households in Longchang town will be beneficiaries.	449,540 (Total investment in the County)	County government	2001-2010
Minority Health Care Assistance-Agriculture cooperative medical insurance	Subsidy of CNY 35 with CNY20 from central government and CNY15 from local government for each farmer, including the subproject area		Finance Bureau, Public Health Bureau, BEMA, etc	2006-
Total				

Source: Xiuwen BEMA (2006)

2.4 Local Social Organization and Stakeholder analysis

31 The main stakeholders for this project are the urban residents in the county town and farmers in the irrigation area. Secondary stakeholders include the Water Resources Bureau and governments at township and village levels. Generally speaking, the residents in the County town area are not subject to any negative impacts of the project, and the farmers in the irrigation area are impacted by fewer unfavorable factors and will gain greater benefits. According to the analysis of similar projects, they will increase economic income by CNY 200-300 per person per year as a result of the project. Therefore both the urban residents in the county town and the farmers in the irrigation area welcome the construction of this project very much.

32 As for the governments at various levels, their objective is to enrich the locality. The construction of this project will strengthen agricultural infrastructure, which can help guarantee increased agricultural yield and income. The project owner is the Water Resources Bureau which is the department authorized to administer water on behalf of the government. Its management objective is should follow that of the government. The project itself has a certain promotional role for local economy, which will drive the development of building material and service sectors, in keeping with the development purpose of owner and township/village governments. In addition, the design institute will gain benefit from doing the design work. In short, all different stakeholders welcome the construction of this project.

3. SUBPROJECT IMPACTS ON ETHNIC MINORITIES

3.1 Positive impacts

33 The main positive impacts of the subproject will be from the water provision for irrigation and drinking water for human and animals in the project area, as well as from the capacity development of the irrigation management agency. And the improved management will further contribute to better water supply for the farmers in the subproject area. The positive impacts can be described as followings.

- (1) **Agricultural Benefits:** It is estimated that, after completion of the subproject, the water will be provided for farmland of 6,842 mu in 2010, 6,636mu in 2015 and 6,468 mu in 2020. The ethnic minority people's farmland will be watered equally with Han people's farmland within the irrigation area. As mentioned earlier, ethnic minority people are scattered through the project area and not concentrated in any particular cluster. The field investigation shows that the output of rice and rapeseed will be increased by 150kg/mu, or income increase of CNY 600-800. If changing the crop pattern by introducing and planting more valued crops of vegetables or Chinese herb, as tomato or Yuxingcao (*Herba Houttuynia*, a Chinese herb), the typical suitable plant in the area, the income increase will be CNY1400-1800/mu. So the annual economic benefit of the ethnic minority people will be CNY200-300 per capita from the subproject;
- (2) **Clean Drinking Water:** It is estimated that, after completion of the subproject, the drinking water will be provided for 5,775 people and 3,991 animals in 2010, for 5,630 people and 4,170 animals in 2015, and for 5,490 people and 4,338 animals in 2020. The safe and clean drinking water for people and animal will benefit the livelihood of the residents, including the ethnic minority people, who constitute 4.24% of the total people in the subproject area.

The water channel in the irrigation area will cover 5 villages of Chengnan, Xinshui, Xinzhai, Xinchun and Jianxin. Based on the county town development plan, Chengnan village and some part of Xinchun and Xinshui village will be serviced by the county town water supply system, and others will be from the water channel. Presently the water provision of the residents in the villages is from the shallow underground water or surface water with no sanitary security. And the water quality is getting worse and worse, which is indicated in the environment monitoring results from the local environment protection agency. The project will provide safe and clean water for the local, so as to improve their health and livelihood. The county town water supply system will provide better water supply for about 40,000 people, including 37,000 urban residents in the county town, all villagers in Chengnan village and some villagers in Xinchun and Xinshui village. Around 3,000 ethnic minority people will be benefited from the county town water supply system. Of the 6,642 villagers getting water from the water channel, 140 are ethnic minority people.

- (3) **Temporary employment:** It is estimated that, during the construction, 280 workers consisting of 84 skilled workers and 196 unskilled workers, will be employed for the subproject. The total person/month of skilled and unskilled worker will be 5,040, i.e., 1,512 person/month of skilled worker and 3,528 person/month of unskilled worker. Prior to the construction, information of temporary employment will be circulated among the affected villages, including to ethnic minority people, and during the construction, liaison between the contractor and village committee will be kept for further information of employment, and as a means of encouraging them to utilize the employment opportunities. The payment rate for unskilled workers will be about CNY 20/day, i.e., CNY 600/month. According to the PMO, under equal conditions, priorities will be given to the

ethnic minority people for the opportunities of temporary employment, which will result in yearly income of CNY 7,200 for the ethnic minority people participating in the subproject construction.

34 In general, the subproject will benefit the ethnic minority people for better livelihood and poverty alleviation, and can be considered as an ethnic minority development project.

Table 7: Ethnic Minority Beneficiaries

Village	Area (mu)	Beneficiaries total	Male	Female	EM total	Male	Female
Xinzhai		2407	1224	1183	141	72	69
Xinshui		1083	518	565	57	27	30
Xinchun		1919	964	955	16	8	8
Jianxin		489	253	236	125	65	60
Chengnan		1666	833	833	14	7	7
Total	6468	7564	3791	3773	353	177	176

3.2 Negative impacts

35 Table 8 gives an overview the major negative impacts from the project. The main impacts will come from permanent and temporary land loss for the reservoir construction and disturbance from construction activities.

Table 8: Land Acquisition and Resettlement Impacts on Ethnic Minorities

	Area (mu)	AP total	Male	Female	EM total	Male	Female
Temporary land acquisition	275.3	61	31	30	3	2	1
Permanent land acquisition	373.93	0	0	0	0	0	0
Resettlement	0	0	0	0	0	0	0
Land use restrictions	0	0	0	0	0	0	0
Total	649.23	61	31	30	3	2	1

36 The permanent land loss from the subproject will be 373.93 mu of collective-owned land, which is not contracted to farmers in Xinzhai Village and Xiaoshan Village of Longchang Town. Among the land loss, there are 249.81 mu bush land, 124.12 mu barren lands, and no farmland loss. As the land to be lost has no other purpose of production, the land loss will have no impacts on the village's income. Of the land to be acquired for the subproject, 273.93 mu will be flooded by the reservoir and 100 mu be occupied by the dam. As the permanent land loss does not involve any contracted farmers, no specific ethnic minority people will be affected.

37 The temporary occupied land for the subproject will be 275.3 mu of collective-owned land, including: 50.8 mu paddy field, 43.8 mu dry land, 132.7 mu shrub land, and 48 mu unused land, used for water delivery pipeline, spoil area, material stockpiling site and construction access road etc, covering 5 villages. Of the 61 persons among 14 households to be affected by the subproject, 3 persons in one household are ethnic minority people. Compensation of the land will be paid in reasonable and adequate manner specified in the Resettlement Plan to all people affected, including ethnic minority people, for the temporary use during the construction. The temporarily occupied land will be restored to the original status after the construction, and returned to the households who own the usufruct. The effects on the temporarily occupied land would be minimal.

38 During the project construction, the emission, dust and noise resulted from the working activities might have some effects on the production, living and health of the ethnic minority people in the area. Necessary measures shall be taken to mitigate the potential negative impacts on the ethnic minority group.

4. PARTICIPATION PROCESS AND RESULTS

4.1 Consultation during subproject preparation

39 Table 9 shows the public consultation activities carried out at the site.

40 During the project preparation, the designer interviewed with and participated in the meetings with the local people for their opinions, including ethnic minority people and females. For example, the ethnic minority people in Waguanyao natural village, Xinzhai village, Longchang Town were interviewed in April, 2006.

41 In April and May, 2006, PMO organized two rounds of public participatory consultation activities with one focus group discussion by gender to hear the voices of local people including the ethnic minorities and female so as to identify their aspirations, needs and preferred options. As the records show that two public consulting meetings were held in the Xinchun and Xinzhai village respectively. Prior to the consulting meeting, notice was given to all the villages affected with the information of the meeting time, location, and purpose to encourage the local people participating the meeting. The participants of the consulting meetings are from all the affected villages, not only those from the village in which the meeting was held. The experts on ethnic minority people from Guizhou University were also interviewed to gain a better understanding of ethnic minority's customs, culture, etc. Table 9 lists the public consultation activities carried out during the PPTA, with the records attached in the Annex 1.

42 In addition, consultation has occurred more informally as part of field walkthroughs for irrigation system design, preparation of resettlement action plan, environmental impact assessment, and other activities. This EMDP will be disclosed to affected ethnic minorities through a public meeting and by making copies of the plan at township and village offices, including the township office of the Bureau of Ethnic Minorities and Religious Affairs.

Table 9: Public Consultation Activities

Type of consultation	Date	Location	Participants	Male	Female	Notes
Public Consultation	April 5, 2006	Xinchun Village, Longchang Town	68	52	16	48 villagers
Key Informant Interview	May 18, 2006	School of Humanities, Guizhou University	3	3	0	Research Institutes on Ethnic Groups
Key Informant Interview	May 18, 2006	Guiyang Water Resource Bureau	6	4	2	Guiyang Water Conservancy Association
Gender Group Discussion	May 29	Xinzhai Village, Longchang Town	48	32	16	
Public Consultation	May 29	Xinzhai Village, Longchang Town	38	22	16	
Key Informant Interview	May 29	Xinzhai Village, Longchang Town	9	N.A	N.A	Agricultural Marketing Association

4.2 Aspirations, needs, and preferred options

43 For the EMDP, the overall conclusion from public consultation is that the needs and aspirations of ethnic minorities in the project area are the same as their Han neighbors. They want improved water supplies for domestic use and agriculture. They want to be fully included in project activities and are similarly interested in participating in the water user association. They want fair compensation for any major land acquisition, but are willing to voluntarily provide minor amounts of land for expansion or construction of field canals.

5. ACTION PLAN

44 The Project will apply a mainstreaming strategy to ensure full participation of ethnic minority people and ensure that any persons affected by land acquisition and resettlement are better off after the project. Table 10 presents the main ways in which the project will have impacts on ethnic minority people, targets, number of ethnic minority people affected, budget information, and timing.

Table 10: EMDP Action Plan

Measures	Targets/Indicators	EM People Beneficiaries/APs	Budget	Timing
Protection of ethnic minority communities from construction disturbances	<ul style="list-style-type: none"> Prohibiting nighttime construction Reconstruction of damaged irrigation/drainage systems 	533 ethnic minority people in 6 villages	Included in Project costs, covered by EIA	2007.1~2008.12
Communicable disease control	Clinic services for construction camps and communities Health education in project area villages	In all construction camps and nearby villages	Included in Project budget, included in contract document	2007.1~2008.12
Promoting women's participation and decision-making	A series of meetings	EM women in the project area	In government budget	2007.1~2008.12 and operating period afterward
Compensation of Land acquisition	<ul style="list-style-type: none"> Timely payment of compensation for temporary occupied land Restore the temporary occupied land soonest after work completion 	Affected households of ethnic minority	In Resettlement Plan	2007.1~2008.12
Assistance for vulnerable groups as disabled and poor	Establishing special funds of CNY5,000 for vulnerable groups	Potential affected vulnerable groups as disabled and poor, especially those of EM	In Resettlement Plan	2007.1~2008.12
Construction employment of unskilled worker from ethnic minority group	Local labor, including EM, with 20% inclusion of women	APs, especially those of women or EM	Included in Project budget and civil works contracts	2007.1~2008.12
Participating in the project's operation and management	Establishment of WUA, including 10% of EM members	Representatives from EM	In project operating budget	Project operation period

5.1 Measures to avoid, mitigate, or compensate for the adverse project effects;

45 This project involves construction of a new reservoir and irrigation system. During design, the need for land acquisition has been minimized whenever possible. Compensation will be provided for temporary and permanent land acquisition for improvement of primary and secondary canals. For development of field canals (secondary and tertiary canals) provision of land will be coordinated through village committees and WF, with voluntary consent of those with land use rights documented for any voluntary donations, exchanges and other locally-managed arrangements.

46 *Labor safety and hygiene.* Public health education and service outreach will be provided to prevent negative impacts for construction workers and neighboring communities from communicable diseases including HIV/AIDS. In light of construction requirement for the project, technically feasible and economically practical safety and protection facilities shall be designed to prevent from occurrence of safety accident and occupational injury and to ensure life and property safety and designing principle shall conform to national and industrial laws and rules as follows:

- (1) Safety production law of PRC (November 1, 2002)
- (2) Labor Law of PRC (January 1, 1995)
- (3) Occupational disease protection and cure law of PRC (May 1, 2002)
- (4) Fire prevention law of PRC (September 1, 1998)

47 The construction companies should have an investigation of the communicable disease situation among the construction personnel before they enter the site, which should be documented. Construction personnel should receive sampling health examination regularly and annually at construction stage, the number of which is reached by 10% of the number of persons investigated and put on file. Each construction company should clearly appoint the responsible person for sanitation & epidemic prevention who are supposed to manage according to the epidemic situation control and report system promulgated by local disease control authority, and to accept the supervision by sanitation and disease control authorities. Medicines and apparatuses for the treatment of common communicable diseases should be provided up in construction sites and medicines for preventing communicable diseases should be provided for the workers by the contractors and for the villagers to protect public health.

Water Source Protection in Reservoir Area.

48 The project will carry out measures to popularize ecological agriculture vigorously, to reduce the use of chemical fertilizer and pesticide, and to prohibit the use of highly toxic pesticide so as to reduce the generation of surface pollution; to lay an embargo on direct discharge of sanitary wastewater from peasant households surrounding the reservoir area into the reservoir area; To control the development of aqua-culture in the reservoir area and to strictly prohibit intensive breeding by manual feeding. Information about these restrictions will be disseminated by the township government and village committee, as well as in project-related meetings.

49 Presently the sanitary wastewater is discharged on the ground surface and naturally dried, or temporarily stored in farmer's toilet pool before spraying onto the crops. During the operation period, construction of bio-gas digesters will be encouraged and, if necessarily, assistance will be given to the farmer, including the ethnic minority people, for the construction to collect the sanitary wastewater for irrigation.

50 When the reservoir is completed, local government will set a water source protection area in accordance with the related government regulations. For a small reservoir, the protection area is usually below the flooding elevation of the reservoir. Within this area, there is currently no resident house or no production activities on the collective owned bush land and barren land. The decision of determining the protection area will therefore not have impacts on the livelihood and production of the locals. Presently there is no fishery in the river section, so it will have no impact on the residents to control the development of aquaculture in the reservoir area and to strictly prohibit intensive breeding by manual feeding.

5.2 Measures to ensure project benefits will accrue to indigenous peoples

51 The primary strategy is a mainstreaming approach to ensure full participation. Beneficiaries are participating in planning for the project, including preparation for future operation and maintenance of water provision for irrigation and drinking water for human and animals. Preference will be given for local labor during construction, including women and men, with inclusion of ethnic minorities in appropriate proportion to their presence in the local population.

52 The potential impacts by the temporary occupied land to the locals, including the ethnic minorities, shall be compensated in accordance with the Laws in China and Regulations of the related local governments. The temporary occupied land shall be restored to its original conditions as soon as possible once the works are completed, and returned to the affected people who own its usufruct.

53 Consulting with the PMO, during the construction, priority for temporary employment opportunities will be given to the affected people, with more consideration on the ethnic minority people, for the unskilled worker requirement under the same conditions. Such arrangement will increase their income so as to improve their livelihood and production.

54 Integrated planning for multi-purpose reservoir management will provide a means to assure input from stakeholders and consideration of their interests in balancing reservoir water allocation among multiple uses for rural domestic water supply, agriculture, and environmental ecological flows. All villages should be represented in the stakeholder panel established to provide stakeholder input on planning for multipurpose reservoir operation.

55 Water User Association (WUA) will be established for the water allocation in the water channel to ensure all domestic use and the farmland, whether titled or non-titled, to be watered in a well-organized order with fair and equal treatment to all villagers within the irrigation area. WUA is a non-government and non-profit organization with its members from all water user beneficiaries of the natural villages within the irrigation area. Its duties are to operate, maintain and manage the water channel under the water resource authority by the principles set forth and agreed. The member of WUA can be a village leader or villager member, including ethnic minority people and men and women, as long as he/she is a capable person with good mind and accepted by the villagers.

5.3 Measures to strengthen social, legal, and technical capabilities of government institutions to address indigenous peoples issues

56 The Xiuwen County Water Resources Bureau will be the Implementing Agency for this subproject, which will be supported by Longchang township government. An interagency task force to carry out field activities will include staff from the Bureau of Ethnic Minority and Religious Affairs.

57 Some relevant capacity already exists in the Bureau of the Ethnic Minorities and Religious Affairs at the Municipal, County and Township levels. They will be involved in

planning and implementation project activities, including coordination of relevant activities done using their own resources. The Xiuwen County Bureau of Ethnic Minority and Religious Affairs has a staff of 5 persons.

58 Training will be provided to develop capacity for all aspects of project implementation, which will include the measures to ensure full participation of ethnic minorities in the project and equitable treatment of those affected by land acquisition. The Guiyang Municipal Bureau of Ethnic Minority and Religious Affairs will provide oversight and support.

59 The Municipal Bureau of Ethnic Minority and Religious Affairs and equivalent bureaus and staff at lower levels of government will carry out activities to promote the welfare of ethnic minorities. Table 6 summarizes activities that are expected to have impacts on the subproject area which may support or enhance project impacts.

5.4 Involvement of local organizations and non-governmental organizations with expertise in indigenous peoples issues

60 The Ethnic Minorities and Religious Affairs Bureau for Xiuwen County will be part of the Project Implementing Office. Relevant experts from the Guizhou Nationalities Institute may take part in the annual review of ethnic minorities development in the project and may be asked to advise if specific needs are identified.

5.5 Implementation Schedule

61 The implementation schedule for the subproject is presented in Figure 5-1.

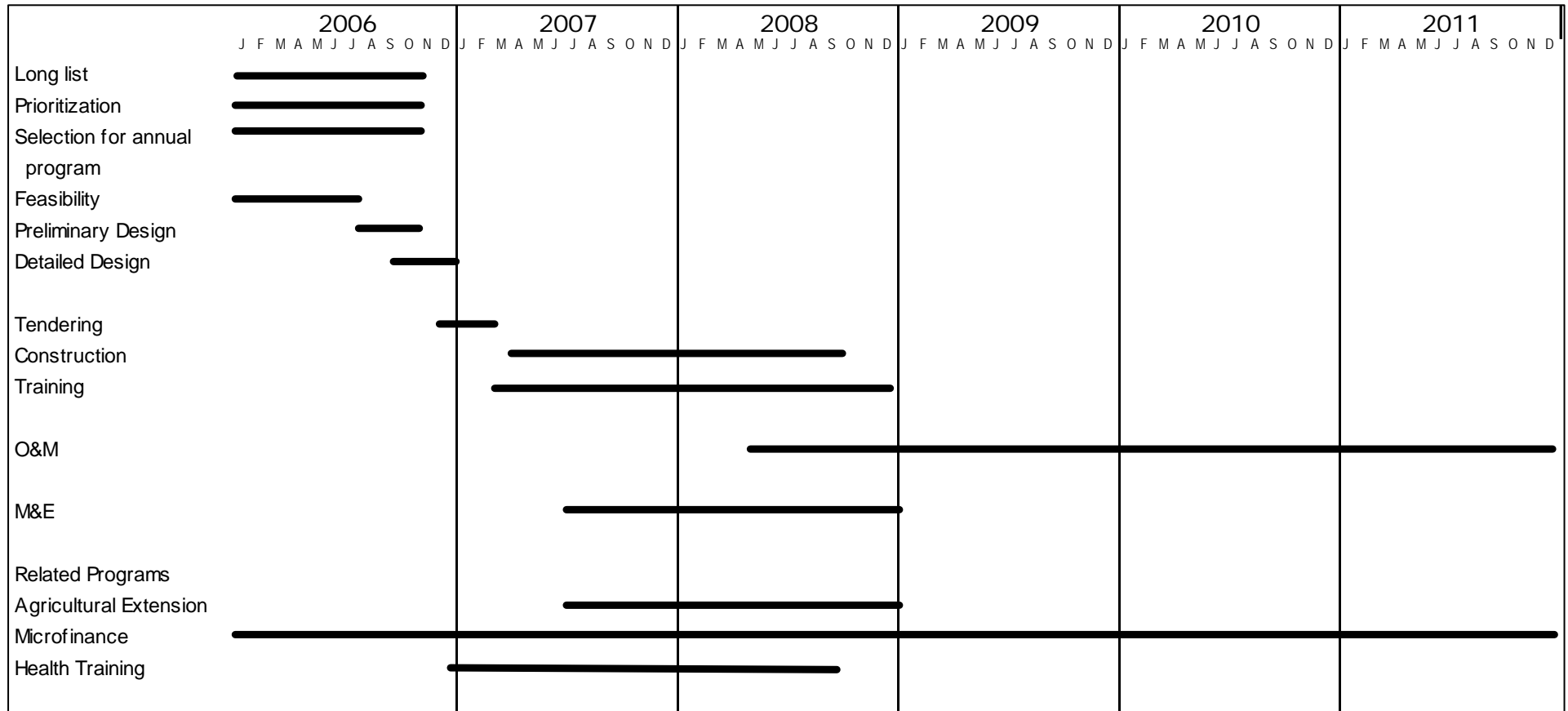
6. BUDGET ALLOCATION

62 The budget sources for activities in this EMDP are shown above in the EMDP Action Plan in Table 10. Funding will be provided as part of the project budget, including civil works, and the resettlement action plan for the subproject. Related activities by the Ethnic Minorities and Religious Affairs Bureau in the Project Area were discussed above and shown in Table 6 on Related Government Activities for Ethnic Minority Development.

7. MONITORING AND EVALUATION

63 Subproject reports will document the number of ethnic minority people on whom the project has impacts, positive and negative. The PMO and the IAs will monitor the targets identified in the EMDP and update information as implementation proceeds. Prior to the subproject implementation, a baseline survey will be carried out to obtain information on the key indicators for monitoring and evaluation. Budget for this survey will be included in the project budget for monitoring and evaluation. The baseline survey will include adequate information for each subproject, covering at least 30 ethnic minority households. The PMO/IA will prepare semiannual reports on progress in implementing the EMDP and updating the information. Further, Information from this subproject will be included in an annual review of ethnic minority development in the project that will compile and analyze relevant information and prepare recommendations for enhancing impacts.

Figure 5-1: Subproject and EMDP Implementation Schedule (Gantt Chart Timeline of Activities and Milestones)



Annex 1: Records of Public Participation and Consultation**Jinlong Reservoir Subproject - Site visit**

Name	Jinlong Reservoir Field Survey Record
Time	April 5, 2006 9: 30~12: 20
Location	Jinlong Reservoir Project Junction and Canal Construction Field
Field Staffs	(1) PPTA: Mr. Bryan Bruns, Ms Zhou Shan, Mr. Yin Jianjun, Miss Xu Yingxin, Jiang Gongliang, Nie Danping, Mr. Luo Zhengg (2) Luo Kai Deputy Director of Xiuwen County WRB (3) Ming Chengqiang Chief of Planning Department of Xiuwen County WRB (4) Liu Mingzhong Stationmaster of Xiuwen County Longchang Water Resource Station (5) Ruan Xianming Han Age:7 Villager of Xiuwen County Longchang Town Xinzhai Village
Field Survey Record	
No.	Questions
1	About the construction of the first barrage and its canals: Built in 1960s financed by local government. Canals were upgraded in 1992 from former earth canal to present concrete-floated stone canal built with cement laid stone masonry.
2	About the management and maintenance of canals: Replies: (1) Maintenance is mainly conducted by villagers organized by local village commissions. Dredging is implemented by local people while financed by the government. (2) Existing canal repairing is not conducted in an agreement or contract form, the repairing arrangement for water resource projects in this county is summarized as follows: i) projects larger than Small Type A (including Small Type A projects) are managed, repaired and maintained by county WRB; ii) projects smaller than Small Type A but larger than Small Type B (including Small Type B projects) are managed, repaired and maintained by local water resource stations; and iii) projects smaller than Small Type B are mainly managed, repaired and maintained by village commissions. (3) Repairs of existing canals below 1000yuan should be solved by local people; repairs above 1000yuan should be applied by local village commissions to water resource stations and solved by the township government in condition of sufficient funds; the ones can not be solved by the township government should be submitted to county WRBs and solved by which based on annual distribution of water resource funds. County WRBs must reply timely to the repairs cannot be met.
3	Discuss with local people (Ruan Xianming) about repair and maintenance affairs: Replies: (1) the canal is repaired and maintained annually, all the beneficiaries participate in this work. I also took part in the repairing work every year except last year due to my age. (2) maintenance mainly refers to dredging and repair of small breakage. Cement is merely used in the repairs except for large breakage, and earth and stone are mainly used in leakage stoppage. (3) during irrigation season, farmers take water along the canal every day, which results in the lack of water. (4) existing roads were constructed by people who mined aluminum illegally. Now the roads are out of use, since illegal mining has been forbidden.
4	Issues about water intake fee: Cost is charged by hours, 8yuan/hour in general.
5	The sources and arrangement of management, maintenance and repair costs: Luo Kai replies:

	<p>(1) fees mainly come from the county water supply and irrigation supply charges.</p> <p>(2) water tariff, the reservoir mainly supplies raw water, at present the highest raw water tariff is 0.3yuan/m³, the lowest is 0.12yuan/m³, including water resource fee.</p> <p>(3) incomes should be turn in to special account of the county financial bureau (only used for the management and maintenance of this project) and the capital should be used strictly in accordance with application and approval procedures.</p>
6	<p>Existing water resource units in Longchang Township: Liu Mingzhong replies:</p> <p>(1) four staffs in water resource station are responsible for the management of water resource of 36 villages</p> <p>(2) responsible for an irrigation area of about 30000mu</p> <p>(3) canals with a total length of 317km, 50 times inspections will be taken each year, and 2~3 points for each inspection.</p> <p>(4) the whole town has more than 30 ponds and 60 water intake stations</p> <p>(5) water resource station has management and working procedures for routine inspection and maintenance. Routine inspection should be arranged according to working schedule.</p> <p>(6) water resource station will provide technical guidance and training at least one time each year on village-managed water resource facilities to management, maintenance and repairing staffs.</p>
Canal Construction Field Survey Records	
1	Most of existing canals are heavily silted up.
2	Several damaged places and leakages were observed.

1st Round of Public Consultation in Xiuwen County

Name	1 st Round Public Consultation on Jinlong Reservoir Subproject in Xiuwen County
Time	14: 00~17: 00, April 5, 2006
Venue	Xinchun Primary School in Xinchun village, Longchang Town
Participants from agencies	20 participants with 12 male and 8 female from Xiuwen County Ethnic Minority and Affair Bureau, Xiuwen County Disease Control Center, Xiuwen County Health Bureau, Xiuwen County Financial Bureau, Xiuwen County Environment Protection Bureau, Xiuwen County Statistic Bureau, Xiuwen County Agriculture Bureau, Xiuwen County Forest Bureau, Xiuwen County Construction Bureau, Xiuwen County Development and Reform Bureau, Xiuwen County Women's Federation, Longchang Town government, Xiuwen County Water Resource Bureau, Longchang Town Water Resource Center
Participants from villages	48 participants with 38 male and 10 female from Nos 1-13 village groups of Xinzhai village, Nos 2-6 village groups of Xinchun village, Chengnan village, Nos 1,3 and 5 village groups of Jianxin village
PPTA staff	Bryan, Ms Zhou San, Mr. Ying Jianjun, Ms Xu Yingxin, Mr. Jiang Gongliang, Ms Nie Danping, and Mr. Luo Zheng
Presided by	Ms Hu Zhenping, Chief of Water Resource Division, Guiyang Water Resource Bureau
Recorded by	Mr. Luo Zheng
No	Description
A	Briefing the purpose and requirements of the meeting by Ms Hu Zhengping
B	Project introduction by Mr. Luo Yasong, Guiyang Water Resource and Power Design Institute
C	Introducing the meaning of the consulting meeting and the project scope by Mr. Luo Kai, Deputy Director of Xiuwen County Water Resource Bureau
D	Group Discussion
E	Minutes of group discussion
1	<p>1st Group</p> <p>Issues on the design:</p> <p>a. The project will benefit the locals, we will give our support to the project, but the key issue is the permanent land loss;</p> <p>b. How to treat the water and soil conservation around the reservoir? and</p>

	<p>c. How to treat the environment around the reservoir? Suggestions on the design: a. Permanent land loss shall be compensated in accordance with re regulation issued by State Council, and priority of employment shall be given to the household of land loss; b. Mining and quarry shall be stopped and tree cutting be forbidden in the area surrounding the reservoir for the water and soil conservation; and c. Standard management shall be carried out. Sand dredge shall be taken during the construction of reservoir. Issues related to the construction a. What arrangement will be made about the temporary land occupation and standing crops damage during the construction? b. What arrangement will be made about the temporary employment during the construction? and c. What arrangement will be made about works damage during the construction? Suggestion related to the construction a. For temporary land occupation, compensation will be paid for the standing crops, and restoration to its original state will be made by the contractor after works completion; b. Priority of temporary employment will be given to all the people living within the village affected under the same conditions; c. The damaged works such as water channel, road, etc, will be restored as required; and d. Priority of local material transportation will be given to the locals under the same conditions.</p>		
2	2 nd Group		
	Project stage	Issues	Recommendation
	Design	a) Are the pumping station and flooding channel available? b) Can it be used for tourist development? Will the downstream channel be improved?	a) Hope the government will construct the project as soon as possible, as it will benefit us. b) The water channel shall be connected with that to Wangguan reservoir.
	Construction	a) Compensation of loss during construction, and that of structure loss and fruit trees? b) Relocation of tombs? c) Will the project be commenced within this year?	a) Hope the government will resolve all the proposed issues. b) Priority of temporary employment and transportation shall be given during the construction
	Operation and Management	a) Will the water be charged or free for use after completion of the reservoir construction? b) Will the water tariff be the same for domestic use and agricultural irrigation? c) Will the water be free for domestic use?	a) Resettlement shall be made for the damage or loss of households affected during the construction. b) The promise to the farmers shall be undertaken after the completion of reservoir construction.
3	3 rd Group a) The land occupation shall be compensated in accordance with state laws and regulations. b) The pollution from other water channel shall be solved. c) What is the irrigation mode? d) Will it be charged for agricultural irrigation? e) Will the agricultural production be affected by the construction activities? f) Will the water be sufficient for the original existing irrigation area? g) The water for people and animal drinking shall be aqua-cultured. h) If planned as tourist area, will the water be polluted?		

	i) Particular planning shall be made to ensure good work quality. j) The land compensation rate shall be consulted with the farmers affected. k) What arrangement will be made for the damage out of land occupation? and l) They agreed to construct Jinlong reservoir and hope it will be completed as soon as possible.		
4	4 th Group		
	Project stage	Issue	Recommendation
	Design		a) Water shall be available for the area from Yangyayan to Wujiawan b) Additional pumping station shall be provided for Baiyan natural village of Xinzhai administrative village and Caibai natural village of Xinchun administrative village c) Adding a pumping station for Changpoling of Xiaohegou
	Construction	Commence the work as soon as possible	a) Attention shall be given for safety. b) No delay for work commencement. c) Repair the water irrigation channel and ditches at Xiaoyakou. d) Providing tap water for Waguangyao natural village after completion of the construction
Operation and Management		a) After completion of the reservoir construction, the water tariff shall not be high b) After completion of the reservoir construction, repair or clearing the mud in the irrigation channel shall be carried out by the farmers	
5	Government agency		
	Project stage	Issue	Recommendation
	Design	a) The water quality of existing water resource is not stable	a) Attention shall be given to the affiliated facilities for irrigation b) Consideration shall be given for replacement of water resource
Construction	a) Temporary land occupation	a) Less forest land occupation b) Respecting the ethnic minority's customs c) Making good coordination to ensure smooth progress of the construction d) The land occupation shall be properly treated with no problems reserved for the local government e) The charged water tariff shall be fully consulted with the local people.	
F	Answers for some of the questions raised during group discussion by Mr. Luo Kai, Deputy Director of Xiuwen County Water Resource Bureau		

	<p>a) The affiliated facilities for irrigation will be made at the same time.</p> <p>b) The land occupation and standing crops will be compensated in accordance with the government polices.</p> <p>c) The will be surely charged for the purpose of better provision of water for irrigation and of promotion of saving water.</p> <p>d) The contractor will be selected by bidding, and the employer will suggest the contractor to give priorities of employment for the locals.</p> <p>e) Respects will be surely given to the local customs.</p> <p>f) For the water and soil conservation, the forest surrounding the reservoir has been planted. The government is organizing the related agencies such as Land Resource, Environment Protection, Forest and Water Resource to reinforce the supervision. The land occupation during the construction will be compensated.</p>
G	<p>Answers for some of the questions raised during group discussion by Mr. Luo Yasong, Guiyang Water Resource and Power Design Institute</p> <p>a) The pumping stations at Caibaichong and Xiaohegou will be built at the same time with Shatian pumping station.</p> <p>b) Measures for the sand dredge have been considered in the design.</p> <p>c) As the reservoir will be used for providing drinking water, aqua-culture by manual feeding is not allowed, but raising fish be natural weeds can be made.</p>
H	<p>Summary of written opinions collected from the villagers:</p> <p>a) When construction Jinlong reservoir, will the water resource of Wangguan reservoir be affected.</p> <p>b) Prolong the investment return period.</p> <p>c) As the rural area is relatively poor, consideration of return from the beneficiary shall be given at a low price so to make a balance between the investment return and farmer's affordability.</p> <p>d) Consideration shall be given to Yangyayan when constructing Jinlong reservoir. Yangyayan is a pumping station at the downstream of Yangyayan. The reservoir and Yangyayan pumping station will be critical for agriculture irrigation of 6 village groups of Xinchun administrative village. Attention shall also be given to the safety after the completion of reservoir construction.</p>

Minutes of the Meeting with Research Institutes on Ethnic Groups

Time: 9: 30-10: 45 Am, 18 th , May, 2006
Venue: School of Humanities, Guizhou University
PPTA Participants: Miss Xu Yinxin and Mr. Ruo Zhen
PMO Participants: Ms Xu Ping and Mr. Kong Lingshen
<p>Experts Participants from the Institute:</p> <p>(1) Wang Liangfan, Professor, Director of Research Institute of Minority Languages and Cultures in Southwestern China at Guizhou University</p> <p>(2) Liu Feng, Associate research fellow and PhD in anthropology, Director of Research Institute of Anthropology at Guizhou University</p> <p>(3) Cao Duanbo, Associate professor and PhD in anthropology, from the School of Humanities at Guizhou University</p>
<p>Meeting Minutes:</p> <p>1. Shallow plowing is normally practiced by minorities in relatively meager areas. Different cropping patterns are adopted by different minorities in different area with different ecological conditions.</p> <p>2. Throughout GM, ethnic minorities share with the Han People basically the same customs and lifestyles in many respects, with a relatively high degree of integration.</p> <p>3. Project implementation shall satisfy ethnic minorities living in project areas. In some areas,</p>

<p>some ethnic minorities are relatively converged via villages as the basic unit, probably featuring clanship.</p> <ol style="list-style-type: none"> 4. In case that land belonging to ethnic minorities is seized or their housing is expropriated, consultation should be held with local people, with respect paid to their religions and beliefs. Their cultural and psychological recognition shall be obtained in the event of relocation or land acquisition. 5. Interaction within communities can be adopted to encourage the involvement of ethnic minorities into the project so that they can be informed of project composition & prospect and their endorsement and recognition can be obtained in terms of building construction features. 6. In areas where ethnic minorities live together, Shaikhs with authority exist in some areas so that the consultation with them can facilitate the solution of problems arising. 7. Project Implementation brings about opportunities to ethnic minorities, such as improvement to housing, transportation, among other infrastructures. 8. Traditions and customs of ethnic minorities shall be respected during mass relocation, for example, some ethnic minorities may prioritize “Fengshui” in building construction. 9. Land acquisition may intensify the shortage of land per capita and negatively affect life and production of ethnic minorities. Relevant mitigation measures shall be taken to achieve “sustainable development” in their life and production. 10. Compensation in cash alone can not solve fundamental problems in land acquisition and resettlement. Due attention should be paid to their living & production conditions and customs so as to preserve their cultural integrity as much as possible. 11. Project implementation shall benefit the ethnic minorities in terms of production and life through “localized” resettlement in accordance with their customs.
<p>Summary:</p> <p>With relatively a high degree of integration, throughout Guiyang Municipality, ethnic minorities share basically the same lifestyle, production mode, and customs with neighboring Han People. Project Implementation may bring about opportunities to ethnic minorities, such as improvement to housing, transportation, among other infrastructures. In case that land belonging to ethnic minorities is seized or their housing is expropriated, consultation should be held with local people, with respect paid to their religions and beliefs, so that their cultural and psychological recognition could be obtained. Through the involvement of ethnic minorities into the project so that they can be informed of project composition & prospect, project implementation shall benefit the ethnic minorities in terms of life and production.</p>

Minutes of the Meeting with Guiyang Water Conservancy Association

Time: 3: 00-4: 00 Pm, 18 th , May, 2006
Venue: Guiyang Water Resource Bureau
Participants from PPTA into the Meeting: Miss Xu Yinxin and Mr. Luo Zhen
Participants from PMO into the Meeting: Ms. Xu Ping and Mr. Kong lingshen
Experts Participating into the Meeting: 6 members from Guiyang Water Conservancy Association Mr. Zhang Bin, Mr. Li Guihua, Ms. Song Rui, Mr. Mo Jiang, Ms. Chen Xiaodan and Mr. Zhou Hangping
Meeting Minutes: <ol style="list-style-type: none"> 1. Water conservancy project is beneficial to the improvement in living and production conditions of farmers and ethnic minorities. 2. Water conservancy project will alleviate poverty through improvement in living and production conditions such as irrigation and water supply. Ethnic minorities in project area shall benefit equally from the Project. 3. Completion of water conservancy project shall be beneficial to living and production conditions of women and ethnic minorities in project area, for example, improvement in irrigation can reduce manpower invested in irrigation draft and farming and improve yield. 4. Throughout Guiyang Municipality, ethnic minorities share with the Han People basically similar customs and lifestyles in many respects, with a relatively high degree of integration.

<ol style="list-style-type: none"> 5. In rural areas of Guiyang, equality of men and women is practiced with women participating into farming. As a result, improvement in irrigation shall be beneficial to the reduction of women's labor intensity. 6. In preparatory period of the project, opinions and suggestions from ethnic minorities, women and households benefiting from irrigation draft shall be solicited as much as possible. During project operation, households benefiting from the project shall be mobilized to participate into simple maintenance work etc. 7. Public opinions shall be solicited on canal route selection, for example, the implementation of water and soil conservation project shall be allowed to initiate until public approval is obtained in mass rally. 8. There exist many difficulties in establishing a water consumer association to let benefiting households participate into project operation, management and maintenance as a future development. Its establishment depends on physical circumstance in Guiyang and project area, with project scale and category taken into full consideration. Pilot program for the establishment of water consumer association can be launched in areas with proper conditions, with its expansion throughout Guiyang Municipality step by step adjusted to local conditions when practical conditions permit. 9. It can be considered that technical service center for water and soil conservation might be established for water and soil conservation project, with the center in charge of water and soil reservation management and pumping irrigation specifically. Water price shall be set after soliciting public opinions, with water resource management subject to market mechanism.
<p>Summary:</p> <p>Throughout areas involved in the ADB-financed project in Guiyang Municipality, ethnic minorities share with the Han People basically the same customs and lifestyles in many respects, with a relatively high degree of integration. Completion of water conservancy project shall be beneficial to the improvement in living and production conditions of women and ethnic minorities in project area. Opinions and suggestions from ethnic minorities, women and households benefiting from water access should be solicited as much as possible throughout the project.</p> <p>There exist many difficulties in establishing a water consumer association , whose establishment depends on physical circumstance in Guiyang and project area, with project scale and category taken into full consideration. Pilot program for its establishment can be launched in areas with proper conditions, with its expansion throughout Guiyang Municipality step by step adjusted to local conditions when practical conditions permit.</p>

Gender Group Discussion

Title	Jinlong Reservoir construction gender panel discussion
Time	From 9: 30 to 11: 00 am on May 29th, 2006
Venue	In a villager's home in Xinzhai Village, Longchang Town, Xiuwen County
Government Agencies	Xiuwen Water Resource Bureau, Longchang Town Water Resource Station
Villagers representatives	48 representatives, among which 16 females, 32 males.
PPTA Staff	Miss Xu Yingxin, Mr. Luo Zheng, Miss Nie Danping
PMO	Kong Lingshen
Recorder	Miss Xu Yingxin, Mr. Luo Zheng
<p>Male Group</p> <ol style="list-style-type: none"> (1) Local men and women have the equal status. Women do more housework comparatively; (2) Generally men do more heavy work like plowing and some of women also get involved in it. The rest of the farm work is done by both of them. There is no clear and specific requirement what kind of farm work should be done by men or women; (3) The financing income in the local place mainly depends on domestic breed aquatics and the scale is not big. The income of men is almost equal. In leisure seasons, young men and women go out for jobs for additional income; (4) Both men and women can manage the money, but usually the money is in the charge of 	

<p>women; Both men and women can disburse the expense, generally with the premise of discussion the one who manages the money will be responsible for disbursement;</p> <p>(5) They have equal rights on marriage. The rate of divorce is low because people find their husbands or wives by their own will;</p> <p>(6) There are local elementary schools in villages and middle schools in towns. Boys and girls have the equal rights in receiving education. On average, they can finish nine-year compulsory education;</p> <p>(7) The main local crops are rice, corns and rapes, vegetables and fruit trees are partially planted;</p> <p>(8) There is a severe water shortage in irrigation needed areas which is often caused by droughts. Now the irrigation generally depends on rainfall and water pumped from Xiaoqiao River. There is no guarantee in water using because of no project now. Hope Jinlong Reservoir Project can be constructed right now in order to solve water shortage problem. The current water tariff is 1.2-1.3 per cubic meter;</p> <p>(9) Now no disbursement regarding irrigation because lack of facilities. Generally the pumped irrigation is charged 5-8yuan/hour;</p> <p>(10) Both women and men can benefit from the completion of the project. The labor intensity can be alleviated after the irrigation condition is improved. Hope Jinlong Reservoir can be constructed soon;</p> <p>(11) Local men and women have the equal status, so both of them can benefit from the project due to the improvement of irrigation condition;</p> <p>(12) People who participated in the discussion think the project doesn't bring any disadvantage to the environment and land acquisition. No permanent farm land acquisition is required. Besides farmers can get compensation from bush land acquisition. The compensation will be shared by whoever owns the land, be it a personal or collective. The compensation to collectivity can be used to improve the local traffic though the discussion of the villagers;</p> <p>(13) After the improvement of irrigation condition, vegetables can be grown as an alternation rather than planting tomatoes only;</p> <p>(14) Training on planting and breed aquatics has once been provided by local government and departments concerned. Hope the government can construct the project immediately and improve the local traffic. More training on planting and breed aquatics is required;</p> <p>(15) Most of the local people can successfully get a small sum of loan if there is no money for production management. The amount of the loan is so limited that people is insufficient to meet the needs on scaled breed aquatics;</p> <p>(16) The beneficiaries would like to work in the course of project operation;</p> <p>(17) In the same condition, the local labors should have priority during the project construction in order to increase the income of local people;</p> <p>(18) In order to get involved into the management, beneficiaries may set up a water user association. The members are elected by masses; Water tariff is collected according to mu. Operation and management cost is covered in the water tariff;</p> <p>(19) It is suggested that the local traffic be improved and roads leading to reservoir be built. The project should be constructed as soon as possible and the reservoir can't be used for breed aquatics; In rainy seasons, some irrigation areas may be affected by flood, so flood control facilities should be considered;</p> <p>(20) Land acquisition can be settled by local arrangements. The project has little effect on the environment.</p>
<p>Female Group</p> <p>(1) Women do more housework;</p> <p>(2) Both men and women do the farm work. Men do most of the heavy jobs like harvest while women transplant rice seedling at this season. In general, men will do more work than women.</p> <p>(3) Men are the major bread winner in the family. Not many people went off into the cities for jobs in the past but more and more people these years, most of them are men.</p> <p>(4) Women manage the family income and it is common that women have much say in the family. Men and women have the equal say if the consumption is reasonable, such as daily supplies, foods, tobaccos and drinks, children's tuition.</p> <p>(5) The rate of divorce is low because people find their husbands or wives by their own will.</p> <p>(6) There are local elementary schools in village and middle schools in town. Boys and girls have the equal right in receiving education. On average, at least they can finish Junior middle school.</p>

- (7) At present, rice and rapeseed are main crops planted in the fields as well as a small amount of tomatoes. Only some common livestock and poultry are raised in family, such as cows, pigs, chicks, ducks and geese etc. No cash crops and sidelines are engaged.
- (8) The water shortage problem is quite severe in this region, so the farmers irrigate the farms by nature. There are pumps in village brought by their self-collected money, but they can be used on condition that there is rainwater in the canal, if not, the pumps will be useless.
- (9) The irrigation fee is 4-5yuan/hour (The fee of 2005 is 4.8yuan/hour). And in dry season no work can be done.
- (10) Women can save some time from fetching water and use their time and energy in farming and sideline activities after the project is carried out.
- (11) Women can get much benefit from the irrigation facilities operation after the project completion.
- (12) The project has little influence on environment and resettlement and generally there is almost no obvious negative influence to them. And the rational compensation will be given to the affected areas influenced by land acquisition.
- (13) Tomatoes can be planted there.
- (14) The farmers haven't received any training on other technologies and health except the one on tomato planting technology last year. Hope the government can provide some propaganda for health and reinforce spreading planting technologies.
- (15) Farmers have heard of small scale credit. ID cards and some repayment ability is required, otherwise a guarantor is needed. Both men and women have equal rights in applying for the loan.
- (16) The villagers have the working experience for the project. If they are needed in this project, they will also give a great help.
- (17) We think the one to be elected as the member of water user association must be capable, educated and prestigious, at least one representative in a team.
- (18) Hope the project can be constructed and play its role as soon as possible on settling down the water problem for common people.

Consulting opinion summary:

- (1) The housework and farm work is shared by both men and women, which women shoulder most of housework; Men do heavy jobs like farming while women are responsible for transplanting rice seedling. On the whole, men are the main work force on cultivation.
- (2) Men are the major bread winner in the family. More and more people go off into the cities to earn more, but generally women manage family income. It is common that women have much say in the family. Men and women have the equal say if the consumption is reasonable, such as daily supplies, foods, tobaccos and drinks, children's tuition. They consult each other when it is a big sum of consumption
- (3) The rate of divorce is low because people find their husbands or wives by their own will.
- (4) There are local elementary schools in village and middle schools in town. Boys and girls have the equal right in receiving education. On average, at least they can finish junior middle school.
- (5) At present, rice and rapes are main crops planted in the fields as well as a little amount of tomatoes. Only some common livestock and poultry are raised in family, such as cows, pigs, chicks, ducks and geese etc. No cash crops and sidelines are engaged.
- (6) The water shortage problem is quite severe in this region, so the farmers irrigate the farms by nature. There are pumps in village brought by their self-collected money, but they can be used on condition that there is rainwater in the canal, if not, the pumps will be useless. The irrigation fee is 4-5yuan/hour (The fee of 2005 is 4.8yuan/hour). And in dry season no work can be done.
- (7) Women can save some time from fetching water and use their time and energy in farming and sidelines development after the project is carried out. The villagers here master some growing technologies in planting tomatoes which are appropriate to be growing here.
- (8) The farmers haven't received any training on other technologies and health except the one on tomato planting technology in 2004 and 2005. Hope the government can provide some propaganda for health and reinforce spreading all kind of planting technologies.
- (9) The villagers are quite familiar with a small sum of loan. ID cards and some repay ability is required, otherwise a warrantor is needed. Both men and women have equal rights on applying for the loan.
- (10) The villagers had the working experience for the project before. If they are needed in this project, they will also give a great help.

- | |
|---|
| (11) Villagers think that at least one representative should be elected as the member of water user association. The elected must be capable, educated and prestigious. |
|---|

The 2nd Round of Public Consultation

Time	From 2: 30 to 4: 00pm on May 29 th , 2006
Venue	A villager's home in Xinzhai Village Longchang Town Xiuwen County
Representatives of Legal Units	Xiuwen Environment Protection Bureau, Xiuwen Women's Federation, Xiuwen Water Resource Bureau, Longchang Town Irrigation Station, Longchang Town Agricultural Service Center
Representatives of Village Teams	38 representatives, among which 16 females, 0 minority (with list attached behind).
PPTA	Miss Xu Yingxin, Mr. Luo Zheng, Miss Nie Danping
PMO	Kong Lingkun
Recorder	Miss Xu Yingxin
Record of the Conversation	
The 1st Group	
(1)	No words on the construction of the reservoir, only requiring in-time completion. The reservoir when being finished will exert great support to the development of our village and improvement to the irrigation. Lack of water results in production increasing staying uncertain, and most fertile land can only plant dry-land crops on account of water deficiency. At present, there's even shortage of drinking water supply, and some villagers spend two hours to carry water for one-day's use. Only if the reservoir can solve the problem of drinking and irrigation, we will take it a good project.
(2)	The reservoir will have advantage over the reserve of waters and soil.
(3)	The land use will be greatly supported only if the state policy is to be carried out. Concerning the Water User Association, it should be voted by each village. We will support reasonable charges and appropriate management of the Association.
(4)	Concerning the work force, recommend preference to local villager and farmers. Apply special consideration to the special part designing for the convenience of the villagers.
The 2nd Group	
(1)	The benefit will be sufficient when the reservoir is completed. Since long years, we farmers worried about the irrigation of the paddy field during the spring plowing seasons. Now the government spends great money to construct the Jinlong reservoir, which is the safeguard on water source. The paddy will get harvest, and we sincerely thank the government's supports and help.
(2)	We are willing to support work force and paid land, and look towards the early start of the reservoir construction so as to provide service for the villagers.
(3)	The villagers expect the water pricing can't be too high after the completion of the reservoir.
(4)	During the low water seasons, when the reservoir has no water, the villagers will not ask for irrigation service.
(5)	Attention to the protection of environment and reserve of waters and soil is required during the construction of reservoir.
(6)	The land use of the reservoir will be greatly supported by the village committee.
(7)	Under equal conditions, consider preference to local transportation in the course of construction.
(8)	Recommend digging a flood drainage ditch from Caibaichong to Hongjin, and an irrigation ditch from Caibaichong to Xijiawan.
Conclusion of the Conversation:	
Due to water shortage in this area, most fertile lands can't exert increasing production, and most fertile lands can't plant paddy and turn to dry land crops. Presently, there's difficulty in human and livestock drinking water supply, and some villagers spend two hours to carry water home for one day's drinking. The residence give great welcome to the reservoir construction, expecting the completion of which will solve the drinking water problem and improve the irrigation establishment. The use of land must comply with related state policy. Preference to local villagers and farmers during the construction of the reservoir under same conditions must be considered. The Water User Association is to be voted by each village, and reasonable charges and appropriate management	

will be greatly supported by local villagers.

The Interview with Agricultural Marketing Association

Time	From 4: 10 to 5: 35 pm on May 29 th , 2006
Venue	A villager's home in Xinzhai Village Longchang Town Xiuwen County
Association Member Participated	7 from the Later-tomato Planting and Marketing Association of Jianxin Village Longchang Town, 1 from Xiuwen Flower Association, and 1 from Early-hot-pear Association
PPTA	Miss Xu Yingxin, Mr. Luo Zheng, Miss Nie Danping
PMO	Kong Lingkun
Record of the Conversation	
Later-tomato Planting and Marketing Association of Jianxin Village Longchang Town	
<p>The establish time of the association: March 2003.</p> <p>The membership of the association: 373 by the end of 2005</p> <p>The composing of the association: later-tomato planters, and village brokers (all farmers).</p> <p>The selecting standard: choosing according to the constitution of the association. Main standard: voluntary later-tomato planting demonstrators and big planters.</p> <p>The obligation of the members: abide by the constitution of the association; plant the later-tomato according to the green planting technology; pay the membership fee punctually (which is to be paid in every May, one time per year).</p> <p>Membership fee: 1 Yuan/ family*month.</p> <p>Market development approach:</p> <p>Connecting through http://www.gznw.gov.cn/</p> <p>Establishing marketing records (strengthen contact with customers, with whom cooperated formerly).</p> <p>Develop the market through village brokers.</p> <p>Retail on individual and near markets.</p> <p>The running cost of the association: service mainly, taking membership fee as its running cost</p> <p>The spending aspects of the association: documents, organizing members visiting and studying out of the city, and regular meetings of the council.</p> <p>Government subsidy: special fund from Xiuwen Agricultural Bureau. Members of the association can get half-priced frame material, seeds and pesticide and free fertilizer from the Bureau.</p> <p>The profit and loss condition of the association: no wages for all the clerks including the chairman. When the membership fails to pay the running cost (the loss is usually 1000 to 2000 Yuan per year), the loss will be born by Longchang Town Agricultural Service Center, and the telephone charges are also on its part.</p> <p>The brokers' rights: 6 to 8 cents/Kg out of the sales.</p> <p>Technology provision: Longchang Town Agricultural Service Center.</p> <p>The biggest problem of the association:</p> <p>The planters get profit, but not so for the clerks.</p> <p>The running cost is insufficient.</p> <p>The prospect of the association:</p> <p>Firstly, sell under the name of the association during sales seasons, and every branch responsible for organizing the sales, developing the market united with the brokers, from which get expenditures for the association. It is expected that 4 cents/Kg will guarantee the normal running of the association.</p> <p>Output of the association: 19 000 Tons in 2005.</p> <p>Average retail price: 1 Yuan/Kg.</p> <p>Average cost: 0.32 to 0.4 Yuan/ Kg excluding land and fertilizer.</p> <p>The suggestions from the Water User Association:</p> <p>Its members and membership fees are stable, which is differed from our association.</p> <p>The choosing of the council is important. The government may give instructions, but the association should be managed by its own members.</p> <p>Give attention to the constitution establishment, and strict management should be carried out.</p>	
1 from Early-hot-pear Association	

<ol style="list-style-type: none"> (1) Establishing time: December 2005. Choosing 900 mu lands that seriously effected by the geology, on which planted fruit seedlings provided by the government along with technology and work force (for digging holes), enjoying the state policy of returning-land-for-farming-to-forestry. (2) The association members: voluntary participation; public, equal, and fair voting; systematic management principal. 380 members at present with 1 chairman (of senior high school education), 7 council members (among which 4 of senior high school education, 3 junior high school), 1 full-time secretary-general and 1 cashier. No marketing personnel now in the association, planning voting from the council. (3) Membership fee: 10 Yuan/family per year. (4) The expenditures of the association: 1. Inviting the specialists from the Provincial Agricultural Science Academy for the technology training of plant disease control, pruning and trimming, fertilizing and irrigation, and training part of the members to become the backbone of the association, 2. Typing and copying of the documents, 3. The market development. Remark: the telephone charges are for each one. (5) The fruit tree kinds: 1. Pear tree: early sweet pear introduced from Sichuan Province, Cuiguan No. 7 introduced from Chongqing, and "Emerald" from Sichuan, 2. Apple tree: all introduced from Shandong Province. All the above fruit trees get matured before August. (6) Suggestions to the Water User Association: 1. One member elected from each village, 2. Sufficient running cost, 3. Full disclosure to all the members, and accepts public supervision, 4. The association must be composed by village cadres for the convenience of communication.
<p>Xiuwen Flower Association</p>
<ol style="list-style-type: none"> (1) Establishing time: Feb. 2005 (2) Membership: over 100 (3) Membership fee: 5 Yuan/person per year (4) The main duty of the association: protection and development of orchid; the publicizing and reasonable use of the orchid resources in Guizhou Province; the provision of sales information; training of planting, appreciation, identification, and investigation personnel. (5) Voluntary participation, must of certain technology and abiding by the constitution of the association. 10 council members by voting (of above secondary school education, and undergraduates). (6) Support from the government: office place provided by the County Forestry Bureau and 5 000 Yuan starting outlay subsidy; 5 000 Yuan support from other government departments at the beginning; 5 000 Yuan support from personnel besides membership fees, totaling about 15 000 Yuan of support besides membership fees. (7) Running situation of the outlay: insufficient since one year ago (8) Expenditure of the association: 1. Meeting cost: member training, communication, and technology promoting, etc., 2. Subscription of magazines, 3. Exhibition of orchid, 4. Participation of state orchid exhibition. (9) Present difficulties: low membership fees results in running difficulty (10) Suggestions to the Water User Association: 1. Check the Water-use Contract by the Water Management Station and the water user, and outlet according to the plan, 2. The ditch maintenance, charge of water, coordination of water dissension and the arrangement of drainage order done by the user themselves, 3. Firstly selected by each villager to form the water-use team, and afterwards select 1 or 2 persons from the teams entering into the Water User Association from which select the chairman and council members, 4. Financing independently, publicly, and accepting public supervision.
<p>Conclusion of the conversation:</p> <p>The three associations absorb their members on the basis of voluntary and dedicatory principle, decide their chairmen and councils publicly on the members' meeting, and take council as the main management team. Low membership fee paid by the members is used for the running cost, besides, certain subsidies from the government helps to pay the cost. But insufficiency of running cost and fund exists in each association. Suggest paying attention to the guaranty of running cost, financial disclosure, personnel electing and systemizing of administration of the Water User Association when it is established.</p>