
IV. COUNTRY CONSULTATION PROCESS

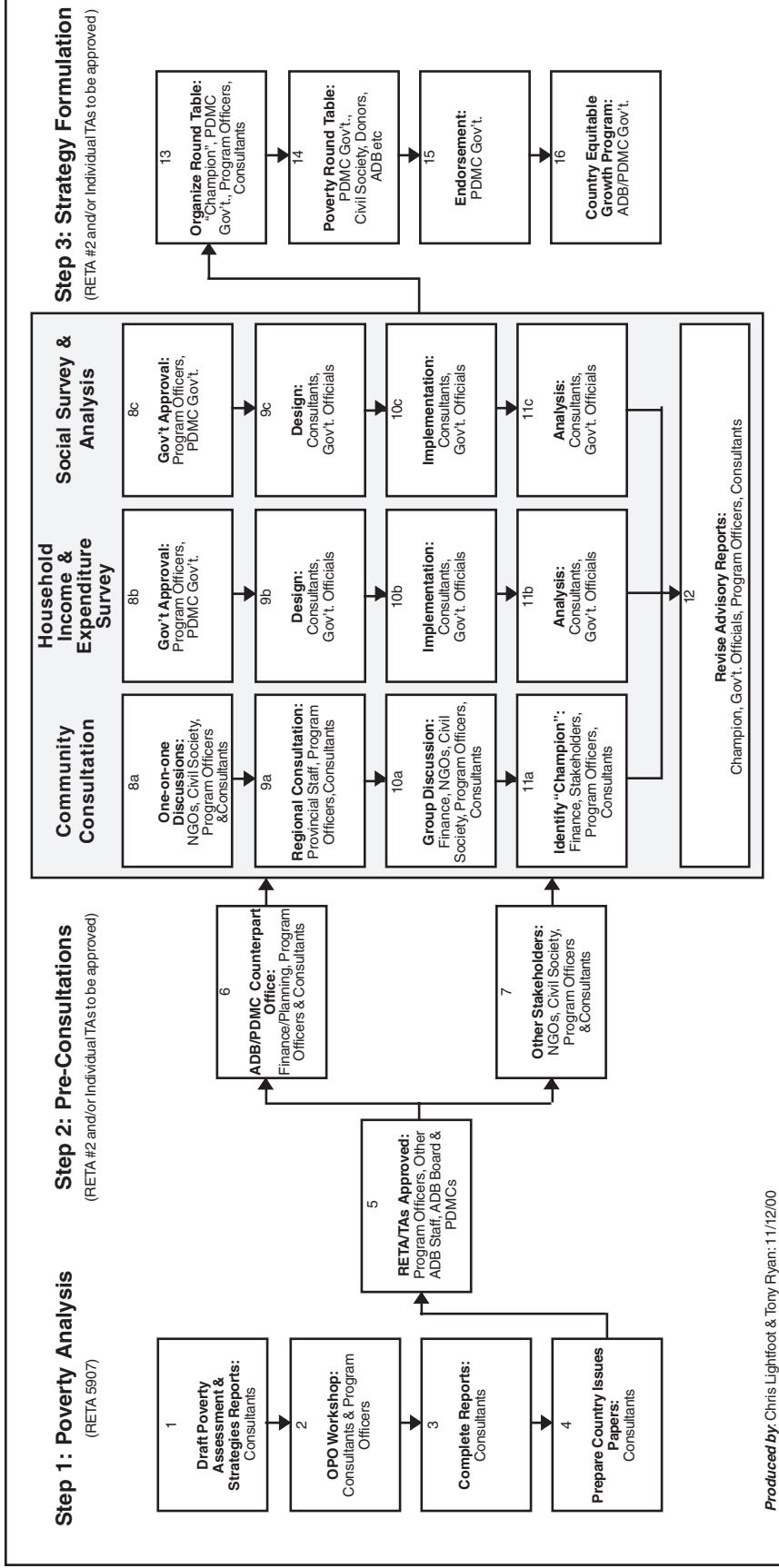
This document has been prepared to assist the ADB's staff in developing a cooperative approach to poverty reduction with the Bank's PDMCs. It is important that the process used to develop the cooperative approach is inclusive and comprehensive. The flow chart in Figure 5 sets out an approach that will ensure that the process is inclusive and comprehensive.

Step 1: Poverty Analysis. Step 1 encompasses the output of RETA 5907. It includes the preparation of poverty assessment and strategy reports and the internal ADB consultation process. The final output will be a set of discussion papers to be used by the desk officers in their consultations with the PDMC Governments. This process will be finished by early March 2001.

Step 2: Pre-Consultations. This phase starts with the ADB approval process for the further RETA/TAs required to take the discussion process to the PDMCs. It comprises three components: (i) Community Consultation, (ii) Household Income and Expenditure Survey, and (iii) Social Survey and Analysis.

- *Community Consultation:* This component includes the desk officers' consultation with the individual PDMC Governments, NGO's and other stakeholders. As envisaged, this process would start out with one-on-one discussions with Government officials, NGOs, and civil society. Where appropriate, these discussions would extend to include provincial/regional government officials and civil society. On completion of the one-on-one consultations, informal group discussions would be held with selected Government officials, NGOs, etc. for the purpose of identifying a Champion who would carry the process forward.
- *Household Income and Expenditure Survey:* This component is likely to be quite time consuming; but in the absence of a detailed HI&E survey, it will be difficult to satisfactorily target the poverty strategies. The process outlined in the flow chart includes approval, design, implementation, and analysis.
- *Social Survey and Analysis:* In all likelihood, the social survey could be carried out in conjunction with the HI&E survey, albeit with a different structure and method. The results of the pre-consultation phase would need to be drawn together to prepare advisory reports for use in the final, Strategy Formulation, phase.

Step 3: Strategy Formulation. It is important that the final strategies are owned by all concerned parties: the government, NGOs, civil society and the ADB. This will best be achieved through a broad consultation process. As outlined in the flow chart, this step would involve a Poverty Round Table. This could be in the form of an open forum or a broadly based meeting with selected invitees. For the process to be effective, it is important that Government and the ADB endorse the end result.



Produced by: Chris Lightfoot & Tony Ryan: 11/12/00

Figure 5: Consultation Process