

## **6 IMPACT ZONES**

### **6.1 Introduction**

For clarity the relevant study areas of the CIA have been combined into five “impact zones” (see Map 7). The intention is to avoid too much repetition and overlap in conclusions. It is necessary to be flexible and realistic in determining the level of detailed assessment and geographic focus and at the same time cover all the important issues. For some development trends and impacts, the administrative units (provinces and districts) will be the most relevant units for which to assess the cumulative impacts. In other cases the river and the catchment is a more important reference area. These two zoning principles have been combined to make suitable analytic and presentation units.

Broadly speaking it can be said that two zones cover most of the project area impacts, two zones cover what can be classified as downstream or impacts on the province level and one zone primarily cover international issues and impacts.

### **6.2 Nakai Plateau**

This area covers the Nakai plateau to the west of the planned reservoir. It includes the resettlement areas, and land that will be more heavily utilised under the new land use regime.

This zone is the one covered most in detail in the project specific EIAs, Management Plans and Development Plans, initiated by the developer or funding organisations. The CIA is not supposed to repeat these analyses, but rather supplement the existing assessments with the cumulative and long-term perspective.

### **6.3 Nakai Nam Theun NBCA**

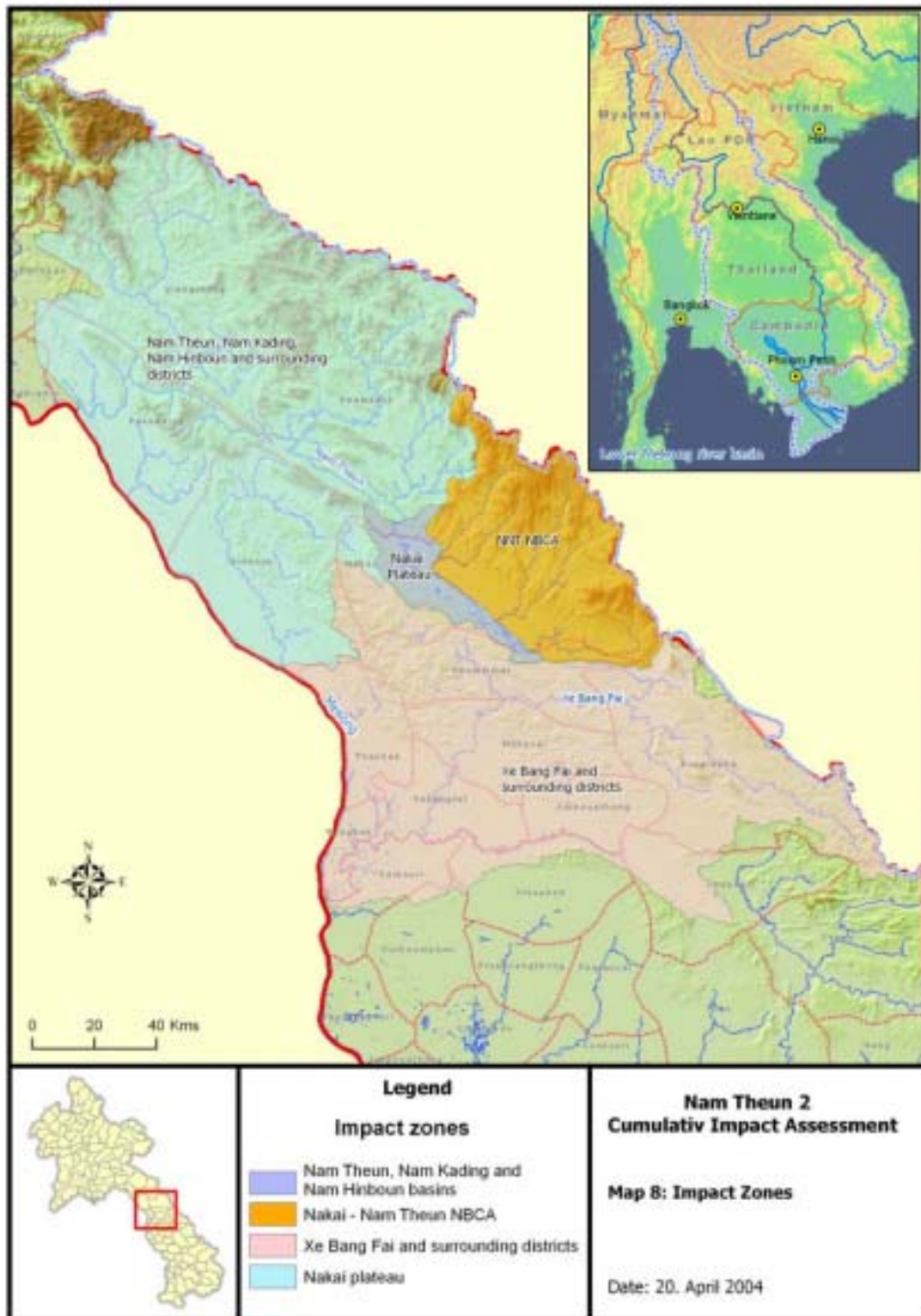
This also covers the Nakai-Nam Theun Biodiversity Conservation Area. Impacts on the NBCA and the ethnic minorities living in that area together with those on the Vietnam side will also be commented upon.

### **6.4 Xe Bangfai Basin and Surrounding Districts**

This zone will cover the lower part of Xe Bangfai River and the water use related activities along its reaches in Khammouane and Savannakhet. The areas in and around Thakhek, Mahaxai, the villages close to the NT2 Project sites and other areas in Khammouane and Savannakhet that might be influenced by the project will be covered under this heading.

### **6.5 Nam Theun, Nam Kading and Nam Hinboun Basins and Surrounding Districts**

This zone will cover the rivers and adjacent lands of Nam Theun from the planned Nakai damsite to the reservoir of Theun-Hinboun and the Nam Kading and Nam Hai/Hinboun from Theun-Hinboun down to their confluences with the Mekong. Potential impacts on the planned conservation corridor will be discussed here. In this section will also be discussed impacts on the relevant districts of Bolikhamxay.



## **6.6 The Mekong Basin**

This section will cover all aspects related to, or dependent on, the hydrology and water use of the mainstream Mekong, from the Nam Kading discharge to the Mekong Delta in Vietnam (including the arm/tributary of Great Lake).

There are, however, some impacts that might be observed outside the Mekong Basin (i.e. districts east of the Lao PDR - Vietnam border) and there are impacts that are not primarily river related. Such impacts will also be discussed under this heading.