



Technical Assistance Report

Project Number: 39092
March 2007

Transboundary Animal Disease Control for Poverty Reduction in the Greater Mekong Subregion (Cofinanced by the Government of the People's Republic of China)

Asian Development Bank

ABBREVIATIONS

ADB	-	Asian Development Bank
ASEAN	-	Association of Southeast Asian Nations
CSF	-	classical swine fever (also known as hog cholera)
FAO	-	Food and Agriculture Organization
FMD	-	foot-and-mouth disease
GMS	-	Greater Mekong Subregion
JICA	-	Japan International Cooperation Agency
Lao PDR	-	Lao People's Democratic Republic
NGO	-	non government organization
NPC	-	national project coordinators
OIE	-	World Organization for Animal Health
PMU	-	project management unit
PRC	-	People's Republic of China
PSC	-	project steering committee
RAP	-	Regional Office for Asia and the Pacific
SARS	-	severe acute respiratory syndrome
TA	-	technical assistance
TAD	-	transboundary animal diseases

TECHNICAL ASSISTANCE CLASSIFICATION

Targeting Classification	-	Targeted intervention (geographic poverty)
Sector	-	Agriculture and natural resources
Subsector	-	Livestock
Themes	-	Regional cooperation, capacity development
Subthemes	-	Institutional development, organizational development

NOTE

In this report, "\$" refers to US dollars.

Vice President	-	C. Lawrence Greenwood, Jr., Operations Group 2
Director General	-	A. Thapan, Southeast Asia Department (SERD)
Director	-	U. S. Malik, Agriculture, Environment, and Natural Resources Division, SERD
Team leader	-	M. Mitra, Senior Social Development Specialist, SERD

I. INTRODUCTION

1. The socioeconomic crises caused by the recent outbreaks of SARS (2003) and avian influenza (2004) in Asia, have served to heighten the awareness of the wide-ranging negative impacts of infectious diseases on human health, food safety, livestock trade, and livelihoods of poor farming communities. In addition to these outbreaks, continuing losses of livestock belonging mainly to smallholders in the Greater Mekong Subregion (GMS), due to other transboundary animal diseases (TAD), such as foot and mouth disease (FMD), and classical swine fever (CSF), have clearly revealed major weaknesses in the public health and veterinary services. In response to these problems, the Asian Development Bank (ADB) and the Food and Agriculture Organization (FAO) have developed a regional technical assistance project,¹ which aims at addressing the fundamental constraints to effective responses to TAD in the region.

2. The project was conceived to be carried out in two phases of 2 years each. The first phase was implemented in 2005, and is expected to be under implementation until June 2007. The primary objectives of phase I include the establishment of a strong regional cooperation mechanism, and initiating the development of national and regional capacities to control TAD. In phase II of the project, the expected outputs include improved knowledge of patterns of livestock trade and movements in the GMS, stronger national and regional diagnostic capacity to deal with TADs, and the development of well targeted pilot disease control programs. It is expected that these pilot programs can demonstrate the positive impacts of TAD control, on livelihoods of poor farming communities, and on regional livestock trade in the GMS.

3. The current phase of the project has achieved a number of key outputs. These include among others, the formal endorsement of a regional collaborative agreement entered into by the Ministers of the GMS countries, by the Second GMS Leaders Summit held in July 2005 in Kunming, People's Republic of China (PRC). This aims to control TAD through regional cooperation, transparency in disease reporting and mutual support in harmonizing policies and approaches to TAD control. Under the current phase, the project training programs on disease surveillance and diagnosis are being undertaken, in order to enhance national and regional disease control capacity. On completion of phase I, it is expected that a significant amount of the groundwork, would have been completed, which is essential in order to embark on targeted disease control programs among poor livestock farming communities, in the Upper and Lower Mekong Regions of the GMS.

4. This TA² reflects the phase II of the project, and is submitted to seek grant funds to support a number of follow up activities related to disease control programs to be launched in phase II³ (Appendix 1).

II. ISSUES

5. Livestock represent only 15% of the agricultural gross domestic product in Southeast Asia, but are a strategic part of the small-farm economy in the region. The demand for livestock

¹ ADB 2004. *Technical Assistance to Cambodia, People's Republic of China, Lao People's Democratic Republic, and Viet Nam, for Transboundary Animal Disease Control in the Greater Mekong Subregion (GMS)*. Manila (TA 6192-REG).

² The TA was approved for cofinancing by the Government of People's Republic of China (PRC), and ADB Technical Assistance Special Funds (TASF). The TA was proposed to the meeting of the Regional Community of Practice on 3 November 2006. The Government of the PRC approved it in November 2006.

³ The TA is included in the GMS Regional Cooperation Strategy and Program Update (RCSPU) 2006–2008.

products in the region is projected to grow by 3.5%–4.0% annually⁴ to the year 2020. This increase—predominantly driven by high-income growth, rapid urbanization, and changes in dietary patterns—will present clear opportunities for reducing poverty among poor smallholders. This will be achieved by improving their incomes, through commercialization of smallholder livestock production. However, in order to fully participate in these market opportunities, poor smallholders in GMS countries will have to produce healthy and productive animals. Unfortunately, they are currently constrained by diseases such as FMD, CSF and avian influenza. The morbidity and mortality rates of livestock due to these diseases are often as high as 50%–70% in many parts of the GMS.⁵

6. The poor in the developing world face particularly high risk from livestock diseases. Participatory poverty assessment surveys in Lao People’s Democratic Republic (Lao PDR) have shown that 70% of producers rank animal diseases as a major constraint to their household incomes.⁶ Phase I of the present TA has made progress in bringing about greater recognition of the significance of TADs for poverty reduction, increased regional trade, related food safety and human health concerns. It has demonstrated the need for regional cooperation in prevention and control of TADs. Livelihood surveys have been done in disease control areas in the Upper and Lower Mekong region, in order to establish the baseline, for future monitoring of the impacts of controlling TADs, on the poor. Controlling such diseases is a strong incentive for regional cooperation, and underscores the need for this project.⁷

7. Animal movement and the informal livestock trade, within and between various countries in the region, are the major means of transmitting and spreading TAD. Cross-border trade in livestock among GMS countries is dynamic and rapidly evolving, mainly driven by price gradients across the subregion. While cattle and buffalo movements in 2003 and 2004 were mainly from Cambodia, Lao People’s Democratic Republic (Lao PDR), Myanmar, southern PRC, and Viet Nam into Thailand, this has significantly changed in the last two years. There is now substantial illegal or informal trade in cattle and buffalo from Cambodia, Lao PDR, and Myanmar sometimes via the PRC) into Viet Nam and Thailand. Such informal trade is one of the primary reasons for the spread of TAD. The lack of understanding of the risks of TAD, and fears among smallholders and traders, of excessive charges and restrictions, limit formal opportunities for regulating inter-regional trade in livestock and livestock products. It is necessary to understand the patterns of livestock movements in the sub region, and identify the key points for TAD control, which is an aim of the proposed project.

8. In order to address the complex issues related to the spread and control of TAD, ADB and FAO have already developed a 4 year, two-phased, sequential approach to contain TAD. Phase I⁸ of 2 years is currently operational focusing on (i) developing and operationalizing strong regional cooperation, and (ii) developing a harmonized disease information system in the region, and increasing surveillance and diagnostic capacity. Since the inception of phase I in mid July 2005, the project has made significant progress in achieving key objectives.⁹ In phase II, the key objective would be to apply the optimal disease control programs in the Upper and Lower Mekong disease control zones, in order to demonstrate tangible impacts on incomes of

⁴ Delgado, C. et al.1999. *Livestock to 2020: The Next Food Revolution*. Washington, DC. IFPRI /FAO/ILRI.

⁵ ADB. 2002. *Review of the Livestock Sector in the Lao People’s Democratic Republic*. Manila.

⁶ ADB. 2001. *Participatory Poverty Assessment: Lao People’s Democratic Republic*. Manila.

⁷ The TA first appeared in *ADB Business Opportunities* on 4 December 2003. The second phase appeared in *ADB Business Opportunities* on 16 October 2006.

⁸ For details of accomplishments under RETA 6192, refer to Appendix 4.

⁹ Refer to Appendix 4 on progress achieved under phase I of the regional TA project.

poor livestock holders, by significantly containing animal morbidity and mortality rates.¹⁰ Linked to this key objective are a number of follow-up activities, such as the development of a better understanding of the role of animal movements and markets in disease transmission, and setting up appropriate laboratory facilities to monitor disease control programs. The TA submitted here is targeted specifically to address these follow-up activities.

9. This project is consistent with the goals set out by Greater Mekong Subregion Economic Cooperation Program that aim to (i) increase regional cooperation among its members, (ii) boost trade, and (iii) initiate interventions that reduce poverty through mutual learning and sharing of information and technology. The activities of this project are consistent with ADB's country-specific operations.¹¹

III. THE TECHNICAL ASSISTANCE

A. Impact and Outcome

10. The impacts generated from this project are expected to contribute to the larger goal of reducing poverty in poor livestock farming communities in the GMS, through better control of TAD, increased production of safer food, and enhanced opportunities for smallholders to access higher value markets, in order to sell their livestock and livestock products. The specific outcomes from the project will include defined and well targeted disease control approaches, and improved diagnostic capacity of the national and regional laboratories, to process a large number of field samples from diseased animals in the region, and provide rapid diagnosis for better control of TAD. This improved capacity will also facilitate better flow of information on diseases within a country, and between the GMS countries, for better disease control planning. (The design and monitoring framework is in Appendix 1.)

B. Methodology and Key Activities

11. The project will be implemented over a 2-year period between 2007 and 2009, and will run concurrently with other phase II activities of the proposed RETA on Reducing Risk of Transboundary Animal Disease for Poverty Reduction in the GMS, which are expected to be launched through a separate funding source in mid 2007.¹² This TA will consist of the following components:

12. Component 1. Participatory Research on Patterns of Livestock Trade and Disease Control in the GMS. Under this component, research will be undertaken to identify the directions and volumes of informal livestock trade, and the key players involved in the trade. This will help to (i) identify optimal ways to introduce TAD awareness programs; and (ii) improve regulation of livestock trade with a view to controlling TAD, through better enforcement of health checks on livestock, and access to improved information and databases. A regional research institute or an NGO, with a strong background in livestock and poverty research and interventions, will be selected by ADB to carry out the research and analyze data, and prepare outputs. The research methodology will include surveys and participatory research. Site visits, interviews with key informants, focus group discussions with farmers, traders, officials,

¹⁰ Another proposal is being prepared to secure funding from the Japan Fund for Poverty Reduction for support in disease control in the GMS.

¹¹ For instance, a livestock development project for the Lao PDR is in the pipeline for 2004, and the loan itself for 2006. This project will also be complementary to a number of ongoing rural and agricultural development projects that have livestock components funded by ADB and other partners, in Cambodia, Lao PDR, and Viet Nam.

¹² These other activities will include targeted pilot TAD control programs among smallholder farming communities.

extension workers, veterinary staff at different levels, will be conducted. Key outputs will include (i) in depth analysis of the animal movement patterns within and between the GMS countries, particularly in the Upper and Lower Mekong disease control zones;¹³ (ii) definition of strategic points along the livestock production chain (farm to markets) for disease control interventions; and (iii) a set of recommendations on policy and technical interventions to enhance TAD control in the region.

13. **Component 2: Equipping National and Regional Laboratories for TAD Control.** This component will identify the essential gaps in diagnostic equipment and human resources, for each of the three national diagnostic laboratories of Cambodia, Lao PDR, and Viet Nam, and the FMD regional diagnostic laboratory based in Pak Chong, Thailand. It will equip these national and regional laboratories to support sero-diagnosis of FMD and CSF. Equipment to be purchased will include DNA genotyping machines, Elisa readers, centrifuges, biosafety hoods, water purification systems, and computer hardware at local levels. After TA completion, all equipment will remain laboratory property for TAD control. Laboratory specific training will be provided in each of the target countries. The methodology and protocols for diagnosis in the GMS countries will be harmonized.

C. Cost and Financing

14. The total cost of the project is estimated at \$500,000 equivalent. Of this amount, \$300,000 equivalent will be financed on a grant basis by the Poverty Reduction and Regional Cooperation Fund, funded by the Government of the PRC, and \$150,000 equivalent will be financed on a grant basis by ADB's TA Funding Program. Governments from GMS countries will make in kind contribution equivalent to \$50,000 to cover expenses for office accommodation, counterpart staff, part of the costs of training, seminar, and conferences, part of domestic travel, part of survey and data gathering, and translation. The TA will be administered by ADB. The detailed cost estimates and proposed financing plan are in Appendix 2.

D. Implementation Arrangements

15. The TA activities will be conducted over 24 months, from July 2007 to May 2009. ADB will be the executing agency. The ministries of agriculture in the GMS countries will be the implementing agencies, through their respective departments of livestock. Project implementation at the country level will be the responsibility of national project coordinators, who are already identified in each of the participating countries by their respective governments. FAO will be selected by ADB through single source selection, to implement the project and deliver the required services.¹⁴ FAO has the necessary expertise at global, regional, and national levels, to provide technical and operational services to the project. In addition to FAO, ADB will recruit all consultants in accordance with its *Guidelines on the Use of Consultants*. The international and national consultants will be based in the FAO office in Bangkok. All material and equipment procurement will be conducted in compliance with ADB's *Procurement Guidelines* (2006, as amended from time to time).¹⁵

¹³ The Upper and Lower Mekong disease control zones have been designated as such by the OIE and have been approved by the GMS countries. These zones include selected provinces in all the GMS countries.

¹⁴ As described in the ADB-FAO. 1981. Memorandum of Understanding.

¹⁵ Equipment to be procured will include laboratory equipment such as DNA genotyping machines, Elisa Readers, centrifuges, bio safety hoods, water purification systems, and computer hardware for TADs information systems at provincial and district levels. After completion of the TA, the equipment will remain as property of the laboratories for continued TAD prevention and control programs.

16. The project steering committee comprising one expert representing each of the departments of livestock from the 5 GMS participating countries, ADB, FAO, OIE, and Association for Southeast Asian Nations, will provide overall guidance and oversight and implementation guidelines to the project. A project management office headed by a project coordinator/chief technical adviser (PC/CTA), will be located in FAO's Regional Office for Asia and the Pacific (FAO-RAP), in Bangkok, to coordinate project activities. Project management units headed by national project coordinators in the DMCs, which have been set up during phase I of the project, will continue to coordinate and implement project activities. The project implementation arrangements and organogram is in Appendix 3. The TA will finance 2 person-months of international expertise (PC/CTA) and 2 person-months of national consultancy (communications specialist).¹⁶ The international and national consultants will be selected through single source selection, due to reasons of continuity with the ongoing phase I activities. ADB will use the quality-based selection method to recruit the consultants for the follow up surveys through a firm. National consultants will be used. Simplified technical proposal will be required. Outline terms of reference for the consultants are in Appendix 4.

17. FAO will disseminate the expected outputs through the project website, regular newsletters, quarterly and annual reports, consultant reports, reviews and terminal reports. Public awareness campaigns in all the identified regions will be set up to ensure sensitization of the target farmers in villages and communes.

IV. THE PRESIDENT'S DECISION

18. The President, acting under the authority delegated by the Board, has approved (i) ADB administering a portion of technical assistance not exceeding the equivalent of \$300,000 to be financed on a grant basis by the Government of the People's Republic of China, and (ii) ADB providing the balance not exceeding the equivalent of \$150,000 on a grant basis, for Transboundary Animal Disease Control for Poverty Reduction in the Greater Mekong Subregion, and hereby reports this action to the Board.

¹⁶ In addition to these person-months of consulting services, further consultant support will be needed for the project. It is expected that ADB will be able to bring on board more consulting services through other funding sources. These are being worked out at present.

DESIGN AND MONITORING FRAMEWORK

Design Summary	Performance Targets/Indicators	Data Sources/Reporting Mechanisms	Assumptions and Risks
<p>Impact</p> <p>Poverty reduction in poor livestock farming communities in the GMS through better control of TAD, food safety improvements, enhanced opportunities for smallholders to access higher value markets.</p>	<p>Reduced livestock disease incidence in poor livestock farming communities</p> <p>Increased farm incomes in the target disease control zones</p>	<p>National livestock policy documents.</p> <p>OIE and FAO reports of diseases in the GMS countries.</p> <p>Livelihood research reports.</p> <p>Ex-post impact assessment of disease control programs.</p>	<p>Assumptions</p> <ul style="list-style-type: none"> • More advanced GMS countries assist the less advanced • GMS cooperation remains strong • National governments commitment is high for TAD control.
<p>Outcome</p> <p>1. Targeted disease control approaches defined.</p> <p>2. Capacity to provide diagnostic support to national and regional disease control programs strengthened.</p>	<p>National governments adopt recommended technical and policy recommendations on TAD control.</p> <p>Regional cooperation is being undertaken regularly, through the exchange of disease control information in the GMS countries which started in 2005.</p> <p>One regional and three national laboratories have the appropriate equipment and are functioning and operated by trained national technical staff by end of 2007.</p> <p>All the three national laboratories are performing routine diagnostics against FMD and CSF, and are providing backstopping support to sero-surveillance program.</p> <p>The three FMD and CSF</p>	<p>Project quarterly reports and newsletters</p> <p>Stakeholder and participant feedback</p> <p>PSC reports</p> <p>Project website and regional TAD<i>Info</i> system</p> <p>ADB's project review report</p> <p>PSC reports</p>	<p>Assumptions</p> <ul style="list-style-type: none"> • Regional cooperation framework adopted by GMS countries in 2005 is still operational. • The required information is provided by traders, and the government officials. • Appropriate consultants are recruited on time. • Governments continue to support national and regional labs. • Access to national labs, and appropriate candidates for training are available.

Design Summary	Performance Targets/Indicators	Data Sources/Reporting Mechanisms	Assumptions and Risks
	designated regional labs are providing diagnostic support to national TAD control programs.		
<p>Outputs</p> <p>1. Participatory Research on Patterns of Livestock Trade and Disease Control in the GMS. Key outputs will include:</p> <ul style="list-style-type: none"> • indepth analysis of the animal movement patterns within and between the GMS countries; • research to identify critical points along livestock production and marketing, for targeted TAD control programs; and • policy and technical recommendations based on research results <p>2. Equipping one regional and three national labs in Cambodia, Viet Nam and Lao PDR with improved physical and human resources for FMD and CSF diagnosis. Key outputs will include:</p> <ul style="list-style-type: none"> • equipment purchase for laboratories including genotyping machines, Elisa readers, water purification equipment etc.; and • laboratory staff 	<p>Research institute engaged by August 2007 Research design finalized by October 2007</p> <p>Research teams operationalised by October 2007</p> <p>Field work completed by February 2008</p> <p>Data analysis and report writing completed by April 2008</p> <p>Final report submitted to ADB by April 30, 2008</p> <p>PSC to discuss research report and recommendation to be adopted by participating countries, June 2008</p> <p>Based on early research results, targeted disease control programs to start by late 2007</p> <p>Equipment purchase to be completed by December 2007</p> <p>At least 30 laboratory staff to be trained in equipment utilization and diagnosis of CSF and FMD by October 2007.</p> <p>At least 30 laboratory staff trained in CSF and</p>	<p>Project quarterly reports and newsletters</p> <p>Stakeholder and participant feedback</p> <p>Research reports PSC reports</p> <p>Project web site and regional TAD/Info system</p> <p>ADB's project review report</p> <p>PSC reports ADB review mission reports</p>	<p>Assumptions</p> <ul style="list-style-type: none"> • Regional cooperation framework adopted by GMS countries in 2005 is still operational. • The required information is provided by traders, and the government officials. • Appropriate consultants are recruited on time. • Governments continue to support national and regional labs. • Governments provide laboratory space and technical staff on time.

Design Summary	Performance Targets/Indicators	Data Sources/Reporting Mechanisms	Assumptions and Risks
trained in diagnosis and use of equipment.	FMD diagnosis by December 2007		
Activities with Milestones 1. Participatory research on patterns of livestock trade and disease control in the GMS 1.1. Map out routes of animal movement in the GMS through national and regional consultations 1.2. Determine numbers of animals migrating within the region 1.3. Determine the key drivers of animal movement within the GMS 1.4. Identify the major traders of livestock and livestock products in the region. 1.5. Identify and define different livestock markets and slaughter houses in the 5 GMS countries 1.6. Establish the volume of trade in these markets and slaughter houses. 1.7. Perform sero-prevalence of TAD along the migratory routes, markets and slaughter houses 1.8. Define livestock production chain in each country focusing on smallholder sector 1.9. Identify critical points for strategic interventions 2. Enhancement of national and regional lab capacity to perform diagnosis of FMD and CSF 2.1. Identify essential gaps in diagnostic equipment for each national and regional lab 2.2. Order the requisite equipment and organize installation in these labs. 2.3. Provide lab specific training in each of the four target countries (Cambodia, Lao PDR, Thailand, and Viet Nam) 2.4. Harmonize methodologies and protocols for diagnosis in the GMS countries.			Inputs <ul style="list-style-type: none"> • ADB: \$150,000 • People's Republic of China: \$300,000 • Governments: \$50,000

ADB = Asian Development Bank, CSF = classical swine fever, FAO = Food and Agriculture Organization, FMD = foot and mouth disease, GMS = Greater Mekong Subregion, OIE = World Organization for Animal Health, Lab = laboratory, Lao PDR = Lao People's Democratic Republic, PSC = project steering committee, TAD = transboundary animal diseases

COST ESTIMATES AND FINANCING PLAN
(\$'000)

Item	Total Cost
A. Asian Development Bank (ADB) Financing^a	
1. Consultants	
a. Remuneration and Per Diem	
i. International Consultants	12.40
ii. National Consultants	2.00
b. International and Local Travel	4.00
c. Reports and Communications	2.00
2. Equipment	72.80
3. Training, Seminars, and Meetings	
a. Facilitators	8.00
b. Training Program	4.00
4. Surveys	10.00
5. Miscellaneous Administration and Support Costs	2.40
6. Project Service Cost	16.40
7. Contingencies	16.00
Subtotal (A)	150.00
B. Government of the People's Republic of China Financing^b	
1. Consultants	
a. Remuneration and Per Diem	
i. International Consultants	18.60
ii. National Consultants	3.00
b. International and Local Travel	6.00
c. Reports and Communications	3.00
2. Equipment	127.20
3. Training, Seminars, and Meetings	
a. Facilitators	12.00
b. Training Program	6.00
4. Surveys	72.00
5. Miscellaneous Administration and Support Costs	3.60
6. Project Service Cost	24.60
7. Contingencies	24.00
Subtotal (B)	300.00
C. Government Financing	
1. Remuneration and Per Diem of Counterpart Staff	25.00
2. Domestic Travel	5.00
3. Reports and Communications	5.00
4. Training, Seminars, and Conferences	5.00
5. Surveys	5.00
6. Miscellaneous Administration and Support Costs	5.00
Subtotal (C)	50.00
Total	500.00

^a Financed by ADB's technical assistance funding program.

^b Administered by ADB.

Source: ADB estimates.

IMPLEMENTATION ARRANGEMENTS

1. The Food and Agriculture Organization (FAO) will continue to host the project management office (PMO) which was set up under phase I of the technical assistance (TA), at its Regional Office for Asia and the Pacific in Bangkok to implement project activities.¹ All activities will be conducted according to the guidelines of the global framework for the control of transboundary animal disease (TAD)—a joint FAO/Office International des Epizooties (OIE) initiative on global control of TAD. FAO will (i) ensure transparency and accountability, (ii) facilitate administrative procedures, and (iii) provide legal assistance where necessary. The ministries of agriculture in the participating countries will be the implementing agencies through their departments of livestock. For country level project implementation, project management units (PMUs) established during phase I of the TA, will continue to discharge their functions under the continuing guidance of the national project coordinators appointed by their respective governments. A formal consortium of partners including FAO, International Livestock research Institute (ILRI), Japan International Cooperation Agency (JICA), OIE, Veterinarians Sans Frontière (VSF), a nongovernment organization (NGO), and the private sector has been formed under phase I of the TA, to provide technical inputs. This will be continued under the project. The PMO will focus on integration and coordination of project activities, and prepare project reports, annual work plans, and budgets, in consultation with the PMUs. The PMO will continue to be headed by a full time project coordinator/chief technical adviser (PC/CTA) who will (i) provide leadership to the project and day to day management, (ii) liaise with participating countries, and (iii) ensure that project funds are used in accordance with approved work plan and budget. The outline terms of reference are in Appendix 4.

2. A project steering committee (PSC) composed of one expert representing each of the five countries, FAO, OIE, JICA, Association of Southeast Asian Nations Sectoral Working Group on Livestock (ASWGL), and ADB, established during phase I of the project, will continue to provide: (i) overall strategic and policy directions, (ii) guidance and oversight, and (iii) implementation guidelines to the project and PMO. Given the significant policy implications of the project, the chair of ASWGL will also continue to be appointed to the PSC. Other representatives will be appointed by member organizations and participating countries. The PSC will approve annual work plans, budget, quarterly and annual progress reports prepared by the PC/CTA. The PSC will meet twice a year in the region to review and monitor project progress and approve requisite plans and budgets. The PC/CTA will prepare and distribute the agenda two weeks prior to the PSC meeting. The cost of PSC meetings will be paid under the project.

3. The project will continue as under the phase I to solicit community, VSF, and private sector participation on conceptualization, design, and implementation of its activities. Communities will be involved in research on livestock movements, and in the identification of appropriate entry points for TAD control.

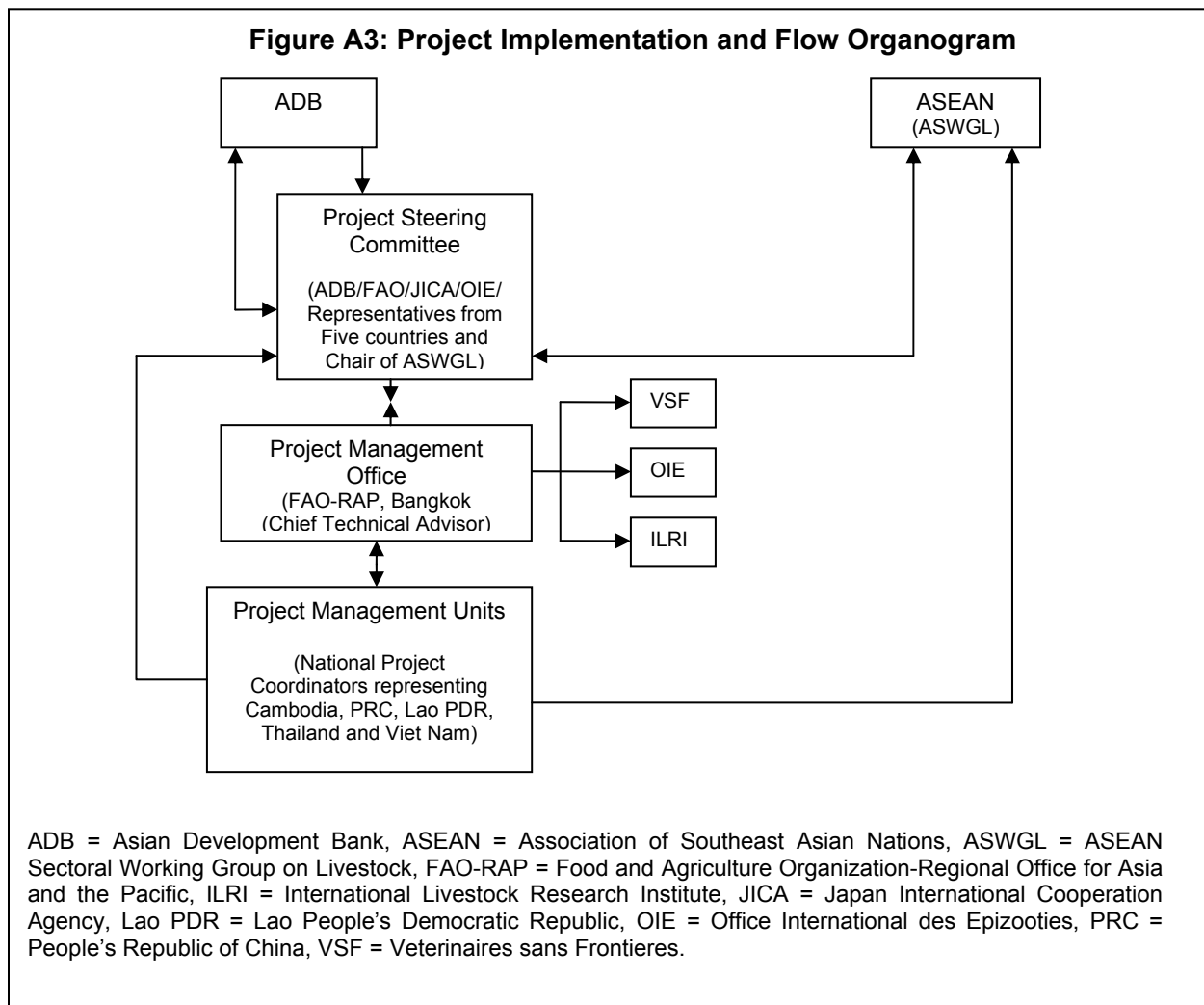
4. A regional research institute/NGO will be engaged to carry out the research into livestock trade and appropriate ways to control such movements from a TAD control point of view.

5. A project performance management system (PPMS) has been developed by the PMO in the first phase of the project. The PPMS helps to ensure that project resources are managed

¹ The implementation arrangements will support other phase two activities for which the Mission is seeking other grant financing. Additional funding for phase II activities is being sought from other sources of grant financing.

efficiently and benefits realized. The PPMS includes a participatory mechanism involving beneficiaries in project monitoring. The PMO assisted by the PMUs, will be responsible for implementing the PPMS, including the establishment and updating of baselines, through physical and socio economic surveys, data collection and analysis. The PMO will include the results of the PPMS surveys in its annual report to ADB and FAO.

6. The PC/CTA (international) for 2 person–months² and one national expert for 2 person–months³ will be engaged to implement the project activities. Outline terms of reference are in Appendix 4. In the event that experts need to be engaged outside FAO, the experts will be engaged by ADB in accordance with its *Guidelines on the Use of Consultants* (2006, as amended from time to time). ADB financed equipment and materials will be procured in accordance with ADB's *Procurement Guidelines*.



² The ADB Mission is facilitating other grant support for additional phase two activities including approximately 20 person–months more of international consultant services for the PO/CTA position.

³ The ADB Mission is facilitating additional grant support for additional phase two activities which requires approximately 16 person–months of national consultant services.

OUTLINE TERMS OF REFERENCE FOR CONSULTANTS

A. Food and Agriculture Organization (FAO)

1. Food and Agriculture Organization (FAO) will be recruited by ADB through single source selection, based on its unique global, regional, and national expertise and experience. FAO will be responsible for the following:

- (i) Host the project management office at FAO Regional Office for Asia and the Pacific in Bangkok, to be headed by project coordinator/chief technical adviser (PC/CTA);
- (ii) Provide technical assistance backstopping for international and regional collaboration with other partners in the field, including Office International des Epizooties (OIE), Association of Southeast Asian Nations (ASEAN), Japan International Cooperation Agency (JICA) among others.
- (iii) Facilitate flow of technical assistance (TA) funds to the DMCs, and ensure its appropriate use as per project objectives.
- (iv) Submit regular semi-annual progress reports including reporting on project activities, physical accomplishments, training, capacity building, surveys, and outcomes;
- (v) Facilitate the meetings of the project steering committee (PSC) and prepare reports to submit to the PSC for approval.

B. International Consultant¹

2. **Project Coordinator (Chief Technical Advisor)** (2 person-months). Under the direction of the FAO's lead technical and operational units, and in close collaboration with the FAO-RAP and the departments of livestock services of the ministries of agriculture of the participating countries the project coordinator will be responsible for:

- (i) Implementing all the activities of the project as specified in the project document including preparing detailed work plan, budget, convening PSC meetings, and submitting reports as outlined in the implementation schedule.
- (ii) Liaising with the directors of veterinary services/animal health within each country to ensure support and commitment to the national and regional disease control programs.
- (iii) Coordinating disease control activities and policies at the national and regional levels through participation of the member countries.
- (iv) Facilitating purchase and installation of the appropriate equipment for the national and regional diagnostic laboratories.
- (v) Coordinating all the field activities related to market and critical point analysis study.
- (vi) Developing epidemiological studies and overseeing the implementation of the disease survey plans through the national coordinators.
- (vii) Integrating the activities of the project with the larger phase II activities.

¹ These outline terms of reference are based on a larger consultant input than budgeted in this project budget. The ADB Mission is working on other sources of grant funding to support a larger consultant input for the implementation of the entire phase II of the TA as discussed in the TA paper.

3. The coordinator will be a veterinarian with a strong livestock development background and an infectious diseases specialist. He/She will have a PhD in veterinary medicine from an internationally recognized university; and over 15–20 years international experience in coordinating multidisciplinary, regional and international development projects in animal health. He/She will have high level contacts within the departments of veterinary services/animal health in the target countries, and OIE and FAO at the Regional and Headquarter levels; proven leadership and management skills and demonstrated expertise in transboundary animal disease (TAD) control in Southeast Asia. A good command of English, proven ability to write clearly and efficiently and good public speaking skills will be necessary. He/She should be able to travel frequently in the region.

Duty Station: Bangkok, Thailand

B. National Consultant

4. **Public Relations/Communications Expert** (2 person-months). Under the direct supervision of the Project Coordinator, and in close collaboration with the departments of livestock services of the ministries of agriculture of the participating countries, the consultant will perform the following duties:

- (i) Develop a communications plan for the project.
- (ii) Prepare quarterly reports electronically and disseminate to all the stakeholders.
- (iii) Provide regular inputs to maintain the project website up-to-date.
- (iv) Participate and report on the key meetings of the project.
- (v) Be official project photographers to record all the important events of the project
- (vi) Assist in the preparation and dissemination of communications material to all the stakeholders.
- (vii) Liaise with the press in communicating project outputs.
- (viii) Develop a recognized corporate brand for the project.
- (ix) Write media releases, power point presentations, newsletters, and background briefing papers.
- (x) Recognize newsworthy stories and act on them by providing local and international media outlets with timely and accurate briefings.

5. The national expert will be the same person employed on a full time basis to run phase II of the project. He/She will devote 2 person–months of his time to this project. The expert will be recruited locally and under the project coordinator be responsible for public relations and communications strategy of the project. The expert will have the following qualifications:

- (i) Hold a degree in communications with experience of 2–3 years in working in a development project.
- (ii) Good writing skills with information technology (IT) skills (HTML, MS Word, PowerPoint, and Photoshop).
- (iii) Good command of spoken and written English.
- (iv) Good interpersonal skills and the ability to work efficiently and communicate effectively in a multi-cultural environment.
- (v) Ability to work independently and within tight timelines.
- (vi) Ability to plan and conduct training seminars.
- (vii) Willing to travel in the region.

Duty Station: Bangkok, Thailand

C. Research Assignment to Undertake Follow-up Surveys

6. The firm will provide the services of national consultants in Thailand, People's Republic of China (PRC), Lao PDR, Cambodia, and Vietnam, to design and implement a research program on livestock trade and movement patterns in the GMS. The specializations required include economist, statistician, social anthropology, and marketing. The research will include surveys in selected sites and routes, as well as participatory research in communities, among traders, and at selected markets and border crossings. The research will be implemented over a period of six months including design, field testing, surveys, and rural appraisals, analysis and writing of reports. The research will particularly address the issues of informal trade, constraints faced by farmers in access to markets, extent of diseased/infected livestock crossing over borders, practices regarding quarantine, awareness of impacts of unregulated movements on spread of disease, barriers to regulation of trade and movement of livestock, conclusions, and recommendations.