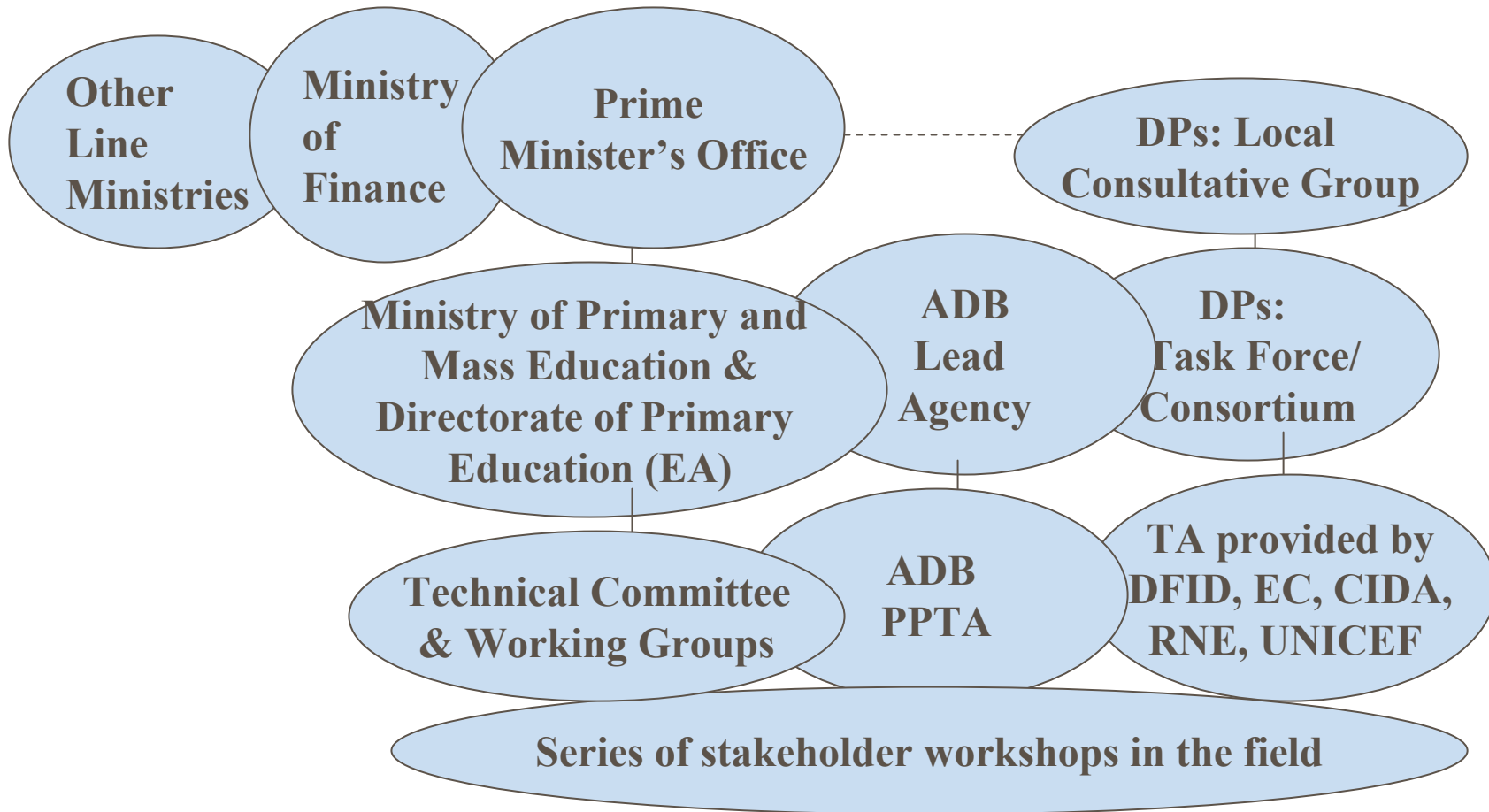


**BAN: Second Primary Education
Development Program, PEDP II
(Sector Loan)**

PEDP II - Joint Planning Process 2002-2003

Participants/Contributors

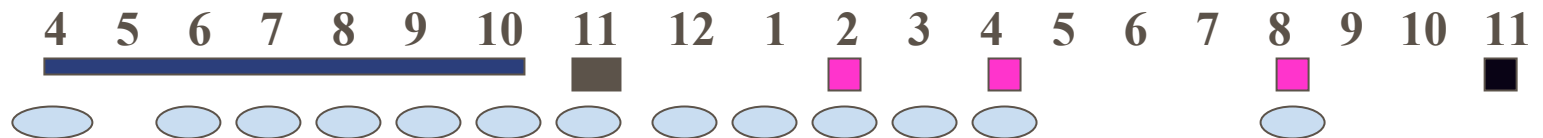


PEDP II - Major Milestones

Year: 2002

2003

Month:



■ Joint Planning of PEDP II Macro Plan

■ Macro Plan endorsed by GOB and Donors

■ Joint Fact Finding, Appraisal, and Post-Appraisal Missions

■ Board Approval

○ ADB missions

PEDP II

- **First sectorwide program in primary education in Bangladesh.**
- **Covers entire formal primary education sector.**
- **Has national vision: seeks to create the environment for nationwide improvement in primary education.**
- **Has a comprehensive policy and reform framework with particular focus on improvement of quality of primary education, supported by necessary institutional and organizational reforms and capacity building**

PEDP II

- **Aims to improve on the previous fragmented projectized approach by bringing the Government and development partners together under one coherent sectorwide program in primary education.**
- **ADB as the lead development partner will use its sector loan modality to bring together resources from major development partners through joint cofinancing arrangements, and thus adopt a much broader development perspective that might have been possible by acting alone through a conventional project mode of working.**
- **Government's Annual Operation Plans (AOPs) for Primary Education are defined as a sub-programs, and will be reviewed during joint annual reviews of the Government and development partners. AOPs are linked to 3- year rolling plan process under Government's Medium Term Expenditure Framework.**
- **An element of performance based financing is included as integral to the Policy and Reform Framework and Annual Operation Plans**

PEDP II - Financing Plan and Modalities (\$ million)

Source	Foreign Exchange	Local Currency	Total Cost	%	Type	Co-Fin	Pool
ADB	31	69	100	5.5	Loan		69
DFID	46	104	150	8.3	Grant	Joint	104
EC	31	69	100	5.5	Grant	Joint	69
RNE	15	35	50	2.8	Grant	Joint	35
NORAD	12	28	40	2.2	Grant	Joint	28
Sida	9	20	29	1.6	Grant	Joint	20
CIDA	6	14	20	1.1	Grant	Joint	14
IDA	46	104	150	8.3	Loan	Parallel	104
JICA	1	2	3	0.2	Grant	Parallel	
UNICEF &AusAID	4	8	12	0.7		Parallel	
GOB	0	1,161	1,161	63.9			
Total	200	1,615	1,815	100.0			444

PEDP II - Financing Plan (\$ million)

Source	Foreign Exchange	Local Currency	Total Cost
ADB	31	69	100
DFID	46	104	150
EC	31	69	100
RNE	15	35	50
NORAD	12	28	40
Sida	9	20	29
CIDA	6	14	20
IDA	46	104	150
JICA	1	2	3
UNICEF	4	8	12
&AusAID			
GOB	0	1,161	1,161
Total	200	1,615	1,815

PEDP II - Co-financing (\$ million)

Source	Total donor funding (\$ million)	Type	Co-Financing	Grant Funds under ADB admin
ADB	100	Loan		
DFID	150	Grant	Joint	150
EC	100	Grant	Joint	100
RNE	50	Grant	Joint	50
NORAD	40	Grant	Joint	40
Sida	29	Grant	Joint	29
CIDA	20	Grant	Joint	20
IDA	150	Loan	Parallel	
JICA	3	Grant	Parallel	
UNICEF & AusAID	12	Grant	Parallel	
Total	654			389

PEDP II - Donor Pool Funding (\$ million)

Source	Foreign Exchange	Local Currency	Total Donor Funds	Common Pool
ADB	31	69	100	69
DFID	46	104	150	104
EC	31	69	100	69
RNE	15	35	50	35
NORAD	12	28	40	28
Sida	9	20	29	20
CIDA	6	14	20	14
IDA	46	104	150	104
JICA	1	2	3	
UNICEF &AusAID	4	8	12	
Total	200	454	654	444

PEDP II

- **A PEDP II Liaison Unit at BRM is responsible for PEDP II administration, and liaison with the Government and Donor Consortium**
- **The functions of the Program Coordination Unit at the Executing Agency and Technical Support Teams (Consultants) will be embedded to the extent possible in the Government structure; they will function through the line divisions of the Directorate of Primary Education**
- **During first years there will be transition from projects to a program mode, and the functions of line divisions and GOB field offices will be adjusted accordingly, supported by institutional and organizational analysis and review**

PEDP II – Donor Harmonization

DP	Fin Mgmt	Audits	Procure ment	Mon & Eval	Review Missions	Reports
ADB	X	X	Int/local	X	X	X
DFID	X	X	Int/local	X	X	X
EC	X	X	Local	X	X	X
RNE	X	X	Int/local	X	X	X
NORAD	X	X	Int/local	X	X	X
Sida	X	X	Int/local	X	X	X
CIDA	X	X	Int/local	X	X	X
IDA	X	X	Local	X	X	X
JICA	(X)	(X)		X	X	X
UNICEF &AusAID	(X)	(X)		X	X	X

PEDP II - FUND FLOWS

