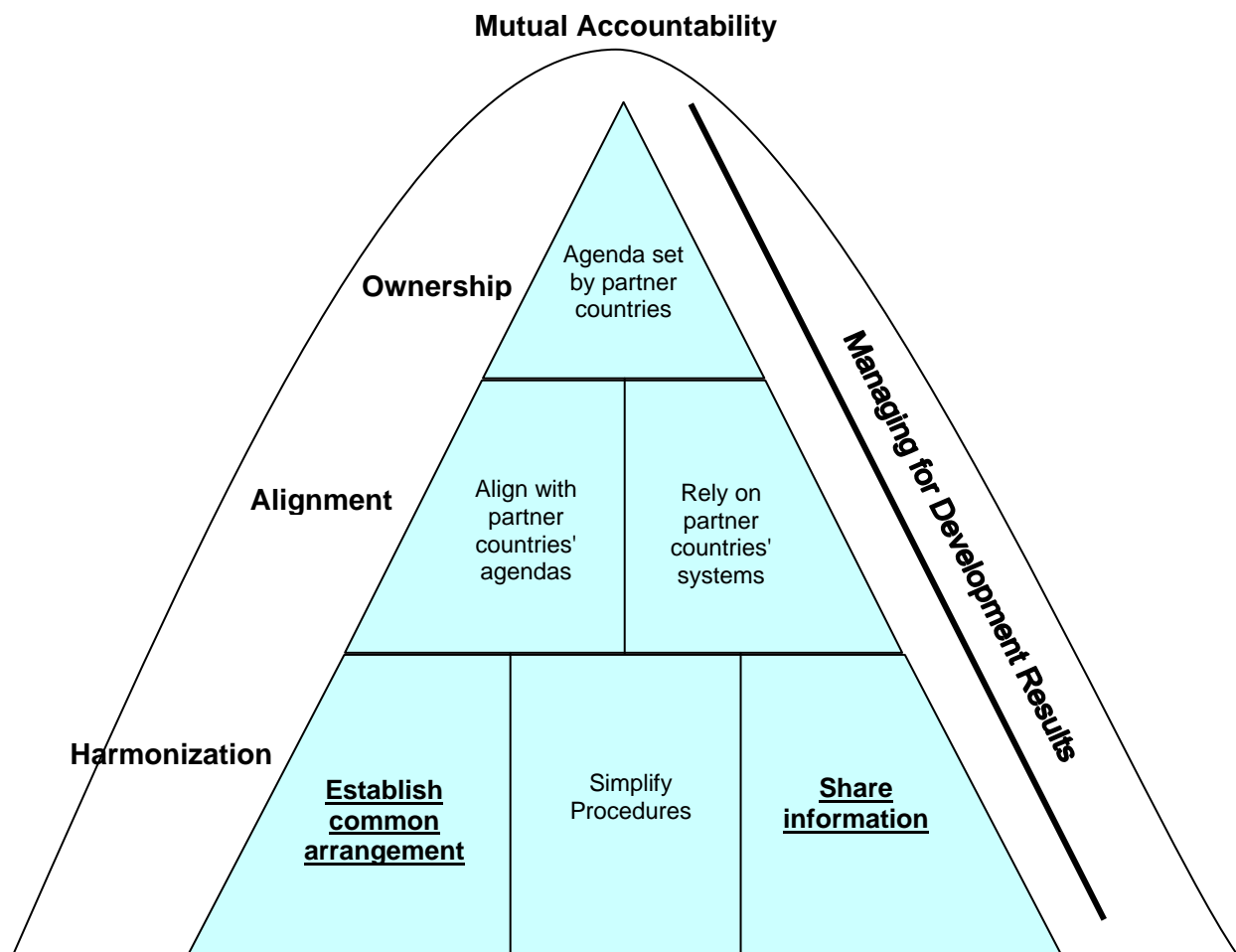


Not for Quotation, work-in-progress

CONCEPTUAL FRAMEWORK

1. Based on a slightly modified version of the Organization for Economic Development-Development Assistance Committee's Aid Effectiveness Pyramid (Figure A3.1), the special evaluation study (SES) will assess the effectiveness of the Asian Development Bank's (ADB) approaches to partnership through harmonization, particularly against: (i) the establishment of common arrangements and (ii) information sharing. For the establishment of common arrangements, the SES will examine and assess ADB's related activities, such as: sector-wide approaches, Country Strategies and Programs prepared jointly with other development partners and their processing, and the partnership coordination networks established within the countries.

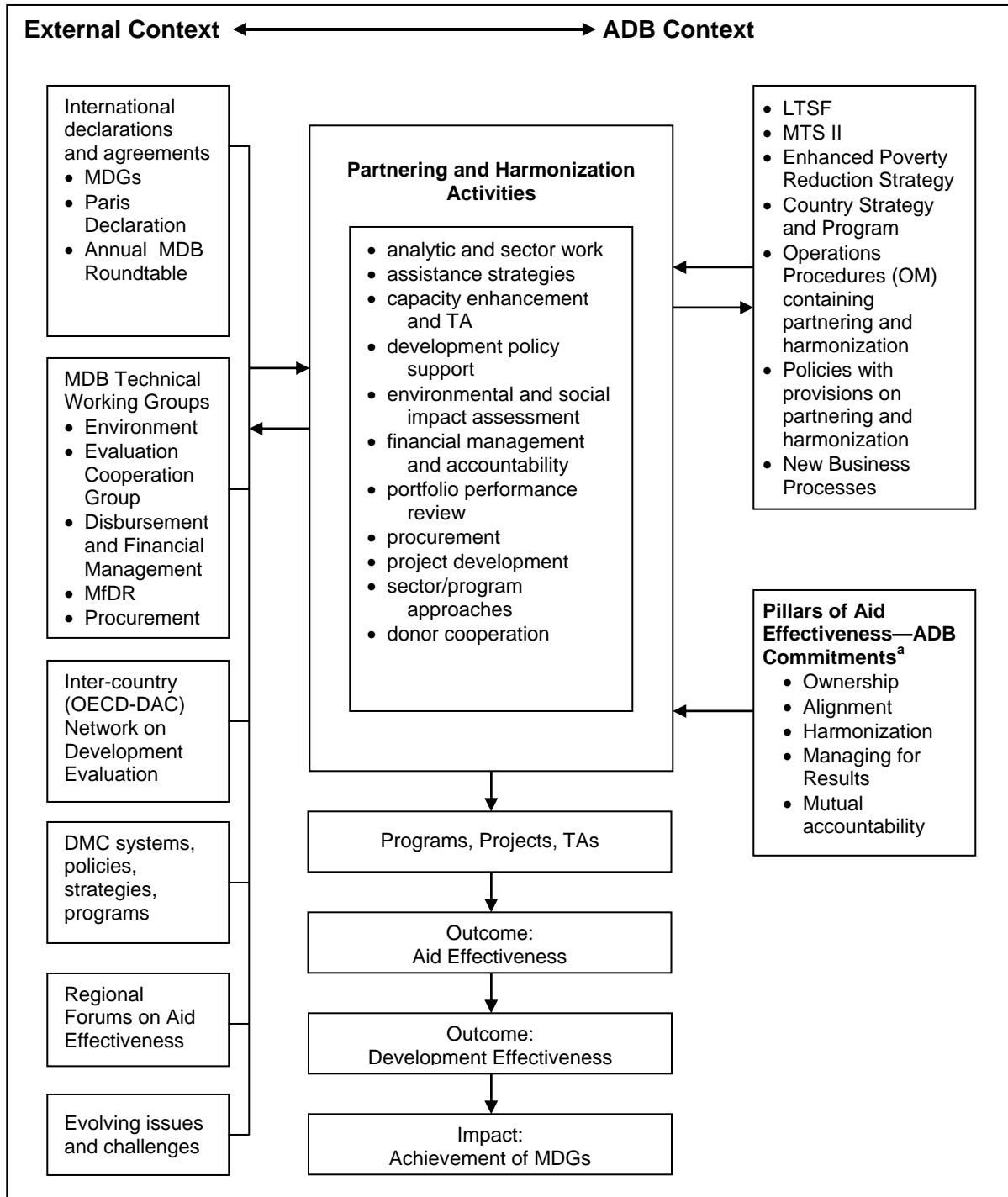
Figure A3.1: Partnership



2. When conducting the assessment of ADB's effectiveness in its approaches to harmonization, it is important to understand the key contextual considerations that influence its activities in partnering and harmonization. Figure A3.2 presents a framework that summarizes this influence.

Not for Quotation, work-in-progress

Figure A3.2: Contextual Considerations Influencing ADB's Activities in Partnering and Harmonization



ADB = Asian Development Bank, DMC = developing member country, LTSF = Long Term Strategic Framework, MfDR = Managing for Development Results, MDB = Multilateral Development Bank, MDG= Millennium Development Goal, MTS = Medium Term Strategy, OECD-DAC = Organization for Economic Development-Development Assistance Committee, OM = Operations Manual, TA = technical assistance.

^a These pillars are part of the Paris Declaration.