

# **ADB In the Pacific**

## **Developing Member Countries Orientation**

6-24 October 2008

Asian Development Bank

Manila, Philippines

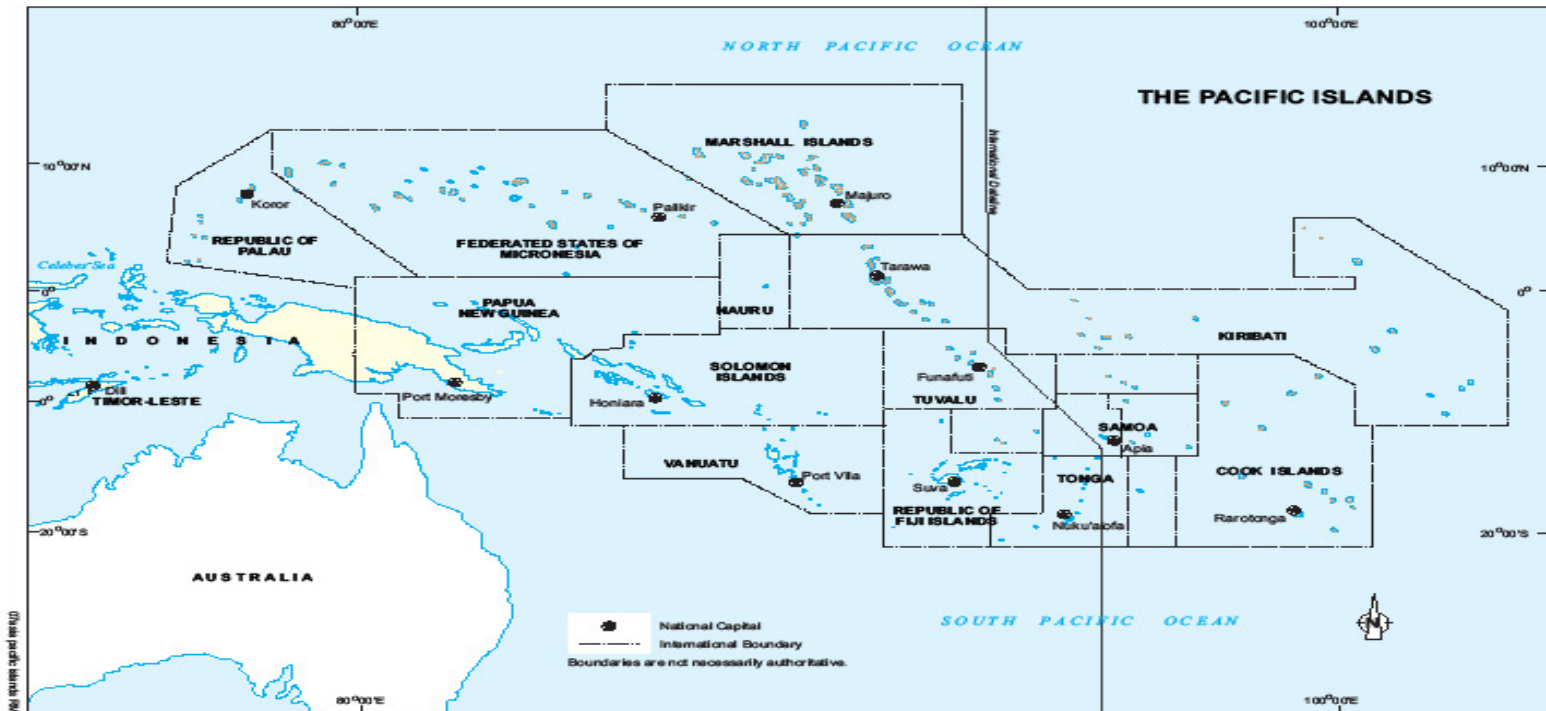
**S. Hafeez Rahman**

Director General

Pacific Department (PARD)

The logo of the Asian Development Bank (ADB) is located in the bottom right corner. It consists of a dark blue square with the letters "ADB" in white, bold, sans-serif font.

# The Pacific



- Region of Wide Diversity
- **14 PDMCs**, spread over one third of the earth's surface with a combined population of **8,348,156**

# Pacific Development Challenges (1)

- Geographic isolation, small populations (eg Kiribati 105,000 people, 33 islands and 3.5 million sq km EEZ)
- Narrow Resource Base
- Comparatively High Transaction Costs
- Climate change and environmental challenges

# Pacific Development Challenges (2)

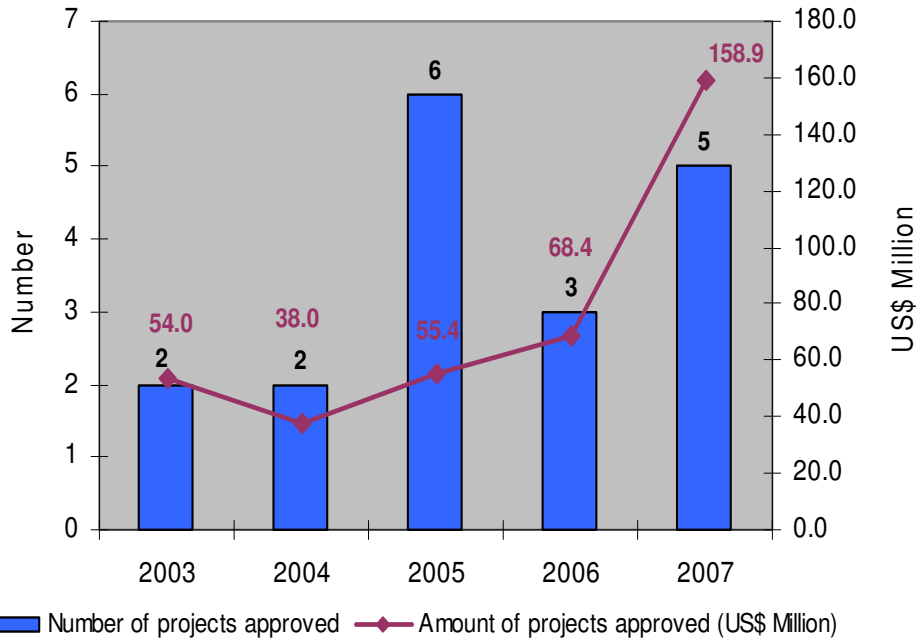
- Still maturing systems of government
- Limited HR and government capacity
- Barriers to investment and private sector development
- Poor infrastructure
- Land Issues

# ADB in the Pacific

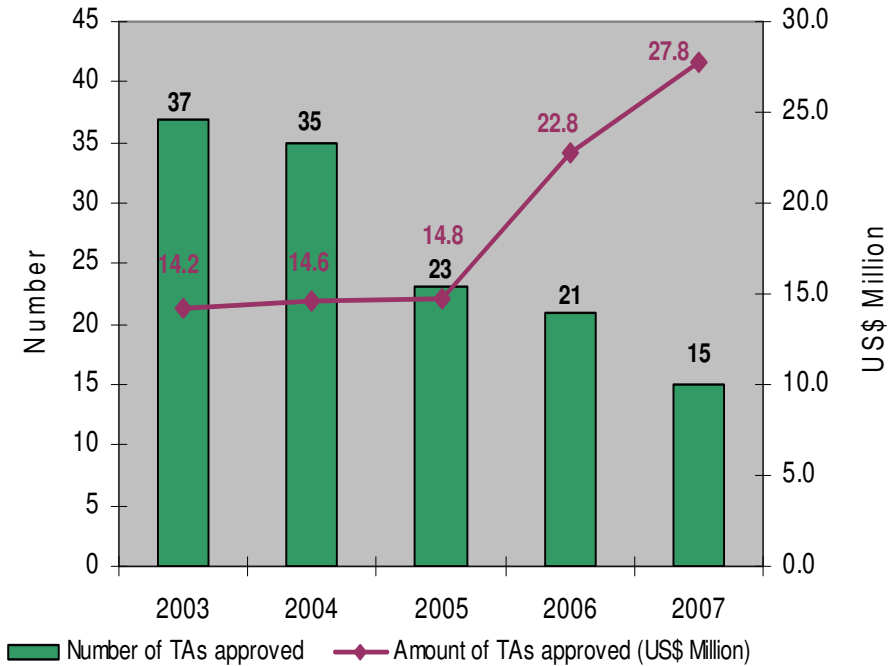
- Pacific Strategy MTR
- Addressing Fragility
  - physical and social infrastructure
  - private sector development
- Good Governance
- ADB Plays a Unique Role
  - importance of knowledge based products
  - harnessing donor financing



# ADB Pacific 2007 Lending and TA Approvals



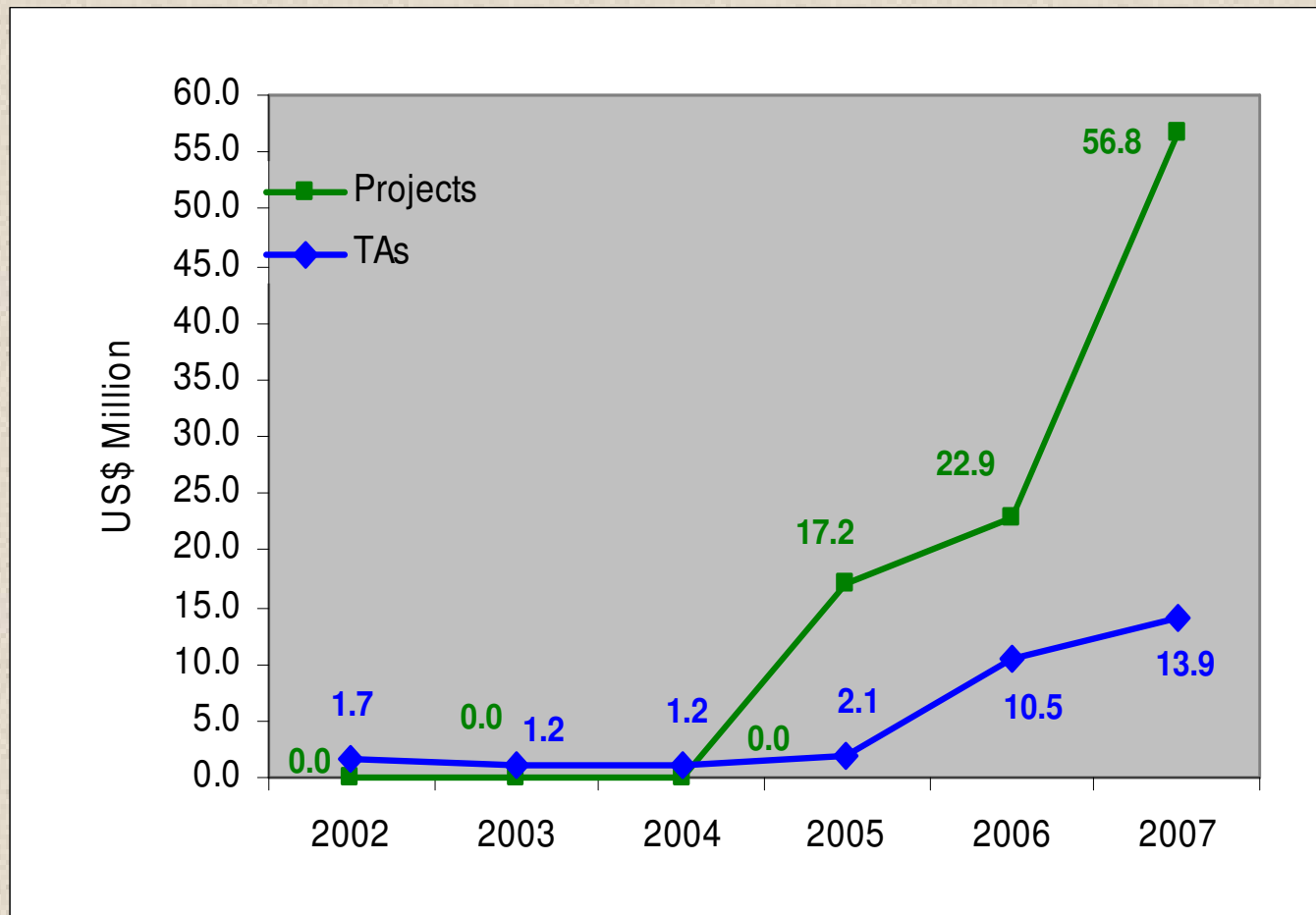
Lending



Technical Assistance



# 2007 Project and TA Cofinancing



- **Highest ever level of co-financing \$70.7 million:** loans and grants \$56.8 million and technical assistance \$13.9 million

# ADB in the Pacific

## Total ADB Assistance to Pacific Region, 1967-2008

Type of Assistance	As of 31 Dec 2007		as of 15 Sep 2008	
	No.	Amount (\$ million)	No.	Amount (\$ million)
Loans	169	1,834.04	169	1,834.04
ADF Grants	13	128.53	15	144.83
Technical Assistance	777	305.46	790	317.86

# What PDMC's can learn from the region

- Regional Cooperation and Integration
  - Economic cooperation
  - Trade
  - Infrastructure
- Enabling environment for the private sector
- Demand Driven Approaches to Good Governance
- Development Effectiveness
  - Ownership
  - Harmonization
  - Allignment



# What the region can learn from Pacific

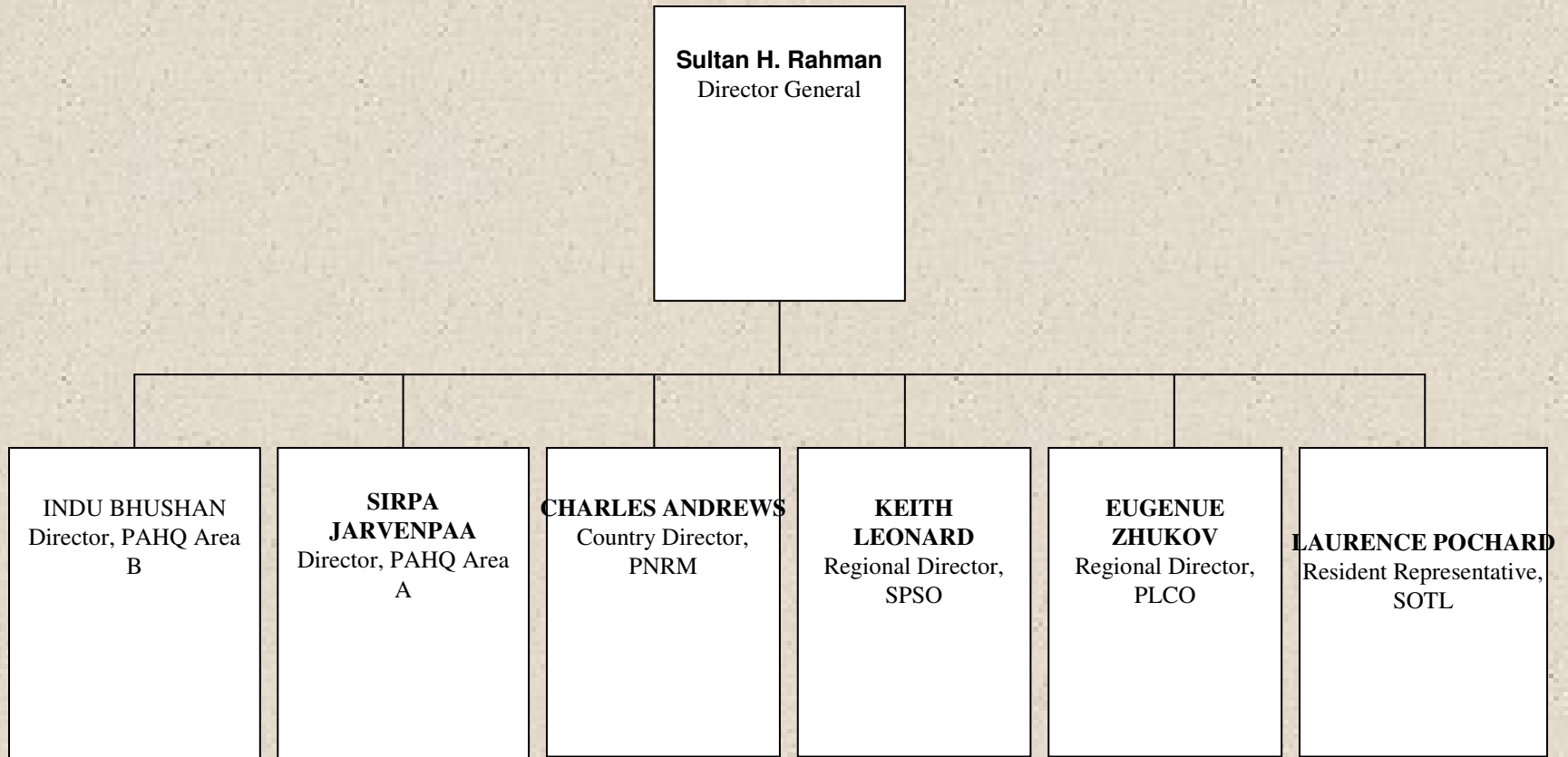
- Innovation (eg loan buy down; longer term and more flexible TAs)
- Lessons re Fragility and Vulnerability
- Cultural and economic resilience and the Shaping of State Institutions

# ADB In the Pacific

- Ways Forward:
  - Extending the Networks
  - Working with ADB on Innovative Approaches and Strategies



# PARD RMT



# Country Relationship Responsibilities

<b>ADB Headquarters (PAHQ)</b>  Sirpa Jarvenpaa Director, Area A	<b>South Pacific (SPSO)</b>  Keith Leonard Regional Director	<b>Pacific Liaison and Coordination Office (PLCO)</b>  Eugenie Zhukov Regional Director	<b>Papua New Guinea Resident Mission (PNRM)</b>  Charles Andrews Country Director	<b>Special Office for Timor-Leste (SOTL)</b>  Laurence Pochard Resident Representative
Federated States of Micronesia—Anthony Gill Marshall Islands—Kiyoshi Nakamitsu  Palau—Anthony Gill  Regional—Jeremy Guthrie	Cook Islands—Richard Phelps  Fiji Islands—Keith Leonard*  Kiribati—Emma Ferguson  Samoa—Keith Leonard*  Tonga—Keith Leonard*  Tuvalu—Thomas Gloerfelt-Tarp	Nauru—Rishi Ram Adhar*  Solomon Islands—Vinnie Wicklein  Vanuatu—Elvira Rustamova*	Papua New Guinea—Charles Andrews	Timor-Leste—Jeremy Guthrie



\* temporary

# ADB and the Pacific

- Questions?