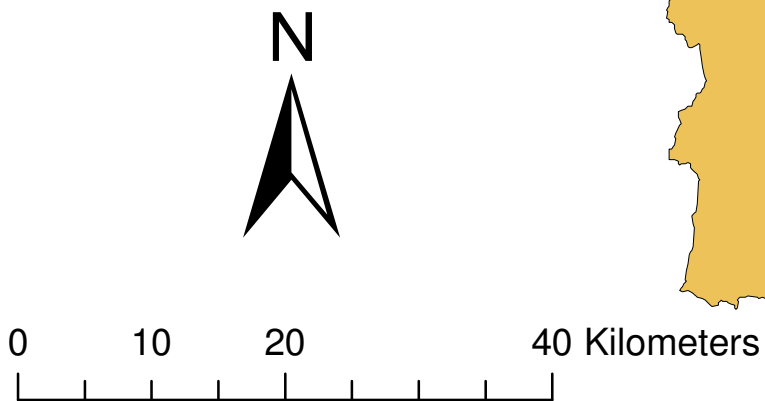
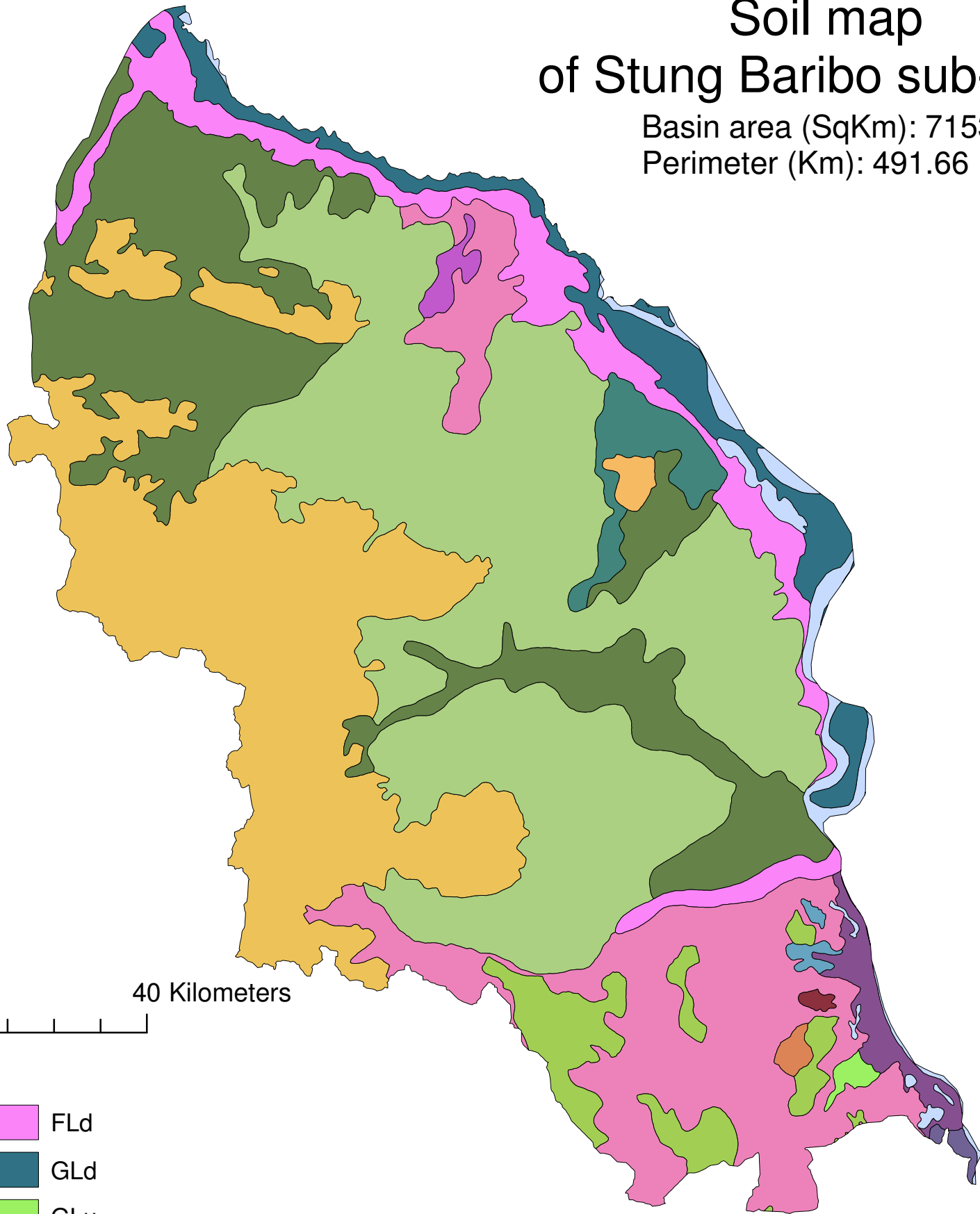


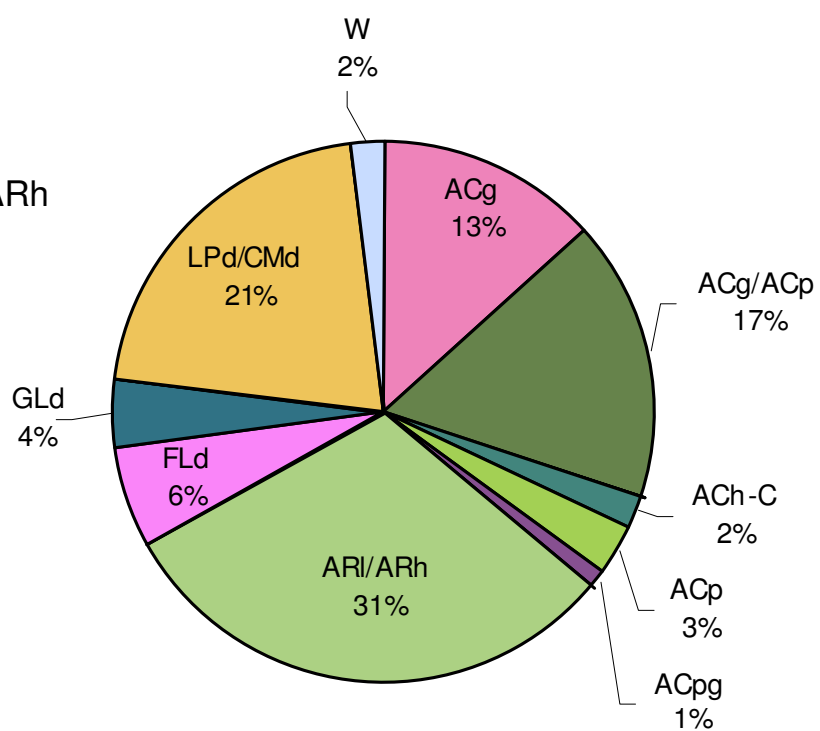
Soil map of Stung Baribo sub-basin

Basin area (SqKm): 7153.78
Perimeter (Km): 491.66



Legend

soil code	
FLd	FLd
ACg	ACg
ACg/ACp	ACg/ACp
ACga	ACga
ACh	ACh
ACh-C	ACh-C
ACha	ACha
ACp	ACp
ACpg	ACpg
ARI	ARI
ARI/ARh	ARI/ARh
CMg	CMg
GLd	GLd
GLu	GLu
LPd	LPd
LPd/CMd	LPd/CMd
Reside	Reside
W	W



CODE	SOIL_NAME	AREA ha.	%
ACg	Gleyic Acrisol	92125.37	13
ACg/ACp	Gleyic Acrisol /Plinthic Acrisol	119276.99	17
ACga	Areni-gleyic Acrisol	1523.36	0
ACh-C	Haplic Acrisol -skeletal	12159.80	2
ACh	Haplic Acrisol	2678.05	0
ACha	Areni-haplic Acrisol	1400.66	0
ACp	Plinthic Acrisols	21594.46	3
ACpg	Gleyi-plinthic Acrisol	8310.37	1
ARI	Luvic Arenosol	629.52	0
ARI/ARh	Luvic Arenosol /Haplic Arenosol	221974.17	31
CMg	Gleyic Cambisol	0.64	0
FLd	Dystric Fluvisol	40398.26	6
GLd	Dystric Gleysol	26683.32	4
GLu	Umbric Gleysol	1411.34	0
LPd	Dystric Leptosol	2277.36	0
LPd/CMd	Dystric Leptosol /Dystric Cambisol	149894.73	21
Reside	Residential Area	1048.41	0
W	Water	11991.61	2