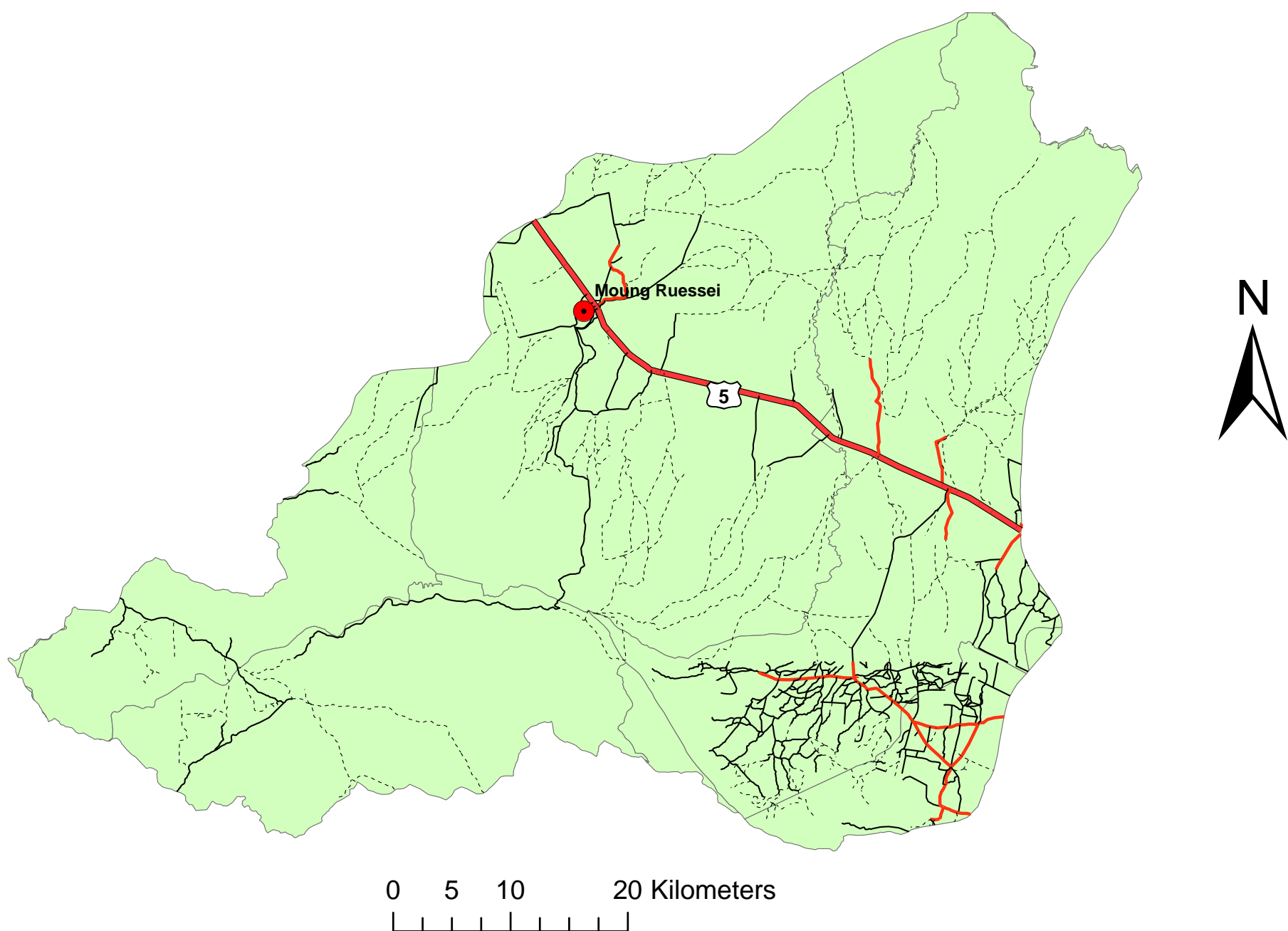


Road network of Stung Dauntri sub-basin

Basin area (SqKm): 3695.97
Perimeter (Km): 322.79



Legend

● District center

Road network

Road types

— National road

— Laterite road, one lane wide

— Access only dry season, loose surface

— Cart track

..... Footpath

□ District boundary

Road type

L_KM

Access only dry season , loose surface	76.2737
Cart track	547.3789
Footpath	965.6905
Laterite road, one lane wide	72.9757
National road	51.2649