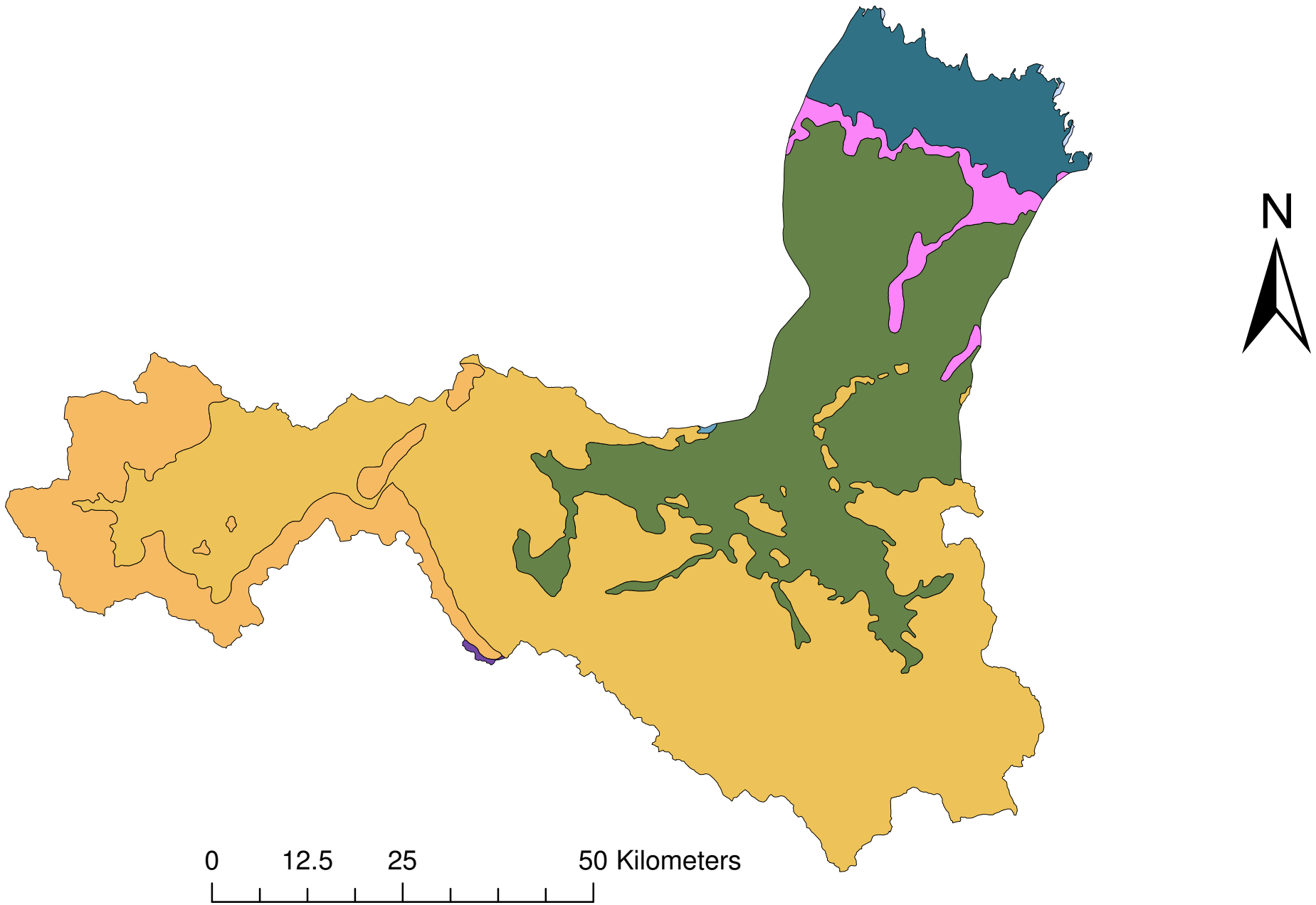


Soil map of Stung Pursat sub-basin

Basin area (SqKm): 5964.77
Perimeter (Km): 632.73



Legend

Soil data



CODE2	SOIL_NAME	PERCENT
ACga	Areni-gleyic Acrisol	0.03
ACg/ACp	Gleyic Acrisol /Plinthic Acrisol	28.17
ACh/LPd	Haplic Acrisol /Dystric Leptosol	0.07
FLd	Dystric Fluvisol	2.47
GLd	Dystric Gleysol	6.94
LPd	Dystric Leptosol	11.37
LPd/CMd	Dystric Leptosol /Dystric Cambisol	50.89
W	Water	0.07

