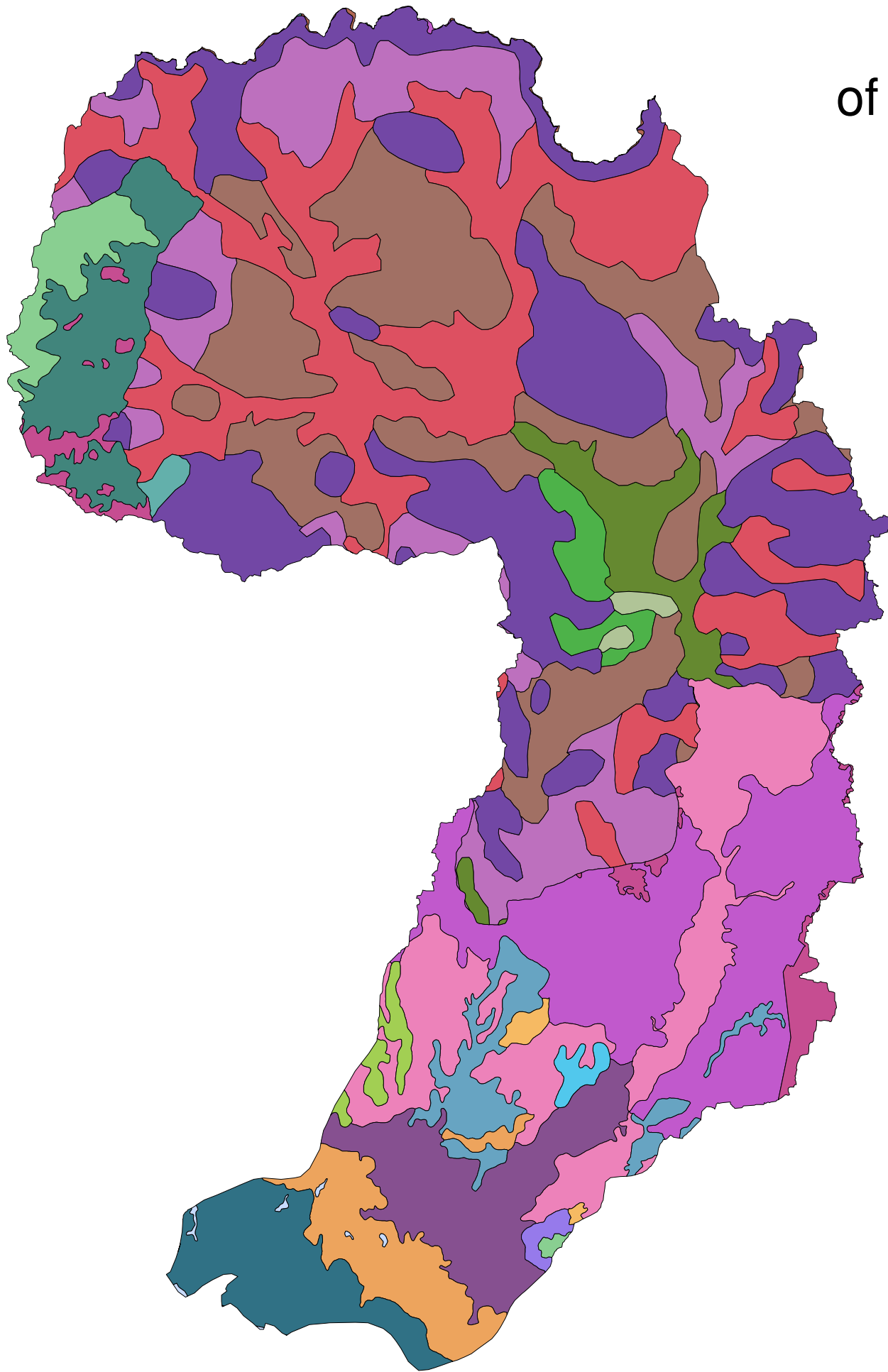


Soil map of Stung Sen sub-basin

Basin area (SqKm): 16344.22
Perimeter (Km): 898.29



0 15 30 60 Kilometers

CODE	SOIL_NAME	AREA ha.	%
ACf/ACp	Ferric Acrisol /Plinthic Acrisol	234420.18	14
ACg	Gleyic Acrisol	129002.41	8
ACg/PLd	Gleyic Acrisol /Dystric Planosol	258828.82	16
ACga	Areni-gleyic Acrisol	33653.04	2
ACh-C	Haplic Acrisol -skeletal	59354.70	4
ACh	Haplic Acrisol	163933.36	10
ACh/LPd	Haplic Acrisol /Dystric Leptosol	293473.58	18
ACp	Plinthic Acrisols	8427.46	1
ACpg	Gleyi-plinthic Acrisol	70947.57	4
ACpga	Areni-gleyi-plinthic Acrisol	4627.55	0
ARg	Gleyic Arenosol	3661.41	0
CMd	Dystric Cambisol	25123.51	2
CMd/LPd	Dystric Cambisol /Dystric Leptosol	25329.81	2
CMo/ACf	Ferralic Cambisol /Ferric Acrisol	148077.23	9
FRr	Rhodic Ferralsol	3861.48	0
GLd	Dystric Gleysol	54015.44	3
GLe	Eutric Gleysol	42831.55	3
LPd	Dystric Leptosol	3822.24	0
LPe	Eutric Leptosol	4732.14	0
PLd/ACg	Dystric Planosol /Gleyic Acrisol	19757.28	1
PTd	Dystric Plinthosol	45687.30	3
R	Rock	27.07	0
SC	Slope complex	1215.91	0
W	Water	1146.99	0

Legend

Soil data			
	ARg		R
	ACf/ACp		CMd
	ACg		CMd/LPd
	ACg/PLd		CMo/ACf
	ACga		FRr
	ACh		GLd
	ACh-C		GLe
	ACh/LPd		LPd
	ACp		LPe
	ACpg		PLd/ACg
	ACpga		PTd
	SC		W

