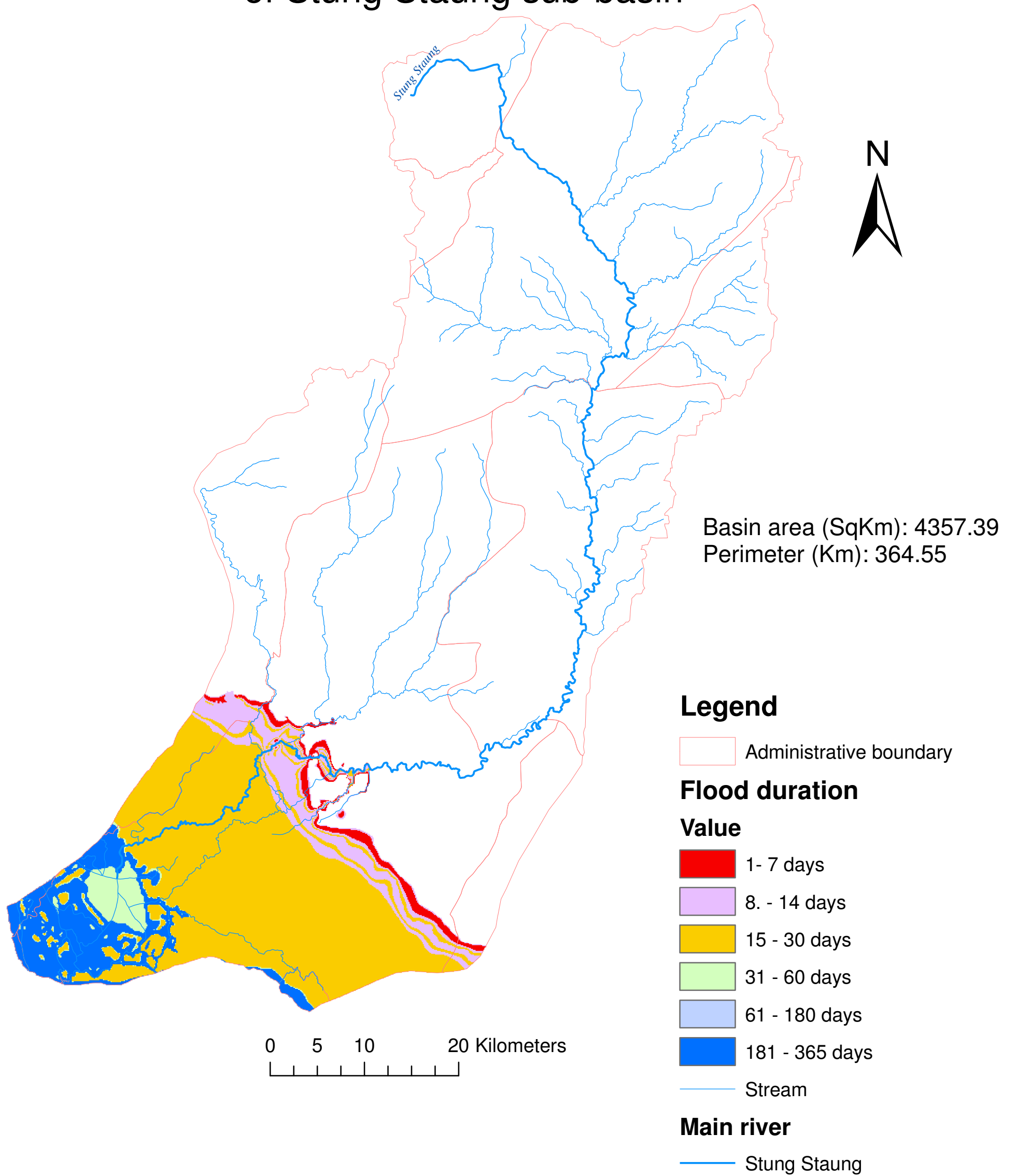


Minor Flood duration (days) of Stung Staung sub-basin



PERIOD	MAX_HA	MIN_HA
1 (1- 7days)	761	2906
2 (8- 14 days)	525	10377
3 (15- 30 days)	2808	57086
4 (31- 60 days)	5626	4215
5 (61- 180 days)	53822	0
6 (81- 365 days)	40682	13477