

The views expressed in this paper are the views of the authors and do not necessarily reflect the views or policies of the Asian Development Bank (ADB), or its Board of Directors or the governments they represent. ADB makes no representation concerning and does not guarantee the source, originality, accuracy, completeness or reliability of any statement, information, data, finding, interpretation, advice, opinion, or view presented.

Enhancing Social and Gender Statistics Workshop

Bangkok, Thailand

May 28- 31, 2002

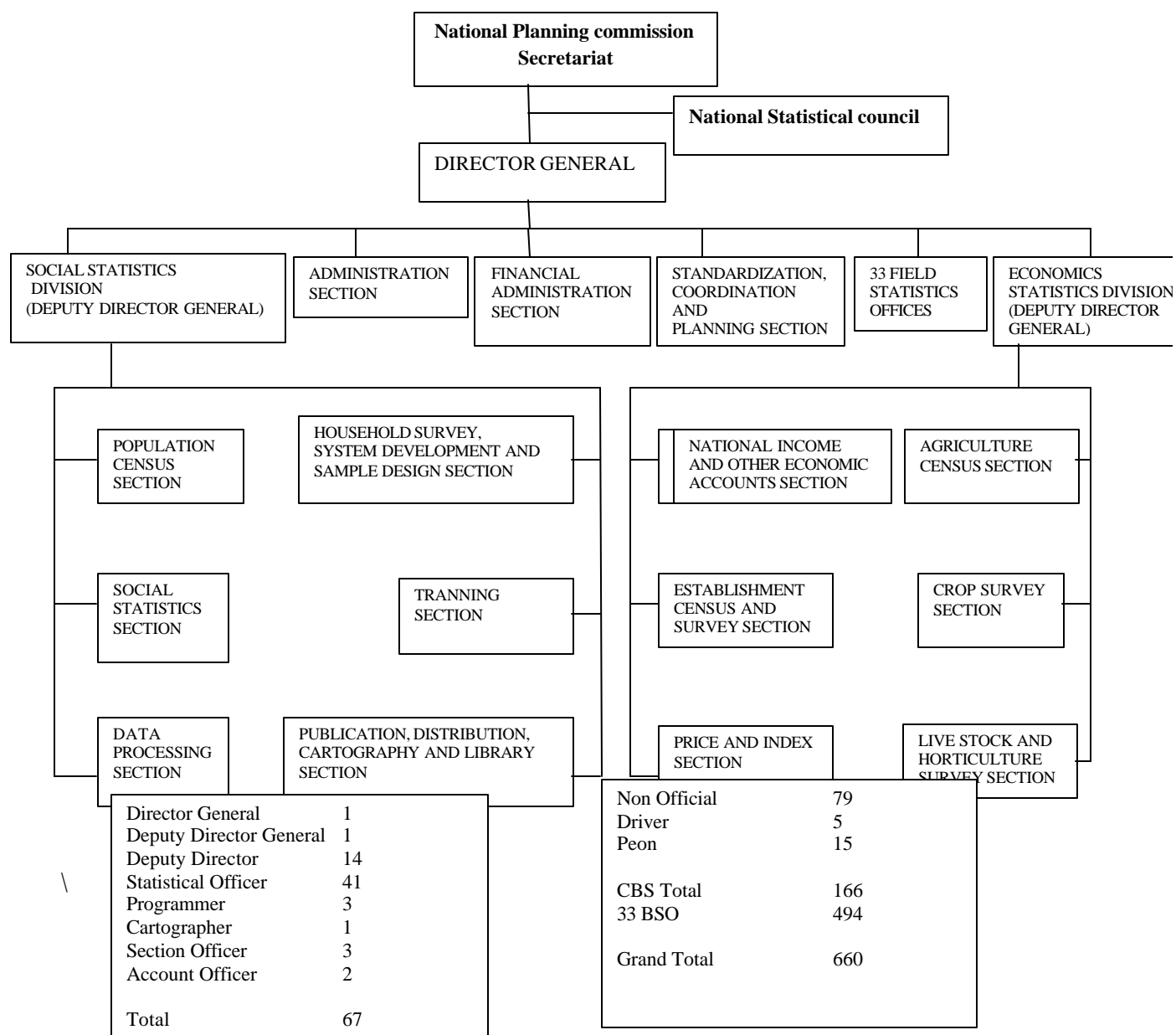
Country Paper: Nepal

Krishna Prasad Shrestha

A. Organization of Statistical Services:

1. Central Bureau of Statistics is the Government Central Agency responsible for collection, consolidation analysis and publication of statistics. It is under the umbrella of National Planning Commission. By Statistical Act 2015 BS (1958 AD) Central Bureau of Statistics (CBS) has been given sole power to do. Due to low status of CBS, lack of trained manpower, lack of coordination among different ministries/ departments and agencies, the system could not run according to the statistical Act. In practice statistical system in Nepal is highly decentralized, different government agencies, private institutions collect statistics of diverse nature and when they consider it necessary often without consulting other concerned agencies. Due to various constraints the CBS has been unable to play the role of coordinator and standard setter in the field of official statistics.

ORGANIZATION STRUCTURE OF CENTRAL BUREAU OF STATISTICS



2. Primarily it is Central Bureau of Statistics to collect social statistics from population census, agricultural census and different surveys. There are other government agencies which collect social statistics from the existing Management Information System (MIS) or by survey or by both in their respective institutions. The major ministries/ institutions for collecting social statistics are as follows.

1. Ministry of Health.
2. Ministry of Education and Sports
3. Ministry of Local Development
4. Ministry of Agriculture and Co- operative
5. Ministry of Physical Planning and Construction
6. National Planning Commission
7. Ministry of Home Affairs
8. Ministry of Information & Communication
9. Ministry of General Administration
10. Ministry of Labour and Transport
11. Ministry of Population and Environment
12. Different Universities/ NGOs etc

3. The Statistics collected through different agencies are generally posted in their respective publications. The important statistics are posted in Statistical Year Book, Statistical Pocket Book, Nepal in figure, Statistical Bulletin (four monthly) published by Central Bureau of Statistics in its standard format.

4. Though Statistical Act 1958 (2015 BS) has made provision for all the government organization, semi government agencies, organization, private or foreign organization or individual to take permission from the Central Bureau of Statistics to collect, compile, analysis, disseminate and use of the information. But it is not effective and operating accordingly up to date.

In the Bureau under the Social Statistics Division there are 27 officials and 27 clerical staff for these jobs in Household survey section, Population section, Publication, distribution,

cartography and library section, Data processing section, Training section and Social statistics section. But for compiling social statistics there are only 3 officials and 3 clerical staff in Social statistics section according to present organogram.

5. There is problem of getting of statistics from different ministries/departments and institutions in time. Strong follow up is felt to collect such information. We collect primary data by different surveys conducted by CBS as well as by different agencies. Secondary data are also collected from different institutions. Most of the secondary data are collected through the Management Information System (MIS) of the respective institutions.

B. Historical Background

1. It was first modern scientific population census 1952/ 54 which started to collect social statistics and compilation of such statistics. The series of compilation and publication started as Statistical Pocket Book in 1974 and Statistical Year Book in 1987. Women of Nepal Some Statistical Facts published from 1992.
2. The recent publications are: Statistical Year Book 2001, BCHIMES 2000 Report published in 2001, Nepal Demographic and Health Survey Report 2001 published in 2002. Population census 2001 summary tables of the main findings of final result is published recently. The detail reports will be published in near future.
3. The major users of social statistics are the different ministries/departments, donor agencies national and international agencies, planners, policy makers, researchers, educational institutions etc. The results from recent publications were widely used to prepare Millenium Decade Indicators, Evaluation of Ninth Five Year Plan and for formulation of Tenth Plan by National Planning Commission.
4. These statistics are used for formulating plans and programs as well as monitoring and evaluation of the plans and programs. The following are the series of publication for social statistics.

1. Statistical year book, every alternative year 1999, 2001.
2. Statistical Pocket book, every alternative year 2000, 2002
3. Nepal in Figure, every year.
4. Statistical Quarterly Bulletin: 3 issues, every year.
5. Health Management Information, every year.
6. Nepal Living Standard Survey 1995/ 96, 2003.
7. Report on the Situation of Women, Children and Households: Between Census Household Information, Monitoring and Evaluation System (BCHIMES) 2000.
8. Population census 2001.
9. Nepal Demographic and Health Survey 2001.
10. Education Statistics of Nepal, every year.
11. Labour and Employment Statistics through LMIS, every year.
12. Services provided by Family Planning Association of Nepal, every year.
13. Service provided by Nepal Red Cross Society, every year.
14. Crime Statistics, every year.
15. Natural calamities, accidents etc, every year.

C. Data Sources:

1. The data used for compilation of social statistics are the following.
 - (i) Population Census, Agriculture Census, Establishment survey,
 - (ii) Official records from different ministries/ departments through respective management information systems (MIS),
 - (iii) Different surveys conducted by different government/ non- government organizations,
 - (iv) Information from other sources.
2.
 - (i) Population Census, Agriculture Census is conducted in decennial.
 - (ii) Establishment survey in quinquen.
 - (iii) Demographic and Health survey in quinquen.
 - (iv) Nepal Standard of Living Measurement Survey in quinquen.

- (v) BCHIMES- Frequently as needed in between population censuses.
 - (vi) Labour force survey quinquen 1999/2000.
3. Results from population census is available after one to two year. The survey analytical report is available generally within one year after the completion of the survey. The administrative records are available after completion of fiscal year (i.e. one year interval).
 4. The data are used by different ministries/departments, Planning Commission, agencies, international organizations, researchers, universities etc
 5. The different ministries/ departments/ institution who generate statistics from their respective management information system are responsible for publication of these data. For the survey data respective institutions are responsible who are involved in data collection, compilation, analysis and producing the reports. For example Ministry of Education and Sports is responsible for Education Statistics. Similarly Ministry of Health/ Department of Health Services is responsible for producing Health Management Information Statistics as well as Nepal Demographic and Health Survey Report etc.
 6. In between census years, we conduct surveys to compile social statistics.
 - (i) They are Nepal Multiple Indicator Surveillance (NMIS) started in 1995 and continued up to 1997, 6 rounds of surveys were conducted focussed on different subjects. From that source information is available for Nepal, rural/urban and 15 Eco. Development region (subnational) covering about 18500 households from 144 clusters covering 37 districts of the country.
 - (ii) Between Census Household Information (BCHIMES) 2000 is the improved version on NMIS which provides information on National, Urban, Rural, 2 Mountain zones each 5 regions from Hills and Terai as well as the indicator for Kathmandu Valley (208 clusters: 181 rural, 27 urban) from 69 districts and covering about 10,500 households.

- (iii) Nepal Living Standard Measurement Survey (NLSS 1995/96 covered about 3400 households from 273 clusters covering 72 districts. At present NLSS 2002/3 covers about 5400 households from 434 clusters covering 73 districts.
 - (iv) Nepal labour Force Survey 1998/ 1999.
 - (v) Poverty Monitoring Strategy Survey District level: Survey in 10 districts will be launched in 2003, 15 districts in 2004, 25 districts each in 2005 and 2006 covering all 75 districts of the country in 4 years time period.
 - (vi) Nepal Demographic and Health Survey 2001 (Final results disseminated in May 2002) .
7. In most of the sample surveys, we use stratified probability proportion to size (PPS) methodology to select the sample. We have vital registration system in Nepal. This system operates under the Ministry of Local Development. The coverage of vital statistics is not at the level of satisfaction which is less than 50% at present. It is improving over the years. The results from vital registration due to low coverage is difficult to use.

D. Estimation Methodology

1. For fertility mortality estimation we use direct and indirect estimation. We use P/F Ratio method, Arriaga method, Trussell method for fertility estimation and United Nation models, Coale - Demeny models for mortality estimation as well as sisterhood method for maternal mortality.
2. Standardization is lacking in the definition. Duplication of work and none availability of data in time is a general problem. Producer are reluctant to provide information. On the absence of statistical cadder and frequent transfer of staff dealing with statistics in

different ministries and institutions as well as lack of skilled and trained manpower makes data compilation more difficult.

3. We get support from other officials and agency but we have to try hard and follow up. We get support from international organizations to some extent.
4. Since vital registration system is very poor. We are unable to use these data to derive social statistics.
5. We produce social statistics with gender break down wherever it is possible. We have produced women of Nepal Some Statistical Facts from 1992. The 6th edition is in progress and we produce in sub-national level where there is possibility. Social statistics on gender disaggregation are available up to district level for some indicators. It depends on the source of data. By most of the national level survey gender statistics on district levels are not available but from official management information system most of the statistics are available up to district level. The population census 2001 has given special emphasis on gender and will provide lot of information on gender disaggregation up to district level.

E. Social Statistics Compilation Program:

Countries with regular compilation of Social Statistics

1. We want to improve the compilation of social statistics by writing analytical explanation and notes with wider coverage of most essential statistics by gender disaggregation.
2. We need to conduct special surveys in an integrated and coordinated way to meet the data gap. For this we need some technical and financial support from the donor agencies to develop the quality manpower for conducting survey and analyze the data independently in the Bureau. We need to work hard and cooperate with the respective agencies who are producer and users of data.

3. We need to strengthened the analytical capacity by providing advance training and workshop facilities to our statistical officers.

4. There should be Statistical Plan. Who should produce what statistics at what level and when? There should be Coordination and Standardization Division to fulfill the data need by different agencies. Standard concept and definition should be applied to produce statistics for national and international comparability as well as to monitor and evaluation of the plans and programs.
