

# NARBO - TOT

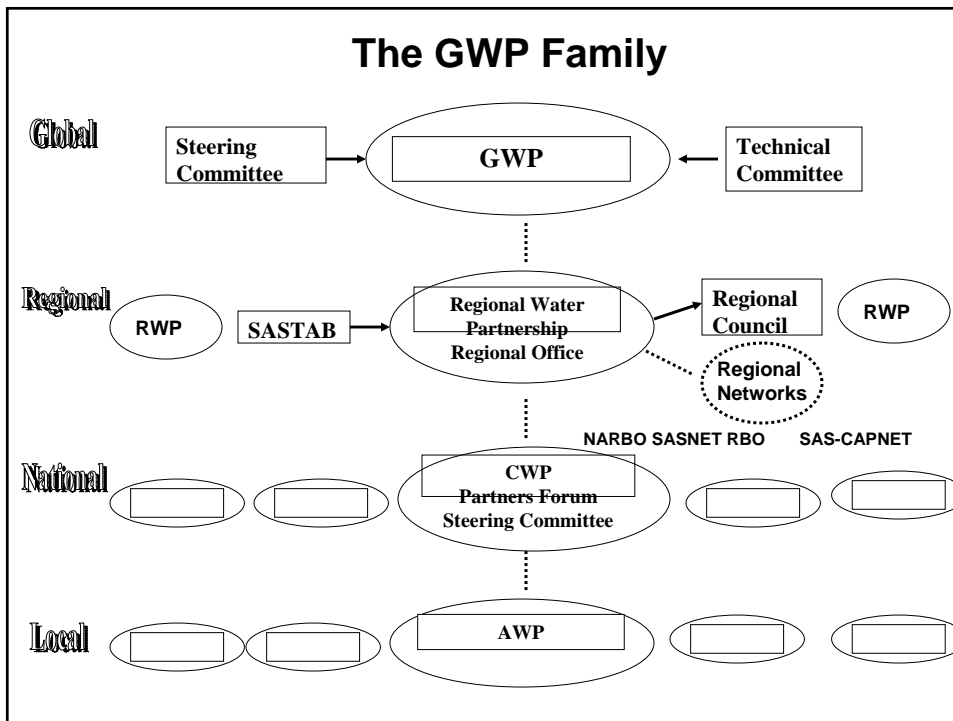
## Role of GWP South Asia and CWPs in River Basin Management

Nanda Abeywickrama  
Chair GWP-SAS  
24 April 2005

*The views expressed in this paper are the views of the authors and do not necessarily reflect the views or policies of the Asian Development Bank (ADB), or its Board of Directors, or the governments they represent. ADB does not guarantee the accuracy of the data included in this paper and accepts no responsibility for any consequences of their use. Terminology used may not necessarily be consistent with ADB official terms.*



### The GWP Family



# GWP

## Principles

- **Autonomy at each Level**
- **“Structured Informality”**
- **Cascade rather than a Hierarchy**

## Goals

- **Promoting IWRM through Partnerships**
- **Creating Platforms and Forums**
- **Forging Strategic Alliances.**
- **“Honest Broker” Role**
- **Outreach for Research and Knowledge**

## Evolution of SASNET-RBO

1999	GWP – SASTAC designates Sri Lanka as lead country for RBM.
2000 July	Regional workshop on Sustainable RBM held in Colombo
2000 Nov	Delhi Declaration on RBM at IWRC endorsed the recommendations from Colombo
1999-2001	Consultations with GWP – INBO to launch SASNET-RBO as an AP
2001	SASNET – RBO formed and MASL designated as Driver Agency.
2002 January	3 ½ year Work Plan developed at Regional Meeting
2003 Nov	Formal launch at Lanka Jalani Partners Forum
2004 Feb	SASNET RBO – admitted to NARBO with MASL as Vice Chair to represent South Asia and SASNET-RBO

## WAY FORWARD

- GWP-SAS congratulates NARBO and will collaborate to strengthen and integrate SASNET-RBO with NARBO.
- SASNET-RBO though, will retain its identity within South Asia –e.g: as a Module /Satellite.
- GWP-SAS will vigorously promote RBM/RBO within the IWRM Theme.
- CWP's will collaborate with RBM efforts at national and sub national levels.
- CWP's will initiate and foster AWP's as building blocks for potential RBO.
- GWP-SAS will promote water as an entry point for  
RBM → NRM → Livelihoods

## Current Constraints

- Identifying country and basin level focal points.
- Institutional strength of Driver Agency.
- Regular interaction among NARBO, GWP-SAS and Driver Agency.

Thank you

**Look forward to a fruitful collaboration.**

## **Bottom Up**

AWP (Area Water partnerships)

as Building Blocks for RBM → SASNET-RBO

- At River basin/Sub-Basin Level
- A unique innovation under GWP – South Asia since 2001
- An inclusive Partnership for all stake holder reps.

## **FEATURES**

- A platform for Dialogues
- Open and inclusive
- Consultation and Consensus for Bridge Building
- Dialogue – Action – Dialogue – Problem Solving Mode

## **ILLUSTRATION**

Four basins in Sri Lanka

- Maha Oya.
- Malwudu Oya
- Upper mahaweli
- Menik Ganga

Some 30 AWP's in South Asia

## Unique and /or common problems identified

- Soil erosion
  - Deforestation
  - Drying up of springs
  - Point source Pollution(Industry)
  - Non –point source(H/H .Farming)
  - Mangrove destruction
  - Saline intrusion
  - Illicit liquor
- 
- Solid Waste disposal
  - Sand mining
  - Coastal erosion

## Underlying Causes

- Policy Failures
- Institutional Failures
- How to breach the Vicious circle

### Way ahead: Soft Options

- Networking
- Communication -Dialogues
- Water as an Entry Point for RBM--→ NRM.-> Improved Health -> Livelihoods.

## **For Action**

- Identify Trigger Issues from your country/basins
- Eg. Excessive sand mining( AWP) pushed GOSL to frame National Sand Policy