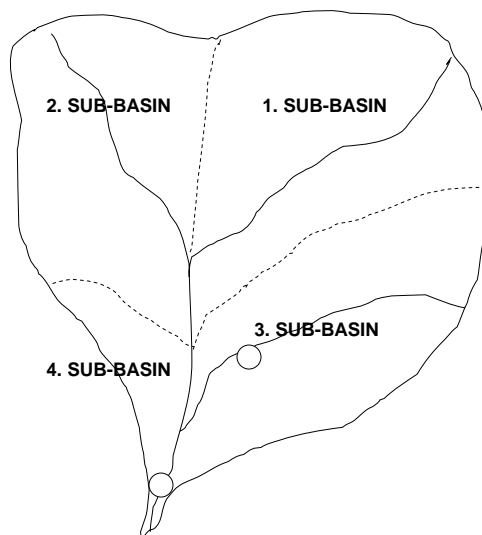


# DESIGNING AN APPROPRIATE INSTITUTIONAL SYSTEM

## GROUP 1

*The views expressed in this paper are the views of the authors and do not necessarily reflect the views or policies of the Asian Development Bank (ADB), or its Board of Directors, or the governments they represent. ADB does not guarantee the accuracy of the data included in this paper and accepts no responsibility for any consequences of their use. Terminology used may not necessarily be consistent with ADB official terms.*

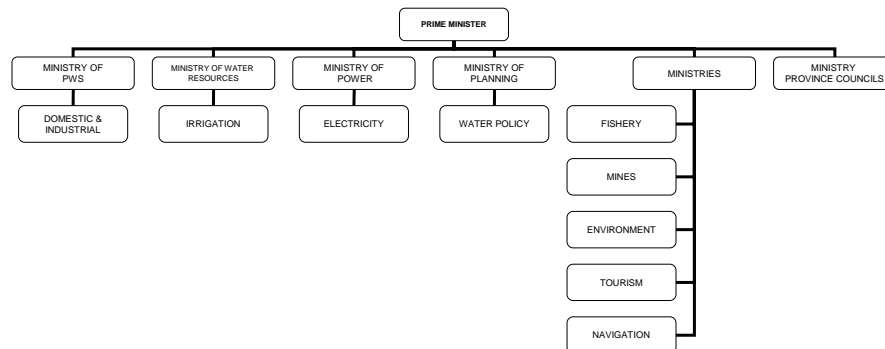
## BASIN MAP OF “A”



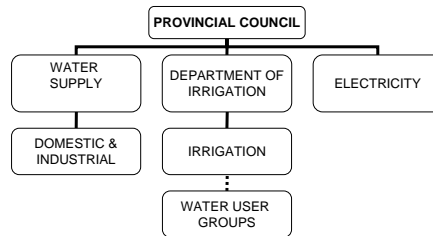
## BASIN FEATURES

- FAST ECONOMIC GROWTH
- INVESTMENT IN NEW BUSINESS
- PEOPLE MIGRATING TO CITIES
- SOME GROUPS ARE RESISTANT TO CHANGES
- WATER IS GETTING SCARCE
- ENVIRONMENTAL DEGRADATION
- DEVOLVED SYSTEM OF GOVERNMENT
- NO COST RECOVERY IN CANAL IRRIGATION
- WATER POLICY INTRODUCED
- LOCAL LEADER IS PROPOSING INTER-BASIN TRANSFER OF WATER TO MEET THE INCREASING DEMAND

## GOVERNMENT OF SAARCKIA WATER SERVICES (EXISTING INSTITUTIONS)



GOVERNMENT OF SAARCKIA  
WATER SERVICES (EXISTING INSTITUTIONS)  
PROVINCIAL LEVEL

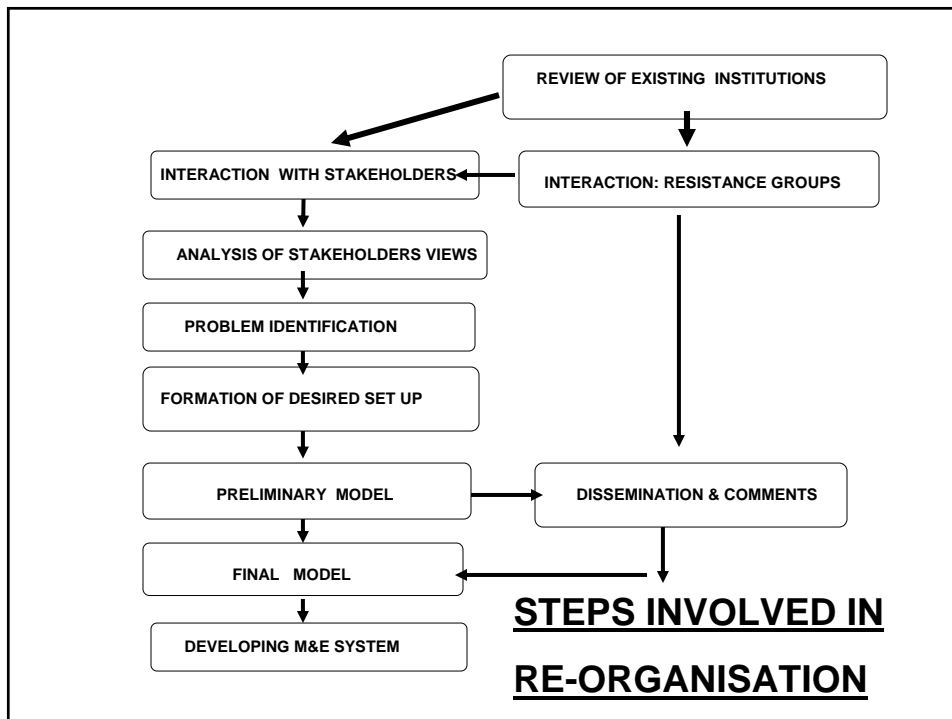


## CONSTRAINTS

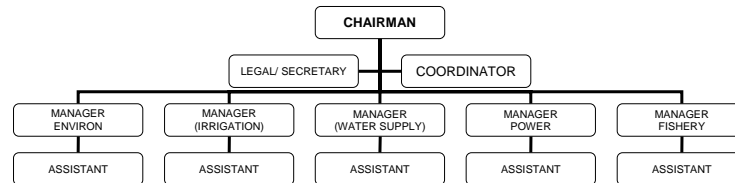
- INCREASE IN DEMAND.
- LACK OF ALLOCATION OF WATER RIGHTS.
- NO COST RECOVERY.
- INTER-PROVINCE CONFLICTS.
- WATER IS SCARCE AND CONTAMINATED.
- LACK OF COORDINATION.
- LACK OF ACCOUNTABILITY.
- LACK OF PARTICIPATION.
- ENVIRONMENTAL CONCERNS.
- LACK OF ENFORCEMENT OF WATER POLICY

## ENABLING CONDITIONS....

- WHERE THE PROBLEM LIES???.
- POLITICAL ATTRIBUTES: REPRESENTATION & BALANCE OF POWER.
- INFORMATION ATTRIBUTES PROCESS, AVAILABILITY.
- LEGAL AUTHORITY & STATUTES.. ADEQ. POWER, LEGISLATION
- RESOURCES.
  - *HUMAN RESOURCES.*
  - *FINANCIAL RESOURCES.*
  - *INSTITUTIONAL*
  - *INFRASTRUCTURAL*



GOVERNMENT OF SAARCKIA  
**A** RIVER BASIN ORGANISATION



## ROLE OF NEW RBO

- ENSURE RESOURCE CONSERVATION
- ENSURE ENVIRONMENT COMPLIANCE
- ENFORCEMENT OF WATER POLICY
- WATER ALLOCATION
- MINIMUM FLOW IN THE RIVER
- PRICING & WATER USE PERMITS
- GROUNDWATER
- MONITROING

# RIVER BASIN COORDINATION COMMITTEE

