



League of United People's Organization Network (L.U.P.O.N.)

of Manggahan Floodway

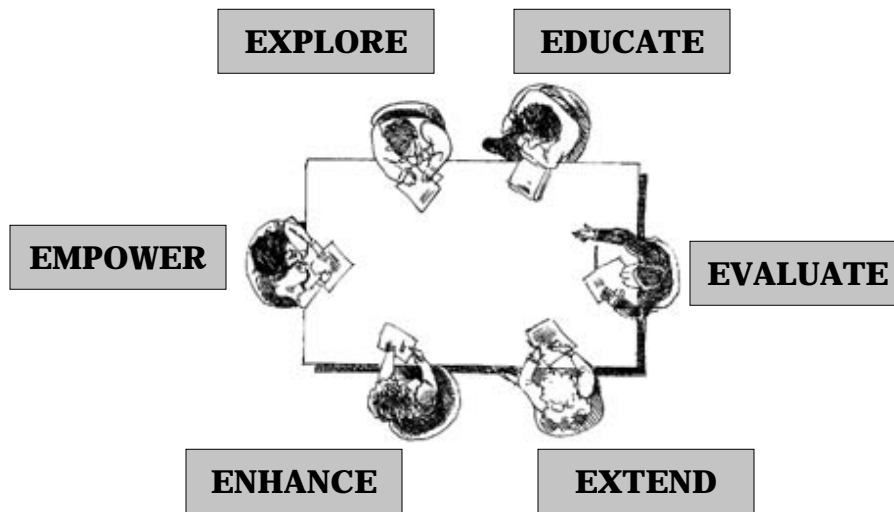


**Asian Water and Development
Outlook (AWDO) Report
August 23, 2007
SINGAPORE**

**It is not just giving the poor the water they can use but
rather the water they can understand**

The views expressed in this paper are the views of the authors and do not necessarily reflect the views or policies of the Asian Development Bank (ADB), or its Board of Directors, or the governments they represent. ADB does not guarantee the accuracy of the data included in this paper and accepts no responsibility for any consequences of their use. Terminology used may not necessarily be consistent with ADB official terms.

6E PRINCIPLE'S



EXPLORE

The LUPON federation started back in 2004 when the private concessionaire (MWCI) introduced a system of water distribution in the form of bulk selling scheme to Manggahan Floodway residents.

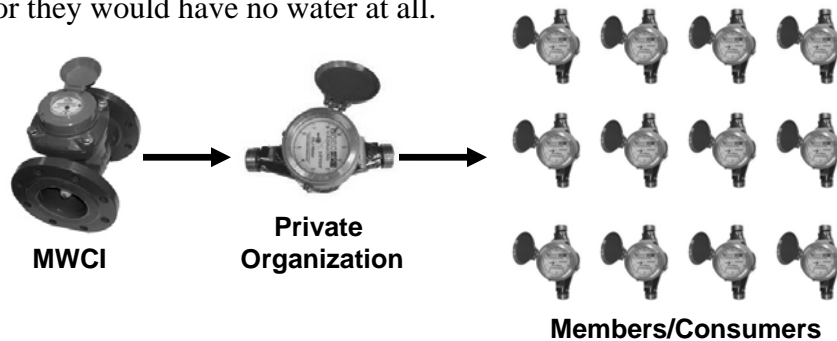
A mother meter or a main meter shall be installed to served the entire household members. This shall only be the responsibility of the concessionaire in the network

The partner association, as deemed by the concessionaire shall pay for the main meter and then take charged of the internal installation to served its household members.

The sum paid for the main meter plus the cost of internal installation is sum up and passed on the local consumers (the household members)

EXPLORE

Therefore, the one handling the private organization became the capitalist. The service oriented cause became profit oriented. Members are at the mercy of the one handling the pipe water system or they would have no water at all.



EDUCATE

To fully understand the system, the LUPON have decided to conduct an awareness program for the residents of Manggahan Floodway. The following systems of water distribution had been research and analyze to find out what is the right scheme of distribution suitable for the Manggahan Floodway residents. Almost 80% of the entire manggahan floodway residents were informed and made aware over the kind of system they prefer to choose.

- Group Taps**
- Bulk Selling**
- Public Faucets**
- Individual Connection**

EDUCATE

Association	Total No. of Houses
PFCI (Poor)	437
Lakas ng Mahihirap	45
PUNAI	37
UNEFBI	900
KABISIG NAI (Proper)	1,260
KABISIG NAI (Lower)	400
PAPCI 1	836
PAPCI 1 (Lower)	150
SITIO KABABAN	154
APRANAI (APRAS)	465
KAPIT - BISIG	600
GENESIS	1,122
DIMAGTA	168

Association	Total No. of Houses
Tanglaw ng Pangarap	50
KAMPI 1	50
KAMPI 2	50
APNEI (Exodus)	900
SAMAGTA	642
SAMASA	98
KAPIT - KAMAY	400
KAAKBAY	50
Total	8,814

Seek out the potential costumers. Inform them of the concern and identify issues that needs to be raised

EDUCATE

Under the Bulk Selling Scheme, only a single entity will be duly honored by the concessionaire, in the Philippines the Manila Water Company.

The said entity will be given full authority to manage and administer the water. This includes placing of tariff rates which may become uncontrollable.

EDUCATE

With the consensus of the majority turned into a single voice on Individual Connection, it was then decided by leaders of the People's Organization to meet with the private concessionaire to possibly discussed alteration of the previous scheme offered

After a long dialogue involving the MWSS Regulatory Office, the MWCI and L.U.P.O.N., it was finally resolved to favor both MWCI & the People of Manggahan Floodway



EDUCATE

AS A RESULT:

EVERY HOUSEHOLDS CONNECTED BUT LIMITED ONLY TO THOSE WHO CAN AFFORD THE SERVICE CONNECTION FEES

MWCI MAY SOMEHOW PROVIDE FUNDS FOR THE CAPITAL NEEDED BUT NOT FOR THE OPERATING EXPENSE. THEREFORE, THE WATER WILL BE TEMPORARILY MANAGE BY A STREET LEADER ELECT UNTIL SUCH TIME THAT IT CAN BE BUDGETED COMES THE NEXT RATE REBASSING PERIOD IN 2008.

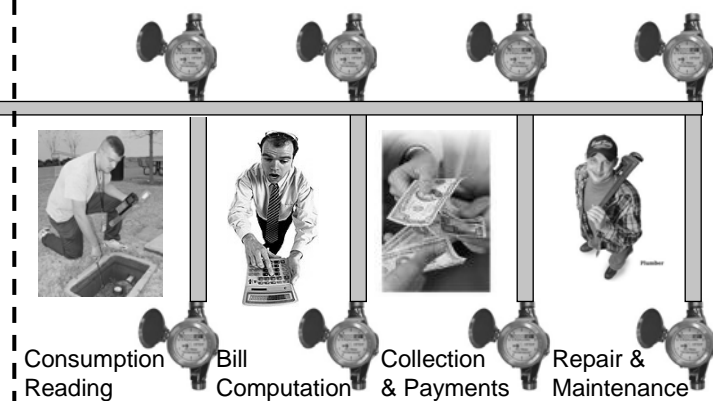
EMPOWER

CONCESSIONAIRE
(MWCI)

NETWORK RESPONSIBILTY

STREET LEADERS

1. Consumption Reading
2. Billing
3. Repair



EVALUATE

Bulk Selling scheme through street managed were only good for associations having less than 500 household members.

For Association with more than 500 household members, high risk of mismanagement and conflict of interest might occur. If this happens, it will result to more disconnection rather than connection

However, the interim solution of a street manage water scheme does not totally eliminates the problem but only minimizes the scope and effect.

And still, others who are not capable to pay even the minimum required amount for the service connection fees was left unserved

ENHANCE

- 1. With the given scheme, others still did not managed to be connected to the piped water system due to costly service connection fees (even if the service connection fees were offered a staggered payment scheme).**
- 2. Street Managed scheme did not totally addresses the problem of mismanagement. It only minimized the scope and effect**
- 3. Household still insist on Individual Connection. The concessionaire should shoulder the cost of connection and later assumes recovery through increasing tariff rates. This act will provide more connections, less risk from mismanagement since the payments go directly to Manila Water Company Inc.**

RATIONAL

People needs to be connected to piped water at a cost they can guarantee. Access to water must not be limited to those that can afford. It must be for all. It is not a matter of choice but of necessity.

It is not giving the people the water they want but the water they can understand.

To preserved it for the next generation, water must be first understood by the person who uses it.

THANK YOU

**LEAGUE OF UNITED PEOPLE'S ORGANIZATION NETWORK
(L.U.P.O.N)
OF MANGGAHAN FLOODWAY**