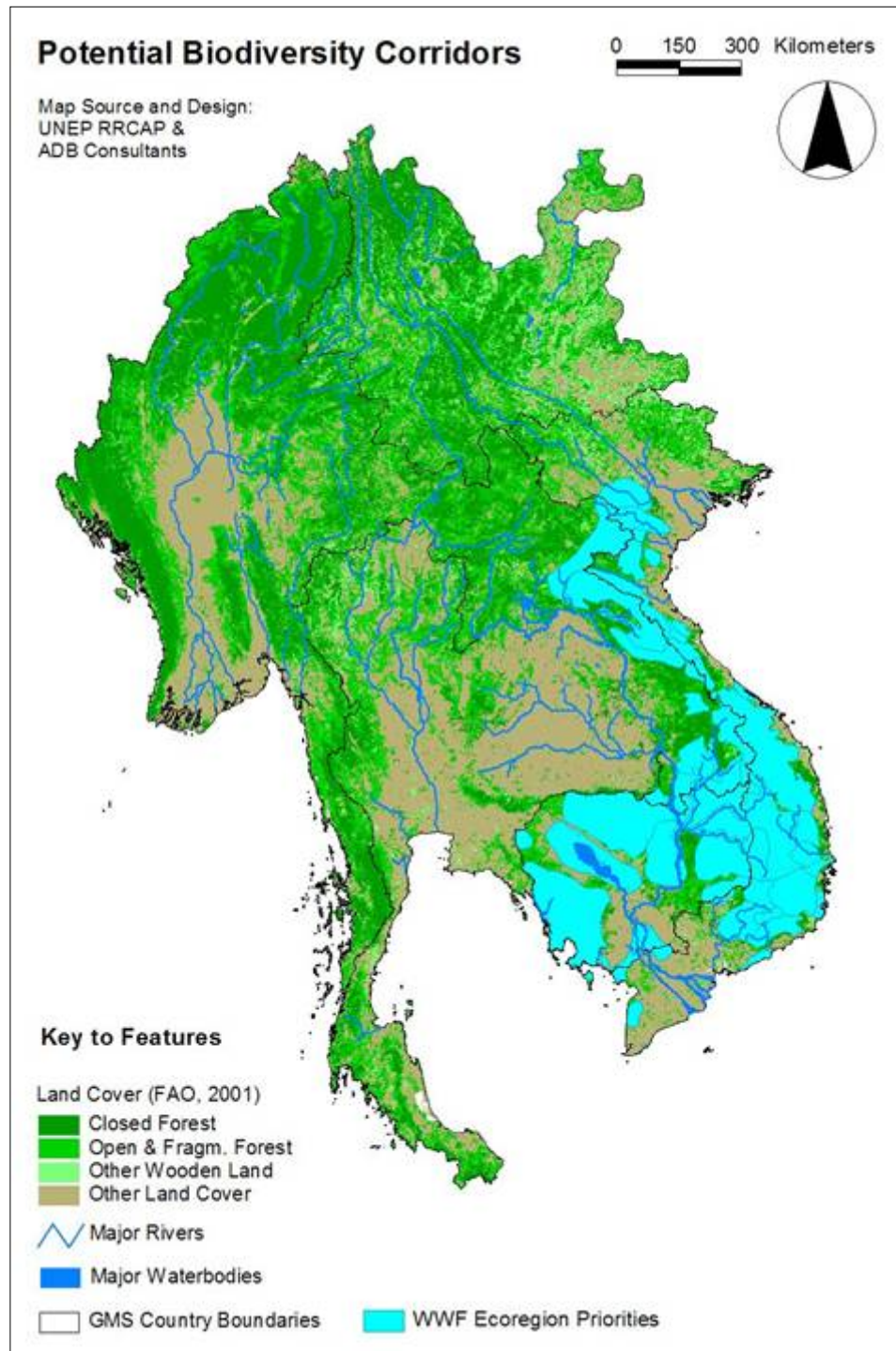


Annex 1: Map Overlays of Biodiversity Planning Initiatives in the GMS

1. WWF BIODIVERSITY VISION OF THE LOWER MEKONG ECOREGION COMPLEX

prioritized 26 terrestrial landscapes located in:

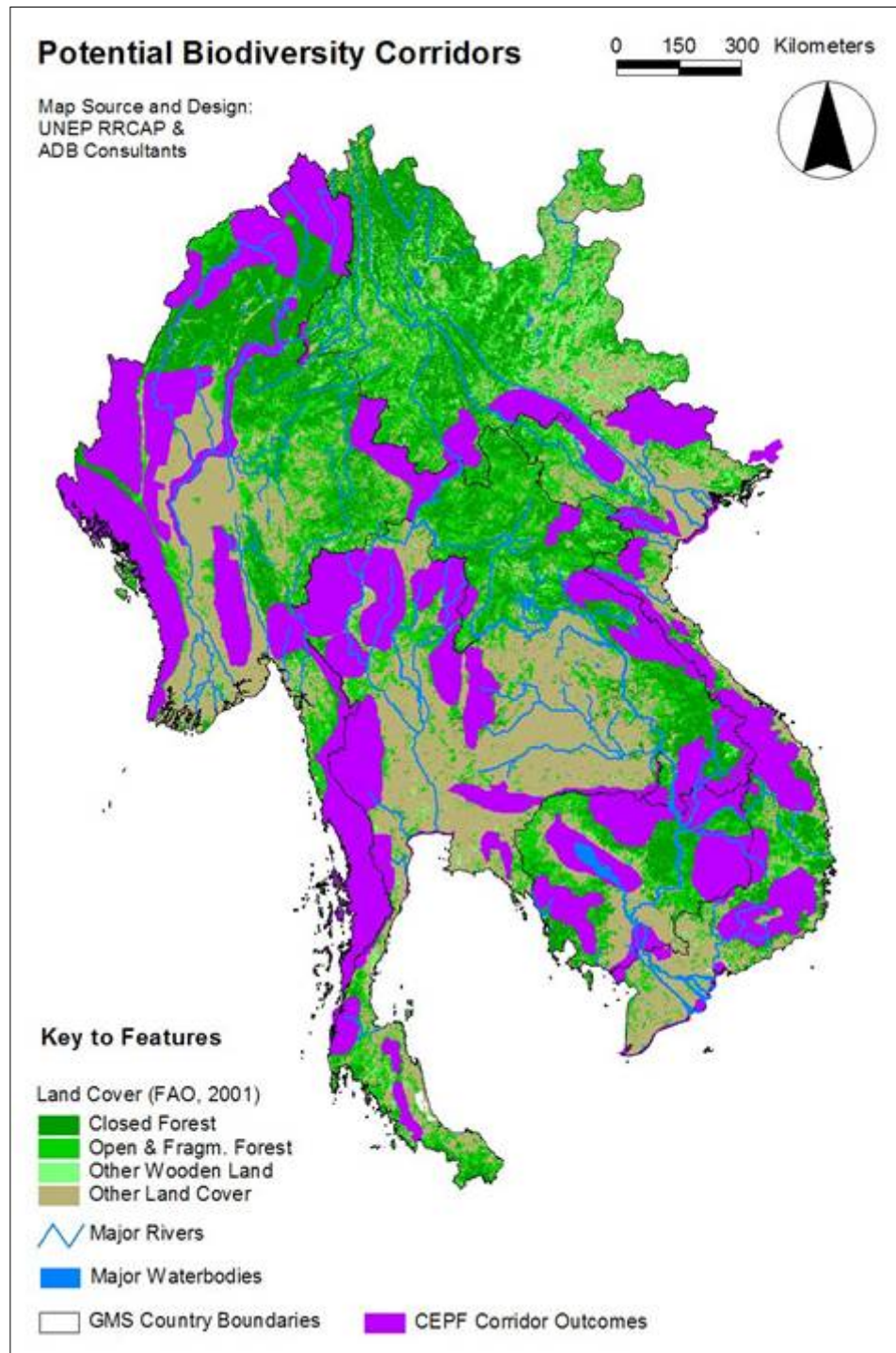
1. The Annamite Range Moist Forest
2. The Indochina Dry Forests
3. The Cardamom Mountains Moist Forests
4. The Northern Indochina Sub-Tropical Moist Forests
5. The Mekong River (entire catchment)



(Source: Towards a Vision for Biodiversity Conservation in the Forests of the Lower Mekong Ecoregion Complex, WWF-USA, 2001)

2. THE CRITICAL ECOSYSTEM PARTNERSHIP FUND (CEPF)

a joint initiative of Conservation International, GEF, Government of Japan, MacArthur Foundation and World Bank through a consultative process, CEPF identified 53 'corridor outcomes' for the Indochina region. These corridors also considered previous conservation planning outcomes, such as WWF's ecoregion conservation, BirdLife's IBAs etc.

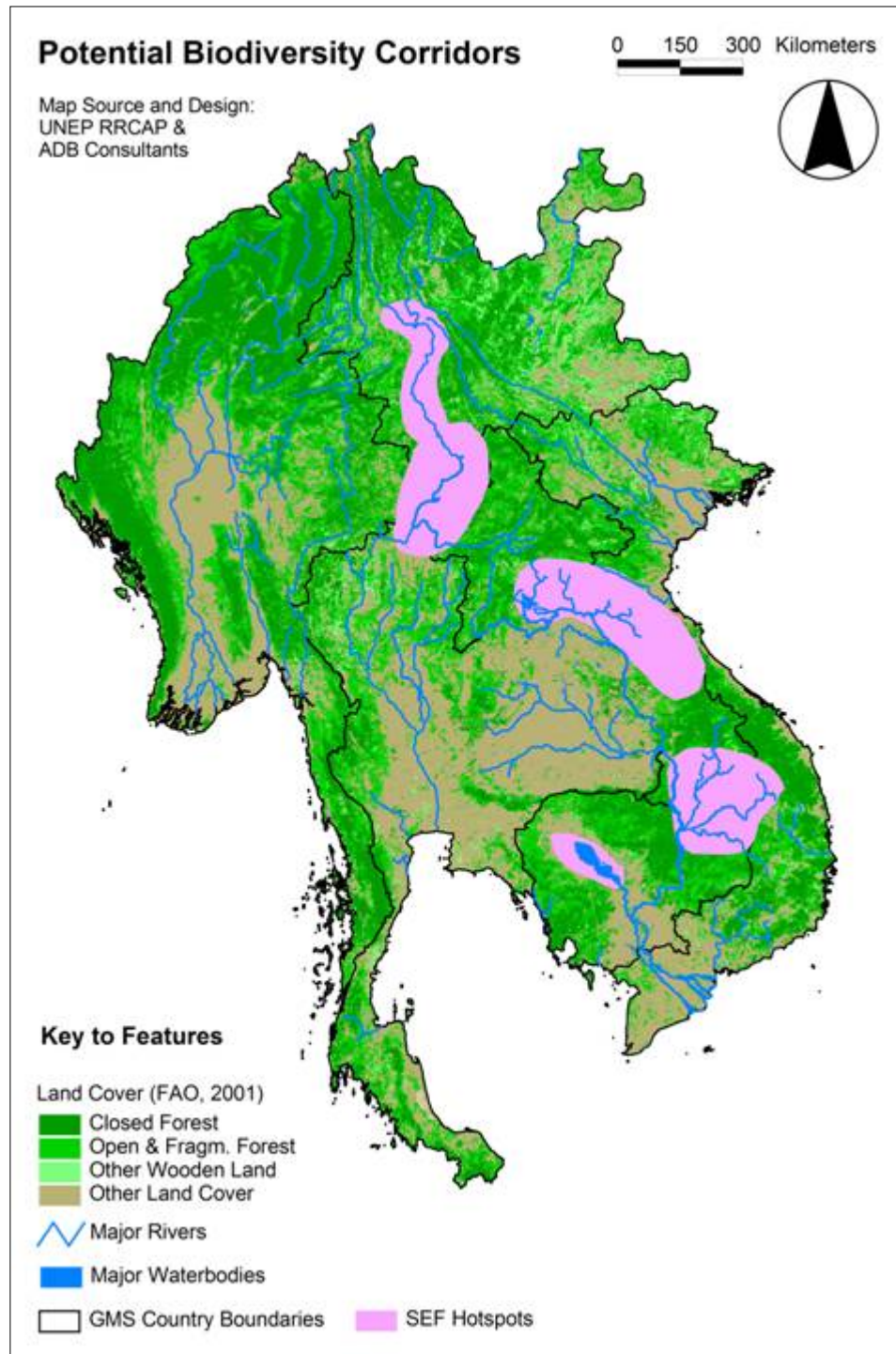


(Source: Draft Ecosystem Profile for the Indochina Region of the Indo-Burma Hotspot, 2004)

3. THE STRATEGIC ENVIRONMENTAL FRAMEWORK (SEF)

identified five hotspots (high value areas at high risk) as follows:

1. Upper Mekong (Lancang River, Yunnan – PRC)
2. Golden Quadrangle (Yunnan, Myanmar, Lao, Thailand)
3. Central GMS (Thailand, Lao, Vietnam)
4. Se San/Se Kong (Cambodia, Lao, Vietnam)
5. Tonle Sap (Cambodia)

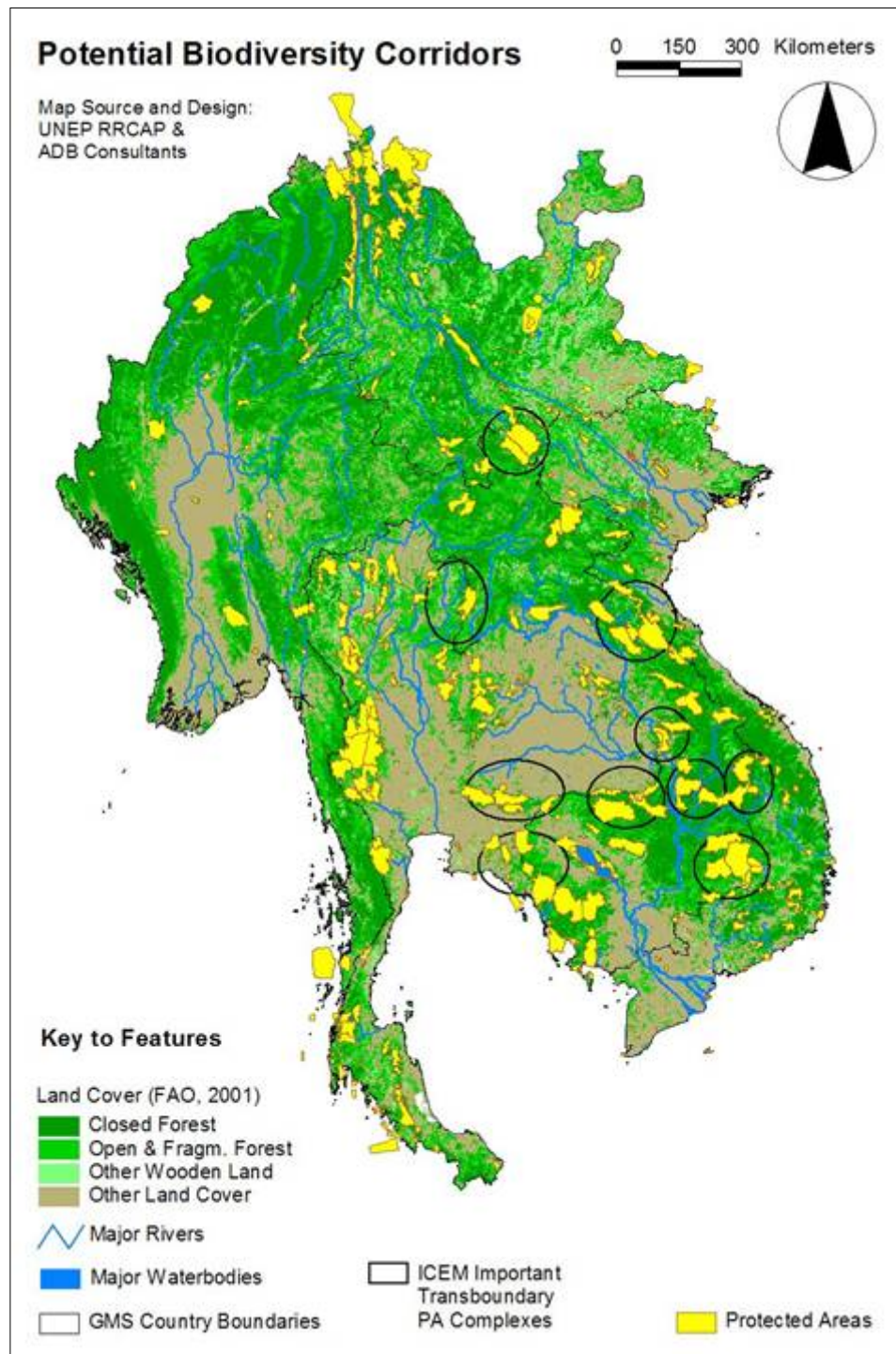


(Source: Strategic Environmental Framework for the Greater Mekong Subregion: Integrating Development and Environment in the Transport and Water Resource Sectors. Volume III: GMS Hotspot Profiles, March 2002)

4. TRANSBOUNDARY PROTECTED AREA COMPLEXES

The International Center for Environmental Management (ICEM) identified ten potential transboundary Protected Area complexes. These cover:

1. Cambodia
2. Laos PDR
3. Thailand and
4. Vietnam



(Source: Regional Report on Protected Areas and Development. Review of Protected Areas and Development in the Lower Mekong River Region, ICEM 2003)