



INTRODUCTION OF DROUGHT MANAGEMENT IN INDONESIA

Presented by,
Herman Idrus

Citarum River Basin Organization
Litbang@jasatirta2.co.id

Presentation For :
The 1st Thematic Workshop
on Water Allocation and Water Right

Hanoi - Vietnam
5 – 9 December 2005



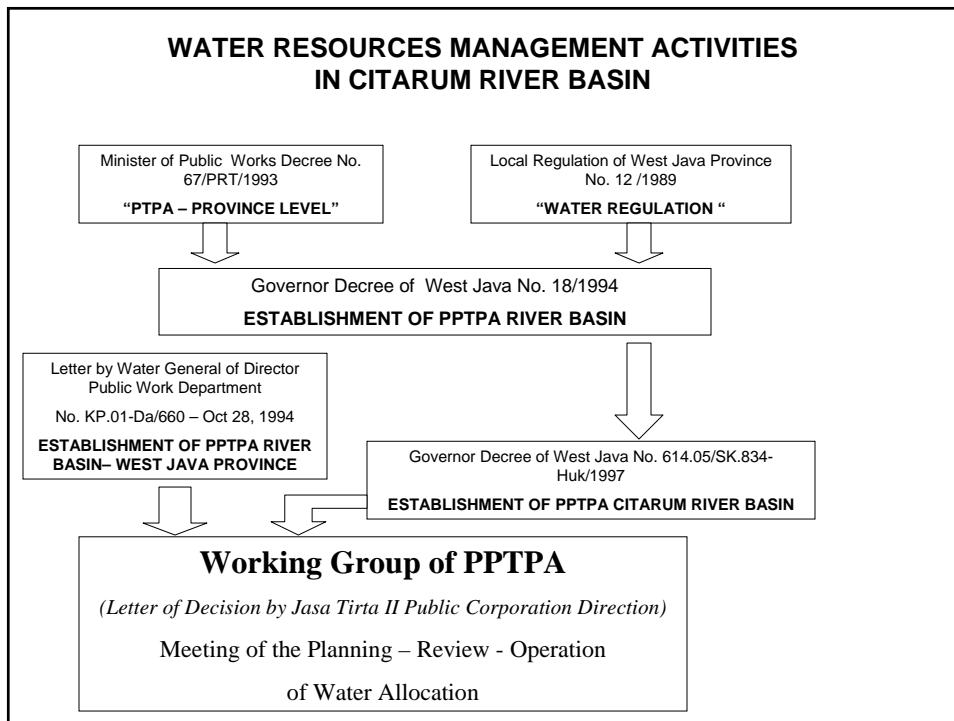
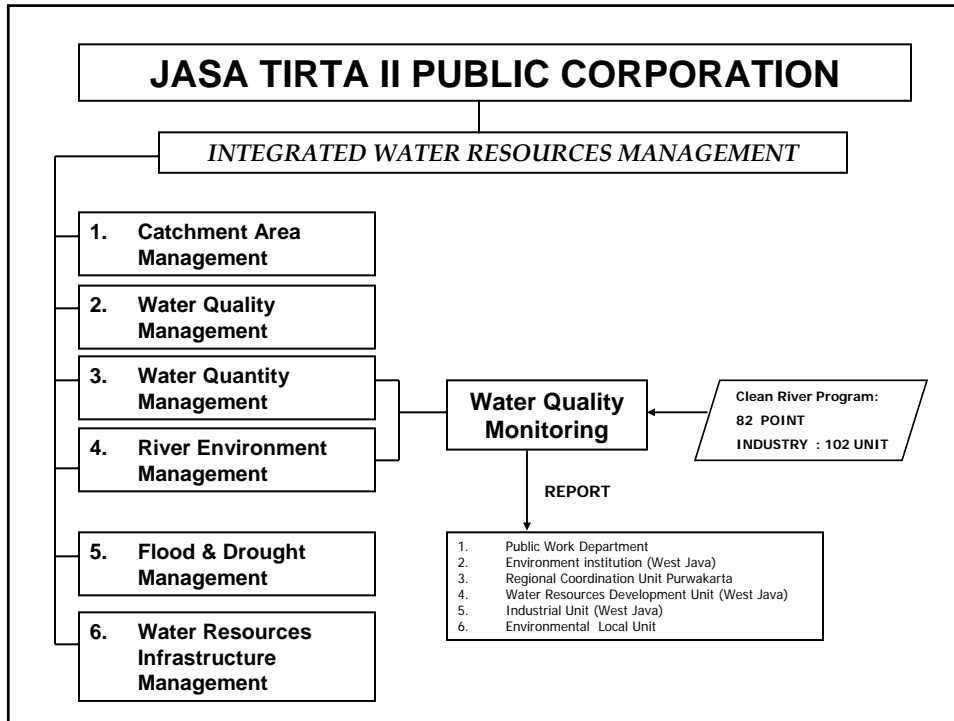
J A S A T I R T A II
PUBLIC CORPORATION



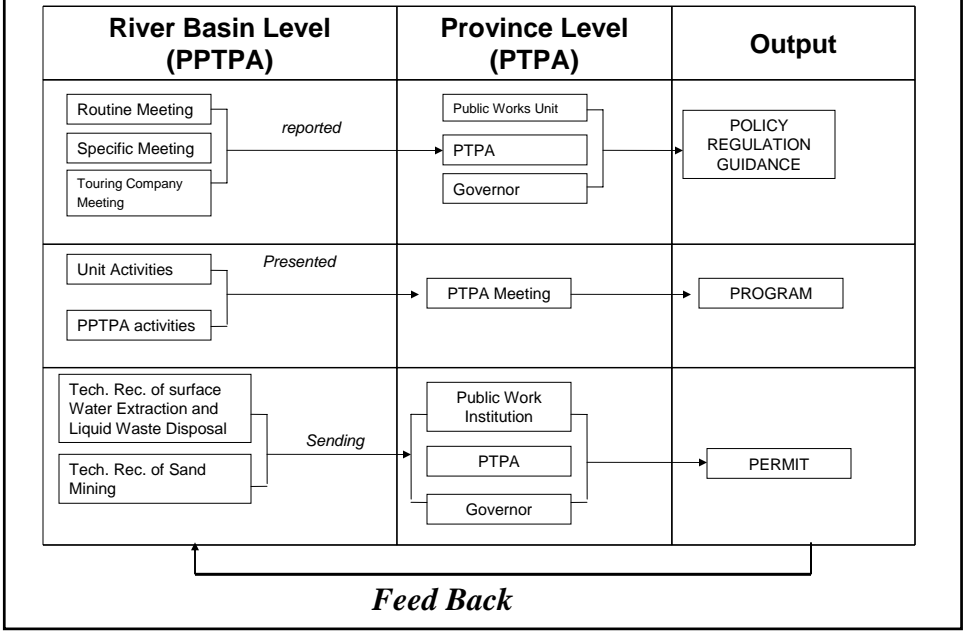
Experience of Drought Management



- Irrigation is the biggest demand of water it is about 90% of the total demand for two crops per year
- According to the Note for Jatiluhur (Ir. H. Djuanda) Reservoir Operation (Angoedi, 1960) total water demand in the downstream of the reservoir will be supplied during wet season 70% from local resources and 30% from the reservoir, and conversely, during dry season 30% from local resources and 70% from the reservoir.
- The committee is also prepares integrated reservoirs operation rule curve based on the equal sharing of the three reservoirs in term of water level and hydro electric power production.
- Water management includes: catchment area management, water quantity, water quality, river environment, flood and drought, and water resources infrastructures.
- They should not rampant to cut trees in the forest or illegal logging and extended agricultures activity in the slope land that will cause erosion in the catchment area and sedimentation in downstream reach
- The beneficiaries of water mostly are living in the downstream area that is why a mechanism of incentive from the downstream to upstream should be established.



**COORDINATION AMONG STAKEHOLDERS
IN THE CITARUM RIVER BASIN**



DROUGHT MANAGEMENT

BAMBANG HARGONO

Problems

- Irrigation committee has decided the cropping pattern and intensity, and determine that third planting will be dry crops, since water availability cannot be warranted.
- Farmers keep planting paddy expecting rainy season will last longer.
- When rainy season stops, the harvest fails.

Problems

- In limestone areas, rain also falls very heavily, but the water is gone all of a sudden.
- The water goes to sinkholes into underground rivers.
- People have to go deep and far to take it.

TRADITIONAL SOLUTION

- IN LOMBOK ISLAND,
 EMBUNG or small ponds, 100m by 100m is made to keep paddy fields irrigated for some weeks after ending of rainy season.
- The small ponds keep the moisture of the soil, and fill the domestic wells watered.

Institutional solution

- Water right,
- Water allocation,
- Water council
- Guidance on allocating water.