



## Social Monitoring Report

---

Project Number: 35289  
July 2010

### PRC: Sanjiang Plain Wetlands Protection Project

#### External Monitoring and Evaluation Report on Resettlement and Alternative livelihoods for Farmland-to-Forest Conversion

#### Luobei County No.1

This report has been submitted to ADB by the Heilongjiang Provincial Forestry Department and is made publicly available in accordance with ADB's public communications policy (2005). It does not necessarily reflect the views of ADB.

**Asian Development Bank**

---

Sanjiang Plain  
Wetlands Protection  
Project Loaned by ADB

External Monitoring & Evaluation Report on  
Resettlement and Alternative Livelihood of  
Farmland-Forest Conversion Project in Luobei  
County of Heilongjiang Province

( NO.1)

Heilongjiang Provincial Engineering Consultation Appraisal  
Center

December 2009

---

## Table of Contents

<b>1 Project Background .....</b>	<b>1</b>
<b>2 Monitoring Schedule, Process, Contents and Methods .....</b>	<b>3</b>
2.1 Monitoring Schedule.....	3
2.2 Monitoring Process.....	3
2.3 Monitoring Activities.....	4
2.4 Monitoring Methods .....	4
<b>3 Resettlement Implementation Agency .....</b>	<b>6</b>
3.1 Conditions of the Original Institution.....	6
3.2 Conditions of the Existing Institutions.....	8
3.3 Institutional Assessment .....	8
<b>4 Resettlement Policies .....</b>	<b>10</b>
4.1 Resettlement Policies.....	10
4.2 Evaluation of the Resettlement Policies and Compensation Standard.....	10
<b>5 Implementation Schedule.....</b>	<b>12</b>
5.1 Farmland-forest Conversion Progress.....	12
5.2 Farmland-forest Conversion Implementation Status of and Actual APs .....	12
<b>6 Resettlement.....</b>	<b>14</b>
6.1 Resettlement Process .....	14
6.2 Livelihood Rehabilitation Measures .....	18
6.3 Staff trainings.....	28
<b>7 Alternative Rehabilitation .....</b>	<b>33</b>
7.1 Statistics Analysis of Alternative Livelihood People .....	33
7.2 Original Livelihood Status .....	33
7.3 Altertative Livelihood Status after Farmland-forest Conversion .....	39
7.4 General Analysis of the Income and Expenditure of the staffs.....	56
<b>8 Consultation, Participation and Complaint and Appeal .....</b>	<b>58</b>
8.1 Participation and Consultation .....	58
8.2 Complaint and Appeal .....	59
<b>9 Conclusions.....</b>	<b>60</b>

---

## **1 Project Background**

Sanjiang Plain is one of the largest freshwater wetlands in China, also the habitat for waterfowls of global significance. In 1999, a concept paper of Sanjiang Plain Wetlands Protection Project and a PDFB proposal was put forward to Global Environmental Facility (GEF) by Chinese Government through Asian Development Bank (ADB). After a series of preparations, GEF approved the grant on February 8 2005; ADB approved the loan on March 14 2005. The total project funds is 55.55 million USD, among which ADB loan for 15 million USD, GEF grant for 12.14 million.

The project comprises four components, namely:

( 1 ) Watershed management : Including reforestation in the watershed where the nature reserves located, water conservation; improvement of water resources management at watershed-level, rehabilitation of the natural water quantity balance; development of water resources planning at watershed-level, and improvement of water resources management model at watershed level.

( 2 ) Improvement of nature reserve management: Including the improvement of the existing management planning and technical measures of the nature reserves, to eliminate the threats to the endangered species with global significance; to provide operational and monitoring models and recovery the ecological functions of the 6 NRs involved in the project; to recovery the wildlife of international significance on Sanjiang Plain Wetlands, especially the populations and the population size of the migratory birds; to eliminate environmental threats to the endangered species, to implement of laws and regulations relevant to wetland protection and reduce the over-exploitation of natural resources in the project areas.

( 3 ) Development of local alternative livelihood: Including the implementation of agro-forestry and non-timber forest products projects to help local residents increase their income continuously ; development and implementation of village development plan, support community development plan; help the nature reserve develop eco-industrial master plan, implement the relevant pilot project activities.

( 4 ) Strengthen capacity-building of wetland management: Including the strengthening the capacity of the nature reserves and government officials at all levels, enhance public awareness on wetlands, wildlife and biodiversity protection. If possible, special awareness trainings will be provided to women.

Watershed management involves converting farmland into forests, in which 4300 hectares of farmland are planned to be converted, the project is located in the 28 forest farms in 5 counties on the Sanjiang Plain of Heilongjiang Province, Luobei is one of farmland-forest conversion projects, involving a total of 5 forest farms in Luobei County. The project was officially mobilized in 2005, will complete in 2010 as planned, 1000 hectares of farmland are planned to be converted into forests. The external monitoring conducted the independent external monitoring on the resettlement and alternative livelihood of the APs in 5 forest farms in Luobei County. Most of the farmlands proposed to be converted are slope, due to the terrain causes, serious soil and earth erosion problems occurred, coupled with the use of pesticides, a serious impact was brought to the water resources downstream, flooding is likely to be occurred. Sloping fields with more than 25 degrees should be gradually converted to forests as regulated by Chinese Government since 1999. Moreover, the cultivated fields are just depending on weather, there are no irrigation and drainage facilities, they can not resist natural disasters, in normal times it can be still maintained,

however, maybe there will be even no harvest in the disaster years. After converting farmland into forests, forest vegetation can be restored, soil erosion will be under control, water sources are conserved, regional climate are improved, with biodiversity, the ecological environment will be greatly improved, which will promote the sustainable economic and social development.

## **2 Monitoring Schedule, Process, Contents and Methods**

### **2.1 Monitoring Schedule**

Under the entrustment of PMO of Sanjiang Plain Wetlands Protection Project (hereinafter referred to as PMO) and according to ADB requirements and project progress, our center has carried out the independent external monitoring of the resettlement and alternative livelihood work of the affected people (APs) by farmland-forest conversion activity in Luobei Wetlands Nature Reserve since September 25, 2009.

### **2.2 Monitoring Process**

From September 25-November 8, 2009, collection of basic materials and preparation for the monitoring (design questionnaire, develop work plan and collect relevant policies);

Field survey and data collection were conducted in farmlands-forest conversion site from November 9-11;

From November 10-11, 2009, panel discussions with affected staffs were conducted, 24 people presented the discussion, and the meetings were held in the meeting rooms of Yunshan and Nianlihe Forest Farm of Luobei Forestry Bureau.

From November 12-December 30, 2009, sorted out the data and developed external monitoring report.

### **2.3 Monitoring Activities**

- Monitor the institution, work arrangement and staffing status of the client and resettlement implementation agency, the capacity building and training activity of the resettlement agency; and compare with the resettlement plan framework (farmland-forest conversion) to evaluate its appropriateness.
- Investigate the policies on conversion of farmland into forest and alternative livelihood, to understand the key policies about the implementation of resettlement and compare it with the Resettlement Framework of conversion of farmland into forest to evaluate the appropriateness.
- Investigate the implementation progress of conversion farmland into forest, and compare it with the resettlement framework of farmland-forest conversion activities and the whole project progress, to analyze and evaluate the appropriateness;
- Survey on the implementation of alternative livelihood and income recovery plan for the APs;
- Baseline survey on the income, production and living standard recovery conditions of APs;
- Information disclosure
- Complain and appeal, public participation and negotiation.

### **2.4 Monitoring Methods**

The monitoring mainly adopts the methods like field survey, panel discussion, private interview, questionnaire, etc. The questionnaire survey rate of the APs is 21.2%.

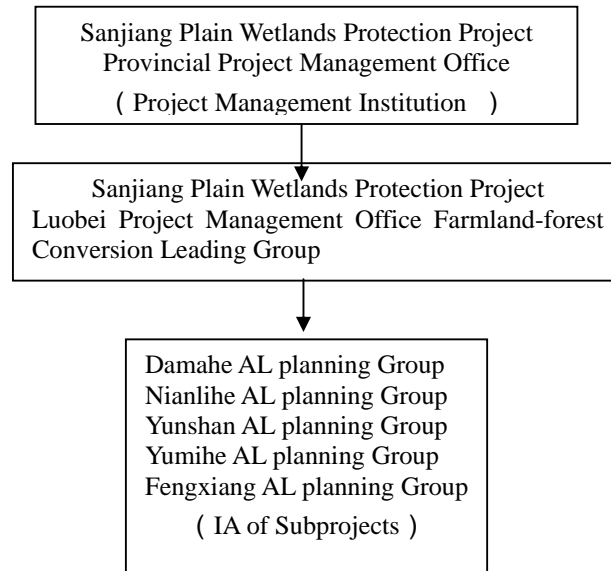
Among which, the site visit was mainly conducted in the farmland-forest conversion areas, the panel discussion was mainly focus on the report of the rehabilitation and alternative livelihood of APs by Luobei Forestry Bureau. The questionnaire was mainly to know the income and expenditure status of the APs before and after the forest restoration as well as their understandings on farmland conversion to forest.



### 3 Resettlement Implementation Agency

#### 3.1 Conditions of the Original Institution

##### 3.1.1 Branches of the Original Institution



##### 3.1.2 Duties and Responsibilities

The PMO was established in Heilongjiang Provincial Forestry Department (HPFD),It organized resettlement rehabilitation and social- economic survey involved in this project, developed resettlement policies in consultation with project counties; organized, coordinated the development of resettlement plan framework, led, coordinated and supervised the resettlement implementation and progress based on the project schedule. It organized and implemented internal monitoring, selected external monitoring and evaluation agency and coordinated with external monitoring and evaluation activities. It reviewed monitoring report; prepared and submitted progress reports to Heilongjiang Provincial Development and Reform Committee in a timely manner; and resolved problems and issues arose from implementation process.

Luobei Farmland-forest Conversion Leading Group of Sanjiang Plain Wetlands Protection

Project (leading group of sub-projects):

The leading group is headed by the county mayor, the group members include the major leaders from Forestry Bureau, Finance Bureau, Development and Reform Committee, Environmental Protection Bureau at county level. The leading group organizes and arranges the sub-projects' application, implements and coordinates relevant agencies during project implementation, approves resettlement policies, coordinates various conflicts during resettlement and monitors the resettlement progress and results.

Alternative livelihood planning group of forest farms( implementation agency):

Alternative livelihood planning groups located in forest farms are responsible for conducting the resettlement and socio-economic survey, participating in the preparation of resettlement plan, implementing alternative livelihood plan, organizing and implementing internal monitoring, cooperating external monitoring activities, preparing progress report and submitting it to the county project office in a timely manner, handling the conflicts and problems during the process of implementation of resettlement.

### 3.1.3 Staffing

The Staffing of the resettlement agency under the project is shown in Table 3-1. From the table, it can be seen that the staffs of the resettlement institution are entirely arranged and their qualifications are relatively high. There are 34 full-time staffs, the total number of staffs has reached 64 and a smooth information channel downward and upward is equipped.

**Table 3-1 Staffing of the Resettlement Agency under the Project**

Resettlement Agency	Full-time Staff(person)	Total Number of Staffs (person)	Qualification of Staff	Note
Provincial PMO	2	12	Public servants, Bachelor Degree, 12 persons	

Resettlement Agency	Full-time Staff(person)	Total Number of Staffs (person)	Qualification of Staff	Note
Luobei Farmland-forest Conversion Leading Group	2	6	Government Officials, Bachelor Degree, 4 persons	
Damahe Forest Farm Alternative Livelihood Mngement Office	5	9	Li Xianfang,Tian Xiaomin,Zhao Fujiang,Li Mingzeng,Wang Weijun,He Yongfu,Bao Cuizhi(female),Luo Zhenxia(female),Zhang Xin(female)	
Nianlihe Forest Farm Alternative Livelihood Mngement Office	6	10	Zhang Huanchen,Chen Yong,Jie Yufa,Guan Jibao,Wang Laichuan,Li Chunyu,Shao Hongl,Qi Fengjie(female),Zheng Longhong(female),Wang Weilan(female)	
Yunshan Forest Farm Alternative Livelihood Mngement Office	7	10	WangJihua,Li Mingjun,Guo Fenglin,Zhang Qiang,Sun Fulong,Zhao Jun,Wang Yuying,Luo Guiying(female),Sun Shumei(female),Li Shuhua(female)	
Yumihe Forest Farm Alternative Livelihood Mngement Office	8	9	Yang Tongmin,He Dewu,Ding Hejiang,Zhang Shijun,Zhou Zhanjun,Zhang Zhihou,Zuo Yumei(female),Tao Fengjuan(female),Wang Qingyun(female)	
Fengxiang Forest Farm Alternative Livelihood Mngement Office	4	8	Zhou Yubai,Geng Weizhong,Zhang Aiguo,Li Mingzeng,Zhang Shiping,Jiang Guanghe,Zu Binwen(female),WangShuhua(female)	
Total	34	64		

### 3.2 Conditions of the Existing Institutions

According to site visit and investigation, the current institutional arrangement, responsibilities and staffing of the Project.

### 3.3 Institutional Assessment

The functions of the resettlement agencies, the tasks, responsibilities and staffing under the project are clearly specified; various agencies are well equipped with telephone, fax machine, computer, vehicles and other equipments.

Most of the project staffs are the leaders of forest farms and trade unions, staff

representatives, they are familiar with local conditions, can represent the interests of staffs and have a certain degree of management ability and level of organization.

The project agencies have developed the project materials like alternative livelihood etc, which has ensured the smooth implementation of conversion farmland into the forest.

## **4 Resettlement Policies**

### **4.1 Resettlement Policies**

On the basis of the wide consultation with forest farms, APs on the recommendations and ideas of farmland-forest conversion and alternative livelihood by the resettlement agency(Luobei farmland-forest conversion leading group), and in accordance with the relevant national resettlement policies and the actual condition of each forest farm, Luobei Sanjiang Plain Wetlands Protection Project Resettlement and Alternative Livelihood Plan was developed and formally issued in April 2005. The key policies of the plans are as follows:

#### **4.1.1 General Principles of Farmland-forest Conversion**

The rehabilitations and alternative livelihood of the APs must be in accordance with the unified deployment, should be organized and conducted step by step. The rehabilitations and Alternative Livelihood Plan of the APs should be well arranged prior to the implementation of farmland-forest conversion.

#### **4.1.2 Rehabilitations and alternative livelihood of the APs**

- ① The APs can select working unit freely, the working units have the authority in choosing the staffs;
- ② The APs can earn for their own living;
- ③ Of the APs, who don't have the working unit to take-over, and are unwilling to earn for their own living, will be arranged by the forest farms.

### **4.2 Evaluation of the Resettlement Policies and Compensation Standard**

Through verification and analysis, it is considered that the relevant terms of Luobei

Sanjiang Plain Wetlands Protection Project Resettlement and Alternative Livelihood Plan of Farmland-forest Conversion were publicized in the form of notice and interpretation. All APs did not have any action of questioning the laws, regulations and policies adopted. Through monitoring, it is considered that the resettlement policies adopted by the resettlement work are appropriate.

## 5 Implementation Schedule

### 5.1 Farmland-forest Conversion Progress

**Table 5-1 Farmland-forest Conversion Progress**

Plan		Actual Impact					Percentage (%)
Forest Farm	Area of farmland to be converted ( mu )	Affected Villages/forest farms	Area of cultivated farmland ( mu )				
			Subtotal		Slope	wasteland	
Damahe	2865	Damahe	1110.0		1110.0		38.74%
Yumihe	4425	Yumihe	3643.5		3643.5		82.34%
Yunshan	3435	Yunshan	2689.5		2689.5		78.30%
Fengxiang	1140	Fengxiang	1966.5		1966.5		172.50%
Nianlihe	3135	Nianlihe	3640.5		3640.5		116.12%
Subtotal	15000		13050.0		13050.0		87.00%

Through the site visit, the above-mentioned 13050 mu of farmland has been converted into forest.

### 5.2 Farmland-forest Conversion Implementation Status of and Actual APs

**Table 5-2 Summary of Farmland-forest Conversion Implementation Status of and Actual APs**

County	Forest Farm	Farmland planned to be converted			Actual Impact							
		Area of farmland to be converted ( ha )	Area of farmland to be converted (mu)	Total No of staffs	Affected village s/forest farms	Area of farmland to be converted ( mu )				APs		
						Subtotal	Dry land	Slope	Waste land	Regular staffs	Temporary	outsourc e
Luohe	Damahe	191	2865	120	Damahe	1110.0		1110.0		14		
	Yumihe	295	4425	142	Yumih e	3643.5		3643.5		27		

c o u n t y	Forest Farm	Farmland planned to be converted			Actual Impact							
		Area of farmland to be converted ( ha )	Area of farmland to be converted (mu)	Total No of staffs	Affected village s/forest farms	Area of farmland to be converted ( mu )				APs		
						Subtotal	Dry land	Slope	Waste land	Regular staffs	Temporary	outsourc e
i	Yushan	229	3435	124	Yushan	2689.5		2689.5		26		
	Fengxia	76	1140	52	Fengxia	1966.5		1966.5		18		
	Nianlihe	209	3135	135	Nianlihe	3640.5		3640.5		28		
	<b>Total</b>	<b>1000</b>	<b>15000</b>	<b>573</b>		13050		13050		113		



## 6 Resettlement

### 6.1 Resettlement Process

Through investigation, we know, as of October 2009 a total area of 13050 mu (870ha) of farmland has been converted under forest restoration project, as these land is managed by forest farms, the main APs are the regular staffs of the forest farms, 113 people were affected, including 28 female workers, accounting for 23% of the APs. The basic condition of the resettlers is summarized in Table 6-1. As the forest farms are self-financing units, the livelihood of APs was re-arranged within the forest farms according to their local resources and employment capacity, and to ensure that their living standard not decrease. Meanwhile, in order to enable the APs to quickly adapt to the new positions, the capacity building like technical training and studies were provided to the APs in accordance with the institutional development requirements of the Forestry Bureau.

**Table 6-1 Summary of Basic Condition of APs**

No.	Name of Forest Farm	Name of APs	Gender	Age	Time for Farmland-forest conversion	No of farmland to be ( mu )	Type of APs
1	Damahe	He Yongfu	Male	44	2006	120.0	Regular staff
2	Damahe	He Yonglin	Male	46	2006	195.0	Regular staff
3	Damahe	Xia Peihai	Male	41	2006	48.0	Regular staff
4	Damahe	Yang Zhanwen	Male	41	2006	117.0	Regular staff
5	Damahe	Wang Weishan	Male	46	2006	34.5	Regular staff
6	Damahe	Peng Gang	Male	39	2006	16.5	Regular staff
7	Damahe	Chu Hongxing	Male	33	2006	10.5	Regular staff
8	Damahe	Yang Zhanxi	Male	36	2006	16.5	Regular staff
9	Damahe	Luo Zhenxia	Female	33	2006	27.0	Regular staff
10	Damahe	Wang Liuzhang	Male	52	2006	150.0	Regular staff
11	Damahe	Zhao Zigang	Male	40	2006	45.0	Regular staff
12	Damahe	Qin Yulan	Female	47	2007	222.0	Regular staff

No.	Name of Forest Farm	Name of APs	Gender	Age	Time for Farmland-forest conversion	No of farmland to be ( mu )	Type of APs
			e				
13	Damahe	Quan Xiuyun	Female	44	2007	87.0	Regular staff
14	Damahe	Zhao Chunrong	Female	39	2007	21.0	Regular staff
<b>Damahe subtotal</b>		14				1110	
15	Fengxiang	Tan Xingming	Male	55	2006	157.5	Regular staff
16	Fengxiang	Liu Jiang	Male	46	2006	168.0	Regular staff
17	Fengxiang	Zhang Aijun	Male	46	2006	94.5	Regular staff
18	Fengxiang	Liu Qinglin	Male	46	2006	63.0	Regular staff
19	Fengxiang	Cui Zhongjiang	Male	46	2006	97.5	Regular staff
20	Fengxiang	Guan Shiyong	Female	42	2006	75.0	Regular staff
21	Fengxiang	Guan Shijie	Female	50	2006	103.5	Regular staff
22	Fengxiang	Hu Qin	Female	45	2006	76.5	Regular staff
23	Fengxiang	Jiang Shuyun	Female	50	2006	54.0	Regular staff
					2006	13.5	
24	Fengxiang	Li Hai	Male	55	2007	61.5	Regular staff
25	Fengxiang	Long Jiang	Male	46	2007	99.0	Regular staff
26	Fengxiang	Liu Xinhua	Male	46	2007	42.0	Regular staff
27	Fengxiang	Liu Xiang	Female	45	2007	121.5	Regular staff
28	Fengxiang	Jiang Guangzhen g	Male	43	2007	96.0	Regular staff
29	Fengxiang	Zhou Baoguo	Male	55	2008	54.0	Regular staff
30	Fengxiang	Wang Shuhua	Female	46	2008	73.5	Regular staff
31	Fengxiang	Bao Jinliang	Male	46	2008	48.0	Regular staff
32	Fengxiang	Wen Yuxia	Female	45	2008	70.5	Regular staff
					2008	40.5	
<b>Fengxiang Subtotal</b>		18				1609.5	
33	Nianlihe	Ma Jia	Female	43	2006	225.0	Regular staff
34	Nianlihe	Liu Debin	Male	40	2006	59.0	Regular staff
35	Nianlihe	Ding Guoqiang	Male	38	2006	330.0	Regular staff
36	Nianlihe	Guo Chunxiang	Male	49	2006	53.0	Regular staff
37	Nianlihe	Wang Laichuan	Male	43	2006	142.0	Regular staff
38	Nianlihe	Wang Weixiang	Female	42	2006	27.0	Regular staff
39	Nianlihe	Zheng Bin	Male	43	2006	127.0	Regular staff

No.	Name of Forest Farm	Name of APs	Gender	Age	Time for Farmland-forest conversion	No of farmland to be ( mu )	Type of APs
40	Nianlihe	Shao Yongfu	Male	55	2006	80.0	Regular staff
41	Nianlihe	Liu Dequan	Male	46	2006	267.0	Regular staff
42	Nianlihe	Yuan Zhanxin	Male	46	2006	80.0	Regular staff
43	Nianlihe	Gao Binzhen	Male	39	2006	25.0	Regular staff
44	Nianlihe	Zhang Dunhua	Female	41	2006	94.0	Regular staff
45	Nianlihe	Yang Guiquan	Male	39	2006	66.0	Regular staff
46	Nianlihe	Fu Hai	Male	29	2006	92.0	Regular staff
47	Nianlihe	Li Qiang	Male	35	2007	150.0	Regular staff
48	Nianlihe	Du Quan	Male	38	2007	97.0	Regular staff
49	Nianlihe	Wang Weilan	Female	37	2007	13.0	Regular staff
50	Nianlihe	Qi Fengjie	Female	46	2007	53.0	Regular staff
51	Nianlihe	Zheng Longhong	Female	30	2007	80.0	Regular staff
52	Nianlihe	Shao Hongli	Male	31	2007	130.0	Regular staff
53	Nianlihe	Li Hongsen	Male	55	2007	227.0	Regular staff
54	Nianlihe	Zhou Qianbing	Male	35	2008	39.0	Regular staff
55	Nianlihe	Liu Yukun	Male	38	2008	33.0	Regular staff
56	Nianlihe	Yuan Zhantian	Male	31	2008	14.0	Regular staff
57	Nianlihe	Liu Delin	Male	46	2008	70.0	Regular staff
58	Nianlihe	Li Chuanshun	Male	45	2008	68.0	Regular staff
59	Nianlihe	Han Baorong	Female	30	2008	76.0	Regular staff
60	Nianlihe	Geng Zhenguo	Male	42	2008	150.0	Regular staff
<b>Nianlihe subtotal</b>		28				2867	
61	Yumihe	Wang Qingyun	Female	40	2006	246.0	Regular staff
62	Yumihe	Tao Fengjuan	Female	30	2006	55.5	Regular staff
63	Yumihe	Zhou Zhankun	Male	33	2006	15.0	Regular staff
	Yumihe				2006	63.0	Regular staff
64	Yumihe	Wang Zhenwei	Male	34	2006	7.5	Regular staff
	Yumihe				2006	36.0	Regular staff
65	Yumihe	Zou Xiang	Female	47	2006	19.5	Regular staff
66	Yumihe	Wang Guobin	Male	47	2006	82.5	Regular staff
67	Yumihe	Wang Chunzeng	Male	46	2006	60.0	Regular staff

No.	Name of Forest Farm	Name of APs	Gender	Age	Time for Farmland-forest conversion	No of farmland to be ( mu )	Type of APs
68	Yumihe	Nv Jingyun	Male	50	2006	240.0	Regular staff
69	Yumihe	Yu Yongsheng	Male	30	2006	232.5	Regular staff
70	Yumihe	Wang Guomin	Male	43	2006	114.0	Regular staff
71	Yumihe	Gao Yanchen	Male	47	2006	48.0	Regular staff
					2006	99.0	
72	Yumihe	Wang Yinshan	Male	34	2006	63.0	Regular staff
					2006	67.5	
73	Yumihe	Han Zhigang	Male	32	2006	40.5	Regular staff
					2006	49.5	
74	Yumihe	Zhang Xikun	Male	46	2006	150.0	Regular staff
75	Yumihe	Jiang Jiangui	Male	35	2007	124.5	Regular staff
76	Yumihe	Cong Yajun	Male	46	2007	114.0	Regular staff
77	Yumihe	Lv Xiuye	Male	41	2007	115.5	Regular staff
78	Yumihe	Zhang Qingguo	Male	33	2007	82.5	Regular staff
79	Yumihe	Xou Jinwei	Male	28	2007	169.5	Regular staff
80	Yumihe	Han Minqiang	Male	36	2007	51.0	Regular staff
81	Yumihe	Zhang Shantian	Male	40	2007	64.5	Regular staff
					2007	37.5	
82	Yumihe	Han Fatian	Male	47	2008	85.5	Regular staff
83	Yumihe	Wang Guobin	Male	46	2008	81.0	Regular staff
84	Yumihe	Jiang Jianfu	Male	50	2008	96.0	Regular staff
85	Yumihe	Lin Shuhua	Female	30	2008	48.0	Regular staff
86	Yumihe	Du Zhenxu	Male	43	2008	31.5	Regular staff
87	Yumihe	Han Minsheng	Male	47	2008	124.5	Regular staff
<b>Yumihe subtotal</b>		27				2914.5	
88	Yunshan	Liu Guiai	Female	47	2006	4.5	Regular staff
89	Yunshan	Shi Shude	Male	45	2006	4.5	Regular staff
90	Yunshan	Liu Zhonglie	Male	38	2006	70.5	Regular staff
91	Yunshan	Wang Guozhen	Female	42	2006	33.0	Regular staff
92	Yunshan	Sun Shumei	Female	38	2006	109.5	Regular staff
93	Yunshan	Zhang Shuyun	Female	47	2006	46.5	Regular staff
94	Yunshan	Song Changtao	Male	39	2006	225.0	Regular staff
95	Yunshan	Li Dejiang	Male	38	2006	51.0	Regular staff

No.	Name of Forest Farm	Name of APs	Gender	Age	Time for Farmland-forest conversion	No of farmland to be ( mu )	Type of APs
96	Yunshan	Zhao Jiang	Male	39	2006	91.5	Regular staff
97	Yunshan	Wang Zhongjun	Male	50	2006	169.5	Regular staff
98	Yunshan	Pang Zhenlai	Male	48	2006	21.0	Regular staff
99	Yunshan	Wang Yuying	Male	53	2006	84.0	Regular staff
100	Yunshan	Zhao Meihua	Female	48	2006	189.0	Regular staff
101	Yunshan	Luo Guiying	Female	47	2006	123.0	Regular staff
102	Yunshan	Zhou Shun	Male	45	2006	105.0	Regular staff
103	Yunshan	Zhou Quan	Male	38	2006	100.5	Regular staff
104	Yunshan	Li Long	Male	43	2006	55.5	Regular staff
105	Yunshan	Li Chun	Male	42	2006	78.0	Regular staff
106	Yunshan	Jin Guangxi	Male	33	2007	51.0	Regular staff
107	Yunshan	Chen Baoguo	Male	49	2007	60.0	Regular staff
108	Yunshan	Cheng Jun	Male	32	2007	25.5	Regular staff
109	Yunshan	Cheng Gang	Male	34	2007	43.5	Regular staff
110	Yunshan	Li Dexi	Male	47	2007	94.5	Regular staff
111	Yunshan	Sun Fulong	Male	41	2007	166.0	Regular staff
112	Yunshan	Zhou Jiaqi	Male	38	2008	121.5	Regular staff
113	Yunshan	Piao Mingshun	Male	45	2008	99.0	Regular staff
					2008	16.5	
					2008	19.5	
					2008	15.0	
					2008	25.5	
<b>Yunshan Subtotal</b>		26				2299	
<b>Total</b>		113				10080	

## 6.2 Livelihood Rehabilitation Measures

The farmlands to be converted are mainly hilly slopes where the soil erosion is serious due to the gradient landscape, resulting in weakening soil fertility and low yield and quality of crop products. Besides, these farmlands are irrigated purely by rainfall, planted with low-value crops such as corn and bean that can generate little revenue. These farmlands have no irrigation system and are planted by individual farmers without using scientific method to survive natural disasters. In good years, the yield might be enough, though in

bad years, the farmers may suffer losses, even no gains. After deducting costs, the surplus of normal farmland in average years is 100 RMB/mu, and that of barren farmlands is even less, down to 50 RMB/mu. Therefore, the living condition of the affected persons working on these farmlands will actually be improved by converting farmland to forest.

Since 2005, the Luobei Forestry Bureau has started to resettle staffs to implement livelihood alternatives. Apart from the 54 persons resettled by the Luobei Forestry Bureau (in positions like forest protection, fire fighting, logistics), other implementation agencies (IAs) have resettled 22 persons in forestation production, 20 persons in planting on re-allocated farmlands, 5 persons in planting economic crops, and 12 persons in commercial services and labor services.

1) Public forest management and protection, fire fighting, logistics (54 persons)

The responsibility of these staffs is to manage and protect the key national public forests. Monthly payment will be 650 RMB per capita, and the annual income is 7800 RMB per capita. As per the Sanjiang Plain Wetlands Protection Project Agreement (SPWPPA), low crops can be interplanted on restored forest land, hence the staffs can, in the context of not affecting their routine works, increase their income by RMB 3,000 to 4,000 through growing wood ears and mushrooms under trees and collecting wild fruits.

2) Forestation production (22 persons)

Staffs employed in forestation production shall work in forestation for 25 days, 30 days for sickle fostering, 15 days for young trees treatment, 100 days for timber production, a total of 170 days annually. Daily salary shall be 30 RMB and annual income shall be 5,100 RMB per capita. In addition, the staffs can also do fire fighting works and collect wild fruits to make an extra income of around RMB 3,000 to 4,000.

3) Re-allocation of farmlands (20 persons)

Quality farmlands due the termination of contracting will be reallocated to some affected persons by 3-4 ha each, which will produce an annual yield of RMB 19,200 and a net income of RMB 6,000 after deducting the cost of RMB 13,200. And an additional revenue of RMB 3,000 to 4,000 per capita can be made by collecting wild fruits in the spare time.

4) Planting economic crops (2 persons)

Each person can plant 2500 sections of wood ear. Each section can produce wood ear 0.3 jin (500g) to make a gross output of 750jin. At a market price of 30 RMB per jin, the yield will be RMB 22,500 with a net income of RMB 15,000 after deducting the cost of RMB 7,500. As the growing period is 3 years, the annual income shall be RMB 5,000 per capita. And additional revenue of RMB 3,000 to 4,000 per capita can be made by collecting wild fruits in the spare time.

5) Livestock breed (3 persons)

Each cattle-breeding staff shall feed 10 cattles to make an annual income of RMB 8,000 to 10,000 at RMB 800 to 1,000 each. Each pig-breeding staff shall feed 2 sows, producing 4 piglings annually. 20 piglings shall generate a net income of RMB 3,000 and 20 grown pigs shall generate RMB 6,000, to make a total of RMB 9,000.

6) Commercial services and labor services (12 persons)

Commercial services mainly include restaurants and food stores with an annual income of RMB 8,000 to 10,000 per capita. Labor service will be at the open graphite mine, with a monthly income of RMB 1,000 and an annual income of RMB 9,000 to 10,000 by 9 to 10 months per year.

Currently all the APs have been resettled, as detailed in Table 6-2.

**Table 6-2 Summary of Rehabilitation Status of APs**

No	Name of forest farms	Name of APs	Gender	Age	No. of Farmland to be restored ( mu )	Type of APs	Alternative Rehabilitation mode
1	Damahe	He Yongfu	Male	44	120.0	Regular staff	forestation production
2	Damahe	He Yonglin	Male	46	195.0	Regular staff	forestation production
3	Damahe	Xia Peihai	Male	41	48.0	Regular staff	forestation production
4	Damahe	Yang Zhanwen	Male	41	117.0	Regular staff	forestation production
5	Damahe	Wang Weishan	Male	46	34.5	Regular staff	Management& protection
6	Damahe	Peng Gang	Male	39	16.5	Regular staff	Management& protection
7	Damahe	Chu Hongxing	Male	33	10.5	Regular staff	catering
8	Damahe	Yang Zhanxi	Male	36	16.5	Regular staff	forestation production
9	Damahe	Luo Zhenxia	Female	33	27.0	Regular staff	forestation production
10	Damahe	Wang Liuzhang	Male	52	150.0	Regular staff	forestation production
11	Damahe	Zhao Zigang	Male	40	45.0	Regular staff	Management& protection
12	Damahe	Qin Yulan	Female	47	222.0	Regular staff	forestation production
13	Damahe	Quan Xiuyun	Female	44	87.0	Regular staff	Management& protection
14	Damahe	Zhao Chunrong	Female	39	21.0	Regular staff	Management& protection
Damahe subtotal		14	10 , 4		1110		
15	Feng Xiang	Tan Xingming	Male	55	157.5	Regular staff	Re-allocation of farmland
16	Feng Xiang	Liu Jiang	Male	46	168.0	Regular staff	Re-allocation of farmland
17	Feng Xiang	Zhang Aijun	Male	46	94.5	Regular staff	Re-allocation of farmland



No	Name of forest farms	Name of APs	Gender	Age	No. of Farmland to be restored ( mu )	Type of APs	Alternative Rehabilitation mode
18	Feng Xiang	Liu Qinglin	Male	46	63.0	Regular staff	forestation production
19	Feng Xiang	Cui Zhongjiang	Male	46	97.5	Regular staff	Re-allocation of farmland
20	Feng Xiang	Guan Shiyong	Female	42	75.0	Regular staff	Re-allocation of farmland
21	Feng Xiang	Guan Shijie	Female	50	103.5	Regular staff	Re-allocation of farmland
22	Feng Xiang	Hu Qin	Female	45	76.5	Regular staff	Re-allocation of farmland
23	Feng Xiang	Jiang Shuyun	Female	50	54.0 13.5	Regular staff	Re-allocation of farmland
24	Feng Xiang	Li Hai	Male	55	61.5	Regular staff	Re-allocation of farmland
25	Feng Xiang	Long Jiang	Male	46	99.0	Regular staff	Re-allocation of farmland
26	Feng Xiang	Liu Xinhua	Male	46	42.0	Regular staff	Business
27	Feng Xiang	Liu Xiang	Female	45	121.5	Regular staff	forestation production
28	Feng Xiang	Jiang Guangzheng	Male	43	96.0	Regular staff	Re-allocation of farmland
29	Feng Xiang	Zhou Baoguo	Male	55	54.0	Regular staff	Re-allocation of farmland
30	Feng Xiang	Wang Shuhua	Female	46	73.5	Regular staff	Re-allocation of farmland
31	Feng Xiang	Bao Jinliang	Male	46	48.0	Regular staff	forestation production
32	Feng Xiang	Wen Yuxia	Female	45	70.5 40.5	Regular staff	Re-allocation of farmland
Fengxiang subtotal		Feng Xiang	11 , 7		1609.5	Regular staff	
33	Nianlihe	Ma Jia	Female	43	225.0	Regular staff	Management& protection
34	Nianlihe	Liu Debin	Male	40	59.0	Regular staff	Management& protection
35	Nianlihe	Ding Guoqiang	Male	38	330.0	Regular staff	Management&

No	Name of forest farms	Name of APs	Gender	Age	No. of Farmland to be restored ( mu )	Type of APs	Alternative Rehabilitation mode
							protection
36	Nianlihe	Guo Chunxiang	Male	49	53.0	Regular staff	Management& protection
37	Nianlihe	Wang Laichuan	Male	43	142.0	Regular staff	Management& protection
38	Nianlihe	Wang Weixiang	Female	42	27.0	Regular staff	Pigs breeding
39	Nianlihe	Zheng Bin	Male	43	127.0	Regular staff	Management& protection
40	Nianlihe	Shao Yongfu	Male	55	80.0	Regular staff	Management& protection
41	Nianlihe	Liu Dequan	Male	46	267.0	Regular staff	Management& protection
42	Nianlihe	Yuan Zhanxin	Male	46	80.0	Regular staff	Cattle breeding
43	Nianlihe	Gao Bingzhen	Male	39	25.0	Regular staff	forestation production
44	Nianlihe	Zhang Dunhua	Female	41	94.0	Regular staff	Pigs breeding
45	Nianlihe	Yang Guiquan	Male	39	66.0	Regular staff	Management& protection
46	Nianlihe	Fu Hai	Male	29	92.0	Regular staff	Management& protection
47	Nianlihe	Li Qiang	Male	35	150.0	Regular staff	forestation production
48	Nianlihe	Du Quan	Male	38	97.0	Regular staff	Management& protection
49	Nianlihe	Wang Weilan	Female	37	13.0	Regular staff	Management& protection
50	Nianlihe	Qi Fengjie	Female	46	53.0	Regular staff	Management& protection
51	Nianlihe	Zheng Longhong	Female	30	80.0	Regular staff	Management& protection
52	Nianlihe	Shao Hongli	Male	31	130.0	Regular staff	Management& protection
53	Nianlihe	Li Hongsen	Male	55	227.0	Regular staff	Management& protection

No	Name of forest farms	Name of APs	Gender	Age	No. of Farmland to be restored ( mu )	Type of APs	Alternative Rehabilitation mode
54	Nianlihe	Zhou Qianbing	Male	35	39.0	Regular staff	Management& protection
55	Nianlihe	Liu Yukun	Male	38	33.0	Regular staff	Wood ear plantation
56	Nianlihe	Yuan Zhantian	Male	31	14.0	Regular staff	Management& protection
57	Nianlihe	Liu Delin	Male	46	70.0	Regular staff	Wood ear plantation
58	Nianlihe	Li Chuanshun	Male	45	68.0	Regular staff	Management& protection
59	Nianlihe	Han Baorong	Female	30	76.0	Regular staff	Management& protection
60	Nianlihe	Geng Zhengguo	Male	42	150.0	Regular staff	Management& protection
Nianlihe subtotal		28	21 , 7		2867		
61	Yumihe	Wang Qingyun	Female	40	246.0	Regular staff	Management& protection
62	Yumihe	Tao Fengjuan	Female	30	55.5	Regular staff	Management& protection
63	Yumihe	Zhou Zhankun	Male	33	15.0	Regular staff	Management& protection
					63.0	Regular staff	
64	Yumihe	Wang Zhenwei	Male	34	7.5	Regular staff	Management& protection
					36.0	Regular staff	
65	Yumihe	Zou Xiang	Female	47	19.5	Regular staff	Management& protection
66	Yumihe	Wang Guobin	Male	47	82.5	Regular staff	Management& protection
67	Yumihe	Wang Chunzeng	Male	46	60.0	Regular staff	Management& protection
68	Yumihe	Nv Jingyun	Male	50	240.0	Regular staff	Management& protection
69	Yumihe	Yu Yongsheng	Male	30	232.5	Regular staff	Re-allocation of farmland

No	Name of forest farms	Name of APs	Gender	Age	No. of Farmland to be restored ( mu )	Type of APs	Alternative Rehabilitation mode
70	Yumihe	Wang Guomin	Male	43	114.0	Regular staff	Re-allocation of farmland
71	Yumihe	Gao Yanchen	Male	47	48.0 99.0	Regular staff	forestation production
72	Yumihe	Wang Yinshan	Male	34	63.0 67.5	Regular staff	forestation production
73	Yumihe	Han Zhigang	Male	32	40.5 49.5	Regular staff Regular staff	forestation production
74	Yumihe	Zhang Xikun	Male	46	150.0	Regular staff	forestation production
75	Yumihe	Jiang Jianguai	Male	35	124.5	Regular staff	forestation production
76	Yumihe	Cong Yajun	Male	46	114.0	Regular staff	forestation production
77	Yumihe	Lv Xiuye	Male	41	115.5	Regular staff	Re-allocation of farmland
78	Yumihe	Zhang Qingguo	Male	33	82.5	Regular staff	Management& protection
79	Yumihe	Xou Jinwei	Male	28	169.5	Regular staff	Re-allocation of farmland
80	Yumihe	Han Minqiang	Male	36	51.0	Regular staff	Re-allocation of farmland
81	Yumihe	Zhang Shantian	Male	40	64.5 37.5	Regular staff Regular staff	Re-allocation of farmland
82	Yumihe	Han Fatian	Male	47	85.5	Regular staff	Forest fire prevention
83	Yumihe	Wang Guobin	Male	46	81.0	Regular staff	Management& protection
84	Yumihe	Jiang Jianfu	Male	50	96.0	Regular staff	Management& protection
85	Yumihe	Lin Shuhua	Female	30	48.0	Regular staff	Management& protection
86	Yumihe	Du Zhenxu	Male	43	31.5	Regular staff	Management& protection

No	Name of forest farms	Name of APs	Gender	Age	No. of Farmland to be restored ( mu )	Type of APs	Alternative Rehabilitation mode
87	Yumihe	Han Minsheng	Male	47	124.5	Regular staff	Management& protection
Yumihe subtotal		27	23 , 4		2914.5		
88	Yushan	Liu Guiai	Female	47	4.5	Regular staff	Management& protection
89	Yushan	Shi Shude	Male	45	4.5	Regular staff	Management& protection
90	Yushan	Liu Zhonglie	Male	38	70.5	Regular staff	Management& protection
91	Yushan	Wang Guozhen	Female	42	33.0	Regular staff	Management& protection
92	Yushan	Sun Shumei	Female	38	109.5	Regular staff	Management& protection
93	Yushan	Zhang Shuyun	Female	47	46.5	Regular staff	Management& protection
94	Yushan	Song Changtao	Male	39	225.0	Regular staff	Management& protection
95	Yushan	Li Dejiang	Male	38	51.0	Regular staff	Management& protection
96	Yushan	Zhao Jiang	Male	39	91.5	Regular staff	Management& protection
97	Yushan	Wang Zhongjun	Male	50	169.5	Regular staff	Management& protection
98	Yushan	Pang Zhenlai	Male	48	21.0	Regular staff	Management& protection
99	Yushan	Wang Yuying	Male	53	84.0	Regular staff	nursery
100	Yushan	Zhao Meihua	Female	48	189.0	Regular staff	forestation production
101	Yushan	Luo Guiying	Female	47	123.0	Regular staff	forestation production
102	Yushan	Zhou Shun	Male	45	105.0	Regular staff	business
103	Yushan	Zhou Quan	Male	38	100.5	Regular staff	Labour service
104	Yushan	Li Long	Male	43	55.5	Regular staff	Labour service
105	Yushan	Li Chun	Male	42	78.0	Regular staff	Logistics& forestation production

No	Name of forest farms	Name of APs	Gender	Age	No. of Farmland to be restored ( mu )	Type of APs	Alternative Rehabilitation mode
106	Yushan	Jin Guangxi	Male	33	51.0	Regular staff	Labour service
107	Yushan	Chen Baoguo	Male	49	60.0	Regular staff	Business
108	Yushan	Cheng Jun	Male	32	25.5	Regular staff	Labour service
109	Yushan	Cheng Gang	Male	34	43.5	Regular staff	Labour service
110	Yushan	Li Dexi	Male	47	94.5	Regular staff	Labour service
111	Yushan	Sun Fulong	Male	41	166.0	Regular staff	business
112	Yushan	Zhou Jiaqi	Male	38	121.5	Regular staff	Labour service
113	Yushan	Piao Mingshun	Male	45	99.0	Regular staff	Forest farm logistics
					16.5		
					19.5		
					15.0		
					25.5		
Yunshan subtotal		26	20 , 6		2299		
Total		113	85 , 26		10080		

---

### **6.3 Staff trainings**

Luobei Forestry Bureau has strengthened trainings on relevant technologies and skills for staffs, to teach them scientific planting and non-agricultural economic development techniques. Through trainings, women will also be taught with skills and their literacy level will be improved. See Table 6-3 for completed trainings on professional knowledge and skills.

**Table 6-3 Professional Trainings on APs by Luobei Forestry Bureaus**

Trained Unit	Date of Training	Location of Training	Content of Training	Trainees	No. of Trainees	Teacher	
						Name	Title
Total	2008.1.1-2009.4.30				2786		
Damahe	Every month end in 2008	Meeting room of forestry station	1) Duties and rights of forest management and protection staffs; 2) Management regulations on ecological benefit compensation fund; 3) Remarking and requirements of forestation technology; 4) Requirements of duty taking and patrolling works	Livelihood alternative management and protection staffs	324 persons*times (27 staffs * 12 months)	Zhang Xin, Jiang Jun	Assistant Engineer, A. Eng
Damahe	2008-5-20	Grand meeting room	Hennery techniques and management	Livelihood alternative management and protection staffs, forestry farm workers and unemployed youth	53 persons	Tian Xiaomin	Political Engineer
Damahe	2008-10-21	Timber production management office	1) Timber production techniques; 2) Safe production procedures	Livelihood alternative forestation staffs, forestry farm employees and field workers	152 persons	Zhao Fujiang, Han Fucui, Jiang Jun	Farm supervisor, technician
Damahe	Every month end of Jan to Apr in 2009	Meeting room of forestry station	1) Duties and rights of forest management and protection staffs; 2) Management regulations on ecological benefit compensation fund; 3) Remarking and requirements of forestation technology; 4) Requirements of duty taking and patrolling works	Livelihood alternative management and protection staffs	108 persons*times (27 staffs * 4 months)	Zhang Xin, Jiang Jun	A. Eng., A. Eng.
Damahe	2009-4-13	Meeting room	1) Forestation procedures ; 2) Tree planting techniques; 3) Safe production requirements	Livelihood alternative forestation staffs, forestry farm employees and field workers	78 persons	Zhao Fujiang, Han Fucui, Jiang Jun	Farm supervisor, technician
Damahe	2009-4-18	Meeting room	Chinese magnoliaving planting and wild transplating techniques	Livelihood alternative management and protection staffs, forestry farm workers and	46 persons	Cao Wangcang	Company manager



Trained Unit	Date of Training	Location of Training	Content of Training	Trainees	No. of Trainees	Teacher	
						Name	Title
				unemployed youth			
Nianlihe	Every month end in 2008	Meeting room of forestry station	1) Duties and rights of forest management and protection staffs; 2) Management regulations on ecological benefit compensation fund; 3) Remarking and requirements of forestation technology; 4) Requirements of duty taking and patrolling works	Livelihood alternative management and protection staffs	228 persons*times (19 staffs * 12 months)	Li Dongmei	A. Eng.
Nianlihe	2008-4-6	Grand meeting room	Cattle and pig cultivation techniques and management	Livelihood alternative management and protection staffs, forestry farm workers and unemployed youth	47 persons	Zhu Fajun	Senior Technician
Nianlihe	2008-10-25	Timber production management office	1) Timber production techniques; 2) Safe production procedures	Livelihood alternative forestation staffs, forestry farm employees and field workers	154 persons	Xie Yufa, Wang Huanbo	Farm supervisor, technician
Nianlihe	Every month end of Jan to Apr in 2009	Meeting room of forestry station	1) Duties and rights of forest management and protection staffs; 2) Management regulations on ecological benefit compensation fund; 3) Remarking and requirements of forestation technology; 4) Requirements of duty taking and patrolling works	Livelihood alternative management and protection staffs	76 persons*times (19 staffs * 4 months)	Li Dongmei, Wang Huanbo	A. Eng., A. Eng.
Nianlihe	2009-3-6	Meeting room	Chinese magnoliaving planting and wild transplanting techniques	Livelihood alternative management and protection staffs, forestry farm workers and unemployed youth	42 persons	Wang Huanbo	A. Eng.
Yunshan	Every month end in 2008	Meeting room of forestry station	1) Duties and rights of forest management and protection staffs; 2) Management regulations on ecological benefit compensation fund; 3) Remarking and requirements of forestation technology; 4) Requirements of duty taking and patrolling works	Livelihood alternative management and protection staffs	264 persons*times (22 staffs * 12 months)	Li Mingjun, Zhang Qiang	Engineer, A. Eng.

Trained Unit	Date of Training	Location of Training	Content of Training	Trainees	No. of Trainees	Teacher	
						Name	Title
Yunshan	2008-10-21	Timber production management office	1) Timber production techniques; 2) Safe production procedures	Livelihood alternative forestation staffs, forestry farm employees and field workers	152 persons	Li Mingjun, Zhang Qiang	Engineer, A. Eng.
Yunshan	Every month end of Jan to Apr in 2009	Meeting room of forestry station	1) Duties and rights of forest management and protection staffs; 2) Management regulations on ecological benefit compensation fund; 3) Remarking and requirements of forestation technology; 4) Requirements of duty taking and patrolling works	Livelihood alternative management and protection staffs	88 persons*times (22 staffs * 4 months)	Li Mingjun, Zhang Qiang	Engineer, A. Eng.
Yunshan	2009-4-15	Meeting room	1) Forestation procedures ; 2) Tree planting techniques; 3) Safe production requirements	Livelihood alternative forestation staffs, forestry farm employees and field workers	78 persons	Li Mingjun, Zhang Qiang, He Minjie	Engineer, A. Eng., Technician
Yumihe	Every month end in 2008	Meeting room of forestry station	1) Duties and rights of forest management and protection staffs; 2) Management regulations on ecological benefit compensation fund; 3) Remarking and requirements of forestation technology; 4) Requirements of duty taking and patrolling works	Livelihood alternative management and protection staffs	324 persons*times (27 staffs * 12 months)	Wang Wenhua, Zhou Zhanjun	Engineer, Technician
Yumihe	2008-6-20	Grand meeting room	Goose cultivation techniques and management	Livelihood alternative management and protection staffs, forestry farm workers and unemployed youth	31 persons	Zhang Huanchen, He Dewu	Farm supervisor, polical engineer
Yumihe	2008-10-21	Timber production management office	1) Timber production techniques; 2) Safe production procedures	Livelihood alternative forestation staffs, forestry farm employees and field workers	152 persons	Du Chen, Zhou Zhanjun	Farm supervisor, technician
Yumihe	Every month end of Jan to Apr in 2009	Meeting room of forestry station	1) Duties and rights of forest management and protection staffs; 2) Management regulations on ecological benefit compensation fund; 3) Remarking and requirements of forestation technology; 4) Requirements of duty taking and patrolling works	Livelihood alternative management and protection staffs	108 persons*times (27 staffs * 4 months)	Wang Wenhua, Zhou Zhanjun	Engineer, Technician

Trained Unit	Date of Training	Location of Training	Content of Training	Trainees	No. of Trainees	Teacher	
						Name	Title
Yumihe	2009-4-13	Meeting room	1) Forestation procedures ; 2) Tree planting techniques; 3) Safe production requirements	Livelihood alternative forestation staffs, forestry farm employees and field workers	78 persons	Wang Wenhua Zhou Zhanjun	Engineer, Technician
Fengxiang	Every month end in 2008	Meeting room of forestry station	1) Duties and rights of forest management and protection staffs; 2) Management regulations on ecological benefit compensation fund; 3) Remarking and requirements of forestation technology; 4) Requirements of duty taking and patrolling works	Livelihood alternative management and protection staffs	120 persons*times (10 staffs * 12 months)	Li Binrong	Engineer
Fengxiang	2008-5-26	Grand meeting room	Grape planting techniques and management; green crops planting and management	Livelihood alternative management and protection staffs, forestry farm workers and unemployed youth	24 persons	Zhou Yubo, Zhang Aiguo	Farm supervisor, Deputy farm supervisor
Fengxiang	2008-10-25	Meeting room	1) Seedling techniques; 2) Safe production procedures	Livelihood alternative forestation staffs, forestry farm employees and field workers	22 persons	Zhang Aiguo, Li Binrong	Farm supervisor, Engineer
Fengxiang	Every month end of Jan to Apr in 2009	Meeting room of forestry station	1) Duties and rights of forest management and protection staffs; 2) Management regulations on ecological benefit compensation fund; 3) Remarking and requirements of forestation technology; 4) Requirements of duty taking and patrolling works	Livelihood alternative management and protection staffs	40 persons*times (10 staffs * 4 months)	Zhang Aiguo, Li Binrong	Farm supervisor, Engineer

---

## 7 Alternative Rehabilitation

### 7.1 Statistics Analysis of Alternative Livelihood People

15,000 mu of farmland is proposed to be converted according the plan, so far 10350 mu has been converted into forest, 10080 mu was converted from all the APs on 5 forest farms , a total of 113 persons were affected, accounting for 17.52% of the the total number of the workers on 5 forest farms. Among them, 14 APs in Damahe Forest Farm, accounting for 10.00% of the total staffs; 18 APs in Fengxiang Forest Farm, accounting for 15.% of the total staffs, 28 APs in Nianlihe Forest Farm, accounting for 23.53% of the total staffs, 27 APs in Yumihe Forest Farm, accounting for 23.89% of the total staffs, 26 APs in Yunshan Forest Farm, accounting for 16.99% of the total staffs. The details of the APs are summarized in Table7-1.

**Table 7-1 Analysis of APs**

No	Forest Farm	Total No. of staffs	Area of farmland to be converted(mu)	No.of APs	Percentage of APs(%)
1	Damahe Forest Farm	140	1,110	14	10.00%
2	Fengxiang Forest Farm	120	1609.5	18	15.00%
3	Nianlihe Forest Farm	119	2867	28	23.53%
4	Yumihe Forest Farm	113	2914.5	27	23.89%
5	Yunshan Forest Farm	153	2299	26	16.99%
	Total	645	10,800	113	17.52%

### 7.2 Original Livelihood Status

A total of 113 staffs have been affected by this projectso far, a total of 10080 mu of

farmland has been converted, the per capita annual income of the staff from the farmland is 5767 yuan, accounting for 66.5% of the total revenue, other income for 2904 yuan, accounting for 33.5% of the total revenue. Per capita annual income is 13,355 yuan. The original income is shown in Table7-2.

**Table 7-2 Income Summary of APs before Farmland-forest Conversion**

No.	Name of Forest Farm	Name of APs	Time for farmland-forest conversion	No. for the converted farmland	Type of the converted farmland	Ownership of the converted farmland	Original Income of the converted farmland	Other Individual Income Of satffs	Original individual total income Before Farmland-forest conversion
I									
1	Damahe	He Yongfu	2006	120	Glebe	State -owned	8000	500	8500
2	Damahe	He Yonglin	2006	195	Glebe	State -owned	12900	500	13400
3	Damahe	Xia Peihai	2006	48	Glebe	State -owned	3300	4000	7300
4	Damahe	Yang Zhanwen	2006	117	Glebe	State -owned	8100	1000	9100
5	Damahe	Wang Weishan	2006	34.5	Glebe	State -owned	2350	5500	7850
6	Damahe	Peng Gang	2006	16.5	Glebe	State -owned	1110	7000	8110
7	Damahe	Chu Hongxing	2006	10.5	Glebe	State -owned	720	6500	7220
8	Damahe	Yang Zhanxi	2006	16.5	Glebe	State -owned	1100	7000	8100
9	Damahe	Luo Zhenxia	2006	27	Glebe	State -owned	1800	6500	8300
10	Damahe	Wang Liuzhang	2006	150	Glebe	State -owned	10300	500	10800
11	Damahe	Zhao Zigang	2006	45	Glebe	State -owned	3010	5500	8510
12	Damahe	Qin Yulan	2007	222	Glebe	State -owned	15190	500	15690
13	Damahe	Quan Xiuyun	2007	87	Glebe	State -owned	6080	1000	7080
14	Damahe	Zhao Chunrong	2007	21	Glebe	State -owned	1480	7000	8480
	Damahe subtotal			1110			75440	53000	128440
	Damahe average			79.29			5388.6	3785.7	9174.3
II									
1	Nianlihe	Ma Jia	2006	225	Glebe	State -owned	11900	0	11900
2	Nianlihe	Liu Debin	2006	59	Glebe	State -owned	3130	4000	7130
3	Nianlihe	Ding	2006	330	Glebe	State	17500	500	18000

No.	Name of Forest	Name of APs	Time for farmland-forest	No. for the	Type of the	Ownership of the	Original Income of	Other Individual	Original individual total
		Guoqiang				-owned			
4	Nianlihe	Guo Chunxiang	2006	53	Glebe	State -owned	2800	3500	6300
5	Nianlihe	Wang Laichuan	2006	142	Glebe	State -owned	7500	500	8000
6	Nianlihe	Wang Weixiang	2006	27	Glebe	State -owned	1430	5000	6430
7	Nianlihe	Zheng Bin	2006	127	Glebe	State -owned	6700	1000	7700
8	Nianlihe	Shao Yongfu	2006	80	Glebe	State -owned	4200	3000	7200
9	Nianlihe	Liu Dequan	2006	267	Glebe	State -owned	14150	500	14650
10	Nianlihe	Yuan Zhanxin	2006	80	Glebe	State -owned	4240	2500	6740
11	Nianlihe	Gao Bingzhen	2006	25	Glebe	State -owned	1300	5000	6300
12	Nianlihe	Zhang Dunhua	2006	94	Glebe	State -owned	5000	3000	8000
13	Nianlihe	Yang Guiquan	2006	66	Glebe	State -owned	3500	4000	7500
14	Nianlihe	Fu Hai	2006	92	Glebe	State -owned	4900	2500	7400
15	Nianlihe	Li Qiang	2007	150	Glebe	State -owned	8000	500	8500
16	Nianlihe	Du Quan	2007	97	Glebe	State -owned	5000	2000	7000
17	Nianlihe	Wang Weilan	2007	13	Glebe	State -owned	690	6500	7190
18	Nianlihe	Qi Fengjie	2007	53	Glebe	State -owned	2800	5000	7800
19	Nianlihe	Zheng Longhong	2007	80	Glebe	State -owned	4200	3500	7700
20	Nianlihe	Shao Hongli	2007	130	Glebe	State -owned	6900	1000	7900
21	Nianlihe	Li Hongsen	2007	227	Glebe	State -owned	12000	0	12000
22	Nianlihe	Zhou Qianbing	2008	39	Glebe	State -owned	2000	5500	7500
23	Nianlihe	Liu Yukun	2008	33	Glebe	State -owned	1700	6500	8200
24	Nianlihe	Yuan Zhantian	2008	14	Glebe	State -owned	750	6000	6750
25	Nianlihe	Liu Delin	2008	70	Glebe	State -owned	3700	4500	8200
26	Nianlihe	Li Chuanshun	2008	68	Glebe	State -owned	3600	4500	8100
27	Nianlihe	Han Baorong	2008	76	Glebe	State -owned	4000	4000	8000
28	Nianlihe	Geng Zhengguo	2008	150	Glebe	State -owned	8000	500	8500
	Nianlihe subtotal			2867			151590	85000	236590
	Nianlihe Average			102.39			5414	3036	8450
III									
1	Yunshan	Liu Guiai	2006	4.5	Glebe	State -owned	300	6500	6800
2	Yunshan	Shi Shude	2006	4.5	Glebe	State -owned	300	6000	6300

No.	Name of Forest	Name of APs	Time for farmland-forest	No. for the	Type of the	Ownership of the	Original Income of	Other Individual	Original individual total
3	Yunshan	Liu Zhonglie	2006	70.5	Glebe	State-owned	4600	3500	8100
4	Yunshan	Wang Guozhen	2006	33	Glebe	State-owned	2200	5000	7200
5	Yunshan	Sun Shumei	2006	109.5	Glebe	State-owned	7200	500	7700
6	Yunshan	Zhang Shuyun	2006	46.5	Glebe	State-owned	3100	4500	7600
7	Yunshan	Song Changtao	2006	225	Glebe	State-owned	14800	500	15300
8	Yunshan	Li Dejiang	2006	51	Glebe	State-owned	3300	4500	7800
9	Yunshan	Zhao Jiang	2006	91.5	Glebe	State-owned	6000	2000	8000
10	Yunshan	Wang Zhongjun	2006	169.5	Glebe	State-owned	11200	500	11700
11	Yunshan	Pang Zhenlai	2006	21	Glebe	State-owned	1390	6000	7390
12	Yunshan	Wang Yuying	2006	84	Glebe	State-owned	5500	2000	7500
13	Yunshan	Zhao Meihua	2006	189	Glebe	State-owned	12500	500	13000
14	Yunshan	Luo Guiying	2006	123	Glebe	State-owned	8100	500	8600
15	Yunshan	Zhou Shun	2006	105	Glebe	State-owned	6900	500	7400
16	Yunshan	Zhou Quan	2006	100.5	Glebe	State-owned	6600	1000	7600
17	Yunshan	Li Long	2006	55.5	Glebe	State-owned	3660	3500	7160
18	Yunshan	Li Chun	2006	78	Glebe	State-owned	5200	3000	8200
19	Yunshan	Jin Guangxi	2007	51	Glebe	State-owned	3360	4000	7360
20	Yunshan	Chen Baoguo	2007	60	Glebe	State-owned	3960	4000	7960
21	Yunshan	Cheng Jun	2007	25.5	Glebe	State-owned	1360	5500	6860
22	Yunshan	Cheng Gang	2007	43.5	Glebe	State-owned	2610	5000	7610
23	Yunshan	Li Dexi	2007	94.5	Glebe	State-owned	6170	1500	7670
24	Yunshan	Sun Fulong	2007	166	Glebe	State-owned	11100	500	11600
25	Yunshan	Zhou Jiaqi	2008	121.5	Glebe	State-owned	8100	500	8600
26	Yunshan	Piao Mingshun	2008	99	Glebe	State-owned	11660	1000	12660
	Yunshan		2008	16.5	Glebe	State-owned			
	Yunshan		2008	19.5	Glebe	State-owned			
	Yunshan		2008	15	Glebe	State-owned			
	Yunshan		2008	25.5	Glebe	State-owned			
	Yunshan subtotal			2299			151170	72500	223670
	Yunshan Average			88.42			5814.2	2788.5	8602.7

No.	Name of Forest	Name of APs	Time for farmland-forest	No. for the	Type of the	Ownership of the	Original Income of	Other Individual	Original individual total
IV									
1	Yumihe	Wang Qingyun	2006	246	Glebe	State-owned	13120	500	13620
2	Yumihe	Tao Fengjuan	2006	55.5	Glebe	State-owned	2960	4000	6960
3	Yumihe	Zhou Zhankun	2006	15	Glebe	State-owned	800	5500	6300
	Yumihe		2006	63	Glebe	State-owned	3358	0	3358
4	Yumihe	Wang Zhenwei	2006	7.5	Glebe	State-owned	400	3000	3400
	Yumihe		2006	36	Glebe	State-owned	1920	0	1920
5	Yumihe	Zou Xiang	2006	19.5	Glebe	State-owned	1040	5000	6040
6	Yumihe	Wang Guobin	2006	82.5	Glebe	State-owned	4400	2500	6900
7	Yumihe	Wang Chunzeng	2006	60	Glebe	State-owned	3200	4500	7700
8	Yumihe	Nv Jingyun	2006	240	Glebe	State-owned	12790	700	13490
9	Yumihe	Yu Yongsheng	2006	232.5	Glebe	State-owned	12390	700	13090
10	Yumihe	Wang Guomin	2006	114	Glebe	State-owned	6080	1000	7080
11	Yumihe	Gao Yanchen	2006	48	Glebe	State-owned	5560	2900	8460
	Yumihe		2006	99	Glebe	State-owned	5280	0	5280
12	Yumihe	Wangf Yinshan	2006	63	Glebe	State-owned	3360	4500	7860
	Yumihe		2006	67.5	Glebe	State-owned	3600	0	3600
13	Yumihe	Han Zhigang	2006	40.5	Glebe	State-owned	2160	6000	8160
	Yumihe		2006	49.5	Glebe	State-owned	2640	0	2640
14	Yumihe	Zhang Xikun	2006	150	Glebe	State-owned	8000	1000	9000
15	Yumihe	Jiang Jianguai	2007	124.5	Glebe	State-owned	7470	1500	8970
16	Yumihe	Cong Yajun	2007	114	Glebe	State-owned	6840	1500	8340
17	Yumihe	Lv Xiuye	2007	115.5	Glebe	State-owned	6930	1500	8430
18	Yumihe	Zhang Qingguo	2007	82.5	Glebe	State-owned	4950	2500	7450
19	Yumihe	Zou Jinwei	2007	169.5	Glebe	State-owned	10170	500	10670
20	Yumihe	Han Mingqiang	2007	51	Glebe	State-owned	3060	3500	6560
21	Yumihe	Zhang Shantian	2007	64.5	Glebe	State-owned	3870	3000	6870
	Yumihe		2007	37.5	Glebe	State-owned	2250	0	2250
22	Yumihe	Han Fatian	2008	85.5	Glebe	State-owned	5130	2500	7630
23	Yumihe	Wang Guobin	2008	81	Glebe	State-owned	4860	2500	7360
24	Yumihe	Jiang	2008	96	Glebe	State	5760	1500	7260



No.	Name of Forest	Name of APs	Time for farmland-forest	No. for the	Type of the	Ownership of the	Original Income of	Other Individual	Original individual total
		Jianfu				-owned			
25	Yumihe	LinShuhua	2008	48	Glebe	State -owned	2880	2500	5380
26	Yumihe	Du Zhenxu	2008	31.5	Glebe	State -owned	1890	2500	4390
27	Yumihe	Han Minsheng	2008	124.5	Glebe	State -owned	7470	700	8170
	Yumihe subtotal			2915			166588	68000	234588
	Yumihe average			108			6169.9	2518.5	8688.4
V									
1	Fengxiang	Tan Xingming	2006	157.5	Glebe	State -owned	10552	500	11052
2	Fengxiang	Liu Jiang	2006	168	Glebe	State -owned	11424	500	11924
3	Fengxiang	Zhang Aijun	2006	94.5	Glebe	State -owned	6237	2500	8737
4	Fengxiang	Liu Qinglin	2006	63	Glebe	State -owned	4095	2500	6595
5	Fengxiang	Cui Zhongjiang	2006	97.5	Glebe	State -owned	6435	2000	8435
6	Fengxiang	Guan Shiyong	2006	75	Glebe	State -owned	5025	2500	7525
7	Fengxiang	Guan Shijie	2006	103.5	Glebe	State -owned	7038	2000	9038
8	Fengxiang	Hu Qin	2006	76.5	Glebe	State -owned	4973	2500	7473
9	Fengxiang	Jiang Shuyun	2006	54	Glebe	State -owned	3456	3500	6956
	Fengxiang	Li Hai	2006	13.5	Glebe	State -owned	864		864
10	Fengxiang	Long Jiang	2007	61.5	Glebe	State -owned	3993	4700	8693
11	Fengxiang	Liu Xinhua	2007	99	Glebe	State -owned	6435	1500	7935
12	Fengxiang	Liu Xiang	2007	42	Glebe	State -owned	2772	5000	7772
13	Fengxiang	Jiang Guanzheng	2007	121.5	Glebe	State -owned	8262	2000	10262
14	Fengxiang	Zhou Baoguo	2007	96	Glebe	State -owned	6432	1500	7932
15	Fengxiang	Wang Shuhua	2008	54	Glebe	State -owned	3510	4000	7510
16	Fengxiang	Bao Jinliang	2008	73.5	Glebe	State -owned	4778	4000	8778
17	Fengxiang	Wen Yuxia	2008	48	Glebe	State -owned	3168	4000	7168
18	Fengxiang	Tan Xingming	2008	70.5	Glebe	State -owned	4724	4500	9224
	Fengxiang		2008	40.5	Glebe	State -owned	2673	0	2673
	Fengxiang subtotal			1609			106846	49700	156546
	Fengxiang average			89.42			5936	2761	8697
	Total for 5 FFs			10800			651634	328200	979834
	Average for 5 FFs			95.58			5767	2904	8671

### **7.3 Alternative Livelihood Status after Farmland-forest Conversion**

A series of alternative rehabilitation measures have been adopted, eg, forest management and protection, fire prevention, forestation production, re-allocation of farmland, economic crops plantation and animal rearing, business and labour service etc., which helped the APs recover their livelihood. The income of the APs after forest conversion is shown in Table 7-2, the analysis of the income of APs is shown in Table 7-3 and Table 7-4.

**Table 7-3 Income summary of APs**

No	Name of FF	Name of APs	Time for farmland-forest conversion	No of Farmland to be converted	Type of farmland to be converted	Ownership Of the farmland to be converted	Original income of the farmland to be converted	Other individual Income of staffs	Original Individual total income	2006-2008		
										Annual income of affected individuals		
										2006	2007	2008
I												
1	Damahe	He Yongfu	2006	120	Glebe	State-owned	8000	500	8500	7600	8100	8400
2	Damahe	He Yonglin	2006	195	Glebe	State-owned	12900	500	13400	7600	8100	8400
3	Damahe	Xia Peihai	2006	48	Glebe	State-owned	3300	4000	7300	7600	8100	8400
4	Damahe	Yang Zhanwen	2006	117	Glebe	State-owned	8100	1000	9100	7600	8100	8400
5	Damahe	Wang Weishan	2006	34.5	Glebe	State-owned	2350	5500	7850	10300	10800	11100
6	Damahe	Peng Gang	2006	16.5	Glebe	State-owned	1110	7000	8110	10300	10800	11100
7	Damahe	Chu Hongxing	2006	10.5	Glebe	State-owned	720	6500	7220	9000	9500	9800
8	Damahe	Yang Zhanxi	2006	16.5	Glebe	State-owned	1100	7000	8100	7600	8100	8400
9	Damahe	Luo Zhenxia	2006	27	Glebe	State-owned	1800	6500	8300	7600	8100	8400
10	Damahe	Wang Liuzhang	2006	150	Glebe	State-owned	10300	500	10800	7600	8100	8400
11	Damahe	Zhao Zigang	2006	45	Glebe	State-owned	3010	5500	8510	10300	10800	11100
12	Damahe	Qin Yulan	2007	222	Glebe	State-owned	15190	500	15690		7600	8100
13	Damahe	Quan Xiuyun	2007	87	Glebe	State-owned	6080	1000	7080		10300	10800

No	Name of FF	Name of APs	Time for farmland-forest conversion	No of Farmland to be converted	Type of farmland to be converted	Ownership Of the farmland to be converted	Original income of the farmland to be converted	Other individual Income of staffs	Original Individual total income	2006-2008		
										Annual income of affected individuals		
										2006	2007	2008
14	Damahe	Zhao Chunrong	2007	21	Glebe	State-owned	1480	7000	8480		10300	10800
	Damahe total			1110			75440	53000	128440	93100	126800	131600
	Damahe average			79.29			5388.6	3785.7	9174.3	8463.6	9057.1	9400.0
II												
1	Nianlihe	Ma Jia	2006	225	Glebe	State-owned	11900	0	11900	10300	10800	11200
2	Nianlihe	Liu Debin	2006	59	Glebe	State-owned	3130	4000	7130	10300	10800	11200
3	Nianlihe	Ding Guoqiang	2006	330	Glebe	State-owned	17500	500	18000	10300	10800	11200
4	Nianlihe	Guo Chunxiang	2006	53	Glebe	State-owned	2800	3500	6300	10300	10800	11200
5	Nianlihe	Wang Laichuan	2006	142	Glebe	State-owned	7500	500	8000	10300	10800	11200
6	Nianlihe	Wang Weixiang	2006	27	Glebe	State-owned	1430	5000	6430	9000	9500	10000
7	Nianlihe	Zheng Bin	2006	127	Glebe	State-owned	6700	1000	7700	10300	10800	11100
8	Nianlihe	Shao Yongfu	2006	80	Glebe	State-owned	4200	3000	7200	10300	10800	11100
9	Nianlihe	Liu Dequan	2006	267	Glebe	State-owned	14150	500	14650	10300	10800	11100
10	Nianlihe	Yuan Zhanxin	2006	80	Glebe	State-owned	4240	2500	6740	9000	9500	9800
11	Nianlihe	Gao Bingzhen	2006	25	Glebe	State-owned	1300	5000	6300	7600	8100	8400
12	Nianlihe	Zhang Dunhua	2006	94	Glebe	State-owned	5000	3000	8000	9000	9500	10000

No	Name of FF	Name of APs	Time for farmland-forest conversion	No of Farmland to be converted	Type of farmland to be converted	Ownership Of the farmland to be converted	Original income of the farmland to be converted	Other individual Income of staffs	Original Individual total income	2006-2008		
										Annual income of affected individuals		
										2006	2007	2008
13	Nianlihe	Yang Guiquan	2006	66	Glebe	State-owned	3500	4000	7500	10300	10800	11100
14	Nianlihe	Fu Hai	2006	92	Glebe	State-owned	4900	2500	7400	10300	10800	11100
15	Nianlihe	Li Qiang	2007	150	Glebe	State-owned	8000	500	8500		7600	8100
16	Nianlihe	Du Quan	2007	97	Glebe	State-owned	5000	2000	7000		10300	10800
17	Nianlihe	Wang Weilan	2007	13	Glebe	State-owned	690	6500	7190		10300	10800
18	Nianlihe	Qi Fengjie	2007	53	Glebe	State-owned	2800	5000	7800		10300	10800
19	Nianlihe	Zheng Longhong	2007	80	Glebe	State-owned	4200	3500	7700		10300	10800
20	Nianlihe	Shao Hongli	2007	130	Glebe	State-owned	6900	1000	7900		10300	10600
21	Nianlihe	Li Hongsen	2007	227	Glebe	State-owned	12000	0	12000		10300	10600
22	Nianlihe	Zhou Qianbing	2008	39	Glebe	State-owned	2000	5500	7500			10300
23	Nianlihe	Liu Yukun	2008	33	Glebe	State-owned	1700	6500	8200			7500
24	Nianlihe	Yuan Zhantian	2008	14	Glebe	State-owned	750	6000	6750			10300
25	Nianlihe	Liu Delin	2008	70	Glebe	State-owned	3700	4500	8200			7500
26	Nianlihe	Li Chuanshun	2008	68	Glebe	State-owned	3600	4500	8100			10300
27	Nianlihe	Han Baorong	2008	76	Glebe	State-owned	4000	4000	8000			10300
28	Nianlihe	Geng Zhengguo	2008	150	Glebe	State-owned	8000	500	8500			10300

No	Name of FF	Name of APs	Time for farmland-forest conversion	No of Farmland to be converted	Type of farmland to be converted	Ownership Of the farmland to be converted	Original income of the farmland to be converted	Other individual Income of staffs	Original Individual total income	2006-2008		
										Annual income of affected individuals		
										2006	2007	2008
	Nianlihe total			2867			151590	85000	236590	137600	214000	288700
	Nianlihe average			102.39			5414	3036	8450	9829	10190	10311
III												
1	Yunshan	Liu Guiai	2006	4.5	Glebe	State-owned	300	6500	6800	10300	10800	11200
2	Yunshan	Shi Shude	2006	4.5	Glebe	State-owned	300	6000	6300	10300	10800	11200
3	Yunshan	Liu Zhonglie	2006	70.5	Glebe	State-owned	4600	3500	8100	10300	10800	11200
4	Yunshan	Wang Guozhen	2006	33	Glebe	State-owned	2200	5000	7200	10300	10800	11200
5	Yunshan	Sun Shumei	2006	109.5	Glebe	State-owned	7200	500	7700	10300	10800	11200
6	Yunshan	Zhang Shuyun	2006	46.5	Glebe	State-owned	3100	4500	7600	10300	10800	11200
7	Yunshan	Song Changtao	2006	225	Glebe	State-owned	14800	500	15300	10300	10800	11200
8	Yunshan	Li Dejiang	2006	51	Glebe	State-owned	3300	4500	7800	10300	10800	11200
9	Yunshan	Zhao Jiang	2006	91.5	Glebe	State-owned	6000	2000	8000	10300	10800	11200
10	Yunshan	Wang Zhongjun	2006	169.5	Glebe	State-owned	11200	500	11700	10300	10800	11200
11	Yunshan	Pang Zhenlai	2006	21	Glebe	State-owned	1390	6000	7390	10300	10800	11200
12	Yunshan	Wang Yuying	2006	84	Glebe	State-owned	5500	2000	7500	10300	10800	11200
13	Yunshan	Zhao Meihua	2006	189	Glebe	State-owned	12500	500	13000	7600	8100	8500

No	Name of FF	Name of APs	Time for farmland-forest conversion	No of Farmland to be converted	Type of farmland to be converted	Ownership Of the farmland to be converted	Original income of the farmland to be converted	Other individual Income of staffs	Original Individual total income	2006-2008		
										Annual income of affected individuals		
										2006	2007	2008
14	Yunshan	Luo Guiying	2006	123	Glebe	State-owned	8100	500	8600	7600	8100	8500
15	Yunshan	Zhou Shun	2006	105	Glebe	State-owned	6900	500	7400	9000	9500	10000
16	Yunshan	Zhou Quan	2006	100.5	Glebe	State-owned	6600	1000	7600	8000	8500	9000
17	Yunshan	Li Long	2006	55.5	Glebe	State-owned	3660	3500	7160	9000	9500	10000
18	Yunshan	Li Chun	2006	78	Glebe	State-owned	5200	3000	8200	10300	10800	11200
19	Yunshan	Jin Guangxi	2007	51	Glebe	State-owned	3360	4000	7360		9000	9300
20	Yunshan	Chen Baoguo	2007	60	Glebe	State-owned	3960	4000	7960		8000	8300
21	Yunshan	Cheng Jun	2007	25.5	Glebe	State-owned	1360	5500	6860		9000	9300
22	Yunshan	Cheng Gang	2007	43.5	Glebe	State-owned	2610	5000	7610		9000	9300
23	Yunshan	Li Dexi	2007	94.5	Glebe	State-owned	6170	1500	7670		9000	9300
24	Yunshan	Sun Fulong	2007	166	Glebe	State-owned	11100	500	11600		9000	9300
25	Yunshan	Zhou Jiaqi	2008	121.5	Glebe	State-owned	8100	500	8600			9000
26	Yunshan	Piao Mingshun	2008	175.5	Glebe	State-owned	11660	1000	12660			10300
	Yunshan total			2299			151170	72500	223670	175100	237100	265700
	Yunshan total			88.42			5814.2	2788.5	8602.7	9727.8	9879.2	10219.2
IV												

No	Name of FF	Name of APs	Time for farmland-forest conversion	No of Farmland to be converted	Type of farmland to be converted	Ownership Of the farmland to be converted	Original income of the farmland to be converted	Other individual Income of staffs	Original Individual total income	2006-2008		
										Annual income of affected individuals		
										2006	2007	2008
1	Yumihe	Wang Qingyun	2006	246	Glebe	State-owned	13120	500	13620	10300	10800	11100
2	Yumihe	Tao Fengjuan	2006	55.5	Glebe	State-owned	2960	4000	6960	10300	10800	11100
3	Yumihe	Zhou Zhankun	2006	78	Glebe	State-owned	4158	5500	9658	10300	10800	11100
4	Yumihe	Wang Zhenwei	2006	43.5	Glebe	State-owned	2320	3000	5320	10300	10800	11300
5	Yumihe	Zou Xiang	2006	19.5	Glebe	State-owned	1040	5000	6040	10300	10800	11300
6	Yumihe	Wang Guobin	2006	82.5	Glebe	State-owned	4400	2500	6900	10300	10800	11300
7	Yumihe	Wang Chunzeng	2006	60	Glebe	State-owned	3200	4500	7700	10300	10800	11300
8	Yumihe	Nv Jingyun	2006	240	Glebe	State-owned	12790	700	13490	10300	10800	11300
9	Yumihe	Yu Yongsheng	2006	232.5	Glebe	State-owned	12390	700	13090	8500	9000	9500
10	Yumihe	Wang Guomin	2006	114	Glebe	State-owned	6080	1000	7080	8500	9000	9500
11	Yumihe	Gao Yanchen	2006	147	Glebe	State-owned	10840	2900	13740	7600	8100	8600
12	Yumihe	Wang Yinshan	2006	130.5	Glebe	State-owned	6960	4500	11460	7600	8100	8600
13	Yumihe	Han Zhigang	2006	90	Glebe	State-owned	4800	6000	10800	7600	8100	8600
14	Yumihe	Zhang Xikun	2006	150	Glebe	State-owned	8000	1000	9000	7600	7900	8600
15	Yumihe	Jiang Jianguai	2007	124.5	Glebe	State-owned	7470	1500	8970		7600	7900
16	Yumihe	Cong Yajun	2007	114	Glebe	State-owned	6840	1500	8340		7600	7900



No	Name of FF	Name of APs	Time for farmland-forest conversion	No of Farmland to be converted	Type of farmland to be converted	Ownership Of the farmland to be converted	Original income of the farmland to be converted	Other individual Income of staffs	Original Individual total income	2006-2008		
										Annual income of affected individuals		
										2006	2007	2008
17	Yumihe	Lv Xuye	2007	115.5	Glebe	State-owned	6930	1500	8430		8500	8800
18	Yumihe	Zhang Qingguo	2007	82.5	Glebe	State-owned	4950	2500	7450		12300	12600
19	Yumihe	Zou Jinwei	2007	169.5	Glebe	State-owned	10170	500	10670		8500	8800
20	Yumihe	Han Mingqiang	2007	51	Glebe	State-owned	3060	3500	6560		8500	8800
21	Yumihe	Zhang Shuitian	2007	102	Glebe	State-owned	6120	3000	9120		8500	8800
22	Yumihe	Han Fatian	2008	85.5	Glebe	State-owned	5130	2500	7630			10300
23	Yumihe	Wang Guobin	2008	81	Glebe	State-owned	4860	2500	7360			10300
24	Yumihe	Jiang Jianfu	2008	96	Glebe	State-owned	5760	1500	7260			10300
25	Yumihe	Lin Shuhua	2008	48	Glebe	State-owned	2880	2500	5380			10300
26	Yumihe	Du Zhengxu	2008	31.5	Glebe	State-owned	1890	2500	4390			10300
27	Yumihe	Han Minsheng	2008	124.5	Glebe	State-owned	7470	700	8170			10300
	Yumihe total			2915			166588	68000	234588	129800	198100	268600
	Yumihe average			108			6169.9	2518.5	8688.4	9271.4	9433.3	9948.1
V												
1	Fengxiang	Tan Xingming	2006	157.5	Glebe	State-owned	10552	500	11052	8500	9000	9300
2	Fengxiang	Liu Jiang	2006	168	Glebe	State-owned	11424	500	11924	8500	9000	9300

No	Name of FF	Name of APs	Time for farmland-forest conversion	No of Farmland to be converted	Type of farmland to be converted	Ownership Of the farmland to be converted	Original income of the farmland to be converted	Other individual Income of staffs	Original Individual total income	2006-2008		
										Annual income of affected individuals		
										2006	2007	2008
3	Fengxiang	Zhang Aijun	2006	94.5	Glebe	State-owned	6237	2500	8737	8500	9000	9300
4	Fengxiang	Liu Qinglin	2006	63	Glebe	State-owned	4095	2500	6595	7600	8100	8400
5	Fengxiang	Cui Zhongjiang	2006	97.5	Glebe	State-owned	6435	2000	8435	8500	9000	9300
6	Fengxiang	Guan Shiyong	2006	75	Glebe	State-owned	5025	2500	7525	8500	9000	9300
7	Fengxiang	Guan Shijie	2006	103.5	Glebe	State-owned	7038	2000	9038	8500	9000	9300
8	Fengxiang	Hu Qin	2006	76.5	Glebe	State-owned	4973	2500	7473	8500	9000	9300
9	Fengxiang	Jiang Shuyun	2006	67.5	Glebe	State-owned	4320	3500	7820	8500	9000	9300
10	Fengxiang	Li Hai	2007	61.5	Glebe	State-owned	3993	4700	8693		8500	9000
11	Fengxiang	Long Jiang	2007	99	Glebe	State-owned	6435	1500	7935		8500	9000
12	Fengxiang	Liu Xinhua	2007	42	Glebe	State-owned	2772	5000	7772		8000	8500
13	Fengxiang	Liu Xiang	2007	121.5	Glebe	State-owned	8262	2000	10262		7600	8100
14	Fengxiang	Jiang Guanzheng	2007	96	Glebe	State-owned	6432	1500	7932		8500	9000
15	Fengxiang	Zhou Baoguo	2008	54	Glebe	State-owned	3510	4000	7510			8500
16	Fengxiang	Wang Shuhua	2008	73.5	Glebe	State-owned	4778	4000	8778			8500
17	Fengxiang	Bao Jinliang	2008	48	Glebe	State-owned	3168	4000	7168			7600
18	Fengxiang	Wen Yuxia	2008	111	Glebe	State-owned	7397	4500	11897			8500

No	Name of FF	Name of APs	Time for farmland-forest conversion	No of Farmland to be converted	Type of farmland to be converted	Ownership Of the farmland to be converted	Original income of the farmland to be converted	Other individual Income of staffs	Original Individual total income	2006-2008		
										Annual income of affected individuals		
										2006	2007	2008
	Fengxiang subtotal			1609			106846	49700	156546	75600	121200	159500
	Fengxiang Average			89.42			5936	2761	8697	8400	8657	8861
	Total of 5FFs			10800			651634	328200	979834	611200	897200	1114100
	Average Of FFs			95.58			5767	2904	8671	9261	9545	9859

Table 7-4 Income analysis of APs

No.	Name of Forest farm	Name of APs	Original total income	2006-2008			Increasing amount and proportion compared with original income					
				Annual income of affected individuals			Increasing rate	Increasing Proportion	Increasing amount	Increasing Proportion	Increasing amount	Increasing Proportion
				2006	2007	2008	2006		2007		2008	
1	Damahe	He Yongfu	8500	7600	8100	8400	-900	-10.6%	-400	-4.7%	-100	-1.2%
2	Damahe	He Yonglin	13400	7600	8100	8400	-5800	-43.3%	-5300	-39.6%	-5000	-37.3%
3	Damahe	Xia Peihai	7300	7600	8100	8400	300	4.1%	800	11.0%	1100	15.1%
4	Damahe	Yang Zhanwen	9100	7600	8100	8400	-1500	-16.5%	-1000	-11.0%	-700	-7.7%
5	Damahe	Wang Weishan	7850	10300	10800	11100	2450	31.2%	2950	37.6%	3250	41.4%
6	Damahe	Peng Gang	8110	10300	10800	11100	2190	27.0%	2690	33.2%	2990	36.9%
7	Damahe	Chu Hongxing	7220	9000	9500	9800	1780	24.7%	2280	31.6%	2580	35.7%
8	Damahe	Yang Zhanxi	8100	7600	8100	8400	-500	-6.2%	0	0.0%	300	3.7%
9	Damahe	Luo Zhenxia	8300	7600	8100	8400	-700	-8.4%	-200	-2.4%	100	1.2%

No.	Name of Forest farm	Name of APs	Original total income	2006-2008			Increasing amount and proportion compared with original income					
				Annual income of affected individuals			Increasing rate	Increasing Proportion	Increasing amount	Increasing Proportion	Increasing amount	Increasing Proportion
				2006	2007	2008						
10	Damahe	Wang Liuzhang	10800	7600	8100	8400	-3200	-29.6%	-2700	-25.0%	-2400	-22.2%
11	Damahe	Zhao Zigang	8510	10300	10800	11100	1790	21.0%	2290	26.9%	2590	30.4%
12	Damahe	Qin Yulan	15690		7600	8100			-8090	-51.6%	-7590	-48.4%
13	Damahe	Quan Xiuyun	7080		10300	10800			3220	45.5%	3720	52.5%
14	Damahe	Zhao Chunrong	8480		10300	10800			1820	21.5%	2320	27.4%
	Damahe sbtotal		128440	93100	126800	131600	-4090	-4.2%	-1640	-1.3%	3160	2.5%
	Damahe average		9174.3	8463.6	9057.1	9400.0	-371.8		-117.1		225.7	
II												
1	Nianlihe	Ma Jia	11900	10300	10800	11200	-1600	-13.4%	-1100	-9.2%	-700	-5.9%
2	Nianlihe	Liu Debin	7130	10300	10800	11200	3170	44.5%	3670	51.5%	4070	57.1%
3	Nianlihe	Ding Guoqiang	18000	10300	10800	11200	-7700	-42.8%	-7200	-40.0%	-6800	-37.8%
4	Nianlihe	Guo Chunxiang	6300	10300	10800	11200	4000	63.5%	4500	71.4%	4900	77.8%
5	Nianlihe	Wang Laichuan	8000	10300	10800	11200	2300	28.8%	2800	35.0%	3200	40.0%
6	Nianlihe	Wang Weixiang	6430	9000	9500	10000	2570	40.0%	3070	47.7%	3570	55.5%
7	Nianlihe	Zheng Bin	7700	10300	10800	11100	2600	33.8%	3100	40.3%	3400	44.2%
8	Nianlihe	Shao Yongfu	7200	10300	10800	11100	3100	43.1%	3600	50.0%	3900	54.2%
9	Nianlihe	Liu Dequan	14650	10300	10800	11100	-4350	-29.7%	-3850	-26.3%	-3550	-24.2%
10	Nianlihe	Yuan Zhanxin	6740	9000	9500	9800	2260	33.5%	2760	40.9%	3060	45.4%
11	Nianlihe	Gao Bingzhen	6300	7600	8100	8400	1300	20.6%	1800	28.6%	2100	33.3%

No.	Name of Forest farm	Name of APs	Original total income	2006-2008			Increasing amount and proportion compared with original income					
				Annual income of affected individuals			Increasing rate	Increasing Proportion	Increasing amount	Increasing Proportion	Increasing amount	Increasing Proportion
				2006	2007	2008						
12	Nianlihe	Zhang Dunhua	8000	9000	9500	10000	1000	12.5%	1500	18.8%	2000	25.0%
13	Nianlihe	Yang Guiquan	7500	10300	10800	11100	2800	37.3%	3300	44.0%	3600	48.0%
14	Nianlihe	Fu Hai	7400	10300	10800	11100	2900	39.2%	3400	45.9%	3700	50.0%
15	Nianlihe	Li Qiang	8500		7600	8100			-900	-10.6%	-400	-4.7%
16	Nianlihe	Du Quan	7000		10300	10800			3300	47.1%	3800	54.3%
17	Nianlihe	Wang Weilan	7190		10300	10800			3110	43.3%	3610	50.2%
18	Nianlihe	Qi Fengjie	7800		10300	10800			2500	32.1%	3000	38.5%
19	Nianlihe	Zheng Longhong	7700		10300	10800			2600	33.8%	3100	40.3%
20	Nianlihe	Shao Hongli	7900		10300	10600			2400	30.4%	2700	34.2%
21	Nianlihe	Li Hongsen	12000		10300	10600			-1700	-14.2%	-1400	-11.7%
22	Nianlihe	Zhou Qianbing	7500			10300					2800	37.3%
23	Nianlihe	Liu Yukun	8200			7500					-700	-8.5%
24	Nianlihe	Yuan Zhantian	6750			10300					3550	52.6%
25	Nianlihe	Liu Delin	8200			7500					-700	-8.5%
26	Nianlihe	Li Chuanshun	8100			10300					2200	27.2%
27	Nianlihe	Han Baorong	8000			10300					2300	28.8%
28	Nianlihe	Geng Zhengguo	8500			10300					1800	21.2%
	Nianlihe subtotal		236590	137600	214000	288700	14350	11.6%	32660	14.8%	52110	22.0%
	Nianlihe average		8450	9829	10190	10311	1025		1555		1861	
III												

No.	Name of Forest farm	Name of APs	Original total income	2006-2008			Increasing amount and proportion compared with original income					
				Annual income of affected individuals			Increasing rate	Increasing Proportion	Increasing amount	Increasing Proportion	Increasing amount	Increasing Proportion
				2006	2007	2008						
1	Yunshan	Liu Guiai	6800	10300	10800	11200	3500	51.5%	4000	58.8%	4400	64.7%
2	Yunshan	Shi Shude	6300	10300	10800	11200	4000	63.5%	4500	71.4%	4900	77.8%
3	Yunshan	Liu Zhonglie	8100	10300	10800	11200	2200	27.2%	2700	33.3%	3100	38.3%
4	Yunshan	Wang Guozhen	7200	10300	10800	11200	3100	43.1%	3600	50.0%	4000	55.6%
5	Yunshan	Sun Shumei	7700	10300	10800	11200	2600	33.8%	3100	40.3%	3500	45.5%
6	Yunshan	Zhang Shuyun	7600	10300	10800	11200	2700	35.5%	3200	42.1%	3600	47.4%
7	Yunshan	Song Changtao	15300	10300	10800	11200	-5000	-32.7%	-4500	-29.4%	-4100	-26.8%
8	Yunshan	Li Dejiang	7800	10300	10800	11200	2500	32.1%	3000	38.5%	3400	43.6%
9	Yunshan	Zhao Jiang	8000	10300	10800	11200	2300	28.8%	2800	35.0%	3200	40.0%
10	Yunshan	Wang Zhongjun	11700	10300	10800	11200	-1400	-12.0%	-900	-7.7%	-500	-4.3%
11	Yunshan	Pang Zhenlai	7390	10300	10800	11200	2910	39.4%	3410	46.1%	3810	51.6%
12	Yunshan	Wang Yuying	7500	10300	10800	11200	2800	37.3%	3300	44.0%	3700	49.3%
13	Yunshan	Zhao Meihua	13000	7600	8100	8500	-5400	-41.5%	-4900	-37.7%	-4500	-34.6%
14	Yunshan	Luo Guiying	8600	7600	8100	8500	-1000	-11.6%	-500	-5.8%	-100	-1.2%
15	Yunshan	Zhou Shun	7400	9000	9500	10000	1600	21.6%	2100	28.4%	2600	35.1%
16	Yunshan	Zhou Quan	7600	8000	8500	9000	400	5.3%	900	11.8%	1400	18.4%
17	Yunshan	Li Long	7160	9000	9500	10000	1840	25.7%	2340	32.7%	2840	39.7%
18	Yunshan	Li Chun	8200	10300	10800	11200	2100	25.6%	2600	31.7%	3000	36.6%
19	Yunshan	Jin Guangxi	7360		9000	9300			1640	22.3%	1940	26.4%
20	Yunshan	Chen Baoguo	7960		8000	8300			40	0.5%	340	4.3%

No.	Name of Forest farm	Name of APs	Original total income	2006-2008			Increasing amount and proportion compared with original income					
				Annual income of affected individuals			Increasing rate	Increasing Proportion	Increasing amount	Increasing Proportion	Increasing amount	Increasing Proportion
				2006	2007	2008						
21	Yunshan	Cheng Jun	6860		9000	9300			2140	31.2%	2440	35.6%
22	Yunshan	Cheng Gang	7610		9000	9300			1390	18.3%	1690	22.2%
23	Yunshan	Li Dexi	7670		9000	9300			1330	17.3%	1630	21.3%
24	Yunshan	Sun Fulong	11600		9000	9300			-2600	-22.4%	-2300	-19.8%
25	Yunshan	Zhou Jiaqi	8600			9000					400	4.7%
26	Yunshan	Piao Mingshun	12660			10300					-2360	-18.6%
	Yunshan subtotal		223670	175100	237100	265700	21750	1.0%	34690	17.1%	42030	18.8%
	Yunshan average		8602.7	9727.8	9879.2	10219.2	1208.3		1445.4		1616.5	0.0
IV												
1	Yumihe	Wang Qingyun	13620	10300	10800	11100	-3320	-24.4%	-2820	-20.7%	-2520	-18.5%
2	Yumihe	Tao Fengjuan	6960	10300	10800	11100	3340	48.0%	3840	55.2%	4140	59.5%
3	Yumihe	Zhou Zhankun	9658	10300	10800	11100	642	6.6%	1142	11.8%	1442	14.9%
4	Yumihe	Wang Zhenwei	5320	10300	10800	11300	4980	93.6%	5480	103.0%	5980	112.4%
5	Yumihe	Zou Xiang	6040	10300	10800	11300	4260	70.5%	4760	78.8%	5260	87.1%
6	Yumihe	Wang Guobin	6900	10300	10800	11300	3400	49.3%	3900	56.5%	4400	63.8%
7	Yumihe	Wang Chunzeng	7700	10300	10800	11300	2600	33.8%	3100	40.3%	3600	46.8%
8	Yumihe	Nv Jingyun	13490	10300	10800	11300	-3190	-23.6%	-2690	-19.9%	-2190	-16.2%
9	Yumihe	Yu Yongsheng	13090	8500	9000	9500	-4590	-35.1%	-4090	-31.2%	-3590	-27.4%
10	Yumihe	Wang Guomin	7080	8500	9000	9500	1420	20.1%	1920	27.1%	2420	34.2%

No.	Name of Forest farm	Name of APs	Original total income	2006-2008			Increasing amount and proportion compared with original income					
				Annual income of affected individuals			Increasing rate	Increasing Proportion	Increasing amount	Increasing Proportion	Increasing amount	Increasing Proportion
				2006	2007	2008						
11	Yumihe	Gao Yanchen	13740	7600	8100	8600	-6140	-44.7%	-5640	-41.0%	-5140	-37.4%
12	Yumihe	Wang Yinshan	11460	7600	8100	8600	-3860	-33.7%	-3360	-29.3%	-2860	-25.0%
13	Yumihe	Han Zhigang	10800	7600	8100	8600	-3200	-29.6%	-2700	-25.0%	-2200	-20.4%
14	Yumihe	Zhang Xikun	9000	7600	7900	8600	-1400	-15.6%	-1100	-12.2%	-400	-4.4%
15	Yumihe	Jiang Jianguai	8970		7600	7900			-1370	-15.3%	-1070	-11.9%
16	Yumihe	Cong Yajun	8340		7600	7900			-740	-8.9%	-440	-5.3%
17	Yumihe	Lv Xuye	8430		8500	8800			70	0.8%	370	4.4%
18	Yumihe	Zhang Qingguo	7450		12300	12600			4850	65.1%	5150	69.1%
19	Yumihe	Zou Jinwei	10670		8500	8800			-2170	-20.3%	-1870	-17.5%
20	Yumihe	Han Minqiang	6560		8500	8800			1940	29.6%	2240	34.1%
21	Yumihe	Zhang Shuitian	9120		8500	8800			-620	-6.8%	-320	-3.5%
22	Yumihe	Han Fatian	7630			10300					2670	35.0%
23	Yumihe	Wang Guobin	7360			10300					2940	39.9%
24	Yumihe	Jiang Jianfu	7260			10300					3040	41.9%
25	Yumihe	Lin Shuhua	5380			10300					4920	91.4%
26	Yumihe	Du Zhengxu	4390			10300					5910	134.6%
27	Yumihe	Han Minsheng	8170			10300					2130	26.1%
	Yumihe subtotal		234588	129800	198100	268600	-5058	-3.8%	3702	1.9%	34012	14.5%
	Yumihe average		8688.4	9271.4	9433.3	9948.1	-361.3		176.3		1259.7	
V												



No.	Name of Forest farm	Name of APs	Original total income	2006-2008			Increasing amount and proportion compared with original income					
				Annual income of affected individuals			Increasing rate	Increasing Proportion	Increasing amount	Increasing Proportion	Increasing amount	Increasing Proportion
				2006	2007	2008						
1	Fengxiang	Tan Xingming	11052	8500	9000	9300	-2552	-23.1%	-2052	-18.6%	-1752	-15.9%
2	Fengxiang	Liu Jiang	11924	8500	9000	9300	-3424	-28.7%	-2924	-24.5%	-2624	-22.0%
3	Fengxiang	Zhang Aijun	8737	8500	9000	9300	-237	-2.7%	263	3.0%	563	6.4%
4	Fengxiang	Liu Qinglin	6595	7600	8100	8400	1005	15.2%	1505	22.8%	1805	27.4%
5	Fengxiang	Cui Zhongjiang	8435	8500	9000	9300	65	0.8%	565	6.7%	865	10.3%
6	Fengxiang	Guan Shiyong	7525	8500	9000	9300	975	13.0%	1475	19.6%	1775	23.6%
7	Fengxiang	Guan Shijie	9038	8500	9000	9300	-538	-6.0%	-38	-0.4%	262	2.9%
8	Fengxiang	Hu Qin	7473	8500	9000	9300	1027	13.7%	1527	20.4%	1827	24.4%
9	Fengxiang	Jiang Shuyun	7820	8500	9000	9300	680	8.7%	1180	15.1%	1480	18.9%
10	Fengxiang	Li Hai	8693		8500	9000			-193	-2.2%	307	3.5%
11	Fengxiang	Long Jiang	7935		8500	9000			565	7.1%	1065	13.4%
12	Fengxiang	Liu Xinhua	7772		8000	8500			228	2.9%	728	9.4%
13	Fengxiang	Liu Xiang	10262		7600	8100			-2662	-25.9%	-2162	-21.1%
14	Fengxiang	Jiang Guanzheng	7932		8500	9000			568	7.2%	1068	13.5%
15	Fengxiang	Zhou Baoguo	7510			8500					990	13.2%
16	Fengxiang	Wang Shuhua	8778			8500					-278	-3.2%
17	Fengxiang	Bao Jinliang	7168			7600					432	6.0%
18	Fengxiang	Wen Yuxia	11897			8500					-3397	-28.6%
	Fengxiang subtotal		156546	75600	121200	159500	-2999	-3.8%	7	0.0%	2954	1.9%
	Fengxiang average		8697	8400	8657	8861	-333		1		164	

No.	Name of Forest farm	Name of APs	Original total income	2006-2008			Increasing amount and proportion compared with original income					
				Annual income of affected individuals			Increasing rate	Increasing Proportion	Increasing amount	Increasing Proportion	Increasing amount	Increasing Proportion
				2006	2007	2008						
	Total for 5 FFs	113	979834	611200	897200	1114100	23953	4.1%	69419	8.4%	134266	13.7%
	Average for 5FFs		8671	9261	9545	9859	363		739		1188	

From Table 7-3 and 7-4, we can see the average income of APs has been increased from a certain degree, although the income of some individuals were affected, especially in the first year after farmland-forest conversion, their income have been increased steadily. For the forest farms with serious impact, problems were resolved through the attendance of forest farm operation activities.

#### 7.4 General Analysis of the Income and Expenditure of the staffs

##### 7.4.1 Annual income and expenditure of staffs

Through sorting out the data, the annual average income of the staffs before farmland-forest conversion, the per capital average income is 9859 Yuan. The analysis of the details of income is summarized as Table 7-5.

The per capital average expenditure before farmland-forest conversion is 6678 Yuan, the per capital average expenditure of 2008 is 7465 Yuan. Table 7-6 and 7-7 are the detailed analysis of family expenditure.

Table 7-5 Income Analysis Summary of APs

Item	Income before conversion farmland into forest (yuan)	Proportion (%)	Income after conversion farmland into forest 2008 (yuan)	Proportion (%)	Increase by(yuan)	Increasing rate(%)
Sell agricultural product	5767	66.51	1631	16.54	-4136	
Management&protection			3796	38.51	3796	
Forestation production			812	8.24	812	
Animal breeding			264	2.67	264	
Business& labour service			983	9.97	983	
Wild product and others	2904	33.49	2373	24.06	-531	
Total of annual income	8671	100	9859	100.00	1188	13.70

Table 7-6 Expenditure Analysis Summary of APs

Item	Average Annual Expenditure before farmland-forest conversion	Proportion (%)	Average annual expenditure of 2008	Proportion (%)
Food (rice, vegetables, fruit, meat, fowls, egg)	1669	24.99%	1853	24.82%
Water	41	0.61%	45	0.60%
Electricity	262	3.92%	324	4.34%
Clothes	453	6.79%	498	6.67%
Transportation (public vehicles)	59	0.89%	62	0.83%
Communications (phone, cell phone)	428	6.41%	471	6.31%
Education (including books,exercises-books,pens,other studying tools and transportation)	1688	25.28%	1857	24.88%
Medical/Medicine (paid by themselves)	500	7.49%	525	7.03%
Costumes, beauty, shower, haircut, entertainment (movie, opera, games), restaurants	68	1.02%	71	0.95%
Gifts (birth, marriage, death, etc)	626	9.37%	814	10.90%
Others	883	13.23%	945	12.66%
Total annual expenditure	6678	100.00%	7465	100.00%

Table 7-7 Expenditure Analysis Summary of APs

Item	Before farmland-forest conversion	2008		
	Average annual expenditure	Average annual expenditure	Increased by compared with the year before farmland-forest Conversion (yuan)	Increased rate(%) compared with the year before farmland-forest Conversion
Food (rice, vegetables, fruit, meat, fowls, egg)				
Water	1669	1853	184	11.02%
Electricity	41	45	4	9.76%
Clothes	262	324	62	23.66%
Transportation (public vehicles)	453	498	45	9.93%
Communications (phone, cell phone)	59	62	3	5.08%
Education (including books,exercises-books,pens,other studying tools and transportation)	428	471	43	10.05%
Medical/Medicine (paid by themselves)	1688	1857	169	10.01%
Costumes, beauty, shower, haircut, entertainment (movie, opera, games), restaurants	500	525	25	5.00%
Gifts (birth, marriage, death, etc)	68	71	3	4.41%
Others	626	814	188	30.03%
Total annual expenditure	883	945	62	7.02%
	6678	7465	787	11.78%

## 7.4.2 General Analysis of the Income and Expenditure

The general analysis of income and expenditure is summarized in the Table 7-8.

Table 7-8 General Analysis of Income and Expenditure of APs Before and After Farmland-forest Conversion

Item	Before farmland-forest conversion(yuan))	Amount of 2008 ( yuan )	Net increasing amount(yuan)	Increasing rate
Average total income	8671	9859	1188	13.7%
Average consumptive expenditure	6678	7465	787	11.8%
Average net income	1993	2394	401	20.1%

Through the above analysis,we can clearly see that the effective alternative livelihood plan has improved the net income of APs ,although the agricutral income decreased, the income from other channel has obviously been enhanced,which ensured the income recovery of the APs.

Through the analysis of the data collected above,most of the expenditure increased,which indicated the living quality of the APs have been improved.

Through sorting out the income and expenditure data, we can see the average income, expenditure and average net income has been improved after farmland-forest conversion, therefore, the living standard of APs has been greatly improved.

## 8 Consultation, Participation and Complaint and Appeal

### 8.1 Participation and Consultation

The resettlement agency had developed the resettlement plan, which effectively reduces dissatisfaction and dispute and help to realize the objective of appropriately rehabilitating the resettlers. The project paid high attention on the participation and consultation of the resettlers in the course of development and implementation of RP policies, alternative

livelihood plans and widely collected the opinions from the resettlers.

**While doing feasibility study in the project preparation stage , Luobei PMO and Luobei Forestry Bureau have consulted the suggestions and opinions from different county governments,people’s congress, political consultative conference, mass organization and representatives of the affected staffs on wetlands protection, conversion of farmland to forest as well as resettlement rehabilitation. Meetings were held with APs to clarify the policies, schedule of farmland-forest conversion, rehabilitation was conducted based on the APs’ willingness and rehabilitation tasks identified by the forest farm.**

## **8.2 Complaint and Appeal**

The project always pays an attention to the APs participation throughout the development and implementation of Resettlement Plan Framework and alternative livelihood plan, an open and transparent procedure for complaint and appeal was established to avoid the occurrence of major grievances. In addition, the complaint and appeal channel and procedures were clearly clarified (namely alternative livelihood planning group of forest farms,Luobei SPWPP farmland-forest conversion leading group and Heilongjiang Provincial SPWPP PMO); The APs will be informed about the above complaint and appeal procedure through holding meetings or other approaches to understand that they have the rights of complaint and appeal.

## 9 Conclusions

Through a series of surveys and data analysis, the following monitoring conclusion is reached:

( 1 ) The functions of the resettlement agencies and their tasks, responsibilities and staffing under the project are clearly specified;. Various agencies are well equipped with telephone, fax machine, computer, vehicles and other equipments.

In the process of converting farmland into forest, the resettlement agencies had rehabilitated all the APs in priority. The documents like alternative livelihood plan were compiled, which helped all the farmland-forest conversion activities progress as scheduled.

( 2 ) Through verification and analysis, it is considered that relevant laws, regulations and policies adopted by the resettlement work are valid documents, no APs had any action of questioning the laws, regulations and policies adopted. Through monitoring, it is considered that the resettlement policy framework adopted by the resettlement work is appropriate.

( 3 ) The resettlement implementation progress got two years delayed compared with the original plan,mainly related with staffs rehabilitation. During the implementation, all APs had been well rehabilitated and stable income was obtained. Many occupational skill trainings were provided to all APs, their capacity had been strengthened and rapidly came into a good working status.

( 4 ) Implementation of the livelihood plan brought all APs stable income and increased year by year,in 2008 the average income of all APs is 9859 yuan, increased by 13.7% compared with the year of 2005 before farmland-forest conversion. The living standard of

all APs was greatly improved, compared with that before farmland-forest conversion; hence, the alternative livelihood plan is feasible.

( 5 ) Various institutions dealing with the resettlement work have established perfect complain and appeal, public participation and consultation mechanism. All APs are taking an active role in the consultation and participation of the overall resettlement work. So far, no complain and appeal has occurred.