

Environmental and Social Monitoring Report

Semi-Annual Report
December 2016

Viet Nam: Central Regions Rural Water Supply and Sanitation Sector Project

WATER SUPPLY AND SANITATION OF LONG THANH, KHANH THANH, VINH THANH AND TRUNG THANH COMMUNES, YEN THANH DISTRICT, NGHE AN PROVINCE

Prepared by The Joint Venture of CDM International Inc., Nippon Koei Co. Ltd. and Vinaconsult JSC for the Asian Development Bank.

CURRENCY EQUIVALENTS

(as of 2 December 2016)

Currency unit	–	dong (VND)
VND1.00	=	\$0000440
\$1.00	=	VND22714

ABBREVIATIONS

ADB	–	Asian Development Bank
AHs	–	affected households
APs	–	Affected Persons
CARC	–	Compensation Assistance Resettlement Committee
CSC	–	Design-Build Construction Supervision Consultant
CPC	–	Commune People's Committee
CPMU	–	Central Project Management Unit
CVWU	–	Communal Vietnam Women's Union
D&B	–	Design and Build
DARD	–	Department of Agriculture and Rural Development, Provincial
DONRE	–	Department of Natural Resources and Environment, Provincial
DPC	–	District People's Committee
EARF	–	Environmental Assessment and Review Framework
EC	–	Environmental Protection Commitment
EMP	–	Environmental Management Plan
EMoP	–	Environmental Monitoring Plan
EO	–	Environmental Officer
FS	–	Feasibility Study
GoV	–	Government of Vietnam
HHs	–	Households
IEE	–	Initial Environmental Examination
LARC	–	Land Acquisition and Resettlement Completion Report
LARP	–	Land Acquisition and Resettlement Plan
lpcd	–	Litters per capita per day
MARD	–	Ministry of Agriculture and Rural Development
MOH	–	Ministry of Health (BYT)
MONRE	–	Ministry of Natural Resources and Environment (BTNMT)
MOU	–	Memorandum of Understanding
NCERWASS	–	National Centre for Rural Water Supply and Environmental Sanitation
NGO	–	Non-governmental Organization
NOL	–	No Objection Letter
O&M	–	Operation and Maintenance
ODA	–	Official Development Assistance
OHS	–	Occupational Health and Safety
OU	–	Operational Unit
PCERWASS	–	Provincial Centre for Rural Water Supply and Environmental Sanitation
PIA	–	Project Implementation Assistance
PPC	–	Provincial People's Committee
PPMU	–	Provincial Project Management Unit
PVWU	–	Provincial Vietnam Women's Union
REA	–	Rapid Environmental Assessment

SAR	– Subproject Appraisal Report
SIEE	– Summary Initial Environmental Examination
SSO	– Subproject Site Office
VND	– Vietnam Dong
VWU	– Vietnam Women's Union
WSCC	– Water and Sanitation Commune Committee
WTP	– Water Treatment Plant

NOTE

In this report, "\$" refers to US dollars.

This environmental and social monitoring report is a document of the borrower. The views expressed herein do not necessarily represent those of ADB's Board of Directors, Management, or staff, and may be preliminary in nature.

In preparing any country program or strategy, financing any project, or by making any designation of or reference to a particular territory or geographic area in this document, the Asian Development Bank does not intend to make any judgments as to the legal or other status of any territory or area.

MINISTRY OF AGRICULTURE AND RURAL DEVELOPMENT
NATIONAL CENTRE FOR RURAL WATER SUPPLY AND
ENVIRONMENTAL SANITATION

CENTRAL REGION RURAL WATER SUPPLY AND
SANITATION SECTOR PROJECT

{ADB Loan No. 2609-VIE (SF)}

Safeguards Monitoring Report

JANUARY ÷ JUNE 2016

WATER SUPPLY AND SANITATION OF
LONG THANH, KHANH THANH, VINH THANH AND TRUNG THANH
COMMUNES, YEN THANH DISTRICT,
NGHE AN PROVINCE

Consulting Services
For
Project Implementation Assistance

The Joint Venture of
CDM International Inc., Nippon Koei Co. Ltd. and Vinaconsult JSC

October 2016

CENTRAL REGION RURAL WATER SUPPLY AND SANITATION SECTOR PROJECT

{ADB Loan No. 2609-VIE(SF)}

Safeguards Monitoring Report

JANUARY ÷ JUNE 2016

**WATER SUPPLY AND SANITATION OF
LONG THANH, KHANH THANH, VINH THANH AND TRUNG THANH
COMMUNES, YEN THANH DISTRICT,
NGHE AN PROVINCE**

PIA Consultant

CPMU

Esko Toivonen
Team Leader

Le Thieu Son
Director

This report has been prepared based on a combination of information provided by others and by the PIA Consultant. The PIA Consultant has to the extent reasonably possible validated and verified the accuracy of the information in the reports and appendices. To the best of the PIA Consultant's belief and knowledge, the included information is reasonably accurate and correct.

The Joint Venture of
CDM International Inc., Nippon Koei Co. Ltd. and Vinaconsult JSC

October 2016

Internal Quality Control

Project	Central Region Rural Water Supply and Sanitation Sector Project
Project No.	ADB Loan No. 2609-VIE (SF)
Client	National Centre For Rural Water Supply And Environmental Sanitation
Classification	Safeguards Monitoring Report
Name of report	Safeguards Monitoring Report Jul÷ Dec 2015 for Water Supply and Sanitation Subproject of Long Thanh, Khanh Thanh, Vinh Thanh and Trung Thanh Communes, Yen Thanh District, Nghe An Province
File name	VIE 2609 Yen Thanh- NA Safeguards Monitoring Report Jul- Dec 2015 EN
Persons in charge	
<i>Prepared by</i>	
	_____ Nguyen Thi Hong Phuong National Environmental Specialist
<i>Date</i> October 2016	_____ Nguyen Thi Hau National Resettlement Specialist
<i>Checked by</i>	
<i>Date</i> October 2016	_____ Nguyen Cong Thanh, Deputy Team Leader
<i>Approved for submission</i>	
<i>Date</i> October 2016	_____ Esko Toivonen, Team Leader
Distribution	
<i>Recipient</i>	CPMU
<i>Hard copy</i>	5 copies in English
<i>Soft copy</i>	VIE 2609 Yen Thanh NA Safeguards Monitoring Report Jan- Jun 2016 EN

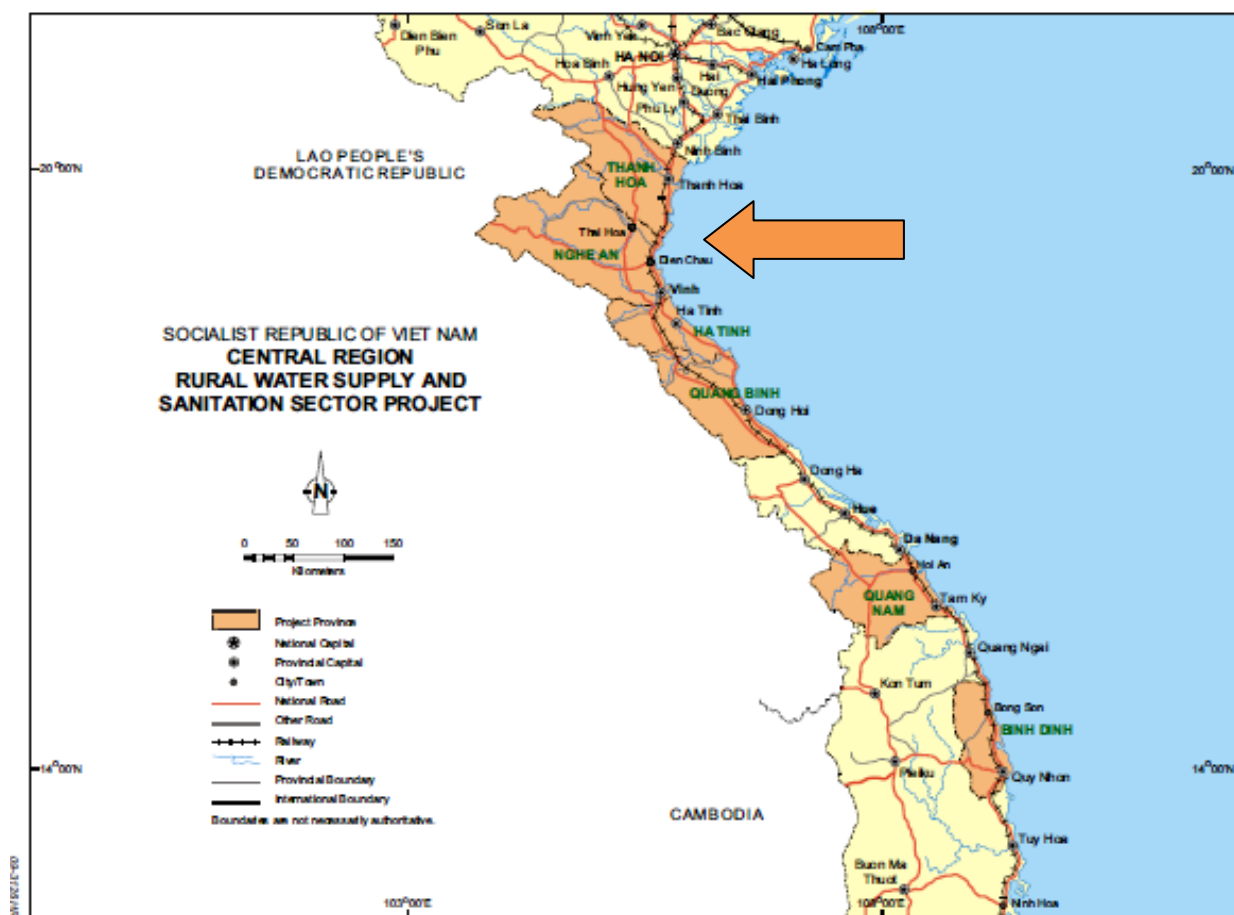


Figure 1 Location map of six Project Provinces of the central coastal region of Vietnam.

Preface

The Government of Vietnam and the Asian Development Bank (ADB) have agreed to implement the Central Region Rural Water Supply and Sanitation Sector Project (Project) scheduled to be completed by 31 December 2016. The Project has a total budget of US\$ 50 million and is expected to provide access to clean water and hygienic sanitation for about 200,000 rural people in 33 communes in the six coastal central region provinces of Vietnam: Thanh Hoa, Nghe An, Ha Tinh, Quang Binh, Quang Nam and Binh Dinh.

The Loan Agreement was signed on 2nd February 2010. On the 26th July 2011, the National Centre for Rural Water Supply and Environmental Sanitation (NCERWASS) of the Ministry of Agriculture and Rural Development (MARD) signed a Contract for Consulting Services for Project Implementation Assistance with CDM International Inc. in a joint venture with Nippon Koei Co. Ltd and national consultant Vinaconsult JSC (PIA Consultant). The PIA Consultant mobilized its team members on 25th August 2011.

This Safeguards Monitoring Report – January ÷ June 2016 covers main findings of the monitoring of safeguards issues of operation activities carried out during the reporting period from January to the end of June 2016. This report is based on review of quarterly records of the Provincial Project Management Unit (PPMU), desk review and observations made by PIA Consultant during supervision missions fielded on March, 23-24 and May, 15-17, 2016 to the Subproject area.

List of Abbreviations

ADB	Asian Development Bank
AH	Affected Household
AP	Affected Person
CARC	Compensation Assistance Resettlement Committee
CSC	Design-Build Construction Supervision Consultant
CPC	Commune People's Committee
CPMU	Central Project Management Unit
CVWU	Communal Vietnam Women's Union
D&B	Design and Build
DARD	Department of Agriculture and Rural Development, Provincial
DPC	District People's Committee
EARF	Environmental Assessment and Review Framework
EC	Environmental Protection Commitment
EIA	Environmental Impact Assessment
EMoP	Environmental Monitoring Plan
EMP	Environmental Management Plan
EO	Environmental Officer
FS	Feasibility Study
GoV	Government of Vietnam
IEE	Initial Environmental Examination
lpcd	liters per capita per day
LARC	Land Acquisition and Resettlement Completion Report
LARP	Land Acquisition and Resettlement Plan
MARD	Ministry of Agriculture and Rural Development
MOH	Ministry of Health
MONRE	Ministry of Natural Resources and Environment
MOU	Memorandum of Understanding
NCERWASS	National Centre for Rural Water Supply and Environmental Sanitation
NGO	Non-governmental Organization
O&M	Operation and Maintenance
ODA	Official Development Assistance
OHS	Occupational Health and Safety
OU	Operating Unit
PCERWASS	Provincial Centre for Rural Water Supply and Environmental Sanitation
PIA	Project Implementation Assistance
PIB	Project Information Booklet
PPC	Provincial People's Committee
PPE	Personal Protective Equipment
PPMU	Provincial Project Management Unit
Project	Central Region Rural Water Supply and Sanitation Sector Project

PVWU	Provincial Vietnam Women's Union
REA	Rapid Environmental Assessment
RWSS	Rural Water Supply and Sanitation
SAR	Subproject Appraisal Report
SIEE	Summary Initial Environmental Examination
SSO	Subproject Site Office
Subproject	Yen Thanh District, Nghe An Province, Batch-2 Subproject
VND	Vietnam Dong
VWU	Vietnam Women's Union
WSCC	Water and Sanitation Commune Committee
WSSS	Water Supply and Sanitation Subproject
WTP	Water Treatment Plant

Contents

Preface

List of Abbreviations

1	INTRODUCTION AND PROJECT OVERVIEW	1
1.1	Introduction.....	1
1.2	Subproject Overview and Progress	2
2	ENVIRONMENTAL PERFORMANCE MONITORING	4
2.1	EMP/EMoP Implementation and Compliance.....	4
2.2	Environmental Monitoring by CSC/PPMU	4
2.3	Monitoring Activities Carried out by PIA Consultant	5
2.4	Key Issues for Further Actions	6
3	INVOLUNTARY RESETTLEMENT PERFORMANCE MONITORING	7
3.1	Compliance with RP Requirements	7
3.2	Resettlement Monitoring by PPMU.....	9
3.3	Monitoring Activities carried out PIA Consultant.....	10
3.4	Issues for Further Action	10
4	OCCUPATIONAL HEALTH AND SAFETY (OHS) PERFORMANCE MONITORING ...	10
4.1	OHS for Workers	10
4.2	Public Safety	10
5	INFORMATION DISCLOSURE AND CAPAcITY BUILDING	11
5.1	Public Consultations, Meetings and Information Disclosure.....	11
5.1.1	Environmental Public Consultation and Information Disclosure	11
5.1.2	Resettlement Public Consultation and Information Disclosure.....	11
5.2	Training – Capacity Building.....	11
5.2.1	Environment	11
5.2.2	Resettlement	12
5.3	Press/Media Releases.....	12
6	GRIEVANCE REDRESS MECHANISM.....	12
6.1	Environment.....	12
6.2	Resettlement.....	12

7 CONCLUSION AND RECOMMENDATIONS12

List of Tables

Table 1	Nghe An Batch-2 Subproject Overview and Progress	2
Table 2	Basic Data of Nghe An Batch-2 Subproject.....	3
Table 3	Environmental Issues for Further Action.	6
Table 3	Summary of Compliance with RP Requirements.....	7
Table 4	LARP Issues for Further Action.....	10
Table 5	OHS Issues for Further Action.....	10

Annexes

Annex 1	Subproject Compliance with EMP Requirements
Annex 2	Raw water and treated water quality analyses
Annex 3	Photographs
Annex 4	IEE Addendum and Endorsement Letter
Annex 5	Documents of compensation payment to CPC of Long Thanh

1 INTRODUCTION AND PROJECT OVERVIEW

1.1 Introduction

The water supply and sanitation Batch-2 Subproject located in Long Thanh, Khanh Thanh, Vinh Thanh and Trung Thanh Communes, Yen Thanh District, Nghe An Province (Subproject) is one of the eight Batch-2 Subprojects of the Central Regions Rural Water Supply and Sanitation Sector Project (Project) to be implemented under the Loan Agreement No. 2609 - VIE (SF) between the Socialist Republic of Vietnam (GoV) and the Asian Development Bank (ADB).

The implementation of the Project will result in better health and living conditions of people living in rural areas in the Project provinces of Thanh Hoa, Nghe An, Ha Tinh, Quang Binh, Quang Nam and Binh Dinh. The Project will construct a piped water supply systems, and sanitation facilities and to promote safer hygiene practices by the commune's residents. The Project's components are the following: (i) Operational and sustainable piped water supply system; (ii) Improved household and public sanitation; (iii) Improvement of hygiene awareness; (iv) Strengthened sector planning and implementation capacity; and (v) Improved project management capacity.

In accordance with the Memorandum of Understanding (MOU) agreed between the ADB and the CPMU, the Nghe An Batch-2 Subproject needs to adhere to preparation of semi-annual safeguards monitoring reports. This semi-annual report covers issues in the first half-year of 2016.

The Subproject is designed to improve rural water supply and sanitation facilities and to promote safer hygiene practices by the rural communes. Water supply includes construction of piped water supply network with treatment facilities.

The Design-Build packages for Water Supply System and Sanitation of the Subproject commenced on December 30, 2014. The construction of the packages commenced in September , 2015.

1.2 Subproject Overview and Progress

Table 1 Nghe An Batch-2 Subproject Overview and Progress

Project Number and Title:	ADB Loan No. 2609-VIE (SF) Central Region Rural Water Supply and Sanitation Sector Project Subproject: Construction of Water Supply and Sanitation for Long Thanh, Khanh Thanh, Vinh Thanh and Trung Thanh Communes, Yen Thanh District, Nghe An Province	
Safeguards Category	Environment	B
	Involuntary Resettlement	B
	Indigenous People	C
Reporting period:	January 2016 - June 2016	
Last report date:	November 2015	
Key sub-project activities since last report:	<p>1) Construction Component</p> <ul style="list-style-type: none"> ❖ The Subproject of Long Thanh, Khanh Thanh, Vinh Thanh and Trung Thanh Communes, Yen Thanh District includes four construction packages: <ul style="list-style-type: none"> (i) Design-Build packages of water supply system : NA2/DB1.1/NCB, NA2/DB1.2/NCB, NA2/DB1.3/NCB; and (ii) Design-Build packages of sanitation: NA2/DB2/NCB. <p>2) Progress of Work</p> <p>Main items of water supply component:</p> <ul style="list-style-type: none"> (i) Design-Build of Head works and transmission pipelines (NA2/DB1.1/NCB) commenced on 08 September 2015: completed construction of all work items in head work area. Completed O&M Manual and training for O&M staff. (ii) Design-Buid of distribution network and household connection for Vinh Thanh and Khanh Thanh communes (NA2/DB1.2/NCB) commenced on 26 August 2015: completed construction of transmission, distribution, and service pipelines, completed 100% household connection (3,224 household connections). (iii) Design-Buid of distribution network and household connection for Long Thanh and hamlet 5, 6 and 7 of Trung Thanh communes (NA2/DB1.3/NCB) commenced on 26 August 	

Project Number and Title:	ADB Loan No. 2609-VIE (SF) Central Region Rural Water Supply and Sanitation Sector Project Subproject: Construction of Water Supply and Sanitation for Long Thanh, Khanh Thanh, Vinh Thanh and Trung Thanh Communes, Yen Thanh District, Nghe An Province
	<p>2015: completed construction of transmission, distribution, and service pipelines, completed 100% household connection (2,533 household connections).</p> <p>Main items of sanitation component:</p> <ul style="list-style-type: none"> (i) Public latrine: completed construction of 09 public latrines including 03 latrines at Vinh Thanh commune (CPC, Secondary school, and Kindergarten), 04 latrines at Long Thanh commune (CPC, Primary school area 1, Primary school area 2, and Hoang Ta Thon Secondary school), 01 latrine at Khanh Thanh Primary school, and 01 latrine at Trung Thanh Primary school; (ii) Household latrine substructure: completed construction and handing-over of 453 household latrine substructures, of which 369 poor households and 84 near-poor female-headed households where women is the sole income provider. According to initial survey, at first there were 488 poor households and near-poor female-headed households having demand for constructing latrine substructure, however, during implementation some households no longer demanding for construction of latrine substructure. <p>3) Changes of Surrounding Environment: The Subproject area is under construction. No major negative impacts.</p>
Report prepared by:	PIA consultant

Table 2 Basic Data of Nghe An Batch-2 Subproject.

No.	Contents	Data
1	Water Supply System Component	
	<ul style="list-style-type: none"> • Designed Population • Capacity • Water source • Length of Distribution network • Number of Service Connections 	<p>27,209 people</p> <p>3,500 m³/day</p> <p>Surface Water (from Irrigation Canal No.N6)</p> <p>134.2 km</p> <p>5,757 HHs</p>

2	Sanitation Component	
	<ul style="list-style-type: none"> Public Latrines Household's in-kind latrine substructures 	<p>9 units</p> <p>453 units</p>

2 ENVIRONMENTAL PERFORMANCE MONITORING

2.1 EMP/EMoP Implementation and Compliance

EMP/EMoP Implementation by D&B Contractor

During construction phase, the implementation of the EMP will be the responsibility of the D&B Contractor. The D&B Contractor's responsibility will include the appropriate and timely application of the mitigating measures stipulated in the approved EMP/EMoP. The application and implementation of the mitigation measures will provide the safeguards that will control, reduce if not eliminate unwanted effects during the Subproject implementation.

Regarding raw water quality, D&B Contractor is responsible for taking water samples and quality analyses once during Detail Design Stage to point out whether there are any changes of raw water quality needed to have adjustment to the water treatment process of the water supply scheme, and to establish the baseline raw water quality; and another in the end of construction when the WTP is already for operation to monitor any changes in raw water quality.

EMP/ EMoP Implementation by Operating Unit

During the O&M phase, the plant operating unit (OU) will be responsible for adherence to mitigation measures and activities stipulated in the EMP and EMoP plans which are primarily focused on safe operation of the WTP and distribution of treated water including (i) testing of raw water quality and treated water quality as well as (ii) monitoring of the quality of waste water and sludge as stipulated in EMoP and (iii) applying the health and safety regulations specified in the EMP. The operators will also need to carry out O&M procedures in accordance with the O&M manual.

2.2 Environmental Monitoring by CSC/PPMU

During Subproject preparation phase, the PPMU/ EO is responsible for ensuring that all EMP and EMoP requirements are included in the bidding documents and the contracts are followed by the contractors. The templates for D&B construction package and CSC package in the bidding documents and the contract documents prepared by PIA Consultant have already included EMP and EMoP compliance requirements and should be used for all of the Subprojects.

During construction phase, the inspection, evaluation and recording of compliance to the EMP and EMoP as implemented by the contractors is among the tasks undertaken by the Construction Supervision Consultant (CSC) in the field with the assistance of the PIA Consultant. The CSC carries out weekly and monthly inspections and maintain records of the D&B Contractor's mitigating measures and activities prescribed in the approved EMP and EMoP of the Subproject. The responsibilities of CSC cover the period to the end of the commissioning stage including certifying of construction materials, equipment and items and final checking and acceptance for handing over for operation.

The inspection and evaluation records have been consolidated by the CSC in their Quarterly Environmental Monitoring Report. The CSC's collation and synthesis of the D&B Contractors' compliance to the requirements of the EMP and EMoP have been summarized in matrix attached with the report to be submitted to CPMU and PIA Consultant within 15 days after the end of each quarter.

During O&M phase, PPMU's Environmental Officer (EO) will be responsible for monitoring the OU compliance to the EMP and EMoP, as well as consolidating all the records of the plant operator on laboratory analysis and health and safety issues, and quarterly reporting to the CPMU and PIA Consultant within 15 days after the end of each quarter.

2.3 Monitoring Activities Carried out by PIA Consultant

In the first half-year of 2016, the PIA Consultant has provided support to CPMU and PPMUs in terms of environmental documentation preparation, field visits for supervision and assistance, and information verification to ensure all the environment related provisions/requirements are followed.

In preparation for environmental assessment of batch-2 subprojects, PIA Consultant has prepared IEE reports based on (i) the environmental documents prepared by FS consultants and PPMUs and (ii) field visits carried out by PIA Consultant's Environmental Specialists to investigate and validate baseline environmental conditions of the proposed Batch-2 subprojects. The IEE reports of 08 batch-2 Subprojects have been issued Conditional Approval from the ADB. The EMPs approved by ADB have been also incorporated in the FS reports approved by the PPCs and in the Environmental Protection Commitments registered and accepted by the Subprojects' DPCs.

The templates of the bidding and contract documents with incorporated-EMP/EMoP plans were prepared by the PIA Consultant specialists and delivered to the PPMU. Subsequent monitoring of the PIA Consultant during bidding and contract process indicated that the EMP and EMoP plans and budget requirements have been included in the Subproject's bidding and bid documents and budgets, as well as in the Subproject's contract documents.

During the construction, the PIA Consultant has provided support and advices to the CSC and D&B Contractors in implementation of EMP/EMoP and assisted CPMU in compiling monitoring reports for submission to ADB.

During the first half-year of 2016, the PIA Consultant conducted two field trips to the Subproject on March, 23-24 and May, 15-17, 2016. The on-site visits were made to check the progress and quality of the construction works and compliance with contract documents including safeguards issues. Meeting with PPMU, CSC and D-B Contractor staff was held afterward to give them recommendation/advices to the Subproject implementation and to have discussion or find resolution to the rising issues. Specific site visits to monitor the environmental compliance of Pilot Subprojects focused on the following:

- (i) Validating physical progress of the construction works and pipe laying activities on routes of the designed pipeline network and point out non-compliance with the approved EMP and EMoP (e.g. Realignment of pipelines/distribution lines to avoid cultural/ historic structures or cutting down big trees, and relocation of construction sites);
- (i) Examining safety of the construction workers and the public;
- (ii) Inspection of the environmental condition and sanitation of construction sites;

- (iii) Inspection of construction diaries and record keeping at the construction sites;
- (iv) Random spot checking of households and public latrines; and
- (v) Checking the Subprojects' construction works; gathering and collation of environmental monitoring reports; and analyzing the compliance of the Pilot Subprojects as defined in the Subproject's EMP and EMoP.

The collation of the OU's quarterly monitoring reports and PIA Consultant's review on the assessment of the safeguard compliance to the requirements of the EMP and EMoP is summarized in environmental performance matrix of the Subproject attached with this report as an *Annex 1*.

2.4 Key Issues for Further Actions

Table 3 Environmental Issues for Further Action.

Issue	Required Action	Responsibility and Timing	Resolution
Old Issues from Previous Reports: none			
New Issues from This Report			
Level of suspended solids in the raw water quality analysis is higher than allowed (85mg/l vs 30 mg/l).	The PPMU/ OU to continue monitoring raw water quality closely and operate WTP to ensure treated water quality.	The PPMU/ OU to adjust treatment dosing and operation of WTP to ensure treated water meets drinking water quality QCVN 01:2009/BYT.	

3 INVOLUNTARY RESETTLEMENT PERFORMANCE MONITORING

3.1 Compliance with RP Requirements

The draft LARP of Yen Thanh Subproject, Nghe An Province has been prepared and submitted to ADB as Volume 5 of Subproject Appraisal Report and has been approved on December 2014.

The draft LARP has to be updated after the detailed engineering design was approved by local competent authorities on 14 April 2015. PPMU of Nghe An has cooperated with Compensation Assistance Resettlement Committee (CARC) to carry out the activities to update the LARP as described in the following sections.

Table 4 Summary of Compliance with RP Requirements.

RP Requirements	Compliance status Yes/No/Partial	Comment or Reasons for Compliance, Partial Compliance/Non-Compliance	Issues for Further Action 1
Establishment of personnel in PMU/PIU	Yes	The Compensation Assistance Resettlement Committee (CARC) established according to decision No 1971/QD-UBND dated 08 May 2014.	
Public consultation and socialization process	Yes	<ul style="list-style-type: none"> There was 4 public consultations during preparation phase, including: <ul style="list-style-type: none"> + The first consultation meeting with the people in four communes were held on May 8 and 9, 2014, separately with each commune by PPMU and FS consultant; + The second consultation meeting with communal mass organizations was held on 12 August, 2014 by PPMU and FS consultant; 	

RP Requirements	Compliance status Yes/No/Partial	Comment or Reasons for Compliance, Partial Compliance/Non-Compliance	Issues for Further Action 1
		<ul style="list-style-type: none"> + The third consultation meeting with Farmers in downstream of Canal N6 on 15 August 2014 + The forth consultation meeting with CPC, communal mass organizations and households was held on 24 November, 2014 by PPMU • There were 2 public consultations during project implementation with affected households and CPC of Long Thanh. + The first consultation meeting with 02 AHs on 16 April 2015 + the second consultation meeting was held on 18 April 2015 to meet CPC of Long Thanh • Socio-economic survey is not required because all land is public land has no households are affected by subproject. 	
Land area to be acquired is identified and finalised	Yes	<p>DMS has been conducted from 15 to 17 April 2015 by PPMU and CARC after detailed designed approved on 15 April 2015 by PPC of Nghe An.</p> <ul style="list-style-type: none"> • Total of permanently acquired land is 50,584 m2, all is public land managed by CPC of Long Thanh • Total of temporarily acquired land is 15,918 m2, all is public land managed by CPC of Long Thanh 	
Land acquisition completed	Yes	The land has been acquired completely and handed over with presence of PPMU, CPC of Long Thanh, construction contractor and construction supervision consultant on 14 September 2015	
Establishment of Resettlement Site(s)	Not applicable	All land is public land, no household is effected or relocated	
Compensation payments for affected assets is completed	Not yet	<p>Compensation for CPC of Long Thanh and CARC is 2,801,120,000 VND. Out of which</p> <ul style="list-style-type: none"> + Tree: 23,940,000 VND + Structures: 145,444,620 VND + Graves: 518,000 VND + Supporting allowance of land : 2,042,100,000 	

RP Requirements	Compliance status Yes/No/Partial	Comment or Reasons for Compliance, Partial Compliance/Non-Compliance	Issues for Further Action 1
		VND + Administration cost for CARC: 56,600,000 VND + Detailed land mapping of the project area: 15,000,000 VND	
Transport assistance for relocating affected households	Not applicable	All land is public land, no household is effected or relocated	
Additional assistance to vulnerable affected household	Not applicable	All land is public land, no household is effected or relocated	
Income Restoration Program	Not triggered	All land is public land, no household is effected or relocated	
Temporary impacts have been addressed (affected properties restored to at least pre-project conditions)	None	All land is public land, no household is effected or relocated	
Capacity building activities	Yes	Member of PPMU and District CARC of Yen Thanh attended to the Training course on “ADB's social safeguard policies on environment and resettlement” from 2 April to 4 April, 2014 in Quang Nam province.	

3.2 Resettlement Monitoring by PPMU

The construction has commenced in September 2015. PPMU has cooperated with CSC to supervise the land acquisition boundary during construction to ensure that adjacent land area has not been effected.

All effected graves have been exhumed and buried again in other graveyard in Long Thanh commune.

3.3 Monitoring Activities carried out PIA Consultant

The PIA Consultant conducted two field trips to the Subproject on March, 23-24 and May, 15-17, 2016. The on-site visit was made to check construction sites. All construction has been carried out within the land boundaries and no claims have been raised by people in the subproject area.

3.4 Issues for Further Action

Table 5 LARP Issues for Further Action.

Issue	Required Action	Responsibility and Timing	Resolution
Old Issues from Previous Reports			
None			
New Issues from This Report			
Land acquisition and Resettlement Completion Report	After complete the construction	PPMU, CPMU, PIA Consultant and ADB	

4 OCCUPATIONAL HEALTH AND SAFETY (OHS) PERFORMANCE MONITORING

The Occupational, Health and Safety (OHS) Performance has been monitored for the public and the workers.

4.1 OHS for Workers

Before construction, the construction site was surveyed and cleared of bombs and unexploded ordnance by Nghe An military command. The following issues related to OHS for workers have been identified:

Table 6 OHS Issues for Further Action

Issue	Required Action	Responsibility and Timing	Resolution
Old Issues from Previous Reports:			
Some workers occasionally did not use PPE (hard hats and protective footwear) when working at the construction site	Contractor to provide PPE and ask workers to wear PPE at work	Contractors to implement as soon as possible CSC to supervise	
New Issues from This Report: none			

4.2 Public Safety

No public safety issues have been reported or identified.

5 INFORMATION DISCLOSURE AND CAPACITY BUILDING

5.1 Public Consultations, Meetings and Information Disclosure

5.1.1 Environmental Public Consultation and Information Disclosure

There are two public consultations on environmental issues to be implemented for each of the Subproject. The 1st public consultation was held during FS preparation. The 2nd public consultation was held on 18 August 2015 before construction commencement in order to inform the local people of at least: (1) commencement time of construction, (ii) duration of construction, (iii) EMP and EMoP requirements and responsibilities, (iv) introduction of Subproject site office, contact details and telephone numbers of contractors, CSCs and PPMU staff. The approved IEE report and SIEE report have been disclosed on the information boards of the related CPCs (*see annex 4*) and the soft copies of the full IEE reports are stored in computers by CPC staff and shall be disclosed to any third party if requested.

Updates of the Subproject information will also be disseminated to all the beneficiaries through the loudspeaker system of the Subproject communes as well as over activities of the Water and Sanitation Commune Committee (WSCC) members and the Health and Sanitation Promoters (HSPs).

5.1.2 Resettlement Public Consultation and Information Disclosure

There are total 6 public consultations, out of which, 4 public consultations were carried out during preparation phase and 2 public consultations were conducted for updating LARP.

In the meeting on 16 April 2015 with two households whose land should be acquired according to the basic design, they were informed their land area will be excluded from land acquisition that based on the approved detailed engineering design.

In the meeting on 18 April 2015 with CPC of Long Thanh, several copies of the information booklets were distributed to the participants. The CPC of Long Thanh has pinned the PIB on to the notice of CPC office for disclosure to the community. The Project Information Booklet (PIB) was in Vietnamese language containing major information on the subproject implementation, resettlement policies and principles.

The draft Updated LARP has been disclosed on 20 April 2015 to CPC of Long Thanh. ADB has approved conditionally the Updated LARP of Yen Thanh subproject on 24 August 2015 and the approved Updated LARP has been disclosed on the notice boards of CPC of Long Thanh on 25 August 2015.

5.2 Training – Capacity Building

5.2.1 Environment

To improve environmental monitoring capacity of commune environmental officers, WSCCs and HSPs for Batch 2 subprojects, PIA consultant organized training courses on environmental monitoring during project implementation for WSCCs and HSPs in Vinh city, Nghe An province on 23rd and 24th June 2015. This capacity building activity equipped 30 participants of this Subproject (23 male and 07 female) with solid knowledge about ADB's and GoV's environmental policies and environmental monitoring.

The PPMU staff and CSCs of Thanh Hoa, Nghe An, Quang Nam and Binh Dinh Batch-2 Subprojects attended 2nd training course on “Contract management and Construction quality supervision” organized by PIA Consultant on September 30 and October 1, 2015. There were 22 participants in the course (2 female)– including 4 participants of this Subproject. The training course aimed to improve the trainees’ capacity on management of contracts and construction quality, environmental management and monitoring, and preparation of progress reports etc. and also to enable the participants to transfer skills and knowledge to other offices/personnel after the course.

Apart from the above organized training courses, PIA Consultant has delivered on-the-job support via phones, emails and meetings when necessary as well as clarified any queries from CPMU and PPMUs.

5.2.2 Resettlement

During the reporting period none.

5.3 Press/Media Releases

In order to extend the publicity for the Project information, information of implementation status and lessons learnt from the ADB funded CRRWSSSP Project have been published and updated on the website of NCERWASS (<http://ncerwass.mard.gov.vn/>) since January 2014. These publications aim to share experiences of the Project activities and the Project’s progress among network of RWSSP, partners and interested stakeholders.

6 GRIEVANCE REDRESS MECHANISM

A Subproject site office has been established, and the Subproject’s information including grievance redress mechanisms on environment and resettlement have been disclosed to the public on the notice boards of the CPCs of the Subproject.

6.1 Environment

No written grievance has been received and no oral complaints have been reported.

6.2 Resettlement

No written grievance has been received and no oral complaints have been raised.

7 CONCLUSION AND RECOMMENDATIONS

EMP/EMoP Implementation

The results of the implementation of the EMP/EMoP have indicated that most of the requirements of the EMP and EMoP have been followed by the contractors and the PPMU. One remaining issue in the previous reporting period is that some workers occasionally did not use PPE (hard hats and protective footwear) when working at the construction site. PIA Consultant was requested PPMU and CSC to take action towards the Contractor to follow the OHS requirements and make sure that the workers wear personal protection equipment. One issue arising during this reporting period is that level of suspended solids in the raw water quality analysis is higher than allowed (85mg/l vs 30 mg/l). The PPMU/ OU was recommended to continue monitoring the raw water quality closely and to adjust the treatment chemicals to insure that treated water quality meet QCVN01/2009/BYT. The overall implementation/compliance of the Nghe An Batch-2 Subproject to the EMP/EMoP

is rated as satisfactory in this reporting period. In the commissioning phase, the PPMU and CSC shall enforce that the D&B Contractors will do their construction activities in compliance with the approved EMP/EMoP provisions, and timely conduct raw water, treated water and effluent sampling and quality analyses.

RP Implementation

Implementation of the resettlement activities of Yen Thanh sub-project is rated as satisfactory and in line with the Project's resettlement framework.

Annex 1 Subproject Compliance with EMP Requirements

(i) Summary of Subproject compliance with EMP requirements

EMP Requirements (Mitigation Measures)	Compliance Status (Yes, No, Partial)	Comment or Reasons for Non-Compliance	Issues for Further Action
(1)	(2)	(3)	(4)
I. PRE-CONSTRUCTION PHASE			
1. Preparing bid documents <ul style="list-style-type: none"> Include the EMP and estimated cost of mitigation measures in the Contractor's bid documents 	Yes		
2. Updating EMP <ul style="list-style-type: none"> Update mitigation measures defined in the approved EMP and incorporate them into the detailed design to minimize adverse environmental impacts 	Yes	There are no significant changes in the detailed design compared to the basic design that may materially affect the anticipated environmental impacts or the approved EMP/ EMoP (refer to Annex 54 for the enclosed addendum and endorsement letter).	
3. Survey of Unexploded bomb(s) in the Subproject area <ul style="list-style-type: none"> Establish safe buffer zone during disarmament, proper fencing, protective barriers, sufficient signal, site supervisors and information disclosure. 	Yes	The Subproject site had been disarmed of unexploded bombs and ordnance in 2012 under the Project "Clearance of Unexploded Ordnance/Explosive Remnants of War - Services on Nghe An Province for 2010 -2015".	

(ii) Summary of Subproject compliance with EMoP requirements

EMoP Requirements (Mitigation Measures)	Compliance Status (Yes, No, Partial)	Comment or Reasons for Non-Compliance	Issues for Further Action
(1)	(2)	(3)	(4)
I. PRE-CONSTRUCTION PHASE			
1. Baseline Data: <ul style="list-style-type: none"> Raw (surface) water quality 	Yes	The test of surface water quality was taken on January 9, 2015.	
2. Unexploded bomb(s) in the Subproject area	Yes	The Subproject site had been cleared of unexploded bombs and ordnance in a previous project.	
II. CONSTRUCTION PHASE			
1. Raw ground water quality analysis	Partial.	Raw water quality was tested on 17 March 2016. However, level of suspended solids in the raw water quality analysis is higher than allowed (80mg/l vs 30 mg/l).	The PPMU to request the Contractor to continue monitoring the raw water quality regularly and adjust the treatment technology to ensure treated water meets QCVN 01: 2009/BYT for drinking water if necessary.
2. Land clearing, grading and excavation <ul style="list-style-type: none"> Schedule construction during dry months; Supervision and proper implementation of 	Yes		

EMoP Requirements (Mitigation Measures)	Compliance Status (Yes, No, Partial)	Comment or Reasons for Non-Compliance	Issues for Further Action
(1)	(2)	(3)	(4)
<p>construction activities.</p> <ul style="list-style-type: none"> • Re-plant trees and re-seeding of indigenous grasses at the end of/or completion of construction activities. • Cover exposed soil from diggings and stock piles and soil during the rainy days. • Disposal sites must be selected and approved before construction • Restoration of existing road right after completion of each construction item • Schedule transport and hauling of construction materials during light traffic hours. Arrange adequate traffic detour, and provide sufficient signal & warning lights. • Regularly spray water on dry and exposed soil in construction site and along the road; • Trailer-truck hauling and transporting construction materials must be covered with canvas • Tires and body of vehicles must be washed with water when returning to public roads from WTP construction site. 	<p>Yes</p> <p>Yes</p> <p>Yes. The regulated disposal sites are located in Khanh Thanh and Vinh Thanh communes.</p> <p>Yes</p> <p>Yes</p> <p>Yes</p> <p>Yes</p> <p>Yes</p>		

EMoP Requirements (Mitigation Measures)	Compliance Status (Yes, No, Partial)	Comment or Reasons for Non-Compliance	Issues for Further Action
(1)	(2)	(3)	(4)
Noise & vibration <ul style="list-style-type: none"> Contractor to maintain equipment and transport vehicles in proper working order and ensure that muffler and other measures are installed to reduce noise in compliance with TCVN 5948:1999/BTNMT As much as possible implement working hours between 07:00 and 17:00; 	<p>Yes</p> <p>Yes</p>		
Emission from construction vehicles, equipment and machinery <ul style="list-style-type: none"> The discharge standards promulgated under the Environmental Protection Law 2005 will be strictly adhered. All vehicles, equipment, and machinery used for construction will conform to the relevant Vietnam standards. All vehicles, equipment and machinery used for construction will be regularly maintained to ensure that pollution emission levels comply with the relevant regulations, namely QCVN 05:2009. 	<p>Yes</p> <p>Yes</p>		
3. Construction camps and workers' activities <ul style="list-style-type: none"> Construction of temporary latrines, at a distance from the proposed wells for the WTP. Regular collection and disposal of garbage to the proper disposal site. 	<p>Yes. No construction camps, workers hire nearby residential houses to live and for sanitary activities. Oily rags are stored in</p>		

EMoP Requirements (Mitigation Measures)	Compliance Status (Yes, No, Partial)	Comment or Reasons for Non-Compliance	Issues for Further Action
(1)	(2)	(3)	(4)
<ul style="list-style-type: none"> Ensure proper handling of oil and fuel materials. Fuel storage will be in proper bounded areas. Fuel storage and refilling areas will be located at least 300 m from all cross drainage structures and important water bodies, or as directed by the consultant. Any spillage oil shall be neutralized by a neutralizer, and reported to the CSC consultant. 	<p>containers and reused by contractors in other projects or collected by regulated collectors.</p> <p>Yes</p> <p>Yes</p> <p>Yes - No spillage of oil occurred</p>		
<p>Environment, health and safety</p> <ul style="list-style-type: none"> Ensure proper fencing and protective barriers in construction area. Sufficient signal and information disclosure about the subproject must be conducted. Construction workers and supervisors must be equipped with protective clothes gears in the construction site. Maximize employment of local laborers who will live at home during construction. Disseminate information on the risks of socially and sexually transmitted infections, including HIV 	<p>Yes</p> <p>Partial</p> <p>Yes</p> <p>Partially</p>	<p>Some workers occasionally did not use PPE (hard hats and protective footwear) when working at the construction site</p> <p>Though information dissemination on the risks of socially and sexually transmitted</p>	<p>Contractors to provide PPE and ask workers to use PPE.</p>


EMoP Requirements (Mitigation Measures)	Compliance Status (Yes, No, Partial)	Comment or Reasons for Non-Compliance	Issues for Further Action
(1)	(2)	(3)	(4)
transmission, to their employees, temporary laborers, and subcontractors during Subproject implementation.		diseases have been reported to be carried out, no evidence on information dissemination on printed materials such as fliers or postal and no photos has been received.	
4. Cultural/historical site <ul style="list-style-type: none"> The memorial site of Uncle Ho's visit to Vinh Thanh commune, Nguyen Nhu Ancestral Oratory and Hao Kiet Temple (Vinh Thanh commune) Nguyen Van Dai Ton Ancestral Oratory and Hoang Ta Thon Temple (Long Thanh commune) Nguyen Xuan Dai Ton Ancestral Oratory and Phan Dinh Ancestral Oratory (Khanh Thanh commune) 	Realignment of water pipeline/distribution lines and relocation of proposed construction sites - Yes		
5. Chances of finding social/cultural/religious/archaeological items <p>Chances of finding social/cultural/ religious or archaeological items during excavation and pipe lining</p> <ul style="list-style-type: none"> Immediately inform competent agencies of suspected social/ cultural/ religious or archaeological items and stop all excavation activities that may potentially affect the items. 	No social/cultural/ religious or archaeological items has been found during excavation or pipe lining		

EMoP Requirements (Mitigation Measures)	Compliance Status (Yes, No, Partial)	Comment or Reasons for Non- Compliance	Issues for Further Action
(1)	(2)	(3)	(4)
<ul style="list-style-type: none"> Set up work stoppage and sign boards to prevent unauthorized trespassing. 			
6. Responses to Natural Disasters and Climate Change <ul style="list-style-type: none"> A responsive plan to mitigate natural disasters during construction needs to be prepared to protect equipment and structure. Installation of pipeline during the flooding season should be avoided. Pipelines must be installed and reinforced properly in the flood-prone areas of the Subproject communes. 	<p>Yes</p> <p>Yes</p>		

Annex 2 Raw water and treated water quality analyses

Original

Raw water quality analysis on 17 March 2016



DOANH NGHIỆP KHOA HỌC VÀ CÔNG NGHỆ
CÔNG TY CỔ PHẦN PHÁT TRIỂN CÔNG NGHỆ CAO MÔI TRƯỜNG
Địa chỉ: 18 Hoàng Quốc Việt, Cầu Giấy, Hà Nội
ĐT: 04, 38364152 Fax: 04, 37561352
-----000-----

EHTD.,JSC

PHIẾU KẾT QUẢ PHÂN TÍCH
Số: 189 /XNN-CNC 2016

Đơn vị gửi mẫu: Liên danh công ty cổ phần Đại Việt - Công ty TNHH Hồng Đào - Công ty CP Môi trường Nam Việt.
Loại mẫu nước : Mẫu nước mặt
Địa điểm lấy mẫu: Tại cống lấy nước trên kênh N6 tại lý trình K4+974 thuộc hệ thống kênh thủy nông Bắc tại xã Long Thành, huyện Yên Thành, Tỉnh Nghệ An.
Ngày nhận mẫu : 17/03/2016 Ngày trả kết quả : 25/03/2016
Tình trạng/ đặc điểm mẫu: Bình thường Số lượng mẫu : 01 mẫu

STT	Chỉ tiêu	Đơn vị	Kết quả phân tích	Giới hạn cho phép QCVN 08:2008/BTNMT (Cột A2)
1	pH		7,5	6 - 8,5
2	Hàm lượng ô xy hoà tan	mg/l	4,95	≥5
3	Cặn lơ lửng	mg/l	85	30
4	Amôni (NH ₄ ⁺)	mg/l	0,13	0,2
5	Nitrit (NO ₂ ⁻)	mg/l	0,01	0,02
6	Nitrat (NO ₃ ⁻)	mg/l	0,5	5
7	Fe tổng số	mg/l	0,6	1
8	COD	mg/l	8	15
9	BOD ₅	mg/l	5,0	6
10	Clorua (Cl ⁻)	mg/l	12	400
11	Asen (As)	mg/l	<0,005	0,02
12	Florua	mg/l	0,3	1,5
13	Photphat	mg/l	0,07	0,2
14	Cyanua	mg/l	0,005	0,01
15	Cadimi	mg/l	<0,0002	0,005
16	Chì	mg/l	0,005	0,02
17	Chất hoạt động bề mặt	mg/l	0,08	0,2
18	Crom III	mg/l	0,06	0,1
19	Crom VI	mg/l	<0,01	0,2
20	Kẽm	mg/l	0,02	1

1. Kết quả này chỉ có giá trị đối với mẫu thử do khách hàng đưa tới

2. Không được trích sao một phần kết quả này nếu không được sự đồng ý của Công ty CP Phát triển Công nghệ cao Môi trường.

3. Mẫu này sẽ được hủy trong vòng 7 ngày (mẫu nước) và 20 ngày (mẫu đất) kể từ ngày trả kết quả nếu không có sự phản hồi nào từ khách hàng

STT	Chỉ tiêu	Đơn vị	Kết quả phân tích	Giới hạn cho phép QCVN 08:2008/BTNMT (Cột A2)
21	Đồng	mg/l	0,02	0,2
22	Niken	mg/l	0,007	0,1
23	Phenol	mg/l	<0,001	0,005
24	Thủy ngân	mg/l	<0,0003	0,001
25	Tổng Coliform	MPN/100ml	1000	5000
26	E.Coli	MPN/100ml	20	50

Ghi chú: QCVN 08: 2008/BTNMT là Quy chuẩn kỹ thuật quốc gia về chất lượng nước mặt được ban hành kèm theo Quyết định số 16/2008/QĐ – BTNMT ngày 31 tháng 12 năm 2008

Hà Nội, ngày 25 tháng 03 năm 2016

T/M NHÓM KIỂM NGHIỆM

Th. Trương Hồng Thắm

ThS. Trương Hồng Thắm

GIAM ĐỐC

Nguyễn Bằng Giang

Nguyễn Bằng Giang

- Kết quả này chỉ có giá trị đối với mẫu thử do khách hàng đưa tới
- Không được trích sao một phần kết quả này nếu không được sự đồng ý của Công ty CP Phát triển Công nghệ cao Môi trường.
- Mẫu này sẽ được hủy trong vòng 7 ngày (mẫu nước) và 20 ngày (mẫu đất) kể từ ngày trả kết quả nếu không có sự phản hồi nào từ khách hàng

Translation: Raw water quality analysis on 17 March 2016

	Parameter	Unit	Raw surface water	Limiting value set in QCVN 08:2008/ BTNMT, column A2
1	pH		7.5	56÷8.5
2	Dissolved oxygen	mg/l	4.95	≥5
3	Suspended solids (SS)	mg/l	85	30
4	Ammonium (NH ₄ ⁺)	mg/l	0.13	0.2
5	Nitrite (NO ₂ ⁻)	mg/l	0.01	0.02
6	Nitrate (NO ₃ ⁻)	mg/l	0.5	5
7	Total Fe	mg/l	0.6	1
8	COD	mg/l	8	15
9	BOD ₅	mg/l	5	6
10	Chloride (Cl ⁻)	mg/l	12	400
11	Arsenic (As)	mg/l	<0.005	0.02
12	Fluoride	mg/l	0.3	1.5
13	Phosphate	mg/l	0.07	0.2
14	Cyanide	mg/l	0.005	0.01
15	Cadmium (Cd)	mg/l	<0.0002	0.005
16	Lead (Pb)	mg/l	0.005	0.02
17	Surface active agent	mg/l	0.08	0.2
18	Chromium III	mg/l	0.06	0.1
19	Chromium IV	mg/l	<0.01	0.2
20	Zinc (Zn)	mg/l	0.02	1
21	Copper	mg/l	0.02	0.2
22	Nickel	mg/l	0.007	0.1
23	Phenol	mg/l	<0.001	0.005
24	Mercury	mg/l	<0.0003	0.001
25	E.coli	MPN/100ml	1000	5000
26	Coliforms	MPN/100ml	20	50

Original

Treated water quality analysis on 6 June 2016



DOANH NGHIỆP KHOA HỌC VÀ CÔNG NGHỆ
CÔNG TY CỔ PHẦN PHÁT TRIỂN CÔNG NGHỆ CAO MÔI TRƯỜNG
Địa chỉ: 18 Hoàng Quốc Việt, Cầu Giấy, Hà Nội
ĐT: 04, 38364152 Fax: 04, 37561352

-00-

EHTD.,JSC

PHIẾU KẾT QUẢ PHÂN TÍCH

Số: 332 /XNN-CNC 2016

Đơn vị gửi mẫu: Liên danh công ty cổ phần Đại Việt - Công ty TNHH Hồng Đào - Công ty CP Môi trường Nam Việt.

Loại mẫu nước : Mẫu nước sau xử lý

Địa điểm lấy mẫu: Tại bể chứa nước sạch xã Long Thành, huyện Yên Thành, Tỉnh Nghệ An.

Ngày nhận mẫu : 06/06/2016

Ngày trả kết quả : 12/06/2016

Tình trạng/ đặc điểm mẫu: Bình thường

Số lượng mẫu : 01 mẫu

STT	Chỉ tiêu	Đơn vị	Kết quả phân tích	Giới hạn cho phép QCVN 01:2009/BYT
1	Màu sắc	TCU	7	15
2	Mùi vị	-	Không có mùi, vị lạ	Không có mùi, vị lạ
3	Độ đục	NTU	0,5	2
4	pH	-	7,2	6,5-8,5
5	Độ cứng, tính theo CaCO ₃	mg/l	200	300
6	Tổng chất rắn hoà tan (TDS)	mg/l	55	1000
7	Hàm lượng Nhôm	mg/l	0,05	0,2
8	Hàm lượng Amoni	mg/l	0,5	3
9	Hàm lượng Asen tổng số	mg/l	0,005	0,01
10	Hàm lượng Clorua	mg/l	50	250
11	Hàm lượng Đồng tổng số(*)	mg/l	0,2	1
12	Hàm lượng Xianua	mg/l	0,01	0,07
13	Hàm lượng Florua	mg/l	0,4	1,5
14	Hàm lượng Hydro sunfur	mg/l	0,01	0,05
15	Hàm lượng Sắt tổng số (Fe ²⁺ + Fe ³⁺)	mg/l	0,1	0,3
16	Hàm lượng Chì	mg/l	0,005	0,01

- Kết quả này chỉ có giá trị đối với mẫu thử do khách hàng đưa tới
- Không được trích sao một phần kết quả này nếu không được sự đồng ý của Công ty CP Phát triển Công nghệ cao Môi trường.
- Mẫu này sẽ được hủy trong vòng 7 ngày (mẫu nước) và 20 ngày (mẫu đất) kể từ ngày trả kết quả nếu không có sự phản hồi nào từ khách hàng

STT	Chỉ tiêu	Đơn vị	Kết quả phân tích	Giới hạn cho phép QCVN 01:2009/BYT
17	Hàm lượng Mangan tổng số	mg/l	0,1	0,3
18	Hàm lượng Thủy ngân tổng số	mg/l	KPH	0,001
19	Hàm lượng Nitrat	mg/l	10	50
20	Hàm lượng Nitrit	mg/l	0,5	3
21	Hàm lượng Natri	mg/l	50	200
22	Hàm lượng Sunphát	mg/l	20	250
23	Hàm lượng Kẽm	mg/l	0,5	3
24	Chỉ số Pecmanganat	mg/l	1	2
25	Clo dư	mg/l	0,4	0,3 - 0,5
26	Coliform tổng số	Vi khuẩn/100ml	0	0
27	E.coli hoặc Coliform chịu nhiệt	Vi khuẩn/100ml	0	0

Ghi chú: QCVN 01: 2009/BYT là Quy chuẩn kỹ thuật quốc gia về chất lượng nước ăn uống.

Hà Nội, ngày 12 tháng 06 năm 2016

T/M NHÓM KIỂM NGHIỆM

ThS. Trương Hồng Thắm



Nguyễn Bằng Giang

- Kết quả này chỉ có giá trị đối với mẫu thử do khách hàng đưa tới
- Không được trích sao một phần kết quả này nếu không được sự đồng ý của Công ty CP Phát triển Công nghệ cao Môi trường.
- Mẫu này sẽ được hủy trong vòng 7 ngày (mẫu nước) và 20 ngày (mẫu đất) kể từ ngày trả kết quả nếu không có sự phản hồi nào từ khách hàng

Translation: Treated water quality on 6 June 2016

	Parameter	Unit	Treated water at treated water tank	Limiting value set in QCVN 01:2009/ BYT
1	Color		7	15
2	Odor	mg/l	No odor	No odor
3	Turbidity	mg/l	0.5	2
4	pH	mg/l	7.2	6.5-8.5
5	Hardness (calculating by CaCO ₃)	mg/l	200	300
6	Total dissolved solids	mg/l	55	1000
7	Aluminium	mg/l	0.05	0.2
8	Ammoniac (NH ₃)	mg/l	0.5	3
9	Cyanide	mg/l	0.005	0.2
10	Fluoride	mg/l	0.5	3
11	Hydrogen sulphide	mg/l	0.005	0.01
12	Total Fe (Fe ²⁺ + Fe ³⁺)	mg/l	50	250
13	Lead	mg/l	0.02	1
14	Cyanide	mg/l	0.01	0.07
15	Cadmium (Cd)	mg/l	0.1	0.3
16	Lead (Pb)	mg/l	0.005	0.01
17	Total manganese	mg/l	0.1	0.3
18	Total mercury	mg/l	BDL	0.001
19	Nitrate	mg/l	10	50
20	Nitrite	mg/l	0.5	3
21	Sodium	mg/l	50	200
22	Sulphate	mg/l	20	250
23	Zinc	mg/l	0.5	3
24	Permanganate	mg/l	1	2
25	Residual chloride	mg/l	0.4	0.3-0.5
26	Total coliforms	MPN/100ml	0	0
27	E.coli	MPN/100ml	0	0

Annex 3 Photographs



Figure 2 SIEE disclosure at Long Thanh CPC (May 2015)



Figure 3 SIEE disclosure at Khanh Thanh CPC (May 2015)



Figure 4 SIEE disclosure at Vinh Thanh CPC (May 2015)



Figure 5 SIEE disclosure at Trung Thanh CPC (May 2015)



Figure 6 Environmental training for WSCCs and HSPs in Vinh city (Jun. 2015)



Figure 7 2nd Public Consultation meeting (Aug. 2015)



Figure 8 The training course on “Contract and Construction Quality Management” (Sep. 2015)



Figure 9 Leveling WTP area (Oct. 2015)



Figure 10 Construction site office of NA2/DB1.2/NCB



Figure 11 Latrine for workers at construction site



Figure 12 Transmission pipeline installation (Oct. 2015)



Figure 13 Storage of HDPE pipes and fittings (Oct. 2015)



Figure 14 Latrine compartments of Long Thanh's CPC under construction (Oct. 2015)



Figure 15 HH Latrine sub-structure (Oct. 2015)



Figure 16 Workers laying pipe, one not wearing hard hat

Annex 4 IEE Addendum and Endorsement Letter

ADDENDUM to

IEE of The Subproject of Long Thanh, Khanh Thanh, Vinh Thanh and Trung Thanh Communes, Yen Thanh District, Nghe An Province

Comparison between Subproject Appraisal Report (SAR) and Detail Design (DD) configurations

1. Project Description

The Water Supply and Sanitation Subproject (WSSS) for Long Thanh, Khanh Thanh, Vinh Thanh and Trung Thanh Inter-communes, Yen Thanh District, Nghe An Province has been selected as one of eight Subprojects in Batch 2 of the Central Region Rural Water Supply and Sanitation Sector Project (CRRWSSSP) to be implemented under the Loan Agreement No. 2609 – VIE (SF) between the Socialist Republic of Vietnam (GoV) and the Asian Development Bank (ADB). The Subproject includes the construction and operation of a sustainable piped water supply system for 04 communes, and improved household hygiene and public sanitation in the Subproject area.

- Construction and operation of a piped water supply system for 4 communes with a capacity of 3,500 m³/d serving a population of approximately 31,000 people by 2025;
- Provision of in-kind grants for construction of substructure of household latrines to about 490 poor households and near-poor female-headed households with women being the sole income providers;
- Establishment of Sanitation Revolving Fund and provide about 1,400 loans to non-poor households for construction or rehabilitation of hygienic latrines;
- The subproject will provide hygienic septic tank latrines to 7 schools and 2 Commune People's Committee offices;
- Promotion of community participation in subproject implementation; carry out subproject CBA-IEC Plan to increase awareness of hygiene and sanitation among local people in the project area; formation and training of Water and Sanitation Commune Committee (WSCC), including recruitment and training of Health and Sanitation Promoters;
- Strengthened sector planning and implementation capacity by training of O&M staff for the water supply systems, improvement of M&E of water and sanitation investments through promotion of community involvement in data collection and evaluation, capacity building of provincial and commune VWUs to manage sanitation revolving fund; and

- Improved project management capacity by training and support of PPMU, provincial and commune WUs, WSCC and HSPs on: (i) contract management; (ii) financial management; (iii) social and gender awareness; (iv) social safeguards implementation and monitoring; (v) planning and budgeting; (vi) accounting and bookkeeping; (vii) procurement.

During the Subproject preparation phase the IEE report document including Environmental Management Plan (EMP) and Environmental Monitoring Plan (EMoP) was approved by the ADB as part of the Subproject Appraisal Report (SAR) of Nghe An batch-2 Water Supply and Sanitation Subproject. This addendum to the IEE of Nghe An batch-2 Subproject has been prepared based on the finalized Detailed Design and provides information on the changes in the subproject for updating the IEE.

2. Comparison of Changes

There are no changes in the locations of the WTP and the supply network. The changes are in the scope of permanent and temporary land acquisition and minor changes in compensations for loss of crops, trees, structures and graves. These changes do not have influence on the findings of the Subproject's approved IEE Report. The layout of the intake and WTP are shown in *Figure 1*.

The changes made to the Subproject during the Detailed Design and their impacts on environmental issues based on the Detailed Measurement Survey (DMS) and environmental assessment at the Subproject sites are shown in *Table 1*.

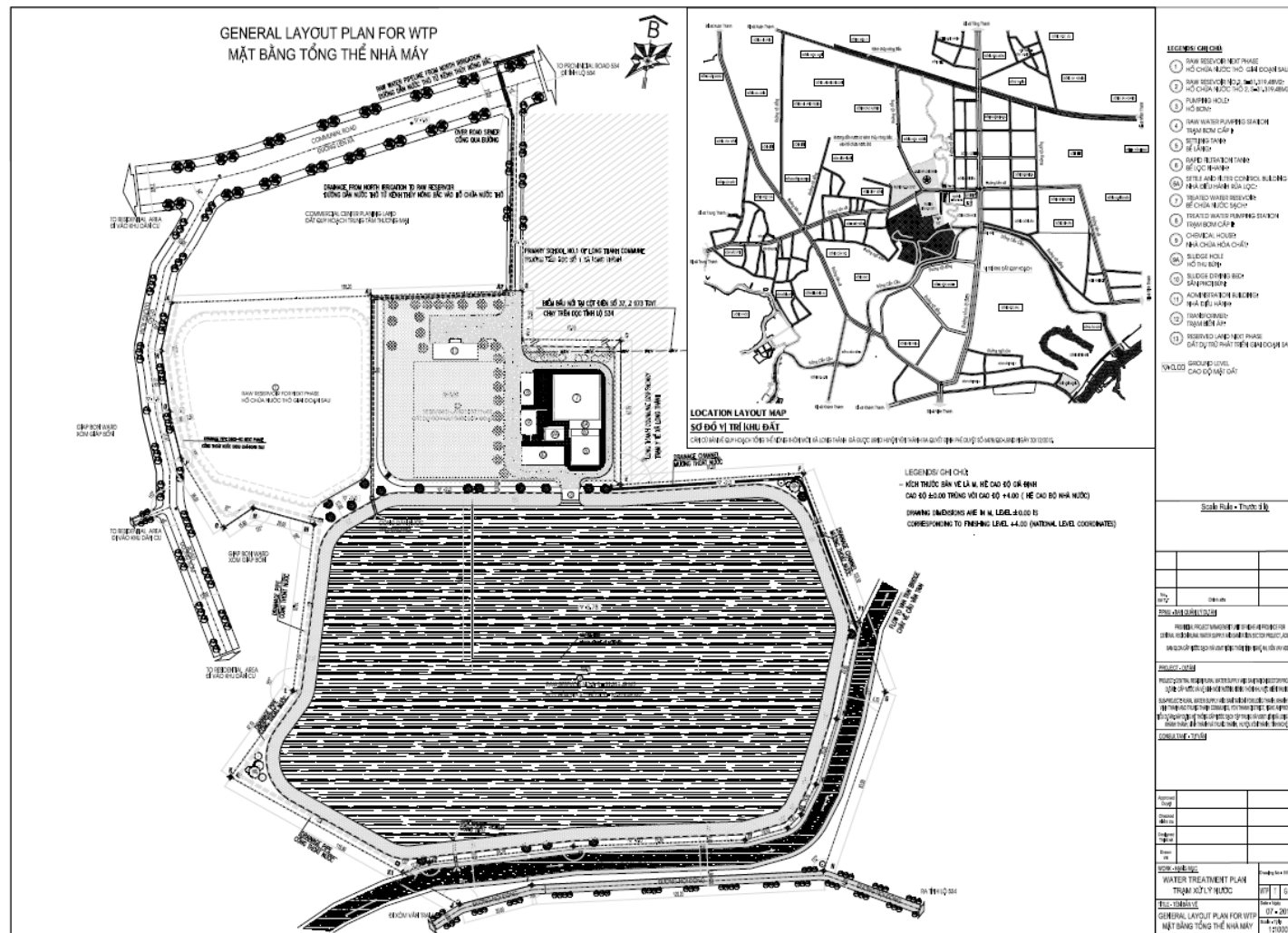




Table 7 Description of Changes made during Detailed Design by Subproject Component and their impacts on IEE Report.

Component/ item	Changes between SAR and DD&DMS (Yes/ No)	Clarification and Impacts on IEE Report
I. Head works (raw water source, reservoirs, access road)		
1. Raw water source	No	Still N6 irrigation channel.
2. Raw water reservoir No.1	Yes	To accommodate future expansion of the WTP the total public land and garden land permanently acquired has increased by roughly 2,700 m ² . The type of land is still mainly public agricultural land with only 50 m ² of garden land newly included. Thus, there are no changes to anticipated environmental impacts, the approved EMP and EMoP.
3. Raw water reservoir No.2	Yes	Similarly as for Reservoir No. 1, the total public agricultural land and garden land permanently acquired for reservoir 2 has increased by roughly 6,100 m ² . Thus, there are no changes to anticipated environmental impacts, the approved EMP and EMoP.
4. Access road	Yes	No more permanently acquired land and approximately 500 m ² of the existing access road will be temporarily acquired at this stage. Thus, there are no changes to anticipated environmental impacts, the approved EMP and EMoP.
II. Water Treatment Plant		

Component/ item	Changes between SAR and DD&DMS (Yes/ No)	Clarification and Impacts on IEE Report
1. Location	No	
2. Scope of land permanently acquired	Yes	Total agricultural public land permanently acquired has decreased by roughly 6,800 m ² due to calculation at the detailed design stage. Thus, there are no changes to the anticipated environmental impacts, the approved EMP and EMoP.
3. Scope of land temporarily acquired	No	No temporary land acquisition for WTP.
4. Capacity	No	
5. Treatment technology	No	The treatment technology is the same, yet the detailed engineering design has been adjusted due to the changes of land areas of two raw water reservoirs and WTP.
III. Raw water pipeline and clean water pipelines		
1. Area of service coverage	No	
2. Scope of land permanently acquired	No	No permanent land acquisition for installation of raw water and clean water pipelines
3. Scope of land temporarily acquired	Yes	Area of raw water pipeline temporarily acquired has decreased by roughly 1,000 m ² . Area of clean water pipeline temporarily acquired has decreased by approximately 34,000 m ² . Thus, there are no changes to the anticipated environmental impacts, the approved EMP and EMoP.
IV. Sanitation and drainage		

Component/ item	Changes between SAR and DD&DMS (Yes/ No)	Clarification and Impacts on IEE Report
components		
1. Public latrines	No	
2. Household latrines	Yes	Number of granted household latrines has decreased by 05 units. Thus, there are no changes to the anticipated environmental impacts, the approved EMP and EMoP.
V. Structures/ assets		
1. Private structures/ assets	No	There is no change to the number of graves to be exhumed and relocated. Thus, there are no changes to the anticipated environmental impacts, the approved EMP and EMoP.
2. Public structures/ assets	Yes	To construct raw water pipeline, the rock fences of Long Thanh CPC office and primary school will have to be demolished and compensated at replacement cost. There are insignificant changes in the volumes of materials to be compensated for the rock fences (less than 20% change in estimated volumes). Based on approved detailed engineering design, there will be no impact on utility, cultural or aesthetic structures. Thus, there are no changes to the anticipated environmental impacts, the approved EMP and EMoP.
VI. Other aspects		
1. New findings about the potentially affected fauna/ flora species or protected structures	No	No new findings about the potentially affected fauna/ flora species or protected structures

Component/ item	Changes between SAR and DD&DMS (Yes/ No)	Clarification and Impacts on IEE Report
2. Other newly found aspects that can potentially create significant impacts	No	No newly found aspects that can potentially create significant impacts

Based on the above assessment and findings, the Rapid Environmental Assessment (REA) checklist and the checklist for Preliminary Climate Risk Screening of the Subproject does not change after the Detailed Design stage.

3. Conclusion

The modifications made at the detailed design stage compared to the SAR preparation stage do not materially affect the findings of the IEE Report of Yen Thanh- Nghe An Subproject. As a result, the approved IEE including the EMP and EMoP of the aforementioned Subproject is still applied for the Subproject.

CENTRAL REGION RURAL WATER SUPPLY AND SANITATION SECTOR PROJECT

ADB Loan No. 2609-VIE (SF)

ENDORSEMENT

OF ADDENDUM TO THE IEE REPORT OF

WATER SUPPLY AND SANITATION OF

LONG THANH, KHANH THANH, VINH THANH AND TRUNG THANH INTER-COMMUNES - YEN THANH DISTRICT - NGHE AN PROVINCE


This endorsement has been prepared based on a combination of observations made during field visits and designs made by third parties. The CPMU, PPMU and PIA Consultant have to the extent reasonably possible validated and verified the information in the IEE report and its appendices. To the best of our belief and knowledge, the included information in this addendum is reasonably accurate and correct.

Nghe An PPMU



Phan Bui My
Director

PIA Consultant


Esko Toivonen
Team Leader

CPMU


Le Thieu Son
Director

Annex 5 Documents of compensation payment to CPC of Long Thanh

Không ghi vào khu vực này

GIẤY RÚT VỐN ĐẦU TƯ

Thanh toán ☐ Tam ứng ☒ Chuyển khoản ☒ Tiền mặt ☐

Mẫu số C3-01/NS
(TT số 08/2013/TT-BTC ngày 10/01/2013 của Bộ Tài chính)

Tên dự án: Dự án cấp nước sạch & VSMT nông thôn vùng miền Trung – Vay vốn ADB
Chủ đầu tư: Ban quản lý dự án cấp nước sạch & VSMT nông thôn Nghệ An – Vay vốn ADB
Mã cấp NS: 02
Mã CTMT, DA: 7350521
Số CKC, HĐTH

Tại KBNN: Tỉnh Nghệ An
Tên CTMT, DA: DA cấp nước sạch & VSMT nông thôn vùng miền Trung – Vay vốn ADB
Năm NS: 2015
Số CKC, HĐK
Căn cứ Giấy đề nghị thanh toán vốn đầu tư số:

Mã dự án: 7350521
Mã ĐVQHNS: 1114163

ngày 9/9/2015

Nội dung	Mã NDKT	Mã chương	Mã ngành KT	Mã nguồn NSNN	Năm KHV	Tổng số tiền	Chia ra	
							Nộp thuế	Thanh toán cho ĐV hưởng
(1)	(2)	(3)	(4)	(5)	(6)	(7)=(8)+(9)	(8)	(9)
Tam ứng chi phí bồi thường hỗ trợ và TĐC dự án cấp nước sạch & VSMT liên xã huyện Yên Thành	9251	412	134	42	2015	1.500.000.000		1.500.000.000
Tổng cộng						1.500.000.000		1.500.000.000

Tổng số tiền ghi bằng chữ: Một tỷ, năm trăm triệu đồng

Trong đó:

NỘP THUẾ:

Tên đơn vị (Người nộp thuế):

Mã số thuế:..... Mã NDKT:..... Mã chương:.....

Cơ quan quản lý thu:..... Mã CQ thu:.....

KBNN hạch toán khoản thu:

Số tiền nộp thuế (ghi bằng chữ) :

THANH TOÁN CHO ĐƠN VỊ HƯỞNG

Đơn vị nhận tiền: Ban quản lý xây dựng các công trình thuộc xã Long Thành huyện Yên Thành

Mã ĐVQHNS:

Địa chỉ: Xã Long Thành, huyện Yên Thành, tỉnh Nghệ An Mã CTMT, DA và HTCT: 92.001

Tài khoản: 3741 0 302 3323

Tại KBNN (NH): Kho bạc nhà nước huyện Yên Thành

Hoặc người lĩnh tiền mặt:..... Cấp ngày:..... Nơi cấp:

CMND số:

Số tiền thanh toán cho đơn vị hưởng (ghi bằng chữ): Một tỷ, năm trăm triệu đồng

PHẦN KBNN GHI

1. Nộp thuế:

Nợ TK:

Có TK:

Nợ TK:

Có TK:

Nợ TK:

Có TK:

Mã CQ thu:.....

Mã ĐBHC:.....

2. Thanh toán cho ĐV hưởng:

Nợ TK:

Có TK:

Nợ TK:

Có TK:

Nợ TK:

Có TK:

3. Vốn, nguồn cấp phát:

Nợ TK:

Có TK:

Mã ĐBHC:

Bộ phận kiểm soát chỉ của KBNN

Ngày 4 tháng 9 năm 2015

Kiểm soát *Phụ trách*

Lương Thị Huyền

Người lĩnh tiền mặt (Ký, ghi họ tên)

Chủ đầu tư (Ban QL dự án)

Ngày 4 tháng 9 năm 2015

Kế toán trưởng *Phan Bùi Mỹ*

Trần Văn Chiến

KBNN A ghi số và trả tiền ngày 10/9/2015

Thủ quỹ Kế toán Kế toán trưởng Giám đốc

Chủ đầu tư: Sở Nông nghiệp & PTNT Nghệ An
Đơn vị: Ban QLDA cấp nước sạch & VSMT NT Nghệ An
Mã ĐV có QH với NS: 1114163

Mẫu số: C31-BB
Ban hành theo TT số 195/2012/TT-BTC
ngày 15/11/2012 của Bộ trưởng Bộ Tài chính

PHIẾU CHI

Ngày 08. tháng 09 năm 2015

Quyển số

Số:

Nợ: 241127

Có: 1111

Họ, tên người nhận tiền: UBND xã Long Thành

Địa chỉ: Xã Long Thành huyện Yên Thành, tỉnh Nghệ An

Lý do chi: Chi trả tiền đền bù GPMB dự án cấp nước Long Thành

Số tiền: 1.301.120.620 (Viết bằng chữ) Một tỷ, ba trăm lẻ một triệu, một trăm hai mươi ngàn, sáu trăm hai mươi đồng

Kèm theo: chứng từ gốc.

Ngày 08 tháng 09 năm 2015

Thủ trưởng đơn vị


(Ký, họ tên, đóng dấu)


Phan Bùi Mỹ

Đã nhận đủ số tiền (Viết bằng chữ):

Kế toán trưởng

(Ký, họ tên)

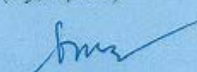


Trần Văn Chiến

Một tỷ, ba trăm lẻ một triệu, một trăm hai mươi ngàn, sáu trăm hai mươi đồng

Người lập

(Ký, họ tên)

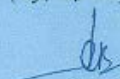


Phạm Thị Tú Anh

Ngày 08. tháng 09 năm 2015

Thủ quỹ

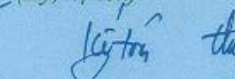
(Ký, họ tên)



Lê Thị Na

Người nhận tiền

(Ký, họ tên)





Doãn Ngọc Hà

+ Tỷ giá ngoại tệ (vàng bạc đá quý):

+ Số tiền quy đổi:

(Nếu gửi ra ngoài phải đóng dấu)

