



Environmental Monitoring Report

Project Number: 34420-013
May 2013

Period: April 2012 – September 2012

IND: National Highway Corridor (Sector) I Project

Submitted by
National Highways Authority of India

This report has been submitted to ADB by the National Highways Authority of India and is made publicly available in accordance with ADB's public communications policy (2011). It does not necessarily reflect the views of ADB.

Asian Development Bank



भारतीय राष्ट्रीय राजमार्ग प्राधिकरण

(सड़क परिवहन और राजमार्ग मंत्रालय)

National Highways Authority of India (Ministry of Road Transport & Highways)

पता: प.का.इ. (झाँसी) कार्यालय मकान संख्या-610, प्रभावन बिल्डिंग, सेंट्रल होटल के पीछे, सतीश नगर, सिविल लाइन्स, झाँसी 284003 (उ.प्र.)
Address : PIU Jhansi Office: House No. 610, Prabhavan Building, Behind Central Hotel, Satish Nagar, Civil Lines, Jhansi 284003 (U.P.)

Telephone : 0510-2450967
Fax : 0510-2450967
E-mail : jha@nhai.org
Website : http://www.nhai.org

11/3
AM/GM

NHAI/12010/1/2007/JHS-EW/13018

Dated the 07th March, 2013.

To

Mr. Hun Kim,
Country Director,
Asian Development Bank,
Indian Resident Mission,
4 San Martin Marg,
Chanakyapuri, New Delhi - 110021 (India)



Kind Attention : - Sh. Girish Mahajan (Environmental Specialist)

Sub : Consultancy Services for Rehabilitation and Up-gradation of existing 2 lane to 4
- lane for Package - 3 East West Corridor Sector - 1 Project.
- Submission of Half Yearly Environmental Status Report.

Ref: Supervision Consultant, M/s. Renardet S.A., Jhansi letter No.
ATL/AMM/NHAI/JHS/2013/3148 date 6th March, 2013.

Sir,

Please find enclosed herewith a copy of Half Yearly Environmental Status Report from April, 2012 to September, 2012 for your kind information and necessary action please.

Yours faithfully,

Encl : As above.

07.3.2013
(J.K. Bansal)
Project Director

Copy to the following for kind information & necessary action:

- Chief General Manager (T)/ R.O., Lucknow.
- General Manager (T)- UP, NHAI-HQ, New Delhi.



Name of the Project :-

Rehabilitation and strengthening of exiting 2 lane road and widening to 4 lane divided carriageway configuration of Jhansi to Junction of NH-2 (km. 104 to 255 of NH-25) by National Highway Authority of India.

Project Code: UP-6-200-2006

Clearance Letter No. 5-22/2005-IA-III Dated 6th May, 2006



ENVIRONMENTAL COMPLIANCE HALF YEARLY REPORT (April'2012 to September' 2012)

Prepared By :-

M/s. Renardet S.A., the Supervision Consultant, Providing Consultancy Services For Rehabilitation And Up-gradation Of Existing 2-Lane To 4-Lane On NH-25 Configuration In The States Of Uttar Pradesh Contract Package EW-II (UP-3, UP-4 & UP-5)

Submitted By : NHAI , PIU, Jhansi (U.P.)

NHAI – JHANSI



**RENARDET
INGENIEUR CONSEILS**

In association with
**M/s TECHNITAL S.P.A.
&**

M/s Sheladia Associates & Consultants India Pvt. Ltd.

TABLE OF CONTENTS

Sl. No.	Description	Page no.
1.0	Introduction	1
2.0	Project Description	1
2.1	Project Setting (EW-II/UP-5)	2
2.1.1	Project at Glance (UP-5)	3
3.0	Project objectives	4
4.0	Environmental Compliance Status	4
4.1	Ministry of Environment and Forests	4
4.2	Environmental Clearances During Construction Stage	4
4.2.1	Contract Packages	5
5.0	Statutory Environmental Clearances	5
	Contract Package EW-II/UP-3 , 4 & 5	5
5.1	Environmental compliance	5
5.2	Labor camp	5
5.3	Plant and work shop	7
5.4	Stock yard	7
5.5	Borrowing of Earth/Redevelopment of borrow areas:	7
5.6	Traffic and Occupational Safety	7
5.7	Land Scaping	7
5.8	CPR Shifting	8
5.9	Dump Site	8
5.10	Top Soil Monitory	8
5.11	Environmental Monitoring	9
6.0	Status of Environmental Mitigation Measures	9-28
7.0	Environmental Monitoring –ADB Covenant Conditions	29
8.0	Monitoring of Environmental Receptors	31
8.1	Air Quality	32
8.2	Noise Quality	32
8.3	Water Quality	32
8.4	Compliance status with Environmental Management and Monitoring Plan	35
9.0	Summary and Conclusion	35
10.0	Recommendation	36

LIST of TABLES

Sl. No.	Description	Page no.
1	Statutory Clearances as on 30/04/2012	5
2	Status of Environmental Mitigation Measures EW-II/UP-5	9
3	Environmental Implementation Progress Chart as on 30.09.12	29
4	Monitoring of Environmental Receptors	31
5	Summary of Test Results - Air	32
6	Summary of Test Results - Noise	32
7	Status of Implementation during construction stage and action plan of UP-5	33
8	Loan Covenant and Compliance Status	34

1.0 INTRODUCTION:

NHAI has envisaged National Highway Sector –1 East West-II corridor comprises of 3 Sub Packages viz EW-II UP-3, EW-II UP-4 and EW-II UP-5 (Jhansi–Oria Section) in Uttar Pradesh on National Highways No 75 (Old NH-76) & 27 (Old NH-25), funded by ADB (Loan No. 2029).

The project is implemented by NHAI and entrusted to M/s Renardet S.A. in association with Technical S.P.A. and Sheladia Associates & Consultants Pvt. Ltd for effective supervision of the project.

The Project is implemented in accordance with ADB's Environmental policy 2002 so as to ensure that all environmental mitigation measures as given in IEE and EMP incorporating all the Environmental concerns of the project. The principle objectives of the project with recourse to ensure environmentally compatible project implementation thus avoiding negative impacts that are arising from the project implementation and strictly adhere to EMP recommendations delineated in the IEE Report and in contract agreement conditions to the Contractors.

As per the IEE report, the project has been classified as category 'B' based on cumulative Environmental and social impacts. The Environmental impacts of the project during implementation are assessed by measuring various performance indicators. The collection and collation of baseline data for various environmental impacts for the project helped in assessing the impacts as per the implementation schedule given in the contract. The Package UP-3 and UP-4 had completed the civil works on 31.08.2010, 22.01.2011 respectively.

The UP-5 Package was delayed due to non acquisition of land at Pirona village and forest stretches at Rath Road which has now been cleared and the works are under progress. The civil works are expected to be completed on 31.03.2013. Thereafter DLP start from 01.04 2013 for one year. All the civil and environmental works are supposed to be completed within this DLP.

The report has been prepared as per TOR for Environmental Management Measures during construction stages. The report mainly deals with status of Environmental clearances from statutory authorities and from other agencies. The half yearly report delineates about the work done between April 2012 to September 2012 on environmental works as per the agreement condition and highlights the gaps and deficiencies while executing the environmental works.

2.0 PROJECT DESCRIPTION:

The Project starts at Km. 90+300 NH-25 (Uttar Pradesh) and ends at Km. 221+380 of NH-25, connecting the cities of Jhansi and Orai for a total length of about 135.13 Km. the project Road stretch of UP3, UP4, UP5 is detailed as below.

UP-3 – Km. 90+300	to Km. 106+175
UP-4 – Km. 104+000	to Km. 170+000
UP-5 – Km. 170+000	to Km. 221+300

The Project Package comprises the rehabilitation and upgrading of the existing 2-Lane to 4-Lane, with the construction of bridges, service roads, grade separations, intersections, ROBs, underpasses, protection works and drainage works. The road traverse through plain/flat terrain the location Map for all the three packages is depicted in Fig. 1.0

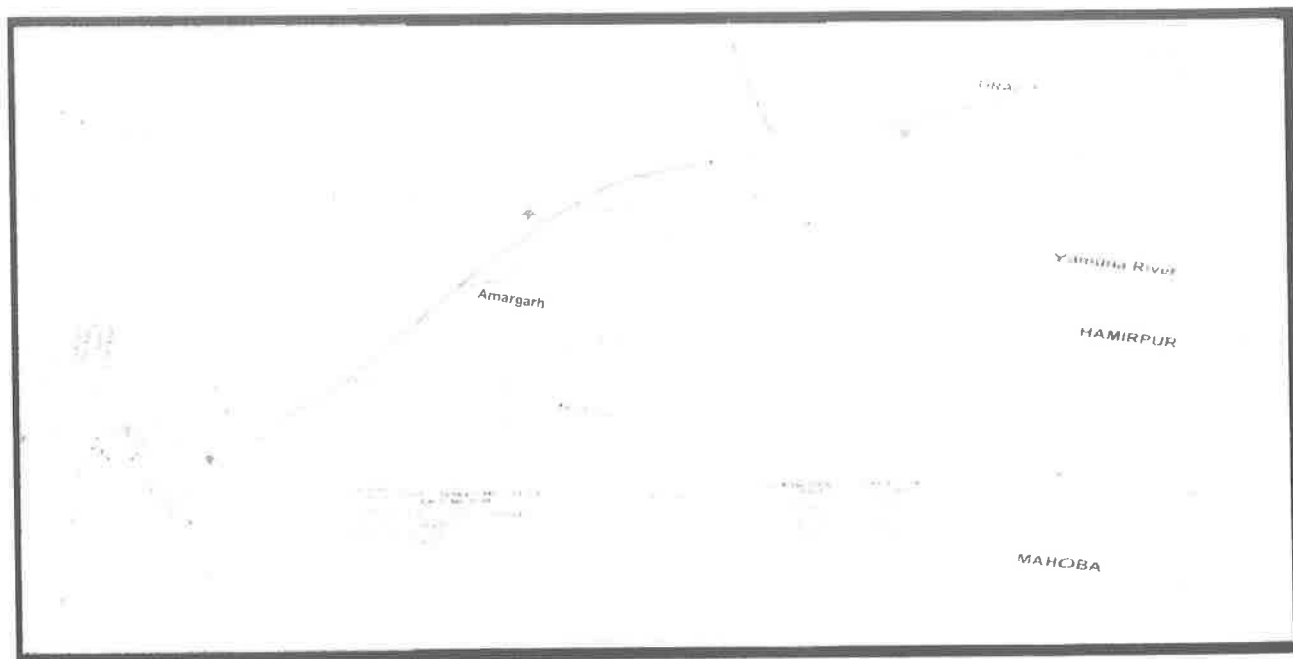


Fig 1.0 LOCATION MAP OF UP-3, UP-4 AND UP-5

The Project Packages UP-3 & UP-4 had completed all the civil works on 20th January 2012, 22nd January 2012 respectively. Construction works of UP-5 Package is under progress.

2.1 PROJECT SETTING – EW-II/UP-5:

This road section from Jhansi to Jalaun District has a total length of 51.338 km. and passes through Pirona and Ait Villages up to municipality of Orai. The Orai town has two UPSIDC created industrial areas namely Orai Industrial Area Phase I and Orai Industrial Area Phase II. The Orai Bypass Road was planned thereby bypassing these two industrial areas. The project road crisscross many streams which includes canals, drains and irrigation tributaries. The project road includes construction of 3 minor bridges, one ROB, 4 Grade Separator and 3 underpasses. There are a total of 67 culverts out of which 48 are new culverts and 19 existing culverts are to be replaced. This corridor mainly traverses alluvial plains and soil type varies from red sandy to red loamy soils. The most commonly found tree species along the corridor are eucalyptus, barbool, mango, banyan arjum, pakur, peepal, neer, sheesham etc. The south - west monsoon contributes major portion of rainfall in this region. The average annual rainfall area is between 750 mm to 1250 mm. The general altitude of the area varies from 150 m to 300 m above mean sea level. The project road lies in seismic zone II but considered as moderate safe zone as the horizontal

coefficient (OC) for this zone is 0.02 against the highest value of 0.08. The location map of UP-5 is given in fig. 2.0

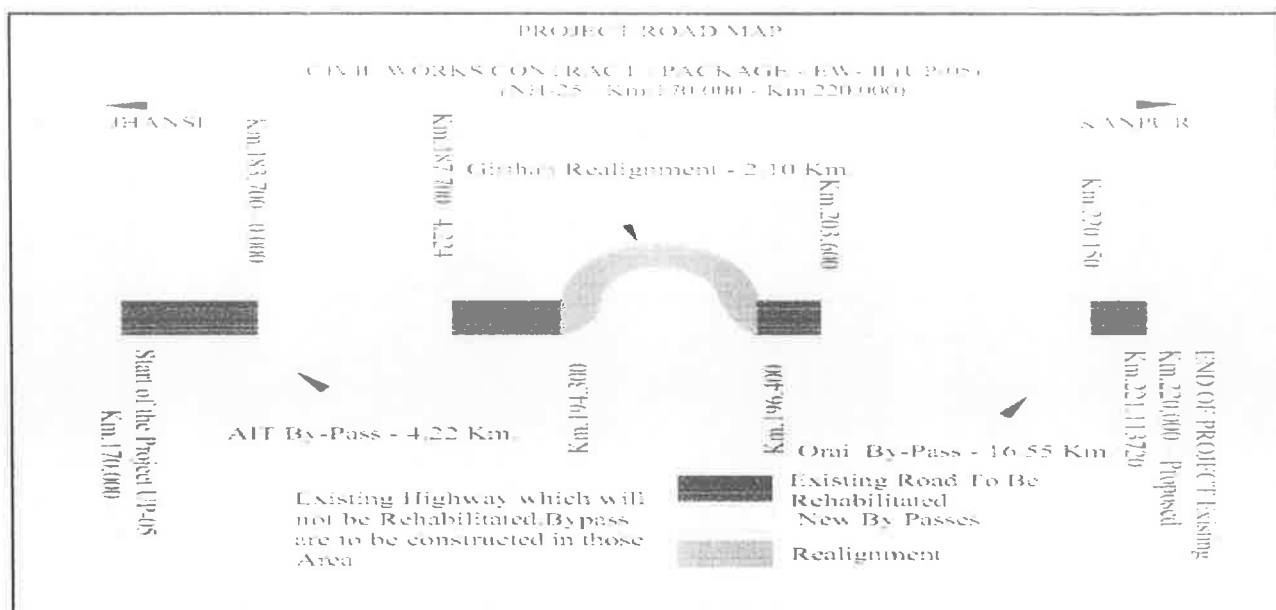


Fig 2.0 LOCATION MAP (UP-5)

2.1.1 PROJECT AT GLANCE (CONTRACT PACKAGE UP-5):

The salient features of the project along with project attributes for implementation are given as below:

Project Data

Road Section	: Km. 170+000 to 221+000
Total Length	: 51.338 Km.
Location (Districts)	: Orai
Number of Structures	: Nil Major Bridge : 03 Minor Bridge : 66 Box Culvert : 03 Pipe Culvert
Underpass	: 03 Vehicular Underpass : 01 Cattle Underpass
Flyover	: Nil
ROB	: 1 (218+600 Ragoli)
Terrain	: Plain
Right of way (Bypass)	: 60 m
Right of way (Highway)	: 45 m
Land use	: Agriculture
Important Town	: Orai, Ait, Pirona
Villages Enroute	: 07
Hand/Bore well Pump	: Nil

Agricultural	: 51.338 Km
Reserved Forest	: 160 m (Work suspended due to objection by Army Forest Department)
Cultural Properties	: 18 (8 Completed, 2 Under progress, 4 is deleted and 4 is to be undertaken)
Noise Barriers	: Nil
Commencement Date	: 14 October, 2005
Completion Date	: 14 April, 2008
First Recommended EOT	: 30 June, 2005
Second Recommended EOT	: 31 March, 2010
Third Recommended EOT	: 31 May, 2011
Further Recommended EOT	: 31 st March 2013
Defect Liability Period	: 01 st April 2013 to 31 st March 2014

3.0 PROJECT OBJECTIVES:

The objective is to upgrade the EW-II/UP-5 along with Environmental Management plans and implement Environmental works of the project of during the contract period. The Contractors is required to meet the environmental compliance with environmental regulations in force.

4.0 ENVIRONMENTAL COMPLIANCE STATUS OF THE TOTAL PACKAGES NH-27 (OLD NH-25):

4.1 MINISTRY OF ENVIROMENT AND FORESTS:

Environmental Protection Act (EPA), 1986, item no. 21 of schedule specifies that any highway project needs Environmental clearance from MoEF in the form of approved EIA. EIA is a pre-requisite and mandatory requirement for clearance of the project as per MoEF notification 1994 and amended 2006 for National Highway Projects.

NHAI's proposal has been examined by Environmental Appraisal Committee of MoEF and accorded conditional clearance vide letter number 8-7/2004-IA-III dated: 06th October 2005, prior to new EIA notification 2006.

4.2 ENVIRONMENTAL CLEARNCES DURING CONSTRUCTION STAGE:

The UP-5 Package has obtained necessary approvals and clearances during construction stages from U.P. State Pollution Control Board (UPSPCB). The clearances are validated according to progress of works. The rectification works for the UP-5 Packages for civil and environmental works are under progress simultaneously.

The statutory environmental clearances obtained by as on April 2012 is given below:

Table-1
STATUTORY CLEARANCE AS ON April 2012

EW- II/UP-3 & UP-4	WMM/Batching Plants	The projects were completed				
	HMP-1					
	Crusher					
	Batching Plant - 2					
	WMM/Batching Plant - 3					
	HMP-II					
EW- II/UP-5	WMM/Batching Plants	203+600 (1) 174+500 (2)	CFO	Obtained	31.12.2013	Clearances from UPSPCB are annexed in this report
	HMP-1	203+600 (1) 174+500 (2)	CFO	Obtained	31.12.2013	
	Crusher	203+600 (1) 174+500 (2)	CFO	Obtained	31.12.2013	
	Batching Plant - 2	203+600 (1) 174+500 (2)	CFO	Obtained	31.12.2013	
	WMM/Batching Plant - 3	203+600 (1) 174+500 (2)	CFO	Obtained	31.12.2013	

NB: Compliances with respect to applicable statutory environmental regulations are met satisfactory.

5.0 STATUS OF ENVIRONMENTAL ACTIVITIES (UP-5):

This section discusses the status of the project activity wise implementation of environmental mitigation measures. Also, an attempt has been made here to indicate the areas where improvements need to be made. Project component wise status of environmental activities is as follows.

5.1 ENVIRONMENTAL COMPLIANCES:

The Contractor has validated environmental clearances for operation of equipment sites till 31.12.2013 adhering the statutory environmental conditions.

5.2 LABOUR CAMPS AT CH. 174+500 RHS AND AT CH. 203+800 LHS:

The residential quarters of temporary labours like drivers, operators, lab boy etc, are made at three locations.

1st location detail: Situated near Pirauna village, Ch. 174+500 (LHS) at crusher plant

No. of room = 6
No. of toilet + bath = 5 (attached) and 1 common
No. of canteen = 1
First Aid Box = available
HIV awareness posters = available

2nd location detail: Situated Ch. 203+800 (LHS)

No. of room = 8
No. of toilet = 5
No. of canteen = 1
First Aid Box = available
HIV awareness posters = available

3rd location detail: Situated Ch. 203+800 (RHS)

No. of room = 7
No. of bathroom = 3
No. of Toilet = 4
No. of canteen = 1
First Aid Box = available
HIV awareness posters = available

All the rooms are having windows for ventilation and also equipped with beds and other accessories. Some of the local labours are living in their own houses in the surrounding area. The place of First Aid Box has been displayed on the notice board. However the camp site is not maintained as per the Contract Agreements such as disposal of solid and debris which is scattered all along the camp site.

5.3 PLANT AND WORKSHOP:

Hot mix, batch mix and wet mix plant are the three plant components for the project. Wet mix and hot mix plants have become operational since the inception of implementation works (2007).. Hot Mix Plants have in-built bag filters to control dust pollution. The Contractor has already received the necessary NOC from the Pollution Control Board for operating the HMPs. Workshop operations include repair of equipment, T&P and vehicles, servicing of equipment and vehicle, welding and cutting and filling activities. The major repairing and servicing of equipment are out-sourced.

Camp site is kept very untidy with indiscriminate storing and stacking of metal waste, spillage of asphalt waste. The construction material viz aggregates, sand are not stacked properly they have kept in uneven conditions without slopes.

The contractor has failed to construct land fill site which is mandatory for the disposal of spilled asphalt. Oily sludge's, swabbing, used drums and other hazardous materials. The equipment site at the camp is not monitored for air, noise since February'2012 which is against the Contract Agreement conditions. ***The summer season monitoring of April'2012 to June'2012 for work and equipment sites were not carried out violating norms of UPSPCB and other acts of MOEF.***

5.4 STOCK YARDS:

Materials being stored and stacked along the work and equipment site are not stored properly.

5.5 BORROWING OF EARTH:

There are 101 Borrow areas for which tests have been carried out for engineering parameters. Majority of the borrow areas are in elevated lands, although quite a few of those are fertile/productive, which are being brought down to the surrounding levels after the borrowing operations. The Contractor has been given drawings by the Supervision Consultants for rehabilitation of borrow areas. Still the Contractor has to re-develop 26 borrow areas with inlet, bunding, compaction of bunds and provision of vegetation around the periphery of the bunds as per the specification of NHAI and Contract Agreement signed by the Contractor. The 65 borrow areas were partially re-developed which is not as per the Sub Clause 111.2 of Technical Specification and Clause 305.2.2.2 of MORTH. ***It has also been noticed that the borrow areas at chainage's 182+200 (LHS), 184+350 (RHS), 185+050 (RHS), 193+650 (LHS) and 195+050 LHS were located with the distance to 25 mts. to 45 mts from the centerline of RoW. The stagnated water in this locations are likely to disturb the road structures at few locations. This aspect should be examined by the competent engineer of road structures.***

5.6 TRAFFIC AND OCCUPATIONAL SAFETY:

Safety gears like helmets, safety boots, jackets are in use. Mobile phone communication system is in place all construction areas, which would be of help in immediate communication of any accident eventuality. Barricading and safety measures during construction. Displaying signboards are inadequate and completely missing in measure stretches of the road which are against the Contractual agreement conditions.

Especially, there are no sign boards at major working sites at Pirona, Rath road & Ragoli (ROB). The dumped materials are obstructing the traffic within the Underpass, during the reporting period (April 2012 to September 2012).

5.7 LANDSCAPING/TURFING:

There is a 4.5m to 1.5m median gap in between both carriageways, which are used for plantation of small shrubs. The contractor has delayed in taking-up median plantation works. Subsequently the plants are started withering and most of plants were perished. This is due to poor maintenance of medians. The contractor has been remaindered to take-up watering, manuring, de-weeding, regularly for the growth of

plants and keep the survival rate of 85% of the plants. The Contractor has not shown any interest on Median, turfing and maintenance of plantation.

5.8 SHIFTING OF COMMON PROPERTY RESOURCES (CPR):

Altogether 18 CPR has been relocated after identification and consultation with the local community.

5.9 DUMP SITES:

Disposal excess earth-Debris/Rock cutting & soil which cannot be reused for road construction has been utilized in cultural/religious properties for land filling & leveling up of area after consultation with local public and committees.

5.10 TOP SOIL MONITORING:

The Contractor after excavation of earth, the top soil from fresh excavated areas has to be stacked, bunding, wetting manuring practices have not been followed for reporting period. There are no signs of top soil dumps in the work sites.

5.11 ENVIRONMENTAL MONITORING:

The Contractor has not been carrying out monitoring for Air, Noise, Water and Soil environment during at the equipment and construction sites for summer 2012 (April to June 2012). The Contractor has been advised to take effective pollution Control measures such as dust suppression, frequent Water sprinkling, provision of hoods for Mechanical Equipments, better housekeeping, maintenance of equipments through lubrication, change of bearings etc. The dust suppression along the major work sites is very poor. No water sprinklers are deployed.

Status of Environmental Mitigation Measures adopted by EW-II/UP-5 is given in Table-2

Table - 2
STATUS OF ENVIRONMENTAL MITIGATION MEASURES ADOPTED BY CONTRACTOR
CONTRACT PACKAGE, EW-II/UP- 5

S. No.	Environmental Issues	Management Measures as per NHA Contract Document	Reference to Contract Document	Locations	Status on Mitigation Measures by the Contractor	Balance of Work/Remarks
1	Camp Site	<ul style="list-style-type: none"> The construction camp sites shall be located away from any local human settlements and preferably located on lands, which are not productive presently. The camps shall have adequate water supply, sanitation and all requisite infrastructure facilities. This would minimize dependence of construction personnel on outside resources, presently being used by local populace and minimize undesirable social friction thereof. The water supplied to the construction camp shall be free from Arsenic contamination. The camp shall have septic tank / soak pit of adequate capacity so that it can function properly for the entire duration of its use. All construction camps shall have rationing facilities particularly for kerosene / LPG so that dependence 	Contract Clause 111.19	<p>Camp Site at Bada gaon</p> <p>Km. 203.800 Camp Site 2 @Pirona</p> <p>Km. 174+500(LHS)</p>	<ul style="list-style-type: none"> Camp sites are located 1000m away from settlements and ecologically sensitive areas. Hence no conflicts and stress over the infrastructural facilities. Location of stack yard are away from water bodies. Septic tank sum soakage pits have been provided. Safety aspects are fair. Officers colony has been provided with LPG Facilities No oil interceptor was provided at Garage/ oil storage tank. The Contractor has informed that the 	<ul style="list-style-type: none"> Regular camp site maintenance, shall be continued. Removal of Spilled asphalt, Oil sludges are to be dumped in land fill site. The balance of works are still remains. As per instruction to the contractor camp closure plans were submitted prior to demobilization of the sites. HIV/AIDS awareness camp was conducted successfully. Good house

S. No.	Environmental Issues	Management Measures as per NHA Contract Document	Reference to Contract Document	Locations	Status on Mitigation Measures by the Contractor	Balance of Work/Remarks
		on firewood for cooking is avoided.			<p>vehicle services are out source for washing and maintenance. The only emergency repair and greasing of vehicles are done at the camp site.</p> <ul style="list-style-type: none"> • First-Aid Boxes, medicines are stored at camp site. • The expire dates are verified. 	<p>keeping practices are very much insufficient. There is no log book in verifying the number of times of septic tank cleaning and use of the sludge as manure. The asphalt spillages are found around the Hot Mix Plant</p> <ul style="list-style-type: none"> • The camp site is untidy and improper of staking materials were noticed. There is no water sprinkling in and around the stack yards. More fugitive dust is observed. The incremental increase in dust levels could not

S. No.	Environmental Issues	Management Measures as per NHA Contract Document	Reference to Contract Document	Locations	Status on Mitigation Measures by the Contractor	Balance of Work/Remarks
						be assessed due to non-monitoring of pollutants.
2	Borrow Areas	<ul style="list-style-type: none"> Prior approval of borrow areas must be taken from local Environmental regulatory authorities. Borrow Area is to be demarcated with signboards. All operational areas to access controlled particularly for locals and for grazing cattle. During borrowing operations, improvement of inlet channels (at least to 100m stretch) should be undertaken in construction with the minor irrigation department. This activity is a contribution to social benefit due to project development. Also uniform excavation of tank bed over a larger area and smoothening of bed profile shall be undertaken. In fact, de silting and improvement of inlet channels of minor irrigation tanks all over state has been initiated by government of UP and MP as a measure to counter drought 	MORTH : 305.2 Clause 111.2	There are 101 nos. of Borrow Areas for the UP-5 and all are approved by the supervision Consultants. The details of Borrow Area are given in PPMS format.	<ul style="list-style-type: none"> Borrow area operations are carried out as per IRC : 10 : 1961. Rectification works are under progress. The top soil is stored and utilized for embankment and median plantations. No progress of works for re-development of borrow areas 	<ul style="list-style-type: none"> Redevelopment of borrow areas should include inlet (natural canal cleaning for runoff to the borrow area) bunding , compaction , vegetation around the bunding. The Contractor miserably failed to implement these measures after borrowing of earth of the road constructions. <u>The Contractor has to obtain satisfactory</u>

HALF YEARLY ENVIRONMENTAL STATUS REPORT
 APRIL TO SEPTEMBER 2012

S. No.	Environmental Issues	Management Measures as per NHA Contract Document	Reference to Contract Document	Locations	Status on Mitigation Measures by the Contractor	Balance of Work/Remarks
		conditions and replenishment of ground water resources.				<u>certificate from the land owners for the completed Borrow areas in a stamped paper.</u>
3	Haulage Roads	<ul style="list-style-type: none"> The alignment of haulage roads (in case of new ones) transportation link shall be finalized to avoid agricultural lands to the extent possible. In unavoidable circumstances, suitable compensation may be paid to people whose land will temporarily acquired for the duration of operations. 	MORTH 112 Clause 111.3	In and around the borrow areas and HMP, crusher sites.	<ul style="list-style-type: none"> Water sprinklers are used for dust suppression of the haulage road. 	<ul style="list-style-type: none"> Haulage Road are poorly maintained service roads were material are transported has to pass number of deep pot holes The dust level are very high in this haulage roads were combined traffic is adopted.. The construction materials are not covered during the transportation.

S. No.	Environmental Issues	Management Measures as per NHA Contract Document	Reference to Contract Document	Locations	Status on Mitigation Measures by the Contractor	Balance of Work/Remarks
4	Quarries	<ul style="list-style-type: none"> Material, particularly aggregates shall be sourced from licensed quarries. A list of such quarries is available from department of mines and Minerals, MP state. Quarries which have occupational safety procedures / practices in place, are to be approved for materials and regular inspection shall be carried to ensure compliance of safety procedures / practices by quarry agencies subsequently. Large material draws should not be a cause for neglect of safety procedures, which is otherwise common. In case unlicensed quarries are to be chosen for viable reasons, ensure compliance of all measures mentioned above. 	Clause 111	The quarry site is located at Jhansi (Paricha) Bilati (OSB)	<ul style="list-style-type: none"> The quarry areas are operated from licensed quarry. The operations are undertaken with in rules and regulations in force. water sprinklers cyclones are used for dust suppression blasting operations as per Indian explosive. 	<ul style="list-style-type: none"> The environmental monitoring is due for summer 2012. Dust suppression activities are very poor. Sprinklers are to be frequently used at least at major work site (Pirona, Rath Road ROB sits.) The labors are provided with Air filters, earplugs. Safety belts and helmets
5	Dumpsites	<ul style="list-style-type: none"> Dumpsites shall be located in consultation with MPSPCB and Engineer lined landfill site design 	Clause 111.21	No dumps sites have been its	<ul style="list-style-type: none"> The Contractor is using excess earth for high embankments. 	<ul style="list-style-type: none"> The waste dumps are still to be removed from Rath road

S. No.	Environmental Issues	Management Measures as per NHA Contract Document	Reference to Contract Document	Locations	Status on Mitigation Measures by the Contractor	Balance of Work/Remarks
		shall be provided.		notified		Underpass and Pirona.
6	Hot mix Plants & Batching Plant Location	<ul style="list-style-type: none"> Hot mix plants and batching plants will be sited sufficiently away from habitation, agricultural operations or industrial establishment. Such plants will be located at least 1000m away from the nearest habitation, preferably in the downwind direction. 	Clause 111.5	Km. 203+800	<ul style="list-style-type: none"> The contractor has installed pollution control devices like bag filters. 	<ul style="list-style-type: none"> Environmental Monitoring works were not carried out for summer 2012 (April to June 2012), which is critical season for assessing air pollutants.
7	Work Sites	<ul style="list-style-type: none"> All personnel in work sites shall have protective gears like helmets, boots etc so that injuries to personnel are minimized. Children and pregnant women shall not be allowed to work under any circumstances. No personnel shall be allowed to work at site for more than 10 hours per day. Personnel who are likely to be exposed to noise levels beyond stipulated limits shall be provided with protective gears like ear plugs 	NHA annexure of the Contract Document	All along the stretch Km. 170 to Km. 220	<ul style="list-style-type: none"> All safety appliances are available. No worker is allowed to work more than 10 hrs. water sprinklers are sparingly used for dust suppression thrice a day. 	<ul style="list-style-type: none"> The laborers are to be counseled to wear protective appliances.

HALF YEARLY ENVIRONMENTAL STATUS REPORT
APRIL TO SEPTEMBER 2012

S. No.	Environmental Issues	Management Measures as per NHA Contract Document	Reference to Contract Document	Locations	Status on Mitigation Measures by the Contractor	Balance of Work/Remarks
		etc and regularly rotated. Regular water sprinkling of water shall be ensured so that dust levels are kept in minimum.				
8	Soil Erosion	<ul style="list-style-type: none"> • Soil stabilization measures by immediate grassing and vegetation of embankments to control soil erosion, sedimentation and water pollution. • Fill material would be compacted immediately after placing 	Clause 111.0	High Environmental Borrow areas	<ul style="list-style-type: none"> • Soil stabilization techniques have been followed to reduced erosion potential areas. Embankment slopes on road cut are stabilized by re-vegetation species, rip-rap, rock gabions. • Yes, compaction has been carried out using baby roller, plate compactor to achieve proper density. 	<ul style="list-style-type: none"> • Environmental surveillance will continue till the completion of works. • Stone pitching of higher embankments of ROB, Vehicular Underpass have been completed.
	Soil contamination by construction waste, fuel etc.	<ul style="list-style-type: none"> • Oil & fuel spills from construction equipments shall be controlled by good O&M practices. • Contaminated soil shall be disposed of as per MoFE guidelines. 	Clause 111.0	Work site	<ul style="list-style-type: none"> • Solid platforms were provided, metal trays and drums are used to collect the dripping oil. 	<ul style="list-style-type: none"> • Environmental surveillance will continue.

S. No.	Environmental Issues	Management Measures as per NHA Contract Document	Reference to Contract Document	Locations	Status on Mitigation Measures by the Contractor	Balance of Work/Remarks
	Contamination of soil from fuel and lubricants	• Soak pits along with oil and grease traps shall be provided around fuel storage areas.	Clause 111.0	Equipment and worksite	• Oil & grease trap were provided	• Collection of used Oil is sold to local traders.
9	• Water					
	Water Bodies	• Impact on surface watercourses (rivers and ponds) would be minimized thorough by control over construction works as per guidelines.	Clause 111.0	Along the stretch & the package	• Yes, complied	• Complied by providing Drains.
	Other Water Sources	• Community water sources shall not be used during construction period. • The contractor shall make independent arrangements for water required for construction in such a way that the water availability and supply to nearby communities remain unaffected.	Clause 111.0	Along the stretch & the package	• Contractor is using water from bore well at plant sites and in labour. camp • Complied	• Complied
	Drainage and run-off	• At cross drainage structures, the earth, stone or any other obstructing construction material shall be removed and properly disposed of so as not to block	Clause 111.0	Along the stretch of the Road construction	• Materials are removed as per IRC specifications • All construction work is done in dry weather	• Complied • Materials are not properly stacked at stock yards.

S. No.	Environmental Issues	Management Measures as per NHAI Contract Document	Reference to Contract Document	Locations	Status on Mitigation Measures by the Contractor	Balance of Work/Remarks
		the water at any time. • Construction material shall not be stored so as to block the drainage system, if happens contractor should ensure that they are cleaned especially during monsoon period.			season and any accidental spills are immediately remover.	
		• Roadside drains have been proposed all along the project road to improve drainage. Contractor shall off the drains before opening the road to traffic.	Clause 111.0	Along the stretch of the Road construction	• Earthen drain all along the project length and masonry drain in the build-up areas has been complied.	• Road side drains for rural and urban areas were provided as per specification.
	Contamination of water from construction waste	• Construction and sitting of plant & machinery close to the streams and water bodies shall be avoided, especially during monsoon period. • Soak pits shall be provided at construction site to prevent wastewater from entering into rivers and streams especially during pile driving across major rivers. • Construction materials containing fine particles like limestone's aggregates etc. will be stored in enclosures away from water bodies to ensure that sediment laden water	Clause 111.0	Along the stretch of the Road construction	• Runoff has been controlled by proper sitting of construction camps. • No plant & machinery are sitting close to the streams and water bodies. • Soak pits is proposed at construction sites. • Constructions were carried out in dry month and all precautionary measures had been	• Complied

S. No.	Environmental Issues	Management Measures as per NHAI Contract Document	Reference to Contract Document	Locations	Status on Mitigation Measures by the Contractor	Balance of Work/Remarks
		does not drain into nearby water courses.			taken during the construction work to maintain natural width of river flow. The storage sites were away from water bodies.	
	Contamination of water from fuel and lubricants	<ul style="list-style-type: none"> • To avoid contamination from fuel and lubricants, the vehicle and equipments shall be properly maintained and refueled. • Vehicle maintenance and refueling in construction camps should be confined to areas with traps oil/grease to prevent wastewater from entering into rivers and streams. • Waste petroleum products must be collected and disposed of at appropriate disposal sites as per Govt regulations. • Proper disposal of water and other liquid waste arising from construction. Stream courses and drains will be kept free from dumping of solid waste and earth 			<ul style="list-style-type: none"> • The vehicle and equipments were properly maintained and refueled, following good O&M practices. • Solid platforms were provided. Oil/grease traps were recommended. • Waste petroleum products were collected and disposed of at an identified barren land, water course and the dump sites for such material were secured so that they should not leach into the ground water. 	<ul style="list-style-type: none"> • Complied

S. No.	Environmental Issues	Management Measures as per NHA Contract Document	Reference to Contract Document	Locations	Status on Mitigation Measures by the Contractor	Balance of Work/Remarks
		material.			<ul style="list-style-type: none"> Construction spoils i.e. liquid waste and other hazardous material are secured sites so that they do not leach into the ground water. 	
	Sanitation and waste disposal in construction camps	<ul style="list-style-type: none"> The camps shall have septic tanks; soak pits of adequate capacity so that it can function properly for the entire duration of its use. 			<ul style="list-style-type: none"> The camp have septic tanks; soak pits of adequate capacity. Layouts of the campsite along with soak pit capacity are attached. 	<ul style="list-style-type: none"> De-sludging of septic tank to be practiced once in 6 months. Septic tank cleaning is overdue. Poor camp sanitation.
10	• Air					
	Emission from construction vehicles and machinery	<ul style="list-style-type: none"> All vehicles, equipments and machinery used for construction shall be regularly maintained to ensure that the pollution emission levels conform to the SPCB norms. The asphalt plants, crushers and the batching plants shall be sited at least 500 m in the downwind direction from the nearest settlement. 	Clause 111.0	Along the stretch of the Road construction	<ul style="list-style-type: none"> POLLUTION UNDER CONTROL certificates have been checked. All machinery which were deployed in construction works were properly tuned & in working conditions to conform of Environment 	<ul style="list-style-type: none"> The monitoring was not done for summer season (April'2012 – June'2012) the non-compliance has been brought to the notice of the contractor again and again.

S. No.	Environmental Issues	Management Measures as per NHA Contract Document	Reference to Contract Document	Locations	Status on Mitigation Measures by the Contractor	Balance of Work/Remarks
		<ul style="list-style-type: none"> All operational areas under project development like borrow areas, haulage roads work sites, construction camp sites hot mix plants etc. are to be regularly monitored for air quality parameters. 			<p>(protection) Rules 1986.</p> <ul style="list-style-type: none"> The asphalt plants, crushers and the batching plants were sitting at least 500 m in the downwind direction from the nearest settlement. Monitored & found within limits. 	<p>The significance of loss of environmental base line data cannot be replicated to assess further widening of the road in future.</p>
	Dust and Nuisance	<ul style="list-style-type: none"> Existing hot mix / concrete / asphalt plants shall be used to the extent possible. In case of new hot-mix plants, crushers, construction yard and batching plants, these shall be sited at least 500 m downwind from the nearest habitation and covered with dust trapping hoods. Water shall be sprayed at mixing sites, earth mixing sites and asphalt mixing sites and on temporary access roads and diversions. Vehicle delivering material shall be covered. End boards in loaders shall 			<ul style="list-style-type: none"> Mitigation measures such as water sprinkling for dust suppression. The asphalt plants, crushers and batching plants were sitting at 500 m in the downwind direction from the nearest settlement. Water was sprayed three times a day. Vehicle delivering material were covered. End boards in loaders 	<ul style="list-style-type: none"> Poor dust suppression all along the work sites. No logbook is available for water sprinklers.

HALF YEARLY ENVIRONMENTAL STATUS REPORT
APRIL TO SEPTEMBER 2012

S. No.	Environmental Issues	Management Measures as per NHA Contract Document	Reference to Contract Document	Locations	Status on Mitigation Measures by the Contractor	Balance of Work/Remarks
		be provided to prevent spillage.			were provided to prevent spillage.	
	Environmental Monitoring (Air Quality & Noise)	<ul style="list-style-type: none"> All operational areas under project development like borrow areas, haulage roads, work sites, construction campsites, hot mix plants, etc are to be regularly monitored (at least once in a week) for air quality parameters such as SPM, RPM, SO₂, NO₂, HC, CO etc. This will ensure identification of operations / areas of concern with regard to air pollution. Mitigation measures such water sprinkling for dust suppression, permitting contraction equipment / vehicles having pollution under control certificates will reduce work area concentration of air pollutants like, RPM, SO₂, NO₂, HC, CO etc. and therefore does not contribute to build up of pollutants. Like for air quality, all operational areas under project development shall be monitored for noise levels representing all hours of a typical 	Clause 111.0	Along the stretch of the Road construction	<ul style="list-style-type: none"> Contractor has monitored the pollution concentration level for air, noise, water at the camp site HMP, CRUSHER and BATCHING PLANT to describe the cross sectional distribution of pollution concentration levels of proposed four lane bypass. Cross sectional distribution of neighbor road for the proposed four lane bye pass 	<ul style="list-style-type: none"> The contractor has not monitored Air, Noise, water for the equipment and work sites during Summer 2012.

HALF YEARLY ENVIRONMENTAL STATUS REPORT
APRIL TO SEPTEMBER 2012

S. No.	Environmental Issues	Management Measures as per NHAI Contract Document	Reference to Contract Document	Locations	Status on Mitigation Measures by the Contractor	Balance of Work/Remarks
		<p>work shift.</p> <ul style="list-style-type: none"> This will ensure identification of operations /areas of concern with regard to noise pollution Operational areas include, work sites, haulage roads, hot mix plants, quarries, borrow sites etc. maintenance / lubrication, limiting operations to day time etc. will contain noise levels to permissible / threshold limits. 				
12	• Noise					
	Noise from vehicles, equipment sites	<ul style="list-style-type: none"> Noise levels would increase due to excavation movement of machinery etc. and O&M of heavy vehicles and equipments. All precautions meeting the noise standards have to be followed through noise abatement measures. DG sets if use, shall adhere to noise standards of MoEF/CPCB. To protect construction workers from severe noise impacts, workers exposed to excessive noise shall be given earplugs, helmets, etc. At construction sites within 500 m of 	Clause 111.16, 111.17	Km. 170 to Km. 220	<ul style="list-style-type: none"> Noise levels were not monitored. 	<ul style="list-style-type: none"> Not Complied

S. No.	Environmental Issues	Management Measures as per NHAI Contract Document	Reference to Contract Document	Locations	Status on Mitigation Measures by the Contractor	Balance of Work/Remarks
		human settlements, noisy construction shall be avoided between 10.00 p.m. and 6.00 a.m.				
13	• Flora					
	Loss or damage to vegetation	• Trees lost shall be replaced just before the beginning of the construction according to compensatory a forestation Policy under the Forest Conservation Act, 1980 at the Forest Conservation Act, 1980 at the rate of three new trees for each tree lost.	Clause 111.0	Entire road stretch	• Taken up by local forest authorities.	<ul style="list-style-type: none"> • Tree plantation work is still pending. • There is no land available for tree plantation. The tree plantation and landscaping shall be carried out at Bypasses where land is available.
14	• Fauna					
	Loss, injury or disruption to fauna	<ul style="list-style-type: none"> • Construction workers shall be directed not to poach upon fauna. Hunting shall be strictly prohibited. • Contractor shall take all necessary 	Clause 111.0	Forest area water bodies.	• Compiled	• Compiled

S. No.	Environmental Issues	Management Measures as per NHAI Contract Document	Reference to Contract Document	Locations	Status on Mitigation Measures by the Contractor	Balance of Work/Remarks
		measures to protect wildlife during construction in forest areas. Necessary signage, controlled/timely construction activities shall reduce disturbance to wildlife.				
	Health, Safety & Accidents					
	Accident risks from construction activities	<ul style="list-style-type: none"> To ensure safety of the temporary accesses during construction, safety devices shall be installed. Traffic rules and regulation shall be strictly adhered to local laws. Workers undertaking various operations during construction shall be protected by providing helmets, masks, safety goggles, hand gloves and rubber boots etc. First aid kits shall be provided at construction site for workers to Meet minor accidents during construction. All hazardous operations like blasting, deep excavations shall be access controlled for nearby local 			<ul style="list-style-type: none"> Compiled in the form of safety ribbons and hoarding signs. Strict adherence to local traffic laws. Compiled Compiled All hazardous operations like blasting, deep excavations were access controlled for nearby local people/onlookers. 	<ul style="list-style-type: none"> Safety compliance are to be improved and continues.

S. No.	Environmental Issues	Management Measures as per NHAI Contract Document	Reference to Contract Document	Locations	Status on Mitigation Measures by the Contractor	Balance of Work/Remarks
		<p>people/onlookers.</p> <ul style="list-style-type: none"> Adequate caution regarding blasting shall be notified for people living by if any well in advance. 			<ul style="list-style-type: none"> Adequate caution regarding blasting were notified for people living nearby if any well in advance. 	
	Diversion of traffic	<ul style="list-style-type: none"> Appropriate traffic diversion schemes shall be implements so as to avoid inconvenience due to project operations to present road users, particularly during nighttime. Proper diversion schemes will ensure smooth traffic flow minimize accidents, traffic Snarl ups, and commotion. The Diversion signs should be bold and clearly visible particularly at night. The Diversion schemes particularly near water bodies should consider grazing cattle crossing points. All project operations shall have proper cladding. 	Clause 112	Km. 170 to Km. 220	<ul style="list-style-type: none"> Traffic diversion with signboards are very much in inadequate, which trigger accidents 	<ul style="list-style-type: none"> Necessary site instructions are given to put up traffic sign Boards at ROB, under passes.
	Construction Equipment / Vehicles	<ul style="list-style-type: none"> All equipment / vehicles deployed for construction activities shall be regularly maintained and not older 	Clause 111.15	Km. 170 to Km. 220	<ul style="list-style-type: none"> The contractor deployed vehicles which do not possess 	<ul style="list-style-type: none"> PUC and vehicle fitness certificates were now

S. No.	Environmental Issues	Management Measures as per NHAI Contract Document	Reference to Contract Document	Locations	Status on Mitigation Measures by the Contractor	Balance of Work/Remarks
		than 5 years. • Vehicles / equipment deployed for construction activities shall be regularly maintained for smooth operation, a measure contributing to air quality and noise. • Vehicles / equipment shall be regularly subjected for emission tests and shall have valid Pollution Under Control, certificates, revalidation of certificates shall be done once in a month. • All vehicles deployed for material movement shall be spill proof to the extent possible. • In any case all material movement routes shall be inspected daily twice or clear off any accidental spills.			simple PUC (Pollution under Control certificate)	furnished.
15	Tree Plantation	• Sapling of trees along the road side with ratio 1:3. • Median plantation, landscaping etc.	Section 2 of the NHAI agreement	All along the stretch.	• The avenue plantation works have been entrusted to state forest department which is yet to be taken up. the work.,	• Land is not available for the entire stretch. Except for Bypasses. The issue is pending for a long time.

S. No.	Environmental Issues	Management Measures as per NHAI Contract Document	Reference to Contract Document	Locations	Status on Mitigation Measures by the Contractor	Balance of Work/Remarks
16	Median Plantation	<ul style="list-style-type: none"> Medians shall be filled with the stored Topside and soil mixture . The bottom of soil should be covered with 50mm to 75mm of soil. Selection of Horticulture flowering plants for enhancing aesthetic impacts. All areas to be planted with shrubs shall be excavates to a depth of 750mm, refilling the excavated Earth after breaking clods. Adequate watering of newly planted Horticulture plants Fertilizing shall be carried out by application in rotation of fertilizer every 15 days from the beginning of the monsoon. The median plantation shall be inconsonance with land scope. 	Clause 111	All along the stretch.	<ul style="list-style-type: none"> The contractor has to maintain the median plantation for an year from the date of defect liability period. The contractor has to remove weeds which is grown profusely and manure and watering as per MORTH specifications. The contractor has been instructed to maintain survival rate of 85%. The maintenance of median plantation has to be improved with proper watering , manuring and weeding operations. It has been noticed that median plantation has kaner plantation compare to the mix of Bougainvilleas and other flower plants. 	<ul style="list-style-type: none"> Median plantation works were abandon after the monsoon 2012. The plants were dried due to non watering, de weeding and manuring. The contractor is not responding for replantation works of 50%. Absence of median turfing is indication of incomplete works.

S. No.	Environmental Issues	Management Measures as per NHA Contract Document	Reference to Contract Document	Locations	Status on Mitigation Measures by the Contractor	Balance of Work/Remarks
					Monoculture of median plantation is highly pronounced throughout the stretch. The dead plants may be replaced with Bougainvilleas for improving the aesthetic impacts.	

7.0 ENVIRONMENTAL IMPLEMENTATION PROGRESS CHART: EW – II, UP-5

The progress chart has been prepared in Consultation with the contractor and supervision Consultant. PPMS formats and field verifications for the environmental parameters of significance were considered for computation of percentage of works completed from 1st April, 2012 to 30th Sep'2012.

The progress charts are depicted in the following Table 3

Table: 3

ENVIRONMENTAL IMPLEMENTATION PROGRESS CHART AS ON 30.09.2012

CONTRACT PACKAGE EW-II/UP-5

S.No.	Description	Nos	% Completed	Expected Completion	Location	Remarks
1	Validation of Environmental clearances		Revalidated till 31.12.2013	-	Camp 1.Km.203.600 Camp 2. Km.174.500	-
2	a) Camp Site	2	-	-	Camp 1.Km.203.600	Poor sanitation, water cess pools.
	1) Oil Interceptor	2	Out sourcing of vehicles for repairing and servicing.	-	Camp 2. Km.174.500	-
	2) Land fill site (New)	1	-	-	Camp 1.Km.203.600 Camp 2. Km.174.500	Not constructed.
3	Environmental Monitoring of HMP, WMM +Quarry crusher area	1	Due for the Summer 2012	Un- Certain	All equipment and work sites	Not acceptable.

HALF YEARLY ENVIRONMENTAL STATUS REPORT
APRIL TO SEPTEMBER 2012

4	b) Borrow area redevelopment	101	70%	Un- Certain		26 % redevelopment & Borrow areas are to be carried out as per technical specification.
5	c) Dump sites	6	90%	31.03.2013	All along the stretch	Continued activity.
6	d) Quarry area redevelopment	2	75%	31.03.2013	-	-
7	e) Noise Barrier		Nil	Nil	Nil	Not in contractor's scope
8	f) Enhancement Deepening of ponds Cultural property		Nil	Nil	Nil	Not in contractor's scope
9	g) Environmental Monitoring of road stretch / work sites quarterly	1	Due for winter 2012.	-	-	-
10	Soil Erosion / Turfing	-	80%	Un- Certain	All along the stretch	Continued activity till 31.03.2013
11	Dust control of work sites	-	-	-	All along the stretch	Continued activity.
12	HIV/AIDS awareness camp	1	100%	-	-	-
13	Median Plantation for reporting period ending Sep'2012.	51Km	50%	Un- Certain	-	Median plantation works to be redone.

8.0 MONITORING OF ENVIRONMENTAL RECEPTORS (Ambient Air, Noise, Surface, Soil and Water ground water)

The monitoring parameters and its frequency, duration and responsibility of monitoring should be as follows:

Table: 4

Sr. No	Environmental component	Parameters	Frequency and duration	Responsibility	Supervision
1	Air quality	SPM,RPM,NOX,SO ₂ , CO	Once continues for 24 hours, 3 times in a year (once in season except in monsoon) for once in 3 years during construction period.	Contractor through approved monitoring agency	PIU,NHAI, supervision consultants
2	Noise quality	Day and night noise levels (DBA)	24hr continuous, three times per year for 3 years during construction period.	Contractor through approved monitoring agency	PIU,NHAI, supervision consultants
3	Water quality Ground and surface water	As per year IS10500:1991	Thrice per year (once in each season except in monsoon) for once during construction period.	Contractor through approved monitoring agency	PIU,NHAI, supervision consultants
4	Soil quality	pH, conductivity, organic matter, nitrogen, phosphorus, sodium, chromium, cadmium	Once in a year during winters every year up to 3 year of construction period.	Supervision Consultant's Environmental specialist	PIU,NHAI

SUMMARY OF TEST RESULTS

Table: 5

8.1 Air Quality: as on 30.09.2012

Road Section	Location	Date of monitoring	RPM	SPM ($\mu\text{g} / \text{m}^3$)	SO ₂ ($\mu\text{g} / \text{m}^3$)	NO _x ($\mu\text{g} / \text{m}^3$)	Co ($\mu\text{g} / \text{m}^3$)	HC ppm
EW-II/UP-5	Batch mix plant at Km 203.800	Monitoring was not carried out for summer (April to June 2012)						
EW-II/UP-5	Crusher plant at Pirauna village (Km 174.500)							
EW-II/UP-5	In front of Sankat Mochan Mandir near ROB							
CPCB Standards		-		200	80	80		

Table: 6

8.2 Noise quality: EW-II/UP-5

S.L. No.	Location	Leq value dB (A)			
		Max	Min	Max	Min
1	Batch Mix Plant at Ch. 203.800	Monitoring was not carried out for summer (April to June 2012)			
2	Crusher Plant at Pirauna at Ch. 174.500				
3	In front of Sankat Mochan Mandir near ROB				
4	Ircon Camp Office at Ch. 203.800				
5	Ate bypass at ch. 188.00				

8.3 Water and Soil quality: EW-II/UP-5 : Monitoring was not carried out for summer (April to June 2012)

HALF YEARLY ENVIRONMENTAL STATUS REPORT
APRIL TO SEPTEMBER 2012

Table: 7

STATUS OF IMPLEMENTATION DURING CONSTRUCTION STAGE AND ACTION PLANS OF
EW-II/UP-5

S. No.	Environmental Issues	Implementation Status	Responsibility	Action Plan
1	Camp Site	All Packages have complied as per the contract clause 111.19. The camp sites are away from ecological sensitive Areas. UP-3 has completed road works closure plants are submitted for demolition.	NHAI / Engineer	Operation and Maintenance of equipment sites are being strengthened.
2	Borrowing of Earth The redevelopment of Borrow areas for UP-5 is under progress	All borrow area are approved from Engineer. Redevelopment of borrow areas are under progress UP-3 has partially developed. Borrow areas of 06 nos to be taken up redevelopment works are under progress.	NHAI / Engineer	Out of 101 nos. of borrow areas (partially developed) 26 nos. will be developed as per the technical specifications before DLP.
3	Loss of Water bodies	Tow nos water bodies affected along the project road 8 UP 4 enhancement works were under taken for nearby water bodies through tone pitching and provision of steps.	NHAI / Engineer	Complied
4	Dump Sites	Disposed construction debris for embankments, low lying areas.	NHAI / Engineer	The work is continued till the completion of works.
5	Contamination of water from construction wastes	Construction work close to water bodies are avoided during Monsoon season	NHAI / Engineer	Surveillance is continued till the completion of works.
6	Loss of damage to Vegetation	Disruption to flora is minimum. Strict monitoring in felling of Trees are followed.	NHAI / Engineer	Complied
7	Noise mitigation	UP-3 has to provide Noise barrier of Hansraj school. UP-4 has provided Noise barrier. UP-5 has no requirement.	NHAI / Engineer	Complied

THE STATUS OF COMPLIANCE OF ENVIRONMENTAL SAFE GUARDS RELATED TO LOAN
COVENANT IS DEPICTED BELOW

Table: 8

LOAN COVENANT AND COMPLIANCE STATUS

S. No.	Covenant	Status of compliance
1	All environmental permits, licenses and clearances are obtained in a timely manner prior to commencement of civil works in the relevant section of project roads(LA schedule 5,para10)	Complied
2	Sub-projects involving acquisition of land for a section or part thereof under civil works contract, that passes through forest land and/needs diversification for use of forest land, relevant statutory clearances under the borrowers Forest conservation act,1980,related pollution control, and environmental clearances under Environmental notification 1994,shall be obtained prior to commencement of civil works for that section of civil works contract under the sub project	Complied
3	Environmental mitigation measures identified in the IEE and EMP are incorporated into the designs (including detailed designs) and are implemented during construction, operation, and maintenance of the sub project highway.	Necessary steps have been taken in strengthening the monitoring work.
4	Implementation of the EMPs is reported semi-annually to ADB. (LA, schedule 5, para 10))	Complied
5	Training programme for environmental management for its staff and staff of civil works contractors engaged under the Subprojects.	Complied
6	Monitor audit and report semi annually, implementation of the IEE and EMP to ADB.	Complied
Resettlement		
1	The Project is implemented in accordance with the borrower's National Rehabilitation and Resettlement policy 2007, the State's Uttar Pradesh Land Acquisition Resettlement and Rehabilitation policy 198 and the RPs (LA schedule 5, para 12)	Complied
2	Affected people receive priority for wage employment in project construction (LA schedule 5, para 12).	Complied

HALF YEARLY ENVIRONMENTAL STATUS REPORT
APRIL TO SEPTEMBER 2012

3	Implementation of the RPs is monitored (a) internally by the project implementation units and reported monthly to the project management unit who shall report the results quarterly to ADB and (b) independently by an expert under construction supervision consultant and reported biannually directly to ADB, (LA, schedule 5, para 12).	Complied
HIV / AIDS, Human Trafficking and Child Labor		
4	The state shall conduct awareness program in respect of HIV/AIDS and human trafficking and child labor at the project areas for which the state may engage an agency / non government organization. The state shall ensure that the civil works contracts under the project incorporate provisions to the effect that the contractor is required to (i) carry out HIV / AIDS awareness programs for labor, (ii) disseminate information at works sites on risks of sexually transmitted diseases and HIV AIDS as part of health and safety measures for those employed during construction, and (iii) follow and implement all statutory provisions o labor (including equal pay for equal work and non employment of child labor) , health, safety, welfare, sanitation and working conditions. The state shall ensure that the civil works contractor also provide for termination of the contracts by the state in case of beach of any of the said provisions by the Contractor.	Complied

8.4 COMPLIANCE STATUS WITH ENVIRONMENTAL MANAGEMENT AND MONITORING PLANS

NHA is implementing the project and its sub-projects in accordance with ADB's environmental policy 2002 as per EMP along with Budget provisions. The compliance status for the loan covenants is depicted the following table,

9.0 SUMMARY AND CONCLUSIONS:

UP-5 Package (Work under progress)

The non-compliance of works does not relieve the contractor of any responsibility as promulgated in the National Environmental Protection Act 1986 (Umbrella of various acts on Air, Water, Noise, Soil and Land (Bio-diversity, Hazardous waste)

- 1- The Majority of Borrow areas have to be redeveloped as per the specifications and guidelines of re-development of Borrow areas as per ***Sub Clause 111.2,305 & 403.***
- 2- The Median plantation needs re-plantation, along with de weeding and manuring practices.
- 3- Necessary certificates from land owners indicating their satisfactory in rehabilitation of the Borrow areas are still awaited for 26 nos.

- 4- The contractor has to take to rehabilitate the borrow areas at Ch. 182+200 (LHS), 184+350 (RHS), 185+050 (RHS), 193+650 (LHS) and 195+050 LHS) as these are located within distances of 25 M to 45 M from the center line or ROW. The stagnated waters in the ponds may pose problems road structure and these ponds become death traps to animals.
- 5- The contractor has to deploy Environmental Coordinator exclusively for the UP-5 Package.
- 6- The contractor has to monitor Air, Noise and Water regularly for each season as per agreement conditions until the completion of the works.

10.0 RECOMMENDATION:

The authorities have to take penal action by deducting amount of 3% from the Package UP-5 IPCs due to non-compliance and non-implementation of essential environmental works of the project.

Annexure – 1

***Extracts of relevant contract
agreement conditions.***

Clause 110.2 Drawings scheduling the affected encumbrance such as trees and services like water pipes, sewers, oil pipelines, cables, gas ducts, electricity lines, accessories, telephone poles and OFC cables, etc. including in the contract document shall be verified by the contractor for accuracy of scope.

Clause 110.3 The Employer will make payments to the respective service provider/authorities for cutting trees and shifting of utilities, wherever required. The contractor shall obtain necessary approval from such Authorities after payments by the Employer and also in cases where payments are not required to be made for such shifting. The Employer will also write to all concerned department/service provider organization for expediting and facilitating cutting of trees, shifting of utilities and removal of encroachments, etc.

Clause 110.4 Any services affected by the Works must be temporarily supported by the Contractor who must also take all measures reasonably required by the various bodies to protect their services and properly during the progress of the works. It shall be deemed to be part of the Contract and no extra payment shall be made for the same.

Clause 110.5 The Contractor may be required to carry out certain works for and on behalf of various bodies and he shall also provide, with the prior approval of the Engineer, such assistance to the various bodies as may be authorized by the Engineer.

Clause 110.6 Payment

For coordinating the work of cutting of trees, shifting of utilities and removal of encroachments, etc. no separate payment will be made and these will be incidental to the work.

CLAUSE 111

PRECAUTIONS FOR SAFEGUARDING THE ENVIRONMENT

Sub-Clause 111.1

General

Delete the text of Clause 111.1 in its entirety and substitute the following:

"The Contractor shall take all necessary measures and precautions and otherwise ensure that the execution of the Works and all associated operations on site or off-site are carried out in conformity with statutory and regulatory requirements including those prescribed elsewhere in this document. The provisions specified in the Environment Management Plan Report shall be followed as guidelines.

The Contractor shall take all measures and precautions to avoid any nuisance or disturbance arising for the execution of the Works. This shall wherever possible be achieved by suppression of the nuisance at source rather than abatement of the nuisance once generated. All vehicles deployed for material haulage shall be spillage proof.

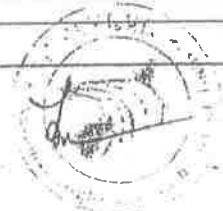
Haul roads shall be inspected at least once daily to clear any accidental spillage. In the event of any spoil, debris, wastes or any deleterious substance from the Site being deposited on any adjacent land, the Contractor shall immediately remove all such material at no cost to the Contract and restore the affected area to its original state to the satisfaction of the Engineer."

Sub-Clause 111.2

Borrow Pits for Embankment Construction

Delete the text of Clause 111.2 and substitute the following:

"Prior approval shall be sought from the concerned State Authorities, and the Contractor shall comply with all local environmental regulations. For all borrow areas, the actual extent of areas/zones to be excavated shall be demarcated with the signboards and the operational areas shall be access controlled.



Sub-Clause 111.3

Quarry Operations

Delete the text of Clause 111.3 and substitute the following:

"Aggregates shall be sourced only from quarry sites that comply with the local/state environmental and other applicable regulations. Occupational safety procedures/practices for the work force in all quarries shall be in accordance with applicable laws. Quarry and crushing units shall have adequate dust suppression measures, such as sprinklers, in work areas and along all approach roads to the quarry sites. These shall be preferably be located on the upwind side."

Sub-Clause 111.5

Pollution from Hot-Mix Plant and Batching Plants

Delete the 1st sentence of Clause 111.5 and substitute the following:

"Bituminous hot mix plant and concrete batching plants shall be located at least one (1) km away from the sensitive receptors (schools, hospitals, etc.) and at least 500m from urban settlements, unless otherwise required by the statutory requirements."

Sub-Clause 111.8

Add the following text at the end of Clause 111.8:

Water tankers with suitable sprinkling system shall be deployed along the haulage roads and in the work sites. Water shall be sprinkled regularly all along the routes to suppress airborne dusts from truck/dumper movements particularly on unpaved roads. Actual frequency will be agreed with the Engineer to suit site conditions."

After Clause 111.12 add the following new Clauses 111.13 to 111.23

Sub-Clause 111.13

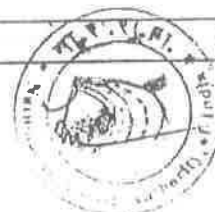
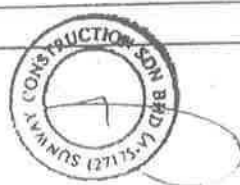
Haulage Roads

Existing roads used for hauling shall be strengthened and/ or widened by the Contractor in accordance with the requirements for normal and construction traffic. Where such roads are not existing, the Contractor shall construct project specific single lane paved roads in settlement areas and gravel roads in open areas conforming to the Ministry of Road Transport and Highways (MORTH) specifications.

The alignment of the haulage roads shall be fixed to avoid agricultural land to the extent possible. In unavoidable circumstances, suitable compensation shall be paid to the people whose land will be temporarily acquired for the duration of the operations. The compensation shall cover for loss of income for the duration of temporary acquisition and land restoration. Prior to the construction of the haul roads, topsoil shall be stripped and stockpiled for re-use.

Material dumping sites shall be access controlled to prevent the unauthorized entry of the people, grazing cattle and stray animals.

Haulage roads shall be reinstated upon completion of hauling for the use of local communities."



The work shall be so planned and executed that the best available materials are saved for the subgrade and the embankment portion just below the subgrade.

305.2.2.2. Borrow materials : Where the materials are to be obtained from designated borrow areas, the location, size and shape of these areas shall be as indicated by the Engineer and the same shall not be opened without his written permission. Where specific borrow areas are not designated by the Employer/the Engineer, arrangement for locating the source of supply of material for embankment and subgrade as well as compliance to environmental requirements in respect of excavation and borrow areas as stipulated, from time to time by the Ministry of Environment and Forests, Government of India and the local bodies, as applicable, shall be the sole responsibility of the Contractor.

Borrowpits along the road shall be discouraged. If permitted by the Engineer, these shall not be dug continuously. Ridges of not less than 8 m width should be left at intervals not exceeding 300 m. Small drains shall be cut through the ridges to facilitate drainage. The depth of the pits shall be so regulated that their bottom does not cut an imaginary line having a slope of 1 vertical to 4 horizontal projected from the edge of the final section of the bank, the maximum depth in any case being limited to 1.5 m. Also, no pit shall be dug within the offset width from the toe of the embankment required as per the consideration of stability with a minimum width of 10 m.

Haulage of material to embankments or other areas of fill shall proceed only when sufficient spreading and compaction plant is operating at the place of deposition.

No excavated acceptable material other than surplus to requirements of the Contract shall be removed from the site. Should the Contractor be permitted to remove acceptable material from the site to suit his operational procedure, then he shall make good any consequent deficit of material arising therefrom.

Where the excavation reveals a combination of acceptable and unacceptable materials, the Contractor shall, unless otherwise agreed by the Engineer, carry out the excavation in such a manner that the acceptable materials are excavated separately for use in the permanent works without contamination by the unacceptable materials. The acceptable materials shall be stockpiled separately.

The Contractor shall ensure that he does not adversely affect the

406.8. Measurement and Payment

Wet mix macadam shall be measured as finished work in position in cubic metres.

406.9. Rates

The contract unit rate for wet mix macadam shall be payment in full for carrying out the required operations including full compensation for all components listed in Clause 401.8.

407. SHOULDERS, ISLANDS AND MEDIAN

407.1. Scope

The work shall consist of constructing shoulder (hard/paved/earthen with brick or stone block edging) on either side of the pavement, median in the road dividing the carriageway into separate lanes and islands for channelising the traffic at junctions in accordance with the requirements of these Specifications and in conformity with the lines, grades and cross-sections shown on the drawings or as directed by the Engineer.

407.2. Materials

Shoulder on either side of the road may be of selected earth/granular material/paved conforming to the requirements of Clause 305/401 and the median may be of selected earth conforming to the requirements of Clause 305.

Median/Traffic islands shall be raised and kerbed at the perimeter and the enclosed area filled with earth and suitably covered with grass turf/shrubs as per Clause 307 and/or paved as per Clause 409.3.4 or 409.3.5.

Paved shoulders shall consist of sub-base, base and surfacing courses, as shown in the drawings and materials for the same shall conform to relevant Specifications of the corresponding items. Where paved or hard shoulders are not provided, the pavement shall be provided with brick/stone block edgings as shown in the drawings. The bricks shall conform to Clause 1003 of these Specifications. Stone blocks shall conform to Clause 1004 of these Specifications and shall be of size 225 mm x 110 mm x 75 mm.

407.3. Size of Shoulder, Median and Islands

Shoulder (earthen/hard/paved)/median/traffic island dimensions shall be as shown on the drawings or as directed by the Engineer.

407.4. Construction Operations

407.4.1. Shoulders: The sequence of operations for the construction of paved shoulder is laid in layers shall be the thickness of adjoining pavement layer. Only after a layer of pavement and corresponding layers in paved and earth shoulder portions have been laid and compacted, the construction of next layer of pavement and shoulder shall be taken up.

Where the materials in adjacent layers are different, these shall be laid together and the pavement layer shall be compacted first. The corresponding layer in paved shoulder portion shall be compacted thereafter, which shall be followed by compaction of earth shoulder layer. The adjacent layers having same material shall be laid and compacted together.

In all cases where paved shoulders have to be provided along side of existing carriageway, the existing shoulders shall be excavated in full width and to the required depth as per Clause 301.3.7. Under no circumstances, box cutting shall be done for construction of shoulders.

Compaction requirement of earthen shoulder shall be as per Table 300-2. In the case of bituminous courses, work on shoulder (earthen/hard/paved), shall start only after the pavement course has been laid and compacted.

During all stages of shoulder (earthen/hard/paved) construction, the required crossfall shall be maintained to drain off surface water.

Regardless of the method of laying, all shoulder construction material shall be placed directly on the shoulder. Any spilled material dragged on to the pavement surface shall be immediately removed, without damage to the pavement, and the area so affected thoroughly cleaned.

407.4.2. Median and Islands : Median and Islands shall be constructed in a manner similar to shoulder up to the road level. Thereafter the median and islands, if raised, shall be raised at least 300 mm by using kerb stones of approved material and dimensions and suitably finished, and painted as directed by the Engineer. If not raised, the median and islands shall be differentiated from the shoulder/pavement as the case may be, as directed by the Engineer. The confined area of the median and islands shall be filled with local earth or granular material or any other approved material and compacted by plate compactor/power rammer. The confined area after filling with earth shall be turfed with grass or planted with shrubs and in case of granular fill it can be finished with tiles/slabs as directed by the Engineer.

Temporary erosion, sedimentation and pollution control may include construction work outside the right-of-way where such work is necessary as a result of road construction such as borrow pit operation, service roads and equipment storage sites.

The temporary erosion, sedimentation and pollution control features installed by the Contractor shall be acceptably maintained by him where these are needed, unless otherwise agreed by the Engineer.

306.4. Measurements for Payment

The soil erosion, sedimentation and pollution control works will be measured in terms of units specified in the Bill of Quantities for respective items.

306.5. Rates

The Contract unit rate for different items of soil erosion, sedimentation and pollution control works shall be payment in full for carrying out all required operations including full compensation for all labour, tools, equipment and incidentals to complete the works to the Specifications.

307. ~~TEMPORARY EROSION CONTROL~~

307.1. Scope

This work shall consist of furnishing and laying of the live sod perennial turf forming grass on embankment slopes, verges (earth shoulders) or other locations shown on the drawings or as directed by the Engineer. Unless otherwise specified, the work shall be taken up as soon as possible following construction of the embankment, providing the season is favourable for establishment of the sod.

307.2. Materials

The sod shall consist of dense, well-rooted growth of permanent desirable grasses, indigenous to the locality where it is to be used, and shall be practically free from weeds or other undesirable matter. At the time the sod is cut, the grass on the sod shall have a length approximately 50 mm and the sod shall have been freed of debris.

Thickness of the sod shall be as uniform as possible, with some 50 mm or so of soil covering the grass roots depending on nature of the sod, so that practically all the dense-root system of grasses is retained in the sod strip. The sods shall be cut in rectangular strips of uniform width, not less than about 250 mm x 300 mm in size but not so large that it is inconvenient to handle and transport them.

without damage. During wet weather, the sod shall be allowed to dry sufficiently to prevent rearing during handling and during dry weather shall be watered before lifting to ensure its vitality and prevent the dropping of the soil in handling.

307.3. Construction Operations

307.3.1. Preparation of the earth bed : The area to be sodded shall have been previously constructed to the required slope and cross section. Soil on the area shall be loosened, freed of all stones larger than 50 mm size, sticks, stumps and any undesirable foreign matter, and brought to a reasonably fine granular texture to a depth of not less than 25 mm for receiving the sod.

Where required, topsoil shall be spread over the slopes. Prior to placing the topsoil, the slopes shall be scarified to a depth which, after settlement, will provide the required nominal depth shown on the plans. Spreading shall not be done when the ground is excessively wet.

Following soil preparation and top soiling, where required, fertilizer and ground limestone when specified shall be spread uniformly at the rate indicated on the plans. After spreading, the materials are incorporated in the soil by discing or other means to the depths shown on the plans.

307.3.2. Placing the sods : The prepared sod bed shall be moistened to the loosened depth, if not already sufficiently moist, and the sod shall be placed thereon within approximately 24 hours after the same had been cut. Each sod strip shall be laid edge to edge and such that the joints caused by abutting ends are staggered. Every strip, after it is snugly placed against the strips already in position, shall be lightly tamped with suitable wooden or metal tampers so as to eliminate air pockets and to press it into the underlying soil.

On side slopes steeper than 2 (horizontal) to 1 (vertical), the laying of sods shall be started from bottom upwards. At points where water may flow over a sodded area, the upper edges of the sod strips shall be turned into the soil below the adjacent area and a layer of earth placed over this followed by its thorough compaction.

307.3.3. Staking the sods : Where the side slope is 2 (horizontal) to 1 (vertical) or steeper and the distance along the slope is more than 2 m, the sods shall be staked with pegs or nails spaced approximately 500 to 1000 mm along the longitudinal axis of the sod strips. Stakes shall be driven approximately plumb through the sods to be almost flush with them.

Rehabilitation and up-gradation of NH-25 to 4-Lane configuration from Km 104.000 to Km 170.000	NHAI
Civil Contract Package EW-II (UP-IV) – Technical Specifications	

Any vehicle with an open load-carrying area used for transporting potentially dust-producing material shall have properly fitting side and tail boards. Materials having the potential to produce dust shall not be loaded to a level higher than the side and tail boards and shall be covered with clean tarpaulins in good condition. The tarpaulin shall be properly secured and extend at least 300mm over the edges of the side of the side and tail boards.

The Contractor shall monitor air-quality once weekly in all operational areas under the project and take the necessary steps to comply with the specified requirements. Air quality parameters will include SPM, RPM, SO₂, NO₂, HC and CO. Operational areas include work sites, haulage roads, hot mix plants, quarries, crushing plants, stockpiles, borrow sites and spoil disposal sites.

Sub-Clause 111.17 Noise Control

The Contractor shall consider noise as an environmental constraint in the planning and execution of the Works.

The Contractor shall take all necessary measures so that the operation of all mechanical equipment and construction processes on and off the site shall not cause any unnecessary or excessive noise, taking in to account applicable environmental requirements. The Contractor shall use all necessary measures and shall maintain all plant and silencing equipment in good conditions so as to minimize the noise emission during construction works.

Any member of the work force likely to be exposed to beyond their threshold noise levels shall be provided with protective equipment, such as earplugs, and shall be rotated every four hours.

Construction operations shall be limited to daytime hours only, particularly in the settlement areas.

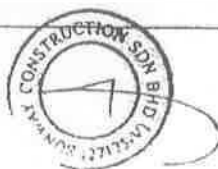
Sub-Clause 111.18 Vibration Control

The Contractor shall take measures during construction activities to control the movement of the work force and construction machinery/equipment, and to avoid/minimize activities, which produce vibrations.

Sub-Clause 111.19 ~~Construction Camps~~

The construction camps shall conform to the State and National building regulations as applicable. The area for the storage of polluted materials shall be stored on impervious floors and shall be surrounded by impervious ditches in order to avoid spilling of polluted material to surrounding areas.

Construction camps shall be properly arranged to avoid noise pollution to the nearby habitants and to avoid contamination of river and canals from wastewater drainage. To prevent such contamination, wastewater generated at the campsites shall be discharged in to soak pits. These shall be of sufficient capacity to contain 120% of estimated volume. These shall be regularly cleaned and maintained to be effective. Human excreta shall be treated through septic tanks prior to discharge and shall conform to directives and guidelines of the State. Water accumulated in tires, empty vessels and containers of all nature will be regularly cleaned to avoid the related health hazards.



Sub-Clause 111.20 Control and Disposal of Wastes

The Contractor shall control the disposal of all forms of waste generated by the construction operations and in all associated activities. No uncontrolled deposition or dumping shall be permitted. Wastes to be so controlled shall include, but shall not be limited to, all forms of fuels and engine oils, all types of bitumen, cement and surplus aggregates, gravels, bituminous mixtures etc. The Contractor shall make specific provision for the proper disposal of these and any other waste products, conforming to local regulations and acceptable to the Engineer.

Spilling of oil and bituminous products during construction and transport shall be avoided to reduce the chances of contamination of surface as well as ground water.

Degraded materials shall be disposed of in a manner as approved by the Engineer and wastewater shall be disposed into septic tanks and soak pits etc. The Contractor shall make arrangements to cleanup spoil as soon as the work finishes in a stretch. If such sites are located outside the ROW, restoration of the site to a level acceptable to the land owner(s) will be carried out within a time period agreed between landowner(s) and the Contractor. Separators shall be used to separate POL materials from wastewater prior to discharging to the watercourses or as approved by the Engineer in conformance with directives and guidelines.

Disposal of solid waste materials shall be outlined in a plan for which environmental clearances shall be obtained from State environmental regulatory authorities. Potential locations for solid waste disposal are the natural depressions and borrow areas. The areas used for dumping of uncontaminated debris shall be covered with 300mm soil and shall be planted.

depressed areas whose depth is less than 100mm, the area will be covered with 100mm thick soil layer, and the area will be covered with 100mm thick soil layer.

Sub-Clause 111.21 Transport of Hazardous Materials

Transport of all hazardous materials, in bulk or in sealed containers, shall meet the requirements of the State regulations. Prior to ordering transport of hazardous material in bulk, the Contractor must obtain the approval of the relevant authority as well as of the Engineer. Precautionary measures and conformity with regulations shall be stated in a Method Statement for the approval of the Engineer. Sealed containers of hazardous materials shall be stored in a well-ventilated room, well guarded and secured.

Sub-Clause 111.22 Emergency Response

The Contractor shall plan and provide remedial measures to be implemented in the event of occurrence of emergencies such as spillages of oil or bitumen or chemicals. The Contractor shall provide the Engineer with a statement of the measures he intends to implement in the event of such an emergency, which shall include a statement of how he intends to provide personnel adequately trained to implement such measures.

Sub-Clause 111.23 Measurement

~~Monitoring of Air/Water/Noise and Soil quality shall be paid as per minutes of~~
~~same as stated above:~~

For Compliance of all other provisions made in this Clause 111, it shall be deemed to be incidental to the work and no separate measurement shall be made. The Contractor shall be deemed to have made allowance for such compliance with these provisions in the preparations of his prices for items of work included in the Bills of Quantities and full compensation for such compliance shall be deemed to be covered by them."

Annexure – 2

***Environmental Clearances
(UPSB) for package UP-5***

Urge to stay Ahead

INTERNATIONAL LIM

IRCON

इंटरनेशनल लिमिटेड

भारत

Head Office : 4 District Centre Saket, New Delhi
Phone : 91-011-29565656 FAX : 91-011-29562200-2
E-mail : info@ircon.co.in

Head Office : 4 District Centre Saket, New Delhi
Phone : 91-011-29565656 FAX : 91-011-29562200-2
E-mail : info@ircon.co.in

Head Office : 4 District Centre Saket, New Delhi
Phone : 91-011-29565656 FAX : 91-011-29562200-2
E-mail : info@ircon.co.in

No. IRCON/1020/NHAI/UP-05/Renardet/21/67

January 18, 2013

Acting Team Leader, *22/01/13*
M/s RENARDET S.A. INGENIEURS CONSEILS,
J.K. Colony, Near J.K. Hospital, Shivpuri Road,
Jhansi - 284 003 (U.P.),

Sub.: Rehabilitation and Upgrading of NH-25 from Km. 170+000 to Km. 220+000 to four lane configuration in the State of Uttar Pradesh, Package No. EW-II (UP-05).
- Certificate from U.P. Pollution Control Board for the period ending 31.12.2013.

Dear Sir,

Enclosed, please find herewith the clearance certificate from U.P. Pollution Control Board as per following details:-

- [1] Certificate No.2073/QIC-282/Water Pollution/13 dated 10.01.2013
- Certificate towards Water
- [2] Certificate No.2074/QIC-282/13 dated 10.01.2013
- Certificate towards Air

The above certificates are valid up the period 01.01.2013 to 31.12.2013. ✓

This is for your information and record, please.

Thanking you and assuring you of our best services all times.

Yours faithfully

[Signature]
[K.K. Maurya] 18/1/13
Project Manager

Encls: As above (Total 12 Pages).

c.c.to: Project Director, NHAI, PIU, Jhansi - For kind information please.

Dr. S. D. BADRINATH,

For information & Guidance

Seti Kanat
22/01/13

[Signature]

जिला कार्यालय सी 4 डिस्ट्रिक्ट सेंटर, साकेत नई दिल्ली
Regd. Office : C-4 District Centre Saket, New Delhi
Tel : + 91-011-29565656 FAX : 91-011-29562200-2
E-mail : info@ircon.co.in





क्षेत्रीय कार्यालय
उ० प्र० प्रदूषण नियंत्रण बोर्ड
आवास विकास कालोनी (तालपुरा योजना)
कानपुर रोड, झांसी।

संदर्भ संख्या--2073/8IC-282/जल प्रदूषण/12

दिनांक--10/01/13

सेवा में,

मेसर्स इरकान इन्टरनेशनल लि०,
बडागौंव, उरई, जालौन।

विषय--जल (प्रदूषण निवारण एवं नियंत्रण) अधिनियम, 1974 तथा धारा 25/26 और इसके संशोधित अधिनियम 1978 के अन्तर्गत घरेलू/प्रक्रिया जनित उत्प्रवाह के निस्तारण हेतु सहमति।

महोदय,

कृपया अपने पत्रांक शून्य दिनांक--17.12.2012 के साथ संलग्न सहमति आवेदन पत्र का संदर्भ लें। आपके सहमति आवेदन पत्र का परीक्षण किया गया तथा सशर्त सहमति आदेश पत्रांक 4086 दिनांक--10.01.13 संलग्न है। आपका ध्यान निम्न बिन्दु संख्या 01 से 11 पर आवश्यक कार्यवाही करने हेतु दिलाया जा रहा है।

1. सहमति शर्तों तथा निम्न बिन्दुओं का कड़ाई से पालन किया जाना सुनिश्चित करें तथा अनुपालन आख्या पत्र प्राप्ति के एक माह के भीतर प्रेषित करें।
2. जल सप्लाई श्रोत के विभिन्न बिन्दुओं पर उत्प्रवाह मापक मीटर अवश्य लगवायें। उत्प्रवाह मीटर की मापी गई रीडिंग हर महीने समय पर अवश्य भेजें।
3. उद्योग से प्रतिदिन निस्तारित होने वाले उत्प्रवाह को मापने हेतु ड्रेन के अंतिम निस्तारण बिन्दु से पूर्व वी-नाच या अन्य कोई मापक यंत्र लगवायें। वी-नाच की मापी गई रीडिंगें तथा केलीब्रेशन चाट समय-समय पर प्रेषित करें।
4. घरेलू उत्प्रवाह शुद्धीकरण संयंत्र के डिजाइन तथा विस्तृत विवरण और जल निस्तारण व्यवस्था का रेखांकित मानचित्र (ले आउट प्लान) इस पत्र प्राप्ति के एक माह के भीतर प्रेषित करें।
5. आपके उद्योग की आडिट की हुई वर्ष 2012-2013 की बैलेन्सशीट की प्रतिलिपि या चार्टर्ड एकाउण्टेन्ट द्वारा पूर्ण विनियोजन (अचल सम्पत्ति +वर्तमान सम्पत्ति - वर्तमान देनदारियों) का सत्यापन प्रमाण-पत्र प्रेषित करने के निर्देश दिये जाते हैं, जिससे कि आपके द्वारा देय सहमति शुल्क की जांच की जा सके।
6. यह सहमति केवल घरेलू उत्प्रवाह के निस्तारण हेतु मान्य है। औद्योगिक उत्प्रवाह किसी भी स्थिति में निस्तारित न किया जाये।
7. कृपया स्थापित उत्प्रवाह शुद्धीकरण संयंत्र का प्रभावी संचालन तथा रख-रखाव सुनिश्चित करें जिससे की उत्प्रवाह का निस्तारण बोर्ड द्वारा निर्धारित मानकों के अनुरूप हों।
8. कृपया ठोस अपशिष्ट पदार्थों को इस प्रकार से निस्तारित करना सुनिश्चित करें, जिससे की नदी सरिता, भूमिगत जल या अन्य किसी श्रोत का जल प्रदूषित न हो।

9. उचित मात्रा में वृक्षारोपण करें, जिससे कि वातावरण में सुधार हो तथा प्रगति आख्या हर तीसरे महीने भेजें।
10. आपको उपर अधिनियम 1977 में वांछित नियमों का पूर्णतया पालन करने और बोर्ड को इस सम्बन्ध में प्रगति भेजने की सलाह दी जाती है।
11. यह सहमति आदेश आवेदन दिनांक—17.12.2012 में अंकित उत्पादन व जल की खपत के लिये वैध है। उत्पादन क्षमता अथवा जल की मात्रा में वृद्धि करनी हो तो बोर्ड से आवश्यक स्वीकृति प्राप्ति कर ही करें।

इस सहमति आदेश में अंकित प्राविधान तथा सहमति शर्तों के होते हुए भी उ० प्र० प्रदूषण नियंत्रण बोर्ड, जल (प्रदूषण निवारण एवं नियंत्रण) अधिनियम, 1974 तथा इसके संशोधित अधिनियम 1978 की धारा 27 (2) के अन्तर्गत उपरोक्त वर्णित किसी भी/सभी शर्तों में पुनः विचार करने या संशोधन के लिये, अधिनियम के अनुसार जो उचित हो, का अधिकार व शक्ति, बोर्ड के लिये आरक्षित रखती है।

लखनऊ—उपरोक्तानुसार।

भवदीय



(राम गोपाल)
क्षेत्रीय अधिकारी

तद दिनांक—.....

प्रतिलिपि—

- मुख्य पर्यावरण अधिकारी (वृत्त-2) उ० प्र० प्रदूषण नियंत्रण बोर्ड, लखनऊ को सूचनार्थ एवं आवश्यक कार्यवाही हेतु प्रेषित।
2. महाप्रबन्धक जिला उद्योग केन्द्र को सूचनार्थ प्रेषित।



क्षेत्रीय अधिकारी

क्षेत्रीय कार्यालय



उ० प्र० प्रदूषण नियंत्रण बोर्ड

आवास विकास कालोनी (तालपुरा योजना)

कानपुर रोड, झांसी।

केवल सरिता/भूमि में निस्तारण के लिए वर्तमान
/बदली हुई क्षमता के लिये
फार्म-XV

सहमति आदेश पत्र
(लघु श्रेणी के उद्योगों हेतु सहमति)

संख्या- ६५०६ /सहमति (जल) आदेश / १३ झांसी

दिनांक- १०/०१/१३

विषय:-सहमति मेसर्स इरकान इन्टरनेशनल लि०, बडागाँव, उरई, जालौन जल (प्रदूषण निवारण एवं नियंत्रण) अधिनियम, १९७४ की धारा-२५/२६ के अन्तर्गत उत्प्रवाह निस्तारण हेतु सहमति।

संदर्भ : आवेदन संख्या शून्य

दिनांक-१७.१२.२०१२

१. जल राशि या सीवर में या भूमि पर बहिःश्राव के निस्तारण के लिये जल (प्रदूषण निवारण एवं नियंत्रण) अधिनियम, १९७४ जिसे आगे उक्त अधिनियम कहा गया है, के अधीन सहमति प्राप्त करने के लिए उपर्युक्त आवेदन पत्र के निर्देश में मेसर्स इरकान इन्टरनेशनल लि०, बडागाँव, उरई, जालौन को उसके परिसर से निकलने वाले उसके घरेलू नगरपालिका/औद्योगिक बहिःश्राव के स्थानीय सरिता/नदी/कुयें में/भूमि पर निस्तारण करने के लिए अनुलग्नक में उल्लिखित सामान्य और विशेष शर्तों के अनुसार बोर्ड द्वारा प्राधिकार दिया जाता है।
२. यह सहमति दिनांक ०१.०१.२०१३ से ३१.१२.२०१३ की अवधि तक विधि मान्य है।
३. इस सहमति आदेश में अंकित प्राविधानों तथा सहमति शर्तों के होते हुए भी उत्तर प्रदेश प्रदूषण नियंत्रण बोर्ड, जल (प्रदूषण निवारण एवं नियंत्रण) अधिनियम १९७४ और इसके संशोधित अधिनियम १९७८ की धारा २७ (२) के अन्तर्गत वर्णित किसी भी/सभी शर्तों पर पुनः विचार करने या संशोधन के लिये अधिनियम के अनुसार जो उचित हो का अधिकार व शक्ति बोर्ड आरक्षित रखती है। उत्तर प्रदेश प्रदूषण नियंत्रण बोर्ड के लिए और उसकी ओर से


क्षेत्रीय अधिकारी

संलग्नक : अनुलग्नक
(सहमति शर्त)

उत्तर प्रदेश प्रदूषण नियंत्रण बोर्ड

झांसी

सहमति आदेश संख्या सहमति (जल) आदेश / दिनांक-.....
सहमति शर्तें

1. अधिकतम दैनिक उत्प्रवाह और प्रति घंटे में निस्तारित होने वाले उत्प्रवाह की दर निम्न से अधिक नहीं होनी चाहिए।

उत्प्रवाह का प्रकार

अधिकतम दैनिक
निस्तारण मी^3

अधिकतम प्रति घंटा
निस्तारण मी^3

- (i) घरेलू
(ii) औद्योगिक
(अ) प्रक्रिया जल
ब्लीड धोने के
जल सहित

(ब) शीतल जल

2. ब्लीड जल सहित प्रक्रिया में प्रयुक्त जल तथा घरेलू उत्प्रवाह को एकत्र करने के लिये अलग-अलग बन्द जल प्रवाह की व्यवस्था बनाई जाए। एकत्र करने की व्यवस्था के अंतिम छोर पर टर्मिनल मेनहोल, उत्प्रवाह मापन तथा उत्प्रवाह का नमूना एकत्र करने की व्यवस्था होनी चाहिए। कोई भी उत्प्रवाह टर्मिनल, मेनहोल के डाउन स्ट्रीम पर सीवर में प्रवेश नहीं करना चाहिए। सहमति आवेदन पत्र में सूचित उत्प्रवाह के अलावा अन्य कोई उत्प्रवाह एकत्र करने की व्यवस्था में प्रवेश नहीं करना चाहिये तथा वह भी सुनिश्चित करें कि घरेलू उत्प्रवाह स्ट्रीम वाटर ड्रेन में निस्तारित न हो।।
3. घरेलू उत्प्रवाह सेप्टिक टैंक या अन्य शुद्धीकरण संयंत्र में शुद्धीकृत किया जाये जिससे शुद्ध जल उत्प्रवाह निम्न मानकों के अनुरूप हो।

20° से 0 पर 5 दिन की बीओडी

30 मिग्रा/ली0 से अधिक न हो

100 मिग्रा/ली0 से अधिक न हो

कुल निलम्बित ठोस

4. सभी प्रक्रियाओं से जनित उत्प्रवाह, ब्लीड जल, शीतलन उत्प्रवाह, कर्ष व उपकरणों की धुलाई से जनित उत्प्रवाह सहित औद्योगिक उत्प्रवाह निस्तारित होने से पूर्व इस प्रकार शुद्धीकृत किया जाये कि उत्प्रवाह बोर्ड द्वारा संख्या 713/37/83/19/ए.आर.एन. दिनांक-6.4.83 में निर्धारित मानकों के अनुरूप हो।

5. अन्य प्रचालक जिनके मान मानकों में न दिये हों उनका मान उद्योग में निर्माण प्रक्रिया में प्रयुक्त किये जाने वाले जल के मानकों से अधिक नहीं होना चाहिये।

6. घरेलू तथा औद्योगिक उत्प्रवाह के नमूने एकत्र करने व विश्लेषित करने की विधि भारतीय मानक 4733 व 2488 और इसके बाद के संशोधनों के अनुरूप होनी चाहिये।

7. विश्लेषित करने के लिये नमूना शर्त संख्या 02 में संदर्भित टर्मिनल मेनहोल से एकत्रित किया जाना चाहिए।

8. शर्त संख्या 2 में संदर्भित मेनहोल ऊपर से ढके, ताले लगाने की व्यवस्था युक्त कम से कम 15×15 साइज और आवश्यक गहराई के ईट या सीमेंट कंक्रीट के चेम्बर होने चाहिये। टर्मिनल मेनहोल में उत्प्रवाह नापने तथा विश्लेषण के लिये नमूना लेने की व्यवस्था उपलब्ध होनी चाहिए।

9. शुद्धीकृत घरेलू व औद्योगिक उत्प्रवाह मिलाकर (उपरोक्त शर्त संख्या 2 के प्राविधानों के अनुसार) एक ही निस्तारण बिन्दु से निस्तारित किया जाये। इस संयुक्त उत्प्रवाह निस्तारण बिन्दु पर उत्प्रवाह मापने की व्यवस्था होनी चाहिए।
10. शुद्धीकृत घरेलू व औद्योगिक उत्प्रवाह शर्त संख्या 9 में वर्णित संयुक्त निस्तारण बिन्दु से अन्तिम निस्तारण बिन्दु सेप्टिकटैंक/सोकपिट में पक्के, ढके हुए बन्द पाइप युक्त ड्रेन से होकर निस्तारित किया जाये। पक्की ड्रेन या बन्द पाइपों को इस प्रकार बिछाना चाहिए जिससे कि अनाधिकृत व्यक्तियों द्वारा उसमें नुकसान न पहुँचाया जाये। टर्मिनल निस्तारण बिन्दु को भी टर्मिनल मेनहोल की भाँति बनाया जाये/बंद पाइपों में स्थल की आवश्यकता के अनुसार माध्यमिक निरीक्षण कक्ष बनवाये जाये।
11. इन शर्तों का विशेष रूप से उत्प्रवाह शुद्धीकरण, उत्प्रवाह मापन, नमूना एकत्र करने की व्यवस्था, टर्मिनल मेनहोल व टर्मिनल निस्तारण बिन्दु के सम्बन्ध में दिनांक एक माह या उसके पहले पूर्ण अनुपालन किया जाये।
12. बोर्ड से निर्गत सहमति आदेश की प्राप्ति के 30 दिन के भीतर तथा उसके बाद प्रत्येक महीने की दस तारीख तक मासिक प्रगति आख्या, सहमति शर्तों की अनुपालन आख्या के साथ प्रेषित की जाये।
13. विस्तृत निर्माण स्थल, रेखाचित्र, उत्प्रवाह ले जाने वाली पाइप लाइन की अनुदैर्ध्य काट व प्लान तथा शर्त 8, 9 व 10 में वर्णित अन्तिम निस्तारण बिन्दु का स्थल रेखाचित्र इस सहमति आदेश के जारी करने के एक माह के भीतर बोर्ड को भेजें।
14. परिसर में एकत्र होने वाले बरसात/तुफान के जल को भली भाँति रखा जाए किसी भी बिन्दु पर घरेलू व औद्योगिक अपशिष्ट से मिलने न दिया जाए। कच्चे माल, उत्पादन या अन्य कोई पदार्थ जो तुफानी जल के साथ बहकर जा सकते हों, का खुले में ढेर न लगाया जाए।
15. फैक्ट्री परिसर में उत्पन्न होने वाले सभी ठोस अपशिष्ट पदार्थ का भली भाँति वर्गीकरण व निम्न प्रकार से निस्तारण किया जाये:-
 - (i) अक्रिय पदार्थ होने पर उसका भूमि भराव के लिए इस प्रकार प्रयोग सुनिश्चित किया जाए कि रिसाव की स्थिति पैदा न हो जिससे कि वह भूमिगत जल में प्रवेश न करें या बरसाती, तुफानी जल के द्वारा बहा न दिया जाए।
 - (ii) ज्वलनशील कार्बनिक पदार्थ होने पर नियंत्रित प्रज्वलन किया जाए।
 - (iii) जैविक अवघट्य पदार्थ होने पर कम्पोस्टिंग की जाए।
16. विषैले पदार्थों का विषैलापन अगर सम्भव हो सके तो दूर किया जाए अन्यथा उन्हें बोर्ड की लिखित अनुमति प्राप्त कर सुरक्षित क्षेत्रों में मुहरबंद स्टील ड्रम में रखा और दफनाया जाये। विषमुक्त करने या मुहरबंद करने और दफनाने का कार्य बोर्ड के अधिकृत व्यक्ति की उपस्थिति में ही अनुमति लेकर किया जाए।
17. यदि फैक्ट्री के किसी संयंत्र/संयंत्रों कोई दोषपूर्ण स्थिति उत्पन्न हो जिसके फलस्वरूप निस्तारित उत्प्रवाह की मात्रा बढ़ जाये और/उपरोक्त पैरा 3 व 4 में वर्णित मानकों का उल्लंघन हो तो बोर्ड को टेलिग्राफिकली तथा ऑचलिक स्वास्थ्य अधिकारी/मुख्य चिकित्सा अधिकारी को स्थिति बताते हुए सूचित किया जाए।

- प्रार्थी फैक्ट्री के अन्दर व परिसर में अच्छा रख-रखाव स्थापित करें। सभी पाइप, वाल्व, सीवर और ड्रेन रिसावरोधी होने चाहिए। फर्श की धुलाई से जनित उत्प्रवाह, उत्प्रवाह एकत्र करने की व्यवस्था में प्रवेश करना चाहिए और शर्त के अनुसार किसी बरसाती/तूफानी जल की नाली या खुले स्थान पर नहीं जाने दिया जाना चाहिए।
19. प्रार्थी को टर्मिनल, मेनहोल तथा अंतिम निस्तारण बिन्दु पर बोर्ड के स्टाफ या बोर्ड द्वारा अधिकृत एजेन्सी के लिए उत्प्रवाह नमूना एकत्र करने की व्यवस्था करनी चाहिए।
 20. शुद्धीकृत घरेलू व प्रक्रिया जनित उत्प्रवाह का नमूना किसी भी सामान्य उत्पादन कार्य किए जाने वाले दिन तीन महीने में एक बार लिया जाए और उन्हें शर्त संख्या 3 व 4 में दी हुई सीमा के अनुसार सभी प्रचालकों के लिए विश्लेषित किया जाए। संलग्न प्रपत्र के अनुसार पूर्ण विश्लेषण करवाने के बाद तुरन्त/समय-समय पर विश्लेषण आख्या बोर्ड में जमा की जाए।
 21. प्रार्थी/कम्पनी बिना लापरवाही किए इस सहमति आदेश में दिए गये निर्देशों तथा बाद में समय-समय पर निर्गत निर्देशों का अनुपालन करें। प्रार्थी/कम्पनी अगर किसी समय निर्गत किसी आदेश/निर्देश का पालन न करें और या इस सहमति आदेश की शर्तों का उल्लंघन करें तो व कानून/अधिनियम के प्राविधानों के अन्तर्गत विधिक कार्यवाही के लिए उत्तरदायी होंगी।
 22. प्रार्थी बोर्ड की पूर्व लिखित सहमति के बिना अन्तिम निस्तारण बिन्दु और उत्प्रवाह की गुणता व मात्रा, उत्प्रवाह निस्तारण की दर, उत्प्रवाह का तापमान न बदले या परिवर्तन न करें।
 23. उपरोक्त शर्तें जब तक अधिनियम/संशोधित अधिनियम की धारा 27 (2) के अन्तर्गत समाप्त नहीं कर दी जाती हैं, तब तक लागू रहेंगी।
 24. प्रार्थी को सहमति की अवधि समाप्त होने के कम से कम 30 दिन पहले या प्रस्तावित नये या परिवर्तित निस्तारण बिन्दु के चालू होने और या निस्तारण किये जाने के 30 दिन जो भी पहले हो तक सहमति के नवीनीकरण हेतु आवेदन करना चाहिए।
 25. एक निरीक्षण पुस्तिका खोली जानी चाहिए और उसे बोर्ड के अधिकारियों को फैक्ट्री भ्रमण के समय उपलब्ध कराया जाना चाहिए।
 26. प्रार्थी उत्प्रवाह शुद्धीकरण संयंत्र या संस्थान के निर्माण, स्थापना या प्रयोग में लाने सम्बन्धी कोई भी सूचना और जल प्रदूषण निवारण एवं नियंत्रण से सम्बंधित सूचना फैक्ट्री में बोर्ड से आये अधिकारी या बोर्ड को अवश्य उपलब्ध करायें।
 27. फैक्ट्री परिसर से अन्तिम निस्तारण बिन्दु जैसे साल भर बहने वाली नदी या सिंचाई योग्य फार्म, तक उत्प्रवाह ले जाने वाली चैनल, सीवर, ड्रेन या नाले में पर्याप्त प्रवाह सुनिश्चित किया जाए। जल के भराव जिससे एनारोबिक स्थितियाँ या मच्छरों की पैदावार हो, को नहीं होने दिया जाये।
 28. निदेशक (निदेशकों), साझेदार (साझेदारों), प्रोपरइटर के नाम, पते व टेलीफोन की सूची दी जाये।
 29. इस सहमति आदेश में अंकित प्राविधान तथा दिये गये सहमति शर्तों के होते हुए भी उ0 प्र0 प्रदूषण नियंत्रण बोर्ड जल (प्रदूषण निवारण तथा नियंत्रण) अधिनियम, 1974 तथा इसके संशोधित अधिनियम 1978 की धारा 27 (2) के अन्तर्गत उपरोक्त वर्णित किसी भी/सभी शर्तों में पुनः विचार करने या संशोधन के लिए, अधिनियम के अनुसार जो उचित हो, का अधिकार व शक्ति, बोर्ड आरक्षित रखती है।

क्षेत्रीय अधिकारी



क्षेत्रीय कार्यालय
उ० प्र० प्रदूषण नियंत्रण बोर्ड
आवास विकास कालोनी (तालपुरा योजना)
कानपुर रोड, झांसी।

(लघु श्रेणी के उद्योगों हेतु सहमति)

संदर्भ संख्या- 2074 / OI (- 282) / 13

दिनांक- 10/01/13

सेवा में,

मेसर्स इरकान इन्टरनेशनल लि०,
बडागाँव, उरई, जालौन।

विषय: वायु (प्रदूषण निवारण एवं नियंत्रण) अधिनियम, 1981 की धारा-21 के अन्तर्गत सहमति के सम्बंध में।

महोदय,

उपरोक्त विषयक के सम्बंध में कृपया आप अपने आवेदन पत्र दिनांक- 17.12.2012 का अवलोकन करें। आपके आवेदन पत्र का परीक्षण किया गया और आपको सशर्त सहमति आदेश संख्या 1587 सहमति (वायु) आदेश / 13 दिनांक- 10.01.13 को संलग्न किया जा रहा है। आपका ध्यान क्रमांक संख्या 01 से 15 तक जो नीचे वर्णित है, आकर्षित किया जाता है।

1. सहमति में दिये गये शर्तों तथा नीचे दिये गये विभिन्न बिन्दुओं का सख्ती से अनुपालन सुनिश्चित करें एवं इस कार्यालय को अनुपालन आख्या एक माह के अन्दर प्रेषित करना सुनिश्चित करें।
2. 175, 125 के०वीए० क्षमता के डी०जी० सेट संलग्न चिमनी की उँचाई भूतल/भवन छत से 3.0, 3.0 मी० उँचा किया जाये।
3. पत्तू गैस, प्रक्रिया उत्सर्जन तथा वायु गुणता की अनुश्रवण आख्या इस पत्र प्राप्ति के एक माह के अन्दर प्रेषित करना सुनिश्चित करें।
4. वायु प्रदूषण नियंत्रण हेतु व्यवस्था जैसे बैग फिल्टर आदि का प्राविधान, संचालन एवं रख-रखाव इस प्रकार से किया जाये जिससे प्रदूषणकारी अवयवों की मात्रा बोर्ड के द्वारा निर्धारित मानकों के अनुरूप हो।
5. इस पत्र प्राप्ति के एक माह के भीतर समस्त प्रदूषण नियंत्रण व्यवस्थाओं की डिजाइन, कार्य क्षमता सम्बन्धी आख्या एवं अपने उद्योग का ले-आउट प्लान प्रेषित करना सुनिश्चित करें।
6. आपके उद्योग का संचालन इस प्रकार से हो, जिससे वायु मण्डल की गुणता मानकों के अनुरूप रहें।
7. उचित मात्रा में वृक्षारोपण करें जिससे वातावरण में सुधार हो तथा प्रगति आख्या हर तीसरे महीने भेजना सुनिश्चित करें।
8. यह सहमति केवल वर्तमान उत्पादन क्षमता एवं वर्तमान उत्सर्जन की मात्रा के लिये ही मान्य है।
9. आपके उद्योग की आडिट की हुई नवीनतम बैलेंसशीट की प्रतिलिपि या चार्टर एकाउण्टेन्ट द्वारा पूर्ण विनियोजन (अचल सम्पत्ति + वर्तमान सम्पत्ति - वर्तमान देनदारियों) का सत्यापन प्रमाण-पत्र प्रेषित करने के निर्देश दिये जाते हैं, जिससे कि आपके द्वारा देय सहमति शुल्क की जांच की जा सके।
10. ईंधन का प्रयोग, उत्पादन प्रक्रिया अथवा अन्य प्रक्रिया हेतु नहीं किया जायेगा।

11. आपको उपकर अधिनियम 1977 में वांछित नियमों का पूर्णतया पालन करने और बोर्ड को इस सम्बन्ध में प्रति भेजने की सलाह दी जाती है।
12. यह सहमति आदेश आवेदन दिनांक-17.12.2012 में अंकित उत्पादन व ईंधन की खपत के लिये वैध है। उत्पादन क्षमता अथवा ईंधन की खपत में वृद्धि करनी हो तो बोर्ड से आवश्यक स्वीकृति प्राप्ति पर ही करें।
13. ईकाई का संचालन इस प्रकार से किया जाये जिससे वायु प्रदूषण बोर्ड मानकों के अनुरूप रहें।
14. उद्योग में स्थापित वायु प्रदूषण नियंत्रण व्यवस्थाओं का नियमित रूप से संचालन किया जाये।
15. उद्योग द्वारा प्रत्येक छिमाही में बोर्ड से अथवा मान्यता प्राप्त प्रयोगशाला से परिवेशीये वायु अनुश्रवण कराकर आख्या कार्यालय को प्रेषित की जाये।

इस सहमति आदेश में अंकित सूचना तथा सहमति शर्तों के होते हुये भी उ० प्र० प्रदूषण नियंत्रण बोर्ड, वायु (प्रदूषण निवारण तथा नियंत्रण) अधिनियम 1981 तथा इसके संशोधित अधिनियम 1987 के अन्तर्गत उपरोक्त वर्णित किसी भी/सभी शर्तों में पुनः विचार करने के लिये, जो उचित हो, वह परिवर्तन करने का अधिकार व शक्ति, बोर्ड के लिये आरक्षित रखती है।

संलग्नक:-उपरोक्तानुसार।

भयदीय
(राम गोपाल)

क्षेत्रीय अधिकारी

संदर्भ संख्या/वायु प्रदूषण/..... तद दिनांक-.....

प्रतिलिपि:-मुख्य पर्यावरण अधिकारी (वृत्त-2) उ० प्र० प्रदूषण नियंत्रण बोर्ड, लखनऊ को सूचनार्थ एवं आवश्यक कार्यवाही हेतु प्रेषित।

क्षेत्रीय अधिकारी

क्षेत्रीय कार्यालय



उ० प्र० प्रदूषण नियंत्रण बोर्ड

आवास विकास कालोनी (तालपुरा योजना)

कानपुर रोड, झांसी।

सहमति आदेश पत्र

(लघु श्रेणी के उद्योगों हेतु सहमति)

संदर्भ संख्या—

4087/2013

दिनांक—

10-01-13

विषय—सहमति मेसर्स इरकान इन्टरनेशनल लि०, बडागाँव, उरई, जालौन वायु (प्रदूषण निवारण एवं नियंत्रण) अधिनियम, 1981 (यथा संशोधित) की धारा-21/22 के अन्तर्गत।

संदर्भ : आवेदन संख्या शून्य

दिनांक—17.12.2012

1. वायु अधिनियम 1981 के अन्तर्गत वायु प्रदूषणकारी अवयवों के उत्सर्जन हेतु उपरोक्त संदर्भित सहमति आवेदन पत्र मेसर्स इरकान इन्टरनेशनल लि०, बडागाँव, उरई, जालौन को अपने संयंत्रों से संलग्नक में वर्णित शर्तों के अनुरूप वायु मण्डल में उत्सर्जन हेतु बोर्ड द्वारा अधिकृत किया जाता है।
2. यह सहमति दिनांक 01.01.2013 से 31.12.2013 की अवधि तक विधि मान्य है।
3. इस सहमति आदेश में अंकित किसी सूचना तथा सहमति शर्तों के होते हुए भी उत्तर प्रदेश प्रदूषण नियंत्रण बोर्ड, वायु (प्रदूषण नियंत्रण एवं निवारण) अधिनियम 1981 धारा 21 (6) में तथा इसके संशोधित अधिनियम 1987 के अन्तर्गत उपरोक्त वर्णित किसी भी/सभी शर्तों पर पुनः विचार करने के लिए जो उचित हो, परिवर्तन करने का अधिकार व शक्ति बोर्ड के लिये आरक्षित है।
उत्तर प्रदेश प्रदूषण नियंत्रण बोर्ड हेतु अथवा अधिकृत।

क्षेत्रीय अधिकारी

संलग्नक : अनुलग्नक

(सहमति शर्तें)

उत्तर प्रदेश प्रदूषण नियंत्रण बोर्ड

झांसी

सलग्नक सहमति आदेश संख्या

सहमति (वायु) आदेश /

दिनांक-

सहमति शर्तें

1. पलू गैस प्रति घंटा अधिकतम उत्सर्जन मात्रा नीचे दिये गये चिमनियों द्वारा उत्सर्जित मात्रा से अधिक नहीं होना चाहिए।

सम्बद्ध चिमनी

- | | |
|-------|-----|
| (i) | --- |
| (ii) | --- |
| (iii) | --- |
| (iv) | --- |
| (v) | --- |

2. वायु मण्डल में विभिन्न चिमनियों द्वारा उत्सर्जित मात्रा निम्न मानकों के अनुरूप हो।

(i) सरस्पेन्डेड पार्टिकुलेट मैटर (एसओपीओएम0)	मिली ग्राम/नार्मल क्यूबिक मीटर
---	-----------------------------------

(ii) मेटल डस्ट (आयरन, जिंक, कापर आदि)	---
---------------------------------------	-----

(iii) हाइड्रोजन, सल्फर डाई आक्साइड	---
------------------------------------	-----

सल्फेट मिस्ट

(iv) सल्फर डाई आक्साइड	पीओसीओएम0
------------------------	-----------

(v) कार्बन मोनो आक्साइड	---
-------------------------	-----

(vi) हाइड्रोकार्बन	---
--------------------	-----

(vii) अमोनिया	---
---------------	-----

(viii) फ्लोरीन	---
----------------	-----


(ix) मरकैप्टेन	---
----------------	-----

(x)	---
-----	-----

3. समय-समय पर बोर्ड द्वारा निर्धारित अन्य परिचालकों की मात्रा भी मानकों के अनुरूप हों।

4. बोर्ड द्वारा अनुमोदित वायु प्रदूषण नियंत्रण एवं अनुश्रवण हेतु संयंत्रों का अधिस्थापन उद्योग के प्रस्तावित अथवा कार्यरत परिसर में ही हो।
5. बोर्ड के निर्देशों के अनुरूप ही उद्योग द्वारा कार्यरत प्रदूषण नियंत्रण संयंत्रों में संशोधन अथवा प्रतिस्थापना (यदि सक्षम एवं अनुरूप न पाये गये हो) किया जा सकता है।
6. बिन्दु 4, 5 एवं 7 इंगित नियंत्रण तथा अनुश्रवण संयंत्रों को कार्यरत स्थिति में इकाई में रखा जाए।
7. इकाई परिक्षेत्र में प्रत्येक आवश्यक स्थान पर चिमनी/स्टैक का प्राविधान बोर्ड मानकों के अनुसार किया जाए।
8. सहमति आदेश निर्गत किये जाने की दिनांक के एक माह के भीतर इकाई के समस्त स्टैक से हो रहें उत्सर्जन के अनुश्रवण किये जाने की सम्पूर्ण व्यवस्था की जायें।
उत्सर्जन का अनुश्रवण नियमित रूप से किया जाए एवं इसकी मासिक आख्या बोर्ड में जमा की जाये।
9. (अ) उपरोक्त संदर्भित सहमति शर्तों का सम्पूर्ण अनुपालन कार्यरत इकाई द्वारा सुनिश्चित किया जाए एवं इस सम्बंध में आवश्यक अनुपालन आख्या सहमति आदेश प्राप्ति के एक माह के भीतर प्रस्तुत किया जाए।
(ब) नवीन इकाई में उत्पादन तब तक न आरम्भ किया जाये जब तक सहमति आदेश की समस्त शर्तों का अनुपालन बोर्ड की संस्तुति के अनुसार न कर लिया जाए।
10. किसी दुर्घटना या किसी अपरिहार्य कारणों से वायु प्रदूषण अवयवों का उत्सर्जन वातावरण में निर्धारित मानकों संदर्भित धारा-29 से अधिक होता है या होने की सम्भावना हो तो बोर्ड और अन्य संस्थानों जो संदर्भित धारा 29 उत्तर प्रदेश वायु (प्रदूषण निवारण एवं नियंत्रण) धारा 1983 में वर्णित है, को सूचित करना चाहिए।
11. इकाई में कार्यरत किसी भी प्रदूषण नियंत्रण संयंत्र अथवा स्टैक में किसी प्रकार का कोई भी परिवर्तन बिना बोर्ड की पूर्व अनुमति के न किया जाये।
12. इकाई में रख रखाव इस प्रकार से सुनिश्चित किये जाये कि वायु प्रदूषणकारी तत्वों का उत्सर्जन, स्टैक के अतिरिक्त अन्य किसी बिन्दु से नहीं होना चाहिए।
13. इकाई द्वारा बोर्ड के कर्मचारियों, मान्यता प्राप्त संस्थानों द्वारा, चिमनी अथवा उक्त किसी अन्य "आउट लेट" से वायु उत्सर्जन का नमूना एकत्रित किये जाने के सम्बंध में समस्त आवश्यक सुविधाओं का प्राविधान किया जाए।

14. इकाई से आबादी, कृषिक उपज इत्यादि को कोई भी नुकसान होने की स्थिति में यह आवश्यक होगा कि इकाई में उत्पादन तुरन्त बंद किया जाये तथा हटाने की सूचना तत्काल बोर्ड को दी जाए।
15. आवेदनकर्ता/इकाई द्वारा इस सहमति आदेश में तथा भविष्य में दिये जाने वाले समस्त निर्देशों/आदेशों का अनुपालन कड़ाई से किया जाए। किसी भी समय प दिये गए आदेश/निर्देश अथवा इस सहमति आदेश शर्तों का अनुपालन संतोषजनक नहीं पाए जाने की स्थिति में आवेदनकर्ता/इकाई पर विधिक प्राविधानों के अन्तर्गत कार्यवाही की जायेगी।
16. उपरोक्त इंगित समस्त शर्तें अधिनियम की धारा 21 (6) के अन्तर्गत निरस्त न किये जाने तक वैध रहेगी।
17. आवेदनकर्ता द्वारा सहमति नवीनीकरण हेतु सहमति आवेदन पत्र तीन प्रतियों में जमा किया जाए। यह आवेदन पत्र पूर्व सहमति आदेश की वैधता समाप्त होने से 30 दिन अथवा नवीन प्रतिस्थापित धिमनी की कार्यान्वयन तिथि हो एवं प्रस्तावित नवीन उत्सर्जन की तिथि से 30 दिन पूर्व (जो ~~भी~~ पहले हो) जमा किया जाये।
18. बोर्ड के अधिकारियों के निरीक्षण के दौरान उद्योग द्वारा एक निरीक्षण पुरिफिका उपलब्ध करायी जाए।
19. आवेदक को निरीक्षणकर्ता/बोर्ड को अनुश्रवण एवं प्रदूषण नियंत्रण संयंत्रों के निर्माण अधिस्थापना अथवा संचालन तथा अन्य सभी सूचनायें जो वायु प्रदूषण नियंत्रण से सम्बन्धित हो, उपलब्ध करानी होगी।
20. इस सहमति आदेश की प्राप्ति के 30 दिन के अन्दर अपने उद्योग के डाइरेक्टर्स, पार्टनर्स, प्रोपराइटर्स का पता दूरभाष संख्या की एक लिस्ट उपलब्ध करानी होगी।
21. इस सहमति आदेश में अंकित किसी सूचना तथा सहमति शर्तों के होते दिये भी उत्तर प्रदेश प्रदूषण नियंत्रण बोर्ड वायु (प्रदूषण नियंत्रण एवं निवारण) अधिनियम 1981 की धारा 21 (6) में तथा इसके संशोधित अधिनियम 1987 के अन्तर्गत उपरोक्त वर्णित किसी भी/सभी शर्तों में पुनः विचार करने के लिए जो उचित हो, वह परिवर्तन करने का अधिकार व शक्ति बोर्ड के लिए आरक्षित है। उ0 प्र0 प्रदूषण नियंत्रण बोर्ड हेतु अथवा अधिकृत।


क्षेत्रीय अधिकारी

Annexure – 3

***Correspondences on Median
Plantation & other issues***



IRCON INTERNATIONAL LIMITED

इरकॉन इन्टरनेशनल लिमिटेड



सिविल, मेकैनिकल, इलक्ट्रिकल, कम्यूनिकेशन्स और टर्नकी कान्स्ट्रक्शंस
(भारत सरकार का उपक्रम)

PROJECT OFFICE : Post Box No. 2 Village : Baragaon
Near Reliance Petrol Pump, NH-25, Jhansi Road
Oral-285 001 (Jalaun) Uttar Pradesh

PROJECT : EAST-WEST CORRIDOR EW-II (UP-05)
Ph. : 05162-210282, 210393, 210054 Fax : 05162-256333
Fax : 05162-251013 E-mail: Irconoral@rediffmail.com

No. IRCON/1020/NHAI/UP-05/Renardet/21/456

April 16, 2012

The Resident Engineer,
W/s RENARDET S.A. INGENIEURS CONSEILS,
Opposite Jaiswal Hotel, Kalpi Road, Oral (U.P).

(Kind Attn: Engr. S.R. Holkar)

Sub.: Rehabilitation and Upgrading of NH-25 from Km. 170+000 to Km. 220+000 to four lane configuration in the State of Uttar Pradesh, Package No. EW-II (UP-05).
- Provision in contract for safety and environment pollution.

Ref.: (1) Your Letter No. RE/SRH/UP-5/CON/1019 dated 03.04.2012.
(2) PD's Letter No. NHAI/12012/3/2007/JHS-EW/10741 dated 20.03.2012.

Dear Sir,

In the above subjected matters and letter under reference, it is to inform you that, IRCON is complying with all the contracts requirement with respect to road traffic safety measures and environment pollution measures, and full filling the obligation mentioned at the "Scope of works" Clause 2C "other works general", sub para (c).

You are requested to kindly refer our letter Nos. (i) IRCON/1020/NHAI/UP-05/Renardet/21/137 dated 15.02.2012 (ii) IRCON/1020/NHAI/UP-05/Renardet/21/138 dated 15.02.2012 regarding road traffic safety measures in the project.

As mentioned by you at the 02nd paragraph of your letter under reference at Sl. No. "1", it is to inform you that, on 01st April, 2012 accident was not taken place at Pirauna Bridge location, this statement is misleading and incorrect, the fact is that, due to breakdown of axel of one trailer on the existing Pirauna Canal Bridge, there was some temporary disruption in traffic movement. The breakdown is nothing to do with maintenance of the road, as it was due to poor mechanical condition of trailer, however, we are also not aware of the stoppage of work by police on 03rd April, 2012 at Pirauna, our all works were continued throughout of the day.

Pohar

Contd... P/2

रजि. कार्यालय : सी - 4 डिस्ट्रिक्ट सेंटर, साकेत, नई दिल्ली - 110017
Regd. Office : C-4 District Centre Saket, New Delhi-110017
Tel.: + 91-011-29565666 FAX : 91-011-26522000-26854000
E-mail : Info@Irconnet.com



IRCON is regularly maintaining the road in spite of huge losses being incurred towards the maintenance of the road due to none handing over of the hindrances free land since inception of the project, however, due to poor crust thickness, over loaded vehicles and heavy volume of traffic, poor condition of trucks/ trailer resulting frequent breakdown moving vehicles cause inconvenience to others.

Please refer your letter No.RE/SRH/UP-5/CON/931 dated 23.08.2011 wherein it was instructed to execute special repair at Pirona Canal Bridge and special maintenance was carried out after your instruction, which is evident that, the road condition at Pirona Canal Bridge is not sustaining the over loaded traffic. Your allegation that, we are not maintaining the road is not correct and painful also that, after making our all efforts to keep smooth traffic movement, such type of remarks are incorrect.

You will also appreciate that, in addition to above; water tankers have also been deployed apart from regular sprinkling of water at the bridge location by deploying manpower with pumps and pipe is also being done.

Please also refer 03rd para of your letter and we reserve our comments on your remarks. The non completion of Pirauna Canal Bridge is a matter of record that, the late decision at this location regarding provision of pipe culverts etc. has delayed the completion of the work as a whole at this location in addition to other reasons which have been communicated in the past. It is a matter of records that, there is inordinate delay in handing over of the encumbrance from the site as per contract, resulting prolongation of project work, this unplanned actions for providing of land has created such undesirable situation at the cost of contractor.



Contd... P/3

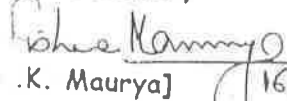
In spite of our best efforts to comply with the requirement of safety provisions, our legitimate expenditure has not been reimbursed against the BOQ items.

It is evident that, at all the time, the contractor has been suppressed regarding the payment against the work done, even though; we are fulfilling all criteria to execute the works as per contract provision.

We request you, if you kindly look into the matter of reimbursement of our huge outstanding dues amount with you, so that; our cash flow is improved for the smooth execution of balance work.


Thanking you and assuring you of our best services all times.

Yours faithfully


J. K. Maurya] 16/04/12
Project Manager

To: (1) Project Director, NHAI, Jhansi - For kind information please,


Mr. Badrinath,
For information &
N.A.

 18/4/12





IRCON INTERNATIONAL LIMITED

इरकॉन इंटरनेशनल लिमिटेड



सिविल, मैकेनिकल, इलेक्ट्रिकल, कम्प्यूनिक्शन्स और टर्नकी कान्ट्रैक्टर्स
(भारत सरकार का उपक्रम)

PROJECT OFFICE : Post Box No. 2 Village : Baragaon
Near Reliance Petrol Pump, NH-25, Jhansi Road
Orai-285 001 (Jalaun) Uttar Pradesh

PROJECT : EAST-WEST CORRIDOR EW-II (UP-05)
Ph. : 05162-210282, 210393, 210054 Fax : 05162-256333
Fax : 05162-251013 E-mail: irconoral@rediffmail.com

No. IRCON/1020/NHAI/UP-05/Renardet/21/447

April 16, 2012

M/s RENARDET S.A. INGENIEURS CONSEILS,
K. Colony, Near J.K. Hospital, Shivpuri Road,
Jhansi - 284 003 (U.P.),

Subject: Rehabilitation and Upgrading of NH-25 from Km. 170+000 to Km. 220+000 to four lane configuration in the State of Uttar Pradesh, Package No. EW-II (UP-05).
- Plantation of flowering plants and their maintenance.

Ref.: Your Letter No. ATL/AMM/UP-5/2012/423 dated 04.04.2012.

Dear Sir,

Please refer your letter under reference wherein you had instructed us to maintainance the plant, planted on median.

The median plantation was done in the year 2010 & partially in 2011, thereafter; regular maintenance was being carried out, but till date we have not been paid full amount of plantation and maintenance of the planted plants in the median.

It is to inform you that, during the recent thunder storm on 11.04.2012, lot of plants have been damaged due to high velocity of wind and rain.

You are requested to release full payment of work done as maintenance period of plant is nearly over.

Early action in this regard shall be highly appreciated.

Thanking you and assuring you of our best services all times.

Yours faithfully

K. Maurya

Project Manager

AFTER ACCOUNTING OF
LIVE TREES/PLANT YOU
WILL BE PAID.

18/04/12

- cc to: (1) Project Director, NHAI, Jhansi - For kind information please.
(2) Resident Engineer, M/s Renardet S.A., Orai - For kind information, please.

R. Badri Path,
for N.A.

रजि. कार्यालय : सी - 4 डिस्ट्रिक्ट सेन्टर, साकेत, नई दिल्ली - 110017

Regd. Office : C-4 District Centre Saket, New Delhi-110017

Tel.: + 91-011-29565666 FAX : 91-011-26522000-26854000

E-mail : info@irconnet.com

18/04/12





VENARDET S.A.
INGENIEURS CONSEILS

Supervision Consultancy Package – 03 for Construction Supervision of
National Highway Corridor Sector – 1 Project – ADB Funded Loan No 2029 – INDIA

ATL AEJUP-5\2011\ 383

29th June 2011

Eng. K. K. Maurya
Project Manager
IRC N INTERNATIONAL LIMITED
P.O. Box No.2, Km.203,
Village: Baragoan, Near Reliance Petrol pump,
Ranpur Rly. Crossing, NH-25, Jhansi Road,
City: Orai, Dist. Jalaun, State- U.P.

Sub: Rehabilitation and Upgrading of NH-25 from Km.170+000 to Km.220+000 to
four-lane configuration in the State of Uttar Pradesh, Package No EW-II (UP-5).
Non Compliance of Environmental Issues.

Ref: Semi Annual Environmental Status Report from Oct., 2010 to March., 2011

Gentlemen,

This has reference to Non-compliance of Environmental issues during the project implementation of Road works. Hence you are requested to take urgent action to complete the work on or before 30th April, 2012 (Recommended EOT)

Out of 101 nos of Borrow areas, 50 nos of Borrow areas have been partially redeveloped. The balance 51 nos. of borrow areas are still to be redeveloped and handed over to the Landowners. The above works are supposed to be implemented before completion of Civil works (30th April, 2012). Hence necessary action to be taken to complete the works once the monsoon ceases.

The median plantation works are incomplete. Re-plantation along with De-weeding / manuring shall be undertaken with immediate effect.

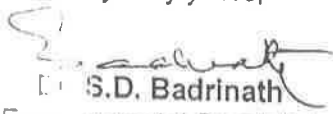
3. Turfing of Embankments is not satisfactory which requires rectification and planting of grass sods.

4. Necessary steps are to be taken to prevent soil erosion along the entire road stretches.

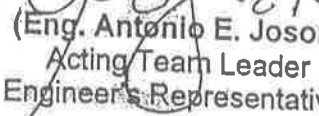
5. During the monsoon season, steps are to be taken for smooth water flow along the drains without altering the natural drainage.

You are requested to submit the "Environmental Action Taken Report" for the above Non-compliance issues.


Very truly yours,


S.D. Badrinath
Environmental Specialist

Very truly yours,
FOR THE CONSULTANT,


(Eng. Antonio E. Joson)
Acting Team Leader
Engineer's Representative

Copy to: 1. Er. J.K. Bansal, Project Director, NHAI, Jhansi
* 2. Resident Engineer Package UP-5


2/7/2011

INGENIEURS CONSEILS

Supervision Consultancy Package – 03 for Construction Supervision of
National Highway Corridor Sector – 1 Project – ADB Funded Loan No 2029 – INDIA

ATL AEJUP-4\2011\699

29th June, 2011

Eng. Subba Rao
Contractor's Representative
SUNWAY CONSTRUCTION SDN BHD
BH- 1/10, Veerangana Nagar,
Near Medical College, Package – UP-4
Jhansi

Subject: Rehabilitation and Up-grading of NH-25 from Km.104.000 to Km.170.000 to four-lane configuration in the States of Uttar Pradesh, Package no. EW-II (UP -4).
Contractor: SUNWAY CONSTRUCTION SDN BHD.
Non Compliance of Environmental Issues.

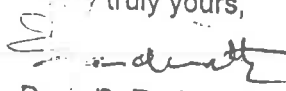
Ref: Semi Annual Environmental Status Report from Oct. 2010 to March, 2011.

Gentlemen,

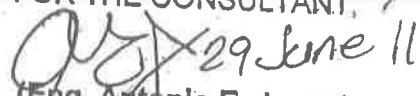
This is to bring to your kind notice, that the following environmental works are incomplete which need to be implemented on or before the Defect Liability Period (21.01.2012) as per the agreement conditions.

1. Re-development of Borrow Areas (Clause 111.2)
2. Satisfactory handing over certificates in stamp paper for the Redeveloped Borrow Areas from the Landowner with attached Photos (65 nos)
3. Quarry area re-development and handing over the same to the authorities letter has to be enclosed.
4. Completion of Median Plantation with new plants wherever the plants are perished. De-weeding, Manuring of the plants shall be carried out for the survival of the plants. The median plantation works are very poor with profuse growth of strong rooted weeds.
5. During monsoon season, water the bridges and flyover. Natural drainage should not be obstructed and ensure smooth flowing of Run-off water, without altering drainage.
6. Submission of final PPMS format for Jan, 2011.
7. Rectification of Turfing works on the Embankment.

Action taken report for the above Non – compliances shall be submitted Once in Two Weeks till the completion of Defect Liability Period.

Very truly yours,

Dr. D. Badrinath
Environmental Specialist

Concurred by,
FOR THE CONSULTANT,


(Eng. Antonio E. Joson)
Acting Team Leader
Engineer's Representative

cc: 1. Eng. J.K. Bansal, Project Director, NHAI, Jhansi.
2. Resident Engineer, UP-4

NARDET S.A.

INGENIEURS CONSEILS

Supervision Consultancy Package - 03 for Construction Supervision of
National Highway Corridor Sector - 1 Project - ADB Funded Loan No. 2029-INDIA

ATLAB.N.S.CONTRACTORS\2010\116

06th October 2010

Eng. J.P. Tiwari,

Eng. Subba Rao,

Eng. K.K. Maurya,

C.P.M., Oriental Structural Engineer Pvt. Ltd., Package -UP-3

Sr. Project Manager, Sunway Construction SDN BHD Package -UP-4

General Manager, IRCON International Limited, Package - UP-5

Sub: Consultancy Services for Construction Supervision for National Highway Sector-1 Project
East West Corridor - ADB Loan 2029-IND.

Median Plantation Continuous Maintenance req.

Gentlemen

It has been observed by Environmental Specialist of Supervision Consultant during his site visit that Median Plantation has not been maintained due to the evidence of low survival rate of the plants, profuse growth of weeds.

Hence, you are requested to undertake complete maintenance of Median Plants, including pruning, trimming, removal of weeds. As per the specification for Median Plantation, watering, manuring and replacement of casualty plants may be continued.

Action taken report on Median Plantation may please be sent at an early date.

Very truly yours

FOR THE CONSULTANT

(B.N. Srivastava)

Acting Team Leader
Engineer's Representative

- cc:
1. Eng. J.K. Bansal, Project Director, PIU, NHAI, Jhansi.
 2. Eng. B.N. Srivastava, Resident Engineer, UP-03 & UP-4
 3. Eng. S.R. Holkar, Resident Engineer, UP-05
 4. Mr. S.D. Badrinath, Environmental Specialist

10/10/10
B-10-201

Apay 9.10.10

09/10/10

08/10/10

ATTN: B.N.S.\CONTRACTORS\2010\118

06th October 2010

Mr. Subba Rao,

Sr. Project Manager, Sunway Construction SDN BHD Package -UP-4

Subject: Consultancy Services for Construction Supervision for National Highway Sector-1 Project
East West Corridor - ADB Loan 2029-IND.

Environmental Implementation of Redevelopment Borrow and Quarry areas.

Gentlemen


As per Environmental status of UP-4 Package, you are requested to accelerate the progress of work for the following:

- | | |
|---------------------------------|----|
| 1. Borrow area redevelopment | 55 |
| 2. Redevelopment of Quarry area | 2 |

The above works are to be completed as per the contract clause 111.2 with provision of inlet channel, Bunding and vegetation. The quarry area to be re-developed in consultation with the mine lease holder.


Necessary, certificates for the successful handing over the above sites along with photograph of the lease holder shall be sent at an early date.

Very truly yours
FOR THE CONSULTANT


(B.N. Srivastava)
Acting Team Leader
Engineer's Representative

1. Eng. J.K. Bansal, Project Director, PIU, NHAI, Jhansi.
2. Eng. B.N. Srivastava, Resident Engineer UP-4
3. Mr. S.D. Badrinath, Environmental Specialist

1 day 9.10.10


B.N. Srivastava



HERNARDET S.A.

INGENIEURS CONSEILS

Supervision Consultancy Package - 03 for Construction Supervision of
National Highway Corridor Sector - 1 Project - ADB Funded Loan No. 2029 - INDIA

CTC

ATL/SG/CONTRACTORS/2009/068

29th August 2009

Engr. Kahlon I. J. Singh, C.P.M., Oriental Structural Engineer Pvt. Ltd., Package -UP-3
Engr. Subba Rao, Sr. Project Manager, Sunway Construction SDN BHD Package -UP-4
Engr. K.K. Maurya, General Manager, IRCON International Limited, Package - UP-5

Subject: Consultancy Services for Construction Supervision for National Highway Sector-1 Project
East West Corridor - ADB Loan 2029-IND.

Horticulture and Landscape Work on National Highway

Reference: ATL/SG/Contractors/2009/064 dated 24th July 2009
NHAI/12037/2007/JHS/4456 dated 20th July 2009

Gentlemen,

Upon this writing no proposal was received by this office regarding the above subject.

To avail the remaining months of rainy season, it is suggested to start this work to all of the packages.

It is therefore requested to kindly submit your proposal in order for us to start the work as early as possible.

Your cooperation on this matter is hereby requested.

Regards,

Very truly yours

FOR THE CONSULTANT
Engr. Antonio E. Joson

Acting Team Leader
Engineer's Representative

Engr. As stated

- Cc:
1. Eng. Sanjay Arya, Project Director, NHAI, Jhansi
 2. Senior Resident Engineer
 3. Eng. B.N. Srivastava, Resident Engineer, UP-03
 4. Eng. S.B. Singh, Acting Resident Engineer, UP-04
 5. Eng. S.R. Holkar, Resident Engineer, UP-05

31/08/09

31/8/09

31-08-09

29 Aug. 09
31/08/09
29/08/09
31/8/09

Gonyi

BERNARDET S.A.

INGENIEURS CONSEILS

Supervision Consultancy Package - 03 for Construction Supervision of
National Highway Corridor Sector - 1 Project - ADB Funded Loan No. 2029 - INDIA

AT:SG/CONTRACTORS/2009/064

24th July, 2009

To

Engr. Kahlon I. J. Singh, C.P.M., Oriental Structural Engineer Pvt. Ltd., Package -UP-3

Engr. Subba Rao, Sr. Project Manager, Sunway Construction SDN BHD Package -UP-4

Engr. Raj Kumar, General Manager, IRCON International Limited, Package - UP-5

Subject: Consultancy Services for Construction Supervision for National Highway Sector-1
Project East West Corridor - ADB Loan 2029-IND.

Horticulture and Landscape work on National Highway.

Gentlemen,

Attached herewith is a copy of letters from NHAI PD Engr. Sanjay Arya and Horticulture
Manager with suggestive guidelines for day to day maintenance and plantation work
concerning the above mentioned subject.

You submit your proposal regarding this matter as requested by NHAI Project
Director.

Immediate action is hereby required.

Very truly yours,

FOR THE CONSULTANT
Engr. Silvio Gerardi

Acting Team Leader
Engineer's Representative

CC:

Engr. Sanjay Arya, Project Director, PIU, Jhansi

Engr. A.E. Joson, Sr. Resident Engineer

Engr. B.N. Srivastava, Resident Engineer - UP-03

Engr. S.B. Singh, Acting Resident Engineer - UP-04

Engr. S.R. Holkar, Resident Engineer - UP-05

Deputy
24/07/09

24/07/09

24/07/2009

24/07/09

24/07/09

भारतीय राष्ट्रीय राजमार्ग प्राधिकरण

(सड़क परिवहन और राजमार्ग मंत्रालय)

National Highways Authority of India

(Ministry of Road Transport & Highways)

Address: PIU Jhansi Office: House No: 610, Prabhavan Building, Behind Central Hotel, Satish Nagar, Civil Lines, Jhansi 284001

पता: प.का.इ. (प्रोसी) कार्यालय भवन संख्या-610, प्रभावन बिल्डिंग, सेंट्रल होटल के पीछे, सतीश नगर, सिविल लाइन्स जंसी - 284001

NHA/12037/1/2007/JHS/4456

Dated the 20th July, 2009.

To

The Team Leader,
M/s ICT Pvt. Ltd.,
Near New Galla Mandi,
Jhansi (U.P.).

The Team Leader,
M/s Artefact Projects Limited,
Near New Galla Mandi,
Jhansi (U.P.).

The Team Leader,
M/s Renardet S.A. Ingenieurs Conseils,
J. K. Colony, Shivpuri Road,
Jhansi (U.P.).

Signature
24/7/09

Sub : Horticulture and Landscape work on National Highways (Work Under BOT, BOT-MUT, MOT and EPC).

Ref : NHA, HQ, letter No. NHA/HORT/NH/24/2009 dated the 13th July, 2009.

Sir,

Strict compliance of the directions contained in the above referred letter (copy enclosed) is to be ensured. It is requested to issue necessary directions to the contractors concessionaires under your consultancy packages to take up the work of median plantation immediately. If it is not a BOQ item or not in the scope of the concessionaire, a variation proposal may please be submitted by the 27th July, 2009, so that, same can be considered. Separate proposal to comply the point number 4 of the said letter may also be submitted.

We needn't wait for approval of the variation proposal.

Yours faithfully,

Encl : Copy of above referred letter.

Signature
(Sanjay Arya)
Project Director

Copy for kind information to the :-

- (i) Chief General Manager (I) - HCA, NHA, HQ, New Delhi.
- (ii) Manager (Horticulture), NHA, HQ, New Delhi.

Copy for information and necessary action to the :-

- (i) Shri I. J.S. Kahlon, CPM, M/s QSE Pvt. Ltd. Jhansi.
- (ii) Shri Subba Rao, SPM, M/s Sunway Construction Sdn Bhd, Jhansi.
- (iii) Shri K. K. Maurya, PM, M/s IRCON International Limited, Orai.
- (iv) Shri S.K. Soni, TL, M/s Gayatri - Jhansi Roadways Limited, Jhansi.
- (v) Shri S.K. Soni, TL, M/s Gayatri - Lalitpur Roadways Limited, Jhansi.

Encl : Copy of above referred letter.

* SR RENG A. JOSHI
* RENG BH SRIVASTAVA
* ACT RENG SB SILIGH
RENG SR HOLKAR

Signature
22.07.09

RECEIVED
20 JUL 2009
AOT
RECEIVED



भारतीय राष्ट्रीय राजमार्ग प्राधिकरण

(पोत परिवहन, सड़क परिवहन और राजमार्ग मंत्रालय)

National Highways Authority of India

(Ministry of Shipping, Road Transport and Highways)

जी-5 एवं 6, सेक्टर-10, द्वारका, नई दिल्ली-110 075

G-5 & 6, Sector-10, Dwarka, New Delhi-110075

दूरभाष / Phone: 91-11-25074100-250741

फैक्स / Fax: 91-11-25093507 / 25093511

एक्स. / Extn.: 2223 / 2318 / 2460 / 2501

F.N.: NHAI/HORT/ NH/24/2009 / 7494

Date: 13/07/2009

To
All Project Director's
CMUs/PIUs/SPVs
National Highways Authority of India

Subject: Horticulture and Landscape work on National Highways (Work Under BOT, BOT- MUT, MOT and EPC).

Sir,

1. The Hon'ble Minister RT&H, Govt. of India during his address in NHAI on 07/07/2009, emphasized that the Horticulture and Landscape works on National Highways should come out excellently by the end of October 2009. In the light of this, the following action is proposed:
2. Expedite the plantation work at the median and maintenance of existing plants up to the optimum level as per the suggestive guidelines through existing concessionaire/ contractor, during this monsoon season and send the site photographs of plantation by the end of Sept. 09.
3. Plantations may be started in the median on completed carriageways, of under construction BOT Projects and EPC Projects during this monsoon season as per suggestive guidelines.
4. The separate proposal for development of horticulture and landscape work at Traffic rotaries, Interchanges, Road junction, Traffic Island, Approaches, under bridges and Toll Plazas or any other vacant part of ROW, if not covered under para (2) above.
5. This issue with the approval of Member 'A'

Yours faithfully,

Enclosed above

Copy to:

1. All NHAI HQ

(Dr. Akhilesh Kumar Dubey)
Manager (Horticulture)

Renanet S.A.

7 JUL 2009

Arati

RECEIVED

Suggestive guidelines for day to day maintenance and plantation work

S.No.	Item	Descriptions
01.	Watering	One tanker each of 4500-5000 liter capacity with proper safety light is required for a 10 Kms. stretch round trips of 10000 liter capacity for a 20 Kms stretch round trips (weekly programme).
02.	Training & Pruning	<p>To provide desired form and size to median plants, regular training and pruning by cutting and removing undesired part of twinges/over crowding and to make desired form, shape and size of plants and to prevent the glare of vehicle, the plant should be maintained branch from ground at 1.5 to 2 meter height with oval shape.</p> <p>Time of pruning: - Generally, two pruning is required in a year during dormant season i.e. December to January and May to June. Light pruning can be done anytime as required)</p> <p>Pruning tools: - Pruning knife, pruning saw, secateur and pruning shear etc.</p>
03.	Basin, Hoeing & Weeding	Making of basin of size 60 cm dia & 10-15cm deep, hoeing & weeding of plants, 1 times should be done every month per plant.
04.	Manureing / Feeding	Two feeding is require per year @ of 5 cum per 1200 plants (Sept, Oct & February, March).
05.	Digging of pits for gaps filling or new plantation	Digging of holes of size 60 cm dia and 60 cm deep and refilling the same with the excavated earth (Good earth) mixed with manure or sludge in the ratio of 2:1 (Two part of good earth and one part of manure). Flooding with water, dressing and removal of rubbish and surplus earth, if any.
06.	Planting	<p>The plants will be at spacing of 3x3 meters.</p> <p>One to two rows of flowering shrubs should be provided according to the varying width of the median in different sections. In median width of 1.5- 3 meters, one row of shrub whereas in 4.5-5 meter median width, plantation of two rows of flowering shrubs are proposed.</p> <p>Specification: Shrubs to be supplied in poly bags (growing in 25-30 cm poly bags / earthen pots, up to 2 year old, 3-4 branches and well-established free form diseases (To be planted in individual pits).</p> <p>Proposed plants: The shrub species proposed in the median are mainly Nerium oleander (Red Kaner), Thevetia peruviana (Yellow Kaner) and Bougainvilleas sps.</p>
07.	Deployment of Mail	1 mail for every 2km or 1200 shrubs



IRCON INTERNATIONAL LIMITED

इरकॉन इन्टरनेशनल लिमिटेड



सिविल, मैकेनिकल, इलक्ट्रिकल, कम्प्यूनिक्शन्स और टर्नकी कान्स्ट्रक्शन्स
(भारत सरकार का उपक्रम)

PROJECT OFFICE : Post Box No. 2 Village : Baragaon
Near Rellance Control Pump, NH-25, Jhansi Road
Orai-285 001 (Jhansi) Uttar Pradesh

PROJECT : EAST-WEST CORRIDOR EW-II (UP-05)
Ph. : 05162-210282, 210393, 210054 Fax : 05162-256333
Fax : 05162-251013 E-mail: irconorai@rediffmail.com

IRCON/1020/NHAI/UP-05/Renardet/21/447

April 16, 2012

RENARDET S.A. INGENIEURS CONSEILS,
Colony, Near J.K. Hospital, Shivpuri Road,
Jhansi - 284 003 (U.P.),

Subject: Rehabilitation and Upgrading of NH-25 from Km. 170+000 to Km. 220+000 to four lane configuration in the State of Uttar Pradesh, Package No. EW-II (UP-05).
- Plantation of flowering plants and their maintenance.

Reference: Your Letter No. ATL/AMM/UP-5/2012/423 dated 04.04.2012.

Dear Sir,

Please refer your letter under reference wherein you had instructed us to maintenance the plantation, planted on median.

The median plantation was done in the year 2010 & partially in 2011, thereafter; regular maintenance was being carried out, but till date we have not been paid full amount of plantation and maintenance of the planted plants in the median.

We are to inform you that, during the recent thunder storm on 11.04.2012, lot of plants have been damaged due to high velocity of wind and rain.

You are requested to release full payment of work done as maintenance period of plant is already over.

Early action in this regard shall be highly appreciated.

Thanking you and assuring you of our best services all times.

Yours faithfully

[Signature]
Maurya

Project Manager

AFTER ACCOUNTING OF
LIVE TREES/PLANT YOU
WILL BE PAID.

[Signature] 18/04/12

- (1) Project Director, NHAI, Jhansi - For kind information please.
- (2) Resident Engineer, M/s Renardet S.A., Orai - For kind information, please.

रजि. कार्यालय : सी - 4 डिस्ट्रिक्ट सेन्टर, साकेत, नई दिल्ली - 110017

Regd. Office : C-4 District Centre Saket, New Delhi-110017

Tel.: + 91-011-29565666 FAX : 91-011-26522000-26854000

E-mail : info@irconnet.com

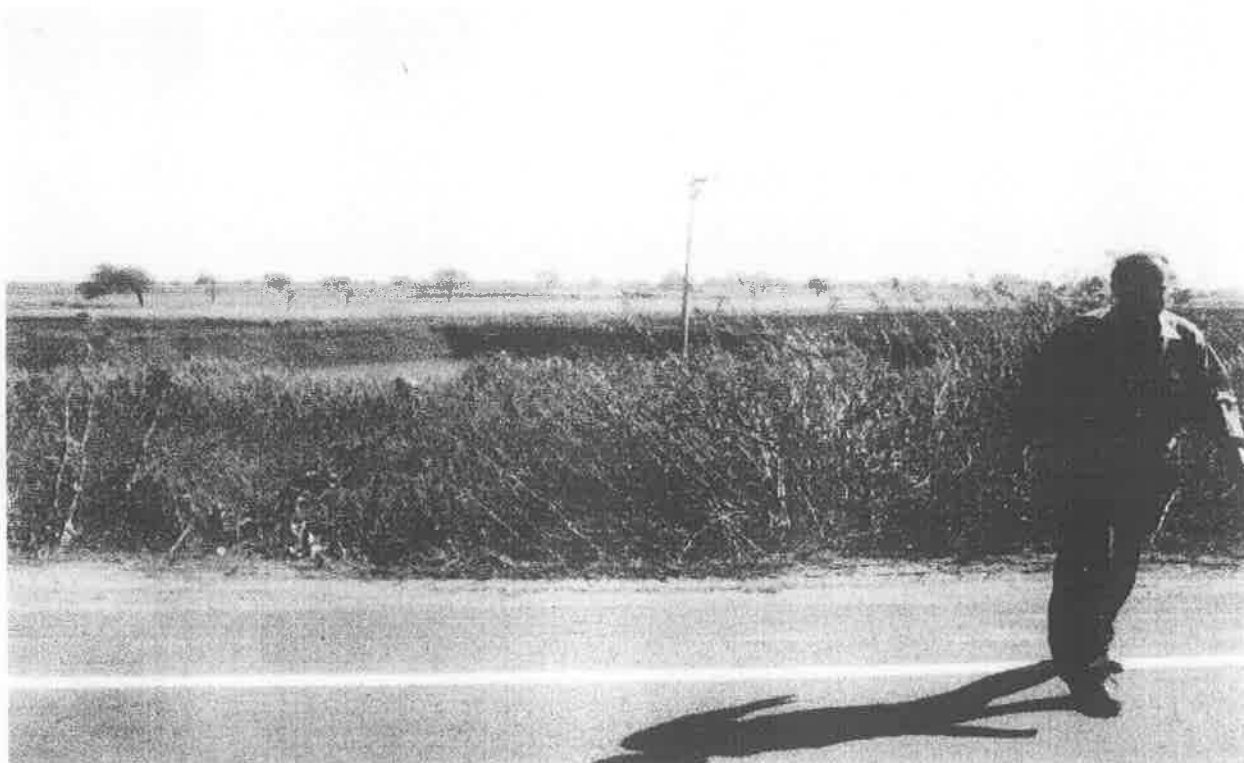


- Badrath,
N.A

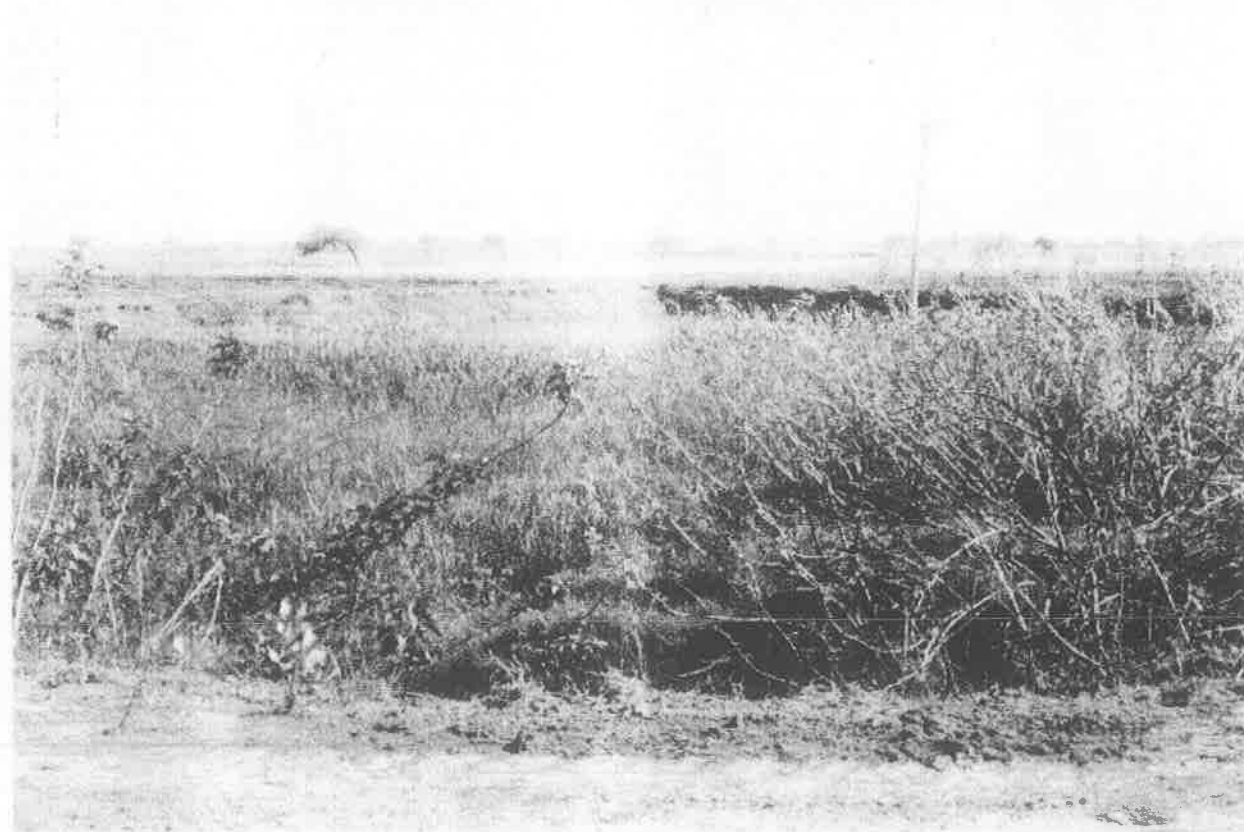
18/04/12

Annexure – 4

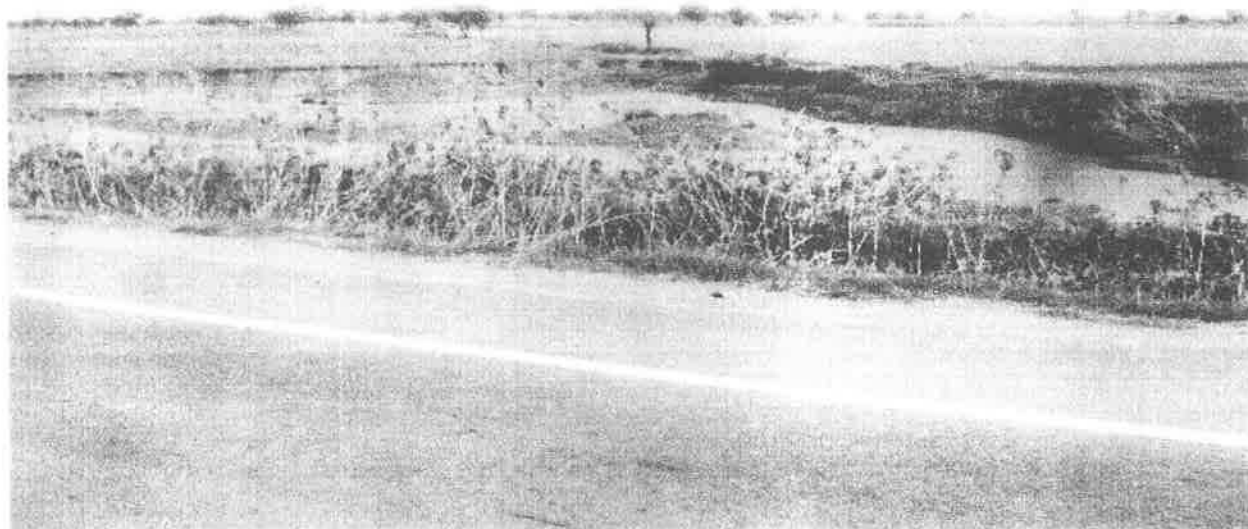
Selected Photographs



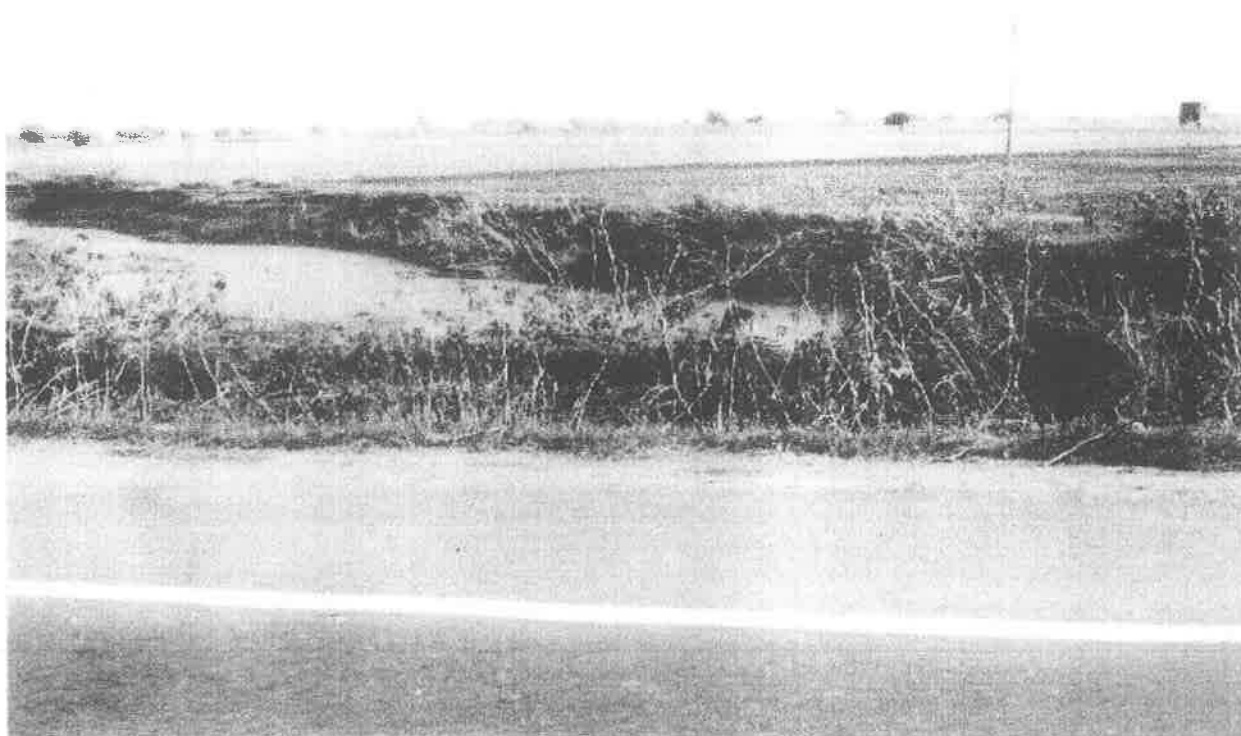
Ch. Km. 184+350 (RHS) – 45M center line



Ch. Km. 184+350 (RHS) – With shoulder



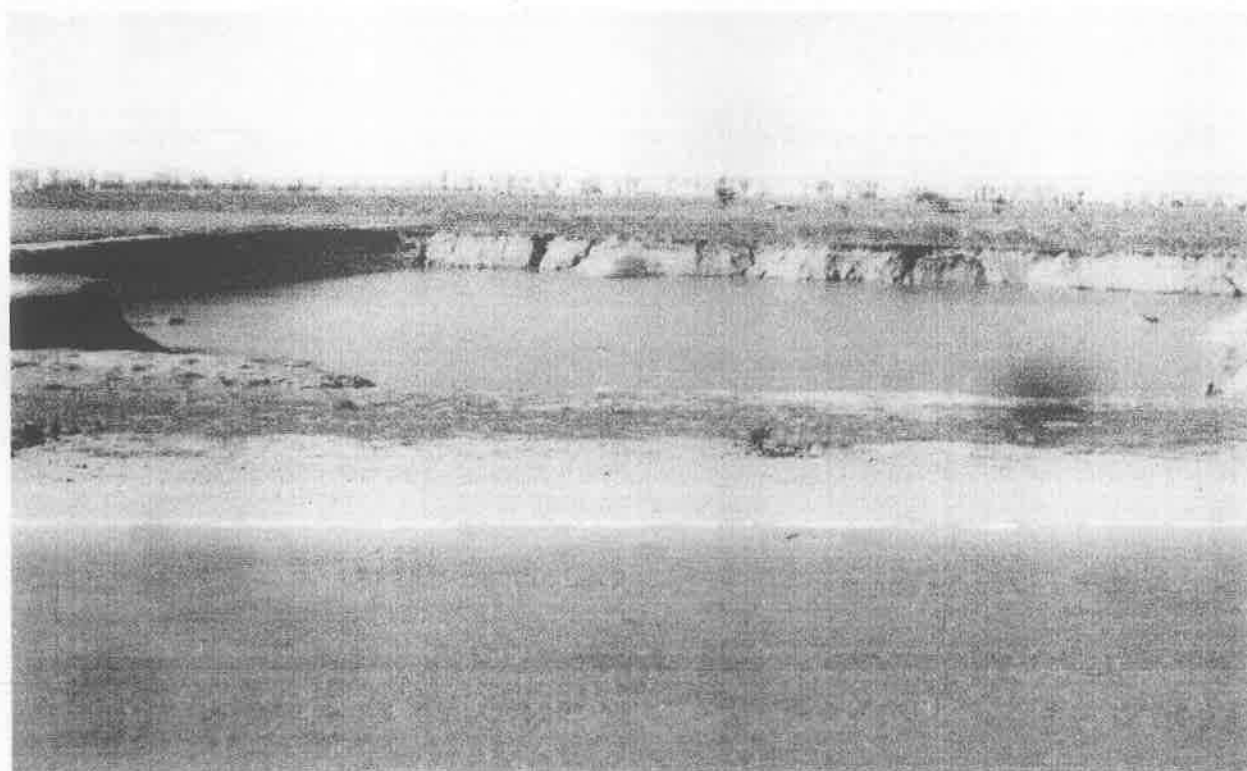
Ch. Km. 185+050 (RHS) – Not leveled



Ch. Km. 185+050 (RHS) – 25 M Centre line to be filled up (ROW)



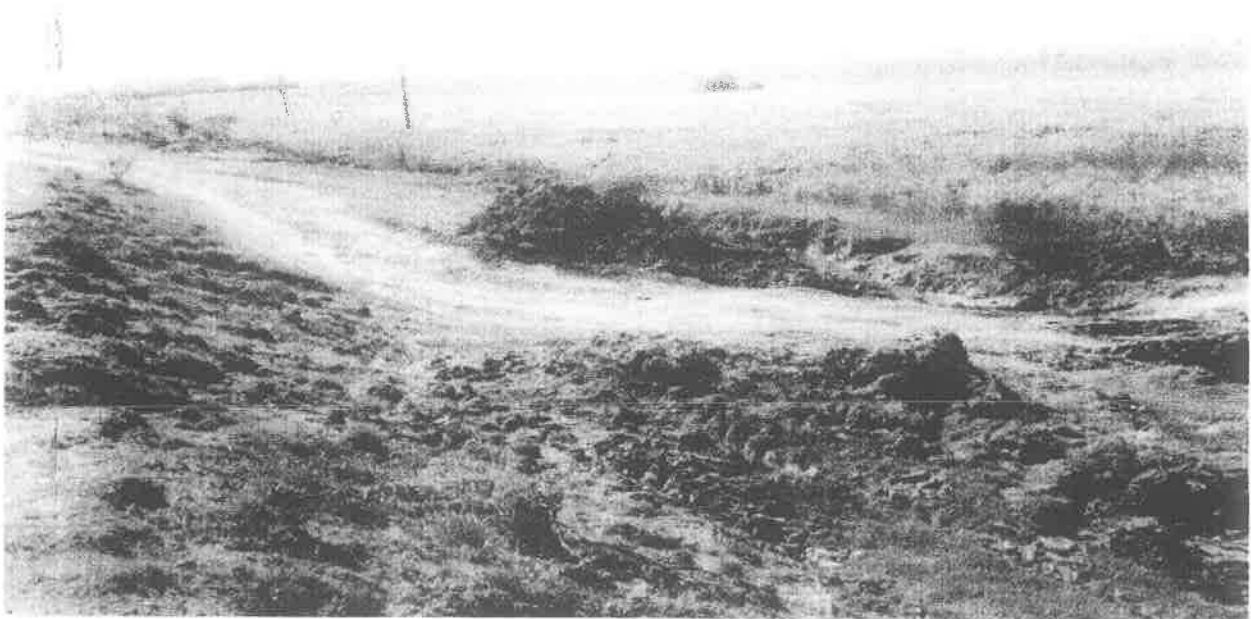
Ch. Km. 193+650 (LHS) – Along village road prone to accident



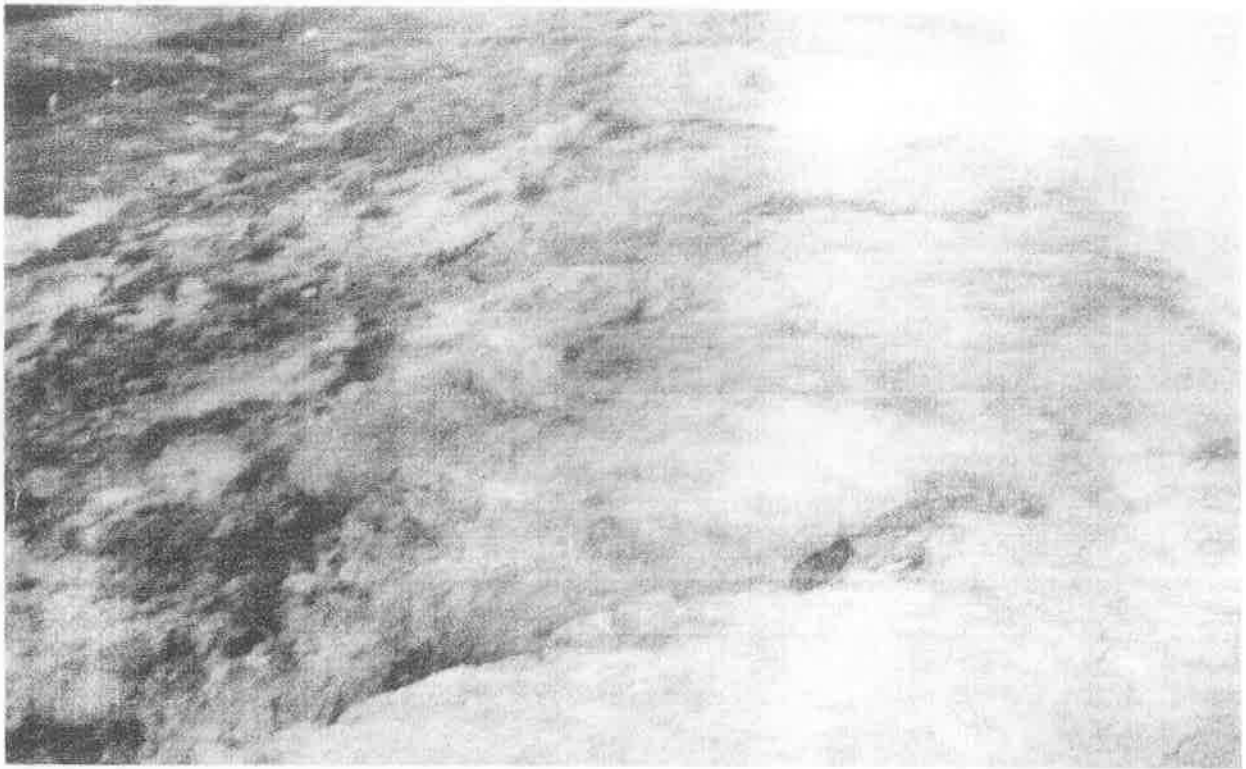
Ch. Km. 193+650 (LHS) – Gully erosion (near the toe)



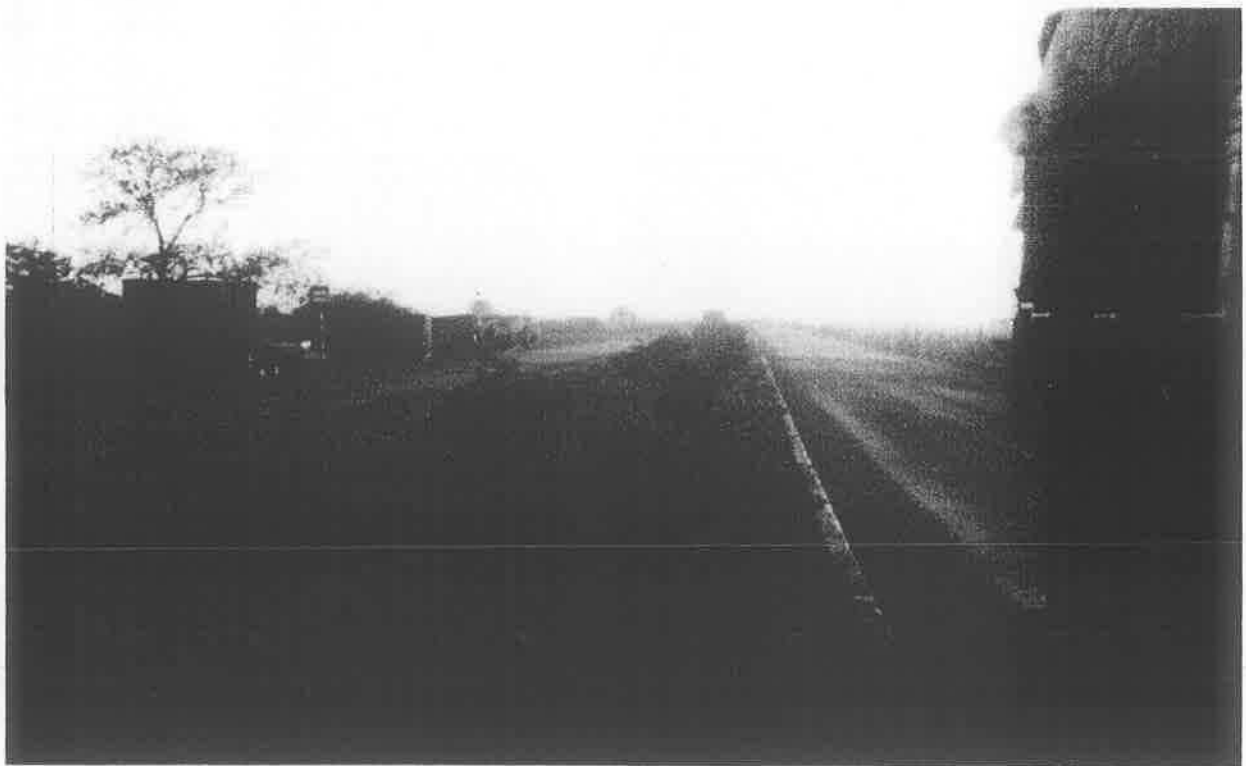
Ch. Km. 193+650 (LHS) – 30M Centre line ROW



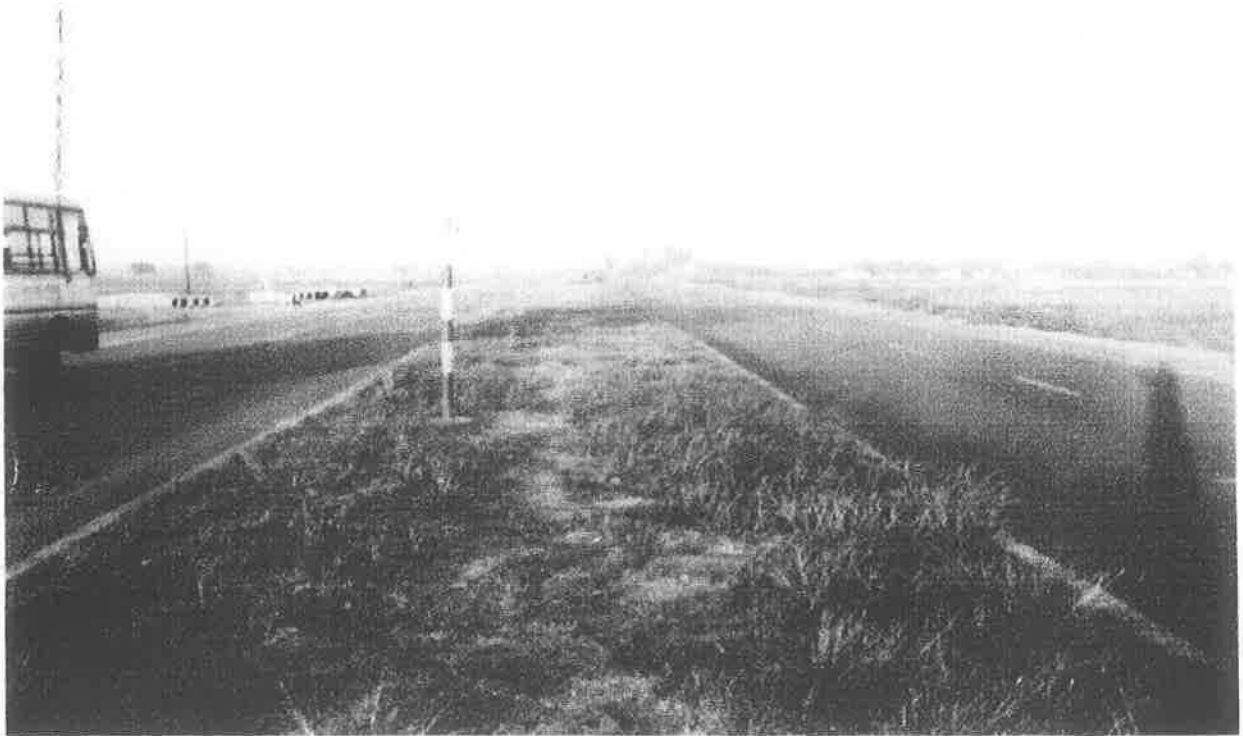
Shoulder soil erosion



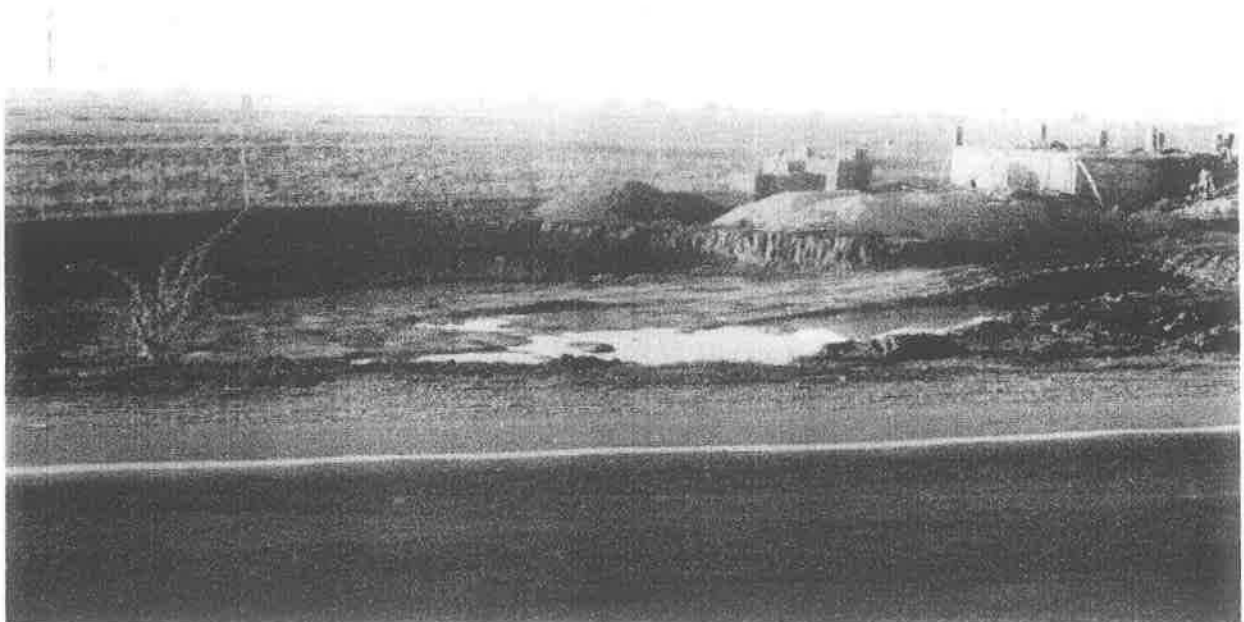
Shoulder – Gully erosion



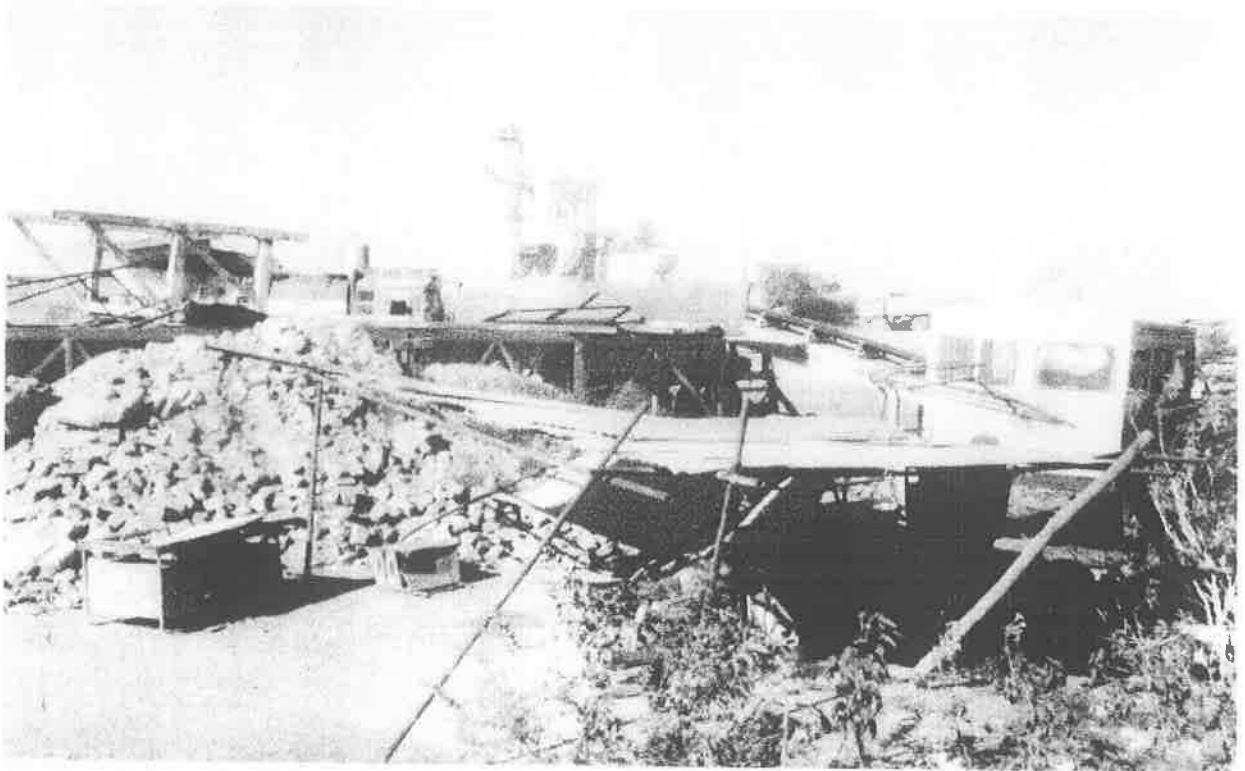
Missing median plantation



Barren median



Encroachment on NH



Camp Site



Camp Site