

Environmental Monitoring Report

Project Number: 41155-013
Loan Number: L2808 NEP/G0270 NEP/G0271 NEP
Semestral Report (July-December 2021)
January 2022

Nepal: Electricity Transmission Expansion and Supply Improvement Project

Prepared by Nepal Electricity Authority for the Asian Development Bank.

This environmental monitoring report is a document of the borrower. The views expressed herein do not necessarily represent those of ADB's Board of Directors, Management or staff, and may be preliminary in nature.

In preparing any country program or strategy, financing any project, or by making any designation or reference to a particular territory or geographical area in this document, the Asian Development Bank does not intend to make any judgement as to the legal or other status of any territory or area.

NOTES

- (i) The fiscal year (FY) of the Government of Nepal and its agencies ends on 16 July. FY before a calendar year denotes the year in which the fiscal year ends, e.g., FY 2021 ends on 16 July 2022.
- (ii) In this report, "\$" refers to US dollars.

CURRENCY EQUIVALENTS

31 December 2021

Currency unit – Nepalese Rupee (NRs)

NRs. 1.00 = \$ 0.0084

US \$ 1.00 = NRs. 118.99

ACRONYMS AND ABBREVIATIONS

ADB	Asian Development Bank
CF	Community Forest
CFUGs	Community Forest User Groups
CSR	Corporate Social Responsibility
CPP	Compensatory Plantation Plan
DFCC	District Forest Coordination Committee
DoFSC	Department of Forests and Soil Conservation
DFO	Division Forest Office
EM	Entitlement Matrix
ESMU	Environmental and Social Management Unit
ESSD	Environment and Social Studies Department
ETESIP	Electricity Transmission Expansion and Supply Improvement Project
GoN	Government of Nepal
GRC	Grievance Redress Committee
Ha	hectare
HH	Household
HPP	Hydro Power Project
IEE	Initial Environmental Examination
IP	Indigenous People
IR	Involuntary Resettlement
LF	Leasehold Forest
LRO	Land Revenue Office
NF	National Forest
NEA	Nepal Electricity Authority
PAF	Project Affected Family
PCC	Plain Cement Concrete
PTDEEP	Power Transmission and Distribution Efficiency Enhancement Project
RAP	Resettlement Action Plan
RCC	Reinforced Cement Concrete
RM	Rural Municipality
RP	Resettlement Plan
RoW	Right of Way
RRM	Random Rubble Masonry
SDFO	Sub-divisional Forest Office
SPS	Safeguard Policy Statement
SOP	Standard Operating Procedure
TKTLP	Tamakoshi-Kathmandu 220/400kV Transmission Line Project
TL	Transmission Line

TABLE OF CONTENTS

ACRONYMS AND ABBREVIATIONS.....	iii
TABLE OF CONTENTS.....	iv
1.0 INTRODUCTION.....	1
1.1 Background.....	1
1.2 Overall Progress Status of the Project.....	3
1.3 Implementation Status.....	5
1.4 Reporting Period.....	5
1.5 Monitoring Requirements and Frequency of Submission.....	5
2.0 COMPLIANCE STATUS WITH APPLICABLE STATUARY REQUIREMENTS.....	5
3.0 INSTITUTIONAL ARRANGEMENT.....	6
3.1 Establishment of Safeguard Unit.....	6
3.2 Establishment of Grievance Redress Mechanism.....	7
3.3 EMP Implementation, Monitoring and Reporting.....	8
4.0 COMPLIANCE WITH ENVIRONMENTAL SAFEGUARD MEASURES.....	8
4.1 Planning Status of the Project.....	8
4.2 Construction Approach.....	8
4.3 Tree Marking and Tree Cutting Status.....	8
4.4 Status of Compensatory Plantation Plan.....	11
4.5 Consultation with Community.....	11
4.6 Monitoring Visits and Discussion.....	14
4.7 Implementation of Mitigation Measures.....	14
4.7.1 Material Storage Yards and Workshop.....	14
4.7.2 Establishment of Labor Camps/Camp Site Management.....	15
4.7.3 Occupational Health and Safety Measures.....	16
4.7.4 Slope Stabilization and Bio-engineering Work.....	16
4.7.5 Air, Water and Noise Quality.....	17
4.7.6 Debris Management.....	18
4.7.7 Drainage Management.....	18
4.7.8 Firewood Use.....	18
4.7.9 Safety Gear.....	18
4.7.10 Livelihood Restoration and Enhancement.....	18
4.7.11 Environmental & Social Awareness and Trainings.....	19
4.7.12 Number of Grievances (Documented, resolved and under processing).....	19
4.7.13 Summary of Environmental Compliance Monitoring.....	21
5.0 SAFETY ASSURANCE AS PER THE CONTRACTOR'S SAFETY PLAN.....	26
6.0 IMPACT AND SAFETY MEASURES FOR COVID-19.....	26
7.0 ISSUES AND FOLLOW UP ACTIONS.....	28
8.0 ACHIEVEMENT ON MAJOR ITEMS OF FOCUS ON PREVIOUS REPORT.....	28
9.0 PROPOSED MAJOR ITEMS OF FOCUS FOR NEXT REPORT.....	29

LIST OF FIGURES

Figure-1: New Khimti - Barhabise TL section with administrative boundary.....	2
Figure-2: Barhabise -Lapsiphedi TL section with administrative boundary.....	2
Figure-3: Lapsiphedi -Changunarayan TL section with administrative boundary.....	3
Figure-4: Current Institutional Arrangement and Organogram.....	6
Figure-5: Total no. of GRCs to be formed and GRCs formed till this period.....	7
Figure-6: CFs in Charnawati Watershed affected by TKTL.....	10
Figure-7: District wise tree cutting status.....	11
Figure-8: Air Noise quality monitoring test results.....	17

LIST OF TABLES

Table-1: Overall Progress Status of the project.....	3
Table-2: List of team members for Safeguard Implementation.....	6
Table-3: Tower Details and Trees to be felled.....	9

Table-4: Forest types of TKTL	9
Table-5: Environment Related Public Consultation Details.....	12
Table-6: Status of Storage of Construction Materials at each site.....	15
Table-7: Employment Data Record.....	15
Table-8: List of Grievances and its Status.....	19
Table-9: Brief Summary of Status of Environmental Compliance Monitoring	21
Table-10: Compliance Status for Impacts and Safety Measures Adopted in COVID-19.....	27
Table-11: Major Issues and Follow up actions.....	28
Table-12: Achievement on Major Items of Focus on Previous Report.....	28
Table-13: Major Items of Focus for Next Report.....	29

ATTACHMENTS

Annex- 1: Regulatory Compliance Requirements.....	I
Annex- 2: Environmental Compliances Status with Loan and Grant Covenants.....	II
Annex- 3: Compliance Status in terms of General Conditions of Contract Clauses.....	IV
Annex- 4: Compliance Status in terms of Special Conditions of Contract Clauses.....	VIII
Annex- 5: Environmental Safeguard Planning Status.....	XI
Annex- 6: Compliance Monitoring Status of Safety Facilities available to Labors.....	XII
Annex- 7: Safety Assurance as per the Contractor's Plan.....	XIII
Annex- 8: Status of Environmental Compliance.....	XX
Annex- 9: Impact Mitigation Compliance on Environmental Issues.....	XXI
Annex- 10: Location wise Tree Cutting Status in Tower Footings of TKTLP.....	XXII
Annex- 11: Meeting minutes regarding Updated IEE and route alignment.....	XXIV
Annex- 12: Minute of meeting with Mayor of Manthali Municipality regarding IEE/UIEE.....	XXVI

PHOTOGRAPHS.....	XXVII
-------------------------	--------------

1.0 INTRODUCTION

1.1 Background

Electricity Transmission Expansion and Supply Improvement Project (ETESIP) was approved on 15 November 2011 with its loan closing date on 31 December 2017. However, due to certain changes/adjustments on the scope of Tamakoshi-Kathmandu Transmission Line (TKTL) and substation, the project has been extended till 31 March 2020 which has been further revised to 31 December, 2021. The ETESIP is a \$128 million project with financial assistance of 44% loan and 34% grant support from Asian Development Bank (ADB), Government of Norway, Nepal Electricity Authority (NEA) and Government of Nepal (GoN). The project also has an approved fund of \$2 million for capacity development assistance. The project comprises of following three major integrals:

- Transmission line expansion, including new transmission lines and substations
- Distribution system expansion
- Rehabilitation of hydropower stations

Based on these major integrals, the project has following components:

- a) Tamakoshi-Kathmandu 220/400kV TL
- b) Rehabilitation of 640kV Sundarijal HPP
- c) Rehabilitation of 1MW Tinau HPP
- d) Augmentation of distribution Services (East i.e. Jare, Gaur, Nijgadh, Chandraghadhi and Belbari)
- e) Augmentation of Distribution Services (West i.e. Parasi, Amuwa, Taulihawa, Krishnanagar, Gorkha, Mirm and Gaddachowki)
- f) Expansion of Chapali SS, Kohalpur-Mahendranagar 132kV second circuit
- g) Upgradation of distribution lines at Kathmandu, Bhaktapur, Kavrepalanchowk, Sindhupalchowk, Dolakha, Sindhuli and Ramechhap Districts.

Among above components, TKTL is rigorously under construction and result of monitoring has been described accordingly. The TKTL is divided into two sections: i) New Khimti-Barhabise section (Package I) which includes construction of 42.63 kms double circuit 220/400 kV TL from New Khimti, Ramechhap to Barhabise, Sindhupalchowk as shown in **Figure-1** and ii) Barhabise-Kathmandu section (Package II) which includes construction of three different TL a) construction of 46.4 kms double circuit 220/400 kV TL from Barhabise, Sindhupalchowk to Lapsipedi, Kathmandu, as shown in **Figure-2** b) construction of 9.953 kms double circuit 132 kV TL from Lapsipedi, Kathmandu to Changunarayan, Bhaktapur and c) construction of 4.098 kms multi circuit 132 kV TL from Changunarayan, Bhaktapur to Duwakot, Bhaktapur, as shown in **Figure-3**.

Some changes have been occurred in the ETESIP due to the shifting of three substations under Power Transmission and Distribution Efficiency Enhancement Project (PTDEEP) from ETESIP. The scope of acquisition, compensation and other associated activities of the mentioned three substation components have also been transferred under the PTDEEP. The shifted substations are: i) Barhabise SS, Sindhupalchowk, ii) Lapsipedi SS, Kathmandu and iii) Changunarayan SS, Bhaktapur.

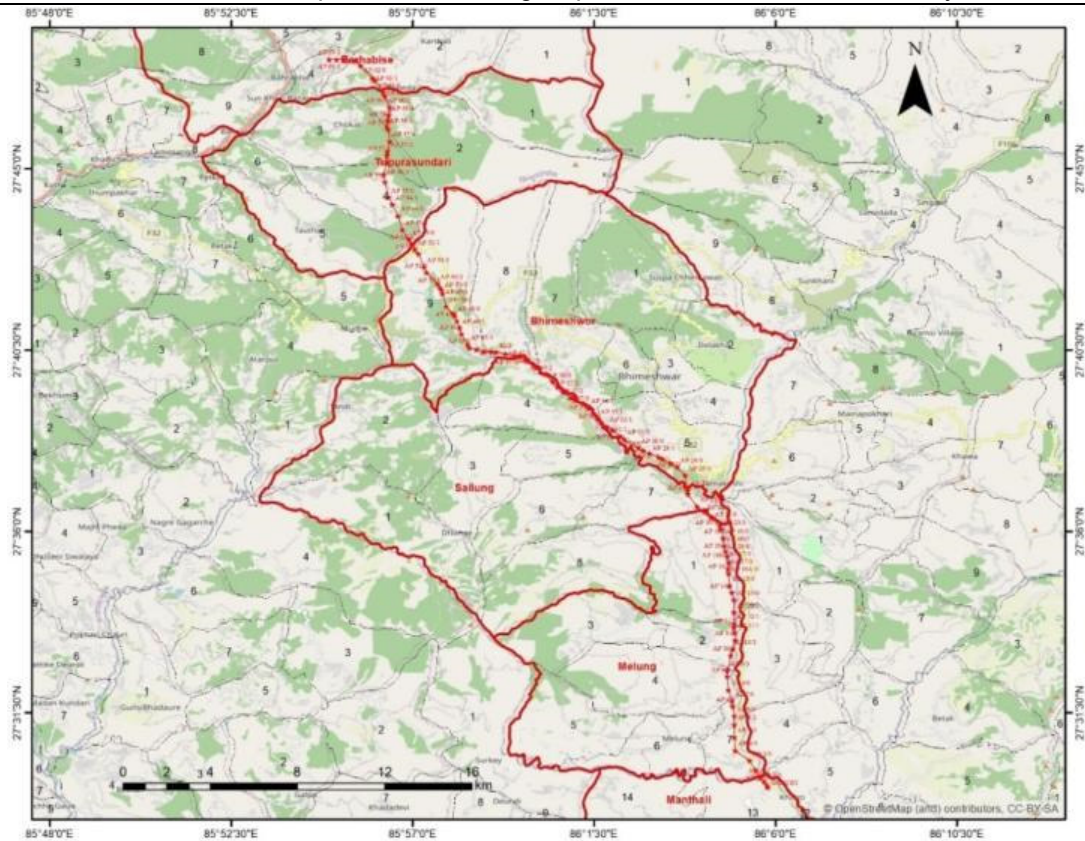


Figure-1: New Khimti - Barhabise TL section with administrative boundary

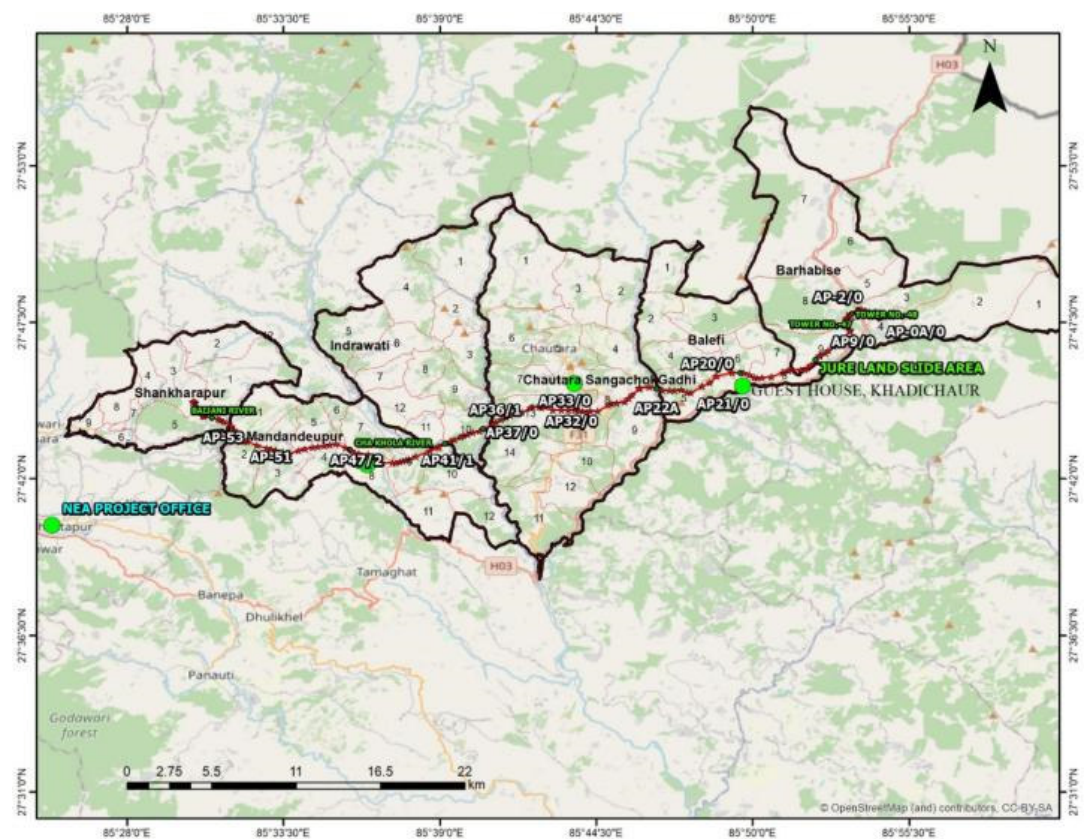


Figure-2: Barhabise -Lapsipedi TL section with administrative boundary

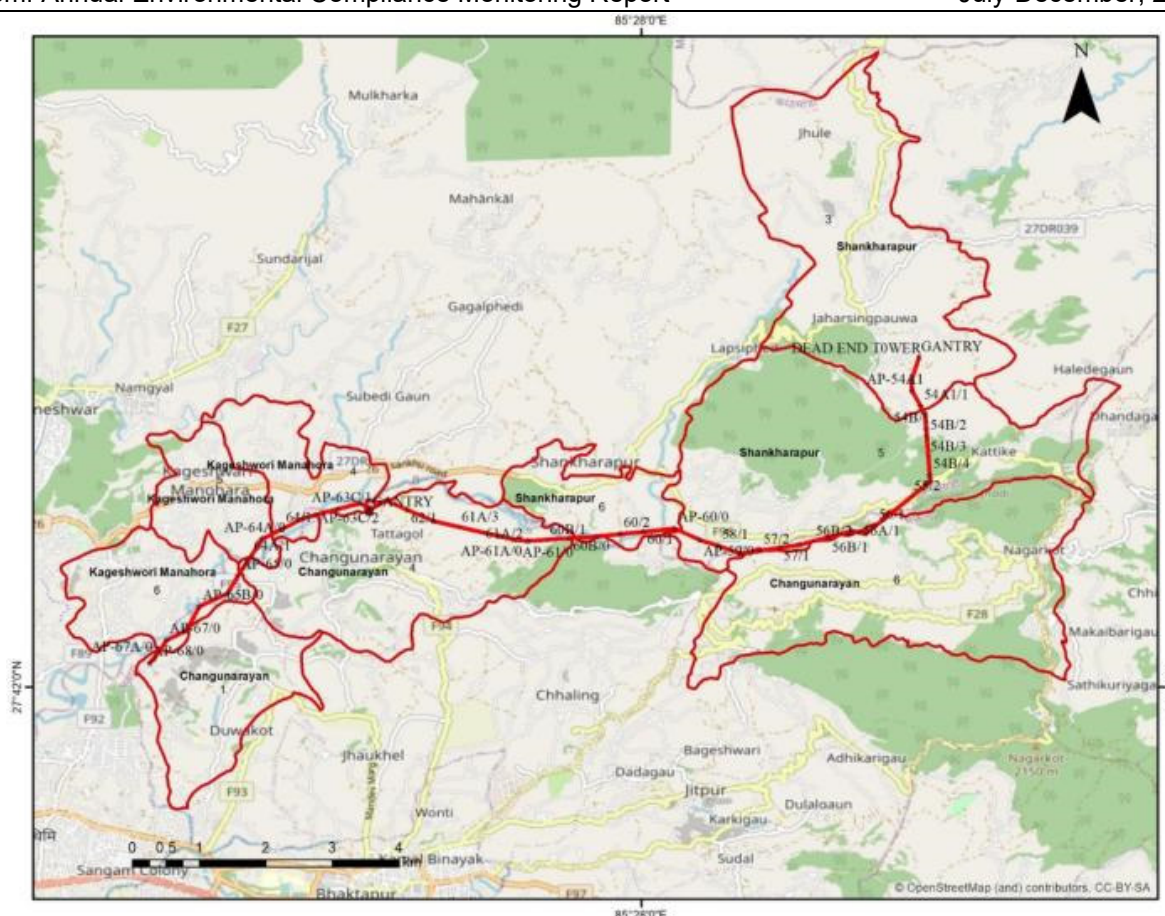


Figure-3: Lapsipedi -Changunarayan TL section with administrative boundary

1.2 Overall Progress Status of the Project

The overall progress status of sub-project components is summarized below in **Table-1**.

Table-1: Overall Progress Status of the Project

SN	Name of the Project	Project Details	Progress Status	Completion Schedule
Tamakoshi – Kathmandu 220/400 kV Transmission Line Project (TKTLP) – ETESIP				
a.	New Khimti - Barhabise TL section (Package I)	Construction of double circuit 220/400 kV TL from New Khimti, Ramechhap to Barhabise, Sindhupalchowk	<ul style="list-style-type: none"> i. Initial contract awarded on 26 September 2016 cancelled and recently the new contract agreement has been awarded on 20 May 2019 with the date effective from 20 July 2019 ii. Route Alignment finalized and check survey has been progressively undergoing <ul style="list-style-type: none"> i. Check survey completed for 115 tower locations. ii. Social and environmental public awareness campaign via installation of 30 hoarding boards at 30 different locations iii. A 35-day public notice for land acquisition has been published on October 13, 2020 on Gorkhapatra daily for Dolakha district. iv. Public notice for land acquisition for Sindhupalchowk section has been published in 24 June 2021. v. Divisional Forest Office, Dolakha has granted tree cutting approval for all the fifteen APs that falls on the eleven CFs (AP 10/1, AP 13/0, AP 16/1, AP 17/1, AP 18/0, AP 19/1, AP 21/0, AP 22/0, AP 24/1, AP 25/0, AP 26/0, AP 36/0, AP 37/0, AP 49/1 and AP 52/1) and tree cutting have been completed in all the fifteen APs. 	12 July 2022

SN	Name of the Project	Project Details	Progress Status	Completion Schedule
			vi. Sub-division Forest Office, Barhabise of Sindhupalchowk district has completed the hammer seal of trees and preparing the data for the CFs of Tripurasundari RM. vii. Handover of felled trees to respective CFs has been completed in Dolakha district. viii. NEA has paid NRs. 165,058,031 for the acquired forest land to Forest Development Fund. Divisional Forest Office, Dolakha has prepared cost estimate of compensatory plantation of NRs 27,025,773.84 ix. Foundation work completed in 51 locations and ongoing in 11 locations. x. Erection completed in 20 locations and ongoing in 3 locations. xi. Compensation Determination Committee of Dolakha has finalized the cost estimate for compensation of structure, crops and fruit trees of tower pad. xii. Conservation awareness raising program in two locations and Social Awareness Program in three locations of Dolakha district have been conducted to PAFs and stakeholders. xiii. 14 out of 15 GRCs have been formed in Ramechhap, Dolakha and Sindhupalchowk districts.	
b.	Barhabise – Lapsipedi section (Package II)	Construction of double circuit 220/400 kV TL from Barhabise, Sindhupalchowk to Lapsipedi, Kathmandu	iii. Contract awarded on 13 June 2017 with the date effective from 13 August 2017 iv. Check survey completed v. Social and environmental public awareness campaign via installation of 30 hoarding boards at 30 different locations vi. Enumeration of trees to be cut in Sindhupalchowk and Kavrepalanchowk has been completed and accordingly Tree cutting approval has been granted from the Cabinet and hence the agreement has been done between Department of Forests and Soil Conservation (DoFSC) and NEA; based on which the letter has been sent to the respective DFO. vii. After the recipient of tree cutting approval letter from DoFSC, the tree cutting has been completed for tower pads (expect AP 47/3) and the process of preparing tree cutting approval letter from respective DFO for ROW is in process viii. An agreement has been done between Department of Forest and Soil Conservation and Nepal Electricity Authority to provide funds for compensatory tree plantation for all the trees to be felled in TKTL ix. Occupational Safety Training- 3 and Health and Sanitation Program- 3 has been conducted among labors (Participants- 22 in each) x. Social Awareness program conducted in 3 different locations xi. GRC formation in Sindhupalchowk (11 out of 11), Kavrepalanchowk (10 out of 10) and Kathmandu (0 out of 1) completed xii. Final field re-verification remaining (4 locations) xiii. Tower foundation construction under progress (103 foundation completed & 4 under construction)	Initially, 13 April 2020, which has been further renewed to 31 March 2022

SN	Name of the Project	Project Details	Progress Status	Completion Schedule
			xiv. Tower erection under progress (82 erection completed & 2 under construction) xv. Tower protection work under progress (16 completed and 1 under progress) xvi. Stringing in progress (AP 26/1 – AP 27/0, completed; AP 25/3 – AP 26/0 – AP 26/1, AP 27/0 – AP 27/1, under progress)	
c.	Lapsipedi – Changunarayan section (Package II)	Construction of double circuit 132 kV TL from Lapsipedi, Kathmandu to Changunarayan, Bhaktapur Construction of multi circuit 132 kV TL from Changunarayan, Bhaktapur to Duwakot, Bhaktapur (LILO)	i. Contract awarded to L&T, that has been included as a complete package within Package II ii. Detailed survey has been completed for 14.13 km (57 towers) iii. Check survey completed for 57 towers iv. Contouring completed v. Final cadastral report submitted for publication of land acquisition notice (22 locations- 39%) vi. Final verified cadastral report to be obtained from Naapi (5 locations- 8%) vii. Final re-verification to be done in field (30 locations- 52%) viii. Enumeration of trees to be cut in Kathmandu and Bhaktapur Districts has been completed and accordingly Tree cutting approval has been granted from the Cabinet and hence the agreement has been done between DoFSC and NEA; based on which the letter has been sent to the respective DFO. xvii. GRC formation in Kathmandu (1 out of 5) and Bhaktapur (0 out of 3) completed	

(Source: Field visit, compensation disbursement data sheet, project document and consultation with project staffs)

1.3 Implementation Status

NEA has established a separate Project Management Directorate (PMD) to expedite decision making process for the timely implementation of all ADB funded projects and other subsequent projects. PMD is headed by Deputy Managing Director (DMD) responsible for preparation, procurement, construction and supervision of ADB funded projects.

1.4 Reporting Period

The Semi-annual Environmental Compliance Monitoring Report is prepared for the period of July–December, 2021.

1.5 Monitoring Requirements and Frequency of Submission

The Semi-annual Environmental Compliance Monitoring Report has been prepared by NEA and submitted to ADB as per the reporting guidelines and compliance with ADB requirements. The report has been prepared to cover and evaluate the environmental activities conducted by Environment and Social Management Unit (ESMU) in TKTL for the period of July–December, 2021.

2.0 COMPLIANCE STATUS WITH APPLICABLE STATUTORY REQUIREMENTS

The environmental safeguard related regulatory compliance requirements are as given in **Annex-1**. Similarly, environmental compliance status with loan and grant covenants are presented in **Annex-2**, whereas the health & safety and environmental safeguard related project activities are in compliance with contract clauses as given in **Annex-3** and **Annex-4** respectively.

3.0 INSTITUTIONAL ARRANGEMENT

3.1 Establishment of Safeguard Unit

NEA is the main executing agency of this project. However, there are multiple layers directly involved in the implementation of the project: i) NEA as the project proponent, ii) Project Management Directorate (PMD) responsible for managing ADB projects, iii) Project office responsible for implementation of the project iv) Environment and Social Studies Department (ESSD) responsible for monitoring, supervision and implementation of safeguard compliances v) Environment and Social Monitoring Unit (ESMU) responsible for field based monitoring,

supervision and implementation of safeguard compliances. The current institutional arrangement and organogram is described below in the **Figure-4**:

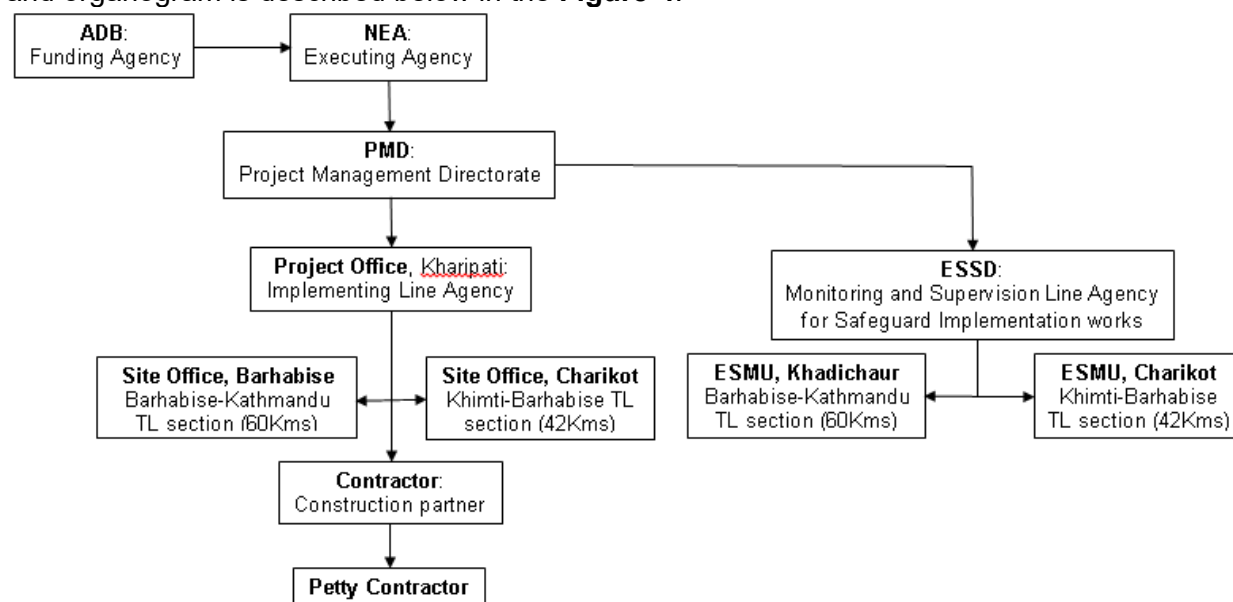


Figure-4: Current Institutional Arrangement and Organogram

The site office for ESMU has been established at Charikot, Dolakha for New Khimti-Barhabise TL section (Package I) and at Khadichaur, Sindhupalchowk for Barhabise – Changunarayan TL section (Package II). Since the establishment of the site office, the Environmental and Social Monitoring teams are in site for regular monitoring, supervision and implementation of Environmental and Social safeguard activities. The team consists of following team members listed in **Table-2**.

Table- 2: List of team members for Safeguard Implementation and Monitoring

SN	Team Members	Designation
1.	Mr. Raman Raj Sharma	Project Manager, TKTL, NEA
2.	Mr. Bhakti Timsina	Assist. Director-ESSD, NEA, TKTL-Coordinator
Package I (New Khimti – Barhabise 220/400 kV TL)		
1.	Mr. Gajendra Narayan Yadav	Focal Person, Civil Engineer
2.	Mr. Navaraj Sanjel	Focal Person
3.	Mr. Saroj Shrestha	Environmental Safeguard Officer
4.	Mr. Santosh Kaphle	Social Safeguard Officer
5.	Mr. Amit Poonia	Project Manager, KEC International (Construction Contractor)
Package II (Barhabise – Lapsipedi 220/400 kV TL; Lapsipedi – Changunarayan 132 kV TL; Changunarayan – Duwakot 132 kV (LILO) TL)		
1.	Mr. Shiva Ram Dhimal	Focal Person, Electrical Engineer
2.	Mr. Rajendra Prasad Joshi	Focal Person, Electrical Engineer
3.	Mr. Mahendra Bhattarai	Environmental Safeguard Officer
4.	Mr. Pradeep Kumar Adhikari	Social Safeguard Officer
5.	Mr. Subash Chander Sharma	Project Manager, L&T International (Construction Contractor)

3.2 Establishment of Grievance Redress Mechanism

There is a Grievance Management Department (GMD) headed by director within NEA. The preparation of grievance redress mechanism acceptable to ADB will be complied. Moreover, under the PMD a separate department to overlook the safeguard implementation is being formed. Besides, the issues raised in local consultative meetings are first handled and solved in the field level Grievance Redress Committee (GRC) chaired by local elected representative and other representatives from project personnel, PAFs, contractor, ESMU. The issues not solved will then

be forwarded to project level GRC, chaired by Project Manager and representatives from project personnel, ESMU. Again if the issues could not be solved there, then it will be forwarded to GMD. The establishment of GRC for all the affected RMs' and Municipalities' ward s is in the process of formation. Altogether 45 GRCs are supposed to be formed in complete TKTL as per the available approved cadastral data till this reporting period. Among those, 15 GRCs are to be formed in New Khimti – Barhabise TL section, 22 in Barhabise – Lapsipedi TL section and 8 in Lapsipedi – Changunarayan - Duwakot TL section till this reporting period, which are subjected to change as the final re-verification survey and approval of cadastral report are still under process. In New Khimti-Barhabise TL section, 14 GRCs (93%) have been formed. Out of 22 GRCs to be formed in Barhabise-Lapsipedi TL section 21 GRCs (95%) has been formed, similarly, 1 out of 8 (12%) GRC has been formed in Lapsipedi-Changunarayan-Duwakot TL section. In Sindhupalchowk district, 5 GRCs are to be formed for New Khimti-Barhabise TL section and 11 GRCs for Barhabise-Lapsipedi TL section. The GRC formation is being done following SOP for COVID-19 issued by PMD. The details of GRC formation status have shown in **Figure-5**.

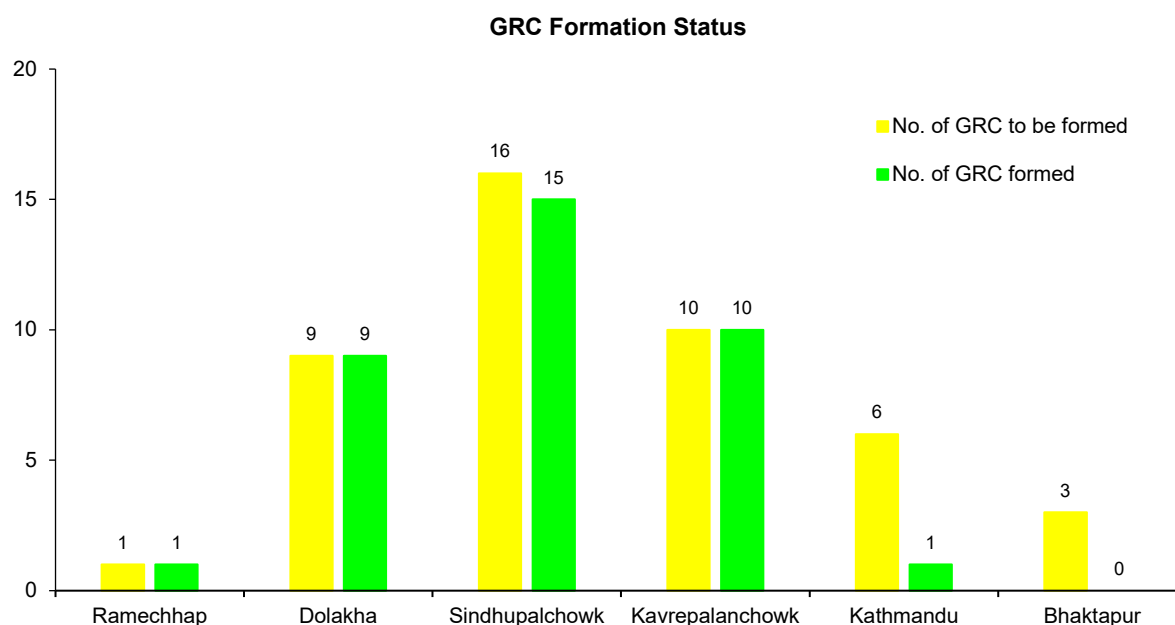


Figure 5 Total no. of GRCs to be formed and GRCs formed till this period

(Source: Field Data)

3.3 EMP Implementation, Monitoring and Reporting

Monitoring mechanism in each project has been established for regular compliance monitoring. Report will be prepared on monthly, quarterly and biannual basis. During monitoring and consultation, meetings will be conducted with the contractors and contractor's supervisor and also with the labors/staffs employed in construction works; through informal meetings in a group and individually. The consultative process aimed to obtain required information feedback and advice from the participants i.e., Contactors and labors/staffs engaged for the civil construction to assess the actual scenario of the labor issues and concerns.

4.0 COMPLIANCE WITH ENVIRONMENTAL SAFEGUARD MEASURES

The environmental assessment with mitigation, corrective and compensatory measures for the proposed development interventions is a major component in ensuring minimal adverse environmental impacts. According to Environmental Protection Act (EPA), 2019 and Environmental Protection Rules (EPR), 2020 of GoN and ADB Safeguard Policy Statement (SPS), 2009 Initial Environmental Examination (IEE) is mandatory for the electricity transmission line projects. However, if the transmission line passes from protected areas (National Park, Wildlife reserves, Conservation areas), Environmental Impact Assessment (EIA) is mandatory

according to schedule 3 of EPR, 2020. With the promulgation of EPA, 2019 and EPR, 2020, EPA, 1996 and EPR, 1997 has been dissolved; however the IEE of the project was prepared as per then EPR, 1997. Moreover, considering National Energy Crisis Alleviation and Electricity Development Decade concept note, Ministry of Energy, Water Resources and Irrigation has issued "IEE and EIA Working Procedures for Hydropower and Transmission Line Project, 2073 BS" effective from 2073 Kartik 4 (20 October, 2016) to simplify and expedite environmental assessment approval process by assigning authority to Department of Electricity Development (DoED).

4.1 Planning Status of the Project

The transmission line projects are screened to be of Category B. The IEE of Tamakoshi-Kathmandu 220/400kV TL has been approved from ADB and GoN through the line ministry. The TL will avoid any environmentally sensitive sites. A section approximately 16 km passes through forest areas of Charnawati Watershed (The watershed area set aside for carbon sequestration pilot site) although not a legally protected area the offsetting of the Right of Way (RoW) clearance has been proposed. The work for the transmission line is in progress where contractors have been mobilized and ESMU being established. The details of the project planning are provided in **Annex-5**.

4.2 Construction Approach

The construction approach will be applied with focus on reducing adverse environmental impacts, costs and promoting local jobs. The preventive and corrective measures on handling hazardous chemicals, oils, occupational health and safety requirements are incorporated as per the safeguard requirements.

4.3 Tree Marking and Tree Cutting Status

The enumeration of trees to be cut has been completed in Ramechhap, Dolakha, Sindhupalchowk, Kavrepalanchowk, Kathmandu and Bhaktapur districts. The then obtained enumeration list has been submitted to the respective agency i.e., Department of Forest. The enumeration list shows more trees to be cut than expected from the IEE report and thus IEE has been updated and approved on October 2019, in the portion of Sindhupalchowk Forest area, especially in Balephi RM. The total number of trees to be cut is counted as 35,231 with the total timber volume of about 441,674.527 cft. The details are presented in **Table-3** and **Table-4**. The tree cutting approval has been approved/decided from the cabinet meeting and the authorized letter from the concerned agency/authority (DoFSC) has been dispatched. The request letter for approval of tree cutting submitted to Division Forest Office, Dolakha, Kavrepalanchowk and Sindhupalchowk by Project Office has been registered and the concerned agency has further granted the permission for tree cutting via respective Sub-division Forest Office in the respective districts.

Table-3: Tower Details and Trees to be felled

SN	TL section	Length	Districts	Total No. of approved towers			Number of trees to be felled	Remarks
				Towers in Government land/Forest area	Towers in Private land	Total Towers		
1.	New Khimti – Barhabise (220/400 kV)	42 km	Ramechhap	28	87	115	0	However, the tree cutting will be avoided in valleys and the trees with smaller heights that maintain conductor clearance.
			Dolakha				4291	
			Sindhupalchowk				28582	
2.	Barhabise - Lapsiphedi (220/400 kV)	46 km	Sindhupalchowk	25	97	122	1424	
			Kavrepalanchowk				838	
			Kathmandu				93	
	Lapsiphedi - Changunarayan (132 kV)	14 km	Kathmandu	7	50	57	93	
			Bhaktapur				93	
Total		102 km	6	47	246	293	35231	

(Source: Project document, Updated IEE report)

Table 4: Forest types in TKTL

SN	District	Affected CF		Affected GF		Affected LHF		Total	
		No.	Area (ha)	No.	Area (ha)	No.	Area (ha)	No.	Area (ha)
1	Dolakha	17	35.34	0	0	0	0	17	35.34
2	Sindhupalchowk	27	53.6912	2	0.7678	2	1.9412	31	56.4002
3	Kavrepalanchowk	6	9.200	-	-	-	-	6	9.2
4	Kathmandu	2	2.0300	-	-	-	-	2	2.03
5	Bhaktapur	1	0.2500	-	-	-	-	1	0.25
Total	5	53	100.5112	2	0.7678	2	1.9412	57	103.2202

(Source: Updated IEE report)

New Khimti-Barhabise TL Section

The DFO, Dolakha has granted tree cutting approval in eleven community forests. With this approval from DFO, tree cutting in AP 10/1, AP 12/2, AP 16/1, AP 17/1, AP 18/0, AP 19/1, AP 21/0, AP 22/0, AP 24/1, AP 25/0, AP 26/0, AP 36/0 and AP 37/0 has been completed in presence of respective Sub-division Forest official and CFUG members. There are no trees in tower pads of AP 49/1 and AP 52/1, and thus only the shrubs that present there will be cleared during the time of foundation work in presence of CFUG members. During the enumeration of trees in tower pads the enumeration of trees in AP 44/1 was mistakenly missed by Bhimeshwor Sub-division Forest Office. Hence an application has been forwarded to the Divisional Forest Office, Dolakha for further processing and cutting approval. Altogether 690 numbers of trees have been cut for tower pad in thirteen APs of nine CFs till this reporting period. Handover of the felled trees to respective CFUGs has been completed in presence of officials from respective Forest Sub-division Office in Dolakha district. Similarly, stamping of trees in Sindhupalchowk district of this section has been completed. Sub-division Forest Office, Barhabise has prepared the hammer seal data for community forest of Tripurasundari RM. The felling is done only in monsoon as felling of trees during monsoon is not allowed by Department of Forest and Soil Conservation and also felling could lead to erosion, landslide, and high surface runoff leading to flood and even reduce ground water recharge due to exposure of land, reduced percolation and infiltration. Besides, all bird species nest and entire biodiversity thrives during this time and any disturbances in forest can lead to greater losses.

TKTL passes through Charnawati watershed, one of the watersheds among three selected for REDD pilot project. Out of 58 CFs in the watershed, twelve CFs are affected by New Khimti-Barhabise section where tower pads lie in five CFs and RoW impacts seven CFs as shown in **Figure-6**. The Charnawati watershed is resided by rare Thami people who are considered to have close connection with forest for their livelihood and culture. So, to offset the impacts by the intervention of TKTL, consultation meetings with CFUGs affected regarding their capacity development programs were conducted.

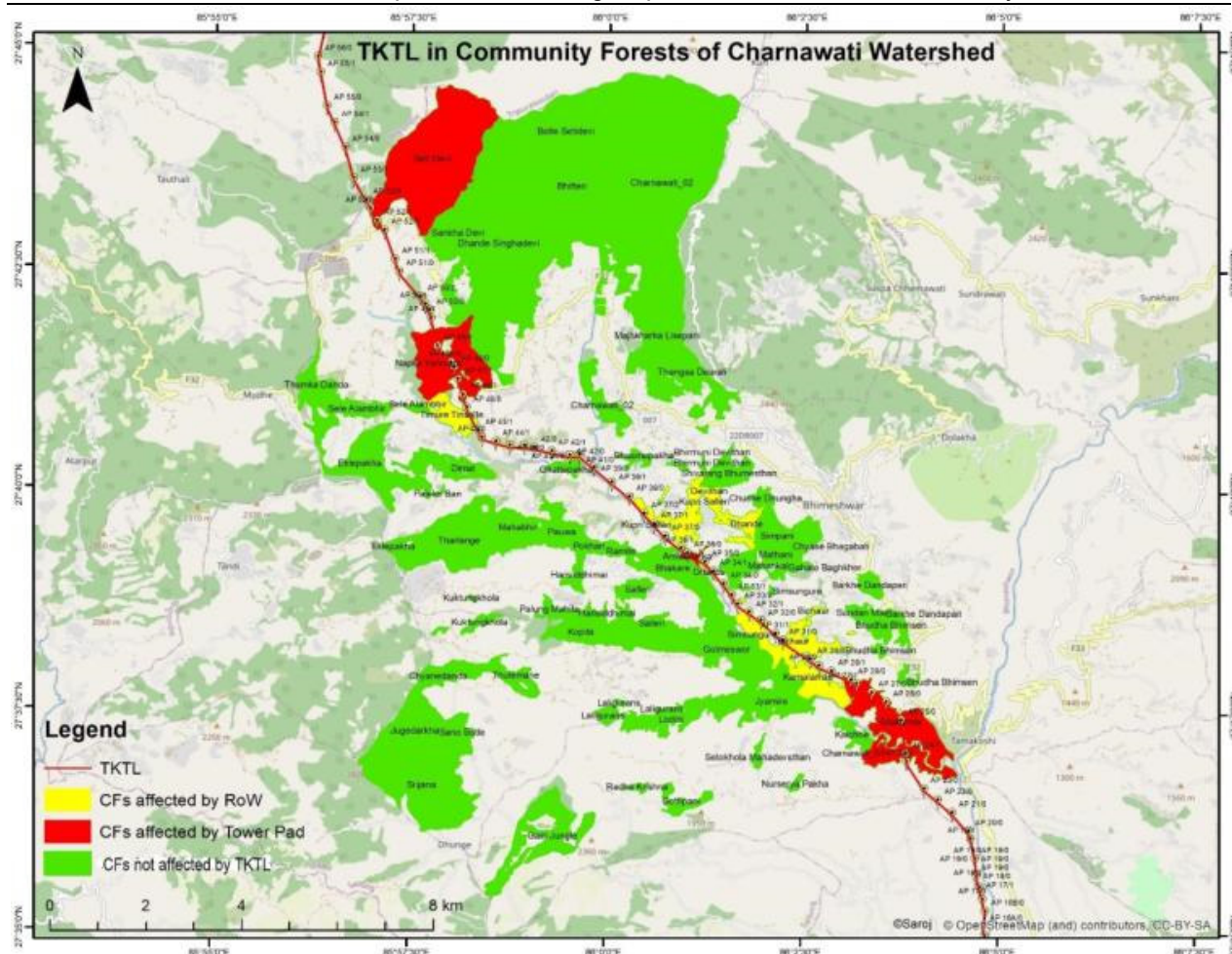


Figure-6 CFs in Charnawati Watershed affected by TKTAL

Barhabise-Changunarayan TL Section

The enumeration list shows more trees to be cut than expected from the IEE report and thus IEE has to be updated, in the portion of Sindhupalchowk Forest area, especially in Balephi RM.

After the agreement between DoFSC and NEA, the letter has been dispatched to respective DFO, from where the required letter and approval has been granted. Based on those granted permission, the tree cutting has been completed in following location in direct supervision of representatives from respective Ilaka Forest Office: AP 13/1, AP 13A/0, AP 19/0, AP 20/0, AP 21/0, AP 22/0, AP 23/0, AP 26/0, AP 27/0, AP 27/1, AP 34/0, AP 36/0, AP 36/1, AP 36A/0, AP 46/0, AP 50/1, AP 52/0 and Row: AP 23/0 - AP 24/0 with the total 2128 number of trees being felled. All the felled trees have been handed over to respective CFUGs in presence of respective Ilaka Forest officials. The complete cadastral survey has not been finished in Lapsipedi-Changunarayan section and thus the further process for tree marking and cutting has not been preceded further in this section.

The district wise tree cutting status in TKTAL is shown in **Figure-7** below and the details are presented in **Annex-10**.

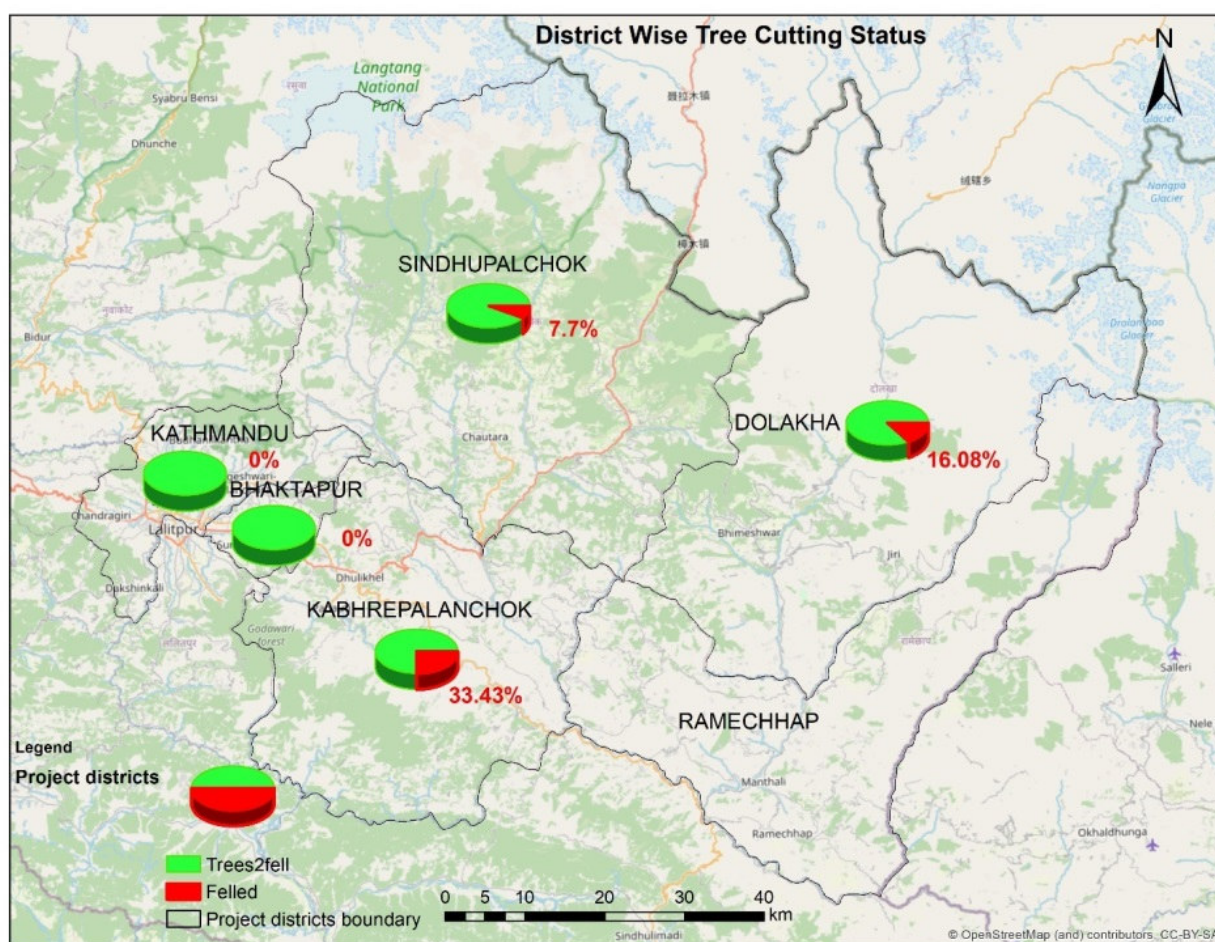


Figure-7 District wise tree cutting status in TKTL

4.4 Status of Compensatory Plantation Plan

An agreement has been done with Department of Forest and Soil Conservation and Nepal Electricity Authority to provide fund for compensatory tree plantation for all the trees to be felled in TKTL. A current tree enumeration shows that 35,231 trees to be felled in TKTL, however the trees number might decrease during the construction phase as the project will cut only the required tree for foundation clearance and the required trees for RoW clearance and will avoid tree cutting in valleys and trees with smaller height that does not obstruct the RoW clearance. Thus, the project will not clear all the trees that come in TKTL alignment.

The agreement between DoFSC and NEA clearly explains that the fund will be provided in three installments. The first installment will cover the compensation cost of all the trees that will be felled, the second installment will cover the compensation cost for the area of the land that has to be acquired and the third installment will cover the compensation cost for the caretaking of the compensatory plantation. The entire fund will be deposited in the Forest Development Fund of department of Forest and Soil Conservation. NEA has paid the cost of NRs. 165,058,031 for acquired land. The Divisional Forest Office, Dolakha has prepared the cost estimate of NRs. 27,025,773.84 for compensatory plantation including five years protection based on the number of trees to be felled on the tower pad and acquired land submitted by project office. The estimate also incorporates the casualty damage of 20% for first year and 10% for second year.

4.5 Consultation with Community

The regular consultation with the local peoples, PAFs and relevant stakeholders is conducted whenever needed. Information regarding project activities is shared with them and any questions/queries are answered. While implementing the RP, IR activities a meaningful consultation, group discussion programs is carried out with the PAFs. The regular field visit, consultation and interaction is being conducted by strictly following the Standard Operating

Procedures (SOP) for COVID-19 issued by PMD as there are some evidences of new COVID-19 variant Omicron in Nepal. There were 63 public consultations held during this reporting period with the total participant numbers 900 (Male – 743 and Female – 157). Among those consultations, environmental related consultations are presented below in **Table-5**: Since, most of the consultations were informal, hence lacks proper minuting, however documented with photographs.

Table- 5: Environment Related Public Consultation Details

SN	Location and Date	Major Issues in Discussion	Participant			Remarks
			Male	Female	Total	
New Khimti – Barhabise TL section						
1.	New Khimti, Manthali Municipality (2021/07/21)	<ul style="list-style-type: none">Regarding public notice during Updated IEE and IEE	23	2	25	PAFs were informed about IEE and Updated IEE process
2.	District Administration Office, Manthali, Ramechhap (2021/08/12)	<ul style="list-style-type: none">Briefing on procedures of conducting IEE and update IEE to Chief District Officer	8	0	8	
3.	Manthali, Ramechhap (2021/08/12)	<ul style="list-style-type: none">Briefing on procedures of conducting IEE and update IEE to Chairperson of Manthali RMPublic notice displayed, proofs of deed and recommendation letter collected were shared to the Chairperson	7	0	7	
4.	Manthali Municipality Office (2021/08/21)	<ul style="list-style-type: none">Regarding public notice during Updated IEE and IEEPublic notice displayed, proofs of deed and recommendation letter collected were shared to the mayor	5	0	5	
5.	Shailung RM-7, Bhadreshwar (2021/08/26)	<ul style="list-style-type: none">Regarding maintenance of CFUG building and hence use of access road through Charnawati community forest	7	0	7	
6.	Barhabise Municipality-4 (2021/08/27)	<ul style="list-style-type: none">Landslide on tower footing of AP 62/0Consultation with land owner regarding shifting of tower footing, landowner has no issue on shifting of tower footing.	9	2	11	
7.	Barhabise municipality-4, (2021/09/02)	<ul style="list-style-type: none">Landslide on tower foundation of AP 62/0	6	2	8	
8.	Sankhe, Manthali Municipality, Ramechhap (2021/09/07)	<ul style="list-style-type: none">Procedural errors during IEE/Updated IEE study (Lack of public consultations/no consultations with the respective local levels/omission of PAFs of RoW during the survey)Inappropriate provision of 10-20% compensation for the PAFs of Right of Way8	30	4	34	The meeting was not cordial and hence inconclusive.
9.	Divisional Forest Office, Dolakha (2021/09/14)	<ul style="list-style-type: none">Use of access road through Charnawati community forest	9	0	9	
10.	Bhimeshwar Municipality-7, Makaibaari (2021/09/18)	<ul style="list-style-type: none">Slope stabilization outside foundation area of AP 39/1	5	0	5	

SN	Location and Date	Major Issues in Discussion	Participant			Remarks
			Male	Female	Total	
11.	NEA Head Office, Ratnapark (2021/10/04)	<ul style="list-style-type: none"> Resolution of grievances raised by PAFs of Manthali, Ramechhap and Shittali, Dolakha Regarding field inspection for impact analysis 	14	1	15	
12.	Sankhe, Manthali Municipality, Ramechhap (2021/10/27)	<ul style="list-style-type: none"> Field inspection for impact analysis in Manthali, Ramechhap and Shittali Dolakha 	23	0	23	
13.	Bhimeshwar Municipality (2021/12/03)	<ul style="list-style-type: none"> Restoration of eroded land near tower foundation 	7	0	7	
14.	Melung (2021/12/13)	<ul style="list-style-type: none"> Spoil stabilization and construction of irrigation canal 	14	0	14	
15.	Bhimeshwar Municipality (2021/12/20)	<ul style="list-style-type: none"> Upgrade and protection work of the road 	9	0	9	
Barhabise – Changunarayan TL section						
1.	Shankarapur Municipality (2021/07/18)	<ul style="list-style-type: none"> Addressing the issues raised by the PAFs in the meeting held on 2nd July 2021 Explaining the process and procedures conducted during IEE; process and procedures for compensation determination, distribution and land acquisition; socio-economic & health impacts of substations and TL Explaining the process of grievances resolve mechanism, and formation of GRC 	28	0	28	
2.	Shanlarapur municipality-5, ward office (2021/08/02)	<ul style="list-style-type: none"> Provide a brief description of TKTL project, its activities, alignment and footprints Explain the process and procedures adopted during IEE and land acquisition Provide information on impacts of transmission line Formulate the GRC and explain the GRM and grievances resolve process and procedure Address other issues raised by PAFs 	32	1	33	
3.	Balephi-6 (2021/08/31)	<ul style="list-style-type: none"> Consultation with PAFs/CFUGs at Khadichaur areas. 	7	0	7	
4.	Chautara (2021/11/1)	<ul style="list-style-type: none"> Discussion and Consultation with CFUG and PAFs at AP25/3 area for starting of stringing works. 	8	3	11	
5.	Sindhupalchowk DFO Office (2021/11/15)	<ul style="list-style-type: none"> Discussion and Consultation with AFO for clearing of RoW trees and few tower locations 	7	0	7	
6.	Sindhupalchowk DFO Office (2021/11/18)	<ul style="list-style-type: none"> Discussion and Consultation with DFO/AFO for clearing of RoW trees and few tower locations 	5	0	5	
7.	Balephi-5 (2021/12/3)	<ul style="list-style-type: none"> Discussion and Consultation with local peoples of Balephi-5. The local are demanding maintenance of irrigation pipe 	8	0	8	The ESMU team explains the scenario to Project Manager and the

SN	Location and Date	Major Issues in Discussion	Participant			Remarks
			Male	Female	Total	
		line and providing new pipe at AP23/0.				project office has provided the irrigation pipe, damaged by landslide triggered by the excavation and dumping of spoil.
Total			271	15	286	

(Source: Field visit)

4.6 Monitoring Visits and Discussion

Each ESMU team is conducting regular compliance monitoring and supervision in their respective section. A series of virtual discussions were held on 2021/07/05, 2021/07/19 and 2021/08/18 with ADB officials, PMD officials and project office staffs regarding issues raised by PAFs in Ramechhap district. Besides the Managing Director (MD) of NEA, Mr. Kulman Ghising visited Barhabise Substation on 31st October 2021 and took a brief overview and construction status of substation as well as transmission line. Along with him all the contractors of different sub-project (Substation, Transmission line) were present and brief him accordingly. ESMU team also briefly explains the present scenario, progress status, local/social issues and other hurdles of Barhabise substation, Lapsiphedi substation, Changunarayan substation and 400 kV as well as 132 kV transmission lines.

Similarly, a quick walk over of the 400 KV TL alignment of Lapsiphedi section, visit of the acquired land of Lapsiphedi substation, a glance of 132 KV TL alignment from the Lapsiphedi substation was conducted on 22nd December 2021. The team members included during the visit was the Chief District Officer (CDO) of Kathmandu District, Mr. Govinda Prasad Rijal; the Area Administration Officer (AAO) of Sanku, Mr. Raj Kumar Rai; Chief of PMD, Mr. Tara Pd Pradhan; along with the respective project managers, project officials, ESMU team and the contractor personnel. The visit ended with sharing of the project progress, status, issues and problems.

4.7 Implementation of Mitigation Measures

4.7.1 Material Storage Yards and Workshop

The storage yard and workshop have been set up by contractor (KEC International Limited) at Kiratichhap of Bhimeshwar municipality-5 on a rented land for New Khimti-Barhabise section. The contractor has established another storage yard at Kharidhunga of Bhimeshwar municipality. Currently, including a security guard there are 5 full time staffs and 7 temporary staffs in this section in the storage yard.

The storage yard and workshop have been set up by contractor of Barhabise-Changunarayan TL section at Kuntabesi close to Cha Khola at Mandandeupur Municipality of Kavrepalanchowk District approximately 56 km away from Kathmandu and 10 km from Zero Kilo on a rented land. Currently, including a security guard there are 5 full time staffs in the yard.

Similarly, the storage of construction materials at different construction sites is kept adjacent to the site. The storage of those materials at each site is satisfactory. However, the contractors are regularly advised for proper storage of these materials at the designated sites. The detail description of the status of construction material on each site is described below in **Table-6**:

Table-6: Status of Storage of Construction Materials at each site

Transmission Line	Construction Material	Storage Type	Condition
New Khimti – Barhabise TL section	Cement	Stored in a temporary hut	Stored in elevated area free from water. Condition was in satisfactory condition
	Sand	Open Storage	Sand stored near the aggregates bordered by the bricks and was in satisfactory condition
	Aggregate	Open storage	Stocked on the construction site in a satisfactory condition .
	Reinforcement bar	Open air storage	Stored in open ground with no ground clearance and in unsatisfactory condition
	Cement	Stored inside the rented houses	Moisture and water proofing were done and the condition was good

Transmission Line	Construction Material	Storage Type	Condition
Barhabise – Changunarayan TL section	Sand	Open storage	Direct piling on simply labelled land, covering with simple plastics as a water proof layer, bordered by small boulders to restrict foreign material, however not enough separation distance from aggregate, however satisfactory condition
	Aggregate	Open storage	Direct piling on semi-labelled land, no water proof layer however bordered from direct runoff and foreign material, not enough separation distance from sand, however satisfactory condition
	Reinforcement Bars	Open air storage	Storage provided without sufficient clearance from ground, no water proofing layer, not satisfactory condition

(Source: Field visit)

4.7.2 Establishment of Labor Camps/Camp Site Management

New Khimti – Barhabise TL section

The contractor has rented private houses as well as established a temporary labor camp in the sites with basic accommodation including safe drinking water and lighting facility. The temporary tarpaulin camp is used to take rest during daytime. The contractor has been advised to follow the labor camp standard as per the EHS plan. The 54.14% (366 out of 676) of labors were found to be local in New Khimti-Barhabise TL section during this period.

Barhabise - Changunarayan TL section

In Barhabise - Lapsipedi TL section, the contractor (Larsen & Toubro Ltd.) has rented private house with proper arrangements for accommodation (warm cloths, bed and lodging sets, mosquito nets and insect repellent), light/power system and drinking water. The contractor has been advised to follow the campsite plan as addressed by them in their approved EHS plan. The 54.85% (362 out of 660) of labors were found to be local in Barhabise-Changunarayan TL section during this period. The indicators were found complied in most of the sections whereas in some sections they were partially complied, the detail summary is presented in **Table-9**.

The 56.74 % (758 out of 1336) of labors were local in all the sections of transmission line during this monitoring period. The detail employment data record is presented below in **Table-7**:

Table 7: Employment Data Record

Reporting month	Reporting station/TL	Total No. of labor	No. of local/Nepali labor				No. of women labor		
			Total	Marginalized labor			Skilled/ Semiskilled	Unskilled	Total
				Skilled	Unskilled	Total			
July– December , 2021	New Khimti – Barhabise section	676	396	31	142	173	0	0	0
	Barhabise – Changunarayan section	660	362	43	48	91	0	0	0
Total		1336	758	74	190	264	0	0	0
Percentage (%)		100	56.74	5.54	14.22	19.76	0	0	0

(Source: Field data)

4.7.3 Occupational Health and Safety Measures

The PMD has issued and circulated SOP for COVID-19 Risk Management at Work Place on 16th August 2020, both in English and Nepali version to all its associated units and requested to follow the guidelines strictly during construction, compliance monitoring, field visits and all other associated working activities. After the outbreak of COVID-19, all the construction and other project related activities are being done following the circulated guidelines.

Similarly, for both the sections the contractor has submitted the EHS plan to NEA including SOP regarding COVID-19. The Health and Safety Officer has been recruited by the contractors for compliance in order to prevent potential harm to labors/staffs during construction activities. Regular instructions, orientations and pep talks in site during construction work regarding Occupational Health and Safety, and use of PPEs are being conducted. The construction workers and field staffs have been provided with Personnel Protective Equipment (PPEs) and safety gears

like helmet, reflective jacket, facemasks, goggles, and boots etc. Health and Sanitation facilities to the construction workers have been installed and first aid kit box has been arranged in the sites. Also, the labors/staffs have been following the Standard Operation Procedure for COVID-19 during the construction work. The contractors have established isolation rooms in case of COVID case in their respective guest house fulfilling all the requirements for isolation.

The assigned Health and Safety Officer is in regular monitoring of their TL section. The ESMU team has monitored the sites as per their approved EHS plan and if found non-compliance immediate action has been taken. The site in-charge, H&S officer has been advised to arrange and maintain the compliance as per their plan.

New Khimti-Barhabise TL section

No issues have been seen in this reporting period.

Barhabise-Changunarayan TL section

The contractor has been advised to submit the Occupational Health and Safety Measures and Plans for the continuation of work to abide the protocols and circulars issued by GoN after the global pandemic of COVID-19; and thus they submitted the Supplementary Health and Safety Plan on account of COVID-19 Pandemic dated 20 July 2020.

No issues have been observed in this reporting period.

The detail safety and safeguard compliance status and issues along with corrective actions for the all the sub-projects are presented in **Annex-6**, and **Annex-7**.

4.7.4 Slope Stabilization and Bio-engineering work

The TL passes through private and community land along with public structures and utilities. Similarly, precaution and special measures for protection of foundations are needed for towers and poles located in mountainous and rough terrain. However, no any tower foundations have been constructed so far with zero problem of slope instability. The construction of tower foundation protection wall will be started after the completion of all the pits of the specific tower. The construction will be done before labeling of the excavated debris/spoils and erection of the tower. The slope stabilization and tower protection work has been started in few locations to mitigate and control erosion, surface runoff and slope instability. Those construction works are being done after the approval from NEA Project Office on the design and types of walls designed by the contractor in support of their external consultant.

New Khimti-Barhabise TL section

In AP 32/0, a slope failure has been seen near the tower foundation, for which, protection work (Gabion wall and RRM wall) has been proposed. Also, in AP 62/0 a crevasse of nearly 20 m had seen on tower foundation. A team of geologist from NEA, project office team and ESMU team together inspected the location and geologist recommended shifting of the center point of the foundation towards 30 m south from the existing center point is safe. However, in the late September, a huge landslide occurred in the location, because of which the tower has to be shifted.

Barhabise- Changunarayan TL section

During this reporting period the status of the tower protection work is as follows in Barhabise – Changunarayan TL section:

Completed: - AP 3/0, AP 3A/0, AP 5/0, AP 5A/0, AP 6/0, AP 7/0, AP 15/0, AP 16/0, AP 17/0, AP 22/0, AP 30A/0, AP 30A/2, AP 37/0, AP 40/0, AP 52A/0 and AP 53/0

In progress: - AP13/1

4.7.5 Air, Water and Noise Quality

The major stretch of the TL traverses through rural setting with minimum settlements. The construction activities are limited to small area and the impact on the ambient air quality will be low in magnitude, site specific in terms of extent and short in duration. The main source of air pollution along the alignment is due to the vehicular movement along the earthen road and emission of dust during foundation activities, for which, contractor has been instructed to sprinkle the water.

There is possibility of water pollution especially in sections where tower pads are located nearby water bodies. Site specific and short duration permissible impacts on nearby river due to construction activities have found. The contractor has been instructed for proper disposal of solid

waste, cement slurry, construction materials and human waste. The contractor is checking the pH level of drinking water of labor camp and has been instructed to test the other major drinking water quality parameters (Turbidity, Conductivity, Total Suspended Solids, Total Dissolved Solids, and heavy metals such as As, Cd, Pb, Hg, Cu, Zn, Mg) of labor camp as per the standard of National Drinking Water Quality Standards and Directives, 2005. However, the contractors are providing tap water for drinking purpose.

Insignificant interruption in noise quality has found due to emission of noise and vibration during construction activities. Noise pollution is temporary and low in magnitude, site specific and for a short duration. The contractor has been prohibited for the construction work during night time. Similarly, the air, noise monitoring is done in quarterly basis and the test results obtained are as below shown in **Figure 8**.

L&T CONSTRUCTION

POWER TRANSMISSION & DISTRIBUTION IC

Issue 2-Rev 00

Ref: IM-9.1.1.1- D

ENVIRONMENT MONITORING REGISTER

Name of the Project: 400kV BKTL

Job Code: LE170523

BU/Cluster: Delhi

Date: 21.12.21

Environmental Attributes	Relevant Parameters	Permissible Limit	Test results	Method of Monitoring	Periodicity of Monitoring	Record reference
Air Monitoring	Dust	153-160 PPM	103	Real- Time Air Quality Index	Quarterly	As per Nepal Govt. Data
	CO2	250-400 PPM				
Noise Monitoring	At Store Office	90db	45db	Google App Sound Meter	Quarterly	
	At outside of store		51db			
	Near Rod cutting area		69db			
Other Factors						

(Name & Signature of EHSO)

Figure-8: Air Noise Quality Monitoring Test Result

4.7.6 Debris Management

The debris and spoil due to excavation of tower foundation have been partially managed in the project areas. The contractors are regularly advised to manage safe spoil dumping site with no adverse environmental and social impacts. Also, they have been advised to put separate bins for degradable garbage, plastic, glass and metal to dispose properly in labor camps.

New Khimti-Barhabise TL section

In AP 37/1, excavated debris during foundation work has made an irrigation canal stagnant, for which, contractor has been advised to restore the canal after the completion of the foundation work. The excavated spoils was stored safely near the tower foundation and later used for back filling.

Barhabise-Changunarayan TL section

No issue/progress has been seen in this reporting period; however, few formal applications expressing their fear regarding erosion and mud flow in their land besides tower pad were received from the PAFs. All those applications were forwarded instantly to Project Office and even the issues were discussed with contractor and were advised for field visit/monitoring and take precautionary measures soonest.

4.7.7 Drainage Management

Since most of the tower pads are located at the top of subdued hillocks, on the ridges and on the flat agricultural land, the interference with drainage patterns due to the construction of the tower pads has minimal impact. The construction of tower foundation has not affected the natural drainage pattern yet. However, the contractors have been advised to store the excavated earth material without damaging the natural drainage pattern, if any. Also, they have been instructed to manage the solid waste generated within the temporary labor camp site so that it won't make stagnant the nearby drainage pattern.

New Khimti-Barhabise TL section

No issue/progress has been observed in this reporting period.

Barhabise-Changunarayan TL section

No issue/progress has been observed in this reporting period.

4.7.8 Firewood Use

Since the initiation of the construction activities the EMSU monitoring team is stationed at respective site office and is monitoring regularly. The contractors and labors are using liquid petroleum gas (LPG) for cooking purpose. Firewood has not been used.

No issue/progress has been observed in this reporting period.

4.7.9 Safety Gear

The compliance of safety gear or PPE is being monitored as the construction work is progressing. All of the contractors from New Khimti-Barhabise TL section and Barhabise – Changunarayan TL section have submitted their approved Environment Health and Safety (EHS) plan which includes health safety as well as PPE requirements. Also, the labors/staffs are following the SOP for COVID-19 during construction work issued by PMD. Also the contractors have been advised to arrange and install waste management facility, barricade (Reflective and hard) the construction site, drainage system, safety sign and restriction zones/compartments etc. promptly when required.

No issue/progress has been observed in this reporting period.

4.7.10 Livelihood Restoration and Enhancement

For livelihood restoration and enhancement of PAFs, especially for those households who lose their residential structures and whose land losses more than 50%, the trainings are being focused. The duration of training will be as per the CTEVT standards. The ESMU team is going to conduct skill development training and currently, the selection of participants is ongoing. Also, the consultations with GRC members and selection of participants for other trainings such as training for Cultivation of NTFP under the RoW and Forest Based Income Generation and Entrepreneurship Training are ongoing.

4.7.11 Environmental & Social Awareness and Trainings

- a) **Installation of Hoarding Boards:** ESSD prepared and installed hoarding boards in sixty different locations under TKTL consisting public awareness messages including environmental protection, bio-diversity conservation, health & safety issues, project information and general rules and regulations.
- b) **Social Awareness Program:** ESMU team conducted one-day social awareness program in 3 different locations in New Khimti-Barhabise TL section and 3 different locations in Barhabise – Changunarayan TL section. The participants were mostly from the TL affected households and people living close to TL. The awareness program covered about mode of compensation payment, Compensation Determination Committee and process, economic opportunities due to TL, HIV AIDS and Gender Equality and Social Inclusion.
- c) **Occupational Safety Training:** ESMU team conducted occupational safety trainings to the labors in 3 different locations in Barhabise-Changunarayan TL section. The training was focused on occupational safety, use of PPEs, safely handling of equipment and other safety measures to be followed during construction activities. The training explained the importance of EHS plan submitted by the contractor and also the SOP guidelines provided by PMD.
- d) **Health and Sanitation Program:** The program was conducted to the labors in 3 different locations in Barhabise –Changunarayan TL section. The trainer emphasized the training cum orientation program on personal hygiene, sanitation at work place, proper hydration during

work, toilet, labor camp and proper diet. Also, the trainer explained about the current global COVID-19 pandemic and its situation in Nepal. She oriented the participants about proper hand washing, social distancing, isolation and other mitigation measures to stay from COVID-19.

- e) **Conservation Awareness Raising Program:** The program was conducted in 2 different locations of New Khimti– Barhabise TL section. Most of the participants were CFUG members, Foresters from Bhimeshwor Sub-division Forest Office, and locals. The program covered about the importance of biodiversity, forest, wildlife and bird conservation, plantation and economic importance of forest and its role in rural livelihood improvement.

No any programs have been conducted in this reporting period.

4.7.12 Number of Grievances (Documented, resolved and under processing)

The grievances raised on the substation and transmission line are being received and recorded. The GRCs are in the process of formation in local levels. From the starting of the project, a total of 59 grievances have been recorded till this reporting period. Among those recorded grievances, 47 grievances are being resolved and remaining 12 are under process. The recorded environmental related grievances are presented below in the **Table-8:**

Table-8: List of Grievances and its status

SN	Location	Issues	Recorded (Type/Date)	Action
Tamakoshi-Kathmandu 220/400kV Transmission Line Project (TKTLP) – ETESIP				
New Khimti – Barhabise TL section				
1.	Project Office, Kharipati	Claiming procedural error during IEE and Updated IEE, provision of 10-20% compensation for RoW	PAFs/written 2021/08/01	Meetings conducted with PAFs in presence of Mayor and Ward Chair and displayed the proof of deeds, public notice and explained procedures of conducting IEE/Updated IEE based on EPA, 1996 and EPR, 1997. A committee has been formed for impact analysis of the PAFs of RoW. The committee is conducting impact analysis.
2.	Melung RM-7	Landslides near tower foundation	PAFs/Verbal 2021/12/13	Protection works (Gabion wall and RRM wall) have been proposed.
3.	Bhimeshwar Municipality-9	Protection works of the access road	PAFs/Verbal 2021/12/20	Conducted a meeting with PAFs in presence of Ward Chair. Meeting concluded the protection works will be done through CSR activities.
Barhabise – Changunarayan TL section				
1.	Barhabise-3	Requesting for protection of land and compensation for crop loss	Laxmi Shrestha/Written 2021/07/07	Under Process: The application has been forwarded to PO and advised contractor to provide crop compensation
2.	Balephi-8	Requesting for maintenance of rural road	PAF/written 2021/08/29	Solved
3.	Balephi-6	Requesting for crop compensation	Chitra Pd Chaulagain/written 2021/08/31	Solved
4.	Balephi-5	Requesting for maintenance of damaged house due to mud flow from access road	PAF/Verbal 2021/09/07	Solved
5.	Balephi-5	Requesting for irrigation pipe	PAF/written 2021/12/05	Solved

(Source: Field visit)

4.7.13 Summary of Environmental Compliance Monitoring

The brief summary of the environmental compliance monitoring summarizes as follows (**Table-9**).

Table-9: Brief Summary on Status of Environmental Compliance Monitoring

SN	Monitoring Indicators	Status	Action Taken	Recommendation
1	Assurance of EHS Plan submitted by Contractor (L&T- Package II, KEC, Package I)			
	Assignment of Health and Safety Officer	<ul style="list-style-type: none"> Appointed H&S Officer (Complied) and regular site visit has been started (Complied) Submitted updated EHS plan incorporating SOP guidelines by contractor 	<ul style="list-style-type: none"> Advised to be in regular touch with ESMU team Advised for the rotational field visit, in all the working sites Keep an updated accidental record, EHS and Campsite management report, follow EHS plan and SOP guidelines strictly 	<ul style="list-style-type: none"> Contractor should provide the full detail information of the H&S Officer prior to his assignment to ESSD/ESMU team Contractor should develop a provision for H&S Officer to be accountable to ESSD/ESMU team Contractor should update the information and related reports to the ESMU team every month A copy of updated EHS plan should be provided to ESMU team soon after the approval
	Occupational Health & Hygiene Inspection	Complied	<ul style="list-style-type: none"> Contractor has been advised to follow the plan strictly Advised for the measurement of body temperature before starting work every morning of all manpower Maintain enough social distancing 	
	Health Campaign	Complied		<ul style="list-style-type: none"> Contractor should inform about the program in advance to ESMU team
	First aid box	Installed & complied	<ul style="list-style-type: none"> Regular monitoring during site visit and the contractor is advised to keep all the necessary medicines and refill when used Advised to contact the nearby medical house for prompt response in case of accident Also advised to keep the ambulance standby, however, the contractors are using their own vehicle if incase needed 	
	Use of PPE	Complied	<ul style="list-style-type: none"> Advised contractor to provide PPE to all the staffs and labors before entering the working site Had been strictly advised "NO PPE NO ENTRY" Verbal warning was given to petty contractor, site in-charge of lead contractor if misuse and absence of use of PPE in site during monitoring was found by ESMU team several times in different locations Information has been shared to Project team during site visit 	<ul style="list-style-type: none"> Contractor should provide enough PPE sets in each location and should also advise their petty contractors to provide PPE to all the labors. Payment should be halted of petty contractors by contractors and lead contractor by project Office, in recommendation of ESMU teams in case of misuse, and absence of use of PPE in site
2	Assurance of Campsite Management Plan (Included in the approved EHS plan, section 14.10 of L&T)			

SN	Monitoring Indicators	Status	Action Taken	Recommendation
	Weekly Inspection	Complied	<ul style="list-style-type: none"> Advised site in-charge for regular inspection 	
	Supply of Drinking water	Complied		
	Toilet	Satisfactory	<ul style="list-style-type: none"> Advised site in-charge to provide mobile toilet facility, so that the labor can transfer in different construction site Advised site in-charge to arrange proper toilet facility in the temporary labor camp, however, most of the labor camps are in the rented house after COVID-19 	<ul style="list-style-type: none"> Project office should enforce contractor to provide mobile toilets for the temporary labor camps
	Disposal of waste materials	Partially complied	<ul style="list-style-type: none"> Advised site in-charge for regular inspection and provide proper orientation to labor on waste management Prohibited labors to throw kitchen garbage and other waste materials unattended 	<ul style="list-style-type: none"> Project office should enforce contractor to provide bins for waste collection and proper disposal
	Washing facilities	Complied	<ul style="list-style-type: none"> 	
	Pest control and insect repellent	Complied	<ul style="list-style-type: none"> Advised site in-charge to provide mosquito nets, however, most of the labor camps are in the rented house after COVID-19 	
	Adequate fire fighting	Not complied	<ul style="list-style-type: none"> Advised site in-charge to provide fire extinguisher, however, most of the labor camps are in the rented house after COVID-19 	
	Use of LPG	Complied		
	Firewood	Not used/Nil	<ul style="list-style-type: none"> Prohibited to use forest woods 	
	Bed sheets and mattress	Complied		
	Camps	Complied	<ul style="list-style-type: none"> Advised to provide water proof, leak proof camps, however most of the labors are stationed in nearby rented house after COVID-19 	
3	Labor			
	Use of Local Labor	56.74% till this reporting period (Marginalized- 19.76% - (Skilled- 5.54% & Unskilled- 14.22%))	<ul style="list-style-type: none"> Advised contractor to prioritize local labors for construction activities 	
	Women labor	Nil	<ul style="list-style-type: none"> Advised contractor to engage female labors too, however most female in current working sections are not interested to join the labor work 	
	Child Labor	Nil	<ul style="list-style-type: none"> Prohibited contractor in using child labor 	
4	Tower Foundation and Erection			

SN	Monitoring Indicators	Status	Action Taken	Recommendation
	Procedural Guideline	Prepared and complied	<ul style="list-style-type: none"> Advised contractor and petty contractors to follow the guidelines strictly 	<ul style="list-style-type: none"> Contractor should provide the approved Procedural Guideline to ESMU team soon after the approval Payment should be halted of petty contractors by contractors and lead contractor by project Office, in recommendation of ESMU teams incase found not following the guideline and working haphazardly
	Barricading of the area	Partially complied (70%)	<ul style="list-style-type: none"> Advised contractor to barricade the area properly before starting of excavation and other construction activities 	<ul style="list-style-type: none"> Payment should be halted of petty contractors by contractors in recommendation of ESMU teams
	Construction Signboards	Not complied	<ul style="list-style-type: none"> Advised contractor several times to keep proper signboards indicating construction activities going on in each location Shared information along with the project team too and even they have advised contractor several times to keep proper signboards prior to construction activities 	<ul style="list-style-type: none"> Project should not allow to start the construction activities without proper barricading and proper signboard installed in the proposed construction site
	Safety Instruction Board	50%, Complied only during erection	<ul style="list-style-type: none"> Advised contractor to provide safety training, instruction on each site before initiation of construction activities 	<ul style="list-style-type: none"> Project should not allow to start the construction activities without proper safety instruction each morning in the proposed construction site
	Stacking of construction materials	Partially complied (Cements and other equipment are stored renting a house in most of the site, whereas other aggregates, sand and reinforcement bars are kept in open air	<ul style="list-style-type: none"> Advised contractor to stack the material with proper coverage, protection and maintaining the distance from the excavated pit Advised site in-charge to check the condition of materials before using those materials Advised site in-charge not to provide and supply materials from the company warehouse if the petty contractor is missing the proper maintenance and proper stacking of materials in the field/site 	
	Inspection of excavated pit	Complied	<ul style="list-style-type: none"> Advised contractor to inspect the pit before concreting and other works Advised contractor to inform project technical team for inspection before concreting and other works Advised contractor to stop the further works in case of sliding, water sprouting before mitigating those hazards 	
	Placing of concreting mixer	Partially Complied	<ul style="list-style-type: none"> Advised contractor not to keep those machines near the pit and use proper canal to transfer the concreting mixture 	

SN	Monitoring Indicators	Status	Action Taken	Recommendation
	Lone worker	Restricted to enter alone, complied	<ul style="list-style-type: none"> Advised contractor not to entertain lone workers in the excavated pit 	
	Spoils	Partially managed	<ul style="list-style-type: none"> Advised contractor for safe dumping of spoils and use the same material for backfilling Advised contractor to provide spoil management plan in the sensitize site Advised contractor to use hard barrier to stop slipping/flowing of excavated material 	<ul style="list-style-type: none"> It is hard to maintain the erosion and slipping of spoils in the hilly terrain thus the contractor should provide the spoil management plan of each sensitize site before excavation work.
	Lunch and refreshment breaks	Partially complied	<ul style="list-style-type: none"> Advised contractor to give proper breaks to labors during construction works Advised contractor to provide/construct proper well sanitized toilets in each site 	<ul style="list-style-type: none"> Contractor should provide mobile toilets in each site wherever necessary
5	Vegetation Clearance	<ul style="list-style-type: none"> Tree enumeration completed (Total trees 35231, however, will be felled only the needed one, thus the number is expected to be reduced) Tree felled in 35 location (total 3299 trees) 	<ul style="list-style-type: none"> Project Office has done an agreement with ministry to provide funds in three installments for compensatory plantation 	
6	Public Consultation	Complied (mostly verbally, though PAFs are happy with the compensation rate, they are unwilling to sign minutes as their high demand and expectation are not fulfilled, however photo of each meeting is being captured and included in the respective months report)	<ul style="list-style-type: none"> Consultation since July 2021- 63 (total participant- 900, M- 743, F- 157) Regularly conducted following SOP guideline Telephonic discussion when needed 	<ul style="list-style-type: none"> It seemed all of the public consultation meeting should not be minute as the local's expectation and demands are beyond the project scope and once the minuting is done, they started halting the work demanding those demanded projects to be completed first. Eg. Demand of swimming pool in Barhabise area, drinking water lifting project Some demands are beyond the project scope eg. Sub-grading and black topping of rural road, cabling of distribution system, internet wi-fi facility to the whole village
7	GRC formation	Complied	<ul style="list-style-type: none"> 36 out of 45 (80%) GRCs formed Letter dispatched in almost all the respective wards and municipalities 	
8	Impacts and Safety Measures for COVID-19			
	Opening of Contractor's Office	Complied	<ul style="list-style-type: none"> Contractors are advised to follow the SOP strictly Regular cleaning and sanitizing, installation of hand washing and sanitizing stations along with pictures & signs 	

SN	Monitoring Indicators	Status	Action Taken	Recommendation
			<ul style="list-style-type: none"> Maintain distancing, body temperature screening, avoiding handshakes, hugging or any physical contact Always wear mask, isolation of person with symptoms 	
	Resuming work in the field	Complied	<ul style="list-style-type: none"> Barricading of the worksite, maintain record of the workers, installation of hand washing station Labor screening, COVID-19 test, regular medical checkup, daily body temperature measurement before work Avoid crowding and use of PPEs Minimize workers movement outside the camp, manage proper condition for workers accommodation Well ventilated and cleaned kitchen and toilet 	
	Emergency Protocols	Complied	<ul style="list-style-type: none"> Establish medical center with immediate access of Health worker and regular health checkup Establish mandatory health screening of all staffs and labors Establish enough number of quarantine and isolation shelters Establish dedicated vehicle for emergency 	
	SOP Implementation, Monitoring and Reporting	Complied	<ul style="list-style-type: none"> Established immediate access of certified health worker, assigned EHSO Maintained SOP compliance monitoring checklist and health screening register Regular inspection 	
9	Awareness and Training	Complied	<ul style="list-style-type: none"> EHSO regular field inspection and awareness program Pep talks, daily orientation conducted 	<ul style="list-style-type: none"> ESMU team also conducted Health and sanitation Programs and public awareness campaign

5.0 SAFETY ASSURANCE AS PER THE CONTRACTOR'S SAFETY PLAN

The contractors from both the sections has submitted their EHS plan to NEA incorporating SOP regarding COVID-19, and are following their respective plans during construction. Similarly, they have submitted the updated EHS plan incorporating the government guidelines, protocols and regulations in context of COVID-19 Pandemic. The objectives of the contractor's safety plan are as follow:

- To identify certain critical activities, assess the risk associated therein and suggest precautionary measures to avoid accidents
- To integrate Health, Safety and Environmentally friendly work practice
- To create EHS awareness to every individual associated with the project
- To provide the necessary EHS inputs
- To formulate and effectively maintain the accident prevention program of the project
- To achieve the prime objective of **"ZERO ACCIDENT"**

The contractor is committed to above mentioned objectives and in achieving the EHS performance standards by implementing and obeying following policies

- Compliance with applicable organizations Environmental, Occupational Health and Safety policies, guidelines and regulations
- Providing safe and healthy environment to all the staffs and labors being employed
- Establishing proper procedures in recognizing, implementing, maintaining, evaluating and monitoring EHS performances
- Continual improvement and periodical review of EHS performances and guidelines
- Providing appropriate health and safety training and awareness

6.0 IMPACT AND SAFETY MEASURES FOR COVID-19

The implementation of TKTL was also been affected due COVID-19 especially in field which includes construction activities, public consultation, GRC formation, GRC meetings, compensation distribution, CDC meetings, letter issuance from governmental bodies, tree marking/hammer seal, tree cutting, etc. Although the progress was halted to some extent, the virtual consultation meetings were conducted regularly and after the government loose down the construction activities had been initiated and progressed accordingly with the support and permission from local government bodies and District Administration Office. The contractors' regular staffs are vaccinated too. Still, there is no complete eradication or control of COVID and everyday a new variant is being spreading around the globe, all the activities are being carried out taking safety precautions, using PPEs, maintaining social distances and following the Standard Operating procedure. The **Table-10** below briefly describes the working procedure adopted and current status:

Table-10: Compliance Status for Impacts and Safety Measures Adopted in COVID-19

SN	Description	Indicators/Parameters	Compliance Status
1.	Opening of Contractors Office	<ul style="list-style-type: none"> • Cleaning, sanitizing and disinfecting before opening office • Installation of hand washing and sanitizing station, informative posters • Health screening, body temperature measurement of all the staffs • Arrange workstation maintaining proper physical distancing • Minimizing face to face meetings, avoiding hugging, handshakes & social gathering • Frequent hand washing and use of sanitizer and mandatory use of mask • Avoid touching eyes, noses, mouth with hands, sharing water bottles, coffee mug • Cover mouth, nose with tissues or elbow while coughing or sneezing • Providing hot water frequently • Immediate isolation of staff with cold and cough symptoms, information sharing with other staffs and immediate access to health worker 	Complied with
2.	Construction activities at site	<ul style="list-style-type: none"> • Barricading of construction site, entry allowed only of authorized person • Labor health screening, regular medical checkup, COVID-19 test & record keeping • Thermal screening, use of PPEs, mandatory use of face mask • Installation of hand washing station, cleaned toilets, proper drinking/hot water • Establishment of medical center with immediate access to health worker • Prohibit consumption of liquor and other tobacco related products • Avoid manual handling of the material, disinfect before handling • Minimize workers movement outside the camp and restrict outsiders to enter • Keep accommodation area clean, well-drained, dry, ventilated and hygienic • Emergency procedure and immediate contact to medical center in case of any symptoms 	Complied with
3.	Emergency Protocols	<ul style="list-style-type: none"> • Establish medical center with immediate access to certified health worker, arrange dedicated vehicle • Supply medical PPEs to health worker, guards and waste handling staffs • Enough number of clean and well-ventilated isolation and quarantine shelters being established • Tracing of all the persons in contact with the sick person and keep them quarantined 	Complied with
4.	SOP Implementation, Monitoring and Reporting	<ul style="list-style-type: none"> • Assignment of ESHO, certified health worker and conduct regular inspection • Prepare standard SOP compliance monitoring checklist and health screening register 	Complied with
5.	Awareness and Training	<ul style="list-style-type: none"> • Conduct regular awareness program on Health and Sanitation, Personal hygiene • Daily program on personal and occupational safety before initiation of work • Distribution of pamphlets and posters 	Complied with
6.	Infection and Recovery status	<ul style="list-style-type: none"> • No casualties recorded so far • 13 got infected and all recovered 	

7.0 ISSUES AND FOLLOW UP ACTIONS

The **Table-11** below shows the main environmental issues and follow up actions for the effective implementation of environmental safeguard measures.

Table-11: Major Issues and Follow up actions

SN	Major Issues	Action Taken
1.	Temporary labor camp improvement	Contractor, safety officer has been advised to take action for proper management of toilet, drinking water supply, mosquito nets and insect repellent
2.	Use of PPEs	Contractor has been advised to provide enough PPEs to the labors and all labors/staffs are instructed to use PPEs in site
3.	Proper management of excavated materials/spoils dumping	Contractor and sub-contractors have been regularly advised to prevent spoils leakage, haphazard dumping and excavation without proper precautions.
4.	Safe tipping site	Contractor has been advised to manage safe tipping site
5.	Noise Pollution	Contractor has been advised not to work at night producing noise
6.	OSH plan to abide the Protocols and Circulars issued by GoN to safeguard workers/direct stakeholders from the virulence of COVID-19 pandemic	The contractor has prepared, updated and submitted the Operational Health and Safety Measures, and is working following the appropriate guidelines
7.	Following of SOP for COVID-19	All the labors/staffs are advised to follow the SOP for COVID-19 issued and circulated by PMD during construction work.

(Source: Field visit)

8.0 ACHIEVEMENT ON MAJOR ITEMS OF FOCUS ON PREVIOUS REPORT

The detail status of the items and activities focused in previous report are presented in the **Table-12** below along with the suggested corrective actions.

Table-12: Achievement on Major Items of Focus on Previous Report

SN	Location	Item of Focus	Status	Description	Corrective action plan
A. Tamakoshi-Kathmandu 220/400kV Transmission Line Project (TKTLP) – ETESIP					
1.	New Khimti – Barhabise TL section	Tree clearance in tower footings of Dolakha district	Ongoing		
		Consultation meeting with contractor, PAFs, and project authorities as per requirement	Ongoing		
		Regular monitoring on Environmental safeguard, OSH of labors and labor camp management compliance monitoring	Ongoing		
		Conducting of Social Awareness Program and Conservation Awareness Raising Program	Completed		
		Formation of GRCs and record of grievances	Ongoing		
2.	Barhabise – Changuarayan TL section	Consultation meeting with PAFs, contractors, community and project authorities whenever wherever required	Ongoing		
		Monitoring of environmental components regarding landslide, debris fall, soil loss, health and safety of labors, sanitation, PPE, first aid and labor site conditions etc	Ongoing		
		Compliance monitoring	Ongoing		

SN	Location	Item of Focus	Status	Description	Corrective action plan
		Follow-up & Formation of GRC in the areas where the letter has already been dispatched	Ongoing	Completed in 400KV TL section and waiting for approval of cadastral report and final verification of land in 132KV TL section	
		Tree cutting in the tower pads	Completed except 1 location (AP47/3)	The respective location tree counting was missed during IEE.	The report has been submitted to ministry requesting for approval.
		Tree cutting in RoW	Ongoing	Waiting for the tree cutting approval letter	Regular follow up is going on in respective Division Forest Office

9.0 Proposed Major Item of Focus for Next Report

The following activities presented in **Table-13** below are proposed for the next month monitoring in the project sites:

Table-13: Major Items of Focus for Next Report

SN	Location	Activities
A.	Tamakoshi-Kathmandu 220/400kV Transmission Line Project (TKTLP) – ETESIP	
1.	New Khimti – Barhabise TL section	<ul style="list-style-type: none"> • Tree cutting in Sindhupalchowk district • Conducting of livelihood restoration and enhancement trainings • Conducting of Occupational Safety training and Health and Sanitation program to labors • Consultation meeting with contractors and project authorities whenever required • Environmental safeguard compliance monitoring • Implementation of CSR activities • Formation of GRC • Compensation distribution to PAFs
2.	Barhabise – Changunarayan TL section	<ul style="list-style-type: none"> • Consultation meeting with PAFs, contractors, community and project authorities whenever required • Monitoring of environmental components regarding landslide, debris fall, soil loss, health and safety of labors, sanitation, PPE, first aid and labor site conditions etc • Compliance monitoring • Follow-up & Formation of GRC in the areas where the letter has already been dispatched (132 KV TL section) • Speeding up the tree cutting process in RoW in coordination with respective Division Forest Office

ANNEXES

Annex-1: Regulatory Compliance Requirements

SN	Legal Requirements	Applicable Attributes	Project's Compliance Status
1.	Forest Act 1993	<ul style="list-style-type: none"> This act is applicable when a project requires a national forest area. Prior approval has to be received before the construction of the project. In addition to this it provides insights on prohibitive activities 	<ul style="list-style-type: none"> Cabinet and DoFSC have approved and granted permission for tree cutting and the letter has been dispatched to respective DFOs. Tree cutting approval has granted in Dolakha, Sindhupalchowk and Kavrepalanchowk from respective DFOs.
2.	Plant protection Act 1973	<ul style="list-style-type: none"> This act lists protected plant species name which needs to be protected during any intervention work in forest areas 	<ul style="list-style-type: none"> No such protected plant species has been cut.
3.	Forest Rules 1995	<ul style="list-style-type: none"> Government has enlisted 13 plant species in protection list of which it has banned felling, transportation and export of tree species Provides procedure of marking trees, measuring timber, and firewood and calculating their volume, determination of value and transportation of timber 	<ul style="list-style-type: none"> Agreement for compensatory plantation has been done with Department of Forest and Soil Conservation Fund has been released for felled trees in respective DFO
4.	Then Environmental Protection Act, 1997	<ul style="list-style-type: none"> This Act provides details of compensation in section 17 of the act in case of not abiding by the rules of the acts. Also, it directs a compensatory ratio of 1:25 for trees to be felled 	<ul style="list-style-type: none"> IEE done accordingly
5.	EPA, 2019 and EPR, 2020 has repealed EPA, 1996 and EPR, 1997 respectively	<ul style="list-style-type: none"> This Act provides details of compensation in section 35 of the act in case of not abiding by the rules of the acts. Also, it directs a compensatory ratio of 1:10 for trees to be felled. 	<ul style="list-style-type: none"> Incorporated the latest EPA rules and guidelines
6.	Use of National Forest area for National Priority Projects 2076 BS	<ul style="list-style-type: none"> Requirement of IEE along with mitigation measures in EMP for utilization of National Forest area Permission letter from DoF, CFUG Provision for providing compensatory land, compensatory plantation at the ratio of 1:10 and protection cost for five years or enough fund as per CPP incorporating all those activities 	<ul style="list-style-type: none"> IEE completed before initiation of project Permission and approval of tree cutting from cabinet and DoF obtained
7.	Bill for construction and development of National Priority Projects in Fast track, 2075	<ul style="list-style-type: none"> Preparation of report in coordination with respective forest office incorporating tree enumeration list to be cut during construction National Priority projects Responsibility for compensatory plantation and its protection cost for five years or equivalent fund to respective forest office Hammer seal process before tree cutting, stacking and handing over Conducting IEE before initiation of project, consultation with environmental experts and environmental protection and bio-engineering during construction phase 	<ul style="list-style-type: none"> IEE completed before initiation of project Permission and approval of tree cutting from cabinet and DoF obtained Environmental expert consultation and environmental team in field

Annex-2: Environmental Compliance Status with Loan and Grant Covenants

Schedule	Para No	Description	Compliance Status	Type	Responsibility
5	17	The Beneficiary shall ensure, and cause of NEA to ensure that preparation, design, construction, implementation, operation and decommissioning of the project, the subprojects and all project facilities comply with (a) all applicable laws and regulations of the beneficiary relating to environment, health and safety; (b) the Environmental Safeguards; and (c) all measures and requirements set forth in the IEE, the EMP and any corrective of preventative actions set forth in a Safeguards Monitoring report.	Complied with:		NEA, Contractor
5	18	The Beneficiary's environmental laws, regulations and procedures shall apply in addition to the Safeguards Policy Statement. The Beneficiary shall ensure through NEA that no construction work of any kind under the project (including any subprojects) shall be commenced until all applicable environmental clearances have been obtained and that all the above requirements are incorporated in the bidding documents and civil works contracts to ensure compliance.	Complied with:		NEA
5	19	The Beneficiary shall ensure, or cause NEA to ensure that all the land and all rights of way required for the subproject are made available to the works contractor in accordance with the schedule agreed under the related Works contract and all land acquisition and resettlement activities are implemented in compliance with (a) all applicable laws and regulations of the beneficiary relating to the land acquisition and involuntary resettlement; (b) the Involuntary Resettlement Safeguards; and (c) all the measures and requirements set forth in the relevant RP, and any corrective or preventive measures set forth in a Safeguards Monitoring report.	Complied with:		NEA
5	20	Without limiting the applicable of the Involuntary Resettlement Safeguards or the relevant RP, the Beneficiary shall ensure or case of NEA to ensure that no physical or economic displacement takes place in connection with the subprojects until: (a) compensation and other entitlements have been provided to the affected people in accordance with RP; and (b) a comprehensive income and livelihood restoration program have been established, where relevant, commensurate with the size, scale and significance of the project impacts, in accordance with RP	Complied with:		NEA
5	21	The Beneficiary shall ensure that the Project does not have any impact on Indigenous Peoples within the meaning of the Safeguard Policy Statement. In the event that the Project does not have any such impact, the Beneficiary shall ensure or case of NEA to ensure that preparation, design construction, implementation and operation of the relevant Subprojects comply with (a) all applicable laws and regulations of the Beneficiary relating to Indigenous peoples;(b) the Indigenous Peoples	Complied with:		NEA

Schedule	Para No	Description	Compliance Status	Type	Responsibility
		Safeguards; and (c) any corrective or preventative actions set forth in a safeguards Monitoring Report. Where impacts on IPs groups are identified a foreseen during the planning, preparation or construction phases of the project development, an IPP will be prepared, implemented and monitored in alignment with the SPS and the requirements set forth in PAM			
5	22	The Government shall make available or case of NEA to make available necessary budgetary and human resources to fully implement the EMP and RPs.	Complied with:		NEA
5	23	The Beneficiary and NEA shall ensure that Works contracts and bidding documents under the project include specific provisions requiring contractors to comply with all (a) applicable labor laws and core labor standards on (i) prohibition of child labor as defined in national legislation for construction and maintenance activities,(ii) equal pay for equal works of equal value regardless of gender ,ethnicity, or caste and (iii) elimination of forced labor, and (b) the requirement to disseminate information on sexually transmitted diseases including HIV/AIDS to employees and communities surrounding the Facility sites. Such contracts shall also include clauses of termination by NEA in case of any breach of the stated provisions by the contractors.	Complied with:		NEA
5	24	The Beneficiary shall ensure that NEA implements the GESI in a timely manner over the entire project implementation period, and that adequate resources are allocated for this purpose. In particular, the Beneficiary and NEA shall ensure that the targets stated in the GESI are achieved. NEA shall conduct training on GESI implementation for all staff involved in the project. The Beneficiary and NEA shall ensure that implementation of GESI is closely monitored, and progress is prepared to ADB in accordance with GESI and the PAM	Complied with:		NEA

Annex-3: Compliance Status in terms of General Conditions of Contract Clauses

Contract Clause	Sub-Clause	Specification	TKTL	
			Current Status	Action Taken By
Volume-1, Section-7, General Conditions of Contract				
22.2 Labor	22.2.1 Engagement of Staff and Labor	a. Except as otherwise stated in the specification, the Contractor shall make arrangements for the engagement of all staff and labor, local or otherwise, and for their payment, housing, feeding and transport.	Complied with:	
		b. The Contractor shall provide and employ on the Site in the installation of the Facilities such skilled, semi-skilled and unskilled labor as necessary for the proper and timely execution of the Contract. The Contractor is encouraged to use local labor that has the necessary skills.	Complied with:	
		c. The Contractor shall be responsible for obtaining all necessary permit (s) and/or visa (s) from the appropriate authorities for the entry of all labor and personnel to be employed on the Site into the country where the site is located. The employer will, if requested by the Contractor, use his best endeavors in a timely and expeditious manner to assist the Contractor in obtaining any local, state, and national or government permission required for bringing in the Contractor's personnel.	Complied with:	
		d. The Contractor shall at its own expense provide the means of repatriation to all of its and its sub contractor's personnel employed on the Contract at the Site to the place where they were recruited or to their domicile. It shall also provide suitable temporary maintenance of all such persons from the cessation of their employment on the Contract to the date programmed for their departure. In the event that the Contractor defaults in providing such means of transportation and temporary maintenance, the Employer may provide the same to such personnel and recover the cost of doing so from the Contractor.	Complied with:	
	22.2.2 Person in the Service of Employer	The contractor shall not recruit, or attempt to recruit, staff and labor from amongst the Employer's Personnel.	Complied with:	
	22.2.3 Labor Laws	a. The Contractor shall comply with all the relevant labor Laws applicable to the Contractor's Personnel, including Laws relating to their employment, health, safety, welfare, immigration and emigration, and shall allow them all their legal rights.	Complied with:	
		b. The contractors shall, in all times during the progress of the Contract use its best endeavors to prevent any unlawful, riotous or disorderly conduct or behavior by or amongst its employees and the labor of its Subcontractors.	Complied with:	
		c. The Contractor shall, in all dealings with its labor and the connected with the Contract, pay due regard to all recognized festivals, official holidays, religious or other customs and all local laws and regulations pertaining to the employment of labor.	Complied with:	
	22.2.4 Rates of Wages and	a. The contractor shall pay rates of wages and observe conditions of labor, which are not lower than those established for the trade or industry where the	Complied with:	

Contract Clause	Sub-Clause	Specification	TKTL	
			Current Status	Action Taken By
Volume-1, Section-7, General Conditions of Contract				
	Condition of Labor	work is carried out. If no established rates or conditions are applicable, the Contractor shall pay rates of wages and observe conditions which are not lower than the general level of wages and conditions observed locally by employers whose trade or industry is similar to that of the Contractor.		
		b. The Contractor shall inform the Contractor's Personnel about their liability to pay personal income taxes in the Country in respect of such of their salaries, wages and allowances as are chargeable under the Laws for the time being in force, and the Contractor shall perform such duties in regard to such deductions thereof as may be imposed on him by such laws.	Complied with:	
	22.2.5 Working Hours	a. No work shall be carried out on the Site on locally recognized days of rest, or outside the normal working hours stated in the SCC, unless i. Otherwise stated in the Contract, ii. The Project Manager gives consent, or, iii. The work is unavoidable or necessary for the protection of life or property or for the safety or the Works, in which case the Contractor shall immediately advise the Project Manager	Complied with:	
		b. If and when the contractor considers it necessary to carry out work at night or on public holidays so as to meet the Time for Completion and requests the Project Manager's consent thereto the Project Manager shall not unreasonably without such consent	Complied with:	
		c. This Sub-Clause shall not apply to any work which is customarily carried out by rotary or double-shifts.	Complied with:	
	22.2.6 Facilities for the Staffs and Labor	a. Except as otherwise stated in the Specification, the Contractor shall provide and maintain all necessary accommodation and welfare facilities for the Contractor's Personnel. The Contractor shall also provide facilities for the Employer's Personnel as stated in the Specification.	Complied with:	
		b. The Contractor shall not permit any of the Contractor's Personnel to maintain any temporary or permanent living quarters within the structures forming part of the Permanent Works.	Complied with:	
	22.2.7 Health and Safety	a. The Contractor shall at all times take all reasonable precautions to maintain the health and safety of the Contractor's Personnel. In collaboration with local health authorities, the Contractor shall ensure that medical staff, first aid facilities, sick bay and ambulance service are available at all times at the Site and at any accommodation for Contractors and Employer's Personnel and that suitable arrangements are made for all necessary welfare and hygiene requirements and for the prevention of epidemics.	Partially Complied with: Although the first aid kit has been provided it need to be replaced if losses, broken or medicine are expired	The contractor needs to ensure the availability of properly dated medicine in safety box.
		b. The Contractor shall appoint an accident prevention officer at the site, responsible for maintaining safety and protection against accidents. This person shall be qualified for this responsibility, and shall have the authority to issue instructions and take protective measures to prevent accidents.	Complied with:	

Contract Clause	Sub-Clause	Specification	TKTL	
			Current Status	Action Taken By
Volume-1, Section-7, General Conditions of Contract				
		Throughout the performance of the Contract, the Contractor shall provide whatever is required by this person to exercise this responsibility and authority.		
		c. The Contractor shall send, to the Project Manager, details of any accident as soon as practicable after its occurrence. The Contractor shall maintain records and make reports concerning health, safety and welfare of persons, and damage to property, as the Project Manager may reasonably require.	Complied with:	
	22.2.8 Funeral Arrangement	In the event of the death of any of the Contractor's personnel or accompanying members of their families, the Contractor shall be responsible for making the appropriate arrangements for their return or burial, unless otherwise specified in the SCC.	Complied with:	
	22.2.9 Record of the Contractor's Personnel	The Contractor shall keep accurate records of the Contractor's personnel on the Site and the names, ages, genders, hours worked and wages paid to all workers. These records shall be summarized on a monthly basis in a form approved by the Project Manager and shall be available for inspection by the Project Manager. Until the Contractor has completed all work.	Complied with:	
	22.2.10 Supply of Foodstuffs	The Contractor shall arrange for the provision of a sufficient supply of suitable food as may be stated in the Specification at reasonable prices for the Contractor's Personnel for the purposes of or in connection with Contract.	Complied with:	
	22.2.11 Supply of Water	The Contractor shall, having regard to local conditions, provide on the Site an adequate supply of drinking and other water for the use of the Contractor's Personnel.	Complied with:	
	22.2.12 Measures against Insect and Pest Nuisance	The Contractor shall at all times take the necessary precautions to protect the Contractor's Personnel employed on the Site from insect and pest nuisance, and to reduce their danger to health. The Contractor shall comply with all the regulations of the local health authorities, including use of appropriate insecticide.	Complied with:	
	22.2.13 Alcoholic Liquor or Drugs	The Contractor shall not, otherwise than in accordance with the Laws of the Country, import, sell, give barter or otherwise dispose of any alcoholic liquor or drugs, or permit or allow importation, sale, gift barter or disposal by Contractor's Personnel.	Complied with:	
	22.2.14 Arms and Ammunition	The Contractor shall not give, barter or otherwise dispose of, of any person, any arms or ammunition of any kind, or allow Contractor's Personnel to do so.	Complied with:	
	22.2.15 Prohibition of All Forms of Forced or Compulsory Labor	The Contractor shall not employ "forced or compulsory labor" in any form "Forced or compulsory labor" consists of all work or service, not voluntarily performed, that is extracted from an individual under threat of force or penalty.	Complied with:	

Contract Clause	Sub-Clause	Specification	TKTL	
			Current Status	Action Taken By
Volume-1, Section-7, General Conditions of Contract				
	22.2.16 Prohibition or Harmful Child Labor	The Contractor shall not employ any child to perform any work that is economically exploitative, or is likely to be hazardous to, or to interfere with, the child's education, or to be harmful to the child's health or physical, mental, Spiritual, moral, or social development.	Complied with:	
33. Loss of or Damage to Property; Accident or injury to Workers; Indemnification:	33.1	Subject to GCC Sub-Clause 33.3, the Contractor shall indemnify and hold harmless the Employer and its employees and officers from and against any and all suits, actions or administrative proceedings, claims, demands, losses, damages, costs, and expenses of whatsoever nature, including attorney's fees and expenses, in respect of the death or injury of any person or loss of or damage to any property other than the Facilities whether accepted or not, arising in connection with the supply and installation of the Facilities and by reason of the negligence of the Contractor or its Subcontractors, or their employees, officers or agents, except any injury, death or property damage caused by the negligence of the Employer, its contractors, employees, officers or agents.	Complied with:	
34. Insurance	34.1 (c)Third Party Liability Insurance:	Covering bodily injury or death suffered by third parties including the Employer's personnel, and loss of or damage to property occurring in connection with the supply and installation of the Facilities.	Complied with:	
	34.1 (e) Workers' Compensation:	In accordance with the statutory requirements applicable in any country where the Contract or any part thereof is executed.	Complied with:	
38. War Risks	38.2	Notwithstanding anything contained in the Contract, the Contractor shall have no liability whatsoever for or with respect to a) Destruction of or damage to Facilities, Plant, or any part thereof; b) Destruction of or damage to property of the Employer or any third party; or c) Injury or loss of life If such destruction, damage, injury or loss of life is caused by any War Risks, and the Employer shall indemnify and hold the Contractor harmless from and against any and all claims, liabilities, actions, lawsuits, damages, costs, charges or expenses arising in consequence of or in connection with the same.	Complied with:	

Annex-4: Compliance Status in terms of Special Conditions of Contract Clauses

Contract Clause	Sub-Clause	Specification	TKTL	
			Current Status	Action Taken By
Volume-1, Section-8, Special Conditions of Contract				
22.2 Labor	22.2.1 Engagement of Staff and Labor	a) The Contractor shall comply with (i) the measures and requirements set forth in the resettlement plan to the extent it concerns impacts on affected people during construction; and (ii) any corrective or preventive actions set out in safeguards monitoring reports that the Employer will prepare from time to time to monitor implementation of the resettlement plan. The Contractor shall allocate a budget for compliance with these measures, requirements and actions.	Complied with:	
	22.2.3 Labor Laws	d) The Contractor shall not make employment decisions based upon personal characteristics unrelated to job requirements. The Contractor shall base the employment relationship upon equal opportunity and fair treatment, and shall not discriminate with respect to aspects of the employment relationship, including recruitment and hiring, compensation (including wages and benefits), working conditions and terms of employment or retirement, and discipline. The Contractor shall provide equal wages and benefits to men and women for work of equal value or type.	Complied with:	
	22.2.4 Rates of wages and Conditions of Labor	c) The Contractor shall follow all applicable labor laws of Nepal. The Contractor shall i. Not use children as labor;	Complied with:	
		ii. Follow legally mandated provisions of labor, health, safety, sanitation, and welfare and working conditions; and	Partially Complied with: Contractor was unable to comply with minimum PPE's requirements, timely health checkup, sanitary working environment and their accommodation standards.	Field Safeguard Officers - Contractor was frequently awakened for the issues.
		iii. Take steps to ensure priority employment for female headed households. Breach of these provisions by the Contractor shall cause termination of the contract.	Not Complied with: No any local women labor has shown any interest for work	Contractor was advised to hire local labors, when needed.
	22.2.7 Health and Safety	d) The Contractor shall throughout the contract (including the Defect Liability Period): (i) Conduct Information, Education and Consultation Communication (IEC) campaigns, at least every other month, addressed to all the Site staff and labor (including all the Contractor's employees, all Sub-	Partially Complied with:	The contractors are advised to disseminate information and

Contract Clause	Sub-Clause	Specification	TKTL	
			Current Status	Action Taken By
Volume-1, Section-8, Special Conditions of Contract				
		Contractors and Employer's and Project Manager's' employees, and all truck drivers and crew making deliveries to site for construction activities) and to the immediate local communities, concerning the risks, dangers and impact, and appropriate avoidance behavior with respect to of Sexually Transmitted Diseases (STD)—or Sexually Transmitted Infections (STI) in general and HIV/AIDS in particular;		conduct campaigns.
		(ii) Provide male or female condoms for all Site staff and labor as appropriate; and	Complied with:	
		(iii) Provide for STI and HIV/AIDS screening, diagnosis, counseling and referral to a dedicated national STI and HIV/AIDS program, (unless otherwise agreed) of all Site staff and labor. The Contractor shall include in the program to be submitted for the execution of the Facilities under Sub-Clause 18.2 an alleviation program for Site staff and labor and their families in respect of Sexually Transmitted Infections (STI) and Sexually Transmitted Diseases (STD) including HIV/AIDS. The STI, STD and HIV/AIDS alleviation program shall indicate when, how and at what cost the Contractor plans to satisfy the requirements of this Sub-Clause and the related specification. For each component, the program shall detail the resources to be provided or utilized and any related sub-contracting proposed. The program shall also include provision of a detailed cost estimate with supporting documentation. Payment to the Contractor for preparation and implementation this program shall not exceed the Provisional Sum dedicated for this purpose.	Partially Complied with:	The contractors are advised to conduct program as per the contract clause.
		(iv) The Contractor shall disseminate information on the risks of socially and sexually transmitted diseases, including HIV/AIDS and malaria, to its employees during Project implementation and shall implement the HIV/AIDS and Human Trafficking Prevention and Sensitization Program among its employees for the duration of the Contract.	Complied with:	
	22.2.16 Prohibition of Harmful Child Labor	"Child" means a child below the statutory minimum age specified under applicable national, provincial or local law of Nepal.	Complied with:	
	46.	• The Contractor shall comply with all applicable national, provincial, and local environmental laws and regulations.	Complied with:	
		• The Contractor shall (a) establish an operational system for managing environmental impacts, (b) carry out all of the monitoring and mitigation measures set forth in the Initial Environmental Examination ("IEE") and Environmental Management Plan ("EMP") and (c) allocate the budget required to ensure that such measures are carried out. The Contractor shall submit semi-annual reports on the carrying out of such measures to the Employer.	Complied with:	

Contract Clause	Sub-Clause	Specification	TKTL	
			Current Status	Action Taken By
Volume-1, Section-8, Special Conditions of Contract				
		<ul style="list-style-type: none">• More particularly, the Contractor shall comply with (i) the measures and requirements set forth in the IEE and the EMP and (ii) any corrective or preventative actions set out in safeguards monitoring reports that the Employer will prepare from time to time to monitor implementation of the IEE and the EMP.	Complied with:	
		<ul style="list-style-type: none">• The Contractor shall allocate a budget for compliance with these measures, requirements and actions.	Complied with:	

Annex- 5: Environmental Safeguard Planning Status

S. N.	Name of Project / Subproject	Environmental screening is carried out? (Yes or No)	Environment category of the project / subproject (A/B/C/FI)	EIA/IEE/DDR with EMP is prepared (Yes/No)	ADB approved EIA/IEE with EMP (Yes / Under Review / Not Yet Due/Over Due)	Government approved EIA/IEE with EMP (Yes / Under Review / Not Yet Submitted)	Safeguard monitoring and coordination mechanism established (Yes/No)	GRC is established (Yes/No)	Automated safeguard monitoring system customized (Yes/No)	EMP cost in approved document is included in BOQ as an individual item (Yes/No)	Remarks
A. Tamakoshi – Kathmandu 220/400kV Transmission Line Project (TKTLP) – ETESIP											
1.	New Khimti-Barhabise 220/400 kV TL section	Yes	B	Yes	Yes	Yes	Yes	Yes (14- GRCs formed till this reporting period)	Yes	Yes	
2.	Barhabise-Changunarayan 220/400 kV TL section	Yes	B	Yes	Yes	Yes	Yes	Yes (22- GRCs formed till this reporting period)	Yes	Yes	
Note: EIA- Environmental Impact Assessment; IEE- Initial Environmental Examination; DDR- Due Diligence Report; EMP- Environmental Management Plan; GRC- Grievance Redress Committee; BOQ- Bill of Quantity											

(Source: Field visit)

Annex- 6 : Compliance Monitoring Status of Safety Facilities available to Labors

S.N.	Project Components	Availability of Safety Kits						Presence/ Absence Status of Other Facilities			
		Helmet	Boots/ Shoes	Gloves	Belts	Glass	Mask	First Aid Kit	Toilet	Drinking Water facility	Child Labor
A.	Tamakoshi – Kathmandu 220/400kV Transmission Line Project (TKTLP) – ETESIP										
1.	New Khimti-Barhabise TL section	S	S	S (Partially complied)	S	NP	S	S	P	S	A
2.	Barhabise-Changunarayan TL section	S	S	S (Partially complied)	S	NP	S	S	P	S	A
Remarks: Safety shoes/gloves have been provided to the Contractor's personnel; however, they were found to be used partially during the monitoring. NA*- No workers are present Action: Safety shoes/gloves and mask, glass need to wear during the work time and same is notified during the monitoring to the worker, supervisor of contractor and project too. Note *: <i>S: Satisfactory, NA: Not applicable, U: Unsatisfactory, NP: Not Provided, P: Present, A: Absent</i>											

Annex-7: Safety Assurance as per the Contractor's Plan

SN	Activity	Current Status	Action Taken By
I. Tamakoshi – Kathmandu 220/400 kV Transmission Line (TKTL) – ETESIP			
1. New Khimti – Barhabise TL section (Package I)			
A. Health Plan			
1.	EHS officer shall conduct safety training programs on different topics on regular basis	Complied with:	
2.	The significance of personal protective equipment shall be impressed up on the workmen and their use ensured by all concerned.	Complied with:	
3.	Safety induction programs shall be conducted for the new workmen and refresher programs for the existing gangs on routine basis.	Complied with:	
4.	In case of accident and emergency, safety personnel and first aider should be responsible for evacuation and first aid treatment	Complied with:	
5.	Safe drinking water facilities with proper storage and kept clean and free from contamination	Complied with:	
6.	Mitigation measures shall be adopted during the work producing 'Criteria Air Pollutants'.	Complied with:	
7.	A record of all hazardous materials will be maintained and updated, EHS officer must train personnel in the use of MSDS ensuring Employees are fully conversant with them.	Complied with:	
8.	Only trained and experienced personnel will be allowed to handle hazardous substance.	Complied with:	
B. Personal Protective Equipment (PPE) “Safety starts with me; I am responsible for safety”			
PPE Matrix			
Activity	Workmen Category	PPEs Recommended	
Entry into work premises	All employees and workers	Safety helmet, safety shoes and Reflective jacket	Complied with:
Excavation and Foundation work	All employees and workers	Gum boots and hand gloves of rubber	Complied with:
Working at height above 1.8 m	All employees and workers	Safety harness	Complied with:
Tower Erection	Riggers	Hand gloves, double lanyard safety belt	Complied with:
Stringing	Stringing team	Helmet, boot, gloves and reflective jacket	
DG operators and Noise prone area	Operators	Ear muffler	Complied with:
Scaffolding	Scaffolders	Cotton hand gloves	
Electrical maintenance and repairs	Electricians	HV rubber hand gloves	Complied with:
Welding and Gas Cutting	Welders and cutters	Leather gloves, apron and face shield with tinted lens	Complied with:
Shut down of power line	Workmen	Leather gloves, boots, Reflective jacket and Helmet	Complied with:
Hand tools	Workmen	Safety glasses and gloves	Complied with:
Power tools	Workmen	Safety glasses and gloves	Complied with:
Concrete Batching plant	Operators and loaders	Nose mask	Complied with:
Quarry work	Loaders	Hand gloves, safety shoes	Complied with:
C. Checklist for Tower Foundation			

SN	Activity	Current Status	Action Taken By
1.	Excavated area will be appropriately identified with signs, warnings and barricades.	Complied with:	
2.	Work area shall be protected from excavated or other materials or equipment that could pose a hazard by falling or rolling into excavated pit. Concrete mixer machine should be placed 5 m away from the excavated pit's edge.	Complied with:	
3.	Rotating parts of the concrete mixer machine should be covered and fenced.	Complied with:	
4.	Connecting chute should be tied and supported properly to avoid its fall at the time of concreting.	Complied with:	
5.	Heavy construction equipment should be kept away from the edge of the pit at least 2 meters.	Complied with:	
6.	The slope or protective system should be constructed sufficiently to accommodate the safe handling of material adjacent to the utility structure.	Complied with:	
7.	A stairway, ladder or ramp shall be used as a means of access or egress in pit excavations that are four feet or more depth.	Complied with:	
8.	Employees are protected from loose soil or rock falling from excavation face.	Complied with:	
9.	Emergency rescue equipment such as a safety harness and line shall be readily available where hazardous atmospheric conditions exist or may reasonably be expected to develop during work in an excavation.	Complied with:	
10.	Gumboots, hand gloves and safety helmet and other safety equipment should be during the work.	Complied with:	
11.	First Aid box, first-aid trained personnel and first aid medicine should be available at site.	Complied with:	
12.	Unauthorized persons should not be allowed to enter in to the hazard zone, keep working area clear from obstruction.	Complied with:	
D. Checklist for Tower Erection			
1.	All construction personnel must wear minimum requirements of PPE as Helmet, safety shoes, hand gloves etc.	Complied with:	
2.	Personnel working or traveling near the unprotected/open sided must use safety belt with its lanyard attached to any permanent structure, fall protection appliances shall be worn while erecting structure	Complied with:	
3.	No work should be allowed by standing over wooden boxes, empty barrels and other make shift arrangements	Complied with:	
4.	Ensure whether any live lines (HT or LT) are not running in the vicinity of 10 m of the pole to be erected, if "YES" the shutdown procedure is to be adopted along with safe procedures	Complied with:	
5.	Check back filling done and housekeeping should be maintained at site prior to erection activity	Complied with:	
6.	All fitters in work at height should bind the spanner to hand with rope to avoid fall of tools, proper size spanner should be use	Complied with:	
7.	Ensure incomplete tower has not left behind, do not leave any bolt hole empty, use step bolt for climbing, barricade the working area	Complied with:	
8.	Ensure sufficient numbers of people are made available while lifting the assembled structure/heavy loads and also avoiding use of single sheave pulley, ensure ropes/wires are secured properly	Complied with:	
9.	Before commencement of work, safety belt/harness, ropes and pulleys should be checked for quality	Complied with:	
10.	Ensure the availability of proper communication facilities i.e., walky-talky or mobile phone, first aid facility, drinking water, emergency vehicle with appropriate aid	Complied with:	

SN	Activity	Current Status	Action Taken By
11.	Ensure the trained workers to adopt safe working method and safe movement technique on tower i.e., proper use of spanner, tightening method and members assembling or joining method	Complied with:	
12.	Ensure the firmness of crowbar for loose soil, sandy soil hard surface	Complied with:	
13.	Ensure the tower erection not allowed in case of heavy wind, storm, lightning, rain, too hot, too cold weather.	Complied with:	
E. Checklist for Conductor Stringing			
	<i>The work has not been started yet.</i>		
F. Checklist for General (General points common for all activities during Excavation, Casting of foundation, Erection of tower and stringing of conductor)			
1.	Availability of required quantity of PPEs	Complied with:	
2.	Availability of First Aid box with required medicines and fire extinguishers at site	Partially complied:	The contractor has been advised to make available of a fire extinguisher
3.	Availability of work instruction register at site	Complied with:	
4.	Ensure of labors aware of their job and safety requirements	Complied with:	
5.	Ensure safety personnel and first aider are deployed in the site	Complied with:	
6.	Availability of rescue vehicle to nearby hospital/doctor in case of emergency	Complied with:	
7.	All driver and plant operators are holding valid driving license	Complied with:	
2. Barhabise – Changunarayan TL section (Package II)			
A. Health Plan			
1.	Occupational Health & Hygiene Inspection, frequency shall be minimum once in a month	Partially Complied with:	Contractor has been advised to follow the plan strictly
2.	Health Campaign, at least once in six months	Complied with:	Contractor has been advised to follow the plan strictly
3.	Drinking water, available in accommodation facilities with clearly marked "Drinking Water Only", have tight fitting lids and be equipped with a tap, kept clean and free of contamination	Complied with:	
4.	Pest Control, EHS engineer disseminated the knowledge of handling, transporting, precautionary measures to be adopted for the chemical	Complied with:	
5.	First Aid, provided in prominent places, evacuation & action plan in case of accident, contingency plan formulated after the mobilization, only first aider will provide the first aid treatment	Complied with:	
6.	Hazardous Materials, information contained in the MSDS shall be incorporated, supervised by a qualified person	Complied with:	
B. Personnel Protective Equipment (PPE) "NO PPE, NO ENTRY"			
PPE MATRIX		Complied with: (but is not in satisfactory condition, Contractor's H&S Officer has been advised for proper implementation and regulation)	
Activity	Workmen Category	PPEs Recommended	
General-Entry into work premises	All Employees	Safety Helmet & Safety Shoe	Partially Complied with:
Working at Height/ Tower- More than 2.0 meters	All	Safety belt with Double lanyard	Complied with:

SN	Activity			Current Status	Action Taken By
	Involved with cement lime and line mortars	All	Gum Boots & Rubber Hand Gloves	Partially Complied with:	
	Breaking of ceramics & Agglomerate materials	Chippers	Eye protection – Clear Goggles	Complied with:	
	Welding & Gas Cutting	Welders & Cutters	Leather gloves, Safety shoe, Welding shield with proper number	Complied with:	
	Working with slush	Unskilled & Excavation gang	Gum Boots	Complied with:	
	Forming and Making shuttering materials	Carpenters and Wood workers	Face shield & Nose mask	Complied with:	
	Rebars handling & working	Bar benders	Cotton/Leather Gloves	Complied with:	
	Scaffolding	Scaffolders	Cotton hand gloves	Complied with:	
	Painting	Painters	Clear goggles		Construction not begun
	Rock Drilling	Rock Drillers	Nose mask of appropriate type	Not Complied with:	
	Erection	Riggers	Hand gloves, Double Lanyard Safety Belt	Complied with:	
	DG Operators & Other Noise prone areas	Operators	Ear muff	Complied with:	
	Electrical Maintenance & Repairs	Electricians	HV Rubber hand gloves		Construction not begun
	Concrete Batching Plant	Operators & Loaders	Nose mask	Complied with:	
	Handling of Boulders with sharp edges (Quarry)	Loaders	Hand gloves, Safety shoes	Complied with:	
C. Checklist for Tower Foundation					
1.	Check construction materials are stacked at safe place and also does not cause any danger. (Away from pit 105m or half the depth of the pit, whichever is more)			Complied with:	
2.	Check arrangement of illumination at construction site. (If required)			Complied with:	
3.	Ensure life saver arrangements has been made during construction of well foundation in river bed. (When necessary)			Complied with:	
4.	Check that the concreting mixer machine is placed at safe place. (Not very near to pit)			Complied with:	
5.	Check proper/adequate arrangement is made for extension of electricity supply. (Proper size of cable, use of fuse, no loose connection for dewatering pumps/illumination/electric compressors active applicable)			Complied with:	
6.	Ensure lying of temporary cable used during construction should not cause any danger for electrocution of workmen.			Complied with:	
7.	Inspection of excavation shall be made by a competent person every day. In case possible cave in/slide in is apparent, all working in the excavation shall cease until the necessary precautions have been taken to safeguard the possible cave-in/slide.			Complied with:	
8.	Jacks and vertical supports shall be positioned in such a manner that the vertical loads are distributed equally and do not exceed the capacity of the jacks and the jacks are placed away from pit edge etc.			Complied with:	

SN	Activity	Current Status	Action Taken By
9.	Proper jacking arrangement is made to take the entire load of template.	Complied with:	
10.	In case of long template in stub setting more jacks has been provided and to check that the jacks are placed on levelled and hard surface to avoid the unbalancing and fallen.	Complied with:	
11.	Wire mesh rolls shall be secured in order to prevent dangerous recoiling action.	Complied with:	
12.	Lone worker should not be allowed to work in the excavated area.	Complied with:	
13.	Check that sufficient strong ladder of suitable length is available for ingress/outgress of persons in the pit.	Complied with:	
D. Checklist for Tower Erection			
1.	Check proper communication facility is available at site during tower erection (if required)	Complied with:	
2.	Check damages or uneven settlement of foundation.	Complied with:	
3.	Ensure the derrick used before tower erection has been checked for adequate strength/ size. Ensure for copy of test certificate for all lifting machines and tackles.	Complied with:	
4.	Ensure that the pulleys used before tower erection has been checked for adequate strength / proper size (diameter), also in case of open type pulleys proper locking arrangements like providing of safety pin is made, Ensure for copy of test certificate for all lifting machines and tackles.	Complied with:	
5.	Ensure the ropes used before tower erection has been checked for adequate strength /physical condition (free from break of strands and knots etc.)	Complied with:	
6.	Check that the lifting tools and tackles i.e., Winch machine, Chain Pulley Block, Trifor, D-Shackle etc. are in healthy condition and has been tested periodically. (Attach a copy of test certificate)	Complied with:	
7.	Ensure permission has been obtained from Aviation Authority for erection of special towers. (Where Necessary)	Complied with:	
8.	Ensure permission has been obtained from Aviation Authority for erection of special towers which comes in the vicinity of flying zone (Where necessary)	Complied with:	
9.	Check that the safety measures have been taken before undertaking for the road /Rail / River Crossing jobs involving likewise stretches.	Complied with:	
10.	For rail or road crossing check whether written working plan is available at site with specific reference to safety eg. Local earthlings, skilled and experienced manpower, proper T&P, strength and height of scaffolding to maintain the required clearance etc.	Complied with:	
11.	Ensure that all the members and proper size of nuts and bolts of lower section are fitted properly before erection of the upper section of tower is taken up.	Complied with:	
12.	Check that the anti-climbing devices are provided in the tower after erection job.	Complied with:	
13.	Check that the danger plates have been provided.	Complied with:	
14.	Check only erection team members are allowed to stand near the tower while the erection is in progress and should wear the safety helmet / Safety shoes.	Complied with:	
15.	Working area of the tower has been demarcated during erection.	Complied with:	
16.	Check proper guying arrangement has been made. And also, to see that proper size of the crowbars has been used which has been fixed at hard surface in case of sandy or loose soil.	Complied with:	
17.	Check that the proper arrangement is made while lifting tower members and fixing them at height i.e. proper size and strength of the hook used for lifting the tower members.	Complied with:	
18.	Check sufficient members of guys are made while lifting the assembled cross arm and also avoiding use of single sheave pulleys while lifting the assembled cross arm / heavy load.	Complied with:	

SN	Activity	Current Status	Action Taken By
E. Checklist for Conductor Stringing			
1.	All drivers and plant operators are holding the valid driving license.	Complied with:	
2.	Check the permit has been obtained from the competent Authority for stringing of conductor while crossing through Road /Rail /River / Vulnerable areas etc. (Where necessary)	Complied with:	
3.	Check that required painting has been made on tower falling in the vicinity of aviation zones. (Where necessary)	NA	
4.	Check that all the safety measures have been taken during string of conductor crossing the EHV / HV / LT lines (Earthing of existing)	Complied with:	
5.	Ensure proper size of nuts and bolts are rigidly tightened and punching /tacking /tack welding is done in towers before undertaking stringing job.	Complied with:	
6.	Ensure proper scaffolding arrangements made during stringing of conductor (While road crossing /power line crossing etc.	Complied with:	
7.	Ensure that all members are fitted in tower before undertaking conductor stringing work.	Complied with:	
8.	Check that the back filling of the foundation has been done as per specifications.	Complied with:	
9.	Ensure that the discharge rod is electrically tested before use,	Complied with:	
10.	Stringing machine / Tension puller machine is properly earthed.	Complied with:	
11.	Check the brake arrangement of the TSE Machines is working.	Complied with:	
12.	Ensure that the pulleys used before conductor stringing is been checked for adequate strength /proper size (diameter) also in case of open type pulleys proper locking arrangements like providing of safety pin is made. Ensure for copy of test certificate for all the lifting machines and tackles.	Complied with:	
13.	Ensure the ropes used before conductor stringing has been checked for adequate strength /physical condition (Free from break of strands and knots etc.,)	Complied with:	
14.	Check that the lifting tools and tackles i. e. Winch machine, Chain pulley Block, Trifor, D-Shackle etc. are in healthy condition and has been tested periodically. (Attach a copy of test certificate)	Complied with:	
15.	Check for the brake arrangement of the Drum reel of conductor during laying / paying out of conductor.	Complied with:	
16.	Check proper communication facility is available at site during stringing of conductor (if required)	Complied with:	
17.	Whether tower has been permanently earthed.	Complied with:	
18.	Check that Sag Board is provided at two locations.	Complied with:	
19.	Check that the Sag Board arrangement is made by the experienced / trained persons.	Complied with:	
20.	Check approved Sag tension chart is available and followed at site.	Complied with:	
21.	While clamping of conductor / Earth Wire to be done, check for earthing.	Complied with:	
22.	Ensure sending signal to puller to stop when last layer of conductor /EW being pulled.	Complied with:	
23.	Check tension applied on the dynamometer dial and check values with approved data.	Complied with:	
24.	Before stringing starts check that the villagers do not come underneath the job of the concerned section	Complied with:	
25.	Only nylon or polypropylene ropes should be used during conductor stringing gin vicinity of live overhead lines.	Complied with:	
26.	Ensure that PTW has been taken from the concerned authority.	Complied with:	
27.	Ensure that Winch, Pulleys etc. are properly earthed.	Complied with:	

SN	Activity	Current Status	Action Taken By
28.	For LT lines, whether special persons are posted at each point of isolation till return of permit (PTW)	Complied with:	
29.	Whether the network of LT lines has been thoroughly checked and precautions taken Against inadvertent charging.	Complied with:	
30.	Check that proper arrangement is made / available for development and use of portable Earthing and Short-circuiting Devices which can be engaged and disengaged to and from the LT lines, keeping away from LT lines until all operations on the same are completed and all men and materials are removed from LT lines.	Complied with:	
31.	Check the provision and proper positioning for the guying and back staying (Where necessary)	Complied with:	
32.	Check demarcation of feeder is done for D /C Line	Complied with:	
33.	Ensure that all the insulator strings are thoroughly checked for availability and proper fixing of cotter / spilt pins before hoisting the same.	Complied with:	
F. Checklist for General (General points common for all activities during Excavation, casting of foundation, Erection of tower and stringing of conductor)			
1.	Check whether the contractor has procured required quantity of PPE considering maximum numbers of erection gangs deployed at site.	Partially Complied with:	The contractor has been advised to provide enough PPEs for all labors.
2.	Supervisors/Workmen have been provided with required healthy PPEs like (Safety helmet/ Safety shoes/ Gum boots as applicable)	Partially Complied with:	
3.	Availability of First Aid box with required medicines at site.	Partially Complied with:	
4.	Instruction register is available at site.	Complied with:	
5.	Ensure Supervisor/ Gang leader always issues instruction to the workmen before start of work.	Complied with:	
6.	All driver and plant operators are holding valid driving license.	Complied with:	
7.	Check the vehicle for rescue is available at site.	Complied with:	
8.	Ensure engaged labor are aware of the job.	Complied with:	
9.	Check that the unskilled laborers are not engaged in skilled job.	Complied with:	
10.	Ensure supervisor/ workmen engaged in the field are aware of First Aid Techniques (such as in case of Electric shock, fall from the height, Snake bite and the person rescued from buried under the debris etc)	Complied with:	
11.	Check for nearby Hospital/ Doctor in case of emergencies arises.	Complied with:	
12.	While transporting heavy consignment of conductor or earth wire drums from central stores to site by the use of Cranes, Trucks, Tractors, the safety aspect for construction and failure of brake system of moving machinery is to be checked.	Complied with:	
13.	At least one dry powder type of portable fire extinguisher shall be provided especially where explosive or blasting agents are used for excavation.	Complied with:	
14.	Check the competence (Qualification /experience) of supervisor / gang leader of contractor.	Complied with:	

Annex-8: Status of Environmental Compliance

S.N.	Name of Subproject	Compliance to Environmental Management Plan*												Grievances			Remarks				
		Physical				Biological		Socio-economic													
		Spoil Management compliance in %)**	Landslide protection with Bio-engineering (compliance in %)**	Drainage Management (compliance in %)**	Others as per EMP (specify)	Compensatory Plantation		Firewood is used for cooking and heating (Y/N)	Others as per EMP (specify)	Occupational Health and Safety			Community structures are compensated / reconstructed (progress in % of total estimated work)***								
						Target (Nos.)	Replanted (Nos.)														
									Safety Gears are sufficient and used (Y/N)	Laborers are insured (Y/N)	Labor and work camps are healthy and have sanitary facilities (Y/N)	Community Structure 1	Community Structure 2	Others as per EMP (specify)	No. of grievances documented	No of grievances resolved	No of grievances under processing	Corrective Action Plans are prepared and implemented (Y/N)	Env compliance reporting is maintained (Y/N)		
1.	New Khimti-Barhabise 200/400 kV TL	90	100	100		N	N	N		Y	Y (Only in working hours)	Y				4	2	2	Y	Y	Spoils are stored safely and used for back fill later.
2.	Barhabise – Changunarayan 220/400 kV TL	85	70	90		N	N	N	0	Y	Y (80%)					8	4	4	Y	Y	Spoils are dumped inside tower pad and refilled back to pit.

Note: * Add field as guided by EMP in EIA/IEE/DDR; ** Write percentage of compliance in a scale of 100%; *** mention type of community structures

Annex- 9 Impact Mitigation Compliance on Environmental Issues

S.N	Construction Stage and Impact	Mitigation Measures	Tamakoshi–Kathmandu 220/400 kV TL	
			New Khimti -Barhabise TL section	Barhabise - Changunarayan TL section
1	Surveys, Alternative Analysis, enumeration of trees.	Better Route Alignment	Complied with:	Complied with:
2	Adverse effect on topography from development of Quarry Site and stacking of construction materials	Restoration of exposed areas	Complied with:	Complied with:
3	Tagging of Trees and clearance causing erosion, effect other utility lines, wildlife habitat and corridors during clearing of Right of Way (RoW)	Compensation, restoration and consultation with forest stakeholders on wildlife habitat and corridors	Complied with:	Complied with:
4	Environmental Investigations	Soil investigations to avoid adverse effects on project	Complied with:	Complied with:
5	Pollution of aquatic environment and adverse impact as poaching and felling of tree from temporary workers camp	Adequate cleaning facilities, toilets with soak pits and use of liquefied petroleum gas. Ensure the camp site is cleaned and restored while relocating. Solid waste disposal on pits minimum 500m away from water sources.	Complied with:	Complied with:
6	Soil erosion, wastes and pollution temporarily from unloading of material, storage and workshop in local environment	Avoiding sensitive sites. Recyclable materials such as cement bags, plastics and scrap metals to be segregated and sold for recycling. While decomposable wastes to put in a pit and covered away from surrounding water sources.	Complied with:	Complied with:
7	Adverse impact on local aquatic environment, soil erosion and loss of agricultural land while pit marking and digging of foundation	Compensation, restoration of site and proper maintenance of vehicles used	Complied with:	Complied with:
8	Contamination of Surface and Ground Water, Soil Erosion while construction of foundation and revetment	Restoration of exposed areas, adequate maintenance of engines to prevent oil leakage. Sensitive Sites include AP 9, AP 11 and AP 12	Complied with:	Complied with:
9	Disturbance to existing utilities and population during erection process	Rerouting the utility lines, installation of warning signboards, traffic management and use of safety equipment or Personal Protective Equipment (PPE). Construction activities to be carried out during dry season when farming activities are minimal	Complied with:	Complied with:
10	Accidents at tower site and soil run off from exposed surface while installing earth wire or optical ground wire	PPE are worn and exposed surface are covered. Safe Distance are maintained from other power lines as well as power is temporarily cut off scaffolding is used in areas crossing rivers, roads, telecom lines, overhead power lines and other similar structure. The vegetation to be lopped to be quantified	Complied with:	Complied with:
11	Snapping of stringing blocks or loose hanging of wires and excessive lopping of vegetation while stringing, final sagging and tensioning earth wire as well as power conductor	Adequate tension is maintained scaffolding is used in areas crossing rivers, roads, telecom lines, overhead power lines and other similar structure. The vegetation to be lopped to be quantified	Construction has not begun yet	Complied with:

Annex- 10: Location wise Tree Cutting Status in Tower Footings of TKTLP

S N	District	Location		Name of Community Forest	Number of trees felled		Remarks
		Tower Foundation	RoW		Tower Foundation	RoW	
New Khimti – Barhabise TL section							
1.	Dolakha	AP 10/1		Paleko Sajheko Salkhoriya CF	67		
		AP 12/2		Bhyakure Dhokebhir CF	28		
		AP 16/1		Baluwa Bhumethan CF	50		
		AP 17/1		Khahare Bhadaure CF	22		
		AP 18/0			50		
		AP 21/0		Charnawati CF	102		
		AP 22/0			87		
		AP 24/1			92		
		AP 25/0		Sitakunda CF	41		
		AP 26/0			24		
		AP 36/0		Amale Kharka CF	22		
		AP 37/0		Kupri Salleri CF	41		
Barhabise – Lapsiphedhi TL section							
1	Sindhupalchowk	AP 13/1		Salghari CF	21		
		AP 13A/0			192		
		AP 19/0		Jure Thumka CF	215		
		AP 20/0		Devasthan CF	80		
		AP 21/0		Dharam Pani CF	50		
		AP 22/0		Falate Kalika CF	151		
		AP 23/0			82		
			AP 23/0 - AP 24/0	Falate Kalika CF,		407	
		AP 26/0		Chipchipe CF	15		
		AP 27/0		Rani Pokhari CF	52		
		AP 27/1			24		
		AP 34/0		Tamakhani CF	111		
		AP 36/0			46		
		AP 36/1		Rol Pakha CF	249		
		AP 36A/0			228		
		AP 37A/1		Teenpakhe CF	90		
		AP 38/0			31		
		AP 38/1		Thulitar CF	33		
		AP38/2			120		
2	Kavrepalanchowk	AP 46/0		Dhaitar Dundhe Pakha CF	128		
		AP 47/1		Nauledanda CF	271		
		AP 50/1		Government Managed Forest	51		
		AP 52/0		Batase CF	26		
Lapsiphedhi – Changunarayan TL section							

S N	District	Location		Name of Community Forest	Number of trees felled		Remarks
		Tower Foundation	RoW		Tower Foundation	RoW	
Total		34	1	23	2892	407	
		35			3299		

Annex-11: Meeting minutes regarding Updated IEE and route alignment

Date / /
 Page /

आज मिति २०८०/०५/०६ गते यस ताराकोशी-काठमाण्डौ २२०/८०० कै. मि. प्रसारण लाईन आयोजनाको, आयोजनाको तर्फबाट गणेश विद्या समितिको संयोजक तथा आयोजना प्रमुख श्री रामप्रसाद शर्माको अध्यक्षतामा देहायको उपस्थितिमा केही वसी गित्तुमुसुर गरियो।

उपस्थिति

श्री रामप्रसाद शर्मा (संयोजक तथा आयोजना प्रमुख)

श्री राजेन्द्र गुरुङ मास्टर

श्री विष्णु शर्मा

श्री सत्योदय ठकाल

श्री प्रकाश शर्मा

श्री सत्योदय शर्मा

श्री प्रदीप अधिकारी

श्री महेन्द्र महराज

श्री कृष्ण शर्मा

आमन्त्रित

श्री राजेन्द्र शर्मा (पदा अध्यक्ष, मन्थली न.पा. वडा नं. १३)

श्री बाबुराज शर्मा

श्री विष्णु शर्मा

श्री श्याम शर्मा

श्री प्रकाश शर्मा

श्री सत्योदय शर्मा

श्री प्रकाश शर्मा

श्री अमर शर्मा

श्री माधव शर्मा

श्री राजेन्द्र शर्मा

श्री विष्णु शर्मा

श्री श्याम शर्मा

श्री बाबुराज शर्मा

श्री विष्णु शर्मा

श्री श्याम शर्मा

श्री प्रकाश शर्मा

श्री सत्योदय शर्मा

श्री कृष्ण शर्मा

Date |
Page |

[Signature]

प्रभाव

१. Updated IEE सम्बन्धमा ।
२. प्रसारण लाइनको वैधानिक उपाय सम्बन्धमा ।

निर्णयहरू

१. प्रस्ताव नं १ माथी छलफल गर्दा Updated IEE सिफारिसहरू गरिएको भन्ने गुतासौलता उपलब्ध प्रमाण तथा दस्तावेजहरू प्रस्तुत गरी IEE तथा Updated IEE सिफारिसहरू नै गरिएको स्थानीय प्रभावित समुहहरूलाई प्रष्टमाउने ।
२. प्रस्ताव नं २ माथी छलफल गर्दा सुरक्षा/वालाहरूको तर्फबाट आएको रुट परिवर्तनको माग सम्बोधन गर्दा AP 2/0 र यो मस्य अगाडि राखिएको निर्माण प्रकृमा तथा अर्का अधिकृतको प्रकृमा आदि वरिदे रहेको, अधिकृत तथा प्राविधिक आगल्लै रुट परिवर्तन हुनवन्ने जानकारी गराउनेको साथ मन्थनी त.पा. ०८१ नं १२ र (मुआयना) निर्धारण गर्दा अर्का प्राप्ति ऐन २०२४ ले व्यवस्था गर्नु बमोजिमको प्रकृमाहरू अवलम्बन गरी निर्धारण गराउने पछि गर्ने निर्णय गरियो ।

[Signatures]

Annex-12: Minute of meeting with Mayor of Manthali Municipality regarding IEE/UlEE

Date /
Page /

आज मिति २०७८/११/०९ गतेका दिन नेपाल सरकारको लगानी तथा रक्षायामा
विकास बैंकको प्रभुता तथा अनुदान सहयोगमा नेपाल लिखित प्राधिकरण द्वारा
निर्माणका लागि तामाकोशी-काठमाण्डौ २२०/४०० के.मी. प्रसारण लाइन आयोजनाको
निर्माणको क्रममा रामेछाप जिल्ला, मन्थली नगरपालिकाको नगर प्रमुख
श्री रामेक्षा कुमार खन्नेत ज्यूको उपस्थितिमा देहाय बमोजिमको विषयमा
इलफत गरी निम्नानुसारको निर्णय गरियो ।

उपस्थिति

१. श्री रामेक्षा कुमार खन्नेत - नगर प्रमुख - मन्थली न.पा.
२. श्री राजेन्द्र चौहान - वडा अध्यक्ष - मन्थली न.पा. - वडा
३. ई. राजेन्द्र नाथन थापा - जे.वि.पा.
४. श्री वनराज काफ्ले - जे.वि.पा. - खासजनाको
५. श्री सरोज श्रेष्ठ - जे.वि.पा. - वतावरणविद्

प्रस्तावहरू:

१. तामाकोशी-काठमाण्डौ २२०/४०० के.मी. प्रसारण लाइन आयोजनाको
बारेमा र मन्थली न.पा. वडा सं. - वडा का आयोजना प्रभावितहरूबाट
आयोजना अनुमति कार्ड विस्तृत रूपमा इलफत गर्ने ।
२. समन्वय समिति स्थापना गर्ने ।

निर्णय: तामाकोशी-काठमाण्डौ २२०/४०० के.मी. प्रसारण लाइन आयोजनाको
बारेमा आयोजना सम्बन्धी विभिन्न कोषागतहरू, अर्थात् IEE, उपवेवले
IEE तथा अन्य कोषागतहरू प्रस्तुत गरी विस्तृत रूपमा जानकारी
गराइयो । साथै मन्थली न.पा. - वडा का आयोजना प्रभावितहरूबाट
IEE र उपवेवले IEE मा प्रस्तावित भूरीटल रहेको भन्ने अनुमति
लाई उक्त प्रस्तावहरूको बारेमा प्रष्टवाई कुनै पनि प्रस्तावित
भूरीटल रहेको बारे जानकारी गरियो ।

२. प्रभावित क्षेत्रका आयोजना प्रभावितहरू संग मिति २०७८/११/१२
गते मितिमा नै इलफत गरी समन्वय समिति चल्न पहल गर्ने
निर्णय गरियो ।

[Signatures]

PHOTOGRAPHS

A. New Khimti – Barhabise TL section

Plate 1: Meeting with PAFs and Ward Chair at Ramechhap regarding IEE and route alignment



Plate 2: Erected towers at Melung RM, Dolakha



Plate 3 and 4: Meeting with Mayor of Manthali Municipality, Ramechhap, Ward chair regarding issues of Ramechhap



Plate 5: Meeting with CFUG of Charnawati CF



Plate 6: Meeting at Manthali, Ramechhap regarding IEE/UIEE and compensation rate



Plate 7: Consultation with PAFs of AP 63/2, Sindhupalchowk



Plate 8: Consultation on rate of land with locals of Sindhupalchowk



Plate 9: A crevasse inspection by geologist, project team and ESMU team in tower footing of AP 62/0



Plate 10: Landslide at AP 62/0 though the geologist recommended safe, tower location at red square



Plate 11 and 12: GRC formation at Barhabise Municipality ward no.: 2 and 4



Plate 13: Meeting at Manthali, Ramechhap regarding IEE/UIEE and compensation rate



Plate 14: Meeting with DFO, Secretary of CFUG and contractors



Plate 15: Verification of land at Bhedpu, AP 8/2



Plate 16: pH meter for the test of drinking water of labor camp



Plate 17: Meeting at NEA Head Office with PAFs of Ramechhap



Plate 18: Work site field camp



Plate 19: Site inspection at AP 2/0 due to the demand of route alignment shift



Plate 20: Site inspection at AP 1/0 due to the demand of route alignment shift



Plate 21: Public consultation with PAFs in AP 9/0, Dolakha



Plate 22: Foundation work at AP 27/1



Plate 23: Survey at AP D/E, Ramechhap



Plate 24: Survey at AP 1/0, Ramechhap



Plate 25: Construction of gabion wall at AP 17/1



Plate 26: Construction of RRM wall at AP 17/1



Plate 27 and 28: GRC formation in Tripurasundari RM ward 2 and 4



Plate 29: Public consultation at AP 6/0



Plate 30: Tower erection at AP 49/1



Plate 31 and 32: First aid box and stretcher available at site



Plate 33: Safety instruction and signs at site



Plate 34: Safety instruction at site before initiation of work



Plate 35: Rewarding the best safety follower labor



Plate 36: Safety instruction at Safety booth of contractor

B. Barhabise – Changunarayan TL section

Plate 1 & 2: Land verification ongoing in Shankarapura Municipality



Plate 3 & 4: Land verification ongoing in Kageswori Manohara Municipality



Plate 5 & 6: Consultation with PAFs, Lapsiphedi – Changunarayan TL section



Plate 7: Land verification in Shankarapura M- 5



Plate 8: Erected tower AP 17/0



Plate 9: Consultation with Balephi Mayor



Plate 10: Consultation with PAFs in Lapsipedi



Plate 11: Monitoring visit by MD, NEA



Plate 12: Tower monitoring, AP 27/1



Plate 13: Project status briefing by ESMU to MD, NEA



Plate 14: Insulator inspection



Plate 15: Insulators before initiation of stringing



Plate 16: Insulators checking before initiation of stringing



Plate 17: Foundation work in progress, AP 37A/1



Plate 18: Stringing work in progress



Plate 19 & 20: EHS, quality and safety orientation in contractors safety month program



Plate 21: Award distribution/group photo in safety month program



Plate 22: Inspection of First Aid kit in site



Plate 23: Consultation with PAFs in Irkhu



Plate 24: Consultation with PAFs in Changunarayan