

ENVIRONMENTAL MONITORING REPORT

Semestral report (July - December 2019)

April 2021

VIET NAM: Water Sector Investment Program - Tranche 2

Buon Ma Thuot and Three Adjacent Districts Water Supply
Project - Dak Lak province

NOTES

This environmental monitoring report is a document of the borrower. The views expressed herein do not necessarily represent those of ADB's Board of Directors, Management, or staff, and may be preliminary in nature.

In preparing any country program or strategy, financing any project, or by making any designation of or reference to a particular territory or geographic area in this document, the Asian Development Bank does not intend to make any judgments as to the legal or other status of any territory or area.

Semi-annual report

July - December 2019

ENVIRONMENT SAFEGUARD MONITORING REPORT

**L2961 – VIE: WATER SUPPLY FOR BUON MA THUOT CITY
AND THREE ADJACENT DISTRICTS OF EA KAR, BUON DON
AND KRONG NANG**

Prepared by Dak Lac Water Supply Company for the Buon Me Thuat People Committee and the Asian Development Bank.

CURRENCY EQUIVALENTS

Currency unit	(Up to Dec 2019)	
\$1.00	–	Viet Nam Dong (VND)
	=	VND 23,275

UNITS OF MEASUREMENT

ha	–	Hectare
kg	–	Kilogram
km	–	Kilometre
m	–	Meter
t	–	Ton
m ²		Square meter
m ³		Cubic meter
m ³ /d		Cubic meter per day
m ³ /s		Cubic meter per second
mm		millimetre

TABLE CONTENTS

ABBREVIATION.....	6
EXECUTIVE SUMMARY	1
1. Project overview, General safeguard matters	3
1.1 Project Overview	3
1.1.1 Project's objectives and works	3
1.1.2 Water supply system in Buon Ma Thuot city	4
1.1.3 Water supply system in three adjacent towns.....	5
1.2 Project Progress	11
1.2.1 Contractor and packages.....	11
1.3 Environmental monitoring Plans and implementation arrangements.....	13
1.4 Updated EMPs, Incorporation of Safeguards Requirements into Project Contractual Arrangements	16
2. Environmental Monitoring Implementation Results	17
2.1 Status of EMP implementation (mitigation measures).....	17
2.2 Issue for further action.....	23
3. Health and Safety	25
4. Environment Effects Monitoring.....	25
5. Information Disclosure, Community Consultancy and grievance redress	26
5.1 Public consultation.....	26
5.2 Grievance Redress mechanism	27
6. Conclusion and recommendation	28
6.1 Conclusion.....	28
6.2 Recommendation	28
Appendix A: <i>Detail of packages' divisions:</i>	29

ABBREVIATION

ADB	Asian Development Bank
AP	Affected People
PMU	Project management unit
CCGQKNTM	Grievance redress mechanism
DAKWACO	Dak Lak water supply and construction investment one-member limited company
DTTS	Ethnic minority
HH	Household
EMP	Environmental management plan
SEMP	Site environment management plan
RP	Resettlement plan
D.N.	Day-night
QCVN	Technical regulation
CMC	Construction monitoring consultant
EMC	Environmental monitoring consultant
WTP	Water treatment plant
VUWSDP	Vietnam Urban water supply development project
WB	World Bank
TA	Technical Assistance

EXECUTIVE SUMMARY

1. This semi-annual report about water supply project environmental safety implementation policy status was prepared by PMU of Dak Lak water supply joint stock company in the first semi-annual 2019 with the assistance from Eptisa supervision Consultant Contractor (41456-033) (under DL-CS01 contract) This report covers the implementation progress of environmental safeguard and occupational safety activities from July to December 30, 2019.
2. PMU of Dak Lak water supply joint stock company had 06 packages including 05 construction packages and 01 supervision and institutional strengthening package.
 - i. DLCW01 package: Supply and Install of the raw water intake and transmission pipeline 35.000m³/day.
 - ii. DLCW02 package: Water treatment plant with capacity 35.000m³/day and treatment water transmission pipeline t booster pumping station.
 - iii. DLCW-03 package: Booster pumping station, treated water transmission pipelines to Buon Ma Thuot city water supplying network.
 - iv. DLCW-04 package: Construction of Buon Ma Thuot treated water transmission and distribution pipelines.
 - v. DLCW-05 package: Raw water intake + pumping station + transmission pipelines, water treatment plant, water treatment plant, treatment water transmission pipeline and distribution network for three districts of Ea Kar, Buon Don and Krong Nang.
 - vi. DL-CS-01 package: Construction supervision and institutional strengthening in non-revenue water management (41456-033) that implemented by Eptisa company. Environment + Gender + Resettlement safety policy implementation assistance consultant is under this package.
3. The civil work of the 05 construction packages was started from period of October-November 2017, in which 4 packages (DLCW-01, DLCW02, DLCW03 & DLCW05) of the project commenced on 16 Nov 2017, except for DLCW04 commenced on 10 Oct 2017. The project has been in compliance with policies of the Government and of the ADB on environmental protection and occupational safety. The approved reports include: Environmental Protection Commitments (EPC), Initial Environmental Examination (IEE) and Updated Environmental Management Plans (uEMP), two SEMRs of 2018.
4. The Contractor Environmental Management Plan (CEMP) of 5 packages (DLCW01, DLCW02, DLCW03, DLCW04, DLCW05) have been prepared by Contractor. PMU also approved all Environmental Protection Commitments of Construction Contractor before undertaking of the Project. 100% of Contractor had commitment about implementation of all mitigation measures that mentioned in uEMP /CEMP and submitted to DPC before implementation of all packages' construction.

5. In general, the Contractor's implementation of Environmental Safeguard and Occupational Safety under the Project has been compliant with the project requirements. The Contractor has also implemented the environmental impact mitigation measures under the approved CEMP. The project has been mostly compliant with national regulations and policies of the Donor on environmental aspect and occupational safety.

1. Project overview, General safeguard matters

1.1 Project Overview

1. According to the letter 240/BKHDT-KTDN dated 14 January 2011 by The Ministry of Planning and investment to ADB director, Dak Lak is one of 12 provinces including Hai Phong, Da Nang, Thua Thien Hue, Bac Giang, Thai Nguyen, Thanh Hoa, Nghe An, Quang Tri, Dak Lak, Quang Nam, Lam Dong and Binh Dinh taking part in stage 02 of water section development program.

2. On 15 February 2011 the ADB letter was sent to the MPI on “Multi-tranche Financing Facility “Water Sector Investment Program” Second Tranche (2011) – Periodic Financing Request 2 (PRF2)” to agree the list of participating provinces in PRF2, namely Hai Phong, Da Nang, Thua Thien Hue, Bac Giang, Thai Nguyen, Nghi Son, Nghe An, Quang Tri, Dak Lak (public and private) Quang Nam, Lam Dong and Binh Duong, with total estimated investment capital of \$540 million.

3. On 8 February 2011, Ministry of Planning and Investment submitted to the Prime Minister letter No 5044/BKHDT-KTDN re “Approval of sub- projects participating the Viet Nam Water Sector Investment Program, ADB Loan” (Program). The Program for 2011 – 2012 financial year is expected to be conducted in 12 provinces including Hai Phong, Da Nang, Thua Thien Hue, Bac Giang, Thai Nguyen, Thanh Hoa, Nghe An, Quang Tri, Quang Nam, Dak Lak, Lam Dong and Binh Duong.

4. The Prime Minister issued letter No 1530/TTg-QHQT dated 5 September 2011 re “Approval list of project components under Program for Viet Nam Water Sector Investment in 2011 – 2012”.

5. Water supply project for Buon Ma Thuot and three adjacent districts of Ea Kar, Buon Don and Krong Nang was officially commenced from 19 Oct 2017; all project components were classified as class B in environment aspects.

1.1.1 Project’s objectives and works

Project Objective:

6. The development objective of the Project is to improve water supply for domestic, industrial and service- commercial use in Buon Ma Thuot City and three district towns having the same names as their districts of Ea Kar, Buon Don and Krong Nang.

7. The Project implementation will bring specific success as follows: ensure quality of clean water supplied to local residents, increase customers from construction of new-piped water supply system and expansion of piped water supply.

8. The overall objective of the Project is to increase water supply coverage for residents in Buon Ma Thuot City and its adjacent areas within the Project service area. That will create favorable conditions for improvements of living conditions and health of

residents; for socio-economic, industrial and tourism development of Buon Ma Thuot city and project towns, Dak Lak province and Central Highland region.

9. The specific objective of the Project is to improve access to safe and reliable piped water supply in Buon Ma Thuot city and meet the forecast water demands to 2020 of 13 yards and 8 communes of the City and to meet the demand of safe and reliable piped water supply in three district towns of Ea Kar, Buon Don and Krong Nang to 2020.

10. Project Works: water supply for Buon Ma Thuot city and three adjacent districts of Ea Kar Buon Don and Krong Nang includes subprojects as below:

1.1.2 Water supply system in Buon Ma Thuot city

11. Raw water facilities: construct a water intake and design capacity of 35,000 m³/day raw water pumping station. Install a mid-voltage power line from the electricity grid to the raw water pumping station, transformer sub-station and low voltage line and backup generator. Install a 06km long HDPE DN700 raw water pipeline from the raw water pumping station to the water treatment plant (WTP) which is located on Tan Lap hill.

12. Water treatment: the proposed design capacity of 35,000 m³/day WTP will be constructed on Tan Lap hill, Krong Ana District. The treatment process is conventional including: coagulation, flocculation, sedimentation, rapid sand filtration and disinfection. Install a mid-voltage power line from the national grid to the WTP area, transformer substation, and low-voltage power line. This WTP includes Chemical houses, Sludge settling pond, Laboratory to construct and equip a testing laboratory at the WTP site to control water quality in the WTP, a Supervisory Control and Data Acquisition System (SCADA) at the WTP to monitor and control WTP operation, transmission pipelines from the WTP to the water storage reservoir with booster pumping station and transmission pipelines of treated water to Hoa Phu, Hoa Xuan, Hoa Khanh and Ea Kao communes in the South of the city.

13. Booster pumping station: construct a booster pumping station (capacity 32,000 m³/day) and a 5,000 m³ storage reservoir to pump water to the transmission and distribution pipelines. These will be located in the Hamlet 11, Ea Tam ward.

14. Transmission and distribution network: install totally 130 km transmission mains and distribution pipelines, 80 km DN50-90 service lines and 22,000 service connections.

Table 01: SUMMARIZATION OF ALL WATER SUPPLY ITEMS IN BUON MA THUOT CITY

No.	Item	Capacity
A	DLCW-01 PACKAGE	35,000 m ³ /day

1	Raw water intake and pumping station	
2	DN700 raw water pipeline	
B	DLCW02 PACKAGE	35,000 m ³ /day
1	Water treatment plant, treated transmission pipeline into booster pumping station	
1	Water treatment plant	
2	SCADA	
3	Treated transmission pipeline into booster pumping station	
C	DLCW03 PACKAGE	32,000 m ³ /day and a 5,000 m ³ storage reservoir to pump water to the transmission and distribution pipelines
1	Booster pumping station	
2	22 Kv electricity wire	
3	Treated water transmission pipelines into network	
4	2L – Pipeline crossing stream	
D	DLCW04 PACKAGE	130 km transmission mains and distribution pipelines, 80 km DN 50-90 service lines and 22,000 service connections

1.1.3 Water supply system in three adjacent towns

15. Ea Kar: Construct a 2,500 m³/day WTP on the small Chu Cuc hill. Raw water will be supplied from the Ea Kar dam. Total length of transmission, distribution pipelines and service connection are 44 km. Installation of 3,300 service connections.

16. Buon Don: Construct a 1,000 m³/day WTP in Ea Wer. Raw water will be supplied from Serepok hydro-electric dam. Total length of transmission, distribution pipelines and service connection are 22 km. Installation of 1,400 service connections.

17. Krong Nang: Construct a 1,600 m³/day WTP in Ho Sen park area. Raw water will be supplied from the Dong Ho Lake. Total length of transmission, distribution pipelines and service connection are 34 km. Installation of 2,300 service connections.

18. Summary of land map and water supply capacity in Buon Ma Thuot city and three adjacent districts of project are in figure 1.1.

1.1.3.1 Ea Kar town

Stage	Capacity
Phase I	2,500 m ³ /day
Water resource	Water in Ea Kar lake Offside intake close of Ea Kar dam; Pumped through raw water main to WTP

Treatment and network	<p>WTP is on bottom of Chu Cuc hill.</p> <p>Water treatment scheme: surface water treatment technology: coagulation, flocculation, lamella sedimentation, rapid filtration, disinfection.</p> <p>Conditioned pumped on the hill and treated reservoir is on top of hill</p> <p>Backwash water from reservoir</p>
-----------------------	--

1.1.3.2 Buon Don town

Stage	Content
Stage	Capacity
Phase I	1. 000 m ³ /day
Water resource development	Surface water source is from hydroelectric lake Serepok 04 Offside intake, submersible pumps into WTP
Water treatment	<p>Location: Ea Wer ward</p> <p>Treatment scheme: coagulation, flocculation, lamella sedimentation, rapid filtration, disinfection, in storage reservoir. Backwash pump. Treated water pumped to distribution network by booster pumps adjusted by inverter, backwash water treatment by a sludge lagoon.</p>
Network	Treated water pumped to distribution network by booster pumps adjusted by inverter.

1.1.3.3 Krong Nang town

Stage	Capacity
Phase I	1.600 m ³ /day
Resource development	Surface water applied from Dong Ho Lake. Raw water intake works, submersible pumps to pump water to WTP.
Water treatment	<p>The WTP will be located at the Lotus Lake Park.</p> <p>Water treatment profile: surface water treatment scheme: coagulation, flocculation, lamella sedimentation, rapid filtration, disinfection in storage reservoir, backwash by pump and air blow, treated water pumped to distribution network under control of an inverter, backwash water treatment by a sludge lagoon.</p>
Network	Treated water pumping will be controlled by inverter

19. Location of each component of the projects and details of each package' items are presented in the figure 1, 2,3,4 as below:

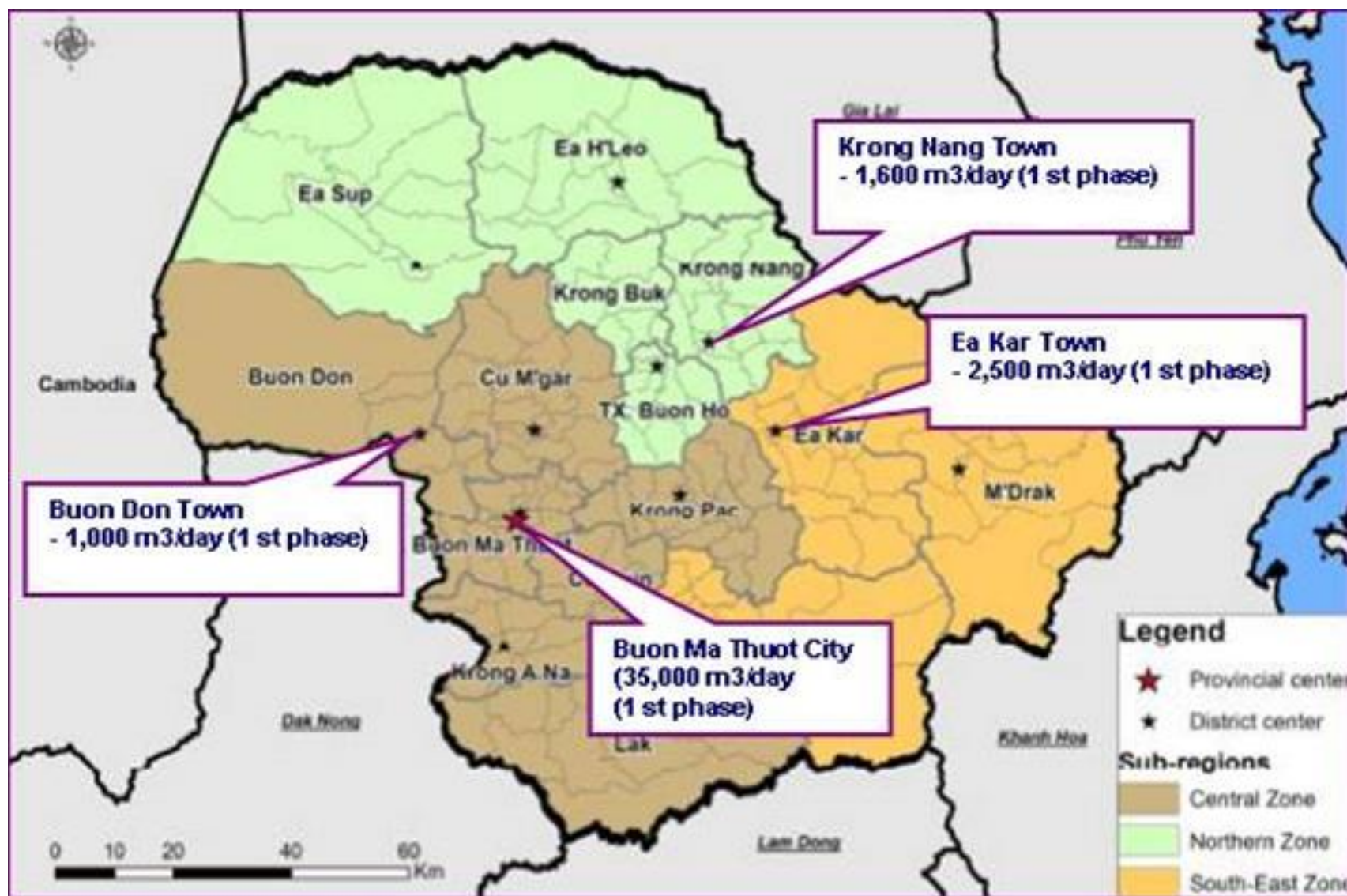


Figure 1: Land map of project package

Buon Ma Thuot city water supply system

Figure 2: Buon Ma Thuot city water supply system

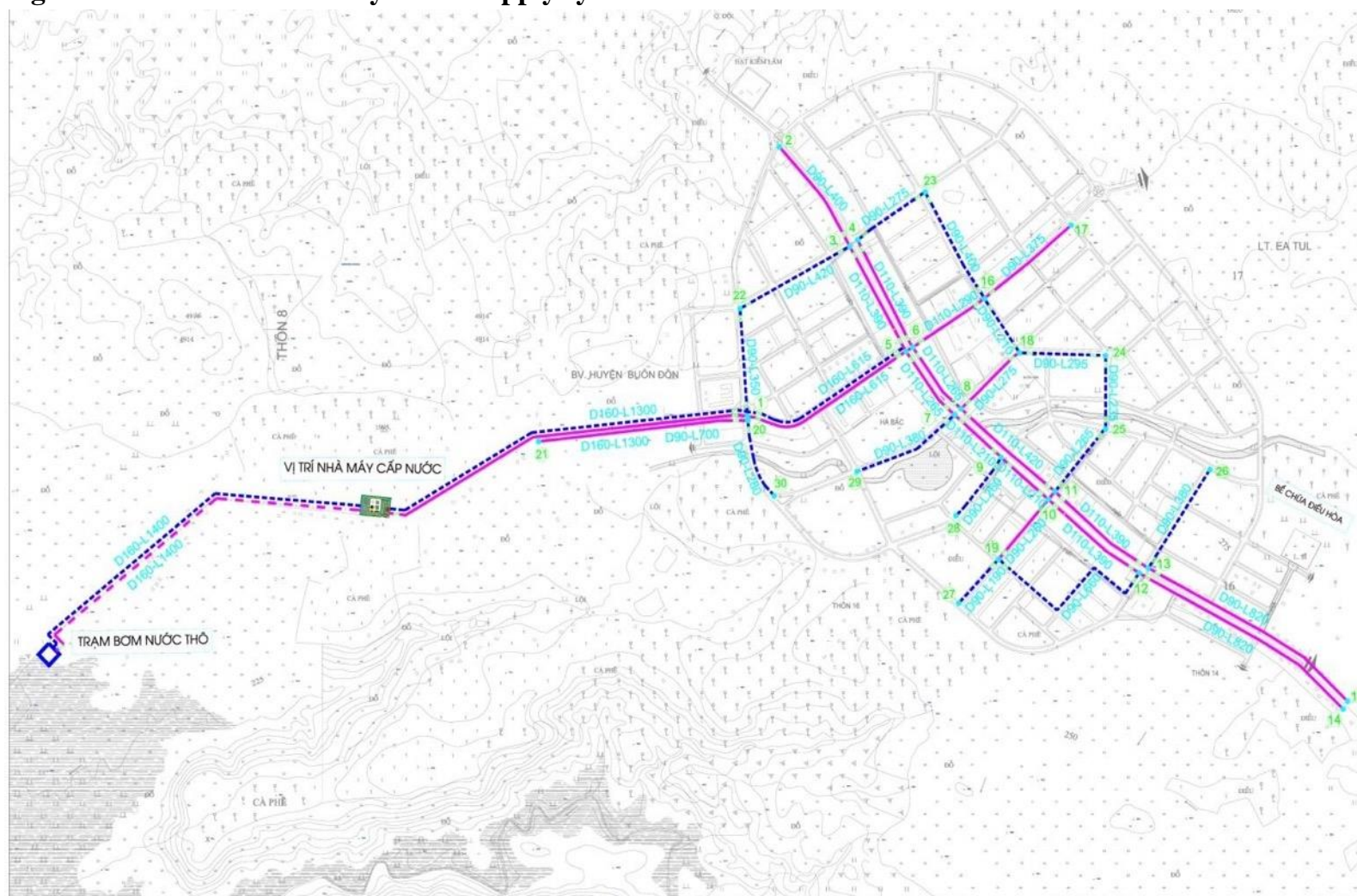


Figure 3: Buon Don district water supply system

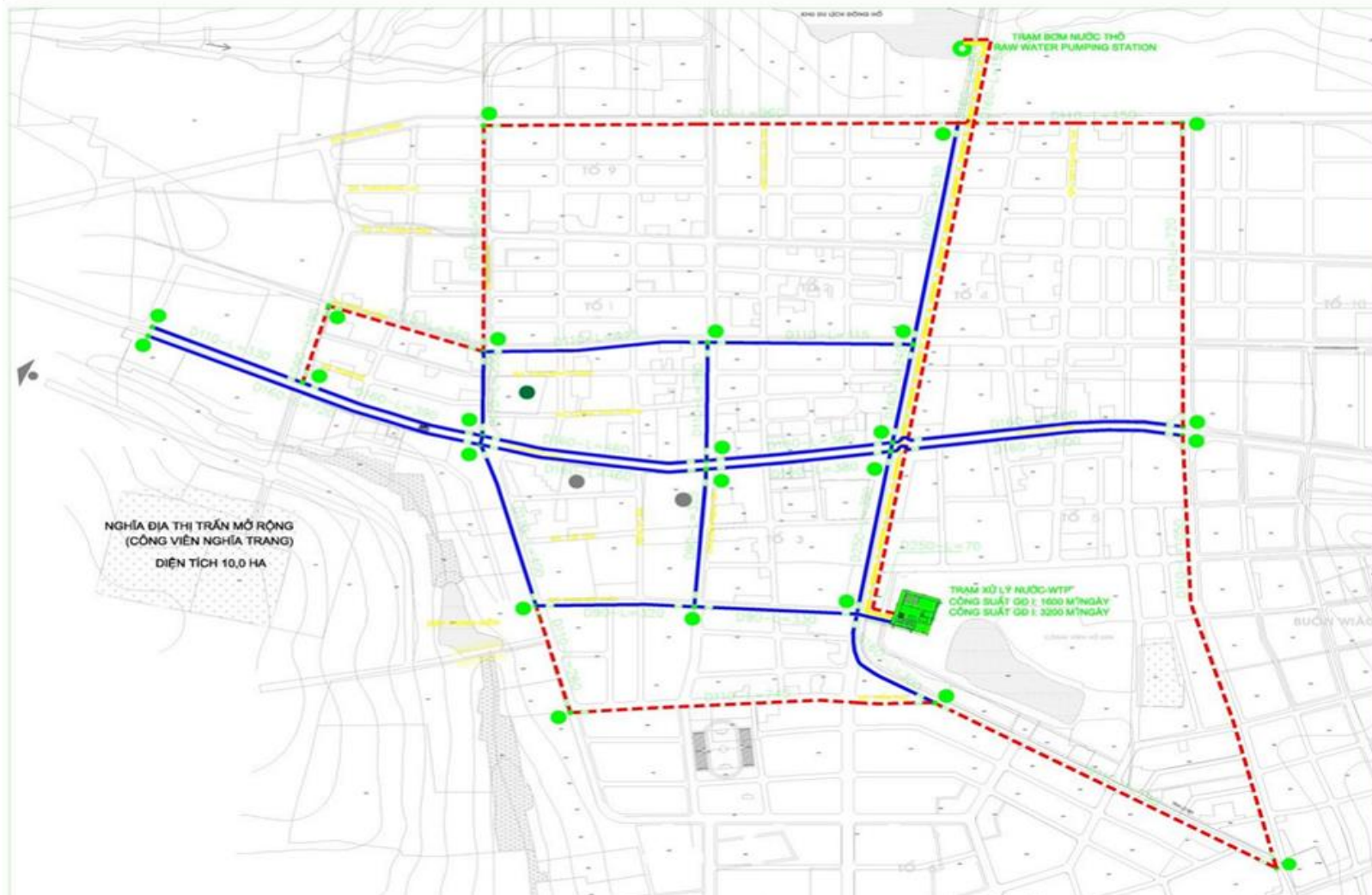


Figure 4: Krong Nang district water supply system

1.2 Project Progress

1.2.1 Contractor and packages

20. The project has 05 packages. All packages, contractors and periods of each package is summarized in below table:

Table 2: Information summary of all construction packages

Package	Contractor	Contract			Progress (up to 30 Dec 2019)
		Signed contract date	Commence-ment date	Adjustment	
DLCW01: supply and install raw water intake and transmission pipelines with capacity 35.000m ³ /day	Water supply and sewerage construction and investment JSC. (WASECO)	10/08/2017	16/11/2017 (403/TB-BQLDA)	Extended from 435 days to 562 days	100 %
DLCW-02: WTP with capacity 35.000m ³ /day and transmission pipeline to booster pumping station.	Dai Phu Thinh Co. Ltd.	10/08/2017	16/11/2017 (404/TB-BQLDA)	Extended from 460 days to 640 days	100 %
DLCW-03: booster pumping station and transmission pipeline to network	JV of Europe Pump & Dai Phu Thinh Co. Ltd	31/07/2017	16/11/2017 (405/TB-BQLDA)	Extended from 435 days to 623 days	99.949 %
DLCW-04: Construct transmission and distribution pipelines in Buon Ma Thuot city.	JV of Ha Huy Co. JSC and Ha Noi water electricity installation and construction Co. JSC. (HAWEICCO)	11/08/2017	10/10/2017 (344/TB-BQLDA)	Extended from 520 days to 659 days	100 %
DLCW-05: Intake, raw water pumping station, transmission pipelines, WTP, treated transmission pipelines and distribution network of three districts Ea Kar, Buon Don and Krong Nang	Vietnam water and environment Investment Corporation – JSC	15/08/2017	16/11/2017 (401/TB-BQLDA)	Extended from 540 days to 721 days	58.17 %
DL-CS01: Construction supervision & Institutional strengthening in no-revenue water management (41456-033)	Joint Venture of EPTISA SERVICIOS DE INGENIERIA S.L. and CEN joint stock company (as called Eptisa Contractor)	08 Nov 2016		extended from 30 months to 39 months	

(Source: Quarterly Project Progress Report, Dec 2019)

Construction activities during the reporting period:

21. Construction activities have completed for 4 packages DLCW01, 02, 03 & 04, no activities were taken in Buon Me Thuot City during this reporting report. The construction of intake and water treatment stations under package DLCW05 were implemented in Ea Kar, Buon Don and Krong Nang Districts, Dak Lak Province.

Construction activities during the next reporting period:

22. The activities under package DLCW05 are going to be implemented in Ea Kar, Buon Don and Krong Nang Districts, Dak Lak Province.

23. Some key safeguard information and activities carried out during the reporting period are summarized in Table 4.

Table 4: Project Overview, Snapshot of Project Progress

Project Number and Title:	WATER SUPPLY FOR BUON MA THUOT CITY AND THREE ADJACENT DISTRICTS OF EA KAR, BUON DON AND KRONG NANG ADB No.2961-VIE	
Safeguards classification	Environment	Category B
	Involuntary Resettlement	Category B
	Indigenous Peoples	Category C
Reporting period:	Second semi-annual monitoring 2019 – (report No 04)	
Last report date:	June 2019	
Key sub-project activities:	Contract awarding: Appx.24,59 million USD	
	Main construction activities	
	The Project includes 05 construction packages. The project as of 30 of December 2019 is given as below:	
	<i>Item</i>	<i>Construction progress</i>
	DLCW01 Package	100 %
	DLCW02 Package	100 %
	DLCW03 Package	99.949 %
	DLCW04 Package	100 %
	DLCW05 Package	58.17 %

	Contract award and ground-breaking on August, 2017 and construction began from October and November 2017.
Main environmental activities during the reporting period	<p>IEE, EMP, uEMP, EPP (environmental protection plan), SEMP</p> <p>i) 04 EPPs for 04 water supplying structures were approved by Buon Ma Thuot CPC and 03 DPC in project areas in 2016. The details are: EPP was approved by Buon Ma Thuot CPC on 14 Jun 2016; Buon Don DPC on 13 May 2016; Ea Kar DPC on 17 May 2016 and Krong Nang DPC on 04 May 2016.</p> <p>ii) 01 IEE for the whole project was approved by ADB in 2012</p> <p>iii) 01 updated environment management plan was approved by ADB in December 2016.</p> <p>iv) Updated environment management plan was integrated as one part in bid documents in 2017.</p> <p>v) 05 construction contractors of 05 packages prepared 05 CEMP and submitted for PMU after contract signature and before Notice to Proceed.</p> <p>vi) 03 monitoring reports for the year of 2018, and first six months of 2019 submitted and approved by ADB</p> <p>vii) EMC, CMC conduct inspections and spot checks in monitoring performance of the Contractors on implementation of activities/mitigation measures on environmental protection and occupational safety at site during construction in accordance with the approved CEMPs, uEMPs / EPPs.</p> <p>viii) affected people consultations were conducted in September 2019.</p>
Assistance PMU to prepare reports	Environmental monitoring + contract management + construction monitoring by joint venture of Eptisa to support PMU in preparation of reports to submit to ADB twice a year.

1.3 Environmental monitoring Plans and implementation arrangements

23. Dak Lak Construction Investment Water Supply One Member Limited Company (DAKWACO) who is the project owner (PO) and sub-executing agency (EA); 2) a designated project management unit (PMU) to support DAKWACO who will implement the subproject components and the EMP; and 3) a Construction Supervision Consultant¹ (CSC) who will assist to update EMP to ensure EMP meets the final subproject designs. The ADB is responsible for monitoring to ensure subproject meets the environmental safeguards of the SPS (2009).

24. The EA (DAKWACO) has the ultimate responsibility for implementation of the entire subproject, including finance and administration, technical and procurement matters, monitoring and evaluation, and environmental safeguards compliance. The DAKWACO will operate the completed water supply system (WS).

¹CSC contract expected to include construction supervision.

25. The Department of Natural Resources and Environment (DoNRE) is the provincial agency which oversees environmental management of Dak Lak. The DoNRE with District staff provides direction and support for environmental protection-related matters including application of the Law on Environmental protection (LEP 2014), and on use of the environmental policy and standards that are in place protect the environment (see Table 4).

26. Dak Lak water supply construction and investment project management unit (PMU) signed contract with Eptisa (thereby the CSC) on 8 November 2016 to provide consultant service (construction supervision and environment– society – gender + ethnic minority safeguard policy implementation monitoring). The CSC will be a team including international and national consultant to implement tasks in 30 months in which construction supervision consultant engineers will work full time and environment monitoring, society and ethnic minority consultants will work part-time.

27. The relationship among parties: all participants related to the project including the DAKWACO/PMU, design consultant, CSC and construction contractors must incorporate firmly with each other to ensure that the project in compliance with design, current state standards. CSC supports PMU to monitor the implementation of all Project contractors, in which construction supervision consultant undertook the full-time monitoring of all problems related to construction + environment at the sites; environment monitoring consultant supervised once per three months during construction stages and support PMU to prepare the reports and submit to ADB.

28. The supervision results of implementing mitigation measures by construction contractors have been updated in general periodic progress report of project prepared by CSC. The Second semi-annual 2019 environment monitoring report made by environment monitoring consultant (EMC) under CSC will include supervision of implementation of all mitigation measurement based on environment management plan committed by construction contractors.

Table 5: Project Implementation Organization

No	Agencies	Responsibilities of environmental management implementation	Current compliance status
1	PMU	<p>To support DAKWACO who will implement the subproject components and the EMP</p> <p>will be responsible for the detailed engineering and preparation of construction plans, and construction monitoring with support from the CSC.</p> <p>It will be responsible for overseeing the overall procurement process as well as for the overall financial monitoring of the project. Taking responsibilities for updating of the environmental monitoring plan (uEMP), management, monitoring, supervision and</p>	<p>Being complied with</p> <ul style="list-style-type: none"> - Detailed engineering design and construction plans, construction monitoring - Updating EMP; include uEMP on construction contractors' contracts - Disclosure project information - Continuing public consultation, responding to complaints from

No	Agencies	Responsibilities of environmental management implementation	Current compliance status
		preparation of environmental monitoring reports to submit ADB every 6 months.	communities/stakeholders affected by subproject implementation - Implementing of the uEMP
	Construction supervision Consultant (Eptisa)	Provide consultant service team in 30 months in which construction supervision engineers will work full time and environment, social and gender will work part time.	Partially complied. Provide engineering consultants and CMC fulltime on sites- Environmental, social and gender consultants were mobilized part time for supervision and assistance when necessary No environmental samples program undertaken during the reporting period as required in the uEMP
	Environmental monitoring consultant (EMC) under Eptisa	Assistance PMU to do: (i) Update the EMP reports. (ii) Review the design document + contract + CEMP to assure the mitigation measures on environmental impact that mentioned in uEMP to be integrated in bid document and detail of implementation commitment in CEMP. (iii) Assistance PMU in selection of authorized agencies, which of taking periodical environment observation samples to evaluate the impacts of construction activities on surrounding environment. (iv) Field visiting around construction sites in sub-project areas to check, remind contractors to do the environment safety policies; listen and record of local and community opinions that living surrounding the construction sites.	Partially complied. uEMP was approved by ADB in December 2016. Completion of semi-annual monitoring reports for 2018 and the six first months of 2019. A delay of submission of SEMRs to ADB due to the ineffective cooperation among the CSC. Field visiting with public consultation at the construction sites was conducted in Sep 2019 Reviewing the quarterly monitoring reports by construction supervision

No	Agencies	Responsibilities of environmental management implementation	Current compliance status
		(v) Taking part in project internal monitoring groups; meet all relevant parties regularly; consultancy with local authority community. Support PMU and contractor to implement of detailed requirements in uEMP.	consultant and on behalf of PMU to draft the second semi-annual 2019 environment monitoring report for PMU to submit ADB.

29. PMU and Consultation organization flowchart is presented in the figure 5 as below:

CONSULTANT ORGANIZATION CHART

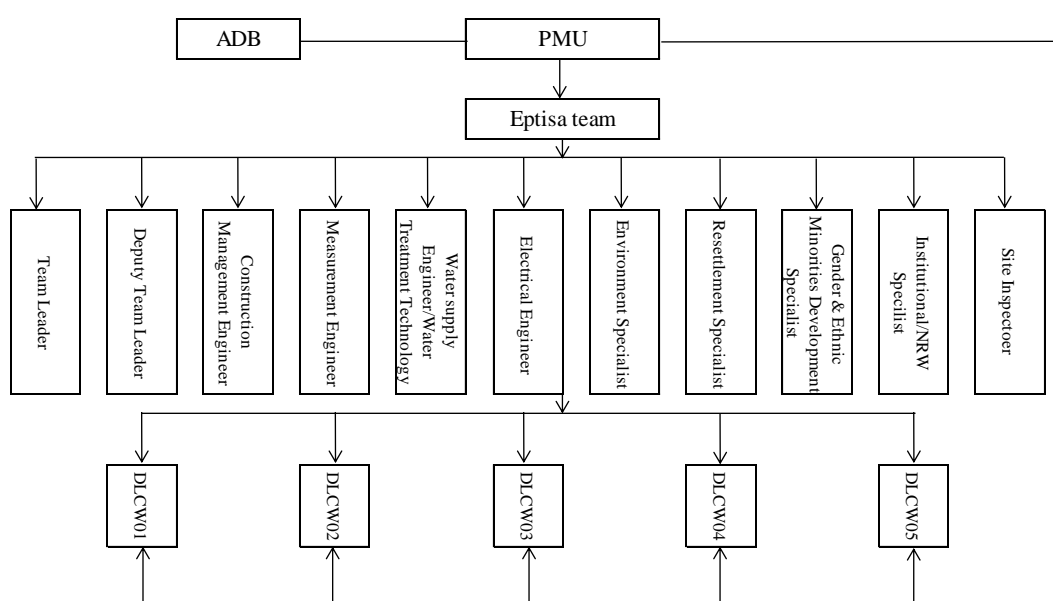


Figure 5: PMU and Consultation organization flowchart

1.4 Updated EMPs, Incorporation of Safeguards Requirements into Project Contractual Arrangements

30. An EMP report was updated, submitted and approved by ADB on December 2016.

31. All safeguard requirement setting forth in the Loan Covenant and uEMP (safeguard requirement, mitigation measures, environmental management plan) were integrated into bidding documents and economic contracts with construction contracts.

32. All construction contractors submitted CEMP for PMU and sent commitments about implementation of all mitigation measures that mentioned in uEMP/CEMP to DPC before construction.

33. The three semi-annual monitoring reports for 2018 and the first six months of 2019 on the implementation of mitigation measures required in uEMP/CEMPs that were approved by ADB. The summary of the preparation and approval of CEMP is shown in the following table

Table 5. Summary of the preparation of Site-specific Environmental Management Plans (CEMP)

No.	Name of Packages	Date of submission and approval of CEMP
-----	------------------	---

1	DLCW01	Submitted on 17/01/2017 Approved on 13/02/2017 by PMU
2	DLCW02	Submitted on 26/05/2017. Approved on 26/9/2017 by PMU
3	DLCW03	Submitted on 5/4/2017 Approved on 10/4/2017 by PMU
4	DLCW04	Approved on 29/5/2017 by PMU
5	DLCW05	Approved on 10 January 2018 by PMU

2. Environmental Monitoring Implementation Results

2.1 Status of EMP implementation (mitigation measures)

34. PMU assigned a technician (Mr Nguyen Dinh Viet) and construction supervision consultants to check site regularly. An EMC (Ms Vu Hoang Hoa) under Eptisa checked the construction sites every 3-month. The EMC with construction supervision consultants in charge of monitoring of environmental safeguard policy implementation of all construction contractors. Every three months, sample monitoring unit is rent to take site monitoring samples. Monthly, PMU, construction contractors and Eptisa Supervision Consultant organized meetings to discuss about environmental and safety issues needing to be resolved (if having).

35. During construction, contractors are requested to implement all requirements of updated environment management plan that mentioned in bidding documents, contractor's environment management plans (CEMP). By supervision results, contractors are followed environment hygiene assurance, labor safety or changed after reminding. Summary of supervision results of environment safety policy compliance activities, implementation of mitigation measurements in initial environmental examination/updated EMP will be shown in table 6.

Table 6: Compliance with EMP Requirements

EMAP requirements	Compliance status (Yes, No, Partly)	Remark – reason of non-compliance	Further action
Construction Phase – For Raw Water Intakes, Mains, WTPs, and Boosted Treated Water Networks Buon Ma Thuot, EaKar, Krong Nang, & Buon Don			

EMAP requirements	Compliance status (Yes, No, Partly)	Remark – reason of non-compliance	Further action
Worker camp operation	Yes - Hire adequate housing and waste disposal facilities including pit latrines and garbage bins, adequate drainage. - solid waste collection by commune's garbage collection groups (in the 3 districts and by BMT Urenco of BMT PC) and maintains a clean worker camps - Workers have been registered with local authorities - AIDS education to workers.	N/a	N/a
Training & capacity	Yes - EMC under Eptisa implemented training and building capacity directly for DAKWACO / PMU (Environmental staff), CSC and contractors at the sites within Quarter 03 2018	N/a	N/a
Contractor's information disclosure	Yes - Monthly/regular inform to local commune authority the project's implementation date. - Construction contractors have put the starting and ending date and hotline phone number on the instruction board at project site	N/a	N/a
Tree and vegetation removal, and site restoration sub-plan	Yes - Agreement with local farm company on how to minimize damage to trees and vegetation. - Restrict tree and vegetation removal to within designated RoWs. - Install protective physical barriers around trees that do not need to be removed. - All RoWs to be re-vegetated and landscaped after construction completed.	N/a	N/a

EMAP requirements	Compliance status (Yes, No, Partly)	Remark – reason of non-compliance	Further action
Civil works	Partly <ul style="list-style-type: none"> - All construction sites are located away plantation, & agricultural areas as much as possible. - No unnecessary cutting of trees. - All construction fluids such as oils, and fuels stored and handled well away plantation areas. - No waste of any kind is to be discarded on land or in plantations. - Package DLCW02: Land compensation at the pile 225 was delayed, construction of pipeline was slow 	Land compensation was delayed at pile 225 (DLCW 02)	Eptisa/PMU will have responsibilities for supervising the compensation and land surface recover activities after constructions, contact with local authorities to solve all issues arisen before the end of January 2020
Civil works for intakes	Yes <ul style="list-style-type: none"> - Iron sheet fencing, silt curtains is placed between all earthworks and surface waters in Srepok river. The protective berm was done for All existing irrigation canals. - Erosion channels is built around aggregate stockpile areas to contain rain-induced erosion. - Earthworks conducted during dry periods. - All construction fluids such as oils, and fuels are stored and handled well away from surface waters. - No waste of any kind is to be thrown in surface waters. No washing or repair of machinery near surface waters. - Pit latrines to be located well away from all surface waters. 	N/a	N/a
Cultural chance finds	Yes <ul style="list-style-type: none"> - All civil works located away from all cultural property and values including cemeteries and pagodas. - No report of finds of valued relics and cultural values during construction 	N/a	N/a

EMAP requirements	Compliance status (Yes, No, Partly)	Remark – reason of non-compliance	Further action
Construction materials acquisition, transport, and storage sub-plan	Yes -No accident and grievance that related to temporal material storage action; slow period in transportation period due to action of temporal material storage areas from local residents; all company/organization. - No complain related to the pollution issues, injury, increased traffic, disrupted access during construction	N/a	N/a
Excavation spoil management sub-plan	Yes - Almost of excavated soil is reused to backfill construction land. - The excess excavated soil has been used for leveling or transported to landfill as the contractors has signed the contract with the service unit for collection, transport, and treatment of excess soil.	N/a	N/a
Construction Drainage sub-plan	Yes - Have adequate short-term drainage to prevent ponding and flooding on construction sites.	N/a	N/a

EMAP requirements	Compliance status (Yes, No, Partly)	Remark – reason of non-compliance	Further action
Solid and liquid construction waste sub-plan	<p>Yes</p> <ul style="list-style-type: none"> - Construction contractors have signed contracts with service units of Buon Me Thuot city and districts to collect, transport and transport solid waste and hazardous waste out of the site in accordance with Government regulations. - All waste created from construction activities and worker force is covered, daily/3 time a week collected, transport, recycling, and disposal by Buon Me Thuot URENCO or commune group as contractors have contracted with commune on waste collection; - Construction sites have large garbage bins ensures construction sites are as clean as possible... - Hazardous waste such as used oils, gasoline, paint, stored above ground in closed, well labeled in good condition well away from construction activity areas, all surface water, water supplies, and sensitive receptors. 	N/a	N/a
Noise and dust	<p>Yes</p> <ul style="list-style-type: none"> - Regularly apply wetting agents to exposed soil and construction roads especially in high density areas. - Cover or keep moist all stockpiles of construction aggregates, and all truckloads of aggregates - Minimize time that excavations and exposed soil are left open/exposed. - Maintain registries equipment in proper working order or turned off when not in use. 	N/a	N/a
Utility and power disruption sub-plan	<p>Yes</p> <ul style="list-style-type: none"> - No loss or disruption of utilities and services such as water supply and electricity during construction 	N/a	N/a

EMAP requirements	Compliance status (Yes, No, Partly)	Remark – reason of non-compliance	Further action
Erosion sub-plan	Yes - No land erosion	N/a	N/a
Worker and public safety sub-plan	Partly - Fencing, protective barriers, speed limit sign provided around all construction sites or on all roads used by construction vehicles. - Standing water suitable for disease vector breeding is filled in. - Arrange at least 02 officers (flags) at each affected road end, from eight o'clock to five o'clock in the afternoon and during overtime with flags and signs. - Access locks are provided with alternative safety access ways. - Do not have to pause work due to a work-related accident; - There are no complaints from local people regarding the construction workers' actions.	Some workers were observed to not wear adequate PPE while working on the sites in Ea Kar District. The site at height above 5 m of Ea Kar WTP was not secured by a proper fence system	The contractor of DLCW05 should implement the following corrective actions: - Provide adequate PPE (helmet, shoes, gloves) to the workers and request them to use the PPE while working. - Build a strong 1.5m high fence surrounding every sites above 3 m to prevent the accidents from working at height Deadline: in January 2020 The PMU/CSC is responsible for supervising the implementation of these corrective actions
Construction and local vehicle traffic sub-plan	Yes - No traffic accidents or complaints from neighboring communities related to construction activities; - There are signs boards of construction works and limit speed on the construction site - Construction activities did not cause traffic congestion ..	N/a	N/a
Environmental monitoring <i>Sampling to observe environmental parameters 3 months / time</i>	Partly - Supervision contractors under Eptisa followed report writing guideline, but the on-site information must update. Monitoring noise and air quality at construction sites of water treatment plant and booster pumping station for Buon Ma Thuot city, water treatment of Ea Kar, Krong Ana and Buon Don	Contractor notebooks on site is not detailed mitigation measures which must be implemented.	Contractor and CSC notebooks templates must be revised and added more details of all mitigation measures for monitoring before the end of January 2020. CSC should carry out the required sampling programs

EMAP requirements	Compliance status (Yes, No, Partly)	Remark – reason of non-compliance	Further action
<i>in construction period</i>	districts, along water transmission pipelines sites in Buon Me Thuot city.	No sampling program was conducted during the reporting period	for the construction activities of DLCW05 in QI & II of 2020. Deadline: June 2020

2.2 Issue for further action

Table 7: Issues for Further Action

Issue	Required Actions	Responsibility and Timing (implementation/supervision)	Resolution
Old Issues from Previous Reports			
Package DLCW01: The construction site at pumping station was not clean up well, neatly before handing over to the investor	Construction site must clean up neatly before handing over to the investor by the constructor of DLCW 01 before the end of June 2019 Eptisa will have responsibilities for supervising the clean site activities by constructors before the end of June 2019	Done	N/a
Civil works	Eptisa/ PMU will have responsibilities for supervising the land surface recover activities after constructions, contact with local authorities to solve all issues arisen before the end of June 2019	Not done yet	Eptisa/PMU will have responsibilities for land surface recover activities after constructions, contact with local authorities to solve all issues arisen before the end of January 2020 Increase communication for local people to understand the need to delay in soil filling in some locations for test pipeline pressure.
Non-compliance in quarterly monitoring report writing	Contractor and CSC notebooks templates must revise and added more details of all mitigation measures	Not Done Yet	Construction supervisor under Eptisa must revised all reports from January 2020. PMU officers supervising

	Supervision contractors under Eptisa followed report writing guideline, but the on-site information must update.		on site cooperate with EMC under Eptisa to monitor the revision and update Contractor and CSC notebooks/ quarterly monitoring reports
New Issues from This Report			
Inadequate PPE during working	Provide adequate PPE (helmet, shoes, gloves) to the workers and request them to use the PPE while working. - Build a strong 1.5m high fence surrounding every sites above 3 m to prevent the accidents from working at height	Implementation: The contractor of DLCW05 Supervision: the CSC/PMU Deadline: January 2020	
Delay in surface recover	The CSC cooperating with PMU will be responsible for working with relevant stakeholders (DOC, Districts) to carry out hydrology tests of DLCW 02. Additionally, increase communication for local people to understand the need to delay in soil filling in some locations for test pipeline pressure.	Implementation: The CSC cooperating with PMU Supervision: the PMU Deadline: January 2020	
Lacking HSE information in the quarterly monitoring report	Contractor and CSC notebooks templates must revise and added more details of all mitigation measures PMU officers supervising on site cooperate with EMC under Eptisa to monitor the revision and update Contractor and CSC notebooks/ quarterly monitoring reports	Implementation: The CSC and Contractor of DLCW05 Supervision: the PMU Deadline: January 2020	

No sampling programs conducted during the reporting period	CSC should carry out the required sampling programs for the construction activities of DLCW05 in QI & II of 2020.	Implementation: The CSC Supervision: the PMU Deadline: June 2020	
Delay in submission of SEMRs to ADB	CSC should mobilize the environmental specialist to prepare and submit the SEMRs in time	Implementation: The CSC Supervision: the PMU Deadline: January 2020	

3. Health and Safety

Table 8: Health and Safety Issues

Issue	Required Action	Responsibility and Timing	Resolution
Old Issues from Previous Reports			
None			
New Issued from this report			
Inadequate PPE during working	Provide adequate PPE (helmet, shoes, gloves) to the workers and request them to use the PPE while working. - Build a strong 1.5m high fence surrounding every sites above 3 m to prevent the accidents from working at height	Implementation: The contractor of DLCW05 Supervision: the CSC/PMU Deadline: January 2020	

4. Environment Effects Monitoring

36. As explanation of the CSC, due to a few construction activities carried out during the reporting period, the impacts from construction on ambient environment are minor as so no sampling program was conducted during the second six months of 2019.

5. Information Disclosure, Community Consultancy and grievance redress

5.1 Public consultation

37. All community consultancy and project information disclosure presented to authority and locals in project areas by the PMU and construction contractor regularly. Detail of community and information disclosure is implemented by the PMU as below:

- During the second semi-annual of project implementation in 2019, the PMU hosted monthly project meetings with multi-sector supervision team. The supervision team includes representatives of the PMU, Eptisa consultants and contractor to host meetings with purposes to summary announcement of results and construction progress; resolve all arising matters (if having) with locals and local authority in project areas
- o Construction work execution plan and some mitigation measures to minimize impacts during construction phase which need to focus on during this period.
- o Construction contractors, Engineering contractors explain about pending problems related to construction implementation; answer all questions of PMU, local representatives lived nearly project areas (water supply plants and raw/clean water pipeline)
- o Discuss activities to improve pending problems and implement effectively in latter month of 2019.
- Visit site of construction areas
- o In 7-10 of September 2019, EMC under Eptisa surveyed actual construction at the site and discussion with locals in project areas to record and answers all responses to be better in project implementation.

38. No information or document in term of environment safeguard was disclosed during the reporting period. Summary of activities for information disclosure, community consultancy that undertook by representatives of Dak Lak PMU and contractors will be presented in 13

Table 13: Summary of activities for information disclosure, community consultancy and all relevant parties to the Project.

No	Activity	Responsible party	Time
1	Project meetings with relevant parties (Combination with environmental safety policy).	PMU, contractors, CSC, representatives of local authorities.	Monthly and when requested by PMU or local authorities (detail will be shown in consultant report by Eptisa)

2	Meeting with local people living nearby/within the project areas	PMU environmental officers and EMC under Eptisa	7-10 of September 2019
---	--	---	------------------------

Result summary of community consultancy will be shown in Table 14

Table 14: Result summary of community consultancy

Issues	Compliance status (Yes/No/Partly)	Comment or reason of non-compliance	Issues for further action
September 2019			
Package DLCW01:	No construction activities	N/a	N/a
Package DLCW02:	No construction activities	N/a	N/a
Package DLCW-03:	No construction activities	N/a	N/a
Package DLCW-04:	No construction activities	N/a	N/a
Package DLCW05: No Complaint from local residents.	-Yes, good contact with locals, all issues have been solved immediately -Local residents want PMU to expand clean water distribution network	N/a	N/a

5.2 Grievance Redress mechanism

- Project information as well as contact numbers is posted publicly with local authorities and in consultancy meetings so that people can respond and complain if necessary.
- In the second semi-annual of 2019, no complaints significantly on the Environmental safeguard or Occupational Safety was recorded.

Table 15: Summary of Grievance Redress

Type of Grievance	Details (Date, person, address, contact details, etc.)	Required Responsibility and Timing	Action, and Resolution
Old Issues from Previous Reports			
No			
New Issues from This Report			
No			

6. Conclusion and recommendation

6.1 Conclusion

39. The DAKWACO/PMU, CSC and construction contractors, in general, follow ADB safeguard policies and commitments in environment management plans/contractors' environment management plans of the uEMP as well as the Government regulations. However, there are some issues needing to be addressed in the coming months as follows:

- Inadequate PPE for workers during construction
- Delay in surface recover for the pipeline installation
- Lacking HSE information in the quarterly monitoring report
- Delay in the preparation and submission of SEMRs to ADB
- No sampling programs was conducted during the reporting period as required in the uEMP.

40. The responsibilities and timeframe of implementing and supervising the implementation of the corrective actions to address the issues mentioned above are presented in Table 7.

41. Public consultation and information disclosure are fully implemented by the PMU. PMU closely coordinated with local authorities in resolving complaints and accelerate construction progress. PMU and supervision consultants regularly visit the project sites; organize monthly meetings with contractors to remind related issues.

42. Up to the end of 2019, no significant issues in term of environmental and social impacts were occurred by the implementation of the project. There is no grievance in term of environmental and safety issues from community.

6.2 Recommendation

43. PMU and Eptisa consultants (CSC) observe, monitor fully all contractors' commitment of labour safety assurance, environment hygiene for project to achieve high efficiency about quality as well as environment requirements and locals in construction areas. However, the CMC notebook must be updated every day.

44. Contractors: implement full commitments in environment management plans/contractors' environment management plans about environment impact mitigation measurements, ADB safeguard policies, environment hygiene at the site; firm combination with local authority in announcement of construction progress and propaganda locals to acquire corridors.

45. Outstanding issues during this report period and corrective action are presented in Table 7. The related stakeholders need to allocate adequate resources to carry out effectively these actions.

Appendix A: *Detail of packages' divisions:*

➤ **Package DLCW-01**

- Intake structure construction: offshore manmade lagoon water intake type, masonry structure, water intake estimated for 02 phases 70,000 m³/day, length of water intake lagoon is 127.22, width is 4.36m.
- Raw pumping station construction: designed capacity for the first phase is 35,000 m³/day, second phase is 70,000 m³/day;
- Pumping station type: half on land haft submerge structure, submerged part is RC, on land part which is bricked with RC heat-insulation tile roof, contains 05 pumping unit separators of each one sized 4.65x2.1m. In the phase 01 there are 03 submerged pumping units Q=730 m³/h, H=70m.
- Raw water pipeline dimension is DN700-DI, total pipe length 6.222 km. Material is ductile iron pipe and fitting products.

➤ **Package DLCW02:**

Construct the phase I WTP with capacity of 35,000 m³/day including major items:

- WTP system, administration house, chemical house, pumping station:
- Reservoir 3,300 m³: built by RC, haft emerged haft submerged with dimension is 30x30m, submerged part height is 2.05m, emerged part height is 2.2m divided into 02 compartments which is 750m³ per each one, treated water compartment volume is 2,550m³.
- Backwash washing water tank: by RC, dimension 15.85x16.6m, high 3.7m; separated into 02 compartments with 02 submerged pumping units Q=50m³/h, H=15m placed inside.
- Sludge drying bed: masonry, 02 separated tanks; dimension per each tank is 38.6x14.6m, high 2.8m.
- Garage: steel frame, iron roof, area 14.4x4.6m.
- Transformer unit capacity 500 KVA, placed on RC foundation dimension 4.5x3.1m.
- Fence - guard booth: Major gate is 8.42m, sub-gate is 2.1m, fence length is 576,6m; guard booth built by brick and RC, heating insulation iron tile size 3.3x3.3m.
- Material of the treated water pipeline to the booster:
- Ductile iron pipe DN700 PN16 (connecting Tee) long L= 8,798 m.
- Ductile iron pipe DN700 PN16 (connecting Tee) long L= 3.163 m.
- Steel pipe DN700 wall thickness 10mm long L=239m.

➤ **Package DLCW03:**

Building the booster pumping station with details as below:

- Reservoir 4,500 m³;
- Booster pumping station combined chemical house capacity 25,000 m³.
- Substation capacity 1,000 KVA, backup generator capacity 1,256 KVA;
- Fence, guard booth.
- Treated water pipeline to distribution net.
- Ductile iron pipe DN700 PN16 (connecting K) long L= 5.230 m.

- Ductile iron pipe DN700 PN16 (connecting Tee) long = 2.005 m.
- Ductile iron pipe DN450 PN16 (connecting Tee) long L= 563 m.
- Steel pipes DN600 wall thickness 8mm, long L=69m.
- HDPE pipe DN280 PN12, 5 L=27m long

➤ **Package DLCW04**

Supply and install treated water transmission and distribution HDPE pipeline 61,527m long totally, divided into 07 lines as below:

- Line 01: Provincial road (PR) No. 02 (node 130-Q2 to node 51, node 01 to node 120), DN110-HDPE pipeline length is 5,920m and DN140-HDPE pipeline is 22m, pressure capacity is minimum PN 10.
- Line 02: PR2 (node 203-Q2 to node 136); National Road (NR)14 (node 136 to node 277); Road to Dray H'Ling Hydropower Station (from node 277 to node 366); path 545 (node 136 to node 530) Pipe dimensions are DN225-HDPE long 4,411m; DN160- HDPE long 847m; DN140-HDPE long 2,588m and DN110-HDPE long 39m. Minimum pressure capacity is PN10.
- Line 03: Roads of Buon M'rê-Buon Niêng (node 225 to node 453); Phan Huy Chu Street (node 453 to node 489) pipe dimension is DN110-HDPE long 2,638m and DN140-HDPE long: 2,320m. Minimum pressure capacity is PN10.
- Line 04: Phan Huy Chu Street (node 34-Q3 to node 621); Roads of Buon M're-Buôn Nieng (node 621 to node 690); inter-commune roads of Hoa Xuan and Hoa Phu (node 690 to node 790 and node 790 to node 800) pipe dimension is DN110-HDPE long 5,437m Minimum pressure capacity PN10; DN140-HDPE long 7,591m and DN355-HDPE long 2,070m Minimum pressure capacity PN16.
- Line 05: Inter-blocks' road (node 535 to node 861, node 861 to node 893 and node 861 to node 913) pipe dimension is DN110-HDPE long 3,507m Minimum pressure capacity PN10 and DN140-HDPE long 3,024m Minimum pressure capacity is PN10.
- Line 06: inter-commune roads of Hoa Khanh and Ea Kao (node 154-Q2 to node 1128) pipe dimension is DN140-HDPE. Total line length is 3,615m. Minimum pressure capacity PN10.
- Line 07: Y Wang Street (node 15-Q3 to node 1269); path 03- Vo Van Kiet Street (node 233-Q2 to node 1241) pipe dimensions are DN110-HDPE long 1,175m. Minimum pressure capacity PN10; DN140-HDPE long 4,302m, Minimum pressure capacity is PN10; DN160-HDPE long 5,127m. Minimum pressure capacity is PN16; DN225-HDPE long 1.316m. Minimum pressure capacity is PN16.

➤ **Package DLCW05:**

Building water supply system to Ea Kar town capacity 2,500m³/day including major structures:

- Raw water intake structure is offshored 98,5m, pier leading to pumping station is concreted, wide 1,6m, area size is 3.5x3.5m, 02 submerged pumping units $Q=105\text{m}^3/\text{h}$, $H=55\text{m}$. Raw water pipeline DN225-HDPE long 3,012m with pressure capacity PN16.
- Treatment system: RC vertical sludge drying includes 04 tanks with per each capacity is 4.8x4.8m and 7.6m high. One RC rapid sand filter compartment includes 04 tanks with per each capacity is 2.4x2.375m and 5.0m high.
- Reservoir 580 m^3 : RC, half emerge half submerge, area 13.2x13.2m, merged part is 1.35m high, emerged part is 2.1m high divided into 02 compartments: washed water compartment capacity 75m^3 and treated water compartment capacity 505 m^3 .
- 02 level pumping station and backwashing structures: bricked, RC frame, half emerged half submerged structures dimension is 4.2x9.9m. Emerged part is 4.2x16.5m, contained 02 horizontal axis centrifugal pumping units $Q=75\text{m}^3/\text{h}$, $H=35\text{m}$. 01 pumping unit $Q=107\text{ m}^3/\text{h}$, $H=15\text{m}$; 01 ventilation $Q=4,5\text{m}^3/\text{h}$, $H=5\text{m}$; 01 dewatering pump $Q=2\text{m}^3/\text{h}$, $H=10\text{m}$ for leaking water.
- Chemical house chlorine: 01 story, bricked, RC frame with heating insulation iron tile, area 4.2x16.5m; Space of Chlorine container 4.2x3.3m includes 05 chlorine tanks 50kg, 02 controllers of vacuum, 01 automatic transform device, 02 clorators, 02 ejectors 0-1 kg/g; Chemical house area is 4.4x13.2m, contained the equipment: 02 alum stirring machines 0.55kw-100v/p, 02 determiners 100l/h-40m, 02 soda stirring machines 0.55kW-100 v/p, 02 determined pumpers 50l/h-40m.
- Sludge drying bed: masonry, 02 containers, each one is 14.55x8.0m, 2.6m high
- Administration house: 02 stories, bricked, reinforced frame with heating insulation tile, area 12.9x11.7m.
- Guard booth and fence: guard booth is bricked, reinforced roof with insulation tile 3.3x3.3m
- Technical pipeline
- Electrical station: substation 250kV.
- Treated water pipeline dimension is from DN90-HDPE to DN280-HDPE, total length is 12.939km. Pipeline design.

Building water supply system capacity is $1,600\text{m}^3/\text{day}$ in Krong Nang town including major items:

- Electrodynamics system;
- Lighting system;
- Treated water distribution pipelines.

Build water supply system $1,000\text{m}^3/\text{day}$ in Buon Don District with major items as below:

- Building WTP including major structures: raw water intake, pumping stations, combination of treatment system, second level pumping station, treated water reservoir, chemical house, sludge container, administration house, garage, guard booth, store.

- Electrodynamics system;
- Lighting system;
- Treated water distribution pipeline