

Involuntary Resettlement Monitoring Report

7 Quarterly Report
July 2014

VIE: University of Science and Technology of Ha Noi
Development (New Model University) Project

Prepared by Trung Nguyen, Resettlement Specialist, for the Project Management Unit - University of Science and Technology of Ha Noi Development (USTHD) Project, Ministry of Education and Training and the Asian Development Bank.

**MINISTRY OF EDUCATION AND TRAINING
UNIVERSITY OF SCIENCE AND TECHNOLOGY OF HANOI
DEVELOPMENT (NEW MODEL UNIVERSITY) PROJECT
PMU-USTH
Loans No 2750/2751-VIE**

To: Mr. Norman LaRocque
Principal Education Specialist
Human and Social Development Division
Asian Development Bank

Tel: +632 632 5689

No. of pages: 52

Ref No: 253-2750/2751-VIE

Date: 31/7/2014

Subject: PMU-USTH – Independent Resettlement Report Quarter 2/2014

Dear Mr. Norman LaRocque,

We would like to send you Independent Resettlement Report Quarter 2/2014 for your information, review and record.

Sincerely,



Dr. Nguyen Van Ngu
Project Manager

CC: Ms. Donna Medenilla, Associate Project Officer
Human and Social Development Division
Southeast Asia Department

**Socialist Republic of Viet Nam
Ministry of Education and Training**

**University of Science and Technology of Hanoi Development (USTH)
(New Model University) Project
Loan No. 2750/2751-VIE**

Independent Resettlement Review Report No. 7

Reporting period: 2nd Quarter 2014

Prepared by Independent Resettlement Review Specialist

July 2014

ABBREVIATIONS

ADB	- Asian Development Bank
AH	- Affected Household
AP	- Affected Person
CPC	- City Peoples' Committee
DBCAR	- District Board of Compensation, Assistance and Resettlement
Ha Noi CPC	- Ha Noi People Committee
HHTP	- Hoa Lac High Tech Park
HHTP-MB	- Management Board of Hoa Lac High Tech Park
Tan Xa CPC	- Tan Xa Commune People's Committee
PMU-USTH	- Project Management Unit for USTH
DMS	- Detailed Measurement Survey
GOV	- Government of Vietnam
IRR	- Independent Resettlement Review
IOL	- Inventory of Losses
LURC	- Land Use Rights Certificate
MOET	- Ministry of Education and Training
MPI	- Ministry of Planning and Investment
MOF	- Ministry of Finance
MOST	- Ministry of Science and Technology
QD	- Decision
RCS	- Replacement Cost Study
RP	- Resettlement Plan
SES	- Socio-Economic Survey
STC	- Department of Finance
Thach That DPC	- Thach That District People's Committee
TNMT	- Natural Resource and Environment
UBND	- People Committee
USD	- US dollar
USTH	- University of Science and Technology of Hanoi
VND	- Vietnamese Dong

Table of Content

I.	Introduction.....	1
II.	Approach and Implementation	3
A.	Methods and Approachs	3
B.	Implementation.....	3
C.	Constraints and Measures	4
III.	Findings and Evaluation.....	5
A.	Scope and level of resettlement impact of the project.....	5
B.	Resettlement Plan - Implementation Progress	6
C.	Public consultation and awareness of resettlement policy and entitlements of Affected People (APs)	10
D.	DMS of affected assets and compensation payments as per policies in the approved RP ...	10
E.	Coordination of resettlement with construction schedule	11
F.	Land acquisition and transfer procedures.....	12
G.	Construction/re-building of replacement houses and structures on residual land or relocation to new sites.....	12
H.	Level of satisfaction of APs with the provisions and implementation of the RP	12
I.	Grievance redress (documentation, process, resolution and satisfaction of APs).....	13
J.	Effectiveness and sustainability of entitlements and income rehabilitation measures for APs	13
K.	Gender impacts and strategy	14
L.	Capacity of APs to restore/re-establish livelihoods and living standards. Special attention provided or to be provided to severely affected and vulnerable households	14
M.	Resettlement impacts caused during construction activities	15
N.	Participation of APs in RP planning, updating and implementation	15
O.	Institutional capacity, internal monitoring and reporting	16
P.	Source and flow of funds for compensation payments and allowances for APs or displaced APs	16
Q.	Replacement cost.....	16
R.	Arrangement of resettlement area	16
IV.	Recommendations	18
A.	Land acquisition and land hand-over	18
B.	Compensation Payment and resettlement supports and Settlement of complains.....	18
C.	Independent Resettlement Review Contract	18
D.	Income rehabilitation	18
E.	Preparation activities.....	18
F.	Coordination with construction activities	19

List of Tables

Table 1: Synthesis of activities performed during IRR No. 7 (July 2014)	4
Table 2: Scope and Level of Resettlement Impact of USTH Project.....	6
Table 3: Summary of compensation payment and assistance (by end of March 2014).....	8
Table 4: Summary of progress of land acquisition and transfer (by 15 July 2014)	9
Table 5: Summary on progress land recovery and hand over (2 nd Quarter 2014)	9
Table 6: Summary of compensation rates (2014)	11
Table 7: Summary of average income of AHs (July 2014)	14
Table 8: Summary of changes in main income sources from handicraft, business, sales of AHs before and after the receipt of compensation and supports.....	15
Table 10: Summary of compensation rate issued by the Hanoi CPC for year 2014 and the surveyed replacement costs (July2014)	16

List of Figures

Figure 1: Locations of areas affected by Project, including: USTH (1); Army Relocation Site (2); Relocation site of AHs (3).....	5
Figure 2: The land (yellow color) was handed over to USTH-PMU	7
Figure 3: Temporary Office for USTH-PMU and earth road surrounding the USTH	11

List of Annex

Annex 1: List of persons met by IRR Specialist	20
Annex 2: Questionnaire for Households Survey	21
Annex 3: List of Affected Households at 26 ha (Tan Xa) and 52.7 ha (Binh Yen)	27

I. Introduction

1. The University of Science and Technology of Hanoi Development (USTH) (New Model University) Project is funded by the Asian Development Bank (ADB) with a total budget of USD 210 million, plus USD 3 million for land clearance to be paid by the Vietnamese Government. The Project aims to: (i) set up and pilot a new policy framework for the governance, financing and quality assurance of new-model research universities; (ii) establish and develop one universities as centers of research and teaching excellence that create dynamic synergies between research and teaching by strengthening university-industry linkages in science and technology fields, as well as by presenting a "public-private partnership model" of higher education/research institutions. The tentative duration for project implementation is 05 years (2011–2017). The Project has four outputs as below:

- Output A: an effective management and governance system for the USTH will be developed and implemented;
- Output B: systems to promote high-quality and relevant academic programs at the USTH will be developed and implemented;
- Output C: physical facilities at the USTH will be constructed and outfitted.
- Output D: effective project management and implementation.

2. The Project is located in Hoa Lac High Tech Park (HHTP)¹. Implementation of Output C results in involuntary resettlement of affected person (AP) through loss of land and assets of households, utilities and organizations at (i) the project site with an area of 65 hectares (26 hectares at Tan Xa and 39 hectares at Thach Hoa commune which is currently managed by 02 military units); and (ii) the land of 52.7 hectares at Binh Yen commune which is allocated as the relocation site for the 02 military units (losing the 39 ha).

3. Project Resettlement Plan (RP) was completed in November 2010. The implementation of resettlement activities was performed in 2008 and 2010 as the land area for the USTH is within the land required for the Hoa Lac HHTP. Implementation of RP for the USTH land restarted and performed continuously from 2012 to now.

4. The updated RP was approved by ADB in September 2013 and approved by MOET in October 2013. Basically, there is no difference between the policies and interests of the affected person (AP) as given in RP and updated RP. However, there have been increases in the scope of project involuntary resettlement impacts and budget due to the acquisition of 52.7 ha at Binh Yen commune. The total estimated budget for the implementation of the updated RP is USD 24.4 million.

5. The implementation of resettlement activities so far have been undertaken following the requirements given in the updated RP and ADB policy on resettlement (SPS 2009). With close instruction and direction of the Prime Minister; Ministry of Planning and Investment; Ha Noi People's Committee, Thach That District People's Committee in allocating the necessary funds for the RP implementation, the Thach That DCARB and Hoa Lac Hi-Tech Park Management Board have been actively implementing the activities as per the updated RP.

6. During the 2nd Quarter 2014, Thach That DCARB paid compensation to 19 AHs at Yen Binh commune with a total land recovered of 2.6 hectares. From 1-15/7/2014 Thach That DCARB recovered 3.6 hectares of 24 AHs. Total land recovered by 15 July 2014 was 67.8 hectares (26 hectares at Tan Xa commune and 41.8 hectares at Binh Yen commune).

¹HHTP has total land area of 1,432 ha, incl. land of communes of: Thach Hoa; Tan Xa; Ha Bang; Dong Truc of Thach That Dist., and Phu Cat of Quoc Oai Dist., Ha Noi City.

The remaining land at Binh Yen commune that need to be recovered in the coming months is 10.9 hectares.

7. During the 2nd Quarter 2014 there were no hand over of clean land from the Hoa Lac HHTP to the USTH or from the Thach That DPC to the military units. Total cleared land handed over to PMU-USTH is 46 hectares, equivalent to 70.7% of the total land required for the project (65 ha). Of which, 26 hectares at the Tan Xa commune and 20 hectares out of the 39 hectares managed by the 02 military units.

II. Approach and Implementation

A. Methods and Approaches

8. Methods and approaches used during the 7th IRR were as below:
- a. Study document of: (i) Updated RP; (ii) reports, documents of HHTP-MB; Thach That DBCAR (decisions, compensation, DMS; (iii) concerned legal document of land acquisition of Vietnam and Hanoi CPC;
 - b. Household survey targeted at 100% of severe AHs in order to collect information on demography, socio-economic, public consultation, compensation and payment; grievance redressing.
 - c. In-depth interviews with key persons of USTH-PMU; HHTP-MB; Thach That DBCAR; Tan Xa and Binh Yen CPC.
 - d. 02 group discussions were conducted with AHs for collecting necessary information on RP implementation. Each group discussion included from 12-15 persons
 - e. Site inspections were conducted at: Project area 65 hectares (Tan Xa and Thach Hoa); 52,7 hectares area (Binh Yen), 36.04 hectares area (Binh Yen).

B. Implementation

9. The IRR Specialist worked closely with PMU-USTH, HHTP-MB, Thach That DBCAR and CPC of Tan Xa and Binh Yen to collect data, documents (list of AHs, DMS, compensation plans, etc.) and information on the status of socio-economic of the communes.
10. Additionally, the IRR Specialist conducted a number of activities as below (see Table 1 for details):
- *Household survey*: All AHs caused by the Project lose more than 10% of their agricultural and forestland and some need to be relocated. Therefore, survey has been carried out for 100% (n=426) of severe AHs. Of which, 118 (100%) AHs lose land at the 26 hectares area and 308 (100%) AHs at the 52.7 hectares area.
 - Group discussions were conducted at Tan Xa commune and Binh Yen commune.
 - In-depth interviews with key officers of PMU-USTH, Thach That DBCAR, Tan Xa CPC, Binh Yen Binh CPC, and HHTP-MB.
 - Site inspections at the project affected areas, including: the 65 hectares, the 52.7 hectares, and the 36.04 hectares (resettlement area).
 - Information collected from questionnaire, group discussion and interviews with key people was processed, analyzed to monitor and evaluate the implementation of the Updated RP.

Table 1: Synthesis of activities performed during IRR No.7 (July 2014)

No	Activities	Time
1	Collect and study data, documents	25/6-5/7/2014
2	Survey implementation	5-15/7/2014
3	Group discussion	10/7/2014
4	Interview key officers	20-22/7/2014
5	Site survey	15/7/2014
6	Study, analyze and process collected information	15-20/7/2014
7	Writing report	22-30/7/2014

Source: IRR Report, July 2014

C. Constraints and Measures

11. The IRR Specialist received active and effective supports from PMU-USTH; HHTP-MB, Thach That DBCAR, CPCs of Tan Xa and Binh Yen through provision of documents, data on progress of resettlement implementation; organization of interviews and group discussions. However, during the independent review, there have been a number of constrains, difficulties were found and measures to overcome these difficulties are as below:

- Information and documents relating to land acquisition for the USTH Project and the 02 military units provided by Thach That DBCAR are huge and complicated. The IRR Specialist worked closely with officers of Thach That DPC, Tan Xa and Binh Yen CPCs to refine, categorize, and identify specifically AHs and make a full list of affected assets owned by all households.
- Thach That DCARB implements resettlement activities not only for the USTH site but also for other projects under the Hoa Lac HHTP and thus the identification and specialization of AHs' area by the USTH area and by the adjacent projects. To overcome this problem the IRR Specialist worked closely with cadastral officials of the CPCs of Tan Xa and Binh Yen and staff of Thach That DCARB and officers of Hoa Lac HHTP.

III. Findings and Evaluation

A. Scope and level of resettlement impact of the project

12. As per the updated RP, total affected area for the project is 117.7 hectares, including: (i) 26 hectares at Tan Xa commune; (ii) 39 hectares at Thach Hoa commune (currently managed by the 02 military units); and (iii) 52.7 hectares at Binh Yen commune arranged relocation site for the 02 military units. Map of locations affected by the USTH Project is given at Figure 1.

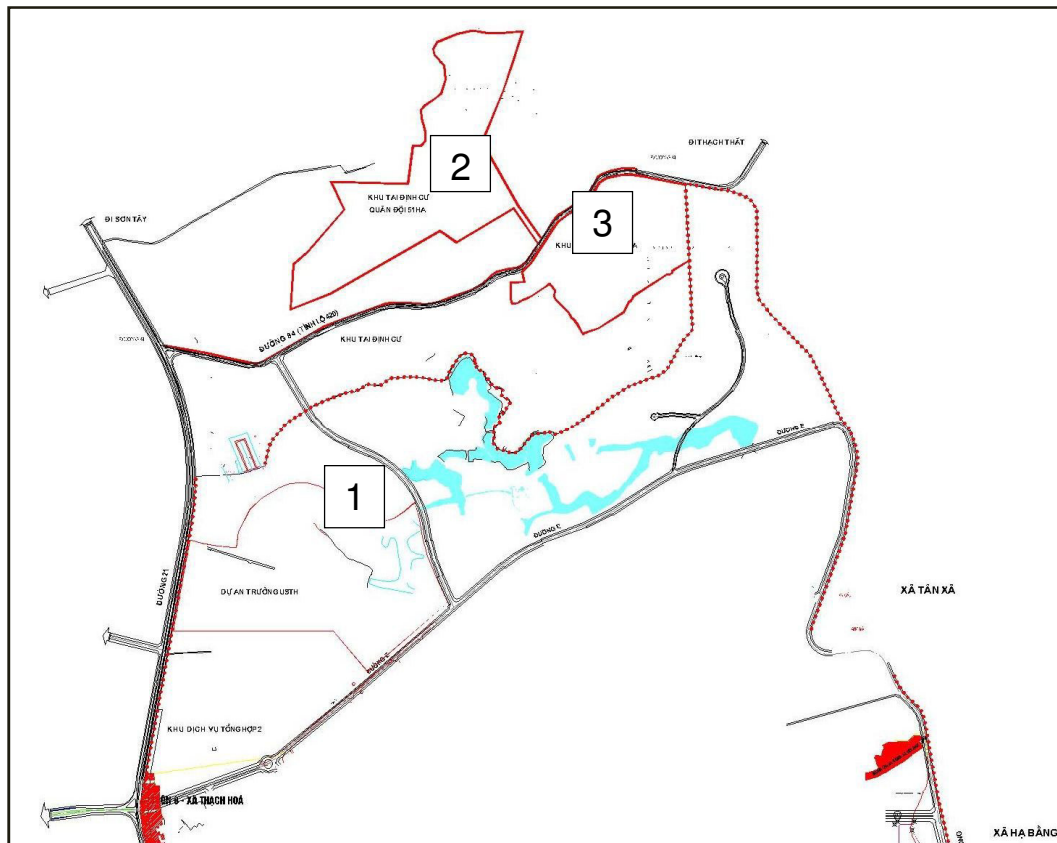


Figure 1: Locations of areas affected by Project, including: USTH (1); Army Relocation Site (2); Relocation site of AHs (3)

13. There have 426 AHs (1,902 people) affected by the Project. Of Which, 373 AHs (1,635 people) will be affected through loss of agricultural land, agricultural land (forest land, garden land and paddy land); 54 households (267 people) affected by the loss of residential land, house and structures, 373 AHs affected by the loss of crops, trees. Synthesis resettlement impacts of the Project are presented in Table 2:

Table 2: Scope and Level of Resettlement Impact of USTH Project

No	Items	Unit	USTH site		Army relocation site	Total
			26 ha	39 ha		
1	Residential land	m ² (hh)	200 (1)	-	10.521 (52)	10.721 (53)
2	Agricultural land of Ahs	m ² (hh)				
2.1	Perennial land					
	- Compensation before 6/2013	m ² (hh)	82.668 (98)	-	137.425 (70)	220.093 (168)
	- Not yet compensation	m ² (hh)	19.205 (10)	-	204.872 (134)	224,077 (144)
2.2	Forest land					
	- Compensation before 6/2013	m ² (hh)	89.113 (7)	-	0	89.113 (7)
	- Not yet compensation	m ² (hh)	15.595 (2)	-	122.676 (52)	138.271 (54)
3	Public land managed by the CPC					
	- Compensation before 6/2013		53.200	-	51.600	104.800
	- Not yet compensation		0	-	0	0
4	Buildings affected (100%)	m ² (hh)	200 (2*)	-	8.989 (52)	9.189 (54)
5	Affected structures **					
	- Toilet	m ² (hh)	46 (3)	-	815 (52)	861 (55)
	- Gate	No	3 (3)	-	52 (52)	55 (55)
	- Yard	m ² (hh)	250 (3)	-	6.224 (52)	6.474 (55)
	- Fence	m ² (hh)	670 (3)	-	4.795 (52)	5465 (55)
6	Trees and crops ***					
	- Fruits	tree	195	-	55	250
	- Timber trees	tree	2.031	-	2.450	4.481
	- Vegetables /cassava,...	m ²	101.918	-	342.297	
7	Impact on business	hh	0	-	0	0
8	Graves	no	0	-	203	203

Source: Updated RP September 2013

Note: * 01 households having houses built on forest land, ** and *** figures include assets will be compensated and compensated; (-) compensation for land and assets of 02 military units shall be included in the scope of the Project that will be done by another project funded by the Government. Item 8 all the graves were moved in 2010. The amount paid for each moved grave was VND 5 million

B. Resettlement Plan- Implementation Progress

14. As scheduled, by June 2013, the USTH will be granted a decision that shall ensure that USTH has legal rights over the land allocated for their campus and the right to commence construction of the campus in accordance with the agreed construction timeframe. However, progress of resettlement implementation has not yet been as scheduled.

15. Resettlement progress made during the 2nd Quarter 2014 are as below:

- *Public consultations:* All plans on resettlement compensation and support for the remaining AHs were sent to the AHs concerned and publicized at the Thach That DCARB and Binh Yen CPC. Thach That DCARB, in coordination with Hoa Lac HHTP and Binh Yen CPC conducted public consultations with the AHs' participation to explain and clarify all issues and consult with AHs.

- *Payment of compensation and resettlement assistance to APs:* The total land of AHs and CPCs of Tan Xa and Binh Yen that need to be recovered 78.7 hectares (26 hectares at Tan Xa commune and 52.7 hectares at Binh Yen commune). The 26 hectares area were recovered in 2013. Regards to the 52.7 hectares, during the 2nd Quarter 2014 the Thach That DCARB made compensation and supports to 19 AHs and recovered 2.6 hectares of agricultural land. Details of compensation progress are shown in Table 3. During the period from 1-15 July 2014 the Thach That DCARB recovered additional 3.6 hectares, increasing the recovered land by 15 July 2014 is 41.8 hectares out of 52.7 hectares at Binh Yen Commune. The remaining land which needs to be recovered at Binh Yen commune is 10.9 hectares.
- *Progress of land acquisition and transfer:* Progress on land recovery and hand over are by end of 2nd Quarter 2014 are presented in Table 4 and 5 and location of land handed over to USTH-PMU is shown in Figure 2.
 - i. The total land area has been recovered by the Thach That DCARB from AHs and CPCs of Tan Xa and Binh Yen by end of June 2014 is 64.2 hectares. Of which, 26 hectares at Tan Xa commune and 38.2 hectares at the Army Relocation Area.
 - ii. Decision on land acquisition of 39 hectares area of land which is currently managed by the 02 military units.
 - iii. Hoa Lac HHTP-MB handed over the total land area of 46 hectares (equivalent to 87.2% out of the 65 hectares to be allocated for the USTH), including 26 hectares at Tan Xa commune and 20 hectares area out of 39 hectares managed by the 02 military units to the USTH-PMU.
 - iv. Expectedly, during the 3rd Quarter the Thach That DPC shall handle part of the recovered land at Binh Yen Commune to the Artillery Command and these two military units can undertake necessary constructions.

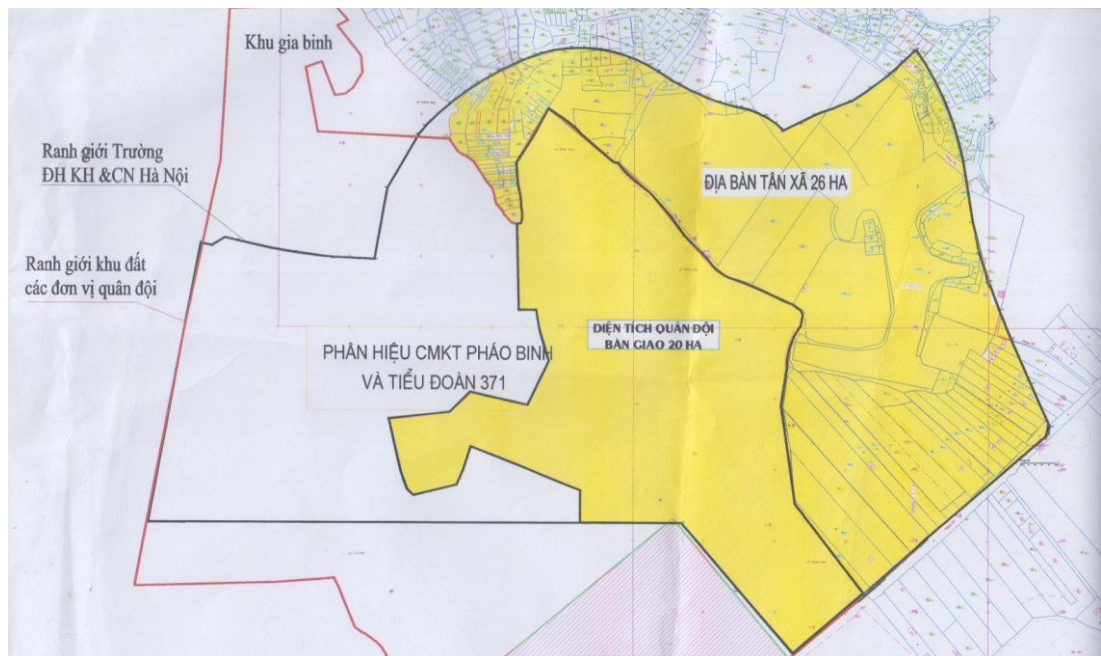


Figure 2: The land (yellow color) was handed over to USTH-PMU

Source: USTH-PMU

Table 3: Summary of compensation payment and assistance (by end of March 2014)

Affected area	Affected object	Unit	Year 2008	Year 2012	Year 2013	Year 2014			Total
						1 st Quarter	2 nd Quarter	1-15 July	
1. 26 hectares	Residential land	ha [hh]	0 [0]	0 [0]	0.02 [1]	-	-	-	0.02 [1]
	Agricultural land	ha [hh]	5.3 [23]	2.98 [51]	14.12 [44]	-	-	-	22,4 [118]
	Public land	Ha	0	3.6	0	-	-	-	3,6
Total 1		Ha	5.3	6.58	14.14	-	-	-	26,02
2. 39 hectares	Public land	-	-	-	-	-	-	-	
Total 2		Ha	-	-	-	-	-	-	-
3. 52.7 hectares	Residential land	ha [hh]	0 [0]	0 [0]	0 [0]	0 [0]	0 [0]	0 [0]	0 [0]
	Agricultural land	ha [hh]	0 [0]	9.38 [117]	11.9 [283]	8,93 [57]	2.6 [19]	3.6 [24]	36.4 [293]
	Public land	ha	0	2.57	2.84	0	0	0	5.41
Total 3		ha	0	11.95	14.74	8,93	2.6	3.6	41.8
Total 1, 2, 3		ha	0	18.53	28.88	8,93	2.6	3.6	67,8

Source: IRR specialist summarized data provided by Thach That DCARB (July 2014)

Note: (-) not applicable; hh: household; ha: hectares

Table 4: Summary of progress of land acquisition and transfer (by 15 July 2014)

Item	USTH site			Army relocation site (52.7 ha)
	26 ha (Tan Xa)	39 ha (Thach Hoa)	Total	
Land recovered by Thach That DCARB	26	39	65	41.8 (+6.2)
Land not yet recovered by Thach That DCARB	0	0	0	10.9
Clean land handed over to HHTP-MB	26	20	46	-
Clean land handed over to the Artillery Command	-	-	-	0
Clean land HHTP-MB handed over to USTH-PMU	26	20	46	-
Clean land not yet handed over to USTH-PMU/02 military units	0	19	19	52.7

c

*Specialist summarized data provided by Thach That DCARB (July 2014)**Note: (-) not applicable; hh: household; ha: hectares***Table 5: Summary on progress land recovery and hand over (2nd Quarter 2014)**

Land recovery / hand over	Progress on land recovery / hand over									Total
	Year 2013			1 st Quarter			2 nd Quarter			
	26 ha	39 ha	52,7 ha	26 ha	39 ha	52,7 ha	26 ha	39 ha	52,7 ha	117.7 ha
Land recovered by Thach That DCARB	26	39	26.69	-	-	18,9	-	0	38.2	103.2
Land handed over to HHTP-MB	26	20	-	-	0	-	-	0	-	46
Land handed over to USTH-PMU	26	20	-	-	0	-	-	0	-	46
Land handed over to military units	-	-	0	-	-	0	-	-	0	0

Source: IRR specialist summarized data provided by Thach That DCARB (July 2014) Note: (-) not applicable; ha: hectares. Land recovered by 15 July is 106.8 hectares

C. Public consultation and awareness of resettlement policy and entitlements of Affected People (APs)

16. Results of the 7thIRR (2ndQuarter 2014) showed that 100% AHs at the Army Relocation Area were consulted and provided with information on resettlement policy and the entitlements through the following activities:

- Participated at public meetings at CPCs to obtain information on land acquisition for the USTH and the resettlement area for the 02 military units. AHs attended at least 02 public consultation meetings (before and after DMS).
- Be provided with information on compensation, support and resettlement policies of Vietnam.
- Participated at DMS; checked and signed on DMS paper.
- Approached compensation and support plan developed by Thach That DBCAR for consideration before actions. AHs were clearly explained of compensation and resettlement policies, calculation of compensation amount.

D. DMS of affected assets and compensation payments as per policies in the approved RP

DMS of affected assets

17. DMS were completed in 2013 and complied with requirements of Viet Nam and the updated RP.

Compensation payments as per policies in the approved RP

18. Payment of compensation for these households were made under the regulations of the Viet Nam and Ha Noi CPC on land acquisition compensation and resettlement, as follows:

- Decision No. 108/2009/QD-UBND (Decision 108) dated 29 September 2009 by Ha Noi CPC on compensation, assistance and resettlement due to land recovery by the State in Ha Noi City.
- Document No. 11056/UBND-TNMT dated 16 November 2009 by Ha Noi CPC
- Document No. 3081/UBND-TNMT dated 27 April 2011 by Ha Noi CPC
- Document No. 7331/UBND-TNMT dated 31 August 2011 by Ha Noi CPC on supplementary of regulations on compensation, assistance and resettlement to settle issues, constraints arisen at Thach That District.
- Document No. 6323/STC-BG (Document No. 6323) dated 29 December 2011 by Ha Noi DOF on unit rate for compensation, assistance for trees, crops etc. on land for land recovery in Ha Noi City in 2012.
- Decision No. 63/2013/QD-UBND (Decision No. 63) dated 25 December 2013 by Ha Noi CPC on the issuance of land prices in Ha Noi City (2014).

19. As the above regulations, compensation rate for agricultural land at Binh Yen commune are as below. In general, there have been no change on compensation rate for land types as specified at price list for Year 2014 and Year 2013:

Table 6: Summary of compensation rates (2014)

No.	Type of assets	Unit	Unit price (VND)
1	Residential land	m ²	700,000
2	Business, production, non-agricultural land	m ²	490,000
3	Agricultural land for rice planting and annual crop	m ²	105,000
3	Agricultural land for long term crop	m ²	98.000
4	Aquaculture land	m ²	84.000

Source: Summarize content of Decision 63 issued by the Ha Noi CPC (April 2014)

20. Results of the household survey of AHs who received compensation resettlement support in 2nd Quarter 2014 at Binh Yen commune showed that the payment of compensation resettlement and support was complied with the Updated RP and Viet Nam regulation as follows:

- Compensation rates for land and property applied in Year 2014 following compensation rates specified at Decision 63. Results of Replacement Cost Survey showed that in 2014, there have no significant fluctuations on price of land and property within the project area and overall compensation rates and supports under the Decision 63 were equivalent replacement cost.
- Thach That DCARB collaborated with Binh Yen CPC to make payment on compensation and support to AHs at office of Binh Yen CPC.
- Payment on resettlement compensation and support to AHs was made in single time, immediately after their legal representatives signed on receipt of compensation payment and support and hand over land to the Thach That DCARB.
- Rates on compensation, resettlement assistance were calculated and paid to APs on land and crops are equal to replacement costs and do not include all types of taxes and fees associated. Compensation rates which were applied on asset classes and structures (fences homes, ...) are equal to replacement costs, excluding depreciation costs, demolition costs, ...
- 100% AHs who received compensation payments said that payments were made fast, convenient and comply with the Vietnam's regulations.

E. Coordination of resettlement with construction schedule

21. By end of 2nd Quarter 2014, USTH-PMU basically completed construction of temporary office for the PMU-USTH

22. Expectedly, during the 3rd Quarter 2014 PMU-USTH shall implement packages on the construction of fence and road surrounding the clean land.



Figure 3: Temporary Office for USTH-PMU and earth road surrounding the USTH

23. Generally, construction activities have been undertaken in line with implementation of the resettlement activities aiming to ensure the principle that all construction works will be carried out on the land where compensation payments and supports are fulfilled and there is no dispute over that land.

F. Land acquisition and transfer procedures

24. Procedures on land acquisition comply with requirements of ADB, Vietnam and Hanoi CPC. Details are as below:

- Thach That DPC issues land recovery notification to AHs.
- Thach That DPC issues decision on the establishment of committee on compensation and land recovery; task teams.
- Thach That DPC approves and allocate fund for compensation, assistance and resettlement.
- Thach That DPC prepares, approve detail plan on land recovery; verification of cost estimate for the implementation of compensation, assistance and resettlement.
- Thach That DCARB requests AHs to state, provide information on affected assets; detail measurements of actual affected asset and verification of declaration.
- Thach That DCARB prepares, publicizes plan on compensation, assistance and resettlement for comment, etc.
- Thach That DCARB finalizes and verify detailed plan on compensation, assistance, resettlement.
- Thach That DPC issue decision on land recovery, approve plan on compensation, assistance and resettlement; public statement of plan and deliver notice on payment of compensation and hand over of land.
- Thach That DPC made payment of compensation, assistance and arrangement of resettlement site to AHs.
- AHs hand over land to Thach That DCARB as per decision of Thach That DPC.

25. Once Thach That DCARB completes payment of compensation and recovery of land from AHs. Thach That DPC shall arrange necessary procedures to hand over land to HHTP-MB who will in turn hand over clean land to PMU-USTH.

G. Construction/re-building of replacement houses and structures on residual land or relocation to new sites

26. The Thach That DCARB made compensation payment to 01 AH (Household head Mr. Nguyen Tien Dung) who lost residential land, house or assets. This household also received assistance support (in cash) for house renting for the duration of 06 months. Mr. Dung has no plan for the construction of new house at the Resettlement Area.

H. Level of satisfaction of APs with the provisions and implementation of the RP

27. In principle, almost all surveyed AHs satisfied with the implementation of the resettlement activities of the Thach That DCARB. With such compensation and support received from the Thach That DCARB they can positively take part in training courses or implement business, production, etc. Some AHs have not yet received the compensation and support from the Thach That DCARB since they expect that the compensation rate or support would be better as the implementation of the new Land Law which came into effect on 1 July 2014. Some others have not yet received the compensation payment and support due to dispute within their family members or with their neighbors, etc.

I. Grievance redress (documentation, process, resolution and satisfaction of APs)

28. Result of household survey and public consultation on the implementation of the Updated RP showed that there received 95 complaints, which are mainly related to the legal status of agricultural lands of AHs at the Army Relocation Area. Main reasons of these cases are that some AHs exchanged the use of their land plots at different location with no official notice made to local authority or lack of supporting document to verify the source of households' land plots, etc. The Thach That DCARB has coordinated effectively with the Binh Yen CPC, and relevant authorities to work with these AHs to handle all these complain and below are results of the settlement.

- Completed the settlement of complains of 53 land plots (20 AHs), including: (i) AHs exchange land plots without legal acceptance of relevant authorities; (ii) illegal use of public land. All those AHs are satisfied with settlement measures of the Thach That DCARB's, Thach That DPC and Binh Yen Commune.
- Transfer complains document of 12 land plots (04 AHs) due to dispute on inheriting right between family members to the Thach That for necessary settlement.
- Temporary cancel the recovery of 30 agricultural land plots (8 AHs) since those AHs are now facing with difficulties (old family members are seriously sick or suffered from fatal disease, etc.).

J. Effectiveness and sustainability of entitlements and income rehabilitation measures for APs

29. Improvement measures and income restoration for APs at communes of Tan Xa and Binh Yen includes: (i) support in cash up to 3-5 times the compensation rate on agricultural land (approximately 525,000 VND/m² of paddy land), (ii) provisions of vocational training and job introduction free of charge to APs to help them to change their job and income rehabilitation as soon as possible.

30. Vocational trainings and employment for rural workers have been made as per Decision 1956/QD-TTg of 27 November 2009 by the Prime Minister; Decision No. 1201/QD-TTg of 31 August 2012 by the Prime Minister on the approval of the national target program to create jobs and vocational for the period from 2012-2015. Department of Labor, Invalid and Social Affair organized training courses for employees of the Thach That District, particularly households affected due to loss of land for projects within the District for 364 persons (2012); 1,247 persons (2013). During 1st and 2nd Quarter 2014, the Thach That DOLISA delivered 20 vocational courses for 700 persons. The main subjects are taught including: welding, electric, sewing, etc.

31. The household survey (July 2014) showed that the average income of AHs who received compensation and assistance has been improved. Percentage of households having incomes below VND 9 million in Tan Xa Commune felt from 4.2% to 3.4% (Tan Xa commune) and from 2.8% to 2.4% (Binh Yen commune). An increase of approximately 1% is recorded for AHs who are having income range from VND 10-12 million. Details are given at the table below:

Table 7: Summary of average income of AHs (July 2014)

Affected areas	Unit	Average household annual income (million VND)						Total
		< 9	10-12	13-19	20-29	30-49	50+	
1/ USTH								
July 2014	AHs	4	29	29	28	24	4	118
	%	3.4	24.6	24.6	23.7	20.3	3.4	100.0
April 2014	AHs	5	28	28	28	25	4	118
	%	4.2	23.7	23.7	23.7	21.2	3.4	100.0
December 2013*	AHs	6	26	28	28	25	5	118
	%	5.1	22.0	23.7	23.7	21.2	4.2	100.0
June 2013**	AHs	7	27	26	28	25	5	118
	%	5.9	22.9	22.0	23.7	21.2	4.2	100.0
2/ Army Relocation Area								
July 2014	AHs	7	40	87	76	73	10	293
	%	2.4	13.7	29.7	25.9	24.9	3.4	100.0
April 2014	AHs	8	36	86	75	71	12	288
	%	2.8	12.5	29.9	26.0	24.7	4.2	100.0
December 2013*	AHs	8	33	85	75	71	11	283
	%	2.8	11.7	30.0	26.5	25.1	3.9	100.0
June 2013**	AHs	10	37	92	81	76	12	308
	%	3.2	12.0	29.9	26.3	24.7	3.9	100.0

Source: IRR 2st Quarter. Note: * Household survey, January 2014; ** Updated RP, September 2013

K. Gender impacts and strategy

32. Due to the involuntary resettlement caused by the USTH Project, most women will be affected due to losses of residential, agricultural land, trees and crops and they will suffer more than male APs in finding new employment and stabilize livelihood, etc. Such impacts are summarized as below: Results of household survey showed that prior to the receipt of payment of compensation and support most female APs participating in secondary professions such as sewing, trade, small business or work for production facilities such as bamboo, rattan, carpentry, construction. Female APs who work in agricultural production such as rice, maize, potato, cassava can create low income and most of the time is unstable.

33. A number of supports to female APs include vocational training and job introduction for female APs to companies located within the Thach That district such as: Ha Noi Investment and Development Joint Stock Company (JSC); YONGFS Co., Ltd., Fashion and Development JSC., Thach That DPC and Ha Noi CPC.

L. Capacity of APs to restore/re-establish livelihoods and living standards. Special attention provided or to be provided to severely affected and vulnerable households

34. Results of household survey of AHs who received compensation and transfer agricultural land at Tan Xa and Binh Yen communes showed that those households are severe AHs (losing over 10% of their agricultural land or residential land). Land acquired by the Project are poor quality soil and are only used for growing crops and yields low values (cassava, potatoes, maize) and income from agricultural operations on the affected land is negligible compared to their income from other sub-sectors. Most of the APs' income have been generated mostly from craft activities, business, small business, service, farming, ...

35. Structures and main income of AHs by 2nd Quarter 2014 have been improved as compared to the 1st Quarter 2014. Ratio of households having income from handicraft, small business, trading increased from 82.5% to 87.3% (Tan Xa commune) and from 71.8% to

82.6%(Binh Yen commune). Summary of changes of main income of the AHs at Tan Xa and Binh Yen commune and are presented in the table next page:

Table 8: Summary of changes in main income sources from handicraft, business, sales of AHs before and after the receipt of compensation and supports

Location	Main incomes from handicraft, small business, sales (%)						
	Y2012		Y2013			Y2014	
	4th Quarter	1st Quarter	2nd Quarter	3rd Quarter	4th Quarter	1st Quarter	2 nd Quarter
26 hectares	70,6	76,5	77.5	77.5	79.3	82,5	87.3
52.7 hectares	59	62,4	63,5	63,5	67,1	71,8	82.6

Source: IRR, 2nd Quarter 2014 (July 2014)

36. Generally, ability on restoration of AHs' income is fairly firm due to the following reasons:

- Thach That District has 01 industrial zone, 08 industrial sites which have been put into operation; 09 recognized handicraft villages, 827 enterprises and 20,855 households having stable production and business. This is the "attracting point", for creating a number of employments for local workers, including workers whose land plots were acquired by the State recently.
- Communes of Tan Xa and Binh Yen are located adjacent to the 09 traditional villages of the Thach That District of: (1) Phung Xa (mechanical & metal); (2) Huu Bang (carpentry, industrial sewing); (3) Chang Son (carpentry); (4) Canh Nau (carpentry & civil construction); (5) Di Nau (carpentry & civil construction); (6) Phu Hoa (rattan and bamboo woven); (7) Thai Hoa (rattan and bamboo woven); (8) Binh Xa (rattan and bambo woven); (9) Thach Xa ("Che Lam" cake). These traditional villages are currently developing and have a high demand for unskilled workers as well as workers with skills and the ability, which are appropriate to cultural characteristics of the APs.
- Communes of Tan Xa and Binh Yen are located about 30 km far from Hanoi City which have a high demand for employments and create employment opportunities for AHs of the Project. Some types of labor such as construction, carpentry, industrial hygiene, industrial sewing, selling, guards, etc. are appropriate for these APs.
- CPCs of Tan Xa and Binh Yen are currently studying agricultural production models which have high economic value in order to guide the APs, especially those APs by the Project so as they can gradually learn and apply these models in near future.
- Thach That Division of Labors, Invalids and Social Affairs are developing programs that are expected to assist the APs of the Project to restore their livelihood.
- Besides, AHs received considerable money from compensation and supports they have opportunities and motivations to improve their living condition and income restoration for themselves and the families.

M. Resettlement impacts caused during construction activities

37. There have been no construction activities made at the 52.7 hectares area.

38. PMU-USTH almost completes the development of the temporary project office at the clean land area (46 hectares). Scope and level of construction is minor (approximately 500 m²) which is far from the residential areas and therefore there have been no negative resettlement impacts recorded so far.

N. Participation of APs in RP planning, updating and implementation

39. Results of household survey showed that all APs participated in RP preparation and RP update via responding to household surveys, focus group discussion, public consultation, etc. During public consultations, all APs were provided with information and consulted on the project's resettlement policies, grievance procedures and redressing and entitlements of APs.

O. Institutional capacity, internal monitoring and reporting

40. Resettlement activities have been implemented with participation of: MOET, HHTP-MB, Thach That DPC, Thach That DBCAR, Ha Noi DBCAR. These agencies are capable to carry out the updated RP.

41. Internal resettlement monitoring Specialist have conducted internal monitoring activities and prepared Internal Monitoring Report for the 2nd Quarter 2014.

42. In general, the internal resettlement monitoring reports showing internal indicators includes: (i) number of AHs classified by the type of impact, districts, communes, villages, and the status of payment of compensation, relocation AH and livelihood restoration plans; (ii) the status of cash disbursement and distribution of land, the resettlement; (iii) funds are allocated and disbursed to: a) resettlement program activities, and b) the activity compensation, support and resettlement; (iv) activities, level of participation, results and issues related to public consultation; (v) status and result of complaints handling and outstanding issues; and (vi) issue of implementation, including delays, understaffed or incompetent, insufficient budget.

P. Source and flow of funds for compensation payments and allowances for APs or displaced APs

43. Budget for compensation payment and assistance for APs by HHTP Project (incl. the USTH Project) is allocated from Stage Budget and given to the Thach That DBCAR. The HHTP-MB prioritized the allocated budget for the implementation of DMS, verification of affected lands and assets and compensation and support to AHs.

44. Budget required for the compensation payment has been provided sufficiently for the payment of compensation and support to AHs at the Army Relocation Area. Prime Minister has directed Ministry of Planning and Investment and Ministry of Finance to arrange sufficient fund to the Ministry of Defense to implement the project on construction of new facilities for the two military units at the 52.7 hectares which will then help to speed up the hand over of the remaining land (19 hectares) to the PMU-USTH (Document No. 995/TTg-KTN dated 18 June 2014).

Q. Replacement cost

45. As per the replacement cost survey (July 2014), during the 2nd Quarter 2014 there were no changes on costs of land and asset at the Project affected area of Binh Yen commune. The price is similar to rates issued by the Ha Noi CPC, as follows:

Table 9: Summary of compensation rate issued by the Hanoi CPC for year 2014 and the surveyed replacement costs (July 2014)

No.	Type of assets	Unit	Unit Price by Hanoi CPC in 2013 (VND)	Replacement Cost (VND)
1	Agricultural land	VND/m ²	105,000	104,000-106,500
2	Agricultural land for annual crop	VND/m ²	98,000	97,500-99,500
3	Compensation rate for rice	VND/m ²	7,000	6,900-7,500

Source: Replacement cost survey (July 2014)

R. Arrangement of resettlement area

46. One (01) resettlement area which is located next to Road No. 84 at Binh Yen Commune with area of 36.04 hectares has been developed for relocation of AHs by projects within the HHTP area. This resettlement area was equipped with infrastructure such as internal roads; basic water supply; drainage and basic electricity; market; cultural house, etc.
47. Once AHs accept the resettlement plots (land plot of average 200m²) they can undertake necessary procedures as required by the regulations of Vietnam Government and Hanoi. DPC to construct house on that land. Thach That DPC has committed to provide power to households who build houses at the Resettlement Area. Households will bear all connection cost costs connected from their house to the power meter.
48. Currently, there have been no piped water supply system for the resettlement area as well as surrounding areas, Thach That DPC plans to support each relocated households the sum of VND 6-10 million for the development of water well.

IV. Recommendations

A. Land acquisition and land hand-over

49. The Thach That DPC and the HHTP-MB should speed up the process of payment of compensation and support to the remaining AHs at the Army Relocation Area and hand over the recovered land to the two military units by 4th Quarter 2014 as latest.

B. Compensation Payment and resettlement supports and Settlement of complains

50. The HHTP MB needs to regularly monitor and support Thach That DPC in the effectively and properly use of the allocated budget for compensation payment, resettlement support for AHs in the Military Relocation Area.

51. Additionally, Thach That DPC should make sure that the payments meet the provisions stated in the updated RP. Compensation rates should base on replacement cost without depreciation for assets, such as buildings, fences, kitchen, toilets, wells, etc.

52. The Thach That DCARB should coordinate effectively with the Binh Yen CPC and relevant agencies of the Thach That DPC to settle all AHs' complains following requirements of the Updated RP and the regulation of Viet Nam.

C. Independent Resettlement Review Contract

53. By 15 July 2014, the land of 10.9 hectares (agriculture and resident) at the Army Relocation Area have not yet been recovered. Expectedly, these land plots could be recovered by December 2014.

54. To ensure the independent resettlement review as required by the Project the PMU-USTH should consider the extension from 6-12 months of the independent resettlement review contract.

D. Income rehabilitation

55. Thach That DPC and CPCs of Tan Xa and Binh Yen should consider and implement adequate measures to ensure that vocational training courses and job introduction are implemented effectively and suitably with APs' ability. Potential measures could be considered are as below:

- i. Survey of labor market and evaluation on labor demands and recruitment of potential units;
- ii. On a monthly and quarterly basis, carrying out survey and monitoring of results created by assistance, vocational training and job introduction.
- iii. Cooperate with relevant agencies as the women unions of Ha Noi CPC, and women unions of neighbor districts in order to identify measures to support the Project AHs, especially female AHs whose age are over 35 year old.

56. Additionally, Thach That DPC and CPCs of Tan Xa and Binh Yen should consider organizing meeting, workshop, etc. to guide the AHs knowledge and skills on money.

57. Thach That DBCAR and CPCs of Tan Xa and Binh Yen should actively coordinate with the HHTP-MB in preparing the livelihood rehabilitation plan under the HHTP and ensure that the plan will be prepared with the participation of APs and positively and effectively rehabilitation measures will be developed and implemented to meet the APs' requirements.

E. Preparation activities

58. PMU-USTH needs to accelerate preparation activities, including: geology survey, construction of land boundary fence, land mining, campus planning, etc. on the land which was handed over from the HHTP-MB.

F. Coordination with construction activities

59. Preparation activities for the USTH Project should be made ready for commencement of construction works once receiving cleared land from the HHTP-MB.

60. PMU-USTH should ensure that construction works will only be conducted on clean land and all AHs are fully paid with compensations and necessary supports.

Annex 1: List of persons met by IRR Specialist

1. PMU-USTH

- Mr. Nguyen Van Ngu - Director, PMU-USTH
- Mr. Nguyen Quoc Huy – Deputy Director, PMU-USTH
- Mr. Hoang Truong Nam – Internal Resettlement Monitoring and Evaluation Specialist
- Mr. Le Van Dua – Officer

2. HHTP-MB

- Mr. Nguyen Duy Thang – Deputy Head of Land Management Unit
- Mr. Chu SyHuan – Staff of Planning Division

3. Thach That DBCAR

- Mr. Can Van Lai – Head of the Thach That DCARB
- Mr. NguyenThanh Khoi – Deputy head of Thach That DCARB

4. Tan Xa Commune

- Mr. Le Van Bac – Chairman of Tan Xa CPC
- Mr. Le Hong Minh – Head of Commune 1 - Tan Xa CPC

5. Binh Yen Commune

- Mr. Le Van Mao – Chairman of Binh Yen CPC
- Mr. Nguyen Xuan Huong – Cadastral Officer
- Mr. Ngo Van Ngot – Head of Thai Binh Village
- Mr. Ngo Van Lanh – Deputy Head of Thai Binh Village
- Mr. Ngo Van Luoc – Head of Canh Chu Village
- Mr. Tran Tam – Deputy Head of Canh Chu Village

Annex 2: Questionnaire for Households Survey

I am an expert who is monitoring the implementation of the resettlement plan for the project "University of Science and Technology of Hanoi". We wish you to provide the most accurate information on the implementation of the resettlement plan in the past

The provided information will only be used to evaluate and improve the effectiveness of implementation of the resettlement plan. Your information will be kept confidential.

I. General information about affected households and properties

1. Full name of respondent:
2. Full name of household's head: sex: male ☐ / female ☐
3. Address (current housing)
 - No.:
 - Ward / commune:
 - District:
4. Accommodation address before receiving compensation (specify time)
 - No.:
 - Ward / commune:
 - District:
5. Your family is subject to family policy, vulnerable:
 - a. Poor ☐ 1
 - b. Households with disabled persons, invalids ☐ 2
 - c. Households with elderly martyrs solitary: ☐ 3
 - d. No ☐ 4
6. **Affected assets:**
 - a. Affected land: ☐ 1 (move to question 7)
 - b. Affected house/auxiliary work ☐ 2 (move to question 8)
 - c. Other affected assets ☐ 3 (move to question 9)
 - d. Affected trees and crops ☐ 4 (move to question 10)

II. Details of affected assets, compensation and entitlements

7. Affected land

7.1. Status of ownership prior to compensation

- Land ownership certificate: ☐ 1
- Land rent from legal owner: ☐ 2
- Land ownership and usage without legal paper: ☐ 3
- Other (specify) _____

7.2 Years of affected land ownership/ occupation/ usage:

- Less than 5 years ☐ 1
- 5 - 10 years ☐ 2
- More than 10 years ☐ 3

7.3 Type of affected land

- Residential land ☐ 1

- Land (rice) ☐ 2
- Land (crop) ☐ 3
- Forest land ☐ 4
- Garden land ☐ 5
- Other (specify):

7.4 Details on Affected Land

- Fully affected ☐
- Partially affected, equivalent to % of your total land
 - 0-10% (a)
 - 10-70% (b)
 - More than 70% (c)
- Do not know
- Other (specify):

7.5 Compensation Payment

- 1 fully payment ☐
- 2 installment payments ☐
- Do not know:
- Other (specify):

7.6 If compensation payment is not received. Do you know what reasons?

.....

.....

7.7 If land is acquired, what assistances did you receive?

- Bonus for early land hand over ☐ 1
- Support for job training, job changes ☐ 2
- Support on life stabilization ☐ 3
- Other (specify): .

7.8 Are you satisfied with unit price applied in resettlement, compensation: Yes / No

8. Auxiliary work/house, shop (see answer 6.b or move to question 10)

8.1 Status of ownership

- Have legal/legalizable paper: ☐ 1
- Do not have legal/legalizable paper ☐ 2
- Other (specify)

8.2 Affected house, auxiliary works has been used for:

- Just for living ☐ 1
- Living and doing business ☐ 2
- Business Only ☐ 3
- Other (specify)

8.3 Type of house/auxiliary work affected?

- Temporary ☐ 1
- Class 4 ☐ 2
- One store house ☐ 3

- Two store house ☐ 4
- Three or more than three store house ☐ 5

8.4 Details on affected house / auxiliary work

- Fully affected ☐ 1
- Partially affected ☐ 2, equivalent to % of total house
- Do not know ☐ 3
- Other (specify):.....

8.5 What compensation, support did you receive?

- Compensation for land and house based on replacement cost ☐ 1
- Compensation for house, but land ☐ 2
- Support for house renting during house construction ☐ 3
- Other (give details):

8.6 Phases of compensation payment

- One payment ☐ 1
- Two installment payment ☐ 2
- Don't know/ Don't remember/ Not being a money recipient ☐ 3
- Other (specify):

8.7 When did you receive payment?

- Before house demolishment ☐ 1
- During house demolishment ☐ 2
- After house demolishment ☐ 3
- Do not know ☐ 4
- Other (specify)

8.8 How long do you have to remove your house / works ?

- Less than 01 month ☐ 1
- 1-2 months ☐ 2
- Do not know ☐ 3
- Other (specify)

8.9 In case of relocation, are you satisfied with the new location ?

- Yes ☐ 1
- No ☐ 2
- Don't know ☐ 3
- Other (specify)

9. Other affected fixed assets

- Well: ☐ 1, did you receive compensation based on replacement cost? Yes/No
- Water pipe: ☐ 2, did you receive compensation based on replacement cost? Yes/No
- Electricity line ☐ 3, did you receive compensation based on replacement cost? Yes/No
- Worship hall ☐ 4, did you receive compensation based on replacement cost? Yes/No
- Tomb ☐ 5, did you receive compensation based on replacement cost? Yes/No
- Don't know

10. Affected trees and crops

- `Rice ☐ 1, did you receive compensation based on replacement cost? Yes/No
- Crop ☐ 2, did you receive compensation based on replacement cost? Yes/No
- Other tree ☐ 3, did you receive compensation based on replacement cost? Yes/No
- Don't know: VND

11. Other type of supports: Yes/No/Not applicable. If yes, select type belows

- Support for woman headed household ☐ 1
- Support for disable person ☐ 2
- Support for poor household ☐ 3
- Support for those household is fully affected ☐ 4
- No support ☐ 5
- Other, specify

III. Community's involvement and Grievance Redress

12. Did you participate in community's meeting prior to DMS

- Yes ☐ 1
- No ☐ 2
- Do not know ☐ 3
- Others

13. Did you sign the DMS minutes

- Yes ☐ 1
- No ☐ 2
- Don't know ☐ 3

14. Did you receive compensation, support plan?

- Yes ☐ 1
- No ☐ 2
- Don't know ☐ 3
- Other (specify):

15. Did you receive explanation on compensation, support (if required)?

- Yes ☐ 1
- No ☐ 2
- Don't know ☐ 3
- Other (specify):

16. Did you sign on compensation payment invoice?

- Yes ☐ 1
- No ☐ 2
- Don't know ☐ 3
- Other.....

17. Do you have any complaint or grievance of compensation?

- Yes ☐ 1
- No ☐ 2
- Don't know ☐ 3

- Other (specify)

If Yes:

a. What do you complain of:

.....

b. What organization/ agency did you send your letter of complaint to

- Name of the first organization/ agency
- Name of the second organization/ agency
- Name of the third organization/ agency
- Don't know ☐
- Other (specify)

c. How soon did you get response from the above organization/ agency

- Name of the first organization/ agency
- Name of the second organization/ agency
- Name of the third organization/ agency
- Don't know
- Other (specify)

d. Were you happy with their responses and solutions?

- Yes ☐ 1
- No ☐ 2
- Don't know ☐ 3
- Other (specify)

18. What is your family's current occupation?

Primary job (spend more time)

Secondary job (spend less time)

.....

19. How much is your household's monthly average income?

- VND/month
- Don't know ☐

20. What source of income do you have (before compensation)?

- Primary
- Secondary

21. What is your family's current occupation?

Primary job (spend more time)

Secondary job (spend less time)

.....

22. How much is your household's monthly average income?

- VND/month
- Don't know ☐

23. What source of income do you have (before compensation)?

- Primary
- Secondary

24. In your opinion, your family's income can be restored

- Yes ☐ 1
- No ☐ 2

- Do not know ☐ 3
- Other (specify)

25. In your opinion, what assistance needed to help you restore income source and livelihood in future

- Vocational training: ☐ 1. Specify job:
- Provision of credit ☐ 2.
- Other (specify).....

Hanoi, dd....mm...2014

Interviewer

Head of Village

Annex 3: List of Affected Households at 26 ha (Tan Xa) and 52.7 ha (Binh Yen)**1. List of affected household at Tan Xa Commune**

No.	Name of Household Head	Total affected land area (m2)	Area Paid (m2)	Type of affected land
1	Duong Tien Chuc	324.6	324.6	L
2	Nguyen Dinh Nghi	262.6	262.6	L
3	Nguyen Dinh Vi (Su)	304.4	304.4	L
4	Duong Tien Thanh	281.2	281.2	L
5	Duong Tien Thanh	563.1	563.1	L
6	Do Van Sac	517.2	517.2	L
7	Chu Van Tuan (Quyen)	612.1	612.1	L
8	Chu Van Tuan (Quyen)	95.9	95.9	HM
9	Chu Van Tuan (Quyen)	73.0	73.0	HM
10	Duong Tien Yeu (Thien)	426.9	426.9	L
11	Nguyen Tien Thuan	339.4	339.4	HM
12	Truong Ho Cung	684.5	684.5	L
13	Truong Ho Cung	275.1	275.1	L
14	Nguyen Van Luong (Sang)	189.3	189.3	L
15	Nguyen Van Luong (Sang)	717.8	717.8	L
16	Duong Tien Tinh	110.5	110.5	HM
17	Truong Cong Kim	330.8	330.8	L
18	Chu Van Mo (Kiem)	287.1	287.1	L
19	Chu Van Hanh (Thuc)	241.3	241.3	L
20	Duong Tien Ai	399.4	399.4	L
21	Duong Tien Ai	295.6	295.6	L
22	Trong Thi Hoi	221.8	221.8	L
23	Chu Huu Dieu	255.9	255.9	L
24	Chu Huu Dieu	154.8	154.8	L
25	Nguyen Van Do	219.5	219.5	L
26	Nguyen Van Ha (My)	292.2	292.2	L
27	Nguyen Van Ha (My)	1,084.7	1,084.7	HM
28	Nguyen Huy Can (Su)	291.7	291.7	L
29	Nguyen Tien Luan (Nga)	272.4	272.4	L
30	Duong Tien Chien	420.8	420.8	L
31	Truong Cong Quynh	216.7	216.7	L
32	Nguyen Huy Hinh	759.8	759.8	L
33	Nguyen Huy Hinh	390.7	390.7	L
34	Truong Thi Phuc	118.5	118.5	L
35	Truong Thi Phuc	559.4	559.4	L
36	Truong Thi Phuc	104.4	104.4	L
37	Truong Cong An	340.3	340.3	L
38	Truong Cong An	638.2	638.2	L
39	Truong Cong An	306.0	306.0	L
40	Nguyen Van Quang	123.5	123.5	HM
41	Nguyen Dinh Tu	162.8	162.8	L
42	Pham Viet Phu (Nhat)	362.7	362.7	L

43	Pham Viet Phu (Nhat)	373.4	373.4	HM
44	Chu Van Dau (Hue)	545.4	545.4	L
45	Truong Cong Danh	167.0	167.0	HM
46	Nguyen Tien Toan	255.5	255.5	L
47	Pham Thi Nu	331.5	331.5	L
48	Duong Tien Le	222.7	222.7	L
49	Nguyen Thi Oanh	361.0	361.0	L
50	Nguyen Thi Oanh	146.8	146.8	HM
51	Nguyen Thi Oanh	186.8	186.8	L
52	Nguyen Tien Tich	474.1	474.1	L
53	Nguyen Van Hong	396.2	396.2	HM
54	Nguyen Van Hong	772.7	772.7	L
55	Nguyen Van Luong (Lien)	298.5	298.5	L
56	Nguyen Van Luong (Lien)	181.2	181.2	L
57	Duong Tien Chuc	603.6	603.6	HM
58	Duong Tien Chuc	836.3	836.3	HM
59	Nguyen Van Loc (Phuong)	519.2	519.2	HM
60	Nguyen Van Trinh	661.1	661.1	L
61	Nguyen Van Luong (Hoa)	327.9	327.9	HM
62	Nguyen Van Luong (Hoa)	172.5	172.5	HM
63	Chu Van Tuan (Quyen)	350.3	350.3	HM
64	Nguyen Van Tron (Dung)	340.8	340.8	L
65	To Thanh Trung	212.7	212.7	HM
66	Nguyen Thi Hanh	161.5	161.5	HM
67	Nguyen Thi Hanh	252.5	252.5	HM
68	Nguyen Thi Hanh	509.1	509.1	HM
69	Nguyen Tien Luc (Duyen)	578.4	578.4	HM
70	Nguyen Tien Luc (Duyen)	97.9	97.9	HM
71	Nguyen Van Do	80.8	80.8	HM
72	Nguyen Van Do	124.1	124.1	HM
73	Nguyen Van Do	347.2	347.2	HM
74	Truong Cong Quynh	571.9	571.9	HM
75	Nguyen Van Dien (Non)	389.5	389.5	L
76	Nguyen Van Dien(Non)	87.0	87.0	L
77	Nguyen Van Dien (Non)	88.0	88.0	L
78	Nguyen Van Quang	233.3	233.3	L
79	Nguyen Van Quang	188.5	188.5	L
80	Nguyen Van Quang	51.8	51.8	L
81	Nguyen Van Quang	249.8	249.8	HM
82	Nguyen Van Quang	267.4	267.4	HM
83	Nguyen Van Quang	118.3	118.3	HM
84	Le Van Nam (Hien)	235.4	235.4	HM
85	Nguyen Thi Tuyet	408.3	408.3	L
86	Nguyen Tien Thu	270.8	270.8	HM
87	Nguyen Tien Thu	135.3	135.3	HM
88	Nguyen Tien Thu	419.2	419.2	HM
89	Nguyen Tien Thu	282.0	282.0	HM
90	Duong Tien Quyen	44.4	44.4	HM

91	Duong Tien Quyen	318.2	318.2	HM
92	Nguyen Huy Bo	442.3	442.3	L
93	Nguyen Van Ngan	223.7	223.7	L
94	Chu Van Tuan (Quyen)	547.3	547.3	L
95	Duong Tien Thai	520.0	520.0	L
96	Nguyen Tien Hoang	434.3	434.3	L
97	Duong Tien Do (Hoa)	637.8	637.8	L
98	Nguyen Huy Thiet (Tham)	304.2	304.2	HM
99	Nguyen Tien Hoang	346.7	346.7	L
100	Duong Tien Dung (Hoa)	328.9	328.9	L
101	Nguyen Huy Quang	281.2	281.2	L
102	Duong Tien Chi	188.4	188.4	L
103	Nguyen Huy Thinh	228.1	228.1	L
104	Nguyen Thi Tin	608.4	608.4	L
105	Nguyen Thi Van	4,439.7	4,439.7	HM
106	Nguyen Dinh Nghi	312.1	312.1	L
107	Chu Van Toan	193.2	193.2	L
108	DuongTien Chi	202.1	202.1	L
109	Bui Xuan Thich (Vuong)	667.3	667.3	L
110	Nguyen Hai Van	404.1	404.1	L
111	Chu Van Ha	142.7	142.7	L
112	Nguyen Dinh Tu	806.4	806.4	L
113	Nguyen Tien Toan	243.0	243.0	L
114	Truong Cong Quynh	347.1	347.1	L
115	Nguyen Van Tron (Dung)	367.7	367.7	L
116	Truong Ho Cung	2,620.5	2,620.5	HM
117	Bui Xuan Thich (Vuong)	462.5	462.5	L
118	Nguyen Thi Hoa	259.5	259.5	L
119	Duong Tien Dong	772.3	772.3	L
120	Nguyen Tien Toan	929.9	929.9	*
121	Phung Van Sy	287.4	287.4	L
122	Pham Thi Thu (Lang)	474.5	474.5	L
123	Bui Xuan Thich (Vuong)	161.3	161.3	L
124	Pham Thua Su	166.5	166.5	L
125	Dang Thi Ha	341.9	341.9	L
126	Nguyen Thi Hien	178.2	178.2	L
127	Dang Thi Ha	287.2	287.2	L
128	Nguyen Tien Dung (Nhai)	383.3	383.3	
129	Nguyen Van Thanh	15,398.8	15,398.8	R
130	Nguyen Tien Dung	1,944.0	1,944.0	*
131	Nguyen Tien Toan	898.0	898.0	L
132	Nguyen Tien Toan	181.6	181.6	L
133	Nguyen Tien Dung (Nhai)	1,563.3	1,563.3	*
134	Nguyen Tien Toan	774.8	774.8	V
135	Nguyen Tien Toan	508.3	508.3	HM
136	Chu Van Toan	9,039.5	9,039.5	R
137	Truong Cong An - Ng.V.Thanh (M)	6,173.5	6,173.5	R
138	Chu Van Sang	33,225.4	33,225.4	R

139	Nguyen Dinh Canh	885.3	885.3	L
140	Duong Tien Chuc	613.3	613.3	HM
141	Pham Thi Thu (Lang)	9,632.3	9,632.3	R
142	Le Duong Thuy Chi	8,473.1	8,473.1	R
143	Nguyen Van Hoan	15,595.3	15,595.3	R
144	Ng. D. Hanh (M) Ng. V. Trieu	11,186.0	11,186.0	V
145	Nguyen Van Trieu	360.0	360.0	V
146	Ng V Luong (Ng. Duc Hanh)	316.0	316.0	V
147	Ng. V Trieu (Ng. Duc Hanh)	1,106.0	1,106.0	V
148	Ng. V. Du (Ng. Duc Hanh)	1,200.0	1,200.0	V
149	Nguyen Van Quan	3,710.4	3,710.4	R
Total		173,203.0	173,203.0	

Source: IRR No. 7

2. List of affected household at Binh Yen Commune

TT	Name of Household head	Land Area (m2)
1	Do Van Dac - Do Minh Dac - Nguyen Thi Quy	470.9
2	Do Van Mun (Do Van Khoi)	275.7
3	Do Van Nam - Nguyen ThiDương	222.4
4	Do Van Toan - Nguyen Thi Hien	170.6
5	Bui Van Tu - Nguyen Thi My	194.4
6	Hoang Thi Hue (Kieu Thi Lan)	339.6
7	Nguyen Dinh Ngon- Hoang Thi Nhan	351.4
8	Nguyen Dinh Thao (Nguyen Dinh Viet)	312.4
9	Nguyen Ngoc Lan - Nguyen Van Lan - Nguyen Thi Ly	690.2
10	Nguyen Thi Thin – 1927	271.6
11	Nguyen Van Nghia - Ngo Thi Hue	488.6
12	Nguyen Van Su- Nguyen Thi Khuyen	236.6
13	Tran Van Khoi- Hoang Thi Dien	111.4
14	Tran Van Loi – Tran Duc Loi - Nguyen Thi Ly	255.3
15	Tran Van Sang - Tran Van Ty - Do Thi Nam	427.5
16	Do Van Xuat - Ngo Thi Hoa	260.0
17	Nguyen Thi Dan	240.0
18	Nguyen Thi Ngu (Do Van Tan)	238.7
19	Nguyen Van Chen - Nguyen Thi Thap	212.5
20	Tran Van Can- Nguyen Thi Dau	450.3
21	Nguyen Van Hue - Nguyen Thi Thieu	917.9
22	Do Van Kinh - Phung Thi Na	444.5
23	Do Van Hong - Nguyen Thi Nga	136.7
24	Do Van Hoan - Nguyen Thi Chiem	176.7
25	Vu Thi Chinh (Nguyen Van Huong)	512.8
26	Nguyen Van Khue - Nguyen Thi Chien	911.3
27	Hoang Thi Xuan (Tran Van Thang)	127.3
28	Nguyen Van Nghia - Nguyen Thi Na	516.8
29	Do Van Ty - Hoang Thi Von	613.0

30	Nguyen Van Bang - Khuat Thi Thuy	47.4
31	Hoang Van An - Tran Thi nga	619.4
32	Do Van Huynh - Nguyen Thi Sam	177.8
33	Nguyen Thi Tich (Nguyen Thi Huyen)	846.5
34	Hoang Thi Tho (Lai Van Hiep)	840.3
35	Nguyen Dinh Dinh - 1954	787.8
36	Nguyen Thi Giang - 1960	433.2
37	Cao Van He - Nguyen Thi Loi	754.0
38	Nguyen Thi Lan - 1959	543.0
39	Do Van Luc - Kieu Thi Hien	824.3
40	Hoang Van Thom - Do Thi Mai	763.9
41	Nguyen Thi Mam - 1951	149.1
42	Nguyen Dinh Sang - Do Thi Hang	374.0
43	Hoang Thi Hue - 1961	833.9
44	Nguyen Dinh That - Hoang Thi Huong	872.4
45	Dinh Cong Ty (1959)	633.2
46	Ngo Duc Vu (1957)	1,007.7
47	Quach Thi Da (1963)	1,734.9
48	Ngo Van Tinh (1920)	2,043.7
49	Dao Xuan Chi (1956)	2,131.2
50	Ngo Van Lanh (1958)	1,375.5
51	Quach Dinh Lu (1942)	1,652.8
52	Ngo Van Ngach (1930)	1,009.7
53	Tran Duc Dao (1939)	329.9
54	Tang Huu Ha - Nguyen Thi Chuc	1,422.4
55	Quach Thi Lanh (1960)	817.2
56	Ngo Van Le (1961)	1,434.7
57	Tran Duc Yen (1955)	425.7
58	Dao Xuan Anh (1981) (Dao Xuan Man)	222.8
59	Quach Dinh Ket (1967)	427.1
60	Khuat Duy Thang - Dao Thi Na	1,107.3
61	Tang Huu Moc (1955)	1,257.8
62	Tang Thi Tho (1950)	493.9
63	Nguyen Thi Ca (1955) (Ng Van Tung)	461.0
64	Dao Xuan Sam (1920)	865.4
65	Quach Dinh Cam (1960)	1,558.1
66	Ngo Gia Lap (1960)	2,013.7
67	Ngo Gia Lap (1960)	308.3
68	Khuat Duy Toan (1973)	896.5
69	Ngo Duc Vien (1960)	2,207.6
70	Tang Huu Giang - Vuong ThiDuc	249.4
71	Nguyen Thi Thang (1937) (certificarte Tang Huu Ninh)	964.7
72	Tang Thi Ky (1968)	397.7
73	Dao Xuan Chi (1956)	413.0
74	Tang Huu Tuan (1972)	258.1
75	Tran Duc Hung (1960) (certificate Tran Dinh Hung)	1,514.5

76	Quach Dinh Hong (1965)	1,540.0
77	Ngo Thi Tuyet -1971	2,250.0
78	Khuat Duy Cat (1955)	2,584.1
79	Quach Thi Huong (1958)	864.5
80	Quach Thi Tach (1950)	457.5
81	Ngo Ngoc Thanh (1968) (certificate Ngo Van Thanh)	347.5
82	Nguyen Van An - Dao Thi Thanh	144.3
83	Ngo Van Chuc (1945)	1,496.4
84	Ngo Van That - Nguyen Thi Sang	444.8
85	Nguyen Thi Nhan (1965) Ngo Van Phu	2,136.5
86	Quach Dinh Nen - Ngo Thi Bot	2,434.2
87	Ngo Van Thong (1964)	2,329.8
88	Tang Huu Son (1952)	1,348.1
89	Ngo Gia Nang (1944) (Ngo Van Nang)	2,524.9
90	Tang Huu Thu (1959)	104.7
91	Ngo Van Lai - Hoang Thi Nu	567.0
92	Ngo Duc Bang - Nguyen Thi Hoan	668.4
93	Le Thi Ly (1965) Chong Ngo Van Nghi	1,519.5
94	Tran Duc Gia (1962)	1,756.3
95	Nguyen Van Sinh (1960)	1,398.7
96	Ngo Van Gia - Vuong Thi Nien	487.6
97	Ngo Van Ngai (1930)	1,687.5
98	Ngo Van Thon (1955)	1,277.2
99	Khuat Duy Cat (1955)	257.2
100	Ngo Duc Bang - Nguyen Thi Hoan	111.2
101	Ngo Thi Hong(1931)	353.0
102	Ngo Thi Tuyet -1971	42.1
103	Ngo Van That - Nguyen Thi Sang	501.1
104	Ngo Gia Nang (1944) (Ngo Van Nang)	303.9
105	Dao Xuan Ne - Ta Thi Nghi	77.1
106	Tang Thi Dong (1961)	733.7
107	Binh Yen CPC	19,589.8
108	Tang Huu Son (1952)	266.1
109	Ngo Van Tuyen (1965)	144.4
110	Ngo Duc Bang	296.9
111	Binh Yen CPC	6,361.4
112	Quach Dinh Nen - Ngo Thi Bot	82.6
113	Nguyen Thi Von (1955)	1,261.7
114	Ngo Van Sau - Nguyen THi Thinh	499.4
115	Tran Duc Chat (1972)	226.1
116	Ngo Van Thu - Nguyen Thi Ne	580.2
117	Ngo Van Tang (1975)	646.2
118	Nguyen Xuan Deo (1950)	766.5
119	Ngo Duc Lan - Nguyen Thi Siu	1,863.1
120	Tran Duc Ty - Nguyen Thi Thu	540.0
121	Ngo Van Xuat (1960)	1,015.4

122	Nguyen Tien Quang (1966) (Nguyen Van Cuong)	85.7
123	Ngo Thi Dai (1938) (Quach Dinh Thao)	1,310.6
124	Tran Duc Lien (1957)	2,942.0
125	Vuong Thi Vach (1965) (Vuong Thi Bach)	248.1
126	Ngo Van To (1940)	613.1
127	Ngo Thi Nam (1942) (Ngo Van Dinh)	1,533.7
128	Binh Yen CPC	5,900.4
129	Dao Xuan Khang - Nguyen Thi Sau	74.2
130	Ngo Van Tuc (Ngo Duc Tuc)	281.5
131	Dao Xuan Suu - Nguyen Thi Lan	423.7
132	Nguyen Xuan Bui - Nguyen Thi That	534.5
133	Tran Duc Sau - Khuat Thi Hoa	238.2
134	Nguyen Thi Lan (1957)	749.3
135	Quach Dinh Thuan (1960) (Quach Dinh Hao)	2,472.8
136	Binh Yen CPC	4,927.40
137	Dao Xuan Ngoc - Vuong Thi Toan	225.5
138	Tran Duc Vay	965.7
139	Khuat Duy Cat - Kieu Thi Thai	320.9
140	Ngo Van Tinh - Vuong Thi Tinh	288.3
141	Dinh Cong Thoa - Phung Thi Mai	1,126.2
142	Quach Dinh Hong - Ngo Thi Dung	150.7
143	Khuat Duy Toan - Do Thi Huong	206.1
144	Dao Xuan Luat (1969)	360.5
145	Ngo Van Quy - Do Thi Chinh	463.7
146	Ngo Thi Doan (1944)	369.9
147	Nguyen Thi Hoa (1952) (Nguyen Thi Hue)	197.7
148	Ngo Thi Man (1939)	348.6
149	Tran Duc Canh - Nguyen Thi Mien	1,166.4
150	Ngo Thi Chu (1940)	157.3
151	Nguyen Van Sinh - Ngo Thi Dat	1,971.4
152	Nguyen Van Kien (1971)	406.5
153	Nguyen Thi Cau - Tran Van Dy	1,823.5
154	Ngo Van Vui - Hoang Thi Thuy	4,693.6
155	Nguyen Van An - Dao Thi Thanh	2,152.4
156	Ngo Van Le - Ta Thi De	922.8
157	Tran Duc Da - Nguyen Thi Lien	1,419.9
158	Dao Xuan Chi - Dinh Thi Tan	177.1
159	Nguyen Ngoc Hai - Bui Thi Chanh	223.9
160	Hoang Thi Dao (1958)	365.2
161	Nguyen Thi Buc (1938) (Do Van Le)	607.6
162	Do Van Bang - Hoang Thi Dam	561.6
163	Hoang Thi Xuan (1961)	300.0
164	Nguyen Thi Ban (1957)	757.4
165	Nguyen Tat Thang - Nguyen Thi Thoi	1,051.6
166	Hoang Cong Phong (tree on public land)	
167	Do Van Han (1953)	429.1

168	Nguyen Van Lau (1951)	441.3
169	Nguyen Thi Nhan (1963)	389.9
170	Do Van Thanh (1964)	595.5
171	Hoang Van Thu - Dao Thi Sen	239.3
172	Hoang Van Ta - Ngo Thi Lieu	360.0
173	Dao Thi Du (1930)	37.9
174	Nguyen Van Phong - Do Thi Sen	216.0
175	Nguyen Thi Lien (1963)	748.1
176	Nguyen Dinh Sang - Do Thi Tao	1,598.0
177	Cao Thi Ha (1960) Do Van Hai	665.0
178	Nguyen Dinh Hung	1,286.7
179	Do Van Hoi	479.2
180	Nguyen Dinh Xoan (1960)	518.0
181	Nguyen Dinh Bay (1972)	513.8
182	Nguyen Thi Ha (1945)	342.0
183	Phan Van Toan (1990) Phan Thi Teo	422.5
184	Nguyen Van Lang	2,059.3
185	Kieu Thi Lien (1944)	364.9
186	Hoang Quoc Tri (1933)	202.1
187	Nguyen Dinh Thao (1957)	855.5
188	Do Van Mui (1963)	557.7
189	Hoang Van Tai (1934)	306.6
190	Tran Van Toan - Le Thi Thanh	464.1
191	Nguyen Thi Chanh (1964)	96.5
192	Nguyen Van An (1932)	824.0
193	Nguyen Dinh Tam - Ngo Thi Lam	744.5
194	Nguyen Dinh Ngon (1914)	532.5
195	Bui Thi Tong (1942)	305.3
196	Nguyen Thi Lan (1956)	246.4
197	Do Thi Hue (1930)	582.8
198	Nguyen Dinh Thuc (1979) Nguyen Thi Lua	536.0
199	Nguyen Thi Lien (1963) Hoang Van Duoc	536.8
200	Nguyen Thi Luyen (1963)	400.0
201	Hoang Van Thom (1933)	246.6
202	Do Van Lap - Nguyen Thi May	440.3
203	Hoang Van Long - Nguyen Thi Hang	464.0
204	Nguyen Van Nghia - Ngo Thi Hue	381.9
205	Nguyen Thi Khoat (1936)	483.6
206	Nguyen Thi Loan (1966) (Hoang Van Phu	373.3
207	Hoang Van That (1971)	396.6
208	Nguyen Thi Huong (1977) Hoang Thi Mui	765.5
209	Nguyen Van Su (1959)	617.4
210	Nguyen Thi Lien (1933)	1,165.4
211	Nguyen Thi Thuoi (1962) Tran Van Tien	247.5
212	Tran Thi Dung (1932)	1,041.7
213	Hoang Thi Dao (1958)	501.9

214	Le Thi Ly (1965)	270.6
215	Ngo Thi Nhi (1964)	440.9
216	Quach Dinh Cam	308.0
217	Quach Dinh Cam - Vuong Thi The	256.2
218	Quach Thi Tach (1950)	200.0
219	Ngo Duc Lan - Nguyen Thi Siu	940.6
220	Cao Thanh Xuan (1951)	293.0
221	Nguyen Thi Thang (1937) (Tang Huu Ninh)	1,653.3
222	Quach Thi Da - Pham Van Tien	155.6
223	Ngo Thi Chu (1940)	296.6
224	Dao Xuan hung - Nguyen Thi Tham	260.9
225	TranDuc Sau - Nguyen Thi Hong	1,162.7
226	TranDuc Ty - Nguyen Thi Thu	276.7
227	Ngo Van Gia - Vuong Thi Nien	846.1
228	Ngo Van That - Nguyen Thi Sang	1,059.7
229	Ngo Van Vui - Hoang Thi Thuy	98.8
230	Ngo Duc Vien - Nguyen Thi Hong	177.6
231	Tang Huu Ha - Nguyen Thi Chuc	871.4
232	Ngo Duc La - Hoang Thi Mua	193.1
233	Dao Xuan Quy - Tran Thi Nhi	279.0
234	Khuat Duy Cat - Kieu Thi Thai	304.3
235	Ngo Gia Lap (1953)	480.1
236	Ngo Nhat Luong - Dao Thi Hong	360.6
237	Ngo Thi Dai (1937)	226.4
238	Ngo Van Thon - Nguyen Thi Xuan	340.5
239	Ngo Van Thong - Kieu Thi Dap	74.0
240	Tang Huu Son - Khuat Thi Phong	226.2
241	Nguyen Xuan Deo (1953)	328.3
242	Quach Dinh Lu - Phung Thi Tong	1,892.8
243	Ngo Van Ngach - Nguyen Thi Thanh	510.2
244	Nguyen Thi Ca (Nguyen Van Tung)	271.6
245	Ngo Gia Nang - Trinh thi Coi	560.6
246	Tang Huu Mao (trees on public land)	-
247	Khuat Duy Toan - Do Thi Huong	512.0
248	Tran Duc Chat - Ha Thi Van	310.7
249	Quach Dinh Thuan - Phi Thi Lan	239.0
250	Tran Duc Hung - Ngo Thi Hoa	918.1
251	Quach Dinh Thuan - Phi Thi Lan	227.6
252	Ngo Van Gia - Vuong Thi Nien	347.6
253	Vuong Thi Tinh (Ngo Van Tinh)	246.2
254	Ngo Thi Tuyet (1971)	493.4
255	Quach Thi Huong (1958)	540.5
256	Ngo Ngoc Thanh - Ngo Thi Thom	100.1
257	Ngo Van Xuat (1960)	94.6
258	Dao Xuan Trong - Nguyen Thi Hoan	709.2
259	Nguyen Thi Phu (1956)	738.5

260	Do Van Luong (1967)	46.3
261	Do Van Nghi - Nguyen Thi Lien	304.0
262	Nguyen Thi Thai (1949)	357.9
263	Nguyen Dinh Cuu (1942)	1,524.3
264	Nguyen Thi Thai (1949)	273.5
265	Nguyen Thi Vy (1934)	753.3
266	Dao Xuan Tuan - Do Thi Vien	253.3
267	Ngo Van Thu - Nguyen Thi Ne	898.9
268	Nguyen Thi Lang - Nguyen Van Thu	298.0
269	Ngo Van Gioi - Dao Thi Lien	497.1
270	Nguyen Van Sinh - Ngo Thi Dat	309.8
271	Nguyen Tien Quang - Ngo Thi Huyen	441.6
272	TranDuc Tiep - Ngo Thi Dinh	1,737.7
273	Tran Van Can (1944)	1,341.7
274	Hoang Thi Dau	194.3
275	Nguyen Van Thu (1963)	276.0
276	Phan Minh Thuan - Do Thi Lua	63.4
277	Hoang Van Thang - Nguyen Thi San	489.2
278	Binh Yen CPC	5,765.9
279	Ngo Van Son - Trinh Thi Xa	286.3
280	Ngo Van To - Nguyen Thi Goi	152.5
281	Dao Xuan Thang - Ngo Thi Ngoan	599.1
282	Ngo Gia Lap - Nguyen Thi Mao	2,410.1
283	Do Van Chung - Dao Thi Gia	294.8
284	Nguyen Van Dan - Nguyen Thi Ben	490.1
285	Nguyen Thi Tien (1945)	646.6
286	Bui Thi Khiem (1957)	1,103.6
287	Can Thi Lien (Nguyen Van Vui)	1,291.0
288	Dao Xuan Chi - Dinh Thi Tan	1,456.2
289	Ngo Van Chuc - Ngo Thi Ty	2,299.6
290	Dao Xuan Luat (1936)	1,689.3
291	Phi Thi Th (1953)	445.9
292	TranDuc Dung - Nguyen Thi Hong	967.9
293	Tang Huu Moc - Nguyen Thi Chin	30.0
294	Nguyen Van An - Dao Thi Thanh	1,030.5
295	Tran Duc Vay - Ngo Thi Tan	161.1
296	Tran Duc Vay - Ngo Thi Tan	278.6
297	Ngo Van Ngai (1930)	347.1
298	Quach Thi Huong (1958)	53.7
299	Do Thi Heo (1922)	347.0
300	Nguyen Xuan Bui - Nguyen Thi That	177.0
301	Dao Xuan Thanh - Phung Thi Vuong	200.1
302	Tran Duc Dao - Ngo Thi Quyt	3,633.3
303	Dao Xuan Khang - Nguyen Thi Sau	1,112.8
304	Dao Xuan Khang (Dao Thi Huong Thao)	294.4
305	Dao Xuan Khang - Nguyen Thi Sau	149.6

306	Nguyen Thi Thai	892.4
307	Nguyen Thi Hay (Do Van Tuat)	662.4
308	Do Van Hong - Nguyen Thi Can	792.3
309	Do Thi Nghi (Nguyen Van Dung)	1,333.5
310	Nguyen Van Vinh - Nguyen Thi Bot	617.9
311	Vu Thi Diep - Do Van Hien	501.2
312	Nguyen Van Tinh - Do Thi Sinh	877.3
313	Nguyen Van Vinh - Nguyen Thi Bot	275.2
314	Do Thi Nghi (Nguyen Van Dung)	120.0
315	Dao Xuan Suu - Nguyen Thi Lan	294.4
316	Quach Dinh Hung (1963)	949.1
317	Nguyen Dinh Sam - Nguyen Thi Dinh	1,044.7
318	Hoang Van Le - Do Thi Minh	748.6
319	Do Thi Kiem (1950)	411.0
320	Nguyen Thi Dinh (1940)	410.3
321	Nguyen Duc Mau (1948)	1,253.7
322	Nguyen Van Tinh - Do Thi Huy	211.0
323	Quach Dinh Nghia - Ta Thi Mai	191.9
324	Nguyen Thi Duoc (1955)	13.0
325	Nguyen Thi Nhan (1965)	393.3
326	Nguyen Xuan Bui - Nguyen Thi That	648.0
327	Dao Xuan Khang - Nguyen Thi Sau	150.4
328	Khuat Duy Chi (1942)	294.4
329	Ngo Thi Dac - Dao Xuan Na	772.9
330	Tran Van Quyen (1948)	1,237.1
331	Hoang Thi Hue (Nguyen Van Thiet)	120.0
332	Vuong Thi Thao (1960)	383.6
333	Nguyen Van Chuong - Tran Thi Bac	119.6
334	Tang Thi Dong (1961)	360.0
335	Nguyen Thi Nhan (1965)	315.5
336	Tran Duc Vay - Ngo Thi Tan	199.7
337	Tang Thi Dong (1961)	306.0
338	Nguyen Van Sinh - Ngo Thi Dat	758.7
339	Hoang Van Tai	4,100.2
340	Quach Dinh Cam - Vuong Thi The	567.8
341	Nguyen Thi Kim Yen - Nguyen Xuan Son	927.3
342	Nguyen Thi Thau (1962)	595.1
343	Tran Duc Canh - Nguyen Thi Mien	778.6
344	Le Trong Son - Dang Bich Van	634.5
345	Tran Viet Hung - Hoang Anh	1,383.6
346	Ngo Van Sau - Nguyen Thi Thinh	1,788.9
347	Nguyen Thi Ngoc Hue - Kieu Van Lan	1,887.3
348	Tran Duc Ngot - Nguyen Thi Luyen	240.8
349	Le Thi Vinh - Nguyen Van Tien	318.3
350	Do Thi The - Loc Minh Tien	729.5
351	Nguyen Van Vinh - Nguyen Thi Bot	223.9

352	Nguyen Thi Cuc (1959)	1,186.6
353	Nguyen Thi Khuyen (Tran Van Su)	343.6
354	Nguyen Thi Khuyen (Tran Van Su)	1,017.6
355	Hoang Cong Phong - Tran Thi San	937.4
356	Do Van Cung - Vuong Thi Vinh	308.9
357	Nguyen Thi Loan (Hoang Van Phu)	480.0
358	Nguyen Thi Dan (1934)	640.4
359	Quach Dinh Hong - Ngo Thi Dung	478.9
360	Tran Duc Yen - Nguyen Thi Loan	1,898.4
361	Nguyen Thi Chin (1957)	395.4
362	Nguyen Van Khich - Chu Thi Ha	555.1
363	Nguyen Thi Dua - Phan Ngoc Tho	364.3
364	Khuat Duy Cat - Kieu Thi Thai	1,971.1
365	Ngo Thi Lai - Nguyen Quoc An	431.3
366	Dao Xuan Khang (Dao Thi Huong Thao)	150.4
367	Nguyen Van Cu - Ngo Thi Nghia	715.2
368	Tran Duc Canh - Nguyen Thi Mien	130.0
369	Quach Dinh Cam - Vuong Thi The	144.0
370	Quach Dinh Hong - Ngo Thi Dung	160.0
371	Ngo Gia Nang - Trinh Thi Coi	214.0
372	Quach Dinh Nen - Ngo Thi Bot	161.3
373	Dao Xuan Ngoc - Vuong Thi Toan	570.0
374	Quach Dinh Lu - Phung Thi Tuong	25.0
375	Ngo Van Gia - Vuong Thi Nien	160.0
376	Vuong Thi Tinh (1935)	85.0
377	Le Thi The Hien	287.0
378	Vu Duc Thang - Nguyen Minh Ha	635.1
379	Vu Duc Tuan - Nguyen Thi Tu	537.8
380	Kieu Van Trang - Nguyen Thi Cuc	2,026.6
381	Bui Van Son - Hoang Thi Huong	451.6
382	Nguyen Van Tuat - Tran Thi Thu	287.0
383	Loc Thi Huong (1974)	468.3
384	Vu Ngoc Trung	1,062.1
385	Loc Manh Ha (1981)	535.7
386	Vu Manh Hung - Le Thi Lan Huong	944.2
387	Bui Van Son - Tran Thi Thuy Nga	622.1
388	Le Van Luan - Do Thi Thanh	579.7
389	Dang Thi Nhung (1971)	1,738.6
390	Tran Duc Hung - Nguyen Thi Tan	180.0
391	Nguyen Quang Duong - Nguyen Ngoc Dung	315.0
392	Ngo Thi Doan (1945)	194.1
393	Nguyen Tien Quang - Ngo Thi Huyen	728.9
394	Nguyen Trong Khanh - Nguyen Thi Bich Ha	2,012.6
395	Tran Duc Yen - Nguyen Thi Loan	636.0
396	Nguyen Thi Von (Vu Trong Quyet)	486.8
397	Quach Dinh Hong - Ngo Thi Dung	993.1

398	Tran Duc Lien - Le Thi Toan	424.0
399	Ngo Duc Lan - Nguyen Thi Siu	490.0
400	Tang Thi Tho (1950)	424.0
401	Ngo Van Thon - Nguyen THi Xuan	552.8
402	Quach Dinh Cam - Vuong Thi The	424.0
403	Ngo Duc Tuc - Hoang Thi Que	636.0
404	Ngo Thi Chu (1940)	212.0
405	Ngo Thi Nam - Ngo Van Dinh	1,204.2
406	Quach Thi Huong (1958)	1,477.1
407	Tran Duc Ty - Nguyen THi Thu	469.2
408	Nguyen Thi Lan (1957)	449.3
409	Tang Huu Moc - Nguyen Thi Chin	424.0
410	Nguyen Xuan Bui - Nguyen Thi That	424.0
411	Vuong Thi Tinh (Ngo Van Tinh)	624.0
412	Le Thi Ly (Ngo Van Nghi)	848.0
413	Tran Duc Canh - Nguyen Thi Mien	430.8
414	Ngo Gia Lap - Nguyen Thi Mao	900.7
415	Ngo Thi Hoa - Le Xuan Hung	424.0
416	Tran Duc Vay - Ngo Thi Tan	159.0
417	Ngo Van Chuc - Ngo Thi Ty	848.0
418	Khuat Duy Cat - Kieu Thi Thai	424.0
419	Quach Thi Lanh (1960)	224.0
420	Dao Xuan Sam - Nguyen Thi Vệt	1,143.2
421	Tang Huu Thu - Tran Thi Mai	98.5
422	Nguyen Van Nhung - Bui Thi Nghia	288.1
423	Ngo Duc Vien - Nguyen Thi Hong	534.0
424	Ngo Van Thong - Kieu Thi Dap	859.1
425	Ngo Van To - Nguyen Thi Goi	890.9
426	Nguyen Thi Ca (Nguyen Van Tung)	897.2
427	Khuat Duy Toan - Do Thi Huong	494.1
428	Khuat Duy Toan - Do Thi Huong	424.0
429	Quach Dinh Lu - Phung Thi Tuong	1,272.0
430	Quach Thi Lanh – 1960	314.6
431	VuDuc Thanh - Phung Thanh Van	944.2
432		
433	Nguyen Thi Bang – 1951	1,762.1
434	Nguyen Dinh Lang - Khuong Thi Nghe	646.8
435	Do Thi Thiec - Nguyen Van Nhuan	589.4
436	Tran Duc Dung - Nguyen Thi Huong	700.0
437	Trinh Thi Ngoc - Van Tien Hung	1,194.0
438	Nguyen Thi Thu Loan - Bui Tien Hung (Le Thi Thu Nguyet)	665.5
439	Tran Duc Vay - Ngo Thi Tan	1,189.4
440	Ngo Thi Tuyet – 1971	1,293.4
441	Ngo Van Ngach - Nguyen Thi Thanh	424.0
442	Tang Huu Son - Khuat Thi Phong	979.8
443	Tang Huu Ha - Nguyen Thi Chuc	1,025.7

444	Tran Duc Canh - Nguyen Thi Mien	159.0
445	Ngo Thi Lai - Nguyen Quoc An	150.4
446	Ngo Van Lanh - Ngo Thi Dung	952.7
447	Dinh Cong Ty - Le Thi Cuc	424.0
448	Do Van Cu - Do Thi Tam	411.2
449	Quach Dinh Nen - Ngo Thi Bot	516.0
450	Quach Dinh Nen - Ngo Thi Bot	834.0
451	Dao Xuan Chi - Dinh Thi Tan	1,321.5
452	Duong Thi Tam (Nguyen The Anh)	530.2
453	Tran Thi Hong	293.3
454	Nguyen Dinh Ninh	672.0
455	Nguyen Duc Thuan - Do Thi Tinh	407.4
456	Ngo Van Ngot - Tran Thi Sen	441.6
457	Ngo Gia Nang - Trinh Thi Coi	585.4
458	Le Thi Cham – 1936	456.0
459	Vuong Thi Tu	414.4
460	Ngo Van Lanh - Ngo Thi Dung	1,894.4
461	Ngo Van Le - Ta Thi De	513.0
462	Ngo Van To - Nguyen Thi Goi	765.7
463	Ngo Thi Dac - Dao Xuan Na	344.0
464	Nguyen Thi Bich Thuy	3,495.2
465	Kieu Viet Toan - Nguyen Thi Binh	2,112.6
466	Nguyen Ngoc Phuong	588.3
467	Nguyen Xuan Deo – 1953	1,070.4
468	Khuat Duy Cat - Kieu Thi Thai	455.5
469	Ngo Thi Nam - 1942	1,274.9
470	Tran Duc Lien - Le Thi Toan	188.0
471	Ngo Thi Hoa - Le Xuan Hung	294.4
472	Nguyen Van Hao - Le Thi Sen	668.4
473	Quach Thi Da - Pham Van Tien	112.2
474	Ngo Thi Lai - Nguyen Quoc An	147.2
475	Nguyen Thi Nhi - 1940	147.2
476	Vuong Thi Tinh (Ngo Van Tinh)	749.3
477	Tang Huu Ha - Nguyen Thi Chuc	322.7
478	Quach Dinh Lu - Phung Thi Tuong	337.2
479	Vuong Thi Tinh (Ngo Van Tinh)	495.0
480	Dao Thi Na - Khuat Duy Thang	647.0
481	Ngo Thi Hong - 1931	943.2
482	Dao Xuan Sam - Nguyen Thi Vet	2,714.4
483	Ngo Thi Chu (1940)	386.2
484	Nguyen Thi Tich (1932)	558.0
485	Hoang Thi Ha (1963)	400.0
486	Nguyen Van Ninh - Nguyen Thi Luong	3,026.5
487	Nguyen Dinh Ke - Nguyen Thi Chuyen	1,454.4
488	Nguyen Dinh Thu - Do Thi Hau	1,696.7
489	Le Van Cong - Nguyen Thi Nguyet	534.6

490	Nguyen Van Nguyen - Hoang Thi Xim	573.3
491	Ngo Van Quy - Do Thi Chinh	190.4
492	Nguyen Dinh Nghi (1947)	694.6
493	Nguyen Dinh Cuu (1942)	1,018.3
494	Quach Thi Tach – 1950	424.0
495	Nguyen Dinh Noi (1947)	747.5
496	Tran Thi Lan (1952)	118.4
497	Nguyen Van An (Ngo Thi Ty)	308.0
498	Tran Duc Canh - Nguyen Thi Mien	163.9
499	Tang Huu Thu - Tran Thi Mai	658.3
500	Nguyen Thi Dao - Nguyen Huu Trung	540.0
501	Dao Quoc Suu - Ha Tuyet Mai	647.9
502	Ngo Van Luc - Nguyen Thi Sang	294.7
503	Ngo Van Lanh - Ngo Thi Dung	326.5
504	Tran Duc Gia - Dao Thi Hien	1,841.4
505	Tran Duc Che - Nguyen Thi Co	280.0
506	Ngo Van Dong - Ta Thi Thu	369.0
507	Ngo Duc Bang - Nguyen Thi Hoan	217.0
508	Tran Duc That - Do Thi Nga	498.4
509	Ngo Van Le - Ta Thi De	288.2
510	Ngo Thi Tuyet	174.1
511	Nguyen Tien Dung - Nguyen Thi Kim Loan	1,613.4
512	Tran Duc Hung - Do Thi Sang	3,155.7
513	Quach Dinh Lu - Phung Thi Tong	45.5
514	Tran Duc Che - Nguyen Thi Co	424.0
515	Ngo Thi Doan (1945)	526.0
516	Dinh Quynh Giang - 1986	190.1
517	Do Van Xuat - Ngo Thi Hoa	442.3
518	Tran Van Dan - Nguyen Thi Theu	1,782.3
519	Tran Duc Tiep - Ngo Thi Dinh	813.7
520	Nguyen Thi Nga (1966)	57.7
521	Ngo Thi Dai (Quach Dinh Thao)	584.8
522	Tran Duc Hung - Do Thi Sang	228.8
523	Nguyen Thi Xuan Thuy (1969)	154.2
524	Nguyen Thi Lam (Nguyen Van Hon)	1,254.0
525	Nguyen Van Quyet - Do Thi Duyen	578.3
526	Do Van Mui (ba Nguyen Thi Ty)	403.9
527	Nguyen Thi Dan (1934)	815.7
528	Nguyen Hung Son - Khuat Thi Thao	837.4
529	Nguyen Van An - Dao Thi Thanh	765.8
530	Nguyen Van Chi - 1926	384.0
531	Tran Duc Che - Nguyen Thi Co	2,913.4
532	Nguyen Kim Toi - Truong Thi Tuyet	1,419.9
533	Tran Thi Thanh (transferred from Do Van Cung)	351.4
534	Ng Van Thao – Ng Thi Hong Van (granted by Nguyen Van Tinh)	430.0
535	Nguyen Khac Phuong - Pham Thi Chut (Nguyen Khac Binh)	726.6

536	Tran Duc Dong - Tran Thi Le	371.8
537	Nguyen Thi Lan – 1957	526.4
538	Do Canh - Nguyen Thi Thuy (transferred by Nguyen Thi Lien)	395.8
539	Truong Thi Thanh Binh (transferred from Do Van Thanh)	352.1
540	Nguyen Van Thang - Nguyen Thi Than	863.7
541	Do Thi Bich Van (1960) (transferred by Ngo Thi Hong)	633.0
542	Nguyen Nguyet Nha - Pham Tan (transferred by TranDuc Lien)	567.8
543	Nguyen Thi Chin - Tang Huu Moc (transferred by Ng Xuan Deo)	2,650.2
544	Nguyen Thi Chin (1960) (transferred by Nguyen Xuan Deo)	1,231.4
545	Do Duc Hau – 1969 (transferred by Khuat Duy Chi)	583.1
546	Tran Anh Tuan - Nguyen Le Thu Ha (transferred by Ngo Thi Man)	831.8
547	Ngo Van Le - Ta ThiDe	96.0
548	Tang Huu Thu - Tran Thi Mai	424.0
549	Tang Huu Mao - Ngo Thi Men (Transferred from Ngo Van Son)	31.0
550	Tran Van Dan - Nguyen Thi Theu (Granted byTran Duc Bu)	61.6
551	Ng Van Duc - Ng Thi Thuyet (granted by Nguyen Van Hue)	396.0
552	Ng Thi Thanh - Nguyen Van Toan (transferred by Tran Van Su)	355.4
553	Nguyen Van D-- Ng. Thi Doan (transferred by Nguyen Thi Lien)	703.2
554	Ng Van Toan - Ng Thi Thanh (transferred by Nguyen Dinh Tien)	753.4
555	Hoang Van Phong - Nguyen Thi Tui (granted by Nguyen Dinh Chin)	102.6
556	Nguyen Dinh Thanh - 1988 (transferred by Nguyen Van Hue)	451.2
557	Nguyen Thi Hong - 1958 (cho tặng tuong Nguyen Van Hue)	361.0
558	Tran Tuan Anh - Ng Hoang Thai (transferred by Hoang Thi Hue)	727.9
559	Nguyen Thi Nang (transferred from Hoang Van Thang)	1,099.4
560	Ng Thanh Chung- Nguyen Thi Hien (transferred by Tran van Su)	419.7
561	Tran Duc Che - Nguyen Thi Co (granted byTranDuc Loc)	5.0
562	Nguyen Thi Chin - Tang Huu Moc (assets on public land)	1,547.8
563	Vo Quang Anh (transferred by Ngo Van Binh)	139.2
564	Tran Anh Tuan – Ng. Le Thu Ha (transferred by Tang ThiDong)	182.2
565	Nguyen Thi Hoa (Nguyen Thi Hue)	147.2
566	Ngo Van Son - Trinh Thi Xa	403.5
567	Nguyen Ngoc Bich - Do Thi Tinh	3,038.4
568	Ngo Van Xuat (1960)	804.6
569	Nguyen Dinh Lot - Vuong Thi Tan	502.4
570	Hoang Thi Nhi - 1967 (Do Van Mui)	608.3
571	Nguyen Van Xuan (Transferred from Nguyen Van Hao)	222.2
572	Chu Xuan Binh – 1954 (transferred by Nguyen Van Hao)	419.3
573	Nguyen Dinh Chien (transferred by Tran Van Trong)	331.7
574	Vu Hal Van - Vu Dieu Huong (transferred by Do Van Han)	472.5
575	Nguyen Van Thanh 1968 (transferred by Nguyen Van Hue)	298.6
576	Vu Thuy Ha (transferred by Do Van Toan)	916.1
577	Tran Van Trong - Ngo Thi Ve	87.8
578	Vu Duc Lu (transferred by Do Van Thanh)	307.9
579	Ng Dinh Tam - Ngo Thi Lam (transferred by Ng Van Nghia)	368.8
580	Pham Van Vinh - Nguyen Hal Yen (transferred by Ng Van Hue)	344.4
581	Vo Quang Anh (Vo Van At) (transferred by Ngo Thi Man)	322.3

582	Nguyen Thi Minh Sang (transferred from Dao Xuan Suu)	50.3
583	Ngo Van Tinh - Bui Thi Gam	330.1
584	Nguyen Van An – 1933	485.1
585	Nguyen Van Tuyen - Nguyen Thi Khuong	407.1
586	Do Van Mui – 1963	1,184.6
587	Tran Van Khoi - Hoang Thi Dien	209.3
588	Nguyen Dinh Thao – 1957	292.5
589	Hoang Thi Dau (Nguyen Dinh Thang)	325.1
590	Le Hoang Lan - Pham Anh Tuan (transferred by Ng. Tien Son)	2,131.8
591	Nguyen Thi Loc – 1954 (transferred from Nguyen Van Sinh)	225.0
592	Nguyen Thanh Trung - Pham Vu Thien Nga (transferred by Ngo Van Huong & Ngo Van Yen)	511.0
593	Phung Xuan Dan - Nguyen Thanh Chung (transferred from Nguyen Tien Hung)	198.1
594	Nguyen Van Toan - Hoang Thi Phuong (transferred by Nguyen Tien Hung)	135.8
595	Nguyen Tri Dung - Le Thi Huong Giang (transferred by Ngo Nhat Luong; Ngo Gia Lap; Ngo Van Nghi)	934.7
596	Nguyen Thi Phuong – 1969 (Transferred from Ngo Gia Lap)	225.0
597	Nguyen Van Hon – 1963 (Transferred from Ngo Van Ngot)	225.0
598	Ng Huu Toi – Ng Thi Huong (transferred by Nguyen Van Quang)	1,696.6
599	Do Thi Tuyet Nga – 1963 (Transferred from Ngo Duc La)	225.0
600	Do Thi Cuc – 1960 (Transferred from Ngo Van Toi)	225.0
601	Dao Xuan Thang - Ngo Thi Ngoan	308.7
602	Le Van Hai - Dao Thi Hoa (transferred by Dao Xuan Thang)	607.8
603	Dinh Cong Ty - Le Thi Cuc	72.8
604	Nguyen Thi Thanh (1974) (Transferred by Dao Thi Loi)	450.0
605	Le Thi Lang – 1969 (Transferred from Nguyen Van Cu)	225.0
606	Ngo Van Gioi - Dao Thi Lien	547.4
607	Ngo Thi Men - 1982 (Granted by Ngo Gia Lap)	574.1
608	Ng Van Hiep (1974) (transferred by Dao Xuan Luat - Dao Xuan So)	2,683.1
609	Ngo Thi Lan - Nguyen Trung Quang	254.9
610	Nguyen Van Tai - Dao Thi Thom	106.8
611	Tran Duc Gia - Dao Thi Hien	318.0
612	Nguyen Thi Thang	708.1
613	Dao Xuan Chi - Dinh Thi Tan	241.0
614	Ngo Van Dong – 1938	525.1
615	Tran Duc Yen - Nguyen Thi Loan	226.7
616	Dinh Cong Minh	36.5
617	Do Thi Tinh - Nguyen Ngoc Bich	1,385.1
618	Dao Xuan Binh - Quach Thi Tu	212.3
619	Ngo Van Ngai – 1930	3,393.6
620	Hoang Trung Thuyet - Hoang Thi Huong	33.0
621	Ngo Van Quang – 1985	469.8
622	Do Van Thanh – 1964	573.0
623	Nguyen Thi Lan (Do Quy Vuong)	608.6
624	Tran Van Toan - Le Thi Thanh	419.7

625	Tran Van Toan - Đặng Thi Huong	444.9
626	Do Van Toan - Nguyen Thi Hien	329.3
627	Nguyen Van Hung - Nguyen Thi Thuy	157.0
628	Do Tang Gia - Pham Thi Ca (transferred by Nguyen Van Nghia)	1,206.9
629	Do Thi Sau	465.8
630	Nguyen Thi Hay - Do Van Tuat	548.8
631	Do Van Toi - Ngo Thi Thu Hang	1,050.3
632	Do Van Han	212.9
633	Khuat Thi Duy	198.8
634	Tran Duc Da - Nguyen Thi Lien	61.6
635	Ngo Van Son - Trinh Thi Xa	556.7
636	Dinh Cong Minh	63.5
637	Nguyen Dinh Lich	792.7
638	Do Thi Yen (Nguyen Dinh Tong)	445.9
639	Nguyen Van Tinh - Nguyen Thi Sinh	3,317.4
640	Dinh Quynh Giang	360.0
641	Nguyen Van Hue - Nguyen Thi Thieu	992.0
642	Pham Thi Ca (transferred by Nguyen Van Hue) Do Tang Hanh – 1957	1,392.3
643	Hoang Thi Hue – 1961	592.6
644	Nguyen Van Nghia - Ngo Thi Hue	390.0
645	Nguyen Thi Lien – 1933	200.0
646	Do Van Nam - Nguyen Thi Duong	1,250.3
647	Hoang Van Thang - Nguyen Thi San	156.9
648	Nong Quoc Diep (transferred from Tran Duc Bu)	360.0
649	Nguyen Truong Tu (1965) assets on public land	496.6
650	Nguyen Thi Kim Thanh (assets on public land)	697.7
651	Nguyen Trong Tu – 1965 (assets on public land)	399.2
652	Ngo Thi Ngo (1966) (assets on public land)	2,711.9
653	Nguyen Thi Kim Thanh (assets on public land)	757.4
654	Nguyen Thi Kim Thanh (assets on public land)	468.8
655	Nguyen Thi Kim Thanh (assets on public land)	1,014.8
656	Nguyen Thi Kim Thanh (assets on public land)	641.4
657	Nguyen Thi Thanh Huong (1956) Assets on public land	1,313.5
658	Hoang Thuy Ha – 1957 (Assets on public land)	319.6
659	Nguyen Tuan Dung (1982) Assets on public land	759.8
660	Nguyen Thi Kim Thanh (1961) (Assets on public land)	180.9
661	Nguyen Thi Kim Thanh (Assets on public land)	217.3
662	Ng Thi Kim Thanh – 1961 (transferred by Hoang Van Thuong)	659.5
663	Nguyen The Anh (1984)	241.6
664	Vu Thi Diep (1957) Transferred by Hoang Thi Hue	224.7
665	Hoang Thi Hao (Transferred from Hoang Van Thuong)	916.9
666	Nguyen Van Ta (Transferred from Nguyen Xuan Bui)	1,362.0
667	Ngo Xuan Thoa - Le Thi Nga	1,406.8
668	Nguyen Duy An (Transferred from Nguyen Xuan Bui)	1,193.0
669	Nguyen Thi Cham (Transferred from Quach Dinh Cam)	719.4
670	Phi Van Viet (transferred from Tran Duc Hung)	313.8

671	Nguyen Thi Yen (transferred from Quach Dinh Cam)	313.2
672	Nguyen Trung Hieu (transferred from Ngo Van Ngai; Ngo Van Ngach)	1,196.1
673	Nguyen Xuan Deo 1950	356.2
674	Ngo Van Chuc - Ngo Thi Ty	25.9
675	Ngo Van Le - Ta Thi De	190.9
676	Ngo Van Gioi - Dao Thi Lien	461.6
677	Dao Xuan Hung – Ng Thi Tham (transferred by Nguyen Van Toi)	511.7
678	Tran Duc Nhan - Do Thi Dinh	123.1
679	Dinh Cong Thoa - Phung Thi Mai	384.0
680	Ngo Thi Hoa - Do Van Xuat	1,128.0
681	Tran Duc Viet - Bui Thanh Thuy	759.8
682	Quach Dinh Thuan	99.0
683	Ho Thi Nghia	3,443.9
684	Tran Van Dy - Nguyen Thi Cau	125.8
685	Tran Van Trong - Ngo Thi Ve	998.0
686	Ngo Van Cuong - Chu Thi Thuy	424.0
687	Nguyen Thi Nhan	424.0
688	Hoang Anh Thang	1,684.5
689	Nguyen Thi Mien (Nguyen Thi Yeu)	395.2
690	Do Anh Tai - Nguyen Thi Tuyet	216.0
691	Ho Thi Nghia	909.7
692	Tran Van Ngoc - Le Thi Tinh	526.5
693	Quach Thi Huong	86.3
694	Do Van Hong - Nguyen Thi Nga	343.7
695	Nguyen Van Nhung - Bui Thi Nghia	365.7
696	Dao Xuan Chi - Dinh Thi Tan	361.1
697	Vu Thi Bon	507.6
698	Nguyen Thi Nu	507.7
699	Dao Van Trinh - Nguyen Thi Oanh	254.1
700	Dao Thi Chien	254.0
701	Ngo Van Lam - Nguyen Thi Hang	317.0
702	Le Xuan Hung - Ngo Thi Hoa	221.2
703	Can Thi Kim Truc	154.6
704	Le Xuan Hung - Ngo Thi Hoa	100.0
705	Quach Thi Huong	417.2
706	Ng Cong Hoan	378.3
707	Ngo Xuan Thoa - Le Thi Nga	917.1
708	Ngo Van Thon - Nguyen Thi Xuan	548.1
709	Dao Thi Loi	248.2
710	Ngo Gia nang - Trinh Thi Coi	146.4
711	Dao Xuan Ngoc - Vuong Thi Toan	246.7
712	TranDuc Gia	34.5
713	Binh Yen CPC	210.3
714	Tran Thi Hoi	93.2
715	Nguyen Thi Lan	60.1
716	Dao Quoc Bao - Nguyen Thi Bich Phuong	101.6

717	Dao Xuan Khang - Nguyen Thi Sau	301.0
718	Binh Yen CPC	424.8
719	Nguyen Van Sinh - Ngo Thi Dat	357.3
720	Ngo Thi Dai	63.5
721	Ngo Van Gioi	47.6
722	Ngo Van Ngai	63.6
723	Quach Dinh Cam	260.6
724	Dao Xuan Luat	86.5
725	Ngo Van Son	96.0
726	Quach Dinh Hung	55.6
727	Tran Duc Hung - Do Thi Sang	848.0
728	Ngo Van Tuyen	207.8
729	Pham Thi Tam - Nguyen Khac Binh	87.8
730	Nguyen Van Nghia - Ngo Thi Hue (supplement assets)	-
731	Do Van Han	60.0
732	Nguyen Thi Bao – 1962 (supplement assets)	94.9
733	Dao Xuan Ne - Ta Thi Nghi	593.7
734	Tran Duc Che - Nguyen Thi Co	404.7
735	Do Van Cu (1957) (Nguyen Thi Xuyen; Vu Thi Kinh)	253.4
736	Do Van Huynh - Nguyen Thi Sam	172.3
737	Nguyen Thi Ly (Pham Ngoc Khien)	450.4
738	Ngo Thi Nam	28.0
739	Ngo Thi Tich	141.1
740	Tran Duc Gia	198.4
741	Nguyen Van Cu - Ngo Thi Nghia	29.5
742	Ngo Van Tuong	55.8
743	Ngo Van Thong - Kieu Thi Dap	23.1
744	Ngo Van Son - Trinh Thi Xa	220.6
745	Nguyen Thi Hoa	389.5
746	Ngo Xuan Thuy	137.8
747	Binh Yen CPC	1,440.2
748	Ngo Van Dong - Khuat Thi Thai	8.2
749	Tran Duc Che	61.3
750	Ngo Van That	123.1
751	Nguyen Van Dong - Nguyen Thi Oanh	238.7
752	Quach Dinh Nghia - Ta Thi Mai	351.9
753	Tran Duc Lien	291.2
754	Tran Duc Hung - Ngo Thi Hoa	628.0
755	Ngo Gia Lap	309.0
756	Vuong Thi Thao	437.0
757	Ngo Van Huong	435.0
758	Dao Xuan So	420.0
759	Dao Xuan Thanh	432.0
760	Ngo Van Son	250.0
761	Khuat Duy Dat	137.0
762	Tran Duc That	629.5

763	Le Xuan Hung - Ngo Thi Hoa	145.0
	Total	527,442.7

Source: IRR No. 7 (2nd Quarter 2014).