

Environmental Monitoring Report

Project No. 42466-017
Semestral Report (January to June 2021)
June 2021

Bangladesh: Skills for Employment Investment Program - Tranche 3

Prepared by Skills Development Coordination and Monitoring Unit (SDCMU), Skills for Employment Investment Program (SEIP) under Finance Division, Ministry of Finance and the Asian Development Bank.

Semi-annual Environmental Monitoring Report

Project No. 42466-017
June 2021

ADB L3839-BAN(COL): Skills for Employment Investment Program (SEIP) Tranche 3

Prepared by Skills Development Coordination and Monitoring Unit (SDCMU), Skills for Employment Investment Program (SEIP) under Finance Division, Ministry of Finance and the Asian Development Bank.

This environmental monitoring report is a document of the borrower. The views expressed herein do not necessarily represent those of ADB's Board of Directors, Management, or staff, and may be preliminary in nature.

In preparing any country program or strategy, financing any project, or by making any designation of or reference to a particular territory or geographic area in this document, the Asian Development Bank does not intend to make any judgments as to the legal or other status of any territory or area

List of Acronyms

BACI	=	Bangladesh Association of Construction Industry
BITAC	=	Bangladesh Industrial Technical Assistance Center
BMET	=	Bureau of Manpower, Employment and Training
CBLM	=	Competency-Based Learning Material
CS	=	Competency Standard
EARF	=	Environmental Assessment and Review Framework
EMP	=	Environmental Management Plan
IEE	=	Initial Environmental Examination
KOICA	=	Korea International Cooperation Agency
MoU	=	Memorandum of Understanding
NHRDF	=	National Human Resource Development Fund
NSDC	=	National Skills Development Council
NSDP	=	National Skills Development Policy
PKSF	=	Palli Karma-Sahayak Foundation
RF	=	Resettlement Framework
SWAp	=	Sector Wide Approach
SEIP	=	Skills for Employment Investment Program
SECPF	=	Small Ethnic Communities Planning Framework
SECPP	=	Small Ethnic Communities Peoples Plan
SPS	=	Safeguard Policy Statement
TMS	=	Training Management System
TTC	=	Technical Training Center
TVET	=	Technical and Vocational Education and Training

Table of Contents

LIST OF ACRONYMS	III
TABLE OF CONTENTS	IV
EXECUTIVE SUMMARY	V
I. INTRODUCTION	1
II. ENVIRONMENTAL MONITORING	9
III. ENVIRONMENTAL MANAGEMENT	12
IV. CONCLUSION AND RECOMMENDATION	23
ANNEX 1: SITE PICTURES	24
ANNEX 2: LIST OF NOCS FROM DIFFERENT AGENCIES	26
ANNEX 3: COVID-19 SAFETY PLAN SUBMITTED BY THE CONTRACTORS	33

Executive Summary

Under Tranche 3, SEIP supports the construction of two training facilities to the Bangladesh Industrial Technical Assistance Centre (BITAC) at Tejgaon, Dhaka and Bangladesh Association of Construction Industry (BACI) at Uttara, Dhaka. The initial environmental examination (IEE) report, along with environmental management plan (EMP) has been prepared and disclosed in June 2019.

The project Tranche-3, has been categorized as “B” considering possible environmental point of view under the ADB’s SPS and expected to have limited and minimum adverse environmental impact. According ECR-1997 of Bangladesh, the construction of the training centers (BITAC and BACI) is listed in schedule-1 and categorized as Orange B. In line with the IEE, there is no threat of hampering resettlement of small ethnic community people, or agricultural land due to project.

The semi-annual report presents the status of project implementation, details of compliance with environmental regulations of the Government and policies of ADB, details of compliance with environmental loan covenants and the status of compliance with various aspects of EMPs. In this report the performance indicators of environmental works under the proposed civil works under tranche 3 have been summarized and presented.

In this reporting period, construction at both sites have been started and following respective EMP and Occupational Health Safety Guidelines. Orientation on Pandemic COVID-19 has been provided to the Construction workers, site engineers and staffs of both BITAC and BACI sites.

The contractors provided the detail plan for COVID-19 pandemic with health & safety plan for each site. SDCMU is ensuring the implementation of the COVID-19 plan during the construction phase.

MoU has been signed among SEIP, BITAC & Korea University of Technology and Education (KOREATECH) for developing BITAC as modern Training center. The detail proposal on course curriculum development, TO & HR (managers) training is ongoing.

I. Introduction

1.1 Background

The Skills for Employment Investment Program (SEIP) will support the Government of Bangladesh's reforms in skills development articulated in the National Skills Development Policy (NSDP). It will catalyze the private sector to provide market responsive skills development and strengthen public training institutions to ensure skills development is responsive to identified industry skills needs and emerging labor market trends. Large-scale private sector involvement and public-private partnership is critical in reducing existing skills gap and enabling Bangladesh to move from the current "low-skill, low-wage equilibrium" to a higher skill, higher wage equilibrium. The investment program will assist the government to scale up skilling of new entrants and upskilling of existing workers to increase their productivity and income levels, which in turn will contribute to accelerating economic growth in priority sectors. The investment program builds on the government's ongoing efforts to strengthen the skills development ecosystem by establishing a unified funding mechanism and enhancing overall coordination of the fragmented skills development system.

1.2 Impact and Outcome

The impact will be increased income and productivity of the working population aged 15 and over, aligned with NSDP. The outcome will be increased employment in priority sectors and skills for males and females.

The outcome for Tranche 1 will be increased inclusive access to skills training in priority sectors. The outcome for Tranche 2 will be increased inclusive access to basic, mid-level, and managerial skills training in priority sectors. The outcome for Tranche 3 will be increased inclusive access to basic, mid-level, and advanced skills training in priority sectors.

1.3 Outputs

The SEIP will be delivered over three overlapping interrelated tranches and will include four outputs: (i) market responsive inclusive skills training delivered; (ii) quality assurance system strengthened; (iii) institutions strengthened; and (iv) monitoring and management for skills development strengthened.

1.4 Scope of the Project

Tranche 3 is supporting the renovation and transformation of BITAC in Dhaka, which was originally established under the Ministry of Industries for the development of light engineering industry through training programs and consultancy services for small and medium businesses. BITAC training facilities will be renovated to offer higher-end job-ready training courses in precision engineering, mechatronics, and electrical technology. The renovated BITAC will also focus on R&D and innovation for the enhancement of industry performance and prototype product development, in close collaboration with industries. The new BITAC building would set up an Industry Cooperation Center to support the upskilling of industry personnel and to foster close collaborations with the industry. In addition, Tranche 3 is also supporting the construction of training facilities for BACI to expand the training capacity in the construction sector.

1.5 Environmental Safeguards Category

Tranche 3 are supporting the renovation of BITAC training facilities and the new construction of BACI training facilities for construction skills training. The project has been categorized as B for environment under the ADB's Safeguards Policy Statement 2009 (SPS). It is expected to have limited and minimum adverse environmental impacts. Initial environment assessments have been carried out for the two sites of BITAC and BACI facilities, and environment management plans have been prepared in accordance with the environmental assessment review framework. Any potential environment impacts during construction are considered manageable as outlined in the environment management plan.

1.6 Physical Progress of Civil Works

The new BITAC building is under construction in the BITAC premises at Tejgaon, Dhaka and new training facilities for BACI at Uttara, Dhaka. The list of expected civil works contracts and estimated time for advertisements is below:

Table 1: Civil Works under Tranche 3 of SEIP

Contract No. and Name	Amount (\$ million)	Current Status
WD-01: Construction of BITAC Training Center (NCB)	7.50	Pilling works has been completed and foundation work is going on.
WD-02: Construction of BACI SDI (NCB)	3.00	Pilling work is going on.

1.7 Scope of the Report & Reporting Period

The scope of this monitoring report is specific to the project for the construction of BITAC training center and BACI training center. This report has covered the evaluation of effect of the mitigation measures described in the environmental management plan for the constructions and renovation of training facilities by the Bangladesh Industrial Technical Assistance Centre (BITAC) at Tejgaon, Dhaka and Bangladesh Association of Construction Industry (BACI) at Uttara, Dhaka respectively. The reporting period is January 2021 to June 2021

1.8 Purpose of Monitoring Reports

The Semi Annual Environmental Monitoring Report (EMR) presents the status of project implementation, details of compliance with environmental regulations of the Government of Bangladesh and safeguards policies of ADB, details of compliance with environmental loan covenants, details of complaints received and their redressal and the status of compliance with various aspects of EMP as stated in the IEE reports. In this report, the performance indicators of environmental works under the proposed civil works of tranche 3 has been summarized and analysed to measure the monitoring parameters. This semi-annual environmental monitoring report consists of three main parts: an Introduction section, Environmental monitoring, Environmental management and conclusion.

1.9 Package and Sub-project Wise Progress Status

SEIP Tranche 3 has been started from January 2020 consisting of four outputs. The detail of the activities along with progress are provided below:

a) Output 1: Market responsive inclusive skills training delivered

The SEIP aims to improve job skills of new entrants and the existing workforce in priority economic sectors identified by the government, in order to ensure required skills are available according to industry standards. The priority sectors targeted by SEIP under Tranche 1 are: (i) readymade garment and textile, (ii) construction, (iii) information technology (IT), (iv) light engineering and manufacturing, (v) leather and footwear, and (vi) shipbuilding. Three additional sectors are supported in Tranche 2: (i) agro-processing, (ii) tourism and hospitality, and (iii) nursing and caregiving. For Tranche 3, the renewable energy sector has been chosen for skills training which is under process. The process of developing and approval of business plans for the implementing partners are ongoing and most of the Business plans have been finalized.

As of 30 June 2021, 3,393 trainees have been certified out of whom 2,485 have been placed in job i.e. 73.24% under Tranche 3.

b) Output 2: Strengthening of quality assurance system

Tranche 3 will continue to support training of trainers, industry assessors and principals/managers from public and private training providers. The formation of master trainers will continue through a series of training programs, and master trainers will be engaged to deliver the training of trainers (TOT) programs. To further upskill the knowledge and domain skills of trainers, especially for advanced skills programs, trade-specific intense overseas training programs will be implemented for selected trade areas. MoU has been signed among SEIP, BITAC & Korea University of Technology and Education (KOREATECH) for developing BITAC as modern Training center. The detail proposal development of Course curriculum, TOT & HR (Managers) development plan is ongoing.

c) Output 3: Strengthening of institutions

- The detail engineering design and drawings for the BITAC training center with bidding documents also was finalized with prior reviewed by ADB. The bid was floated on 28th June 2020 and the Contract was made on 24 December 2020. The construction work of BITAC is ongoing.
- For BACI package, contract was made on 16 November 2020. The contractor has started pilling work. The site Engineer is on board to supervise the construction works.

d) Output 4: Monitoring and management for skills development strengthened

Tranche 3 will support SDCMU to roll out an online financial management system (FinMan) and to implement comprehensive financial management capacity building programs that include (i) orientation workshops on FM manual and other financial management requirements under SEIP training; (ii) follow-up capacity building at the field level to provide hands-on support to financial management personnel; and (iii) continuous follow-up and support to carry out all FM requirements under SEIP. The implementation of the above activities is in under process.

1.10 Document Preparation for IEE/EIA

The IEE for the project of Skills for Employment Investment Program Tranche 3 for Construction of two new training centres were prepared and disclosed in June 2019. The SEIP

tranche-3 project has been classified as Category “B” as per the ADB Environmental Policy as stated in the SPS-2009.

1.11 Status on Relevant GOB Permits

The status for taking initiatives for approval is as below and copies are attached as Annex 2.

Table 2: List of NOCs from Different Agencies:

SL	Permits	BITAC Site	BACI Site
1	NOC from Civil aviation Authority	Received	Received
2	NOC from Fire Service & Civil Defense Authority	Received	Received
3	NOC from DoE	Submitted for approval	Received
4	NOC from RAJUK	N/A (not required for government land)	Received

1.12 Summary Qualitative and Quantitative Monitoring Data

The construction works of BITAC and BACI training centres have been started and works are going on.

BITAC: Two labour sheds, toilets for male and female have been constructed. The water supply at toilet is in adequate and suggested to provide pipe water for toilet purpose. The construction materials should be improved and suggested to enhance ventilation system inside the labour sheds.

PPE, first aid boxes, soap and water are available at site. Hand sanitizers are available at site office. Infrared thermo meter is also available at BITAC site. An Environmental Officer is working at site appointed by the Contractor who is looking all the environmental issues as mentioned in the EMP. From SEIP side, a Construction Supervision Engineer is ensuring the implementation of EMP with assistances from Environmental Expert and Civil Engineer of SEIP.

Environmental parameters like air quality, noise level, ground water quality has yet not been collected and tested by the Contractor of BITAC. He informed that he will complete all the said tests as soon as possible. The Contractor is going to make an agreement with a firm to monitor air, noise and water quality tests as per EMP. No COVID-19 patient or accident's report has been found at the site. Twenty-five participants participated in the orientation session on Health Safety and COVID-19 practice at BITAC for both sites (BITAC and BACI).

BACI: Two labour sheds have been constructed at BACI site. Pilling work is continuing. A toilet has been constructed at the north-east corner of the site. Water extracting by submergible pump and storing into the GAZI tank. The water is using for both domestic and drinking purpose. Construction materials of the shed are moderate. The Contractor has been suggested to improve the quality of labour shed, toilet and kitchen. Labours from BACI was participated in the Occupational Health Safety and COVID-19 safety practice orientation session which was organized by SEIP.

Figure 1: Orientation on OHS and COVID-19 safety Practices at BITAC



1.13 Training and Capacity Building Activities

The details of training and capacity building programs conducted during reporting period presented in the following format.

Table 3: Training and Capacity Building Activities

Date	Name of the Training (i.e., EMP, H&S etc.)	Trainers Details	No. of Participants
10.6.2021	Orientation on Occupational Health Safety and COVID-19 safety practices	Contractor, Project Manager, EHO, Site Engineer, Site Supervisors, Workers of different categories	25

1.14 Summary of Key Issues and Remedial Actions

Construction works has been started recently and the works are going without hampering the surrounding environment. No issues have been observed for rectification during this reporting period.

Table 4: Registered Non-Compliance Issues

Sl.	Name of Activities	Type of Non-Compliances Recorded	Date of Corrective Action Request (CAR)	Compliance Status	Photo before Rectification	Photo after Rectification
	None					

1.15: Summary of Accidents/Incidents

Construction works has been started recently and the works are going without causing any accident or incident in this reporting period. Accidents and other incidents, if any, should be recorded as per following format:

Table 5: Accident/Incident Register

SI	Description	From January-June 2021	Till June 2021
1	Fatal Accidents	Not reported	Not reported
2	First Aid Cases (FAC)	Not reported	Not reported
3	Near Miss	Not reported	Not reported
4	Toolbox Talks	Workers discuss on safety issues in the site	Continuing

1.16 Grievance Register

The site-specific Grievance Redress Mechanism (GRM) has been established to receive, evaluate, and facilitate the solution of affected people's (Aps) concerns, complaints and grievances concerning the social and environmental performance of the subproject. The GRM is aimed to provide a time-bound and transparent mechanism to voice and resolve social and environmental concerns linked to the development works. Complaints will be entered in a registrar following the table below. Till now, no complaint has been received from any person regarding the site and its activities.

Table 6: Complaints Registered

Complaint Number	Date	Complaint through (phone/letter/site)	Name of Complainer	Complaint Details	Action Taken by Contractor/ PMU/CSC	Date Case Resolved (days required)	Remarks: Further Action, if any
Subproject/work-package Name:							
		Not reported yet					

1.17 Methods of Monitoring Parameters/Indicators

The construction works at both sites (BITAC and BACI) have been started. The following parameters are being monitoring in line with the IEE of Tranche 3.

Table 7: Environmental Monitoring Parameters & Methods

No	Environmental Issues /Parameters	Monitoring Method		
		Method	Location	Duration / Frequency
1. Pre-Construction Phase				
1.1	Tree plantation	Visual inspection	In the site	During the pre-construction period
2. Construction Phase				
2.1	Topography and Landscape Changes	Inspection	In the work site	Construction stage/ Weekly inspection
2.2	Air Quality	Visual inspection is suggested since no sensitive areas nearby	In the work site	Daily
2.3	Wastes and drainage congestion	Record of kinds and quantity of waste, and the disposal method	In the work site and Worker's camp	Daily
2.4	Disturbance to Existing Social Infrastructure and Services	Record of numbers construction vehicles	Project site	Continuous Record
2.5	Infectious Diseases such as COVID-19, HIV/AIDS	Labor health record	Related institutions	Twice a year
2.6	Work condition (including work safety)	Record of accidents	Contractor's office	Continuous Record
2.7	Accidents	Record of accidents	Contractor's office	Continuous Record
2.8	Disturbance to Community traffic and installation of proper road signage	Records of road signage implemented, visual inspection	Along the approach road	Continuous record

No	Environmental Issues /Parameters	Monitoring Method		
3. Operation Phase				
3.1	Accidents	Record of accidents and fire	Along the road and buildings	Continuous Record

Table 8: Environmental Parameters for Monitoring during Construction Phase of the Sites (BITAC and BACI)

Issues	Parameters	Locations	Monitoring Frequency
Ambient Air Quality	Air quality monitoring through lab test; Control air pollution and dust blowing Air quality (PM10, PM 2.5, SOx, NOx, SO2)	Around the project site	Once in a quarter
Noise level	Around the Project site and nearest receptor	Around the Project site and nearest receptor	Once in a quarter
Ground Water	pH, TDS, Ammonia Nitrate, Phosphate, As, Fe, TDS, Mn and Coliforms	Near the Project Site	Once in a Year

1.18 Implementation Arrangements

Project management comprises at four levels. At the highest level, the executing agency is the Finance Division headed by the Secretary under the Ministry of Finance (MOF). The project steering committee (PSC) chaired by the secretary of the Finance Division includes selected members from the Executive Committee of the NSDA, national project director, and other representatives from key ministries and institutions, with the executive project director (EPD) of SEIP as the member-secretary.

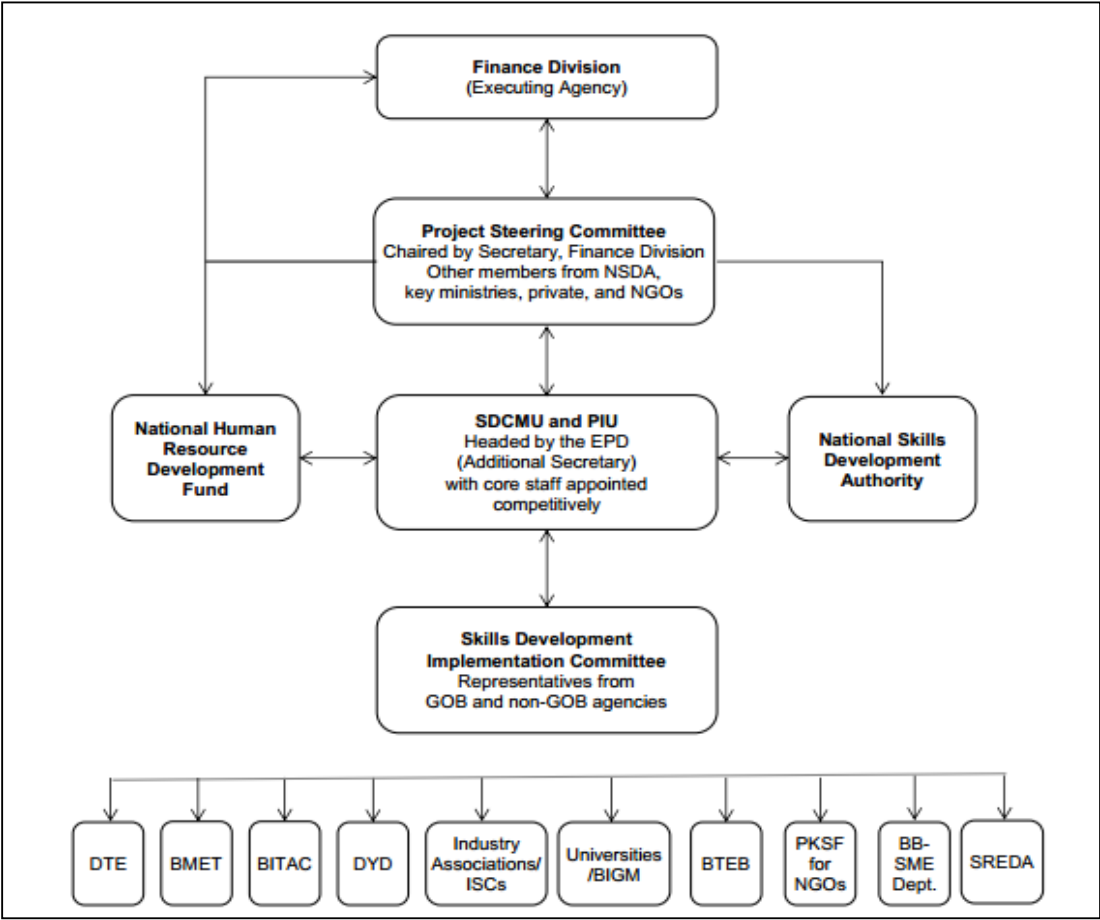
At the second level a project implementation unit is headed by the national project director. The national project director provides policy advice, review funding, and release funds for SEIP.

At the third level is the Skills Development Coordination and Monitoring Unit (SDCMU) headed by the EPD, which is serving as the program management unit. All the staff of the SDCMU are recruited competitively with required expertise and experience. The SDCMU is responsible for facilitating, coordinating, and monitoring the implementation of SEIP.

At the fourth level, the Skills Development Implementation Committee (SDIC) headed by the EPD with representatives from all the partner agencies are providing a common forum to discuss implementation issues and to make joint efforts to resolve problems emanating from implementation. If problems cannot be resolved at this level, these will be escalated to the PSC level for resolution.

In SDCMU level, DEPD (Public) is the focal person for monitoring and reporting the safeguard related components. With the assistance of Environmental Expert, Construction firms are implementing the EMPs. In addition, the construction supervision consultant is supervising the EMPs activities in close consultation with SDCMU.

The flow chart shows the reporting lines' essential internal structures of key organizations:



II. Environmental Monitoring

2.1 Status IEE SEMP

The physical work at both sites (BITAC and BACI) have been started. Site specific Environmental Impact Monitoring Plan has been prepared and mentioned in the IEE. The environmental issues which have been identified in the IEE are under monitoring at sites as per suggested time and ensuring mitigation measures at the respective site. Environmental Officers from the Contractor side are monitoring the environmental mitigations and time to time supervised by the Environment Expert of SEIP at BITAC site. Necessary instructions are provided to the Contractors orally and by written through Environmental Site Order Book.

2.2 Monitoring Parameters' Status (Monitoring Plan)

The status of the monitoring parameters is stated below. The table has been compiled from IEE report under SEIP Tranche 3.

Table 9: Environmental Monitoring Plan for the BITAC and BACI

No	Environmental Issues	Significant Impact	Purpose of the Monitoring	Monitoring Method			Responsibility		Compliance Status
				Method of Collecting and Reporting Data	Location	Duration and Frequency	Implementation	Supervision	
1. Pre-Construction Phase									
1.1	Tree plantation	Tree felling (5 matures, couple of samplings /ornamental trees) are expected at BITAC site. However, space is congested and there is no scope of replantation at the site. However, there is scope of plantation at BACI site. Tree planation at this site will improve the site's environmental significance as the site has been sand filled by Rajuk for development which was a precious wetland.	<ul style="list-style-type: none">Improvement of existing environment	Visual inspection	In the site	During the pre-construction period	Contractor	BACI, construction Supervision consultant, Environmental Expert-SEIP.	Will be complied after construction
2. Construction Phase									
2.1	Topography and Landscape Changes	Excavation along the edge of the building alignment will leave large unsafe holes.	<ul style="list-style-type: none">Restoration of changes due to construction activitiesVisual amenity	Inspection	In the work site	Construction stage/ Weekly inspection	Contractor	Construction Supervision Engineer, BITAC/BACI Environmental Expert-SEIP.	Being Complied. Retaining piles constructed.
2.2	Air Quality	<ul style="list-style-type: none">Dust resulting from construction workExhaust gas from construction machinery and vehicles used for mobilization of equipment	Evaluation of effect of the mitigation measure towards air pollution	Visual inspection is suggested since no sensitive areas nearby	In the work site	Daily	Contractor	Construction Supervision Engineer, BITAC/BACI, Environmental Expert-SEIP.	Being Complied. Uses ready-mix concreting and control earth cutting time
2.3	Wastes and drainage congestion	<ul style="list-style-type: none">Construction waste from construction workDomestic waste from workersHazardous waste such as dry batteries, etc.	Evaluation of effect of the mitigation measure for waste	Record of kinds and quantity of waste, and the disposal method	In the work site and Workers camp	Daily	Contractor	Construction Supervision Engineer, BITAC/BACI, Environmental Expert-SEIP.	Being Complied. Surface drain constructed.
2.4	Disturbance to Existing Social Infrastructure and Services	<ul style="list-style-type: none">Increase in traffic Jam is expected to be lowIncreased road traffic may disturb the local residents	Evaluation of effect of construction schedule	Record of numbers construction vehicles	Project site	Continuous Record	Contractor	Social Safeguards Expert, BITAC/BACI	Being Complied. Construction worked at late night

		<ul style="list-style-type: none"> Traffic jams caused by increased vehicles during construction 							
2.5	Infectious Diseases such as HIV/AIDS/COVID-19	Temporary influx of migrant labor during construction may increase risk of infection	Evaluation of sanitation for labor	Labor health record	Related institutions	Twice a year	Contractor	Social Safeguards Expert, BITAC/BACI	Being Complied. COVID-19 compliance following daily
2.6	Work condition (including work safety)	Labor accidents	Evaluation of effect of the work safety plan	Record of accidents	Contractor's office	Continuous Record	Contractor	Social Safeguards Expert, BITAC/BACI	Being Complied. No accident happened
2.7	Accidents	Traffic accidents	Evaluation of effect of traffic schedule	Record of accidents	Contractor's office	Continuous Record	Contractor	Social Safeguards Expert, BITAC/BACI	Being Complied. No accident happened
2.8	Disturbance to Community traffic and installation of proper road signage	Traffic accidents, number of events are expected to be low	Evaluation of effect of the work safety plan, Evaluation of effect of traffic schedule	Records of road signage implemented, visual inspection	Along the approach road	Continuous record	Contractor	Environmental Expert-SEIP./social safeguards specialist, BITAC/BACI	Being complied
3. Operation Phase									
3.1	Accidents	<ul style="list-style-type: none"> Traffic accidents 	Evaluation of effect of the work safety plan	Record of accidents and fire	Along the r	Continuous Record	BACI/BITAC and all other SEIP institutes	BACI/BITAC and all other SEIP institutes	Will be complied

III. Environmental Management

3.1 Compliance with Environmental Mitigation and Management Plan (EMP)

The compliance status for the Environmental Mitigation and Management Plan is given below:

Table 10: Compliance Status with Environmental Mitigation and Management Plan (EMP) for BITAC

Ref. No.	Impact/Issue	Mitigation Measure	Responsibility	Status of the Compliance
1. Demolition Phase				
1.1	Planning of demolition It is expected that manual demolition work will take place. If demolition is not planned properly, can create nuisance with deadly hazards. Absence of proper safety cautions, debris disposal and spoils managements plan etc can create havoc local environmental and even can cause death to demolition workers. Given the BITAC hostel to be demolished is single storied, thus risk is relatively low.	Developed a decommissioning plan for the proposed site including risk assessment and management plan for debris disposal, worker safety, solid waste management plan before construction starts. This was the contractor's responsibility and was supervised by the Construction Supervision Engineer and EHO Consultant.	BITAC authority and contractor, Environmental Expert (EE)-SEIP will monitor the mitigations.	Complied
2. Construction Phase				
2.1A	Obtain ECC from DoE;	Submitted for ECC to DoE	BITAC	Being complied
2.1	Topsoil loss followed by soil erosion <ul style="list-style-type: none"> Significant excavation, cut and fill is expected. 11 story building will also need concrete mixing, although the extent of time may not exceed couple of weeks. The proposed sites are on relatively flat land. BITAC site is on enclosed built-up area. The impacts are negative but short/medium term, site-specific within a relatively small area and reversible by mitigation measures. 	<ul style="list-style-type: none"> Utilizing readily available sources of materials. If contractor procuring materials from existing burrow pits and quarries, causing less cut and fill that leads to top soil loss. Burrow areas and quarries are complying with environmental requirements, as applicable. 	BITAC authority, CSC, EO and contractor, EE-SEIP will monitor the mitigations.	Being complied
2.2	Noise Impacts <ul style="list-style-type: none"> Construction noises may hamper every day 	<ul style="list-style-type: none"> Contractor fixed signboards in the construction areas with warning signs and 	BITAC authority, CSC, EO and contractor, Env.	Being complied

Ref. No.	Impact/Issue	Mitigation Measure	Responsibility	Status of the Compliance
	<p>educational activities of the students and teachers at BITAC site</p> <ul style="list-style-type: none"> Temporary increase in noise level and vibrations may be caused by excavation equipment, and the transportation of equipment, materials, and people. Noise Impact on construction workers The impacts are negative but short-term, site-specific within a relatively small area and reversible by mitigation measures. 	<p>texts that work is ongoing in the noise hazard areas. Workers in a posted noise hazard area are suggested to use hearing protection devices.</p> <ul style="list-style-type: none"> Utilizing comparatively better quality vehicles and machineries to limit noise and exhaust emissions, and ensuring that these are maintained to manufacturers' specifications at all times. All vehicles and equipment are using in construction site not fully fitted with exhaust silencers. Using generators which is making comparatively lower sound and smoke. To reduce noise pollution, the contractor is using mortar from ready mix plant. 	Expert (EE)-SEIP is monitoring mitigation measures.	
2.3	<p>Water Pollution</p> <p>Excavation, run-off from stockpiled materials, and chemical contamination from fuels and lubricants may result to silt-laden runoff during rainfall, which may cause siltation and reduction in the quality of adjacent bodies of water, especially at BACI site</p>	<ul style="list-style-type: none"> BITAC site is well drained. The Contractor of the Project is carrying muddy by special made dump truck and carrying to the outside the main city which is using for filling low lying areas. Following the general Waste Management Plan 	BITAC authority, CSC, EO and contractor, EE-SEIP is monitoring mitigation measures.	Being complied
2.5	<p>Air Quality:</p> <ul style="list-style-type: none"> Conducting works at dry season and moving large quantity of materials may create dusts and increase in concentration of vehicle-related pollutants (such as carbon monoxide, sulphur oxides, particulate matter, nitrous oxides, and hydrocarbons) which will affect people who live and work near the sites. The impacts are negative but short- 	<ul style="list-style-type: none"> The proposed site at BITAC is within busy campus. Therefore, air pollution and public disturbance is expected from construction works and construction vehicles. Provide dust-proof measures like construction barrier at concrete mixing station, or mix concrete inside building to effectively control dust pollution. Water in due time the construction site on non-rainy days, including the road section in construction and major transportation road. 	BITAC authority, CSC, EO, Contractor, EE-SEIP is monitoring mitigation measures.	Being complied

Ref. No.	Impact/Issue	Mitigation Measure	Responsibility	Status of the Compliance
	term, site-specific within a relatively small area and reversible by mitigation measures.	<ul style="list-style-type: none"> Watering frequency are determining by the site Supervision Engineer according to the site requirements. 		
2.6	Community Health and Safety: <ul style="list-style-type: none"> Exposure to physical hazards from use of heavy equipment and cranes; trip and fall hazards; Construction works will impede the access of residents and businesses in limited cases. The impacts are negative but short-term, site-specific within a relatively small area and reversible by mitigation measures. 	<ul style="list-style-type: none"> Contractor's activities and movement of staff are restricted to designated risky construction areas. Use small mechanical excavators to attain faster excavation progress. For rock and concrete breaking, use non-explosive blasting chemicals, silent rock cracking chemicals, and concrete breaking chemicals. Under no circumstances may open areas or the surrounding bushes be used as a toilet facility. Create traffic regulation and diversion zones during construction work. The proposed site is on the main road, and it is expected that heavy vehicle movements can cause traffic nuisance. Therefore, traffic regulation and diversion will be important to avoid traffic nuisance. A generic Traffic Management Plan (TMP) is attached with this IEE. 	BITAC authority, CSC, EO, Contractor, EE-SEIP is monitoring mitigation measures.	Compliances and restrictions have been ensured in the site
2.7	Waste generation <ul style="list-style-type: none"> The site is expected to generate construction waste. Without proper management, this will pollute soil, water and air and spread public nuisance 	<ul style="list-style-type: none"> Update the 'Waste Management Plan and get approval from site supervising engineer and environmental officer. Conduct separate waste collection and promote recycling and reuse. Appropriate disposal of non-recyclable waste according to rules Hazardous waste should be treated under the related regulation 	BITAC authority, CSC, EO, Contractor, EE-SEIP is monitoring mitigation measures.	Ensured Compliances. Still there is no hazardous waste are generated but a separate bin with cautionary sign and text has been kept in the site.
2.8	Worker's health and safety:	<ul style="list-style-type: none"> Comply with requirements of Government of Bangladesh Labour Law of 	BITAC authority, CSC, EO, Contractor, EE-	EE- SEIP has facilitated

Ref. No.	Impact/Issue	Mitigation Measure	Responsibility	Status of the Compliance
	<ul style="list-style-type: none"> There is invariably a safety risk when construction works such as excavation and earthmoving are conducted in populous areas. Workers need to be mindful of the occupational hazards, which can arise from working in height and excavation works. Potential impacts are negative and long-term but reversible by mitigation measures. 	<p>2006 (amended in 2013) and all applicable laws and standards on workers' health and safety (H&S).</p> <ul style="list-style-type: none"> Ensure that all site personnel have a basic level of environmental awareness training. If necessary, the environmental management specialist and/or a translator shall be called to the sites to further explain aspects of environmental or social behavior that are unclear. Produce and implement a site H&S plan which include measures as: (i) excluding the public from worksites; (ii) ensuring all workers are provided with and required to use personal protective equipment (reflectorized vests, footwear, gloves, goggles and masks) at all times; (iii) providing H&S training for all site personnel; (iv) documenting procedures to be followed for all site activities; and (v) maintaining accident reports and records. 	SEIP is monitoring mitigation measures.	health safety and COVID-19 safety practice orientation to BITAC and BACI construction workers.
2.9	Traffic disruption BITAC site is on busy premises. Expected minor impact may rise from traffic movement (heavy vehicles) during construction works	<ul style="list-style-type: none"> Warning lights should be set up along the construction road sections, guiding the access of vehicles. Follow the TMP stipulated in Appendix I of this IEE 	BITAC authority, CSC, EO and Contractor. EE-SEIP is monitoring mitigation measures.	The Contractor of BITAC has been taken mitigation measures like cautionary signboard, signs, security guards etc. Being followed TPM
3. Post Construction Phase				
3.1	Post-construction clean-up: Damage due to debris, spoils, excess construction materials.	<ul style="list-style-type: none"> Remove all spoils wreckage, rubbish, or temporary structures (such as buildings, shelters, and latrines) which are no longer required; 	BITAC authority, CSC, EO and Contractor. EE-SEIP will monitor conditions as stated in the IEE.	The Contractor will follow post construction conditions

Ref. No.	Impact/Issue	Mitigation Measure	Responsibility	Status of the Compliance
		<ul style="list-style-type: none"> All excavated roads shall be reinstated to original condition; All disrupted utilities restored; 		after completion of works.

Table 11: Compliance Status with Environmental Mitigation and Management Plan (EMP) for BACI

Ref. No.	Impact/Issue	Mitigation Measure	Responsibility	Compliance Status
1. Planning Phase				
1.1	Climate Enhancement Measures The BACI site is located on a low-lying area that has potential of flooding.	Follow Environmental Enhancement Measures stipulated in the IEE like as Rainwater harvesting, Solar lighting, Water management, Green building materials	BACI authority, Contractor, EE-SEIP is monitoring mitigation and enhancement measures.	The Project is ensuring the mitigation measures during construction phase.
2. Construction Phase				
2.1	Disturbances in Ecological setting. The construction/campsites are devoid of vegetation, birds or local fauna. No impact is expected during construction or operation.	<ul style="list-style-type: none"> The BACI site is barren and wetlands is nearby. It is possible to plant a few trees in the site during construction. Trees with small but long canopy should be preferred during plantation. About 20 plants can be planted in the site given the current design. 	BACI authority, CSC, Contractor. EE-SEIP is monitoring mitigation and enhancement measures.	The Project is ensuring the mitigation measures. Plantation of trees will be done after construction phase
2.2	Noise Impacts <ul style="list-style-type: none"> Temporary increase in noise level and vibrations may be caused by excavation equipment, and the transportation of equipment, materials, and people. Noise Impact on construction workers The impacts are negative but short-term, site-specific within a relatively small area and reversible by mitigation measures. 	<ul style="list-style-type: none"> BACI site is not populated and traffic is absent. Therefore, noise impacts are expected to be restricted within the site workers. Utilize modern vehicles and machinery with the requisite adaptations to limit noise and exhaust emissions, and ensure that these are maintained to manufacturers' specifications at all times. All vehicles and equipment used in construction shall be fitted with exhaust silencers. Use silent-type generators (if required). 	BACI authority, CSC, Contractor. EE-SEIP is monitoring mitigation and enhancement measures.	The Project is ensuring the mitigation measures during construction phase
2.3	Water Pollution Excavation, run-off from stockpiled materials, and chemical contamination from fuels and lubricants may	<ul style="list-style-type: none"> There are waterbodies near to the site. Water pollution may occur in this water bodies. See the general Waste Management Plan at Appendix II. 	BACI authority, CSC, Contractor. EE-SEIP is monitoring mitigation and	The Project is ensuring the mitigation measures during construction phase

Ref. No.	Impact/Issue	Mitigation Measure	Responsibility	Compliance Status
	result to silt-laden runoff during rainfall, which may cause siltation and reduction in the quality of adjacent bodies of water	<ul style="list-style-type: none"> Awareness must be raised among workers on solid waste management. Specific dumping containers are to be kept in the site. All waste materials should be disposed in proper places after completion of construction. 	enhancement measures.	
2.4	Air Quality: <ul style="list-style-type: none"> Conducting works at dry season and moving large quantity of materials may create dusts and increase in concentration of vehicle-related pollutants (such as carbon monoxide, sulphur oxides, particulate matter, nitrous oxides, and hydrocarbons) which will affect people who live and work near the sites. The impacts are negative but short-term, site-specific within a relatively small area and reversible by mitigation measures. 	<ul style="list-style-type: none"> The sand and other such dispersible material must be removed after completion of work. Provide dust-proof measures like construction barrier at concrete mixing station, or mix concrete inside building to effectively control dust pollution. Water in due time the construction site on non-rainy days, including the road section in construction and major transportation road. Watering frequency shall be determined by the site supervision personnel according to the actual situation. 	BACI authority, CSC, Contractor. EE-SEIP is monitoring mitigation and enhancement measures.	The Project is ensuring the mitigation measures during construction phase
2.5	Community Health and Safety: <ul style="list-style-type: none"> Exposure to physical hazards from use of heavy equipment and cranes; trip and fall hazards; Construction works will impede the access of residents and businesses in limited cases. The impacts are negative but short-term, site-specific within a relatively small area and reversible by mitigation measures. 	<ul style="list-style-type: none"> Contractor's activities and movement of staff will be restricted to designated construction areas. Use small mechanical excavators to attain faster excavation progress. For rock and concrete breaking, use non-explosive blasting chemicals, silent rock cracking chemicals, and concrete breaking chemicals. Under no circumstances may open areas or the surrounding bushes be used as a toilet facility. Create traffic regulation and diversion zones during construction work. The proposed site is on the main road, and it is expected that 	BACI authority, CSC, Contractor. EE-SEIP is monitoring mitigation and enhancement measures.	BACI is located in a newly developed area at Uttara 3 rd phase where traffic movement is most insignificant. However, due precautionary measures will be taken for traffic, pedestrian and worker's safer movements.

Ref. No.	Impact/Issue	Mitigation Measure	Responsibility	Compliance Status
		heavy vehicle movements can cause traffic nuisance. Therefore, traffic regulation and diversion will be important to avoid traffic nuisance		
2.6	Climate extremities due to geographic location BACI site is located in a flood vulnerable zone. Therefore, climate extreme events should be considered during construction	<ul style="list-style-type: none"> Plinth height should be considered using flood level analysis Painting should be weatherproof and building design should consider ample space for accommodate more people during flood and storm event. 	BACI authority, CSC, Contractor. EE-SEIP is monitoring mitigation and enhancement measures.	The Project will ensure the required mitigation measures.
2.7	Waste generation <ul style="list-style-type: none"> The site is expected to generate construction waste. Without proper management, this will pollute soil, water and air and spread public nuisance 	<ul style="list-style-type: none"> Awareness must be raised among workers on solid waste management. Specific dumping containers are to be kept in the site. All waste materials should be disposed in proper places after completion of construction Update the 'Waste Management Plan and get approval from site supervising engineer and environmental officer. Conduct separate waste collection and promote recycling and reuse. Appropriate disposal of non-recyclable waste according to rules Hazardous waste should be treated under the related regulation 	BACI authority, CSC, Contractor. EE-SEIP is monitoring mitigation and enhancement measures.	The Project is ensuring the mitigation measures.
2.8	Worker's health and safety: <ul style="list-style-type: none"> There is invariably a safety risk when construction works such as excavation and earthmoving are conducted in populous areas. Workers need to be mindful of the occupational hazards, which can arise from working in height and excavation works. Potential impacts are negative and long-term but 	<ul style="list-style-type: none"> Comply with requirements of Government of Bangladesh Labour Law of 2006 (amended in 2013) and all applicable laws and standards on workers' health and safety (H&S). Ensure that all site personnel have a basic level of environmental awareness training. If necessary, the environmental management specialist and/or a translator shall be called to the sites to further explain aspects of environmental or social behavior that are unclear. Produce and implement a site H&S plan which include 	BACI authority, CSC, Contractor. EE-SEIP has provided Health Safety and COVID-19 safety practice orientation.	The Project is ensuring the required health safety and enhancement measures.

Ref. No.	Impact/Issue	Mitigation Measure	Responsibility	Compliance Status
	reversible by mitigation measures.	measures as: (i) excluding the public from worksites; (ii) ensuring all workers are provided with and required to use personal protective equipment (reflectorized vests, footwear, gloves, goggles and masks) at all times; (iii) providing H&S training for all site personnel; (iv) documenting procedures to be followed for all site activities; and (v) maintaining accident reports and records.		
3. Post Construction Phase				
3.1	Post-construction clean-up: Damage due to debris, spoils, excess construction materials.	<ul style="list-style-type: none"> Remove all spoils wreckage, rubbish, or temporary structures (such as buildings, shelters, and latrines) which are no longer required; All excavated roads shall be reinstated to original condition; All disrupted utilities restored; 	BACI authority, CSC, Contractor. EE-SEIP will monitor the agreed conditions of the Contractor.	The Project will ensure the conditions after completion of construction of BACI site.

3.2 Strategy for COVID-19 Pandemic and H&S Guideline

Constructions firms were asked to submit the detail plan for COVID-19 pandemic and health & safety measures during the construction work. Each construction firm (both BITAC & BACI packages) submitted the COVID-19 management plans which were included in the contract documents. The main issues were focused on providing the hand hygiene facilities, practice respiratory hygiene & keep physical distancing for sites and residence. An orientation session on occupational health safety and COVID-19 safety practices have been provided in BITAC site including participants from BACI in Dhaka on 10 June 2021. There were 25 participants in the mentioned orientation. The orientation was based on use of PPE and interim safety guidelines on COVID-19 published by ADB. Also instructed to the Contractors and participants to follow strictly the COVID-19 plans submitted by the Contractors to the authority.



The safety plan on COVID-19 prepared by respective contractor which has to be followed by the construction workers at sites are being attached as Annex 3.

Table 12: COVID Response Performance at Work Site
(PC: Partially Complied; FC: Fully Complied)

COVID-19 Response questions	BITAC	BACI	Comments
Locate the closest medical establishment equipped with COVID -19 response facilities.	Holy Family Hospital, BSMMU	Lubna General Hospital	Within half an hour travel time distance
Engage a full time EHS professional at site	FC	FC	
Purchase thermometer gun, soap, hand sanitizer, disinfectants and PPEs (mask, hand gloves, hard shoes etc.) and keep it at worksite office.	FC	FC	
Establish site entrance protocol. Redesign the site safety notices/signboards/protocol according to the ADB guidelines	FC	FC	
Arrange washbasin, soap and clean water at the entrance of every worksite/campsite. Also keep either a disinfectant tub for shoes or keep disinfectant spray that must be sprayed under the boots/hard shoes of the persons entering worksite.	PC	PC	Disinfectant tub for shoes is absent, but shoes and other common tools are sprayed regularly by sanitizer.
Provide every personnel working in the site with mask, hand gloves and hard shoes for their personal use.	FC	FC	
Everyone entering the worksite must wear a mask, gloves and hard shoes	FC	FC	Sometime workers are unwilling to wear Boot and Helmet during hot day but it is always ensured the safeties.
Daily worksite protocol			
A designated EHS and medical person should stay all time during work. The EHS/Medical person should also monitor campsite. He/she will be in charge of ensuring physical distances (minimum 1m) among workers, disinfecting surfaces that are commonly used and investigate workers/site personnel health and safety.	FC	FC	Environmental Officer is fully engaged for ensure COVID-19 and other occupational Health Safety issues.
At the start and end of the day disinfect the total worksite.	PC	PC	
Encourage site personnel/camp dwellers to not touch their eyes, mouth or nose if not washed thoroughly with soap recently. Also discourage hand shaking or hugs.	PC	PC	At the starting of the day, instructions on all the safety messages including COVID-19 guidelines are given and strictly monitor to follow all the days in the site.
Arrange a mandatory site brief on COVID awareness in the morning. The session must be conducted by the EHS/medical professional.	FC	FC	At the starting of the day, instructions on all the safety messages including COVID-19 guidelines are given and strictly monitor to follow all the days in the site.
While worksites are commonly well ventilated (if not make sure the work sites are well ventilated), ensure that the camp sites including the rooms designated for the camp dwellers are well ventilated and spacious.	PC	PC	Contractor has been instructed to re design the existing labour camp for well ventilation and spaces.

COVID-19 Response questions	BITAC	BACI	Comments
Before sharing common tools/machines at worksite, ensure to disinfect.	FC	FC	
Discourage site personnel to gather and gossip at any time, rather encourage physical distance while chatting/discussing.	PC	PC	Sometimes they sit together without keeping required social distances.
Restrict worksite personnel to go outside unnecessarily. Also restrict campsite personnel to go outside without any valid cause.	PC	PC	In the name of urgent issues some times they go outside the site for a short time but gradually frequency of going outside is decreasing.
If any person related at worksite/campsite fall victim to COVID-19 or being kept isolated for pre-caution, consider paid leave with no exception allowed.	No	No	No report
Train workers on how to properly put on, use/wear, and take off protective clothing and equipment. The on-site EHS/Medical person should be in-charge of these trainings. These trainings must maintain the WHO's social distancing protocol. Make these trainings mandatory at worksites. Provide 10-15 minutes of a workday for such 'training and encouragement' activities.	PC	PC	Environmental Expert of SEIP and Environmental Officer of Contractor provide on site training on PPE use, how it will keep clean, make disinfectant, wash hands for how long and times and when etc. in each week.

3.3 Compliance with Loan Covenants

The compliance with loan covenants with status are presented in the following table.

Table 13: Compliance Status of SEIP Tranche 3 with respect to Loan Covenants

SI No	Status of Loan Covenants	Status of Compliance
1	Environment The Borrower shall ensure, and cause each of the Project Implementing Agencies to ensure, that the preparation, design, construction, implementation, operation and decommissioning of the Project and all project facilities comply with (a) all applicable laws and regulations of the Borrower relating to environment, health and safety; (b) the Environmental Safeguards; (c) The EARF and (d) all measures and requirements set forth in the IEEs, the EMPs, and any corrective or preventative actions set forth in a Safeguards Monitoring Report.	The Project is ensuring (a) all applicable laws and regulations of the Borrower, relating to environment, health and safety, involuntary Resettlement and small ethnic communities; (b) the communities Safeguards; and (c) The EARF and (d) all measures and requirements set forth in the IEEs, the EMPs, and any corrective or preventative actions set forth in a Safeguards Monitoring Report.
2	Land Acquisition and Involuntary Resettlement The Borrower shall ensure, and cause each of the Project Implementing Agencies to ensure, that the Project does not have any involuntary resettlement impacts within the meaning of the	The proposed BITAC and BACI training centers under SEIP Tranche 3 are under construction stages at their existing training campus and new and govt. allocated land respectively. Hence, there is no issue of involuntary resettlement.

SI No	Status of Loan Covenants	Status of Compliance
	Safeguard Policy Statement. In the event that the Project does have any such impact, the Borrower shall take all steps required to ensure that the Project complies with the applicable laws and regulations of the Borrower, the Safeguard Policy Statement, the RF and any corrective or preventative actions set forth in a Safeguard Monitoring Report.	There are no threat of hampering resettlement of small ethnic community people risks, or agricultural land due to project activities and hence no such requirement for reinstating pathways, other local infrastructure, and agriculture land to at least their pre-project condition upon the completion of construction.
3	Small Ethnic Community Peoples The Borrower shall ensure, and cause each of the Project Implementing Agencies to ensure, that the preparation, design, construction, implementation and operation of the Project and all Project facilities comply with (a) all applicable laws and regulations of the Borrower relating to small ethnic community peoples; (b) the Small Ethnic Community Peoples Safeguards; (c) the SECPP and (d) all measures and requirements set forth in the SECPP, and any corrective or preventative actions set forth in a Safeguards Monitoring Report.	There is no intervention in this project which can hamper environment and possibility of dislocation of ethnic minority. As such no separate budget allocation and dedicated manpower is required to implement EARF, RF and SECPF.
4	Human and Financial Resources to Implement Safeguards Requirements The Borrower shall make available, or cause each of the Project Executing Agencies to make available, necessary budgetary and human resources to fully implement the EMPs and the SECPP.	Environmental Expert is already been appointed by SEIP to close monitoring of EMP implementation. Sufficient budget has been kept for implementing the EMPs and the SECPP.
5	Safeguards Related Provisions in Bidding Documents and Works Contracts The Borrower shall ensure, and cause each of the Project Implementing Agencies to ensure, that all bidding documents and contracts for Works contain provisions that require contractors to: <ul style="list-style-type: none"> (a) comply with the measures and requirements relevant to the contractor set forth in any safeguards documents (to the extent they concern impacts on affected people during construction), and any corrective or preventative actions set out in a Safeguards Monitoring Report; (b) make available a budget for all environmental and social measures; (c) provide the Borrower with a written notice of any unanticipated environmental, resettlement or small ethnic community peoples risks or impacts that arise during construction, implementation or operation of the Project that were not considered in the IEEs, the EMPs and SECPP; (d) adequately record the condition of roads, agricultural land and other infrastructure prior to starting to transport materials and construction; and (e) fully reinstate pathways, other local infrastructure, and agricultural land to at least 	<ul style="list-style-type: none"> (a) All required provisions on Safeguard related issues, as specified in EMPs, were included in the bidding documents for BITAC and BACI construction work. (b) Sufficient budget has been allocated for the environmental and social measures (c) No issues noticed. (d) Record will be kept infrastructure prior to starting to transport materials and construction; and (e) Will be complied during the commence of civil works.

SI No	Status of Loan Covenants	Status of Compliance
	their pre-project condition upon the completion of construction.	
6	Safeguards Monitoring and Reporting The Borrower shall do the following, or shall cause each of the Project Implementing Agencies to do the following: (a) submit semi-annual Safeguards Monitoring Reports to ADB and disclose relevant information from such reports to affected persons promptly upon submission; (b) if any unanticipated environmental and/or social risks and impacts arise during construction, implementation or operation of the Project, promptly inform ADB of the occurrence of such risks or impacts, with detailed description of the event and proposed corrective action plan; and (c) report any actual or potential breach of compliance with the measures and requirements set forth in the EMPs and the SECPP promptly after becoming aware of the breach.	(a) The semi-annual Safeguards Monitoring Reports from January to June 2021 submitted to ADB. (b) The civil works for constructing BACI and BITAC training centers are ongoing. Close monitoring of construction activities is ongoing. No accident has not been occurred as such no report has not been submitted to ADB. (c) No issues noticed.

IV. Conclusion and Recommendations

The outcome for Tranche 3 will be increased inclusive access to basic, mid-level, and advanced skills training in the priority sectors. Both BITAC and BACI training Centers are under construction at their own lands. As there is no issue of land acquisition resettlement, ethnic issue, historical heritage, ecological degradation, water pollution, inorganic discharge, so the environmental adverse impacts will be very transitory, local and work based. Occupational Health Safety is a major issue in both sites. Moreover, Pandemic COVID-19 has created a new trauma in every sectors. An orientation has provided to both sites but need to provide some time formal and sometime informal orientation to the construction labors. Because, construction labors frequently leave their work place without prior notice and the Contractor again recruit new labors which have no COVID-19 or occupational health safety knowledge. Contractor must follow the Health Safety Plan submitted by themselves and all the safety and health issues will be close monitored by Environmental Expert, Civil Engineer of SEIP and Environmental Health Officer of the respective Contractor. During operation phase, there are possibilities of environmental hazards if not solid waste, wastewater, fire safety, safe drinking water, faecal sludge management, sewage water not dispose hygienically.

BITAC and BACI must follow IEEs prepared for both sites and must follow EMP as stated during operational phases. The EMPs, SECPP and GAP documents were included in both bidding documents and contract documents.

SDCMU is also taking care of the issues relating to the IEE and EMP, RF and any other corrective or preventative actions set forth in Environmental Monitoring Report during implementation of civil works.

ANNEX I: Photographs from Site



Figure 1: BITAC Site and Ongoing Construction Works



Figure 2: Pile Stack at BACI Site



Figure 3: Cautionary Signs for Pedestrian and Traffic Control



Figure 4 and 5: PPE are Used by Workers and Surface Drain Constructed at BITAC Site