

Semi-annual Environmental Monitoring Report

**Project No. 42466-017
December 2020**

**Skills for Employment Investment Program (SEIP)
Tranche 3**

This Semi-annual Environmental Monitoring Report is a document of the borrower. The views expressed herein do not necessarily represent those of ADB's Board of Directors, Management, or staff, and may be preliminary in nature.

In preparing any country program or strategy, financing any project, or by making any designation of or reference to a particular territory or geographic area in this document, the Asian Development Bank does not intend to make any judgments as to the legal or other status of any territory or area.

Semi-annual Environmental Monitoring Report

Project No. 42466-017
December 2020

Skills for Employment Investment Program (SEIP)

Tranche 3

Prepared by Skills Development Coordination and Monitoring Unit (SDCMU), Skills for Employment Investment Program (SEIP) under Finance Division, Ministry of Finance and The Asian Development Bank

This Semi-annual Environmental Monitoring Report is a document of the borrower. The views expressed herein do not necessarily represent those of ADB's Board of Directors, Management, or staff, and may be preliminary in nature.

In preparing any country program or strategy, financing any project, or by making any designation of or reference to a particular territory or geographic area in this document, the Asian Development Bank does not intend to make any judgments as to the legal or other status of any territory or area

List of Acronyms

1. BACI= Bangladesh Association of Construction Industry
2. BITAC= Bangladesh Industrial Technical Assistance Center
3. BMET= Bureau of Manpower, Employment and Training
4. CBLM= Competency-Based Learning Material
5. CS= Competency Standard
6. EARF= Environmental Assessment and Review Framework
7. EMP= Environmental Management Plan
8. IEE= Initial Environmental Examination
9. KOICA= Korea International Cooperation Agency
10. MoU= Memorandum of Understanding
11. NHRDF= National Human Resource Development Fund
12. NSDC= National Skills Development Council
13. NSDP= National Skills Development Policy
14. PKSf= Palli Karma-Sahayak Foundation
15. RF=Resettlement Framework
16. SWAp= Sector Wide Approach
17. SEIP= Skills for Employment Investment Program
18. SECPF= Small Ethnic Communities Planning Framework
19. SECPP= Small Ethnic Communities Peoples Plan
20. SPS= Safeguard Policy Statement
21. TMS= Training Management System
22. TTC= Technical Training Center
23. TVET= Technical and Vocational Education and Training

Table of Contents

LIST OF ACRONYMS	2
TABLE OF CONTENTS	3
EXECUTIVE SUMMARY:	4
I. INTRODUCTION:	5
II. ENVIRONMENTAL MONITORING:	11
III- ENVIRONMENTAL MANAGEMENT	12
CONCLUSION AND RECOMMENDATION	22
ANNEX-1: SITE PICTURES	23

Executive Summary

Under Tranche 3, SEIP supports the construction of two training facilities to the Bangladesh Industrial Technical Assistance Centre (BITAC) at Tejgaon, Dhaka and Bangladesh Association of Construction Industry (BACI) at Uttara, Dhaka. The initial environmental examination (IEE) report, along with environmental management plan (EMP) has been prepared and disclosed in June 2019.

The project Tranche-3, has been categorized as B for environment under the ADB's SPS and expected to have limited and minimum adverse environmental impact. According ECR-1997 of Bangladesh, the construction of the training centers (BITAC and BACI) are listed in schedule-1 and categorized as Orange B. In line with the IEE, there is no threat of hampering resettlement of small ethnic community people, or agricultural land due to project.

The semi-annual report presents the status of project implementation, details of compliance with environmental regulations of the Government and policies of ADB, details of compliance with environmental loan covenants and the status of compliance with various aspects of EMPs. In this report the performance indicators of environmental works under the proposed civil works under tranche 3 have been summarized and presented.

In this reporting period, the contracts have been made with the construction companies and the EPMS along with IEE, SECPP & GAP were included in the contract document. The mobilization works have been started for both sites and the construction works will commence in January 2021.

The contractors provided the detail plan for COVID-19 pandemic with health & safety plan for each site. SDCMU will ensure the implementation of the COVID-19 plan during the construction phase.

MoU has been signed among SEIP, BITAC & Korea University of Technology and Education (KOREATECH) for developing BITAC as modern Training center. The detail proposal on course curriculum development, TO & HR(managers) training will be developed in the next quarter.

I. Introduction

1.1 Background

The Skills for Employment Investment Program (SEIP) will support the Government of Bangladesh's reforms in skills development articulated in the National Skills Development Policy (NSDP). It will catalyze the private sector to provide market responsive skills development and strengthen public training institutions to ensure skills development is responsive to identified industry skills needs and emerging labor market trends. Large-scale private sector involvement and public-private partnership is critical in reducing existing skills gap and enabling Bangladesh to move from the current "low-skill, low-wage equilibrium" to a higher skill, higher wage equilibrium. The investment program will assist the government to scale up skilling of new entrants and upskilling of existing workers to increase their productivity and income levels, which in turn will contribute to accelerating economic growth in priority sectors. The investment program builds on the government's ongoing efforts to strengthen the skills development ecosystem by establishing a unified funding mechanism and enhancing overall coordination of the fragmented skills development system.

1.2 Impact and Outcome

1. The impact will be increased income and productivity of the working population aged 15 and over, aligned with NSDP. The outcome will be increased employment in priority sectors and skills for males and females.

2. The outcome for Tranche 1 will be increased inclusive access to skills training in priority sectors. The outcome for Tranche 2 will be increased inclusive access to basic, mid-level, and managerial skills training in priority sectors. The outcome for Tranche 3 will be increased inclusive access to basic, mid-level, and advanced skills training in priority sectors.

1.3 Outputs

The SEIP will be delivered over three overlapping interrelated tranches and will include four outputs: (i) market responsive inclusive skills training delivered; (ii) quality assurance system strengthened; (iii) institutions strengthened; and (iv) monitoring and management for skills development strengthened.

1.4 Scope of the project

Tranche 3 will support the renovation and transformation of BITAC in Dhaka, which was originally established under the Ministry of Industries for the development of light engineering industry through training programs and consultancy services for small and medium businesses. BITAC training facilities will be renovated to offer higher-end job-ready training courses in precision engineering, mechatronics, and electrical technology. The renovated BITAC will also focus on R&D and innovation for the enhancement of industry performance and prototype product development, in close collaboration with industries. The new BITAC building will set up an Industry Cooperation Center to support the upskilling of industry personnel and to foster close collaborations with the industry. In addition, Tranche 3 will support the construction of training facilities for BACI to expand the training capacity in the construction sector.

1.5 Environmental Safeguards Category

Tranche 3 will support the renovation of BITAC training facilities and the new construction of BACI training facilities for construction skills training. Hence, Tranche 3 is classified as

Environment Category B and expected to have limited and minimum adverse environmental impacts. Initial environment assessments have been carried out for the two sites of BITAC and BACI facilities, and environment management plans have been prepared in accordance with the environmental assessment review framework. Any potential environment impacts during construction are considered manageable as outlined in the environment management plan.

1.6 Physical progress of civil works

The new BITAC building will be constructed in the BITAC premises at Tejgaon, Dhaka and a new training facilities for BACI at Uttara, Dhaka. The list of expected civil works contracts and estimated time for advertisements is below:

Table 1: Civil works under Tranche 3 of SEIP.

Contract No. and Name	Amount (\$ million)	Current Status
WD-01: Renovation of BITAC Training Center (NCB)	7.50	Contract was made on 24 December 2020. Mobilization work is ongoing and the construction work will commence in January 2021.
WD-02: Renovation of BACI Training Center (NCB)	3.00	Contract was made on 16 November 2020. Mobilization work is ongoing and the construction work will commence in January 2021.

1.7 Scope of the report & Reporting period

The scope of this monitoring report is specific to the project for the construction of BITAC training center and BACI training center. This report will cover the evaluation of effect of the mitigation measures described in the environmental management plan for the proposed constructions and renovation of training facilities by the Bangladesh Industrial Technical Assistance Centre (BITAC) at Tejgaon, Dhaka and Bangladesh Association of Construction Industry (BACI) at Uttara, Dhaka. **The reporting period is July to December 2020.**

1.8 Purpose of monitoring reports

The Semi Annual Environmental Monitoring Report(EMR) presents the status of project implementation, details of compliance with environmental regulations of the Government and policies of ADB, details of compliance with environmental loan covenants, details of complaints received and their redressal and the status of compliance with various aspects of EMP as stated in the IEE reports. In this report, the performance indicators of environmental works under the proposed civil works of tranche 3 has been summarized and analysed to measure the monitoring parameters. This semi-annual environmental monitoring report consists of three main parts: an introduction section, Environmental monitoring, Environmental management and conclusion.

1.9 Package and sub-project wise progress status

SEIP Tranche 3 has been started from January 2020 consisting of four outputs. The detail of the activities along with progress are provided below:

Output-1: Market responsive inclusive skills training delivered

The SEIP aims to improve job skills of new entrants and the existing workforce in priority economic sectors identified by the government, in order to ensure required skills are available according to industry standards. The priority sectors targeted by SEIP under Tranche 1 are: (i) readymade garment and textile, (ii) construction, (iii) information technology (IT), (iv) light engineering and manufacturing, (v) leather and footwear, and (vi) shipbuilding. Three additional sectors are supported in Tranche 2: (i) agro-processing, (ii) tourism and hospitality, and (iii) nursing and caregiving. For Tranche 3, the renewable energy sector has been chosen for skills training which is under process. The process of developing and approval of business plans for the implementing partners are ongoing and most of the Business plans have been finalized. The training under Tranche-3 will resume gradually once the COVID-19 situation improves.

Output-2: Strengthening of Quality Assurance System

Tranche 3 will continue to support training of trainers, industry assessors and principals/managers from public and private training providers. The formation of master trainers will continue through a series of training programs, and master trainers will be engaged to deliver the training of trainers (TOT) programs. To further upskill the knowledge and domain skills of trainers, especially for advanced skills programs, trade-specific intense overseas training programs will be implemented for selected trade areas. MoU has been signed among SEIP, BITAC & Korea University of Technology and Education (KOREATECH) for developing BITAC as modern Training center. The detail proposal will be developed in the next quarter on Course curriculum, TOT & HR (Managers) development plan.

Output-3: Strengthening of Institutions

- The Detail Engineering design and Drawings for the proposed BITAC training center with bidding documents also was finalized with prior reviewed by ADB. The bid was floated on 28th June 2020 and the Contract was made on 24 December 2020. Mobilization work is ongoing and construction work will commence in January 2021.
- For BACI package, contract was made on 16 November 2020. The contractor has started to mobilize the workforce along with site cleaning work and the construction work will commence in January 2021.

Output-4: Monitoring and management for skills development strengthened

Tranche 3 will support SDCMU to roll out an online financial management system (FinMan) and to implement comprehensive financial management capacity building programs that include (i) orientation workshops on FM manual and other financial management requirements under SEIP training; (ii) follow-up capacity building at the field level to provide hands-on support to financial management personnel; and (iii) continuous follow-up and

support to carry out all FM requirements under SEIP. The implementation of the above activities are in under process.

1.11 Document preparation for IEE/EIA

The IEE for the project of Skills for Employment Investment Program Tranche 3 for Construction of two new training centers was prepared and disclosed in June 2019. The SEIP tranche-3 project has been classified as Category B as per the ADB Environmental Policy.

1.12 Status on relevant GOB permits

The Status for taking initiatives for approval is as below.

SL	Permits	BITAC Site	BACI Site
1	NOC form Civil aviation Authority	Received	Received
2	NOC from Fire Service & Civil Defense Authority	Received	Received
3	NOC from DoE	Submission for approval	N/A
4	NOC from RAJUK	N/A (not required for government land)	Received

1.13 Summary Qualitative and quantitative monitoring data.

The construction works of BITAC and BACI training centers will commence in January 2021 and no construction work done in this reporting period. So no qualitative and quantitative data were collected.

1.14 Monitoring parameters/Indicators and methods

The mobilization works the construction of BITAC and BACI training centres are ongoing and the actual construction work will be started in January 2021. The following parameters will be monitored in line with the IEE.

Table 2 Environmental Monitoring Parameters & Methods:

No	Environmental Issues /Parameters	Monitoring Method		
		Method	Location	Duration / Frequency
1. Pre-Construction Phase				
1.1	Tree plantation	Visual inspection	In the site	During the pre-construction period
2. Construction Phase				
2.1	Topography and Landscape Changes	Inspection	In the work site	Construction stage/ Weekly inspection
2.2	Air Quality	Visual inspection is suggested since no sensitive areas nearby	In the work site	Daily
2.3	Wastes and drainage congestion	Record of kinds and quantity of waste, and the disposal method	In the work site and Workers camp	Daily
2.4	Disturbance to Existing Social	Record of numbers	Project site	Continuous

	Infrastructure and Services	construction vehicles		Record
2.5	Infectious Diseases such as HIV/AIDS	Labor health record	Related institutions	Twice a year
2.6	Work condition (including work safety)	Record of accidents	Contractor's office	Continuous Record
2.7	Accidents	Record of accidents	Contractor's office	Continuous Record
2.8	Disturbance to Community traffic and installation of proper road signage	Records of road signage implemented, visual inspection	Along the approach road	Continuous record
3. Operation Phase				
3.1	Accidents	Record of accidents and fire	Along the road	Continuous Record

1.15 Implementation arrangements

Project management comprises four levels. At the highest level, the executing agency is the Finance Division headed by a Secretary under the Ministry of Finance (MOF). The project steering committee (PSC) chaired by the secretary of the Finance Division includes selected members from the Executive Committee of the NSDA, national project director, and other representatives from key ministries and institutions, with the executive project director (EPD) of SEIP as the member-secretary.

At the second level a project implementation unit is headed by the national project director. The national project director provides policy advice, review funding, and release funds for SEIP.

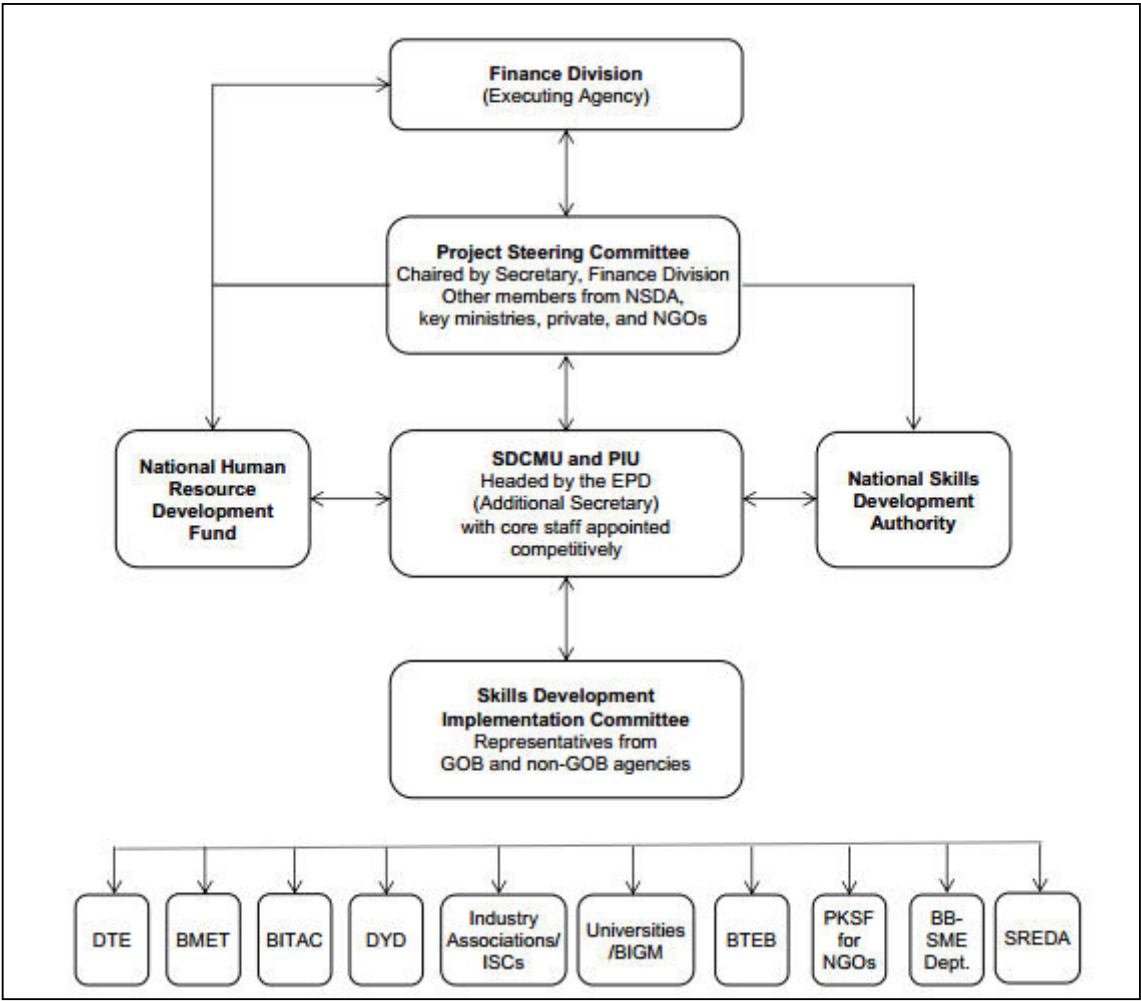
At the third level is the Skills Development Coordination and Monitoring Unit (SDCMU) headed by the EPD, which will serve as the program management unit. All the staff of the SDCMU are recruited competitively with required expertise and experience. The SDCMU is responsible for facilitating, coordinating, and monitoring the implementation of SEIP.

At the fourth level, the Skills Development Implementation Committee (SDIC) headed by the EPD with representatives from all the partner agencies will provide a common forum to discuss implementation issues and to make joint efforts to resolve problems emanating from implementation. If problems cannot be resolved at this level, these will be escalated to the PSC level for resolution.

In SDCMU level, DEPD(Public) is the focal person for monitoring and reporting the safeguard related components. With the assistance of Environmental Specialist, Construction firms will implement the EMPs. In addition, the construction supervision consultant will supervise the EMPs activities in close consultation with SDCMU.

The flow charts show the reporting lines' essential internal structures of key organizations

Involved in implementation.



II. Environmental Monitoring

2.1 Status IEE SEMP:

The physical works will commence in January 2021 and the IEE for site specific environmental management plan (SEMP) will be prepared during that time.

2.2 Monitoring parameters:

The status of the monitoring parameters are stated below. The table has been compiled from IEE report under SEIP tranche 3.

Table 3: Environmental Monitoring status

No	Environm ental Issues	Significant Impact	Monitoring Method			Responsibility		Status
			Methods	Location	Duration and Frequency	Impleme ntation	Supervision	Progress/ Status
1. Pre- Construction Phase								
1.	Tree plantation	Tree felling (5 matures, couple of samplings /ornamental trees) are expected at BITAC site. However, space is congested and there is no scope of replantation at the site. However, there is scope of plantation at BACI site. Tree planation at this site will improve the site's environmental significance as the site has been sand filled by Rajuk for development which was a precious wetland.	Visual inspection	In the site	During the pre-constructi on period	Contrac tor	BACI, construction Supervision consultant	The top soil is to be removed upto 6m deep and there is no scope of tree plantation. It is planned for tree plantation at the end of construction work.

III- Environmental management

3.1 Compliance with Environmental Mitigation and Management Plan (EMP).

The compliance status for the Environmental Mitigation and Management Plan is given below:

Table-4: Compliance with Environmental Mitigation and Management Plan (EMP) for BITAC

Ref. No.	Impact/Issue	Mitigation Measure	Responsibility	Status of the compliance
1. Demolition Phase				
0.1	Planning of demolition It is expected that manual demolition work will take place. If demolition is not planned properly, can create nuisance with deadly hazards. Absence of proper safety cautions, debris disposal and spoils managements plan etc can create havoc local environmental and even can cause death to demolition workers. Given the BITAC hostel to be demolished is single storied, thus risk is relatively low.	Develop a decommissioning plan for the proposed site including risk assessment and management plan for debris disposal, worker safety, solid waste management plan before construction starts. This is the contractor's responsibility and needs to be supervised by the Construction Supervision Engineer and EHS Consultant.	BITAC authority and contractor	No demolition work in this reporting period.
2. Construction Phase				
2.1A	Obtain ECC from DoE;	Submission for ECC to DoE	BITAC	Complied
2.1	Top soil loss followed by soil erosion <ul style="list-style-type: none"> Significant excavation, cut and fill is expected. 11 story building will also need concrete mixing, although the extent of time may not exceed couple of weeks. The proposed sites are on relatively flat land. BITAC site is on enclosed built-up area. The impacts are negative but short/medium term, site- 	<ul style="list-style-type: none"> Utilize readily available sources of materials. If contractor procures materials from existing burrow pits and quarries, causing less cut and fill that leads to top soil loss. Borrow areas and quarries (If these are being opened up exclusively for the project) must comply with environmental requirements, as applicable. 	BITAC authority, CSC, EO and contractor	The Project will ensures the mitigation measures.

Ref. No.	Impact/Issue	Mitigation Measure	Responsibility	Status of the compliance
	specific within a relatively small area and reversible by mitigation measures.			
2.2	Noise Impacts <ul style="list-style-type: none"> - Construction noises may hamper every day educational activities of the students and teachers at BITAC site - Temporary increase in noise level and vibrations may be caused by excavation equipment, and the transportation of equipment, materials, and people. - Noise Impact on construction workers - The impacts are negative but short-term, site-specific within a relatively small area and reversible by mitigation measures. 	<ul style="list-style-type: none"> • If it is not practicable to reduce noise levels to or below noise exposure limits, the contractor must post warning signs in the noise hazard areas. Workers in a posted noise hazard area must wear hearing protection. • Utilize modern vehicles and machinery with the requisite adaptations to limit noise and exhaust emissions, and ensure that these are maintained to manufacturers' specifications at all times. • All vehicles and equipment used in construction shall be fitted with exhaust silencers. Use silent-type generators (if required). 	BITAC authority, CSC, EO and contractor	The Project will ensure the mitigation measures.
2.3	Water Pollution <p>Excavation, run-off from stockpiled materials, and chemical contamination from fuels and lubricants may result to silt-laden runoff during rainfall, which may cause siltation and reduction in the quality of adjacent bodies of water, especially at BACI site</p>	<ul style="list-style-type: none"> • BITAC site is well drained. The Contractor of the Project shall make simple processing to muddy water like filtering and sedimentation, and direct discharge is prohibited; the Owner shall strengthen construction management to perform civilized construction. • Follow the general Waste Management Plan 	BITAC authority, CSC, EO and contractor	The Project will ensure the mitigation measures.
2.5	Air Quality: <ul style="list-style-type: none"> • Conducting works at dry season and moving large quantity of materials may create dusts and increase in concentration of vehicle-related pollutants (such as carbon monoxide, sulphur oxides, particulate matter, nitrous oxides, and hydrocarbons) which will affect people who live and work near the sites. • The impacts are negative but short-term, site-specific within a relatively small 	<ul style="list-style-type: none"> • The proposed site at BITAC is within busy campus. Therefore, air pollution and public disturbance is expected from construction works and construction vehicles. Provide dust-proof measures like construction barrier at concrete mixing station, or mix concrete inside building to effectively control dust pollution. • Water in due time the construction site on non-rainy days, including the road section in construction and major transportation road. • Watering frequency shall be determined by the site 	BITAC authority, CSC, EO and contractor	The Project will ensure the mitigation measures.

Ref. No.	Impact/Issue	Mitigation Measure	Responsibility	Status of the compliance
	area and reversible by mitigation measures.	supervision personnel according to the actual situation.		
2.6	Community Health and Safety: <ul style="list-style-type: none"> Exposure to physical hazards from use of heavy equipment and cranes; trip and fall hazards; Construction works will impede the access of residents and businesses in limited cases. The impacts are negative but short-term, site-specific within a relatively small area and reversible by mitigation measures. 	<ul style="list-style-type: none"> Contractor's activities and movement of staff will be restricted to designated construction areas. Use small mechanical excavators to attain faster excavation progress. For rock and concrete breaking, use non-explosive blasting chemicals, silent rock cracking chemicals, and concrete breaking chemicals. Under no circumstances may open areas or the surrounding bushes be used as a toilet facility. Create traffic regulation and diversion zones during construction work. The proposed site is on the main road, and it is expected that heavy vehicle movements can cause traffic nuisance. Therefore, traffic regulation and diversion will be important to avoid traffic nuisance. A generic Traffic Management Plan (TMP) is attached with this IEE as Error! Reference source not found. 	BITAC authority, CSC, EO and contractor	The Project will ensures the mitigation measures.
2.7	Waste generation <ul style="list-style-type: none"> The site is expected to generate construction waste. Without proper management, this will pollute soil, water and air and spread public nuisance 	<ul style="list-style-type: none"> Update the 'Waste Management Plan and get approval from site supervising engineer and environmental officer. Conduct separate waste collection and promote recycling and reuse. Appropriate disposal of non-recyclable waste according to rules Hazardous waste should be treated under the related regulation 	BITAC authority, CSC, EO and contractor	The Project will ensures the mitigation measures.
2.8	Worker's health and safety: <ul style="list-style-type: none"> There is invariably a safety risk when construction works such as excavation and earthmoving are conducted in populous areas. Workers need to be mindful of the occupational hazards, which can arise 	<ul style="list-style-type: none"> Comply with requirements of Government of Bangladesh Labour Law of 2006 (amended in 2013) and all applicable laws and standards on workers' health and safety (H&S). Ensure that all site personnel have a basic level of environmental awareness training. If necessary, the 	BITAC authority, CSC, EO and contractor	The Project will ensures the mitigation measures.

Ref. No.	Impact/Issue	Mitigation Measure	Responsibility	Status of the compliance
	<p>from working in height and excavation works.</p> <ul style="list-style-type: none"> Potential impacts are negative and long-term but reversible by mitigation measures. 	<p>environmental management specialist and/or a translator shall be called to the sites to further explain aspects of environmental or social behavior that are unclear.</p> <ul style="list-style-type: none"> Produce and implement a site H&S plan which include measures as: (i) excluding the public from worksites; (ii) ensuring all workers are provided with and required to use personal protective equipment (reflectorized vests, footwear, gloves, goggles and masks) at all times; (iii) providing H&S training for all site personnel; (iv) documenting procedures to be followed for all site activities; and (v) maintaining accident reports and records. 		
2.9	<p>Traffic disruption</p> <p>BITAC siteis on busy premises. Expected minor impact may rise from traffic movement (heavy vehicles) during construction works</p>	<ul style="list-style-type: none"> Warning lights should be set up along the construction road sections, guiding the access of vehicles. Follow the TMP stipulated in Appendix I of this IEE 	BITAC authority, CSC, EO and contractor	The Project will ensures the mitigation measures.
3. Post Construction Phase				
3.1	<p>Post-construction clean-up:</p> <p>Damage due to debris, spoils, excess construction materials.</p>	<ul style="list-style-type: none"> Remove all spoils wreckage, rubbish, or temporary structures (such as buildings, shelters, and latrines) which are no longer required; All excavated roads shall be reinstated to original condition; All disrupted utilities restored; 	BITAC authority, CSC, EO and contractor	The Project will ensures the mitigation measures.

Table-5: Compliance status with Environmental Mitigation and Management Plan (EMP) for BACI

Ref. No.	Impact/Issue	Mitigation Measure	Responsibility	Compliance status
1. Planning Phase				
1.1	Climate Enhancement	Follow Environmental Enhancement Measures stipulated in the IEE like as	BACI authority	The Project will ensures

Ref. No.	Impact/Issue	Mitigation Measure	Responsibility	Compliance status
	Measures The BACI site is located on a low lying area that has potential of flooding.	Rain water harvesting, Solar lighting, Water management, Green building materials		the mitigation measures.
2. Construction Phase				
2.1	Disturbances in Ecological setting The construction/campsites are devoid of vegetation, birds or local fauna. No impact is expected during construction or operation.	<ul style="list-style-type: none"> The BACI site is barren and wetlands is nearby. It is possible to plant a few trees in the site during construction. Trees with small but long canopy should be preferred during plantation. About 20 plants can be planted in the site given the current design. 	BACI authority, CSC, EO and contractor	The Project will ensure the mitigation measures.
2.2	Noise Impacts <ul style="list-style-type: none"> Temporary increase in noise level and vibrations may be caused by excavation equipment, and the transportation of equipment, materials, and people. Noise Impact on construction workers The impacts are negative but short-term, site-specific within a relatively small area and reversible by mitigation measures. 	<ul style="list-style-type: none"> BACI site is not populated and traffic is absent. Therefore, noise impacts are expected to be restricted within the site workers. Utilize modern vehicles and machinery with the requisite adaptations to limit noise and exhaust emissions, and ensure that these are maintained to manufacturers' specifications at all times. All vehicles and equipment used in construction shall be fitted with exhaust silencers. Use silent-type generators (if required). 	BACI authority, CSC, EO and contractor	The Project will ensure the mitigation measures.
2.3	Water Pollution Excavation, run-off from stockpiled materials, and chemical contamination from fuels and lubricants may result to silt-laden runoff during rainfall, which may cause siltation and reduction in the quality of adjacent bodies of water	<ul style="list-style-type: none"> There are waterbodies near to the site. Water pollution may occur in this water bodies. See the general Waste Management Plan at Appendix II. Awareness must be raised among workers on solid waste management. Specific dumping containers are to be kept in the site. All waste materials should be disposed in proper places after completion of construction. 	BACI authority, CSC, EO and contractor	The Project will ensure the mitigation measures.
2.4	Air Quality: <ul style="list-style-type: none"> Conducting works at dry season and moving large quantity of materials may create dusts and increase in concentration of vehicle-related 	<ul style="list-style-type: none"> The sand and other such dispersible material must be removed after completion of work. Provide dust-proof measures like construction barrier at concrete mixing station, or mix concrete inside building to effectively control dust pollution. Water in due time the construction site on non-rainy days, including the 	BACI authority, CSC, EO and contractor	The Project will ensure the mitigation measures.

Ref. No.	Impact/Issue	Mitigation Measure	Responsibility	Compliance status
	<p>pollutants (such as carbon monoxide, sulphur oxides, particulate matter, nitrous oxides, and hydrocarbons) which will affect people who live and work near the sites.</p> <ul style="list-style-type: none"> The impacts are negative but short-term, site-specific within a relatively small area and reversible by mitigation measures. 	<p>road section in construction and major transportation road.</p> <ul style="list-style-type: none"> Watering frequency shall be determined by the site supervision personnel according to the actual situation. 		
2.5	<p>Community Health and Safety:</p> <ul style="list-style-type: none"> Exposure to physical hazards from use of heavy equipment and cranes; trip and fall hazards; Construction works will impede the access of residents and businesses in limited cases. The impacts are negative but short-term, site-specific within a relatively small area and reversible by mitigation measures. 	<ul style="list-style-type: none"> Contractor's activities and movement of staff will be restricted to designated construction areas. Use small mechanical excavators to attain faster excavation progress. For rock and concrete breaking, use non-explosive blasting chemicals, silent rock cracking chemicals, and concrete breaking chemicals. Under no circumstances may open areas or the surrounding bushes be used as a toilet facility. Create traffic regulation and diversion zones during construction work. The proposed site is on the main road, and it is expected that heavy vehicle movements can cause traffic nuisance. Therefore, traffic regulation and diversion will be important to avoid traffic nuisance 	BACI authority, CSC, EO and contractor	The Project will ensures the mitigation measures.
2.6	<p>Climate extremities due to geographic location</p> <p>BACI site is located in a flood vulnerable zone. Therefore, climate extreme events should be considered during construction</p>	<ul style="list-style-type: none"> Plinth height should be considered using flood level analysis Painting should be weatherproof and building design should consider ample space for accommodate more people during flood and storm event. 	BACI authority and contractor	The Project will ensures the mitigation measures.
2.7	<p>Waste generation</p> <ul style="list-style-type: none"> The site is expected to generate construction waste. Without proper management, this will pollute soil, water and air and spread public nuisance 	<ul style="list-style-type: none"> Awareness must be raised among workers on solid waste management. Specific dumping containers are to be kept in the site. All waste materials should be disposed in proper places after completion of construction Update the 'Waste Management Plan and get approval from site supervising engineer and 	BACI authority, CSC, EO and contractor	The Project will ensures the mitigation measures.

Ref. No.	Impact/Issue	Mitigation Measure	Responsibility	Compliance status
		environmental officer. • Conduct separate waste collection and promote recycling and reuse. • Appropriate disposal of non-recyclable waste according to rules • Hazardous waste should be treated under the related regulation		
2.8	Worker's health and safety: • There is invariably a safety risk when construction works such as excavation and earthmoving are conducted in populous areas. Workers need to be mindful of the occupational hazards, which can arise from working in height and excavation works. • Potential impacts are negative and long-term but reversible by mitigation measures.	• Comply with requirements of Government of Bangladesh Labour Law of 2006 (amended in 2013) and all applicable laws and standards on workers' health and safety (H&S). • Ensure that all site personnel have a basic level of environmental awareness training. If necessary, the environmental management specialist and/or a translator shall be called to the sites to further explain aspects of environmental or social behavior that are unclear. • Produce and implement a site H&S plan which include measures as: (i) excluding the public from worksites; (ii) ensuring all workers are provided with and required to use personal protective equipment (reflectorized vests, footwear, gloves, goggles and masks) at all times; (iii) providing H&S training for all site personnel; (iv) documenting procedures to be followed for all site activities; and (v) maintaining accident reports and records.	BACI authority, CSC, EO and contractor	The Project will ensures the mitigation measures.
3. Post Construction Phase				
3.1	Post-construction clean-up: Damage due to debris, spoils, excess construction materials.	• Remove all spoils wreckage, rubbish, or temporary structures (such as buildings, shelters, and latrines) which are no longer required; • All excavated roads shall be reinstated to original condition; • All disrupted utilities restored;	BACI authority, CSC, EO and contractor	The Project will ensures the mitigation measures.

3.2 Strategy for COVID-19 pandemic and H&S Guideline

Constructions firms were asked to submit the detail plan for COVID-19 pandemic and health & safety measures during the construction work. Each construction firm (both BITAC & BACI packages) submitted the COVID-19 management plans which were included in the contract documents. The main issues were focused on providing the hand hygiene facilities, practice respiratory hygiene & keep physical distancing for sites and residence. The detail plan is attached herewith.

3.3 Compliance with loan covenants

The compliance with loan covenants with status are presented in the following table.

Table -5: The compliance status of SEIP tranche 3 with respect to loan covenants is presented in table below:

SI No	Status of Loan Covenants	Status of Compliance
1	Environment The Borrower shall ensure, and cause each of the Project Implementing Agencies to ensure, that the preparation, design, construction, implementation, operation and decommissioning of the Project and all project facilities comply with (a) all applicable laws and regulations of the Borrower relating to environment, health and safety; (b) the Environmental Safeguards; (c) The EARF and (d) all measures and requirements set forth in the IEEs, the EMPs, and any corrective or preventative actions set forth in a Safeguards Monitoring Report.	The Project will ensures (a) all applicable laws and regulations of the Borrower, relating to environment, health and safety, involuntary Resettlement and small ethnic communities; (b) the communities Safeguards; and (c) The EARF and (d) all measures and requirements set forth in the IEEs, the EMPs, and any corrective or preventative actions set forth in a Safeguards Monitoring Report.
2	Land Acquisition and Involuntary Resettlement The Borrower shall ensure, and cause each of the Project Implementing Agencies to ensure, that the Project does not have any involuntary resettlement impacts within the meaning of the Safeguard Policy Statement. In the event that the Project does have any such impact, the Borrower shall take all steps required to ensure that the Project complies with the applicable laws and regulations of the Borrower, the Safeguard Policy Statement, the RF and any corrective or preventative actions set forth in a Safeguard Monitoring Report.	The proposed BITAC and BACI training centers under SEIP Tranche 3 will take place within their existing training campus or existing land. Hence, there is no issue of involuntary resettlement. There is no threat of hampering resettlement of small ethnic community people risks, or agricultural land due to project activities and hence no such requirement for reinstating pathways, other local infrastructure, and agriculture land to at least their pre-project condition upon the completion of construction.
3	Small Ethnic Community Peoples The Borrower shall ensure, and cause each of the Project Implementing Agencies to ensure, that the preparation, design, construction, implementation and operation of the Project and all Project facilities comply with (a) all applicable	There is no intervention in this project which can hamper environment and possibility of dislocation of ethnic minority. As such no separate budget allocation and dedicated manpower is

SI No	Status of Loan Covenants	Status of Compliance
	laws and regulations of the Borrower relating to small ethnic community peoples; (b) the Small Ethnic Community Peoples Safeguards; (c) the SECPP and (d) all measures and requirements set forth in the SECPP, and any corrective or preventative actions set forth in a Safeguards Monitoring Report.	required to implement EARF, RF and SECPF.
4	Human and Financial Resources to Implement Safeguards Requirements The Borrower shall make available, or cause each of the Project Executing Agencies to make available, necessary budgetary and human resources to fully implement the EMPs and the SECPP.	Environmental specialist will be engaged to close monitoring of EMP implementation. Sufficient budget will be kept for implementing the EMPs and the SECPP.
5	Safeguards Related Provisions in Bidding Documents and Works Contracts The Borrower shall ensure, and cause each of the Project Implementing Agencies to ensure, that all bidding documents and contracts for Works contain provisions that require contractors to: <p>(a) comply with the measures and requirements relevant to the contractor set forth in any safeguards documents (to the extent they concern impacts on affected people during construction), and any corrective or preventative actions set out in a Safeguards Monitoring Report;</p> <p>(b) make available a budget for all environmental and social measures;</p> <p>(c) provide the Borrower with a written notice of any unanticipated environmental, resettlement or small ethnic community peoples risks or impacts that arise during construction, implementation or operation of the Project that were not considered in the IEEs, the EMPs and SECPP;</p> <p>(d) adequately record the condition of roads, agricultural land and other infrastructure prior to starting to transport materials and construction; and</p> <p>(e) fully reinstate pathways, other local infrastructure, and agricultural land to at least their pre-project condition upon the completion of construction.</p>	<p>(a) All required provisions on Safeguard related issues, as specified by EMPs, were included in the bidding documents for BITAC and BACI construction work.</p> <p>(b) Sufficient budget has been allocated for the environmental and social measures</p> <p>(c) No issues noticed.</p> <p>(d) Record will be kept infrastructure prior to starting to transport materials and construction; and</p> <p>(e) Will be complied during the commence of civil works.</p>
6	Safeguards Monitoring and Reporting The Borrower shall do the following, or shall	

SI No	Status of Loan Covenants	Status of Compliance
	<p>cause each of the Project Implementing Agencies to do the following:</p> <p>(a) submit semi-annual Safeguards Monitoring Reports to ADB and disclose relevant information from such reports to affected persons promptly upon submission;</p> <p>(b) if any unanticipated environmental and/or social risks and impacts arise during construction, implementation or operation of the Project, promptly inform ADB of the occurrence of such risks or impacts, with detailed description of the event and proposed corrective action plan; and</p> <p>(c) report any actual or potential breach of compliance with the measures and requirements set forth in the EMPs and the SECPP promptly after becoming aware of the breach.</p>	<p>(a) The semi-annual Safeguards Monitoring Reports from July to December 2020 submitted to ADB</p> <p>(b) The civil works for constructing BACI and BITAC training centers are going to be started soon. Close monitoring of construction activities and submission of required reports will be done when upgrading works commence.</p> <p>(c) No issues noticed.</p>

Conclusion and Recommendation

The outcome for Tranche 3 will be increased inclusive access to basic, mid-level, and advanced skills training in the priority sectors. Both BACI and BITAC training center are to be constructed within their own land and expected to have limited and minimum adverse environmental impacts. Also, there is no threat of hampering resettlement of small ethnic community people, or agricultural land due to project. The preparatory activities for the civil works is ongoing and the actual construction work will commence in January 2021. The EMPs, SECPP and GAP documents were included in both bidding documents and contract documents. SDCMU will ensure all applicable laws and regulations, relating to environment, health and safety, involuntary resettlement and small ethnic communities' safeguards. SDCMU will also take care of the issues relating to the IEE and EMP, RF and any other corrective or preventative actions set forth in Environmental Monitoring Report during implementation of civil works.

Annex-1: Site pictures



Figure 1: Proposed site condition & its access road at the BITAC site



Figure 2: Existing condition at the BACI site and its access road

DELTA ENGINEERS & CONSORTIUM LTD. - EHA (JV)

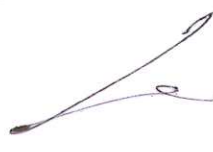
Address: 435-A/2, Chashi Kallayan Bhaban, Boro Moghbazar, Dhaka-1217

Subject: Detailed planning on site facilities including social safeguard, health facilities & COVID-19 issues for the implementation of the project: Construction of BACI Skill Development Institute.

Planning for site facilities:

- ☐ A **site office** to be made having following facilities included:
 - ☐ Room having attached toilet facilities for the personnels of BACI skill development Institute/Consultants having Project Profile Board, Office Furniture, Safety Helmet, Consumable Stationeries etc.
 - ☐ Room for the Project Manager & Project Engineer of the Contractor having Office Furniture, Safety Helmet, Consumable Stationeries etc.
 - ☐ Room for the Site Engineers & Site Manager of the Contractor having First aid box, Office Furniture, Safety Helmet, Consumable Stationeries etc.
- ☐ All other coconstruction related personnels like technician, welder, supervisor, driver & construction labour shall have their residence adjacent to the construction site. There will be available drinking water facility, higenic sanitation systems. Toilet to be provided both of male & female personnels separately, etc.
- ☐ **Social safeguard** will not be the major issues/problem for the implementation of above mentioned project, because the land of the project already taken over for this project from the Government pre planned area and is situated in an almost open field area. The project has vaccant land on its east, west & north side. On the south side of the project, a 60'-0" wide pacca road running and has no any traffic at all in this road. However important emphasis shall be taken on all the Social safeguard issues.
- ☐ **Health facilites** for the construction related personnels will be the important issues for the implementation of the aforesaid project. All the labour shall have primary health & safety knowledge measures at construction site..
- ☐ All the labours shall have training on their safety health issues & be acknowledged about all the points to be maintanened for their own safety like using helmet, safety belt where necessary, wearing construction jacket etc.
- ☐ The Contractor will be liable for supplying all kind of safety materials for all of his staff, construction labour etc.,
- ☐ The Contractor is comitted to ensure temporary construction boundary to all around the site, safety net specially to the road side to safe the road traffic & walkers on the front roads

Delta Engineers & Consortium Ltd.-EHA (JV)


Authorized Signatory

- The Contractor is committed to ensure first aid health facility of all the construction related personnel, available drinking water supplying facility at site.
- The Contractor's personnel along with all the construction related labours must be aware about communicable disease, non communicable diseases, injurious health problem at construction site and specially contractor's personnels will be instructed & informed from the Contractor management about their duty for handling such kind of unwanted situation if arises.
- All the construction related personnel including all labours specially informed & aware about communicable disease like **COVID-19 viruses**. They shall have the knowledge about COVID-19 virus, safety knowledge about attacking & prevention from this kind of virus etc.
- All the construction related personnel including all labours shall have the safety measures facility from **COVID-19** virus like sufficient hand washing point along with hand sanitizers, face mask facility from the Contractor's end etc.

Delta Engineers & Consortium Ltd.-EHA (JV)


Authorized Signatory

BITAC SITE

**Health and safety facilities regarding COVID-19
issue
(Attachment No. 7)**

SR *Q*



REF:

DATE:

Detailed planning on site facilities including social safe guard, health facilities for the implementation of the project: Construction of BITAC Training centre.

Planning for site facilities:

A site office to be made having following facilities included:

1. Room having attached toilet facilities for the personnel of BITAC, SEIP or Consultant having project profile Board, Office furniture, Safety Helmet, Consumable Stationaries etc.
2. Room for the project manager and Project Engineer of the Contractor having office furniture, Safety helmet, Consumable Stationaries etc.
3. Room for the Site Engineers & Site Manager of the Contractor having first aid box, Office furniture, Safety Helmet, Consumable Stationaries etc.
4. All other construction related personnel like technician, welder, supervisor, driver & construction labour shall have their residence adjacent to the construction site. There will be available drinking water facility, hygienic sanitation systems. Toilet to be provided both of male & female personnel separately.

Social Safeguard will not be the major issues/problems for the implementation of above mentioned project. Because the land of the project already taken over for this project from the Government pre planned area and is situated in an almost open field area.

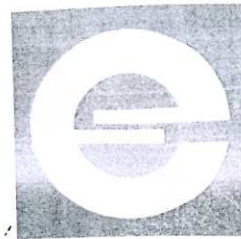
Health facilities for the construction personnel will be the important issues for the implementation of the aforesaid project. All the labour shall have primary health & safety knowledge measures at construction site.

All the labour shall have training on their safety health issues & be acknowledged about all the points to be maintain for their safety like using helmet, safety belt where necessary, wearing construction jacket etc.

The Contractor will be liable for supplying all kinds of safety materials for all of his staff, construction labour, etc.

The Contractor is committed to ensure temporary construction boundary to all around the site, safety net specially to the road side to safe the road traffic & walkers.

[Handwritten signature] *[Handwritten mark]*



REF:

DATE:

Detailed planning on COVID-19 issues for the implementation of the project: Construction of BITAC Training centre.

- Using Hand wash arrangement in site.
- Ensure for using facemask
- Keeping in-person meetings (including toolbox talks and safety meetings) as short as possible, limiting the number of workers in attendance, and using social distancing practices;
- Screening calls when scheduling indoor construction work to assess potential exposures and circumstances in the work environment before worker entry;
- Requesting that shared spaces in home environments where construction activities are being performed, or other construction areas in occupied buildings, have good air flow; and
- Staggering work schedules, such as alternating workdays or extra shifts, to reduce the total number of employees on a job site at any given time and to ensure physical distancing.