

# Draft Initial Environmental Examination

---

October 2013

## GEO: Urban Services Improvement Investment Program – Tranche 3 (Improvement of Kutaisi Water Supply System Sub-project)

Prepared by United Water Supply Company of Georgia LLC of the Ministry of Regional Development and Infrastructure for the Asian Development Bank.

This initial environmental examination is a document of the borrower. The views expressed herein do not necessarily represent those of ADB's Board of Directors, Management, or staff, and may be preliminary in nature. Your attention is directed to the "terms of use" section of this website.

In preparing any country program or strategy, financing any project, or by making any designation of or reference to a particular territory or geographic area in this document, the Asian Development Bank does not intend to make any judgments as to the legal or other status of any territory or area.



საქართველოს რეგიონული განვითარებისა და  
ინფრასტრუქტურის სამინისტრო  
MINISTRY OF REGIONAL DEVELOPMENT AND  
INFRASTRUCTURE OF GEORGIA

**\*050188601823013\***

KA050188601823013

საქართველო, თბილისი, 0160, ალ.კაზბეგის გამზ. 12; ტელ: (+995 32) 2510 611; ფაქსი: (+995 32) 2510 679

12, AL. Kazbegi ave. 0160 Tbilisi, Georgia; Tel: (+995 32) 2510 611; Fax: (+995 32) 2510 679

**№5187/გ**

**2013 / 10 /17**

**To: Mr. Sanjay Joshi  
Senior Urban Development Specialist  
Central and West Asia Department  
Asian Development Bank**

Subject: Initial Environmental Examinations for Ureki and Kutaisi WS Projects

Dear Mr. Joshi,

The Ministry of Regional Development and Infrastructure of Georgia, herewith, endorses draft Initial Environmental Examinations (IEEs) prepared for the Ureki Water Supply and Kutaisi Water Supply Projects, which are considered to be executed under Urban Services Improvement Investment Program.

Please find attached documents.

Sincerely Yours,

First Deputy Minister

Tengiz Shergelashvili

# Draft Initial Environmental Examination

---

October 2013

GEO: Urban Services Improvement Investment  
Program – Tranche 3  
(Improvement of Kutaisi Water Supply System  
Sub-project)

Prepared by United Water Supply Company of Georgia LLC of the Ministry of Regional  
Development and Infrastructure for the Asian Development Bank

This initial environmental examination is a document of the borrower. The views expressed herein do not necessarily represent those of ADB's Board of Directors, Management, or staff, and may be preliminary in nature. Your attention is directed to the "terms of use" section of this website.

In preparing any country program or strategy, financing any project, or by making any designation of or reference to a particular territory or geographic area in this document, the Asian Development Bank does not intend to make any judgments as to the legal or other status of any territory or area.

## ABBREVIATIONS

ADB	- Asian Development Bank
CA	- Cross section area
CC	- Civil Contractor
DC	- Design Consultant
DREP	- Division of Resettlement and Environmental Protection
EA	- Executing Agency
EIA	- Environmental Impact Assessment
EIP	- Environmental Impact Permit
EMP	- Environmental Management Plan
EMS	- Environmental Management Specialist
ES	- Environmental Specialist (at DREP)
GoG	- Government of Georgia
GRC	- Grievance Redress Mechanism
IA	- Implementing Agency
IEE	- Initial Environmental Examination
IP	- Investment Program
IPMO	- Investment Program Management Office
kg	- Kilogram
km	- Kilometre
lpcd	- Litres per Capita per Day
M	- meter
MFF-IP	- Multitranchise Financing Facility Investment Program
mg/l	- milligram per litre
mm	- millimetre
MoENRP	- Ministry of Environment and Natural Resources Protection
MoRDI	- Ministry of Regional Development & Infrastructure
UWSCG	- United Water Supply Company of Georgia
SC	- Supervision Consultant
SSEMP	- Site Specific Environmental Management Plan
WS	- Water Supply
WSS	- Water Supply & Sanitation

## TABLE OF CONTENTS

EXECUTIVE SUMMARY .....	4
POLICY, LEGAL, AND ADMINISTRATIVE FRAMEWORK .....	5
<b>A. ADB Policy .....</b>	<b>5</b>
<b>B. Georgian Law .....</b>	<b>6</b>
<b>i. Framework Legislation .....</b>	<b>6</b>
<b>C. Licenses &amp; Approvals Required .....</b>	<b>8</b>
<b>ii. Administrative Structure in Georgia .....</b>	<b>10</b>
DESCRIPTION OF PROJECT .....	11
1. Type of the Project .....	11
2. Category of the Project .....	12
3. Need of the Project .....	12
4. Location .....	12
5. Existing Situation .....	13
6. Project Description .....	15
7. Construction Activities .....	18
8. Implementation Schedule .....	18
9. Operation of Improved Water Supply System .....	18
DESCRIPTION OF THE ENVIRONMENT (BASELINE DATA) .....	19
1. Physical Resources .....	19
2. Topography and Soils .....	20
3. Surface water .....	21
4. Groundwater .....	22
5. Geology/Seismology .....	23
6. Flora .....	24
7. Protected Areas .....	24
8. Fauna .....	24
9. Economic Development: (e.g.) .....	25
10. Social and Cultural Resources: .....	27
ANTICIPATED ENVIRONMENTAL IMPACTS AND MITIGATION MEASURES .....	28
1. Summary of Activities and Anticipated Impacts .....	28
2. Air Quality .....	29
3. Water Quality .....	31
4. Soils Quality and Topsoil Management .....	32
5. Biological Environment .....	33
6. Hazardous Construction Wastes .....	34
7. Socio-Cultural Resources .....	36
8. Noise and Vibration .....	38
9. Construction Camps .....	39
10. Construction Related Impacts at the Quarrying Sites .....	39
11. Cumulative Impacts .....	40
ANALYSIS OF ALTERNATIVES .....	40
INFORMATION DISCLOSURE, CONSULTATION, AND PARTICIPATION .....	41
GRIEVANCE REDRESS MECHANISM .....	42
ENVIRONMENTAL MANAGEMENT PLAN .....	45
1. Institutional Arrangements .....	45
2. Performance Indicators .....	46
3. Monitoring .....	54
CONCLUSION AND RECOMMENDATION .....	57
1. Recommendation .....	57
2. Conclusion .....	58

## APPENDIX

1. Minutes of Meeting of Public Hearing on 10th of May 2012
2. Chance Find Report Form

## LIST OF TABLES

Table 1: New reservoirs and collector reservoirs .....	16
Table 2: Rehabilitation of pumping stations .....	17
Table 3: Replacement of transmission main .....	17
Table 4: New transmission mains .....	17
Table 5: New distribution pipes .....	17
Table 6: The reference values of background concentrations (mg/m <sup>3</sup> ) .....	20
Table 7: Environmental management cost table .....	46
Table 8: Environmental performance indicators .....	47
Table 9: Environmental Impacts and Mitigation Measures .....	48
Table 10: Environmental Monitoring Plan for general construction activities at Kutaisi .....	55

## LIST OF MAPS

Map 1: Location of project town .....	13
Map 2: Water Supply Network and recently rehabilitated districts (green colour).....	15
Map 3: Measures in Water Supply System Phase II.....	16
Map 4: River Network in Western Georgia .....	22
Map 5: Hydro-geological Zones .....	23
Map 5: Seismic Zones of Georgia.....	24
Map 6: Historical Monuments that are located at the vicinities of the project area .....	26
Map 7: Kutaisi - office of the UWSCG in Gugunava Street 12.....	42

## LIST OF FIGURES

Fig. 1 Existing Water Supply at Kutaisi .....	14
Fig. 2 Grievance Redress Mechanism .....	43

## EXECUTIVE SUMMARY

1. It is proposed to improve the water supply system in Kutaisi under the Asian Development Bank (ADB) funded Urban Services Improvement Investment Program. This Investment Program, implemented in seven towns, will develop the water and sanitation services, which will improve quality of life and optimize the social and economic development. The Ministry of Regional Development and Infrastructure (MoRDI) is the Executing Agency (EA) and the United Water Supply Company of Georgia (UWSCG) is the Implementing Agency (IA) of this Program. The WSS program will be implemented from mid-2011 and likely to be completed by 2019. A first phase of the Kutaisi sub-project, financed under Tranche 1, focuses on water supply measures and is implemented in 2013 – 2015. Phase II, financed under Tranche 3, and with a start of implementation in 2014 will complete the rehabilitation and extension of the water supply system. Since the water supply subproject is unlikely to have significant adverse impacts, it is classified as environment Category B, and accordingly an Initial Environmental Examination has been conducted. This is a summary of the IEE Report.

2. Kutaisi, the capital of Imereti region, is the second largest Georgian city and the political, economic, and cultural centre of Imereti region. Imereti region, with a total area of 6,515.8 km<sup>2</sup>, is strategically located on the main East-West transit corridor between the Caspian and the Black Sea. It is the most populated region in Georgia, with more than 702,700 inhabitants (based on 2002 data). It consists of 12 administrative-territorial units – the city of Kutaisi and eleven districts (Baghdati, Vani, Zestaphoni, Terjola, Samtredia, Tkibuli, Khargauli, Khoni, Tskaltubo, and Chiatura). Kutaisi, which is about 240 km to the west from the capital City of Tbilisi, lies at the River Rioni, the main river in western Georgia draining to the Black Sea.

3. The service level of water supply is low with partial coverage, high system losses, and insufficient pressure in the system. With the government initiative to develop Kutaisi, the water demand is likely to grow slightly. This subproject will expand the system and improve the service standards, with a daily supply of potable water in adequate quantity (205 lpcd). The subproject is designed to meet the projected demand of 2040. This will be achieved by: (i) restructuring of water supply network if required (ii) exchange / reconstruction of old transmission pipes (iii) and construction of new reservoirs.

4. The Kutaisi WS system improvement sub-project is relatively large in scale and maintenance as compared to other project towns. Sataplia Nature Reserve is located 9 km north-west from Kutaisi. None of the components will encroach into this reserve and most of the activities are planned along the existing roads. Further any disturbance will be limited to construction period. The identified impacts are mostly short-term, localized and can either be easily avoided or mitigated.

5. Most of the predicted impacts are associated with the construction process. Impacts mainly arise from the generation of dust from soil excavation and refilling; disturbance of residents, traffic and activities in the town; increase of silt load in the river; loss of top soil, removal of trees, and from the disturbance to wildlife due to trenches. These are common impacts of construction, and following methods are suggested for their mitigation: (i) Utilizing surplus soil for beneficial purposes; (ii) Measures to reduce/control dust generation (cover/damp down by water spray; consolidation of top soil, cover during transport etc); (iii) Providing prior public information; (iv) conducting no construction in the river bed in fish breeding season; (v) restoring the top soil after construction, (vi) avoiding tree cutting through location alignment changes, and (vii) to avoid safety hazards construction site will be secured at critical segments.

6. The water supply sub-project is likely to have several positive benefits during operation. The citizens will be provided with a constant supply of better quality water, which will improve the quality of life.

7. To ensure that all the mitigation measures as suggested are implemented, a program of environmental monitoring is prepared. The Division of Resettlement and Environmental Protection (DREP) of UWSCG will oversee and be responsible for implementation of mitigation and monitoring measures. Provided the mitigation and enhancement measures are implemented in full, there should be no significant negative environmental impacts as a result of the subproject. There should in fact be positive benefits through major improvements in quality of life and individual and public health once the scheme is in operation.

## **POLICY, LEGAL, AND ADMINISTRATIVE FRAMEWORK**

8. This section discusses the national and local legal and institutional framework within which the environmental assessment is carried out. It also identifies project-relevant international environmental agreements to which the country is a party.

### **A. ADB Policy**

9. Superseding the previous safeguard policies (the Involuntary Resettlement Policy, 1995, the Policy on Indigenous Peoples, 1998, and the Environment Policy 2002), ADB, has adopted a comprehensive Safeguard Policy Statement in 2009 (SPS, 2009). This Statement describes common objectives of ADB's safeguards, lays out policy principles, and outlines the delivery process for ADB's safeguard policy. It applies to all ADB-financed and administered projects, and their components including investment projects funded by a loan, grant or other means.

10. Aiming on promotion and sustainability of project outcomes by protecting the environment and people from projects' potential adverse impacts, the objectives of ADB's safeguards are to:

- avoid adverse impacts of projects on the environment and affected people, where possible;
- minimize, mitigate, and/or compensate for adverse project impacts on the environment and affected people when avoidance is not possible; and
- help borrowers/clients to strengthen their safeguard systems and develop the capacity to manage environmental and social risks.

11. The objective of environmental safeguards is to ensure the environmental soundness and sustainability of projects and to support the integration of environmental considerations into the project decision-making process. All ADB funded projects are screened at initial stages of preparation and categorized according to significance of the project's potential environmental impacts. Projects are assigned to one of the following three categories:

**Category A** - Projects likely to have significant adverse environmental impacts, which are irreversible, diverse or unprecedented and may affect an area larger than the location subject to physical works. An Environmental Impact Assessment is required.

**Category B** – Projects with adverse environmental impacts that are less significant than those of Category A projects, are site-specific, generally not irreversible, and in most cases can be mitigated more readily than for Category A projects. An Initial Environmental Examination (IEE) is required.

**Category C** - likely to have minimal or no adverse environmental impacts; EIA is not required.

12. The Kutaisi WS subproject has been classified as environmental assessment category B (some negative impacts but less significant than category A) according to the criteria laid down in the checklist for water supply projects of the ADB's Environmental Assessment and Review Framework (November 2010) that was especially prepared for the environmental assessment of the Georgia Urban Services Improvement Investment Program.

13. *ADB Review and Approval.* For Category B projects the Draft IEE report is reviewed by ADB's Operational Department (in this case Central & West Asia Department) and after addressing their comments, if any, the EA then officially submits the IEE reports to ADB. Completed reports are made available on the ADB website.

## **B. Georgian Law**

### **i. Framework Legislation**

14. The basic legal document is "The Constitution of Georgia", which was adopted in 1995. While the Constitution of Georgia does not directly address environmental matters, it does lay down the legal framework that guarantees environmental protection and public access to information with regard to environmental conditions.

15. Article 37, Part 3 states that "any person has the right to live in a healthy environment, use the natural and cultural environment. Any person is obliged to take care of the natural and cultural environment." Article 37, Part 5 states that "an individual has the right to obtain full, unbiased and timely information regarding his working and living environment."

16. Article 41, Part 1 states that "a citizen of Georgia is entitled to access information on such citizen as well as official documents available in State Institutions provided it does not contain confidential information of state, professional or commercial importance, in accordance with the applicable legal rules.

17. The **Law of Georgia on Environmental Impact Permit (2007)** defines the full list of activities on the territory of Georgia subject to mandatory ecological expertise. The Law defines the legal aspects of issuing an environmental permit, undertaking the ecological expertise, informing the public and participating in the given procedures. Under the Law, the environmental permit is the authorization to realize the planned activities. Under the Law, an environmental permit is issued by the Ministry of Environmental Protection and Natural Resources of Georgia based on the review/expertise of the application of an applicant for the environmental permit. The aim of the Law is to ensure the protection of a human health, natural environment, physical assets and cultural heritage during the activity.

18. The **Law of Georgia on Environment Protection (1997)** regulates the legal relations between the state establishments and physical or legal entities in the field related to the use of territorial waters, air space, including continental shelf and special economic zones, environmental protection and natural resources on the territory of Georgia. The Law regulates the standards of the environmental protection and issues of environmental management; it describes the economic sanctions, standards and issues of environmental impact, different issues of protection of the natural eco-systems and biodiversity, and global and regional management issues. In addition to the above-mentioned, the Law considers the major principles of waste management. The law defines the ecological requirements for the waste (Article 34). According to the provision of the given Article, an entrepreneur is obliged

to reduce the origination of industrial, domestic and other types of waste, ensure their treatment, utilization, placement or burying by considering the environmental, sanitary-hygienic and epidemiological standards and rules. The Law defines the requirements for the placement of toxic, radioactive and other hazardous waste and prohibits their discharge in the surface water sources.

19. **Law of Georgia on Licenses and Permits (2005)** defines the list of activities needing licenses or permits, including so called “Environmental permit”. It also defines the requirements for the license or permit issue. The Law, together with the normative by-laws, regulates such organized activity or action, which relates to an indefinite circle of entities, is characterized by increased hazard to the human life or health, affects particularly important state or public interests or is related to the use of a state resource. The given Law regulates the field regulated by a license or permit; it gives a thorough list of licenses and permits, and establishes the rules to issue the licenses and permits, makes amendments to them or abolish them. Under the Law, a state regulation of the activity or action through a license or permit is undertaken only when the given activity or action is directly associated with the increased hazard to the human life or health or fields of state or public interests. The state regulation is undertaken only when the issuance of a license or permit is a real means to reduce the hazard in question or consider state or public interests. The aim and major principles of regulating the activity or action via licenses or permits are as follows:

- Provision and protection of human life and health;
- Safety and protection of a human’s residential and cultural environment;
- Protection of state and public interests;

20. **The Law of Georgia on State Ecological Expertise (2007).** Under the given Law, the ecological expertise is a necessary measure for making decision on the issuance of environmental and/or construction permit(s). The aim of the ecological assessment is to protect the ecological balance by considering the requirements of environmental protection, rational use of natural resources and principles of sustainable development. A positive conclusion of the ecological expertise is mandatory for obtaining an environmental and/or construction permit. In addition, the holder of environmental and/or construction permit is obliged to comply with conditions specified in the ecological expertise conclusion. The process of ecological assessment is regulated by the Ministry of Environmental Protection and Natural Resources.

21. The procedure to be observed during ecological expertise, as well as the requirements on forming the expert commission is prescribed in the Provision on the Rule for Carrying out Ecological Expertise, which is approved by the Minister of Environment and Natural Resources Protection of Georgia. The full list of the activities, subject to mandatory ecological expertise for decision making on issuance of environmental permit or building permit, is specified by the Law of Georgia on Environmental Permit.

22. The state ensures protection of the environment and, correspondingly, protection of water as its main component in **The Law of Georgia on Water (1997)**. All residents of Georgia are liable to ensure the rational and sustainable use and protection of water. They have to prevent its contamination, pollution and depletion. The dumping of industrial, household and other garbage and wastes in water bodies is prohibited according to this act. The disposal of industrial, household and other effluents into water bodies is permitted on the basis of a license by the Ministry. With the objective of protecting the Black Sea and preserving its ecological system, all natural and legal persons (including foreigners) are obliged to take measures for preventing pollution of the sea with wastewater from the sources of pollution located on the land. The use of a surface water body for discharging industrial, communal-household, drainage and other wastewater is allowed only under a water use license

issued on the basis of the Ministry-approved multipurpose water utilization plans and water management balance-sheet.

23. The **Law of Georgia on Cultural Heritage (2007)**. Article 14 of the Law specifies the requirements for 'large-scale' construction works. According to this Article, a decision on career treatment and ore extraction on the whole territory of Georgia, as well as on construction of an object of a special importance as it may be defined under the legislation of Georgia, is made by a body designated by the legislation of Georgia based on the positive decision of the Ministry of Culture and Monument Protection of Georgia. The basis for the conclusion is the archeological research of the proper territory to be carried out by the entity wishing to accomplish the ground works. The entity wishing to do the ground works is obliged to submit to the Ministry the documentation about the archeological research of the territory in question. The preliminary research should include field-research and laboratory works. In case of identifying an archeological object on the territory to study, the conclusion of the archeological research should contain the following information: (a) a thorough field study of the archeological layers and objects identified on the study territory by using modern methodologies, (b) recommendations about the problem of conservation of the identified objects and planning of the building activity on the design territory, on the basis of the archeological research

24. The aim of the Law of Georgia on Public Health (2007) is as follows: Promotion of the introduction of a good health and healthy lifestyle of the population; Creation of the environment, which is safe for a human health; Promotion of the protection of the reproductive health of a family; Prevention of infectious and non-infectious diseases. The Law defines the rights and obligations of the population and legal entities in the field of public health. Aiming at establishing the environment safe to the public health, the Ministry sets the qualitative standards for the environment safe for a human health (atmospheric air, water, soil, noise, vibration, electromagnetic radiation), including maximum permissible concentrations and rates of harmful impact. The standards are mandatory. Every person on the territory of Georgia is obliged not to carry out the activity, which causes a hazard of the infectious and non-infectious diseases to spread and helps the origination of the risks to human health; protect the sanitary and epidemiological standards; to supply the information to the public health department about all emergencies caused by the violation of the sanitary norms in the production or technological process, etc. The observance of the standards is controlled by appropriate state structures. The responsibility for the internal and external audits rests with a certified, independent laboratory.

25. **Environmental Assessment and Review Framework (November 2010, EARF)** was established for the Asian Development Bank funded Georgia Urban Services Improvement Investment Program (or the Investment Program). This is prepared to adequately address the ADB Safeguard Policy Statement (2009) requirements and is to be endorsed by the Georgian government. Projects have to be assigned to Categories A, B, and C. General mitigation measures are listed for anticipated impacts.

### **C. Licenses & Approvals Required**

26. Environmental assessment of various activities and development projects in Georgia is governed by the Law on Environmental Impact Permits (EIP). This Law notifies the list of the activities and projects, which are subject to ecological expertise and require Environmental Impact Permit. The Law also makes the public participation mandatory in the process of environmental assessment, ecological expertise and decision making on issuance of an environmental impact permit. Under this Law, various projects/activities have been divided into four categories based on their size, importance and potential environmental impact, and sets out permitting process for each category.

27. None of the components of the proposed water supply improvement subproject in Kutaisi are notified in the Law on EIP and therefore environmental impact permit is not required.

28. The requirements related to EIA studies and the EIA report are set forth in the Order N31 of 15 May 2013 of MoENRP.

29. The **Law of Georgia “On the Red List and Red Book” (2003)** regulates the legal relations in the field of developing the Red List and Red Book, protecting and using the endangered species, except the legal issues of the international trade with endangered wild animals and wild plants, which within the limits of the jurisdiction of Georgia are regulated by virtue of the Convention ‘On the international trade with the endangered species of wild fauna and flora’ concluded on March 3 of 1973 in the city of Washington. According to Article 10 of the Law, any activity, including hunting, fishing, extraction, cutting down and hay-mowing, except particular cases envisaged by the present Law, Law of Georgia ‘On animal life’ and legislation of Georgia, which may result in the reduction in number of the endangered species, deterioration of the breeding area or living conditions, is prohibited. The Red List of Georgia was approved by the Presidential Decree No. 303 ‘On approving the Red List of Georgia’ (May 2, 2006).

### 30. Other National Environmental Legislations and Applicability

Legislation	Applicability	Remarks
Forestry Code of Georgia, 1999	Applicable to works located in forest areas	Requires permission from the Ministry of Economic and Sustainable Development (MESD). The project proponent shall submit application to the MESD, which in turn forwards it to the Forest Division of MoEPNR for its review and advise, based on which the MESD gives an approval to proceed with works in forest areas
Law on Ambient Air Protection, 2000		It stipulates Maximum Allowable Concentration (MAC) of various pollutants in Ambient Air; however the establishment of emission standards for various sources or activities is under process, therefore at present no standards are available
Law on System of Protected Areas, 1996	Applicable to works or activities in protected areas	Depending on the activity and type of protected area, permission for any work will be granted or denied
Technical Regulation of Drinking Water, 2007 (Decree N 349/N), the Ministry of Labour, Health and Social Affairs of Georgia	Applicable to water supply projects	Water supply and monitoring shall comply with the technical regulation
Rules of the Protection of the Surface Waters of Georgia from Pollution, 1996 (№130 order of the Minister of the Protection of the Environment and Natural Resources of Georgia)	Applicable to water supply projects	Source water quality shall comply with the provisions for domestic use

Legislation	Applicability	Remarks
Technical Regulation of Environmental Protection, 2008 (Decree N745), Minister of the Protection of the Environment and Natural Resources of Georgia	Applicable to sewerage projects	Treated effluent disposal from sewage treatment plants shall comply with the specified standards
"Approval of Environmental Quality Standards" – approved by Minister of Health, Labour and Social Affairs (Decree number 297n of August 16, 2001)		The Georgian standards for noise control as approved by the Decree of the Minister for Health, Labour and Social Affairs (297n of August 16, 2001) upon the "Approval of Environmental Quality Standards"

31. Some of the **International Treaties and Conventions** Ratified or Signed by Georgia are provided in the list below.

- Short List of the Ratified or Signed Conventions:
- Ramsar Convention on Wetlands (1996);
- United Nations Framework Convention on Climate Change (UNFCCC) (1994);
- Kyoto Protocol (1994);
- Kyoto Protocol (1999);
- Basel Convention on the Control of Transboundary Movement of Hazardous Waste and Their Disposal (1999);
- Convention on Access to Information, Public Participation in Decision-making and Access to Justice in Environmental Matters (Aarhus Convention) (1999);
- Convention on Biological Diversity (1994);
- Convention on International Trade in Endangered Species of Wild Fauna and Flora (CITES) (1996);
- Convention on Long-range Transboundary Air Pollutants (1999);
- Stockholm Convention on Persistent Organic Pollutants (2006);
- Convention on the Conservation of European Wildlife and Natural habitats (2008);
- The Vienna Convention for the Protection of the Ozone Layer (1995);
- Montreal Protocol on Substances that Deplete the Ozone Layer (1995).

## ii. Administrative Structure in Georgia

32. Ministry of Environment and Natural Resources Protection of Georgia (MoENRP). MoENRP has the overall responsibility for protection of environment in Georgia. The Department of Permits of MoENRP is responsible for reviewing EIAs and for issuance of the Environmental Permits. MoENRP is the main state body pursuing state policy in the sphere of environment. Their functions for regulating economic or development activities with regard to environmental protection include:

- Issuing permits for project development (Environmental Impact Permit)
- Setting emission limits and issuing surface water intake and discharge consents
- Responding to incidents and complaint

33. For the projects, which do not require Construction Permit, the Environmental permit is being issued by the MoENRP on the ground of State Ecological Examination. State Ecological Examination is carried out by MoENRP upon official submission of Environmental Impact Assessment (EIA) prepared by project developers.

34. For projects requiring Construction Permit, no special permit is issued by MoENRP (according to “One window principle”, only one permit shall be issued for each activity). The Construction Permit is issued by the Ministry of Economy and Sustainable Development of Georgia, but the issuance of the Permit is subject to the consent of the MoENRP in a form of Conclusion of Ecological Expertise, as well as the Ministry of Culture (Centre of Archaeological Studies, Department of Monuments protection). Consent of the MoENRP in such cases should be issued according to the same procedures (EIA, public consultations; SEE etc.) as for issuing Environmental Permit.

35. The Ministry of Economic and Sustainable Development as an administrative body issuing a permit ensures the involvement of the MoENRP as a different administrative body in the administrative proceedings initiated for the purpose of permit issuance, in accordance with Georgia’s Law on Licenses and Permits.

36. As a rule, EIA permitting conditions contains requirement for informing MoENRP regarding fulfilment of the EIA permit conditions. This basically means giving information regarding implementation of Environmental Management and Monitoring Plans.

37. The **Ministry of Culture and Monument Protection of Georgia** is responsible for the supervision of the construction activities in order to protect archaeological heritage. In case if construction is to be carried out in a historic sites or zones of cultural heritage, consent of the Ministry of Culture is also required for issuing construction permit (If such is necessary).

## DESCRIPTION OF PROJECT

### 1. Type of the Project

38. The proposed Urban Services Improvement Investment Program is intended to optimize social and economic development in selected urban areas (provincial capitals and secondary towns) through improved urban water and sanitation services. This ADB funded Multitranche Financing Facility Investment Program complements the government’s emerging vision for the WSS sector, formulated in its sector development strategy and road map, policy framework and reform implementation plan, and a business climate that encourages increased donor investment. This support will also complement on-going donor efforts to improve and expand Georgia’s urban WSS services. ADB identifies support to developing the country’s municipal infrastructure a key contributor to enhancing sustainable economic growth, with the cross cutting themes of governance, regional cooperation and environmental protection. ADB’s support can contribute to: (i) sector reforms; (ii) strengthening the link between financing local infrastructure projects and decentralization reforms; (iii) stimulating local economic development; and (v) improving the quality of life of urban population

39. The Investment Program focuses on investments in improvement of basic urban infrastructure (i.e. water supply and sewerage). Besides, it will also provide policy reforms to strengthen urban governance, management, and support for urban infrastructure and services. This Program will be implemented in tranches over a period of 8 years beginning in 2011. The Executing Agency (EA) is the Ministry of Regional Development and Infrastructure (MoRDI), Government of Georgia; and the Implementing Agency (IA) is the United Water Supply Company of Georgia, a wholly-owned company of Government of Georgia under MoRDI.

40. The Kutaisi WS improvement project has been classified as environmental assessment category B (some negative impacts but less significant than category A). According to ADB procedures, the impacts of the subproject were assessed by the Initial Environmental Examination, conducted according to ADB Safeguard Policy Statement (2009). According to Georgian Legislation an Environmental Impact Assessment does not need to be conducted for the project measures under Tranche 3.

41. This IEE relates to the water supply subproject only.

42. This is an urban water supply improvement sub-project. It involves the rehabilitation of the part of the network that was not included under Tranche 1, the construction of one new reservoir (New East), the construction of two small collector reservoirs for the pumping stations at Partkhanakanebi and Mukhniari, the extension of TV Tower Reservoir (second chamber) and the rehabilitation of Kvitiri and Mukhnari pumping stations.

## **2. Category of the Project**

43. According to the law of Georgia on Permit on Environmental Impact (2008) the project does not require EIA and obtaining of Permit on Environmental Impact.

44. Following 'Environmental Considerations in ADB Operations' of September 2009, the Project can be considered to be a Category B project requiring an Initial Environmental Assessment (IEE). The Project will not require an acquisition of land and resettlement activities will not become necessary at all. There is no protected area located closely and ecologically sensitive habitats will not be affected

## **3. Need of the Project**

45. The service level of urban water supply and waste water treatment at present is not satisfactory in Georgia. Services are not available to the entire population and the serviced areas suffer with inefficient service levels. Systems are old and inefficient. The situation is no different in the program town of Kutaisi. The WS project is needed because the present water supply infrastructure in Kutaisi is inefficient and inadequate to the needs of the growing population and tourists.

## **4. Location**

46. Kutaisi, the capital of Imereti region, is the second largest Georgian city and the political, economic, and cultural centre of Imereti region. Imereti region, with a total area of 6,515.8 km, is strategically located on the main East-West transit corridor between the Caspian and the Black Sea. It is the most populated region in Georgia, with more than 702,700 inhabitants (based on 2002 data). It consists of 12 administrative-territorial units – the city of Kutaisi and eleven districts (Baghdati, Vani, Zestaphoni, Terjola, Samtredia, Tkibuli, Kharaugauli, Khoni, Tskaltubo, and Chiatura). Kutaisi, which is some 240 km to the west from the capital City of Tbilisi, lies on the river Rioni, the main river in western Georgia draining to the Black Sea. The total population of the City amounts to 192,500 (2010). Regional location of Kutaisi is shown in **Map 1**.



**Map 1: Location of project town**

## 5. Existing Situation

47. The United Water Supply Company of Georgia<sup>1</sup> (UWSCG) provides water supply in Kutaisi. Owing to its location, there are numerous well fields. These well fields are the main source of water supply to the town. These sources at present provide 36,489 m<sup>3</sup>/day.

48. Partskhanakanebi Well field is the largest single source of supply for Kutaisi. It lies near the village of the same name, about 15 km south-south west of the outskirts of the city, among farmland and river floodplains. The pumps produce 1,250 m<sup>3</sup>/h (347 l/s). Mukhiani Well field is near to Partskhanakanebi, only 3 km further to the east. Four pumps each of Russian manufacture, rated at 1,000 m<sup>3</sup>/hour (278 l/s). Kopitnari well field was developed in 1970. The well field itself has a total of 22 wells, of which 16 are currently in operation. They are each rated at 120 m<sup>3</sup>/hour though it is doubtful whether they actually deliver that flow. The village of Gumati is situated on the right (west) bank of the Rioni River some 4 km up-stream (north) of Kutaisi. At present four of the original seven wells from Gumati well field remain operational. They are of various sizes (25, 25, 60 and 160 m<sup>3</sup>/hour), and yield in total an estimated 200 m<sup>3</sup>/hour.

49. The present water supply system covers about 95% of the population in urban areas. Due to old systems water losses are very high.

50. The present sub-project is designed to improve the service standards of water supply in Kutaisi – daily supply of potable water in adequate quantity (205 lpcd) at requisite pressure. In addition water has to be provided for industrial purposes (2,300 m<sup>3</sup>/d).

51. The chemical quality of the groundwater is good and the samples meet all of the standards applicable to Georgia except for the bacteriological tests, where the failure rate is relatively high.

<sup>1</sup> A government company under Ministry of Regional Development and Infrastructure

52. The proposed complete WS infrastructure improvement works will be located in and around the town. There are three main components of the project: (i) restructuring of water supply network if required (ii) exchange / reconstruction of old transmission pipes and (iii) construction of new reservoirs and pumping stations.

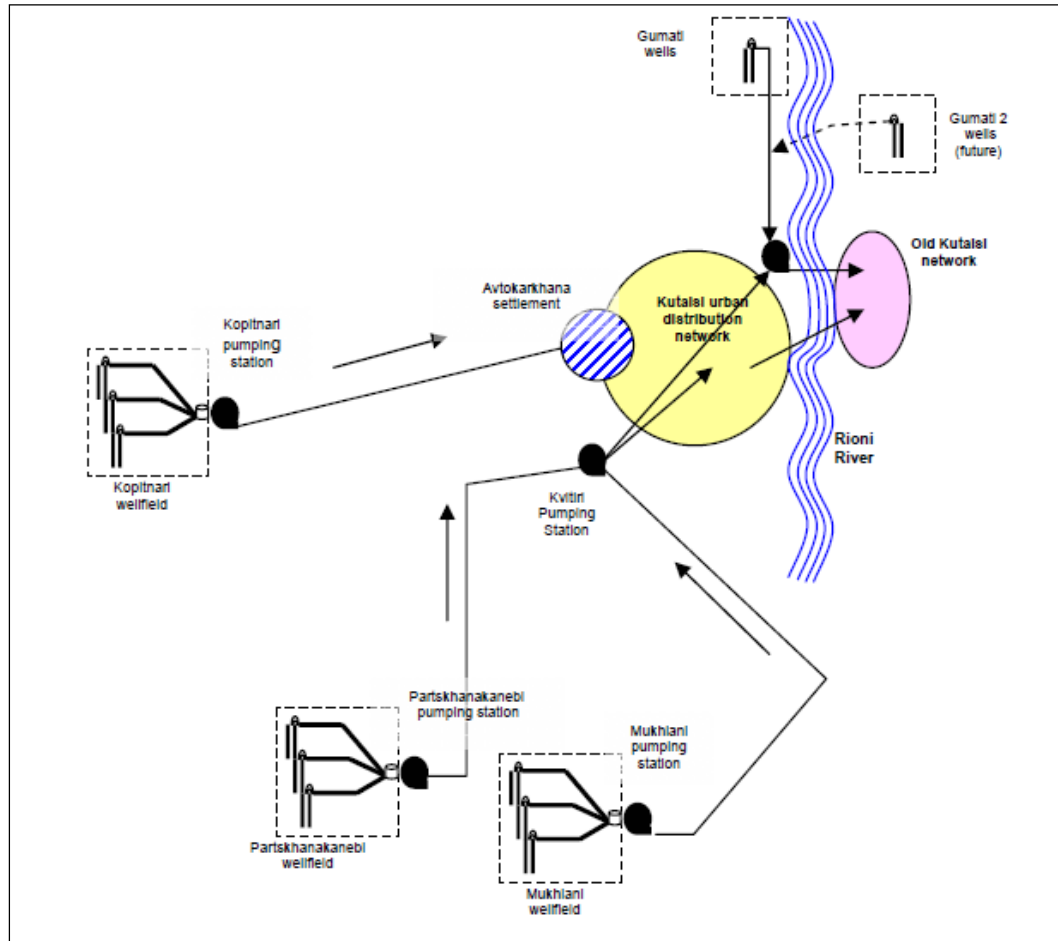
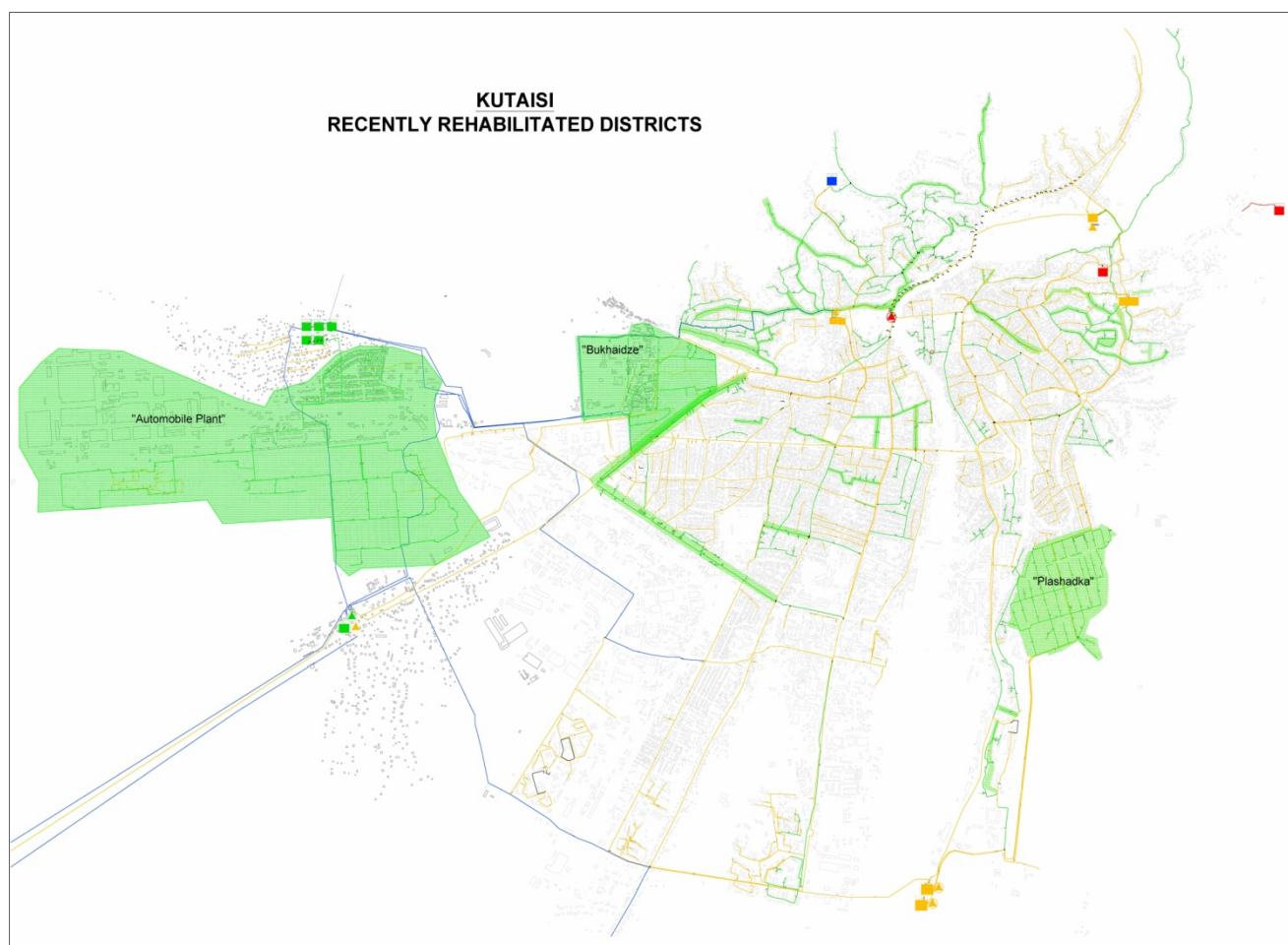


Fig. 1 Existing Water Supply at Kutaisi



**Map 2: Water Supply Network and recently rehabilitated districts (green colour)**

53. Above map shows water supply network within Kutaisi. Old pipes that need replacement will be exchanged by new ones. To overcome deficiencies in supply, the network will be restructured where necessary.

## **6. Project Description**

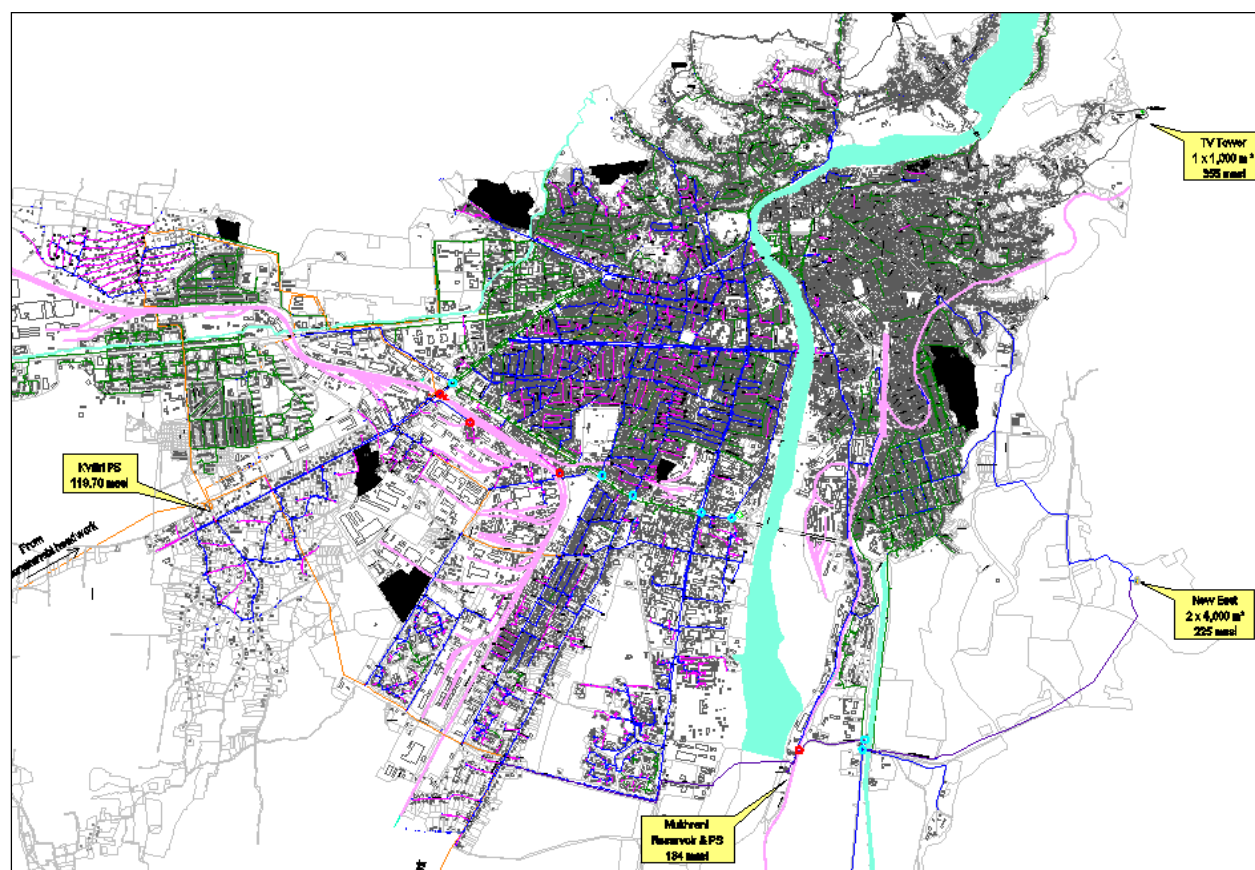
54. A feasibility study was conducted to improve the water supply system in Kutaisi to meet the design year demand (2040) and the project is formulated for implementation under the proposed ADB funded Investment Program. Works are proposed to be implemented through multi tranche funding.

55. The proposed water supply infrastructure improvement works have been elaborated based on the development goals identified in the Feasibility Study. The following measures are foreseen under Tranche 3. They are Phase II of the extension and rehabilitation of the water supply system.

- (i) the rehabilitation of the part of the network that was not included under Tranche 1.
- (ii) the construction of one new reservoir (New East) that will be located East of the Kutaisi, at a distance several hundred meters from the closest population.
- (iii) the construction of two small collector reservoirs for the pumping stations at Partskhanakanebi and Mukhnari

- (iv) the extension of TV Tower Reservoir (second chamber)
- (v) the rehabilitation of Kvitiri and Mukhnari pumping stations.

56. The following map illustrates the measures of Phase II that are part of Tranche 3. Blue lines present new pipes to be laid. Yellow boxes describe the new reservoirs and collector reservoirs.



**Map 3: Measures in Water Supply System Phase II**

57. The following tables summarize the investment measures.

Reservoir	Supplied from	Volume	Max Water Level	Height	Service Area / PS / Reservoir	Details
<b>Phase II</b>		[m³]	[m]	[m]		
<b>Collector Partskhanakanebi</b>	Partskhanakanebi well field	1 x 1,000	65	4.00	Kvitiri PS	square
<b>Collector Mukhnari</b>	Mukhiani well field	2 x 1,000	134	4.00	New East Reservoir	square
<b>New East</b>	PS Mukhnari	2 x 4,000	225	4.00	east part, east of the river	circular
<b>TV Tower</b>	PS Kldiashvili	1 x 1,000	355	4.00	higher zones, east of the river	circular
<b>Total [m³]</b>		<b>12,000</b>				

Table 1: New reservoirs and collector reservoirs

	Technical Description
Kvitiri PS	Centrifugal Pumps for Water Supply system
	Equipment: control and measure instruments for monitoring and remote control, fittings, connection pipes, valves
	Technical data:
	Total head: 103 m
	Hgeo: appr. 86 m
	Qmax = 913 m³/h (3 operation, 1 standby)
	min. overall efficiency: 70%
Mukhnari PS	Centrifugal Pumps for Water Supply system
	Equipment: control and measure instruments for monitoring and remote control, fittings, connection pipes, valves
	Technical data:
	Total head: 108 m
	Hgeo: appr. 94 m
	Qmax = 620 m³/h (2 operation, 1 standby)
	min. overall efficiency: 70%

Table 2: Rehabilitation of pumping stations

Start of Transmission Main	End of Transmission Main	Existing Material	Existing Diameter [mm]	New Material	New Diameter [mm]	Length [m]
Crossing point of Mukhiani Main	Mukhnari PS	Steel	400	DCI	500	2,950

Table 3: Replacement of transmission main

Start of Transmission Main	End of Transmission Main	Material	Diameter [mm]	Length [m]
PS Mukhnari	New East reservoir	DCI	500	4,180
New East reservoir	Network	DCI	500	4,800

Table 4: New transmission mains

Pipe Diameter	Pipe Length	Pipe Diameter	Pipe Length
OD 50	2,454.50	OD 225	5,907.00
OD 63	23,701.00	OD 250	2,171.20
OD 75	14,755.20	OD 280	9,455.70
OD 110	10,319.90	OD 315	1,517.60
OD 125	32,488.20	OD 355	5,100.10
OD 140	3,707.20	OD 400	4,351.60
OD 160	1,420.80	OD 450	2,854.40
OD 180	23,156.00	OD 500	795.60
OD 200	2,773.30	OD 630	10,335.50

Table 5: New distribution pipes

## **7. Construction Activities**

58. Main components the subproject are the restructuring of water supply network, the exchange / reconstruction of old transmission pipes, the construction of new reservoirs, two collector reservoirs and the rehabilitation of two pumping stations.

59. Construction practices of these works are described below:

- (i) Pipe Laying. Existing old, malfunctioning or leaking pipes will be replaced. Pipelines will follow existing roads and existing alignments. Trenches will be dug using a backhoe digger, supplemented by manual digging.
- (ii) Excavated soil will be placed alongside, and the pipes will be placed in the trench. Pipes will be joined, after which excavated soil will then be replaced on beneath and sides. The trench will be refilled with excavated soil and sand and compacted manually. The depth of trench will be 2 m – 3 m depending on topographical conditions. Minimum width of the trench will be between 0,8 m. After construction part of trench will be occupied by pipe and sand layer, and trench is refilled with the excavated material.
- (iii) Construction of Reservoir. This work will involve excavation for foundations, placing of reinforcement rods in wooden shutters and pouring of concrete in voids to form foundations, floor, walls and roof. Cement mortar plaster will be applied to walls (outside and inside), floor and roof for smooth finish. Inlet and outlet pipes and fixers/valves will be installed. Excavation for foundation will be done by backhoe digger or manually, where required. Concrete will be mixed in concrete mixer and needle (pen) vibrator will be used for compaction of concrete around the reinforcement. The quantity waste/surplus soil generated from this activity will be insignificant and can be used within the site to level the ground surface.

60. *Source of construction materials.* In Kutaisi, sand is sourced from River Rioni and aggregate is sourced from licensed crushers. Construction waste/debris is normally used for levelling low lying areas in the town. No additional IEE will be required as material extraction will be limited to licensed sites and facilities only.

61. *Transportation routes.* As illustrated in Map 3, transportation routes to the structures will pass through populated areas. Only New East Reservoir will be accessed from the highway Tbilisi – Kutaisi and a small dirt road. For mitigation measures please refer to the subsequent chapters.

## **8. Implementation Schedule**

62. Construction works of Phase II are scheduled to start in 2014. The construction period will be three years.

## **9. Operation of Improved Water Supply System**

63. Water supply infrastructure will require repair and maintenance activities like detection and repair of leaks. Since good quality pipes are being used breaks are very rare, and leaks will be mainly limited to joints between pipes. Repair work will be conducted in the same way the pipe was laid, after locating the leaking section.

## DESCRIPTION OF THE ENVIRONMENT (BASELINE DATA)

### 1. Physical Resources

#### a. Ambient Air

64. City of Kutaisi is located in the humid subtropical region of the West Georgia. The major climate peculiarities of this region are mainly explained by its location at the east shore of the Black Sea, near the north boundary of the subtropical zone.

65. The average annual humidity in Kutaisi is 70% with lesser rate of 64% in the winter. Precipitation is also quite high with the annual quantity exceeding 1580 mm. The maximum precipitation falls in the winter months with average monthly rate of 170 mm, while the minimum rainfall period includes May and August, with monthly rates of 42 mm and 95 mm respectively. The climate conditions in the city and its environs are characterized by relatively dry and hot summer, moderately warm winter and frequent and strong east background winds.

66. Average annual days with the background winds is 114 (with maximum frequencies in winter and summer). Wind velocity achieves 40 m/s. In the West Georgia such winds just in a few hours may cause temperature rise of 10-20 degrees and humidity drop of 5-10%. The long term annual wind distribution is as follows: east winds 53%, west winds 34%, various other directional winds 13%.

67. Due to its location at the east part of Kolkheti Lowland, Kutaisi climate significantly differs from the weather conditions attributed to the cities situated at the east Black Sea coast that is well evidenced from its temperature pattern. Specifically:

- Average annual temperature is 14.5 °C
- The warmest month is August with average temperature of 23.6 °C
- The coldest month is January with average temperature of 5.2 °C
- The temperature variation magnitude is of 18.4 °C evidencing the lack of large contrasts between seasons.

68. In the specific years the maximum air temperature reaches 41.0-42.0 °C (10-year return period), and the minimum temperature drops to -17.0 °C (50-year return period). Below is provided information on average monthly temperatures and winds derived from the data of the closest meteorological station.

Average annual air temperature:

Month	I	II	III	IV	V	VI	VII	VIII	IX	X	XI	XII	Average
°C	5.2	5.8	8.4	12.9	17.9	21	23.2	23.6	20.5	16.4	11.5	7.5	14.5

Average minimum monthly air temperatures:

Month	I	II	III	IV	V	VI	VII	VIII	IX	X	XI	XII	Annual
°C	2	2.5	4.4	8.4	12.7	16.2	18.7	19.3	15.9	12.1	8.2	4.6	10.4

Absolute minimum air temperatures for each month:

Month	I	II	III	IV	V	VI	VII	VIII	IX	X	XI	XII	Annual
°C	-17	-13	-10	-5	2	9	11	11	5	-2	-10	-13	-17

Average maximum monthly air temperatures:

Month	I	II	III	IV	V	VI	VII	VIII	IX	X	XI	XII	Annual
°C	9	9.9	13.3	18.9	24.1	27	28.4	28.9	26	21.8	15.9	11.4	19.6

Absolute maximum air temperatures for each month:

Month	I	II	III	IV	V	VI	VII	VIII	IX	X	XI	XII	Annual
°C	21	25	32	35	37	40	41	42	40	35	30	25	42

69. The full scale assessment of the ambient air quality in Kutaisi has not been performed since the end of 1980s. That time the industries located within the city area were significantly more active compared to present.

70. The major components of the industrial emissions comprised suspended particles, sulphur anhydride, carbon oxide, nitrogen oxides, hydrocarbons, hydrogen sulphides, smoke, etc.

71. It should be noted that the meteorological conditions prevailed in Kutaisi largely determines the level of the air emission impact.

72. As noted above, the possibilities for any comprehensive observations over the ambient air quality was significantly restricted during the recent years. In result no information on the average concentrations of hazardous pollutants in the outdoor air was available. Therefore the population based method recommended for such situations was applied for estimating the likely concentrations of air pollutants within the city area (see Table ??). As for 1 January 2012 Kutaisi population is 196,500, the reference estimated concentrations applicable to the urban settlements with population range of 250-125 thousand shall be used.

Table 6: The reference values of background concentrations (mg/m<sup>3</sup>)

Population (thousand)	Dust	Sulphur Dioxide	Nitrogen Dioxide	Carbon Oxide
<b>250-125</b>	<b>0.4</b>	<b>0.05</b>	<b>0.03</b>	<b>1.5</b>
125-50	0.3	0.05	0.015	0.8
50-10	0.2	0.02	0.008	0.4
<10	0	0	0	0

## 2. Topography and Soils

73. *Topography.* Despite its small area, Georgia presents one of the most varied topographies within its geographical boundaries. Kutaisi lies at an elevation of 125-300 meters (410-984 feet) above sea level. To the east and north-east, Kutaisi is bounded by the Northern Imereti Foothills, to the north by the Samguruli Range and to the west and the south by the Kolkheti Lowland.

74. Similar to the other natural features, the overburden soils occurring around Kutaisi are also distinguished by their diversity. The topsoil types developed in specific parts of the city environs depend on the prevailed geological structure, terrain, climate and vegetation cover. The major surface soil types distributed around Kutaisi comprise alluvial, subtropical podzol, yellow, carbonated humus-rich and podzol topsoils.

75. The alluvial soils are extensively distributed south and south-west of Kutaisi. The non-carbonated alluvial soils are mainly observed on the river terraces developed in the left part of the city.

76. The subtropical podzol soils are common in the upper part of Kolkheti Lowland, as well as within the hilly zone. The level of podzolization of the terrace topsoils varies depending on their age.

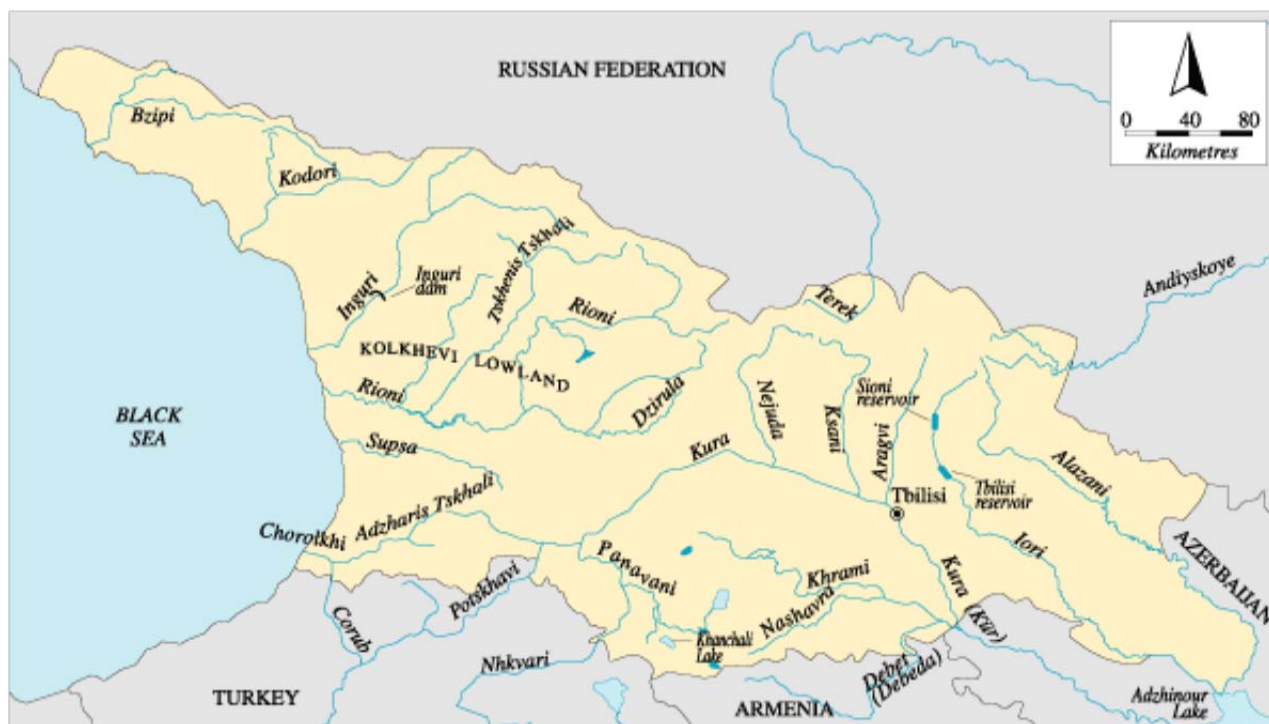
### 3. Surface water

77. The Rioni River is the largest river in the Western Caucasus and the largest tributary to the Black Sea. Rioni River is draining approximately 20% of the country. It starts from the main summit of Caucasus Mountains, at the bottom of the Mountain Fasi (2620asl). The mouth of the river is situated at Poti, where it flows into the Black Sea. The length of River Rioni is 327 km, the average slope – 7.2%. The catchment covers 13,400 km<sup>2</sup> and the average height of the watershed is 1,084 m. Main tributaries of the river Rioni are as follows:

- Jojora – length - Kvirila – length 140 km
- Khanistkali – length 57 km
- Tskhenistskali – length 176 km
- Nogela – length 59 km
- Tekhuri – length 101 km
- Tsivi – length 60 km.

78. The River Rioni is fed with water from icy mountains, snow and rain water. Snow and rain water contribute the most to its flow. The river floods mainly in spring to summer (March – end of August), with the maximal peak in May/early June as the result of snow melt and rains. The second period of flooding is the end of September to October – this is a result of heavy rains. The average flow of the Rioni in Kutaisi is 132.7 m<sup>3</sup>/sec. The project area, Kutaisi, is situated in the flood plains of Rioni River Basin. The River flows through Kutaisi town.

79. The Rioni River is polluted with industrial and municipal wastewaters. As the wastewater treatment plant, Patriketi, is not operating, all the wastewaters are discharged straight to this river. Faecal masses from Choma district are also polluting river Rioni as this district is not connected to the sewage network. The Rioni is polluted with industrial and municipal waste. The majority of the industrial sources of pollution are not operating at present, however they were polluting the river for years with industrial waste and oils. Industrial plants were not equipped in any pre-treatment facilities and they used to discharge industrial waste directly into the river. There are no recycling facilities for used oils, they are still discharged to the river. Water quality data of Rioni River are not available. Basically the water quality of Rioni River is supposed to be bad and its quality should be tested prior to use as construction water to make sure that it meets the required quality.



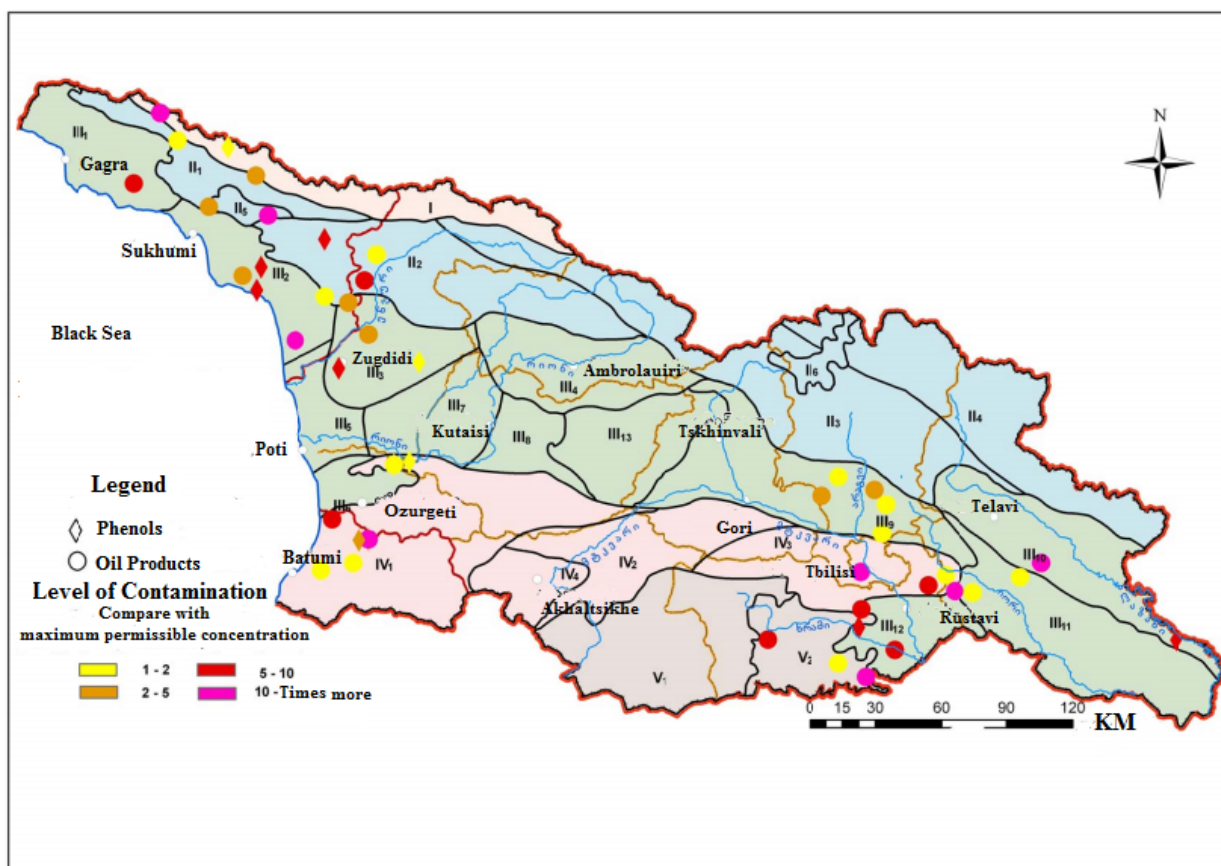
**Map 4: River Network in Western Georgia**

#### **4. Groundwater**

80. Groundwater occurring within Kutaisi mainly is of infiltration type, i.e. the rainfall water leaking into the ground down to the impervious layers. Such water moves along the impervious layers and often is released out of surface in a form of springs. The depth of aquifers from the ground surface mainly varies in a range of 2-10 m. In addition the area hosts the juvenile (magmatic) waters.

81. According to the hydrogeological zoning of Georgia, Kutaisi is included into Tskaltubo porous, fractured, fractured-karstic and karstic artesian basin occupying its east part within the basin feed limits. Based on the Hydrogeological Zoning Layout of Georgia, with respect to the natural groundwater patterns, the area belongs to the annual feed type, abundant feed subtype and drained regional class.

82. The major water extraction facilities providing water supply of Kutaisi include Parskanakanebi, Mukhiani-Kachara and Kopitnari well fields located at the east part of Kol-kheti Lowland, on the Rioni-Gubistskali interfluvial plain.

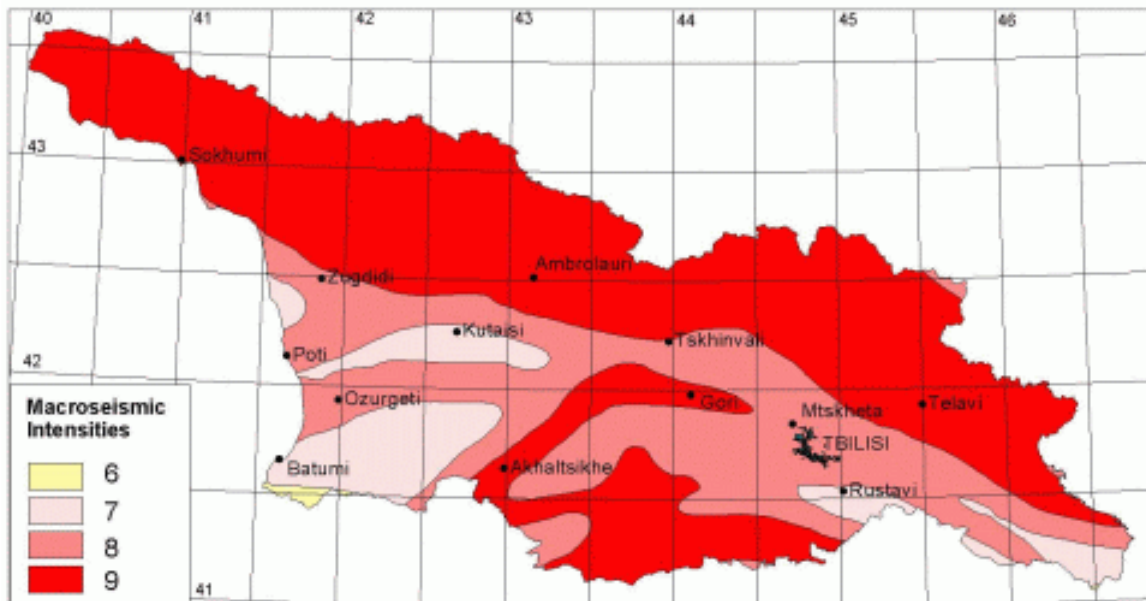


**Map 5: Hydro-geological Zones**

## 5. Geology/Seismology

83. According to geotectonical zoning, Kutaisi area belongs to the west molasses depression (Rioni Intermontane Trough) of the Transcaucasian Intermontane Lowland. The overburden mainly consists of the Neogene-Quaternary molassas deposits overlaying the slightly dislocated Cretaceous and Paleocene strata. Within the study region, the Neogene is represented by 4 horizons: Loamy deposits horizon (sandstones, clays, marls), Chockrak horizon (conglomerates, sandstones, limestones and marls), Karagan horizon (sandstones, marls and limestones) and Sarmatian horizon (clays, sandstones). The Quaternary deposits are extensively distributed within Rioni River basin, where the recent deposits of the lower and upper Quaternary period are identified. The lithological structure of the early and late Quaternary alluvial deposits comprise the pebbles and cobbles with pebble-sandy, sandy, clayey and loamy filler. The recent late Quaternary elluvial-delluvial deposits overlay the pre-Quaternary deposits, which in turn as a rule are built by clays and loams along with the rubble. The thicknesses of such elluvial-delluvial formations vary in the range from 1m to 20m with maximum reached at the zone of development of the clay-marl and sandstone deposits. Thickness of the Holocene layer is 40-50 m generally including the alluvial, alluvial-marine and biogenic deposits.

84. The area is mainly covered by alluvial deposits lithologically represented by coarse grained soils and sandy and loamy-clayey material.



**Map 5: Seismic Zones of Georgia**

85. Soil. Most of the underlying sediments are covered by top soil. Top soil means the upper part of the earth cover (depth 0.3 – 0.5m). It is aerated and contains roots. The top soil is underlain by alluvial clay and sand deposits.

## **6. Flora**

86. Kutaisi is located in the east botanical region of Kolkheti Lowland. In the past Kutaisi environs, as well as the largest part of Imereti Region was covered with forests. Up to the middle 19th century, when an inexorable tree felling commenced, a thick forest was growing along Kutaisi-Tskaltubo motor road.

87. Currently the plains and hilly zones surrounding the city mainly are completely forestless and occupied by agricultural lots. However some forest fragments still have been maintained within the city boundaries and at its approaches. From these, the major one is Sagoria Forest expanded over 480 Ha, where the dominating tree species is an oak.

88. The secondary forests have been occasionally developed after felling the relict forests east and north of Kutaisi, including the forest growing at the left bank of Tskaltsitela River, near village of Godogani where the major tree species comprise oak, hornbeam, black locust (*Robinia pseudoacacia*), etc.

## **7. Protected Areas**

89. The Project impact zone does not intervene into any protected area. The closest protected areas are Ajameti and Sataplia State Reserves, which are respectively 18-20 km and 12-15 km apart from the Project area.

## **8. Fauna**

90. For today the areas of Kutaisi and its environs have extensively been reclaimed and the densely populated settlements have been established thus significantly restricting the wildlife ranges and minimizing the number of wild animals. However, it should be noted

that in the past these areas were deemed to provide the best hunting sites. The following wildlife species occur in the areas adjacent to city:

- Rodents: mouse, hare, squirrel, etc. From Chiroptera species: bats, etc.;
- Insectivores: hedgehog, Colchis mole, etc;
- Birds: frequently occur lark, crow, rook, owl, oystercatcher, sparrow, cuckoo, starling, blackbird;
- Reptiles: lizard, grass snake, whip snake, rat snake and numerous tortoise species;
- Amphibians: common toad, green toad, marsh frog, tree frog, etc.;
- Invertebrates: insects, locust, flies, butterflies, beetles, etc.

91. Due to the heavy human impact lasting for decades, the area is very poor with respect to fauna diversity and occurrence. Only the species characteristic to urban settlements were recorded during audit conducted around the area.

## **9. Economic Development: (e.g.)**

### **a. Industries**

92. Assuming its production potential, Kutaisi is the second industrial city in Georgia after Tbilisi. The large and small scale businesses operating in the city provide significant contribution to economical development of the country. The major industrial sectors include electric power engineering, mechanical engineering, chemical industry, consumer goods industry, food industry, wood processing industry, production of non-metal minerals, etc. Due to the known events developed during the last 10-15 years, the most of city's large production facilities stopped. However, in the recent year such trend has been reversing that is evident by opening of the new small scale businesses.

### **b. Infrastructure facilities**

93. *Urban Services.* UWSCG provides water supply and sewerage services in the town. Well fields are the main source of water supply. It is estimated that some 70% of the inhabitants of Kutaisi are connected to the wastewater network. While this connection rate is higher than in many towns and cities in Georgia it still means that a significant number of people have to use sanitation methods. Some of the unconnected areas are the relatively sparsely populated steep areas in the higher parts of the city where the topography would make it difficult and expensive to provide sewerage. There is no wastewater treatment facility; the collected wastewater is disposed into River Rioni without any treatment. Storm water drainage is available in part of the town. Solid waste management system is not well developed; waste is collected and disposed in low-lying areas.

### **c. Transportation**

94. Kutaisi is a transportation hub. It is located at the junction of the dense railway and road conduits. The city is connected to the main Georgian railway by two independent tracks constructed from Rioni and Brotseula (each of approximately 8 km length). These routes connect Kutaisi to all industrial centres and important economical regions of Georgia. Specifically the city is crossed by so called "Georgian Military Road" connecting the east and west parts of the country. Kutaisi has the international (in Kopitnari) and local (in Vehicles Factory Settlement) airports. Kopitnari Airport can serve as a backup for Tbilisi International Airport. The motor roads connect Kutaisi with north (Svaneti, Lechkhumi, Racha) and south (through Zekari pass) regions of Georgia. The total length of city road network is 312 km.

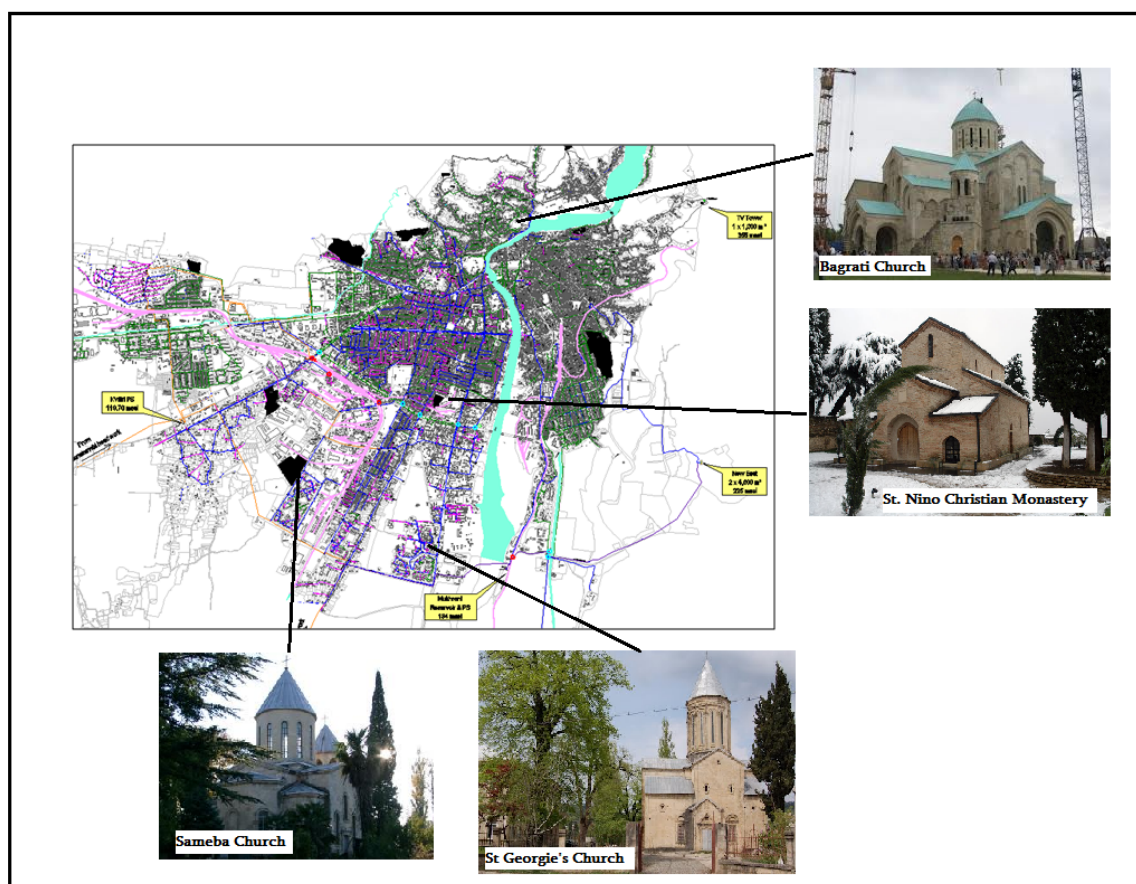
#### d. Electric Power Sources

95. Kutaisi and its environs provide favourable conditions for developing the large scale power generation projects. At present two medium hydro power plants (Rioni HPP and Gumati HPP) operate in the city. Construction of the new Namakhvani HPP with designed installed capacity of 450 MW and the estimated investment cost of 800 mln US dollars is planned within several tens kilometres from Kutaisi in the close future.

#### e. Mineral Resources and Tourism Facilities

96. *Mineral Resources.* The major natural mineral resources available near Kutaisi are provided from the limestone, spongolite and chalcedony deposits located north-east of the city. In addition there are many Cretaceous basalt outcrops, as well as the agate, quartz sand and sandstone deposits. Also, the pottery clay deposit is located at the right bank of Rioni River, at the so called “Gora” site. Other important minerals are available at Gelati coal, Gumbrini bentonite clay, marvel, Eklari limestone and other deposits. The fireproof clay deposits have been discovered near Rion-Sormoni and Jvarisa. Such clays can withstand the temperatures up to 1500-1700 degrees.

97. *Tourism.* Kutaisi and its surroundings have a high tourism development potential. The area is rich with historical and architectural monuments, e.g. Bagrati Church, Gelati and Motsameta Monasteries, Geguti Palace, Sataplia and Navenakhevi Grottos, etc. However, it should be noted that the local tourism infrastructure is weakly developed. Implementation of this Project will positively contribute to the development of the tourism industry. The following figure represents main historical monuments that are located at the vicinities of the project area



**Map 6: Historical Monuments that are located at the vicinities of the project area**

## **10. Social and Cultural Resources:**

### **a. Population and Communities (e.g. numbers, locations, composition, employment)**

98. According to 2002 census Kutaisi population amounted to 185,965 that grew to 196,500 based on the current data. Number of households (families) is 5,748. The major ethnical minorities are Russians and Ossetians composing 2% of total population. There are several compact settlements housing more than 10,000 internally displaced persons (IDPs) who may be deemed as the permanent city residents. Such settlements occupy hotel Tbilisi, kindergarten Imereti, Gumati public boarding school, hotel Zeskho, etc. The table below shows population dynamics for Kutaisi and Imereti Region during 2003-2013.

	2003	2004	2005	2006	2007	2008	2009	2010	2011	2012	2013
Imereti	694.9	690.2	689.0	700.1	697.6	694.2	693.5	700.4	704.5	707.5	703.9
Kutaisi	184.7	183.8	184.5	190.1	189.7	188.6	188.6	192.5	194.7	196.8	196.5

### **b. Healthcare Facilities**

99. The city has well-developed network of the outpatient and inpatient healthcare facilities of both general and specialist profiles. The ambulatory network comprises 5 adults and 4 children polyclinics. The inpatient healthcare facilities include the Regional Clinical Hospital, O. Chkhobadze Medical and Social Rehabilitation Centre, Imereti Regional Centre for Infectious Pathologies, Rehabilitation Care Hospital, City Church Hospital, Church-Run Hospital, Kutaisi Second Maternity Hospital, Obstetrics and Gynaecology Hospital, Regional Oncology Centre.

100. From 2005 the city is provided with free-of-charge ambulance service ("03").

101. The city has the technical and professional base for providing healthcare services, which are made available through the State run programs or under the applicable charges.

### **c. Education Facilities**

102. Kutaisi always was important contributor to development of the Georgian national culture. Currently several theatres operate in the city. Kutaisi has rich scientific potential, including institutions of the Georgian Academy of Science, as well as three universities, one library and 6 museums. There are 45 public schools in the city.

### **d. Socio-Economic Conditions**

103. The total housing stock of Kutaisi is around 61,000. One third of this stock comprises detached (single-family) houses, while the remaining portion consists of multi-storey apartment blocks. The multi-storey buildings are in poor condition and require repair. Detached houses are in a better state and mainly have small yards.

104. The average household size is estimated as follows:

- Detached houses – 3.77 members;
- Apartment blocks – 2.66 members.

## ANTICIPATED ENVIRONMENTAL IMPACTS AND MITIGATION MEASURES

### 1. Summary of Activities and Anticipated Impacts

105. This paragraph provides a brief description of anticipated site-specific impacts related to the construction phase of the sub-project "Improvement of Kutaisi Water Supply system".

#	Construction Phase. Potential Impacts During Construction Works	Risk	Sites
1	Dust, Noise, Vibration	High Risk	<p>During excavation of water pipe trenches, particularly in the densely populated parts of the city.</p> <p>During transportation of loose materials (cement, sand) during construction of service reservoirs, pumping stations and collector reservoirs.</p> <p>During construction of Kvitiri collector reservoirs and rehabilitation of the pumping stations, since the worksites are located within the densely populated district.</p>
2	Pollution of surface water during construction and rehabilitation works	Low Risk	No Project site is located in proximity to River Rioni bank. Installation of the new pipes is planned only at the one 200-250 section along David and Konstantine Mkheidze street.
3	Impacts on Archaeological Sites	Low Risk	<p>Despite Kutaisi and its surrounds are rich with historical sites no damage to the cultural heritage and archaeological sites shall be expected. The Project scope envisages replacement of the existing pipes only at the sites, which have already been subjected to excavation.</p> <p>In addition, construction of a new and rehabilitation of the existing infrastructures will be conducted at the sites, which have already experienced extensive human impacts.</p>
4	Impacts on traffic	Low Risk	Kutaisi is characterized with busy traffic that will be significantly hindered due to temporary occupation of the carriageway during construction works within the city will significantly impede the traffic. Even some narrow streets may be fully closed to traffic for certain time during rehabilitation works.
5	Landslides, slumps, slips and other mass movements.	Moderate Risk	No large scale earthworks are scoped under the Project. Despite this, assuming hilly terrain and dense population of Kutaisi, the landslide processes may be provoked during rehabilitation works at some sites with the high gradients.

#	Construction Phase. Potential Impacts During Construction Works	Risk	Sites
6	Impacts on flora and fauna	Low Risk	All Project sites are located within the area experiencing the severe human impacts. Therefore, no influence on flora and fauna shall be expected during implementation of the Project.
7	Pollution risk for ground waters	Moderate Risk	No major spills of fuel and lubricates at construction sites due to leakages are expected. The spills, which are likely to cause ground-water contamination may occur during fueling the construction machinery at the construction sites and/or construction camps.
8	Pollution risk for air quality	Moderate Risk	Air pollution may occur in densely populated districts with very narrow streets.
9	Poaching by construction workers	Low Risk	Rioni River
10	Hazardous Construction Wastes	Low Risk	Small quantities of hazardous wastes will be generated as a result of vehicle operations and the maintenance activities.
11	Impact on existing infrastructure	Low Risk	Electric power transmission systems, existing water supply and drainage channel systems and channels
12	Poor sanitation and solid waste disposal in construction camps and work sites (sewerage, sanitation, waste management)	Low Risk	Camp will not be used as living facilities because it is expected that majority of the employees would be local persons.  The construction camp would be equipped with a bio toilet and other necessary infrastructure.
13	Construction Related Impacts at the Quarrying Sites	Moderate Risk	The exploration of the borrow pits should be conducted by the licensed companies or the Contractor has to obtain its own license. However, potential impact of the increased quarrying activities on river bed and flood-plain landscape, ichthyofauna and ground-water should be considered.

## 2. Air Quality

### a. Noise and Dust Caused by Construction Activities and Emissions of Harmful Substances into the Atmosphere Air

#### Construction Phase

106. Noise and emissions of harmful substances are typical impacts of construction. Air quality will be affected during construction by emissions from vessels, equipment, and land vehicles in work activities at work locations.

107. During the pipe replacement stage the rehabilitation works are to be carried out in Kutaisi streets. The noise and dust generated in course of excavating the trenches will cause nuisance of the local residents with higher impacts in the districts housed by one, two and three storey buildings. Such districts are densely inhabited and characterized by narrow streets further increasing the effects of the construction noise and dust impacts.

108. Similar concerns apply to Mukhrani pumping station located within the densely populated district, where construction of the new small capacity collector reservoir and rehabilitation of the existing pumping units are planned. Noise and dust generation shall be expected at this facility during excavation works (for construction of the collector reservoir) that will have negative impact on the local residents.

109. As for other facilities (at New East Reservoir, Parskanakanebi collector reservoir, TV Tower Reservoir and Kvitiri pumping station), the noise and dust generated during construction/rehabilitation works will not affect the population since these facilities are located sufficiently far (from 500 m to several kilometres) from the settlements.

110. Construction of the New East Reservoir and Mukhrani and Parskanakanebi collector reservoirs will inevitably involve transportation of construction materials. This can cause a number of impacts on local population.

### **Mitigation Measures**

111. These impacts can be reduced by a variety of measures, many of which are common in most urban construction. These include:

- Require adherence to engine maintenance schedules and standards to reduce air pollution.
- Use of defined, well planned haulage routes and reductions in vehicle speed where required;
- Periodically water down temporary roads on site;
- Cover trucks carrying cement, gravel, sand or other loose materials;
- Wet or cover trucks carrying stone/ sand/ gravel;
- Haul materials to and from the site in off peak traffic hours;
- Halting work during excessive winds.
- Immediately replacing defective equipment and removing it from the work site
- No truck movements in inhabited areas between 22:00 and 6:00.

### **Operation Phase**

112. No permanent dust emission sources will exist during operation phase. It is expected that in small quantities dust will be generated only during maintenance works.

113. Kvitiri and Mukhrani pumping stations will act as the permanent noise pollution sources. The nearest residential building is detached from Kvitiri pumping station on 500 m, and thus the noise generated by its equipment will have no impact on the population. Certain impact shall be expected during operation phase of Mukhrani pumping station since this facility is located within the densely populated district.

### **Mitigation Measures**

114. Mukhrani pumping station is surrounded by one and two storey houses with heights not exceeding 7-8 meters. As elsewhere in Kutaisi, the yards around such houses are encircled by concrete and wood fences inherently providing good barrier for restricting

noise level. If necessary (subject to excessive noise levels confirmed by appropriate measurements) the concrete barrier will be constructed around the pumping station.

115. The standard approaches shall be employed to reduce the dust and noise pollutions during maintenance works as follows:

- Periodically water down temporary roads on site;
- Immediately replacing defective equipment and removing it from the work site
- No truck movements in inhabited areas between 22:00 and 6:00.

### **3. Water Quality**

#### **a. Contamination of Surface Water**

##### **Operation Phase**

116. During implementation of the Project the risks of surface water contamination are very low. No Project site is located in proximity to River Rioni bank. Installation of the new pipes is planned only at the one 200-250 section along David and Konstantine Mkheidze street.

117. Notwithstanding the above, the surface water may be contaminated due to improper placement of the excavated soil, poor management of construction camps, improper storage of construction materials and leakage of fuel and lubricates from construction machinery.

##### **Mitigation Measures**

118. The following mitigation measures shall be implemented despite low risks of surface water contamination:

- Where works are in progress, erosion control and sedimentation facilities including sediment traps and straw bale barriers or combinations thereof will remain in place;
- Lubricants, fuels and other hydrocarbons will be stored at least 100m away from water bodies.
- Topsoil stripped material shall not be stored where natural drainage will be disrupted.
- Solid wastes will be disposed of properly (not dumped in streams).
- Guidelines will be established to minimize the wastage of water during construction operations and at campsites.
- During construction, machinery and transport will be used by the contractor, both have potential of causing contamination to under ground and above ground water assets. There is need to compile temporary drainage management plan before commencement of works.
- Proper installation of temporary drainage and erosion control before works within 50m of water bodies should be done (along David and Konstantine Mkheidze street).

##### **Operation Phase**

119. Contamination of surface water during operation phase is not expected except very low risks of such contamination during performance of planned or necessary maintenance works.

## **b. Underground Water**

120. Potential impact arises from implementation and maintenance of contractors' yard, transport, maintenance of vehicles and handling and storage of lubricants and fuel. The required provisions for contractor's yard are described in the chapter on impacts and mitigation measures concerning quality of soils.

121. Basically, the construction of the water network during construction and operation has no impact on the ground water.

122. The replacement of an old, depleted network with new pipes will reduce the abstraction at the source as the leakage rate will considerably improve.

## **4. Soils Quality and Topsoil Management**

123. During the construction, impacts soils are mainly due to earthworks and the operation of the contractor's yard.

124. The works for the transmission mains comprise material excavation, pipe laying and backfill of material including compaction. Material will be stored temporary alongside the trench and refilled after pipe lying. Therefore impacts associated with earthworks for trench laying are of temporary nature. Excavated soil will be placed alongside the trench, and the pipes will be placed in the trench manually. A sand layer of 30 cm thickness will be laid on top of the pipe, after which the trench will be refilled with excavated material and compacted manually. The excavation is expected to generate surplus material. Surplus material will be used as embankment fill as far as possible.

125. Construction of the New East Reservoir, and two new collector reservoirs at Mukhrani and Partskanakanebi, as well as extension of the existing TV Tower Reservoir and trenching works conducted at certain sites may lead to disturbance or loss of topsoil. Therefore the Contractor shall implement the following measures:

- The top soil of about 1 ft depth (0.3 m) shall be removed and stored separately during excavation work, and after the construction of the main trunk the same soil shall be replaced on the top, in unpaved areas;
- Subject to advance consent of local self-governance authorities, the excess topsoil remained after construction of the New East Reservoir, two new collector reservoirs at Mukhrani and Partskanakanebi, and extension of the existing TV Tower Reservoir will be used at other Project sites or handed over to the appropriate authorities.

## **Mitigation Measures**

126. The following practices will be adopted to minimize the risk of soil contamination and topsoil loss:

- The contractors will be required to instruct and train their workforce in the storage and handling of materials and chemicals that can potentially cause soil contamination.
- Solid waste generated during construction and at campsites will be properly treated and safely disposed of only in demarcated waste disposal sites.
- Construction chemicals will be managed properly
- Clearly labelling all dangerous products,
- Fuel tanks (diesel or oil) should be placed in a concrete pool which its perimeter walls will be at least 1.0 m high with the concrete or plastered masonry wall,

- A proper floor drain should be installed on the slab of the concrete pool for safely discharging the leakages.

## **Operation Phase**

127. During operation phase, the soil may be contaminated due to water leakage from the damage pipe. In case such damage is not detected in a due time, the area may be "bogged".

128. Soil contamination may also occur during performance of the planned or emergency repair works.

## **Mitigation Measures**

129. Water pressure in the pipelines shall be continuously monitored during entire operation phase. In addition, the relevant mitigation measures shall be implemented during maintenance works.

## **5. Biological Environment**

### **a. Impacts and Mitigation Measures during Construction**

130. The impacts on flora and fauna during implementation of contractor's yard will be minimised during site selection and installation.

131. In Kutaisi, the water supply pipes will be mainly laid into city streets. The impact on the biological environment will therefore only be minor. The required width for the construction and the deposition of excavated material is approximately 5 m.

132. Area of potential influence of construction site of New East Reservoir comprises a small Kokhetian forest with some old and rare trees that are endemic to the Caucasian region (*Zelkova caprinifolia*) and Elm tree. By preparing the design documents the old trees have already been taken into consideration and the reservoirs were shifted to the open space land, adjacent to the forest, as far as technically feasible.

133. In order to avoid any damage to the valuable old trees the following mitigation measures are to be implemented during construction stage:

- The old trees to be protected shall be marked.
- A vegetation protection fence will be installed during construction stage in order to protect the valuable trees and
- access road to construction site shall be shifted as far away from the old trees to be protected, as it is technically feasible

134. The following measures need to be implemented to avoid any impacts on flora and fauna:

- Avoid tree cutting
- In unavoidable cases, plant four trees of same species for each tree that is cut for construction
- The trench shall not be kept open in the night/after working hours. This will avoid any safety risk to people, domesticated, stray or wild animals.

#### **a. Impacts during Construction**

135. The rehabilitation of the water network will be mainly conducted along existing roads in the town. Although work will not require land acquisition it could still have economic impacts, if the presence of trenches, excavated material and workers discourage customers from visiting shops and other businesses, which lose income as a result. These losses however will be short in duration. Implementation of the following best construction measures will reduce the inconvenience and disturbance:

- Informing all residents and businesses about the nature and duration of any work well in advance so that they can make necessary preparations if necessary;
- Providing wooden walkways/planks across trenches for pedestrians and metal sheets where vehicle access is required
- Increasing workforce to complete the work in minimum time in these stretches
- Initial situation of private properties has to be re-established after construction

136. Another aspect of the work that has economic implications is the transportation of material to the site and surplus soil from the site to locations where it can be put to beneficial use as recommended. There will be truck movements carrying material. Although this is not significant, considering the narrow roads, it could disrupt traffic in the Town. Dust generated during the transport may also impede the commercial and trade activities, which are predominantly located along the main roads. The transportation of material/waste shall be implemented by the Civil Contractor in liaison with the town authorities, and the following additional precautions should be adopted to avoid effects on traffic:

- Plan transportation routes in consultation with Municipality and Police
- Schedule transportation activities by avoiding peak traffic periods.
- Use tarpaulins to cover loose material that is transported to and from the site by truck
- Control dust generation while unloading the loose material (particularly aggregate and sand) at the site by sprinkling water/unloading inside a barricaded area
- Clean wheels and undercarriage of haul trucks prior to leaving construction site

#### **b. Impacts during Operation**

137. As the operation and maintenance activities would be conducted within the existing facilities no impact is envisaged on economic resources. Repairs and leaks of the water supply pipes will be minor and localized. In fact, the improvements to the water supply system will bring various benefits. Availability of good infrastructure facilities will add to the quality of life, and there will be more people interested to live and visit, which will bring new investments and boost economic development.

### **6. Hazardous Construction Wastes**

138. Small quantities of hazardous wastes will be generated as a result of vehicle operations and the maintenance activities.

#### **Mitigation Measures**

139. There are no specific hazardous waste treatment facilities in Georgia, so the common construction practice accepted by the authorities is to dispose of these types of wastes at the municipal landfills. However, prior to disposal appropriate consultation and agreement of MENRP is required, and controlling will be required to obtain the necessary

approvals. To ensure good practice they will also be required to store, transport and deposit all hazardous materials in secure watertight containers.

#### **a. Other Wastes from Construction Activities**

##### **Municipal Waste**

140. Municipal waste may be generated on the Storage area. Mainly this is rubbish, plastic or glass bottles, glasses, waste food, etc. and a stationary waste. Waste should be collected both by the specially assigned personnel and the workshop workers on the area. The waste is placed into 0.24m<sup>3</sup> plastic containers and further a local Sanitary Service takes it to landfills. The following should be taken into account:

- Generation of dust should be avoided;
- Plastic containers should be closed to prevent spread of the smell and also to avoid contact of rodents and insects with the waste.

141. The personnel involved in the handling of hazardous and non-hazardous waste will undergo specific training in:

- Waste handling
- Waste treatment; and
- Waste storage.

142. Burning of waste on any construction site is forbidden with the exception of stub and small branches from felled trees and bushes, which is better to be burned in order to avoid pest dissemination.

##### **Medical waste**

143. Medical waste is generated in the Medical Care and Control Point and belongs to hazardous waste category. This waste is collected in special plastic boxes and is transferred to a contractor for farther incineration. It is recommended that the medical waste is directly transferred to a contractor from the place of its consolidation. While disposal of the medical waste the following requirements are to meet:

- Medical waste must be disposed in special plastic boxes, which can be hermetically closed.
- Medical waste for farther incineration should be transferred to a certified contractor (Batumi municipal waste operator).

##### **Non hazardous construction waste**

144. Non hazardous construction waste may be generated on the Storage and construction area and will be collected by contractors workers. Waste disposed first on the sites of origin, and then moved to construction waste temporary storage facility before transferred to a contractor.

145. While disposal construction wastes both on the sites and at the temporary storage facilities the following requirements are to meet:

- Place of disposal of the waste concerned must be enclosed.
- The waste must not have access to drainage water.
- Waste must be immediately removed from the working sites.
- Waste must be placed in secondary protective basins.
- This waste can be transferred only to a certified contractor.

## **b. Impacts on Archaeological Sites**

146. Land clearance works, grading and excavations are associated with the risks of damaging underground archaeological remnants. However in the case of the proposed Project no archaeological monuments are expected to be touched during construction phase since pipes will run along and inside existing roads as far as technically feasible. There is a low probability for chance finds of archaeological objects. However, still there are several sites where such objects may be discovered during conduct of earthworks (for construction of the New East Reservoir, Partskanakebi and Mukhrani collector reservoirs, and extension of TV Tower Reservoir). Therefore, special care should be taken not only at the new construction sites, but also at construction camps and storage areas.

### **Mitigation Measures**

147. To avoid this risk, preliminary preventive studies and archaeological supervision during the earth-works is necessary. Supervisory procedures and all other necessary measures should be agreed with the Ministry of Culture when obtaining the construction permit, in accordance with the rules of the permit issuance. According to the article 14 of the Law on Cultural Heritage, Permit on conducting quarrying activities in Georgia, as well as construction of an object of a special importance as it may be defined under the legislation of Georgia, is issued by a competent authority based on the positive decision of the Ministry of Culture, Monument Protection of Georgia. The basis for the conclusion is the archaeological research of the proper territory to be carried out by the entity wishing to accomplish the ground works. The entity wishing to do the earth-works is obliged to submit the Ministry the documentation about the archaeological research of the territory in question. The preliminary research should include field-research and laboratory works.

148. Therefore steps should be taken minimize the risk. This should involve:

- Contractor should put in place a protocol for conducting any excavation work, to ensure that any chance finds are recognized and measures are taken to ensure they are protected and conserved. This should involve:
- Having excavation observed by a person with archaeological field training. Supervisory procedures and any other necessary measures shall be agreed with the Ministry of Culture;
- Stopping work immediately to allow further investigation if any finds are suspected;
- Calling in the state archaeological authority if a find is suspected, and taking any action they require ensuring its removal or protection in situ.

149. At the construction stage archaeological monitoring should be ensured by the contractor under the supervision of the Ministry of Culture, Monument Protection of Georgia. The budget necessary for the archaeological supervision and other agreed works should be fixed under the construction works appraisal.

## **7. Socio-Cultural Resources**

### **a. Impacts during Construction**

150. There are various social-cultural resources (such as schools, hospitals, churches, university) in the town. The construction impact will include noise and dust, and interrupted access due to movement of heavy vehicles transporting material and waste. Mitigation will therefore be needed to protect socio-cultural resources and to enable usage by local people and visitors to continue throughout the construction work. This will be achieved through several of the measures recommended above (under the impacts on air quality), including:

- Limiting dust by removing waste soil quickly; by covering and watering stockpiles, and covering soil with tarpaulins when carried on trucks
- Providing wooden walkways planks across trenches for pedestrians and metal sheets where vehicle access is required
- Increasing the workforce in to complete the work quickly

151. There is invariably of safety risks when substantial construction such as this is conducted in an urban area, and precautions will thus be needed to ensure the safety of both workers and citizens. The Contractor will be required to formulate and implement health and safety measures at construction sites, which should include such measures as:

- Following standard and safe procedures for all activities – such as provision of shoring in deeper trenches (> 2 m)
- Excluding public from the site – enclosing the construction area and provide warning and sign boards, and security personnel
- Providing adequate lighting to avoid accidents
- Ensuring that all workers are provided with and use appropriate Personal Protective Equipment - helmets, hand gloves, boots, masks, safety belts (while working at heights etc.)
- Maintaining accidents records and report regularly
- Traffic control. Irregular control of trucks by local police (radar control, safety control). Speed limits to be introduced within construction areas and on access roads.
- Yellow / orange warning tape to protect workers and pedestrians from falling into building pits, to prevent pedestrians from entering the construction site. Warning signs to prevent accidents within the construction site and on access roads.

152. *Economic Benefits.* There could be some short-term socio-economic benefits from the construction work if local people gain employment in the workforce. To ensure that these benefits are directed to local people, the Contractor should be required to employ as much of his labour force as possible from the local communities in the vicinity of construction sites. Drawing of majority of workforce from local communities will avoid problems that can occur if workers are imported, including social conflicts and issues of health and sanitation due to labour camps. If temporary labour camps are to be provided, Contractor should ensure that they are maintained well with proper water supply and sanitation facilities. In unavoidable case of sourcing labour from other areas, provide adequate housing facilities so that there are no impacts and conflict with the local people. Following measures shall be followed:

- Establish temporary labour camps in consultation with the local authority
- Shall be located away from water bodies
- No clearance of trees vegetation shall be allowed for establishment of camp
- Provide all basic amenities (water supply and sanitation, waste collection & disposal, first aid facilities, etc.)
- Contractor shall provide fire wood and no worker shall be allowed to cut any tree
- Ensure regular and clean maintenance of the camp

## **b. Impacts during Operation**

153. As the operation and maintenance activities would be conducted within the facilities, no impacts on socio-cultural resources envisaged.

154. Regular water quality surveillance program shall be implemented to avoid any public health risk as detailed below:

- Conduct regular water quality monitoring at well fields; results of monitoring conducted at this feasibility stage can be used as base values to study the change in the water quality in future
- Develop & implement a water quality monitoring program for distribution system according to the Georgian Law<sup>2</sup>

155. The improved water supply system will bring numerous benefits when it is operated. The main beneficiaries will be the citizens of Kutaisi, who will be provided with a constant supply of better quality water, which serves a greater proportion of the population, including urban poor. This will improve the quality of life of people as well as raise standards of both individual and public health. This should lead to economic gains as people will be away from work less and will spend less on healthcare, so their incomes should increase. Improvement in infrastructure will bring more economic opportunities.

156. The improved and expanded water supply system would require additional workforce – both skilled and unskilled, for operation and maintenance, and therefore creates new employment opportunities for local people.

## **8. Noise and Vibration**

### **a. Impacts during Construction**

157. Construction activities are likely to generate noise and vibration from usage of equipment and haulage of construction materials/waste. This project however does not involve high noise/vibration generating activities like pile-driving or rock cutting. Appropriate personal protection equipment needs to be provided for workers at the site. Haulage of materials/waste, and operation of backhoe (if used for transmission main trench excavation in the town), will also generate noise, but will be limited in duration and require no special measures. During the construction period, the Georgian noise quality standards should be adhered to by the Contractor. This specifies that noise level should not exceed 70 dBA (with indicative level of 55 dBA) from 7 am to 11 pm and 60 dBA (with indicative level of 55 dBA) from 11 pm to 7 am. Sensitivity to noise increases during the night hours in residential neighbourhoods. Following measures therefore shall be implemented:

- Provide prior information to the local people about the work
- No construction of activities shall be conducted in the night
- Provide personal protection equipment like ear plugs to the workers at the noisy working site
- Sound barriers should be erected at schools and hospitals if the distance to the construction site is 50 m or less than 50 m

158. Another important activity is haulage of construction material and waste to and from site. Roads in the town are narrow and not in good condition. Following measures shall be included to avoid nuisance due to haulage of material and waste.

- Schedule material and waste haulage activities in consultation with local authorities
- No night time haulage activity; limit to day time off peak hours
- Educate drivers: limit speed between 20-25 km/h and avoid use of horn in the town

---

<sup>2</sup> Schedule N7 of Technical Regulation on Drinking Water issued in 2007 by Ministry of Labor, Health and Social Welfare, Government of Georgia

- Earmark parking place for construction equipment and vehicles when idling; no parking shall be allowed on the roads, that may disturb the traffic movement

159. As for the construction vibration is considered, none of the activities in the subproject has potential to generate significant vibration, and there are no sensitive structures in the proximity of the site. Therefore there are no likely impacts.

#### **b. Impacts during Operation**

160. There are no sources of noise or vibration from the operation activity of the new water supply system.

### **9. Construction Camps**

161. The establishment of contractor's work camp may cause adverse impacts if various aspects such as liquid and solid waste management, equipment maintenance, materials' storage, and provision of safe drinking water are not addressed properly. The site for the work yard will be selected by the contractor in agreement with the Municipality, UWSCG and the supervisor.

162. To ensure that potentially resulting impacts are kept at a minimum the contractor will be required to prepare the following plans or method statements:

- Layout plan of the work camp including a description of all precautionary measures proposed to avoid potential adverse impacts on the receiving environment (surface and ground water, soils, ambient air, human settlement);
- Sewage management plan for provision of sanitary latrines and proper sewage collection and disposal system to prevent pollution of watercourses or groundwater;
- Waste management plan covering the provision of garbage bins, regular collection and disposal in a hygienic manner, as well as proposed disposal sites for various types of wastes (e.g., domestic waste, used tires, etc.) consistent with applicable national regulations; and
- Description and layout of equipment maintenance areas and lubricant and fuel storage facilities including distance from Rioni River. Storage facilities for fuels and chemicals will be located at a safe distance to the river. Such facilities will be bounded and provided with impermeable lining to contain spillage and prevent soil and water contamination.
- These plans will be approved by the Engineer prior to beginning of construction activities.

163. Prior to establishment of the work camp(s) the contractor shall conduct consultations with local authorities to identify sources of potable water for the workforce that will not compete with the needs of the local population. Potable water for the workforce shall comply with the national quality standards. Construction water should be sourced from the local water supply.

### **10. Construction Related Impacts at the Quarrying Sites**

164. The quarries and borrow pits will be finally selected by the contractor. The exploration of the borrow pits should be conducted by the licensed companies or the Contractor has to obtain its own license. However, potential impact of the increased quarrying activities on river bed and floodplain landscape, ichthyofauna and groundwater should be considered.

## **Mitigation Measures**

165. The exploration of the borrow pits should be conducted by the licensed companies. In case if the constructing company intend to perform quarrying activities, the company has to obtain related license. Potential impact of the increased quarrying activities on ichthyofauna, groundwater and landscape should be considered anyway. Validity of licenses for the abovementioned companies is a main mechanism to guarantee that most of impacts related to quarrying will be mitigated. License is provided by the MENRP only on a basis of preliminary assessment (including limits and conditions for reinstatement). The Regional Services of the MENRP and Environmental Inspectorate are in charge to control compliance of the quarrying company's performance. The role of the UWSCG within this plan should be to ensure timely and permanent involvement of the MENRP in construction supervision.

166. The measures aimed on mitigation of the dust and emission impacts, as well as potential river contamination due to improper fuelling and vehicle operation should be the same as above described pollution prevention measures, but control on this sensitive site should be stricter. Contractor's environmental personnel shall pay attention to this site during monitoring.

## **11. Cumulative Impacts**

167. Project is designed to improve environmental quality and living conditions in Kutaisi through the improvement of water supply system. The potential negative impacts identified on various environmental parameters, during both construction and operation, in the previous sections of this report, are localized and temporary.

168. By nature, impacts such as on air quality and on people (due to disturbance, nuisance and safety risk of construction activity) can have cumulative impacts, as all the construction activities are conducted simultaneously. These are common impacts associated with any construction activity, and as discussed in the earlier sections, there exists proven and easy-to-implement measures to mitigate these impacts.

169. No cumulative impacts envisaged during the operation stage.

## **ANALYSIS OF ALTERNATIVES**

170. The Kutaisi water supply subproject to be financed by tranche 3 loan will comprise a second phase of the rehabilitation of the water supply system. The subproject will (i) reduce nonrevenue water losses through the replacement of old pipelines; and (ii) improve the pressure in the supply area through the construction of additional reservoir capacity and the establishment of supply and pressure zones. The subproject comprises the laying of 158 km of distribution pipes, the rehabilitation of 2 pumping stations and the construction of 9,000 m<sup>3</sup> storage volume at two locations.

171. As the works mainly comprise rehabilitation and replacement works within the existing water supply system, no major alternatives are to be investigated. Pipeline routes and reservoir locations are not changed with the exception of one new reservoir in the East of Kutaisi. The location was chosen for its elevation and the location near the Eastern parts of Kutaisi. Alternatives were limited to three hills with similar elevation; the location with available land was chosen. There are no environmental advantages and disadvantages compared with the alternative locations. Other options were limited to existing locations and concern

reservoir sizes, capacities of pumping stations and diameters of transmission and distribution lines that have no environmental impact.

## **INFORMATION DISCLOSURE, CONSULTATION, AND PARTICIPATION**

172. Most of the main stakeholders have already been identified and consulted during preparation of this IEE, and any others that are identified during project implementation will be brought into the process in the future. Stakeholders of this project include:

- People who live, and work near construction sites of facilities in Kutaisi
- UWSCG as implementing agency
- Other government regulatory institutions
- Municipality of Kutaisi
- NGOs and CBOs working in the affected communities;
- Other community representatives (prominent citizens, religious leaders, elders, women's groups);
- The beneficiary community in Kutaisi in general; and
- The ADB, as funding agency

173. Two forms of public consultation are used to discuss the project and involve the community in planning the mitigation measures and develop the Environmental Monitoring Plan. These are:

- Public meeting in Kutaisi Town to which stakeholders were invited.
- Ad hoc discussions were held on site with people and communities who could be affected by the subprojects, so that views could be expressed in a less formal setting. These were also considered in preparing the IEE.

174. Public Hearings were held in Kutaisi on 10th of May 2012 for Tranche 1 project and on 16<sup>th</sup> July 2013. The latter meeting exclusively informed about project measures to be implemented under Tranche 3. The appendix n° 1 contains a minutes of the meeting. Ten (10) local residents plus a representative of the local service centre attended the meeting. The project measures and their locations were explained. The time schedule of construction activities and construction supervision were explained. Environmental impacts were discussed. Benefits of the project for local people were presented. Opinions, ideas and suggestions of the local residents and related people were received during the meeting.

175. Consultation with affected population was undertaken

- to ensure their informed participation in the design, implementation and monitoring of the project measures and their impacts on the environment, as well as the efforts to minimize and the mitigate impact when avoidance is not possible;
- to introduce the project benefits to the local population that accrue to them as a result of project implementation;
- to incorporate all relevant views of affected people and other stakeholders into decision making, such as project design, mitigation measures, the sharing of development benefits and opportunities, and implementation issues.

176. The following topics were discussed during the meeting:

- project context and rationale
- expected start and end of the project
- benefits of the project to local population and to the country as a whole
- the environmental issues and mitigated measures related to the project

177. The population recognizes the need to accept limited nuisances as a result from the construction works, and understands that the implementation would fail without a good cooperation between the local population, the contractor and UWSCG. They are aware of the deficiencies of the present water supply situation and realize that rehabilitation works need to be carried out in order to achieve a 24 h water supply. The time schedule for the start and end of works was of particular interest to the participants. UWSCG explained that an Environmental Management Plan has been prepared that will have to be implemented by the Contractor. This plan describes mitigation measures to minimize the impacts during construction works. Findings, list of participants, key concerns, and data are provided in Annex 1 of this report.

178. This IEE Report in Georgian language will be distributed to the interested public. Report will be available for review in Tbilisi (at UWSCG Head Office), and Kutaisi (at UWSCG Service Centre and the Town Hall). It will also be disclosed to public by making it available on websites of UWSCG, MoRDI and ADB, together with the IEEs prepared for the other subprojects.



**Map 7: Kutaisi - office of the UWSCG in Gugunava Street 12**

## **GRIEVANCE REDRESS MECHANISM**

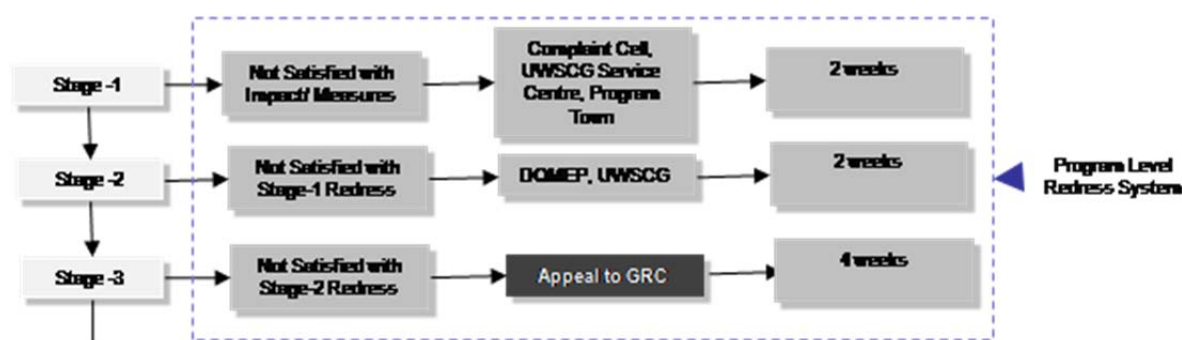
179. The contractor is obliged to implement the environmental management plan during the whole construction period and the supervising consultant will monitor these activities. The consultant will point out any deviations from the EMP and make sure that the contractor addresses all issues of the EMP in a timely and professional manner.

180. A grievance resolution mechanism will be set up to allow an AP appealing any disagreeable decision, practice or activity arising from project implementation. APs will be fully informed of their rights and of the procedures for addressing complaints whether verbally or in writing during planning and implementation of the project. Care will always be taken to prevent grievances rather than going through a redress process. This is achieved by ensuring full AP participation and consultation, and by establishing extensive communication and coordination between AP, UWSCG, and the local government. The affected population and stakeholders may send their grievances, related to the project induced environmental impacts and nuisance to UWSCG or directly to the administrative bodies responsible for the environmental protection. The MoENRP and concerned municipalities are obliged to respond on the grievances, which have been received from population or other interested parties in accordance with the Administrative Code of Georgia.

181. UWSCG on its part, in order to provide a direct channel to the affected and concerned citizens for approaching project authorities and have their grievance recorded and redressed in an appropriate time frame, will establish a Grievance Redress Mechanism. A Complaint Cell and a Grievance Redress Committee will be established for each Investment Program town at the local UWSCG service centre, which will function throughout the construction period. The procedures adopted and the responsibilities of various project agencies in grievance redress are discussed in the following paragraph. During the public consultation process, UWSCG (the IA) will inform the stakeholders about the Grievance Redress Mechanism and provide contact details of persons responsible for grievance collection and response. These details will also be made available on UWSCG website. The DREP at the head office of UWSCG will be available for the local complaint cells for establishing direct links to relevant environmental authorities.

182. The Complaint Cell at the UWSCG Service Centre in the Investment Program town will accept complaints regarding the environment safeguard issues in implementation of subprojects under the respective town. A three stage grievance redress mechanism is indicated in Fig. 2 below. The grievances received and actions taken will be included into the environmental monitoring reports submitted to ADB

Fig. 2 Grievance Redress Mechanism



- (i) Complaints received (written or oral communication) by the Complaint Cell will be registered in database system, assigning complaint number with date of receipt; informs the complainant the time frame in which the corrective action will be undertaken.
- (ii) Complaint resolution will be attempted at Kutaisi level with the involvement of Community leaders and informal mediators.
- (iii) The Complaint Cell and the Investment Program Management Office (IPMO), which is the Project Management and International Relations Department at UWSCG, will investigate the complaint to determine its validity, and assess whether the source of the problem is indeed subproject activities; if invalid, the Complaint Cell intimates the complainant and may also provide advice on the appropriate agency to be approached.
- (iv) If the complaint is valid, the Complaint Cell will check the environmental management plan (EMP) of the subproject whether this issue was identified and mitigation was suggested; if yes, the Complaint Cell and UWSCG IPMO will direct the civil works Contractor to take immediate actions as per the EMP.

- (v) If this is an unanticipated issue, the UWSCG IPMO will to identify mitigation measures and advise the civil works Contractor accordingly and a corrective action should be taken and a Corrective Action Plan CAP prepared.
- (vi) The Complaint Cell will review the civil works Contractor's response on corrective action and update the complainant within two weeks.
- (vii) If the complainant is not satisfied with the action taken by the Contractor within two weeks from the start of corrective action as directed the Complain Cell, the grievance will be directed to the Division of Resettlement and Environmental Protection (DREP) of the UWSCG.
- (viii) The DREP will review the issue with the IPMO and relevant Service Centre and may ask for additional information or conduct site visit, and will advise the IPMO and relevant Service Centre on actions to resolve the issue.
- (ix) The Service Centre will submit the interim report in a week to DREP on the status of the complaint investigation and follow-up actions, and final action taken report within two weeks of completing the action. The DREP will intimate the complainant of the same.
- (x) If the complainant is still dissatisfied with the action taken or decision, he/she may approach the Grievance Redress Committee (GRC, see below) established in the town.

183. **Grievance Redress Committee (GRC).** A GRC will be established to resolve the unresolved issues at Stage 2 and this will function throughout the construction period, and will have hearings on need-basis. GRC will have following members:

- Chairman of the GRC – Head of Department of Social Issues at Kutaisi Municipality
- UWSCG Service Centre Head  
Mikheil Tataradze  
Address: #12 Gugunava Street.  
E-mail: [Mishatataradze@yahoo.com](mailto:Mishatataradze@yahoo.com)  
Phone: + 995 597 000 700
- Designated informal leader of sub-project affected community
- Female AP
- Member of IPMO
- Local NGO representative

184. Considering the anticipated impacts, it is not expected that there is any likely issue which will remain unresolved in the Stage 3 of the process. In the unlikely event of dissatisfaction after Stage 3, the complainant can approach ADB with a complaint. ADB has in place a system under the ADB Accountability Mechanism, where people adversely affected by ADB-assisted projects can voice and find satisfactory solutions to their problems. An affected person can file a complaint (mail, facsimile, electronic mail, or by hand delivery) with the:

Complaints Receiving Officer, Accountability Mechanism  
Asian Development Bank Headquarters  
6 ADB Avenue, Mandaluyong City 1550, Philippines  
Email: [amcro@adb.org](mailto:amcro@adb.org), Fax +63-2-636-2086

185. Complaints will also be accepted by any ADB office such as a resident mission, regional office or representative office, which will forward them unopened to the CRO.

## ENVIRONMENTAL MANAGEMENT PLAN

### 1. Institutional Arrangements

186. Following agencies will be involved in implementing the Investment Program:

- (i) Ministry of Regional Development and Infrastructure (MoRDI) is the Executing Agency (EA) responsible for management, coordination and execution of all activities funded under the loan. MoRDI will have overall responsibility for compliance with loan covenants.
- (ii) United Water Supply Company of Georgia (UWSCG) is the project Implementing agency (IA), which will be responsible for administration, implementation (design, construction and operation) and all day-to-day activities under the loan. An Investment Program Management Office (IPMO) is established within the UWSCG for all Investment Program related functions. The IPMO, which is the Project Management and International Relations Department at UWSCG will coordinate implementation of subprojects across all towns, and ensure consistency of approach and performance.
- (iii) UWSCG as responsible IA for the project recruited a Supervision Consultant (SC). The national and international team of consultants will assist UWSCG as project supervision for the construction of Kutaisi WS project. The SC will also provide capacity building training to contractor staff for management and operation and maintenance for the Project. The SC will assist UWSCG in assuring that the project is implemented according to the specified standards. This SC assignment will include the supervising of the implementation of the environmental management plan.
- (iv) All mitigation measures during construction have to be implemented by the contractor that will be monitored by the supervision consultant (SC). Implementation of EMP of this project require an experienced Environmental Management Specialist (EMS), employed by the SC, to spend a total of around 9 months for project construction period, conducting routine observations and surveys, and preparing quarterly reports.

The Contractor has the following obligations.

- to employ Environmental consultant responsible for developing and implementing the construction phase EMP and for provision of corresponding information to UWSCG and SC;
  - to prepare SSEMP;
  - to develop, if required, a Spoil Disposal Plan and Construction Waste Disposal Plan agreed with the MENRP and Local government;
  - to prepare and update Construction Schedule;
  - The SSEMP implementation costs should be included into the construction budget.
- (v) ADB is the donor financing the Investment Program.

187. DC will be responsible for incorporation of mitigation measures in design and construction.

188. The environmental specialist (ES) assists and advises the Division of Resettlement and Environmental Protection (DREP) of the UWSCG in program implementation in compliance with the, ADB Safeguard Policy Statement, 2009 and National Legislation, and oversee the work of DCs and SCs in safeguard compliance. The ES will support UWSCG in preparing and submitting bi-annual reports to ADB for review.

189. Implementation of mitigation and monitoring measures during operation will be the responsibility of DREP. Government regulatory agencies such as MoENRP will also monitor

the environmental performance. In addition the Contractor should employ an environmental specialist who will ensure that the site specific EMP (SSEMP) is prepared and implemented. SSEMP should be endorsed by SC and approved by UWSCG.

### c. Costs of Environmental Management Plan

190. The Costs for Environmental Management of the project shall mainly consist of the (i) monitoring of works by the EMS who will be employed by the SC; (ii) baseline and regular parametric measurements of noise, dust and emission (water quality testing may not be needed unless water supply sources will be affected by the construction works). All of the implementation of mitigation measures shall be part of the contractual works and obligation of the Contractor.

191. The cost for the environmental management for construction period is tentatively estimated.

Table 7: Environmental management cost table

Item	Quantity <sup>3</sup>	Unit Cost	Total Cost	Remarks
Baseline Parametric Measurements	6	200 USD	1,200	To be conducted by the Contractor for noise, air emissions, dust (and water, if necessary) measurements
Monthly Parametric Measurements (at least 6 sites)	216	200 USD	43,200	Tests to be conducted by the Contractor at 6 sites x 36 months monthly monitoring
Environmental Management Specialist (SC)	9 months	2,500 USD	22,500	The costs are included in the contract signed between UWSCG and SC and no additional costs will occur.
Miscellaneous			6,690	10% for above Items
Subtotal			73,590	Total for above
Contingency			8,831	12% of Subtotal
GRAND TOTAL			82,421	For the entire construction period of 36 Months

## 2. Performance Indicators

192. Based on the identified impacts of the project the performance indicators can be established. The objective of the EMP is to eliminate, avoid, minimize and if not possible, compensate the affected entities or individuals by the project. During the initial stage of the project, the Contractor, under the supervision of the CS Consultant, should establish the baseline parameters of the work sites and make appropriate parametric measurements which shall be the basis for comparison in the entire project. This shall include physical parameters on noise, dust, air emissions (water quality if necessary) and related local community concerns. Mitigation measures shall be implemented or improved based on the level of non-conformance to the identified performance indicators. The environmental monitoring and management shall focus on the Contractor's conformance to these performance indicators throughout the entire duration of the project.

<sup>3</sup> To be established by CS Consultant and international environmental specialist.

193. In establishing the performance indicators local as well as international standards and guidelines are used as reference. In addition, local social and community concerns should also be utilized as performance indicators of the project. These performance indicators are tabulated below:

Table 8: Environmental performance indicators

Environmental Aspect	Parameter	Performance Indicator	
Air Emission <sup>4</sup>	Nitrogen (IV) Dioxide	0.2 (mg/m <sup>3</sup> ) max	0.04 (mg/m <sup>3</sup> ) Daily Average
	Sulphur Dioxide	0.5 (mg/m <sup>3</sup> ) max	0.05 (mg/m <sup>3</sup> ) Daily Average
	Carbone Monoxide	5 (mg/m <sup>3</sup> ) max	3 (mg/m <sup>3</sup> ) Daily Average
	Soot (Carbone black)	0.15 (mg/m <sup>3</sup> ) max	0.05 (mg/m <sup>3</sup> ) Daily Average
Dust	PM10 (WHO Guidelines <sup>5</sup> )	20 µg/m <sup>3</sup> annual mean	50 µg/m <sup>3</sup> 24-hour mean
Noise <sup>6</sup>	Noise Levels for residential areas at 7am – 11 pm	55 Indicative Level L <sub>a</sub> dBA	70 Maximum Admissible Level L <sub>a</sub> max dBA
	Noise Levels for residential areas at 11pm – 7am	45 Indicative Level L <sub>a</sub> dBA	60 Maximum Admissible Level L <sub>a</sub> max dBA
Social and Community Concerns <sup>7</sup>	Traffic	Number or Complaints	
	Impairment of Access	Number or Complaints	
	Public Safety	Number or Complaints	
	Disruption to Utilities	Number or Complaints	
	Curtailement of Social and Business Activities	Number or Complaints	

<sup>4</sup> Environmental Quality Norms approved by the Order #297N (16.08.2001) of the Ministry of Labour, Health and Social Protection (as amended by the Order No 38/n of the same Ministry of 24.02.2003). The quality of atmospheric air (pollution with hazardous matter) is also defined by the order of the Minister of Environment Protection and Natural Resources (#89, 23 October 2001) on approval of the rule for calculation of index of pollution of atmospheric air with hazardous pollution

<sup>5</sup> <http://www.who.int/mediacentre/factsheets/fs313/en/>

<sup>6</sup> The Georgian standards for noise control as approved by the Decree of the Minister for Health, Labour and Social Affairs (297n of August 16, 2001) upon the 'Approval of Environmental Quality Standards', which specify the tolerable and maximum admissible levels of noise for different zones

<sup>7</sup> From the EMP Table

Table 9: Environmental Impacts and Mitigation Measures

Potential Negative Impacts	Mitigation measures	Responsibility	Location	Cost
<b>Pre-Construction</b>				
Possible removal of Terrestrial habitat. Loss of the top soil	Sites rehabilitated before contractor leaves site upon completion of construction activities. Planting and stabilization of site, including replacement of any native plant species	Construction Contractor	Construction and labor camps, storage area	Part of construction cost
<b>Construction</b>				
Ambient Air and Local Dust <sup>8</sup>	<ul style="list-style-type: none"> <li>Cover or damp down by water spray on the excavated mounds of soil to control dust generation;</li> <li>Apply water prior to levelling or any other earth moving activity to keep the soil moist throughout the process;</li> <li>Bring the material (aggregate and sand) as and when required;</li> <li>Ensure speedy completion of work and proper site clearance after completion;</li> <li>Damp down unsatisfied /bad condition roads to avoid dust generation while using for transport of waste/material</li> <li>Use tarpaulins to cover loose material that is transported to and from the site by truck</li> <li>Control dust generation while unloading the loose material (particularly aggregate and sand) at the site by sprinkling water/unloading inside barricaded area</li> <li>Clean wheels and undercarriage of haul trucks prior to leaving construction site</li> <li>Don't allow access in the work area except workers to limit soil disturbance and prevent access by fencing</li> </ul>	Construction Contractor	Trenching sites  Mukhrani pumping station	Part of construction cost
	The Contractor shall coordinate with local Traffic Management Department to minimize construction traffic impact in the following topics: <ul style="list-style-type: none"> <li>Temporary parking restrictions,</li> </ul>	Construction Contractor	Along materials transportation routes	

<sup>8</sup> Environmental Quality Norms approved by the Order #297N (16.08.2001) of the Ministry of Labour, Health and Social Protection (as amended by the Order No 38/n of the same Ministry of 24.02.2003). The quality of atmospheric air (pollution with hazardous matter) is also defined by the order of the Minister of Environment Protection and Natural Resources (#89, 23 October 2001) on approval of the rule for calculation of index of pollution of atmospheric air with hazardous pollution

Potential Negative Impacts	Mitigation measures	Responsibility	Location	Cost
	<ul style="list-style-type: none"> <li>• Pedestrian and cyclist diversion routes where construction prevents access,</li> <li>• Temporary traffic signals,</li> <li>• One way scheme,</li> <li>• Maintaining local residential access at all times,</li> <li>• General traffic diversion routes where roads are closed.</li> <li>• Sound barriers should be erected at schools and hospitals if the distance to the construction site is less than 50 m</li> </ul>			
Noise Pollution <sup>9</sup>	<ul style="list-style-type: none"> <li>• Maintain machinery and vehicle silencer units to minimize noise</li> <li>• Keeps noise generating activities associated with construction activities to a minimum and within working hours.</li> <li>• Notify the residents of Kutaisi town close to the Project area prior to commencement of the construction phase.</li> <li>• Vehicles and machinery that are used intermittently should not be left idling condition for long period of time.</li> <li>• Equipment used on site will be quietest reasonably available.</li> <li>• Haul routes for construction traffic entering and leaving the site will be selected to ensure noise levels at noise sensitive receptors are kept at a minimum.</li> </ul>	Construction Contractor	Trenching sites  Mukhrani pumping station  Along materials transportation routes	Part of construction cost
Impact on surface water bodies due to construction <sup>10</sup>	<ul style="list-style-type: none"> <li>• In case of heavy rain, protect open trenches from entry of rain water by raising earthen bunds with excavated soil</li> <li>• Confine construction area including the material storage (sand and aggregate) so that runoff from upland areas will not enter the site</li> <li>• Ensure that drains are not blocked with excavated soil</li> </ul>	Construction Contractor	Construction sites on slopes, New East Reservoir.	Part of construction cost
Soil Contamination	<ul style="list-style-type: none"> <li>• The contractors will be required to instruct and train their workforce in the storage and handling of materials and chemicals that can potentially cause soil contamination.</li> <li>• Solid waste generated during construction and at campsites will be properly treated and safely disposed of only in demarcated waste</li> </ul>	Construction Contractor	Construction site  Camp	Part of construction cost

<sup>9</sup> The Georgian standards for noise control as approved by the Decree of the Minister for Health, Labour and Social Affairs (297n of August 16, 2001) upon the 'Approval of Environmental Quality Standards', which specify the tolerable and maximum admissible levels of noise for different zones

<sup>10</sup> Rules of the Protection of the Surface Waters of Georgia from Pollution

Potential Negative Impacts	Mitigation measures	Responsibility	Location	Cost
	disposal sites. <ul style="list-style-type: none"> <li>Construction chemicals will be managed properly</li> <li>Clearly labelling all dangerous products,</li> <li>Fuel tanks (diesel or oil) should be placed in a concrete pool which its perimeter walls will be at least 1.0 m high with the concrete or plastered masonry wall,</li> <li>A proper floor drain should be installed on the slab of the concrete pool for safely discharging the leakages.</li> </ul>			
Impact on Flora and Fauna	<ul style="list-style-type: none"> <li>Avoid tree cutting</li> <li>In unavoidable cases, plant four trees of same species for each tree that is cut for construction</li> <li>The trench shall not be kept open in the night/after working hours. This will avoid any safety risk to people, domesticated, stray or wild animals.</li> <li>The Contractor shall ensure that the work site be kept clean, tidy and free of rubbish that would attract animals.</li> </ul>	Construction Contractor	Construction site Camp	Part of construction cost
Impact on Traffic	<ul style="list-style-type: none"> <li>Informing all residents and businesses about the nature and duration of any work well in advance so that they can make necessary preparations if necessary;</li> <li>Providing wooden walkways/planks across trenches for pedestrians and metal sheets where vehicle access is required</li> <li>Increasing workforce to complete the work in minimum time in these stretches</li> <li>Initial situation of private properties has to be re-established after construction</li> </ul>	Construction Contractor	Construction site Access Road	Part of construction cost
Hazardous Materials	<ul style="list-style-type: none"> <li>Comply with all national, regional and local legislation with regard to the storage, transport, use and disposal of petroleum, chemical, harmful and hazardous substances and materials.</li> <li>Establish an emergency procedure for dealing with spills or releases of petroleum.</li> <li>Storage of all hazardous material to be safe, tamper proof and under strict control.</li> <li>Petroleum, chemical, harmful and hazardous waste throughout the</li> </ul>	Construction Contractor	Construction site Storage Area	Part of construction cost

Potential Negative Impacts	Mitigation measures	Responsibility	Location	Cost
	site must be stored in appropriate, well maintained containers. • Any accidental chemical / fuel spills to be corrected immediately.			
Solid Waste	• Place of disposal of the waste concerned must be enclosed. • The waste must not have access to drainage water. • Waste must be immediately removed from the working sites. • Waste must be placed in secondary protective basins. • This waste can be transferred only to a certified contractor.  The personnel involved in the handling of hazardous and non-hazardous waste will undergo specific training in: • Waste handling • Waste treatment; and • Waste storage.	Construction Contractor		Part of construction cost
Loss of top soil	• Top soil of about 1 ft depth (0.3 m) shall be removed and stored separately during excavation work, and after pipeline construction the same soil shall be replaced on the top.	Construction Contractor	Pipeline work in pasture lands, agricultural land, Location of New East Reservoir	Part of construction cost
Erosion due to excavation/refilling	• Ensure proper compaction of refilled soil and there shall not be any loose soil particles on the top; the material shall be refilled in layers and compacted properly layer by layer. • In the steep slopes, local grass species shall be planted on the refilled trenches.	Construction Contractor	All construction sites	Part of construction cost
Impact on air quality due to emissions from construction equipment/vehicles	• Ensure that all equipment & vehicles used for construction activity are in good condition and are well maintained • Ensure that all equipment & vehicles confirms to emission and noise norms	Construction Contractor	Kutaisi	Part of construction cost
Damaging of protected trees	• The old trees to be protected shall be marked. • A vegetation protection fence will be installed during construction stage in order to protect the valuable trees and • Access road to construction site shall be shifted as far away from the old trees to be protected, as it is technically feasible	Construction Contractor	New East Reservoir	Part of Construction Cost

Potential Negative Impacts	Mitigation measures	Responsibility	Location	Cost
Socio-economic benefits from employing local people in construction work	<ul style="list-style-type: none"> <li>To the extent possible labour force should be drawn from the local community</li> </ul>	Construction Contractor	All construction sites	Part of construction cost
Impacts due to import of labour and establishment of temporary labour camps	<ul style="list-style-type: none"> <li>In unavoidable case of sourcing labour from other areas, provide adequate housing facilities so that there are no impacts and conflict with the local people: <ul style="list-style-type: none"> <li>Establish temporary labour camps in consultation with the local authority</li> <li>Shall be located away from water bodies</li> <li>No clearance of trees vegetation shall be allowed for establishment of camp</li> <li>Provide all basic amenities (water supply and sanitation, waste collection &amp; disposal, first aid facilities, etc.)</li> <li>Contractor shall provide fire wood and no worker shall be allowed to cut any tree</li> <li>Ensure regular and clean maintenance of the camp</li> </ul> </li> </ul>	Construction Contractor	Temporary labour camps	Part of construction cost
Safety risk – public and worker	<ul style="list-style-type: none"> <li>Follow standard and safe procedures for all activities – such as provision of shoring in deep trenches (&gt;2 m)</li> <li>Exclude public from the site – enclose construction area, provide warning and sign boards, security personnel</li> <li>Provide adequate lighting to avoid accidents</li> <li>Ensure that all workers are provided with and use appropriate Personal Protective Equipment - helmets, hand gloves, boots, masks, safety belts (while working at heights etc.);</li> <li>Maintain accidents records and report regularly</li> <li>Trench construction shall be taken up in small segments, so that work (excavation, pipe laying and refilling) in each segment is completed in a day. No trenches shall be kept open in the night/after work hours.</li> </ul>	Construction Contractor	All construction sites	Part of construction cost
Historical, archaeological chance finds during excavation	<ul style="list-style-type: none"> <li>Contractor shall put in place a protocol for conducting any excavation work, to ensure that any chance finds are recognized and measures are taken to ensure they are protected and conserved. This should involve: <ul style="list-style-type: none"> <li>Having excavation observed by a person with archaeological</li> </ul> </li> </ul>	Construction Contractor	All construction sites	Part of construction cost

Potential Negative Impacts	Mitigation measures	Responsibility	Location	Cost
	field training; <ul style="list-style-type: none"> <li>Stopping work immediately to allow further investigation if any finds are suspected;</li> <li>Calling in the state archaeological authority if a find is suspected, and taking any action they require to ensure its removal or protection in situ..</li> </ul>			
Cumulative impacts – repeated disturbance to roads and people	<ul style="list-style-type: none"> <li>Schedule the construction activities in harmony with the other ongoing works</li> <li>Schedule works before road work</li> </ul>	Construction Contractor, SC	Transmission line works, works on water supply network in the town	Part of construction costs
<b>Operation</b>				
Risk of delivery of unsafe water to consumers	<ul style="list-style-type: none"> <li>Conduct regular water quality monitoring; results of monitoring conducted at this feasibility stage can be used as base values to study the change in the water quality in future</li> <li>Develop &amp; implement water quality monitoring program for distribution system</li> <li>Establish a water quality laboratory as part of the project, with adequate building, equipment and trained personnel</li> </ul>	UWSCG	Water network	Part of operating costs
Disturbance/ nuisance/ noise due to operation activity	<ul style="list-style-type: none"> <li>Plan transportation routes in consultation with Municipality and Police</li> <li>Schedule transportation activities by avoiding peak traffic periods</li> <li>Use tarpaulins to cover loose material that is transported to and from the site by truck</li> <li>Educate drivers: limit speed between 20-25 KMPH and avoid use of horn in the town</li> <li>Provide prior information to local people about work;</li> </ul>	UWSCG	Reservoirs, pumping stations, pipe alignments, transport routes	Part of operation costs

### **3. Monitoring**

194. Monitoring describes (a) monitoring measures with technical details, including parameters to be measured, methods to be used, sampling locations that will signal the need for corrective actions; and (b) monitoring and reporting procedures to ensure early detection of conditions that necessitate particular mitigation measures and document the progress and results of mitigation.

195. A program of monitoring will be required to ensure that all concerned agencies take the specified action to provide the required mitigation, to assess whether the action has adequately protected the environment, and to determine whether any additional measures may be necessary. Regular monitoring of implementation measures by Civil Contractors will be conducted by the SC, on behalf of Implementing Agency. Monitoring during operation stage will be conducted by the UWSCG.

196. Most of the mitigation measures are fairly standard methods of minimizing disturbance from building in urban areas (maintaining access, planning work to minimize public inconvenience and traffic disruptions, finding uses for waste material, etc). Monitoring of such measures normally involves making observations in the course of site visits, although some require more formal checking of records and other aspects. The regular control and inspection during general construction activities in Kutaisi is needed

Table 10: Environmental Monitoring Plan for general construction activities at Kutaisi

Item	Parameter	Frequency	Action Level	Response When Action Level Exceeded	Responsibility
<b>Pre construction</b>					
Tender documentation	Environmental Issues	Once before bid announcement	Environmental audit of bidding documents to ensure relevant sections of the EMP have been included	Integrate all environmental requirements into bidding documents	SC
Contract documentation with construction contractor	Environmental Issues	Once before contract signature	Environmental audit of contract documents to ensure relevant sections of the EMP have been included	Integrate all environmental requirements into bidding documents	SC
<b>Construction</b>					
Ambient Air	Dust	Continual	Visual assessment during the Works Impact Monitoring Compliance Monitoring	If dust levels are above acceptable visual levels, implement dust suppression techniques (wetting down area) and/or assess weather conditions and maybe temporarily cease works until conditions ease	SC
Noise	(15 minute) Noise Levels	Only as required: Periodic attended Monitoring at hourly intervals at nearest potentially sensitive receivers.	+20 dBA for short term (< 4 weeks) +10 dBA for medium term (4 – 26 weeks) Impact Monitoring Compliance Monitoring	If noise action level is exceeded then review work practices and noise control procedures, including maintenance of equipment, installation of silencers, provision of noise barriers and modification of work hours.	SC
Surface Water Quality	Quality/ Contaminant concentrates	Continue in rainy weather	guideline / licence requirements (whichever is Applicable) Impact Monitoring Compliance Monitoring	If contaminant concentrations/licence conditions are exceeded, review disposal options and decide on most applicable. Report any accidents of licence (of applicable) to issuing authority.	SC

Item	Parameter	Frequency	Action Level	Response When Action Level Exceeded	Responsibility
Waste Management Implications	Segregation, Storage and transport of wastes	Monthly inspection	visual assessment during the Works; - Field inspection, - Report of waste volumes generated Report and record all leakages and spills Impact Monitoring Compliance Monitoring	Solid waste cycled as 0 % of movement of solids or liquid waste through the soil, rocks, water, atmosphere.	SC
Ground	Soil Monitoring and Erosion Control	Continual	Assess adequacy of sedimentation/ environmental controls on-site Impact Monitoring	If controls have failed or are found inadequate, cease works immediately and repair to an acceptable standard	SC
Ecological Resources	Fauna and Flora	Continual	Minimal ecological impacts Impact Monitoring	Required to ensure the recommended mitigation measures are properly implemented.	SC
Landscape and Visual	Surface treatment of temporary structures	Once at the Completion of work	Minimum disturbance of the original landscape Impact Monitoring	Required to ensure the recommended mitigation measures are properly implemented	SC
<b>Operation</b>					
Drinkable water	Drinking water quality	According with GoG drinking water regulation	Full compliance to requirements of GoG drinking water regulation Impact Monitoring Compliance Monitoring	Close isolation valves to isolate sections where contamination is observed. Cease water supply until the water quality is reassured. Immediate remedial action	UWSCG
Infrastructure	Breaks / Deteriorations/ Leakage	Monthly inspection	Visual Assessment Public Complaints Compliance Monitoring	If breaks/ failures occur, close isolation valves (or plug man-holes) immediately and repair / replace to an acceptable standard.	UWSCG

## CONCLUSION AND RECOMMENDATION

### 1. Recommendation

197. The environmental impacts of the infrastructure elements proposed in the water supply improvement subproject in Kutaisi were assessed and are described in the previous sections of this document. Potential negative impacts were identified in relation to design, location, construction and operation of the improved infrastructure. Mitigation measures were developed to reduce all negative impacts to acceptable levels.

198. Mitigation measures were discussed with engineering specialists, and some measures have already been included in the design. This means that the number of impacts and their significance has already been reduced by the design.

199. Regardless of these and various other actions taken during the IEE process and in developing the project, there will still be impacts on the environment when the infrastructure is built and when it is operating. Appropriate avoidances/ mitigation/ enhancement measures are suggested for the likely impacts that are identified.

200. During the construction phase, impacts mainly arise from generation of dust from soil excavation and refilling; and from the disturbance to residents, traffic and important buildings by the construction work. These are common impacts associated with the construction processes, and there are well developed methods for their mitigation. Various measures are suggested, including:

- Utilizing surplus/waste soil for beneficial purposes
- Measures to reduce/control dust generation (cover/damp down by water spray; consolidation of top soil, cover during transport etc.)
- Providing prior public information and planning the work in consultation
- Avoiding night time construction activities

201. The environmental assessment process also identified opportunities for environmental enhancement. Certain measures suggested in this regard include:

- Employing the local people in construction work as much as possible to provide them with a short-term economic gain
- Employing local people in operation and maintenance of the new systems

202. Most facilities will operate with routine maintenance, which should not affect the environment. Measures have been suggested to provide adequate drinking water quality (water quality surveillance program).

203. The main beneficiaries of the improved water supply system will be the citizens of Kutaisi, who will be provided with a constant supply of good quality water, which serves a greater proportion of the population, including urban poor. This will improve the quality of life of people as well as raising standards of both individual and public health.. This should lead to economic gains as people will be away from work less and will spend less on healthcare, so their incomes should increase.

204. Mitigation will be assured by a program of environmental monitoring conducted during both construction and operation to ensure that all measures are provided as intended, and to determine whether the environment is protected as envisaged.

205. Performance indicators shall be utilized as reference for the level of performance of the project vis-à-vis the environmental and social concerns at the worksites.

206. Stakeholders were and will be involved through both face-to-face discussions on site and a public meeting held in the town, after which views expressed were incorporated into the IEE and the planning and development of the project.

207. The recommendation of this IEE process is that all mitigation, enhancement and monitoring activities proposed here shall be implemented in full. This is essential to ensure that the environmental impacts are successfully mitigated; this is the responsibility of UWSCG.

## **2. Conclusion**

208. The environmental impacts of the proposed water supply subproject in Kutaisi were assessed by the Initial Environmental Examination reported in this document. The impacts are found to be limited to the construction phase.

209. An Environmental Management Plan (EMP) has been prepared and will be implemented during the project implementation. The EMP identifies the potential environmental impacts arising from the project along with a set of the mitigation measures to reduce the impacts to acceptable levels. It also includes the institutional arrangements for implementing the EMP to ensure its effectiveness.

210. The overall conclusion of the IEE is that provided the mitigation and enhancement measures are implemented in full, there should be no significant negative environmental impacts as a result of location, design, construction or operation of the subproject. There should in fact be positive benefits through major improvements in quality of life and individual and public health once the scheme is in operation.

211. The citizens of Kutaisi will benefit from continuous supply of good quality water. The project will stimulate economic growth. Continuous water supply and drinking water of good quality is prerequisite for tourism development. The standard of individual and public health will improve as a result of the project. The project will generate new job opportunities.

# Appendices

**Minutes of Meeting of Public Hearing on 16<sup>th</sup> of July 2013**

**LCC “United Water Supply Company of Georgia”**

Public Hearing Meeting  
Improving the Water Supply System in Kutaisi

Initial Environmental Examination Report

Minutes  
11:00 am

Kutaisi

16.07.2013

The following persons attended the meeting:

1. Beso Nibladze - "United Water Supply Company of Georgia, LLC", Head of Environmental Protection and Resettlement Division;
2. Misha Tataradze - "United Water Supply Company of Georgia, LLC", Head of Kutaisi Service Centre;
3. Ketevan Chomakhodze - "United Water Supply Company of Georgia, LLC", Environment Specialist;

The following residents of Kutaisi attended:

1. Leo Nutsubidze - local resident
2. Zaur Shalamberidze - local resident
3. Pridon Shalamberidze - local resident
4. Irakli Dangadze - local resident
5. Badri Chiteishvili - local resident
6. Bejan Dangadze - local resident
7. Gioiri Gaganidze - local resident
8. Malkhaz Pruidze - local resident
9. Leri Shalamberidze - local resident
10. Lasha Sasageishvili - local resident

**Public Consultation**

The public consultation meeting was held on July 16, 2013 in Kutaisi, at the Service Centre of United Water Supply Company of Georgia, LLC. The consultative meeting was organized with representatives from the local population of Kutaisi.

By giving advertisements in advance, attendance of a wide range of related people to the meetings was encouraged. During the Public Consultation Meetings, citizens were informed about the activities to be carried out within the scope of the project, environmental effects of the project and measures to be taken against these effects. Opinions, ideas and suggestions of the local residents and related people were received during the meeting.

## Public Opinion

Consultation with affected population was undertaken

- to ensure their informed participation in the design, implementation and monitoring of the project measures and their impacts on the environment, as well as the efforts to minimize and the mitigate impact when avoidance is not possible;
- to introduce the project benefits to the local population that accrue to them as a result of project implementation;
- to incorporate all relevant views of affected people and other stakeholders into decision making, such as project design, mitigation measures, the sharing of development benefits and opportunities, and implementation issues.

The following topics were discussed during the meeting:

- project context and rationale
- expected start and end of the project
- benefits of the project to local population and to the country as a whole
- the environmental issues and mitigated measures related to the project

The public consultation showed a support for the Kutaisi subproject by the local population. The population recognizes the need to accept limited nuisances as a result from the construction works, and understands that the implementation would fail without a good cooperation between the local population, the contractor and UWSCG. They were aware of the need to improve the water supply services. Residents also were of the view that the proposed project will improve the public health, the environment, and the socio-economic development of the City.

The Following questions have been asked from the local population:

#	Questions from local residents	Answers from the United Water Supply Company of Georgia
1	When will the project start?	The project will start in 2014, not before the 3rd Tranche is signed by the Government of Georgia and ADB and a Construction Company has been selected based on the 2 stage selection process.
2	Will the water provided to the local population for 24hours and will tap water quality improved?	Yes, water will be supplied for 24h to local residents and water quality will be greatly improved.
3	Name of the employer of a Kutaisi Water Supply System	United Water Supply Company of Georgia, LLC
4	What is the duration of the project?	36 months.
5	What type of impact on environment is associated with the project?	Environmental impacts that are associated with the project are only site specific. Impacts are mostly confined to the construction stage of the project and are therefore temporary. An Environmental Management Plan (EMP) has

#	Questions from local residents	Answers from the United Water Supply Company of Georgia
		<p>been prepared and will be implemented during the project implementation. The EMP identifies the potential environmental impacts arising from the project along with a set of the mitigation measures to reduce the impacts to acceptable levels</p> <p>Impacts mainly arise from generation of dust from soil excavation and refilling; and from the disturbance to residents, traffic and important buildings by the construction work. These are common impacts associated with the construction processes, and there are well developed methods for their mitigation.</p>
6	What will be benefit for local population from the rehabilitation of the water supply system in Kutaisi?	The Project will have overall beneficial impacts on quality of life for the citizens of Kutaisi. It will stimulate economic growth by constant supply and good quality of drinking water which is a prerequisite for tourism development.
7	Will local population employed by contractor?	Yes. Contractor will ensure involvement of local population in construction works.

There were no other comments or/and opinions from local population.

It should be mentioned also that public hearing meeting for the first tranche of Kutaisi project was held on May 10th, 2012, in Kutaisi at Kutaisi Opera House, where new east reservoir was also discussed as a planned one should be constructed in the next phase of the project.

Photos of the public consultation:





## Appendix 2

### Chance Finds Report Form

Please contact: \_\_\_\_\_  
To discuss find, on: \_\_\_\_\_

Date of Find: \_\_\_\_\_ Person who identified find: \_\_\_\_\_

Description of Initial Find:

Was work stopped in the immediate vicinity of the find?

☐ Yes ☐ No

Was an archaeologist contacted?

☐ Yes ☐ No

#### Archaeological Detail:

Date of inspection: \_\_\_\_\_

Reporting Archaeologist: \_\_\_\_\_

GPS coordinates:

Photo Record:

Zone: \_\_\_\_\_ N: \_\_\_\_\_ E: \_\_\_\_\_

☐ Yes ☐ No

Does Chance Find Correspond to a known PNG National Museum site?

☐ Yes ☐ No

If Yes, which site code: \_\_\_\_\_

If No, temporary site code is: \_\_\_\_\_

If No, new Museum site code is: \_\_\_\_\_

Description of Find (fill in applicable information) (use additional pages if required):

Artefact type: \_\_\_\_\_

Max artefact length (in mm): \_\_\_\_\_

Max artefact width (in mm): \_\_\_\_\_

Max artefact thickness (in mm): \_\_\_\_\_

Max artefact platform width (in mm): \_\_\_\_\_

Approximate number of artefacts at site:

- ☐ 1  
☐ 2 to 10  
☐ > 10  
☐ > 50

Approximate size of site:

Site area: \_\_\_\_\_ m<sup>2</sup>

Site length: \_\_\_\_\_ m

Site height (max) (for rockshelters/caves): \_\_\_\_\_ m

Other: \_\_\_\_\_

Brief description of site and vegetation (e.g., surface sediment type, ground surface visibility, distance to nearest freshwater source, attach site sketch if necessary):

Brief description of find(s):

Statement of Significance (scientific, spiritual, historic, aesthetic and emotive and any evidence of stratification):

Level of Significance as per the PNG LNG Chance Finds Protocol Flowchart

Low ☐ Medium ☐ High ☐ Skeletal ☐

Impact Assessment

Is site destroyed?

☐ Yes

☐ No

Can further impacts to the chance find be avoided?

☐ Yes

☐ No

Avoidance and mitigation measures discussed:

Impact to Find

Avoidance and mitigation outcome:

Date completed form lodged:

Person who lodged form:

Signature:

\_\_\_\_\_