

# Environmental Monitoring Report

---

Bi-annual Environmental Monitoring Report  
January 2013

## PAK: Flood Emergency Reconstruction Project

Prepared by Works & Services Department, Sindh for the Asian Development Bank.

## **NOTES**

- (i) The fiscal year (FY) of the Government of the Islamic Republic of Pakistan and its agencies ends on 30 June.
- (ii) In this report, "\$" refers to US dollars.

This environmental monitoring report is a document of the borrower. The views expressed herein do not necessarily represent those of ADB's Board of Directors, Management, or staff, and may be preliminary in nature.

In preparing any country program or strategy, financing any project, or by making any designation of or reference to a particular territory or geographic area in this document, the Asian Development Bank does not intend to make any judgments as to the legal or other status of any territory or area.



# Bi-annual Environmental Monitoring Report

Project Number: 2742/2743 - PAK  
February-July 2012

## PAKISTAN

### Flood Emergency Reconstruction Projects (FERP)

### Reconstruction and Rehabilitation of Roads

*(ADB Loan Nos. 2742/2743 - PAK)*

Prepared by: Aziz-Ur-Rehman  
Associate Consulting Centre  
Islamabad, Pakistan

For Works & Services Department, Sindh  
&  
Project Management Consultants

## CONTENTS

<b>1.</b>	<b>INTRODUCTION.....</b>	<b>1</b>
1.1	Construction activities of the project.....	2
1.2	Project Organization and Environmental Management Team.....	2
1.3	Relationship with the Contractor, owner and lender.....	2
<b>2.</b>	<b>ENVIRONMENTAL MONITORING.....</b>	<b>4</b>
2.1	Environmental Monitoring Summary.....	4
2.2	Noise and vibration.....	4
2.3	Water Quality.....	4
2.4	Air Quality.....	4
2.5	Flora and Fauna Monitoring.....	5
2.6	Campsites.....	5
2.7	Topsoil erosion.....	5
2.8	Cultural heritage sites.....	6
2.9	Safety provisions.....	6
<b>3.</b>	<b>ENVIRONMENTAL MANAGEMENT.....</b>	<b>7</b>
3.1	DDR review of REA's.....	7
3.2	DDR-I of Priority-I roads.....	7
3.3	DDR-II of Priority-II roads.....	7
3.4	DDR-III of Priority-III roads.....	8
3.5	Campsite guidelines.....	8
3.6	EMP compliance checklist.....	8
<b>4.</b>	<b>CONCLUSIONS AND RECOMMENDATIONS.....</b>	<b>9</b>

## **Annexes**

- I. Construction activities of the project
- II. EMP Compliance Checklists
- III. Campsite Guidelines
- IV. Environment Management Plan
- V. Photograph

## **Figures**

Figure.1: Organization Setup for EMP Implementation

## ABBREVIATIONS

<b>ADB</b>	Asian Development Bank
<b>DNA</b>	Damage and Need Assessment
<b>dB</b>	Decibel
<b>EIA</b>	Environmental Impact Assessment
<b>EMP</b>	Environmental Management Plan
<b>EMMP</b>	Environmental Management Monitoring Plan
<b>ES</b>	Environment Specialist
<b>FERP</b>	Flood Emergency Reconstruction Project
<b>GoS</b>	Government of the Sindh
<b>HSE</b>	Health Safety and Environment
<b>NEQS</b>	National Environmental Quality Standards
<b>PMC</b>	Project Management Consultants
<b>PMU</b>	Project Management Unit

## 1. INTRODUCTION

1. The catastrophic monsoon flood in 2010 had caused nationwide large-scale damages to the infrastructure and livelihoods of the people of Pakistan. Faced with such a widespread natural disaster, the Government of Pakistan (the Government) had requested the Asian Development Bank (ADB) and World Bank to lead a Damage and Needs Assessment (DNA). Based on the DNA findings, the total damage was estimated at \$10 billion. Several external institutions had already committed support to the Government for rehabilitation and reconstruction activities, mainly in livelihood restoration, cash grants for housing, agriculture, and social sectors. However, there were major funding and capacity needs in the infrastructure sectors, including transport, irrigation, flood management, and other public infrastructure that remain unfulfilled.

2. In response, ADB agreed to support the Government with a total loan package of \$650 million through the Flood Emergency Reconstruction Project (FERP), with focus on roads and bridges; and, irrigation, drainage and flood protection. FERP's implementation structure has five mottos: speed, efficiency, transparency, building back better and safer, and accountability.

3. The widespread catastrophe of floods in 2010 had worst hit the Sindh province, wherein some seven administrative districts were severely affected. The affected districts were mostly on west bank of Indus River, namely, the Jacobabad, Shikarpur, Larkana, Kamber-Shahdadkot, Dadu, Jamshoro and Thatta. Large-scale damages had occurred to the public infrastructures, belonging to both national and provincial government entities, and private housing, markets and croplands. The people had lost access to and utilization of various infrastructures, and had suffered from damages to their housing and commercial structures, loss of crops, businesses and other livelihood resources. A number of donor agencies and NGOs came forth to assist the affected people with localized and small-scale house reconstruction and livelihood restoration activities.

4. The Flood Emergency Reconstruction Project (FERP) was funded and administered under an emergency assistance from Asian Development Bank (ADB). Rapid Environmental Assessment (REA) screening checklists given in the ADB's Environmental Assessment and Review Framework was completed for each subproject to classify the categorization of each road. It is an essential ADB funding requirement to categorize any project before approval of loan. There are three categories on the basis of screening questions listed in Rapid Environmental Assessment (REA) checklists. The categories are based upon environmental sensitivity of the project.

5. The REA determined that all road projects do not have significant adverse environmental impacts of such nature or magnitude that would require a more detailed EIA. Therefore, Sectoral IEE's and EMP's were prepared by the consultants for roads in the upper and lower Sindh Districts. Sectoral IEE's classify all road projects as Category - C projects.

## **1.1 Construction activities of the project**

6 Construction activities of the project were divided into three phases depending upon priority of the roads. Priority I has 10 Roads packages, Priority II has 16 and Priority III has 14 roads to be constructed. Name of each Road Package, town names, length of the road, contractor's names and physical progress achieved during the reported period are detailed in Annex-I.

## **1.2 Project Organization and Environmental Management Team**

7. Overall responsibility for Environmental Management and Monitoring rests with the Project Management Unit (PMU) of the Works & Services Department, the implementation agency (IA), Government of the Sindh (GoS) which is headed by a Project Director (PD). The PMU is supported by Design Consultant and Project Management Consultant (PMC) during implementation and monitoring of the EMP.

8. Environmental Protection Agency (EPA) Sindh act as the overall regulatory body. The Directorate of Environment and Social Safeguards PMU acts as Environmental Management Office. The design consultants ensure that all the environmental mitigation measures proposed for the design phase are incorporated in the design and included in the contract documents. The input of design consultant has been completed.

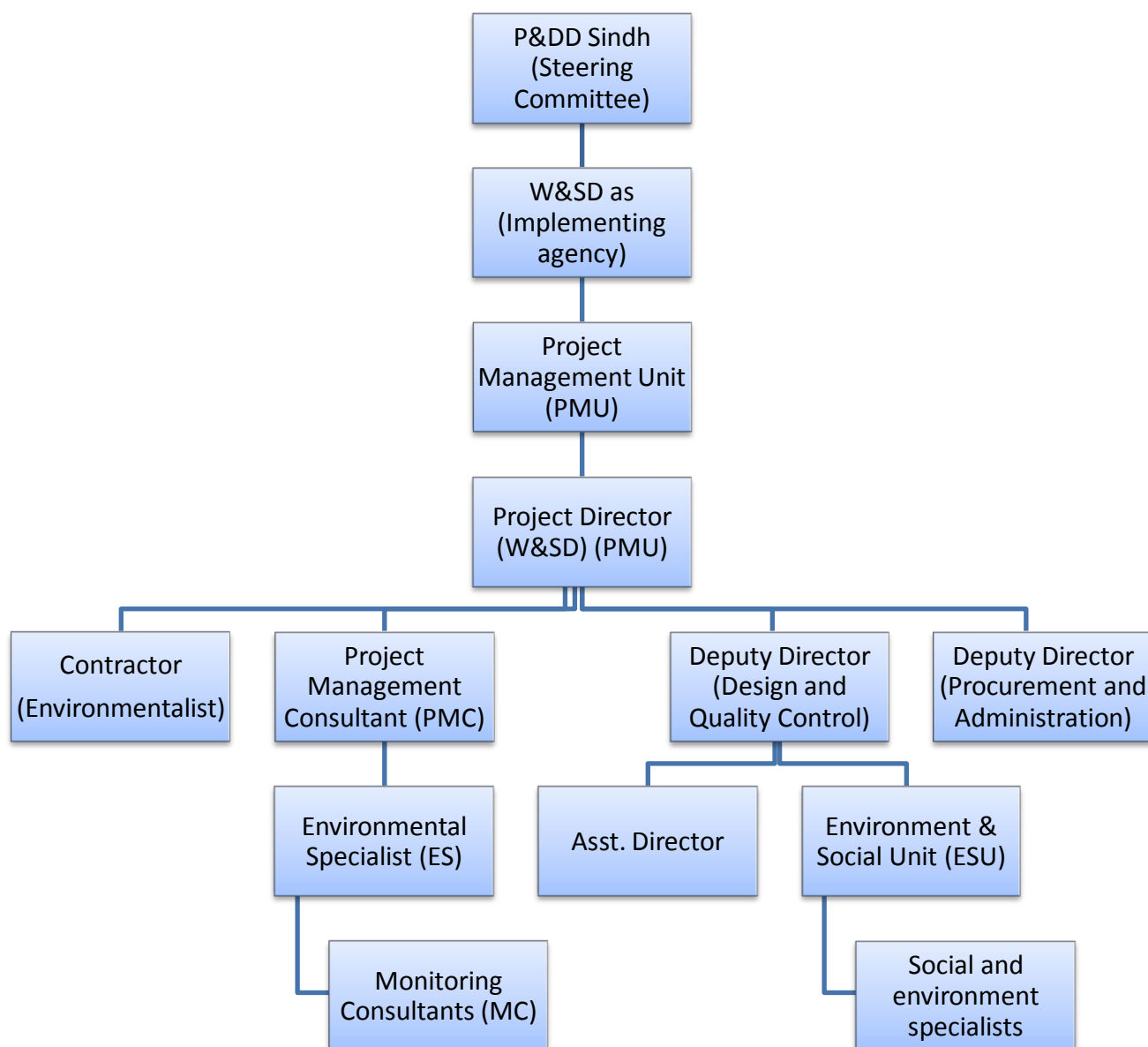
9. Environmental monitoring is responsibility of the PMC. PMC has hired services of Environment Specialist (ES). Contractors ensure that all Project activities are in compliance with the EMP and NEQS. Contractors designated personal to implement EMP prepare environmental compliance reports and submit to Monitoring Consultants (MC), concerned RE's and ARE's. MC review environmental monitoring reports, ensure that day-to-day construction activities are carried out in an environmentally sound and sustainable manner and submit to ES. ES also conduct periodic site visits to ensure that EMP recommendations are implemented. Services of two professionals, Executive Engineers, were hired at ESU to overall review environmental and social safeguard issues of the project.

10. The organizational chart for the implementation of the Environmental Management and Monitoring Plan is shown in Figure-1.

## **1.3 Relationship with the Contractor and the Engineer**

11. A good working relationship was maintained among the contractor and the Engineer during the execution of the project. Contractor's representatives were informed about the Environmental Management and Monitoring activities. During camp site inspection areas of improvement were mutually discussed with Contractor's representatives. EMP compliance checklist and status of compliance in monthly progress were developed by ES and shared with contractors.





**Figure - 1: Organization Setup for EMP Implementation**

## **2. ENVIRONMENTAL MONITORING**

### **2.1 Environmental Monitoring Summary**

12. The environmental monitoring was carried out by using monthly EMP compliance checklists (Annex-II) as well as through visual observations to get information on the actual nature and extent of key impacts and the effectiveness on mitigation and enhancement measures outlined in the Environmental Management Plans (EMP's) and agreed by the Contractors under the contracts. The monitoring of noise and vibration, surface and groundwater, air quality, flora and fauna, campsites, top soil erosion, cultural heritage and safety provisions are discussed in this section.

### **2.2 Noise and Vibration**

13. Implementation of the mitigation measures recommended in EMP to reduce the impact of Noise and Vibration were observed. Construction activities situated close to populated areas were limited to daylight hours only to minimize the impact of noise. Prayer timings and school timings were observed close to the mosques and schools along the carriageway during the construction activities. Camp sites were established away from the residential areas. Contractors were advised to keep their earth moving equipment in good condition. Provide personal protective equipment like ear plugs to the working staff at noise generating sites.

14. No noise and vibration related complaints from public or workers were registered during the reporting period.

### **2.3 Surface and Ground Water**

15. Preventive measures recommended in EMP were observed to monitor any Surface and Ground Water contamination that may result due to construction activities or storage of material at site. It was advised to keep fuel and oil storage areas away from water courses. Asphalt treatment was not allowed to practice during rain to avoid it being washed into water courses.

16. Arrangements for proper storage and disposal for solid waste were devised. Camp areas were selected having adequate natural drainage. Septic Tank and Soak Pits were provided at camp site for treatment of effluents.

17. No surface water or ground water contamination was reported due to oil spillages, solid waste dumping or asphalt laying during the reporting period. Potable water was supplied to the workers working at site.

### **2.4 Air Quality**

18. There is no potential source of pollution such as chemical industry exists in the area so only dust and smoke emissions were monitored visually as recommended in the approved EMP of the Project. It was recommended to take asphalt material from existing approved asphalt plants.

19. Visual observations were noted to monitor regular water sprinkling at dust prone areas during the construction activities. However, some violations were observed and the concerned

contractors were advised to take care to control the dust emissions. Visual observations were also made for fitness of the vehicles to minimize the smoke emissions.

## **2.5 Flora and Fauna**

20. During the reported period no flora and fauna was disturbed by the construction activity by Contractors. No mortality of wild animal was reported.

## **2.6 Campsites**

21. Guidelines to establish campsite were prepared by Environment Specialist (PMC) in the light of EMP recommendations. Campsites of all the project sites were visited to assess environmental compliance. In initial visits it was observed that copy of the EMP was not available at campsites. Copy of the EMP was shared with the contractors at each campsite. EMP compliance checklist to monitor monthly environmental compliance of the project was also discussed with contractor's site staff. Informal training was provided during each campsite visit regarding implementation of EMP, campsite guidelines and monthly EMP compliance checklists.

22. Contractors were advised to provide PPE to workers. First Aid Kits should be provided at campsite, worksite and an individual nominated to address emergency requirements. Arrangements should be made for proper storage and disposal of waste. ESU is reviewing environmental compliance in light of EMP recommendations. Environmental compliance notifications will be issued to the concerned contractors with specific timelines for their compliance.

23. Contractors were also advised to encourage hiring of local labor. Hiring of child labor and forced labor was prohibited. Fencing of campsite was recommended to avoid any trespassing.

24. Use of LPG cylinders was recommended, whereas use of wood as fuel was discouraged. Use of wood was observed at different campsite due to non-availability of LPG cylinders. Contractors were advised to avoid any wood burning.

25. No complaints regarding transmission of Communicable diseases (such as STI's and HIV/AIDS) were reported during the reporting period.

## **2.7 Top Soil Erosion**

26. Contractors were made responsible for regulating the procurement of borrow material and protecting topsoil from erosion by complying with the recommendation of EMP. Monthly EMP compliance reports indicate that either borrow pits are available in the ROW or natural areas with high elevation are available as borrow areas.

27. All borrow areas were required to be approved by the consultant to assess their suitability. After completion of the project the borrow areas need to be restored to the natural land profile. If borrow areas are leased the land owner should be compensated as per lease agreement. No damage to the agricultural land due to borrow pits on agriculture land or top soil erosion is reported during this period.

## **2.8 Cultural Heritage Sites**

28. Project sites had been visited by Environment Specialist. No cultural heritage sites/ wetland/ protected area/ mangrove/ estuarine lies in RoW of project alignment. Almost all priority projects will be executed on existing roads.

## **2.9 Safety Provisions**

29. During project sites visits safety requirements during road construction were monitored by Environment Specialist. Road site safety considered to be serious concern along the roads especially broken culverts, road cuts, depressions and eroded road shoulders etc which may lead to any serious accident. Contractors were instructed to take road safety a priority, place safety signs (Safety cautions, Safety cones, Safety tapes etc). Some such bad patches on road may be addressed on urgent basis.

30. Implementation of EMP recommendation regarding the use of PPE by contractor site staff was also poor. Contractors were asked to provide PPE's to workforce and train / motivate them about their use.

31. However, no accident at any project has been reported during the reporting period.

### **3. ENVIRONMENTAL MANAGEMENT**

32. During the reporting period the following documents were reviewed and prepared for better Environmental Management of the project.

#### **3.1 DDR Review of REA's**

33. Due Diligence Review (DDR) of the Rapid Environmental Assessment (REA) screening checklists along with suitability of the mitigation measures recommended in EMP were reviewed by Environment Specialist, PMC for all road sector projects. It was also desired to review any change in the REA if some of the leftover portion of the roads were included in the project.

34. Documents including Project Administration Manual (PAM); Environmental Assessment and Review Framework (EARF), Sectoral Initial Environmental Examination reports, Generic Environmental Management and Monitoring Plans and project specific Rapid Environmental Assessment Reports prepared by the design consultants were reviewed for this purpose. Field visits were conducted, video logs were reviewed during the DDR reviews. Three separate DDR reports were prepared depending upon priority of the road projects.

#### **3.2 DDR-I of Priority I Roads**

35. Field visits of priority I roads were carried out along with the Resident Engineers (RE's) or ARE's. Consultation meetings were held with the contractor representatives. Visual observations and photographs were taken during the field visits. Video logs were reviewed for roads. Key findings were discussed with the concerned engineering staff and the contractors. DDR-I had been generated on the behalf of observations & submitted to PMU to meet the constraints. Recommendations had been made against all the environmental issues or problematic entities of road portions. It is concluded that all the projects will have no significant and irreversible environmental impacts. Therefore all projects are rightly specified as category-C.

#### **3.3 DDR-II of Priority II Roads**

36. Environment Specialist (PMC) visited the road stretches of Priority II in April 2012. EMP compliance of Priority II roads where contractor has been mobilized and environmental constrains which had been overlooked in REA was reviewed. Recommendations have been made against problematic entities which needs core action. It is concluded that all the projects will have no significant and irreversible environmental impacts. Therefore all projects are rightly specified as category-C.

#### **3.4 DDR-III of Priority III Roads**

37. Field visits of Priority III roads along with verification of EMP compliance & campsites were carried out along with the concerned Assistant Resident Engineers ARE's. Consultation meetings were held with the contractor representatives at project sites and campsites. Visual observations and photographs were taken during the field visits. Key findings were discussed with the concerned engineering staff and contractors. Monthly EMP Compliance Checklist to monitor environmental performance was also discussed. It is

concluded that all the projects will have no significant and irreversible environmental impacts. Therefore all projects are rightly specified as category-C.

### **3.5 Campsite Guidelines**

38. Campsite guidelines were developed by Environment Specialist, PMC to facilitate contractors while establishment of the camps to mitigate environmental concerns associated with campsite. These guidelines are mainly recommendation, mitigation measures given in the EMP for management of camp sites at the Siting, Design & Preconstruction and Construction Stages. Camp site guidelines are organized to detail the camp locations, camp site management, workers training requirement, plans and procedures and waste management. It is recommended that these guidelines should be followed in order to mitigate any adverse environmental impacts to safe guard the environment.

### **3.6 EMP Compliance Checklist**

39. Simple checklist has been developed to monitor monthly environmental compliance of all priority road projects. The checklist is generally based on the recommended mitigations measures given in the EMP for environmental safeguard at different stages of the project. Contractor will identify about any impact on any environmental concern categorized in the form of YES and NO during the reporting month. Monthly progress report will be supported with the objectively verifiable indicators (OVI's) like video logs, photographs, letters, copy or grievances registers, test reports etc. In case, if an impact is happened, corrective action taken should be provided in the remarks column and supported with OVI's.

#### 4. CONCLUSIONS AND RECOMMENDATIONS

- i. The work in progress at all sites without any significant adverse environmental impact.
- ii. Copy of the EMP, Campsite Guidelines, Grievance register and monthly EMP Compliance Checklists should be available at campsites. One person from contractor side should be designated to coordinate implementation of EMP recommendations and any first aid related issues.
- iii. No noise and vibration related complaints from public or workers were registered. Contractors were advised to conduct construction activities in daylight hours close to populated areas and observe prayer timings and school timings close to the mosques and schools along the roads.
- iv. No surface water or ground water contamination was reported due to oil spillages, solid waste dumping or asphalt laying during the reporting period.
- v. No flora and fauna was disturbed by the construction activity. No mortality of wild animal was reported.
- vi. No cultural heritage sites/ wetland/ protected area/ mangrove/ estuarine lies in RoW of project alignment.
- vii. No damage to the agricultural land due to borrow pits or top soil erosion is reported.
- viii. Road site safety considered to be serious concern along the roads especially broken culverts, road cuts, depressions and eroded road shoulders etc. which may lead to any serious accident. Contractors were advised to take road safety a priority, place safety signs (Safety cautions, Safety cones, Safety tapes etc.). Some such bad patches on road may be addressed on urgent basis.
- ix. Use of PPE by contractor site staff was also poor. Contractors were asked to provide PPE's to workforce and train / motivate them about their use.
- x. During construction, special attention should be given in the areas where there are encroachments on the roads side, to minimize the impact on the livelihood of the local personals.
- xi. The contractor should execute the project by employing local labor as much as possible. Contractors were made aware about ADB policy that hiring of child labor is strictly prohibited.
- xii. No complaints regarding transmission of Communicable diseases (such as STI's and HIV/AIDS) were reported.
- xiii. Overall no major conflict with the community was observed. Cordial liaison has been maintained with local community.

**TEAM LEADER CONTRACT BRIEF****FEBURARY MONTH CONTRACT BRIEF****GENERAL**

<b>TOTAL No OF Packages</b>	<b>46</b>	<b>Length of Total Packages</b>	<b>975.19</b>	<b>Cost of Total Packages (Million)</b>	<b>12,569.00</b>
<b>TOTAL Awarded Packages</b>	<b>10</b>	<b>Length of Awarded Packages</b>	<b>266.3</b>	<b>Cost of Awarded Packages (Million)</b>	<b>0.00</b>

**PHYSICAL PROGRESS**

RESIDENT ENGINEER I SUKKUR					RESIDENT ENGINEER II DADU					RESIDENT ENGINEER III THATTA				
Package #	Length (KM)	Cost (M)	Planned Progress	Achieved Progress	Package #	Length (KM)	Cost (M)	Planned Progress	Achieved Progress	Package #	Length (KM)	Cost (M)	Planned Progress	Achieved Progress
Package-5201 (A)	23.40	228.33	1.03%	4.71%	Package-5506	24.15	319.77	0.64%	0.13%	Package-5701	35.40	395.39	0.55%	0.14%
Package-5201 (B)	22.80	245.08	1.85%	2.64%	Package-5602	16.70	286.47	1.14%	0.40%	Package-5704	25.75	337.88	0.70%	0.18%
Package-5202	30.57	495.75	1.31%	1.90%	Package-5503	33.60				Package-5706 (A)	24.00			
Package-5203	30.57	402.74	1.58%	2.85%	Package-5501	17.60				Package-5706 (B)	17.00			
Package-5302	28.97	375.47	1.11%	4.67%	Package-5502	28.98				Package-5702	21.23			
Package-5401	28.00	335.76	2.15%	4.68%	Package-5505 (A)	15.30				Package-5703A	12.84			
Package-5101	18.51				Package-5505 (B)	15.30				Package-5703B	12.90			
Package-5205	26.70				Package-5603	37.68				Package-5709A	16.00			
Package-5206 (A)	13.63				Package-5604	32.60				Package-5709B	18.60			
Package-5206 (B)	10.52				Package-5504	19.30				Package-5705	19.32			
Package-5301 (A)	14.20				Package-5601	15.70				Package-5707-A	18.90			
Package-5301 (B)	14.90				Package-5605-A	17.20				Package-5707-B	16.52			



Annex-I

Package-5402 (A)	14.00				Package-5605-B	18.20				Package-5708	21.00			
Package-5402 (B)	14.00													
Package-5204	22.54													
Package-5303	16.09													
Package-5304 (A)	18.70													
Package-5304 (B)	23.93													
Package-5403	23.64													
Package-5404	27.75													
TOTAL IN %age	164.3		1.51%	3.58%		40.9		0.89%	0.26%		61.2		0.63%	0.16%
TOTAL IN (MILLION)	2,083.1	31.35	74.47			606.2	5.395	1.591			733.3	4.582	1.17	

### SUMMARY OF CONSTRUCTION CONTRACTS FOR PRIORITY I , II & III Month of March-2012

S #	Contract	Road	Length (KM)	Contractor	Contract Cost (M PKR)	Duration (Month s)	Commencement Date	Completion Date	Elapsed Time	Planned Progress by % age	Achieved Progress by % age	% age Lag/ Ahead	Last reported progress %age	Cumulative cost of work verified	%age of the total cost	Schedule Performance Index (SPI)	Cost Performance Index (CPI)	Remarks
<b>Priority - I Roads</b>																		
1	Package- 5201 (A)	Road from Jacobabad to Thull	23.40	M/s A.Z Builders	228.33	12	3-Feb-12	28-Jan-13	16.67%	9.47%	10.50%	1.03% ahead	4.71%	19.05	8.34%	132.77	Ahead of Schedule	159.63 Under Budget
2	Package- 5201 (B)	Road from Jacobabad to Thull	22.80	M/s Shahrugh (Jv)	245.08	12	9-Feb-12	3-Feb-13	16.67%	9.08%	10.15%	1.07% ahead	2.64%	★ 46.649	19.03%	100.34	Ahead of Schedule	44.74 Over Budget
3	Package- 5202	Road from Jacobabad – Dodapur to Garhi Khairo	30.57	M/s D. Baloch	495.75	18	9-Feb-12	2-Aug-13	11.11%	7.40%	8.25%	0.85% ahead	1.90%	★ 74.362	15.00%	100.12	Ahead of Schedule	29.57 Over Budget
4	Package- 5203	Road from Jacobabad – Dodapur to Garhi Khairo	30.57	M/s D. Baloch	402.74	15	3-Feb-12	28-Apr-13	13.33%	7.80%	8.50%	0.70% ahead	2.85%	★ 70.132	17.41%	100.13	Ahead of Schedule	41.33 Over Budget
5	Package- 5302	Road from Humayun to Thull Bypass i/c Link to Mian-jo-Goth	28.97	M/s Umer Jan & Co.,	375.47	15	3-Feb-12	28-Apr-13	13.33%	2.41%	8.80%	6.39% ahead	4.67%	9.581	2.55%	351.83	Ahead of Schedule	383.08 Under Budget
6	Package- 5401	Road from Shahdaktot to Garhi Khairo Road	28.00	M/s Lilley Int'l	335.762	15	3-Feb-12	28-Apr-13	13.33%	4.65%	7.50%	2.85% ahead	4.68%	★ 59.711	17.78%	142.67	Ahead of Schedule	34.73 Over Budget
7	Package- 5506	Road from Mehar to Faridabad	24.15	M/s NKB	319.766	12	9-Feb-12	8-Feb-13	16.67%	2.68%	1.60%	-1.08% lag	0.13%	0	0.00%	60.13	Behind Schedule	0.00 Over Budget IPC Nil
8	Package- 5602	Road from Sehwan to Jhangara	16.70	M/s Sh.Abdul R.Co	286.47	12	3-Feb-12	2-Feb-13	16.67%	3.75%	1.85%	-1.90% lag	0.40%	0	0.00%	33.66	Behind Schedule	0.00 Over Budget IPC Nil
9	Package- 5701	Road from Sujawal to Jati	35.40	M/s Zargoos Ent	395.39	18	14-Feb-12	7-Aug-13	11.11%	2.59%	0.30%	-2.29% lag	0.14%	0	0.00%	80.01	Behind Schedule	0.00 Over Budget IPC Nil
10	Package- 5704	Road from Jati to Chhachh Jehan Khan	25.75	M/s RMS	337.88	15	9-Feb-12	3-May-13	13.33%	2.51%	1.52%	-0.99% lag	0.18%	★ 50.681	15.00%	20.54	Behind Schedule	0.85 Over Budget
<b>Priority - II Roads</b>																		
11	Package- 5101	Reconstruction & Rehabilitation of Roads in District Kashmore Road From Ghouspur to	18.51	M/s Umer Jan & Co.,	239.351	12	28-Mar-12	22-Mar-13										
12	Package- 5206 (A)	Road from Thull to Saifal	13.63	M/s D. Baloch	172.293	12	20-Mar-12	15-Mar-13										
13	Package- 5206 (B)	Road from Thull to Saifal	10.52	M/s D. Baloch	137.794	12	20-Mar-12	15-Mar-13										
14	Package- 5301 (A)	Road from Khanpur to Thull	14.20	M/s A.Z Builders	172.35													
15	Package- 5301 (B)	Road from Khanpur to Thull via Rahimabad	14.90	M/s Umer Jan & Co.,	210.746	12	28-Mar-12	22-Mar-13										
16	Package- 5402 (A)	Road from Sujawal to Garhi Khairo	14.00	M/s Lilley Int'l	214.419	12	20-Mar-12	15-Mar-13										
17	Package- 5402 (B)	Road from Sujawal to Garhi Khairo	14.00	M/s Lilley Int'l	208.379	12	20-Mar-12	15-Mar-13										
18	Package-5502	Reconstruction & Rehabilitation of Roads in District Dadu (i)K.N.Shah - Burira - Gozo Road	28.98	M/s NKB	373.699	15	28-Mar-12	25-Jun-13										
19	Package- 5501	Road from Dadu to Johi road	17.60	M/s Stnd.Const C	256.771													
20	Package-5505 (A)	Road Mehar to Warah via Gaji Khawar	15.30	M/S Shahrugh (Jv)	158.379	12	22-Mar-12	21-Mar-13										
21	Package-5505 (B)	Road Mehar to Warah via Gaji Khawar	15.30	M/S Shahrugh (Jv)	173.907	12	22-Mar-12	21-Mar-13										
22	Package-5603	Road from Indus Highway to Bubak via Jaheja Khabrote (ii) Road from Indus Highway to Bhan	37.68	M/s Qasim Khan	496.07	18	28-Mar-12	26-Sep-13						★ 74.409	15.00%			
23	Package-5604	Road from Indus Highway @ Tando Shahbazi Railway X-ing to Dadu	32.60	M/s Ibrahim Khan	309.63													
24	Package- 5702	Road from Chuhr Jamali-Chach Jehan via Ladyoon link to Shah vageen	21.23	M/s Kazi Nisar.Co	251.595	15	30-Mar-12	27-Jun-13										
25	Package-5706 (A)	Road from Sujawal -Bathoro-Bulri Shah Karim	24.00	M/s Friends Entr.	275.304													
26	Package-5706 (B)	Road from Sujawal -Bathoro-Bulri Shah Karim	17.00	M/s Haji Sirajuddin	186.501													

Commulative cost of work verified included mobilization advance paid for contractor

**SUMMARY OF CONSTRUCTION CONTRACTS FOR PRIORITY I, II & III Month of March-2012**

S #	Contract	Road	Length (KM)	Contractor	Contract Cost (M PKR)	Duration (Months)	Commencement Date	Completion Date	Elapsed Time	Planned Progress by % age	Achieved Progress by % age	% age Lag/ Ahead	Last reported progress %age	Commulative cost of work verified	%age of the total cost	Schedule Performance Index (SPI)	Cost Performance Index (CPI)	Remarks
Priority - III Roads																		
27	Package-5205	Reconstruction & Rehabilitation of Roads in District Jacobabad(i) Thull SaifL ROAD Sajjan Bagar Laro to Mirpur Buriro (ii)Jacobabad Thull to Karim Bux via Bahadurpur	26.20															Tenders opening on 11 April 2012
28	Package-5204	Road From Dil Murad Railway Station to Manjhipur	21.90															Tenders opening on 11 April 2012
29	Package-5303	Road from Shikarpur to Rustam	15.80															Tenders opening on 11 April 2012
30	Package-5304 (A)	Road from Sultankot to Jaggan	18.70															Tenders opening on 11 April 2012
31	Package-5304 (B)	(i) Road From Garhi Yasin to Jaggan (ii) Road From Sultankot to Mangrio Wahi	27.80															Tenders opening on 11 April 2012
32	Package-5403	(i) Shahdadkot to Imam Bux Jamali Road (ii) Qubo Saeed Khan to Katchi Pull	23.75															Tenders opening on 11 April 2012
33	Package-5404	(i) Road No: 40803 Kamber - Ghabidero road at point Buthi Lashkar to Kandho (Warah) via Khair Muhammad Buriro, Sabo UC Ghabidero, Taluka Kamber District Larkana (ii) Construction of Road from F.P Bund to Hamal Village	24.60															Tenders opening on 11 April 2012
34	Package-5503	(i). Reconstruction & Rehabilitation of Road K.N Shah-Sita (ii).Road from Indus Highway to Khanpur to Mitto Babar(iii). Road from Ramzan Babar to Khoh Wara Kalhoro	33.05															Tenders opening on 11 April 2012
35	Package-5504	Mehar Nau Goth Road to Shah Panjo	15.99															Tenders opening on 11 April 2012
36	Package-5703A	Road from Sujawal -Chuhar Jamali Mile	12.00															Tenders opening on 11 April 2012
37	Package-5703B	Road from Sujawal -Chuhar Jamali Mile	12.81															Tenders opening on 11 April 2012
38	Package-5709A	Road from Mirpur -Bathoro -Jati	16.00															Tenders opening on 11 April 2012
39	Package-5709B	Road from Mirpur -Bathoro -Jati	19.19															Tenders opening on 11 April 2012
40	Package-5705	Road from Jati to Raj Malak	18.29															Tenders opening on 11 April 2012
41	Package-5707 A	Road from Sujawal Daro via Belo	16.00															Tenders opening on 11 April 2012
42	Package-	Road from Sujawal Daro via Belo	16.01															Tenders

## SUMMARY OF CONSTRUCTION CONTRACTS FOR PRIORITY I, II &amp; III Month of April-2012

S #	Contract	Road	Length (KM)	Contractor	Contract Cost (M PKR)	Duration (Months)	Commencement Date	Completion Date	Elapsed Time	Planned Progress by % age	Achieved Progress by % age	% age Lag/ Ahead	Last reported progress %age	Cumulative cost of work verified	%age of the total cost	Schedule Performance Index (SPI)	Cost Performance Index (CPI)	Remarks
<b>Priority - I Roads</b>																		
1	Package- 5201 (A)	Road from Jacobabad to Thull	17.00	M/s A.Z Builders	228.33	12	3-Feb-12	28-Jan-13	25.00%	15.02%	17.10%	2.08% ahead	10.50%	28.219	12.36%	155.44	Ahead of Schedule	164.96 Under Budget
2	Package- 5201 (B)	Road from Jacobabad to Thull	18.30	M/S Shahruxh (Jv)	245.08	12	9-Feb-12	3-Feb-13	25.00%	14.56%	15.25%	0.69% ahead	10.15%	★ 58.42	23.84%	120.10	Ahead of Schedule	64.42 Over Budget
3	Package- 5202	Road from Jacobabad – Dodapur to Garhi Khairo	32.00	M/s D. Baloch	495.75	18	9-Feb-12	2-Aug-13	16.67%	11.26%	15.25%	3.99% ahead	8.25%	★ 83.802	16.90%	160.19	Ahead of Schedule	92.96 Over Budget
4	Package- 5203	Road from Jacobabad – Dodapur to Garhi Khairo	27.10	M/s D. Baloch	402.74	15	3-Feb-12	28-Apr-13	20.00%	12.36%	13.12%	0.76% ahead	8.50%	★ 70.132	17.41%	118.88	Ahead of Schedule	74.90 Over Budget
5	Package- 5302	Road from Humayun to Thull Bypass i/c Link to Mian-jo-Goth	26.00	M/s Umer Jan & Co.,	375.47	15	3-Feb-12	28-Apr-13	20.00%	5.59%	15.25%	9.66% ahead	8.80%	19.437	5.18%	289.99	Ahead of Schedule	321.60 Under Budget
6	Package- 5401	Road from Shahdadkot to Garhi Khairo Road	22.30	M/s Lilley Int'l	335.762	15	3-Feb-12	28-Apr-13	20.00%	8.95%	10.50%	1.55% ahead	7.50%	★ 69.405	20.67%	123.59	Ahead of Schedule	49.96 Over Budget
7	Package- 5506	Road from Mehar to Faridabad	23.40	M/s NKB	319.766	12	9-Feb-12	8-Feb-13	25.00%	6.53%	9.55%	3.02% ahead	1.60%	0	0.00%	103.13	Ahead of Schedule	0.00 Over Budget IPC Nil
8	Package- 5602	Road from Sehwan to Jhangara	16.69	M/s Sh.Abdul R.Co	286.47	12	3-Feb-12	2-Feb-13	25.00%	8.36%	8.39%	0.03% ahead	1.85%	0	0.00%	100.22	Ahead of Schedule	0.00 Over Budget IPC Nil
9	Package- 5701	Road from Sujawal to Jati	35.40	M/s Zargoos Ent.	395.39	18	14-Feb-12	7-Aug-13	16.67%	6.17%	3.59%	-2.58% lag	0.30%	0	0.00%	80.01	Behind Schedule	0.00 Over Budget IPC Nil
10	Package- 5704	Road from Jati to Chhachh Jehan Khan	25.75	M/s RMS	337.88	15	9-Feb-12	3-May-13	20.00%	10.49%	10.55%	0.06% ahead	1.52%	★ 60.123	17.79%	20.54	Behind Schedule	0.85 Over Budget
243.94																		
<b>Priority - II Roads</b>																		
11	Package- 5101	Reconstruction & Rehabilitation of Roads in District Kashmore Road From Ghouspur to	19.20	M/s Umer Jan & Co.,	239.35	12	28-Mar-12	22-Mar-13	8.33%	2.58%	2.85%	0.27% ahead	0.00%	0	0.00%	110.53	Ahead of Schedule	0.00 Over Budget
12	Package- 5206 (A)	Road from Thull to Saifal	13.63	M/s D. Baloch	172.29	12	20-Mar-12	15-Mar-13	9.17%	2.09%	2.15%	0.06% ahead	0.00%	0	0.00%	102.91	Ahead of Schedule	0.00 Over Budget
13	Package- 5206 (B)	Road from Thull to Saifal	10.37	M/s D. Baloch	137.79	12	20-Mar-12	15-Mar-13	9.17%	1.75%	1.85%	0.10% ahead	0.00%	0	0.00%	105.81	Ahead of Schedule	0.00 Over Budget
14	Package- 5301 (A)	Road from Khanpur to Thull	14.10	M/s A.Z Builders	172.35	12	5-Apr-12	30-Mar-13	8.33%	1.85%	6.10%	4.25% ahead	0.00%	0	0.00%	329.93	Ahead of Schedule	0.00 Over Budget
15	Package- 5301 (B)	Road from Khanpur to Thull via Rahimabad	14.70	M/s Umer Jan & Co.,	210.75	12	28-Mar-12	22-Mar-13	8.33%	0.93%	5.10%	4.17% ahead	0.00%	0	0.00%	548.75	Ahead of Schedule	0.00 Over Budget
16	Package- 5402 (A)	Road from Sujawal to Garhi Khairo	14.00	M/s Lilley Int'l	214.42	12	20-Mar-12	15-Mar-13	9.17%	2.59%	2.91%	0.32% ahead	0.00%	0	0.00%	112.36	Ahead of Schedule	0.00 Over Budget
17	Package- 5402 (B)	Road from Sujawal to Garhi Khairo	14.00	M/s Lilley Int'l	208.38	12	20-Mar-12	15-Mar-13	9.17%	2.47%	2.55%	0.08% ahead	0.00%	9.977	4.79%	281.93	Ahead of Schedule	148.55 Under Budget
19	Package- 5501	Road from Dadu to Johi road	15.37	M/s Stnd.Const C	256.771	12	5-Apr-12	4-Apr-13	8.33%	0.50%	0.61%	0.11% ahead	0.00%	0	0.00%	100.41	Ahead of Schedule	0.00 Over Budget
18	Package-5502	Reconstruction & Rehabilitation of Roads in District Dadu (i)K.N Shah - Burira - Gozo Road	27.78	M/s NKB	373.699	15	28-Mar-12	25-Jun-13	6.67%	0.80%	0.85%	0.05% ahead	0.00%	0	0.00%	222.90	Ahead of Schedule	0.00 Over Budget
20	Package-5505 (A)	Road Mehar to Warah via Gaji Khawar	14.50	M/S Shahruxh (Jv)	158.379	12	22-Mar-12	21-Mar-13	8.33%	3.00%	3.29%	0.29% ahead	0.00%	0	0.00%	164.68	Ahead of Schedule	0.00 Over Budget
21	Package-5505 (B)	Road Mehar to Warah via Gaji Khawar	14.49	M/S Shahruxh (Jv)	173.907	12	22-Mar-12	21-Mar-13	9.17%	1.50%	1.60%	0.10% ahead	0.00%	0	0.00%	154.36	Ahead of Schedule	0.00 Over Budget
22	Package-5603	Road from Indus Highway to Bubak via Jaheja Khabrote (ii) Road from Indus Highway to Bhan Bye Pass to Chhinni	37.46	M/s Qasim Khan	496.07	18	28-Mar-12	26-Sep-13	5.56%	0.20%	0.23%	0.03% ahead	0.00%	★ 74.409	15.00%	268.29	Ahead of Schedule	0.41 Over Budget
23	Package-5604	Road from Indus Highway @ Tando Shahbazi Railway X-ing to Dadu	31.40	M/s Ibrahim Khan	309.63	18	5-Apr-12	26-Sep-13	5.56%	0.49%	1.12%	0.63% ahead	0.00%	0	0.00%	295.68	Ahead of Schedule	0.00 Over Budget
24	Package- 5702	Road from Chuhr Jamali-Chach Jehan via Ladoon link to Shah vageeg	21.23	M/s Kazi Nisar.Co	251.6	15	30-Mar-12	27-Jun-13	6.67%	0.85%	0.90%	0.05% ahead	0.00%	0	0.00%	110.87	Ahead of Schedule	0.00 Over Budget
25	Package-5706 (A)	Road from Sujawal -Bathoro-Bulri Shah Karim	24.50	M/s Friends Entr.	275.3	15	2-Apr-12	25-Jun-13	6.67%	0.75%	1.00%	0.25% ahead	0.00%	0	0.00%	103.11	Ahead of Schedule	0.00 Over Budget
26	Package-5706 (B)	Road from Sujawal -Bathoro-Bulri Shah Karim	17.00	M/s Haji Sirajuddin	186.5	12	5-Apr-12	30-Mar-13	8.33%	3.00%	5.00%	2.00% ahead	0.00%	0	0.00%	155.45	Ahead of Schedule	0.00 Over Budget
303.73																		

★ Cumulative cost of work verified included mobilization advance paid for contractor

**SUMMARY OF CONSTRUCTION CONTRACTS FOR PRIORITY I, II & III Month of April-2012**

S #	Contract	Road	Length (KM)	Contractor	Contract Cost (M PKR)	Duration (Months)	Commencement Date	Completion Date	Elapsed Time	Planned Progress by % age	Achieved Progress by % age	% age Lag/Ahead	Last reported progress %age	Cumulative cost of work verified	%age of the total cost	Schedule Performance Index (SPI)	Cost Performance Index (CPI)	Remarks
<b>Priority - III Roads</b>																		
27	Package- 5205	Reconstruction & Rehabilitation of Roads in District Jacobabad(i) Thull SaifL ROAD Sajjan Bagar Laro to Mirpur Buriro (ii)Jacobabad Thull to Karim Bux via	26.20	M/s Umer Jan & Co.,	319.02													Tenders opening on 11 April 2012
28	Package-5303	Road from Shikarpur to Rustam	15.80	M/s Maqbool Associate	212.90													Tenders opening on 11 April 2012
29	Package-5304 (A)	Road from Sultankot to Jaggan	18.70	M/s D. Baloch	212.25													Tenders opening on 11 April 2012
30	Package- 5403	(i) Shahdadkot to Imam Bux Jamali Road (ii) Qubo Saeed Khan to Katchi Pull	23.75	M/S Shahrukh (Jv)	262.74													Tenders opening on 11 April 2012
31	Package- 5504	Mehar Nau Goth Road to Shah Panjo	19.30	M/s N K B	209.36													Tenders opening on 11 April 2012
32	Package-5703A	Road from Sujawal -Chuhar Jamali Mile	12.00	M/s Qasim Khan	142.80													Tenders opening on 11 April 2012
33	Package-5703B	Road from Sujawal -Chuhar Jamali Mile	12.82	M/s Kazi Nisar.Co	155.86													Tenders opening on 11 April 2012
34	Package-5705	Road from Jati to Raj Malak	18.29	M/s R M S	246.83													Tenders opening on 11 April 2012
37	Package-5707 A	Road from Sujawal Daro via Belo	16.00	M/s Echo West Inter.	207.27													Tenders opening on 11 April 2012
38	Package-5707 B	Road from Sujawal Daro via Belo	16.10	M/s Stnd.Const C	235.98													Tenders opening on 11 April 2012
35	Package-5709A	Road from Mirpur -Bathoro -Jati	16.00	M/s Haji Sirajuddin	167.65													Tenders opening on 11 April 2012
36	Package-5709B	Road from Mirpur -Bathoro -Jati	19.19	M/S Shahrukh (Jv)	225.08													Tenders opening on 11 April 2012
			<b>214.15</b>															

## SUMMARY OF CONSTRUCTION CONTRACTS FOR PRIORITY I, II &amp; III Month of May-2012

S #	Contract	Road	Length (KM)	Contractor	Contract Cost (M PKR)	Duration (Months )	Commencement Date	Completion Date	Elapsed Time	Planned Progress by % age	Achieved Progress by % age	% age Lag/ Ahead	Last reported progress %age	Commulative cost of work verified	%age of the total cost	Schedule Performance Index (SPI)	Cost Performance Index (CPI)	Remarks		
Priority - I Roads																				
1	Package- 5201 (A)	Road from Jacobabad to Thull	17.00	M/s A.Z Builders	228.33	12	3-Feb-12	28-Jan-13	33.33%	21.33%	23.60%	2.27% ahead	10.50%	28.219	12.36%	110.57	Ahead of Schedule	142.90	Under Budget	
2	Package- 5201 (B)	Road from Jacobabad to Thull	18.30	M/s Shahruxh (Jv)	245.08	12	9-Feb-12	3-Feb-13	33.33%	21.08%	21.50%	0.42% ahead	10.15%	★ 58.42	23.84%	102.06	Ahead of Schedule	90.19	Over Budget	
3	Package- 5202	Road from Jacobabad – Dodapur to Garhi Khairo	32.00	M/s D. Baloch	495.75	18	9-Feb-12	2-Aug-13	22.22%	15.80%	19.50%	3.70% ahead	8.25%	★ 83.802	16.90%	123.43	Ahead of Schedule	71.92	Over Budget	
4	Package- 5203	Road from Jacobabad – Dodapur to Garhi Khairo	27.10	M/s D. Baloch	402.74	15	3-Feb-12	28-Apr-13	26.67%	17.63%	18.61%	0.98% ahead	8.50%	★ 70.132	17.41%	105.53	Ahead of Schedule	65.52	Over Budget	
5	Package- 5302	Road from Humayun to Thull Bypass i/c Link to Mian-jo-Goth	26.00	M/s Umer Jan & Co.,	375.47	15	3-Feb-12	28-Apr-13	26.67%	10.19%	20.50%	10.31% ahead	8.80%	19.437	5.18%	201.18	Ahead of Schedule	133.33	Under Budget	
6	Package- 5401	Road from Shahdadkot to Garhi Khairo Road	22.30	M/s Lilley Int'l	335.762	15	3-Feb-12	28-Apr-13	26.67%	14.55%	16.50%	1.95% ahead	7.50%	★ 69.405	20.67%	113.41	Ahead of Schedule	57.73	Over Budget	
7	Package- 5506	Road from Mehar to Faridabad	23.40	M/s NKB	319.766	12	9-Feb-12	8-Feb-13	25.00%	6.53%	9.55%	3.02% ahead	1.60%	0	0.00%	103.13	Ahead of Schedule	0.00	Over Budget	IPC Nil
8	Package- 5602	Road from Sehwan to Jhangara	16.69	M/s Sh.Abdul R.Co	286.47	12	3-Feb-12	2-Feb-13	25.00%	8.36%	8.39%	0.03% ahead	1.85%	0	0.00%	100.22	Ahead of Schedule	0.00	Over Budget	IPC Nil
9	Package- 5701	Road from Sujawal to Jati	35.40	M/s Zargoon.Ent	395.39	18	14-Feb-12	7-Aug-13	16.67%	6.17%	3.59%	-2.58% lag	0.30%	0	0.00%	80.01	Behind Schedule	0.00	Over Budget	IPC Nil
10	Package- 5704	Road from Jati to Chhachh Jehan Khan	25.75	M/s RMS	337.88	15	9-Feb-12	3-May-13	20.00%	10.49%	10.55%	0.06% ahead	1.52%	★ 60.123	17.79%	20.54	Behind Schedule	0.85	Over Budget	
		243.94																		
Priority - II Roads																				
11	Package- 5101	Reconstruction & Rehabilitation of Roads in District Kashmore Road From Ghouspur to Tangwani	19.20	M/s Umer Jan & Co.,	239.351	12	28-Mar-12	22-Mar-13	16.67%	9.09%	7.05%	-2.04% lag	0.00%	0	0.00%	77.60	Behind Schedule	0.00	Over Budget	
12	Package- 5206 (A)	Road from Thull to Saifal	13.63	M/s D. Baloch	172.293	12	20-Mar-12	15-Mar-13	16.67%	5.58%	6.22%	0.64% ahead	0.00%	0	0.00%	111.42	Ahead of Schedule	0.00	Over Budget	
13	Package- 5206 (B)	Road from Thull to Saifal	10.37	M/s D. Baloch	137.794	12	20-Mar-12	15-Mar-13	16.67%	4.73%	5.15%	0.42% ahead	0.00%	0	0.00%	108.88	Ahead of Schedule	0.00	Over Budget	
14	Package- 5301 (A)	Road from khanpur to Thull	14.10	M/s A.Z Builders	172.35	12	5-Apr-12	30-Mar-13	16.67%	4.34%	8.20%	3.86% ahead	0.00%	0	0.00%	189.15	Ahead of Schedule	0.00	Over Budget	
15	Package- 5301 (B)	Road from khanpur to Thull via Rahimabad	14.70	M/s Umer Jan & Co.,	210.746	12	28-Mar-12	22-Mar-13	16.67%	3.42%	6.75%	3.33% ahead	0.00%	0	0.00%	197.38	Ahead of Schedule	0.00	Over Budget	
16	Package- 5402 (A)	Road from Sujawal to Garhi Khairo	14.00	M/s Lilley Int'l	214.419	12	20-Mar-12	15-Mar-13	16.67%	6.27%	7.15%	0.88% ahead	0.00%	0	0.00%	114.23	Ahead of Schedule	0.00	Over Budget	
17	Package- 5402 (B)	Road from Sujawal to Garhi Khairo	14.00	M/s Lilley Int'l	208.379	12	20-Mar-12	15-Mar-13	16.67%	6.04%	15.60%	9.56% ahead	0.00%	9.977	4.79%	258.15	Ahead of Schedule	109.73	Under Budget	
19	Package- 5501	Road from Dadu to Johi road	15.37	M/s Strd.Const C	256.771	12	5-Apr-12	4-Apr-13	8.33%	0.50%	0.61%	0.11% ahead	0.00%	0	0.00%	100.41	Ahead of Schedule	0.00	Over Budget	
18	Package-5502	Reconstruction & Rehabilitation of Roads in District Dadu (i)K.N Shah - Burira - Gozo Road. (ii) K.N	27.78	M/s NKB	373.699	15	28-Mar-12	25-Jun-13	6.67%	0.80%	0.85%	0.05% ahead	0.00%	0	0.00%	222.90	Ahead of Schedule	0.00		
20	Package-5505 (A)	Road Mehar to Warah via Gaji Khawar	14.50	M/S Shahruxh (Jv)	158.379	12	22-Mar-12	21-Mar-13	8.33%	3.00%	3.29%	0.29% ahead	0.00%	0	0.00%	164.68	Ahead of Schedule	0.00	Over Budget	
21	Package-5505 (B)	Road Mehar to Warah via Gaji Khawar	14.49	M/S Shahruxh (Jv)	173.907	12	22-Mar-12	21-Mar-13	9.17%	1.50%	1.60%	0.10% ahead	0.00%	0	0.00%	154.36	Ahead of Schedule	0.00	Over Budget	
22	Package-5603	Road from Indus Highway to Bubak via Jaheja Khabrote (i) Road from Indus Highway to Bhan Bye Pass to Chhlini	37.46	M/s Qasim Khan	496.07	18	28-Mar-12	26-Sep-13	5.56%	0.20%	0.23%	0.03% ahead	0.00%	★ 74.409	15.00%	268.29	Ahead of Schedule	0.41	Over Budget	
23	Package-5604	Road from Indus Highway @ Tando Shahbazi Railway X-ing to Dadu	31.40	M/s Ibrahim Khan	309.63	18	5-Apr-12	26-Sep-13	5.56%	0.49%	1.12%	0.63% ahead	0.00%	0	0.00%	295.68	Ahead of Schedule	0.00	Over Budget	
24	Package- 5702	Road from Chuhr Jamali-Chach Jehan via Ladvoon link to Shah vageeo	21.23	M/s Kazi Nisar.Co	251.595	15	30-Mar-12	27-Jun-13	6.67%	0.85%	0.90%	0.05% ahead	0.00%	0	0.00%	110.87	Ahead of Schedule	0.00	Over Budget	
25	Package-5706 (A)	Road from Sujawal -Bathoro-Bulri Shah Karim	24.50	M/s Friends Entr.	275.304	15	2-Apr-12	25-Jun-13	6.67%	0.75%	1.00%	0.25% ahead	0.00%	0	0.00%	103.11	Ahead of Schedule	0.00	Over Budget	
26	Package-5706 (B)	Road from Sujawal -Bathoro-Bulri Shah Karim	17.00	M/s Haji Sirajuddin	186.501	12	5-Apr-12	30-Mar-13	8.33%	3.00%	5.00%	2.00% ahead	0.00%	0	0.00%	155.45	Ahead of Schedule	0.00	Over Budget	
		303.73																		
★ Commulative cost of work verified included mobilization advance paid for contractor																				

**SUMMARY OF CONSTRUCTION CONTRACTS FOR PRIORITY I, II & III Month of May-2012**

S #	Contract	Road	Length (KM)	Contractor	Contract Cost (M PKR)	Duration (Months)	Commencement Date	Completion Date	Elapsed Time	Planned Progress by % age	Achieved Progress by % age	% age Lag/ Ahead	Last reported progress %age	Commulative cost of work verified	%age of the total cost	Schedule Performance Index (SPI)	Cost Performance Index (CPI)	Remarks
<b>Priority - III Roads</b>																		
27	Package- 5205	Reconstruction & Rehabilitation of Roads in District Jacobabad(i) Thull Salil ROAD Sajjan Bagar Laro to Mirpur Buriro (ii)Jacobabad Thull to Karim Bux via Bahadurpur	26.20	M/s Umer Jan & Co.,	319.02													Tenders opening on 11 April 2012
28	Package-5303	Road from Shikarpur to Rustam	15.80	M/s Maqbool Associate	212.90													Tenders opening on 11 April 2012
29	Package-5304 (A)	Road from Sultankot to Jaggan	18.70	M/s D. Baloch	212.25													Tenders opening on 11 April 2012
30	Package- 5403	(i) Shahdadkot to Imam Bux Jamali Road (ii) Qubo Saeed Khan to Katchi Pull	23.75	M/S Shahrukh (Jv)	262.74													Tenders opening on 11 April 2012
31	Package- 5504	Mehar Nau Goth Road to Shah Panjo	19.30	M/s N K B	209.36													Tenders opening on 11 April 2012
32	Package-5703A	Road from Sujawal -Chuhar Jamali Mile	12.00	M/s Qasim Khan	142.80													Tenders opening on 11 April 2012
33	Package-5703B	Road from Sujawal -Chuhar Jamali Mile	12.82	M/s Kazi Nisar.Co	155.86													Tenders opening on 11 April 2012
34	Package-5705	Road from Jati to Raj Malak	18.29	M/s R M S	246.83													Tenders opening on 11 April 2012
37	Package-5707 A	Road from Sujawal Daro via Belo	16.00	M/s Echo West Inter.	207.27													Tenders opening on 11 April 2012
38	Package-5707 B	Road from Sujawal Daro via Belo	16.10	M/s Strd.Const C	235.98													Tenders opening on 11 April 2012
35	Package-5709A	Road from Mirpur -Bathoro -Jati	16.00	M/s Haji Sirajuddin	167.65													Tenders opening on 11 April 2012
36	Package-5709B	Road from Mirpur -Bathoro -Jati	19.19	M/S Shahrukh (Jv)	225.08													Tenders opening on 11 April 2012
			<b>214.15</b>		<b>2,597.73</b>													

761.82

## SUMMARY OF CONSTRUCTION CONTRACTS FOR PRIORITY I, II &amp; III Month of June-2012

S #	Contract	Road	Length (KM)	Contractor	Contract Cost (M PKR)	Duration (Months )	Commencement Date	Completion Date	Elapsed Time	Planned Progress by % age	Achieved Progress by % age	% age Lag/ Ahead	Last reported progress %age	Cumulative cost of work verified	%age of the total cost	Schedule Performance Index (SPI)	Cost Performance Index (CPI)		
Priority - I Roads																			
1	Package- 5201 (A)	Road from Jacobabad to Thull	17.00	M/s A.Z Builders	228.33	12	3-Feb-12	28-Jan-13	41.67%	32.33%	32.50%	0.17% ahead	23.60%	47.05	20.61%	100.77	Ahead of Schedule	172.80	Under Budget
2	Package- 5201 (B)	Road from Jacobabad to Thull	18.30	M/s Shahrukh (Jv)	245.08	12	9-Feb-12	3-Feb-13	39.17%	31.08%	25.14%	-5.94% lag	21.50%	★82.577	33.69%	80.88	Behind Schedule	75.11	Over Budget
3	Package- 5202	Road from Jacobabad – Dodapur to Garhi Khairo	32.00	M/s D. Baloch	495.75	18	9-Feb-12	2-Aug-13	26.11%	22.13%	27.11%	4.98% ahead	19.50%	★195.242	39.38%	121.55	Ahead of Schedule	68.88	Over Budget
4	Package- 5203	Road from Jacobabad – Dodapur to Garhi Khairo	27.10	M/s D. Baloch	402.74	15	3-Feb-12	28-Apr-13	33.33%	25.63%	26.10%	0.47% ahead	18.61%	★44.321	35.83%	101.89	Ahead of Schedule	73.28	Over Budget
5	Package- 5302	Road from Humayun to Thull Bypass i/c Link to Mian-jo-Goth	26.00	M/s Umer Jan & Co.,	375.47	15	3-Feb-12	28-Apr-13	33.33%	18.73%	26.74%	8.01% ahead	21.50%	89.747	23.90%	143.54	Ahead of Schedule	116.32	Under Budget
6	Package- 5401	Road from Shahdadkot to Garhi Khairo Road	22.30	M/s Lilley Int'l	335.762	15	3-Feb-12	28-Apr-13	33.33%	22.80%	23.50%	0.70% ahead	16.50%	★112.925	33.63%	102.81	Ahead of Schedule	71.50	Over Budget
7	Package- 5506	Road from Mehar to Faridabad	23.40	M/s NKB	319.766	12	9-Feb-12	8-Feb-13	39.17%	17.49%	31.96%	14.47% ahead	20.67%	97.835	30.60%	225.79	Ahead of Schedule	117.61	Under Budget
8	Package- 5602	Road from Sehwan to Jhangara	16.69	M/s Sh.Abdul R.Co	286.47	12	3-Feb-12	2-Feb-13	41.67%	16.91%	17.86%	0.95% ahead	11.86%	28.033	9.79%	133.01	Ahead of Schedule	188.76	Under Budget
9	Package- 5701	Road from Sujawal to Jati	35.40	M/s Zargoos.Ent	395.39	18	14-Feb-12	7-Aug-13	25.00%	22.18%	21.15%	-1.03% lag	11.60%	25.656	6.49%	75.65	Behind Schedule	208.09	Under Budget
10	Package- 5704	Road from Jati to Chhachh Jehan Khan	25.75	M/s RMS	337.88	15	9-Feb-12	3-May-13	31.33%	31.01%	26.00%	-5.01% lag	21.53%	★106.4	31.49%	69.41	Behind Schedule	56.25	Over Budget
	243.94														929.786				
Priority - II Roads																			
11	Package- 5101	Reconstruction & Rehabilitation of Roads in District Kashmore Road From Ghouspur to	19.20	M/s Umer Jan & Co.,	239.351	12	28-Mar-12	22-Mar-13	25.00%	16.17%	10.50%	-5.67% lag	7.05%	0	0.00%	65.02	Behind Schedule	0.00	Over Budget
12	Package- 5206 (A)	Road from Thull to Saifal	13.63	M/s D. Baloch	172.293	12	20-Mar-12	15-Mar-13	27.75%	10.83%	15.10%	4.27% ahead	6.22%	20.161	11.70%	140.99	Ahead of Schedule	123.79	Under Budget
13	Package- 5206 (B)	Road from Thull to Saifal	10.37	M/s D. Baloch	137.794	12	20-Mar-12	15-Mar-13	27.75%	9.61%	11.15%	1.54% ahead	5.15%	0	0.00%	116.01	Ahead of Schedule	0.00	Over Budget
14	Package- 5301 (A)	Road from khanpur to Thull	14.10	M/s A.Z Builders	172.35	12	5-Apr-12	30-Mar-13	25.00%	9.10%	13.16%	4.06% ahead	8.20%	17.476	10.14%	144.75	Ahead of Schedule	129.81	Under Budget
15	Package- 5301 (B)	Road from khanpur to Thull via Rahimabad	14.70	M/s Umer Jan & Co.,	210.746	12	28-Mar-12	22-Mar-13	25.00%	8.18%	10.85%	2.67% ahead	6.75%	17.933	8.51%	130.73	Ahead of Schedule	127.55	Under Budget
16	Package- 5402 (A)	Road from Sujawal to Garhi Khairo	14.00	M/s Lilley Int'l	214.419	12	20-Mar-12	15-Mar-13	27.75%	11.61%	20.35%	8.74% ahead	7.15%	36.115	16.84%	175.31	Ahead of Schedule	120.81	Under Budget
17	Package- 5402 (B)	Road from Sujawal to Garhi Khairo	14.00	M/s Lilley Int'l	208.379	12	20-Mar-12	15-Mar-13	27.75%	11.26%	24.79%	13.53% ahead	15.60%	47.91	22.99%	220.18	Ahead of Schedule	106.75	Under Budget
19	Package- 5501	Road from Dadu to Johi road	15.37	M/s Stnd.Const C	256.771	12	5-Apr-12	4-Apr-13	25.00%	7.15%	5.36%	-1.79% lag	2.70%	8.899	3.47%	106.95	Ahead of Schedule	186.87	Under Budget
18	Package-5502	Reconstruction & Rehabilitation of Roads in District Dadu (i)K.N Shah - Burira - Gozo Road	27.78	M/s NKB	373.699	15	28-Mar-12	25-Jun-13	20.00%	4.57%	17.25%	12.68% ahead	2.83%	43.027	11.51%	466.51	Ahead of Schedule	106.79	Under Budget
20	Package-5505 (A)	Road Mehar to Warah via Gaji Khawar	14.50	M/S Shahrukh (Jv)	158.379	12	22-Mar-12	21-Mar-13	27.50%	7.00%	13.50%	6.50% ahead	5.50%	17.501	11.05%	101.43	Ahead of Schedule	107.30	Under Budget
21	Package-5505 (B)	Road Mehar to Warah via Gaji Khawar	14.49	M/S Shahrukh (Jv)	173.907	12	22-Mar-12	21-Mar-13	27.50%	8.60%	8.64%	0.04% ahead	4.65%	8.986	5.17%	140.66	Ahead of Schedule	130.85	Under Budget
22	Package-5603	Road from Indus Highway to Bubak via Jaheja Khabrote (ii) Road from Indus Highway to Bhan Bye Pass to Chhinni	37.46	M/s Qasim Khan	496.07	18	28-Mar-12	26-Sep-13	16.67%	9.60%	16.11%	6.51% ahead	3.80%	★83.076	16.75%	112.16	Ahead of Schedule	34.23	Over Budget
23	Package-5604	Road from Indus Highway @ Tando Shahbazi Railway X-ing to Dadu	31.40	M/s Ibrahim Khan	309.63	18	5-Apr-12	26-Sep-13	16.67%	6.10%	14.88%	8.78% ahead	2.78%	42.491	13.72%	243.79	Ahead of Schedule	102.21	Under Budget
24	Package- 5702	Road from Chuhar Jamali-Chach Jehan via Ladvoon link to Shah vageeg	21.23	M/s Kazi Nisar.Co	251.595	15	30-Mar-12	27-Jun-13	20.00%	5.81%	7.06%	1.25% ahead	2.70%	★55.499	22.06%	283.56	Ahead of Schedule	24.94	Over Budget
25	Package-5706 (A)	Road from Sujawal -Bathoro-Bulri Shah Karim	24.50	M/s Friends Entr.	275.304	15	2-Apr-12	25-Jun-13	20.00%	5.55%	7.39%	1.84% ahead	2.21%	17.371	6.31%	187.82	Ahead of Schedule	135.82	Under Budget
26	Package-5706 (B)	Road from Sujawal -Bathoro-Bulri Shah Karim	17.00	M/s Haji Sirajuddin	186.501	12	5-Apr-12	30-Mar-13	25.00%	15.49%	16.68%	1.19% ahead	9.80%	27.182	14.57%	212.71	Ahead of Schedule	117.39	Under Budget
			303.73											443.627					

★ Cumulative cost of work verified included mobilization advance paid for contractor



**SUMMARY OF CONSTRUCTION CONTRACTS FOR PRIORITY I , II & III Month of June-2012**

S #	Contract	Road	Length (KM)	Contractor	Contract Cost (M PKR)	Duration (Months)	Commencement Date	Completion Date	Elapsed Time	Planned Progress by % age	Achieved Progress by % age	% age Lag/ Ahead	Last reported progress %age	Commulative cost of work verified	%age of the total cost	Schedule Performance Index (SPI)	Cost Performance Index (CPI)
<b>Priority - III Roads</b>																	
27	Package- 5205	Reconstruction & Rehabilitation of Roads in District Jacobabad(i) Thull Saiil ROAD Sajjan Bagar Laro to Mirpur Buriro (ii)Jacobabad Thull to Karim Bux via Bahadurpur	26.20	M/s Umer Jan & Co.,	319.02	15	26-Jun-12	18-Sep-12									
28	Package-5303	Road from Shikarpur to Rustam	15.80	M/s Maqbool Associate	212.90	12	15-Jun-12	9-Jun-12									
29	Package-5304 (A)	Road from Sultankot to Jaggan	18.70	M/s D. Baloch	212.25	12	30-Jun-12	24-Jun-13									
30	Package- 5403	(i) Shahdadkot to Imam Bux Jamali Road (ii) Qubo Saeed Khan to Katchi Pull	23.75	M/S Shahrukh (Jv)	262.74	15	30-Jun-12	22-Sep-13									
31	Package- 5404	Kamber-Ghabidearo road at Point Buthi Lashkar to Khando (Warah)	24.60	M/s Echo West Inter.	255.86												
32	Package- 5503	K.N Shah to Sita Road	33.05	M/s FWO	389.81												
33	Package- 5504	Mehar Nau Goth Road to Shah Panjo	19.30	M/s N K B	209.36	12	8-Jun-12	7-Jun-13									
34	Package-5703A	Road from Sujawal -Chuhar Jamali Mile	12.00	M/s Qasim Khan	142.80	12	8-Jun-12	2-Jun-13									
35	Package-5703B	Road from Sujawal -Chuhar Jamali Mile	12.82	M/s Kazi Nisar.Co	155.86	12	1-Jun-12	26-May-13						★ 23.379	15.00%		
36	Package-5705	Road from Jati to Raj Malak	18.29	M/s R M S	246.83												
37	Package-5707 A	Road from Sujawal Daro via Belo	16.00	M/s Echo West Inter.	207.27	12	1-Jun-12	31-May-13						★ 31.091	15.00%		
38	Package-5707 B	Road from Sujawal Daro via Belo	16.10	M/s Stnd.Const C	235.98												
39	Package-5709A	Road from Mirpur -Bathoro -Jati	16.00	M/s Haji Sirajuddin	167.65	12	8-Jun-12	2-Jun-13									
40	Package-5709B	Road from Mirpur -Bathoro -Jati	19.19	M/S Shahrukh (Jv)	225.08	12	8-Jun-12	2-Jun-13									
			<b>271.81</b>		3,243.41												

**SUMMARY OF CONSTRUCTION CONTRACTS FOR PRIORITY I , II & III Month of July-2012**

S #	Contract	Road	Length (KM)	Contractor	Contract Cost (M PKR)	Duration (Months)	Commencement Date	Completion Date	Elapsed Time	Planned Progress by % age	Achieved Progress by % age	% age Lag/ Ahead	Last reported progress %age	Commulative cost of work verified (M)	%age of the total cost	Schedule Performance Index (SPI)	Cost Performance Index (CPI)	PCSS	Payment Made by (PKR) in Million	Diff.Cumulative cost of and Payment to Contractor		
Priority - I Roads																						
1	Package-5201 (A)	Road from Jacobabad to Thull	17.00	M/s A.Z Builders	228.33	12	3-Feb-12	28-Jan-13	50.00%	43.11%	43.20%	0.09% ahead	32.50%	65.732	28.79%	100.24	Ahead of Schedule	158.14	Under Budget	0536	63.863	1.869
2	Package-5201 (B)	Road from Jacobabad to Thull	18.30	M/S Shahrukh (Jv)	245.08	12	9-Feb-12	3-Feb-13	47.50%	40.95%	41.02%	0.07% ahead	25.14%	45.816	18.69%	85.68	Behind Schedule	189.89	Under Budget	0537	45.816	0.000
3	Package-5202	Road from Jacobabad – Dodapur to Garhi Khairo	32.00	M/s D. Baloch	495.75	18	9-Feb-12	2-Aug-13	31.67%	28.71%	30.15%	1.44% ahead	27.11%	120.88	24.38%	105.08	Ahead of Schedule	123.78	Under Budget	0538	120.880	0.000
4	Package-5203	Road from Jacobabad – Dodapur to Garhi Khairo	27.10	M/s D. Baloch	402.74	15	3-Feb-12	28-Apr-13	40.00%	33.63%	30.05%	-3.58% lag	26.10%	83.91	20.83%	89.43	Behind Schedule	145.50	Under Budget	0531	83.310	0.600
5	Package-5302	Road from Humayun to Thull Bypass i/c Link to Mian-jo-Goth	26.00	M/s Umer Jan & Co.,	375.47	15	3-Feb-12	28-Apr-13	40.00%	28.01%	34.28%	6.27% ahead	26.74%	89.747	23.90%	122.40	Ahead of Schedule	148.33	Under Budget	0528	89.747	0.000
6	Package-5401	Road from Shahdadkot to Garhi Khairo Road	22.30	M/s Lilley Int'l	335.762	15	3-Feb-12	28-Apr-13	40.00%	32.65%	33.50%	0.85% ahead	23.50%	71.86	21.40%	102.63	Ahead of Schedule	156.52	Under Budget	0530	62.562	9.298
7	Package-5506	Road from Mehar to Faridabad	23.40	M/s NKB	319.766	12	9-Feb-12	8-Feb-13	47.50%	25.67%	42.60%	16.93% ahead	31.96%	97.835	30.60%	245.62	Ahead of Schedule	158.89	Under Budget	0540	97.835	0.000
8	Package-5602	Road from Sehwan to Jhangara	16.69	M/s Sh.Abdul R.Co	286.47	12	3-Feb-12	2-Feb-13	50.00%	24.42%	25.64%	1.22% ahead	17.86%	45.648	15.93%	133.69	Ahead of Schedule	144.60	Under Budget	0529	43.886	1.762
9	Package-5701	Road from Sujawal to Jati	35.40	M/s Zargoos.Ent	395.39	18	14-Feb-12	7-Aug-13	30.56%	31.48%	29.40%	-2.08% lag	21.15%	43.256	10.94%	78.01	Behind Schedule	191.80	Under Budget	0541	32.314	10.942
10	Package-5704	Road from Jati to Chhachh Jehan Khan	25.75	M/s RMS	337.88	15	9-Feb-12	3-May-13	38.00%	37.48%	31.66%	-5.83% lag	26.00%	55.721	16.49%	71.73	Behind Schedule	142.33	Under Budget	0539	54.785	0.936
			243.94		3,422.63									720.405								
Priority - II Roads																						
11	Package-5101	Reconstruction & Rehabilitation of Roads in District Kashmore Road From Ghouspur to	19.20	M/s Umer Jan & Co.,	239.351	12	28-Mar-12	22-Mar-13	33.33%	15.27%	11.20%	-4.07% lag	10.50%	0	0.00%	73.46	Behind Schedule			0593		
12	Package-5206 (A)	Road from Thull to Saifal	13.63	M/s D. Baloch	172.293	12	20-Mar-12	15-Mar-13	36.08%	19.63%	19.50%	-0.13% lag	15.10%	20.161	11.70%	99.35	Behind Schedule	161.36	Under Budget	0585	20.161	0.000
13	Package-5206 (B)	Road from Thull to Saifal	10.37	M/s D. Baloch	137.794	12	20-Mar-12	15-Mar-13	36.08%	18.02%	16.86%	-1.16% lag	11.15%	6.746	4.90%	93.61	Behind Schedule	360.84	Under Budget	0584	0	6.746
14	Package-5301 (A)	Road from khanpur to Thull	14.10	M/s A.Z Builders	172.35	12	5-Apr-12	30-Mar-13	33.33%	17.80%	18.50%	0.70% ahead	13.16%	17.476	10.14%	102.25	Ahead of Schedule	181.26	Under Budget	0590	17.476	0.000
15	Package-5301 (B)	Road from khanpur to Thull via Rahimabad	14.70	M/s Umer Jan & Co.,	210.746	12	28-Mar-12	22-Mar-13	33.33%	16.88%	17.10%	0.22% ahead	10.85%	25.861	12.27%	103.07	Ahead of Schedule	133.19	Under Budget	0594	16.64	9.221
16	Package-5402 (A)	Road from Sujawal to Garhi Khairo	14.00	M/s Lilley Int'l	214.419	12	20-Mar-12	15-Mar-13	36.08%	20.19%	20.85%	0.66% ahead	20.35%	36.115	16.84%	103.26	Ahead of Schedule	123.79	Under Budget	0581	34.781	1.334
17	Package-5402 (B)	Road from Sujawal to Garhi Khairo	14.00	M/s Lilley Int'l	208.379	12	20-Mar-12	15-Mar-13	36.08%	19.71%	24.95%	5.24% ahead	24.79%	47.91	22.99%	128.60	Ahead of Schedule	109.16	Under Budget	0580	47.91	0.000
19	Package-5501	Road from Dadu to Johi road	15.37	M/s Strnd.Const C	256.771	12	5-Apr-12	4-Apr-13	33.33%	15.17%	8.99%	-6.19% lag	5.36%	8.899	3.47%	99.27	Behind Schedule	303.91	Under Budget	0588	8.899	0.000
18	Package-5502	Reconstruction & Rehabilitation of Roads in District Dadu (i)K.N.Shah - Burira - Gozo Road	27.78	M/s NKB	373.699	15	28-Mar-12	25-Jun-13	26.67%	7.29%	20.80%	13.51% ahead	17.25%	43.027	11.51%	158.03	Ahead of Schedule	180.07	Under Budget	0589	43.027	0.000
20	Package-5505 (A)	Road Mehar to Warah via Gaji Khawar	14.50	M/S Shahrukh (Jv)	158.379	12	22-Mar-12	21-Mar-13	35.83%	12.00%	14.84%	2.84% ahead	13.50%	17.501	11.05%	104.55	Ahead of Schedule	120.58	Under Budget	0586	17.501	0.000
21	Package-5505 (B)	Road Mehar to Warah via Gaji Khawar	14.49	M/S Shahrukh (Jv)	173.907	12	22-Mar-12	21-Mar-13	35.83%	14.90%	11.00%	-3.90% lag	8.64%	17.325	9.96%	93.88	Behind Schedule	102.24	Under Budget	0587	15.593	1.732
22	Package-5603	Road from Indus Highway to Bubak via Jaheja Khabrote (ii) Road from Indus Highway to Bhan Bye Pass to Chhinni	37.46	M/s Qasim Khan	496.07	18	28-Mar-12	26-Sep-13	22.22%	16.80%	26.98%	10.18% ahead	16.11%	8.667	1.75%	121.84	Ahead of Schedule	555.99	Under Budget	0583	8.667	0.000
23	Package-5604	Road from Indus Highway @ Tando Shahbazi Railway X-ing to Dadu	31.40	M/s Ibrahim Khan	309.63	18	5-Apr-12	26-Sep-13	22.22%	10.59%	18.67%	8.08% ahead	14.88%	42.491	13.72%	231.85	Ahead of Schedule	130.41	Under Budget	0582	42.491	0.000
24	Package-5702	Road from Chuhr Jamali-Chach Jehan via Ladvoon link to Shah vaqeeq	21.23	M/s Kazi Nisar.Co	251.595	15	30-Mar-12	27-Jun-13	26.67%	12.31%	13.52%	1.21% ahead	7.06%	17.760	7.06%	170.57	Ahead of Schedule	154.13	Under Budget	0591	17.76	0.000
25	Package-5706 (A)	Road from Sujawal -Bathoro-Bulri Shah Karim	24.50	M/s Friends Entr.	275.304	15	2-Apr-12	25-Jun-13	26.67%	10.39%	13.64%	3.25% ahead	7.39%	17.371	6.31%	231.99	Ahead of Schedule	210.79	Under Budget	0595	16.495	0.876
26	Package-5706 (B)	Road from Sujawal -Bathoro-Bulri Shah Karim	17.00	M/s Hali Sirajuddin	186.501	12	5-Apr-12	30-Mar-13	33.33%	23.66%	30.23%	6.57% ahead	16.68%	54.685	29.32%	327.68	Ahead of Schedule	111.67	Under Budget	0592	43.681	11.004

SUMMARY OF CONSTRUCTION CONTRACTS FOR PRIORITY I , II & III Month of July-2012

S #	Contract	Road	Length (KM)	Contractor	Contract Cost (M PKR)	Duration (Months)	Commencement Date	Completion Date	Elapsed Time	Planned Progress by % age	Achieved Progress by % age	% age Lag/ Ahead	Last reported progress %age	Commulative cost of work verified (M)	%age of the total cost	Schedule Performance Index (SPI)	Cost Performance Index (CPI)	PCSS	Payment Made by (PKR) in Million	Diff.Cumulative cost of and Payment to Contractor
			303.73		3,837.18									381.995						

**SUMMARY OF CONSTRUCTION CONTRACTS FOR PRIORITY I , II & III Month of July-2012**

S #	Contract	Road	Length (KM)	Contractor	Contract Cost (M PKR)	Duration (Months)	Commencement Date	Completion Date	Elapsed Time	Planned Progress by % age	Achieved Progress by % age	% age Lag/ Ahead	Last reported progress %age	Commulative cost of work verified (M)	%age of the total cost	Schedule Performance Index (SPI)	Cost Performance Index (CPI)	PCSS	Payment Made by (PKR) in Million	Diff.Cumulative cost of and Payment to Contractor
-----	----------	------	-------------	------------	-----------------------	-------------------	-------------------	-----------------	--------------	---------------------------	----------------------------	------------------	-----------------------------	---------------------------------------	------------------------	----------------------------------	------------------------------	------	----------------------------------	---

**Priority - III Roads**

27	Package-5205	Reconstruction & Rehabilitation of Roads in District Jacobabad(i) Thull SafiL ROAD Sajjan Bagar Laro to Mirpur Buriro (ii)Jacobabad Thull to Karim Bux via Bahadurpur	26.20	M/s Umer Jan & Co.,	319.02	15	26-Jun-12	18-Sep-13	7.53%	1.48%	4.69%	3.21% ahead	0	0	0.00%	1117.16	Ahead of Schedule			
28	Package-5303	Road from Shikarpur to Rustam	15.80	M/s Maqbool Associate	212.90	12	15-Jun-12	9-Jun-13	12.50%	1.83%	5.10%	3.27% ahead	0	0	0.00%	201.21	Ahead of Schedule			
29	Package-5304 (A)	Road from Sultankot to Jaggan	18.70	M/s D. Baloch	212.25	12	30-Jun-12	24-Jun-13	8.33%											
30	Package-5403	(i) Shahdadt to Imam Bux Jamali Road (ii) Qubo Saeed Khan to Katchi Pull	23.75	M/S Shahruxh (Jv)	262.74	15	30-Jun-12	22-Sep-13	6.67%											
31	Package-5404	Kamber-Ghabidearo road at Point Buthi Lashkar to Khando (Warah)	24.60	M/s Echo West Inter.	255.86	15	6-Jul-12	28-Sep-13	5.33%											
32	Package-5503	K.N Shah to Sita Road	33.05	M/s FWO	389.81	12	9-Jul-12	3-Jul-13	5.83%											
33	Package-5504	Mehar Nau Goth Road to Shah Panjo	19.30	M/s N K B	209.36	12	8-Jun-12	7-Jun-13	14.42%	1.03%	1.05%	0.02% ahead	0	0	0.00%	106.23	Ahead of Schedule			
34	Package-5703A	Road from Sujawal -Chuhar Jamali Mile	12.00	M/s Qasim Khan	142.80	12	8-Jun-12	2-Jun-13	14.42%	1.83%	2.25%	0.42% ahead	0	0	0.00%	112.36	Ahead of Schedule			
35	Package-5703B	Road from Sujawal -Chuhar Jamali Mile	12.82	M/s Kazi Nisar.Co	155.86	12	1-Jun-12	26-May-13	16.67%	2.30%	3.15%	0.85% ahead	0	0	0.00%	105.42	Ahead of Schedule			
36	Package-5705	Road from Jati to Raj Malak	18.29	M/s R M S	246.83	12	13-Jul-12	12-Jul-13	4.83%	1.41%	1.50%	0.09% ahead	0	0	0.00%	116.10	Ahead of Schedule			
37	Package-5707 A	Road from Sujawal Daro via Belo	16.00	M/s Echo West Inter.	207.27	12	1-Jun-12	31-May-13	16.67%	0.98%	1.00%	0.02% ahead	0	0	0.00%	156.98	Ahead of Schedule			
38	Package-5707 B	Road from Sujawal Daro via Belo	16.10	M/s Stnd.Const C	235.98	12	5-Jul-12	4-Jul-13	6.92%	0.94%	1.00%	0.06% ahead	0	0	0.00%	104.05	Ahead of Schedule			
39	Package-5709A	Road from Mirpur -Bathoro -Jati	16.00	M/s Haji Sirajuddin	167.65	12	8-Jun-12	2-Jun-13	14.42%	0.64%	1.35%	0.71% ahead	0	0	0.00%	102.16	Ahead of Schedule			
40	Package-5709B	Road from Mirpur -Bathoro -Jati	19.19	M/S Shahruxh (Jv)	225.08	12	8-Jun-12	2-Jun-13	14.42%	0.94%	1.65%	0.71% ahead	0	0	0.00%	106.75	Ahead of Schedule			
			<b>271.81</b>		<b>3,243.41</b>															

## Flood Emergency Reconstruction Project Monthly Progress of EMP Compliance (May, 2012)

[illegible]

[illegible]

[illegible]

[illegible]



[illegible]

### Flood Emergency Reconstruction Project - Sindh Monthly Progress Of EMP Compliance (May, 2012)

[illegible]

[illegible]

[illegible]

[illegible][illegible]

[illegible]

## Flood Emergency Reconstruction Project Monthly Progress of EMP Compliance (June, 2012)

[illegible]

[illegible]



[illegible]

[illegible]

[illegible]

**Flood Emergency Reconstruction Project - Sindh**  
**Monthly Progress Of EMP Compliance (June, 2012)**

Priority- II Packages																
Description	5101	5206 A	5206 B	5301 A	5301 B	5402 A	5402 B	5501	5502	5505 A	5505 B	5603	5604	5702	5706 A	5706 B
Camp Site	Status (Yes/No/NA)															
If copy of the Site specific EMP is provided at the camp site?	Yes	Yes	Yes	Yes	Yes	Yes	Yes	Yes	Yes	Yes	Yes	Yes	Yes	Yes	Yes	Yes
If the EMP instructions are understood?	Yes	Yes	Yes	Yes	Yes	Yes	Yes	Yes	Yes	Yes	Yes	Yes	Yes	Yes	Yes	Yes
If any individual is nominated for implementation of EMP?	Yes	Yes	Yes	Yes	Yes	Yes	Yes	No	No	No	No	No	No	Yes	Yes	Yes
If contractor followed the safety precautions as per ILO convention no.62?	Yes	Yes	Yes	Yes	Yes	Yes	Yes	Yes	Yes	Yes	Yes	No	Yes	No (not 100%)	No (not 100%)	No (not 100%)
If contractor provide PPE to workforce?	Yes	Yes	Yes	Yes	Yes	Yes	Yes	Yes	Yes	Yes	Yes	No	Yes	NA	NA	NA
If PPE are used by workforce?	Yes	Yes	Yes	Yes	Yes	Yes	Yes	Yes	Yes	Yes	Yes	No	Yes	NA	NA	NA
If potable water is available to labor?	Yes	Yes	Yes	Yes	Yes	Yes	Yes	Yes	Yes	Yes	Yes	Yes	Yes	Yes	Yes	Yes
If wood used as fuel?	Partially	Partially	Partially	Partially	Partially	Partially	Partially	Partially	Partially	Partially	Partially	Partially	Partially	No	No	No
If LPG cylinders are provided for cooking or heating purposes?	Partially	Partially	Partially	Partially	Partially	Partially	Partially	Partially	Partially	Partially	Partially	Partially	Partially	Yes Natural Gas is available	Yes Natural Gas is available	Yes Natural Gas is available
Any others issues	No	No	No	No	No	No	No	No	No	No	No	No	No	No	No	No
If First Aid Kit is provided at camp and individual nominated for addressing emergency?	Yes	Yes	Yes	Yes	Yes	Yes	Yes	Yes	Yes	Yes	Yes	No	Yes	Yes	Yes	Yes
If campsite is fenced to prevent trespassing?	No	No	No	No	No	No	No	No	No	No	No	No	No	camp is under construction	camp is under construction	camp is under construction
If contractor maintain Environmental Monitoring Record and submit monthly monitoring reports?	Yes	Yes	Yes	No	No	No	No	Partially	Partially	Partially	Partially	No	Partially	Yes	Yes	Yes
If contractor maintain Grievances Log and registered the complaints from community?	Yes	Yes	Yes	Yes	Yes	Yes	Yes	Yes	Yes	Yes	Yes	Yes	Yes	Yes	Yes	Yes
If camp area have adequate natural drainage?	Yes	Yes	Yes	Yes	Yes	Yes	Yes	Yes	Yes	Yes	Yes	Yes	Yes	camp is under construction	camp is under construction	camp is under construction

[illegible]

[illegible]

[illegible]

[illegible]



## Flood Emergency Reconstruction Project Monthly Progress of EMP Compliance (July, 2012)

[illegible]

[illegible]

Priority- I Packages										
Description	5201 A	5201 B	5202	5203	5302	5401	5506	5602	5701	5704
Camp Site	Status (Yes/No/NA)									
If asphalt treatment is carried out during rain?	No	No	No	No	No	No	No	No	No	No
Encroachment Historical/ Cultural/ Archeological sites										
If there is any damage to the Archeological /Religious/Cultural or Historical sites?	No	No	No	No	No	No	No	No	No	No
Impact on Vegetation										
If project activities involve removal of vegetation cover?	No	No	No	No	No	No	Yes	Yes	No	No
If any trees cutting is required on the ROW or shoulders of the road?	No	No	No	No	No	No	Yes	Yes	No	No
Surface and Ground water contamination/Drainage										
If any surface water or ground water contamination reported due to oil spillages, solid waste dumping or asphalt laying?	No	No	No	No	No	No	No	No	N/A	N/A
If asphalt treatment is practiced during rain?	No	No	No	No	No	No	No	No	N/A	N/A
If fuel/Oil storage areas are far away from watercourses?	No	No	No	No	No	No	Yes	Yes	Yes	Yes
If additional Cross drainage is provided?	Yes	Yes	Yes	Yes	Yes	Yes	Yes	Yes	Yes	Yes
Impact on adjacent communities										
If project site is fenced to prevent trespassing?	No	No	No	No	No	No	No	No	Yes	No
Community consultation has been carried out for project activities/concerns?	Yes	Yes	Yes	Yes	Yes	Yes	Yes	Yes	Yes	Yes
If project activities are displayed at proper locations?	Yes	Yes	Yes	Yes	Yes	Yes	Yes	Yes	Yes	Yes
If safety signs are properly placed?	Yes	Yes	Yes	Yes	Yes	Yes	Yes	Yes	Yes	Yes
If any complaint registered in the Grievance Log	No	No	No	No	No	No	No	No	No	No
Dust generation										
If there is any record of dust generation during the environmental monitoring?	No	No	No	No	No	No	No	No	No	No
If proper sprinkling is done on regular basis?	Yes	Yes	Yes	Yes	Yes	Yes	No	Yes	Yes	Yes
Impact on human settlements and wildlife habitat										

[illegible]

### Flood Emergency Reconstruction Project - Sindh Monthly Progress Of EMP Compliance (July, 2012)

[illegible]

[illegible]

[illegible]

[illegible]



[illegible]

**Flood Emergency Reconstruction Project - Sindh**  
**Monthly Progress Of EMP Compliance (July, 2012)**

Priority- III Packages														
	RE - Sukkur					RE -Dadu		RE - Thatta						
Description	5205	5303	5304 A	5403	5404	5503	5504	5703 A	5703 B	5705	5707 A	5707 B	5709 A	5709 B
Camp Site	Status (Yes/No/NA)													
If copy of the Site specific EMP is provided at the camp site?	Yes	Yes	Yes	Yes	Yes	No	Yes	Yes	Yes	Yes	Yes	Yes	Yes	Yes
If the EMP instructions are understood?	Yes	Yes	Yes	Yes	Yes	No	Yes	Yes	Yes	Yes	Yes	Yes	Yes	Yes
If any individual is nominated for implementation of EMP?	Yes	Yes	Yes	Yes	Yes	No	No	Yes	Yes	Yes	Yes	Yes	Yes	Yes
If contractor followed the safety precautions as per ILO convention no.62?	Yes	Yes	Yes	Yes	Yes	No	Yes	Yes	Yes	Yes	Yes	Yes	Yes	Yes
If contractor provide PPE to workforce?	Yes	Yes	Yes	Yes	Yes	No	Yes	Yes	Yes	Yes	Yes	Yes	Yes	Yes
If PPE are used by workforce?	Yes	Yes	Yes	Yes	Yes	No	Yes	Yes	Yes	Yes	Yes	Yes	Yes	Yes
If potable water is available to labor?	Yes	Yes	Yes	Yes	Yes	No	Yes	Yes	Yes	Yes	Yes	Yes	Yes	Yes
If wood used as fuel?	No	No	No	No	No	No	No	No	No	No	No	No	No	No
If LPG cylinders are provided for cooking or heating purposes?	No	No	No	No	No	No	Yes	Yes	Yes	Yes	Yes	Yes	Yes	Yes
Any others issues	No	No	No	No	No	No	No	No	No	No	No	No	No	No
If First Aid Kit is provided at camp and individual nominated for addressing emergency?	Yes	Yes	Yes	Yes	Yes	No	Yes	Yes	Yes	Yes	Yes	Yes	Yes	Yes
If campsite is fenced to prevent trespassing?	Yes	Yes	Yes	Yes	Yes	No	No	N/A	N/A	N/A	N/A	N/A	N/A	N/A
If contractor maintain Environmental Monitoring Record and submit monthly monitoring reports?	Yes	Yes	Yes	Yes	Yes	No	Partially	N/A	N/A	N/A	N/A	N/A	N/A	N/A
If contractor maintain Grievances Log and registered the complaints from community?	Yes	Yes	Yes	Yes	Yes	No	No	Yes	Yes	Yes	Yes	Yes	Yes	Yes
If camp area have adequate natural drainage?	Yes	Yes	Yes	Yes	Yes	No	Yes	N/A	N/A	N/A	N/A	N/A	N/A	N/A

Priority- III Packages														
	RE - Sukkur					RE -Dadu		RE - Thatta						
Description	5205	5303	5304 A	5403	5404	5503	5504	5703 A	5703 B	5705	5707 A	5707 B	5709 A	5709 B
Camp Site	Status (Yes/No/NA)													
If arrangement for proper storage and disposal for solid waste is planned?	Yes	Yes	Yes	Yes	Yes	No	Yes	N/A	N/A	N/A	N/A	N/A	N/A	N/A
If Septic Tank and Soak Pits are designed for treatment of effluents?	Yes	Yes	Yes	Yes	Yes	No	Partially	N/A	N/A	N/A	N/A	N/A	N/A	N/A
If contract provide training to workers to effectively implement project specific EMP?	Yes	Yes	Yes	Yes	Yes	No	Yes	N/A	N/A	N/A	N/A	N/A	N/A	N/A
If contractor prohibit child labor or forced labor?	Yes	Yes	Yes	Yes	Yes	No	Yes	Yes	Yes	Yes	Yes	Yes	Yes	Yes
If contractor encourage hiring of local labor?	Yes	Yes	Yes	Yes	Yes	No	Yes	Yes	Yes	Yes	Yes	Yes	Yes	Yes
If contractor provide HSE plan and Emergency Response Procedures?	Yes	Yes	Yes	Yes	Yes	No	Yes	Yes	Yes	Yes	Yes	Yes	Yes	Yes
If contractor properly dispose off debris materials on approved barren land?	Yes	Yes	Yes	Yes	Yes	No	Yes	Yes	Yes	Yes	Yes	Yes	Yes	Yes
If there is any complaint regarding transmission of Communicable diseases (such as STI's and HIV/AIDS)	No	No	No	No	No	No	No	No	No	No	No	No	No	No
Topsoil Erosion due to Borrow Pits														
If natural areas with high elevation are available as borrow areas?	Yes	Yes	Yes	Yes	Yes	No	No	Yes	Yes	Yes	Yes	Yes	Yes	Yes
If borrow areas identified have suitable material and approved by design team?	Yes	Yes	Yes	Yes	Yes	No	Yes	N/A	N/A	N/A	N/A	N/A	N/A	N/A
If borrow pits are available in the ROW?	Yes	Yes	Yes	Yes	Yes	No	No	N/A	N/A	N/A	N/A	N/A	N/A	N/A
If there is any damage to the agriculture land due to borrow pits on agriculture land?	No	No	No	No	No	No	No	N/A	N/A	N/A	N/A	N/A	N/A	N/A
If top 15 cm are stripped and stockpiled for redressing?	Yes	Yes	Yes	Yes	Yes	No	Yes	N/A	N/A	N/A	N/A	N/A	N/A	N/A
If top 0.5 m is stripped of when deep ditching is carried out?	Yes	Yes	Yes	Yes	Yes	No	Yes	N/A	N/A	N/A	N/A	N/A	N/A	N/A
If ditch is filled with construction debris and leveled with stockpiled topsoil layer to maintain the landscape?	Yes	Yes	Yes	Yes	Yes	No	Not yet	N/A	N/A	N/A	N/A	N/A	N/A	N/A
If borrow area is leased whether the land owner is compensated as per lease agreement?	Yes	Yes	Yes	Yes	Yes	No	Yes	N/A	N/A	N/A	N/A	N/A	N/A	N/A

[illegible]

[illegible]

[illegible]

**Annex-III**

**Guidelines for Camp Site**

**Site Selection**

- Contractor will locate camp facilities preferably at a distance of 500 m or with the approval of PMU at a minimum distance of 100 m from existing settlements, built-up areas or wildlife habitats.
- The construction camp will be established in areas where vegetation cover removal and tree cutting can be avoided.
- The camp areas should have adequate natural drainage in order to facilitate the flow of treated effluents preferably within the works & Services land.
- The camp site should not be at blind spots, sharp turns to avoid any accidents due to movement of machinery from the camp area. Properly designed warning signs and speed humps should be provided at inlet and outlet of the camp site.
- If camp land is on lease, the land owners should be compensated as per lease agreements.

**Camp Site Management**

- Contractor shall provide copy of the Environmental Management and Monitoring Plan (EMMP) at the concerned sites. Copy of the EMMP should be available at camp site all the times.
- Contractor will nominate and authorize the Individual (s) with role and responsibility to implement EMMP measures.
- EMP recommendations should be clearly understood by the concerned implementing individual(s).
- Contractor shall comply with the safety precautions for constructions as per ILO convention 62.
- Contractor shall provide PPE to construction workforce and monitor if they are appropriately used.
- The labor should be provided with the adequate potable water at site.
- Wood shall not be used as fuel or for any other activity
- Contractor shall provide LPG cylinders for cooking and heating purposes.

- Contractor shall provide first aid kit at camp site and nominate/train individual (s) to address any emergency.
- Camp site will be fenced to prevent trespassing.
- Contractor shall maintain proper Environmental Monitoring Record ( Record of Noise, Air emissions) as advised in the EMMP and submit copy of the monitoring data in monthly progress reports
- Maintain good liaison with local communities.
- Contractor shall maintain Grievances Log, where all community complaints are registered and follow up actions should be recorded.

**Workers Training:**

- Contractor shall provide trainings to effectively implement project specific EMP. It may involve special trainings of workers on specific jobs.
- Training of construction workforce on Health & Safety and Use of PPEs (Safety Shoes, Helmets, Gloves, Masks)
- Construction workforce training in the storage and handling of material and chemicals that can potentially cause soil contamination and/or explosion.
- Contractor shall prohibit hiring of child labor and forced labor
- Contractor shall encourage hiring of Local labor

**Plans / Procedures:**

- Contractor shall prepare and submit Health and Safety Plan
- Contractor shall prepare and submit Emergency Response Procedures for
  - Spills & Leakages
  - Accident
  - Fire Fighting
  - Electric
- Contractor shall prepare and submit Workers Training Plan



**Waste Management:**

- Contractor will be responsible for treatment of wastewater from camp toilets. Wastewater will primarily pass through septic tank and later be discharge into soak pit.
- Solid waste generated during construction at campsite will be properly collected at source, treated and safely disposed of only in selected waste disposal sites.
- Debris generated by the dismantling of existing pavement structures will be recycled subject to the suitability of the material, or otherwise safely disposed of in approved barren land.
- Fuel and oil storage areas should be located away from any watercourses. They should be properly paved with containment ditch to control any spillage.
- Contractor will be responsible to contain, collect, cleanup and properly dispose-off the wastes in case of any emergency spill.
- Drinking water sources shall be at least 50 meter away from soak pit to avoid contamination.
- Contractor will be responsible to implement proper dust and noise abatement procedures at camp site.

## Environmental Management and Monitoring Plan (EMMP)

ENVIRONMENTAL MITIGATION AND MONITORING PLAN – PROJECT SITING					
Environmental Concern	Objectives	Recommended Mitigation Measures	Timing & Location to implement	Implementation Responsibility	Monitoring Responsibility
Encroachment on rural communities residential land and means of livelihood	To ensure that the project will not cause encroachment on residential land and means of livelihood	<ul style="list-style-type: none"> <li>Monitoring will be required for the assurance of no damage to the shops and houses of rural community which may lie inside ROW but on the existing earthen shoulder.</li> </ul>	During construction activity at project site.	Contractor/PMC	Internal: Contractor External: ES(PMC)
Encroachment on Precious Ecology	To ensure that the project will not cause Intrusion into Protected Areas, Loss of Forests and Intrusion into Wetlands and ensure the environmental health of the these areas adjacent to the road will not alter.	<ul style="list-style-type: none"> <li>Fuel and oil storage areas should be located well away from any watercourses.</li> <li>Refueling should wherever possible be carried out at the fuel storage area and not be permitted within or adjacent to watercourses.</li> <li>Asphalt should not be applied during rain so as to avoid it being washed into watercourses.</li> </ul>	During construction activity at project site.	Contractor/PMC	Internal: Contractor External: ES(PMC)
Encroachment on Historical/Cultural/Archeological Sites  (Mosques and Graveyards which may be located inside ROW of the project road but built on the earthen shoulder)	To reduce the impact of project siting on existing historical, cultural and archaeological sites	<ul style="list-style-type: none"> <li>As these mosques and graveyards are located outside the limit of carriageway. Hence reconstruction of earthen shoulder will only limited to the adjacent area of these sites.</li> <li>Monitoring will be required for the assurance of no damage to these cultural and archeological sites.</li> </ul>	During construction activity at project site.	Contractor/ PMU (W&SD)	Internal: Contractor External: ES(PMC)
Loss of Agricultural Land for Borrow Pits  (Borrow pits will need to be located along project road as a source of earth for sub-base material for the reconstruction.)	To reduce the impact of project siting on community owned assets.	<ul style="list-style-type: none"> <li>The Contractor will ensure that borrow material /earth-fill will be obtained within ROW.</li> </ul>	During construction activity at project site.	Contractor/ PMU (W&SD)	Internal: Contractor External: ES(PMC)

ENVIRONMENTAL MITIGATION AND MONITORING PLAN – DESIGN & PRE-CONSTRUCTION PHASE					
Environmental Concern	Objectives	Recommended Mitigation Measures	Timing & Location to Implement	Implementation Responsibility	Monitoring Responsibility
Topsoil Erosion & Borrow pits	To conserve Topsoil and have Borrow pit management.	<ul style="list-style-type: none"> <li>• Provide detail of location of sources of borrow material/earth-fill</li> <li>• Demarcate natural areas with high elevation</li> </ul>	During preconstruction stage at construction site.	Contractor/ PMC	<u>Internal:</u> Contractor/PMC <u>External:</u> ES(PMC)
Impact on Vegetation and Plantation	To minimize vegetation cover loss	<ul style="list-style-type: none"> <li>• Vegetation cover shall not be removed</li> <li>• Tree cutting shall be avoided</li> <li>• Trees located on the embankments will not be disturbed as they will not pose a traffic safety hazard</li> <li>• Trees located on the earthen shoulder will also not be disturbed but will be provided by safety barriers and signage to minimize traffic safety risks.</li> </ul>	Protective system for the traffic will be incorporated in project during design phase.  Implementation pre-construction activity at project site.	PMC/Contractor	<u>Internal:</u> Contractor <u>External:</u> ES(PMC)
Surface Water Drainage	To minimize waterlogging and surface water retention due to elevated road.	<ul style="list-style-type: none"> <li>• Include additional cross drainage</li> </ul>	During design phase.	DD(Design & QC)/Design consultant	PMU (W&SD)
Impacts on human settlements and wildlife habitats due to construction camp activities	To reduce impacts of construction camp activities	<ul style="list-style-type: none"> <li>• Locate camps at minimum distance of 100m from existing settlements, built-up areas and wildlife habitats</li> <li>• Establishment of camps in areas with adequate natural drainage channels.</li> <li>• Provision of treatment of effluents before discharge</li> <li>• Safe disposal of solid waste and effluent from construction camp</li> <li>• Wood shall not be used as fuel or for any other activity</li> </ul>	Before pre-construction at construction camp site	Contractor/PMC	<u>Internal:</u> Contractor <u>External:</u> ES(PMC)
Adverse impact on adjacent communities due to project activities	To protect adjacent communities	<ul style="list-style-type: none"> <li>• Project site will be fenced to prevent trespassing</li> <li>• Maintain good liaison with local communities</li> <li>• Display project activities</li> <li>• Use safety signage and written instructions for workers and communities</li> </ul>	Before pre-construction activity is initiated	Contractor/PMC	<u>Internal:</u> Contractor <u>External:</u> ES(PMC)

ENVIRONMENTAL MITIGATION AND MONITORING PLAN – CONSTRUCTION PHASE					
Environmental Concern	Objectives	Recommended Mitigation Measures	Timing & Location to implement	Implementation Responsibility	Monitoring Responsibility
Topsoil Erosion	Borrow pit management and Topsoil conservation	<ul style="list-style-type: none"> <li>Excavation of earth fill will be limited to an appropriate depth of 20cm</li> <li>In case use of agricultural land is unavoidable, the top 15cm of plough layer will be stripped and stockpiled for redressing after removal of borrow material</li> <li>In case deep ditching is carried out, the top ½ m layer of ditching area will be stripped and stockpiled</li> <li>Ditch to be filled initially with debris/scrap material from old construction and leveled with stockpiled topsoil later</li> <li>Landscaping of ditches and borrow pits that cannot be fully rehabilitated</li> <li>Land owners to be compensated as per lease agreements</li> </ul>	During construction at construction site and project road site	Contractor	Internal: Contractor/PMC External: ES(PMC)
Ground and water (Surface and ground) contamination	To avoid lubricants, solid waste, asphalt contamination to ground and water resources.	<ul style="list-style-type: none"> <li>Fuel and oil storage areas should be located well away from any watercourses</li> <li>Bitumen should be heated by kerosene or gas. Fuelwood should not be used as an alternative.</li> <li>Asphalt should not be applied during rain so as to avoid it being washed into watercourses.</li> </ul>	During construction at construction site and camp site	Contractor	Internal: Contractor External: ES(PMC)
Generation of Dust	To minimize the impacts created due to dust formation.	<ul style="list-style-type: none"> <li>Dust abatement program needs to be implemented that includes spraying water on the road and work area within a village and past houses that may be located close to the road.</li> <li>Bulk cement delivery rather than bags</li> <li>Sealing of urban areas should be given priority.</li> <li>Maintain dust abatement procedures</li> </ul>	During construction at construction site and camp site	Contractor	Internal: Contractor External: ES(PMC)
Impacts on human settlements and wildlife habitats due to construction camp activities	<ul style="list-style-type: none"> <li>To reduce impacts of construction camp activities on land</li> <li>To provide adequate management of camp site through training of workers and compliance with international safety practices.</li> <li>Minimization of safety &amp; health hazards</li> </ul>	<ul style="list-style-type: none"> <li>Small Worker Health and Safety Plans should be prepared</li> <li>Toilet waste to be collected in septic tank and discharged into soak pit.</li> <li>Training of construction workforce in handling and storage of materials and chemicals to avoid soil contamination/ explosion</li> <li>Treatment of solid waste generated to be carried out</li> <li>Solid waste to be disposed of in demarcated waste disposal sites</li> <li>Debris to be recycled according to suitability or disposed of in approved barren land</li> <li>Comply with safety precautions for constructions as per ILO convention#62</li> <li>Training of workers on construction safety</li> <li>Provision of PPE – hard boots, helmets, gloves, masks</li> <li>Monitor the use of PPE</li> <li>Prohibit child labour and forced labour</li> <li>LPG cylinders to be used for cooking and heating</li> </ul>	During construction at construction camp site	Contractor/PMC	Internal: Contractor/PMC External: ES(PMC)

## Annex-IV

Impact on Land and property due to improper site drainage	To minimize impacts on land and provide efficient drainage system at project area.	<ul style="list-style-type: none"> <li>• Drainage outlets to be discharged into natural streambeds or open areas</li> <li>• Damage to private property shall be avoided in all cases</li> <li>• Retention work to be carried out in and around project site</li> </ul>	During construction at construction site	Contractor	<u>Internal:</u> Contractor/PMC <u>External:</u> ES(PMC)
Damage to Cultural and Community Owned Assets	To minimize impact that arise during construction activities on local water resources, any discover site of historical/ archeological importance	<ul style="list-style-type: none"> <li>• Control over wastage of water during construction operations and at campsites</li> <li>• Develop and maintain liaison with local communities related to utilization of local resources for project purpose</li> </ul>	During construction at construction site	Contractor	<u>Internal:</u> Contractor/PMC <u>External:</u> ES(PMC)
Noise and Vibration	<ul style="list-style-type: none"> <li>• To reduced construction noise and vibration as far as practicable through the implementation of appropriate management procedures, including use of low noise equipment and management of construction hours.</li> <li>• To secure brick and concrete structure due to vibration impact adjacent to carriageway.</li> </ul>	<ul style="list-style-type: none"> <li>• Construction activities situated close to densely populated areas to be limited to daylight hours to minimize impact of noise.</li> <li>• Earthmoving equipment should be kept in good condition by proper maintenance and servicing</li> <li>• Vibratory rollers should not be used for compaction around these mosques.</li> </ul>	During construction at construction site	Contractor	<u>Internal:</u> Contractor/PMC <u>External:</u> ES(PMC)
Adverse safety impacts on pre-existing road Traffic due to construction	To reduce safety hazards for traffic movement	<ul style="list-style-type: none"> <li>• Proper warning signs and flagging will need to be displayed at the commencement of any road construction or diversion so as to forewarn drivers of changed road conditions.</li> <li>• Construction machinery is to be placed within the designated areas of movement</li> <li>• Construction work shall not hinder local people's access to nearby facilities</li> </ul>	During construction at construction site	Contractor	<u>Internal:</u> Contractor/PMC <u>External:</u> ES(PMC)
Damage to Services  (Services within the ROW include electrical and telephone cables and are located on the earthen shoulder and embankments of the road)	To avoid disturbance to the local community due to temporary shortage of Services	<ul style="list-style-type: none"> <li>• The responsibility for any repair of damaged/ disrupted services will lie with the Contractor. This will assist in ensuring that damage to these services and inconvenience to the community is avoided to the extent possible.</li> </ul>	During construction at construction site	Contractor	<u>Internal:</u> Contractor/PMC <u>External:</u> ES(PMC)
Transportation of Construction materials	To avoid damage to existing roads and bridges.	<ul style="list-style-type: none"> <li>• Trucks do not exceed the bridge and pavement specifications</li> <li>• Checked by weight bridges.</li> </ul>	During construction at camp site or any located weight bridge in the project area.	Contractor	<u>Internal:</u> Contractor/PMC <u>External:</u> ES(PMC)

ENVIRONMENTAL MITIGATION AND MONITORING PLAN – MAINTENANCE AND OPERATION PHASE					
Environmental Concern	Objectives	Recommended Mitigation Measures	Timing & Location to implement	Implementation Responsibility	Monitoring Responsibility
Community Safety Risks due to both Accidental and Natural causes	To minimize community safety risks as the project will be accessible to members of the affected community	<ul style="list-style-type: none"> <li>• Emergency and safety plan will be built by contractor/PMU for bridges and road near canals and waterways.</li> <li>• Properly designed speed humps, speed signs and, possibly traffic signals within settlements. A proper road safety program needs to be developed.</li> <li>• Grievance Redressal Mechanism will be implemented by Contractor to ensure that community complains are recorded appropriately.</li> </ul>	Continuous during Operation Phase	Contractor/PMC/PMU (W&SD)	PMU (W&SD)/PMC

**ENVIRONMENT PROFILE**



**Fig:1 Oil storage at campsite**



**Fig:2 Laboratory setup at campsite**



**Fig:3 Water sprinkling during road construction work**



**Fig:4 Posting of diversion sign by contractor**



**Fig:5 Safety tape provision during bridge construction**



**Fig:6 Road alignment marked with lime & flags.**





**Fig:7 Large hole in main carriageway**



**Fig:8 Embankments along standing water**



**Fig:9 Culvert construction in process no PPE**



**Fig:10 Contractor instructed to secure local drinking water resources**



**Fig:11 Half of carriageway erupted due to flood**



**Fig:12 Scheme board posted at start of project**



## PUBLIC CONSULTATION



**Fig:13 Public interaction related to project activities**



**Fig:14 Discussion related to environmental provisions with contractor**



**Fig:15 Interaction with local inhabitants regarding environmental perspectives of project executed in their vicinities**



**Fig:16 Public meeting regarding environment management of the project**