

Environmental Monitoring Report

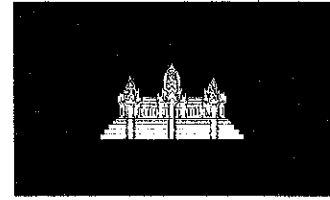
Quarterly Report No. 12
April-June 2015

Cambodia: Flood Damage Emergency Reconstruction Project—Additional Financing

Prepared by Consultant of Project Coordination and Monitoring Unit for the Ministry of Economy and Finance and the Asian Development Bank.

This environmental monitoring report is a document of the borrower. The views expressed herein do not necessarily represent those of ADB's Board of Directors, Management, or staff, and may be preliminary in nature.

In preparing any country program or strategy, financing any project, or by making any designation of or reference to a particular territory or geographic area in this document, the Asian Development Bank does not intend to make any judgments as to the legal or other status of any territory or area.



**Royal Government of
Cambodia**

**Ministry of Public Works
and Transport**

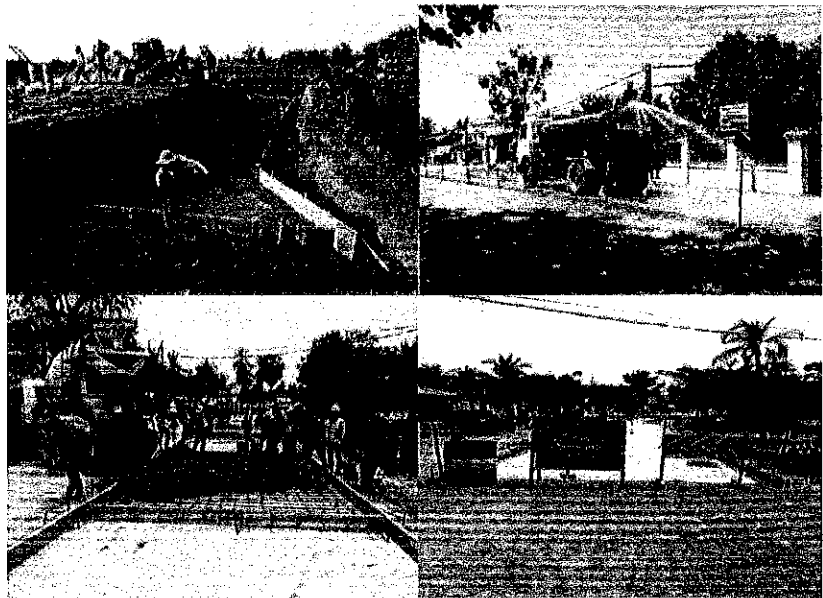
GRANT No. 0285-CAM (EF) and ADB LOAN No. 2852-CAM (SF)

**FLOOD DAMAGE EMERGENCY RECONSTRUCTION PROJECT (FDERP) AND
FDERP – AF (ADDITIONAL FINANCING)**

Construction Supervision

Safeguards Monitoring Report No.12

April-May-June 2015



In Joint Venture with

 **egis International**



VIDOENGINEERING (CAMBODIA)

Project Name: Flood Damage Emergency Reconstruction

Project Grant No.0285-CAM (SF) and

ADB Loan No. 2852-CAM (SF)

Construction Supervision

Report Name: Safeguards Monitoring Report No.12: April - May - June 2015

PREPARATION, REVIEW AND AUTHORISATION

Prepared by: Andrelita J. Sto. Domingo

Position: Environmental Specialist

Signature: *Andrelita J. Sto. Domingo*

Date: 15/8/15

Reviewed by: Carl E. Berentsen

Position: Project Manager (CSC)

Signature: *Carl E. Berentsen*

Date: 15/8/2015

Reviewed by: Nay Chamnang

Position: Project Manager, PIU

Signature: *Nay Chamnang*

Date: 28/9/2015

Approved by: Kem Borey

Position: Project Director, PIU

Signature: *Kem Borey*

Date: 28/09/2015

ISSUE REGISTER DISTRIBUTION LIST

Ministry of Public Works and Transport

Asian Development Bank, Manila

AusAID, Phnom Penh

Date Issued	No. of Copies
	2
	1
	1

REVISION, PREPARATION, REVIEW ISSUE				
Revision	Date	Prepared by	Reviewed by	Issued to Distribution List by:

Grant No.:0285-CAM (EF) and Loan No.: 2852-CAM (SF)
Safeguards Monitoring Report No. 12 (FDERP & FDERP-AF)

ASIAN DEVELOPMENT BANK
RECEIVED
 30 SEP 2015
 CAMBODIA RESIDENT MISSION

Document quality information

General information

Author(s)	Andrelita J. Sto.Domingo / Carl E. Berentsen
Project name	FLOOD DAMAGE EMERGENCY RECONSTRUCTION PROJECT
Document name	Safeguards Monitoring Report No. 12
Date	June 2015
Reference	

Addressee(s)

Sent to:

Name	Organization	Sent on (date):
H.E. Kem Borey	Ministry of Public Works and Transport	
Mr. Nay Chamnang	Ministry of Public Works and Transport	
Copy to:		
Name	Organization	Sent on (date):
Mr. Nicolas Morice	Egis International	

History of modifications

Version	Date	Written by	Approved & signed by:

Table of Contents

Table of Contents.....	3
Abbreviations	4
Summary.....	5
Chapter 1 - General Background	7
1.1 Project Background and Objective	7
1.1.1 FDERP	7
1.1.2 FDERP-AF	8
1.2 Project Progress and status	9
1.2.1 FDERP Projects	9
1.2.2 FDERP-AF Projects	12
1.3 Purpose of the report.....	15
Chapter 2—EMP Implementation and Monitoring.....	19
2.1 EMP Implementation and Monitoring Arrangement	19
2.2 Scope of Environmental Monitoring.....	19
2.3 Methodology.....	19
Chapter 3 – Environmental Reports and Results of Monitoring	20
3.1 Environmental Reports Prepared by the CSC	20
3.1.1 Environmental Categorization	20
3.1.2 IEE and EMP	20
3.1.3 Safeguards Monitoring and Reporting.....	20
3.2 Environmental Report of the Contractor	20
3.3 Field Monitoring by CSC/Environmental Specialists	21
Chapter 4—Conclusion and Recommendations	23
4.1 Conclusion	23
4.2 Recommendations	23
Chapter 5—Annexes	24
Annex 1: Status of EMP Compliance	24
A. Pre-Construction and construction phases.....	24
Annex 2: Monitoring Checklist (FDERP).....	29
A. CW6b Replacement of 3 Structures on PR 270 (Kampong Cham)	29
B. CW7 Emergency Reconstruction of 8.1km DBST on PR 270 (Kg. Cham)	30
C. CW8 Emergency Reconstruction of 34.6km DBST of PR 159	31
Annex 3: Monitoring Checklist (FDERP-AF)	32
A. CW9b Emergency Reconstruction of Prek Chiek Bridge on PR 270	32
B. CW10a Emergency Reconstruction of 8.0km of PR 156D (B. Meanchey)	33
C. CW11/12 Emergency Reconstruction of 8.15km of PR 264E and PR 7.37km of PR 264D (Kg. Thom).....	34
D. CW13 Emergency Reconstruction of 18.75 km of PR 1570 Battambang.....	35
E. CW15 Emergency Reconstruction of 6km Concrete Pavement of NR63.....	36
F. CW16 Emergency Reconstruction of 11.20 km of DBST Road on PR265F (Siem Reap)	37
Annex 4: Photos	38

Abbreviations

Abbreviations

ADB	Asian Development Bank
AF	Additional Financing
AP	Affected Persons (those directly affected by the project activities)
COI	Corridor of Impact (a width over the road centerline agreed to as being the width within which resettlement-related impacts would be measured)
CSC	Construction Supervision Consultant
DDIC	Detailed Design and Implementation Consultant
EA	Executing Agency
EIA	Environmental Impact Assessment
EMoP	Environmental Monitoring Plan
EMP	Environmental Management Plan
FDERP-AF	Flood Damage Emergency Reconstruction Project – Additional Financing
IA	Implementation Agency
IEE	Initial Environmental Examination
IOL	Inventory of Losses (part of RP work)
MRD	Ministry of Rural Development
MOE	Ministry of Environment
MPWT	Ministry of Public Works and Transport
NR	National Road
PIU	Project Implementation Unit
PMU	Project Management Unit
PPE	Personal Protective Equipment
PR	Provincial Road
RCG	Royal Cambodian Government
ROW	Right-of-Way for road as defined by law
RP	Resettlement Plan
SEU	Social and Environment Unit –within MPWT-Phnom Penh
TL	Team Leader
UXO	Unexploded Ordnance

Summary

This Safeguards Monitoring Report provides a periodic update on the implementation of environmental management plan and gender considerations for the on-going subprojects under Stage 3 of FDERP and Stages 2 and 3 of FDERP-AF:

I. FDERP Projects:

(i) CW7: Emergency Reconstruction of 8.1km of PR270 was awarded in December 2013 and the contract to end in October 2014. This was extended up to January 6, 2015 with the Completion Certificate issued on the same month. The project is under defect liability period.

(ii) CW6b: Replacement of 3 Structures on PR270 was awarded in April 2013 for completion in 10 month-period. The project was later extended to 15 October 2014, and again extended to 15 June 2015 due to slope protection work. All three bridges were opened for traffic in September 2014.

Due to erosion of the river banks at bridge CW6b-1 and approach slope as damaged after 2014 rainy season, additional survey and investigations were conducted. As decided, a 60-m soil erosion protection structure is necessary as approved through ADB's NOL on 15 May 2015 and contract agreement was signed on 20 May 2015. Subsequently, a Completion Certificate was issued on 15 June 2015.

(iii) CW8: Emergency Reconstruction of PR159. The only ICB contract under FDERP was awarded on 30 September 2013 for 20-month period. Original Contract Amount was \$ 8,7965,645.58 which was increased to \$9,852,155.89 due to additional slope protection works, side drains and various design changes to the bridge. Contract Amendment No.1 was approved through ADB's NOL received on 1 December 2014 followed by Contract signing on 4 December 2014

II. FDERP- AF Projects:

i) CW9b – CW9b is the Emergency Reconstruction of Prek Chiek Bridge of PR 270 in Kampong Cham province (\$938,000 with 300 days construction period). Seaboard Co., Ltd is the contractor. A Completion certificate was issued on 15 June 2015.

ii) CW11/12 – the Emergency Reconstruction of 8.15 km DBST of PR No. 264E and 7.375 Km DBST of PR No.264D in Kampong Thom Province (\$2,799,980.19 with 420 days construction period)

iii) CW11/12 is the Emergency Reconstruction of 8.15 km DBST road of PR 264E and 7.375 km DBST road of PR 264D at Kampong Thom Province (\$2,799,980.19 with 420 days construction period). Seaboard Co., Ltd. is the contractor. Notable progress had been made and it is expected that the contract can be completed ahead of schedule. Reconstruction of PR 265E paved with laterite and the first layer of bituminous surface treatment on PR 256D has been completed. Road marking and block sodding are in progress and are expected to be completed in end of July. The Consultant is taking actions following comment from ADB Mission Team on safeguarding issues during site visit in March 2015. Contract variation orders are in progress to cover extra works.

iv) CW10a – CW10a is the Emergency Reconstruction of 8.0 km DBST road of PR 156D in Banteay Meanchey Province (\$2,126,833.70 with 365 days construction period). Ung Simsia Construction Co., Ltd. is the contractor. The progress is estimated to 64% versus a target of 90%.

v) CW13 – the Emergency Reconstruction of 18.75 km Laterite Road of PR 1570 in Battambang Province (US\$1.792 million with 420 days) and

- vi) CW15 – the Emergency Reconstruction of 6.0 km Concrete Pavement of NR 63 in Siem Reap Province (US\$2.334 million with 365 days construction period).
- vii) CW16 - the Emergency Reconstruction of 11.20 km of Double Bituminous Surface Treatment (DBST) Road on Provincial Road 265F in Siem Reap Province (contract amount: \$2,233,310.02).
- viii) CW9a - Emergency Reconstruction of 16.19 km (PK.6+636 – PK.22+826) DBST Road on NR No. 70 in Kampong Cham Province (Contract amount: \$2,749,789.91).
- ix) CW10b - Emergency Reconstruction of 10.06km (PK14+400- PK 24+460) DBST Road and 75m Concrete Bridge on PR No. 156D in Banteay Meanchey Province .
- X) CW10c: Emergency Reconstruction of 10.06 km (PK14+400 – PK24+460) DBST Road and 75m Concrete Bridge on PR No. 156D in Banteay Meanchey Province .

Based on field observations, the mitigation measures being implemented by the contractors are as follows: use of approved borrow pit areas, installation of soil erosion/slope protection structures like stone masonry, gabion mattress, geotextile, investigation of the presence of UXOs and its safe removal, regular sprinkling of water on access roads, disposal of unsuitable excavated materials and other residual construction wastes to designated dumpsites, provision of PPE to workers and facilities such as kitchen, access to communication, toilet, bathroom, potable water, installation of warning/safety signs and employment of unskilled workers including women.

The project as a whole has no significant negative environmental and social impacts. The implementation of the above mitigation measures reduces the occurrence of the following negative impacts: Loss of trees (during site clearing and quarrying of construction materials), damage to existing structures, risk of land mine or UXO, dust generation control, noise and vibration disturbance, water contamination, water-borne disease control, loss of agricultural land for borrow pits, soil erosion protection, generation of wastes, safety and health, traffic congestion, transmission of sexually transmitted disease (HIV), while the generation of employment is enhanced.

The contractors were able to minimize the impacts to acceptable levels during pre-construction and construction period, particularly the removal of UXO during the pre-construction phase. Required procedures were properly implemented with the details shown in the Annexes of this report.

To conclude, the contractors should continue the implementation of the Environmental Management Plan (EMP) until the completion of their contract works as specified in the contract; perform self-monitoring works including the implementation of the Labor and Gender Action Plan. Monthly Reports with proper documentation should be submitted to MPWT and the CSC.

Chapter 1 - General Background

1.1 Project Background and Objective

1.1.1 FDERP

1. The "Flood Damage Emergency Reconstruction Project" (FDERP) is an emergency infrastructure restoration project in Cambodia which consists of several reconstruction projects or categorized as subprojects implemented in the following five provinces: Prey Veng, Kampong Cham, Siem Reap, Banteay Meanchey and Battambang. Location of these subprojects are shown in **Figure 1**.

2. FDERP was introduced after a reconnaissance mission by ADB to Cambodia in December 2011. This Mission was conducted as a result of destruction in 18 out of 24 country's Provinces, caused by severe typhoons in September and October 2011.

3. The project aims to restore key infrastructures damaged by flood. Restoration works are classified as follows: (i) National and provincial road restoration; (ii) Rural roads restoration; (iii) Irrigation and flood control; and (iv) Project and flood management in the above flood-affected Provinces.

4. FDERP's implementation is expected to result to economic and social recovery from the damages caused by the 2011 flood in the relevant Provinces. The ultimate outcome of the project is to restore critical public and social infrastructure assets to their original state or better.

5. The emergency reconstruction project will be implemented over a 3.5 year period funded by ADB and Australia Aid through an Emergency Assistance Loan (EAL). Approval of the Project was on 27 March 2012 which became effective on 14 May 2012. Contract for the design and supervision consultant was signed on June 21, 2012. Closing date for the loan is 30 September 2015 while the grant component has been closed on 31 March 2015.

6. Total Project Cost is US\$67.18 million equivalent. The amount of SDR 35,347,000 (equivalent to US\$ 55million at the time of loan negotiation) is provided by the Asian Development Fund (ADF). The Government of Australia provides a grant of A\$ 5.0 million (\$5.25 million equivalent), while the Government of Cambodia contributes \$6.93 million equivalent in safeguards costs, in-kind expenditures by providing staff and office facilities plus covering the costs of taxes and duties.

7. The FDERP project includes three components which are managed by three Implementation Agencies (IA): i) Ministry of Public Works and Transport (MPWT), ii) Ministry of Rural Development (MRD) and iii) Ministry of Water Resources and Meteorology (MOWARM). All IAs report to the Ministry of Economy and Finance (MEF) which is the Program's overall official Executing Agency (EA). The MEF is coordinating and managing the Emergency Program through the Project Coordination and Monitoring Unit (PCMU).

1.1.2 FDERP-AF

8. As a result of severe storms and floods during the months of September and October 2013, MPWT submitted various proposals for rectification works of ongoing projects and also an expansion of emergency flood protection efforts to Provinces in the North which had suffered from extensive damages; areas which were not included in the 2011/2012 FDERP.

9. While some areas in Thailand were also inundated, the floodwater drained down to Cambodia, especially in the north-western provinces of Banteay Meanchey, Battambang, Pailin and Siem Reap. Subsiding of water was quite slow than expected. A total of 20 provinces have been affected and based on record of 15 November 2013, over 1.7 million people have been affected, which is about 12% of the country's population. The extent of damage caused by the 2013 flooding was more severe compared to that of 2011, in terms of loss of life and impacts on infrastructure and agricultural crops. This is attributed largely to prolonged duration of inundation hampering immediate rescue operations. An initial damage cost estimate, approaching \$1 billion along with 188 deaths was released by the NCDM, and as of 8 November. According to NCDM, approximately 45,905 households (about 211,163 people) had to be evacuated from their homes, although many have since been able to return. More than 240,195 houses, 1,254 schools, 92 health centers and hospitals, and 533 pagodas have been affected, with sizeable infrastructure damage incurred, including 440 km of national roads and 3,569 km of rural roads. Over 118,357 ha of transplanted rice, and 57,443 ha of other crops have also been damaged, about 7% of total cultivated areas.

10. These events and disasters were highlighted and discussed at the ADB Mid Term Mission. As a result it was agreed to conduct a joint reconnaissance mission to the Northern Provinces to investigate damages and assess a potential extension to the existing emergency program by incorporating new projects, primarily funded by ADB, and within the same format as the existing program. The location of the project is shown in **Figure 1**.

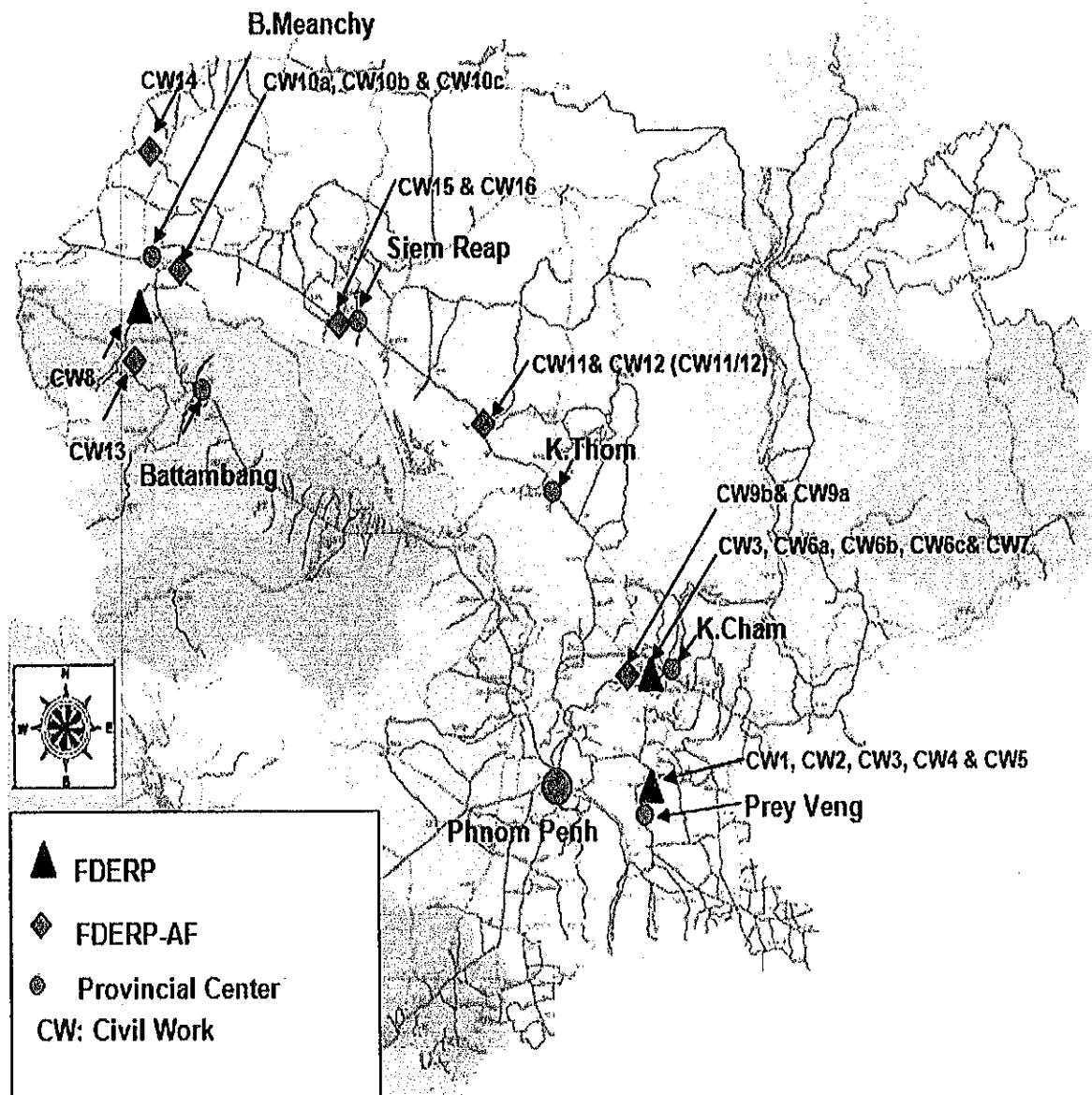


Figure 1: Overall Map for FDERP and FDERP-AF

1.2 Project Progress and Status

1.2.1 FDERF Projects

11. The progress and status of 3 Civil Works (CW) sub-projects from April - May - June 2015 are shown below:

12. There are 7 subprojects under Stage 3 including CW4, CW5, CW6a, CW6b, CW6c,

CW8 and CW7. Defect Liability Certificates were issued for four subprojects: CW4 and CW5 in Q4/2014 and CW6a and CW6c in Q2/2015. CW7 was completed and Completion Certificate was issued on 6 January 2015. Completion certificate was issued for CW6b on 15 June 2015 while CW8 has been extended until 31 July 2015 for the additional side drain works around PK11+000. Summary of subprojects under Defect Liability Period or under construction are highlighted below:

(i) CW7: Emergency Reconstruction of 8.1km of PR270 was awarded in December 2013 and due for completion in October 2014. This contract was extended up to January 6, 2015 and during the same month, the Completion Certificate was issued. The project is under the defect liability period.

(ii) CW6b: Replacement of 3 Structures of PR270 was awarded in April 2013 to be completed for 10-month period. The project was later extended up to 15 October 2014. With the additional slope protection works, the completion date was moved to 15 June 2015.

Overall Contract Amount was US \$2,927,997.55 Million including the additional slope protection works. River banks at bridge CW6b-1 and approach slope which were damaged during the rainy season in 2014 were again surveyed and investigated by the contractor and the consultant in which a separate geotechnical report was also prepared. Based on investigation conducted, it was decided that 60m erosion control structure has to be provided. A contract amendment including this variation was proposed in the amount of US\$3,209,323.61 and an extra cost of US\$281,326.06. This contract amendment was approved by ADB's NOL on 15 May 2015 and contract agreement was signed on 20 May 2015.

Completion Certificate was issued on 15 June 2015. Final payment (IPC#13) in the amount of US\$153,658.63 was certified on 22 June 2015. Request for retention (10%) with replacement of half this amount by Bank Guarantee was certified on 23 June 2015.

(iii) CW8: Emergency Reconstruction of PR159. The only ICB contract under FDERP was awarded on 30 September 2013 for 20-month construction period with Original Contract Amount of US\$ 8,7965,645.58. Variation package amount of US\$9,852,155.89 (added cost of US\$1,056,510.31) was due to unforeseen soil condition in the area requiring a slope protection works with side drains. Change in the design of bridge was requested by the Client as covered by Contract Amendment No.1 with NOL received from ADB on 01 December 2014 and contract was signed on 4 December 2014.

13. The status of implementation of Stage 3 under FDERP is shown in **Table 1**.

Table 1: The progress and status of implementation of Stage 3 under FDERP

CW 6a		PR270 - Kampong Cham	Reconstruction of 8.5 km DBST road	1,268,752.17	Contract awarded on 6 December 2012 Start Date: 6-Dec-12 Completion date: 12-April-14 End of defect liability: 12-April-15 Final Cost: \$1,072,143.43 Savings: \$196,608.74	Defect Liability Certificate issued in Q2/2015
CW6b	Seaboard	PR270- Kampong Cham	Reconstruction of 1) CW6b-1: Svay Taken Bridge, 9m x 51m 2) CW6b-2: Phum Thmey Bridge, 9m x 80m 3) CW6b-3: Rokar Koy Bridge 9 x 20m	2,927,997.55	(Original) 3,209,323.61 (Amended) Contract awarded on 08-Jan-13 Start Date: 29-Apr-13 Completion date: 15-June-15 End of defect liability: 15-June-16 Final Cost: \$3,143,713.55 Savings: \$ 65,610.06	Completion Certificate was issued on 15 June 2015 (under defect liability period)
CW 6c		PR270 - Kampong Cham	Replace 4 Culverts and 3 RC Bridges along PR270	1,522,735.70	Contract Signed on 11-Apr-12 Start Date: 11-Apr-13 Completion date: 15-May-14 End of defect liability: 15-May-15 Final Cost: \$1,402,110.50 Savings: \$120,625.20	Defect Liability Certificate issued in Q2/2015
CW 8	Ung Simsia / Seaboard	PR159 - Battambang/ Banteay Meanchey	Reconstruction DBST 34.6km (bridge 36m, box culverts: 15, pipe culverts 41)	8,795,645.58 (Original) 9,852,155.89 (Amended)	Contract Signed on 30 Sept 2013 Intended completion: 16-Jun-15	

						-Time extension to 31 July 2015 As of 25 June 2015 -Work progress: planned: 100%, actual: 97.38% -Embankment: 100% -Subgrade: 100% -Subbase: 100% -Base course: 100% -Prime coat: 100% -Seal Aggregates 100% -Structures: 100%,- Road Furniture in progress - Side drains at PK11+000 is proposed on site during ADB Mission	
CW 7	Tang Kim Eng	PR270 - Kampong Cham	Reconstruction of DBST 8.1 Km	1,431,562.20		Contract Signed on 20-Dec-13 Start Date: 23-Dec-13 Completion date: 6-Jan-15 End of defect liability: 6-Jan-15 Final Cost: \$1,215,598.92 Savings: \$215,963.28 Under defect liability period	

1.2.2 FDERP-AF Projects

A. Stage 2 Civil Works

14. The overall progress for Stage 2 is estimated at 80% against a target of 94%. The difference is due to delay of CW10a.

15. CW9b is the Emergency Reconstruction of Prek Chiek Bridge of PR 270 in Kampong Cham province (\$938,000 with 300 days construction period). Seaboard Co., Ltd is the contractor. A Completion certificate was issued on 15 June 2015.

16. CW11/12 is the Emergency Reconstruction of 8.15 km DBST road of PR 264E and 7.375 km DBST road of PR 264D at Kampong Thom Province (\$2,799,980.19 with 420 days construction period). Seaboard Co., Ltd. is the contractor. Notable progress had been made and it is expected that the contract can be completed ahead of schedule. Reconstruction of PR 265E paved with laterite and the first layer of bituminous surface treatment on PR 256D has been completed. Road marking and block sodding are in progress and are expected to be completed in end of July. The Consultant is taking actions following comment from ADB Mission Team on safeguarding issues during site visit in March 2015. Contract variation orders are in progress to cover extra works.

17. CW10a is the Emergency Reconstruction of 8.0 km DBST road of PR 156D in Banteay Meanchey Province (\$2,126,833.70 with 365 days construction period). Ung Simsia Construction Co., Ltd. is the contractor. The progress is estimated to 64% versus a target of 90%.

18. The progress and status of implementation of Stage 2 under FDERP-AF is shown in **Table 2** below:

Table 2: The progress and status of implementation of Stage 2 under FDERP-AF

CW	Contractor	Provincial Road	Work Description	Contract Amount	Project Status	Civil Works Implementation Completed
CW9b	Seaboard	Kg. Cham PR270	Reconstruction of Prek Chiek Bridge, 9m x 40m, PSC deck unit	0.938 Mill	-Contract awarded: 10-Jul-14 -Start Date: 10-Jul-14 -Contract Period: 300 days -Completion Date: 15-Jun-15 -End of defect liability: 15-June-16 Final Cost: \$706,595.93 Savings: \$ 231,404.07 Completion Certificate was issued on 15 June 2015 (Under Defect Liability Period)	
CW10a	Ung Simsia	Banteay Mean chey PR156D	Reconstruction of 8.0km DBST of PR156D	2.126 Mill	-Contract awarded: 10-Jul-14 -Start date: 10-Jul-14 -Contract Period: 365 days -Intended Completion date: 10-Jul-15 -Time extension: 30 Sept 2015 -Work progress: Planned: 90.19% vs. Actual: 64.11% - Contract Amendment No.1 is being prepared. -Time extension is given to 31 July 2015.	-Embankment 100% -Subgrade 100% -Subbase 100% -Base course 100% -prime coat in progress -Issue: deep cracks under repair, need extra budget
CW11/12	Seaboard	Kg. Thom PR265E and PR265D	Reconstruction Laterite road 8.15km of PR265E 7.375 km DBST of PR256D	2.799 Mill	-Contract awarded: 10-Jul-14 -Start Date: 10-Jul-14 -Contract Period: 420 days -Intended Completion date: 3-Sep-15 -Work progress: mostly completed. -Contract Amendment No.1 is being prepared.	-Subbase 100% -Base- Course 100% - Prime coat: 100% - 19mm aggregates: 100% - 12 mm aggregates: 100% - Bloc sodding, road marking in progress

B. Stage 3 Civil Works

19. The progress and status of 3 Civil Works (CW) sub-projects from April -May - June 2015 are shown below:

20. CW13 – the Emergency Reconstruction of 18.75 km Laterite Road on PR 1570 in Battambang province (\$1.792 million with 420 days construction period). Hen Sambath is the contractor. Notable progress has been achieved more than recently awarded subproject. The progress is ahead of schedule, estimated at 69% vs a target of 43%.

21. CW15 – the Emergency Reconstruction of 6.0 km Concrete Pavement on NR 63 in Siem Reap province (\$2.334 million with 365 days construction period). Visvakam is the contractor. This subproject had experienced slight delays at the start-up and slow progress. The progress is behind schedule, estimated at 20% vs a target of 38%.

22. CW16 - the Emergency Reconstruction of 11.20 km of Double Bituminous Surface Treatment (DBST) Road on Provincial Road 265F in Siem Reap Province (contract amount: \$2,233,310.02). CW16 experienced slight delays at the start-up due to slow mobilization of contractor, lack of manpower and equipment.

23. CW9a - Emergency Reconstruction of 16.19 km (PK.6+636 – PK.22+826) DBST Road on NR No. 70 in Kampong Cham Province (Contract amount: \$2,749,789.91). This subproject was just awarded with conditional NOL from ADB on personnel and equipment.

24. CW10b - Emergency Reconstruction of 10.06km (PK14+400- PK 24+460) DBST Road and 75m Concrete Bridge on PR No. 156D in Banteay Meanchey Province (Contract amount:\$2,334,526.33). This subproject was just awarded with conditional NOL from ADB on personnel.

25. CW10c: Emergency Reconstruction of 10.06 km (PK14+400 – PK24+460) DBST Road and 75m Concrete Bridge on PR No. 156D in Banteay Meanchey Province (Contract amount: \$3,045,589.37). This subproject was just awarded with conditional NOL from ADB on personnel.

12. The progress and status of implementation of Stage 3 under FDERP-AF is shown in **Table 3** below:

Table 3: The progress and status of implementation of Stage 3 under FDERP-AF

No.	Contractor	Province (Road)	Work Description	Contract Amount(\$)	Project Status	Civil Works Implementation completed
CW13	Heng Sambath	Battambang (PR1570)	Reconstruction of 18.75km Laterite Road on PR1570	1.792Mill	-Contract awarded: 20-Jan-2015 -Work starts: 20-Jan-2015 -Contract Period: 420 days -Intended Completion date: 15-Mar-2016 -Advance: \$268,528.5-\$44,616.8 Physical Progress: Planned: 43.25% vs. Actual:69.75% Contract Amendment No.1 is being prepared.	-UXO clearance 100% -Pipe culverts casted 100% -Clearing & Grubbing:100% -Embankment 100% -Sub-base 1 st layer: 100% spreading, 100% compacted
CW15	Visvakam	Siem Reap (NR63)	Reconstruction of 6.0km Concrete Pavement on NR 63	2.334Mill	-Contract awarded: 30-Dec-14 -Work starts: 30-Dec-14 -Contract Period: 365 days -Intended Completion date: 30-Dec-15 -Advance: \$350,178.95, received: 9/2; Certified: 11/2 (Physical)Planned:38.60% vs. Actual: 20.71%	-UXO clearance 100% -Resurvey 100% -Clearing & Grubbing 100% -Embankment: 18% -Reconstructed Sub-base: 27% -Base-Course work: 34% -Concrete Class "D1", 25 MPa for Concrete Pavement: 15.6%
CW16	Banteay Srei	Siem Reap (PR265F)	Reconstruction of DBST road 11.2km	\$ 2.233 Mill	-Work starts: 27-Feb-2015 -Contract Period: 420 days -Intended Completion date: 22-Apr-16 -Advance: \$ 334,996.5 received on 5/3 and certified on 5/3. -No IPC	-UXO clearance 100% -Embankment 39%
CW9a	Banteay Srei	K.Cham (NR70)	Reconstruction of 16.19Km DBST Road	\$2,749,789.91	-Advance: \$412,468.49 (approved) -Time wise: Letter to commence:24/6 -No IPC	-UXO clearance in progress -Re-survey in progress
CW10b	Visvakam B.Meanchey	(PR156D)	Reconstruction of 6.4Km DBST and Concrete Bridges	\$2,497,238.36	Advance: \$374,585.75 (submitted) -Time wise: Letter to commence:24/6 -No IPC	-UXO clearance in progress -Re-survey in progress --Soil investigation done

CW10c	Visvakam B.Meanche y	(PR-156D)	Reconstruction of 10.06Km DBST and 75m of Concrete Bridges	\$3,045,589. 37	-Advance: \$456,838.41 (Submitted) -Time wise: Letter to commence:24/6 -No IPC	- UXO clearance in progress - Re-survey in progress - Soil investigation in progress
-------	----------------------------	-----------	--	--------------------	--	--

1.3 Purpose of the report

26. The Safeguards Monitoring Report is a document which provides records to PCMU and funding agencies, ADB through a loan and AusAID through a grant, on the status of compliance with the environmental and gender requirements.

Chapter 2 – EMP Implementation and Monitoring

2.1 EMP Implementation and Monitoring Arrangement

27. The Environmental Management Plan (EMP) is given in specification for guidance on how to mitigate the environmental concerns identified in connection with this project. The EMP deals with mitigation and management measures to be taken during the project implementation in order to avoid, reduce and mitigate the adverse environmental impacts.

28. IAs will ensure that the EMP is included in the tender documents for civil works. It will form part of the contract between the IA and the selected contractor and the requirements of the EMP will be contractually binding on the contractor. The conformity of contractors with environmental contract procedures and specifications shall be regularly monitored by the PCMU through the Social and Environmental Unit (SEU) during project implementation. PCMU/SEU shall be assisted by the Construction Supervision Consultant (CSC) to undertake EMP monitoring and to prepare corresponding semi-annual reports for submission to ADB.

2.2 Scope of Environmental Monitoring

29. The main tasks being performed for environmental monitoring during the implementation phase of the project covers the following:

- Review of available reports e.g. monthly progress report
- Site verification, observation, informal interview (if necessary), taking of photographs
- Use of monitoring checklist enclosed in the EMP and EMoP
- Modify and add items to the checklist, if necessary.

2.3 Methodology

30. As the construction of subprojects under FDERP and FDERP-AF generate manageable impacts, the construction activities are also closely checked to control any negative effects at the least or minimal level. The procedures being carried out are identified below:

- Review of available reports e.g. monthly progress reports
- Site verification, observation, informal interview (if necessary), taking of photographs
- Use of monitoring checklist enclosed in the EMP and EMoP
- Modify and add items to the checklist, if necessary.

Chapter 3 – Environmental Reports and Results of Monitoring

3.1 Environmental Reports Prepared by the CSC

3.1.1 Environmental Categorization

31. Environmental Categorization was performed for sub-projects in FDERP (CW6b, CW7 and CW8) and FDERP-AF (CW9b, CW11/12, CW10a, CW13, CW15 and CW16). Based on the rapid environmental assessment conducted, sensitive areas such as cultural heritage site, protect area, wetland, mangrove, estuarine and buffer zone of protected areas are not adjacent nor within the project area. During construction, impacts on surface water quality, occupational health and safety, noise and vibration, poor sanitation and solid waste disposal are expected, however, these are minimal and short term where mitigation measures can be readily formulated and be implemented. As concluded, all sub-projects fall under Category B which means that its potential adverse environmental impacts are less adverse than those of Category A projects.

3.1.2 IEE and EMP

32. In compliance with ADB's Requirements, the Initial Environmental Examination (IEE) Report was prepared, one (1) for stage 2 and a separate document for stage 3. Environmental Management Plan (EMP) and Monitoring Plan for each subproject was also completed and officially transmitted to ADB.

3.1.3 Safeguards Monitoring and Reporting

33. To facilitate Safeguards Monitoring and Reporting on the status of EMP as well as LGAP implementation, forms are provided to the contractors which are completed and submitted to MPWT on a monthly basis. For the period, the Quarterly Safeguarding Report No. 12 was prepared and issued in June 2015.

34. The contractors shall adhere to the policies related to good governance and gender mainstreaming. As stipulated in term 2 of Social and Gender dimension under Section IV of the Special Conditions of Contract (SCC), the contractors are required to (a) use local unskilled labor and prioritized employment of women and the poor based on targets set forth in the LGAP; (b) provide equal pay for equal work; (c) provide the timely payment of wages; (d) comply with all core employment; and (e) not employ child labor.

3.2 Environmental Report of the Contractor

35. As stipulated under Clause 1.10 PROTECTION OF THE ENVIRONMENT of Part B – Special Technical Specification of the Contract Document, the Contractor shall observe and comply with all the National Laws, Government Regulations, and Ministerial Regulations pertaining to environmental protection, pollution control, waste management and biodiversity protection.

36. In support to the Special Technical Specification, subproject-specific Environmental Management Plans (EMP) and Environmental Monitoring Plans (EMoP) were prepared. Contractors are obliged to implement the measures stipulate in the plans.

37. For the period, site instructions with the monitoring forms were issued to the contractors for them to accomplish and submit to the MPWT and CSC on a monthly basis. Through close coordination with the contractors by the CSC, updates were collected and incorporated in this Safeguards Monitoring Report.

3.3 Field Monitoring by CSC/Environmental Specialists

38. Based on field monitoring and interviews conducted, the mitigation measures applied by the contractors as presented below:

- Approved borrow pit/quarry areas are being used;
- The contractors are trying to minimize the impacts to nearby the structures as much as they could;
- The contractors are trying to minimize the trees clearance as much as possible;
- There was no risk of mine and UXO
- Training on water-borne disease were provided to worker;
- Training on how to prevent the transmission of HIV/AIDS were provided to workers;
- Potable water and sanitary facilities were provided to workers;
- PPE are provided to workers;
- Traffic/safety signs are installed;
- Warning/safety signs are installed at the paces;
- Facilities such as kitchen, communication, toilet, bathroom, potable water are provided to workers but could be improved;
- There was no complaints received from local people regarding water quality which impacts by project activities,
- There was no complaints received from local people regarding to water flow;
- There were some complaints received from local people regarding to noise and dust pollution due to vehicles transporting materials;
- Not regular sprinkling of water on access roads/detour roads during day time;
- Vehicles transporting materials were not covered with tarpaulin or similar material;
- There was no spilled oil/fuel observed on various project sites. However, the contractors were also advised to improve oil/fuel storage facilities;
- Slope protection structures like stone masonry, gabion mattress, geotextile are being installed to minimize soil erosion;
- There were some complaints received from local people on health impacts by dust pollution,
- The contractor also provides workmen's compensation insurance (by Asia Insurance);
- Temporary bypass or Bailey bridge are provided;
- Contractors submitted updates regarding employment generation, hiring of women workers in compliance with LGAP;

39. In general it is observed that the projects have small significant impacts on the environment and people as well. The implementations of the above mitigation measures reduce the occurrence of the following negative impacts: Loss of trees (during site clearing and quarrying of construction materials), damage to existing structures, risk of land mine or UXO, dust generation control, noise and vibration disturbance, water contamination, water-disease control, loss of agricultural land for borrow pits, soil erosion protection, generation of wastes, safety and health, traffic congestion, transmission of sexually transmitted disease (HIV), while the generation of employment is enhanced.

40. As per professional judgment, the contractors were able to minimize the impacts to acceptable levels during pre-construction and construction period. Please see details in Annex 1 regarding the status of EMP compliance with other concerns reflected in Annex 2 or Monitoring Checklist.

Chapter 4 – Conclusion and Recommendation

4.1 Conclusion

41. During the 2015 second quarter's safeguards monitoring, the MPWT as assisted by the Construction Supervision Consultant performed regular site inspections, issued instructions to the contractors and had convened series of meetings. Parties were given the opportunity to discuss and resolve environmental and social concerns. Contractors were also provided with forms to facilitate gathering of information on compliance with safeguards requirements. In the overall, the contractors implemented the mitigation measures needed with some follow-ups required to enhance compliance with the Environmental Management Plan.

4.2 Recommendations

42. Close supervision should be continued on the remaining items under construction to fully implement the appropriate mitigation measures or as recommended in the Environmental Management Plan. Contractors should perform self-monitoring works including the implementation of the Labor and Gender Action Plan. Monthly reports with proper documentation should be submitted to MPWT and CSC.

43. Some of the mitigation measures that need to be monitored if properly and timely implemented are as follows:

- Regular sprinkling of water of access roads/detour roads during day time;
- Regular collection and disposal of spoils and excavated materials to designated location to avoid sedimentation/siltation of nearby water bodies;
- Proper storage of toxic materials like fuel and oil;
- Provide the first aid kit and additional sanitary facilities at site camp and worker camps;
- PPE should be provided to workers at construction sites;
- Backfill open borrow pits;
- Improve sanitary facilities for workers;
- Adequate sign boards, advisory on speed limit, humps, lights, barriers, refectories should be placed on critical locations;
- Vehicles transporting materials must be covered with tarpaulin or similar material;
- The contractor have to install soil erosion/slop protection structure;
- Appropriate plants species shall be planted on the slopes and other areas considered;
- Contractors were advised to repair of damaged when the subprojects will be completed;
- Worker camps must be clean up when the subprojects will be completed.

Chapter 5 - Annexes

Annex 1: Status of EMP Compliance

A. Pre-Construction and construction phases

Project Activity	Potential Environmental Impacts	Proposed Mitigation Measures	Status of Compliance
Detailed Engineering Design and construction phases: Earthworks, site clearing, hauling of construction materials, piling works, Operation of construction/workers' camps, borrow operation, hauling of construction wastes to spoil sites	1. Loss of trees (during site clearing and quarrying of construction materials)	<ul style="list-style-type: none"> On the design stage, ensure that there are acceptable alternative borrow pit areas that would have an overall beneficial advantage in terms of improved livelihood and reduced environmental impacts. 	<ul style="list-style-type: none"> Complied during clearance and earthwork activities construction for subprojects.
	2. Damage to existing structures	<ul style="list-style-type: none"> The design should maximize benefits or avoid impacts on assets. Resettlement framework for the Project and Cambodian laws, policies, and regulations should be complied with. 	<ul style="list-style-type: none"> The contractors are trying to minimize the impact to nearby structures as much as they could. The contractors installed soil erosion/slope protection structures
	3. Risk of land mine or UXO	<ul style="list-style-type: none"> Consultative meetings with local communities are necessary to know clearly where there are risks of mines or UXO. Unsafe areas should be cleared before project implementation. 	<ul style="list-style-type: none"> UXO clearance for CW16 was 100% while it is in progress for CW 9a, CW10b and CW10c. There was no any accident encountered from mines or UXO.
Environmental Engineering	4. Dust generation	<ul style="list-style-type: none"> The Contractor will be required to formulate and implement a Dust Abatement Program that includes spraying of water on roads and work areas within villages close to the road. Vehicles transporting materials should be covered with tarpaulin or similar material 	<ul style="list-style-type: none"> Sprinkling of water on access road including detour road should be done on regular basis. Vehicles transporting materials need cover like tarpaulin to minimize dust pollution.

Project Activity	Potential Environmental Impacts	Proposed Mitigation Measures	Status of Compliance
	5. Noise and vibration	<ul style="list-style-type: none"> The Contractor should consider proper scheduling of construction activities particularly in sensitive areas. Acoustic barriers or enclosures for working areas should be provided. 	<ul style="list-style-type: none"> No complaints received from the people so far as proper scheduling of works is being done.
	6. Water contamination	<ul style="list-style-type: none"> Waste/used oil should be collected, properly stored and disposed to an approved site (according to national standard). Storage should be in drums raised off the ground and properly covered to keep rain water out. Lining or pan should be provided to contain any spills and simplify clean up. The Contractor shall prepare a Spill Management Plan (including measures to be taken and equipment to be used) to ensure adequate clean-up of any spills. 	<ul style="list-style-type: none"> There was no spilled oil/fuel into water resources as observed. Moreover, the contractors were also advised to improve oil/fuel storage facilities. There were no complaints received from local people regarding water contamination impacts by project activities. There were complaints received from local people regarding on toxic waste from ice factory nearby the subproject CW11 in Kampong Thnom province. The municipality has been notified, however outside the scope of Contract CW11/12.
	7. Water-borne disease	<ul style="list-style-type: none"> Fill-up depressed areas to prevent water ponding which may be used as breeding ground for disease-carrying organisms mosquitoes. Borrow pits may be utilized for aquaculture or be developed as water reservoir for community use. 	<ul style="list-style-type: none"> No complaints received regarding water-borne disease from local people for all subprojects. Training were provided on water-borne disease to project's workers.
	8. Water flow	<ul style="list-style-type: none"> The Constructor has to ensure that road and bridge construction will not be impacted of water flow. The alternative approaches should be: 	<ul style="list-style-type: none"> Complied. There were no complaints received from people regarding water flow.

Project Activity	Potential Environmental Impacts	Proposed Mitigation Measures	Status of Compliance
		<ul style="list-style-type: none"> ii. provide adequate cross drainage of water flow iii. construct divert of water flow. 	
	9. Loss of agricultural land for borrow pits	<ul style="list-style-type: none"> The contractor will use only licensed borrow operators. There will be no side borrow permitted, unless agreed to with roadside residents. The contractor will be responsible for rehabilitating any borrow sites opened and operated by them 	<ul style="list-style-type: none"> Complied.
	10. Loss of trees	<ul style="list-style-type: none"> Tree clearing should be avoided as much as possible. The borrow pits will need to be re-vegetated before being handed back to the owner, or could be used for aquaculture. Tree planting should be carried out in the appropriate location of the road in consultation with competent authority(ies) regarding the species of trees to be used. 	<ul style="list-style-type: none"> Complied Appropriate vegetation will be planted on the slope and other areas required after project completed.
	11. Soil erosion	<ul style="list-style-type: none"> The contractor will be required to implement soil erosion control to minimize soil erosion and sedimentation of waterways. The alternative approaches should be: (1) provide adequate cross drainage to avoid over flow or flooding and (2) re-vegetation of erosion-prone areas. 	<ul style="list-style-type: none"> Complied Slope protection structures like stone masonry, gabion mattress, geotextile are installed to minimize soil erosion.
	12. Generation of	<ul style="list-style-type: none"> Sufficient garbage containers should be 	<ul style="list-style-type: none"> Unsuitable excavated materials and other residual

Project Activity	Potential Environmental Impacts	Proposed Mitigation Measures	Status of Compliance
	wastes	<p>provided in construction camps and work sites</p> <ul style="list-style-type: none"> • Employ regular disposal of waste in an approved landfill or site • Maintain cleanliness/orderliness at camps and work sites 	<p>construction wastes are brought to designated dumpsite</p> <ul style="list-style-type: none"> • Contractor should improve construction camp, living quarters, particularly a sanitary facility
	13. Safety and Health	<ul style="list-style-type: none"> • The Contractor should formulate and implement a Health and Safety Plan to protect both the public and the workers. A trained first aid personnel and health facility should be provided on site. • Provide potable water and sanitary facilities to workers • Install warning signs like "safety first" at the construction area including fences or enclosures • Provide Protective Personal Equipment (PPE) to workers e.g. safety shoes, hardhats, earplugs, etc. 	<ul style="list-style-type: none"> • PPE are provided to workers • Facilities such as kitchen, communication, toilet, bathroom, first aid kits, and potable water are provided to workers. • Warning/safety signs are installed. • The contractor also provides workmen's compensation insurance (by Asia Insurance). • No complaints received on health impacts by project activities for both public and workers
	14. Traffic congestion	<ul style="list-style-type: none"> • Contractor should perform the following: i) orient their drivers or equipment operators to comply with the required speed limit. (ii) drive at low speeds, especially in market, school, hospital, urban areas. (iii) keep the roadway or bypass accessible to commuters to avoid traffic jams. (iv) park at designated area. • Prepare and implement a Traffic 	<ul style="list-style-type: none"> • Temporary bypass and Bailey bridges are provided. • Traffic safety measures should be implemented e.g. placing of traffic /warning signs including advisory on speed limit, provision of humps on the approach of the bridge, light/reflectorizes especially on deep excavations and work areas, deployment of flagmen on critical locations.

Project Activity	Potential Environmental Impacts	Proposed Mitigation Measures	Status of Compliance																																								
		<p>Management Plan</p> <ul style="list-style-type: none"> • Provide appropriate storage area for the construction materials • Detour road should be provided and accessible to commuters • Temporary access of equipment and trucks must be established and approved by the sub-district officials 																																									
	15. Transmission of sexually transmitted disease (HIV)	<ul style="list-style-type: none"> • Prepare and implement a Health and Safety Plan including education of workers on sexually transmitted disease should be done. 	<ul style="list-style-type: none"> • Workers were well trained regarding HIV/AIDS. • There no complaints received from local people regarding HIV/AIDS infection. 																																								
	16. Generation of employment	<ul style="list-style-type: none"> • The contractor should comply with the Labor and Gender Action Plan; employ people from villages including women and unskilled workers. 	<ul style="list-style-type: none"> • Contractors submitted updates regarding employment generation and LGAP implementation. Data as of April - May - June 2015 are tabulated below: <table border="1"> <thead> <tr> <th colspan="4">% women employed in the project (2015)</th></tr> <tr> <th></th><th>April</th><th>May</th><th>June</th></tr> </thead> <tbody> <tr> <td>CW6b</td><td>31</td><td>30</td><td>30</td></tr> <tr> <td>CW7</td><td>0</td><td>0</td><td>0</td></tr> <tr> <td>CW8</td><td>35</td><td>36</td><td>40</td></tr> <tr> <td>CW9b</td><td>30</td><td>31</td><td>28</td></tr> <tr> <td>CW11/12</td><td>31</td><td>27</td><td>0</td></tr> <tr> <td>CW10a</td><td>37</td><td>37</td><td>37</td></tr> <tr> <td>CW13</td><td>0</td><td>0</td><td>17</td></tr> <tr> <td>CW15</td><td>0</td><td>0</td><td>0</td></tr> </tbody> </table>	% women employed in the project (2015)					April	May	June	CW6b	31	30	30	CW7	0	0	0	CW8	35	36	40	CW9b	30	31	28	CW11/12	31	27	0	CW10a	37	37	37	CW13	0	0	17	CW15	0	0	0
% women employed in the project (2015)																																											
	April	May	June																																								
CW6b	31	30	30																																								
CW7	0	0	0																																								
CW8	35	36	40																																								
CW9b	30	31	28																																								
CW11/12	31	27	0																																								
CW10a	37	37	37																																								
CW13	0	0	17																																								
CW15	0	0	0																																								

Annex 2: Monitoring Checklist (FDERP)

A. CW6b: Replacement of 3 Structures on PR 270 (Kampong Cham)

General information	DD/MM/YY	30/06/2015		
	Report prepared by	Andrelita Sto Domingo		
	Name of road and location of construction site	PR No.270-CW6b-FDERP-MPWT		
	Name of contractor/ subcontractor	Seaboard		
Permits, agreements	Request for obtaining a permit for quarry/borrow pit opening during construction	<input checked="" type="checkbox"/> Yes	<input type="checkbox"/> No	<input type="checkbox"/> N/A
	Request for obtaining an agreement for disposal of construction waste	<input checked="" type="checkbox"/> Yes	<input type="checkbox"/> No	<input type="checkbox"/> N/A
Management of construction sites	Proper location of construction site/camp	<input checked="" type="checkbox"/> Yes	<input type="checkbox"/> No	<input type="checkbox"/> N/A
	Aggregate/asphalt batching plants properly licensed and approved by Ministry of Environment (MOE).	<input checked="" type="checkbox"/> Yes	<input type="checkbox"/> No	<input type="checkbox"/> N/A
	Availability of proper storage for fuel, oil and construction materials	<input checked="" type="checkbox"/> Yes	<input type="checkbox"/> No	<input type="checkbox"/> N/A
	Proper maintenance of construction machinery and equipment (prevent leakage of fuel, oil, lubricants, etc.)	<input checked="" type="checkbox"/> Yes	<input type="checkbox"/> No	<input type="checkbox"/> N/A
	Availability of temporary storage areas for excavated and demolished materials and construction wastes within the existing right-of-way	<input checked="" type="checkbox"/> Yes	<input type="checkbox"/> No	<input type="checkbox"/> N/A
	Timely removal of excavated and demolished materials and construction waste from the temporary storage areas to planned and agreed places	<input checked="" type="checkbox"/> Yes	<input type="checkbox"/> No	<input type="checkbox"/> N/A
	Use covered trucks for transportation of construction materials and waste	<input checked="" type="checkbox"/> Yes	<input type="checkbox"/> No	<input type="checkbox"/> N/A
	Clean the surrounding area from dust by water sprinkling in construction zone (when necessary)	<input checked="" type="checkbox"/> Yes	<input type="checkbox"/> No	<input type="checkbox"/> N/A
	Clean/ wash tires of vehicles before they get to dwellings and/or drive on highways (when necessary)	<input checked="" type="checkbox"/> Yes	<input type="checkbox"/> No	<input type="checkbox"/> N/A
	Implementation of works at the established time (e.g. work during daytime 06.00 to 18.00)	<input type="checkbox"/> Yes	<input checked="" type="checkbox"/> No	<input type="checkbox"/> N/A
	Installation of road signs in construction sites, camps and along access roads	<input checked="" type="checkbox"/> Yes	<input type="checkbox"/> No	<input type="checkbox"/> N/A
	Ensure proper sanitary/ hygienic conditions for workers at the construction site	<input checked="" type="checkbox"/> Yes	<input type="checkbox"/> No	<input type="checkbox"/> N/A
Management of construction sites	Restoration of the area of construction sites and camps when the construction works are over	<input checked="" type="checkbox"/> Yes	<input type="checkbox"/> No	<input type="checkbox"/> N/A
	Replanting/planting of finished work areas (i.e. embankment slopes, borrow pits, etc.)	<input checked="" type="checkbox"/> Yes	<input type="checkbox"/> No	<input type="checkbox"/> N/A

B. CW7 Emergency Reconstruction of 8.1km DBST of PR 270 (Kampong Cham)

General information	DD/MM/YY	30/06/2015		
	Report prepared by	Andrelita Sto Domingo		
	Name of road and location of construction site	PR No.270-CW7-FDERP-MPWT		
	Name of contractor/ subcontractor	Tang Kim Eng		
Permits, agreements	Request for obtaining a permit for quarry/borrow pit opening during construction	<input checked="" type="checkbox"/> Yes	<input type="checkbox"/> No	<input type="checkbox"/> N/A
	Request for obtaining an agreement for disposal of construction waste	<input checked="" type="checkbox"/> Yes	<input type="checkbox"/> No	<input type="checkbox"/> N/A
Management of construction sites	Proper location of construction site/camp	<input checked="" type="checkbox"/> Yes	<input type="checkbox"/> No	<input type="checkbox"/> N/A
	Aggregate/asphalt batching plants properly licensed and approved by Ministry of Environment (MOE).	<input checked="" type="checkbox"/> Yes	<input type="checkbox"/> No	<input type="checkbox"/> N/A
	Availability of proper storage for fuel, oil and construction materials	<input checked="" type="checkbox"/> Yes	<input type="checkbox"/> No	<input type="checkbox"/> N/A
	Proper maintenance of construction machinery and equipment (prevent leakage of fuel, oil, lubricants, etc.)	<input checked="" type="checkbox"/> Yes	<input type="checkbox"/> No	<input type="checkbox"/> N/A
	Availability of temporary storage areas for excavated and demolished materials and construction wastes within the existing right-of-way	<input checked="" type="checkbox"/> Yes	<input type="checkbox"/> No	<input type="checkbox"/> N/A
	Timely removal of excavated and demolished materials and construction waste from the temporary storage areas to planned and agreed places	<input checked="" type="checkbox"/> Yes	<input type="checkbox"/> No	<input type="checkbox"/> N/A
	Use covered trucks for transportation of construction materials and waste	<input checked="" type="checkbox"/> Yes	<input type="checkbox"/> No	<input type="checkbox"/> N/A
	Clean the surrounding area from dust by water sprinkling in construction zone (when necessary)	<input checked="" type="checkbox"/> Yes	<input type="checkbox"/> No	<input type="checkbox"/> N/A
	Clean/ wash tires of vehicles before they get to dwellings and/or drive on highways (when necessary)	<input checked="" type="checkbox"/> Yes	<input type="checkbox"/> No	<input type="checkbox"/> N/A
	Implementation of works at the established time (e.g. work during daytime 06.00 to 18.00)	<input type="checkbox"/> Yes	<input checked="" type="checkbox"/> No	<input type="checkbox"/> N/A
	Installation of road signs in construction sites, camps and along access roads	<input checked="" type="checkbox"/> Yes	<input type="checkbox"/> No	<input type="checkbox"/> N/A
	Ensure proper sanitary/ hygienic conditions for workers at the construction site	<input checked="" type="checkbox"/> Yes	<input type="checkbox"/> No	<input type="checkbox"/> N/A
Management of construction sites	Restoration of the area of construction sites and camps when the construction works are over	<input checked="" type="checkbox"/> Yes	<input type="checkbox"/> No	<input type="checkbox"/> N/A
	Replanting/planting of finished work areas (i.e. embankment slopes, borrow pits, etc.)	<input checked="" type="checkbox"/> Yes	<input type="checkbox"/> No	<input type="checkbox"/> N/A

C. CW8 Emergency Reconstruction of 34.6km DBST of PR 159 (Battambang and Banteay Meanchey)

General information	DD/MM/YY	30/06/2015		
	Report prepared by	Andrelita Sto Domingo		
	Name of road and location of construction site	PR No.159-CW8-FDERP-MPWT		
	Name of contractor/ subcontractor	Ung Simsa/Seaboard		
Permits, agreements	Request for obtaining a permit for quarry/borrow pit opening during construction	<input checked="" type="checkbox"/> Yes	<input type="checkbox"/> No	<input type="checkbox"/> N/A
	Request for obtaining an agreement for disposal of construction waste	<input checked="" type="checkbox"/> Yes	<input type="checkbox"/> No	<input type="checkbox"/> N/A
Management of construction sites	Proper location of construction site/camp	<input checked="" type="checkbox"/> Yes	<input type="checkbox"/> No	<input type="checkbox"/> N/A
	Aggregate/asphalt batching plants properly licensed and approved by Ministry of Environment (MOE).	<input checked="" type="checkbox"/> Yes	<input type="checkbox"/> No	<input type="checkbox"/> N/A
	Availability of proper storage for fuel, oil and construction materials	<input checked="" type="checkbox"/> Yes	<input type="checkbox"/> No	<input type="checkbox"/> N/A
	Proper maintenance of construction machinery and equipment (prevent leakage of fuel, oil, lubricants, etc.)	<input checked="" type="checkbox"/> Yes	<input type="checkbox"/> No	<input type="checkbox"/> N/A
	Availability of temporary storage areas for excavated and demolished materials and construction wastes within the existing right-of-way	<input checked="" type="checkbox"/> Yes	<input type="checkbox"/> No	<input type="checkbox"/> N/A
	Timely removal of excavated and demolished materials and construction waste from the temporary storage areas to planned and agreed places	<input checked="" type="checkbox"/> Yes	<input type="checkbox"/> No	<input type="checkbox"/> N/A
	Use covered trucks for transportation of construction materials and waste	<input checked="" type="checkbox"/> Yes	<input type="checkbox"/> No	<input type="checkbox"/> N/A
	Clean the surrounding area from dust by water sprinkling in construction zone (when necessary)	<input checked="" type="checkbox"/> Yes	<input type="checkbox"/> No	<input type="checkbox"/> N/A
	Clean/ wash tires of vehicles before they get to dwellings and/or drive on highways (when necessary)	<input checked="" type="checkbox"/> Yes	<input type="checkbox"/> No	<input type="checkbox"/> N/A
	Implementation of works at the established time (e.g. work during daytime 06.00 to 18.00)	<input type="checkbox"/> Yes	<input checked="" type="checkbox"/> No	<input type="checkbox"/> N/A
	Installation of road signs in construction sites, camps and along access roads	<input checked="" type="checkbox"/> Yes	<input type="checkbox"/> No	<input type="checkbox"/> N/A
	Ensure proper sanitary/ hygienic conditions for workers at the construction site	<input checked="" type="checkbox"/> Yes	<input type="checkbox"/> No	<input type="checkbox"/> N/A
Management of construction sites	Restoration of the area of construction sites and camps when the construction works are over	<input checked="" type="checkbox"/> Yes	<input type="checkbox"/> No	<input type="checkbox"/> N/A
	Replanting/planting of finished work areas (i.e. embankment slopes, borrow pits, etc.)	<input checked="" type="checkbox"/> Yes	<input type="checkbox"/> No	<input type="checkbox"/> N/A

Annex 3: Monitoring Checklist (FDERP-AF)

A. CW9b Emergency Reconstruction of Prek Chiek Bridge on PR 270 (Kampong Cham)

General information	DD/MM/YY	30/06/2015		
	Report prepared by	Andrelita Sto Domingo		
	Name of road and location of construction site	PR No.270-CW9b-FDERP-AF-MPWT		
	Name of contractor/ subcontractor	Seaboard		
Permits, agreements	Request for obtaining a permit for quarry/borrow pit opening during construction	<input checked="" type="checkbox"/> Yes	<input type="checkbox"/> No	<input type="checkbox"/> N/A
	Request for obtaining an agreement for disposal of construction waste	<input checked="" type="checkbox"/> Yes	<input type="checkbox"/> No	<input type="checkbox"/> N/A
Management of construction sites	Proper location of construction site/camp	<input checked="" type="checkbox"/> Yes	<input type="checkbox"/> No	<input type="checkbox"/> N/A
	Aggregate/asphalt batching plants properly licensed and approved by Ministry of Environment (MOE).	<input checked="" type="checkbox"/> Yes	<input type="checkbox"/> No	<input type="checkbox"/> N/A
	Availability of proper storage for fuel, oil and construction materials	<input checked="" type="checkbox"/> Yes	<input type="checkbox"/> No	<input type="checkbox"/> N/A
	Proper maintenance of construction machinery and equipment (prevent leakage of fuel, oil, lubricants, etc.)	<input checked="" type="checkbox"/> Yes	<input type="checkbox"/> No	<input type="checkbox"/> N/A
	Availability of temporary storage areas for excavated and demolished materials and construction wastes within the existing right-of-way	<input checked="" type="checkbox"/> Yes	<input type="checkbox"/> No	<input type="checkbox"/> N/A
	Timely removal of excavated and demolished materials and construction waste from the temporary storage areas to planned and agreed places	<input checked="" type="checkbox"/> Yes	<input type="checkbox"/> No	<input type="checkbox"/> N/A
	Use covered trucks for transportation of construction materials and waste	<input checked="" type="checkbox"/> Yes	<input type="checkbox"/> No	<input type="checkbox"/> N/A
	Clean the surrounding area from dust by water sprinkling in construction zone (when necessary)	<input checked="" type="checkbox"/> Yes	<input type="checkbox"/> No	<input type="checkbox"/> N/A
	Clean/ wash tires of vehicles before they get to dwellings and/or drive on highways (when necessary)	<input checked="" type="checkbox"/> Yes	<input type="checkbox"/> No	<input type="checkbox"/> N/A
	Implementation of works at the established time (e.g. work during daytime 06.00 to 18.00)	<input type="checkbox"/> Yes	<input checked="" type="checkbox"/> No	<input type="checkbox"/> N/A
	Installation of road signs in construction sites, camps and along access roads	<input checked="" type="checkbox"/> Yes	<input type="checkbox"/> No	<input type="checkbox"/> N/A
	Ensure proper sanitary/ hygienic conditions for workers at the construction site	<input checked="" type="checkbox"/> Yes	<input type="checkbox"/> No	<input type="checkbox"/> N/A
Management of construction sites	Restoration of the area of construction sites and camps when the construction works are over	<input checked="" type="checkbox"/> Yes	<input type="checkbox"/> No	<input type="checkbox"/> N/A
	Replanting/planting of finished work areas (i.e. embankment slopes, borrow pits, etc.)	<input checked="" type="checkbox"/> Yes	<input type="checkbox"/> No	<input type="checkbox"/> N/A

B. CW11/12 Emergency Reconstruction of 8.15km of PR 264E and 7.375km of PR 264D (Kampong Thom)

General information	DD/MM/YY	30/06/2015		
	Report prepared by	Andrelita Sto Domingo		
	Name of road and location of construction site	PR No.264E&264D-CW11/12-FDERP-AF-MPWT		
	Name of contractor/ subcontractor	Seaboard		
Permits, agreements	Request for obtaining a permit for quarry/borrow pit opening during construction	<input checked="" type="checkbox"/> Yes	<input type="checkbox"/> No	<input type="checkbox"/> N/A
	Request for obtaining an agreement for disposal of construction waste	<input checked="" type="checkbox"/> Yes	<input type="checkbox"/> No	<input type="checkbox"/> N/A
Management of construction sites	Proper location of construction site/camp	<input checked="" type="checkbox"/> Yes	<input type="checkbox"/> No	<input type="checkbox"/> N/A
	Aggregate/asphalt batching plants properly licensed and approved by Ministry of Environment (MOE).	<input checked="" type="checkbox"/> Yes	<input type="checkbox"/> No	<input type="checkbox"/> N/A
	Availability of proper storage for fuel, oil and construction materials	<input checked="" type="checkbox"/> Yes	<input type="checkbox"/> No	<input type="checkbox"/> N/A
	Proper maintenance of construction machinery and equipment (prevent leakage of fuel, oil, lubricants, etc.)	<input checked="" type="checkbox"/> Yes	<input type="checkbox"/> No	<input type="checkbox"/> N/A
	Availability of temporary storage areas for excavated and demolished materials and construction wastes within the existing right-of-way	<input checked="" type="checkbox"/> Yes	<input type="checkbox"/> No	<input type="checkbox"/> N/A
	Timely removal of excavated and demolished materials and construction waste from the temporary storage areas to planned and agreed places	<input checked="" type="checkbox"/> Yes	<input type="checkbox"/> No	<input type="checkbox"/> N/A
	Use covered trucks for transportation of construction materials and waste	<input checked="" type="checkbox"/> Yes	<input type="checkbox"/> No	<input type="checkbox"/> N/A
	Clean the surrounding area from dust by water sprinkling in construction zone (when necessary)	<input checked="" type="checkbox"/> Yes	<input type="checkbox"/> No	<input type="checkbox"/> N/A
	Clean/ wash tires of vehicles before they get to dwellings and/or drive on highways (when necessary)	<input checked="" type="checkbox"/> Yes	<input type="checkbox"/> No	<input type="checkbox"/> N/A
	Implementation of works at the established time (e.g. work during daytime 06.00 to 18.00)	<input type="checkbox"/> Yes	<input checked="" type="checkbox"/> No	<input type="checkbox"/> N/A
	Installation of road signs in construction sites, camps and along access roads	<input checked="" type="checkbox"/> Yes	<input type="checkbox"/> No	<input type="checkbox"/> N/A
	Ensure proper sanitary/ hygienic conditions for workers at the construction site	<input checked="" type="checkbox"/> Yes	<input type="checkbox"/> No	<input type="checkbox"/> N/A
Management of construction sites	Restoration of the area of construction sites and camps when the construction works are over	<input checked="" type="checkbox"/> Yes	<input type="checkbox"/> No	<input type="checkbox"/> N/A
	Replanting/planting of finished work areas (i.e. embankment slopes, borrow pits, etc.)	<input checked="" type="checkbox"/> Yes	<input type="checkbox"/> No	<input type="checkbox"/> N/A

C. CW10a Emergency Reconstruction of 8.0km DBST of PR 156D (Banteay Meanchey)

General information	DD/MM/YY	30/06/2015		
	Report prepared by	Andrelita Sto Domingo		
	Name of road and location of construction site	PR No.156D-CW10a-FDERP-AF-MPWT		
	Name of contractor/ subcontractor	Ung Siamsia		
Permits, agreements	Request for obtaining a permit for quarry/borrow pit opening during construction	<input checked="" type="checkbox"/> Yes	<input type="checkbox"/> No	<input type="checkbox"/> N/A
	Request for obtaining an agreement for disposal of construction waste	<input checked="" type="checkbox"/> Yes	<input type="checkbox"/> No	<input type="checkbox"/> N/A
Management of construction sites	Proper location of construction site/camp	<input checked="" type="checkbox"/> Yes	<input type="checkbox"/> No	<input type="checkbox"/> N/A
	Aggregate/asphalt batching plants properly licensed and approved by Ministry of Environment (MOE).	<input checked="" type="checkbox"/> Yes	<input type="checkbox"/> No	<input type="checkbox"/> N/A
	Availability of proper storage for fuel, oil and construction materials	<input checked="" type="checkbox"/> Yes	<input type="checkbox"/> No	<input type="checkbox"/> N/A
	Proper maintenance of construction machinery and equipment (prevent leakage of fuel, oil, lubricants, etc.)	<input checked="" type="checkbox"/> Yes	<input type="checkbox"/> No	<input type="checkbox"/> N/A
	Availability of temporary storage areas for excavated and demolished materials and construction wastes within the existing right-of-way	<input checked="" type="checkbox"/> Yes	<input type="checkbox"/> No	<input type="checkbox"/> N/A
	Timely removal of excavated and demolished materials and construction waste from the temporary storage areas to planned and agreed places	<input checked="" type="checkbox"/> Yes	<input type="checkbox"/> No	<input type="checkbox"/> N/A
	Use covered trucks for transportation of construction materials and waste	<input checked="" type="checkbox"/> Yes	<input type="checkbox"/> No	<input type="checkbox"/> N/A
	Clean the surrounding area from dust by water sprinkling in construction zone (when necessary)	<input checked="" type="checkbox"/> Yes	<input type="checkbox"/> No	<input type="checkbox"/> N/A
	Clean/ wash tires of vehicles before they get to dwellings and/or drive on highways (when necessary)	<input checked="" type="checkbox"/> Yes	<input type="checkbox"/> No	<input type="checkbox"/> N/A
	Implementation of works at the established time (e.g. work during daytime 06.00 to 18.00)	<input type="checkbox"/> Yes	<input checked="" type="checkbox"/> No	<input type="checkbox"/> N/A
	Installation of road signs in construction sites, camps and along access roads	<input checked="" type="checkbox"/> Yes	<input type="checkbox"/> No	<input type="checkbox"/> N/A
	Ensure proper sanitary/ hygienic conditions for workers at the construction site	<input checked="" type="checkbox"/> Yes	<input type="checkbox"/> No	<input type="checkbox"/> N/A
Management of construction sites	Restoration of the area of construction sites and camps when the construction works are over	<input checked="" type="checkbox"/> Yes	<input type="checkbox"/> No	<input type="checkbox"/> N/A
	Replanting/planting of finished work areas (i.e. embankment slopes, borrow pits, etc.)	<input checked="" type="checkbox"/> Yes	<input type="checkbox"/> No	<input type="checkbox"/> N/A

D. CW13 Emergency Reconstruction of 18.75km Laterite of PR 1570 (Battambang)

General information	DD/MM/YY	30/06/2015		
	Report prepared by	Andrelita Sto Domingo		
	Name of road and location of construction site	PR No.1570-CW13-FDERP-AF-MPWT		
	Name of contractor/ subcontractor	Ung Siamsia		
Permits, agreements	Request for obtaining a permit for quarry/borrow pit opening during construction	√ Yes	<input type="checkbox"/> No	<input type="checkbox"/> N/A
	Request for obtaining an agreement for disposal of construction waste	√ Yes	<input type="checkbox"/> No	<input type="checkbox"/> N/A
Management of construction sites	Proper location of construction site/camp	√ Yes	<input type="checkbox"/> No	<input type="checkbox"/> N/A
	Aggregate/asphalt batching plants properly licensed and approved by Ministry of Environment (MOE).	√ Yes	<input type="checkbox"/> No	<input type="checkbox"/> N/A
	Availability of proper storage for fuel, oil and construction materials	√ Yes	<input type="checkbox"/> No	<input type="checkbox"/> N/A
	Proper maintenance of construction machinery and equipment (prevent leakage of fuel, oil, lubricants, etc.)	√ Yes	<input type="checkbox"/> No	<input type="checkbox"/> N/A
	Availability of temporary storage areas for excavated and demolished materials and construction wastes within the existing right-of-way	√ Yes	<input type="checkbox"/> No	<input type="checkbox"/> N/A
	Timely removal of excavated and demolished materials and construction waste from the temporary storage areas to planned and agreed places	√ Yes	<input type="checkbox"/> No	<input type="checkbox"/> N/A
	Use covered trucks for transportation of construction materials and waste	√ Yes	<input type="checkbox"/> No	<input type="checkbox"/> N/A
	Clean the surrounding area from dust by water sprinkling in construction zone (when necessary)	√ Yes	<input type="checkbox"/> No	<input type="checkbox"/> N/A
	Clean/ wash tires of vehicles before they get to dwellings and/or drive on highways (when necessary)	√ Yes	<input type="checkbox"/> No	<input type="checkbox"/> N/A
	Implementation of works at the established time (e.g. work during daytime 06.00 to 18.00)	<input type="checkbox"/> Yes	√ No	<input type="checkbox"/> N/A
	Installation of road signs in construction sites, camps and along access roads	√ Yes	<input type="checkbox"/> No	<input type="checkbox"/> N/A
	Ensure proper sanitary/ hygienic conditions for workers at the construction site	√ Yes	<input type="checkbox"/> No	<input type="checkbox"/> N/A
Management of construction sites	Restoration of the area of construction sites and camps when the construction works are over	√ Yes	<input type="checkbox"/> No	<input type="checkbox"/> N/A
	Replanting/planting of finished work areas (i.e. embankment slopes, borrow pits, etc.)	√ Yes	<input type="checkbox"/> No	<input type="checkbox"/> N/A

E. CW15 Emergency Reconstruction of 6km Concrete Pavement of NR 63 (Siem Reap)

General information	DD/MM/YY	30/06/2015		
	Report prepared by	Andrelita Sto Domingo		
	Name of road and location of construction site	NR No.63-CW15-FDERP-AF-MPWT		
	Name of contractor/ subcontractor	Ung Siamsia		
Permits, agreements	Request for obtaining a permit for quarry/borrow pit opening during construction	<input checked="" type="checkbox"/> Yes	<input type="checkbox"/> No	<input type="checkbox"/> N/A
	Request for obtaining an agreement for disposal of construction waste	<input checked="" type="checkbox"/> Yes	<input type="checkbox"/> No	<input type="checkbox"/> N/A
Management of construction sites	Proper location of construction site/camp	<input checked="" type="checkbox"/> Yes	<input type="checkbox"/> No	<input type="checkbox"/> N/A
	Aggregate/asphalt batching plants properly licensed and approved by Ministry of Environment (MOE).	<input checked="" type="checkbox"/> Yes	<input type="checkbox"/> No	<input type="checkbox"/> N/A
	Availability of proper storage for fuel, oil and construction materials	<input checked="" type="checkbox"/> Yes	<input type="checkbox"/> No	<input type="checkbox"/> N/A
	Proper maintenance of construction machinery and equipment (prevent leakage of fuel, oil, lubricants, etc.)	<input checked="" type="checkbox"/> Yes	<input type="checkbox"/> No	<input type="checkbox"/> N/A
	Availability of temporary storage areas for excavated and demolished materials and construction wastes within the existing right-of-way	<input checked="" type="checkbox"/> Yes	<input type="checkbox"/> No	<input type="checkbox"/> N/A
	Timely removal of excavated and demolished materials and construction waste from the temporary storage areas to planned and agreed places	<input checked="" type="checkbox"/> Yes	<input type="checkbox"/> No	<input type="checkbox"/> N/A
	Use covered trucks for transportation of construction materials and waste	<input checked="" type="checkbox"/> Yes	<input type="checkbox"/> No	<input type="checkbox"/> N/A
	Clean the surrounding area from dust by water sprinkling in construction zone (when necessary)	<input checked="" type="checkbox"/> Yes	<input type="checkbox"/> No	<input type="checkbox"/> N/A
	Clean/ wash tires of vehicles before they get to dwellings and/or drive on highways (when necessary)	<input checked="" type="checkbox"/> Yes	<input type="checkbox"/> No	<input type="checkbox"/> N/A
	Implementation of works at the established time (e.g. work during daytime 06.00 to 18.00)	<input type="checkbox"/> Yes	<input checked="" type="checkbox"/> No	<input type="checkbox"/> N/A
	Installation of road signs in construction sites, camps and along access roads	<input checked="" type="checkbox"/> Yes	<input type="checkbox"/> No	<input type="checkbox"/> N/A
	Ensure proper sanitary/ hygienic conditions for workers at the construction site	<input checked="" type="checkbox"/> Yes	<input type="checkbox"/> No	<input type="checkbox"/> N/A
	Restoration of the area of construction sites and camps when the construction works are over	<input checked="" type="checkbox"/> Yes	<input type="checkbox"/> No	<input type="checkbox"/> N/A
Management of construction sites	Replanting/planting of finished work areas (i.e. embankment slopes, borrow pits, etc.)	<input checked="" type="checkbox"/> Yes	<input type="checkbox"/> No	<input type="checkbox"/> N/A

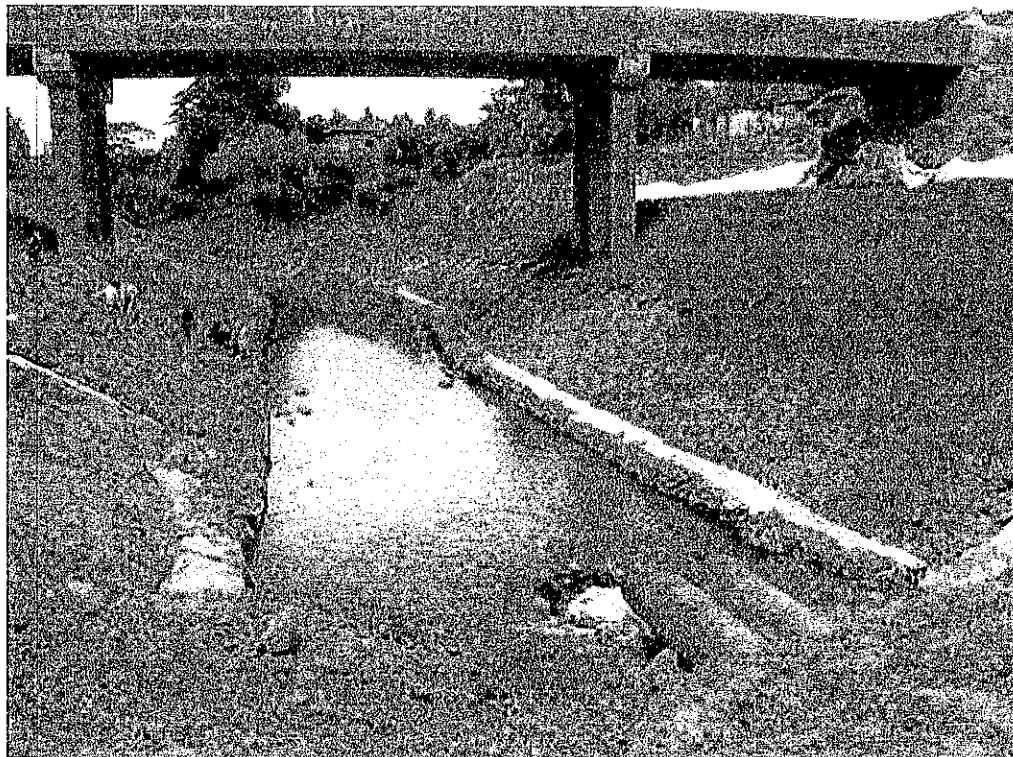
F. CW16 - Emergency Reconstruction of 11.20 km of DBST Road on PR 265F (Siem Reap)

General information	DD/MM/YY	30/06/2015		
	Report prepared by	Andrelita Sto Domingo		
	Name of road and location of construction site	PR 265F -CW16- FDERP-AF-MPWT		
	Name of contractor/ subcontractor	Ung Siamsia		
Permits, agreements	Request for obtaining a permit for quarry/borrow pit opening during construction	<input checked="" type="checkbox"/> Yes	<input type="checkbox"/> No	<input type="checkbox"/> N/A
	Request for obtaining an agreement for disposal of construction waste	<input checked="" type="checkbox"/> Yes	<input type="checkbox"/> No	<input type="checkbox"/> N/A
Management of construction sites	Proper location of construction site/camp	<input checked="" type="checkbox"/> Yes	<input type="checkbox"/> No	<input type="checkbox"/> N/A
	Aggregate/asphalt batching plants properly licensed and approved by Ministry of Environment (MOE).	<input type="checkbox"/> Yes	<input type="checkbox"/> No	<input checked="" type="checkbox"/> N/A
	Availability of proper storage for fuel, oil and construction materials	<input checked="" type="checkbox"/> Yes	<input type="checkbox"/> No	<input type="checkbox"/> N/A
	Proper maintenance of construction machinery and equipment (prevent leakage of fuel, oil, lubricants, etc.)	<input checked="" type="checkbox"/> Yes	<input type="checkbox"/> No	<input type="checkbox"/> N/A
	Availability of temporary storage areas for excavated and demolished materials and construction wastes within the existing right-of-way	<input checked="" type="checkbox"/> Yes	<input type="checkbox"/> No	<input type="checkbox"/> N/A
	Timely removal of excavated and demolished materials and construction waste from the temporary storage areas to planned and agreed places	<input checked="" type="checkbox"/> Yes	<input type="checkbox"/> No	<input type="checkbox"/> N/A
	Use covered trucks for transportation of construction materials and waste	<input checked="" type="checkbox"/> Yes	<input type="checkbox"/> No	<input type="checkbox"/> N/A
	Clean the surrounding area from dust by water sprinkling in construction zone (when necessary)	<input checked="" type="checkbox"/> Yes	<input type="checkbox"/> No	<input type="checkbox"/> N/A
	Clean/ wash tires of vehicles before they get to dwellings and/or drive on highways (when necessary)	<input checked="" type="checkbox"/> Yes	<input type="checkbox"/> No	<input type="checkbox"/> N/A
	Implementation of works at the established time (e.g. work during daytime 06.00 to 18.00)	<input type="checkbox"/> Yes	<input checked="" type="checkbox"/> No	<input type="checkbox"/> N/A
	Installation of road signs in construction sites, camps and along access roads	<input checked="" type="checkbox"/> Yes	<input type="checkbox"/> No	<input type="checkbox"/> N/A
	Ensure proper sanitary/ hygienic conditions for workers at the construction site	<input checked="" type="checkbox"/> Yes	<input type="checkbox"/> No	<input type="checkbox"/> N/A
Management of construction sites	Restoration of the area of construction sites and camps when the construction works are over	<input type="checkbox"/> Yes	<input type="checkbox"/> No	<input checked="" type="checkbox"/> N/A
	Replanting/planting of finished work areas (i.e. embankment slopes, borrow pits, etc.)	<input type="checkbox"/> Yes	<input type="checkbox"/> No	<input checked="" type="checkbox"/> N/A

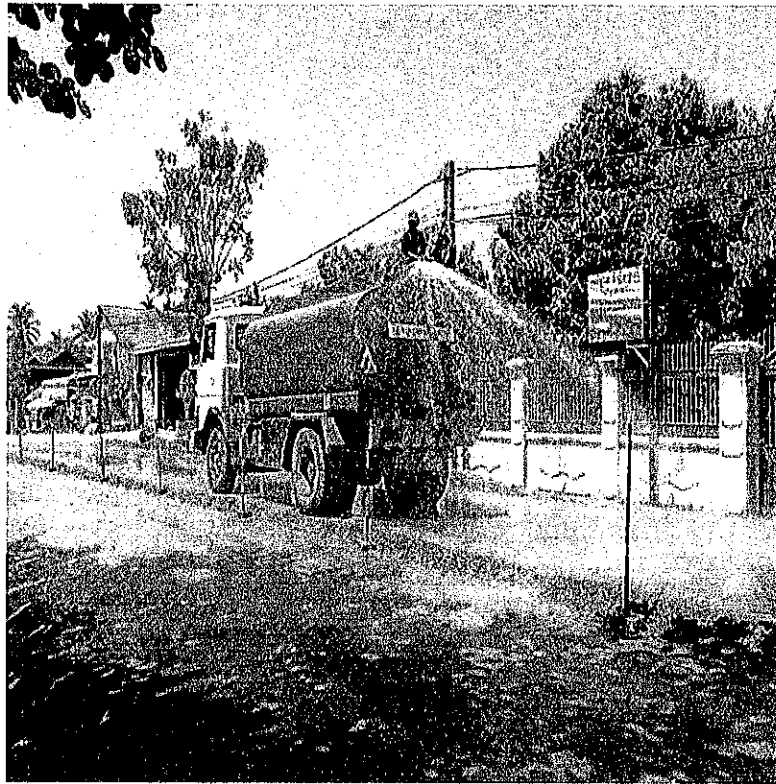
Annex 4: Photos



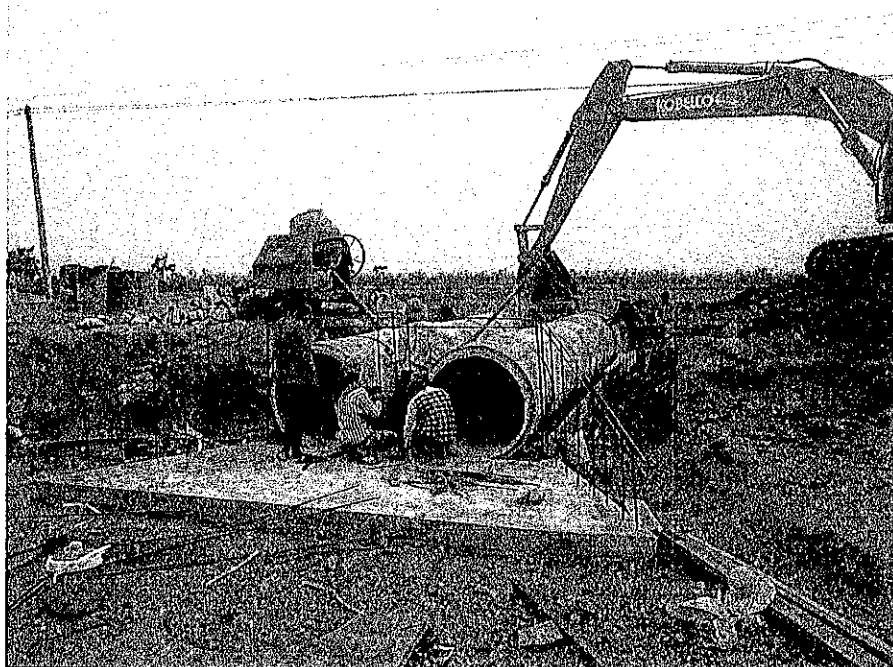
Unskilled women workers were involved in the project



Slope protection works to minimize soil erosion



Sprinkling of water to minimize dust pollution



Installation of pipe culvert



Warning signs are installed in the work areas for safety