

Initial Environmental Examination

December 2014

Cambodia: Flood Damage Emergency Reconstruction Project-Additional Financing

Prepared by Ministry of Public Works and Transport for the Asian Development Bank.

This initial environmental examination is a document of the borrower. The views expressed herein do not necessarily represent those of ADB's Board of Directors, Management, or staff, and may be preliminary in nature.

In preparing any country program or strategy, financing any project, or by making any designation of or reference to a particular territory or geographic area in this document, the Asian Development Bank does not intend to make any judgments as to the legal or other status of any territory or area.

→ Sokha

KINGDOM OF CAMBODIA
Nation Religion King



MINISTRY OF PUBLIC WORKS AND TRANSPORT

ASIAN DEVELOPMENT BANK

Cambodia:
Flood Damage Emergency Reconstruction Project –
Additional Financing (FDERP-AF)

CW10b: Reconstruction of DBST 4.50 Km PR No. 156D and 1 RC
Bridge in Banteay Meanchey Province

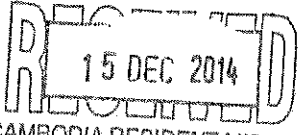
INITIAL ENVIRONMENTAL EXAMINATION REPORT

Ministry of Public Works and Transport

Phnom Penh, November 2014

ABBREVIATIONS

ADB	Asian Development Bank
APs	Affected Persons
BOD	Biological Oxygen Demand
CTDP	Corridor Towns Development Project
CW	Civil Work
DBST	Double Bituminous Surface Treatment
DDIS	Detailed Design and Implementation Supervision
DoE	Department of Environment
EA	Executing Agency
EARF	Environmental Assessment and Review Framework
EIA	Environmental Impact Assessment
EMoP	Environmental Monitoring Plan
EMP	Environmental Management Plan
FDERP-AF	Flood Damage Emergency Reconstruction Project – Additional Financing
FS	Feasibility Study
GMS	Greater Mekong Sub-region
GoC	Government of Cambodia
GPS	Global Positioning System
GRC	Grievance Redress Committee
GRM	Grievance Redress Mechanism
ha	Hectare
HIV/AIDS	Human Immunodeficiency Virus/Acquired Immune Deficiency Syndrome
IA	Implementing Agency
IBA	Important Bird Area
IEE	Initial Environmental Examination
IEIA	Initial Environmental Impact Assessment
IUCN	International Union for Conservation of Nature
JICA	Japan International Cooperation Agency
MEF	Ministry of Economy and Finance
MOE	Ministry of Environment
MOWRAM	Ministry of Water Resources and Meteorology
MPWT	Ministry of Public Works and Transport
MRD	Ministry of Rural Development
NGO	None Government Organization

ASIAN DEVELOPMENT BANK

 CAMBODIA RESIDENT MISSION

NR	National Road
NTFP	Non-Timber Forest Products
O&M	Operation and Maintenance
PAs	Protect Areas
PCMU	Project Coordination and Monitoring Unit
PDPWT	Provincial Department of Public Works and Transport
PDRD	Provincial Department of Rural Development
PIU	Project Implementation Unit
PPTA	Project Preparation TA
PR	Provincial Road
REA	Rapid Environmental Assessment
RGC	Royal Government of Cambodia
RI	Riel
ROW	Right of Way
RP	Resettlement Plan
SEIA	Summary Environmental Impact Assessment
SEU	Social and Environmental Unit
SPS	ADB's Safeguard Policy Statement (2009)
SS	Suspend Solid
TA	Technical Assistance
TSP	Total Suspended Particulates
USD	United States Dollar
UXO	Unexploded Ordnance
WB	World Bank

CONTENTS

	Page
Abbreviations.....	i
Contents.....	iii
Tables.....	v
Figures.....	v
I. Executive Summary.....	1
II. Introduction.....	2
III. Policy, Legal, and Administrative Framework.....	2
A. Policy Framework.....	2
B. Legal Framework.....	3
1. Laws on Environment.....	3
2. Laws on Historical Monuments.....	3
3. Laws on Nature Reserves.....	3
4. Laws on Wildlife.....	3
5. Subsidiary Laws on Environmental Protection.....	4
C. Administrative Framework.....	5
1. Protected Areas.....	5
2. Important Bird Area.....	6
3. Cambodian IEE Requirements.....	7
IV. Description of Project.....	7
A. CW10b – Provincial Road No. 156D.....	7
B. CW10b – Bridge.....	9
V. Description of the Environment.....	10
A. Physical Resources.....	10
1. Geography.....	10
2. Climate.....	10
3. Rainfall.....	10
4. Temperature.....	10
5. Topography.....	10
6. Air quality.....	11
7. Surface Water Quality.....	12
8. Groundwater.....	14
B. Biological Environment.....	15
1. Forest and vegetation.....	15
2. Protected areas.....	15
3. Tonle Sap Biosphere Reserve.....	18

4. Wildlife and Endangered Species	19
5. Aquatic Resources	20
C. Socio-Economic Conditions.....	24
1. Population	24
2. Poverty	24
3. Employment	24
4. Land Use and Facilities	25
5. Cultural and Archeological Sites	25
VI. Anticipated Environmental Impacts and Mitigation Measures.....	25
A. Environmental Assessment Methodology.....	25
B. Screening of environmental impacts.....	26
1. Environmental impacts related to project design.....	34
2. Environmental issues related to project construction	34
3. Environmental issues related to project operation	37
4. Potential positive environmental and social impacts by the project	37
VII. Analysis of Alternatives.....	46
VIII. Information Disclosure, Consultation and Participation.....	47
IX. Grievance Redress Mechanism.....	48
X. Environmental Management Plan.....	51
XI. Conclusion and Recommendation	52
XII. Appendices	53
Appendix 1: Annex of Sub-Decree No 72 ANRK. BK. Date 11 August 1999 (List of the Projects Require an IEIA or EIA)	53
Appendix 2: Environmental and Social Monitoring Report Outline.....	57
Appendix 3: Photos	58
Appendix 4: List of participants attended the public meeting	60
XIII. References.....	63

TABLES

Table 1: Air Quality Data in Phnom Penh (2003)	11
Table 2: Cambodia national standard for surface water quality	12
Table 3: Natural protection areas in Cambodia.....	16
Table 4: Reptiles and amphibians in the project areas	19
Table 5: Birds in the project areas.....	19
Table 6: Fish commonly found in the Mekong River and floodplain areas.....	20
Table 7: Status of employment.....	24
Table 8: Environmental management plan (EMP)	27
Table 9: Environmental monitoring plan (EMoP).....	38
Table 10: Rapid assessment of road reconstruction option	46

FIGURES

Figure 1: Project location map.....	8
Figure 2: Bridge typical cross section.....	9
Figure 3: Geology map.....	11
Figure 4: Surface water within the project area.....	14
Figure 5: Groundwater is used by the local people	14
Figure 6: Land use map	15
Figure 7: Map of protected areas in Cambodia	17
Figure 8: Map of Tonle Sap Biosphere Reserve	18
Figure 9: Public meeting with authorities and people living within the project area	47
Figure 10: Investigation procedure.....	50

I. EXECUTIVE SUMMARY

1. The Asian Development Bank (ADB) and the Royal Government of Cambodia (RGC) agreed to implement the Flood Damage Emergency Reconstruction Project – Additional Financing (FDERP-AF), with the funding through a loan from the ADB and grant from the Australian Government (Department of Foreign Affairs and Trade). The project which was divided into three (3) Outputs aims to restore and reestablish the use of flood-damaged infrastructures. Among those outputs, output 1 is the rehabilitation of the national and provincial roads including some bridges which will be implemented by the Ministry of Public Works and Transport (MPWT).

2. Under Stage 3 Subprojects of FDERP-AF/MPWT Output 1 have been classified as Category "B" based on ADB's project categorization scheme, hence, preparation of Initial Environmental Examination (IEE) Report is required. This report covers the CW10b subproject of DBST 4.50 km (PR No. 156D) located in Banteay Meanchey province.

3. A review of project-related reports, gathering of secondary data, site inspection and public meeting with local people and authorities have been undertaken. Expected impacts and corresponding mitigation measures have been identified. The assessment includes verification if any supplementary study is required.

4. Some of the negative impacts expected are dust, noise, air quality, surface water quality, hazards, including generation of solid wastes and wastewater. These impacts are short term and deemed insignificant when monitored and managed with timely and efficient implementation of mitigation measures in the environmental management plan (EMP).

5. During operation phase, implementation of the project is expected to deliver significant social benefits. Of the expected advantages that can be realized by beneficiaries of the project, this will include reduced risk to life and property caused by floods, an improvement to livelihood, largely because of reduced travel time and associated costs. The temporary nuisance caused by emergency reconstruction of the DBST 4.50 km will be minimized through agreed and monitored mitigation measures, in consultation with the local community and key stakeholders.

6. Some recommended approaches that can be implemented to avoid or reduce any negative impacts are outlined as follows:

- Adhere to and implement the environmental management and monitoring plans presented in this IEE report will mitigate any adverse consequences;
- Promote good cooperation among stakeholders, especially between the IA, EA and local authorities;
- Consult the local communities together with the IAs to update all stakeholders about concerns and issues arising during project construction and operation; and
- Implement any further investigations that may be needed to develop suitable design of borrow pits with a planned set of multiple use options for the lot owners.

II. INTRODUCTION

7. In September and early October of 2011 Cambodia was struck by typhoons Nesat and Nalgae which caused severe and widespread floods and destruction in the country. In December 2011, ADB conducted a reconnaissance mission to the country after which ADB issued a MOU which summarized the discussions and understandings reached between Royal Government of Cambodia (RGC) in order to process an Emergency Assistance Loan (EAL) in an effort to provide assistance through a program which should be implemented as early as possible.

8. The "Flood Damage Emergency Reconstruction Project" (FDERP) is an emergency project which was initiated through an EAL; co-funded between ADB and Australia Aid, in order to support a number of reconstruction projects.

9. The scope of this program was further formalized through a MOU in February 2012. The program aims at meeting the needs of repair and/or infrastructure replacements through a range of urgent reconstruction priorities which were caused by the 2011 floods. In May 2012 the first three projects of a planned 12 individual projects were awarded through the Implementation of Ministry of Public Works and Transport (MPWT) with construction start up in early June.

10. The overall scope of FDERP is managed through three Implementation Agencies (IA-i.e. Ministries) which in turn are reporting to the Executive Agency (MEF). The Component under MPWT is one of such Implementation Agencies. The objective of the MPWT projects is to restore critical public and social infrastructure assets in order to restore livelihood and access in project Provinces. This is done through reconstruction of critical bridges and National and Provincial roads.

11. After the MOU of February 2012 was issued, the scope and funding of the various sub projects have been formalized and amended twice; first by an MOUs issued by ADB in July 2012 and more recently in February 2013. The scope and estimated procurement budgets of the program have been revised at the subsequent ADB Missions in 2012 and 2013.

12. The projects which were earmarked as critical included reconstruction of damaged infrastructures in the Provinces of Prey Veng, Kampong Cham, Kampong Thom, Siem Reap, Banteay Meanchey and Battambang.

III. POLICY, LEGAL, AND ADMINISTRATIVE FRAMEWORK

A. Policy Framework

13. In 1993 the Royal Government of Cambodia enacted a new Constitution with provision on environmental considerations. Specifically, Article 59 states that "The State shall protect the environment and balance of abundant natural resources and establish a precise plan of management of land, water, air, wind, geology, ecological system, mines, energy, petrol and gas, rock and sand, gems, forests and forestry products, wildlife, fish and aquatic resource". This follows the establishment of the Ministry of Environment (MOE) on the 23rd November 1993.

14. The hierarchy of legislations in Cambodia is presented below:

- Royal Decree signed by the King
- Sub-decree signed by the Prime Minister
- Ministerial Decision signed by a Minister
- Regulation issued by a Ministry

15. The major legislation in Cambodia is the Royal Decree which ratifies laws passed by parliament. These can be supplemented by "prakas" or ministerial decisions. These laws allow sub decrees and regulations to be passed which can stipulate procedures and standards to be met in order to ensure compliance with the law. Many of these sub-decrees and standards have been drafted but have not yet been ratified by parliament. However, contractors are still expected to make sure their operations comply with the draft regulations.

B. Legal Framework

1. Laws on Environment

16. Law on Environmental Protection and Natural Resources Management 1996 (NS/RKM/1296/36) came into force and it requires the government to prepare national and regional environmental plans and sub-decrees concerning a wide range of environmental issues, including EIAs, pollution prevention and control, public participation and access to information.

17. Other ministries explicitly mentioned at that time were Ministry of Water Resources, Hydrology and Meteorology and Ministry of Land Use Management, Urbanization and Construction. The list was later expanded to include the Ministry of Public Works and Transport, Ministry of Agriculture, Forestry and Fisheries, Ministry of Rural Development, Ministry of Health and Ministry of Tourism.

2. Laws on Historical Monuments

18. There is a general law in Cambodia which covers all national monuments. This is the "Law on Protection of Cultural and National Heritage, 1996". This is supplemented by the "Decision on the Definition of Three (3) Zones to Protect Temple's Surrounding Areas in all Provinces and Municipalities except Angkor Wat, 1996". These laws protect small temples or ancient structures.

3. Laws on Nature Reserves

19. Royal Decree "Protected Natural Areas" issued in November 1993 gives protection to environment, land, forests, wetlands and coastal zones. This decree covers twenty three (23) locations representing 18% of Cambodia's total area and is under the jurisdiction of MoE.

4. Laws on Wildlife

20. The "Joint Prakas of the Ministry of Environment and the Ministry of Agriculture on Prohibition of Hunting and Catching of Wildlife Animals, 1996" specifically bans hunting of animals and birds for food. A contractor's workers must observe this law.

5. Subsidiary Laws on Environmental Protection

a) Sub-decrees and Regulations

21. The "Law on Environmental Protection and Natural Resource Management" enables the Ministry of Environment to pass sub-decrees and regulations to protect the environment. This subsidiary legislation lays down quantitative standards which must be met by contractors in their operation.

22. Several sub-decrees are already ratified into laws. Others have been drafted and are expected to become law in the near future. Established standards are represented by parameters and values which are used as guide to determine whether or not a regulation is complied. Even if the regulations are in draft form, the contractors are obliged to comply it.

b) Sub-Decree on Air and Noise Pollution Control (1999)

(1) Air Quality

23. The air pollution regulations are contained in Sub-Decree on Air and Noise Pollution. For dust control, there should no visible emissions from stockpiles of materials, crushers or batching plants. At sensitive receptors a standard of TSP < 0.33 mg/m³ 24 hour average should be met. All vehicles should be well maintained and comply with the air quality regulations.

(2) Noise

24. The noise regulations are contained in Sub-Decree on Air and Noise Pollution. The regulations do not stipulate a level for noise from construction sites but refer to mixed commercial / industrial and residential property. Neither do they give the measurement method. Therefore the following standards are recommended. Noise levels at the perimeter of any site should not exceed:

- Continuous Equivalent Level (Leq) = 75dB(A) 12 hours daytime (0700-1900)
- Continuous Equivalent Level (Leq) = 65dB(A) 12 hours nighttime (1900-0700)

25. The descriptor "Continuous Equivalent Level (Leq) is a commonplace measurement and most noise monitoring equipment measures it directly. The measurement is made at the construction site perimeter which makes monitoring easier as it does not require to be exactly on the sensitive area. The level of 75dB(A) daytime / 65 dB(A) nighttime can be adopted which is commonly used in countries such as Singapore and Malaysia.

(3) Vibration

26. There is no standard for vibration in Cambodia. Therefore the following standard is recommended. The vibration levels at any vibration sensitive property or location should be less than 1mm/second peak particle velocity (ppv) as derived from the US Bureau of Mines publications for avoidance of damage and the UK GLC (Greater London Council) standard for avoidance of nuisance.

c) Sub-Decree on Water Pollution Control (No. 27 ANRK.BK 1999)

27. As a minimum, all discharges of liquid wastes from construction camps, work sites or operations, to streams or water courses should be: BOD ≤ 50mg/L; Turbidity < 5 NTU; SS ≤ 50 mg/L; Temperature < 45°C; pH = 6-9; Oil & Grease ≤ 5 mg/L and Dissolved Oxygen > 4mg/L.

28. There is no legal standard for performance of septic tanks but efficiency of its operation should be monitored, that is absence of smell and no overflowing.

d) Sub-Decree on Solid Waste Management (No. 36 ANRK.BK 1999)

29. Under the Sub-Decree on Solid Waste Management (No. 36 ANRK.BK 1999), Article 7 "the disposal of waste in public sites or anywhere that is not allowed by authorities shall be strictly prohibited". There are no quantitative parameters given but good sensible practice is expected. Such practices include the following:

- All general waste and food waste should be disposed to government approved landfill.
- All demolition waste must be transported to a government approved location.
- Used oils and other toxic substances should be properly stored. Its treatment or disposal should be coursed through a licensed transporter and treater. Coordinate with the MoE if assistance is needed.

30. Failure to employ sensible precautions may cause sanitation problems to workers living in camps and also may result in prosecution.

e) Hazardous Substances

31. There is no specific regulation for hazardous substances in Cambodia. This aspect is covered in the Sub-Decree on Water Pollution Control Annex 1 and Sub-Decree on Solid Waste Management, which give details of classifications of what are defined as hazardous substances. Any hazardous substances must be stored correctly and only disposed in a manner approved by the MoE.

C. Administrative Framework

32. There are two particular types of areas of special ecological interest in relation to this project. There are:

1. Protected Areas

33. Cambodia has a network of 23 natural protected areas managed by the Ministry of Environment (MoE). These areas cover approximately 3.27 million hectares or 18% of Cambodia's land area and include most of its important habitats. The Forest Administration has also designated protected forests (from cancelled logging concessions) bringing the total area under protection to around 25% which is more than twice the global average. Protected Areas are sites which are protected by Royal Decrees, Laws and Regulations. Such mandatory stipulations are promulgated in Khmer language. These have been obtained and if necessary, translated. The Khmer version takes precedence over the translated version.

34. In 2008 Cambodia introduced the Protected Area Law (No. NS/RKM/0208/007), which defines:

- (i) National Parks
- (ii) Wildlife Sanctuaries
- (iii) Protected Landscapes
- (iv) Multiple Use Areas

- (v) Ramsar Sites
- (vi) Biosphere Reserves
- (vii) Natural Heritage Sites, and
- (viii) Marine Parks

35. Each kind of protected area is described as follows:

- **National Parks** (IUCN category II) – Natural and scenic area of significance for their scientific, educational and recreational values.
- **Wildlife Sanctuaries** (IUCN category IV) – Natural area where nationally significant species of flora or fauna, natural communities, or physical features require specific intervention for their perpetuation.
- **Protected Landscapes** (IUCN category V) – Nationally significant natural and semi-natural landscapes that must be maintained to provide opportunities for recreation.
- **Multiple-Use Areas** (IUCN category VIII) – Areas that provide for the sustainable use of water resources, timber, wildlife, fish, pasture, and recreation with the conservation of nature primarily oriented to support these economic activities. The Tonle Sap Multiple-Use Area was nominated as Cambodia's first Biosphere Reserve in 1997. The Boeung Chmar portion of Tonle Sap Multiple-Use Area (28,000 ha) is designated as a Ramsar site.
- **Ramsar Sites** – There are two sites in the IUCN categories IV and VIII above and one site in the middle stretches of the Mekong River between Stung Treng and the border with Laos.

36. The Law on Forestry Management prohibits the hunting of wildlife within such protected areas as well as maintaining check points and providing rangers.

37. The Ministry of Environment (MoE) has an active community education program to promote environmental awareness especially within the rural communities.

38. This law is recent (2008) and many of the protected areas predate this by many years. Both the original legislation and the most current have been reviewed during this project.

2. Important Bird Area

39. An Important Bird Area (IBA) is an area recognized as being a globally important habitat for the conservation of bird populations. Currently, there are around 10,000 IBA worldwide. The program was developed and sites are identified by Bird Life International. These sites are small enough to be entirely conserved and differ in their character, habitat or ornithological importance from the surrounding habitat.

40. Bird Life International is an international organization working to protect the world's birds and their habitats. It is a global conservation federation with a worldwide network of over 100 partner organizations. Bird Life International was founded in 1922 and was originally known as the International Council for Bird Preservation, acting as a lobbying

group. It changed its name in 1993 to Bird Life International and is the official IUCN Authority for the Red List for birds.

41. Often IBAs form part of a country's existing protected area network, and so are protected under national legislation. Both the Cambodia's PAWS and the Phnom Samkos Wildlife Sanctuary contain designated IBAs.

3. Cambodian IEE Requirements

42. On 11 August 1999, a Sub-decree on EIA Processes (72 ANRK.BK) was promulgated requiring an initial EIA (IEIA) or EIA for selected projects listed in the sub-decree annex to be submitted by public or private project owners to the MOE for review. (See Appendix 1).

43. The Annex to sub-decree No 72 ANRK.BK dated on 11, August 1999 on "*List of the projects that require an IEIA or EIA*" refers to "National Road Construction \geq 100 Kilometers and bridges \geq 30 tones". As this project is rehabilitation of existing roads, and bridges are 25 tones capacity, an EIA is not required by MoE.

IV. DESCRIPTION OF PROJECT

A. CW10b – Provincial Road No. 156D

44. Provincial Road 156D connects between NR No. 5 and NR No. 6. It starts at PK 350+800 of NR No. 5 in Russey Krok village, Russey Krok commune, Mongkol Borei district and it ends at NR No. 6 in Preah Net Preah district.

45. The road is not possible in the rainy season and during the 2013 floods the road was covered by up to 2m of flood water. According to present conditions and the size of the repair works, the proposed improvements to PR 156D have been divided into 3 sub-projects. CW10a forms part of the Stage 2 works, whereas as CW10b and CW10c are included as Stage 3 sub-projects.

46. The sub-project CW10b comprises 1 reinforced concrete bridge (with pre-stressed concrete deck) at kilometre point 14+500, which is 75.0m in length and 10m in width. The project also includes 4.50km DBST (with embankment, 15cm sub-grade, sub-base and base-course M30 with small improvements to road drainage). The total width will be 8m with 6m carriageway and 2 x 1m shoulders), see Figure 1.

- After the combined improvement of CW10a, CW10b and CW10c to DBST, the road will be passable even during or after floods. This road will connect Mongkol Borey District Centre and the junction of NR 5 to Preah Net Preah District Centre and the junction of NR 6 it will become an important bypass. This road serves 4 communes and 2 districts with a population of 93,500.
- Facilitate improved motorized public transport
- With appropriate water crossing drainage and raised embankments, the road will not be damaged by normal floods in the next rainy season;
- Reduced vehicle operating costs for road users and reduced travel time for agricultural produce;
- Maintain and improve tourism;
- Contribute to economic growth.

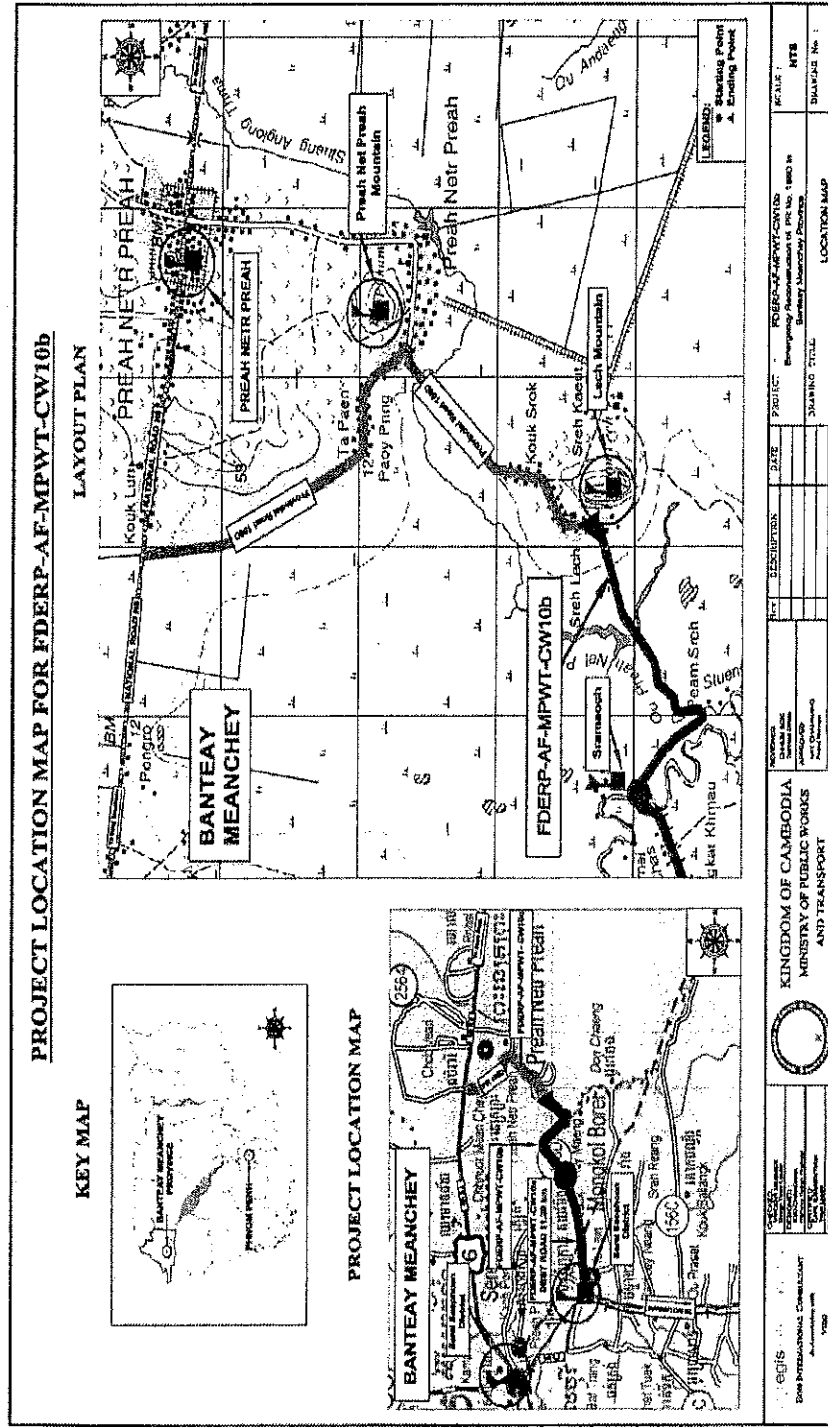


Figure 1: Project location map

IEE-CW10b

26/11/2014



Figure 4: Surface water within the project area

8. Groundwater

62. Groundwater is used by the local people both for domestic and commercial uses shows in Figure 5. Based on interview, water quality and quantity are affected during dry season. Monitoring of volume and quality, however, has not been undertaken in the project area.



Figure 5: Groundwater is used by the local people

B. Biological Environment

1. Forest and vegetation

63. The natural forest in the project area has been converted into agricultural lands as shown in Figure 6. Common vegetation observed in the subprojects' locations are coconut, mango, papaya, banana, jackfruit and others, however, these will not be removed during construction of the project.

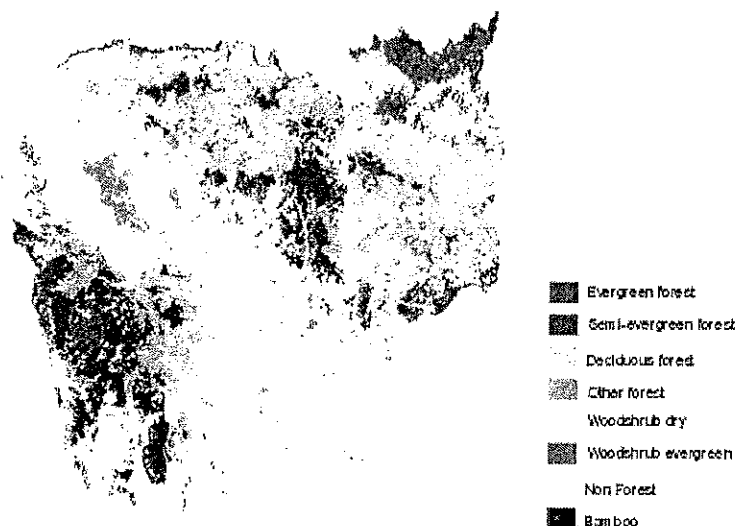


Figure 6: Land use map

Source: CTD, 2012

2. Protected areas

64. Cambodia in 1993, 23 protected areas is covered 3.3 million ha equivalent to more than 18% of the country territory had been designated and categorized as National Parks (742,250 ha); Wildlife Sanctuary (2,030,000 ha); Protected Landscape (9,700 ha) and Multiple Use Management Areas (403,950 ha). Of all the PAs, three cover mixed terrestrial and coastal habitats, one includes terrestrial, coastal and near-shore marine waters and islands, one covers inland wetlands (316,250 ha) and seven are trans-boundary PAs. Marine habitats remain poorly represented in the current PAs system. In addition, ten Forest Protected Areas covering 1.49 million ha have been established. Five PAs have potential for trans-boundary collaboration. The protected area system is mainly based on forest reserves developed in the 1950s as well as limited information in the early 1990s. This information was incomplete and uncertain. Habitats that are considered missing or underrepresented include lowland evergreen forests, revering forests, limestone forest and marine areas (Third National Report on the Biological Diversity Conservation, 2006).

65. While the 23 PAs were established under the authority of the Ministry of Environment, other 10 protected forests Areas have been designed under the Ministry of Agriculture, Forestry and Fisheries. The Forest Protected Areas system covers over 1.49 million ha. Additionally, almost all the mountain ecosystems in the country fall within the national PAs and Forest Protected Areas systems.

66. In Cambodia, a number of protected conservation areas are approximately covered 5.4 million hectares. There are consisting of 7 national parks, 9 wildlife sanctuaries, 3 protected landscape areas, and 3 protected areas. The national parks are located in the coastal, mountain, plateau and lake region which are covered 742,300 million hectares and wildlife sanctuaries in these regions are covered 4.138 million hectares. The protected landscapes areas are covered 97,000 hectares include archaeological and cultural sites and protected areas are covered 403,900 hectares, see Figure 7 and Table 3 is indicated on the protected areas within the Cambodia.

67. Based on this information, this subproject is not located in the natural protection areas in Cambodia. CW10b is located in Preah Net Preah commune, Preah Net Preah district, Banteay Meanchey province.

Table 3: Natural protection areas in Cambodia

Description	Surface (ha)	Location
I. National Parks		
1. KIRIRUM	35,000	Kg. Speu and Koh Kong
2. BOKOR	140,000	Kampot
3. KEP	5,000	Kapot
4. REAM	150,000	Sihanouk Ville
5. BOTUM SAKOR	171,250	Koh Kong
6. PHNOM KOULEN	37,500	Siem Reap
7. VIRAK CHEY	332,500	Stung Treng and Rattanak Kiri.
II. Wildlife sanctuaries/Preserves		
8. PHNOM ORAL	253,750	Koh Kong, Pursat, Kg. Chhnang
9. PEAM KRASAU	23,750	Koh Kong
10. PHNOM SAMKOS	333,750	Koh Kong, Pursat
11. RONEAM DONSAM	178,750	Battambang
12. KOULEN PRUM TEP	402,500	Siem Reap and Preah Vihear
13. BENG PER	242,500	Kg. Thom
14. LUMPHAT	250,000	Rattanak Kiri and Mondul Kiri.
15. PHNOM PRICH	222,500	Mondul Kiri and Kratie
16. PHNOM NAMLEAR	47,500	Mondul Kiri
17. SNUOL	75,000	Kratie
III. Protected scenic view areas		
18. ANGKOR	10,800	Siem Reap
19. BANTEAY CHIMMAR	81,200	Banteay Mean Chey
20. PREAH VIHEAR	5,000	Preah Vihear
IV. Multi purposes areas		
21. DONG PENG	27,700	Koh Kong
22. SAMLOT	60,000	Battambang
23. TONLE SAP	316,250	Kg. Chhnang, Kg. Thom, Siem Reap, Battambang and Pursat.

Source: The Royal Decree on Natural Protected Areas, Nov. 1993.

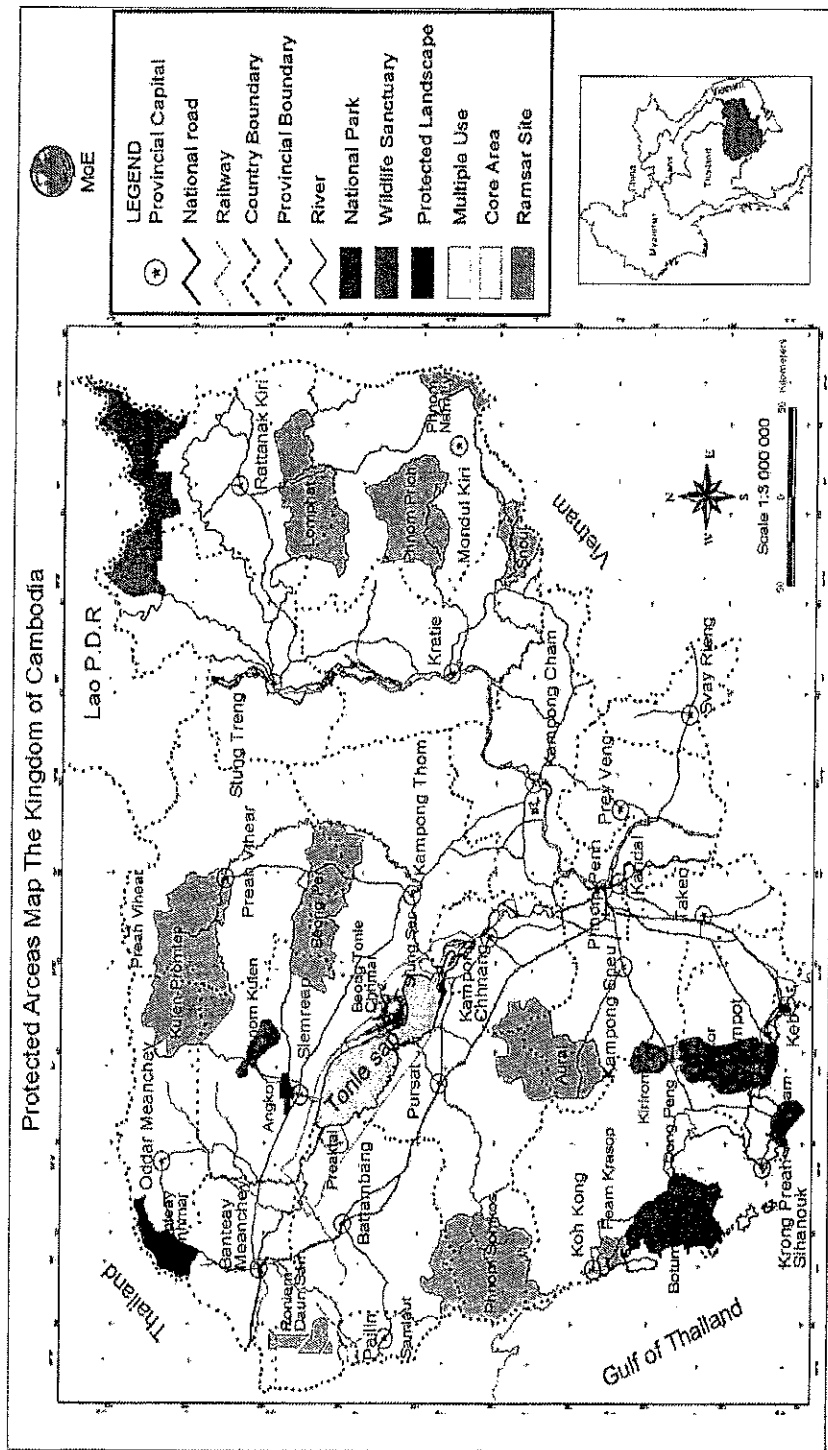


Figure 7: Map of protected areas in Cambodia

IEE-CW10b

26/11/2014

3. Tonle Sap Biosphere Reserve

68. The Tonle Sap Biosphere Reserve, which covers the lake plus a significant part of the floodplain, was established by Royal Decree in 2001. It is divided into three zones, including core zones, buffer zones and transitional zones (Figure 8). In the transitional zone, sustainable natural resource management practices are to be established, while the buffer zone is an area where activities are to be compatible with conservation, in order to protect the core zone. The three core zones are Prek Toal for bird colonies (21,343 ha), Boeng Chhmar as bird feeding areas (14,560 ha) and Stung Sen as unique gallery forest (6,355 ha). Boeng Chhmar also has been designed as a Ramsar site. At present, only Prek Toal is protected to some degree, although even here poaching remains a significant problem.

69. Based on map below, subproject CW10b is located in the Transitional Area. At Tonle Sap Great Lake of Cambodia, owing to the lake is importance for fisheries as well as for conservation.

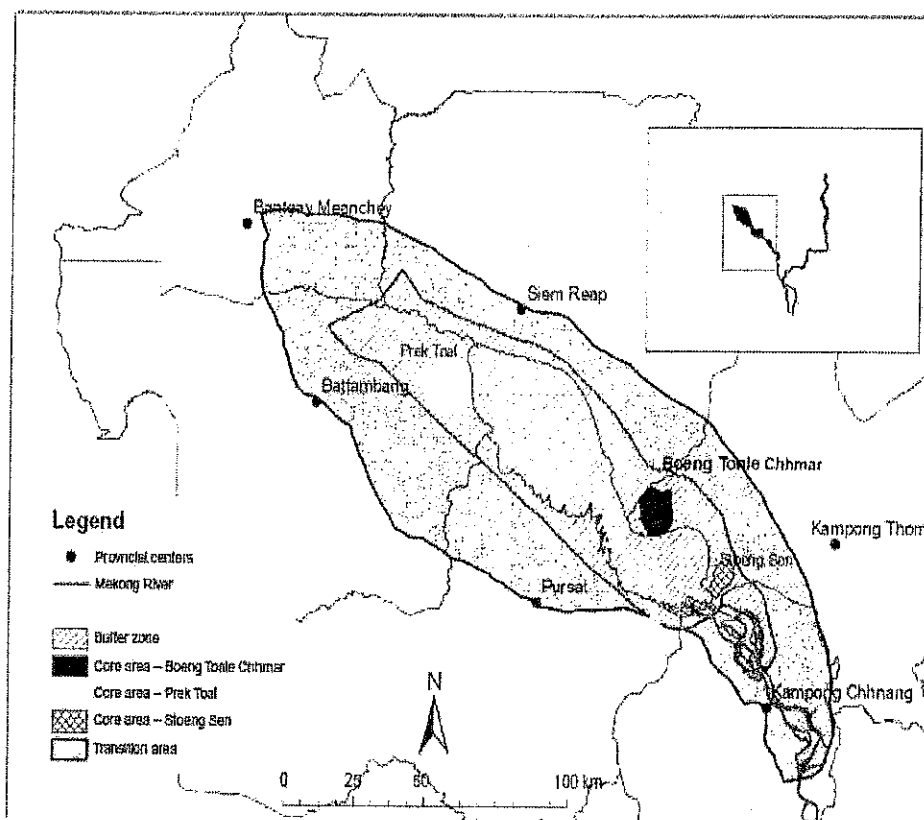


Figure 8: Map of Tonle Sap Biosphere Reserve

(Source: Sophat Seak, 2012)

4. Wildlife and Endangered Species

70. As lands are mostly converted into residential uses and agricultural field, wildlife and endangered species, in particular, were not observed in the project area. Terrestrial ecosystem in the study area has low biodiversity. Some cows and buffaloes can be seen around the location. According to local community reported that there are still some reptiles and amphibians as well as birds found within the project areas, see Table 4 and 5.

Table 4: Reptiles and amphibians in the project areas

No.	Local Name	Name in English	Science name
1	Kangkeb	Tiger Frog	Hoplobatrachus tigerinus
2	Kingkouk		
3	Kanchanchek		
4	Thlain		
5	Bangkuoy Slab		
6	Bangkuoy Snaeng		
7	Bangkuoy Thamda		
8	Kantrong		
9	Trakuort	Common Monitor	Varanus bengalensis
10	Puos Thlan	Burmese Python	Python molurus bivittatus
11	Puos Prey	Common Rat Snake	Ptyas mucosus
12	Puos Vek (Roneam)	King Cobra	Ophiophagus hannah
13	Puos Vek (krabel)	Monocle Cobra	Naja kaouthia
14	Puos Vek (Sra nge)	Indochinese Spitting Cobra	Naja siamensis
15	Puos Khiev		

Source: Obtained from local people during field survey in September 2014

Table 5: Birds in the project areas

No.	Local Name	Science name	Name in English
1	Porpich	Pycnonotus atriceps	Bulbul
4	Pvaeng	Aceros undulatus	Wreathed Hornbill
5	Chab Daun Ta	Acrocephalus orientalis	Oriental Reed Warbler
6	Chab Krok	Megalurus palustris	Striated Grassbird
7	Chab Tet	Orthotomus sutorius	Common Tailorbird
8	Chab Dankov Chincheum Sor	Prinia inornata	Plain Prinia
9	Chab Phtas	Passer montanus	Eurasian Tree Sparrow
10	Chab Srok	Passer flaveolus	Plain-backed Sparrow
12	Ka ek	Corvus macrorhynchos	Large-billed Crow

13	Meam Tauch Prey	<i>Glaucidium cuculoides</i>	Asian Barred Owlet
14	Kleng Kmao	<i>Vilvus migrans</i>	Black kite
15	Kleng Srak	<i>Tyto alba</i>	Barn Owl
16	Lor Lok Phnom	<i>Macropygia unchall</i>	Barred Cuckoo Dove
17	Lor lok Traeng	<i>Streptopelia tranquebarica</i>	Red Collared Dove
18	Trases Thom Pus Sor	<i>Dryocopus javensis</i>	White-bellied Woodpecker
19	Ta vac	<i>Eudynamys scolopacea</i>	Asian Koel
20	Teav Kiev	<i>Coracias benghalensis</i>	Indian Roller
21	Ti tuy Thom	<i>Bubo nipalensis</i>	Spot-bellied Eagle Owl

Source: Obtained from local people during field survey in September 2014

5. Aquatic Resources

71. According to the statistical Yearbook 2011, by National Institute of Statistics, Ministry of Planning indicated that in Cambodia the total inland fisheries production there were 405.0 thousand tons in 2010, compared to 390.0 tons in 2009. The fish caught by community fishermen and inundated rice field fishing increased 4.35 percent from 115.0 thousand tons in 2009 to 120 thousand tons in 2010.

72. Cambodian people in rural areas rely heavily on fisheries for their subsistence. Fish provide from 40- 60% of animal protein intake for people in rural areas – even those living far from water. An average of 76 kg of fish is consumed per person/year. The value of the river fish capture is estimated at about USD 0.68 per kilogram, while the value of aquaculture is approximately USD 1.05 per kilogram (Source: Baran 2005).

73.. Fisheries provide a possibility for income generation with very little capital investment and no land needed. In Cambodia as a whole 1995-96, 39% of households were involved in fishing and 77% of them were involved in farming as production and income-generating activities. More than 50% of the fishing households indicate that their supply of fish comes mainly from family fishing in rivers, lakes and in flooded rice fields. 10.5% of the households have fishing or a fishing related activity as the primary occupation while another 34.1% are engaged on a part-time basis. There are more than 100 fish species in Mekong River, see Table 6.

Table 6: Fish commonly found in the Mekong River and floodplain areas

No.	Local name	Science name	English name
1	Trey Riel	<i>Henicorhynchis</i> spp.	
2	Trey Pro Ma	<i>Boesemanina microlepis</i>	Small scale ardherfish
3	Trey Kantrop	<i>Pristolepis fasciata</i>	Catopra
4	Trey Linh	<i>Thynnichthys thynnoides</i>	Whit lady carp
5	Sloek Russey	<i>Paralaubuca typus</i>	

6	Trey Kanhchos Kdong	Heterobagrus bocourti	
7	Trey Kanhchos Chhot	Mystus micracanthus	
8	Trey Kanhchos Para	Lelocassis siamensis	
9	Trey Kanhchos Pruy1	Mystus micracanthus	
10	Trey Kanhchos Pruy2	Mystus micracanthus	
11	Trey Ros/Phtuok	Channa striata	Chevron snakehead
12	Trey Kes	Micronema apogon	Common sheatfish
13	Trey Kes	Micronema micronema	Common sheatfish
14	Trey Kaek	Morulus kryophekadion	Black sharkminnow
15	Trey Chhkoc Moul	Cyclocheilichthis enoplos	Soldier river barb
16	Trey Chhkoc Kdar	Albulichthys albuloides	
17	Trey Sraka kdam	Cyclocheilichthis lagled	
18	Trey Chrakeng	Puntioplites waandersi	
19	Trey Pruol/kraland	Cirrhinus microlepis	Small scale mud carp
20	Trey Krom	Osteochilus melanopleura	
21	Trey Chhdor/Diep	Channa micropeltes	Giant snake head
22	Trey Ta aun	Ompok hypophthalmus	Whisker sheatfish
23	Trey Chhpin	Hypsibarbus lagleri	Tawes
24	Trey Chhpin	Hypsibarbus malcolmi	Tawes
25	Trey Slat	Notopterus notopterus	Bronze featherback
26	Trey Po	Botia spp.	Speckletail botia
27	Trey Kanhchrouk Krohorm	Botia eos	Spotted gouranli
28	Trey Kanhchrouk Chhot	Botia helodes	Spotted gouranli
29	Trey Kanhchrouk Loeung	Botia lecontei	Spotted gouranli
30	Trey Kanhchrouk	Botia morleti	Spotted gouranli
31	Trey Kamphleanh	Mystus nemurus	
32	Trey Chhlang	Rasbora torneieri	
33	Trey Changva moul	Rasbora borapetensis	
34	Trey Changva Chhot	Rasbora daniconius	
35	Trey Changva	Rasbora myersi	
36	Trey Kros	Wallago attu	
37	Trey Sanday	Pangasius lamaudi	
38	Trey Phtong	Xenentodon spp.	
39	Trey Angkat Prak	Pnuntia brevis	
40	Trey Pra	Pangasius spp.	Catfish
41	Trey Pra Kandol	Pangasius bocourti	
42	Trey Prawloug	Leptobarbus hoeveni	Hoeven's slender carp
43	Trey Khman	Hampala macrolepidota	

44	Trey Bandal Ampouv	Clupeoides borneensis	
45	Trey Kahae	Barbodes altus	
46	Trey Kranh	Belodontichthys dinema	
47	Trey Klanghay	Trichogaster pectoralis	Snakeskin gourami
48	Trey Kanthor	Anabas testudineus	Chmbing perch
49	Trey Kambot Chromioa	Sikukia gudgeri	
50	Trey Ampil Toum	Systemus orphoides	
51	Trey Chanteas Phloulk	Parachela siamensis	
52	Trey Chveat	Pangasius siamensis	
53	Trey Chveat	Pangasius pleurotaenia	
54	Trey Chveat	Pangasius polyuranodon	
55	Trey Kampoul Bay	Cosmochilus harmandi	
56	Trey Damrey	Oxyeleotris marmorata	Sand goby
57	Trey Trawsawk	Probarbus jullieni	Seven-line barb
58	Trey Kol Raing	Catlocarpio siamensis	Giant Mekong barb
59	Trey Reach	Pangasianodon gigas	Giant Mekong catfish
60	Trey Prawma	Boesemania microlepis	Smallscale croaker
61	Trey Chunluonh Moan	Coilia macrognathos	Longjaw grenadier anchovy
62	Trey Chhma	Setipinna melanochir	Dusky hairfin anchovy
63	Trey Dang khteng	Macrochirichthys macrochirus	
64	Trey Chhkak Tituy	Albulichthys albuloides	
65	Trey Phka kor	Cyclocheilichthys armatus	
66	Trey Lokok Saw	Parapuntius deauratus	
67	Trey Changva Ronong	Lobocheilos melanotaenia	
68	Trey Kamphilev	Kryptopterus cryptopterus	Frecklefin eel
69	Trey Khchung	Macrognathus maculatus	Fringed threadfin
70	Trey Kompream	Polynemus multifilis	Small scale archerfish
71	Trey Kancheak sla	Toxotes microlepis	Golden tank goby
72	Trey Khsan	Glossogobius aureus	Mekong blind sole
73	Trey Andat Chhkae	Typhlachirus elongatus	
74	Trey Kampot	Monotetra cambodgiensis	Iridescent glassy perchlet
75	Trey Kanchanh Chras	Parambassis apogonoides	Duskyfin glassy
76	Trey Kantrang Preng	Parambassis wolffi	Laotian shad
77	Trey Kbok	Tenuulosa thibaudeaui	
78	Trey Changwa chunh chuak	Crossocheilus reticulatus	
79	Trey Po Khmao Tracheak	Pangasius larnaudi	
80	Trey Po Pruy	Pangasius larnaudiei	

81	Trey Chhviet	<i>Pangasius macomernus</i>	
82	Trey Ke	<i>Pangasius nasutus</i>	
83	Trey Po Pruy	<i>Pangasius sanitwongeti</i>	
84	Trey Khlang Hay	<i>Belodontichthys dinema</i>	
85	Trey Kror Paot/San day	<i>Wallago attu</i>	
86	Trey Chay Krar Peu	<i>Microphis boaja</i>	
87	Trey Phtaung	<i>Hemiramphus mooguardianus</i>	
88	Trey Priem	<i>Polynemus longipectoralis</i>	
89	Trey Spong	<i>Lates calcarifer</i>	
90	Trey Kantrang Preng	<i>Ambassis wolffi</i>	
91	Trey Kanchanh Chras	<i>Ambassis ranga</i>	
92	Trey Pama	<i>Pseudosciaena soldado</i>	
93	Trey Kanhcheak Sla	<i>Toxotes chatareus</i>	
94	Trey Sbaica	<i>Cymbium cambodgiense</i>	
95	Trey Andat Chhker	<i>Cynoglossus microlepis</i>	
96	Trey Pa phak	<i>Scaphognathops bandanensis</i>	
97	Trey Kap	<i>Thryssocypels tonlesapensis</i>	
98	Trey Kantuy Krohorm	<i>Discherodontus ashmeadi</i>	Redtail barb
99	Trey Khman	<i>Hampala macrolepidota</i>	
100	Trey Saka Keo	<i>Rainmas guttatus</i>	Barilius Guttatus
101	Trey Khla	<i>Systemus partipentazona</i>	Puntus tetrazona
102	Trey Kknang Veng	<i>Dangila sp. cf. auvieri</i>	
103	Trey Khnang Veng	<i>Dangila lineata</i>	
104	Trey Dang Dav	<i>Luciosoma bleekeri</i>	
105	Trey Borbel		
106	Trey Kaok	<i>Arius storni</i>	Sona sea catfish
107	Trey Kaok	<i>Arius thalassinus</i>	Giant sea catfish
108	Trey Kyar	<i>Mystus wyckioides</i>	
109	Trey Tanel	<i>Mystus ilamentus</i>	
110	Trey Andeng Tun	<i>Clarias macrocephalus</i>	Broad head catfish
111	Trey Andeng Reong	<i>Clarias batrachus</i>	Walking catfish
112	Angtung	<i>Monopterus albus</i>	Swamp ell
113	Trey Russei Chek	<i>Acantopsis sp. 1</i>	
114	Trey Russei Chek	<i>Acantopsis sp. 2</i>	
115	Trey Russei Chek	<i>Acantopsis sp. 3</i>	
116	Trey Trosak	<i>Probarbus jullieni</i>	
117	Trey Trosak Sor	<i>Probarbus labeamajor</i>	

118	Trey Arch Kok	Dangila lineata	
119	Trey Pkhar Char	Cirrhinus jullieni	Osteochilus simus

Source: Fisheries and aquaculture development and environment impact review 2011

C. Socio-Economic Conditions

1. Population

74. Cambodia is located in Southeast Asia and have border with three country Vietnam, Lao and Thailand. The total territory area is 181,035 km² and has total population of 13,388,910 persons within 6,893,398 women (census 2008). The average size of household is 4.7 and the annual population growth rate is 1.54%.

75. The total population in Banteay Meanchey is 678,033 persons (census 2008) that growth fast if compared to the total population in year 1998, has 577,772 persons (census 1998). At the present, the population density is 102 persons per km². The average family member is 4.6 persons and annual population increasing rate is 1.57 percent.

2. Poverty

76. In Cambodia, the population living under the national poverty line of US\$0.93 per capita per day in 2009 (Ministry of Planning, 2013) is defined as the poor, about 22.9% of Cambodians live below the national poverty line indicating that at least one in five Cambodians are still living in deprivation. They lack sufficient resources to meet their daily needs. Cambodia's long history of violence and conflict, both internally and externally has contributed to the current poverty situation. Most notably in Cambodia's troubled history was the Khmer Rouge regime and a period of occupation under Vietnam's communist leaders from 1980 to 1989. As such, it was not until recently did the political situation in Cambodia settled down. Since then, its economy has been growing from strength to strength, driven by the expansion in the garment, construction, tourism and agricultural sector.

3. Employment

77. The economic and social development in a country depends on the number of persons who are economically active.

78. The census (2008) shows that the total population in 2008 was 13,395,682 persons of which 6,935,246 persons were employed, and 118,152 persons unemployed. By comparison, the numbers of un-employment in the country decreased from 273,183 persons in 1998 to 118,152 in 2008 (Table 7).

Table 7: Status of employment

Status of employment	1998	2008
	Persons	Persons
Total population in Cambodia	11,437,656	13,395,682
Employment	4,845,762	6,935,246
Unemployment	273,183	118,152

Status of employment	1998	2008
	Persons	Persons
Urban Population	2,095,074	1,299,677
Employment	781,998	1,233,174
Unemployment	95,235	58,337
Rural Population	9,342,582	12,096,005
Employment	4,083,764	5,702,072
Unemployment	177,948	59,815

Source: Population census (2008)

4. Land Use and Facilities

79. Land use in the vicinity of the PR 156D is mixed of residents, small-scale business shops, electrical/motorcycle repairing shops and agricultural fields in both side of the project area. There also have schools, health care centers, religious building (i.e. pagodas) and commune/village administrative buildings located adjacent to the project area. Photos of land use and facilities are enclosed in Appendix 3.

5. Cultural and Archeological Sites

80. Based on field observation, there was no pagoda or archaeological sites affected by the project implementation. However, there were found the religious building like pagodas along the project area of PR No. 156D.

VI. ANTICIPATED ENVIRONMENTAL IMPACTS AND MITIGATION MEASURES

A. Environmental Assessment Methodology

81. The Initial Environmental Examination (IEE) provides an analysis of possible impacts associated with the reconstruction the proposed of road. This IEE was undertaken using mostly secondary data, the review of previous reports, reference to the EARF, and implementation of short fieldwork missions. The objective was to assess the potential negative impacts of the subprojects on the physical, biological and socio-economic environment, and to identify measures to mitigate or avoid any expected adverse impacts.

82. The analysis of potential impacts has been undertaken for four (4) key aspects: (i) project location, (ii) design, (iii) construction, and (iv) operation. The potential impacts are classified by degree of significance, which are defined as follows:

- Not significant (D1): No impact from the project activity
- Small impact (D2) - low probability of occurrence and low magnitude of any impact occurring on the environment.

- Moderate impact (D3) – Moderate probability of occurrence and moderate magnitude of any impact occurring on the environment.
- Major impact (D4) – high probability of occurrence and high magnitude of any impact occurring on the environment.
- (+) = beneficial impact

83. The impacts are also assessed according to duration as follows:

- Short term = less than 1 year,
- Medium term = 1 to 5 years,
- Long term = More than 5 year.

B. Screening of environmental impacts

84. TA preliminary screening of potential environmental impacts from the project is undertaken for each of the three following stages:

- Pre-construction: Occurs during project design and during completion of detailed design and land acquisition.
- Construction: Occurs during project construction, including vegetation clearing, earthworks, and bridge construction.
- Operation: Occurs after completion of bridge construction.

85. The list of potential impacts identified for the Project is presented in Table 8. The project work involves road reconstruction. However, no major impacts are expected. The majority of impacts occur only during project construction. The planned and corresponding mitigation measures are presented in the same Table.

Table 8: Environmental management plan (EMP)

Project Phase	Project Activity	Potential Environmental Impacts	Proposed Mitigation Measures	Institutional Responsibilities	
				Implement	Supervise
1. Pre-Construction	Detailed Engineering Design	1. Loss of trees (during site clearing and quarrying of construction materials)	<ul style="list-style-type: none"> On the design stage, ensure that there are acceptable alternative borrow pit areas that would have an overall beneficial advantage in terms of improved livelihood and reduced environmental impact. 	DDIS Consultant, IAVEA, in cooperation with contractor	DDIS Consultant, IAVEA
		2. Damage to existing structures	<ul style="list-style-type: none"> The design should maximize benefits or avoid impacts on assets. Resettlement framework for the Project and Cambodian laws, policies, and regulations should be complied with. 	DDIS Consultant, IAVEA	DDIS Consultant, IAVEA
		3. Risk of land mine or UXO	<ul style="list-style-type: none"> Consultative meetings with local communities are necessary to know clearly where there are risks of mines or UXO. Unsafe areas should be cleared before project implementation. 	DDIS Consultant, IAVEA	DDIS Consultant, IAVEA
2. Construction	Earthworks, site clearing, hauling of construction materials, piling	4. Dust generation	<ul style="list-style-type: none"> The Contractor will be required to formulate and implement a Dust Abatement Program that includes spraying of water on roads and 	Contractor	DDIS Consultant, IAVEA

IEE-CW10b

26/11/2014

Project Phase	Project Activity	Potential Environmental Impacts	Proposed Mitigation Measures	Institutional Responsibilities	
				Implement	Supervise
	works, Operation of construction/ workers' camps, borrow operation, hauling of construction wastes to spoil sites		<p>work areas within villages close to the road.</p> <ul style="list-style-type: none"> Vehicles transporting materials should be covered with tarpaulin or similar material 		
		5. Noise and vibration	<ul style="list-style-type: none"> The Contractor should consider proper scheduling of construction activities particularly in sensitive areas. Acoustic barriers or enclosures for working areas should be provided. 	Contractor	DDIS Consultant, IA/EA
		6. Water contamination/ quality	<ul style="list-style-type: none"> Waste/used oil should be collected, properly stored and disposed to an approved site (according to national standard). Storage should be in drums raised off the ground and properly covered to keep rain water out. Lining or pan should be provided to contain any spills and simplify clean up. The Contractor shall prepare a Spill Management Plan (including measures to be taken and 	Contractor	DDIS Consultant, IA/EA

Project Phase	Project Activity	Potential Environmental Impacts	Proposed Mitigation Measures	Institutional Responsibilities	
				Implement	Supervise
			<p>equipment to be used) to ensure adequate cleanup of any spills.</p> <ul style="list-style-type: none"> Avoid discharging of petrol, or lubricants into stream, reservoir or land. Construction shall be worked during the dry season. 		
		7. Water-borne disease	<ul style="list-style-type: none"> Fill-up depressed areas to prevent water ponding which may be used as breeding ground for disease-carrying organisms mosquitoes Borrow pits may be converted to aquaculture or be developed as water reservoir for community use if agreed during consultation. 	Contractor	DDIS Consultant, IAVEA
		8. Water flow	<ul style="list-style-type: none"> Do not water blockage Provide adequate cross drainage Construction of divert water flow 	Contractor	DDIS Consultant, IAVEA
		9. Loss of agricultural land for borrow pits	<ul style="list-style-type: none"> The contractor will use only licensed borrow operators. There 	Contractor	DDIS Consultant,

IEE-CW10b

26/11/2014

Project Phase	Project Activity	Potential Environmental Impacts	Proposed Mitigation Measures	Institutional Responsibilities	
				Implement	Supervise
			<p>will be no side borrow permitted, unless agreed to with roadside residents.</p> <ul style="list-style-type: none"> The contractor will be responsible for rehabilitating any borrow sites opened and operated by them 		IA/EA
		10. Loss of trees	<ul style="list-style-type: none"> Tree clearing should be avoided as much as possible; The borrow pits will need to be re-vegetated before being handed back to the owner, or could be used for aquaculture. Tree planting should be carried out in the appropriate location of the road. Coordinate with MoE regarding the species of trees to be used. 	Contractor	DDIS Consultant, IA/EA
		11. Soil erosion	<ul style="list-style-type: none"> The contractor will be required to employ appropriate construction methodology, consider appropriate timing or season, implement soil erosion control to minimize soil erosion and sedimentation of 	Contractor	DDIS Consultant, IA/EA

Project Phase	Project Activity	Potential Environmental Impacts	Proposed Mitigation Measures	Institutional Responsibilities	
				Implement	Supervise
			waterways. The alternative approaches should be: (1) provide adequate cross drainage to avoid over flow or flooding and (2) re-vegetation of erosion-prone areas		
		12. Generation of wastes	<p>Contractor should formulate and implement a Waste Management Plan. This should include :</p> <ul style="list-style-type: none"> • implement waste segregation (recyclables/biodegradable/residual wastes) • designate an appropriate location as temporary staging area for excavated materials and other waste • provide sufficient garbage containers in the construction camps and at work site • regular disposal of wastes to an approved landfill or site should be implemented • provide sanitary facilities for workers; this should be cleaned and maintained regularly 	Contractor	DDIS Consultant, IAEA

Project Phase	Project Activity	Potential Environmental Impacts	Proposed Mitigation Measures	Institutional Responsibilities	
				Implement	Supervise
			<ul style="list-style-type: none"> Upon completion of construction works, camps and work sites used should be restored to its original or better condition. 		
		13. Traffic congestion, Safety and Health	<p>The contractor should formulate Traffic Management Plan and health and safety plan. This should include the following:</p> <p>Safety</p> <ul style="list-style-type: none"> Install traffic/warning signs like "safety first" at the construction area including fences or enclosures Keep the roadway or bypass accessible to commuters to avoid traffic jam Park at designated area. Detour road should be provided and accessible to commuters Temporary access of equipment and trucks must be established and approved by the sub-district officials Workers should be provided with 	Contractor	DDIS Consultant, IAVEA

Project Phase	Project Activity	Potential Environmental Impacts	Proposed Mitigation Measures	Institutional Responsibilities	
				Implement	Supervise
			Personal Protective Equipment Health <ul style="list-style-type: none"> A trained first aid personnel and health facility should be provided on site. Potable water and sanitary facilities should be provided to workers and in camp site. To prevent the transmission of HIV/AIDS, the contractor should incorporate on the health and safety plan the education of workers about sexually transmitted disease. 		
		14. Generation of employment	<ul style="list-style-type: none"> The contractor should comply with the Labor and Gender Action Plan ; employ people from villages including women and unskilled workers 	Contractor	IA/EA , local authorities
3.Operation Phase	Use of bypass and the bridge	15. Traffic accident	<ul style="list-style-type: none"> Provide traffic signs 	IA/EA	IA/EA, local authorities

86. Such impacts are briefly discussed below:

1. Environmental impacts related to project design

a) Loss of trees

87. Although the project will only involve improvement of the existing road, there are still indirect potential impacts on trees and natural forest depending on the location of borrow pits to be used as source of earthwork.

88. Ensure that there are acceptable alternative borrow pit areas that would have an overall beneficial advantage in terms of improved livelihood and reduced environmental impact.

b) Damage to existing structures

89. As observed, small stalls and trees will be damaged by the project. To lessen the project impacts, the road and temporary access were designed in such a way that trees and adjacent structures will not be affected. Resettlement framework for the Project and Cambodian laws, policies, and regulations should be complied with.

c) Risk of Land Mine and UXO

90. The new road will be constructed in the same location, however, the risks remain since there may be deep seated mines that could be exploded by heavy construction equipment.

91. Consultative meetings with local communities are necessary to know clearly where there are risks of mines or UXO. Unsafe areas should be cleared before project implementation.

2. Environmental issues related to project construction

a) Dust Impacts (D3)

92. Generation of dust is expected during earthworks and from hauling of construction materials to site. Dust pollution could be a nuisance to communities who live adjacent to the site, especially during dry season. The dust will also affect aesthetics.

93. The Contractor will be required to formulate and implement a dust control program that includes spraying of water on roads and work areas within villages close to the road. Vehicles transporting materials should be covered with tarpaulin or similar material.

b) Noise Impacts (D2)

94. Similar to dust, operation of construction equipment and transporting materials will cause temporary noise and vibration. Communities close to work areas will be affected.

95. The Contractor should consider proper scheduling of construction activities particularly in sensitive areas. Acoustic barriers or enclosures for working areas should be provided where required.

c) Generation of wastes (D2)

96. During subproject construction, various wastes will be generated. Potential sources are wastes from construction workers, site clearing, excavation, dismantling of old structures and from other construction-related activities. If not properly managed, it will be effected the health and sanitation in the subproject area. Garbage dump area will serve as breeding ground for disease-carrying species. Waste may even clog the drainage system.

97. Contractor should formulate and implement a Waste Management Plan where required as a results of construction and camp activities. This should include: employ waste segregation (recyclables/biodegradable/residual wastes), designate an appropriate location as temporary staging area for excavated materials and other waste, provide sufficient garbage containers in the construction camps and at work site, regular disposal of wastes to an approved landfill or site should be implemented, provide sanitary facilities for workers which should be cleaned and maintained regularly. Upon completion of construction works, camps and work sites used should be restored to its original or better condition.

d) Water contamination (D2)

98. The most severe water quality impact would be from bitumen, diesel fuel or used oil. These substances are toxic to living organisms as well as water quality in the project area.

99. Contractor has to ensure that: (i) Diesel and waste oil are to be handled and stored properly to prevent leakage or spill. (ii) Waste oil is to be collected, stored and disposed to an approved site (according to national standard). (iii) Storage is to be in drums, raised off the ground, covered to keep rain out and surrounded by a bund to contain any spills and simplify clean up. (iv) The Contractor shall prepare a Spill Management Plan (including measures to be taken and equipment to be used) to ensure adequate cleanup of any spills.

e) Water-borne disease (D1)

100. Borrow pits may hold water and can serve as breeding grounds for mosquitoes causing dengue fever.

101. Contractor must ensure that (i) solid wastes are regularly disposed into safe landfill. (ii) Sitting camps distant to community's where appropriate and removal of stagnant water areas, and (iii) borrow pits may be utilized for aquaculture or be developed as water storage for community use.

f) Water flow (D3)

102. Water blockage for road construction will effect to water flow. Moreover, it will impacts for local villagers who are living at the downstream which needs water for their irrigation and daily use.

103. Contractor has to ensure that road construction will not be affected to water flow. The alternative approaches should be: (i) do not blockage, (ii) provide adequate cross drainage of water flow and (iii) construct divert of water flow.

g) Soil erosion (D3)

104. Soil erosion usually occurs during site clearing, embankment works and other earth moving works. When heavy rain comes, sediments are carried into ditches, culverts, nearby water bodies and adjacent lands.

105. The contractor will be required to implement soil erosion control to minimize soil erosion and sedimentation of waterways. The alternative approaches should be: (1) provide adequate cross drainage to avoid over flow or flooding and (2) re-vegetation of erosion-prone areas.

h) Loss of trees (D1)

106. The project will only improve the existing roads, bridges and drainage structures. Impact on trees is insignificant.

107. The borrow pits will need to be re-vegetated before being handed back to the owner, or may be used for aquaculture.

108. Tree clearing should be avoided as much as possible and tree planting carried out where appropriate in order to enhance the environment around the road.

i) Loss of agricultural land for borrow pits (D1)

109. Quarrying filling materials from the rice fields will reduce areas used for rice production. It is expected that the volume of rice that can be planted and be harvested will decrease.

110. The contractor will use only licensed borrow operators and borrow areas. There will be no side borrow permitted, unless agreed to with roadside residents.

111. The contractor will be responsible for rehabilitating any borrow sites opened and operated by them.

j) Traffic congestion, Safety and Health (D2)

112. Traffic congestion normally occurs during construction of roads, bridges and drainage structures on major thoroughfares. Accidents inevitably happen also during construction. Some motorists drive at high speed and without lights at night time, construction equipment not properly park, construction wastes piled along roads and no warning signs on deep excavations.

113. The contractor should formulate Traffic Management Plan. This should include the following: (i) Install traffic/warning signs like "safety first" at the construction area including fences or enclosures (ii) orient drivers to drive at low speeds, especially in market, school, hospital, urban areas. (iii) keep the roadway or bypass accessible to commuters to avoid traffic jam (iv) park at designated area (v) Detour road should be provided and accessible to commuters (vi) Temporary access of equipment and trucks must be established and approved by the sub-district officials.

114. A trained first aid personnel and health facility should be provided on site. Potable water and sanitary facilities should be provided to workers.

115. To prevent the transmission of HIV/AIDS, the contractor should incorporate on the health and safety plan the education of workers about sexually transmitted disease. These plans shall be provided to the client and client's consultant at the early stages of the project.

3. Environmental issues related to project operation

a) Traffic accident (D2)

116. As a result of the reconstruction road, it will be possible for vehicle to increase its speed from an average of about 30 kph to possibly 100+ kph. This will consequently increase road accidents.

117. Below some measures to improve safety drive including:

- (i) Provide traffic signs on accident-prone points
- (ii) Public awareness and information campaign on traffic signs to educate communities on traffic.
- (iii) Roads and bridges should be regularly inspected and be maintained regularly.

4. Potential positive environmental and social impacts by the project

a) During project construction:

118. **Livelihood/income:** Increasing opportunities for local people to be employed as construction works. The construction contractor will be encouraged to maximize the employment of local people in the construction works. However, contractor should also provide enough training on safety work to them before starting works.

b) During project operation:

119. **Easier Transport at Reduced Costs (+D3):** The use of the new road will reduce travel time and transport costs. It will improve access to services, especially access to medical facilities, student go to school and other purposes.

120. **Livelihood/income (+D3):** The improvement of the road will reduce cost for traveling and transporting of local products to markets.

121. **Improved public access (+D3):** The improved road will provide benefits by improving road access to services by local communities, especially access to hospital, government and private services.

Table 9: Environmental monitoring plan (EMoP)

Issue	Mitigation Measures (Items to Monitor)	Monitoring Required/Methods/Parameters	Schedule / Frequency	Start/ Completion Date	Reporting	Responsibility
Pre-Construction Phase						
Loss of trees	<ul style="list-style-type: none"> Ensure that there are acceptable alternative borrow pit areas that would have an overall beneficial advantage in terms of improved livelihood and reduced environmental impact. 	Confirmed by MPWT-IA via note to file	Once during contract preparation	Before start of construction stage / Before end of design stage	Note to file regarding action(s) by MPWT-IA	DDIS Consultant, EA, IA
Damage to existing structures	<ul style="list-style-type: none"> The design should maximize benefits or avoid impacts on assets. Resettlement framework for the Project and Cambodian laws, policies, and regulations should be complied with. 	Confirmed by MPWT-IA via note to file	Once during Contract preparation	Before start of Construction stage / Before end of design stage	Note to File regarding action(s) by MPWT-IA	DDIS Consultant, EA, IA
Possible accident due to risk of Land mine or UXO	<ul style="list-style-type: none"> Consultative meetings with local communities are necessary to know clearly where there are risks of mines or UXO. Unsafe areas should be cleared before project implementation. 	Verify Information from local communities	Before the mobilization of contractor	Before the mobilization of contractor	Information from local communities	DDIS Consultant, EA, IA

Issue	Mitigation Measures (Items to Monitor)	Monitoring Required/Methods/Parameters	Schedule / Frequency	Start/ Completion Date	Reporting	Responsibility
Construction Phase						
Dust generation	<ul style="list-style-type: none"> The Contractor will be required to formulate and implement a Dust Abatement Program that includes spraying of water on roads and work areas within villages close to the road. Vehicles transporting materials should be covered with tarpaulin or similar material 	<p>Check copy of the Dust Abatement Plan</p> <p>Check level of dust pollution by:</p> <ul style="list-style-type: none"> -Aesthetics through visual observation -Feedback from village people 	Monthly	Start of Construction stage/Construction on stage	Proof that copies of the IEE/EMP are received by the contractor; Compliance monitoring reports	DDIS Consultant, EA, IA, Contractor's Safeguard Specialist (self monitoring)
Noise and vibration	<ul style="list-style-type: none"> The Contractor should consider proper scheduling of construction activities particularly on sensitive areas. Acoustic barriers or enclosures for working areas should be provided. 	Feedback from village people about noise concern	Monthly	Construction stage	Compliance monitoring reports	DDIS Consultant, EA, IA, Contractor's Safeguard Specialist (self monitoring)
Generation of wastes	<p>Contractor should formulate and implement a Waste Management Plan. This should include:</p> <ul style="list-style-type: none"> employ waste segregation (recyclables/biodegradable/re 	Check aesthetics through visual observation	Monthly	Construction stage	Compliance monitoring reports	DDIS Consultant, EA, IA, Contractor's Safeguard Specialist (self monitoring)

Issue	Mitigation Measures (Items to Monitor)	Monitoring Required/Methods/Parameters	Schedule / Frequency	Start/ Completion Date	Reporting	Responsibility
	<p>sidual wastes)</p> <ul style="list-style-type: none"> designate an appropriate location as temporary staging area for excavated materials and other waste provide sufficient garbage containers in the construction camps and at work site regular disposal of wastes to an approved landfill or site should be implemented provide sanitary facilities for workers; this should be cleaned and maintained regularly Upon completion of construction works, camps and work sites used should be restored to its original or better condition. 					
Water contamination	<ul style="list-style-type: none"> Waste/used oil should be collected, properly stored and disposed to an approved site 	Check copy of Spill Management Plan; records of waste/used oil	Monthly	Construction stage	Compliance monitoring reports	DDIS Consultant, EA, IA, Contractor's Safeguard

IEE-CW106

26/11/2014

Issue	Mitigation Measures (Items to Monitor)	Monitoring Required/Methods/Parameters	Schedule / Frequency	Start/ Completion Date	Reporting	Responsibility
	<p>(according to national standard). Storage should be in drums raised off the ground and properly covered to keep rain water out. Lining or pan should be provided to contain any spills and simplify clean up.</p> <ul style="list-style-type: none"> The Contractor shall prepare a Spill Management Plan (including measures to be taken and equipment to be used) to ensure adequate cleanup of any spills. 	<p>generated/ collected by licensed transporter-treater</p> <p>Visual inspection of waste/used oil in the storage area.</p> <p>Check of color of surface water traversed by the project through visual inspection.</p>				Specialist (self monitoring)
Water-borne disease	<ul style="list-style-type: none"> Contractor must ensure that (i) solid wastes are regularly disposed into safe landfill Locate camps distant to communities Fill-up depressed areas to prevent water ponding which may be used as breeding ground for disease-carrying organisms mosquitoes Borrow pits may be utilized for aquaculture or be developed 	<p>Visual observation – stagnant water/water ponding due to construction.</p>	Monthly	Construction stage	Compliance monitoring reports	DDIS Consultant, EA, IA, Contractor's Safeguard Specialist (self monitoring)

Issue	Mitigation Measures (Items to Monitor)	Monitoring Required/Methods/Parameters	Schedule / Frequency	Start/ Completion Date	Reporting	Responsibility
	as water reservoir for community use.					
Water flow	<ul style="list-style-type: none"> Do not water blockage Provide adequate cross drainage Install temporary divert of water flow 	Visual observation – stagnant water flow	Monthly	Construction stage	Compliance monitoring reports	DDIS Consultant, EA, IA, Contractor's Safeguard Specialist (self monitoring)
Loss of agricultural land for borrow pits	<ul style="list-style-type: none"> The contractor will use only licensed borrow operators. There will be no side borrow permitted, unless agreed to with roadside residents. The contractor will be responsible for rehabilitating any borrow sites opened and operated by them 	Check records on borrow sites; license of borrow pit operators; rehabilitation done; status of borrow sites used	Monthly	Construction stage	Compliance monitoring reports	DDIS Consultant, EA, IA, Contractor's Safeguard Specialist (self monitoring)
Loss of trees	<ul style="list-style-type: none"> Tree clearing should be avoided as much as possible; The borrow pits will need to be re-vegetated before being handed back to the owner, or may be used for aquaculture. 	Visual observation, records of trees affected; Check tree planting plan	Monthly	Construction stage	Compliance monitoring reports	DDIS Consultant, EA, IA, Contractor's Safeguard Specialist (self monitoring)

Issue	Mitigation Measures (Items to Monitor)	Monitoring Required/Methods/Parameters	Schedule / Frequency	Start/ Completion Date	Reporting	Responsibility
	<ul style="list-style-type: none"> Tree planting should be carried out in the appropriate location of the road. Coordinate with MoE regarding the species of trees to be used. 					
Soil erosion	<ul style="list-style-type: none"> The contractor will be required to implement soil erosion control to minimize soil erosion and sedimentation of waterways. The alternative approaches should be: (1) provide adequate cross drainage to avoid over flow or flooding and (2) re-vegetation of erosion-prone areas 	<p>Visual observation of possible eroded segments.</p> <p>Visual observation on the possible change of color of surface water traversed by the project.</p>	Monthly	Construction stage	Compliance monitoring reports	DDIS Consultant, EA, IA, Contractor's Safeguard Specialist (self monitoring)
Traffic congestion, Safety and Health	<p>The Contractor should formulate and implement a Traffic Management Plan and Health and Safety Plan for the health and safety of the public and the workers as well.</p> <p>The plans should include the following:</p> <ul style="list-style-type: none"> Install traffic/warning signs like "safety first" at the 	<p>Check copy of the Traffic Management Plan; Health and Safety Plan; accident records</p> <p>Visual observation – Safety signs installed, workers in PPE and without PPE, designated parking area,</p>				

Issue	Mitigation Measures (Items to Monitor)	Monitoring Required/Methods/Parameters	Schedule / Frequency	Start/ Completion Date	Reporting	Responsibility
	<p>construction area including fences or enclosures</p> <ul style="list-style-type: none"> orient drivers to drive at low speeds, especially in market, school, hospital, urban areas. keep the roadway or bypass accessible to commuters to avoid traffic jam park at designated area. Detour road should be provided and accessible to commuters Temporary access of equipment and trucks must be established and approved by the sub-district officials Provide Protective Personal Equipment (PPE) to workers e.g. safety shoes, hardhats, earplugs, etc. A trained first aid personnel and health facility should be provided on site. Potable water and sanitary facilities should be provided to 	<p>potable water, sanitary facility, presence of first aid personnel, traffic condition, feedback from village people</p>				

Issue	Mitigation Measures (Items to Monitor)	Monitoring Required/Methods/Parameters	Schedule / Frequency	Start/ Completion Date	Reporting	Responsibility
	workers. <ul style="list-style-type: none"> To prevent the transmission of HIV/AIDS, the contractor should incorporate on the health and safety plan the education of workers about sexually transmitted disease. 					
Generation of employment particularly among women and unskilled people	<ul style="list-style-type: none"> The contractor should comply with the Labor and Gender Action Plan ; employ people from villages including women and unskilled workers 	Check reports/records on women/unskilled workers employed	Monthly	Construction stage	Compliance monitoring reports	DDIS Consultant, EA, IA, Contractor's Safeguard Specialist (self monitoring)
Operation Phase						
Traffic accident	<ul style="list-style-type: none"> Provide traffic signs on accident-prone points especially near schools, hospitals and market areas. Regular maintenance of road/bridges 	Check traffic signs installed ; accident record	Annually	Operation stage	Compliance monitoring reports	EA, IA,

VII. ANALYSIS OF ALTERNATIVES

122. Two (2) scenarios were considered on the analysis of alternatives for the project, these are:

- With the project (Reconstruction of roads on existing alignment),
- Without the project

123. Table 10 summarizes the rapid assessment done on the two (2) options in terms of environmental, social and economic considerations.

Table 10: Rapid assessment of road reconstruction option

Option	Environmental	Social	Economic
Reconstruction of road at existing location	<ul style="list-style-type: none"> • Environmental impacts are confined to the existing corridor • Reduced of dust pollution • Improved aesthetics 	<ul style="list-style-type: none"> • Reduced nuisance and health problems due to dust • Improved access to nearby communities served by the project • Improved road safety 	<ul style="list-style-type: none"> • With moderate cost due to construction • With reduced travel time, travel cost is reduced, improved economy
Without the project	<ul style="list-style-type: none"> • No new disturbance but problems with the existing road/bridges in terms of safety will remain unresolved and could be aggravated due to increase in traffic volume and the possible flooding in rainy season 	<ul style="list-style-type: none"> • Problems on health and safety, poor access to services, and socioeconomic condition will not improve 	<ul style="list-style-type: none"> • No cost • No improvement in the economy
HIGHEST RANKED OPTION	Reconstruction of road of existing location	Improve existing road condition and environmental issues in communities	Medium cost, but will provide great benefit for economic growth within the region

124. Based on assessment, the reconstruct of the existing road is the preferred option. This would resolve existing environmental and social issues associated with the present condition of such the structure. Also, it will provide a greater benefit to increase income in the community.

VIII. INFORMATION DISCLOSURE, CONSULTATION AND PARTICIPATION

125. MEF is the EA (executing agency) for the Project through its Project Coordination and Monitoring Unit (PCMU), which will be assisted by PCMU consultants. The PCMU has an Environment Focal Person to coordinate environmental and social safeguards planning and implementation, and these tasks will be assisted by the Safeguards Specialist in the PCMU consultant team. The PCMU will ensure that the respective IAs properly follow the IEEs and review framework (EARF) during subproject implementation. Three Project Implementation Units (PIUs) have been established in each of the IAs – MPWT, MRD, and MOWRAM. Each PIU has a Safeguards Focal Person, and they in turn will be supported by an Environment Specialist within the IA's consultant team. They will have the primary responsibility for disclosing information to the public and Affected Persons (APs).

126. The PIUs will undertake screening and classification of subprojects for submission to the PCMU and ADB. PIUs will prepare safeguards documents for approved subprojects. Safeguards documents will be reviewed and approved by the PCMU and ADB. PIUs will be tasked with the day-to-day implementation and monitoring of safeguards plans. PIUs will also obtain all clearances and fulfill government requirements. The PIUs will also have provincial offices with a Safeguards Coordinator who will be responsible for consulting with other Stakeholders, obtaining data required for safeguards plan preparation, monitoring and progress reports, and coordination with relevant departments such as department of environment to consult and/or obtain endorsement where necessary.

127. A series of public meetings with local authorities and people living within the project area have been conducted during the project development and design related to resettlement, design, environment and social factors, see in Figure 9. Furthermore the preparation of local community consultation should be continued for every stage of project design and implementation. Realistic impacts and issues will be updated and all impacts will be expediently mitigated. All such meetings encourage the full participation of the local communities. List of participants attended the public meeting, see in Appendix 4.

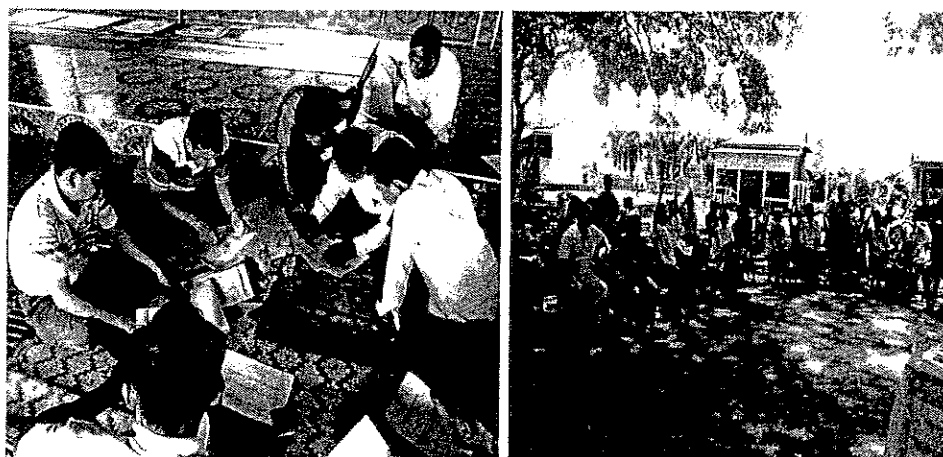


Figure 9: Public meeting with authorities and people living within the project area

IX. GRIEVANCE REDRESS MECHANISM

128. During site preparation and construction phases, there may be complaints related to the environmental performance of the project. To ensure that there will be a mechanism to resolve such complaints, the IAs shall undertake the following prior to the start of site works:

- Establish a grievance redress mechanism (GRM)
- Make public the existence of the GRM through public awareness campaigns; and
- Ensure that names and contact numbers of representatives of the IAs and contractors are placed on the notice boards outside the construction site and at local government offices (e.g., provincial and commune levels).

129. Through a Grievance Redress Committee (GRC), the concerns of affected people's can be promptly addressed, and complaints, and grievances about the project's environmental performance can be resolved at no cost to the complainant and without retribution. The GRC, which shall be established before commencement of site works, shall have members from the IAs (e.g. PDRD), commune councils, local NGO, and women's organizations. Grievances can be filed in writing or verbally with any member of the GRC. The committee will have 15 days to respond with a resolution. If unsatisfied with the decision, the existence of the GRC shall not impede the complainant's access to the Government's judicial or administrative remedies.

130. IAs shall make public the existence of this grievance redress mechanism through public awareness campaigns. They shall set-up a hotline for complaints and the hotline shall be publicized through the media and numbers placed on the notice boards outside the construction site and at local government offices (e.g., provincial, district, commune levels). Locally affected people will still be able to express grievances through the commune councils and these would be referred through the usual channels in those committees.

131. The GRC will receive, follow-up and prepare monthly reports on all complaints, disputes or questions received about the Project and corresponding actions taken to resolve the issues. The GRC will also use the punitive clauses of the 1996 Law on Environmental Protection and Natural Resources Management in conjunction with MOE to prosecute offending parties.

132. Villagers and APs are encouraged to voice complaints and these are to be duly investigated and reported through the contractor to the IA and so to MEF.

133. Environmental monitoring must be carried out by the construction supervision inspectors. Response to complaints will be based on the following schedule:

- Complaint made to contractor or others;
- Response by contractor or construction supervision consultants' inspectors;
- Weekly compiling of checklists by inspectors, with copies of checklists to be given to contractors as official notification of action being required, confirmation of receipt obtained by contractor signing copy, and joint inspection carried out if necessary;
- Monthly progress reports by inspectors by consolidating weekly reports;
- Corrective Action Reports (CARs) from contractors, as soon as action taken;

- Monthly progress meetings with contractors at which CARs from previous month examined and checked;
- Monthly progress reports to ADB detailing problems and Corrective Actions taken;
- Regular monitoring by the Local Environmental Specialist and semi-annual review by the International Environmental Specialist; and
- Confirmation with complainants that they are satisfied.

134. Review of progress must be checked on a daily basis by the inspectors. Any urgent issues must be drawn to the contractors' attention immediately. Failure by the contractor to respond in a timely or adequate manner must be raised with them at the monthly progress meetings. The complaints procedure is shown in Figure 10 below. This complaints procedure has been designed by Provincial Roads Improvement Project, Cambodia, September 2011.

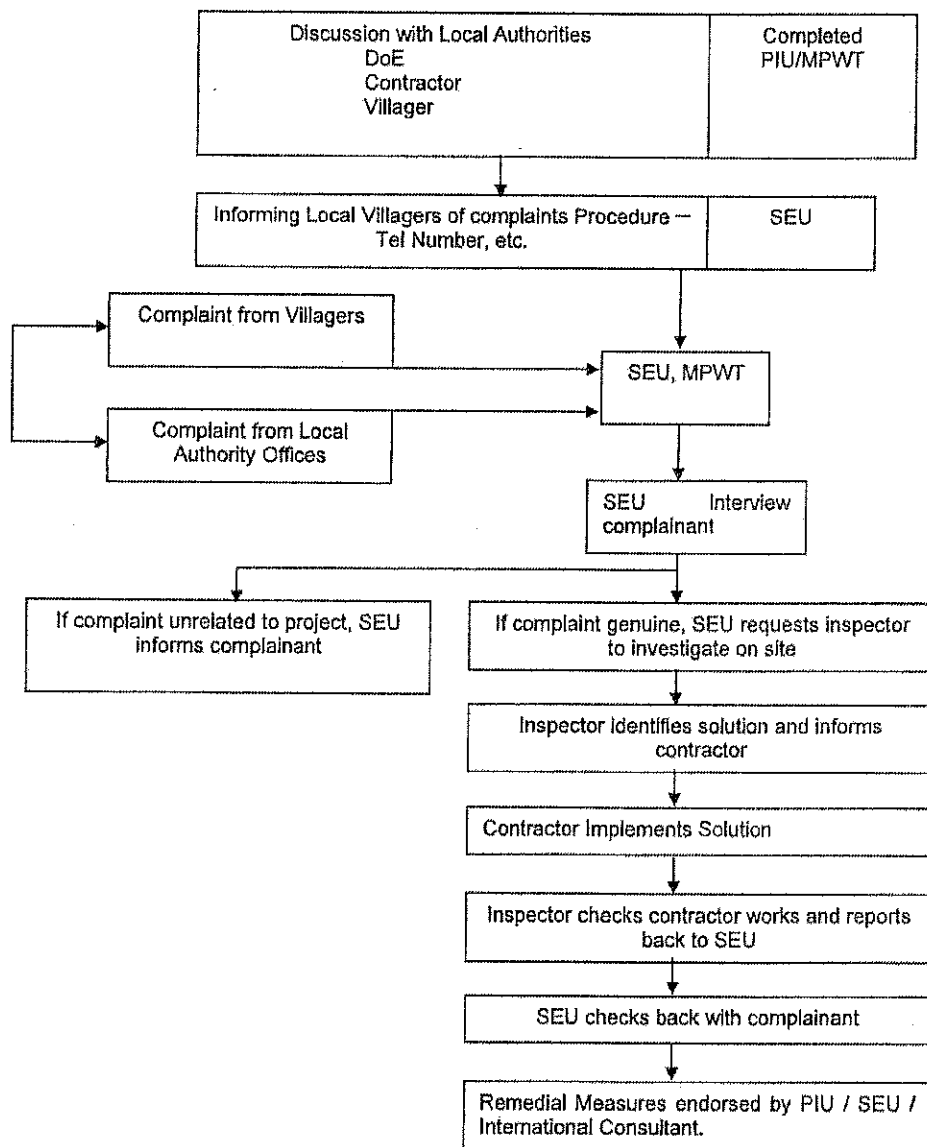


Figure 10: Complaints investigation procedure

X. ENVIRONMENTAL MANAGEMENT PLAN

135. The General Environmental Management Plan (EMP) gives guidance on how to mitigate the environmental concerns identified in connection with this project. The EMP deals with mitigation and management measures to be taken during Project implementation to avoid, reduce, and mitigate adverse environmental impacts.

136. IAs will ensure that the EMP is included in the tender documents for civil works. It will form part of the contract between the IA and the selected contractor and the requirements of the EMP will be contractually binding on the contractor. The conformity of contractors with environmental contract procedures and specifications shall be regularly monitored by the PCMU through the Social and Environmental Unit (SEU) during Project implementation. PCMU /SEU shall be assisted by the detailed design and implementation supervision consultant (DDIS) to undertake EMP monitoring and to prepare corresponding semi-annual reports for submission to ADB.

137. After appointment and mobilization the contractor must prepare his own version of the EMP known as the Contractors EMP (CEMP). This must give specific details of locations of borrow areas, borrow roads, workers camps and other facilities. This must be submitted to the Supervising Consultant for their approval before works commence.

138. The PCMU will monitor and measure the progress of EMP implementation. The monitoring activities will correspond with the project's risks and impacts and will be identified in the IEEs for subprojects. In addition to recording information of the work, deviation of work components from original scope, the PCMU will undertake site inspections and document review to verify compliance with the EMP and progress toward the final outcome.

139. Supervision consultants will submit monthly monitoring and implementation reports to the PIUs, who will take follow-up actions, if necessary. PIUs will submit quarterly monitoring and implementation reports to the PCMU. The PCMU will submit semi-annual monitoring reports to ADB. Project budgets will reflect the costs of monitoring and reporting requirements. Monitoring reports will be posted in a location accessible to the public. An example of Environmental and Social Monitoring Report Outline is given in **Appendix 2**.

140. The PCMU will document monitoring results, identify the necessary corrective actions, and reflect them in a corrective action plan. Each quarter the PCMU will study the compliance with the action plan developed in the previous quarter. Compliance with loan covenants will be screened by the EA.

141. ADB will review project performance against the EA's commitments as agreed in the legal documents. The extent of ADB's monitoring and supervision activities will be commensurate with the Project's risks and impacts. Monitoring and supervising of environmental safeguards will be integrated into the project performance management system. ADB will monitor projects on an ongoing basis until a project completion report is issued. ADB will carry out the following monitoring actions to supervise project implementation:

- conduct periodic site visits for projects with adverse environmental impacts;
- review the periodic monitoring reports submitted by the executing agency to ensure that adverse impacts and risks are mitigated as planned and as agreed with ADB;

- work with executing agency to rectify to the extent possible any failures to comply with their safeguard commitments, as covenanted in the legal agreements, and exercise remedies to re-establish compliance as appropriate; and
- prepare a project completion report that assesses whether the objective and desired outcomes of the safeguard plans have been achieved, taking into account the baseline conditions and the results of monitoring.

XI. CONCLUSION AND RECOMMENDATION

142. Based on the study of the existing environmental and social conditions in the project areas and potential impacts from project implementation, it is found that the project will provide many benefits to communities in the project area in terms of improved livelihood and health, with reduced risk to life and properties. Travel will be safer, at lower cost and with less travel time, after the project is completed.

143. During the construction phase, a number of temporary negative impacts (e.g. dust, noise, vibration, reduced air quality, road safety, worker's safety, wastewater, solid waste, water contamination and traffic jam) will occur. However, those impacts can be minimized by the adoption of environmental control and mitigation measures.

144. To reduce impacts, the following approaches are recommended:

- The environmental mitigation measures and environmental monitoring and management plan, as presented in the IEE report and the EMP enclosed in the bid documents must be implemented.
- Good cooperation between all stakeholders, especially IA, EA and local authorities should be undertaken.
- Consultation with the local community should be implemented so that IAs can update concerns and issues during project construction and operation.
- Further investigations are needed with regard to developing a suitable design for the borrow pits so that these may provide a range of multiple uses for the villagers whose land has been excavated.

145. The IEE has identified a range of potential impacts and determined suitable mitigation measures together with a monitoring program. Implementation of the proposed mitigation measures, the monitoring program and recommendation will avoid/reduce the impacts to insignificant levels. Hence no detailed EIA study is required for this project.

XII. APPENDICES

Appendix 1: Annex of Sub-Decree No 72 ANRK. BK. Date 11 August 1999 (List of the Projects Require an IEIA or EIA)

No.	Type and activities of the projects	Size / Capacity
A	Industrial	
I	Foods, Drinks, Tobacco	
1.	Food processing and caned	≥ 500 Tones/year
2.	All fruit drinks manufacturing	≥ 1,500 Litres / day
3.	Fruit manufacturing	≥ 500 ones/year
4.	Orange Juice manufacturing	All sizes
5.	Wine manufacturing	All sizes
6.	Alcohol and Beer brewery	All sizes
7.	Water supply	≥ 10,000 Users
8.	Tobacco manufacturing	≥ 10,000 Boxes/day
9.	Tobacco leave processing	≥ 350 Tones/ year
10.	Sugar refinery	≥ 3,000 Tones / year
11.	Rice mill and cereal grains	≥ 3,000 Tones / year
12.	Fish, soy bean, chili, tomato sources	≥ 500,000 Litres/ year
II.	Leather tanning, Garment and Textile	
1.	Textile and dyeing factory	All sizes
2.	Garments, washing, printing, dyeing	All sizes
3.	Leather tanning, and glue	All sizes
4.	Sponge- rubber factory	All sizes
III.	Wooden production	
1.	Plywood	≥ 100,000m ³ /year(log)
2.	Artificial wood	≥ 1,000 m ³ /year (log)
3.	Saw mill	≥ 50,000m ³ /year (log)
IV.	Paper	

No.	Type and activities of the projects	Size / Capacity
1.	Paper factory	All sizes
2.	Pulp and paper processing	All sizes
V.	Plastic, Rubber and Chemical	
1.	Plastic factory	All sizes
2.	Tire factory	≥ 500 Tones /year
3.	Rubber factory	≥ 1,000 Tones /year
4.	Battery industry	All sizes
5.	Chemical production industries	All sizes
6.	Chemical fertilizer plants	≥ 10,000 Tones /year
7.	Pesticide industry	All sizes
8.	Painting manufacturing	All sizes
9.	Fuel chemical	All sizes
10.	Liquid, powder, solid soaps manufacturing	All sizes
VI	Mining production other than metal	
1.	Cement industry	All sizes
2.	Oil refinery	All sizes
3.	Gas factory	All sizes
4.	Construction of oil and gas pipeline	≥ 2 Kilometres
5.	Oil and gas separation and storage facilities	≥ 1,000,000 Litres
6.	Fuel stations	≥ 20,000 Litres
7.	Mining	All sizes
8.	Glass and bottle factory	All sizes
9.	Bricks, roofing tile manufacturing	150,000 piece /month
10.	Flooring tile manufacturing	90,000 piece /month
11.	Calcium carbide plants	All sizes
12.	Producing of construction materials(Cement)	900 tones/month

No.	Type and activities of the projects	Size / Capacity
13.	Cow oil and motor oil manufacturing	All sizes
14.	Petroleum study research	All sizes
VII	Metal industries	
1.	Mechanical industries	All sizes
2.	Mechanical storage factory	All sizes
3.	Mechanical and shipyard enterprise	All sizes
VIII	Metal Processing Industrials	
1.	Manufacturing of harms, barbed wires, nets	≥ 300 Tones/month
2.	Steel mill, Irons, Aluminum	All sizes
3.	All kind of smelting	All sizes
IX	Other Industries	
1.	Waste processing, burning	All sizes
2.	Waste water treatment plants	All sizes
3.	Power plants	≥ 5 MW
4.	Hydropower	≥ 1 MW
5.	Cotton manufacturing	≥ 15 Tones/month
6.	Animal's food processing	≥ 10,000 Tones/year
B.	AGRICULTURE	
1.	Concession forest	≥ 10,000 Hectares
2.	Logging	≥ 500 Hectares
3.	Land covered by forest	≥ 500 Hectares
4.	Agriculture and agro-industrial land	≥ 10,000 Hectares
5.	Flooded and coastal forests	All sizes
6.	Irrigation systems	≥ 5,000 Hectares
7.	Drainage systems	≥ 5,000 Hectares
8.	Fishing ports	All sizes

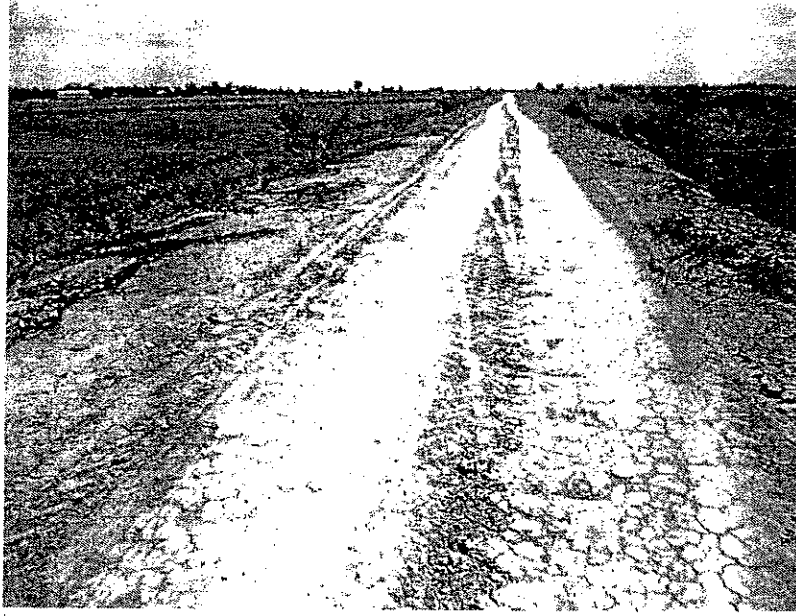
No.	Type and activities of the projects	Size / Capacity
C. TOURISM		
1.	Tourism areas	≥ 50 Hectares
2.	Goal field	≥ 18 Holes
D. INFRASTRUCTURE		
1.	Urbanization development	All sizes
2.	Industrial zones	All sizes
3.	Construction of bridge-roads	≥ 30 Tones weight
4.	Buildings	Height ≥ 12 m or floor ≥ 8,000 m ²
5.	Restaurants	≥ 500 Seats
6.	Hotels	≥ 60 Rooms
7.	Hotel adjacent to coastal area	≥ 40 Rooms
8.	National road construction	≥ 100 Kilometres
9.	Railway construction	All sizes
10.	Port construction	All sizes
11.	Airport construction	All sizes
12.	Dredging	≥ 50,000 m ³
13.	Damping site	≥ 200,000 people

Appendix 2: Environmental and Social Monitoring Report Outline

The level of detail and comprehensiveness of a monitoring report is commensurate with the complexity and significance of social and environmental impacts. A safeguard monitoring report may include the following elements:

- Background/context of the monitoring report (adequate information on the project, including physical progress of project activities, scope of monitoring report, reporting period, and the monitoring requirements including frequency of submission as agreed upon);
- Changes in project scope and adjusted safeguard measures, if applicable;
- Qualitative and quantitative monitoring data;
- Monitoring parameters/indicators and methods based on the monitoring plan/program previously agreed upon with ADB;
- Monitoring results compared against previously established benchmarks and compliance status (e.g., national environmental emission and ambient standards and/or standards set out in the Bank Group's Environmental, Health and Safety Guidelines; timeliness and adequacy of environmental mitigation measures; involuntary resettlement compensation rates and timeliness of payments, adequacy and timeliness of involuntary resettlement rehabilitation measures including serviced housing sites, house reconstruction, livelihood support measures, and training; budget for implementing environment management plan (EMP), resettlement plan, or indigenous people plan, timeliness and adequacy of capacity building, etc.);
- Monitoring results compared against the objectives of safeguards or desired outcomes documented (e.g. involuntary resettlement impacts avoided or minimized; livelihood restored or enhanced; indigenous people (IP's) identity, human right, livelihood systems and cultural uniqueness fully respected; indigenous people not suffer adverse impacts, environmental impacts avoided or minimized, etc.);
- If noncompliance or any major gaps identified, include a corrective action plan;
- Records on disclosure of monitoring information to affected communities;
- Identification of key issues, or complaints from affected people, or recommendations for improvement;
- Monitoring adjustment measures recommended based on monitoring experience/trends and stakeholders response;
- Information about actual institutional arrangement for implementing the monitoring program/plan provided or adjusted, as may be required;
- Proposed items of focus for the next report and due date.

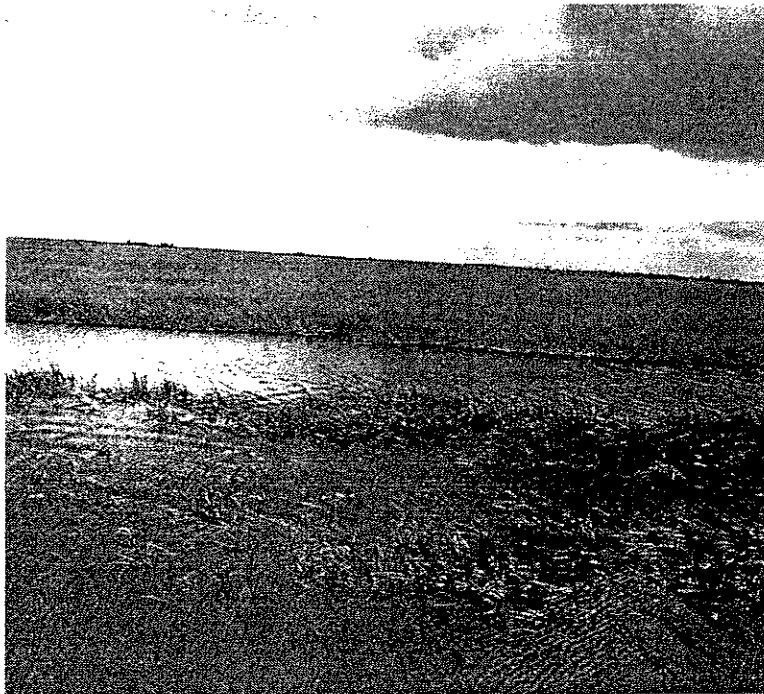
Appendix 3: Photos



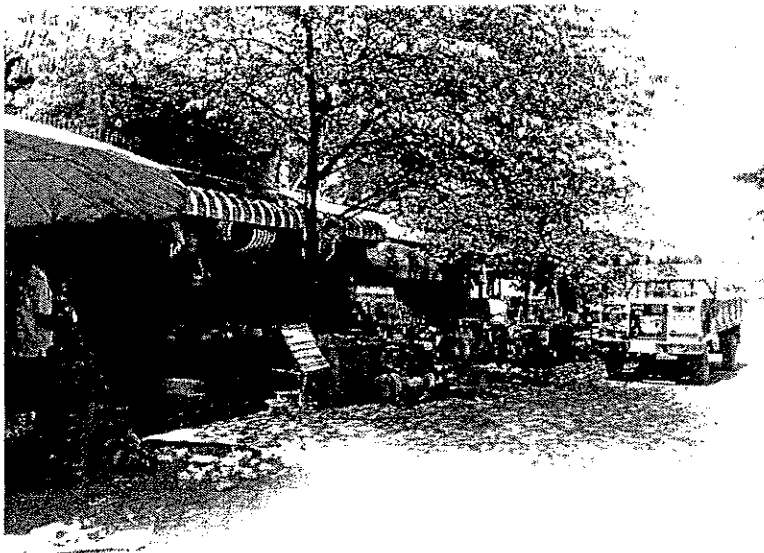
Existing road will be replaced to DBST of PR 156D at Banteay Mean Chey Province



Pagoda located along the alignment



Rice field was found within project area along the PR 156D



Business shops were found within project area along the PR 156D

Appendix 4: List of participants attended the public meeting

បញ្ជីចំណុះអ្នកចូលរួមប្រជុំសាធារណៈសម្រាប់គម្រោង 956D (AF-FDERP), ក្រុងព្រះវិហារ
 List of Participation during Public Consultation for PR 156D (AF-FDERP),
 Preah Netr Preah District, Banteay Meanchey Province

ល.រ No.	ឈ្មោះ Name	ឈ្មោះ Sex	អាយុ Age	តំណែង Position	ឈ្មោះភូមិ Village name	ហត្ថលេខា Signature
1	ឈ្មោះ គង់	ប្រុស	54	អគ្គនាយក	ព្រៃស្រែ	[Signature]
2	ឈ្មោះ គង់	ប្រុស	61	អគ្គនាយក	ព្រៃស្រែ	[Signature]
3	ឈ្មោះ គង់	ប្រុស	52	អគ្គនាយក	ព្រៃស្រែ	[Signature]
4	ឈ្មោះ គង់	ប្រុស	67	អគ្គនាយក	ព្រៃស្រែ	[Signature]
5	ឈ្មោះ គង់	ប្រុស	51	អគ្គនាយក	ព្រៃស្រែ	[Signature]
6	ឈ្មោះ គង់	ប្រុស	65	អគ្គនាយក	ព្រៃស្រែ	[Signature]
7	ឈ្មោះ គង់	ប្រុស	85	អគ្គនាយក	ព្រៃស្រែ	[Signature]
8	ឈ្មោះ គង់	ប្រុស	65	អគ្គនាយក	ព្រៃស្រែ	[Signature]
9	ឈ្មោះ គង់	ប្រុស	37	អគ្គនាយក	ព្រៃស្រែ	[Signature]
10	ឈ្មោះ គង់	ប្រុស	62	អគ្គនាយក	ព្រៃស្រែ	[Signature]
11	ឈ្មោះ គង់	ប្រុស	29	អគ្គនាយក	ព្រៃស្រែ	[Signature]
12	ឈ្មោះ គង់	ប្រុស	61	អគ្គនាយក	ព្រៃស្រែ	[Signature]
13	ឈ្មោះ គង់	ប្រុស	60	អគ្គនាយក	ព្រៃស្រែ	[Signature]
14	ឈ្មោះ គង់	ប្រុស	67	អគ្គនាយក	ព្រៃស្រែ	[Signature]
15	ឈ្មោះ គង់	ប្រុស	21	អគ្គនាយក	ព្រៃស្រែ	[Signature]
16	ឈ្មោះ គង់	ប្រុស	69	អគ្គនាយក	ព្រៃស្រែ	[Signature]
17	ឈ្មោះ គង់	ប្រុស	61	អគ្គនាយក	ព្រៃស្រែ	[Signature]
18	ឈ្មោះ គង់	ប្រុស	42	អគ្គនាយក	ព្រៃស្រែ	[Signature]
19	ឈ្មោះ គង់	ប្រុស	62	អគ្គនាយក	ព្រៃស្រែ	[Signature]
20	ឈ្មោះ គង់	ប្រុស	49	អគ្គនាយក	ព្រៃស្រែ	[Signature]
21	ឈ្មោះ គង់	ប្រុស	39	អគ្គនាយក	ព្រៃស្រែ	[Signature]
22	ឈ្មោះ គង់	ប្រុស	61	អគ្គនាយក	ព្រៃស្រែ	[Signature]
23	ឈ្មោះ គង់	ប្រុស	62	អគ្គនាយក	ព្រៃស្រែ	[Signature]
24	ឈ្មោះ គង់	ប្រុស	59	អគ្គនាយក	ព្រៃស្រែ	[Signature]
25	ឈ្មោះ គង់	ប្រុស	62	អគ្គនាយក	ព្រៃស្រែ	[Signature]
26	ឈ្មោះ គង់	ប្រុស	29	អគ្គនាយក	ព្រៃស្រែ	[Signature]
27	ឈ្មោះ គង់	ប្រុស	53	អគ្គនាយក	ព្រៃស្រែ	[Signature]
28	ឈ្មោះ គង់	ប្រុស	66	អគ្គនាយក	ព្រៃស្រែ	[Signature]
29	ឈ្មោះ គង់	ប្រុស	53	អគ្គនាយក	ព្រៃស្រែ	[Signature]

Sl. No.	Name	Sex	Age	Position	Village name	Signature
30
31
32
33
34
35
36
37
38
39
40
41
42
43
44
45
46
47
48						
49						
50						
51						
52						
53						
54						
55						
56						
57						
58						
59						
60						

បញ្ជីចំណុះអ្នកចូលរួមក្នុងដំណាក់កាលទី១នៃការប្រមូលយោបល់សាធារណៈស្តីពីគម្រោងសាងសង់ និង ប្រតិបត្តិការប្រតិបត្តិការ
 List of Participation during Public Consultation for PH 105D (AP-FORUP)
 Preah Nêr Preah District Banteay Meanchey Province

ល.រ No	ឈ្មោះ Name	ភេទ Sex	អាយុ Age	ស្រុក/ក្រុមប្រឹក្សា Municipality	ឃុំ/ភូមិ Village name	សញ្ជាតិ Nationality
1	ស្រី គង់ ឈឹម	ស្រី	63	ស្រុក ប្រាសាទ	ឃុំ ប្រាសាទ	កម្ពុជា
2	ស្រី គង់ ឈឹម	ស្រី	47	ស្រុក ប្រាសាទ	ឃុំ ប្រាសាទ	កម្ពុជា
3	ស្រី គង់ ឈឹម	ស្រី	61	ស្រុក ប្រាសាទ	ឃុំ ប្រាសាទ	កម្ពុជា
4	ស្រី គង់ ឈឹម	ស្រី	52	ស្រុក ប្រាសាទ	ឃុំ ប្រាសាទ	កម្ពុជា
5	ស្រី គង់ ឈឹម	ស្រី	44	ស្រុក ប្រាសាទ	ឃុំ ប្រាសាទ	កម្ពុជា
6						
7						
8						
9						
10						
11						
12						
13						
14						
15						
16						
17						
18						
19						
20						
21						
22						
23						
24						
25						
26						
27						
28						
29						

XIII. REFERENCES

- ADB, 2007: Initial Environmental Examination. Greater Mekong Sub-region; Mekong Tourism Development Project; Siem Reap Wastewater Management Project.
- ADB, 2011: Initial Environmental Examination. Cambodia: Provincial Road Improvement Project.
- ADB, 2009: Safeguard Policy Statement
- Baran E., 2005. Cambodian inland fisheries: facts, figures and context. WorldFish Center and Inland Fisheries Research and Development Institute, Phnom Penh, Cambodia.
- CTD, 2012: Initial Environmental Examination of wastewater treatment plant, BTB. Corridor Town Development Project, ADB.
- EARF, 2012: Cambodia: Food Damage Emergency Reconstruction Project; Environmental Assessment and Review Framework.
- GMS, 2002: Initial Environmental Examination; GMS Road Improvement Project (2002).
- <http://en.wikipedia.org/wiki/Cambodia>.
- NREM, 2007: NREM Data Tool Box – Royal Danish Embassy- Danida - Phnom Penh, Cambodia, March 2007.
- Population Census, 2008: General Population Census 2008; National Report on Final Census Results; National Institute of Statistics, Ministry of Planning.
- Royal decree on the creation and designation of protected areas (1993).
- Sophat Seak, Dietrich Schmidt-Vogt & Gopal B. Thapa. A comparison between biodiversity monitoring systems to improve natural resource management in Tonle Sap Biosphere Reserve, Cambodia 2012.
- Statistical Yearbook of Cambodia 2011.
- World Bank (2003): Cambodia Environment Monitor 2003.

1	2	3	4	5	6	7	8	9	10	11	12	13	14	15	16	17	18	19	20	21	22	23	24	25	26	27	28	29	30	31	32	33	34	35	36	37	38	39	40	41	42	43	44	45	46	47	48	49	50	51	52	53	54	55	56	57	58	59	60	61	62	63	64	65	66	67	68	69	70	71	72	73	74	75	76	77	78	79	80	81	82	83	84	85	86	87	88	89	90	91	92	93	94	95	96	97	98	99	100	101	102	103	104	105	106	107	108	109	110	111	112	113	114	115	116	117	118	119	120	121	122	123	124	125	126	127	128	129	130	131	132	133	134	135	136	137	138	139	140	141	142	143	144	145	146	147	148	149	150	151	152	153	154	155	156	157	158	159	160	161	162	163	164	165	166	167	168	169	170	171	172	173	174	175	176	177	178	179	180	181	182	183	184	185	186	187	188	189	190	191	192	193	194	195	196	197	198	199	200	201	202	203	204	205	206	207	208	209	210	211	212	213	214	215	216	217	218	219	220	221	222	223	224	225	226	227	228	229	230	231	232	233	234	235	236	237	238	239	240	241	242	243	244	245	246	247	248	249	250	251	252	253	254	255	256	257	258	259	260	261	262	263	264	265	266	267	268	269	270	271	272	273	274	275	276	277	278	279	280	281	282	283	284	285	286	287	288	289	290	291	292	293	294	295	296	297	298	299	300	301	302	303	304	305	306	307	308	309	310	311	312	313	314	315	316	317	318	319	320	321	322	323	324	325	326	327	328	329	330	331	332	333	334	335	336	337	338	339	340	341	342	343	344	345	346	347	348	349	350	351	352	353	354	355	356	357	358	359	360	361	362	363	364	365	366	367	368	369	370	371	372	373	374	375	376	377	378	379	380	381	382	383	384	385	386	387	388	389	390	391	392	393	394	395	396	397	398	399	400	401	402	403	404	405	406	407	408	409	410	411	412	413	414	415	416	417	418	419	420	421	422	423	424	425	426	427	428	429	430	431	432	433	434	435	436	437	438	439	440	441	442	443	444	445	446	447	448	449	450	451	452	453	454	455	456	457	458	459	460	461	462	463	464	465	466	467	468	469	470	471	472	473	474	475	476	477	478	479	480	481	482	483	484	485	486	487	488	489	490	491	492	493	494	495	496	497	498	499	500	501	502	503	504	505	506	507	508	509	510	511	512	513	514	515	516	517	518	519	520	521	522	523	524	525	526	527	528	529	530	531	532	533	534	535	536	537	538	539	540	541	542	543	544	545	546	547	548	549	550	551	552	553	554	555	556	557	558	559	560	561	562	563	564	565	566	567	568	569	570	571	572	573	574	575	576	577	578	579	580	581	582	583	584	585	586	587	588	589	590	591	592	593	594	595	596	597	598	599	600	601	602	603	604	605	606	607	608	609	610	611	612	613	614	615	616	617	618	619	620	621	622	623	624	625	626	627	628	629	630	631	632	633	634	635	636	637	638	639	640	641	642	643	644	645	646	647	648	649	650	651	652	653	654	655	656	657	658	659	660	661	662	663	664	665	666	667	668	669	670	671	672	673	674	675	676	677	678	679	680	681	682	683	684	685	686	687	688	689	690	691	692	693	694	695	696	697	698	699	700	701	702	703	704	705	706	707	708	709	710	711	712	713	714	715	716	717	718	719	720	721	722	723	724	725	726	727	728	729	730	731	732	733	734	735	736	737	738	739	740	741	742	743	744	745	746	747	748	749	750	751	752	753	754	755	756	757	758	759	760	761	762	763	764	765	766	767	768	769	770	771	772	773	774	775	776	777	778	779	780	781	782	783	784	785	786	787	788	789	790	791	792	793	794	795	796	797	798	799	800	801	802	803	804	805	806	807	808	809	810	811	812	813	814	815	816	817	818	819	820	821	822	823	824	825	826	827	828	829	830	831	832	833	834	835	836	837	838	839	840	841	842	843	844	845	846	847	848	849	850	851	852	853	854	855	856	857	858	859	860	861	862	863	864	865	866	867	868	869	870	871	872	873	874	875	876	877	878	879	880	881	882	883	884	885	886	887	888	889	890	891	892	893	894	895	896	897	898	899	900	901	902	903	904	905	906	907	908	909	910	911	912	913	914	915	916	917	918	919	920	921	922	923	924	925	926	927	928	929	930	931	932	933	934	935	936	937	938	939	940	941	942	943	944	945	946	947	948	949	950	951	952	953	954	955	956	957	958	959	960	961	962	963	964	965	966	967	968	969	970	971	972	973	974	975	976	977	978	979	980	981	982	983	984	985	986	987	988	989	990	991	992	993	994	995	996	997	998	999	1000	1001	1002	1003	1004	1005	1006	1007	1008	1009	1010	1011	1012	1013	1014	1015	1016	1017	1018	1019	1020	1021	1022	1023	1024	1025	1026	1027	1028	1029	1030	1031	1032	1033	1034	1035	1036	1037	1038	1039	1040	1041	1042	1043	1044	1045	1046	1047	1048	1049	1050	1051	1052	1053	1054	1055	1056	1057	1058	1059	1060	1061	1062	1063	1064	1065	1066	1067	1068	1069	1070	1071	1072	1073	1074	1075	1076	1077	1078	1079	1080	1081	1082	1083	1084	1085	1086	1087	1088	1089	1090	1091	1092	1093	1094	1095	1096	1097	1098	1099	1100	1101	1102	1103	1104	1105	1106	1107	1108	1109	1110	1111	1112	1113	1114	1115	1116	1117	1118	1119	1120	1121	1122	1123	1124	1125	1126	1127	1128	1129	1130	1131	1132	1133	1134	1135	1136	1137	1138	1139	1140	1141	1142	1143	1144	1145	1146	1147	1148	1149	1150	1151	1152	1153	1154	1155	1156	1157	1158	1159	1160	1161	1162	1163	1164	1165	1166	1167	1168	1169	1170	1171	1172	1173	1174	1175	1176	1177	1178	1179	1180	1181	1182	1183	1184	1185	1186	1187	1188	1189	1190	1191	1192	1193	1194	1195	1196	1197	1198	1199	1200	1201	1202	1203	1204	1205	1206	1207	1208	1209	1210	1211	1212	1213	1214	1215	1216	1217	1218	1219	1220	1221	1222	1223	1224	1225	1226	1227	1228	1229	1230	1231	1232	1233	1234	1235	1236	1237	1238	1239	1240	1241	1242	1243	1244	1245	1246	1247	1248	1249	1250	1251	1252	1253	1254	1255	1256	1257	1258	1259	1260	1261	1262	1263	1264	1265	1266	1267	1268	1269	1270	1271	1272	1273	1274	1275	1276	1277	1278	1279	1280	1281	1282	1283	1284	1285	1286	1287	1288	1289	1290	1291	1292	1293	1294	1295	1296	1297	1298	1299	1300	1301	1302	1303	1304	1305	1306	1307	1308	1309	1310	1311	1312	1313	1314	1315	1316	1317	1318	1319	1320	1321	1322	1323	1324	1325	1326	1327	1328	1329	1330	1331	1332	1333	1334	1335	1336	1337	1338	1339	1340	1341	1342	1343	1344	1345	1346	1347	1348	1349	1350	1351	1352	1353	1354	1355	1356	1357	1358	1359	1360	1361	1362	1363	1364	1365	1366	1367	1368	1369	1370	1371	1372	1373	1374	1375	1376	1377	1378	1379	1380	1381	1382	1383	1384	1385	1386	1387	1388	1389	1390	1391	1392	1393	1394	1395	1396	1397	1398	1399	1400	1401	1402	1403	1404	1405	1406	1407	1408	1409	1410	1411	1412	1413	1414	1415	1416	1417	1418	1419	1420	1421	1422	1423	1424	1425	1426	1427	1428	1429	1430	1431	1432	1433	1434	1435	1436	1437	1438	1439	1440	1441	1442	1443	1444	1445	1446	1447	1448	1449	1450	1451	1452	1453	1454	1455	1456	1457	1458	1459	1460	1461	1462	1463	1464	1465	1466	1467	1468	1469	1470	1471	1472	1473	1474	1475	1476	1477	1478	1479	1480	1481	1482	1483	1484	1485	1486	1487	1488	1489	1490	1491	1492	1493	1494	1495	149
---	---	---	---	---	---	---	---	---	----	----	----	----	----	----	----	----	----	----	----	----	----	----	----	----	----	----	----	----	----	----	----	----	----	----	----	----	----	----	----	----	----	----	----	----	----	----	----	----	----	----	----	----	----	----	----	----	----	----	----	----	----	----	----	----	----	----	----	----	----	----	----	----	----	----	----	----	----	----	----	----	----	----	----	----	----	----	----	----	----	----	----	----	----	----	----	----	----	----	-----	-----	-----	-----	-----	-----	-----	-----	-----	-----	-----	-----	-----	-----	-----	-----	-----	-----	-----	-----	-----	-----	-----	-----	-----	-----	-----	-----	-----	-----	-----	-----	-----	-----	-----	-----	-----	-----	-----	-----	-----	-----	-----	-----	-----	-----	-----	-----	-----	-----	-----	-----	-----	-----	-----	-----	-----	-----	-----	-----	-----	-----	-----	-----	-----	-----	-----	-----	-----	-----	-----	-----	-----	-----	-----	-----	-----	-----	-----	-----	-----	-----	-----	-----	-----	-----	-----	-----	-----	-----	-----	-----	-----	-----	-----	-----	-----	-----	-----	-----	-----	-----	-----	-----	-----	-----	-----	-----	-----	-----	-----	-----	-----	-----	-----	-----	-----	-----	-----	-----	-----	-----	-----	-----	-----	-----	-----	-----	-----	-----	-----	-----	-----	-----	-----	-----	-----	-----	-----	-----	-----	-----	-----	-----	-----	-----	-----	-----	-----	-----	-----	-----	-----	-----	-----	-----	-----	-----	-----	-----	-----	-----	-----	-----	-----	-----	-----	-----	-----	-----	-----	-----	-----	-----	-----	-----	-----	-----	-----	-----	-----	-----	-----	-----	-----	-----	-----	-----	-----	-----	-----	-----	-----	-----	-----	-----	-----	-----	-----	-----	-----	-----	-----	-----	-----	-----	-----	-----	-----	-----	-----	-----	-----	-----	-----	-----	-----	-----	-----	-----	-----	-----	-----	-----	-----	-----	-----	-----	-----	-----	-----	-----	-----	-----	-----	-----	-----	-----	-----	-----	-----	-----	-----	-----	-----	-----	-----	-----	-----	-----	-----	-----	-----	-----	-----	-----	-----	-----	-----	-----	-----	-----	-----	-----	-----	-----	-----	-----	-----	-----	-----	-----	-----	-----	-----	-----	-----	-----	-----	-----	-----	-----	-----	-----	-----	-----	-----	-----	-----	-----	-----	-----	-----	-----	-----	-----	-----	-----	-----	-----	-----	-----	-----	-----	-----	-----	-----	-----	-----	-----	-----	-----	-----	-----	-----	-----	-----	-----	-----	-----	-----	-----	-----	-----	-----	-----	-----	-----	-----	-----	-----	-----	-----	-----	-----	-----	-----	-----	-----	-----	-----	-----	-----	-----	-----	-----	-----	-----	-----	-----	-----	-----	-----	-----	-----	-----	-----	-----	-----	-----	-----	-----	-----	-----	-----	-----	-----	-----	-----	-----	-----	-----	-----	-----	-----	-----	-----	-----	-----	-----	-----	-----	-----	-----	-----	-----	-----	-----	-----	-----	-----	-----	-----	-----	-----	-----	-----	-----	-----	-----	-----	-----	-----	-----	-----	-----	-----	-----	-----	-----	-----	-----	-----	-----	-----	-----	-----	-----	-----	-----	-----	-----	-----	-----	-----	-----	-----	-----	-----	-----	-----	-----	-----	-----	-----	-----	-----	-----	-----	-----	-----	-----	-----	-----	-----	-----	-----	-----	-----	-----	-----	-----	-----	-----	-----	-----	-----	-----	-----	-----	-----	-----	-----	-----	-----	-----	-----	-----	-----	-----	-----	-----	-----	-----	-----	-----	-----	-----	-----	-----	-----	-----	-----	-----	-----	-----	-----	-----	-----	-----	-----	-----	-----	-----	-----	-----	-----	-----	-----	-----	-----	-----	-----	-----	-----	-----	-----	-----	-----	-----	-----	-----	-----	-----	-----	-----	-----	-----	-----	-----	-----	-----	-----	-----	-----	-----	-----	-----	-----	-----	-----	-----	-----	-----	-----	-----	-----	-----	-----	-----	-----	-----	-----	-----	-----	-----	-----	-----	-----	-----	-----	-----	-----	-----	-----	-----	-----	-----	-----	-----	-----	-----	-----	-----	-----	-----	-----	-----	-----	-----	-----	-----	-----	-----	-----	-----	-----	-----	-----	-----	-----	-----	-----	-----	-----	-----	-----	-----	-----	-----	-----	-----	-----	-----	-----	-----	-----	-----	-----	-----	-----	-----	-----	-----	-----	-----	-----	-----	-----	-----	-----	-----	-----	-----	-----	-----	-----	-----	-----	-----	-----	-----	-----	-----	-----	-----	-----	-----	-----	-----	-----	-----	-----	-----	-----	-----	-----	-----	-----	-----	-----	-----	-----	-----	-----	-----	-----	-----	-----	-----	-----	-----	-----	-----	-----	-----	-----	-----	-----	-----	-----	-----	-----	-----	-----	-----	-----	-----	-----	-----	-----	-----	-----	-----	-----	-----	-----	-----	-----	-----	-----	-----	-----	-----	-----	-----	-----	-----	-----	-----	-----	-----	-----	-----	-----	-----	-----	-----	-----	-----	-----	-----	-----	-----	-----	-----	-----	-----	-----	-----	-----	-----	-----	-----	-----	-----	-----	-----	-----	-----	-----	-----	-----	-----	-----	-----	-----	-----	-----	-----	-----	-----	-----	-----	-----	-----	-----	-----	-----	-----	-----	-----	-----	-----	-----	-----	-----	-----	-----	-----	-----	-----	-----	-----	-----	-----	-----	-----	-----	-----	-----	-----	-----	-----	-----	-----	-----	-----	-----	-----	-----	-----	-----	-----	-----	-----	-----	-----	-----	-----	-----	-----	-----	-----	-----	-----	-----	-----	-----	-----	-----	-----	-----	-----	-----	-----	-----	-----	-----	-----	-----	-----	-----	-----	-----	-----	-----	-----	-----	-----	-----	-----	-----	-----	-----	-----	-----	-----	-----	-----	-----	-----	-----	-----	-----	-----	-----	-----	-----	-----	-----	-----	-----	-----	-----	-----	-----	-----	-----	-----	-----	-----	-----	-----	-----	-----	-----	-----	-----	-----	-----	-----	-----	-----	-----	-----	-----	-----	-----	-----	-----	-----	-----	-----	-----	-----	-----	-----	-----	-----	-----	-----	-----	-----	-----	-----	-----	-----	-----	-----	-----	-----	-----	-----	-----	-----	-----	-----	-----	-----	-----	-----	-----	-----	-----	-----	-----	-----	-----	-----	------	------	------	------	------	------	------	------	------	------	------	------	------	------	------	------	------	------	------	------	------	------	------	------	------	------	------	------	------	------	------	------	------	------	------	------	------	------	------	------	------	------	------	------	------	------	------	------	------	------	------	------	------	------	------	------	------	------	------	------	------	------	------	------	------	------	------	------	------	------	------	------	------	------	------	------	------	------	------	------	------	------	------	------	------	------	------	------	------	------	------	------	------	------	------	------	------	------	------	------	------	------	------	------	------	------	------	------	------	------	------	------	------	------	------	------	------	------	------	------	------	------	------	------	------	------	------	------	------	------	------	------	------	------	------	------	------	------	------	------	------	------	------	------	------	------	------	------	------	------	------	------	------	------	------	------	------	------	------	------	------	------	------	------	------	------	------	------	------	------	------	------	------	------	------	------	------	------	------	------	------	------	------	------	------	------	------	------	------	------	------	------	------	------	------	------	------	------	------	------	------	------	------	------	------	------	------	------	------	------	------	------	------	------	------	------	------	------	------	------	------	------	------	------	------	------	------	------	------	------	------	------	------	------	------	------	------	------	------	------	------	------	------	------	------	------	------	------	------	------	------	------	------	------	------	------	------	------	------	------	------	------	------	------	------	------	------	------	------	------	------	------	------	------	------	------	------	------	------	------	------	------	------	------	------	------	------	------	------	------	------	------	------	------	------	------	------	------	------	------	------	------	------	------	------	------	------	------	------	------	------	------	------	------	------	------	------	------	------	------	------	------	------	------	------	------	------	------	------	------	------	------	------	------	------	------	------	------	------	------	------	------	------	------	------	------	------	------	------	------	------	------	------	------	------	------	------	------	------	------	------	------	------	------	------	------	------	------	------	------	------	------	------	------	------	------	------	------	------	------	------	------	------	------	------	------	------	------	------	------	------	------	------	------	------	------	------	------	------	------	------	------	------	------	------	------	------	------	------	------	------	------	------	------	------	------	------	------	------	------	------	------	------	------	------	------	------	------	------	------	------	------	------	------	------	------	------	------	------	------	------	------	------	------	------	------	------	------	------	------	------	------	------	------	------	------	------	------	------	------	------	------	------	------	------	------	------	------	------	------	------	------	------	------	------	------	------	------	------	------	------	------	------	------	------	------	------	------	------	------	------	------	------	------	------	------	-----