



Social Monitoring Report

Project Number: 47273-003 /004 /005 /006

Loan Numbers: Tranche 1 – 3171

Tranche 2 – 3221 /3222

Tranche 3 – 3325 /3326

Tranche 4 – 3610

Semi Annual Report

January to June 2018

June 2018

SRI: Integrated Road Investment Program PIC 01 – Southern Province

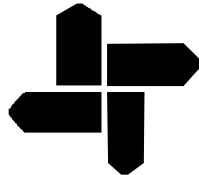
Prepared by the Road Development Authority, Ministry of Highways and Road Development for the Asian Development Bank.

This social monitoring report is a document of the borrower. The views expressed herein do not necessarily represent those of ADB's Board of Directors, Management, or staff, and may be preliminary in nature. Your attention is directed to the "terms of use" section on ADB's website.'. In preparing any country program or strategy, financing any project, or by making any designation of or reference to a particular territory or geographic area in this document, the Asian Development Bank does not intend to make any judgments as to the legal or other status of any territory or area

Asian Development Bank

DEMOCRATIC SOCIALIST REPUBLIC OF SRI LANKA

Ministry of Highways & Road Development
Road Development Authority



Asian Development Bank Funded
Integrated Road Investment Program – iRoad
PIC-01– Southern Province

SOCIAL SAFEGUARDS MONITORING SEMI- ANNUAL REPORT JANUARY - JUNE 2018

Prepared by:

MGC-ECL. JOINT VENTURE

Submitted to:

Ministry of Highways & Road Development
Road Development Authority
iRoad (SP)



MGC - ECL JOINT VENTURE



Table of Contents

1. INTRODUCTION	1
1.1 Background of the Project	1
1.2 Consulting Services Contract	4
1.3 Scope of the PIC Services	4
1.4 Overview of Institutional Framework	5
1.5 Context and Purpose of this Report	6
2. COMPLIANCE ON SOCIAL SAFEGUARDS REQUIREMENTS	7
2.1 Compliance on Social Safeguards Provisions of the Loan Covenant	8
2.2 Compliance with Requirements in the Resettlement Framework (RF)	12
2.3 Compliance to the Social Requirements under the Project Facility Administration Manual (FAM)	12
3. COMPLIANCE WITH RESPECT TO GENDER ACTION PLAN	17
3.1 Gender involvement in Cooperate Social Responsibility (CSR) Programs	17
3.2 Staff and labour involvement	17
3.3 Public and Private Sector involvement	20
3.4 Women Participate actively at training workshops	21
3.5 Elderly- Women- Children- Disabled (EWCD) Friendly Design	21
4. SOCIAL SAFEGUARDS ISSUES AND MITIGATION MEASURES IMPLEMENTED	21
4.1 Status of Civil Work Implementation in project 1 (PIC-01), Southern Province	21
4.2 Issues and Mitigation Measures Implemented	23
4.2.1 Introduction of concept of Context Sensitive Design (CSD)	23
4.2.2 Grievance Redress Mechanism	23
4.2.2.1 Establishment of GRCs at Grama Niladhari Division (GND) Level & Divisional Secretariat Division (DSD) level	23
4.2.2.2 Grievance Redress Committees (GRCs)	23
4.2.2.3 Receiving Grievances	24
4.2.2.4 Number of GRC meetings held during January to June, 2018	29
4.2.3 Addressing Complaints (Complaints, Grievances, Requests and Suggestions) at Three (3) levels;	30
4.2.4 Design Changes made due to Public Requests;	31
4.2.4.1 Cost invested to respond Public Requests	32
4.3 HIV/AIDS Prevention and Health awareness programmes-Step 1 and 2	35
4.4 Road Safety Awareness Programmes for school community	35
4.5 Corporate Social Responsibility (CSR) Implemented by Contractors and PIC	35
4.6 Workshops conducted	37
4.7 The Socio – Economic Impact Assessment (midterm) Survey- 2018	39
5. LAND DONATION	41
5.1 Status of Land Donation	42
6. STAKEHOLDER COORDINATION	43
7. MONITORING	46
7.1 Monitoring – By Consultants (PIC-01)	46
7.2 Monitoring – By Environment and Social Development Division (ESDD), RDA	48
7.3 Monitoring – By CSD and safeguards Specialist of TA8473, ADB	48
7.4 ADB monitoring visits	49

8. CONCLUSION AND RECOMMENDATIONS	51
8.1 Conclusion	51
8.2 Recommendations	53
Annexure - 01 Overall Organization Chart for PIC	i
Annexure - 02 Design changes made to the original design of roads due to public requests	ii
Annexure - 03 Cooperate Social Responsibility (CSR) programs conducted	iii
Annexure - 04 Concise report on Workshop on Integrating Gender Perspective into Analysis and Planning in the Transport Sector– Galle District	iv
Annexure - 05 A sample of Data Base (G3)-Land Donation	v
Annexure - 06 Status of Land Donation	vi

List of abbreviations

ADB	Asian Development Bank
AP	Affected Person
ARE	Assistant Resident Engineer
BOQ	Bills of Quantities
CRC	Conventional Road Contracts
CSR	Corporate Social Responsibility
DSD	Divisional Secretary Division
EHS	Environmental, Health and Safety
ES	Environmental Specialist
ESDD	Environmental and Social Development Division
EWCD	Elderly Women Children Disabled
FAM	Project Facility Administration Manual
FGD	Focus Group Discussion
FIDIC	International Federation of Consulting Engineers (<i>Federation Internationale des Ingenieurs Conseils</i>)
FS	Feasibility Study
GAP	Gender Action Plan
GND	Grama Niladari Division
GOSL	Government of Sri Lanka
GRC	Grievance Redress Committee
GRM	Grievance Redress Mechanism
IA	Implementing Agency
ICB	International Competitive Bidding
IPP	Indigenous Peoples Plan
IPPF	Indigenous Peoples Planning Framework
iRoad	Integrated Road Investment Program
MDB	Multilateral Development Bank
MFF	Multi Tranche Financing Facility
MGC- ECL JV.	MGC- ECL Joint Venture
MOU	Memorandum of Understanding
NCB	National Competitive Bidding
OPRC	Output and Performance based Road Contracts
PC	Provincial Council
PE	Project Engineer
PIC	Project Implementing Consultant
PIU	Project Implementing Unit
PPA	Project Performance Assessment
PPTA	Project Preparatory Technical Assistance
RDA	Road Development Authority

RE	Resident Engineer
RF	Resettlement Framework
RMC	Road Management Contract
ROW	Right of Way
RSA	Road Safety Awareness
SGRS	Social Gender Resettlement Specialist
SP	Southern Province
SPS	Safeguards Policy Statement, 2009 of ADB
STI	Sexually Transmitted Infection
TL	Team Leader
TOR	Terms of Reference

List of Tables

Table 1.1:	CRCs in Galle District	1
Table 1.2:	CRCs in Matara District	2
Table 1.3:	CRCs in Hambantota District	3
Table 2.1:	Compliance with loan conditions (Social safeguards and Gender).....	8
Table 2.2:	Compliance with RF.....	12
Table 2.3:	Compliance with FAM (Social Safeguards).....	13
Table 3.1:	Status of gender composition of staff of the Consultants, Contactors' staff and labour crew in PIC-01 Southern province as at 30 June,2018	17
Table 3.2:	Comparison of gender composition in previous and current review periods.....	19
Table 4.1:	Status of civil work implementation as at 30 June, 2018	22
Table 4.2:	Establishment of Grievance Redress Committees	23
Table 4.3:	Classified summary of Public Grievances, Requests, Suggestions and Complaints	26
Table 4.4:	Number of GRC meetings held (January – June, 2018)	29
Table 4.5:	Solutions given for Complaints at grassroots, GND, DSD and PC levels.....	30
Table 4.6:	Design changes made to the original design of roads due to public requests...	31
Table 4.7:	Cost invested to respond Public Requests – Galle District	32
Table 4.8:	Cost invested to respond Public Requests – Matara District	33
Table 4.9:	Cost invested to respond Public Requests – Hambantota District	34
Table 4.10:	Cooperate Social Responsibility (CSR) Programmes conducted	36
Table 4.11:	Workshops conducted during the period.....	37
Table 5.1:	Confirmation of land donation –Consent letters.....	43
Table 8.1:	Summary of cost invested to accommodate Public Requests	52

List of Figures

1.1:	Overall organization chart for PMU, iRoad, RDA	5
5.1:	Written confirmation of Land Donation.....	42

List of Graphs

Graph 4.1:	Status of public Grievances, Requests, Suggestions and Complaints – Galle District	27
Graph 4.2:	Status of public Grievances, Requests, Suggestions and Complaints – Matara District	27
Graph 4.3:	Status of public Grievances, Requests, Suggestions and Complaints – Hambantota District	28
Graph 4.4:	Status of public Grievances, Requests, Suggestions and Complaints – Southern Province	28

List of Maps

Map 1.1:	Locations of 203.8km (66 nos.) roads in Galle District	2
Map 1.2:	Locations of 220.1km (66 nos.) roads in Matara District	3
Map 1.3:	Locations of 167.0km (51 nos.) roads in Hambantota District	4

List of Pictures

Picture 01	Public consultation at Contract Package M1, Matara District	7
Picture 02	Women at office work, Team Leader's office, Matara District	18
Picture 03	Women workers involved in civil work at the site- Akuressa ketanvila Rd. ID 04, Contract Package M2, Matara District	19
Picture 04	Divisional Secretary (DS) office assists in settling payments for house cracks. Weligama DS office, Contract Package M3, Matara District	20
Picture 05	Women actively participated at CSR programmes - Contract Package M2, Matara District	20
Picture 06	Women in demonstration at safety workshop on PBM in Matara District	20
Picture 07	Completed road in Contract Package M3, Matara District	22
Picture 08	Completed road in Contract Package H1, Hambantota District	22
Picture 09	Complaint box installed at Contractor's office. Contract Package H2, Hambantota District	24
Picture 10	Office of Grama Niladhari, Kotawila- North, Contract Package M3, Matara District	25
Picture 11	A GRC meeting at GN level – Contract Package M2, Matara District	30
Picture 12	Tree Planting program, Contract Package M2, Matara District	36
Picture 13	Workshop on Integrating Gender Perspective into Analysis and Planning in the Transport Sector, held on 12.06.2018- Galle District	39
Picture 14	Preliminary discussion on implementation of Socio – Economic Impact Assessment Survey-2018 at ADB country office	40
Picture 15	Orientation workshop for conducting Socio – Economic Impact Assessment Survey-2018	40
Picture 16	Administering the questionnaire with a Householder, Contract Package M3, Matara District	41
Picture 17	Progress monitoring meeting conducted by chief secretary at chief secretariat office, Southern Province	44
Picture 18	Involvement of Religious leaders in settling public issues – Contract Package M2, Matara	44
Picture 19	Officers of health department involving at CSR programs Contract Package M1, Matara District	45
Picture 20	Community helps in sharing indigenous knowledge in project activities- Contract Package G2, Galle District	45
Picture 21	Progress monitoring meeting conducted by TL – PIC-01 at TL office, Matara	47
Picture 22	Progress monitoring at Contract Package H1, Hambantota District	47
Picture 23	SGRS monitors the maintenance of records related to public complaints – Contract Package M3, Matara District	47

Picture 24	Monitoring visit by ESDD, RDA at Human Trafficking workshop, TL office, Matara District	48
Picture 25	Mr. Saranga Gajasinghe, CSD & Safeguards coordination specialist of TA8473 in Contract Package M1, Matara District	48
Picture 26	Field monitoring visit of CSD & Safeguards Coordination Specialist of TA8473 in Contract Package M3, Matara District	49
Picture 27	Team Leader PIC-01, Addresses the ADB mission meeting – RE office, Galle District	49
Picture 28	Social, Gender and Resettlement Specialist PIC-01, Addresses the ADB mission meeting – RE office, Galle District	50
Picture 29	ADB Mission members at document desk- RE office, Galle District	50
Picture 30	ADB mission made a monitoring visit - Contract Package G2, Galle District	51

1. INTRODUCTION

1.1 Background of the Project

The ADB's Multi- Tranche Financing Facility (MFF) for the Integrated Road Investment Program (iRoad), provides loans to Sri Lanka in an aggregate amount of up to \$ 800 million equivalents. The GOSL will provide counterpart financing of \$106 million for feasibility study and engineering, tax and duties, and part of the contingency. The MFF will comprise a series of loans, to improve the access routes between rural areas and socioeconomic centers, in tranches. The investment program comprises five projects to be implemented between 2014 and 2024. Project 1 is in Southern Province with an estimated cost of \$235 million. Tranche 1 financed the first slice of Project 1 in Southern Province amounting to \$118 million, with ADB financing \$100 million and GOSL providing the balance \$18 million in counterpart funds. Subsequence loan slices provided funds for continuation of the civil works in SP.

PIC-01 in Southern Province will improve and maintain 560 km of rural access roads and 20 km of national roads under CRCs. The rural access roads will be improved to all-weather standards, and be maintained for three years. The national roads will connect the rural access roads to adjacent socioeconomic centers. Under a separate Slice of Project 1 about 110 km of national road corridor will be improved and maintained under RMCs based on OPRC for seven years.

Part of the funds from the MFF will be used for providing consulting services for project implementation including construction supervision, supervision of post construction maintenance work, contract management, and other implementation activities.

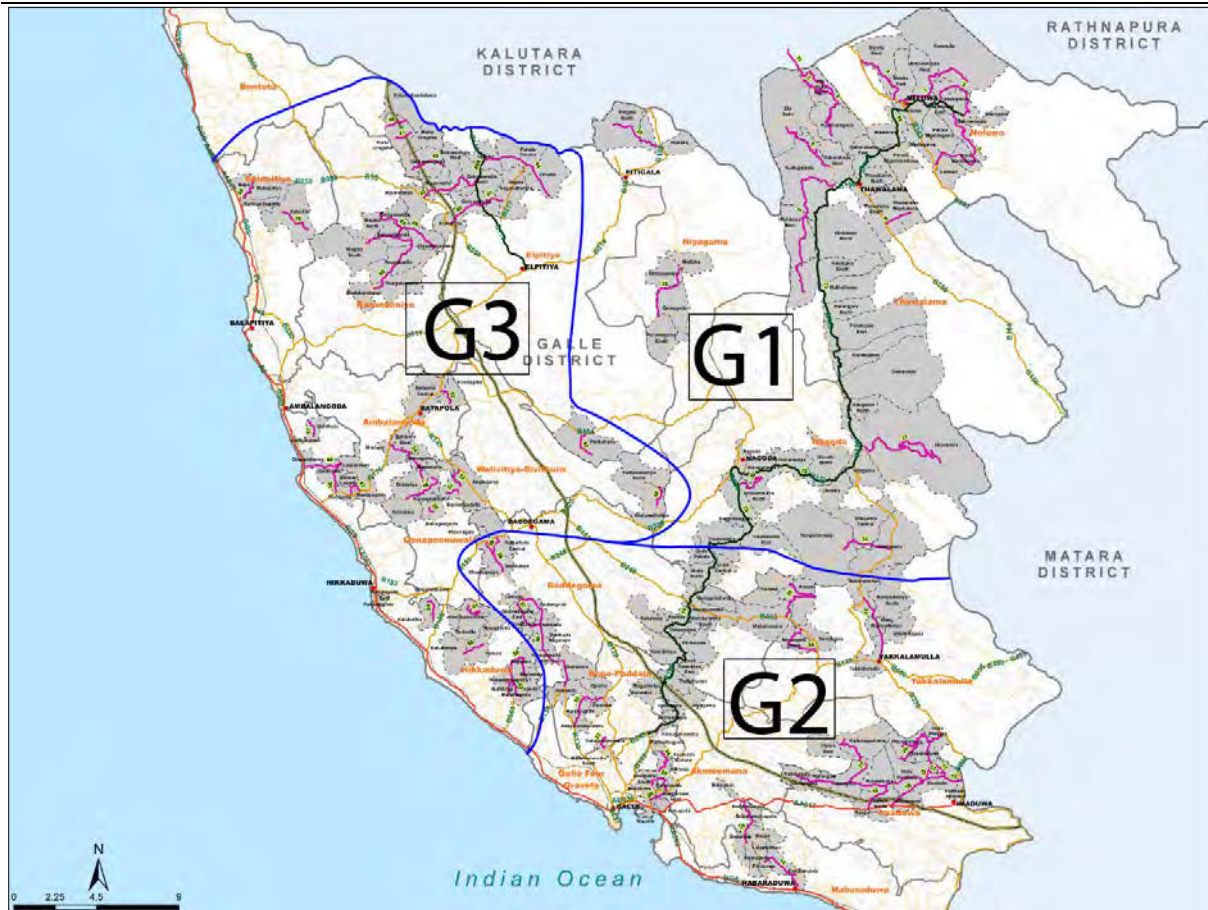
The Executing Agency of the Integrated Road Investment Program (iRoad) is Ministry of Highways and Road Development and the Implementing Agency is the Road Development Authority.

The three (3) CRCs in Galle District are listed in Table 1.1

Table 1.1 :CRCs in Galle District

No.	Contractor	Accepted Contract Amount (LKR)	Commencement Date	RDA (km)/ (nos.)	PRDA (km)/ (nos.)	PRDA & PS (km)/ (nos.)	PS (km)/ (nos.)	Total (km) /(nos.)
G1	K. D. Ebert & Sons Holdings(Pvt) Ltd	1,458,055,706.14	18.05.2015	-	2.8/1	-	61.8/14	64.6/15
G2	K. D. A. Weerasinghe & Co(Pvt) Ltd	1,483,136,252.40	18.05.2015	-	15.7/3	3.0/1	47.3/18	66.0/22
G3	K. D. A. Weerasinghe & Co(Pvt) Ltd	1,733,440,933.20	18.05.2015	9.4/1	2.2/1	15.5/3	46.1/24	73.2/29
Sub Total Galle District		4,674,632,891.74	-	9.4/1	20.7/5	18.5/4	155.2/56	203.8/66

The locations of the 203.8km (66 nos.) roads in Galle District are shown in Map1.1 below .



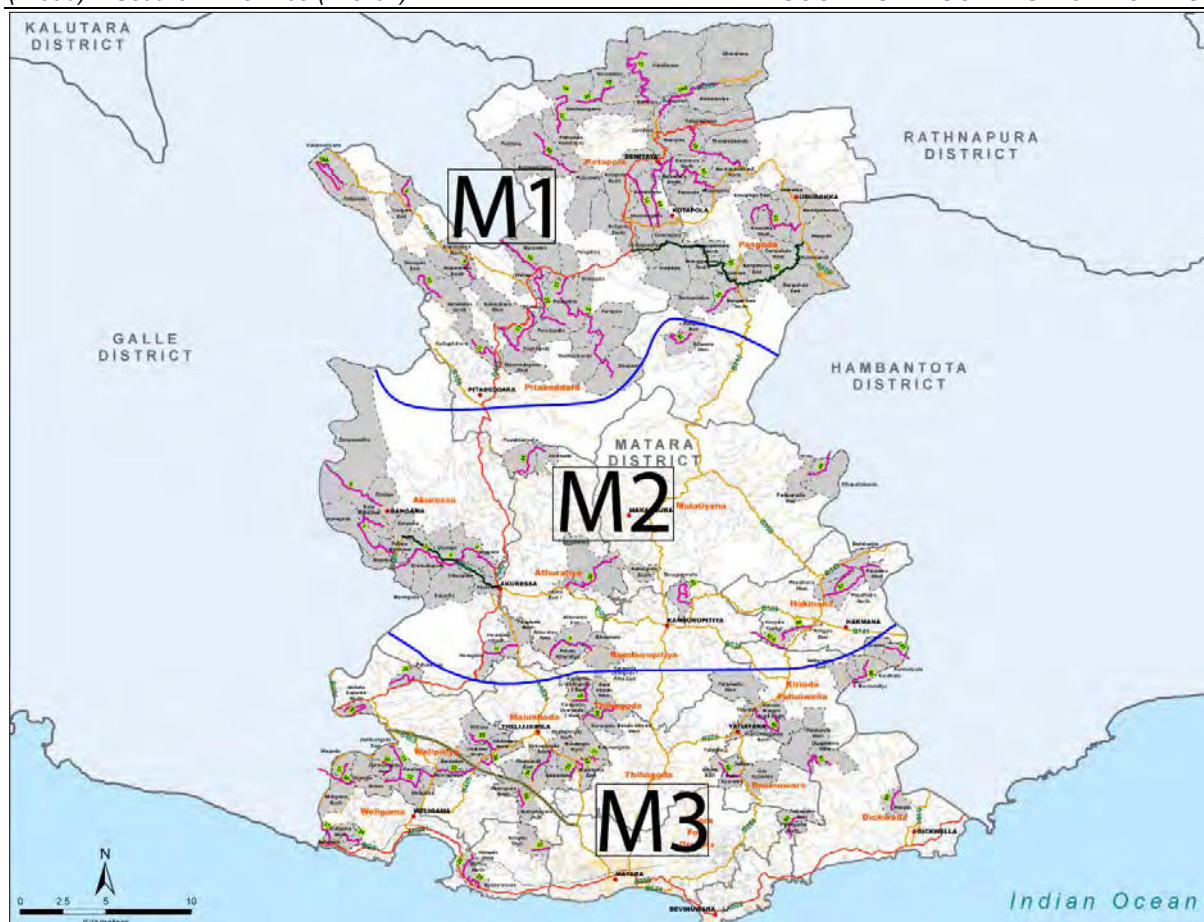
Map1.1: Locations of 203.8 km (66 nos.) roads in Galle District

The three (3) CRCs in Matara District are listed in Table 1.2

Table 1.2 :CRCs in Matara District

No.	Contractor	Accepted Contract Amount (LKR)	Commencement Date	RDA (km)/ (nos.)	PRDA (km)/ (nos.)	PRDA & PS (km)/ (nos.)	PS (km)/ (nos.)	Total (km) /(nos.)
M1	CML-MTD Construction Ltd	2,315,346,953.44	18.05.2015	6.3/1	29.4/5	-	61.8/16	97.5/22
M2	K. D. Ebert & Sons Holdings (Pvt) Ltd	1,803,301,712.60	18.05.2015	7.2/1	11.3/2	-	50.7/16	69.2/19
M3	K. D. Ebert & Sons Holdings (Pvt) Ltd	1,207,599,780.58	18.05.2015	-	4.8/2	-	48.6/23	53.4/25
Sub Total Matara District		5,326,248,446.62	-	13.5/2	45.5/9	-	161.1/55	220.1/66

The locations of 220.1km (66 nos.) roads in Matara District are shown in Map1.2 below .



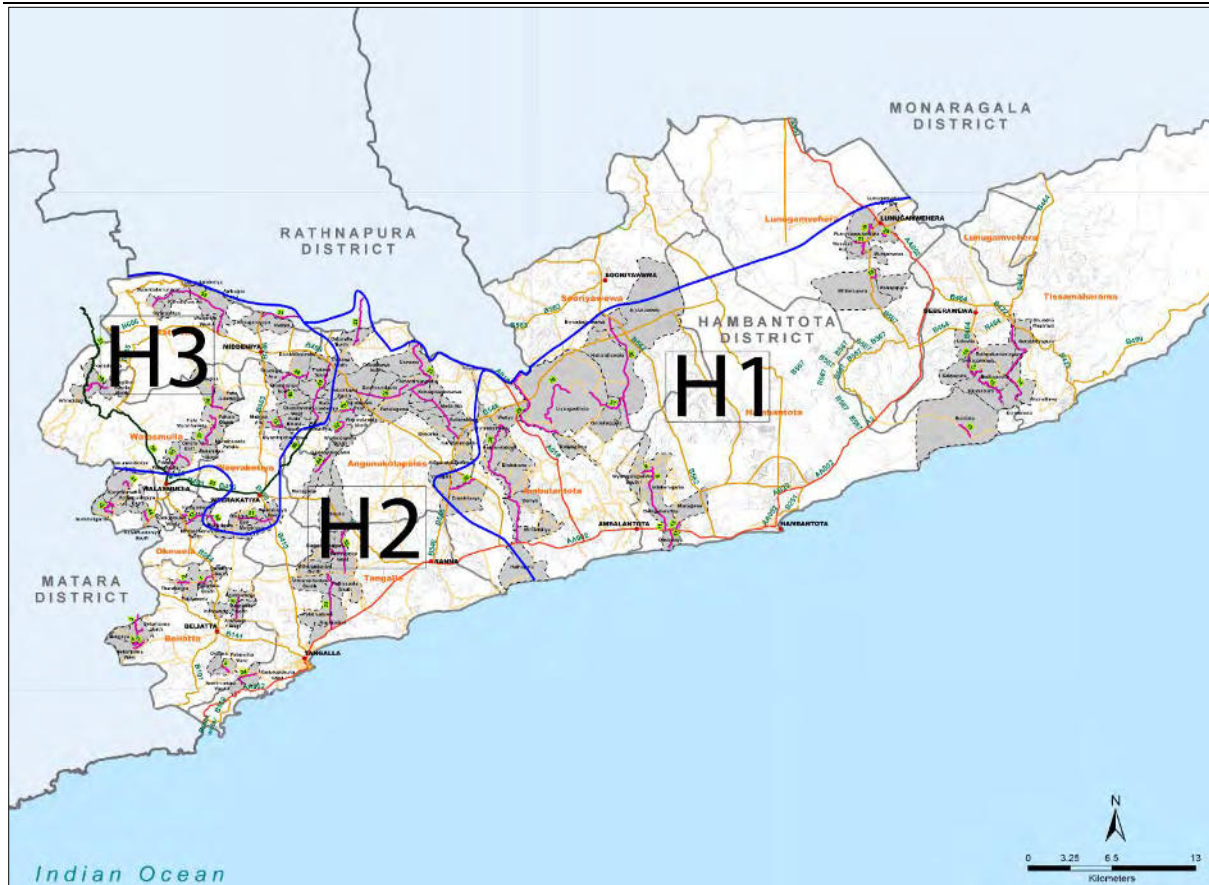
Map1.2: Locations of 220.1km (66 nos.) roads in Matara District

The three (3) CRCs in Hambantota District are listed in Table 1.3.

Table 1.3 :CRCs in Hambantota District

No.	Contractor	Accepted Contract Amount (LKR)	Commencement Date	RDA (km)/ (nos.)	PRDA (km)/ (nos.)	PRDA & PS (km)/ (nos.)	PS (km)/ (nos.)	Total (km) /(nos.)
H1	K. D. A. Weerasinghe & Co (Pvt) Ltd	1,583,594,552.40	18.05.2015	-	19.3/4	-	47.8/15	67.1/19
H2	CML-MTD Construction Ltd	1,210,330,393.84	18.05.2015	-	15.6/1	-	42.4/17	58.0/18
H3	RR Construction (Pvt) Ltd	1,052,141,503.89	18.05.2015	-	8.8/1	-	33.1/13	41.9/14
Sub Total Hambantota District		3,846,066,450.13	-	-	43.7/6	-	123.3/45	167.0/51

The locations of 167.0km (51 nos.) roads in Hambantota District are shown in Map1.3 below .



Map1 3: Locations of 167.0km (51 nos.) roads in Hambantota District

1.2 Consulting Services Contract

MGC- ECL JV is the Project Implementing Consultants (PIC) for Southern Province.

Mobilization of PIC – 01 was on 5th June 2015.

1.3 Scope of the PIC services

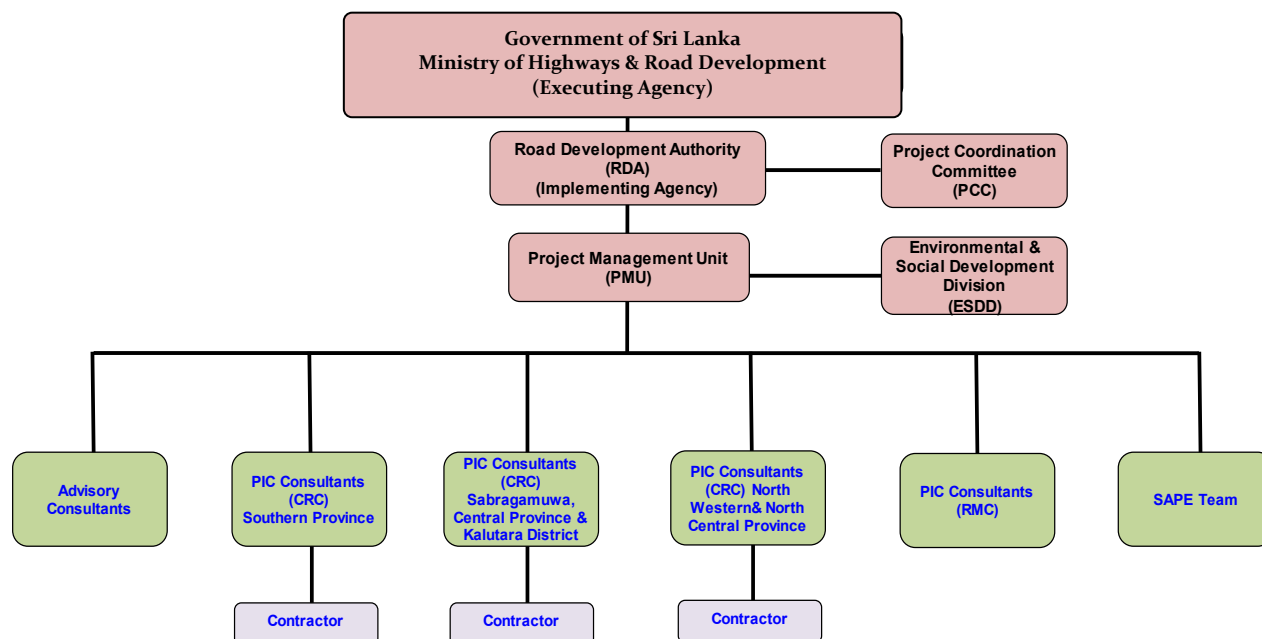
The main task of PIC-01 (CRC) is to assist RDA in supervising and/or implementing the civil works in the CRC component of the iRoad investment program:

The scope of the PIC services and resulting tasks in the TOR fall under the following six broad components:

- a. Contract Administration based on the FIDIC Conditions of Contract MDB Harmonized Edition (June 2010)
- b. Review and approve contractors detailed designs and the cost for each civil work contract
- c. Safeguard Compliance Monitoring
- d. Project Performance and Monitoring Survey
- e. Prepare and Implement local and overseas capacity development program for IA Staff
- f. Reporting Requirements

1.4 Overview of Institutional Framework

The Executing Agency (EA) of the iRoad Investment Program is Ministry of Highways and Road Development (MOHRD), and the Implementing Agency (IA) is the Road Development Authority (RDA). Three Project Implementation Consultants (PIC) are to be engaged for the CRC component and one PIC for the RMC component. The overall project organization chart is shown below;



PIC(CRC) - Project Implementation Consultants for Conventional Road Contracts
PIC(RMC) - Project Implementation Consultants for Road Management Contracts
SAPE - Survey and Preliminary Engineering

Figure 1. 1 Overall Organization Chart for iRoad Programme

MGC-ECL JV being the PIC-01 services provider has selected a well-qualified and experienced team of professionals to assist the RDA in the successful delivery of iRoad Southern Province.

The consultancy services comprise as follows;

- Team Leader: 30 Staff-Month input of an international Team Leader,
- FIDIC Contracts & Claims Specialist: Six month input of an international on an as required basis,
- 3 x Resident Engineers: 81 national Staff-Month inputs during construction period,
- 2 x Rural Road Design & Safety Engineers: 56 national Staff-Month inputs during construction period
- Structural Engineer: Six national Staff-Month inputs during construction period
- 3 x Materials Engineers: 72 national Staff-Month inputs during construction period
- 3 x Quantity Surveyors: 81 national Staff-Month inputs during construction period
- Environmental Specialist: 30 national Staff-Month inputs during construction period,
- Social/Gender/Resettlement Specialist: 30 national Staff-Month inputs during construction period,
- 3 x Land Surveyors: 72 national Staff-Month inputs during construction period,
- Contracts & Claims Engineer: 30 national Staff-Month inputs during construction period,
- 3 x Assistant Resident Engineers: 72 national Staff-Month inputs during construction period,
- Resident Engineer: 36 Staff-Month during the maintenance period
- Quantity Surveyor: 36 Staff-Month during the maintenance period
- 10 x Engineers: 240 national Staff-Month inputs of non-key experts
- 18 x Technical Officers: 432 national Staff-Month inputs of non-key experts

Further support staff to the Engineer (PIC-01) is provided through the respective CRC Packages, being Administration Manager, Secretary, 2xLab Technician and 2xSurvey Assistant for each CRC Package.

The overall organization chart for the PIC staff including the linkages with RDA PMU counterpart staff is shown in **Annexure 01 - Overall Organization Chart for PIC**.

1.5 Context and purpose of this report

Resettlement Framework (RF) which has been prepared during the Project Preparatory Technical Assistance (PPTA) sets out guidelines and procedures that need to be complied under social safeguards of the project. As per section 10 of RF on “Monitoring and Reporting” it is required to prepare semi-annual monitoring report on the progress of social safeguards compliance of the project on a semi- annual basis.

This report is prepared to serve as the semi- annual monitoring report on social safeguards and the progress of implementing GAP. The reporting period is from **January to June 2018** for PIC-01, Southern Province

Total length of 590.9 km of 183 roads are being rehabilitated/improved under PIC-01 and out of which civil works in progress in 590.7 km of 183 roads as at 30 June, 2018.

2 COMPLIANCE ON SOCIAL SAFEGUARDS REQUIREMENTS

As indicated above the Resettlement Framework (RF) which includes guidance in Social Safeguard has been developed during the Survey and Preliminary Engineering (SAPE) works of the project. The RF provides guidance in selection, screening, categorization, impact assessment, project implementation and monitoring of social safeguards according to requirements of the Government of Sri Lanka as well as the ADB Safeguard Policy Statement (SPS, 2009) for the investment program. As per the guidelines given in RF tranches one, two or any succeeding tranches of iRoad program should adopt the following key social safeguards requirements;

- Selection of roads that fulfill the minimum Right of Way (ROW) requirement, there by avoid land acquisition and involuntary resettlement.
- Avoid acquisition of land and involuntary resettlement through alignment shifts, and modifications in cross-sections to the extent required from safety considerations.
- Carry out meaningful consultations with the public from preliminary design stage so as to make public aware of the project and to obtain inputs from the public/ community to be incorporated in to road designs.
- Ensure that due consultations are carried out with individuals or community and obtain their written agreements in case there is a requirement of additional land for road improvements (as identified during detail design and construction stages).
- Ensure that such land is obtained only through a well-documented “Land Donation Process” as stipulated in the Resettlement Framework for the project.
- Ensure that a Grievance Redress Mechanism (GRM) is in place to address any grievance.
- Ensure gender participation in the project from preliminary design stage through construction and maintenance period.



Picture 01. Public consultation at Contract Package M1, Matara District

2.1 Compliance on Social Safeguards Provisions of the Loan Covenant

The requirements stipulated in the loan conditions of PIC-01 have been or are being complied with as detailed in the below table.

Table 2.1 Compliance with Loan Conditions (Social Safeguards and Gender)

Item/ Section/ Schedule	Description	Status of Compliance
Schedule 5 – Execution of the project; Financial matters	<p><u>Safeguards</u></p> <p>3. The Borrower shall ensure, or cause RDA to ensure, that the Project does not have any Indigenous Peoples Safeguards and Involuntary Resettlement Safeguards impacts, both within the meaning of SPS. In the event that the Project does have any such impact, the Borrower shall take all steps required to ensure that the Project complies with the RF and IPPF, applicable laws and regulations of the Borrower and with SPS.</p> <p>4. The Borrower shall ensure, or cause RDA to ensure, that any voluntary donation of land by beneficiaries for any provincial or rural road is implemented in accordance with the procedures laid out in Appendix 3 of the RF after free, prior and informed consultation and consent of the affected persons, provided that there shall be no voluntary land donation for national roads.</p>	<p>Complied with PIC-01, SP</p> <p>Roads selected for CRC packages (or rural roads) have minimum Right of Way (ROW) not less than 2.5 m. Road improvement works have been carried out within the available road corridors and no widening of existing ROW has been done. Voluntary land donation process as indicated under Appendix 3 of RF has been utilized only at locations where additional strips of land was required to improve road user safety.</p> <p>No any road passing through or close to settlements of indigenous people have been selected in projects appraised under tranche one and two.</p> <p>Road improvement works of CRC packages have/ are being carried out mainly within the available road corridors. However, at certain locations additional small strips of lands from adjacent land lots have been required to improve the road user safety and to develop lead away drains.</p> <p>Obtaining such small land strips have followed the procedures stipulated under appendix 3 of the RF.</p>

Item/ Section/ Schedule	Description	Status of Compliance
Schedule 5 – Execution of the project; Financial matters	<p><u>Human and financial resources to implement safeguards requirements</u></p> <p>5. The Borrower shall make available, or cause RDA to make available, necessary budgetary and human resources to fully implement the SPS, IEE, EMP and any safeguard documents which may be prepared for the Project.</p>	<p>No incident has been recorded of eminent domain or other state power used for taking of additional land strips.</p> <p>The road works have been carried out mainly within the available road corridor and voluntary land donation process has been duly followed at locations where additional land strips has been required.</p> <p>No incident has been recorded of eminent domain or other state power used for taking of additional land strips.</p> <p>Being complied with PIC-01, SP</p> <p>Budgetary allocations are found in the contract documents.</p> <p>A Social Safeguards Officer (SSO) who was attached to PIU (SP) has been transferred to PMU, Colombo. SSO position remains vacant. However, in addition to the Assistant SSO a new Environmental Assistant has been appointed to the PIU, SP</p> <p>A Social, Gender and Resettlement Specialist (SGRS) has been appointed in PIC-01. SGRS of PIC-01 has been assigned with a Social Assistant who is stationed at Team Leader's office.</p>

Item/ Section/ Schedule	Description	Status of Compliance
	<p><u>Safeguards – Related provinces in Bidding documents and works contracts</u></p> <p>6. The Borrower shall ensure, or cause RDA to ensure, that all bidding documents contain provisions that require contractors to:</p> <p>(a) comply with the measures relevant to the contractor set forth in any safeguards document, and any corrective or preventative actions set forth in the Safeguards Monitoring Report;</p> <p>(b) make available a budget for all such safeguard measures; and</p> <p>(c) provide the Borrower with a written notice of any unanticipated environmental, resettlement or small ethnic community peoples' risks or impacts that arise during construction, implementation or operation of the Project that were not considered in the IEE, EMP and any other safeguard plans.</p> <p><u>Safeguards monitoring and reporting</u></p> <p>7. The Borrower shall do the following or cause RDA to do the following:</p> <p>(a) submit annual Safeguards Monitoring Reports to ADB and disclose relevant information from such reports to affected persons promptly upon submission;</p> <p>(b) if any unanticipated environmental and/or social risks and impacts arise during construction, implementation or operation of the Project that were not considered in the IEE, EMP, and any safeguard documents, promptly inform ADB of the occurrence of such risks or impacts, with detailed description of the event and proposed corrective action plan; and</p> <p>(c) report any actual or potential breach of compliance with the measures and requirements set forth in the IEE, EMP and any safeguard Documents promptly after becoming aware of the breach.</p>	<p>Complied with PIC-01, SP</p> <p>PIC-01 has been categorized as 'Category B' on Involuntary Resettlement and 'Category C' on Indigenous Peoples safeguards in accordance with SPS.</p> <p>No incident of physical or economical displacement has been reported during civil works of CRC packages under PIC-01</p> <p>Being complied with PIC-01, SP</p> <p>The PIC-01 has prepared and submitted Semi-annual progress reports on social safeguards compliance as follows;</p> <p>So far PIC-01 has compiled five reports as:</p> <p>July – December, 2015, January – June, 2016, July – December, 2016, January – June, 2017, July – December, 2017;</p> <p>No any unanticipated social risks and impacts or cases of physical/ economic displacement including involuntary resettlement have arisen during construction, implementation or operation of the projects.</p> <p>No any actual or potential breach of compliance on social safeguards were observed or reported during the reporting period under PIC-01</p>

Item/ Section/ Schedule	Description	Status of Compliance
Schedule 5 – Execution of the project; Financial matters	<u>Prohibited List of Investments</u>	Being complied with PIC-01, SP
	8. The Borrower shall ensure, or cause RDA to ensure, that no proceeds of the Loan are used to finance any activity included in the list of prohibited investment activities provided in Appendix 5 of the SPS.	No incident was observed or reported where any proceeds of the loan has been used for any activity listed under the list of prohibited investment activities during the reporting period.
	<u>Labour standards</u>	Being complied with PIC-01, SP
	9. The Borrower shall ensure that (a) all contractors under the Project comply with all applicable labor laws and regulations, do not allow employment of child labor for Project activities, encourage the employment of the poor, particularly women, and provide appropriate facilities for women and children in work sites; (b) people directly affected by the Project are given priority to be employed by the Project; (c) contractors do not differentiate wages between men and women for work of equal value; and (d) Specific clauses ensuring these shall be included in the contracts.	Specific contract clauses have been included in Bidding documents of all CRC packages to avoid discrimination of labour, employment of child labour and to encourage women labour.
	<u>Performance monitoring (Loan agreement PIC-01)</u>	Complied with PIC-01, SP
	18. The Borrower shall cause, within 3 months of effectiveness of the first loan under the Facility, MOHPS and RDA to establish baseline for performance indicators to be used for monitoring implementation of each project under the Facility.	PIC-01 has compiled the baseline standards (including baseline standards on socioeconomic aspects) as required in the Project Performance Monitoring System (PPMS). The TA consultant for CSD and Safeguards and Environment and Social Development Division (ESDD) of RDA assisted the PICs in completing this tasks. The documents have been submitted to ADB.

2.2 Compliance with Requirements in the Resettlement Framework (RF)

Initial selection of rural and truck roads has been carried out based on the information gathered through district secretariats, divisional secretaries and civil societies. These roads have been then inspected to verify the availability of land (i.e. Right of Way). Other requirements stipulated in the RF have been or are being complied with as detailed in the below table.

Table 2.2 Compliance with RF

Item/ Section/ Schedule	Description	Status of Compliance
A. Background	<p>Rural Roads</p> <p>Paragraph 4: For the rural roads there will be three contract packages per district. The contractor will be responsible for construction of the road over 2 years and performance based maintenance for another 3 years. For the rural roads the improvements will be undertaken completely within the existing right of way (ROW) which is between 2.5m to 5.5m. Rehabilitation works will include improving pavements/road surface, construction of side drains and embankments, and improvement of culverts, cause ways and bridges.</p>	<p>Complied with PIC-01, SP</p> <p>No road having an average ROW less than 2.5 m was selected. Locations where improvements to road structures and safety needs have been highlighted in transect walk records.</p> <p>All road improvement works are being carried within the available ROW. Voluntary land donation process has been duly followed to obtain small strips of land from adjoining lots where required (for the purposes of road safety).</p>

2.3 Compliance to the Social Requirements under the Project Facility Administration Manual (FAM)

The requirements stipulated in the updated Facility Administration Manual (FAM) of 15 March 2018 of iRoad program have been or are being fulfilled. Details of each item is summarized in below table.

Table 2.3 - Compliance with FAM (Social Safeguards)

Item/ Section/ Schedule	Description	Status of Compliance
VII Safeguards	<p>B. Involuntary Resettlement</p> <p>Paragraph 57. Tranches 1 and 2. Both tranches are classified as category B in accordance with ADB's SPS. The improvement of all project roads will be carried out within the existing alignment with no widening. However, for the 7-year road management contract of selected national roads, the resettlement impact might be encountered at a late stage.</p> <p>Paragraph 58. Tranches 3 and 4. Both tranches are classified as category B in accordance with ADB's SPS following the same categorization as the previous tranches.</p>	<p>Complied with for all projects appraised under PIC-01.</p> <p>A land acquisition due diligence was undertaken for all roads and did not identify any significant and permanent impact on land, structures, private trees, or community resource properties. Social impact assessment comprising at least 20% households and focused group discussions were also conducted during Survey and Preliminary Engineering works of roads selected under PIC-01</p>
VII Safeguards	<p>Pre-construction</p> <p>Paragraph 59: The RDA, supported by its ESDD and context-sensitive design (CSD) consultants, will be responsible for conducting a transect walk for each rural road, during which the community will be consulted on how to (i) minimize construction impact, (ii) identify and minimize social and environment impacts, and (iii) integrate road safety design. The community will also be briefed about the grievance redresses mechanism. The results from the transect walk (report and map) will be submitted to the civil works contractor who will reconfirm the ground realities and integrate feasible features into the Level-1 final design. The PIC will review the final design.</p> <p>Construction and maintenance</p> <p>Paragraph 60: During the construction phase, the PICs will be responsible for conducting semi-annual onsite social safeguard monitoring. During the maintenance phase, the PICs will be responsible for conducting annual onsite social safeguard monitoring. The PICs should pay close attention to</p>	<p>All improvements of rural roads under CRC packages are carried out within the available road corridor or ROW. No permanent physical or economic displacement leading to involuntary resettlement has NOT occurred during implementation of PIC-01</p> <p>Complied in with during SAPE works of roads appraised under PIC-01</p> <p>Transect walk surveys and public consultations were conducted in all rural roads selected under PIC-01. This information has been submitted to respective civil works contractors, who has reconfirmed the ground realities and</p>

Item/ Section/ Schedule	Description	Status of Compliance
VII Safeguards	<p>ensuring that all grievances are addressed in a timely manner. Reporting templates can be found in the resettlement framework.</p> <p>Preparation of subsequent tranches or unanticipated impact Paragraph 61: A resettlement framework has been prepared to guide the preparation of all tranches. For the preparation of the subsequent tranche, the PICs will carry out due diligence on the ongoing tranches.</p>	<p>integrated feasible features in to level 1 design. PIC-01 has reviewed and approved such designs.</p> <p>PIC-01 with respective PIU, Contractor staff are conducting regular onsite monitoring of social safeguards compliance. ESDD of RDA and the TA consultant also conduct periodic onsite visits to monitor the implementation of social safeguards practices by PIU, PIC and contractors.</p> <p>PIC-01 on behalf of PIU has prepared and submitted semi-annual monitoring reports on safeguards compliance. Summary of the reports submitted up to December, 2017 is as follows;</p> <p>PIC-01 has compiled five reports as: July – December, 2015, January – June, 2016, July – December, 2016, January –June, 2017, July – December, 2017;</p>
	<p>C. Indigenous Peoples</p> <p>Paragraph 63: For tranches 1 and 2, no indigenous people were identified during due diligence, and both tranches are accordingly categorized as C per ADB's SPS. Tranches 3 and 4 will continue to finance the subprojects identified in the two earlier tranches; therefore, both tranches will follow the categorization of C. In case any adverse impacts are identified during implementation, the RDA will ensure that the indigenous peoples plan (IPP)</p>	<p>During the implementation stage (i.e. during civil works of the five projects) no settlements or activities of Indigenous Peoples (IP) were observed or reported near any road considered under PIC-01.</p>

Item/ Section/ Schedule	Description	Status of Compliance
	is prepared in accordance with the IPPF, and the IPP is reviewed and approved by ADB before commencement of the relevant section of the civil works contract.	
	<p>D. Grievance Redress Mechanism</p> <p>Paragraph 64: The Grievance Redress Mechanism (GRM) will be established consistent with the requirements of the EARF. Grievances from the affected people on social and environmental issues during project implementation will be addressed mainly through the existing local administrative system. Depending on the nature and significance of the grievances or complaints, grievances will be addressed at three levels: (i) at the grassroots level where complaints will be directly received and addressed by the contractor, the PIC or PIU representative onsite; (ii) grievances that are simple but still cannot be addressed at the grassroots level will be addressed at the Grama Niladhari division level; and (iii) more complex grievances that cannot be addressed at the Grama Niladhari division level will be addressed at the Divisional Secretariat level. There will be a grievance redress committee at both the Grama Niladhari division and Divisional Secretariat levels.</p>	<p>PIC-01: Southern Province</p> <p>Grievance Redress Committees (GRCs) at DS level and GN level have been established for all CRC packages.</p>
VIII Gender and social dimensions	<p>A. Gender and Development</p> <p>Paragraph 65: Tranches 1, 2, 3, and 4 are categorized as effective gender mainstreaming (EGM). During the preparation of tranches 1 and 2, separate gender action plans (GAP) were formulated since the two tranches cover different geographical areas. During the preparation of tranches 3 and 4, the GAP for the entire investment program was formulated (Table 17) since the entire scope of the investment program is now defined, and subsequent tranches will finance the subprojects that were appraised in the first two tranches.</p> <p>Paragraph 66: To ensure that all gender issues are addressed, a social development and gender expert will be engaged by each of the two project implementation consultants, with a total input of 57 person-months of</p>	<p>One consolidated GAP has been prepared for the entire investment program</p> <p>PIC-01 has appointed a full time Social, Gender and Resettlement Specialist (SGRS). SGRS of PIC-01 has been assigned with a Social Assistant who is stationed at Team Leader's office.</p> <p>ESDD/ RDA is monitoring the implementation of requirements of the GAP in each province.</p>

Item/ Section/ Schedule	Description	Status of Compliance
	services, to implement and monitor the GAP. A gender focal officer will be assigned in each of the project implementation units. Semi-annual monitoring of the GAP shall be prepared and submitted to ADB for disclosure.	The semi-annual report prepared on social safeguards by PIC-01 has included a separate section on implementation of GAP.
	B. HIV and AIDS Paragraph 68: The RDA will ensure that all civil works contractors complete the following: (i) carry out awareness programs for labor on the risks of sexually transmitted diseases/AIDS and human trafficking, and (ii) disseminate information at worksites on the risks of sexually transmitted diseases and HIV/AIDS as part of health and safety measures for those employed during construction. Contracts for all subprojects will include specific clauses on these undertakings and compliance will be strictly monitored by the RDA, with the support of construction supervision consultants during project implementation.	CRC package contractors with the assistance of PIC-01 has conducted HIV /AIDs prevention and Health awareness programs. Details of the progress of these workshops are discussed separately.
	C. Health Paragraph 69: The RDA shall ensure that contractors provide adequately for the health and safety of construction workers and further ensure that bidding documents include measures on how contractors will address this, including an information and awareness raising campaign for construction workers on sexually transmitted diseases, HIV/AIDS, and human trafficking.	Awareness programs on safety including use of Personal Protective Equipment (PPE) are being held at field staff level.
	D. Labor Paragraph 70: The project construction is expected to generate employment opportunities for local communities during the construction and maintenance phases. Men and women will be paid equally for equal work. Provisions are in the bidding documents for the contractors to ensure that all the civil works comply with core labor standards (e.g. no child labor; no bonded labor; no work discrimination regardless of gender, race, and ethnicity; and freedom of association and collective bargaining). Targets for employing women for construction and maintenance have been established in the GAP. The project implementation consultant will monitor the provisions.	Details of implementing labour laws and requirements are discussed separately.

3 COMPLIANCE WITH RESPECT TO GENDER ACTION PLAN

Integrated Road Investment Program has been categorized as Effective Gender Mainstreaming (EGM) project. Thus a Gender Action Plan (GAP) has been developed for the program. Gender mainstreaming activities include (i) ensuring that at least 40% women are consulted in the final design of rural access roads, (ii) integrating safety and elderly-women-children-disabled friendly features, (iii) employing at least 30% local women for road maintenance and ensure equal wages for equal work, (iv) providing training in routine road maintenance to all employed women, and (v) encourage women's participation in road safety, STI and human trafficking awareness campaigns. To ensure that these and other gender issues are addressed and complied with, the PIC team is included with a full time Social, Gender and Resettlement (SGR) Specialist. ESDD of RDA has the overall responsibility in implementing the GAP, while the PIC support in monitoring the implementation.

3.1 Gender involvement in Cooperate Social Responsibility (CSR) programs

The total number of CSR programs conducted were 09 during the period under review in the Southern Province. The number of female beneficiaries were 249 out of the total number of 412 beneficiaries attended for the above programmes conducted during January to June, 2018. The average percentage of 37.67 beneficiaries were female from the total participants attended to the Cooperate Social Responsibility (CSR) programs conducted in Galle, Matara and Hambantota during the period under review (Annexure 03).

3.2 Staff and labour involvement

Complying with other requirements of GAP during construction stage include training and participation of women labour. Below section discusses the actions taken by Contractor and PIC on this matter.

Table 3.1 - Status of gender composition of staff of the Consultants, Contactors' staff and labour crew in PIC-01 Southern province as at 30 June, 2018

Working Location		Gender		Total Nos.	Female Percentage %
		Male	Female		
TL Office	Matara	08	05	13	38.46
RE Offices	Galle (G)	04	03	07	42.85
	Matara (M)	05	04	09	44.44
	Hambantota (H)	04	02	06	33.33
ARE Offices	G1	07	02	09	22.22
	G2	07	03	10	30.00
	G3	05	04	09	44.44
	M1	07	04	11	36.36
	M2	06	03	09	33.33
	M3	07	03	10	30.00
	H1	07	03	10	30.00
	H2	06	01	07	14.28
	H3	01	00	01	00.00
	G1	29	06	35	17.14

Contractor's Offices	G2	06	06	12	50.00
	G3	34	05	39	13.82
	M1	20	08	28	29.57
	M2	38	11	49	22.45
	M3	14	12	26	46.15
	H1	19	04	23	17.39
	H2	06	02	08	25.00
	H3	01	00	01	00.00
Contractor's Work Sites	G1	81	05	86	05.81
	G2	57	03	60	05.00
	G3	119	08	127	06.29
	M1	140	00	140	00.00
	M2	49	21	70	30.00
	M3	39	01	40	02.50
	H1	60	07	67	10.45
	H2	11	00	11	00.00
	H3	06	00	06	00.00
Total		803	136	939	14.48



Picture 02. Women at office work, Team Leader's office, Matara

As per the status of gender composition of the Consultants and Contractors' staff & labour crew in PIC-01 Southern Province, it was able to enhance the female contribution to the construction and office works by 0.96% with compared to the previous period under review.

The staff of Contractors and Consultants has been gradually reduced proportionately based on the progress of construction works in Hambantota district. The civil works in H2 and H3 Contract Packages have been completed whereas civil works in H1 Contract Package is at nearing completion.

Table 3.2- Comparison of gender composition in previous and current review periods

Working Location	As at	Male	Female	Total Nos.	Female Percentage
Consultant's staff	31.12.2017	103	36	139	26.89%
	30.06.2018	74	37	111	33.33%
Contractor's Offices	31.12.2017	253	57	310	18.34%
	30.06.2018	167	54	221	24.43%
Contractor's Work Sites	31.12.2017	648	64	712	08.98%
	30.06.2018	562	45	607	07.41%
Total	31.12.2017	1004	157	1161	13.52%
	30.06.2018	803	136	939	14.48%



Picture 03. Women workers involved in civil work at the site- Akuressa ketanvila Rd. ID 04, Contract Package M2, Matara District

3.3 Public & Private Sector Involvement



Picture 04. Divisional Secretary (DS) office assists in settling payments for house cracks. Weligama DS office, Contract Package M3, Matara District



Picture 05. Women actively participated at CSR programmes - Contract Package M2, Matara District

3.4 Women participate actively at training workshops



Picture 06. Women in demonstration at safety workshop on PBM in Matara District

3.5 Elderly- Women- Children- Disabled (EWCD) Friendly Design

Section VIII of Facility Administration Manual (FAM) is on gender and social dimensions. Paragraphs 65, 66 and 67 of this section describes the gender aspects related to the project. Table 25 under this section presents the Gender Action Plan (GAP) developed for iRoad program. Items 1.1 and 1.2 of this GAP is on addressing road safety and EWCD friendly features in detailed design. Through the design process, it was able to build up close relationship with communities in the project area by identifying the need of vulnerable groups and serving them with benefits.

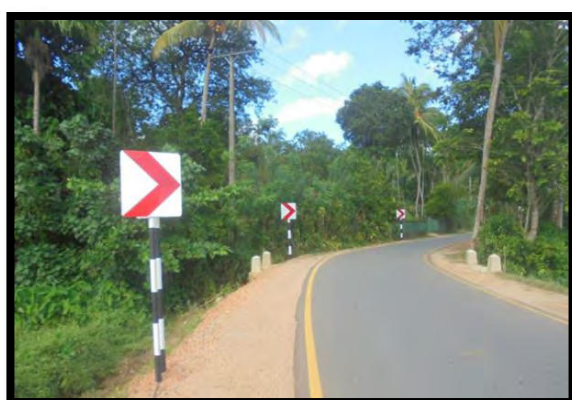
4 SOCIAL SAFEGUARDS ISSUES AND MITIGATION MEASURES IMPLEMENTED

4.1 Status of civil work implementation in PIC-01, Southern Province

Total length of 590.9 km of 183 roads are being rehabilitated/improved under PIC-01 and out of which civil works in progress in 590.7 km of 183 roads as at 30 June, 2018. Details of overall progress of civil works are shown in the table below;

Table 4.1 Status of civil work implementation as at 30 June, 2018

Contract Package	Contractor	Accepted Contract Amount/ (Rs. Million)	No. of Roads	Road Length/ (Km)	No. of Roads; Civil Works in Progress	Asphalt Completed / (Km)	No. of roads handed over for PBM	Physical Progress as at 30 June 2018 Actual (%)
G1	K.D.Ebert & Sons Holdings (Pvt.) Ltd	1,458	15	64.6	15	49.1	01	76.0
G2	K.D.A. Weerasinghe & Co (Pvt) Ltd	1,483	22	66.0	22	66.0	22	100.0
G3	K.D.A. Weerasinghe & Co (Pvt) Ltd	1,733	29	73.2	29	73.2	18	99.5
M1	CML-MTD Construction Ltd	2,315	22	97.5	22	97.5	21	99.5
M2	K.D.Ebert & Sons Holdings (Pvt.) Ltd	1,803	19	69.2	19	56.0	02	84.0
M3	K.D.Ebert & Sons Holdings (Pvt.) Ltd	1,208	25	53.4	25	53.4	25	100.0
H1	K.D.A. Weerasinghe & Co (Pvt) Ltd	1,584	19	67.1	19	67.1	17	96.5
H2	CML-MTD Construction Ltd	1,210	18	58.0	18	58.0	18	100.0
H3	R.R Construction. (Pvt.) Ltd	1,052	14	41.9	14	41.9	14	100.0
Total		13,847	183	590.9	183/ (590.9km)	562.2 (95.1%)	138	95.1



Picture 07. Completed road in Contract Package M3, Matara District



Picture 08. Completed road in Contract Package H1, Hambantota District

4.2 Issues and mitigation measures implemented

4.2.1 Adopting the concept of Context Sensitive Design (CSD).

As per to the ADB's Safeguards Policy Statement (SPS 2009), national laws and policies, any development for the country should not leave a set of people negatively affected in economic or physical terms. As this project is linked with the rural population, it is best to develop a system where participation of community is considered at various stages of the project. Such approach enables to ensure the sustainability of the project facilities provided. In considering the fact that the involvement of all relevant stakeholders is of prime necessity, the project has adopted the concept of Context Sensitive Design (CSD) which provides a basis for shared vision and work to achieve early consensus. CSD recognizes that roadways must be carefully engineered to move traffic efficiently and safely; it asserts that these goals can be achieved without sacrificing the unique qualities of the community they intend to serve. All the designs have been completed and CSD was considered where possible.

4.2.2. Grievance Redress Mechanism

Grievance Redress Mechanism (GRM) has been established as per the guidelines stipulated in the RF. And the due process had been followed when revising, recording and resolving any issue

4.2.2.1 Establishment of GRCs at Grama Niladhari Division (GND) Level & Divisional Secretariat Division (DSD) level

All GN and DS level GRCs were completed during the previous reporting period.

4.2.2.2 Grievance Redress Committees (GRCs)

As shown in the below table 4.2 all 45 GRCs at Divisional Secretary (DS) level and 228 GRCs at Grama Niladhari (GN) level have been established by 30 June, 2018.

Table 4.2 Establishment of Grievance Redress Committees (GRCs)

District	Contract Package	Total No. of DSDs	GRCs Established during the previous reporting period	Total No. of GNDs	GRCs Established during the previous reporting period
Matara	M1	02	02	48	48
	M2	06	06	20	20
	M3	07	07	25	25
<i>Sub total</i>		15	15	93	93
Galle	G1	04	04	24	24
	G2	06	06	18	18
	G3	08	08	42	42
<i>Sub total</i>		18	18	84	84
Hambantota	H1	05	05	19	19
	H2	04	04	18	18
	H3	03	03	14	14
<i>Sub total</i>		12	12	51	51
Total		45	45	228	228

Establishment of all GRCs at GND and DS levels have been already completed during the

previous reporting period.

4.2.2.3 Receiving Grievances

Public grievances are received from the general public in the form of grievances, requests, suggestions, and complaints by the project during the implementation of project activities

(a) Public Awareness;

In addition to the community awareness meetings held at the commencement of the project, a public notice developed in local language is being displayed at community attracted places including Grama Niladhari (GN) offices and Divisional Secretariats (DS) in the project area. The main purpose of the notice is to create awareness among communities on the project, understand to what extent the community can involve in project activities and how to make complaints, suggestions, grievances and requests to the project. The public notice gives the key information about the project and contact numbers of relevant officers of the project who are to be contacted regarding social and environment issues.

(b). Channels of Receiving Public Grievances

A system of channels has been established to receive public suggestions, requests, complaints and grievances by the project. The public is clearly informed that they can choose any of the following channels in submitting their complaints/ grievances/ suggestions or requests to the project.

i. Complaint & Suggestion Box

Availability of Complaint & Suggestion box at the site has been identified as one of the effective methods to get views of communities prior to the finalizing of road designs. Complaint & Suggestion boxes are installed at Contractor's site offices in all Contract Packages and the public are expected to tender their written grievances to the Contractors Offices through Complaint & Suggestion box. Complaints/ Suggestions are being collected from the Complaint & Suggestion box at the end of each day.



Picture 09. Complaint box installed at Contractor's office. Contract Package H2, Hambantota District

ii. Office of Grama Niladhari (GN)

Grama Niladhari (GN) is the village level government representative of the administrative set up of Sri Lanka. Therefore, the project has made arrangements to officially appoint GN as the Chairman of the Grievance Redress Committee (GRC) established under the project at Grama Niladhari Division (GND) level. A public notice is also displayed at each GND offices in the project area and the public can submit their written grievances to the GN office.



Picture 10. Office of Grama Niladhari, Kotawila- North, Contract Package M3, Matara District

iii. Office of the Divisional Secretary

Divisional Secretary (DS) is the divisional level government representative of the administrative set up of Sri Lanka. Therefore, the project has made arrangements to officially appoint DS as the Chairman of the Grievance Redress Committee (GRC) established under the project at Divisional Secretary (DS) level. A public notice is also displayed at each DS offices in the project area and the public can submit their written grievances to the DS office.

iv. Field staff

In addition to the above channels, all the field staff of the project is instructed to accept public grievances and hand them over to the Project Engineer (PE)/ Environment Officer (EO) /Social Safeguard Officer (SSO) on the same day or in failing which the following day for necessary action.

v. Online system

The project coordinating PIU with assistance from ADB is developing an online system to receive public requests, comments and suggestions.

(c). Maintenance of records for public complaints

Maintenance of relevant records is considered as a prime requirement. All the received grievances are being registered at the Project Manager's office of each Contractor. The grievances received by the project are being prompt attended to.

All the grievances received are classified according to the nature of grievance. Classified grievances and the status of action taken are summarized in the table below;

Table 4.3 Classified summary of Public Grievances, Requests, Suggestions and Complaints

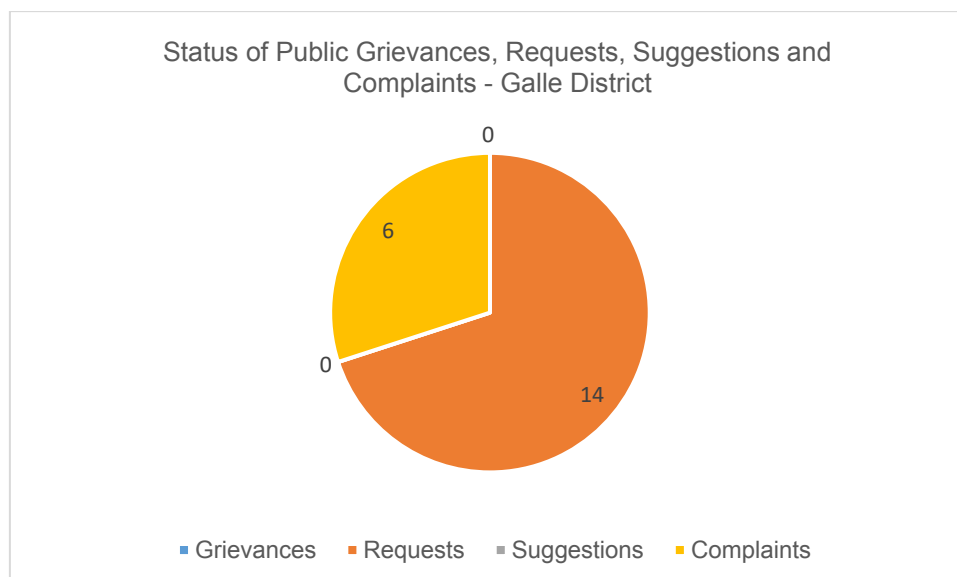
District	Contract Package	No. of Roads	No. of Grievances	No. of Requests	No. of Suggestions	No. of Complaints	Total	No. Attended	No. Unattended	No. Completely settled	Solution in progress
Galle	G1	04	00	06	00	01	07	07	00	06	01
	G2	03	00	02	00	02	04	04	00	04	00
	G3	06	00	06	00	03	09	09	00	08	01
Sub Total		13	00	14	00	06	20	20	00	18	02
Matara	M1	08	00	06	00	04	10	10	00	10	00
	M2	06	00	02	00	05	07	07	00	05	02
	M3	04	00	04	00	00	04	04	00	04	00
Sub Total		18	00	12	00	09	21	21	00	19	02
Hambantota	H1	04	00	05	00	00	05	05	00	04	01
	H2	03	00	01	00	02	03	03	00	03	00
	H3	00	00	00	00	00	00	00	00	00	00
Sub Total		07	00	06	00	02	08	08	00	07	01
Total		38	00	32	00	17	49	49	00	44	05

During the period under review (January – June, 2018), 49 grievances (grievances, requests, suggestions and complaints) received in nine (9) Contract Packages in the three districts out

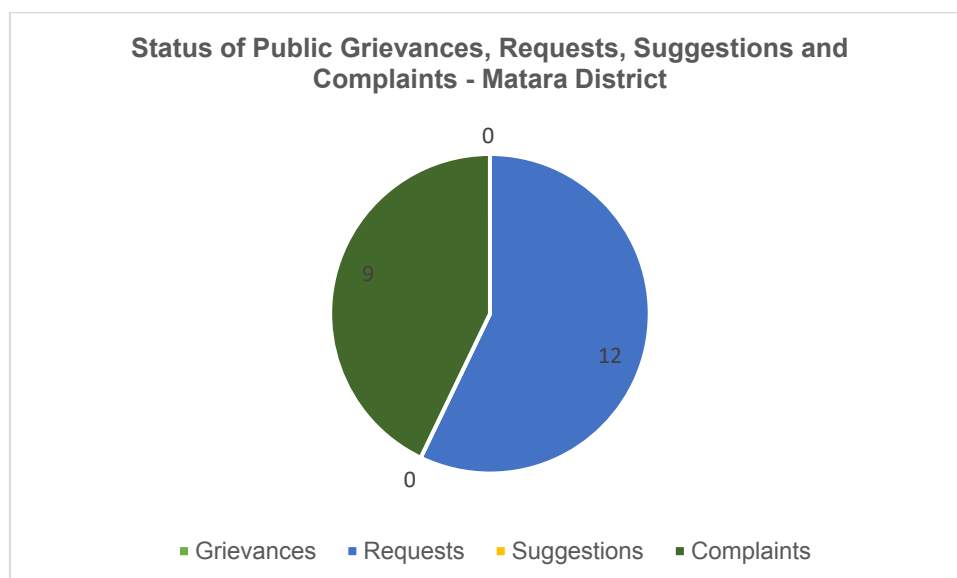
of which 44 have been completely settled to the satisfaction of the complainers and 05 are being processed.

Graphical presentation of status of Public Grievances, Requests, Suggestions and Complaints

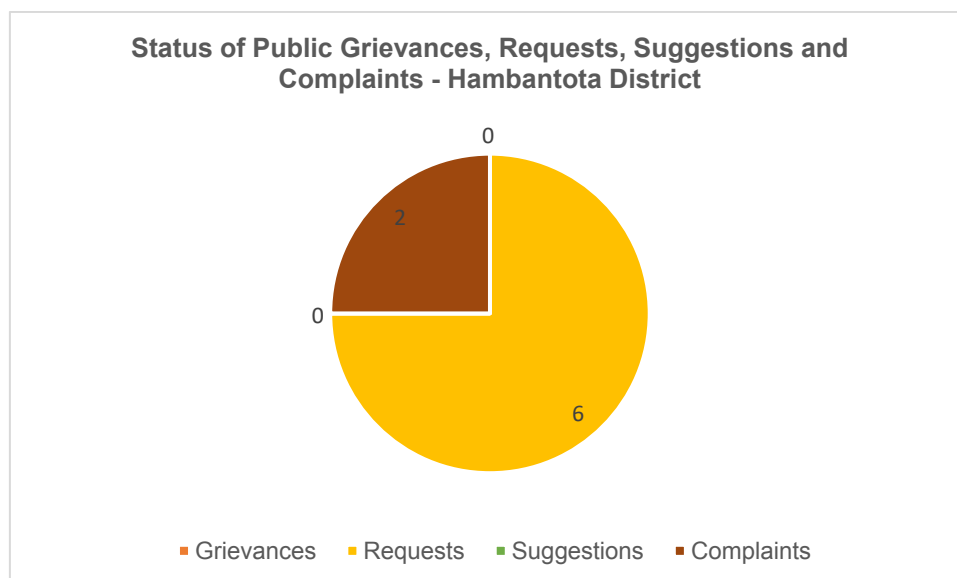
Graph 4.1 Status of Public Grievances, Requests, Suggestions and Complaints – Galle District



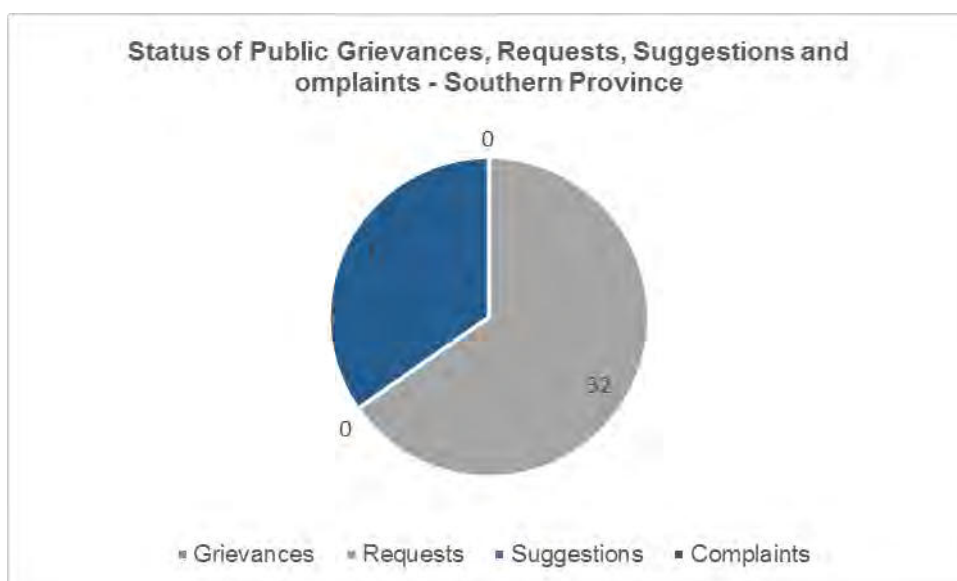
Graph 4.2 Status of Public Grievances, Requests, Suggestions and Complaints – Matara District



Graph 4.3 Status of public Grievances, Requests, Suggestions and Complaints – Hambantota District



Graph 4.4 Status of Public Grievances, Requests, Suggestions and Complaints – Southern Province



4.2.2.4 Number of GRC meetings held during January to June, 2018

The prime objective of forming GRCs is to accomplish the purpose of establishing grievance redress mechanism in the project. Hence, the functions of GRCs are confined to discuss only the project related public issues, requests, grievances, suggestions, complaints, proposals etc. Thereby, it is expected to find collective best solutions for such issues & arrive at decisions. GRC meets only when there is a public issue to be settled. The number of meetings of GRC depend on the number of issues to be settled and the complexity of those issues.

Table 4.4 Number of GRC meetings held (January – June, 2018)

District	Contract Package	No. of roads	No. of GRC meetings held			
			GND	DSD	PC	Sub Total
Galle	G1	15	05	00	00	05
	G2	22	03	00	00	03
	G3	29	04	00	00	04
Matara	M1	22	06	00	00	06
	M2	19	05	00	00	05
	M3	25	06	00	00	06
Hambantota	H1	19	04	00	00	04
	H2	18	02	00	00	02
	H3	14	00	00	00	00
Total		183	35	00	00	35
Cumulative Total			1372	270	00	1642



Picture 11. A GRC meeting held at GN level - Contract Package M2, Matara District

4.2.3 Addressing Grievances (Complaints, Grievances, Requests and Suggestions) at three (03) levels;

In order to address the public grievances efficiently and to the satisfaction of complainers, iRoad (SP) has established a mechanism to address those complaints at grassroots level, GND level GRCs and DSD level GRCs. The table 4.5 shows the solutions given for public complaints at different levels during the period under review.

Table 4.5 – Solutions given for Complaints at grassroots, GND and DSD levels

District	Contract Package	No. of Complaints (Grievances, Requests, Suggestions, Complaints)	Solution in progress	No. settled	No. Unattended	Settled at grass root level (1)	Settled at GND level (2)	Settled at DSD level (3)	Settled at PC level (4)
Galle	G1	07	01	06	00	04	02	00	00
	G2	04	00	04	00	03	01	00	00
	G3	09	01	08	00	05	03	00	00
Sub total		20	02	18	00	12	06	00	00
Matara	M1	10	00	10	00	07	03	00	00
	M2	07	02	05	00	04	01	00	00
	M3	04	00	04	00	02	02	00	00
Sub total		21	02	19	00	13	06	00	00
Hambantota	H1	05	01	04	00	03	01	00	00
	H2	03	00	03	00	02	01	00	00
	H3	00	00	00	00	00	00	00	00
Sub total		08	01	07	00	05	02	00	00
Total		49	05	44	00	30	14	00	00

The total number of public complaints received during the period under review is 49 and all the complaints have been attended. As depicted in the above table, 44 complaints have been completely settled and the rest, 05 complaints are being in the process of settling.

4.2.4 Design Changes made due to Public Requests;

In establishing the concept of Context Sensitive Design (CSD), the project has responded the public voices and accommodate their requests/grievances in to the road designs within the provisions of Loan Covenant.

A summary of design changes made to the original designs of roads due to public requests appear in the table 4.6

Table 4.6 Design changes made to the original design of roads due to public requests

District	Contract Package	No. of roads where designs were changed	No. of design changed
Galle	G1	None	
	G2	None	
	G3	03	03
Matara	M1	None	
	M2	None	
	M3	None	
Hambantota	H1	01	01
	H2	02	03
	H3	None	
Total		06	07

Design changes made to the original design of roads due to public requests are appeared in Annexure 02

4.2.4.1 Cost invested to accommodate Public Requests

A total amount of Rs. 389,700,175 has been invested to accommodate the public requests to the road designs in the three districts up to 30 June, 2018.

Details of cost invested to accommodate public requests are in the following Tables 4.7, 4.8 and 4.9

Table 4.7 Cost invested to accommodate Public Requests– Galle District

Public Requests	Contract Package G1	Contract Package G2	Contract Package G3	Total (Rs.)
House Access	1,835,400	5,195,630	997,398	8,028,428
Retaining Wall	3,126,090	2,637,041	19,096,549	24,859,680
Culvert	2,645,412	11,504,602	2,742,184	16,892,198
Concrete Dain	903,900	10,997,414	31,322,366	43,223,680
Service Ducts	1,051,560	-	-	1,051,560
Earth Drain	349,650	-	57,290	406,940
Curb & Channel	300,000	-	-	300,000
Property Damages	-	780,400	3,848,474	4,628,874
Cover Slab	-	152,100	-	152,100
ABC/Soil work	-	1,553,580	267,300	1,820,880
Pave Asphalt	-	226,383	-	226,383
Dish Drains	-	-	2,769,780	2,769,780
L Drains	-	-	2,409,244	2,409,244
Total (Rs.)	10,212,012	33,047,150	63,510,585	106,769,747

Table 4.8 Cost invested to accommodate Public Requests– Matara District

Public Requests	Contract Package M1	Contract Package M2	Contract Package M3	Total (Rs.)
House Access	-	2,526,962	3,686,853	6,213,815
Retaining Wall	45,094,086	17,298,696	16,224,445	78,617,227
Culvert	271,257	10,314,014	2,323,127	12,908,398
Concrete Dain	3,894,170	11,080,939	2,228,470	17,203,579
By Road	938,650	-	660,020	1,598,670
Earth Drain	-	-	86,520	86,520
Curb &Channel	1,314,698	2,482,258	-	3,796,956
Hard Shoulder	-	-	1,100,785	1,100,785
Turfing	-	-	5,940	5,940
Boundary Wall	-	-	18,594	18,594
Pave Asphalt	-	-	406,011	406,011
By pass			500,000	500,000
Total (Rs.)	51,512,861	43,702,869	27,240,765	122,456,495

Table 4.9 Cost invested to accommodate Public Requests– Hambantota District

Public Requests	Contract Package H1	Contract Package H2	Contract Package H3	Total (Rs.)
House Access	318,450	3,650,952	15,756,224	19,725,626
Retaining Wall	210,704	18,014,496	5,797,056	24,022,256
Culvert	20,980,789	493,673	6,471,339	27,945,801
Concrete Drain	13,821,850	17,083,230	29,233,828	60,138,908
Dish Drain	114,480	-	-	114,480
Service Ducts	213,720	-	-	213,720
By Road	-	779,965	-	779,965
Earth Drain	-	865,074	1,562,960	2,428,034
Kerb & Channel	-	-	11,914,791	11,914,791
Bell Mouth	580,000	-	-	580,000
Design Improvements	-	12,610,352	-	12,610,352
Total (Rs.)	36,239,993	53,497,742	70,736,198	160,473,933

4.3 HIV/AIDS prevention and Health awareness programs –Step 1 & 2

As per the Contract Document Volume 3 S.Cl.108.3 and Volume 5A BOQ pay item 108.3 (1) the contractors have to conduct HIV/AIDS prevention and Health programs to all site staff, labourers and the immediate local communities via an approved service provider, in accordance with the S.Cl.6.7 of Conditions of Contract and the need of providing awareness on STD including HIV/ AIDS and human trafficking for civil works employees and communities is also specified under item 1.6 of GAP. The project has made arrangements to implement the programs in two steps at each Contract Package:

Eighteen (18) HIV/AIDS prevention and Health awareness programs have been already conducted in each Contract Package before the period under review.

4.4 Road Safety Awareness Programs (RSA for school community)

Road Safety Awareness (RSA) programs for community focusing on the school children, their parents and the communities in the project area who are the prime road users, have been conducted in selected nine schools in all Contract Packages of Galle, Matara and Hambantota districts in Southern Province as per instructions on Road Safety Awareness Campaigns under Appendix 3 of the Resettlement Framework (RF) and item 1.5 of the GAP in the FAM.

Nine (09) RSA programs have been already conducted in each Contract Package before the period under review.

4.5 Cooperate Social Responsibility (CSR) implemented by Contractors and PIC

In addition to the civil work construction, the Contractors have organized and conducted substantial number of CSR programmes with the support of PIC. The main objectives of conducting CSR programmes are;

- To identify the felt need of vulnerable groups in the project area and to serve them with tangible or/and intangible (knowledge, awareness etc.) benefits.
- Build up close relationship with communities in the project area
- Enhance the goodwill about the project and the Contractors

A brief of information about the CSR programmes conducted is shown in the table below

Table 4.10 Cooperate Social Responsibility (CSR) Programmes conducted during the period under review

District	Contract Package	No. of CSR Programs	No. of Participants / Beneficiaries				
			Male	Female	Total	Male %	Female %
	G1		None				
Galle	G2		None				
	G3	02	212	14	226	93.81	06.19
	M1		None				
Matara	M2	01	27	04	31	87.09	12.91
	M3		None				
	H1		None				
Hambantota	H2	06	173	231	404	42.82	57.18
	H3		None				
Total		09	412	249	661	62.33	37.67

It is noteworthy that the average percentage of 38.67 beneficiaries were female from the total participants attended to the social work programmes conducted in Galle, Matara and Hambantota during the period under review.



Picture 12. Tree Planting program, Contract Package M2, Matara District

Cooperate Social Responsibility (CSR) Programmes conducted are appeared in Annexure 03

4.6 Workshops Conducted

Workshops have been conducted during the period under review as shown in the table below;

Table 4.11 Workshops conducted during the period

Date	Nature of workshop	Venue	Objectives	Target group	Participants		Total
					Male	Female	
11.01.2018	Human Trafficking	Team Leader's office, Matara	Raise public awareness about potential trafficking around construction camps Introduce good behavior ethics/codes for the staff Pay special attention to vulnerable women and children Develop capacity of local authorities, police officers, school teachers to raise awareness among communities on trafficking including road safety/risk of accidents	ADB team, RDA staff (iRoad, ESDD), PIC-01 team, Contractor staff	33	8	41
30.01.2018	PBM workshop- Galle district	Chief Secretariat's office - Galle	Raise the awareness of all stakeholders involved in PBM for effective operation in the 3 year PBM period	RDA staff (iRoad), PIC-01 team, Contractor staff	53	15	68
15.02.2018	PBM workshop- Hambantota district	District Secretariat Auditorium, Hambantota	Raise the awareness of all stakeholders involved in PBM for effective operation in the 3 year PBM period	RDA staff (iRoad), PIC-01 team, Contractor staff	42	10	52
22.02.2018	PBM workshop- Matara district	District Secretariat office, Matara	Raise the awareness of all stakeholders involved in PBM for effective operation in the 3 year PBM period	RDA staff (iRoad), PIC-01 team, Contractor staff	55	1	56
27.02.2018	Safety workshop on PBM activities – Hambantota district	Contract Package H1 – Road ID 26	Make aware with PBM requirements Base for proper maintenance of roads Highlight the importance of women contribution	PIC-01 team, Contractor staff	28	7	35

			to road maintenance				
04.05.2018	Gender Awareness Program - Matara district	Gurubaula Kathahala, Morawaka	To integrate gender perspectives into analysis and perspectives and planning in the transport sector	ADB team, RDA staff (iRoad, ESDD), PIC-01 team, Representatives of PIC-02 & PIC-03 Contractor staff	42	5	47
17.05.2018	Safety workshop on PBM activities- Matara district	Contract Package M3 – Road ID 26	Make aware with PBM requirements Base for proper maintenance of roads Highlight the importance of women contribution to road maintenance	PIC-01 team, Contractor staff	38	5	43
22.05.2018	Safety workshop on PBM activities- Galle district	Contract Package G3 – Road ID 40	Make aware with PBM requirements Base for proper maintenance of roads Highlight the importance of women contribution to road maintenance	PIC-01 team, Contractor staff	36	14	50
12.06.2018	Gender Awareness Program – Galle district	Chief Secretariat s' office - Galle	To integrate gender perspectives into analysis and perspectives and planning in the transport sector	RDA staff (iRoad, ESDD), PIC-01 team, Contractor staff	41	14	55
14.06.2018	Gender Awareness Program - Hambantota district	District Secretariat Auditorium, Hambantota	To integrate gender perspectives into analysis and perspectives and planning in the transport sector	RDA staff (iRoad, ESDD), PIC-01 team, Contractor staff	24	11	35
Total					392	90	482



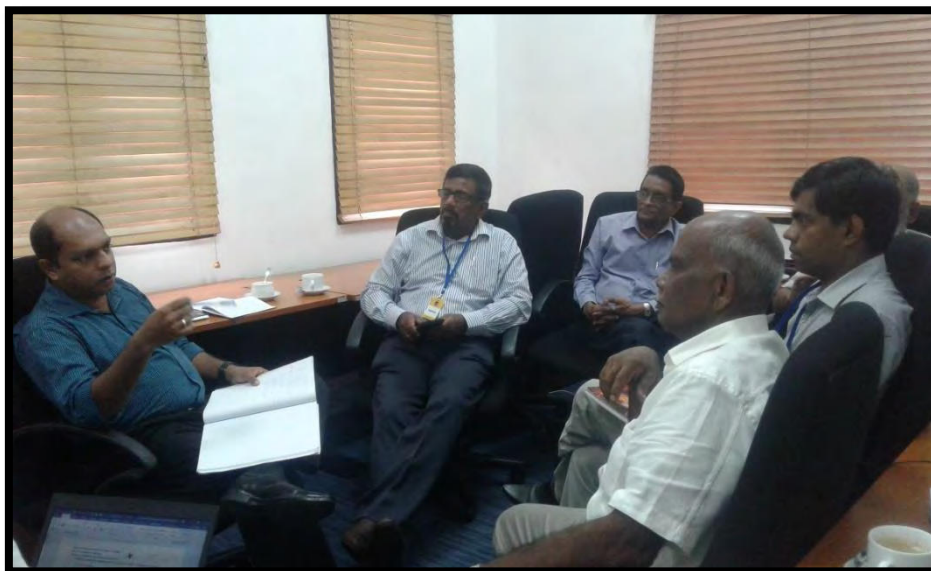
Picture 13. Workshop on Integrating Gender Perspective into Analysis and Planning in the Transport Sector held on 12.06.2018- Galle District

Concise report on Workshop on Integrating Gender Perspective into Analysis and Planning in the Transport Sector - Galle District is appeared in Annexure 04

4.7 The Socio – Economic Impact Assessment (midterm) Survey -2018

The Socio – Economic Impact Assessment (midterm) Survey -2018 has been commenced with the objective of assessing the output, outcome and the impact of the implementation of iRoad project, PIC – 01, Southern Province. The following activities have been carried out during the period under review;

- An initial meeting was held to discuss the matters relating to implement the Survey at PMU office in participation with representatives of PMU, ADB, Consultants.
- A Service Provider has been selected through a competitive bidding process.
- Pre- preparatory meeting was held at Team Leaders office
- A meeting was held to discuss on the questionnaire at ADB country office.
- Questionnaire was revised and translated in to Sinhala and pre-tested in the field
- An orientation workshop was held to familiarize the questionnaire and to prepare the implementation plan.
- The Sample of 1000 households has been identified in Galle, Matara and Hambantota districts.
- Collection of data is implementing in all three districts.



Picture 14. Preliminary discussion on implementation of Socio – Economic Impact Assessment (midterm) Survey -2018 at ADB country office



Picture 15. Orientation workshop for conducting of Socio – Economic Impact Assessment (midterm) Survey -2018



Picture 16. Administering the questionnaire with a Householder, Contract Package M3, Matata District

5. LAND DONATION

Paragraph four (4) of the Resettlement Framework (RF) for the Integrated Road Investment Programme (iRoad) states that “for the rural roads improvements will be undertaken completely within the existing Right of Way (ROW) which is between 2.5m to 5.5m. However, in paragraph eight (8) it states that voluntary land donation will be used if additional strip of private land is required. Appendix 3 of the RF further explains that land donation will be method if private land is required for the iRoad. Voluntary donation of land involves the contribution by individuals of land for the project that has the community benefits including rural roads that are part of the community driven development. The basic principles are the following:

- that the project benefits will realistically offset the size of the donated land;
- in case negotiations for voluntary land donation fail, eminent domain or other powers of the state will not be used;
- a maximum of 5% of land can be donated, particularly for the vulnerable households; and for households donating land, no physical displacement will take place

As per Appendix 3 of the Resettlement Framework (RF), written confirmation is required for the donation made by the land owners.

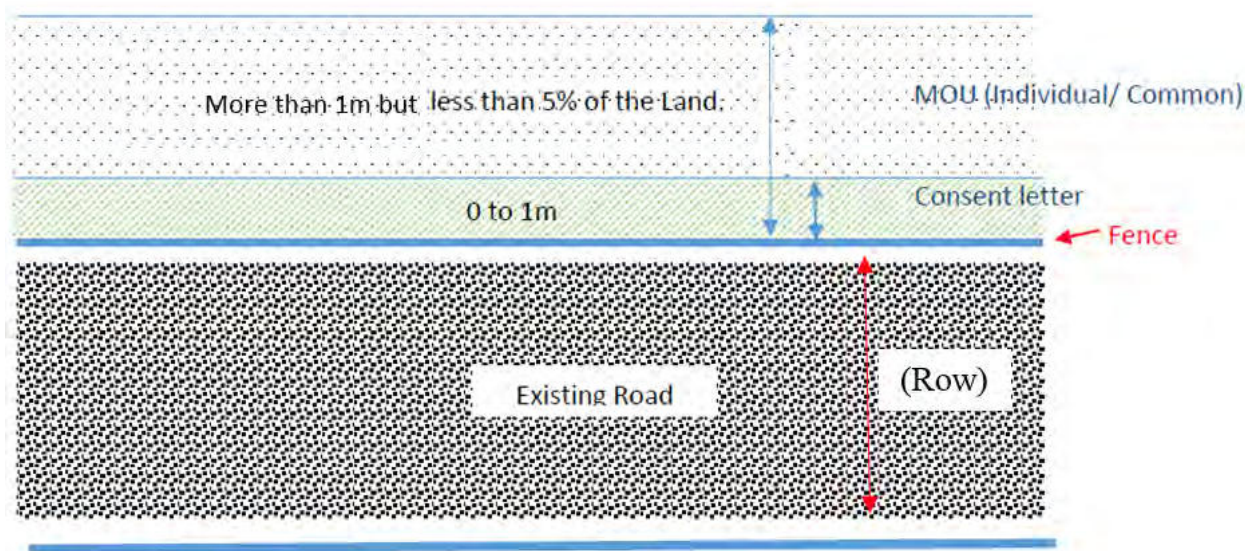
Written Confirmation of Land Donation

If any land owner is willing to donate a strip of his/her land for the improvement of roads that should be confirmed by a written document. As illustrated in the above diagram, if the width of such land strip is more than 01 meter, relevant Project Engineer (PE) shall have to enter in to a **Memorandum of Understanding (MOU)** with the land owner. In this regard, PE shall ensure that the donated land strip is less than 5% of the owner’s entire land as per Resettlement Framework (RF).

If the width of such land strip is less than 01 meter, PE shall obtain a duly signed **letter of consent** from the land owner.

The above system has been adopted to avoid confusions as to what level the agreements will be signed. This system is currently practicing in other PICs also.

Figure 5. 1 Written confirmation of land donation



5.1 Status of Land Donation

In the implementation of the iRoad, it was identified that there had been occasions where additional land strips were needed to carry out the road improvement works.

Hence, the project has followed the procedure as per guidelines stipulated in the RF for land donation as follows;

- Disseminate information to all relevant agencies on project information and the land donation concept. Continuous public awareness on land donation process has encouraged people to involve in project activities positively. Methods that are being used to create awareness among public and other stakeholders are one on one discussions, Focus Group Discussions (FGD) and GRC meetings. A Public Notice has been developed in local language in accordance with the guidelines laid down under Appendix 3 of the Resettlement Framework (RF). The public notices are being displayed at notice boards of every Grama Niladhari offices located in the project area. As a result, land owner having understand the value of donating their pieces of lands for the purpose of improving/rehabilitation of roads, 14 land owners have willingly agreed to donate their pieces of lands to meet the additional land requirement for the improvement of roads.
- Identify and verify the land to be donated.
- Raise awareness and undertake meaningful consultation and negotiation with APs.
- Signing of Memorandums of Understanding (MOUs) by the land owners and the relevant Project Engineers. (This activity ensures the transparency through written confirmation.)

Memorandums of Understanding (MOUs): The project has introduced two types of MOUs and translated in to local language.

- MOU to be signed by a single private owner
and

- b) MOU to be signed by group of private land owners.

In addition, if the donated land is less than one meter, consent letters have been obtained from the land owners.

A total of 14 Consent Letters have been obtained during the period under review

Memorandums of Understanding (MOUs) –Common (1 January to 30 June, 2018);

None of the Individual MOU has signed during the period from January to June 2018

Memorandums of Understanding (MOUs) –Common (1 January to 30 June, 2018);

None of the common MOU has signed during the period from January to June 2018

Consent letters (1 January to 30 June, 2018)

Table: 5.1 Confirmation of land donation –Consent letters (1 January to 30 June, 2018)

District	Contract Package	No. of roads where Consent	No. of Consent Letters
Galle	G1		None
	G2		None
	G3		None
Matara	M1		None
	M2	02	14
	M3		None
Hambantota	H1		None
	H2		None
	H3		None
Total		02	14

Status of Land Donation is appeared in Annexure 06

6. STAKEHOLDER COORDINATION

The project has made successful effort to involve relevant stakeholders in the project activities. In addition to the involvement of Divisional Secretaries (DSS) and Grama Niladharies (GNN) through Grievance Redress Mechanism (GRM), the project has taken measures to maintain an effective coordination with stakeholders. It was evident that a better coordination among stakeholders leads to facilitate field activities efficiently

Chief Secretary....



Picture 17. Progress monitoring meeting conducted by chief secretary at chief secretariat office, Southern Province

Religious leaders.....



Picture 18. Involvement of Religious leaders in settling public issues – Contract Package M2, Matara District

Health Department



Picture 19. Officers of health department involving at CSR programs Contract Package M1, Matara District

Community....



Picture 20. Community helps in sharing indigenous knowledge in project activities- Contract Package G2, Galle District

7. MONITORING

Project Implementation Consultants (PIC) has closely monitored the Social Safeguard process of the project through:

- Making site visits,
- Holding review meetings,

In addition, Project Implementation Consultants (PIC) and Environment and Social Development Division (ESDD) of Road Development Authority (RDA) have made joint field visits together with the relevant staff of the Contactors to monitor the social and environment progress in each district and held progress review meetings. Field observations were mainly discussed at these meetings and arrived at collective decisions to mitigate the issues identified at the time of field visit.

Furthermore, CSD and Safeguards Coordination Specialist of TA8473 has made frequent visits to the sites and held review meetings and supported with providing guidance to implement the social safeguards process in high standards.

The team of experts of ADB TA also visited the project areas during the period under review, and made an invaluable contribution to the successful implementation of social safeguards process of PIC-01, Southern Province.

7.1 Monitoring – By Consultants (PIC-01)



Picture 21. Progress monitoring meeting conducted by TL – PIC-01 at TL office, Matara



Picture 22. Progress monitoring at Contract Package H1, Hambantota District



Picture 23. SGRS monitors the maintenance of records related to public complaints – Contract Package M3, Matara District

7.2 Monitoring – By Environment and Social Development Division (ESDD), RDA



Picture 24. Monitoring visit by ESDD, RDA at Human Trafficking workshop, TL office, Matara

7.3 Monitoring – By CSD & Safeguards Coordination Specialist, TA 8473, ADB



Picture 25. Mr. Saranga Gajasinghe, CSD & Safeguards coordination specialist of TA8473 in Contract Package M1, Matara District



Picture 26. Field monitoring visit of CSD & Safeguards Coordination Specialist of TA8473 in Contract Package M3, Matara District

7.4 ADB MONITORING VISITS



Picture 27. Team Leader PIC-01, Addresses the ADB mission meeting – RE office, Galle District



Picture 28. Social, Gender and Resettlement Specialist PIC-01, Addresses the ADB mission meeting – RE office, Galle District



Picture 29. ADB Mission members at document desk, RE office, Galle District



Picture 30. ADB mission made a monitoring visit - Contract Package G2, Galle District

8. CONCLUSION AND RECOMMENDATIONS

8.1 Conclusion

Semi-annual Social Monitoring Report for the period from January to June, 2018 has been compiled as per section 10 of Resettlement Framework (RF) on “Monitoring and reporting”. The report consists of the status of compliance with the Social Safeguard requirements of Resettlement Framework (RF), Loan Conditions (social safeguards) and Facility Administration Manual (FAM) updated March, 2018.

Under the Social Safeguard issues and mitigation measures, it discusses the gender involvement in project activities, integrating EWCD friendly design, practical application of Grievance Redress Mechanism (GRM), establishment of Grievance Redress Committees (GRCs), addressing public grievances, Cooperate Social Responsibility (CSR) Programmes and land donation process. Further, stakeholder co-ordination and monitoring process of social safety process have also been discussed in the report.

In compliance with the loan conditions (Social Safeguards) and the Resettlement Framework (RF); recruitment of individual consultants for activities laid down in the Procurement Plan has already been completed. In relation to employment, Contractors were instructed and encouraged to follow the conditions laid down in the Schedule 5 – labour standards in the Loan Conditions.

As per Gender Action Plan (GAP) under the section VIII Gender and Social Dimensions of Facility Administration Manual (FAM), Elderly- Women- Children- Disabled (EWCD) friendly design has also been attended where requested. It was possible to identify the needs of vulnerable groups through building up of close relationship with communities in the project area and to serve them.

Women involvement is encouraged and monitored while the implementation of the project activities and the female labour contribution for the construction work, office work, for CSR activities and other workshops conducted by the project during the period under review:

- As per the status of gender composition of the Consultants and Contactors’ staff & labour crew in PIC-01 Southern Province, it was able to enhance the female

contribution to the construction and office works by 0.96% with compared to the previous period under review.

- Women involvement is ensured in conducting Cooperate Social Responsibility (CSR) programmes by the Contractors under the patronage of iRoad PIC – 01 (female participation was 37.76%)
- Women participation was encouraged in conducting workshops by the PIC - 01 (female participation was 18.67%)
- The Contactors were instructed and encouraged to employ, poor local women in particular.
- All the gender related issues have been effectively addressed and complied by the Social, Gender and Resettlement Specialist of PIC-01 together with other relevant officers of the project.

The Contractors have been discouraged to utilize child labour as per guidance of Loan Conditions. None of the Contractors have assigned child labour for the project activates.

The report also describes the concept of Context Sensitive Design (CSD) and establishment of Grievance Redress Mechanism (GRM). The effective strategies have been applied to address social safeguard issues confronting the project. The significance of GRM is that the project could get the maximum cooperation of state authorities as well as other stakeholders in addressing social issues through Grievance Redress Committees (GRCs) at Grama Niladhari Division (GND) level as well as Divisional Secretary Division (DSD) level. It was also observed that the functioning of GRCs led to develop the trustworthiness in the minds of people on project activities and create a trusted way to voice and resolve the issues of the affected person. All GN and DS level GRCs were completed during the previous reporting period.

The report also discusses on public complaints, grievances, requests and suggestions received through the specific channels introduced by the project and the way those were classified and addressed effectively. During the period under review, a total of 49 Public Complaints have been received in three districts out of which 44 Complaints have been completely settled to the satisfaction of complainers and 05 are being in the process of settling.

It is noteworthy, that a total amount of Rs. 389,700,175 has been invested to accommodate the public requests to the road designs in the three districts in Southern Province up to 30 June, 2018.

Table 8.1 Summary of cost invested to accommodate Public Requests

District	Amount (Rs)
Galle	106,769,747
Matara	122,456,495
Hambantota	160,473,933
Total	389,700,175

In addition to the civil construction work, the Contractors have also conducted nine (09) Cooperate Social Responsibility (CSR) programmes specially targeting at vulnerable groups in the project area. The total number of beneficiaries were 661 in which 249 were female and 412 were male at those CSR programmes conducted during the period under review.

As per the Resettlement Framework (RF) for the Integrated Road Investment Programme (iRoad) “for the rural roads improvements will be undertaken completely within the existing Right of Way (ROW) which is between 2.5m to 5.5m”. Therefore, voluntary land donation will be utilized, if additional strip of private land is required. Land donation process is being implemented and signed fourteen (14) consent letters have been obtained from land owners for the donated land which is less than one-meter width.

During the period under review, PIC-01 (SP) was able to establish strong coordination among stakeholders such as Divisional Secretaries, Assistant Directors of Planning, health staff, Department of Agrarian Services, Provincial Road Development Authority (PRDA), Mahaweli Authority, Local Government Department, Pradeshiya Sabhas, Non-Government Organizations (NGOs) etc. in the Southern Province.

PIC-01 (SP) has given a pivotal attention to monitor the social safeguard process of the project. In addition to the frequent site visits, held substantial number of review meetings to monitor the progress at TL, RE, ARE levels and to identify the strengths and weaknesses of the process and taken remedial actions by the PIC-01 (SP).

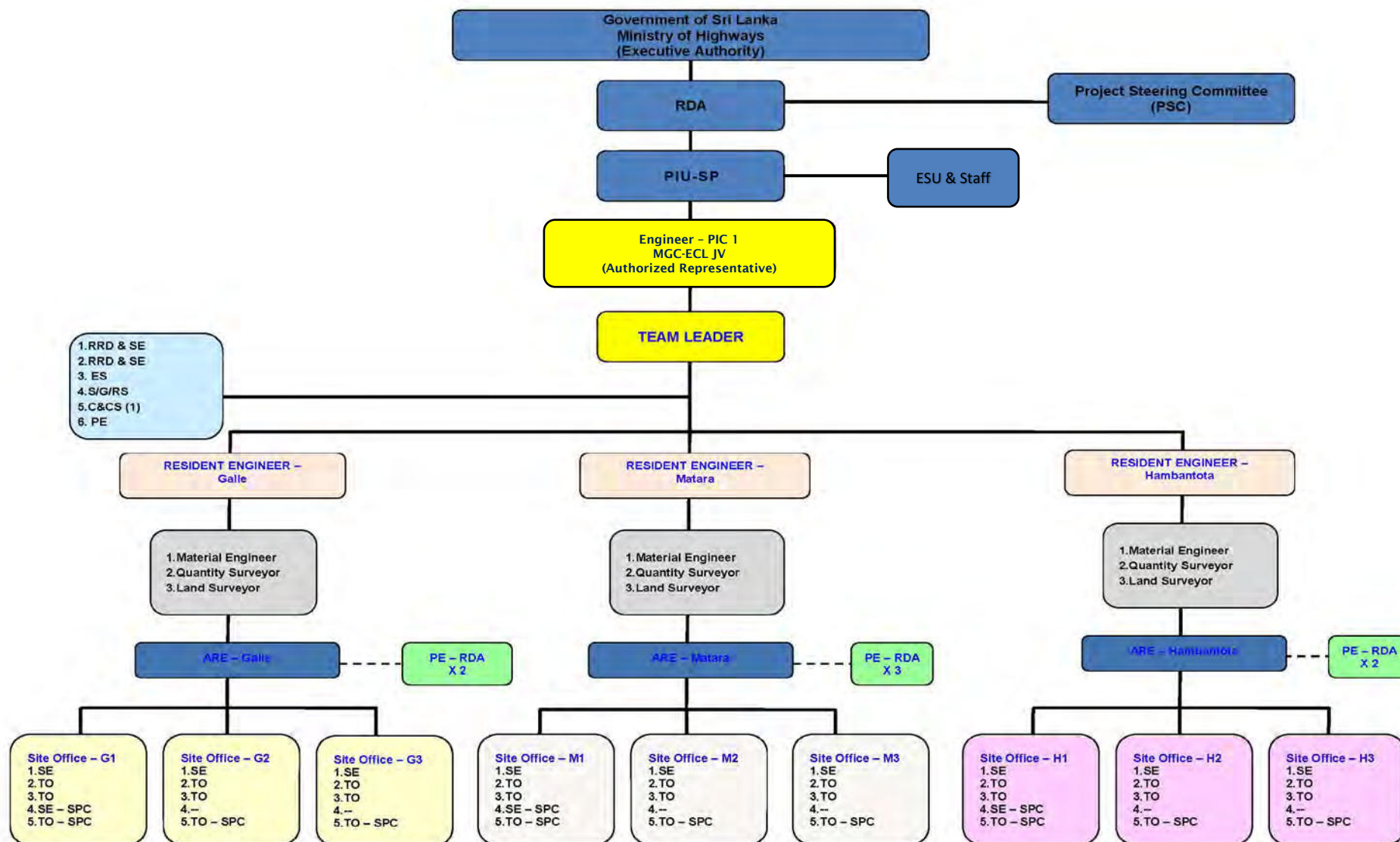
In addition, CSD & Safeguards coordination Specialist of TA8473 (ADB) have made frequent visits to the sites and held review meetings and supported with providing guidance to implement the social safeguards process in high standards.

Staff of the ESDD of RDA also made frequent visits to the project sites and review the progress and guided the staff to operate the system properly.

8.2 Recommendations

- Since the iRoad PIC-01 (SP) is implemented in the nature of a pilot project, it is suggested to draw more attention to provide guidance to document lessons learnt in the field, preferably in the form of Case Studies.
- It is also suggested to make adequate financial provision in the upcoming projects to implement gender related special programmes for the achievement of better results as per the GAP.
- It is also suggested to make provision to conduct community attracted activities such as lively hood programmes etc. to enable to ensure the active community involvement towards the project implementation.
- Through the experience gained during the period under review, it was observed, if field officers qualified in social science could have been assigned at Contract Package level to address social issues and to implement mitigation measures that would have been more beneficial to the communities and to achieve the project targets more effectively in respect of social safeguard component. Hence, it is recommended to assign field based social officers in upcoming similar future projects.

Overall Organization Chart for PIC



Key:

TL - Team Leader

RE - Resident Engineer

ARE - Assistant Resident Engineer

ME - Material Engineer

PE - Planning Engineer

SE - Site Engineer

E - Engineer

ES - Environmental Specialist

SS - Social Specialist

**Design changes made to the original design of roads
due to public requests**

District	Contract Package	Road ID	Name of the Road	Changes Made to the Original Design	Social/ Environment (S/E)	Discussed at GRC		Cost incurred (LKR)	
						GND (Y/N)	DSD (Y/N)	Employer	Contractor
Galle	G1	None							
	G2	None							
	G3	46	Surasena Mawatha	Gravel road to asphalt in sri-Bhodhirukkharama temple access	S	N	N		
		70	Thannahengod Road	Earth Drain to Lined Drain in end of road	E	N	N		
		44A	Elpitiya Awiththawa Road	Drain covered by cover slab in front of the Ganegoda school	S	N	N		
Matara	M1	None							
	M2	None							
	M3	None							
Hambantota	H1	36	Koggalla Sooriyawewa road	(0+100 - 0+400) Proposed to concrete with 4.2 m width at bund section	S	Y	Y		
	H2	41	Pallekanda Junction Udahatana Bimbaddala Road	Constructed the new retaining wall and changed the road alignment	S	N	N		
		44	Rajapaksha Mawatha	Changed the cross drain from 0+960 to 0+950 to keep protect the adjacent paddy field by inundation.	S	Y	Y		
				Add a cross drain at 0+580 to keep protect the adjacent house by inundation.	S	Y	Y		
	H3	None							

**Cooperate Social Responsibility (CSR) programs
conducted**

Table 4.9 Cooperate Social Responsibility (CSR) Programmes conducted during the period under review

District	Contract Package	S/ N	CSR Programs conducted	Objective/s	No. of participants / Beneficiaries			
					Male	Female	Total	Female %
Galle	G1	None						
	G2	None						
	G3	1	Provide Human Trafficking Workshop	To build safety friendly behavior among the employees community & How to cure the first-aid	208	13	221	5.88
		2	Provide ABC & Asphalted access to the Sri-Bhodhirukkharamaya temple in Deddugala Bataduwa road	Contribute to the welfare services for the public place	04	01	05	20.00
Matara	M1	None						
	M2	3	Tree planting program at police station, Kotawila	To make pleasant surroundings at the temple & encourage people for the tree planting	27	04	31	12.90
	M3	None						
	H1	None						
	H2	4	Provide foods, beverages & money for the Volleyball tournament. (Kadigamuwa 'Aruna' Sport Club)	To improve the sports skills of school children.	54	37	91	40.65
		5	Provide Plants for the tree planting program which was conducted by temple parallel to the independent day at	To make pleasant surroundings at the temple & encourage people for the tree planting.	23	76	99	76.76

		Tangalle, Jayasinghera maya Temple					
	6	Freely delivered water for villagers (Uswewa- Binkama Road)	As a minor solution for the drought & lack of water for domestic purpose.	32	54	86	62.79
	7	School Stationaries for the Advance Level passed students	To give the assistance for the students who are sitting for the higher education.	27	19	46	41.30
	8	Supply materials and money to construct the "Buddha Mandira". (At Ch.0+000 of Pattiyapola-Akkarawela Thalunna Road)	For the religious activities of villagers	23	42	65	64.62
	9	Repair the school access bridge hand rails (Uswewa secondary Collage, Uswewa)	To enhance the road safety	14	03	17	17.65
	H3	None					
Total				412	249	661	37.67

**Concise report on Integrating Gender Perspective into
Analysis and Planning in the Transport Sector – Galle
District**

ADB funded Integrated Road Investment Programme (iRoad) – Southern
Province (PIC-01, SP)

**“Integrating Gender Perspective into Analysis and Planning in the
Transport Sector”**



Workshop Report

June 12th 2018
Chief secretary office – Galle



Table of Contents	Page
1. Background	3
2. The purpose and objective of the workshop	3
2.1. Purpose	3
2.2. Objective	3
3. Workshop proceedings	4
3.1. Basic concepts of gender masculinity and femininity	4
4. Small group session	7
5. Workshop Evaluation	7
6. Conclusion of the workshop	8

Annexure 1 : Agenda

Annexure 2 : List of participants

1. Background

As per the guidance of the Asian Development Bank (ADB), Intergraded Road Investment Programme (iRoad) PIC-01, Southern Province (SP), in cooperation with Road Development Authority (RDA), organized one-day workshop on “Integrating Gender Perspectives into Analysis and Planning in the Transport Sector” in Galle district. The workshop was facilitated by MG ECL Consultants and conducted by Foundation for Innovative Social Development (FISD) under the purview of Asian Development Bank.

The venue of the workshop was Auditorium of the Chief Secretary office, Provincial Council, Southern Province, Galle.

The attendees of the workshop were selected members of the staff of iRoad project, Southern Province. The total of 55 (Female 15: Male 40) were present at the workshop. (Appendix.1 shows the details of the participants)

2. The Purpose and objective of the workshop

2.1 Purpose

The purpose of the workshop is to encourage all iRoad staff to step back from their daily work and familiarize themselves with the fundamental principles of Gender Perspectives into Analysis and Planning in the Transport Sector, while ensuring that gender specific interests and concerns are properly secured and promoted. The workshop also aimed to provide opportunities for staff to develop practical strategies for integrating gender related activities into their work of the road construction.

2.2 Objective

The overall objective of the workshop is to improve the knowledge of the participants on gender issues that could be better promoted and secured in the transport sector.

3. Workshop proceedings

Participants were welcomed by Ms. Champa Kumuduni, Project engineer, Project Implementing Unit of iRoad , PIC-01, Southern Province.

Objectives of the workshop were discussed by Mr. Weerasingham, Gender Specialist, Resource panel, FISD.

All the participants were giving an opportunity to present a brief self-introduction.

Mr. Weerasingham discussed the vision of the Asian Development Bank on female participation, the present status of female in

Sri Lanka and basic concept of gender masculinity and femininity. Further, he highlighted that ADB has found some issues in some fields such as transport and construction sectors, many women face some kind of unfairness situations. Having stated that he emphasized the importance of the objectives and proceedings of the workshop, which focuses “Gender Perspectives in to Analysis and Planning” in the Transport Sector.

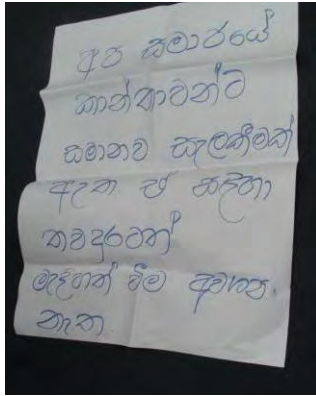


3.1. Basic concepts of gender Masculinity and femininity

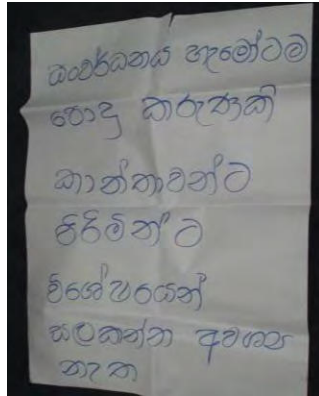
The significance of the workshop is that the whole workshop was conducted in applying participatory training techniques. After the initial introduction, all participants were invited to participate at group activities.

Activity 01:

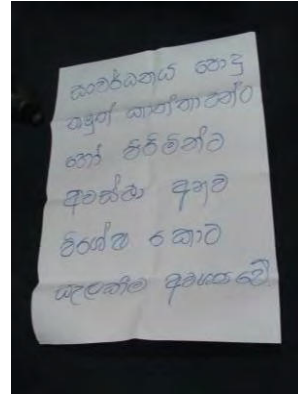
At the beginning, Mr. Weerasinghe the principal trainer of the workshop, displayed four statements relating to gender and participants were invited to choose one of the statements that they think most correct and suitable.



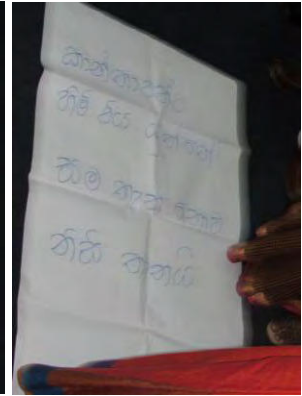
Statement 1



Statement 2



Statement 3

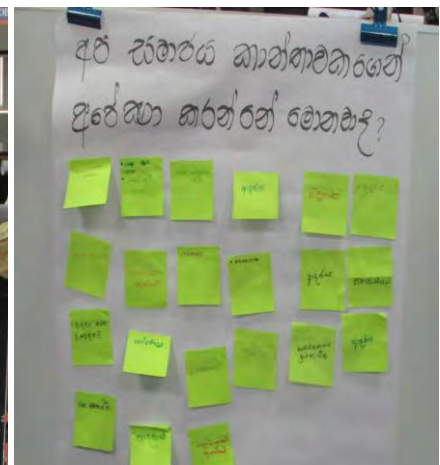
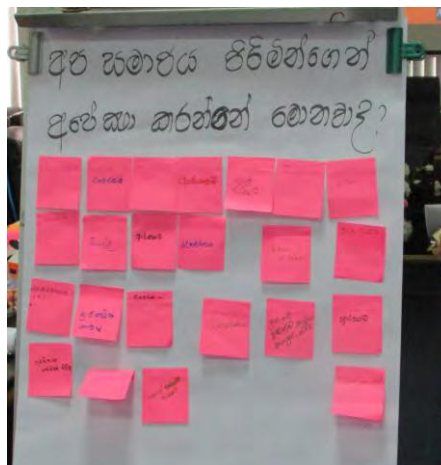


Statement 4

Participants freely went through the statements and they choose one as their favor and participants had to describe the reasons for them to select those statements. The Trainer explained all the statements and let participants to change their thoughts with rest of the activities.

Activity 2:

Participants were coupled with a male and a female. They were instructed to put their own ideas under displayed statements. all of the attendees were actively involved in the activity. The objective of the activity



was bring it out the common idea of the society and what is expected by the society from a women and a man. As common in our tradition, the results show most of men expect love, taking responsibility for the family and take care of children from women, and on the other hand, protection and earning income are expected from men.

Activity 3

Activity 3 has been focused on to identify the barriers and constraints of both women and men have to confront. The same result was observed as previous activity.

Activity 4;

During the 4th activity participants were made t understand of oppression, due to female being forced by men with the rights, resources and traditional thoughts.

The principle Trainer explained about threaten that women faced in society, by substituting balloons to women and needles to men as an energizing game. When people were received some powers how they tramp and live with others as well as when someone has lost their rights how they surrender to others. The Trainer further noted that what are the rights and rules that should be represent in a gender equity society. He explored together with participants how the rights should be divided between both men and women.



The Trainer, then explored the concept of gender-sensitivity, examining the difference between gender (socially constructed stereotypes and expectations based on sex) and sex (biological/physical characteristics of women and men). The impact of gender roles is derived from the particularities between different cultures, the way we are taught and learn, and have impacts on men's and women's access to rights and resources.

The Trainer also emphasized that the gender sensitivity is not only about awareness raising but also about the use of positive steps to mitigate the negative impacts of gendered assumptions and beliefs.

Activity 5:

Participants were asked to reflect on the links between these concepts and the subject of the construction work, as well as ordinary work in the country by identifying examples of gender- based violence. How would gender stereotypes affect, how much we know about these forms of harm?

These examples were then collected and displayed during the 5th activity. Among several propositions, the case of sexual harassment, forced marriage, treatment of women who were pregnant or had just given birth were raised.



4. Small Group Session:

Identifying opportunities for improving gender sensitivity in the transport sector.

After a practical session, participants broke into small groups (four groups) to explore in more details of the opportunities and possible strategies for improving gender sensitivity in the remainder of the construction /project life, transport sector. Each group focused on different aspect of the transport sector.

GROUP 1: - Improvements of women's relationships with social and economics.

GROUP 2: - Improvements of roads and road safety aspects.

GROUP 3: - Improvements of skills on transport planning and management.

GROUP 4: - Connecting with the responsible government authorities regarding the transport planning and management and service delivery

Main points of each group were then presented to others as follows.



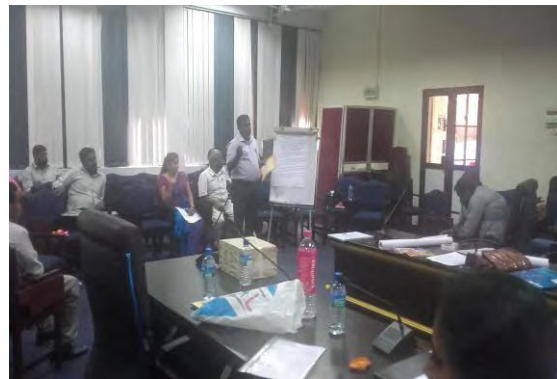
Group 1



Group 2



Group 3



Group 4

During the discussion, participants indicated;

- The importance of the workshop.
- The techniques that were used throughout the workshop were very attractive and effective.
- Most of participants mentioned that they have no any idea about the gender sensitivity before attending the event. But after the training there is a significance change in their minds in respect of gender sensitivity.
- Other important point disclosed was those who are not related with these fields, could take valuable ideas on gender sensitivity.
- One of the participants added that he happened to participate at this workshop only due to official requirement but at the end of the day he could learnt lot of things that they never knew and further he mentioned that he was happy about it.



5. Workshop Evaluation.

After the workshop, the participants were requested to complete an evaluation form in order to find out how the participants have enriched their knowledge in Integrating Gender Perspectives into Analysis and Planning in the Transport Sector.

All the participants were awarded with a certificate participants who attended the workshop.



6. Conclusion of the Workshop

Mr. Somathilake Kindelpitiya (Social Gender Resettlement Specialist / PIC-01) has made concluding remarks and Vote of Thank.

Annexes 1 – Agenda.

One day Workshop on integrating Gender Perspectives into Analysis and Planning in the Transport Sector

Agenda

Time	Agenda Item	Responsibility
08.30 – 09.00	Registration & pre training assessment	Foundation for Innovative Social Development
08.45 – 09.15	Morning Tea	
09.00 – 09.15	Welcome address Objective of the meeting & mainstreaming gender in ADB funded Projects	Mr Sudarshana Anojan Gender Specialist ADB
09.15 – 09.45	Gender Action Plan implementation	Team Leader –
09.45 – 10.00	Introduction to the Participants	Self-Introduction
10.00 – 11.00	Introduction to basic concepts of Gender Masculinity and femininity Discussions Activities	Foundation for Innovative Social Development
11.00 – 01.00	Gender as a development concern (Gender equality and equity) Discussions Activities	Foundation for Innovative Social Development
01.00 – 01.45	Lunch break	
01.45– 03.45	Gender and sectoral concerns	Foundation for Innovative Social Development
03.45- 04.00	Vote of thanks and Post training assessment	Foundation for Innovative Social Development
	Evening tea & wrap - up	

Annexes 2 – List of Participants.

සහභාගී වීමේ නාම ලේඛනය/ பங்குப்பற்றுனரின் பெயர் விபரம்/Participants list



වැඩසටහන/நிகழ்ச்சி/Programme ADB - Gender Training
 දිස්ත්‍රික්කය/மாவட்டம்/District Galle ස්ථානය/இடம்/Place Chief Secretary office
 ගම/கிராமம்/Village..... දිනය/திகதி/Date..... 12/06/2018
 වේලාව/நேரம்/Time 8:00 இருந்து/From..... දක්වා/வரை/To.....

අ.අ. ப.அ.அ.	නම/பெயர்	මැද/පිරිමි Male/ Female	තනතුර/பதவி	ලිපිනය/முகவரி	ජ.න.අංකය தே.அ.அ.இல	දු.අංකය தொ.பே.இல	අත්සන கையொப்பம்
1	K. R. Ajith Kumar	M	ES/Galle	RE office/Galle	651032857 V	0716-233003	
2	N. K. D. Abeyaratne	M	CACE ..	TL office - PLC-01	661320682 V	071-4877759	
3	K. Wickramasinghe	F	P.E G-3	RDA Elptiya	646631769 V	07739462719	
4	S. B. Darshana	M	ARE- G, G3	ARE office - Elptiya	801540104 V	071-0899567	
5	Roshan K. Rodrygo	M	ES	Mbl - ECC	781112801 V	071-0899567	
6	L. S. Gunasinghe	M	Grana military	123 rd Al-Sunawaratha	661112119 V 271844852	0718498552	
7	D. L. S. Karunaratne	F	Grana military	1330 Botoli Madala	816120470 V	0771110352	
8	Abdul Mawjib	M			781992334 V	0767950730	
9	A. A. A. A.	M	GO/SG LDA	1801D Ganesath Al-er	8522618036	0772072506	
✓	Thakshila Uyanjoda	F	AQS	Bope - Galle	828070968 V	0773468409	

සහභාගී වීමේ නාම ලේඛනය/ பங்குப்பற்றுனரின் பெயர் விபரம்/Participants list



ක්ෂේත්‍රය/நிகழ்ச்சி/Programme NDA - Gender Training
 දිස්ත්‍රික්කය/மாவட்டம்/District Galle ස්ථානය/இடம்/Place Chief Secretariat Office
 ග්‍රාම/ග්‍රාමය/Village..... දිනය/திகதி/Date 12/06/2018
 වේලාව/நேரம்/Time සිට/இருந்து/From..... දක්වා/வரை/To.....

අංක/பெயர்	කම/பெயர்	මැණෙ/பිරිමි Male/Female	පදව/பதவி	ලිපිනය/முகவரி	ජාතික නැ.නැ.නැ. தே.அ.அ.இல	දුරකථන தொ.பே.இல	අත්සන கையொப்பம்
1	C.P.R. වැට්ටේ	ඉබ්	EO	F.A. ප්‍රදර්ශන මධ්‍ය කොට්ඨාස, මල්ල	151421710018	0718921253	g
2	A.K.A.D. හිරිපොත	ගැහැණු	කෞතුක විකුණුම් කළමනාකරු	පාසා පිල්ලුර මහල, පාසාපොල අලුත්කොට්ඨාස	1989-08-16 837293537V	0771032415	Dulani
3	B.G.C. ජුනාදින	ගැහැණු	ESA	කොළඹ 05, පලමුව මල්ල	9159744060	0710435732	Alina
4	D. පර්වත	ඉබ්	PE	මාකුර පොළ	863221641V	0816541315	D.M.
5	M.A. සමනල සිංහ	ගැහැණු	EA - Galle	මල්ල මහල, පල්ලුර, මල්ල	906991632V	0719759951	Singh
6	හිමාංශු සිංහ	ගැහැණු	radio operator	"මුහුණතේ මල්ල", මල්ල, මල්ල	906924050V	076-7064546	himanshu
7	K.M.B. සුදාන	ගැහැණු	Secretary	පිටිය, කුරුම, පුරාණ	198661700100	0717417820	SV
8	මහේෂ් වර්මා	ගැහැණු	SAF Asst	දාන 9 නිකායාලය කොළඹ 05, මල්ල	915701029V	0710919529	Nish
9	කමලා ප්‍රසාද	ගැහැණු	ADS	පාසා මාලිගා කොට්ඨාස - මල්ල	828090768V	0773468407	Kamal
10	දිලිසි රත්න	ගැහැණු	CAD	මල්ල, කොළඹ මල්ල	817240658V	0772448417	Dilini

සහභාගී වීමේ නාම ලේඛනය/ பங்குப்பற்றுனரின் பெயர் விபரம்/Participants list



වැසිකටනය/நிகழ்ச்சி/Programme ADB - Gender Training
 දිස්ත්‍රික්කය/மாவட்டம்/District Galle ස්ථානය/இடம்/Place chief secretary office.
 ගම/கிராமம்/Village..... දිනය/நிகழ்/Date..... 12/06/2018
 පේලාව/நேரம்/Time සිට/இருந்து/From..... දක්වා/வரை/To.....

අ.න. (No.)	නම/பெயர்	ගenders/பெண் Male/ Female	තනතුර/பதவி	ලිපිනය/முகவரி	ජා.න.අංකය நே.அ.அ.இல	දු.අංකය தொ.பே.இல	අත්සන கையொப்பம்
1	මණ්ණ ඉමුද්ති	ගැහැණු	මල් කමන්දා	4/3, හිඟ පාර, මාලුල්ල	8068136990	0773225573	
2	මහේෂ්වරී ජයරත්න	නිරිත	පාලනික	පුරාණ මහා විහාර, මාලුල්ල	683620041	0775642301	
3	මහේෂ්වරී ජයරත්න	නිරිත	පාලනික	120/5, අගුණේ මාවත, මාලුල්ල	851030670	0773470268	
4	අනිල් විජේසේන	පිරිමි	පාලනික	180/10, පාලනික, මාලුල්ල	852261803	0772072556	
5	මහේෂ්වරී ජයරත්න	නිරිත	පාලනික	135/5, පාලනික, මාලුල්ල	731280363	0779088497	
6	මහේෂ්වරී ජයරත්න	නිරිත	පාලනික	පාලනික	493030701	071497143	
7	ප්‍රදීප් ජයරත්න	පිරිමි	පාලනික	පාලනික	762732483	0779463540	
8	මහේෂ්වරී ජයරත්න	නිරිත	පාලනික	පාලනික	652351026	0779461336	
9	මහේෂ්වරී ජයරත්න	නිරිත	පාලනික	පාලනික	621570021	0771766581	
10	අනිල් විජේසේන	පිරිමි	පාලනික	පාලනික	702543106		

සහභාගී වීමේ නාම ලේඛනය/ பங்குப்பற்றுனரின் பெயர் விபரம்/Participants list



වැඩසටහන/நிகழ்ச்சி/Programme ... ADB - Gender Training
 දිස්ත්‍රික්කය/மாவட்டம்/District ... Galle ... ස්ථානය/இடம்/Place ... Chief Secretary office
 ගම/ගிராமය/Village..... දිනය/திகதி/Date..... 12/06/2018
 වේලාව/நேரம்/Time සිට/இருந்து/From..... දක්වා/வரை/To.....

අංකය/No.	නම/பெயர்	මාලාව/பිරிதி Male/ Female	තනතුර/பதவி	தேவதா/முகவரி	ම.ක.අ.කය தே.அ.அ.இல	ද.අ.කය தொ.பே.இல	අත්සන கையொப்பம்
1	ස.ක. අර්ථ	ෆ	ප්‍රධාන	ප්‍රධාන	727802214	01845774	✓
2							
3							
4							
5							
6							
7							
8							
9							
10							

සහභාගී වීමේ නාම ලේඛනය/ பங்குப்பற்றுனரின் பெயர் விபரம்/Participants list



සැකසූ ක්‍රියා/நிகழ்ச்சி/Programme A & B Gender Training

දිස්ත්‍රික්කය/மாவட்டம்/District Chief Galle ස්ථානය/இடம்/Place Chief Secretariate office

ගම/கிராமம்/Village..... දිනය/திகதி/Date 12/06/2018

වේලාව/நேரம்/Time සිට/இருந்து/From..... දක්වා/வரை/To.....

අංකය/No	නම/பெயர்	මාලා/பெ.ම. Male/Female	තනතුර/பதவி	ලිපිනය/முகவரி	ජාතික අංකය/தே.அ.அ.இல	දුරකථන අංකය/தொ.பே.இல	අත්සන/අත්සන/සහසම්පූර්ණ
1	M. K. S. M. Dissanayake	M	Divisional Eng.	Divisional Eng. Office Thawalawa	621110535 V	077-3330921	
2	A. D. Wickramaratne	M	TO	Divisional office Thawalawa	760631043 V	0776507249	
3	H. K. Athula D. De Silva	M	TO	P.R.D.A., Galle	646315 640290315 V	0713510164	
4	P. C. Ranasinghe	M	Project Engineer	i Road (SP) RPA	762732483 V	0779463540	
5	SOMATHILAKA KINDELEPITIYA Somathilaka Kindelepitiya	M	GCRS	TL office	493030701 V	0914971432	
6	K. K. Nannayakkara	M	Act. Team Leader	RE - office (G)	652351026 V	0779461336	
7	S. R. Pathirana	M	PD - SP	No 76, 15th Avenue town Galle	621576021 V	077766581	
8	K. M. Amith Bandara	M	Act. EO		7525473106 V	0778996178	
9	W. G. Wipera	M	EE-RDA	RDA EE office - Galle	722280221 V	0718287768	
10	Chandrasena Ligana So	M	EE - Miniduma (RDA)	RDA EE's office Miniduma	551291033 V	0714676219	

සහභාගී වීමේ නාම ලේඛනය/ பங்குப்பற்றுனரின் பெயர் விபரம்/Participants list



වැඩසටහන/நிகழ்ச்சி/Programme ADB - Gender Training
 දිස්ත්‍රික්කය/மாவட்டம்/District Galle ස්ථානය/இடம்/Place Chief Secretary office
 ගම/கிராமம்/Village..... දිනය/திகதி/Date..... 12/06/2018
 වේලාව/நேரம்/Time සිට/இருந்து/From..... දක්වා/வரை/To.....

අ/ව. අංකය No. in list	නම/பெயர்	මාලා/பிணි Male/ Female	තනතුර/பதவி	ලිපිනය/முகவரி	ජා.සං.අංකය தே.அ.அ.இல	දු.අං.සං. தொ.பே.இல	අත්සන கையொப்பம்
1	K. Krishanika	Female	Engineer	RDA Galle	736580965V	0714464929	<i>[Signature]</i>
2	R. Sangeethan	male	Planning Engineer	M/E-LUL SI	931660748V	0765528906	<i>R. Sangeethan</i>
3	N.S.B.P. Gunawardena	male	Sen. Off	KDESH G1	857264340V	0718381551	<i>[Signature]</i>
✓	M.K.D.S. Sampath	Male	QAM	KDESH G1	892343814V	0770322434	<i>[Signature]</i>
✓	S.M.P. Wasanika	Male	E/O	KDESH	910880718V	0712693718	<i>[Signature]</i>
✓	M.P. Samarasinghe	Male	SK Engineer	KDAW	862662369V	0368010323	<i>[Signature]</i>
✓	K.L. Rupasinghe	male	EDPM	KDAW - G3	840922802V	0770209554	<i>[Signature]</i>
✓	P.A.K.P. Ponnamperna	Male	Project Manager	KDAW	197215240370	0723425644	<i>[Signature]</i>
✓	I.D. Samantha Kumara	Male	SO	KDAW - G3	691610713 V	0777-067563	<i>[Signature]</i>
11	P. Abeygunawardena	Male	P.H	KDAW - G2	820150819 V	0777-360976	<i>[Signature]</i>

සහභාගී වීමේ නාම ලේඛනය/ பங்குப்பற்றுனரின் பெயர் விபரம்/Participants list



ව්‍යාපෘති/நிகழ்ச்சி/Programme ADB - Gender Training
 දිස්ත්‍රික්කය/மாவட்டம்/District Galle ස්ථානය/இடம்/Place Chief secretary office
 ගම/கிராமம்/Village..... දිනය/திகதி/Date..... 12/06/2018
 වේලාව/நேரம்/Time සිට/இருந்து/From..... දක්වා/வரை/To.....

අ.නං. No.	නම/பெயர்	ගenders/பිංදු Male/ Female	තනතුර/பதவி	ලිපිනය/முகவரி	ම.ක.අ.ක தே.அ.அ.இல	දු.අ.ක தொ.பே.இல	අත්සන கையொப்பம்
1	M.M R Kumara	Male	T/O	ARE office (Gv) Galle	840243494v	078 3895-85	
2	E.K.S.silva	M	T/O	MGC ARE office Elipitiya	832142590v	0779470238	
3	S.M.W.S-shanthald	M	T/O	MGC ARE's office (as) Elipitiya	750780852V	0779062514	
4	U.G.Suman Dhees	M	T.O	කර්මා - 3	83192555v	0716299208	
5	N.S.Ra Pennewalu	M	SA:OFF	KDLSM G-1	572643409V	0718381551	
6	A.Keriyawansa	F	AND	PIC O1	73648573V	091-2278315	
7	Champa Kumudini	F	Secretary - 61	PTC OT	806813699v	07-3225593	
8	W.u. Dharmas	M	A/Os	KD AW	933313748V	077-6388293	
9	Krishna Sumanthana	F	CAS operator	MA Consultant	906924080v	076-7064846	
10	Shendana Jayawardhana	M	TO	MA-EC	168362004v	0775643351	

සහභාගී වීමේ නාම ලේඛනය/ பங்குப்பற்றுனரின் பெயர் விபரம்/Participants list



වැඩසටහන/திகழ்ச்சி/Programme ADB - Gender Training
 දිස්ත්‍රික්කය/மாவட்டம்/District Galle ස්ථානය/இடம்/Place Chief Secretary office
 ගම/විල්ල/Village..... දිනය/திகதி/Date..... 12/06/2018
 වේලාව/நேரம்/Time සිට/இருந்து/From..... දක්වා/வரை/To.....

අ/අංකය/தொ.அ.இல	නම/பெயர்	මස්ථාන/பිරி	තනතුර/பதவி	ලිපිනය/முகவரி	ජ.ව.අංකය/தொ.அ.இல	දුරකථන/தொ.பே.இல	අත්සන/கையொப்பம்
1	Prushka Hiranthi	F	PIB	FISH	925852414v	0766786300	AKK
2	A.k.s.m. gachri	m	PIA	FISH	912964760v	0717245332	gachri
3	Shirani Samanaseera	F	PO	FISH	737391666v	0778800198	Shirani
4							
5							
6							
7							
8							
9							
10							

A sample of Data Base (G3) – Land Donation

District : Galle
Contract Package : G3

File Serial No.	Name of Road	Road Information (Section 1)							Location Details (Section 2)					Present Occupant's Details (Section 3)				Reason for additional land requirement (Section 4)	Date of initial discussion	Progress of land donation (Section5)			Remarks (Section 6)				
		ID of Road	Road Category			Administrative details			Chainage		Side (LHS/ RHS)	GPS log		Average width of strip (m)	Ownership		Name			Address	View of occupent	Type of agreement Consent letter	MOU	Date Signing of agreement	Photo document ation	Special requests of occupent	Comment of PE/ SSO
			PS	PRDA	RDA	Name of PS	Name of DSD	Name and No. of GND	From	To		Northing	Easting		Clear Title	Title NOT Clear											
LD/SP/G3/ID4/01	Goluwamulla - Atakohota	2.4	No	Yes	No	Elpitiya	Elpitiya	Ganegoda	0+60	0+100	RHS	N 6°19.778'	E 80°09.059'	0.56	No	Yes	W.G.D. Chandrani	Chandrani,Goluwamulla,Ganegoda	Improve the shoulders and road pavement	11.10.2016	Positive	Yes	No	04.06.2016	G3/04/01	No	No
LD/SP/G3/ID4/02	Goluwamulla - Atakohota	2.4	No	Yes	No	Elpitiya	Elpitiya	Ganegoda	0+100	0+130	RHS	N 6°19.776'	E 80°09.055'	0.67	No	Yes	S.N.W.Wijesingha	Singhagiri,Goluwamulla,Ganegoda	Improve the shoulders and road pavement	11.10.2016	Positive	Yes	No	09.03.2016	G3/04/02	No	No
LD/SP/G3/ID41/01	Goluwamulla - Welimanna	2.41	Yes	No	No	Elpitiya	Elpitiya	Ganegoda	0+109	0+143	LHS	N 6°19.820'	E 80°09.144'	0.78	No	Yes	P.Sumanawathi	Goluwamulla,Ganegoda	Improve the shoulders and road pavement	11.10.2016	Positive	Yes	No	27.03.2017	G3/41/01	No	No
LD/SP/G3/ID41/02	Goluwamulla - Welimanna	2.41	Yes	No	No	Elpitiya	Elpitiya	Ganegoda	0+980	1+021	LHS	N 6°19.970'	E 80°09.500'	0.9	No	Yes	P.A.Somasiri	Welimanana,Goluwamulla,Ganegoda	Improve the shoulders and road pavement	11.10.2016	Positive	Yes	No	30.03.2016	G3/41/02	No	No
LD/SP/G3/ID41/03	Goluwamulla - Welimanna	2.41	Yes	No	No	Elpitiya	Elpitiya	Ganegoda	1+060	1+112	RHS	N 6°19.952'	E 80°09.546'	0.89	No	Yes	P.A.D.P.Wijerathne	Mahagedara,Goluwamulla,Ganegoda	Improve the shoulders and road pavement	11.10.2016	Positive	Yes	No	01.11.2016	G3/41/03	No	No
LD/SP/G3/ID41/04	Goluwamulla - Welimanna	2.41	Yes	No	No	Elpitiya	Elpitiya	Ganegoda	1+160	1+200	RHS	N 6°19.930'	E 80°09.567'	0.45	No	Yes	K.L.A.Kumara	No63,Karunagama,Ganegoda	Improve the shoulders and road pavement	11.10.2016	Positive	Yes	No	01.11.2016	G3/41/04	No	No
LD/SP/G3/ID41/05	Goluwamulla - Welimanna	2.41	Yes	No	No	Elpitiya	Elpitiya	Ganegoda	1+300	1+320	RHS	N 6°19.891'	E 80°09.649'	0.8	No	Yes	Mr. Udayakumar	No62,Karunagama,Ganegoda	Improve the shoulders and road pavement	11.10.2016	Positive	Yes	No	12.05.2016	G3/41/05	No	No
LD/SP/G3/ID44A/01	Elpitiya - Awiththawa	2.44A	No	Yes	No	Elpitiya	Elpitiya	Ganegoda	3+532	3+540	LHS	N 6°19.389'	E 80°09.473'	0.3	No	Yes	L. Preethilatha	Katapala. Ganegoda	Improve the shoulders and road pavement	23.06.2016	Positive	Yes	No	05.04.2017	G3/44A/01	No	No
LD/SP/G3/ID44A/02	Elpitiya - Awiththawa	2.44A	No	Yes	No	Elpitiya	Elpitiya	Ganegoda	4+650	4+670	RHS	N 6°19.795'	E 80°09.083'	0.3	No	Yes	Mrs. Irangani	Goluwamulla, Ganegoda	Improve the shoulders and road pavement	23.06.2016	Positive	Yes	No	05.04.2017	G3/44A/02	No	No
LD/SP/G3/ID44A/03	Elpitiya - Awiththawa	2.44A	No	Yes	No	Elpitiya	Elpitiya	Ganegoda	4+816	4+826	LHS	N 6°19.881'	E 80°09.051'	0.35	No	Yes	O.K.D. Renuka Tharangani	03rd post, Goluwamulla, Ganegoda	Improve the shoulders and road pavement	23.06.2016	Positive	Yes	No	05.04.2017	G3/44A/03	No	No
LD/SP/G3/ID44A/04	Elpitiya - Awiththawa	2.44A	No	Yes	No	Elpitiya	Elpitiya	Ganegoda	5+270	5+292	LHS	N 6°20.118'	E 80°08.982'	0.32	No	Yes	Chandana Prabhath Opatha	Mademaththa, Goluwamulla	Improve the shoulders and road pavement	23.06.2016	Positive	Yes	No	05.04.2017	G3/44A/04	No	No
LD/SP/G3/ID44A/05	Elpitiya - Awiththawa	2.44A	No	Yes	No	Elpitiya	Elpitiya	Ganegoda	5+305	5+313	LHS	N 6°20.122'	E 80°08.984'	0.3	No	Yes	H.D. Hemalatha	Mademaththa, Goluwamulla, Ganegoda	Improve the shoulders and road pavement	23.06.2016	Positive	Yes	No	05.04.2017	G3/44A/05	No	No
LD/SP/G3/ID44A/06	Elpitiya - Awiththawa	2.44A	No	Yes	No	Elpitiya	Elpitiya	Ganegoda	5+313	5+331.9	LHS	N 6°20.141'	E 80°08.984'	0.3	No	Yes	P.K. Nirmala	No. 76, Mademaththa, Goluwamulla, Ganegoda	Improve the shoulders and road pavement	23.06.2016	Positive	Yes	No	05.04.2017	G3/44A/06	No	No
LD/SP/G3/ID44A/07	Elpitiya - Awiththawa	2.44A	No	Yes	No	Elpitiya	Elpitiya	Ganegoda	5+331.9	5+353	LHS	N 6°20.165'	E 80°08.981'	0.32	No	Yes	O.K.D. Rohana	Mademaththa, Goluwamulla, Ganegoda	Improve the shoulders and road pavement	23.06.2016	Positive	Yes	No	05.04.2017	G3/44A/07	No	No
LD/SP/G3/ID44A/08	Elpitiya - Awiththawa	2.44A	No	Yes	No	Elpitiya	Elpitiya	Ganegoda	5+353	5+367	LHS	N 6°20.172'	E 80°08.983'	0.28	No	Yes	U. Ruwan Kumara	Mademaththa, Goluwamulla,	Improve the shoulders and road pavement	23.06.2016	Positive	Yes	No	05.04.2017	G3/44A/08	No	No
LD/SP/G3/ID44A/09	Elpitiya - Awiththawa	2.44A	No	Yes	No	Elpitiya	Elpitiya	Ganegoda	5+860	5+973	LHS	N 6°20.420'	E 80°08.926'	0.3	No	Yes	P.K.D. Lalith	Amuna Stores, Goluwamulla, Ganegoda	Improve the shoulders and road pavement	23.06.2016	Positive	Yes	No	05.04.2017	G3/44A/09 G3/44A/10	Boundary wall (5+875 - 5+913)	Agreed
								Ganegoda	5+875	5+973	LHS	N 6°20.421'	E 80°08.923'	0.29													
LD/SP/G3/ID44A/10	Elpitiya - Awiththawa	2.44A	No	Yes	No	Elpitiya	Elpitiya	29 B, Opatha	7+378	7+410	LHS	N 6°21.140'	E 80°09.186'	0.22	No	Yes	O. V. Manju Sri Udaya Kumara	No: 411, Opatha, Ganegoda	Improve the shoulders and road pavement	23.06.2016	Positive	Yes	No	30.01.2017	G3/44A/11	Boundary Wall	Agreed
LD/SP/G3/ID44A/11	Elpitiya - Awiththawa	2.44A	No	Yes	No	Elpitiya	Elpitiya	29 B, Opatha	7+635	7+650	LHS	N 6°21.248'	E 80°09.149'	0.21	No	Yes	O. P. W. Somapala	438A, Opatha, Ganegoda	Improve the shoulders and road pavement	23.06.2016	Positive	Yes	No	28.01.2017	G3/44A/12	Boundary Wall	Agreed
LD/SP/G3/ID44A/12	Elpitiya - Awiththawa	2.44A	No	Yes	No	Elpitiya	Elpitiya	29 B, Opatha	7+690	7+705	LHS	N 6°21.274'	E 80°09.128'	0.32	No	Yes	H. A. Harischandra	Opatha, Ganegoda	Improve the shoulders and road pavement	23.06.2016	Positive	Yes	No	20.07.2016	G3/44A/13	Boundary Wall	Agreed
LD/SP/G3/ID44A/13	Elpitiya - Awiththawa	2.44A	No	Yes	No	Elpitiya	Elpitiya	26D, Ihala Nagenahira	7+906	7+915	LHS	N 6°21.335'	E 80°09.025'	0.3	No	Yes	Somasiri Lyanage	No. 27, Dipa Road, Alpitiya	Improve the shoulders and road pavement	23.06.2016	Positive	Yes	No	08.09.2016	G3/44A/14	No	No
LD/SP/G3/ID44A/14	Elpitiya - Awiththawa	2.44A	No	Yes	No	Elpitiya	Elpitiya	29A, Awiththawa	8+580	8+610	RHS	N 6°21.636'	E 80°08.853'	0.3	No	Yes	Ajith Sirimanna	"Pushpa sirin", 483/A, Awiththawa, Ganegoda	Improve the shoulders and road pavement	23.06.2016	Positive	Yes	No	11.09.2016	G3/44A/15	No	No
LD/SP/G3/ID44A/15	Elpitiya - Awiththawa	2.44A	No	Yes	No	Elpitiya	Elpitiya	29A, Awiththawa	8+868	8+913	RHS	N 6°21.782'	E 80°08.820'	0.3	No	Yes	N. Sirimanna	Awiththawaththa, Awiththawa, Ganegoda	Improve the shoulders and road pavement	23.06.2016	Positive	Yes	No	24.09.2016	G3/44A/16	No	No
LD/SP/G3/ID44A/16	Elpitiya - Awiththawa	2.44A	No	Yes	No	Elpitiya	Elpitiya	29A, Awiththawa	8+940	8+960	RHS	N 6°21.823'	E 80°08.801'	0.32	No	Yes	U. Rathnapala	Naduwaaththa, Awiththawa, Ganegoda	Improve the shoulders and road pavement	23.06.2016	Positive	Yes	No	24.09.2016	G3/44A/17	No	No
LD/SP/G3/ID44A/17	Elpitiya - Awiththawa	2.44A	No	Yes	No	Elpitiya	Elpitiya	29A, Awiththawa	8+960	8+982	RHS	N 6°21.848'	E 80°08.793'	0.3	No	Yes	U. Disanayaka	Naduwaaththa, Awiththawa, Ganegoda	Improve the shoulders and road pavement	23.06.2016	Positive	Yes	No	24.09.2016	G3/44A/18	No	No
LD/SP/G3/ID44A/18	Elpitiya - Awiththawa	2.44A	No	Yes	No	Elpitiya	Elpitiya	29A, Awiththawa	9+020	9+030	RHS	N 6°21.874'	E 80°08.790'	0.3	No	Yes	P.W.R. Pathirana	Awiththawa, Ganegoda	Improve the shoulders and road pavement	23.06.2016	Positive	Yes	No				

File Serial No.	Name of Road	Road Information (Section 1)							Location Details (Section 2)					Present Occupant's Details (Section 3)				Reason for additional land requirement (Section 4)	Date of initial discussion	Progress of land donation (Section 5)			Remarks (Section 6)				
		ID of Road	Road Category			Administrative details			Chainage		Side (LHS/ RHS)	GPS log		Average width of strip (m)	Ownership Clear Title	Name	Address			View of occupent	Type of agreement Consent letter	MOU	Date Signing of agreement	Photo document ation	Special requests of occupent	Comment of PE/ SSO	
			PS	PRDA	RDA	Name of PS	Name of DSD	Name and No. of GND	From	To		Northing	Easting														
LD/SP/G3/ID53/25	Batapola Dorala Junction to Batapola Dorala Junction	2.53	Yes	No	No	Ambalang oda	Ambalang oda	Batapola	0+794	0+810	RHS	N 6°14.273'	E 80°08.083'	0.3	No	Yes	A.G.Siripala	Kothchagala,Batapola	Improve the shoulders and road pavement	20.05.2017	Positive	Yes	No	08.08.2017	G3/53/25	No	No
LD/SP/G3/ID53/26	Batapola Dorala Junction to Kiriwetiya Road Batapola Dorala Junction	2.53	Yes	No	No	Ambalang oda	Ambalang oda	Batapola	0+810	0+822.35	RHS	N 6°14.276'	E 80°08.074'	0.3	No	Yes	S.Priyanka Sanjeevani	Kothchagala,Batapola	Improve the shoulders and road pavement	20.05.2017	Positive	Yes	No	08.08.2017	G3/53/26	No	No
LD/SP/G3/ID53/27	Batapola Dorala Junction to Kiriwetiya Road Batapola Dorala Junction	2.53	Yes	No	No	Ambalang oda	Ambalang oda	Batapola	0+822.5	0+890	RHS	N 6°14.278'	E 80°08.066'	0.32	No	Yes			Improve the shoulders and road pavement	20.05.2017	Positive	Yes	No	08.08.2017	G3/53/27	No	No
LD/SP/G3/ID53/28	Batapola Dorala Junction to Kiriwetiya Road Batapola Dorala Junction	2.53	Yes	No	No	Ambalang oda	Ambalang oda	Batapola	0+822.5	0+935	LHS	N 6°14.280'	E 80°08.061'	0.31	No	Yes			Improve the shoulders and road pavement	20.05.2017	Positive	Yes	No	08.08.2017	G3/53/28	No	No
LD/SP/G3/ID53/29	Batapola Dorala Junction to Kiriwetiya Road Batapola Dorala Junction	2.53	Yes	No	No	Ambalang oda	Ambalang oda	Batapola	0+890	0+910	RHS	N 6°14.295'	E 80°08.035'	0.3	No	Yes	H.D.Sunimal	Akkara30,Kiriwetiya,Batapola	Improve the shoulders and road pavement	20.05.2017	Positive	Yes	No	08.08.2017	G3/53/29	No	No
LD/SP/G3/ID53/30	Batapola Dorala Junction to Kiriwetiya Road Batapola Dorala Junction	2.53	Yes	No	No	Ambalang oda	Ambalang oda	Batapola	0+910	0+964.5	RHS	N 6°14.302'	E 80°08.027'	0.34	No	Yes			Improve the shoulders and road pavement	20.05.2017	Positive	Yes	No	08.08.2017	G3/53/30	No	No
LD/SP/G3/ID53/31	Batapola Dorala Junction to Kiriwetiya Road Batapola Dorala Junction	2.53	Yes	No	No	Ambalang oda	Ambalang oda	Batapola	0+935	0+958	LHS	N 6°14.306'	E 80°08.015'	0.3	No	Yes			Improve the shoulders and road pavement	20.05.2017	Positive	Yes	No	08.08.2017	G3/53/31	No	No
LD/SP/G3/ID53/32	Batapola Dorala Junction to Kiriwetiya Road Batapola Dorala Junction	2.53	Yes	No	No	Ambalang oda	Ambalang oda	Batapola	0+960	0+972	LHS	N 6°14.309'	E 80°08.001'	0.3	No	Yes			Improve the shoulders and road pavement	20.05.2017	Positive	Yes	No	08.08.2017	G3/53/32	No	No
LD/SP/G3/ID53/33	Batapola Dorala Junction to Kiriwetiya Road Batapola Dorala Junction	2.53	Yes	No	No	Ambalang oda	Ambalang oda	Batapola	0+972	0+998	LHS	N 6°14.310'	E 80°07.995'	0.34	No	Yes			Improve the shoulders and road pavement	20.05.2017	Positive	Yes	No	08.08.2017	G3/53/33	No	No
LD/SP/G3/ID53/34	Batapola Dorala Junction to Kiriwetiya Road Batapola Dorala Junction	2.53	Yes	No	No	Ambalang oda	Ambalang oda	Batapola	1+000	1+015	LHS	N 6°14.306'	E 80°07.015'	0.4	No	Yes	W.Nandasiri	Kothchagala,Batapola	Improve the shoulders and road pavement	20.05.2017	Positive	Yes	No	08.08.2017	G3/53/34	No	No
LD/SP/G3/ID53/35	Batapola Dorala Junction to Kiriwetiya Road Batapola Dorala Junction	2.53	Yes	No	No	Ambalang oda	Ambalang oda	Batapola	1+040	1+077	RHS	N 6°14.309'	E 80°07.001'	0.45	No	Yes	M.H.Gayantha Raweendra	Kothchagala,Kirimatiya HandiyaBatapola	Improve the shoulders and road pavement	20.05.2017	Positive	Yes	No	08.08.2017	G3/53/35	No	No
LD/SP/G3/ID53/36	Batapola Dorala Junction to Kiriwetiya Road Batapola Dorala Junction	2.53	Yes	No	No	Ambalang oda	Ambalang oda	Batapola	1+045	1+070	LHS	N 6°14.310'	E 80°07.995'	0.34	No	Yes			Improve the shoulders and road pavement	20.05.2017	Positive	Yes	No	08.08.2017	G3/53/36	No	No
LD/SP/G3/ID53/37	Batapola Dorala Junction to Kiriwetiya Road Batapola Dorala Junction	2.53	Yes	No	No	Ambalang oda	Ambalang oda	Batapola	1+084	1+100	LHS	N 6°14.314'	E 80°07.934'	0.3	No	Yes			Improve the shoulders and road pavement	20.05.2017	Positive	Yes	No	08.08.2017	G3/53/37	No	No
LD/SP/G3/ID53/38	Batapola Dorala Junction to Kiriwetiya Road Batapola Dorala Junction	2.53	Yes	No	No	Ambalang oda	Ambalang oda	Batapola	1+077	1+091	RHS	N 6°14.313'	E 80°07.931'	0.32	No	Yes	H.W.Namal Pushpakumara	No04,Kondagala Para,Kirimatiya,Batapola	Improve the shoulders and road pavement	20.05.2017	Positive	Yes	No	08.08.2017	G3/53/38	No	No
LD/SP/G3/ID53/39	Batapola Dorala Junction to Kiriwetiya Road Batapola Dorala Junction	2.53	Yes	No	No	Ambalang oda	Ambalang oda	Batapola	1+091	1+105	RHS	N 6°14.312'	E 80°07.927'	0.3	No	Yes			Improve the shoulders and road pavement	20.05.2017	Positive	Yes	No	08.08.2017	G3/53/39	No	No
LD/SP/G3/ID53/40	Batapola Dorala Junction to Kiriwetiya Road Batapola Dorala Junction	2.53	Yes	No	No	Ambalang oda	Ambalang oda	Batapola	1+111	1+133	RHS	N 6°14.312'	E 80°07.923'	0.5	No	Yes	M.H.Padmakirthi	Kirimatiya,Batapola	Improve the shoulders and road pavement	20.05.2017	Positive	Yes	No	08.08.2017	G3/53/40	No	No
LD/SP/G3/ID53/41	Batapola Dorala Junction to Kiriwetiya Road Batapola Dorala Junction	2.53	Yes	No	No	Ambalang oda	Ambalang oda	Batapola	1+105	1+133	LHS	N 6°14.311'	E 80°07.924'	0.6	No	Yes			Improve the shoulders and road pavement	20.05.2017	Positive	Yes	No	08.08.2017	G3/53/41	No	No
LD/SP/G3/ID56/01	Kahawa - Galduwa Road	2.56	Yes	No	No	Hikkaduwa	Hikkaduwa	Galduwa	0+010	0+080	RHS	N 6°11.336'	E 80°04.817'	0.65	No	Yes	M.D.Lilarathne	Wijaya Niwasa,Weregoda,Kahawa	Improve the shoulders and road pavement	16.10.2016	Positive	Yes	No	13.02.2017	G3/56/01	No	No
LD/SP/G3/ID56/02	Kahawa - Galduwa Road	2.56	Yes	No	No	Hikkaduwa	Hikkaduwa	Galduwa	0+110	0+125	LHS	N 6°11.387'	E 80°04.801'	0.3	No	Yes	W.G.Wasantha Dayan	No75/8,Galduwa Para,Kahawa	Improve the shoulders and road pavement	16.10.2016	Positive	Yes	No	21.02.2017	G3/56/02	No	No
LD/SP/G3/ID56/03	Kahawa - Galduwa Road	2.56	Yes	No	No	Hikkaduwa	Hikkaduwa	Galduwa	1+188	0+202	LHS	N 6°11.438'	E 80°04.792'	0.32	No	Yes	H.G.Kamal Karunathilaka	Kopiwatta,Galduwa Para,Kahawa	Improve the shoulders and road pavement	16.10.2016	Positive	Yes	No	20.02.2017	G3/56/03	No	No
LD/SP/G3/ID56/04	Kahawa - Galduwa Road	2.56	Yes	No	No	Hikkaduwa	Hikkaduwa	Galduwa	0+290	0+320	LHS	N 6°11.483'	E 80°04.779'	0.46	No	Yes	E.Piyadasa	Galduwa Para,Weregoda,Kahawa	Improve the shoulders and road pavement	16.10.2016	Positive	Yes	No	20.02.2017	G3/56/04	No	No
LD/SP/G3/ID56/05	Kahawa - Galduwa Road	2.56	Yes	No	No	Hikkaduwa	Hikkaduwa	Galduwa	0+497	0+510	RHS	N 6°11.596'	E 80°04.804'	0.5	No	Yes	A.T.K.Wimalawathi	Kahawa,Galduwa	Improve the shoulders and road pavement	16.10.2016	Positive	Yes	No	26.11.2016	G3/56/05	No	No
LD/SP/G3/ID56/06	Kahawa - Galduwa Road	2.56	Yes	No	No	Hikkaduwa	Hikkaduwa	Galduwa	0+654	0+700	RHS	N 6°11.662'	E 80°04.782'	0.65	No	Yes	W.K.J.De Soysa	"Sihlasa",Galduwa,Kahawa	Improve the shoulders and road pavement	16.10.2016	Positive	Yes	No	04.02.2017	G3/56/06	No	No
LD/SP/G3/ID56/07	Kahawa - Galduwa Road	2.56	Yes	No	No	Hikkaduwa	Hikkaduwa	Galduwa	0+727	0+736	LHS	N 6°11.701'	E 80°04.760'	0.7	No	Yes	K.L.G.Chandrani	"Sirisewana",Galduwa,Kahawa	Improve the shoulders and road pavement	16.10.2016	Positive	Yes	No	07.02.2017	G3/56/07	No	No
LD/SP/G3/ID56/08	Kahawa - Galduwa Road	2.56	Yes	No	No	Hikkaduwa	Hikkaduwa	Galduwa	0+736	0+737	LHS	N 6°11.702'	E 80°04.760'	0.6	No	Yes	Paththinivasan Lal	Galduwa,Kahawa	Improve the shoulders and road pavement	16.10.2016	Positive	Yes	No	06.02.2017	G3/56/08	No	No
LD/SP/G3/ID56/09	Kahawa - Galduwa Road	2.56	Yes	No	No	Hikkaduwa	Hikkaduwa	Galduwa	0+737	0+765	LHS	N 6°11.705'	E 80°04.758'	0.3	No	Yes	D.K.Kodithuwakku	"Manjula",Galduwa,Kahawa	Improve the shoulders and road pavement	16.10.2016	Positive	Yes	No	06.02.2017	G3/56/09	No	No
LD/SP/G3/ID56/10	Kahawa -																										

File Serial No.	Name of Road	ID of Road	Road Information (Section 1)			Administrative details			Location Details (Section 2)					Present Occupant's Details (Section 3)				Reason for additional land requirement (Section 4)	Date of initial discussion	Progress of land donation (Section5)				Photo documentation	Remarks (Section 6)		
			PS	PRDA	RDA	Name of PS	Name of DSD	Name and No. of GND	From	To	Side (LHS/ RHS)	Northing	Easting	Average width of strip (m)	Ownership Clear Title	Title NOT Clear	Name			Address	View of occupent	Type of agreement Consent letter	MOU		Date Signing of agreement	Special requests of occupent	Comment of PE/ SSO
LD/SP/G3/ID48/02	Waduwellitiya Mukthawela Junction - Putuwagoda	48	Yes	No	No	Wellitiya Diwithura	Wellitiya Diwithura	Unanwitiya	1+035	1+060	RHS	6.18467	80.239054	0.4	No	Yes	K.A.S.A.Amarakon	"Sisara",Waduwellitiya,Unanwitiya	Improve the shoulders and road pavement	12.09.2016	Positive	Yes	No	11.11.2016	G3/48/02	No	No
LD/SP/G3/ID48/03	Waduwellitiya Mukthawela Junction - Putuwagoda	48	Yes	No	No	Wellitiya Diwithura	Wellitiya Diwithura	Unanwitiya	1+054	1+050	LHS	6.184528	80238045	0.4	No	Yes	B.A.Witharana	Korottegedarawatta,Waduwellitiya,Unanwitiya	Improve the shoulders and road pavement	12.09.2016	Positive	Yes	No	11.11.2016	G3/48/03	No	No
LD/SP/G3/ID48/04	Waduwellitiya Mukthawela Junction - Putuwagoda	48	Yes	No	No	Wellitiya Diwithura	Wellitiya Diwithura	Unanwitiya	1+060	1+075	RHS	6.18519	80238497	0.3	No	Yes	K.M.G.K.Nilanga	Dodanhenha,Waduwellitiya,Unanwitiya	Improve the shoulders and road pavement	12.09.2016	Positive	Yes	No	11.11.2016	G3/48/04	No	No
LD/SP/G3/ID48/05	Waduwellitiya Mukthawela Junction - Putuwagoda	48	Yes	No	No	Wellitiya Diwithura	Wellitiya Diwithura	Unanwitiya	1+195	1+242	LHS	6.183367	80.238415	0.31	No	Yes	G.E.Kongahage	Waduwellitiya,Unanwitiya	Improve the shoulders and road pavement	12.09.2016	Positive	Yes	No	11.11.2016	G3/48/05	No	No
									1+100	1+115	RHS														G3/48/06		
LD/SP/G3/ID48/06	Waduwellitiya Mukthawela Junction - Putuwagoda	48	Yes	No	No	Wellitiya Diwithura	Wellitiya Diwithura	Unanwitiya	1+115	1+185	LHS	6.184329	80.238665	0.31	No	Yes	G.V.P.Chethiyawaradhana	Thanahenawatta,Waduwellitiya,Unanwitiya	Improve the shoulders and road pavement	12.09.2016	Positive	Yes	No	11.11.2016	G3/48/07	No	No
LD/SP/G3/ID48/07	Waduwellitiya Mukthawela Junction - Putuwagoda	48	Yes	No	No	Wellitiya Diwithura	Wellitiya Diwithura	Unanwitiya	1+160	1+195	LHS	6.184136	80.238614	0.32	No	Yes	T.G.J.Gunasekara	Waduwellitiya,Thanahenawatta,Unanwitiya	Improve the shoulders and road pavement	12.09.2016	Positive	Yes	No	11.11.2016	G3/48/08	No	No
LD/SP/G3/ID48/08	Waduwellitiya Mukthawela Junction - Putuwagoda	48	Yes	No	No	Wellitiya Diwithura	Wellitiya Diwithura	Unanwitiya	1+200	1+275	RHS	6.183742	80.238564	0.3	No	Yes	G.V.Wanshapala	Aluthgedara,Paragahaduwa,Waduwellitiya,Unanwitiya	Improve the shoulders and road pavement	12.09.2016	Positive	Yes	No	11.11.2016	G3/48/09	No	No
LD/SP/G3/ID48/09	Waduwellitiya Mukthawela Junction - Putuwagoda	48	Yes	No	No	Wellitiya Diwithura	Wellitiya Diwithura	Unanwitiya	1+242	1+275	LHS	6.183696	80.238456	0.34	No	Yes	K.Abenayaka	Arachchigedara,Waduwellitiya,Unanwitiya	Improve the shoulders and road pavement	12.09.2016	Positive	Yes	No	11.11.2016	G3/48/10	No	No
LD/SP/G3/ID43/01	Pinkahana Puwakdola Road	43	Yes	No	No	Elpitiya	Elpitiya	Pinkahana Kahaduwa	0+350	0+520	RHS	6.21519	80.20081	0.35	No	Yes	K.P.G.Sunil	Pansala Asala,Pinkahana,Kahaduwa	Improve the shoulders and road pavement	13.07.2016	Positive	Yes	No	11.09.2016	G3/43/01	No	No
LD/SP/G3/ID43/02	Pinkahana Puwakdola Road	43	Yes	No	No	Elpitiya	Elpitiya	Pinkahana Kahaduwa	0+350	0+520	RHS	6.215703	80.20081	0.6	No	Yes	P.Vijenayaka	Wijaya Niwasa, Godallawatt,Pinkahana,Kahaduwa	Improve the shoulders and road pavement	13.07.2016	Positive	Yes	No	14.09.2016	G3/43/02	No	No
LD/SP/G3/ID43/03	Pinkahana Puwakdola Road	43	Yes	No	No	Elpitiya	Elpitiya	Pinkahana Kahaduwa	0+350	0+520	RHS	6.215816	80.200836	0.9	No	Yes	S.Ranasingha	Pinkahana,Kahaduwa	Improve the shoulders and road pavement	13.07.2016	Positive	Yes	No	14.09.2016	G3/43/03	No	No
LD/SP/G3/ID43/04	Pinkahana Puwakdola Road	43	Yes	No	No	Elpitiya	Elpitiya	Pinkahana Kahaduwa	0+350	0+520	RHS	6.2152	80.200374	0.45	No	Yes	G.Sooriyaarachchi	Gunasewana,Pinkahana,Kahaduwa	Improve the shoulders and road pavement	13.07.2016	Positive	Yes	No	14.09.2016	G3/43/04	No	No
LD/SP/G3/ID43/05	Pinkahana Puwakdola Road	43	Yes	No	No	Elpitiya	Elpitiya	Pinkahana Kahaduwa	0+350	0+520	RHS	6.215731	80.20106	0.34	No	Yes	Amarasiri Senanayaka	Pinkahana,Kahaduwa	Improve the shoulders and road pavement	13.07.2016	Positive	Yes	No	11.09.2016	G3/43/05	No	No
LD/SP/G3/ID43/06	Pinkahana Puwakdola Road	43	Yes	No	No	Elpitiya	Elpitiya	Pinkahana Kahaduwa	0+350	0+520	LHS	6.215346	80.200902	0.29	No	Yes	k.p.g.Rathna Kirithi	Pinkahana,Kahaduwa	Improve the shoulders and road pavement	13.07.2016	Positive	Yes	No	11.09.2016	G3/43/06	No	No
LD/SP/G3/ID43/07	Pinkahana Puwakdola Road	43	Yes	No	No	Elpitiya	Elpitiya	Pinkahana Kahaduwa	0+800	0+850	RHS	6.214828	80.201029	0.34	No	Yes	T.T/B.Siriyaewathi	Puwakdola,Pinkahana,Kahaduwa	Improve the shoulders and road pavement	13.07.2016	Positive	Yes	No	14.09.2016	G3/43/07	No	No
LD/SP/G3/ID43/08	Pinkahana Puwakdola Road	43	Yes	No	No	Elpitiya	Elpitiya	Pinkahana Kahaduwa	0+800	0+850	LHS	6.211478	80.20024	0.3	No	Yes	P.M.Lpriyantha	Puwakdola,Pinkahana,Kahaduwa	Improve the shoulders and road pavement	13.07.2016	Positive	Yes	No	14.09.2016	G3/43/08	No	No
LD/SP/G3/ID43/09	Pinkahana Puwakdola Road	43	Yes	No	No	Elpitiya	Elpitiya	Pinkahana Kahaduwa	1+110	1+180	RHS	6.212173	80.201142	0.4	No	Yes	V.M.Vijithasena	"Vijitha", Puwakdola,Pinkahana,Kahaduwa	Improve the shoulders and road pavement	13.07.2016	Positive	Yes	No	15.09.2016	G3/43/09	No	No
LD/SP/G3/ID43/10	Puwakdola Road	43	Yes	No	No	Elpitiya	Elpitiya	Pinkahana Kahaduwa	2+140	2+160	RHS	6.206525	80.209342	0.5	No	Yes	D.W.Gunapala	Unegoda,Kandawatta,Pinkahana,Kahaduwa	Improve the shoulders and road pavement	13.07.2016	Positive	Yes	No	25.09.2016	G3/43/10	No	No
LD/SP/G3/ID43/11	Pinkahana Puwakdola Road	43	Yes	No	No	Elpitiya	Elpitiya	Pinkahana Kahaduwa	2+040	2+080	LHS	6.207014	80.209461	0.31	No	Yes	J.Karunadasa	Kuttiyawatta,Agaliya	Improve the shoulders and road pavement	13.07.2016	Positive	Yes	No	25.09.2016	G3/43/11	No	No
LD/SP/G3/ID43/12	Pinkahana Puwakdola Road	43	Yes	No	No	Elpitiya	Elpitiya	Pinkahana Kahaduwa	2+470	2+500	BS	6.205521	80.212014	0.32	No	Yes	P.M.Chandradasa	Kuttiyawatta,Agaliya	Improve the shoulders and road pavement	13.07.2016	Positive	Yes	No	25.09.2016	G3/43/12	No	No
LD/SP/G3/ID43/13	Pinkahana Puwakdola Road	43	Yes	No	No	Elpitiya	Elpitiya	Pinkahana Kahaduwa	0+000	0+080	RHS	6.217711	80.202855	0.3	No	Yes	K.P.G.S.Bandula	Pansala Asala,Pinkahana,Kahaduwa	Improve the shoulders and road pavement	13.07.2016	Positive	Yes	No	14.09.2016	G3/43/13	No	No
LD/SP/G3/ID51/01	Wellibokkawa-Banwelgodella	51	Yes	No	No	Gonapinuwa	Gonapinuwa	Aluthwala	0+179	0+330	RHS	6.190004	80.139986	0.3	No	Yes	J.B.Champa Devika	Madusha,Banwelgodella,Aluthwala	Improve the shoulders and road pavement	22.09.2016	Positive	Yes	No	04.02.2017	G3/51/01	No	No
LD/SP/G3/ID51/02	Wellibokkawa-Banwelgodella	51	Yes	No	No	Gonapinuwa	Gonapinuwa	Aluthwala	0+660	0+696	LHS	6.188441	80.136463	0.34	No	Yes	G.G.Dayawathi	Banwelgodella,Aluthwala	Improve the shoulders and road pavement	22.09.2016	Positive	Yes	No	22.02.2017	G3/51/02	No	No
LD/SP/G3/ID51/03	Wellibokkawa-Banwelgodella	51	Yes	No	No	Gonapinuwa	Gonapinuwa	Aluthwala	0+740	0+768	LHS	6.188456	80.13548	0.32	No	Yes	D.M.Raytin	Sampath,Banwelgdella,Aluthwala	Improve the shoulders and road pavement	22.09.2016	Positive	Yes	No	22.02.2017	G3/51/03	No	No
LD/SP/G3/ID51/04	Wellibokkawa-Banwelgodella	51	Yes	No	No	Gonapinuwa	Gonapinuwa	Aluthwala	0+630	0+660	LHS	6.188361	80.136524	0.32	No	Yes	K.K.Thilakawansa	Banwelgodella,Aluthwala	Improve the shoulders and road pavement	22.09.2016	Positive	Yes	No	24.02.2017	G3/51/04	No	No
LD/SP/G3/ID51/05	Wellibokkawa-Banwelgodella	51	Yes	No	No	Gonapinuwa	Gonapinuwa	Aluthwala	0+768	0+790	RHS	6.88513	80.135061	0.45	No	Yes	K.H.L.S.Piyathilaka	Banwelgodella,Aluthwala	Improve the shoulders and road pavement	22.09.2016	Positive	Yes	No	30.08.2016	G3/51/05	No	No
LD/SP/G3/ID51/06	Wellibokkawa-Banwelgodella	51	Yes	No	No	Gonapinuwa																					

File Serial No.	Name of Road	ID of Road	Road Information (Section 1)						Location Details (Section 2)						Present Occupant's Details (Section 3)				Reason for additional land requirement (Section 4)	Date of initial discussion	Progress of land donation (Section 5)				Remarks (Section 6)		
			Road Category			Administrative details			Chainage		Side (LHS/ RHS)	GPS log		Average width of strip (m)	Ownership		Name	Address			View of occupent	Type of agreement Consent letter	MOU	Date Signing of agreement	Photo document ation	Special requests of occupent	Comment of PE/ SSO
			PS	PRDA	RDA	Name of PS	Name of DSD	Name and No. of GND	From	To		Northing	Easting		Clear Title	Title NOT Clear											
LD/SP/G3/ID49/11	Manampita - Dehigaha Bedda Road	49	Yes	No	No	Gonapinu wala	Gonapinu wala	Mitiyagoda	0+438	0+501.5	RHS	6.195116	80.129471	0.5	No	Yes	N.K.H.Jayasena	Manpita,Dehigahabedda,Mitiyagoda	Improve the shoulders and road pavement	22.12.2016	Positive	Yes	No	20.03.2017	G3/49/16	No	No
LD/SP/G3/ID49/12	Manampita - Dehigaha Bedda Road	49	Yes	No	No	Gonapinu wala	Gonapinu wala	Mitiyagoda	0+820	0+964	RHS	6.193586	80.130041	0.8	No	Yes	K.A.Kanthi	Dehigahabedda,Mitiyagoda	Improve the shoulders and road pavement	22.12.2016	Positive	Yes	No	20.03.2017	G3/49/17	No	No
LD/SP/G3/ID49/13	Manampita - Dehigaha Bedda Road	49	Yes	No	No	Gonapinu wala	Gonapinu wala	Mitiyagoda	0+501	0+522	RHS	6.193631	80.130038	0.7	No	Yes	Vjaya Alwis	"Thiak",Dehigahabedda,Mitiyagoda	Improve the shoulders and road pavement	22.12.2016	Positive	Yes	No	20.03.2017	G3/49/18 G3/49/19	No	No
LD/SP/G3/ID49/14	Manampita - Dehigaha Bedda Road	49	Yes	No	No	Gonapinu wala	Gonapinu wala	Mitiyagoda	0+504	0+550	LHS	6.19361	80.129935	0.3	No	Yes	K.W.D.Dharmawardhana	Dehigahabedda,Manampita,Mitiyagoda	Improve the shoulders and road pavement	22.12.2016	Positive	Yes	No	20.03.2017	G3/49/20	No	No
LD/SP/G3/ID49/15	Manampita - Dehigaha Bedda Road	49	Yes	No	No	Gonapinu wala	Gonapinu wala	Mitiyagoda	0+562	0+600	RHS	6.193475	80.129838	0.32	No	Yes	W.M.Ruwan	Dehigahabedda,Manampita,Mitiyagoda	Improve the shoulders and road pavement	22.12.2016	Positive	Yes	No	20.03.2017	G3/49/21 G3/49/22	No	No
LD/SP/G3/ID49/16	Manampita - Dehigaha Bedda Road	49	Yes	No	No	Gonapinu wala	Gonapinu wala	Mitiyagoda	0+600	0+646	RHS	6.193254	80.129533	0.3	No	Yes	K.V.Thilak Nandasiri	Dehigahabedda,Mitiyagoda	Improve the shoulders and road pavement	22.12.2016	Positive	Yes	No	20.03.2017	G3/49/23	No	No
LD/SP/G3/ID49/17	Manampita - Dehigaha Bedda Road	49	Yes	No	No	Gonapinu wala	Gonapinu wala	Mitiyagoda	0+687	0+730	RHS	6.193256	80.12935	0.6	No	Yes	K.A.Kanthi	Dehigahabedda,Manampita,Mitiyagoda	Improve the shoulders and road pavement	22.12.2016	Positive	Yes	No	20.03.2017	G3/49/24	No	No
LD/SP/G3/ID49/18	Manampita - Dehigaha Bedda Road	49	Yes	No	No	Gonapinu wala	Gonapinu wala	Mitiyagoda	0+730	0+798	RHS	6.192658	80.128965	0.4	No	Yes	W.G.Meri Nona	Dehigahabedda,Mitiyagoda	Improve the shoulders and road pavement	22.12.2016	Positive	Yes	No	20.03.2017	G3/49/25	No	No
LD/SP/G3/ID49/19	Manampita - Dehigaha Bedda Road	49	Yes	No	No	Gonapinu wala	Gonapinu wala	Mitiyagoda	0+964	0+975	LHS	6.191771	80.126901	0.3	No	Yes	W.P.C.Kanchana	Dehigahabedda,Mitiyagoda	Improve the shoulders and road pavement	22.12.2016	Positive	Yes	No	21.03.2017	G3/49/26	No	No
LD/SP/G3/ID49/20	Manampita - Dehigaha Bedda Road	49	Yes	No	No	Gonapinu wala	Gonapinu wala	Mitiyagoda	1+004	1+063	RHS	6.191594	80.126774	0.3	No	Yes	N.K.Kirithi Alwis	Dehigahabedda,Mitiyagoda	Improve the shoulders and road pavement	22.12.2016	Positive	Yes	No	21.03.2017	G3/49/27	No	No
LD/SP/G3/ID49/21	Manampita - Dehigaha Bedda Road	49	Yes	No	No	Gonapinu wala	Gonapinu wala	Mitiyagoda	1+090	1+115	LHS	6.190837	80.126492	0.5	No	Yes	L.Weerapperuma	Dehigahabedda,Mitiyagoda	Improve the shoulders and road pavement	22.12.2016	Positive	Yes	No	21.03.2017	G3/49/28	No	No
LD/SP/G3/ID49/22	Manampita - Dehigaha Bedda Road	49	Yes	No	No	Gonapinu wala	Gonapinu wala	Mitiyagoda	1+090	1+166	RHS	6.190820	80.126122	0.6	No	Yes	G.Dharmawardhana	Dehigahabedda,Mitiyagoda	Improve the shoulders and road pavement	22.12.2016	Positive	Yes	No	21.03.2017	G3/49/30 G3/49/31	No	No
LD/SP/G3/ID49/23	Manampita - Dehigaha Bedda Road	49	Yes	No	No	Gonapinu wala	Gonapinu wala	Mitiyagoda	1+166	1+228	RHS	6.190175	80.125900	0.7	No	Yes	W.Weerappurma	Dehigahabedda,Mitiyagoda	Improve the shoulders and road pavement	22.12.2016	Positive	Yes	No	21.03.2017	G3/49/32 G3/49/33	No	No
LD/SP/G3/ID49/24	Manampita - Dehigaha Bedda Road	49	Yes	No	No	Gonapinu wala	Gonapinu wala	Mitiyagoda	1+223	1+376	LHS	6.190112	80.125460	0.32	No	Yes	K.Dharmasiri	Dehigahabedda,Mitiyagoda	Improve the shoulders and road pavement	22.12.2016	Positive	Yes	No	21.03.2017	G3/49/34 G3/49/35 G3/49/36	No	No
LD/SP/G3/ID49/25	Manampita - Dehigaha Bedda Road	49	Yes	No	No	Gonapinu wala	Gonapinu wala	Mitiyagoda	1+590	1+651	LHS	6.188172	80.123228	0.3	No	Yes	W.K.Padmasiri	Ilukumulla,Mitiyagoda	Improve the shoulders and road pavement	22.12.2016	Positive	Yes	No	21.03.2017	G3/49/38	No	No
LD/SP/G3/ID49/26	Manampita - Dehigaha Bedda Road	49	Yes	No	No	Gonapinu wala	Gonapinu wala	Mitiyagoda	1+651	1+690	LHS	6.188131	80.12268	0.3	No	Yes	G.A.Lakshman	Ilukumulla,Mitiyagoda	Improve the shoulders and road pavement	22.12.2016	Positive	Yes	No	21.03.2017	G3/49/39	No	No
LD/SP/G3/ID49/27	Manampita - Dehigaha Bedda Road	49	Yes	No	No	Gonapinu wala	Gonapinu wala	Mitiyagoda	1+830	1+848	RHS	6.187582	80.121435	0.34	No	Yes	W.G.Somasiri	116/D/1,Ilukumulla,Mitiyagoda	Improve the shoulders and road pavement	22.12.2016	Positive	Yes	No	30.03.2017	G3/49/40	No	No
LD/SP/G3/ID49/28	Manampita - Dehigaha Bedda Road	49	Yes	No	No	Gonapinu wala	Gonapinu wala	Mitiyagoda	1+990	1+025	RHS	6.187516	80.121107	0.32	No	Yes	K.L.Vijesena	Ilukumulla,Mitiyagoda	Improve the shoulders and road pavement	22.12.2016	Positive	Yes	No	29.04.2017	G3/49/41	No	No
LD/SP/G3/ID49/29	Manampita - Dehigaha Bedda Road	49	Yes	No	No	Gonapinu wala	Gonapinu wala	Mitiyagoda	2+283	2+310	RHS	6.187228	80.117579	0.3	No	Yes	W.K.Padmasiri	Sri Amarawansa Mawatha,Kiridi Ela,Mitiyagoda	Improve the shoulders and road pavement	22.12.2016	Positive	Yes	No	27.03.2017	G3/49/42	No	No
LD/SP/G3/ID49/30	Manampita - Dehigaha Bedda Road	49	Yes	No	No	Gonapinu wala	Gonapinu wala	Mitiyagoda	2+320	2+250	LHS	6.187074	80.11742	0.4	No	Yes	T.R.Karunathilaka	Kiridi Ela,Mitiyagoda	Improve the shoulders and road pavement	22.12.2016	Positive	Yes	No	27.03.2017	G3/49/43	No	No
LD/SP/G3/ID49/31	Manampita - Dehigaha Bedda Road	49	Yes	No	No	Gonapinu wala	Gonapinu wala	Mitiyagoda	2+318	2+336	RHS	6.187387	80.117522	0.6	No	Yes	E.G.Upul Hemantha	Kiridi Ela,Mitiyagoda	Improve the shoulders and road pavement	22.12.2016	Positive	Yes	No	27.03.2017	G3/49/44	No	No
LD/SP/G3/ID49/32	Manampita - Dehigaha Bedda Road	49	Yes	No	No	Gonapinu wala	Gonapinu wala	Mitiyagoda	2+330	2+355	LHS	6.187092	80.117262	0.31	No	Yes	G.H.Preetika Malkanthi	Kiridi Ela,Mitiyagoda	Improve the shoulders and road pavement	22.12.2016	Positive	Yes	No	27.03.2017	G3/49/45	No	No
LD/SP/G3/ID49/33	Manampita - Dehigaha Bedda Road	49	Yes	No	No	Gonapinu wala	Gonapinu wala	Mitiyagoda	2+355	2+420	RHS	6.186995	80.117231	0.3	No	Yes	H.L.Kusumsiri	Dawalagiri,Kiridi Ela,Mitiyagoda	Improve the shoulders and road pavement	22.12.2016	Positive	Yes	No	27.03.2017	G3/49/46	No	No
LD/SP/G3/ID49/34	Manampita - Dehigaha Bedda Road	49	Yes	No	No	Gonapinu wala	Gonapinu wala	Mitiyagoda	2+336	2+355	RHS	6.187092	80.117262	0.3	No	Yes	W.K.Sirisena	Netawiyagaha Udumulla, Diddeliya,Mitiyagoda	Improve the shoulders and road pavement	22.12.2016	Positive	Yes	No	27.03.2017	G3/49/47	No	No
LD/SP/G3/ID49/35	Manampita - Dehigaha Bedda Road	49	Yes	No	No	Gonapinu wala	Gonapinu wala	Mitiyagoda	2+370	2+405	LHS	6.186906	80.116811	0.6	No	Yes	Shriyaletha Weerakon	Kiridi Ela,Mitiyagoda	Improve the shoulders and road pavement								

Contract Package : G3																													
File Serial No.	Name of Road	Road Information (Section 1)							Location Details (Section 2)					Present Occupant's Details (Section 3)						Reason for additional land requirement (Section 4)	Progress of land donation (Section5)							Remarks (Section 6)	
		ID of Road	Road Category			Administrative details			Chainage		Side (LHS/ RHS)	GPS log		Average width of strip (m)	Ownership		Name	Address	Date of initial discussion		View of occupent	Type of agreement		Date Signing of agreement	Photo documentation	Special requests of occupent	Comment of PE/ SSO		
			PS	PRDA	RDA	Name of PS	Name of DSD	Name and No. of GND	From	To		Northing	Easting		Clear Title	Title NOT Clear						Consent letter	MOU						
LD/SP/G3/ID69/13	Hatharaman Junction-Pasman Junction	69	Yes	No	No	Balapitiya	Balapitiya	Kosgoda	0+607	0+628	RHS	6.20117	80.02147	0.32	No	Yes	Miuri Abesingha	Godagama,Kosgoda	Improve the shoulders and road pavement	12.02.2017	Positive	Yes	No	18.06.2017	G3/69/13	No	No		
LD/SP/G3/ID69/14	Hatharaman Junction-Pasman Junction	69	Yes	No	No	Balapitiya	Balapitiya	Kosgoda	0+630	0+675	LHS	6.2012	80.0215	0.38	No	Yes	Samantha Priyalal De Silva	Godagama,Kosgoda	Improve the shoulders and road pavement	12.02.2017	Positive	Yes	No	17.06.2017	G3/69/14	No	No		
LD/SP/G3/ID69/15	Hatharaman Junction-Pasman Junction	69	Yes	No	No	Balapitiya	Balapitiya	Kosgoda	0+628	0+700	RHS	6.20123	80.02159	0.3	No	Yes	S.P.Sanjeewa Priyankara	No 293, Godagama, Kosgoda	Improve the shoulders and road pavement	12.02.2017	Positive	Yes	No	17.06.2017	G3/69/15	No	No		
LD/SP/G3/ID69/16	Hatharaman Junction-Pasman Junction	69	Yes	No	No	Balapitiya	Balapitiya	Kosgoda	0+680	0+714	LHS	6.20136	80.02185	0.32	No	Yes	H.R.Priyantha De Silva	Godagama,Kosgoda	Improve the shoulders and road pavement	12.02.2017	Positive	Yes	No	17.06.2017	G3/69/16	No	No		
LD/SP/G3/ID69/17	Hatharaman Junction-Pasman Junction	69	Yes	No	No	Balapitiya	Balapitiya	Kosgoda	0+717	0+730	LHS	6.20152	80.02201	0.31	No	Yes	D.Buddhipala De Soysa	Hatharaman Handiya,Kosgoda	Improve the shoulders and road pavement	12.02.2017	Positive	Yes	No	17.06.2017	G3/69/17	No	No		
LD/SP/G3/ID69/18	Hatharaman Junction-Pasman Junction	69	Yes	No	No	Balapitiya	Balapitiya	Kosgoda	0+738	0+755	LHS	6.20157	80.02211	0.37	No	Yes	D.Chandana Jagath	Godagama,Kosgoda	Improve the shoulders and road pavement	12.02.2017	Positive	Yes	No	17.06.2017	G3/69/18	No	No		
LD/SP/G3/ID69/19	Hatharaman Junction-Pasman Junction	69	Yes	No	No	Balapitiya	Balapitiya	Kosgoda	0+748	0+733	RHS	6.20152	80.02204	0.32	No	Yes	W.Marwin	Godagama,Kosgoda	Improve the shoulders and road pavement	12.02.2017	Positive	Yes	No	17.06.2017	G3/69/19	No	No		
LD/SP/G3/ID69/20	Hatharaman Junction-Pasman Junction	69	Yes	No	No	Balapitiya	Balapitiya	Kosgoda	0+755	0+748	RHS	6.20153	80.02205	0.34	No	Yes	W.A. Niluka Sadamali	Godagama,Kosgoda	Improve the shoulders and road pavement	12.02.2017	Positive	Yes	No	17.06.2017	G3/69/20	No	No		
LD/SP/G3/ID69/21	Hatharaman Junction-Pasman Junction	69	Yes	No	No	Balapitiya	Balapitiya	Kosgoda	0+755	0+765	RHS	6.20156	80.02208	0.3	No	Yes	T.D.Padmasingi De Silva	No 313, Godagama, Kosgoda	Improve the shoulders and road pavement	12.02.2017	Positive	Yes	No	17.06.2017	G3/69/21	No	No		
LD/SP/G3/ID69/22	Hatharaman Junction-Pasman Junction	69	Yes	No	No	Balapitiya	Balapitiya	Kosgoda	0+794	0+818	RHS	6.20178	80.02224	0.31	No	Yes	S.Sarath Kumara	"Sanjaya",Godagama,Kosgoda	Improve the shoulders and road pavement	12.02.2017	Positive	Yes	No	17.06.2017	G3/69/22	No	No		
LD/SP/G3/ID69/23	Hatharaman Junction-Pasman Junction	69	Yes	No	No	Balapitiya	Balapitiya	Kosgoda	0+807	0+817	LHS	6.20184	80.02226	0.32	No	Yes	W.Samanthi Mendis	Godagama,Kosgoda	Improve the shoulders and road pavement	12.02.2017	Positive	Yes	No	04.06.2017	G3/69/23	No	No		
LD/SP/G3/ID69/24	Hatharaman Junction-Pasman Junction	69	Yes	No	No	Balapitiya	Balapitiya	Kosgoda	0+817	0+851	LHS	6.20194	80.02227	0.34	No	Yes	K.H.S.De Thabbru	Godagama,Kosgoda	Improve the shoulders and road pavement	12.02.2017	Positive	Yes	No	04.06.2017	G3/69/24	No	No		
LD/SP/G3/ID69/25	Hatharaman Junction-Pasman Junction	69	Yes	No	No	Balapitiya	Balapitiya	Kosgoda	0+819	0+870	RHS	6.20194	80.02227	0.6	No	Yes	W.Mran De Silva	Godagama,Kosgoda	Improve the shoulders and road pavement	12.02.2017	Positive	Yes	No	04.06.2017	G3/69/25	No	No		
LD/SP/G3/ID69/26	Hatharaman Junction-Pasman Junction	69	Yes	No	No	Balapitiya	Balapitiya	Kosgoda	0+870	0+889	LHS	6.2022	80.02226	0.32	No	Yes	Maresh Lakmal	Godagama,Kosgoda	Improve the shoulders and road pavement	12.02.2017	Positive	Yes	No	04.06.2017	G3/69/26	No	No		
LD/SP/G3/ID69/27	Hatharaman Junction-Pasman Junction	69	Yes	No	No	Balapitiya	Balapitiya	Kosgoda	0+870	0+893	RHS	6.2022	80.02226	0.3	No	Yes	Lalith Kumara De Soysa	Godagama,Kosgoda	Improve the shoulders and road pavement	12.02.2017	Positive	Yes	No	04.06.2017	G3/69/27	No	No		
LD/SP/G3/ID69/28	Hatharaman Junction-Pasman Junction	69	Yes	No	No	Balapitiya	Balapitiya	Kosgoda	0+892	0+921	LHS	6.2022	80.02225	0.45	No	Yes	Indra Jayanthi	Godagama,Kosgoda	Improve the shoulders and road pavement	12.02.2017	Positive	Yes	No	04.06.2017	G3/69/28	No	No		
LD/SP/G3/ID69/29	Hatharaman Junction-Pasman Junction	69	Yes	No	No	Balapitiya	Balapitiya	Kosgoda	0+921	0+953	LHS	6.20246	80.0224	0.67	No	Yes	Y.Kalyani	Godagama,Kosgoda	Improve the shoulders and road pavement	12.02.2017	Positive	Yes	No	04.06.2017	G3/69/29	No	No		
LD/SP/G3/ID69/30	Hatharaman Junction-Pasman Junction	69	Yes	No	No	Balapitiya	Balapitiya	Kosgoda	0+960	1+012	LHS	6.20267	80.02227	0.34	No	Yes	Kendraramaya	Godagama,Kosgoda	Improve the shoulders and road pavement	12.02.2017	Positive	Yes	No	04.06.2017	G3/69/30	No	No		
LD/SP/G3/ID69/31	Hatharaman Junction-Pasman Junction	69	Yes	No	No	Balapitiya	Balapitiya	Kosgoda	1+017	1+060	LHS	6.20276	80.02253	0.32	No	Yes	K.Kamalawathi Thabbru	Godagama,Kosgoda	Improve the shoulders and road pavement	12.02.2017	Positive	Yes	No	04.06.2017	G3/69/31	No	No		
LD/SP/G3/ID69/32	Hatharaman Junction-Pasman Junction	69	Yes	No	No	Balapitiya	Balapitiya	Kosgoda	1+062	1+114	RHS	6.20281	80.02281	0.3	No	Yes	T.I.D.Wikramaratne	Godagama,Kosgoda	Improve the shoulders and road pavement	12.02.2017	Positive	Yes	No	04.06.2017	G3/69/32	No	No		
LD/SP/G3/ID69/33	Hatharaman Junction-Pasman Junction	69	Yes	No	No	Balapitiya	Balapitiya	Kosgoda	1+110	1+120	RHS	6.20283	80.02303	0.31	No	Yes	K.C.Silva	312/A.1,Godagama,Kosgoda	Improve the shoulders and road pavement	12.02.2017	Positive	Yes	No	28.04.2017	G3/69/33	No	No		
LD/SP/G3/ID69/34	Hatharaman Junction-Pasman Junction	69	Yes	No	No	Balapitiya	Balapitiya	Kosgoda	1+171	1+245	LHS	6.20311	80.02311	0.67	No	Yes	M.Thilini Wijesekara	Godagama,Kosgoda	Improve the shoulders and road pavement	12.02.2017	Positive	Yes	No	28.04.2017	G3/69/34	No	No		
LD/SP/G3/ID69/35	Hatharaman Junction-Pasman Junction	69	Yes	No	No	Balapitiya	Balapitiya	Kosgoda	1+245	1+404	LHS	6.20354	80.02314	0.3	No	Yes	J.M.Soysa	Wijaya Rakshitha	Improve the shoulders and road pavement	12.02.2017	Positive	Yes	No	04.06.2017	G3/69/35	No	No		
LD/SP/G3/ID69/36	Hatharaman Junction-Pasman Junction	69	Yes	No	No	Balapitiya	Balapitiya	Kosgoda	1+533	1+450	RHS	6.20519	80.02329	0.32	No	Yes	W.Miran De Silva	Godagama Para,Pasman Handiya,Kosgoda	Improve the shoulders and road pavement	12.02.2017	Positive	Yes	No	04.06.2017	G3/69/36	No	No		
LD/SP/G3/ID69/37	Hatharaman Junction-Pasman Junction	69	Yes	No	No	Balapitiya	Balapitiya	Kosgoda	1+450	1+600	LHS	6.20521	80.02332	0.34	No	Yes	D.Y.P.Wijesekara	Godagama Para,Pasman Handiya,Kosgoda	Improve the shoulders and road pavement	12.02.2017	Positive	Yes	No	04.06.2017	G3/69/37	No	No		
LD/SP/G3/ID57/01	Dewagoda-Balabokka Road	57	Yes	No	No	Hikkaduwa	Hikkaduwa	Dewagoda	0+000	0+025	LHS	6.21886	80.062186	0.33	No	Yes	M.Lalith Prasanna	198/1,Suduweligoda Para,Dewagoda,Madampe,Ambalangoda	Improve the shoulders and road pavement	02.09.2016	Positive	Yes	No	09.02.2017	G3/57/01	No	No		
LD/SP/G3/ID57/02	Dewagoda-Balabokka Road	57	Yes	No	No	Hikkaduwa	Hikkaduwa	Dewagoda	0+025	0+039	LHS	6.218966	80.062171	0.3	No	Yes	S.H.Bandusiri	197/A2,Suduwelikada Para,Dewagoda	Improve the shoulders and road pavement	02.09.2016	Positive	Yes	No	09.02.2017	G3/57/02	No	No		
LD/SP/G3/ID57/																													

File Serial No.	Name of Road	Road Information (Section 1)						Location Details (Section 2)						Present Occupant's Details (Section 3)				Reason for additional land requirement (Section 4)	Date of initial discussion	Progress of land donation (Section5)				Remarks (Section 6)			
		Road Category			Administrative details			Chainage		Side (LHS/ RHS)	GPS log		Average width of strip (m)	Ownership		Name	Address			View of occupent	Type of agreement Consent letter	MOU	Date Signing of agreement	Photo document ation	Special requests of occupent	Comment of PE/ SSO	
		ID of Road	PS	PRDA	RDA	Name of PS	Name of DSD	Name and No. of GND	From		To	Northing		Easting	Clear Title												Title NOT Clear
LD/SP/G3/ID52/08	Ampegama School - Unapadura	52	Yes	No	No	Gonapinu wala	Gonapinu wala	Ampegama	0+460	0+500	RHS	6.193799	80.139851	0.31	No	Yes	D.M.Weerakkodi	Uramalahena,Ampegama	Improve the shoulders and road pavement	14.07.2016	Positive	Yes	No	22.02.2017	G3/52/10	No	No
LD/SP/G3/ID52/09	Ampegama School - Unapadura	52	Yes	No	No	Gonapinu wala	Gonapinu wala	Ampegama	0+500	0+530	LHS	6.193872	80.139423	0.32	No	Yes	S.L.Shanaka	Uramalahena,Ampegama	Improve the shoulders and road pavement	14.07.2016	Positive	Yes	No	22.02.2017	G3/52/11 G3/52/12	No	No
LD/SP/G3/ID52/10	Ampegama School - Unapadura	52	Yes	No	No	Gonapinu wala	Gonapinu wala	Ampegama	0+530	0+552	LHS	6.194175	80.139127	0.3	No	Yes	K.N.G.Nalani	Uramalahena,Ampegama	Improve the shoulders and road pavement	14.07.2016	Positive	Yes	No	26.01.2017	G3/52/13	No	No
LD/SP/G3/ID52/11	Ampegama School - Unapadura	52	Yes	No	No	Gonapinu wala	Gonapinu wala	Ampegama	0+553	0+625	RHS	6.194171	80.138768	0.31	No	Yes	W.G.Thushari	Uramalahena,Ampegama	Improve the shoulders and road pavement	14.07.2016	Positive	Yes	No	17.02.2017	G3/52/14	No	No
LD/SP/G3/ID52/12	Ampegama School - Unapadura	52	Yes	No	No	Gonapinu wala	Gonapinu wala	Ampegama	0+561	0+575	LHS	6.194418	80.138668	0.3	No	Yes	P.K.Karunasena	Unapadura Handiya, Bamwelgodella,Aluthwala	Improve the shoulders and road pavement	14.07.2016	Positive	Yes	No	17.02.2017	G3/52/15	No	No
LD/SP/G3/ID52/13	Ampegama School - Unapadura	52	Yes	No	No	Gonapinu wala	Gonapinu wala	Ampegama	0+600	0+623	LHS	6.194407	80.138556	0.3	No	Yes	K.G.Ashoka	Unapadura Handiya, Bamwelgodella	Improve the shoulders and road pavement	14.07.2016	Positive	Yes	No	26.01.2017	G3/52/16	No	No
LD/SP/G3/ID52/14	Ampegama School - Unapadura	52	Yes	No	No	Gonapinu wala	Gonapinu wala	Ampegama	0+675	0+720	RHS	6.19497	80.138266	0.31	No	Yes	K.A.Weerathunga	88B,Uramalahena,Ampegama	Improve the shoulders and road pavement	14.07.2016	Positive	Yes	No	26.01.2017	G3/52/17	No	No
LD/SP/G3/ID52/15	Ampegama School - Unapadura	52	Yes	No	No	Gonapinu wala	Gonapinu wala	Ampegama	0+724	0+786	RHS	6.195695	80.137876	0.3	No	Yes	G.G.Mahinda	Uramalahena,Ampegama	Improve the shoulders and road pavement	14.07.2016	Positive	Yes	No	17.02.2017	G3/52/18	No	No
LD/SP/G3/ID52/16	Ampegama School - Unapadura	52	Yes	No	No	Gonapinu wala	Gonapinu wala	Ampegama	0+745	0+510	LHS	6.195761	80.137761	0.34	No	Yes	H.L.Thilakarathne	"Preethi",Uramalahena,Ampegama	Improve the shoulders and road pavement	14.07.2016	Positive	Yes	No	31.01.2017	G3/52/19	No	No
LD/SP/G3/ID52/17	Ampegama School - Unapadura	52	Yes	No	No	Gonapinu wala	Gonapinu wala	Ampegama	0+785	0+820	RHS	6.195718	80.137819	0.3	No	Yes	A.G.Ujith Asanka	No76/A,Uramalahena,Ampegama	Improve the shoulders and road pavement	14.07.2016	Positive	Yes	No	18.02.2017	G3/52/20	No	No
LD/SP/G3/ID52/18	Ampegama School - Unapadura	52	Yes	No	No	Gonapinu wala	Gonapinu wala	Ampegama	0+820	0+863	RHS	6.195718	80.137819	0.32	No	Yes	K.A.G.Ranjith	Uramalahena,Ampegama	Improve the shoulders and road pavement	14.07.2016	Positive	Yes	No	17.02.2017	G3/52/21	No	No
LD/SP/G3/ID52/19	Ampegama School - Unapadura	52	Yes	No	No	Gonapinu wala	Gonapinu wala	Ampegama	0+863	0+910	RHS	6.19656	80.137851	0.31	No	Yes	Shanthi Kariyawasam	Uramalahena,Ampegama	Improve the shoulders and road pavement	14.07.2016	Positive	Yes	No	17.02.2017	G3/52/22	No	No
LD/SP/G3/ID52/20	Ampegama School - Unapadura	52	Yes	No	No	Gonapinu wala	Gonapinu wala	Ampegama	0+913	0+950	RHS	6.19663	80.137852	0.33	No	Yes	B.T.Chaminda	74B,Uramalahena,Ampegama	Improve the shoulders and road pavement	14.07.2016	Positive	Yes	No	17.02.2017	G3/52/23	No	No
LD/SP/G3/ID52/21	Ampegama School - Unapadura	52	Yes	No	No	Gonapinu wala	Gonapinu wala	Ampegama	0+915	0+986	LHS	6.197153	80.138553	0.3	No	Yes	R.S.Amarasingha	Thumbukkuwa,Uramalahena,Ampegama	Improve the shoulders and road pavement	14.07.2016	Positive	Yes	No	31.01.2017	G3/52/24 G3/52/25	No	No
LD/SP/G3/ID52/22	Ampegama School - Unapadura	52	Yes	No	No	Gonapinu wala	Gonapinu wala	Ampegama	0+975	1+026	RHS	6.196983	80.138417	0.35	No	Yes	W.A.Malani	Uramalahena,Ampegama	Improve the shoulders and road pavement	14.07.2016	Positive	Yes	No	17.02.2017	G3/52/26	No	No
LD/SP/G3/ID52/23	Ampegama School - Unapadura	52	Yes	No	No	Gonapinu wala	Gonapinu wala	Ampegama	1+007	1+030	LHS	6.19787	80.138814	0.31	No	Yes	P.T.Lalitha	Uramalahena,Ampegama	Improve the shoulders and road pavement	14.07.2016	Positive	Yes	No	30.01.2017	G3/52/27	No	No
LD/SP/G3/ID52/24	Ampegama School - Unapadura	52	Yes	No	No	Gonapinu wala	Gonapinu wala	Ampegama	1+026	1+083	RHS	6.197837	80.138811	0.3	No	Yes	T.K.Ramani Mangalika	72,Uramalahena,Ampegama	Improve the shoulders and road pavement	14.07.2016	Positive	Yes	No	17.02.2017	G3/52/28	No	No
LD/SP/G3/ID52/25	Ampegama School - Unapadura	52	Yes	No	No	Gonapinu wala	Gonapinu wala	Ampegama	1+030	1+090	LHS	6.197871	80.138824	0.34	No	Yes	E.K.G.Chandani	Maduwatta,Uramalahena,Ampegama	Improve the shoulders and road pavement	14.07.2016	Positive	Yes	No	30.01.2017	G3/52/29	No	No
LD/SP/G3/ID52/26	Ampegama School - Unapadura	52	Yes	No	No	Gonapinu wala	Gonapinu wala	Ampegama	1+086	1+118	RHS	6.197856	80.139061	0.32	No	Yes	D.M.Nimali	Uramalahena,Ampegama	Improve the shoulders and road pavement	14.07.2016	Positive	Yes	No	17.02.2017	G3/52/30	No	No
LD/SP/G3/ID52/27	Ampegama School - Unapadura	52	Yes	No	No	Gonapinu wala	Gonapinu wala	Ampegama	1+115	1+137	LHS	6.197869	80.139077	34	No	Yes	S.K.Piyadasa	Uramalahena,Ampegama Uthura	Improve the shoulders and road pavement	14.07.2016	Positive	Yes	No	18.02.2017	G3/52/31	No	No
LD/SP/G3/ID52/28	Ampegama School - Unapadura	52	Yes	No	No	Gonapinu wala	Gonapinu wala	Ampegama	1+170	1+201	RHS	6.197978	80.139467	0.34	No	Yes	Sudesh Jayasekara	Uramalahena,Ampegamuwa	Improve the shoulders and road pavement	14.07.2016	Positive	Yes	No	03.02.2017	G3/52/32 G3/52/33	No	No
LD/SP/G3/ID52/29	Ampegama School - Unapadura	52	Yes	No	No	Gonapinu wala	Gonapinu wala	Ampegama	1+202	1+222	RHS	6.198257	80.140209	0.3	No	Yes	B.W.Somasiri	Uramalahena,Ampegamuwa	Improve the shoulders and road pavement	14.07.2016	Positive	Yes	No	17.02.2017	G3/52/34	No	No
LD/SP/G3/ID52/30	Ampegama School - Unapadura	52	Yes	No	No	Gonapinu wala	Gonapinu wala	Ampegama	1+258	1+293	LHS	6.198744	80.140555	0.31	No	Yes	U.A.P.Ananda	Uramalahena,Ampegama	Improve the shoulders and road pavement	14.07.2016	Positive	Yes	No	03.02.2017	G3/52/35 G3/52/36	No	No
LD/SP/G3/ID57/01	Buddhajayanthi Mawatha	57	Yes	No	No	Hikkaduwa	Hikkaduwa	Delgahaduwa	0+010	0+025	LHS	6.127128	80.128045	0.3	No	Yes	Samana Samaraweera	Thiranagama Nagenahira,Hikkaduwa	Improve the shoulders and road pavement	07.06.2016	Positive	Yes	No	08.02.2017	G3/57/01	No	No
LD/SP/G3/ID57/02	Buddhajayanthi Mawatha	57	Yes	No	No	Hikkaduwa	Hikkaduwa	Delgahaduwa	0+025	0+082	LHS	6.127214	80.127788	0.3	No	Yes	K.R.Siriri Ranaweera	Delgahaduwa Para,Delgahaduwa,Dodanduwa	Improve the shoulders and road pavement	07.06.2016	Positive	Yes	No	26.09.2016	G3/57/02	No	No
LD/SP/G3/ID57/03	Buddhajayanthi Mawatha	57	Yes	No	No	Hikkaduwa	Hikkaduwa	Delgahaduwa	0+060	0+072	RHS	6.127344	80.128387	0.31	No	Yes	G.Chandrarathne	Delgahaduwa Para,Katukuliya,Dodanduwa	Improve the shoulders and road pavement	07.06.2016	Positive	Yes	No	08.02.2017	G3/57/03	No	No
LD/SP/G3/ID57/04	Buddhajayanthi Mawatha	57	Yes	No	No	Hikkaduwa	Hikkaduwa	Delgahaduwa	0+082	0+086	LHS	6.127186	80.128076	0.32	No	Yes	J.K.K.Jayasingha	Delgahaduwa,Dodanduwa	Improve the shoulders and road pavement	07.06.2016	Positive	Yes><					

File Serial No.	Road Information (Section 1)								Location Details (Section 2)					Present Occupant's Details (Section 3)				Reason for additional land requirement (Section 4)	Progress of land donation (Section5)						Remarks (Section 6)		
	Name of Road	ID of Road	Road Category			Administrative details			Chainage		Side (LHS/ RHS)	GPS log		Average width of strip (m)	Ownership		Name		Address	Date of initial discussion	View of occupent	Type of agreement		Date Signing of agreement	Photo document ation	Special requests of occupent	Comment of PE/ SSO
			PS	PRDA	RDA	Name of PS	Name of DSD	Name and No. of GND	From	To		Northing	Easting		Clear Title	Title NOT Clear						Consent letter	MOU				
LD/SP/G3/ID54/28	to 05th mile post	54	Yes	No	No	Ambalang oda	Ambalang oda	Nindana	1+000	1+010	LHS	6.208841	80.113928	0.35	No	Yes	Dhanasena Salpage	Wathurawila,Nindana	Improve the shoulders and road pavement	12.05.2016	Positive	Yes	No	16.09.2016	G3/54/28	No	No
LD/SP/G3/ID54/29	Nindana school to 05th mile post	54	Yes	No	No	Ambalang oda	Ambalang oda	Nindana	1+010	1+080	LHS	6.208841	80.113928	0.35	No	Yes	Dhanasena Salpage	Wathurawila,Nindana	Improve the shoulders and road pavement	12.05.2016	Positive	Yes	No	16.09.2016	G3/54/29	No	No
LD/SP/G3/ID54/30	Nindana school to 05th mile post	54	Yes	No	No	Ambalang oda	Ambalang oda	Nindana	1+010	1+080	RHS	6.208841	80.113928	0.35	No	Yes	A.W.Roslin	Wathurawila,Nindana	Improve the shoulders and road pavement	12.05.2016	Positive	Yes	No	16.09.2016	G3/54/30	No	No
LD/SP/G3/ID54/31	Nindana school to 05th mile post	54	Yes	No	No	Ambalang oda	Ambalang oda	Nindana	1+090	1+200	RHS	6.208734	80.114551	0.36	No	Yes	L.L.Thissa Priyantha Kumara	Wathurawila Para,Nindana Maha Vidhyalaya Asala,Nindana	Improve the shoulders and road pavement	12.05.2016	Positive	Yes	No	16.09.2016	G3/54/31	No	No
LD/SP/G3/ID54/32	Nindana school to 05th mile post	54	Yes	No	No	Ambalang oda	Ambalang oda	Nindana	1+090	1+200	LHS	6.208734	80.114551	0.3	No	Yes	L.H.L.Rathnasena	Wathurawila,Nindana	Improve the shoulders and road pavement	12.05.2016	Positive	Yes	No	19.06.2016	G3/54/32	No	No
LD/SP/G3/ID54/33	Nindana school to 05th mile post	54	Yes	No	No	Ambalang oda	Ambalang oda	Nindana	1+200	1+300	LHS	6.208312	80.11619	0.35	No	Yes	A.K.Samsan	Wathurawila,Nindana	Improve the shoulders and road pavement	12.05.2016	Positive	Yes	No	16.09.2016	G3/54/33	No	No
LD/SP/G3/ID54/34	Nindana school to 05th mile post	54	Yes	No	No	Ambalang oda	Ambalang oda	Nindana	1+200	1+300	RHS	6.208312	80.11619	0.3	No	Yes	H.N.Wimalasena	Nawagama,Mitiyagoda	Improve the shoulders and road pavement	12.05.2016	Positive	Yes	No	19.06.2016	G3/54/34	No	No
LD/SP/G3/ID54/35	Nindana school to 05th mile post	54	Yes	No	No	Ambalang oda	Ambalang oda	Nindana	1+300	1+350	LHS	6.208346	80.116315	0.34	No	Yes	Salpage Bandula Kumarasiri	Nawagama,Mitiyagoda	Improve the shoulders and road pavement	12.05.2016	Positive	Yes	No	19.06.2016	G3/54/35	No	No
LD/SP/G3/ID54/36	Nindana school to 05th mile post	54	Yes	No	No	Ambalang oda	Ambalang oda	Nindana	1+300	1+390	RHS	6.208346	80.116315	0.31	No	Yes	M.H.Chamith Jayalal	294,Wathurawila,Nindana	Improve the shoulders and road pavement	12.05.2016	Positive	Yes	No	19.06.2016	G3/54/36	No	No
LD/SP/G3/ID54/37	Nindana school to 05th mile post	54	Yes	No	No	Ambalang oda	Ambalang oda	Nindana	1+390	1+390	RHS	6.207591	80.116369	0.34	No	Yes	M.H.Ariyasena	Wathurawila,Nindana	Improve the shoulders and road pavement	12.05.2016	Positive	Yes	No	20.09.2016	G3/54/37	No	No
LD/SP/G3/ID54/38	Nindana school to 05th mile post	54	Yes	No	No	Ambalang oda	Ambalang oda	Nindana	1+390	1+390	LHS	6.207591	80.116369	0.34	No	Yes	Wathudura Jinarathne	Anka 310A,Wathurawila,Nindana	Improve the shoulders and road pavement	12.05.2016	Positive	Yes	No	20.09.2016	G3/54/38	No	No
LD/SP/G3/ID54/39	Nindana school to 05th mile post	54	Yes	No	No	Ambalang oda	Ambalang oda	Nindana	1+430	1+460	LHS	6.207238	80.11622	0.3	No	Yes	M.G.Lilan Thusharika	No384/2,"Weeragiri",Wathurawila,Nindana	Improve the shoulders and road pavement	12.05.2016	Positive	Yes	No	20.09.2016	G3/54/39	No	No
LD/SP/G3/ID54/40	Nindana school to 05th mile post	54	Yes	No	No	Ambalang oda	Ambalang oda	Nindana	1+470	1+520	LHS	6.207063	80.10974	0.32	No	Yes	S.D.De Silva	23/8,Widyalaya Mawatha,Ambalangoda	Improve the shoulders and road pavement	12.05.2016	Positive	Yes	No	19.06.2016	G3/54/40	No	No
LD/SP/G3/ID54/41	Nindana school to 05th mile post	54	Yes	No	No	Ambalang oda	Ambalang oda	Nindana	1+470	1+510	RHS	6.206375	80.11611	0.3	No	Yes	Ariyathilaka	Wathurawila,Nindana	Improve the shoulders and road pavement	12.05.2016	Positive	Yes	No	19.06.2016	G3/54/41	No	No
LD/SP/G3/ID54/42	Nindana school to 05th mile post	54	Yes	No	No	Ambalang oda	Ambalang oda	Nindana	1+520	1+580	LHS	6.206178	80.116308	0.34	No	Yes	D.M.G.Dayananda	Wathurawila,Nindana	Improve the shoulders and road pavement	12.05.2016	Positive	Yes	No	19.06.2016	G3/54/42	No	No
LD/SP/G3/ID54/43	Nindana school to 05th mile post	54	Yes	No	No	Ambalang oda	Ambalang oda	Nindana	1+520	1+580	RHS	6.206178	80.116308	0.31	No	Yes	A.G.Devid Silva	Nawagama,Mitiyagoda	Improve the shoulders and road pavement	12.05.2016	Positive	Yes	No	19.06.2016	G3/54/43	No	No
LD/SP/G3/ID54/44	Nindana school to 05th mile post	54	Yes	No	No	Ambalang oda	Ambalang oda	Nindana	1+610	1+650	RHS	6.206036	80.116412	0.39	No	Yes	U.A.Chandasiri	Nawagama,Mitiyagoda	Improve the shoulders and road pavement	12.05.2016	Positive	Yes	No	19.06.2016	G3/54/44	No	No
LD/SP/G3/ID54/45	Nindana school to 05th mile post	54	Yes	No	No	Ambalang oda	Ambalang oda	Nindana	1+610	1+650	LHS	6.206036	80.116412	0.3	No	Yes	W.T.Chandrawathi	Nawagama,Mitiyagoda	Improve the shoulders and road pavement	12.05.2016	Positive	Yes	No	19.06.2016	G3/54/45	No	No
LD/SP/G3/ID54/46	Nindana school to 05th mile post	54	Yes	No	No	Ambalang oda	Ambalang oda	Nindana	1+670	1+710	RHS	6.205354	80.116702	0.31	No	Yes	M.G.Soyasa	Nawagama,Mitiyagoda	Improve the shoulders and road pavement	12.05.2016	Positive	Yes	No	19.06.2016	G3/54/46	No	No
LD/SP/G3/ID54/47	Nindana school to 05th mile post	54	Yes	No	No	Ambalang oda	Ambalang oda	Nindana	1+670	1+710	LHS	6.205354	80.116702	0.31	No	Yes	U.A.Kumudini	Nawagama,Mitiyagoda	Improve the shoulders and road pavement	12.05.2016	Positive	Yes	No	19.06.2016	G3/54/47	No	No
LD/SP/G3/ID54/48	Nindana school to 05th mile post	54	Yes	No	No	Ambalang oda	Ambalang oda	Nindana	1+710	1+730	RHS	6.205242	80.117072	0.32	No	Yes	T.Ranjith	Nawagama,Mitiyagoda	Improve the shoulders and road pavement	12.05.2016	Positive	Yes	No	19.06.2016	G3/54/48	No	No
LD/SP/G3/ID54/49	Nindana school to 05th mile post	54	Yes	No	No	Ambalang oda	Ambalang oda	Nindana	1+770	1+840	RHS	6.205202	80.117755	0.3	No	Yes	A.H.Ranjani	No866/A,Wathurawila,Nindana	Improve the shoulders and road pavement	12.05.2016	Positive	Yes	No	19.06.2016	G3/54/49	No	No
LD/SP/G3/ID54/50	Nindana school to 05th mile post	54	Yes	No	No	Ambalang oda	Ambalang oda	Nindana	1+770	1+830	LHS	6.205202	80.117755	0.3	No	Yes	P.Mallika	Wathurawila,Nindana	Improve the shoulders and road pavement	12.05.2016	Positive	Yes	No	19.06.2016	G3/54/50	No	No
LD/SP/G3/ID54/51	Nindana school to 05th mile post	54	Yes	No	No	Ambalang oda	Ambalang oda	Nindana	1+830	1+850	RHS	6.204645	80.118341	0.35	No	Yes	P.G.W.Herin	Wathurawila,Nindana	Improve the shoulders and road pavement	12.05.2016	Positive	Yes	No	19.06.2016	G3/54/51	No	No
LD/SP/G3/ID54/52	Nindana school to 05th mile post	54	Yes	No	No	Ambalang oda	Ambalang oda	Nindana	1+860	1+900	RHS	6.204699	80.11822	0.3	No	Yes	S.H.Lakshman	Wathurawila,Nindana	Improve the shoulders and road pavement	12.05.2016	Positive	Yes	No	19.06.2016	G3/54/52	No	No
LD/SP/G3/ID54/53	Nindana school to 05th mile post	54	Yes	No	No	Ambalang oda	Ambalang oda	Nindana	1+860	1+900	LHS	6.204699	80.11822	0.32	No	Yes	M.H.Karunaratne	Wathurawila,Nindana	Improve the shoulders and road pavement	12.05.2016	Positive	Yes	No	19.06.2016	G3/54/53	No	No
LD/SP/G3/ID54/54	Nindana school to 05th mile post	54	Yes	No	No	Ambalang oda	Ambalang oda	Nindana	1+900	1+930	RHS	6.204081	80.118763	0.35	No	Yes	M.H.Surasena	Wathurawila,Nindana	Improve the shoulders and road pavement	12.05.2016	Positive	Yes	No	19.06.2016	G3/54/54	No	No
LD/SP/G3/ID54/55	Nindana school to 05th mile post	54	Yes	No	No	Ambalang oda	Ambalang oda	Nindana	1+930	2+050	RHS	6.204008	80.118769	0.32	No	Yes	W.Abhaya Pushpakumara	Wathurawila,Nindana	Improve the shoulders and road pavement	12.05.2016	Positive	Yes	No	19.06.2016	G3/54/55	No	No
LD/SP/G3/ID54/56	Nindana school to 05th mile post	54	Yes	No	No	Ambalang oda	Ambalang oda	Nindana	1+930	2+050	LHS	6.204008	80.118769	0.31	No	Yes	M.G.Piyadasa	No384,"weeragiri",Wathurawila,Nindana	Improve the shoulders and road pavement	12.05.2016	Positive	Yes	No	19.06.2016	G3/54/56	No	No
LD/SP/G3/ID54/57	Nindana school to 05th mile post	54	Yes	No	No	Ambalang oda	Ambalang oda	Nindana	2+050	2+060	RHS	6.203057	80.11963	0.3	No	Yes	U.A.Priyantha Thilaka	434/1,Weerawila,Nindana	Improve the shoulders and road pavement	12.05.2016	Positive	Yes	No	19.06.2016	G3/54/57	No	No
LD/SP/G3/ID54/58	Nindana school to 05th mile post	54	Yes	No	No	Ambalang oda	Ambalang oda	Nindana	2+100	2+150	RHS	6.20253	80.120048	0.34	No	Yes	D.Nimesh Tharidu Yasaratne	Wathurawila,Nindana	Improve the shoulders and road pavement	12.05.2016	Positive	Yes	No	19.06.2016	G3/54/58	No	No
LD/SP/G3/ID54/59	Nindana school to 05th mile post	54	Yes	No	No	Ambalang oda	Ambalang oda	Nindana	2+320	2+350	LHS	6.201772	80.121476	0.3	No	Yes	K.W.Amaralatha	No.172,Wathurawila,Nindana	Improve the shoulders and road pavement	12.05.2016	Positive	Yes	No	19.06.2016	G3/54/59	No	No
LD/SP/G3/ID54/60	Nindana school to 05th mile post	54	Yes	No	No	Ambalang oda	Ambalang oda	Nindana	2+390	2+420	RHS	6.201315	80.121785	0.35	No	Yes	K.H.Kusumawathi	No865,Wathurawila,Nindana	Improve the shoulders and road pavement	12.05.2016	Positive	Yes	No	19.06.2016	G3/54/60	No	No
LD/SP/G3/ID54/61	Nindana school to 05th mile post	54	Yes	No	No	Ambalang oda	Ambalang oda	Nindana	2+500	2+530	LHS	6.200451	80.121692	0.3	No	Yes	W.Gamini Gunaratne	Wathurawila,Nindana	Improve the shoulders and road pavement	12.05.2016	Positive	Yes	No	19.06.2016	G3/54/61	No	No
LD/SP/G3/ID54/62	Nindana school to 05th mile post	54	Yes	No	No	Ambalang oda	Ambalang oda	Nindana	2+550	2+600	RHS	6.200163	80.12193	0.3	No	Yes	W.Thilakasiri	Wathurawila,Nindana	Improve the shoulders and road pavement	12.05.2016	Positive	Yes	No	19.06.2016	G3/54/62	No	No

Status of Land Donation

Table: 5.2 Confirmation of land donation –Consent letters (1 January to 30 June, 2018)

District	Contract Package	S / N	Road Name	Road ID	Chainage	Side of the road	Ownership of land (Government / Private)	Reason for additional land requirement	Name & Address of the land owner
Galle	G1	Nil							
	G2	Nil							
	G3	Nil							
Matara	M1	Nil							
	M2	01	Wilpita - Ukgashena via Abimansala	50A	2+078 - 2+350	RHS	Private	For road improvement	S.G. Nandadasa, Watadeniya watta, Ransagoda – south, Ransagoda.
		02			2+226 – 2+275	LHS	Private	For road improvement	V.G. Nadeeka Ruwan, Wedage watta, Kuruduwatta, Wilpita, Akurassa.
		03			2+275 – 2+255	LHS	Private	For road improvement	W.K. Ariyasena, Uggashena, Wilpita, Akurassa.
		04			2+355 – 2+495	LHS	Private	For road improvement	Lalitha Kanthi, Maduna hena, Ransagoda – south, Ransagoda.
		05			2+450 – 2+540	LHS	Private	For road improvement	K.K. Somalatha, Kamburupitiyahena, Ransagoda – south, Ransagoda.
		06			2+495 – 2+520	LHS	Private	For road improvement	M. Gunathilaka, Mudunahena, Ransagoda – south, Ransagoda.
		07			2+530 – 2+555	LHS	Private	For road improvement	K.A. Somadasa, Bulathgedara, Ransagoda – south, Ransagoda.

Matara		08			2+255 – 2+583	LHS	Private	For road improvement	R. Mayantha, Deshan, Ransagoda – south, Ransagoda.	
		09			2+583 – 2+ 620	LHS	Private	For road improvement	S.G. Piyadasa, Ilukwaththa hena, Ransagoda – south, Ransagoda.	
		10			2+613 – 2+800	RHS	Private	For road improvement	W. Premawathi, Mahagedara hena, Ransagoda – south, Ransagoda.	
		11			2+620 – 2+583	LHS	Private	For road improvement	N.G. Nandasena, Amaraniwasa, Ransagoda – south, Ransagoda.	
		12			2+689 – 2+245	LHS	Private	For road improvement	S.G. Nandasena, Ilukwatta hena, Ransagoda – south, Ransagoda.	
		13			2+800 – 2+820	RHS	Private	For road improvement	L.H. Binona, Kamburupitiyahena, Ransagoda – south, Ransagoda.	
		14	Obadakanda Badabadda Road	57	0+990 – 1+108	RHS	Government	For road improvement	Godapitiya Raja Maha Viharaya, Godapitiya, Akirassa.	
	M3	Nil								
Hambantota	H1	Nil								
	H2	Nil								
	H3	Nil								



Contract Package M2- Road ID 50A- Ch. 2+078 - 2+350 (RHS)



Contract Package M2- Road ID 50A- Ch. 2+226 – 2+275 (LHS)



Contract Package M2- Road ID 50A- Ch. 2+275 – 2+255 (LHS)



Contract Package M2- Road ID 50A- Ch. 2+355 – 2+495 (LHS)



Contract Package M2- Road ID 50A- Ch. 2+450 – 2+540 (LHS)



Contract Package M2- Road ID 50A- Ch. 2+495 – 2+520 (LHS)



Contract Package M2- Road ID 50A- Ch. 2+530 – 2+555 (LHS)



Contract Package M2- Road ID 50A- Ch. 2+078 - 2+350 (RHS)



Contract Package M2- Road ID 50A- Ch. 2+078 - 2+350 (RHS)



Contract Package M2- Road ID 50A- Ch. 2+613 – 2+800 (RHS)



Contract Package M2- Road ID 50A- Ch2+620 – 2+583. (LHS)



Contract Package M2- Road ID 50A- Ch. 2+689 – 2+245 (LHS)



Contract Package M2- Road ID 50A- Ch. 2+800 – 2+820 (RHS)



Contract Package M2- Road ID 57- Ch. 0+990 – 1+108 (RHS)