



Environmental and Social Monitoring Report

Project Number: 47273-004 /005 /006
Loan Numbers: Tranche 2 – 3221 /3222
Tranche 3 – 3325 /3326
Tranche 4 – 3610

Annual Report
December 2020

SRI: Integrated Road Investment Program

– Tranches 2, 3 & 4

PIC 03 – Sabaragamuwa, Central Provinces and
Kaluthara District

Prepared by the Road Development Authority, Ministry of Highways the Asian Development Bank.

This Environmental and social monitoring report is a document of the borrower. The views expressed herein do not necessarily represent those of ADB's Board of Directors, Management, or staff, and may be preliminary in nature. Your attention is directed to the "terms of use" section on ADB's website.¹ In preparing any country program or strategy, financing any project, or by making any designation of or reference to a particular territory or geographic area in this document, the Asian Development Bank does not intend to make any judgments as to the legal or other status of any territory or area

Asian Development Bank

DEMOCRATIC SOCIALIST REPUBLIC OF SRI LANKA
MINISTRY OF HIGHWAYS

Asian Development Bank Funded
Integrated Road Investment Program

Environment and Social Safeguard Monitoring report for the
Performance Based Maintenance period (Year 2020)
Of
Central, Sabaragamuwa Provinces and Kalutara District in Western
Province

Prepared by Project
Project Coordinating & Implementing Unit
Road Development Authority

Submitted to
Asian Development Bank

Content

1.0 Introduction	3
1.1 Project Description	4
1.2 Project Locations	4
Map1 : Project Location.....	4
2.0 Current project status in the Project	5
Map 2: Locations of 51 Nos. (194 km) roads in Matale District	5
Map 3. Locations of 50 Nos. (221.0 km) roads in Kandy District	5
Map 4. Locations of 43 Nos (180.0 km) roads in Nuwara Eliya District	6
Map 5. Locations of 63 Nos. (217.0 km) roads in Kegalle District.....	6
Map 6. Locations of 38 Nos (255.0 km) roads in Ratnapura District	7
Map 7 . Locations of 83 Nos. (277.0 km) roads in Kalutara District.....	7
3.0 Progress of the Project	8
4.0 Progress Photos of Performance Based Maintenance	9
5.0 Covid 19 action plan during the PBM period.....	15
6.0 Environment and social safeguard issues and mitigation measures implemented	15
7.0 Gender action plan and related activities	15
8.0 Conclusion	16

List of Abbreviations

ADB	Asian Development Bank
RDA	Road Development Authority
GoSL	Government of Sri Lanka
MFF	Multi-TrancheFinancial Facility
MoH	Ministry of Highways
IR	Involuntary Resettlement
PBM	Performance Base Maintenance
PIC	Project Implementing Consultant
CRC	Conventional Road Contract

1.0 Introduction

Integrated Road Investment Program (iRoad Program) funded by the Asian Development Bank (ADB) is a project implemented by the Government of Sri Lanka to improve connectivity between rural communities and socioeconomic centers by increasing transport efficiency of several selected national, provincial and local roads. Under this program, which is now in Tranche 4, around 3000 km of rural roads in Sabaragamuwa, Central, and Kalutara District in Western Province were developed and maintained for three years.

The project is executed as a Multi-Tranche Financial Facility (MFF). Ministry of Highways (MoH) is the executing agency for the project while the Road Development Authority (RDA) implements the project.

Improvement of 328 rural roads (1,344 km) in six Districts Matale, Kandy, Nuwara Eliya, Kegalle, Ratnapura and Kalutara, were improved under Project Implement Consultant (PIC) 03. A Project Implementation Unit (PIU) established in the Central and Sabaragamuwa Provinces and Kalutara District in Western Province. Civil works in each district under PIC (03) had been covered by three contracts identified as contract packages. Table 1 presents types of roads that are covered by the project and their lengths.

Table 1.1: Project road sections and their lengths in six districts

Province	District	No. of Packages	PS/(Km)	PRDA/(Km)	PS & PRDA/(Km)	MC/(km)	PS & MC/(Km)	UC/(Km)	Estate (Km)	PS & Estate (Km)	PS,PRDA & Estate (Km)	PRDA, PS, MASL (Km)	Total (Km)
Central Province	Matale	3	109.9	29.9	24.3	25.8						4.1	194.0
	Kandy	3	71.8	72.5	76.7								221.0
	Nuwara Eliya	3	61.05	12.5	32.9				2	62.05	9.5		180.0
Sabaragamuwa Province	Kegalle	3	108.36	66.65	41.24			0.87					217.0
	Ratnapura	3	28.01	149.44	77.55								255.0
Western Province	Kalutara	3	232.1	21.1	18.9	1.7	3.2						277.0
Total Length/ Km		18	611.22	352.09	271.59	27.5	3.2	0.87	2	62.05	9.5	4.1	1344.0

1.1 Project Description

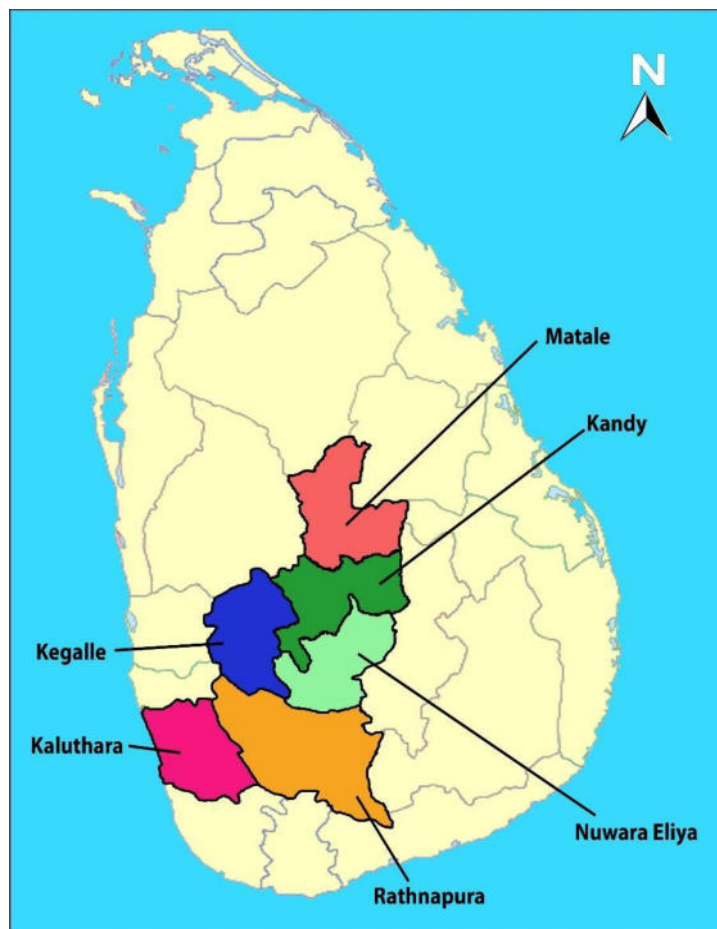
The project mainly focused on rehabilitation of existing carriageway to suit all weather conditions. The improvements were done within the available Right of Way (ROW) of the candidate roads.

The project is now under performance-based maintenance (PBM) period.

This report presents the findings of the monitoring on environment and social safeguard compliance in maintenance period in PIC3. The report covers the entire period from January to December 2020 for environment safeguards and social safeguards. As the environment specialist and social, gender & resettlement specialist of PIC3 has been demobilized, this report is developed by the project coordinating and implementing unit (PMU).

1.2 Project Locations

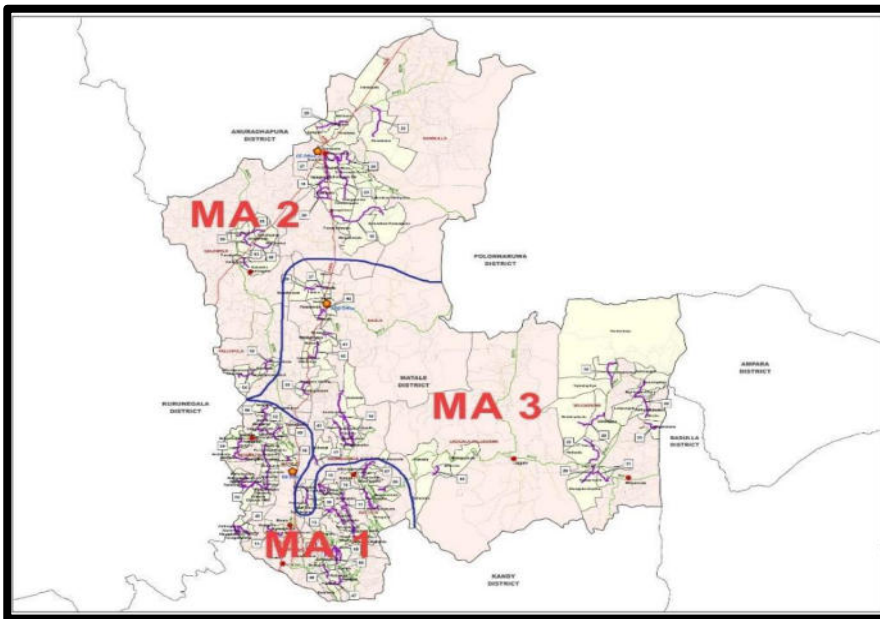
There are 6 administration Districts included in projects. Those are Matale, Kandy and Nuwara Eliya Districts in Central Province, Kegalle and Rathnapura Districts in Sabaragamuwa Province and Kaluthara District in Western Province.



Map1 : Project Location

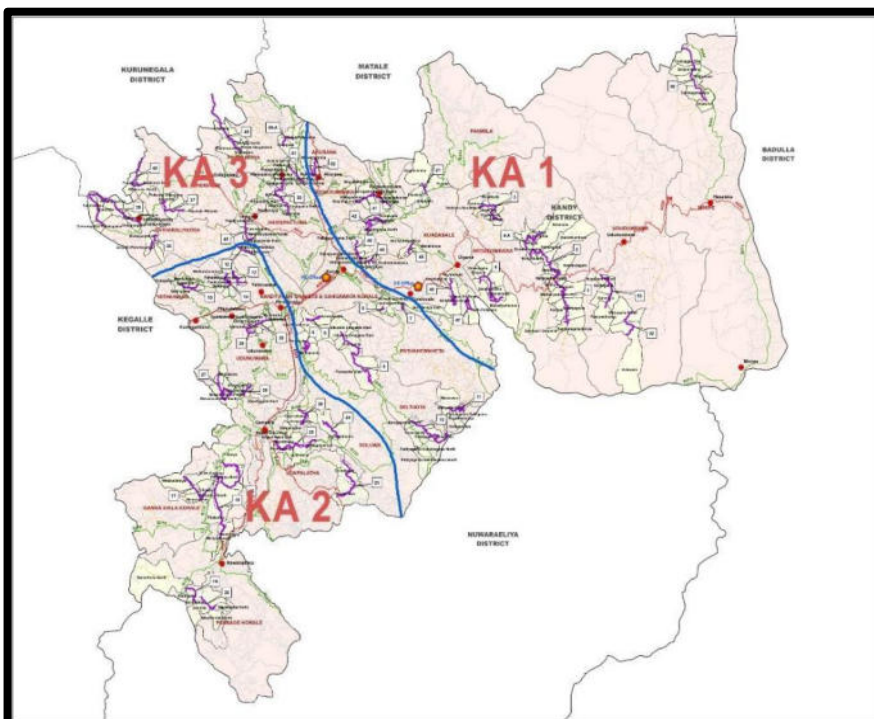
2.0 Current project status in the Project

The locations of 51 Nos. (194.0km) roads in Matale District are shown in Map 2 below



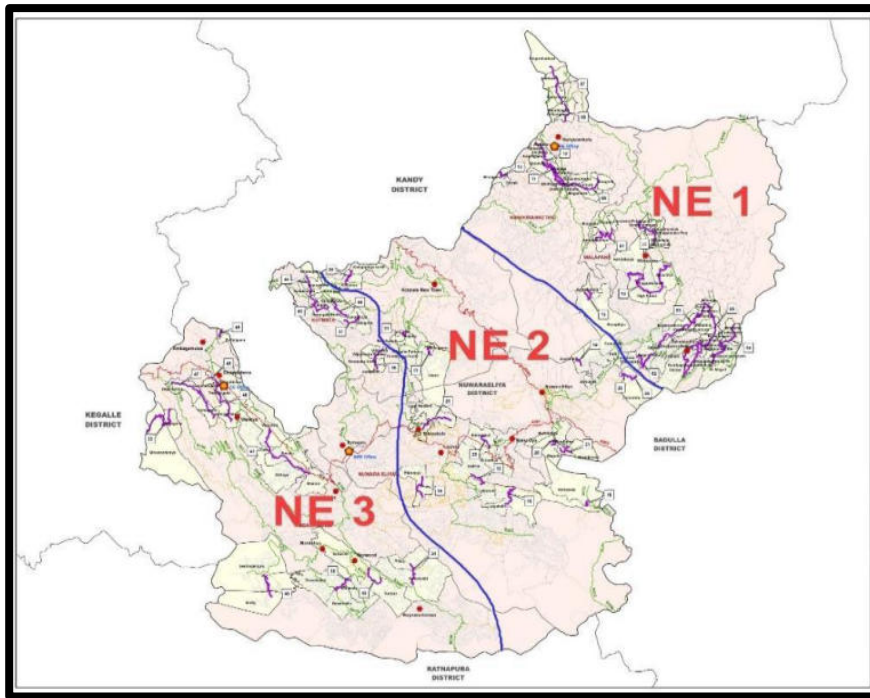
Map 2: Locations of 51 Nos. (194 km) roads in Matale District

The locations of 50 Nos. (221.0km) roads in Kandy District are shown in Map 3 below



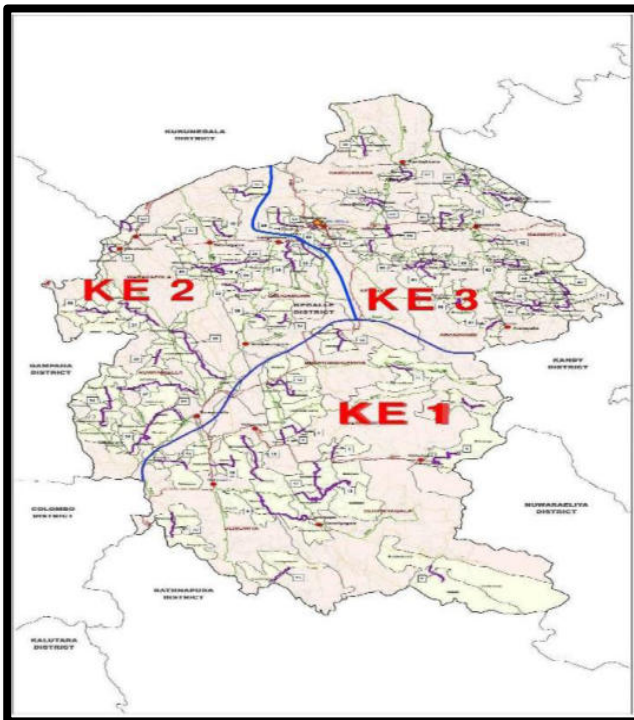
Map 3. Locations of 50 Nos. (221.0 km) roads in Kandy District

The locations of 43 Nos. (180.0 km) roads in Nuwara Eliya District are shown in Map 4 below



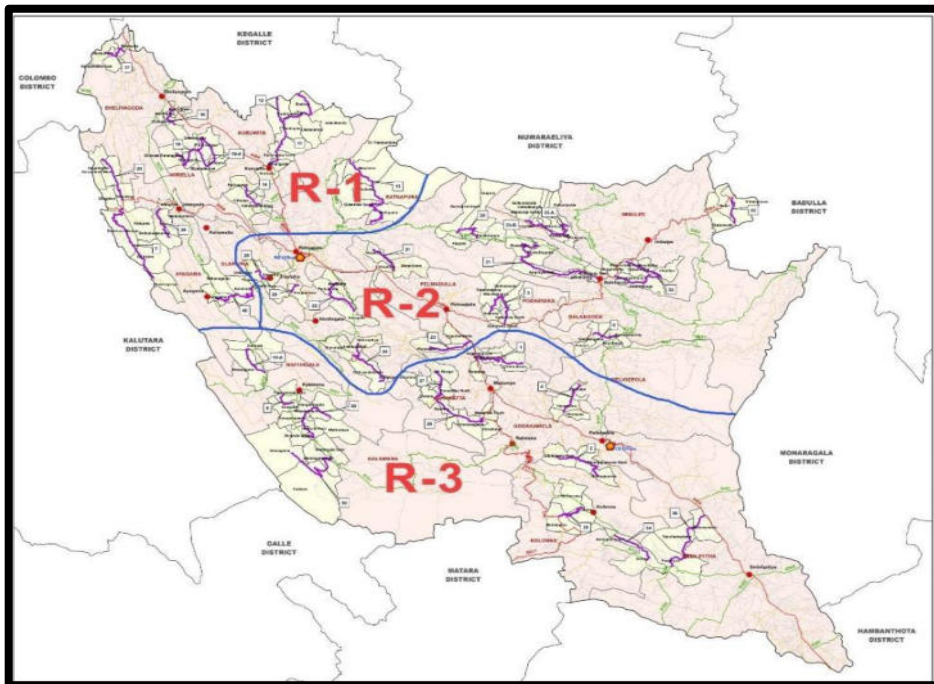
Map 4. Locations of 43 Nos (180.0 km) roads in Nuwara Eliya District

The locations of 63 Nos. (217.0 km) roads in Kegalle District are shown in Map 5



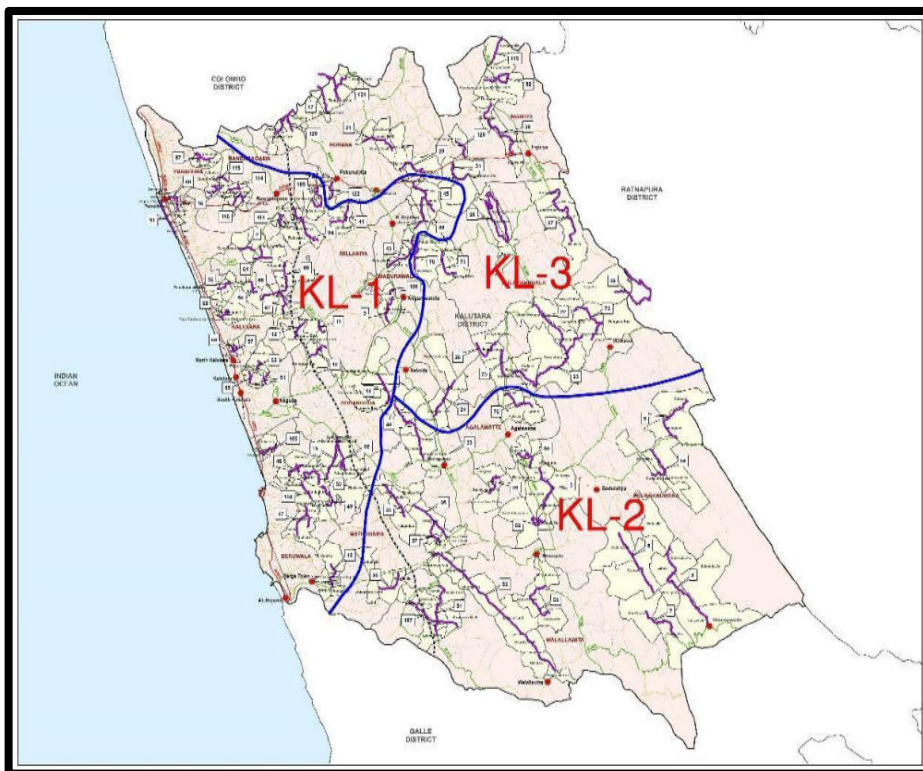
Map 5. Locations of 63 Nos. (217.0 km) roads in Kegalle District

The locations of 38 Nos. (255.0km) roads in Ratnapura District are shown in Map 6 below



Map 6. Locations of 38 Nos (255.0 km) roads in Ratnapura District

The locations of 83 Nos. (277.0km) roads in Kalutara District are shown in Map 7 below



Map 7 . Locations of 83 Nos. (277.0 km) roads in Kalutara District

3.0 Progress of the Project

Below table summarized the status of each contract package

Province	District	Package	Present Status
Central	Matale	MA1	Constructions are currently stopped
		MA2	Within Performance Based Maintenance Period
		MA3	Within Performance Based Maintenance Period
	Kandy	KA1	Within Performance Based Maintenance Period
		KA2	Within Performance Based Maintenance Period
		KA3	Within Performance Based Maintenance Period
	Nuwara Eliya	NE1	6 Roads under Performance Based Maintenance Period and 8 Roads under construction
		NE2	Within Performance Based Maintenance Period
		NE3	Within Performance Based Maintenance Period
Sabaragamuwa	Rathnapura	R01	Handed over to RDA
		R02	Handed over to RDA
		R03	Within Performance Based Maintenance Period
	Kegalla	KE01	Handed over to RDA
		KE02	Within Performance Based Maintenance Period
		KE03	Within Performance Based Maintenance Period
Western	Kalutara	KL01	Within Performance Based Maintenance Period
		KL02	Terminated
		KL03	Terminated

Table 1: Present status of each CRC package in Central province, Sabaragamuwa Province and Kalutara District in Western Province

Activities carried out during the PBM in each package include,

(01). Routing Maintenance

- Grass Cutting
- Drain Clearing
- Debris removal
- Shoulders Erosion Maintenance
- Sign Board Repair

- Road Mark Maintenance
- (02). Emergency Maintenance
- Removal of debris and other obstacles

4.0 Progress Photos of Performance Based Maintenance

Below photographs taken at site illustrate the activities carried out during the PBM in Central Province

4.1 Mathale District (MA02 & MA03 Packages)



Figure 1: Grass cutting at road shoulders



Figure 2 : Grass cutting



Figure 3: Grass cutting & shoulder maintaining

4.2 Kandy District (KA01, KA02 & KA03 Packages)



Figure 4: Sign board repairing



Figure 5: Grass cutting & drainage cleaning

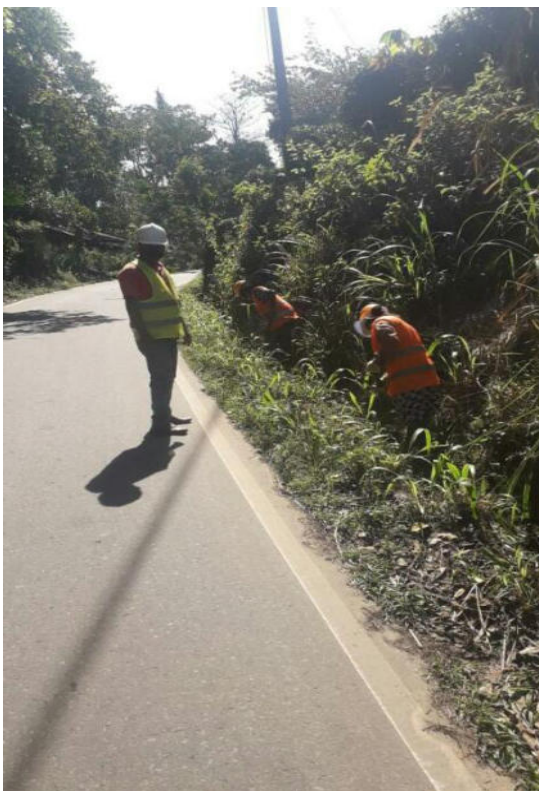


Figure 6: Drain cleaning

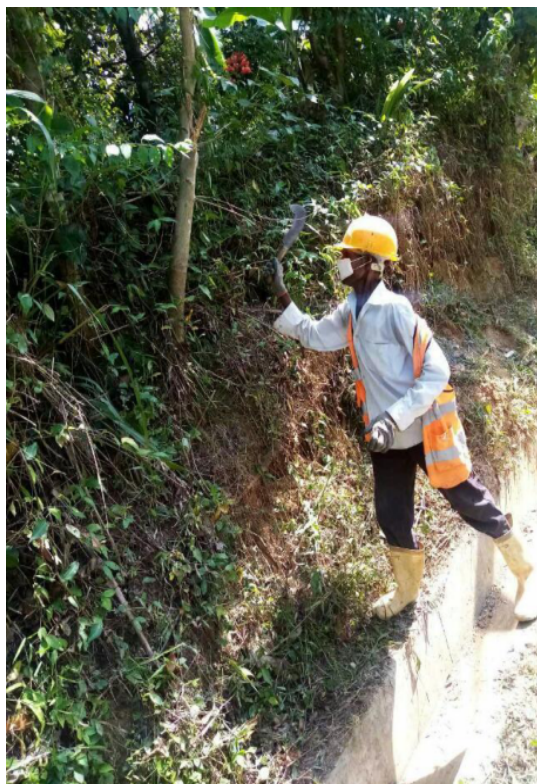


Figure 7: Branch removing



Figure 8: Removal of debris and other obstacles

4.3 Nuwaraeliya District (NE01, NE02 & NE03)



Figure 9: Grass cutting



Figure 10: Shoulder cleaning



Figure 11: Drain cleaning



Figure 12 : Road Mark Maintenance



Figure 13: Culvert cleaning

Below photographs taken at site illustrate the activities carried out during the PBM in Sabaragamuwa Province.

4.5 Rathnapura District (R3 Package)



Figure 14: Cleaning of line drain



Figure 15: Grass cutting



Figure 16: Removing slipped soil



Figure 17 : Road under PBM

4.6 Kegalle District (KE02 & KE03 packages)



Figure 18: Removing slipped soil



Figure 19 : Grass cutting

4.7 Kaluthara District (KL01)



Figure 20: Drainage cleaning



Figure 21 : Grass cutting Shoulder maintenance

5.0 Covid 19 action plan during the PBM period

The current COVID 19 pandemics, following guidelines were practiced in the site

- Wear face mask for employees
- Maintain 1m distance during maintenance activities
- Take the temperature of all personnel and ensure that they wash their hands before entering the site or the project office.
- Liquid soap, disposable disinfecting towels, alcohol-based gel and/or liquid alcohol. - Stations for hand washing at various points of the site (at the entrance, dining room, temporary offices, operating plant, etc.)

6.0 Environment and social safeguard issues and mitigation measures implemented

The grievance redress mechanism that was set up during the road rehabilitation and improvement period continued in to the PBM period. The grievance redress committees established were functional mainly with participation of the village members.

No new construction activities were involved during the reporting period and no voluntary land donations were required during the reporting period.

No serious environment or social issue had arisen during the reporting period. This is mainly since the project is now involved only in road maintenance work. Therefore, no public complaint on environment or social safeguard had been directed to the PIU, consultant or respective contractors.

7.0 Gender action plan and related activities

Some of the road maintenance work gangs include women labours and is complying with the requirements stipulated in the gender action plan.

No training programs or community development programs were carried out during the reporting period.

8.0 Conclusion

This report is developed to present the environment and social safeguard compliance monitoring findings under the PIC 03 iRoad program which is now in the PBM period. No significant environment or social issues was reported during this reporting period.

As there shall be no significant social issues it is recommended that the next social safeguard monitoring report is also prepared on an annual basis.