

Environmental Monitoring Report

Semi-Annual Report no. 9
For the period covered January-June 2021
Project Numbers: 47381-002, 47381-005
July 2021

Sri Lanka: Mahaweli Water Security Investment Program – Tranches 1 and 2

Upper Elahera Canal Project (UECP)

Prepared by Ministry of Irrigation with the assistance of Program Management, Design and Supervision Consultant (Joint Venture Tractebel Engineering GmbH – GeoConsult ZT GmbH) for Democratic Socialist Republic of Sri Lanka and the Asian Development Bank.

This environmental monitoring report is a document of the borrower. The views expressed herein do not necessarily represent those of ADB's Board of Directors, Management, or staff, and may be preliminary in nature.

In preparing any country program or strategy, financing any project, or by making any designation of or reference to a particular territory or geographic area in this document, the Asian Development Bank does not intend to make any judgments as to the legal or other status of any territory or area.

TRACTEBEL

ENGIE
With the trusted expertise of

LAHMEYER
INTERNATIONAL

GC
GEOCONSULT

InfotechsIDEAS
KNOWLEDGE. INNOVATION. SOLUTIONS.

ENGINEERING
CONSULTANTS (PVT)
LIMITED

NIRAS

PROGRAM MANAGEMENT, DESIGN AND SUPERVISION CONSULTANT

Mahaweli Water Security Investment Program

Semi Annual Environmental Monitoring Report (SAEMR) No. 09 (January to June 2021) for Upper Elaheera Canal Project (UECP)



Ministry of Irrigation
Sri Lanka



July 2021
Report

TRACTEBEL ENGINEERING GMBH

Friedberger Straße 173 – 61118 Bad Vilbel – Germany

Tel.: +49 6101 55-0 – Fax: +49 6101 55-2222

info-de@tractebel.engie.com

www.tractebel-engie.com**SAEMR No. 09 for UECP**

Project Number H.503409
Subject Project Report
Project Director Dr. Beau Freeman
Country Sri Lanka

Project Title: **Mahaweli Water Security Investment Program**

Client Ministry of Irrigation

Prepared for Program Management Unit
Mahaweli Water Security Investment Program
No. 493 1/1 Jayah Mawatha
Colombo 10
Sri Lanka

Prepared by Program Management, Design and Supervision Consultant
Joint Venture Tractebel Engineering GmbH – GeoConsult ZT GmbH
in Association with NIRAS (Denmark),
Engineering Consultants Ltd. (Sri Lanka), and
Infotechs IDEAS (Pvt) (Ltd.) (Sri Lanka)
No. 493 T.B. Jayah Mawatha
Colombo 10
Sri Lanka

Tractebel Engineering (main office)
Friedberger Str. 173
61118 Bad Vilbel, Germany
Phone: +49 6101 55 1810
beau.freeman@tractebel.engie.com

Revision	Date	Status	Author	Checked	Approved
0	04 Aug 2021	Approved	Anusha Kasige	B. Freeman	B. Freeman

© TRACTEBEL ENGINEERING GmbH, 2021

The information contained in this document is proprietary, protected and solely for the use of the Client identified on the cover sheet for the purpose for which it has been prepared. Tractebel Engineering GmbH undertakes no duty, nor accepts any responsibility, to any third party who may wish to rely upon this document.

Save to the extent agreed otherwise with the Client all rights are reserved and no section or element of this document may be removed from this document, reproduced, electronically stored, or transmitted in any form without written permission of Tractebel Engineering GmbH.

LIST OF ABBREVIATIONS

ADB	Asian Development Bank
AIS	Alien Invasive Species
CEA	Central Environmental Authority
CEMP	Contractor's Environmental Management Plan
D&B	Drill and Blast
D/S	Down Stream
DS	Divisional Secretary
DWC	Department of Wildlife Conservation
EARF	Environmental Assessment Review Framework
EIA	Environmental Impact Assessment
EMP	Environmental Management Plan
EMS	Environmental Method Statements
	Environmental Monitoring Specialist
EO	Environmental Officer
EPL	Environmental Protection License
FAM	Facility Administration Manual
FD	Forest Department
GoSL	Government of Sri Lanka
GRC	Grievance Redress Committee
GSMB	Geological Survey and Mines Bureau
ICB	International contractor bidding
IML	Industrial Mining License
KMTC	Kaluganga Moragahakanda Transfer canal
MIT	Mahakithula Inlet Tunnel
MLBCRP	Minipe Left Bank Canal Rehabilitation Project
MMDE	Ministry of Mahaweli Development and Environment
MRB	Mahaweli River Basin
MWSIP	Mahaweli Water Security Investment Program
NATM	New Austrian Tunnelling Method
NCB	National Contractor bidding
NWPCP	North Western Canal Project
PD	Program Director/Project Director
PIU	Project Implementation Unit
PMDSC	Project Management Design Supervision Consultant
PMU	Program Management Unit
RE	Resident Engineer
SAEMR	Semi Annual Environmental Monitoring Report
SPS	Safeguard Policy Statement
SEO	Senior Environmental Officer
STC	State Timber Cooperation
TBM	Tunnel Boring Machine
UECP	Upper Elahera Canal Project
MRB	Mahaweli River Basin
MWSIP	Mahaweli Water Security Investment Program
NATM	New Austrian Tunnelling Method
NCB	National Contractor bidding
NWPCP	North Western Canal Project
PD	Program Director/Project Director
PIU	Project Implementation Unit
PMDSC	Project Management Design Supervision Consultant
PMU	Program Management Unit
RE	Resident Engineer
SAEMR	Semi Annual Environmental Monitoring Report
SPS	Safeguard Policy Statement
SEO	Senior Environmental Officer
STC	State Timber Cooperation
TBM	Tunnel Boring Machine
UECP	Upper Elahera Canal Project

TABLE OF CONTENTS

1	INTRODUCTION	1
1.1	Scope of the Report.....	1
1.2	Overall Progress of UECP as of June 2021	1
1.2.1	UECP-ICB-1	4
1.2.2	UECP-ICB-2A.....	5
1.2.3	UECP-ICB-2B.....	6
2	SCOPE CHANGES IN THE UECP	8
2.1	UECP-ICB-2B.....	8
2.2	UECP-ICB-2A.....	9
3	ENVIRONMENTAL MONITORING FINDINGS	10
3.1	UECP-ICB-1	10
3.2	UECP-ICB-2A.....	13
3.3	UECP-ICB-2B.....	14
4	CONSULTATIONS, MEETING CARRIED OUT UNDER UECP DURING THE REPORTING PERIOD	19
5	PROPOSED ACTIVITIES FOR NEXT REPORTING PERIOD (JULY TO DECEMBER 2021)	21

LIST OF ANNEXES

Annex 1: List of Trees (12 Numbers) identified in 2020 for felling under Section “d” rehabilitation

Annex 2: List of Trees (110 Numbers) identified in 2021 for felling under Section “d” rehabilitation

Annex 3: Meeting Minutes related to UECP-ICB-1with DWC

Annex 4: Photographic evidence and Species List on Critical Species Translocation UECP-ICB-2A (Palugaswewa)

Annex 5: Actions Taken on Soil Erosion Incident in Palugaswewa – UECP-ICB-2A

LIST OF FIGURES

Figure 1-1: Map of the UEC-ICB 1 area	4
Figure 1-2: Overall package progress of UECP-ICB-1 as of end June 2021	5
Figure 1-3: General Layout Plan for UECP-2A	6
Figure 1-4: Map of UECP-ICB-2B sub-project area	7
Figure 1-5: Overall package progress of UECP-ICB-2B as of end June 2021	7
Figure 3-1: Photos of abandoned contractor facilities by end of reporting period	12
Figure 3-2: Photographic Evidence in UECP-ICB-2B Area during the reporting period	18

LIST OF TABLES

Table 1-1: Summary of ongoing construction packages in the UECP	2
Table 1-2: Progress of Ongoing Contract Packages	2
Table 1-3: Progress of upcoming packages under UECP as of December 2020	3
Table 3-1: Summary of the disposal, stockpile sites in UECP-ICB 1 area	10
Table 3-2: Reforestation summary in UECP-ICB 1 area	13
Table 3-3: Environment Safeguard Management and Key Actions related to UECP-2A within the Reporting Period	13
Table 3-4: Summary of the monitoring findings related to UECP-ICB-2B with specific issues	14
Table 3-5: Summary of NCR and EIR issued during the monitoring period for UEC ICB 2B	15
Table 4-1: Construction based events carried out during the monitoring period	19
Table 4-2: Summary of the other meetings, awareness sessions conducted under KMTC	20
Table 5-1: Key activities planned for next reporting period	21

1 INTRODUCTION

1.1 Scope of the Report

1. This Semi-Annual Environmental Monitoring Report (SAEMR) No. 9 is prepared to update the progress of Upper Elahera Canal Project (UECP)¹ with respect to environmental safeguard aspects for the period of July to December 2020, which fulfils the Asian Development Bank (ADB) requirement to submit SAEMR to ADB and Central Environmental Authority (CEA) for the “Category A” projects as documented in FAM² and EARF.³

2. The purpose of this report is to ensure that the Program is implemented with due concern for environmental and social safeguards according to the laws of Sri Lanka and ADB’s Safeguard Policy Statement (SPS) 2009, and specifically to ensure that these issues are adequately addressed in compliance with the requirements of ADB.

3. Further, this report assesses the progress with implementation of the Program in complying with the approved Environmental Impact Assessment (EIA),⁴ including the Addendum to the EIA: UECP Tranche 1 packages (August 2017) and Environmental Management Plan (EMP) as per the stipulation No. 14.3 of the EIA approval No. 08/EIA/WATER/07/2012 issued by CEA on 23 February 2016, renewed approval by CEA on 23 May 19 by letter Ref.08/EIA/Water/07/2012/Vol IV until 31 March 2022, and approval for the addendum (Ref.08/EIA/Water/07/2012/Vol III dated 23 April 2018).

4. This SAEMR is prepared addressing the following aspects, based on the available information for the monitoring period from January to June 2021:

- (i) Background/ context of the monitoring report (adequate information on the Program, including physical progress of project activities, scope of monitoring report, reporting period, and the monitoring requirements including frequency of submission as agreed upon with ADB)
- (ii) Qualitative and quantitative monitoring data
- (iii) Monitoring results compared with previously established benchmarks and compliance status (e.g., obtaining necessary approvals for establishment of certain facilities, timeliness, and adequacy of environmental mitigation measures; and training, capacity building, etc.)
- (iv) Corrective action plan in any case of non-compliance or any major gaps identified
- (v) Proposed items of focus for the next reporting period and due date

5. This SAEMR for UECP is prepared by the Environmental Specialist of PMDSC based on the monthly monitoring and progress reports received from the Environmental Monitoring Specialists (EMS), and the updates that were received from the respective contractors and Resident Engineers (REs).

1.2 Overall Progress of UECP as of June 2021

6. There are three active contract packages under construction by end June 2021, which include UECP-ICB-1 UECP-ICB-2A and UECP-ICB-2B financed under MWSIP Tranche 1 and 2. The new contract package for the longest tunnel of 27 km named as UECP-ICB-2A commenced in March 2021. The key details related to the active construction packages are summarized in **Table 1-1**.

¹ Terminology for Upper Elahera Canal Project (UECP) is replaced with North Central Province Canal (NCPCP)

² Paragraph 60 of Facility Administration Manual (FAM), June 2015 prepared by MMDE.

³ Paragraph 111 of Environmental Assessment Review Framework (EARF) November 2014 (updated in June 2017) by MMDE.

⁴ Environmental Impact Assessment Report (EIAR) dated June 2015 and approved by CEA on 31.03.2016

Table 1-1: Summary of ongoing construction packages in the UECP

Item	UECP-ICB-1	UECP-ICB-2A	UECP-ICB-2B
Contract No.	MMDE/MWSIP/ADB/UEC/ICB-1/3267-3268-SRI/ICB/2016/002	MMDE/MWSIP/ADB/UECP/ICB-2A/P47381-005-SRI/ICB/2017/006 CONTRACT PACKAGE UECP-ICB-2A	MMDE/MWSIP/ADB/UECP/ICB-2B/P47381-005-SRI/ICB/2016/026
Contractor	M/s. CML-MTD Construction Ltd.	China State Construction Engineering Corporation Ltd (Sri Lanka)	M/s. Sinohydro Corporation Ltd.
Commencement Date	11 January 2017	10 March 2021	14 September 2018
Value of Contract	LKR 3,742,442,875.47 (incl. VAT)	LKR 43,278,994,452.29 (incl. VAT)	LKR 8,218,957,075.94 (incl. VAT)
Original Completion Date	08 January 2020	09 March 2027	10 September 2021
Updated Completion Date	23 May 2021 (Amendment Agreement 2, further EOT in process)	N/A	12 December 2021

7. Overall progress of the three active contract packages under UECP are summarized in the **Table 1-2**.

Table 1-2: Progress of Ongoing Contract Packages

Contract	Status of Contractor's Work Program	Status of Submitting CEMP	Physical Progress			Contract Period	
			Original CP* (%)	Current CP (%)	Actual (%)	Original (months)	Forecast (months)
UECP-ICB-1	Commented on the submitted program only for monitoring purposes	2nd Revision of CEMP approved in May 2017 under "AN" status. But with the revised scope approval of CEMP is pending and no response for the comments made in April 2020	100	100	64	36	53
UECP-ICB-2A	Construction Program accepted with comments – will be revised.	1st revision submitted on 30 April 2021 (Ref. CSCEC-SLK-UECPICB2A-CONST-0099) but Returned for Resubmission (RR) due to not submitting a site-specific plan following the required ADB guidelines through letter Ref. PMDSC-SITE-ICB_2A-CSCEC-0112 on June 01, 2021. No revised report submitted.	1.9	-	1.1	72	72
UECP-ICB-2B	Construction Program accepted	Revision E of the CEMP was approved on 16.10.2019 through letter Ref. PMDSC-KMTC-RE/ICB-2B/ShCL/L578	98	70	57	36	46

Abbreviations: AN – Approved except as noted

8. Details related to the Tranche 3 packages under additional finance and their progress of bidding process in summarized under the **Table 1-3**.

Table 1-3: Progress of upcoming packages under UECP as of December 2020

Package (previous name)	Revised Abbreviated Name of Contract package	Scope	Status
UECP-ICB-3 (submitted the complete document on 09 March 2021)	NCPCP-3	Construction of North Central Province Canal from Kongetiya to Madethhawewa (from 3+980 km to 17+718 km) Including Balance Works from 0+100 km to 3+980 km Contract Package NCPCP-3	15.06.2021 (TEC Com.) 17.06.2021 (TEC meeting) 18.06.2021 (TEC Com.) Revision 1 submitted on 23.06.2021
UECP-ICB-4 (submitted the complete document on 21 May 2019)	NCPCP-4	North Central Province Canal from Madethhawewa to Main Tunnel Inlet at Konduruwawa (from 17+718 km to 27+509 km)	Environment Screening completed, and updated EMP prepared. Revision 5 of the bidding documents submitted to PMU on 11.06.2021
UECP-ICB-5 (submitted the complete document on 18 September 2020)	NCPCP-6	North Central Province Canal Construction of Transfer Canal from Yakalla to Maminiya Oya (from 0+000 km to 6+131 km), Improvements to Maminiya Oya (from 0+000 km to 13+309 km) and Improvements to Eru wewa Right Bank (RB) Canal to Kanadara Oya (from 0+000 km to 10+941 km)	Revision 3 of the bidding documents submitted to PMU on 11.06.2021

1.2.1 UECP-ICB-1

9. Construction of Upper Elaheira Canal (UEC) from 0+100 km to 3+980 km comes under the UECP-ICB-1 contract package, located within the ecologically sensitive, Elaheira-Girithale Sanctuary area. The corridor of the canal to be constructed as a cut and cover conduit, is temporary released by the Department of Wildlife Conservation (DWC) to the Ministry of Mahaweli Development (Mahaweli Authority of Sri Lanka – MASL). **Figure 1-1** shows the map on the sub-project area.



Figure 1-1: Map of the UEC-ICB 1 area

10. Package UECP-ICB-1 has been significantly behind schedule, and there are serious concerns about the financial stability of the Contractor (CML) and their contractual relationship to an investor associated with the package.

11. By end of the monitoring period of June 2021, there were 07 Milestones set by Amendment No. 02. Milestones No. 01, 02 and 03 are 100% completed and No. 04, 05, and 06 were to be completed by end of the 2020. Environmental Officer resigned from 15 February 2021 and a new officer was not appointed as of reporting date. Environmental matters were looked after by a nominated person.

12. The site has been abandoned with a stoppage in construction works from 12 May 2021 and daily routing works such maintenance of electrical fence, safety net and site clearing have not been carried out for 2 months period. The completion report on the environmental aspects in the package was prepared by EMS/ ES targeting contract termination. However, still the employer was not fully ready to take over the site fulfilling required environment safeguard aspects, which are addressed in the Environmental Contingency Report prepared for UECP-ICB-1 in June 2020 and submitted with PMU for necessary arrangements via letter Ref. 26.4 / 7.23_L03931 on 20 June 2020.⁵

⁵ Environment Contingency Plan for Termination of UECP-ICB-1 contract (June 2020) by PMDSC
<https://1drv.ms/b/s!Ahhjzel6UbyzhIFkE0BzB0vfno-uvQ?e=M7Nc3T>

13. Though the planned physical progress should reach 100% by January 2020, as per the revised program, only 64% of physical progress is achieved by June 2021 in UECP-ICB-1 package. The breakdown of the activity wise progress achievement by end June 2021, including physical and financial progress is shown in the **Figure 1-2**.

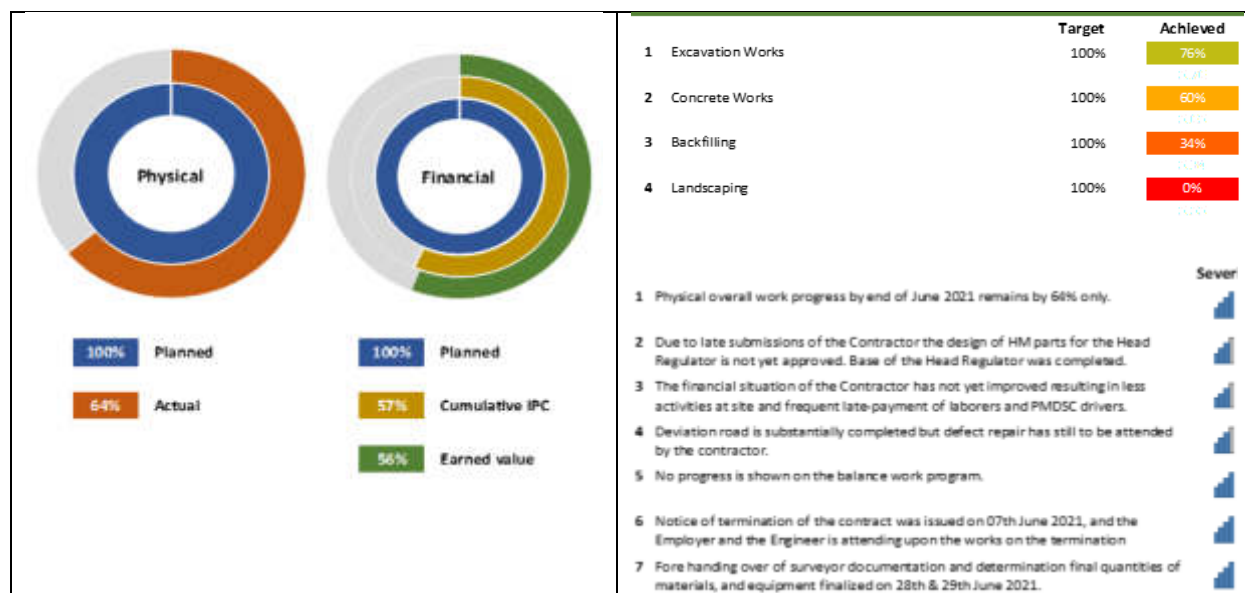


Figure 1-2: Overall package progress of UECP-ICB-1 as of end June 2021

1.2.2 UECP-ICB-2A

14. Contract Package UECP-ICB-2A comprises the construction of the 28.1 km long tunnel (from 27+509 km to 55+600 km), which includes 26.8-km long Tunnel 3 and 1.1 km long Tunnel 4, together with a short section of cut-and-cover canal at the inlet and outlet portals of the tunnels. The layout plan for the UECP-ICB-2A is given in **Figure 1-3**.

15. The sites of the Permanent Works under this Contract, which need to be accessed by the Contractor, are concentrated in two locations: (i) in the north, between the northern start shaft of Tunnel 3 and the northern portal of Tunnel 4; and (ii) in the south, at the southern portal of Tunnel 3. Both accesses of northern and southern portals are associated with ecologically and socially sensitive areas.

16. The northern portal area is very sensitive from a social and cultural point of view due to the presence of public, residential, and agricultural activities, and the ecological significance is also considerable high due to intense elephant movements and the presence of state forests under the purview of the Forest Department (FD), as well as the Local Government Authorities (LGA). Schools, temples, and the other related government institutions are the socially sensitive areas located close to the northern portal, and contractor facilities.

17. The Permanent Works sites and all associated site establishment areas and temporary works areas associated with the northern area are reached from the public road A11, between Ganewalpola and Habarana, turning off at Palugaswewa onto the road leading to Padikaramaduwa. The location of the northern start shaft is ca. 9.7 km from Palugaswewa, and the site of the northern portal of Tunnel 3 can be reached along 2.2 km of access road after turning off the Padikaramaduwa road after ca. 11.2 km.

18. The southern portal area and the associated facilities are in the Elahera – Girithale Sanctuary area, which includes many stream crossings and wild animal movements. The southern portal of Tunnel 3 is reached from

the public road B112, between Girithale and Bakamuna (the Elahera Road), turning off across the Elahera Minneriya Yoda Ela onto a track ca. 3.7 km north of the village of Aththanakadawala. The distance along the route of this track and its extension to the location of the southern portal of Tunnel 3 is ca. 4.5 km. The site establishment areas associated with the Works at and around the southern portal of Tunnel 3 are at two locations along this 4.5 km track route and also adjacent to the B112 at two locations – ca. 2 km north of Aththanakadawala; and on MMDE property in Aththanakadawala itself (designated for the Contractor's sub-camp).

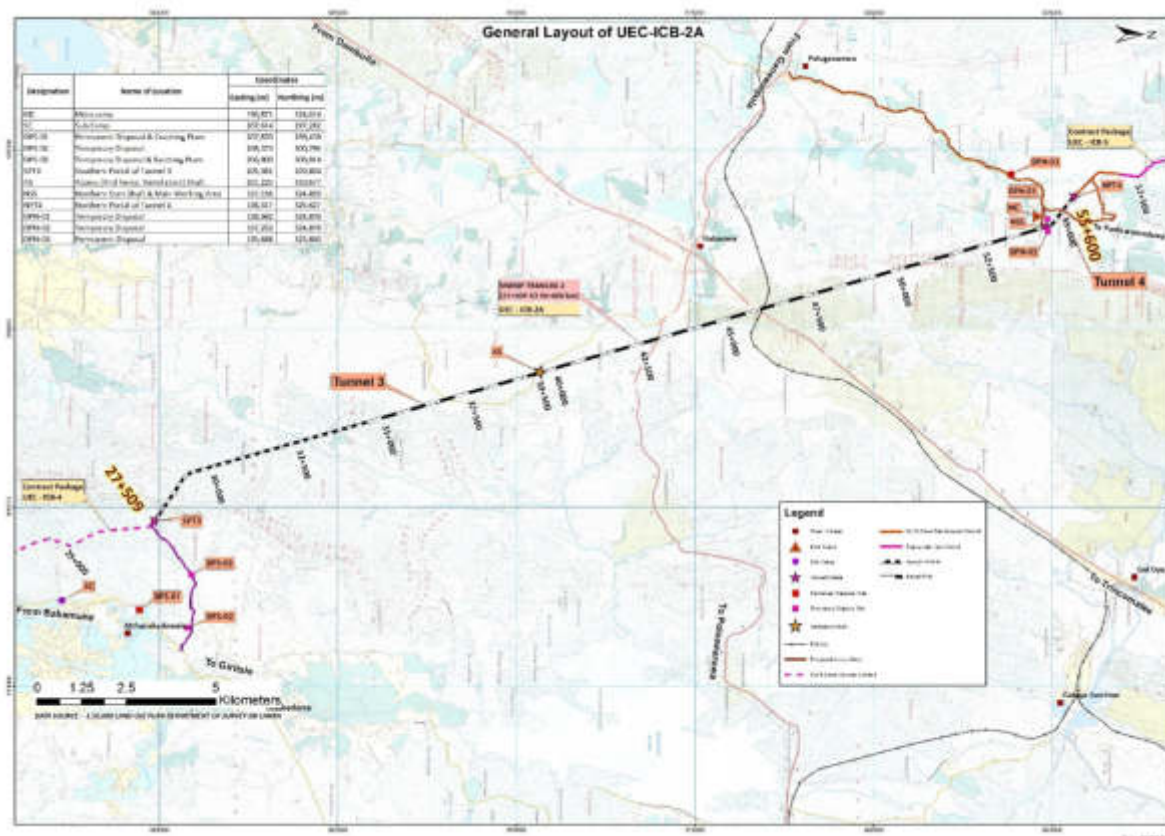


Figure 1-3: General Layout Plan for UECP-2A

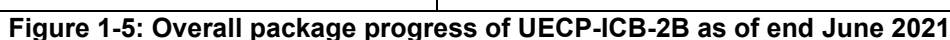
19. The key activities in progress under UECP-ICB-2A are the site establishment, including contractor's and engineer's office, camps. The key contractor's documents, including Contractor's Management Plan (CEMP), Waste Management Plan is delayed by the Contractor. The physical work progress by end June 2021 was recorded as 1% upon the planned progress of 2%.

1.2.3 UECP-ICB-2B

20. Construction of the Kaluganga – Moragahakanda link tunnel including short open canal and 2 aqueducts is the scope of work under UECP-ICB-2B contract package. The two tunnels traverse through Forest Department (FD) lands: Tunnel 1 of 1,910 m long (chainage 0+557.77 to 2+467.77 km) and with overburden varying between 5 and 80 m; Tunnel 2 of 6,040 m long (chainage 2+732.77 to 8+772.77 km) and with overburden varying between 6 and 378 m. **Figure 1-4** gives the sub-project area map on UECP-ICB-2B.



22. **Figure 1-5** shows the graphical representation of the overall progress of the UECP-ICB-2B package by end June 2021.



23. Major risks and concerns related to UECP-ICB-2B package identified during the reporting period includes, (i) open canal, aqueduct and access roads are delayed; (ii) disposal sites capacity is exceeded and no approval from CEA is granted for the new identified sites.

2 SCOPE CHANGES IN THE UECP

2.1 UECP-ICB-2B

24. The significant scope change related to UECP-2B is the increase of number of trees to be felled down in the access road to Kabarwa (Tunnel 2 outlet portal) known as section “d” shown in **Figure 1-4** of this SAEMR.

25. Referring to the Addendum to Environment Impact Assessment (EIA) prepared in July 2017, Section ‘d’ was an existing road trace appeared as a jeep track, 4 m wide single-track roadway of variable quality and surfacing. It was less demanding with respect to hairpin bends and general topography than the previous Section ‘c’ of the access road. Potholes and worn road surfaces were present at numerous locations along the 10 km distance.

26. Considerable improvement work was done with a minimum scope for increasing the general width of the roadway facilitating contractor to use the road for the construction work, material transport etc with minimum tree felling. Accordingly, there were only 12 trees was identified which were located in the road trace and drainage areas as per the approvals issued by Forest Department and the Divisional Secretary, Laggala in October 2020 (relevant letters are given as **Annex 1**).

Incident # 01 on 08.06.2021

- As per PIU invitation, District Forest Officer (DFO) attended site visit to damaged forest area in Beligoda to see CAP progress. On the way of DFO, observed that a few boundary posts belong to FD has been damaged by the Contractor during the road clearing.
- Hence, Excavator Operator and one of the site supervisors have been arrested with the excavator and these two guys have been released on bail of FD. However, legal actions are in progress against suspects.

Incident 02 in 10.06.2021

- As explained in Para 27 of above section related to Annex 2, tree list was prepared jointly with participating FD, PIU and PMDSC and identified 110 trees need to be removed for construction purposes. The tree list was sent to Divisional Secretary and FD to verify the land ownership.
- While waiting for FD approval, DS has sent an approval (Ref. 11/03/2/1/1 dated 30 April 2021) to State Timber Cooperation (STC) with copied to PD-PIU to remove 44 trees out of the 103 (trees belong to section 6+735 km to 10+600 km of Section “d” access road).
- Accordingly, the Engineer was informed by PD-PIU (Ref. UEC/PD/KMTC/PMDSC/2021/027) about the approval and instructed to take necessary action to remove the trees, then the Contractor was instructed to do tree removal work and removed trees stack in place safe until collect from STC.
- FD informed on 10.06.2021 after their site visit, only 19 trees belong to DS authority approval and balance of 44 belong to FD and they should be removed with FD approval. Further, FD said that additional 10 trees (Trees are not in the tree list) have been removed by STC.
- Based on this, now FD conduct an inquiry on the action of felling trees in a protected area without prior approval from FD

27. After this a decision was taken to implement the road expansion requested by the Employer, which required to fell 110 trees as per the list attached in the **Annex 2**. As per the letter issued by Range Forest Officer (RFO), Laggala on 23 April 2021 (Annex 2), except for 15 trees which are located in private lands, RFO has recommended to carry out an environment assessment prior to approve felling the trees which are located in protected areas (Knuckles Conservation Forest, Elagamuwa reserved forest, Dammnatota Reserve Forest).

28. However, a conflict situation has happened on 8 and 10 June 2021 (refer to the text box above) in the Section “d” area, due not following proper approval process via Forest Department (FD) as well as not complying with the “Thumb rule of ADB SPS (2009)” on “Critical habitats”, not understanding alternatives, and justifying road expansion in engineering and environmental point of view.

2.2 UECP-ICB-2A

29. With the intension of expediting tunnel work, the Employer has requested Engineer to consider options to reduce the completion time, and hence two options are being studied: (i) introducing a Central adit; (ii) introducing 2 TBMs from Southern Portal area. The Engineer is presently working on the design alternatives, and a supplementary report for the EIA will be completed considering environmental aspects related to the proposed scope changes.

30. An Engineering Special Report is submitted by PMDSC to the employer addressing possible environmental risks, followed by an Environment Screening during the reporting period.

3 ENVIRONMENTAL MONITORING FINDINGS

31. This section summarizes the key environmental issues recorded during the monitoring period from January to June 2021, and the corrective actions taken by the Contractors.

3.1 UECP-ICB-1

32. The Notice of Termination of the Contract was issued on 07 June 2021, with the Employer and Engineer attending required work for the contract termination. A series of discussions, and site visits were made with the Wildlife Conservation Department (DWC) regional office, followed by a meeting held on 17 March 2021, with the participation of DWC, PMDSC, PIU to discuss the site management after contract termination. Meeting minutes are given in **Annex 3**. However, finally employer has decided to attend required security and site maintenance under a separate contract through MASL.


33. Presence of open excavated sections with incomplete exposed iron bars result a significant risk to wild animals in the Elahera – Girithale Sanctuary area due to site termination. Out of the 75% of the excavated canal sections, it is only 34% where backfilling is completed. Rest of the 41 % of the canal (approx. 1+638 km length) which are less than 500 m continuous sections are left abandoned in the wildlife areas which are protected with electric fencing




34. In addition, natural water ways are blocked and bisected due to excavated canal, and restoration work is incomplete, specially at 1+203 km in section 1 and at 0+794 km in Section 4, which can cause impacts to the downstream environment flow hindering surface runoff.

35. The key contractor facilities including batching plant, disposal areas left unattended without site restoration and site access not completely blocked which can induce hunting, poaching, vandalism to the protected wildlife habitats. Employer has arranged security through Mahaweli Authority by end of the reporting period to the UECP-ICB-1 area.

36. Details of existing disposal sites at the contract termination by end of reporting period is given in the **Table 2-1**.

Table 3-1: Summary of the disposal, stockpile sites in UECP-ICB-1 area

Site Type	Site Location (chainage / GPS coordinates)	Ownership	Approximate Extent (ha)	Restoration / handing over status	Photographic evidence
Main temporary Disposal site 1	499588 578773	DWC/FD	1.46 ha, Average Height 4.5m	Not submitted any restoration plans, and not restored	

Site Type	Site Location (chainage / GPS coordinates)	Ownership	Approximate Extent (ha)	Restoration / handing over status	Photographic evidence
Temporary Disposal site 2-End point	499635 581218	DWC/FD	0.54 ha, Average Height 3.7m		
Temporary Disposal site 3-End point	499635 581205	DWC/FD	0.47 ha, Average Height- 2.9m		
Temporary Disposal site 4 along the trace	499855 577757	DWC/FD	0.57 ha Height 1.8m		
Temporary Disposal site- near section 4	499870 579490	DWC/FD	2.93 Acres		
Storage site	499656 578570	DWC/FD			

37. **Figure 3-1** shows some photographic evidence of the abandoned contractor facilities in UEC-ICB-1 area.


	
Batching plant	Crusher plant
	
Camp site	Contractor's office

Figure 3-1: Photos of abandoned contractor facilities by end of reporting period

38. Habitat enrichment of the UEC-ICB-1 area was commenced in 2019 in the backfilled areas under contractor's Provisional Sum Budget allocated for additional Environmental mitigations. **Table 2-2** summarizes the details. However, due to lack of maintenance the survival rate is low, and weedy shrubs has invaded the undergrowth.

Table 3-2: Reforestation summary in UECP-ICB-1 area


Site Location	Extent (ha)	Ownership	Reforestation works start date	Total Plants	Number of plants survived
0+986 km to 1+070 km	1680 m ²	DWC	January 2019	381	226 (59.2%)
0+986 to 1+150 km	2400 m ²		December 2019		

3.2 UECP-ICB-2A

39. Though there was no significant progress of the construction related aspects because only site establishment activities were underway, a significant environmental issue was recorded in Northern portal area due to unmanaged site clearing without having a proper Method Statement (MS) and not implementing required environmental management measures.

40. Table 3-3 summarizes the key environmental monitoring findings and actions taken by PMDSC related to Environment safeguard management.

Table 3-3: Environment Safeguard Management and Key Actions related to UECP-2A within the Reporting Period

Item	Remarks
Contractor's Environment Officer (EO)	CV submitted by CSCEC (contractor) was approved on probationary basis due to lack of adequate experience in similar work, and training was given by PMDSC on key governing documents, MWSIP environment Safeguard Management as well as on preparing CEMP, and MS on 18 March 2021 in CRE office Dambulla.
Tree felling in the areas allocated for Contractor/ Engineer Facilities, disposal site, camp area at Northern portal	<ul style="list-style-type: none"> No detail baseline eco-survey done as planned by PMU through IUCN / selected sub-consultant as PMU was unable to complete the procurement process at the CSCEC contract award However, Baseline eco survey was carried out in 2017 during the environment screening to prepare the Addendum to EIA, and the information already included in the addendum to EIA (2017) Tree felling was urgent, and already commenced in Northern Portal area (area where contractor facilities / disposal site established), and hence, to expedite the process - PIU/PMU requested PMDSC to carry out species translocation during tree felling As the site was already disturbed when PMDSC attended species translocation with help of field assistants and DWC/FD officers in the areas DPN 1 (disposal area), B (main site) and camp area as per the below map.  <ul style="list-style-type: none"> This exercise was carried out to comply with the Section 4.6 of Wildlife Management Plan for UECP (linked with CEA approval condition sub-clause 2.2) Annex 4 provides list of species translocated, and photographic evidence

Item	Remarks
Contractor's Environment Management Plan (CEMP)	<ul style="list-style-type: none"> Reviewed the CEMP and comments shared with the contractor by 01 June instructing to Return and Resubmit the CEMP due to lack of required details and poor reporting
Replace of approved EO of UEC-2A	<ul style="list-style-type: none"> The EO approved on probationary basis was terminated by end May 2021, due to his incompetency and lack of performance to attend required corrective measures, not having sufficient knowledge on documentation, not take part at field monitoring inspections, environmental audits etc., insufficient presence at the site to attend and contribute to required planning and corrective measures etc.
Non-Conformance Report (NCR) No. 1	<ul style="list-style-type: none"> was issued to the Contractor on 19 May 2021, due to not attending the soil erosion and sedimentation corrective actions during site establishment at Northern portal, and siltation of adjacent irrigation tank As explained in the Annex 5, several efforts have been taken by PMDSC to guide the contractor but was not fully successful mitigating the siltation of the adjacent tank due to washing of cleared lands. Hence, NCR No. 01 was issued, and the corrective actions are not yet completed until the end June. Hence, NCR is still open.

3.3 UECP-ICB-2B

41. Environmental safeguard compliance by the Synohydro has significantly improved except for some operational environmental issues observed during the monitoring period from January to June 2021.

42. **Table 3-4** summarizes the specific issues noted and status of the Contractor's response attending to the required corrective actions.

Table 3-4: Summary of the monitoring findings related to UECP-ICB-2B with specific issues

Location	Environmental Issue	Date of Record	Corrective Measure	Date Attended
Tunnel 1 inlet and aqueduct 01	Disturbed stream and landscape due to excavation	21 May 2021	Stream restoration to be done after completed the excavation	Pending
	Sedimentation tanks prepared for wastewater treatment of tunnel is not connected with system	11 Dec. 2020	Sedimentation tank was connected to the tunnel, and it is functioned	29 April 2021
Tunnel 1 outlet and aqueduct 02	Mixing cement into Lel oya stream during the concreting	08 May 2021	Covered the stream with sheet	24 May 2021
	Turbidity water released from tunnel inside contaminated with Lel oya stream through overflowing sedimentation tank	05 Feb. 2021	Lel Oya was cleaned and Water was collected from sedimentation tank and used to dust controlling	16 Feb. 2021
Tunnel 2 outlet- Kabarawa	No safe location for collecting sludge generating from sedimentation tank of Batching plant	09 April 2021	Prepared separate location for sludge collecting	06 June 2021
	Poor housekeeping is practiced in surrounding area of campsite/workshop	09 April 2021	Separate person to be appointed to collect solid waste	Pending
Batching plant at Lel Oya	No drainage system to manage storm water	10 May 2021	Proper drainage system is required	Pending
	Untidy condition in surrounding due to mud and cement sludge at Batching plant	10 May 2021	It should be tidied up regularly	Pending
	Huge cement dust is emitted from silo and take place air pollution	02 June 2021	Repaired the silo for not emitting dust to the surroundings	06 June 2021
Open canal	Toilet facilities to be provided for female/male workers	23 April 2021	Provided toilet facilities by constructing the temporary toilet	14 May 2021







Section -d	Approval to be taken by relevant authority for disposal site	02 April 2021	Approval has taken for 04 disposal site from DS -Laggala	05 May 2021
	Better surface to be maintained for motorable condition in road -d	04 June 2021	Action has not taken	Pending
	Dust controlling to be carried out as per the scheduled	04 June 2021	Deployed the water bowser to control dust	08 May 2021

43. The summary of the Environment Non-compliance Reports (NCRs) or issuing Environment Incident Records (EIRs) during the reporting period is given in the **Table 3-5**.

Table 3-5: Summary of NCR and EIR issued during the monitoring period for UECP-ICB-2B

NCR / Env Incident records (Ref. No. & Date)	Subject	Response from the contractor (Ref/Date)		Corrective actions attended		Remarks as per EMS observations / close NCR	
		Ref No.	Date	Action	Date completed	Follow up letter Ref	Date
PMDSC-KMTC-RE/ICB-2B/ShCL/L49, 12th September 2019	NCR No. 004 for Disposing excavated earth materials on the slope of access road section -f	L-KMTC-2019422	02 Oct 2019	Removed loose earth section as much as possible and developed the drainage system and covered slop toe with mucking materials. Planted some of the creepers on slop	12 March 2021	NCR was closed	21 April 2021
NCR-011 22 Feb. 2021	Violating of condition of the EPL-issued CEA	L-KMTC-2021180	04 May 2021	Constructed new tank and stopped connecting each other of sedimentation process of Both BP and QDWP. Formed the new location for sludge disposal on the top the DS. Cleaning the plant premises regularly.	02 May 2021	PMDSC-KMTC-RE/ICB-2B/ShCL/L201	18 May 2021
PMDSC-KMTC-RE/ICB-2B/ShCL/L1109, 15 March 2021	Dirty water discharged to Lel Oya stream	L-KMTC-2021114	18 March 2021	Sludge was removed from the drain, prepared separated and confined location for sludge removal	16 March 2021	N/A	N/A

44. Some photographic records on the key aspects during environmental monitoring under UECP-ICB-2B are shown in **Figure 3-2**.

	
<p>Poor housekeeping - 12 Jan. 2021</p>	<p>Action taken cleaned and tidy condition - 27 Jan. 2020</p>
	
<p>No action taken for renovating the Sedimentation tank, BP-Lel oya - 11 Feb. 2021</p>	<p>Renovated the sedimentation tanks - 22 Feb. 2021</p>
	
<p>No brushwood added in Damaged Forest area - 26 Jan. 2021</p>	<p>Added brushwood - 01 Feb. 2021</p>

	
<p>Sludge dumped into the drain Lel oya BP premises - 15 March 2021</p>	<p>Removed sludge from drain - 23 March 2021</p>
	
<p>Unsatisfied sludge dumping in Lel oya - 17 March 2021</p>	<p>Prepared confined location to remove sludge - 23 March 2021</p>
	
<p>Uncleaned water sent directly to stream - 27 April 2021</p>	<p>Water line connected to sedimentation tank - 29 April 2021</p>

	
<p>Waste disposed improper way-section d -28 April 2021</p>	<p>Removed and cleaned the location - 29 April 2021</p>
	
<p>Not provided toilet facilities for open canal area - 08 May 2021</p>	<p>Provided toilet facilities for open canal area - 14 May 2021</p>
	
<p>Cement dust emitting from BP silos at Lel oya - 02 June 2021</p>	<p>Action taken to stop dust generating</p>

Figure 3-2: Photographic Evidence in UECP-ICB-2B Area during the reporting period

4 CONSULTATIONS, MEETING CARRIED OUT UNDER UECP DURING THE REPORTING PERIOD

45. **Table 4-1** summarizes the construction-based activities and joint visits involved by the Employer and the PMDSC with the Contractor and other key stakeholder agencies during the monitoring period.

Table 4-1: Construction based events carried out during the monitoring period

Date	Activity	Location
2021.01.12	Monthly joint site inspection carried out with SEO-PIU, ES-PMDSC and site HSE officers	Lel Oya
2021.01.19	Field visit to road section -d to observe the land issue on bi-pass road for culvert construction	Poththatawela
2021.01.26	Field visit to Beligoda damaged forest area attending with FD and PIU and PMDSC officers	Beligoda
2021.02.15	Joint site inspection with PD-PIU and PMDSC and Contractor staff	Lel Oya Batching plant
2021.02.16	Practised measuring of environmental quality monitoring attending with PMDSC and Contractor	Lel Oya
2021.02.23	Conducted PCR test by MOH office Laggala	RE office-KMTC
2021.03.04	Field visit for tree remuneration work PIU, PMDSC and Contractor	KMTC Section -d
2021.03.08	Field visit for land donation works for construction attending with PIU, PMDSC and Contractor officers	KMTC Section -d
2021.03.16	Field visit for tree remuneration works attending with PIU, PMDSC and	Rambukoluwa
2021.03.17	Field visit to UEC ICB-1 attending with DWC, PIU and PMDSC	UEC ICB-1
2021.03.24	Field visit to section -d for tree remuneration work attending with FD, PMDSC and PIU	KMTC section-d
2021.04.01	Field visit to Elahera with attending FD, DWC, PIU, PMDSC officers	UEC-ICB-1
2021.04.07	Conducted PCR test for PIU, PMDSC officers attending with MOH officers	RE office KMTC
2021.04.08	Field visit to Elahera and KMTC with attending ADB mission team, PUM, PIU, PMDSC officers	UEC-ICB-1 and KMTC
2021.05.07	Field visit to section -d to observe the borrow pit attending Archaeological officers	KMTC section-d
2021.05.11	Conducted disinfection programme in UEC ICB-1 office due to recording Covid-19 infected officer	UEC-ICB-1
2021.05.19	Property condition survey was conducted by TC-GSMB	KMTC section-d
2021-06-04	Field visit to section -d to observe the ROW of the road attending PRDA officers	KMTC section-d

46. There are other meetings carried out as awareness sessions, informal communications under GRC mechanism and the **Table 4-2** summarized such meetings conducted related to KMTC.

Table 4-2: Summary of the other meetings, awareness sessions conducted under KMTTC

Type of event	Purpose	No. of participants	Location (GN-DS)	Date	Resource persons	Remarks
Awareness	Aware villagers on improvement of road section -d and land donation for it	22	Ilukkumbura and Kahagala	19 Jun. 2021	ERE-PIU, CO-PIU, ARE-PMDSC	See Annex 4
Awareness	Aware villagers on improvement of road section -d and land donation for it	17	Puwakpitiya/Poththatawela	19 Jun. 2021	ERE-PIU, CO-PIU, ARE-PMDSC	See Annex 4
Awareness	Aware school children on	74	Puwakpitiya	22 March 2021	PD, CS, CO-PIU	See Annex 4

5 PROPOSED ACTIVITIES FOR NEXT REPORTING PERIOD (JULY TO DECEMBER 2021)

47. The key activities to be carried out by the Employer and PMDSC jointly during the next reporting period are summarized in **Table 5-1**.

Table 5-1: Key activities planned for next reporting period

Construction related
<ul style="list-style-type: none">• Ecological Monitoring along UECP-ICB-2B tunnel area• Habitat restoration under UECP-ICB-2B
Baseline Environmental Quality Monitoring (Air/ Noise/ Vibration) in UECP-ICB-2A
Additional Surveys
<ul style="list-style-type: none">• Preparing addendum / supplementary EIA for the scope changes in UECP-ICB-2A, NCPCP-3, NCPCP-5 packages

Annex 1: List of Trees (12 Numbers) identified in 2020 for felling under Section “d” rehabilitation



ඉහළ ඇළහැර ඇළ ව්‍යාපෘතිය
மேல் எலஹேர கால்வாய் திட்டம்
Upper Elahera Canal Project
(UECP - ICB 1 & 2B)



මහවැලි, කෘෂිකර්ම, වාරිමාර්ග සහ ග්‍රාම සංවර්ධන අමාත්‍යාංශය
மகாவேலி, வேளாண்மை, நீர்ப்பாசனம் மற்றும் ஊரக வளர்ச்சி அமைச்சகம்
Ministry of Mahaweli, Agriculture, Irrigation & Rural Development

මහවැලි ජල සුරක්ෂිතතා ආයෝජන වැඩසටහන
மகாவேலி நீர்ப் பாதுகாப்புக்கான முதலீட்டுத் திட்டம்
Mahaweli Water Security Investment Program

Project Office, New Road, Guruwela, Laggala

திட்ட அலுவலகம், புதிய நோட்ட, குருவேலு, லக்கல

ව්‍යාපෘති කාර්යාලය, අලුත් පාර, ගුරුවෙල, ලග්ගල

මගේ අංකය }
எனது இல } UECP/PD/ENV/16

ඔබේ අංකය }
உமது இல }

දිනය }
திகதி } 2020.08.11

ප්‍රාදේශීය ලේකම්,
ප්‍රාදේශීය ලේකම් කාර්යාලය,
ලග්ගල.

ඉලක්කුහුර - පොත්තටුවෙල මාර්ගය අළුත්වැඩියා කිරීම.

මහවැලි ජල සුරක්ෂිතතා ආයෝජන වැඩසටහන යටතේ අළුත්වැඩියා කිරීමට යෝජිත ඉහත මාර්ගයේ පළල් කිරීමේ කටයුතු වලට අදාලව ගස් 12 ක් පමණ ඉවත් කිරීමට අවශ්‍යව ඇත. අදාල ග්‍රාමසේවා වසම් වලට අනුකූලව එම ගස් වල අවුණා ඇති ලේඛනයට අනුව සලකුණු යොදා ඇත.

මෙම මාර්ග සංවර්ධන කටයුත්ත ඉතාම කඩිනමින් ආරම්භ කිරීමට සැලසුම් කර ඇති අතර අදාල ගස් ඉවත් කිරීමේ කටයුතු ද කඩිනමින් සිදු කළ යුතුව ඇත.

එම අවශ්‍යතාවය සලකා බලා මේ සමග අවුණා ඇති ගස් ලැයිස්තුවේ සඳහන් ගස් ඉවත් කිරීමට අදාල කටයුතු නොපමාව සලසා දෙන මෙන් කාරුණිකව ඉල්ලා සිටිමි.

ඉහත කටයුතු පිළිබඳව ඔබ ලබා දෙන සහයෝගය ඉතා අගය කරමි.

ඉංජ. සී.බී. චිජයරත්න,
ව්‍යාපෘති අධ්‍යක්ෂ (ICB-1 & ICB-2B),
මහවැලි ජල සුරක්ෂිතතා ආයෝජන වැඩසටහන,
මහවැලි, කෘෂිකර්ම, වාරිමාර්ග සහ ග්‍රාමීය සංවර්ධන අමාත්‍යාංශය.

පිටපත:

- වැඩසටහන් අධ්‍යක්ෂ (MWSIP) - දැ.ග.ස
- නේවාසික ඉංජිනේරු (PMDSC) - දැ.ග.ස
- ග්‍රාම නිලධාරී (කහගල/ පුවත්පිටිය/පොත්තටුවෙල) - අ.ක.ස
- ව්‍යාපෘති කළමනාකරු (Sinohydro Corporation Ltd.) - දැ.ග.ස.

කළ ලියා 2020.08.17 දින

(Handwritten signature and date 20/08/20)

ච.පී.ඊ.පී.කේ. බණ්ඩාර
ප්‍රධාන කළමනාකරණ සහකාර
ප්‍රාදේශීය ලේකම් වෙනුවට
ප්‍රාදේශීය ලේකම් කාර්යාලය
ලග්ගල - පලමුවිල.



ඉහළ ආළිහැර ආළි ව්‍යාපෘතිය
මෙග් ආලිහැර කාල්වාය් තிட்டම
Upper Elahera Canal Project
(UECP - ICB 1 & 2B)



මහවැලි, කෘෂිකර්ම, වාරිමාර්ග සහ ග්‍රාමීය සංවර්ධන අමාත්‍යාංශය
மகாவேலி, வேளாண்மை, நீர்ப்பாசனம் மற்றும் ஊரக வளர்ச்சி அமைச்சகம்
Ministry of Mahaweli, Agriculture, Irrigation & Rural Development

මහවැලි ජල සුරක්ෂිතතා ආයෝජන වැඩසටහන
மகாவேலி நீர்ப்பாதுகாப்புக்கான முதலீட்டுத் திட்டம்
Mahaweli Water Security Investment Program

Project Office, New Road, Guruwela, Laggala

திட்ட அலுவலகம், புதிய நோட், குருவேலி, லக்கல

ව්‍යාපෘති කාර්යාලය, අලුත් පාර, දරුවෙල, ලක්කල

මගේ අංකය }
எனது இல } UECP /PD/ENV/162

ඔබේ අංකය }
உமது இல }

දිනය }
திகதி } 2020.08.11

ප්‍රාදේශීය ලේකම්,
ප්‍රාදේශීය ලේකම් කාර්යාලය,
ලක්කල.

ඉදුක්කුමුර - පොත්තටුවෙල මාර්ගය අළුත්වැඩියා කිරීම .

මහවැලි ජල සුරක්ෂිතතා ආයෝජන වැඩසටහන යටතේ අළුත්වැඩියා කිරීමට යෝජිත ඉහත මාර්ගයේ පළල් කිරීමේ කටයුතු වලට අදාලව ගස් 12 ක් පමණ ඉවත් කිරීමට අවශ්‍යව ඇත. අදාල ග්‍රාමසේවා වසම් වලට අනුකූලව එම ගස් වල අමුණා ඇති ලේඛනයට අනුව සලකුණු යොදා ඇත.

මෙම මාර්ග සංවර්ධන කටයුත්ත ඉතාම කඩිනමින් ආරම්භ කිරීමට සැලසුම් කර ඇති අතර අදාල ගස් ඉවත් කිරීමේ කටයුතු ද කඩිනමින් සිදු කළ යුතුව ඇත.

එම අවශ්‍යතාවය සලකා බලා මේ සමග අමුණා ඇති ගස් ලැයිස්තුවේ සඳහන් ගස් ඉවත් කිරීමට අදාල කටයුතු නොපමාව සලසා දෙන මෙන් කාරුණිකව ඉල්ලා සිටිමි.

ඉහත කටයුතු පිළිබඳව ඔබ ලබා දෙන සහයෝගය ඉතා අගය කරමි.

 o/c

ඉංජි. ඩී.බී. විජයරත්න,
ව්‍යාපෘති අධ්‍යක්ෂ (ICB-1 & ICB-2B),
මහවැලි ජල සුරක්ෂිතතා ආයෝජන වැඩසටහන,
මහවැලි, කෘෂිකර්ම, වාරිමාර්ග සහ ග්‍රාමීය සංවර්ධන අමාත්‍යාංශය.

පිටපත:

- | | | |
|---|---|---------|
| ➤ වැඩසටහන් අධ්‍යක්ෂ (MWSIP) | - | දැ.ග.ස |
| ➤ තේවාසික ඉංජිනේරු (PMDSC) | - | දැ.ග.ස |
| ➤ ග්‍රාමී නිලධාරී (කහගල/ ප්‍රවක්ෂිටිය/පොත්තටුවෙල) | - | අ.ක.ස |
| ➤ ව්‍යාපෘති කළමනාකරු (Simhydro Corporation Ltd.) | - | දැ.ග.ස. |

ඇමුණුම 01

ගස් ලැයිස්තුව - කහගල වසම

අනු අංකය	දුර (කි.මී)	දිශාව	මධ්‍ය රේඛාව සමග පරතරය	ගස් නම	වට ප්‍රමාණය	වෙනත් කරුණු	ගස් සලකුණ
01	2+888	RHS	3.7	බලිඳ	1200	අස්ථාවර	K-1

ඇමුණුම 02

ගස් ලැයිස්තුව - පුවත්පිටිය වසම

අනු අංකය	දුර (කි.මී)	දිශාව	මධ්‍ය රේඛාව සමග පරතරය	ගස් නම	වට ප්‍රමාණය	වෙනත් කරුණු	ගස් සලකුණ
01	4+992	LHS	2.8	කර කොළ	1600	-	P-1
02	5+737	RHS	2.6	හැළඹි	2200	-	P-2
03	5+892	LHS	3.6	කොස්	4500	අධික වක්‍රිකාවය	P-3
04	6+012	LHS	2.5	බුළු	3000	-	P-4
05	7+298	LHS	2.2	නූග	2500	-	P-5
06	7+470	LHS	2.6	මිල්ල	1800	යෝජිත පැති බැම්ම	P-6
07	7+479	LHS	4	නිකුල	1000	-	P-7
08	7+480	LHS	4	හුලංචික්	1500	-	P-8
09	7+512	LHS	3	අඹ	1200	-	P-9

අමුණුම 03

ගස් ලැයිස්තුව - පොත්තටවෙල වසම

අනු අංකය	දුර (කි.මී)	දිශාව	මධ්‍ය රේඛාව සමග පරතරය	ගසේ නම	වට ප්‍රමාණය	වෙනත් කරුණු	ගසේ සලකුණ
01	9+915	LHS	2.3	කැන්ද	1500	-	PT-1
02	10+054	RHS	1.7	දුණුමිදැල්ල	2000	-	PT-2



ප්‍රාදේශීය මහ ලේකම් කාර්යාලය - ලග්ගල
 பிரதேச செயலகம் - லக் கல்
 DIVISIONAL SECRETARIAT - LAGGALA

වෙබ් අඩවිය
 இலங்கைப் புள்ளி } www.ds.gov.lk/ds/laggala-pulliguma
 Web Site

දුරකථන අංකය
 தொலைபேசி } 066-2275200
 e-mail } motha.thiruvalluvar@gmail.com

දුරකථන / தொலைபேசி / Telephone
 066-2275200
 066-2275038
 066-2275039

මගේ අංකය
 எனது இல } 11/3/2/1/1
 My No.

ඔබේ අංකය
 உமது இல }
 Your No.



2020.09. 29

ජ්‍යෙෂ්ඨ ප්‍රාදේශීය ඉංජිනේරු,
 රාජ්‍ය දැව සංස්ථාව,
 මහනුවර.

Handwritten signature

ඉදුක්කුඹුර - පොත්තටුවේල මාර්ගය අළුත්වැඩියා කිරීම හා සම්බන්ධවයි.

මහවැලි ජල සුරක්ෂිතතා ආයෝජන වැඩසටහන යටතේ අළුත්වැඩියා කිරීමට නියමිත යෝජිත ඉහත මාර්ගය පළල් කිරීමේ අවශ්‍යතාවය හේතුවෙන් ගස් කිහිපයක් ඉවත් කිරීම සම්බන්ධයෙන් මහවැලි ජල සුරක්ෂිතතා ආයෝජන වැඩසටහන් ව්‍යාපෘති අධ්‍යක්ෂක විසින් 2020.08.11 දිනැති ව UEC/PD/ENV/16 සමාංක සහිත ලිපිය මගින් මා වෙත ඉල්ලීම කර ඇත.

02. ඒ අනුව එකී ලිපිය මගින් ඉදිරිපත් කරන ලද ගස් සම්බන්ධව ලබා ගන්නා ලද නිර්දේශ වලින් පසුව ඉවත් කළ යුතු ගස් වර්ග මේ සමඟ අමුණා ඇති අතර, එකී සංවර්ධන ව්‍යාපෘතිය කඩිනමින් කළ යුතු බැවින් අදාළ ගස් ක්ෂේත්‍රයෙන් ඉවත් කිරීමට අවශ්‍ය කටයුතු සිදු කර දෙන ලෙස කාරුණිකව දන්වා සිටිමි.

ප්‍රාදේශීය ලේකම්,
 ලග්ගල

Mr. Rajeev - 150
f.n.a.m

10/10/2020

පිටපත්-

- 01. ව්‍යාපෘති අධ්‍යක්ෂක, මහවැලි ජල සුරක්ෂිතතා ආයෝජන වැඩසටහන, ඉහළ ඇළහැර ඇළ ව්‍යාපෘතිය. - කා.ද.පි.
- 02. ග්‍රාම නිලධාරී, ග්‍රාම නිලධාරී කාර්යාලය, පුවත්පිටිය. - කා.ද.පි.
- 03. ප්‍රාදේශීය ලේකම්, ග්‍රාම නිලධාරී කාර්යාලය, පොත්තටුවේල. - කා.ද.පි.
- 04. ග්‍රාම නිලධාරී, ග්‍රාම නිලධාරී කාර්යාලය, කහගල. - කා.ද.පි.

එස්. විජේසංකාර්
ප්‍රාදේශීය ලේකම්
ලග්ගල.



වන සංරක්ෂණ දෙපාර්තමේන්තුව

FOREST DEPARTMENT

வன பாதுகாப்பு துணைக்களம்

අඩවි වන කාර්යාලය - ලග්ගල

RANGE FOREST OFFICE - LAGGALA

வட்டார வள காரியாலையம் லக் கலை



දුරකථන தொ.பே Tel :	066 - 2275006	ෆැක්ස් பெக்ஸ் Fax :	066 - 2275006	ඊමේල් ஈ.மேல் E-mail :	rfolaggala@gmail.com
මගේ අංක : எனது இல. My Ref :	LAGH/511	ඔබේ අංකය : உமது இல. Your Ref :	1102/111	දිනය : திகதி Date :	2020.09.28

ප්‍රාදේශීය ලේකම්,
ප්‍රාදේශීය මහ ලේකම් කාර්යාලය,
ලග්ගල.

Handwritten signature/initials

මුද්‍රාත්ති - පොත්තුවෙල මාර්ගය ප්‍රේෂ්වාදය කිරීම.

ලක්ෂ්‍ය කරුණ යටතේ බිම් විසින් බිම් විසින් මා වෙත යොමු කර ඇති ලිපියට අනුව අදාළ මාර්ගය සඳහා ඉවත් කිරීමට යෝජිත ගස් මා විසින් පුද්ගලිකව පරීක්ෂා කරන ලදී. ඒ අනුව මෙම ගස් ඉවත් කිරීමෙන් වන සංරක්ෂණ ක්‍රියාවලියට සැලකිය යුතු බලපෑමක් සිදු නොවන බව නිරීක්ෂණය කර පහත පරිදි එම ගස් ඉවත් කිරීම නිර්දේශ කරමි.

ගස් අංකය	වර්ගය	මුළු වට (m)	උළු උස (m)	නිරීක්ෂණ
K - 1	කැටකැල	1.40	12	මාර්ග රක්ෂිතයේ පිහිටා ඇත. ගස අනාරක්ෂිත තත්ත්වයේ පවතී.
P - 1	කර කොළ	1.60	10	මාර්ග රක්ෂිතයේ පිහිටා ඇත. ගස අනාරක්ෂිත තත්ත්වයේ පවතී.
P - 2	යකඩ මරන්	1.60	09	මාර්ග රක්ෂිතයේ පිහිටා ඇත.
P - 3	කොත්	3.90	12	මාර්ග රක්ෂිතයේ පිහිටා ඇත.
P - 4	වුළු	3.50	08	මාර්ග රක්ෂිතයේ පිහිටා ඇත.
P - 5	හුග	2.50	02	මාර්ග රක්ෂිතයේ පිහිටා ඇත.
P - 6	කහ මිල්ල	2.30	12	මාර්ග රක්ෂිතයේ පිහිටා ඇත.
P - 7	නිකුල	1.30	06	මාර්ග රක්ෂිතයේ පිහිටා ඇත.
P - 8	හුලංහිත්	2.10	18	මාර්ග රක්ෂිතයේ පිහිටා ඇත.
P - 9	අඹ	1.35	03	මාර්ග රක්ෂිතයේ පිහිටා ඇත.
PT - 1	කැන්ද	1.20	10	මාර්ග රක්ෂිතයේ පිහිටා ඇත.
PT - 2	දිණ්ණිල්ල	1.80	18	මාර්ග රක්ෂිතයේ පිහිටා ඇත.

පිටපත.

1. විවිධ/මානලේ - කා.දි.පි.

Handwritten: Mr. Rajeev - 200 M. proceed

පි.ජී.එන්.කියේරා
අඩවි වන නිලධාරී,
ලග්ගල.

ම.ව.වන. සංරක්ෂණ
අඩවි වන නිලධාරී
ලග්ගල.

Handwritten: One tree to be removed - කා.දි.පි.

8PD
 Fm
 මෙම ලේඛන:- රාජ්‍ය/සාමාන්‍ය/මැද/විදි-මෙහි/
 රාජ්‍ය දූත සංස්ථාව
 මැද
 2020.10.07

ඉන්‍යාසරි දිනය,
 මහාලේ මේ ප්‍රකාශනයේ දිනෙහි ඇවෙන්න,
 මුළු ලේඛන දූත ඉන්‍යාසරි,



ප්‍රජාලය-මානවත්වම නිසි දුරකථන කථන
සටහන.

මුත් ඇවෙන්න ම සටහන යුක්තිය, මානවත්වම
 ම සාමාන්‍ය වස්තුවේ දින නිසි රටේ ඇවෙන්න මානවත්වම
හැට 10 මානවත්වම දූත දුරකථන කථන සටහන
 සටහන. රාජ්‍ය දූත සංස්ථාව නිසි වස්තුවේ මානවත්වම
 මානවත්වම දුරකථන කථන නිසි වස්තුවේ මානවත්වම
 මානවත්වම දුරකථන කථන.

සී.සේ. අනේෂ්වරයා
 සහකාර ප්‍රාදේශීය කළමනාකර
 රාජ්‍ය දූත සංස්ථාව
 මානව.

සටහන : ප්‍රාදේශීය කළමනාකර - මානවත්වම - දුරකථන.
 ප්‍රාදේශීය මානවත්වම ප්‍රාදේශීය මානවත්වම මානවත්වම, දුරකථන.

Mr. Sajeev - 800

M arrange with discuss PMS

12/10/2020

20.10.13

සහකාර ප්‍රාදේශීය කළමනාකාර,
කළුගහ.



ඉලක්කුමුර - පොත්තටුවෙල මාර්ගය අවිත්වැඩියා කිරීම හා සම්බන්ධවයි - 1172/මක්/2020

උක්ත මැයෙන් යුතුව මා අමතන ලද, ලග්ගල පල්ලේගම ප්‍රාදේශීය ලේකම්ගේ අංක:11/3/2/1/1 හා 2020.09.29 දිනැති ලිපිය හා බැඳේ. එම ලිපියේ ඡායා පිටපතක් මේ සමග අමුණා එවමි.

එම ලිපියෙන් පොත්තටුවෙල ග්‍රාම නිලධාරී වසමේ ඉහත මාර්ගය පළල් කිරීම සඳහා බාධා වී ඇති කන්ද, ගස ඉවත් කරන ලෙස දන්වා ඇත. එබැවින් අදාල වසමේ ග්‍රාම නිලධාරීගේ සහාය ඇතිව නිවැරදිව හඳුනාගෙන වහාම එම දැව සංස්ථා භාරයට ගැනීමට කටයුතු කරන්න.

~~පොත්තටුවෙල~~ ප්‍රාදේශීය කළමනාකාර, /කු
මහනුවර.

Mr. Sajjens - අප

M. Cordinele

Mo apn

21/10/2020

පිටපත්:

01. ප්‍රාදේශීය ලේකම්, - දැ.ගැ.පි.
ලග්ගල පල්ලේගම.
02. ව්‍යාපෘති අධ්‍යක්ෂක, - දැ.ගැ.පි.
මහවැලි ජල සුරක්ෂිතතා ආයෝජන වැඩසටහන
ඉහළ ඇළහැර ව්‍යාපෘතිය
ලග්ගල.

03. නියෝජ්‍ය ප්‍රාදේශීය කළමනාකාර, - දැ.ගැ.පි.
මාතලේ.

04. ග්‍රාම නිලධාරී, - ගස නිවැරදිව හඳුනා ගැනීම සඳහා රාජ්‍ය
පොත්තටුවෙල. දැව සංස්ථා නිලධාරීන්ට අවශ්‍ය සහයෝගය ලබා දීම
පිණිස දැ.ගැ.පි.

05. ස.ප්‍රා.ක - කළුගහ. මගින් - ලිපිය ලද වහාම දැව පරීක්ෂණ වාර්තාව පිළියෙල
වැඩබිම් නිලධාරී කර දින 03 ක් තුල හෝ ඊට අඩු කාල සීමාවක් තුල
මා වෙත ඉදිරිපත් කිරීමට හැකි වන පරිදි ස.ප්‍රා.ක
වෙත ලබා දීමට හා දැ.ගැ.පි.

/නෙ.

ග් අංකය:රාදැස/මහ/13/ලග්ගල පල්ලේගම/2020
 3 දැව සංස්ථාව,
 මහර.
 10.13



සහකාර ප්‍රාදේශීය කළමනාකාර,
 කළුගහ.

ඉලක්කුමුරු - පොත්තටුවෙල මාර්ගය අවිත්තර්ගය කිරීම හා සම්බන්ධවයි - 1173/මක්/2020

උක්ත මැයෙන් යුතුව මා අමතන ලද, ලග්ගල පල්ලේගම ප්‍රාදේශීය ලේකම්ගේ අංක:11/3/2/1/1 හා 2020.09.29 දිනැති ලිපිය හා බැඳේ. එම ලිපියේ ජානා පිටපතක් මේ සමග අමුණා එවමි.

එම ලිපියෙන් කහගල ග්‍රාම නිලධාරී වසමේ ඉහත මාර්ගය පළල් කිරීම සඳහා බාධා වී ඇති ඔළිද, ගස ඉවත් කරන ලෙස දන්වා ඇත. එබැවින් අදාල වසමේ ග්‍රාම නිලධාරීගේ සහාය ඇතිව නිවැරදිව හඳුනාගෙන වහාම එම දැව සංස්ථා භාරයට ගැනීමට කටයුතු කරන්න.

~~පොත්තටුවෙල~~ ප්‍රාදේශීය කළමනාකාර,
 මහනුවර.

Mr. Rajkumar - 860

M. Cordina U.

Handwritten signature
 21/10/2020

පිටපත්:

01. ප්‍රාදේශීය ලේකම්, ලග්ගල පල්ලේගම. - දැ.ගැ.පි.
02. ව්‍යාපෘති අධ්‍යක්ෂක, මහවැලි ජල සුරක්ෂිතතා ආයෝජන වැඩසටහන ඉහළ ඇළහැර ව්‍යාපෘතිය ලග්ගල. - දැ.ගැ.පි.

03. නියෝජ්‍ය ප්‍රාදේශීය කළමනාකාර, මාතලේ. - දැ.ගැ.පි.

04. ග්‍රාම නිලධාරී, කහගල. - ගස නිවැරදිව හඳුනා ගැනීම සඳහා රාජ්‍ය දැව සංස්ථා නිලධාරීන්ට අවශ්‍ය සහයෝගය ලබා දීම පිණිස දැ.ගැ.පි.

05. ස.ප්‍රා.ක - කළුගහ. මගින් වැඩබිම් නිලධාරී - ලිපිය ලද වහාම දැව පරීක්ෂණ වාර්තාව පිළියෙල කර දින 03 ක් තුල හෝ ඊට අඩු කාල සීමාවක් තුල මා වෙත ඉදිරිපත් කිරීමට හැකි වන පරිදි ස.ප්‍රා.ක වෙත ලබා දීමට හා දැ.ගැ.පි.

අංකය:රාදැස/මහ/13/ලගල පල්ලේගම/2020
දැව සංස්ථාව,
වර.
10.13



සහකාර ප්‍රාදේශීය කළමනාකාර,
කළුගහ.

ඉලක්කුමුර - පොත්තටුවෙල මාර්ගය අවිත්වකිරීම සහ සම්බන්ධවයි - 1171/මක්/2020

උක්ත මැයෙන් යුතුව මා අමතන ලද, ලගල පල්ලේගම ප්‍රාදේශීය ලේකම්ගේ අංක:11/3/2/1/1 හා 2020.09.29 දිනැති ලිපිය හා බැඳේ. එම ලිපියේ ආයා පිටපතක් මේ සමග අමුණා එවමි.

එම ලිපියෙන් පුවත්පිටිය ග්‍රාම නිලධාරී වසමේ ඉහත මාර්ගය පළල් කිරීම සඳහා බාධා වී ඇති ගස් කිහිපයක් ඉවත් කරන ලෙස දන්වා ඇත. එබැවින් අදාළ වසමේ ග්‍රාම නිලධාරීගේ සහාය ඇතිව නිවැරදිව හඳුනාගෙන වහාම එම දැව සංස්ථා භාරයට ගැනීමට කටයුතු කරන්න.

ප්‍රාදේශීය කළමනාකාර, /21
මහනුවර.

Mr. Sajith - 860

M. Cordinali

21/10/2020

පිටපත්:

01. ප්‍රාදේශීය ලේකම්, - දැ.ගැ.පි.

ලගල පල්ලේගම.

02. ව්‍යාපෘති අධ්‍යක්ෂක, - දැ.ගැ.පි.

මහවැලි ජල සුරක්ෂිතතා ආයෝජන වැඩසටහන
ඉහළ ඇළකාර ව්‍යාපෘතිය
ලගල.

03. නියෝජ්‍ය ප්‍රාදේශීය කළමනාකාර, - දැ.ගැ.පි.
මාතලේ.

04. ග්‍රාම නිලධාරී, - ගස් නිවැරදිව හඳුනා ගැනීම සඳහා රාජ්‍ය
පොත්තටුවෙල. දැව සංස්ථා නිලධාරීන්ට අවශ්‍ය සහයෝගය ලබා දීම
පිණිස දැ.ගැ.පි.

05. ස.ප්‍රා.ක - කළුගහ. මගින් - ලිපිය ලද වහාම දැව පරීක්ෂණ වාර්තාව පිළියෙල
වැඩබිම් නිලධාරී කර දින 03 ක් තුල හෝ ඊට අඩු කාල සීමාවක් තුල
මා වෙත ඉදිරිපත් කිරීමට හැකි වන පරිදි ස.ප්‍රා.ක
වෙත ලබා දීමට හා දැ.ගැ.පි.

/නෙ.



ප්‍රාදේශීය මහ ලේකම් කාර්යාලය - ලග්ගල
 பிரதேச செயலகம் - லக்கல
 DIVISIONAL SECRETARIAT - LAGGALA

දුරකථන - தொலைபேசி / Telephone
 066-2275200
 அலுவலகம் - அலுவலகம் / Office
 066-2275008
 ප්‍රාදේශීය ලේකම් - பிரதேச செயலகம் / Divisional Secretary
 066-2275008
 ලේකම් - ලේකම් / Secretary
 066-2275008
 පැස් - தொலைபேசி / Fax
 066-2275008

වෙබ් අඩවිය - இணையத் தளம் / Web Site
www.ds.gov.lk/ds/laggala-pallegama

විද්‍යුත් තැපෑල - செய்தி - செய்தி / e-mail
laggala@ds.gov.lk

මගේ අංකය - எனது இல - My No.
 11/3/2/1/1

ඔබේ අංකය - உமது இல - Your No.



දිනය - திகதி - Date
 2020.10. 2

ලොකුබණ්ඩා බස්නායක මයා,
 ගහල - පුවත්පිටිය,
 මාතලේ.

DPA
 [Signature]

ඉල්ක්කුඹුර - පොත්තටුවෙල මාර්ගය අලුත්වැඩියා කිරීම හේතුවෙන් ඉවත් වීමට නියමිත කොස් ගස හෙලීම සඳහා අවසරය ලබා දීම හා සම්බන්ධවයි.

මහවැලි ජල සුරක්ෂිතතා ආයෝජන වැඩසටහන යටතේ අළුත්වැඩියා කිරීමට නියමිත යෝජිත ඉහත මාර්ගය පළල් කිරීමේ අවශ්‍යතාවය හේතුවෙන් ඉවත් කිරීමට නියමිත විකුණුම්කර 33059 දරන ඉඩමට අයත් ගස් හෙලීම සඳහා ඔබ විසින් මා වෙත යොමු කරන ලද 2020.08.27 දිනැති ඉල්ලීම් ලිපිය හා බැඳේ.

02. ඒ අනුව අදාළ සංවර්ධන ව්‍යාපෘතිය හේතුවෙන් ඉවත් කිරීමට නියමිත වට ප්‍රමාණය මීටර 4500 ක් පමණ වන විකුණුම්කර 33059 දරන ඉඩමෙහි පිහිටි කොස් ගස පමණක් හෙලීම සඳහා මාගේ අවසරය ලබා දෙමි.

03. ඔබ විසින් හෙලීම සඳහා ඉල්ලීම් කරන ලද බුළු ගස මාර්ග රක්ෂිතයේ පිහිටා ඇති බැවින්, එම ගස හෙලීමට අවසර ලබා දිය නොහැකි බව ද කාරුණිකව දන්වා සිටිමි.

Mr. Jayaraj - [Signature]
 F.N.A.M.
 [Signature]
 7/10/2020

ප්‍රාදේශීය ලෙකම්,
 ලග්ගල.

පිටපත -

- 01. ව්‍යාපෘති අධ්‍යක්ෂක, මහවැලි ජල සුරක්ෂිතතා ආයෝජන වැඩසටහන, ඉහළ ඇළහැර ඇළ ව්‍යාපෘතිය. - කා.ද.පි.
- 02. ඉංජිනේරු, ඉංජිනේරු කාර්යාලය, පුවත්පිටිය. - කා.ද.පි.

එස්. විජයකුමාර්
 ප්‍රාදේශීය ලේකම්
 ලග්ගල.

නායකාර ප්‍රාදේශීය ලේකම්
 Asst. Divisional Secretary
 066-2275008

ගණකාධිකාරී
 Accountant
 066-2275008

සංඝර්ෂ අධ්‍යක්ෂ (ඉ.ප.වි.ප.)
 Asst. Director (Planning)
 066-2275008

ශ්‍රී ලංකා මහ බැංකු පළාත් මූලාශ්‍ර
 Head Quarter Samudra Manager
 066-2275014

Annex 2: List of Trees (110 Numbers) identified in 2021 for felling under Section “d” rehabilitation



මගේ අංකය :- LAG/OTHER/4
අඩවි වන කාර්යාලය,
ලග්ගල.
2021.04. 23

දිසා වන නිලධාරී,
දිසා වන කාර්යාලය,
මාතලේ.

ඉලක්කුමුර - පොත්තටුවෙල මාර්ගය සංවර්ධනය කිරීම.

උක්ත කරුණ යටතේ ඔබ විසින් මා වෙත යොමු කර ඇති ඔබගේ අංක M10/5/4/3/MWSIP/KMTC සහ 2021.03.25 දින දරණ ලිපිය හා ඔබ හා මටද පිටපත් සහිතව ලග්ගල ප්‍රාදේශීය ලේකම් අමතන ලද KMTCP & MLBCRP ව්‍යාපෘතියේ ව්‍යාපෘති අධ්‍යක්ෂකගේ අංක UEC/PD/KMTC/Misc/2021/032 සහ 2021.03.18 දින දරණ ලිපිය හා සබැඳේ.

2. එම ලිපි වලට අනුව මාගේ උපදෙස් පරිදි ඉල්ක්කුමුර (වැ.බ.) බිට්ටු වන නිලධාරී H.M.U.T.R.P.ගේරත් මහතා විසින් උක්ත ව්‍යාපෘතියේ ජේ.පරිසර නිලධාරී S.S.කොස්ගොල්ල මහතා සමග ඉල්ලීමට අදාල ගස් පරීක්ෂා කර මා වෙත වාර්තා කර ඇත. ඒ අනුව ඉවත් කිරීමට යෝජිත ගස් පිළිබඳ නිරීක්ෂණ පහත පරිදි වේ.

I. ගස් සලකුණු කිරීමේදී සහ මිනුම් කිරීමේදී සම්මත ක්‍රමය අනුගමනය කර නොමැති බැවින් පසු මට්ටමට පහළින් බෙදීමට ළක්වූ ගස් එකක් ලෙස සලකුණු කර ඇත. එබැවින් සලකුණු නොවී මහහැරුණු ගස් සලකුණු කර අංක කිරීමක් සිදු කර ඇත.

II. හෙලීමට යෝජිත ගස් ලැයිස්තුව.

ගස් අංකය	වර්ගය	පසු මට්ටමේ වට (cm)	දළ උස (m)	GPS පාඨාංකය		වෙනත්
				E	N	
1	හුරි මාර	125	04	199650	260976	පුද්ගලික ඉඩමක පිහිටා ඇත.
2	හුරි මාර	130	10	199675	261078	දම්මන්තොටරොද රක්ෂිතයට අයත් වේ.
3	ලුණුමිදෙල්ල	130	15	199703	261140	පුද්ගලික ඉඩමක පිහිටා ඇත.
4	බුළු	310	12	199686	261140	පුද්ගලික ඉඩමක පිහිටා ඇත.
5	හුරි මාර	120	05	199554	261221	පුද්ගලික ඉඩමක පිහිටා ඇත.
6	හුරි මාර	210	12	199553	261234	පුද්ගලික ඉඩමක පිහිටා ඇත.

14380-2

7	කටකලේ	115	08	199538	261298	පුද්ගලික ඉඩමක පිහිටා ඇත.
8	කැන්ද	80	08	199480	261244	
9	බත් මාර	80	20	199478	261276	
10	කටකලේ	90	12	199501	261301	නකල්ස් සංරක්ෂිතය තුළ/ මායිමේ පිහිටා ඇත.
11	බදුල්ල	70	07	199504	261306	
12	මී	60	04	199512	261317	
13	හුරි මාර	120	15	199512	261317	
14	බත් මාර	210	12	199515	261323	
15	දඹුණු	75	08	199523	261322	
16	පිහිඹියා	85	08	199504	261332	
17	මිල්ල	250	12	199499	261321	
18	මොර	75	08	199485	261303	
19	බදුල්ල	60	08	199472	261305	
20	බුරුන්ද	70	12	199470	261301	
21	කැන්ද	80	10	199472	261299	
22	නිකදවුල	90	12	199466	261300	
23	රත්කරවු	80	08	199459	261295	
24	බුරුන්ද	78	12	199453	261290	
25	වෙලන්	45	08	199451	261289	
26	කුඩු දවුල	60	08	199448	261287	
27	වෙලන්	65	08	199447	261280	
28	නිකදවුල	60	08	199444	261280	
29	කටකලේ	85	10	199439	261274	
30	නිකදවුල	70	09	199436	261269	
31	නිකදවුල	70	07	199435	261261	
32	කැන්ද	100	09	199435	261261	
33	කුඩු නෙලුබැ	70	05	199418	261239	
34	බත් මාර	205	20	199381	261187	
35	මිල්ල	60	10	199373	261184	
36	මී	70	10	199373	261184	
37	පිහිඹියා	195	11	199373	261128	
38	මිල්ල	220	15	199372	261128	
39	මතුල්	95	05	199372	261128	

40	හුරි මාර	95	08	199293	261255	
41	කටකලේ	90	08	199290	261274	
42	ගම්මාලු	100	05	199287	261278	
43	වෙලන්	55	12	199275	261727	
44	පී	60	10	199302	261789	
45	නිකදවුල	70	10	199302	261789	
46	අට්ටික්කා	80	05	199323	261941	
47	මුලු	70	07	199304	262033	
48	කැටකැල	45	05	199297	261129	
49	කටකලේ	80	12	199300	261134	
50	මිල්ල	230	11	199294	261148	
51	දළුත	70	07	198651	262319	
52	ඉහිනි	80	06	198290	263029	
53	හුරි මාර	300	15	197850	263491	
54	මිල්ල	75	10	197497	263481	දම්මන්තොටරොද රක්ෂිතයට අයත් වේ.
55	වෙලන්	120	09	197136	263548	පුද්ගලික ඉඩමක පිහිටා ඇත.
56	වෙලන්	70	10	197027	263692	පුද්ගලික ඉඩමක පිහිටා ඇත.
57	නිකදවුල	100	08	197023	263696	පුද්ගලික ඉඩමක පිහිටා ඇත.
58	නිකදවුල	130	12	198010	263711	දම්මන්තොටරොද රක්ෂිතයට අයත් වේ.
59	මුලු	330	09	197183	264653	පුද්ගලික ඉඩමක පිහිටා ඇත.
60	ඇටඹ	110	12	197409	264717	පුද්ගලික ඉඩමක පිහිටා ඇත.
61	මුලු	220	08	197504	264737	පුද්ගලික ඉඩමක පිහිටා ඇත.
62	හුරි මාර	90	13	197559	264751	පුද්ගලික ඉඩමක පිහිටා ඇත.
63	හුරි මාර	90	12	197649	264813	පුද්ගලික ඉඩමක පිහිටා ඇත.
64	දුනුමඩල	115	10	197889	265006	ඇලගමුව රක්ෂිතයට අයත් වේ.
65	මුරුත	60	07	197885	265008	
66	හුරි මාර	90	10	197898	265019	
67	හුරි මාර	60	15	197919	265007	
68	තෙලමු	90	10	197967	265023	
69	කටකලේ	60	12	197993	265028	
70	කටකලේ	110	08	198122	265104	

95640 →

71	කෝන්	80	08	198174	265142	
72	හුරි මාර	80	07	198170	265120	
73	කුඩුනෙලුබෑ	70	08	198192	265122	
74	දුනුමඩල	45	07	198207	265124	
75	වෙලන්	75	09	198217	265129	
76	ඇටඹ	85	08	198217	265129	
77	ඇටඹ	70	08	198225	265135	
78	දඹුනු	80	07	198233	265137	
79	ඇහැටු	180	12	198246	265143	
80	අලාදු	230	15	198258	265157	
81	හුරි මාර	90	10	198375	265185	
82	කොලොන්	190	15	198443	265235	
83	මොර	95	12	198458	265240	
84	මුලු	90	06	198458	265240	
85	මොර	70	05	198492	265257	
86	කටකලෝ	80	09	198536	265294	
87	කැන්ද	110	12	198599	265321	
88	මිටිය	180	12	198606	265322	
89	මොර	70	04	198619	265333	
90	කෝන්	220	15	198619	265333	
91	පෙන්න	70	05	198631	265328	
92	කැන්ද	95	10	198639	265325	
93	පෙන්න	60	04	198638	265331	
94	මදිටිය	70	06	198638	265331	
95	කැන්ද	110	20	198652	265322	
96	මදිටිය	45	05	198652	265222	දම්මන්තොටරොද රක්ෂිතයට අයත් වේ.
97	අලාදු	95	07	198679	265389	ඇලගමුව රක්ෂිතයට අයත් වේ.
98	පෙන්න	90	05	198680	265395	
99	හල්මිල්ල	95	15	198694	265512	
100	මකුල්	150	15	198698	265589	
101	කොස්	100	08	198661	265700	
102	මිල්ල	120	10	198597	265738	

103	අලාදු	110	09	198597	265738	
104	ඕ	50	05	199512	261317	නකල්ස් සංරක්ෂිතය තුල/ මායිමේ පිහිටා ඇත.
105	නිකදවුල	80	13	199512	261317	
106	ඉභිනි	80	06	198290	263209	
107	වෙලන්	80	08	197136	263548	පුද්ගලික ඉඩමක පිහිටා ඇත.
108	ඇටඹ	65	08	198225	265135	පුද්ගලික ඉඩමක පිහිටා ඇත.
109	වෙලන්	80	10	198600	265792	පුද්ගලික ඉඩමක පිහිටා ඇත.
110	මොර	220	11	198612	265798	පුද්ගලික ඉඩමක පිහිටා ඇත.

3. ඒ අනුව ඉහත සඳහන් කළ ගස් ලැයිස්තුවට අදාල ගස් වලින් පුද්ගලික ඉඩම් වල පිහිටා ඇති බව නිරීක්ෂනය වූ ගස් පමණක් හෙළිමට නිර්දේශ කරන අතර, දම්මන්තොට රක්ෂිතයට, ඇලගමුව රක්ෂිතයට සහ නකල්ස් සංරක්ෂිතයට අයත් භූමිය තුළ පිහිටි ගස් හෙළිම සඳහා සුදුසු පරිසර ඇගයීමක් සිදු කිරීමෙන් පසුව අවසර ලබාදීම සුදුසු බවට යෝජනා කර කාරුණිකව වාර්තා කරමි.

P.G.S.TISSERA
RANGE FOREST OFFICER
LAGGALA
ව්‍යාපෘති අධ්‍යක්ෂක,
KMTCP & MLBCRP ව්‍යාපෘතිය - කො.ඇ.පි.

පි.ජී.එස්.තිසේරා,
අඩවි වන නිලධාරී,
ලග්ගල.

Annex 3: Meeting Minutes related to UECP-ICB-1with DWC

MAHAWELI WATER SECURITY AND INVESTMENT PROGRAM (MWSIP)

CONTRACT PACKAGE NO: MMDE/MWSIP/ADB/ UEC/ICB-1/3267-3268-SRI/ICB/2016/002

CONTRACT NO: CONSTRUCTION OF UPPER ELEHERA CANAL (ICB - 1)

FROM 0+100 Km TO 06+226 Km

Special meeting with the Additional Director (AD) Polonnaruwa, Department of Wildlife

Conservation on "Site maintenance_ UEC-ICB 1"

Date & Time: 17th March 2021 at 9.30 am

Venue : RE's office, UECF, Elahera

Attendance:

No.	Name	Organization	Designation	E-mail Address
1.	H.M. Senevirathne	PIU-UECP	CC	senevirathnchm@gmail.com
2.	C.H.T. Gamage	PMDSC-UECP	RE	chtgamage@gmail.com
3.	Dr Anusha Kesige	PMDSC-UECP	ES	anushakasige@yahoo.com
4.	W M K S Chandrarathne	DWC	Addl Director	keerthi_chandrarathne@yahoo.co.in
5.	C Bandaranayake	Wild life Dep:	Wild life officer	
6.	M M T U Dilshan	Wild life Dep:	Wild life officer	tarahaumayanga@yahoo.com
7.	P B Ramanayake	PMDSC-UECP	CE	Pb_ramanayake@yahoo.com
8.	R M Premawardhana	PMDSC-UECP	EMS	rmpremawardhana@yahoo.com
9.	Dulinda Polgaspitiya	PMDSC-UECP	QS	dulindanb@gmail.com
10.	Danusha Madumali	PMDSC-UECP	QM	dinumadumaliakd@gmail.com

Meeting and joint site visit with the Additional Director (AD) Polonnaruwa, Department of Wildlife Conservation (DWC) held on 17 March 2021 from 09.30 a.m. to 2.30 p.m.

No.	Topic	Action by	By date
1	<p>Overview</p> <p>a. <u>Additional Director (AD)</u> for Polonnaruwa division – Department of Wildlife Conservation (DWC) and Ranger – Elahera with his Technical Officer attended the site visit and discussion.</p> <p>b. PD-PIU mentioned that discussion after the site visit will be effective, as the work to be done will be clear to DWC once observe the present status of the site.</p> <p>c. Site visit observations and decisions are mentioned under the sections # 2 and # 3 below.</p> <p>d. PD-PIU and RE – UECF-ICB 1 explained that the main objective of calling for this meeting was to understand the stand of DWC of their involvement to engage with site security and maintain the UECF-ICB 1 site from Moragahakanda spill to Kongketiya tank during the period from CML terminated the site until the commencement of NCPCP 3 contract which will take nearly 1 year or more.</p> <p>e. RE explained that there is a Request for Quantity of Work (RFQW) is already prepared by PMDSC and submitted to PIU by January 2021, and ES PMDSC mentioned that an Environment Contingency Plan also</p>		

No.	Topic	Action by	By date
	<p>(iv) Once BoQ and RFQW is finalized with DWC, meeting to be arranged with DG-DWC, Battaramulla Head office, with the participation of AD-Polonnaruwa, and relevant parties through PMU to finalize the work and award the RFQW to DWC AD-Polonnaruwa/Matale with the approval of DG-DWC allowing full authority of implementing, financial transactions of the RFQW</p> <p>(v) The items like (i) storm water drainage maintenance, (ii) site cleaning, (iii) dewatering, (iv) maintaining existing planting areas, weeding etc will be managed by DWC with the involvement of CBO members in the area</p> <p>(vi) DWC mentioned that they can obtain the services from the skilled Task force managed under National Apprentice and Industrial Training Authority (NAITA)</p> <p>(vii) Grassland establishment and management to be attended under a separate project (may be through the Wildlife Management Plan (WMP) implementation)</p> <p>(viii) Under Invasive species removal Plan implemented by the PMU/PIU as a component of WMP, it was emphasized to remove Katu una (<i>Bambusa bambos</i>), Jam (<i>Muntingia calabura</i>) which is being spreading rapidly in the UEC-ICB 1 project area, and surrounding habitats</p> <p>(ix) Site security by DWC shall be only to protect the wildlife areas, and animals, but not to secure any equipment, machineries. DWC highlighted that fact that the DWC not in a position to take the responsibility to secure machineries/equipment related to the construction</p> <p>(x) RE-UECP-ICB 1 mentioned that Contingencies to be increased up to about 30% as given 10 % is not sufficient</p> <p>(xi) Joint monitoring to be arranged with the involvement of PIU/PMU once the CML contract is terminated</p> <p>(xii) Other Requirements emphasized at the meeting to be included in the BOQ:</p> <p>a) Establishment of security points (02 numbers) with the required temporary facilities such as electricity, water, toilet, furniture, communication / mobile phone etc). It was suggested to use modified container boxes as security huts</p> <p>b) Resource person (Clerical staff person) with a computer/ laptop to be provided to the AD-office DWC to manage documentation, communication etc.</p> <p>c) Allowance to be given to the DWC office staff (both Elahera range office and AD-Polonnaruwa/ Matale office) for site monitoring</p>		

No.	Topic	Action by	By date
3	<p>Site visit observations</p> <p>a. Site visit made to the officers from the DWC to understand the present site conditions in UEC-ICB 1 area, and the work that needs to be attended during the period from the UEC-ICB 1 contract is terminated, and the new NCPCP 3 contract packages is awarded.</p> <p>b. DWC emphasized following observations during the site visit resulted due to isolation of the construction site:</p> <ul style="list-style-type: none"> (i) malfunctioning of the existing elephant fence and broken safety net for small animals; (ii) insufficient safety barricading (iii) indirect observations for frequent animal movements within the construction site, and risk of falling animals in to the incomplete canal sections (iv) disturbed stream flows, and water stagnation disturbing natural environment flow path, fish migration etc. (v) Spreading of invasive species (vi) Insufficient site security to the wildlife protected area, with easy access through the construction area (vii) Poor housekeeping, unmanaged stockpiles (viii) Unsafe drainage 		
4	<p>Decisions made during site joint visit by DWC officers</p> <ul style="list-style-type: none"> (i) The existing elephant fence by the CML is not prepared up to the standard, with the acceptable voltage (9.5 to 12 KW) to function effectively. Also, the gauge of the wire in the existing fence is not adequate which should have minimum of 2.5 mm gauge. Hence, the fence needs to re-establish as a new fence, but some of the items (Bullnose, insulator, some energizers etc) can be used. But the best quality energizer is JVA brand, but what is used by CML not in good quality. (ii) Since, there is no adequate buffer kept and maintained along the existing fence, vegetation disturbed the function of the fence. Hence, it is suggested by the DWC to realign the electric fence closer to the excavated sections on the O&M road. (iii) Existing drain by the side of the existing canal diverting storm water, to be maintained and use as a natural barrier to the fence. Hence, maintenance to the side drain to be included as a new item to the BoQ. (iv) The fence shall be established only covering the open areas and incomplete canal sections, where there is a high risk of falling animals. (v) The fence shall be redesigned as a double fence, combining electric fence and the small net fence using a galvanized mesh, so 		

No.	Topic	Action by	By date
	<p>that both fences have electric pulses to keep away both large and small animals from the excavated areas</p> <p>(vi) DWC officers recommended to restore the backfilled areas as grasslands favourable for the elephants, as the UEC-ICB 1 canal is located in the elephant pathway. Hence, tree planting will not be continued on the backfilled areas. However, DWC proposed to have a thick layer of topsoil (about 1 m) to facilitate natural growth, prior to plant the grass sods.</p> <p>(vii) DWC complained about the disposal areas spread around the wildlife areas, which has been resulted due to Moragahakanda project, as well as MWSIP. DWC proposed to remove all the unwanted stockpiles to the permanent disposal sites already approved by DWC for UEC-ICB-1, which are abandoned queries resulted by the Moragahakanda project.</p>		

Confirmed By: _____

Eng. C.H.T. Gamage, Resident Engineer – UECP ICB 01

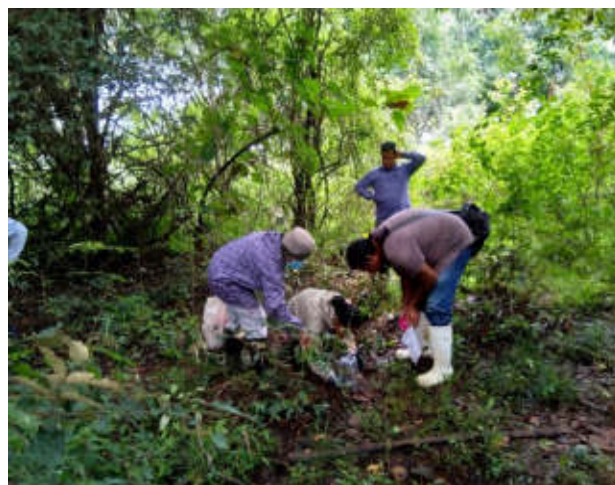
Encls : Annexure 01 - Env contingency plan

Annexure 02- RFQW and BOQ

Annexure 03- updated site plans indicating completed, and incomplete sections with chainage, including stream diversions/ drainages etc

Annexure 04- Maps of the area

Annex 4: Photographic evidence and Species List on Critical Species Translocation UECP-ICB-2A (Palugaswewa)



Annex 5: Actions Taken on Soil Erosion Incident in Palugaswewa – UECP-ICB-2A

PROGRAM MANAGEMENT, DESIGN AND SUPERVISION CONSULTANT

Joint Venture Tractebel Engineering GmbH – Geoconsult ZT GmbH
 c/o Tractebel Engineering GmbH, No. 493, T.B. Jayah Mawatha Colombo 10, Sri Lanka

MAHAWELI WATER SECURITY INVESTMENT PROGRAM

Eng. D.B. Wijayarathne
 Program Director
 Program Management Unit
 Mahaweli Water Security Investment Program
 Ministry of Mahaweli Development and Environment
 493 1/1, T.B. Jayah Mawatha, Colombo 10

Our ref.: 27.4_L04664

Date: 26 April 2021

Subject: Contract Package UECF-ICB-2A

Subject: Grievances – soil erosion causing damage to the farmlands and village tank at the northern Start Shaft area

Your Ref:

(1) E-mail from Environment Specialist "Subject: Grievances of soil erosion to the farmlands and village tank-Northern Portal-ICB-2A" (24.04.2021 at 12.05 a.m.)

Dear Mr. Wijayarathne,

Reference is made to the Environment Specialist's email cited above in relation to soil erosion and damage to paddy lands and a village tank adjacent to the northern start shaft area recently cleared by the Contractor. This letter aims to inform you about these incidents and the corrective measures taken by the Engineer.

A chronology of events is shown below.

(1)	24.02.2021	Joint inspection of Site boundaries & demarcation of the northern start shaft area, resulting in an instructing to CSCEC to submit a method statement (MS) prior to site clearing adhering to EMP guidelines
(2)	01.03.2021	Inspection by Engineer/Contractor, and communicating discussion points (Ref. PMDSC-CRE-UEC/ICB-2A/ CSCEC/005 dated 08 March 2021) highlighting again the requirement to submit MS prior to site clearing, keeping adequate buffer to the irrigation tanks and streams adjacent to the northern start shaft area prior to site clearing
(3)	18.03.2021	Training for the environment officer was given and repeated the requirement to prepare MS, and attend to required mitigations prior to site establishment
(4)	25.03.2021	CSCEC was reminded again to submit the MS and to keep a buffer to the associated water bodies, and to avoid exceeding site boundaries in of the northern start shaft area
(5)	01.04.2021	During a joint visit to plan preparation for ADB / Secretary visit, it was noted that CSCEC had cleared the site without keeping the instructed required buffer to the tank, and he was again advised to attend to the required erosion control measures
(6)	07.04.2021	e-mail communication reminding Contractor of Due Submissions- Site Drainage Networks in Northern start shaft area
(7)	09.04.2021	Letter issued to CSCEC reminding them again to submit MS and take required preventive measures preventing soil erosion, as well as reminding them of their contractual obligations to attend to the required compensations to the affected parties (Ref. PMDSC-CRE-UEC/ICB-2A/ CSCEC/0029 dated 09 April 2021) E-mail communication to CSCEC to attend to required mitigations before closing the sites for the New Year holiday, under the supervision of EMS-PMDSC on 09.04.2021
(8)	10.04.2021	Letter issued to CSCEC with a pictorial update describing insufficient corrective measures taken to prevent soil erosion to the irrigation tank and farmlands alarming

	the possible risks (Ref. PMDSC-CRE-UEC/ICB-2A/ CSCEC/0031 dated as 10 April 2021
--	--

Following the repeated reminders and follow-up by the Engineer as described in the table above, CSCEC has finally submitted their draft proposal to manage the situation on 22 April 2021. This is attached as **Annex 1**. To date CSCEC's response to required corrective actions was not satisfactory (Refer to **Annex 2** for the present progress), and hence a special environment meeting was called on 26 April 2021 to emphasize the risks of not following required guidelines, and of not complying with the Contract as it is related to Environment safeguard management. **Annex 3** comprises minutes of the meeting.

We will further update you in this regard with the Contractor's progress of attending to the required mitigation measures. The Engineer will continue to follow up and to provide necessary guidance to the CSCEC with close supervision. The Contractor has also been reminded of his obligation to establish a Grievance Log, where members of the public may lodge their grievances, mitigation of which must then be coordinated with the Engineer and the Employer.

Yours sincerely
Program Management, Design and Supervision Consultant



Michael Chagwin
Team Leader

also for

P.W.C. Dayaratne
Deputy Team Leader

MWSIP - PMDSC	
493, T. B. Jayah Mawatha, Colombo 10.	
Registered Outgoing by :	Ln
Team Leader	LWC
Sent Date:	26 APR 2021
Copies to:	EVH RAE APK SK /

Sucharitha

Temporary Preventive Measures for Soil Erosion at Northern Shaft and Contractor Main Camp Site.

1. There are two critical places identified where temporary soil erosion measures should be applied.
 - I. Natural water way (occasional) across the site beside the land filling area for proposed segment yard.
 - II. Catchment area of Meegaswewa Lake along Southern boundary area of contractor main camp.
2. Proposed temporary preventive measures for above two places.
 - I. Natural water way (occasional) across the site beside the land filling area for proposed segment yard.
 - a. Loose soil heap beyond the cut slope of the filling will be removed from the place.
 - b. At the water flowing path, Cut the 5m x 5m x 5m silt trap and trap the eroded soil in the trap.
 - c. Downstream of the silt trap make a soil barrier across the water flowing path.
 - d. At banks of stream, near to the culvert mouth, make a barrier using dried tree branches across the water path to catch the silt.
 - II. Catchment area of Meegaswewa Lake along southern boundary area of Contractor main camp.
 - a. Construct temporary soil bund covered by tarpaulin with height of 1m with nearly 30m length along the area where water is entering the catchment of the lake.
 - b. Existing soil near the catchment area will be taken back by 5m and covered by temporary tarpaulin coverings.

Photographs taken from Soil Erosion area at Northern Shaft area and Main camp area.

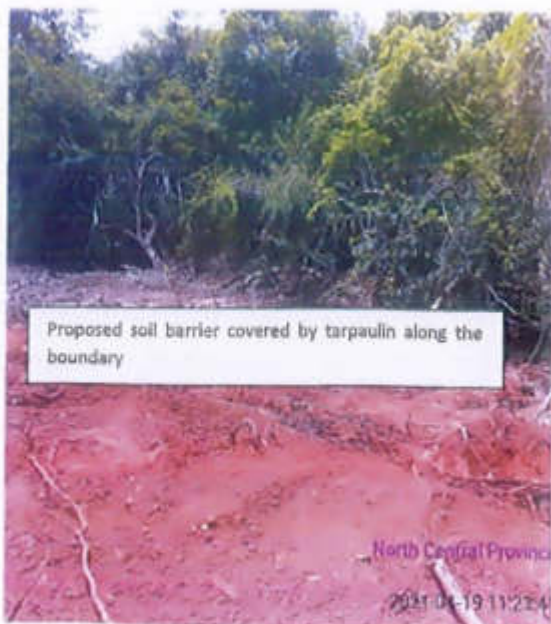


Northern Shaft area water path beside the filling area.

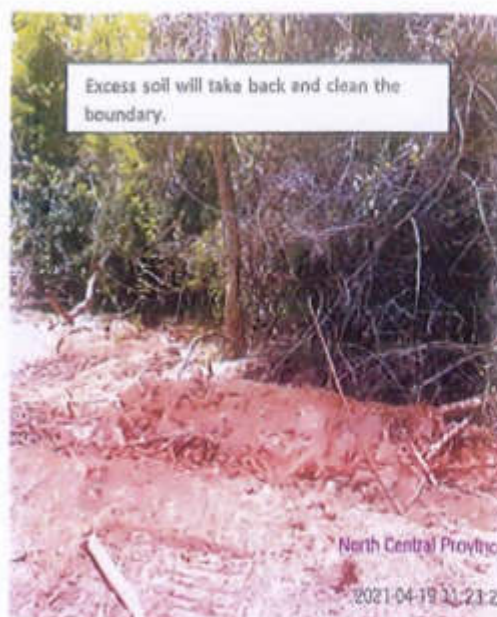
Culvert for the water path.



Water path.



Contractor main camp southern boundary
Soil erosion area.



Contractor main camp southern boundary
Soil erosion area.



Contractor main camp southern boundary
Soil erosion area.



Drain cut at the southern boundary. This will be closed.

Annex 2: Current Progress

Date	Progress
Up to 20-04-2021	<p>The Contractor neglected to take any erosion protection measures before the site closer period from 11 April 2021 despite repeated verbal and written instructions given to him.</p> <p>On 19 April 2021, the Contractor started earthmoving work without having any erosion protection measures. It was observed that, due to torrential rains during site closure period, sediment washed to the tank and by the time of site opening all sediments were settled in the tank bed. The villagers of the area noted that the color of the water in whole tank changed after the rain events due to sediment flow. No major destruction was observed in paddy field area since sediment was washed away to the tank across the paddy fields due to torrential rains.</p> <p>A joint inspection was conducted with the participation of PIU, PMDSC, CSCEC and representatives of Farmer Organization of Maha Meegaswewa. During the Joint Inspection, the Contractor agreed to attend to the following:</p> <ol style="list-style-type: none"> 1. Make temporary arrangements immediately to avoid further soil erosions of the area. 2. Take permanent actions to protect the area following submission of proposals for permanent measures for the Engineer's approval. <div data-bbox="416 965 1289 1621">  </div>
21-04-2021 onwards	<p>No acceptable temporary preventive measures were implemented except for preparing an uncovered soil bund as a "silt trap" u/s of the second culvert. One covered soil bund has been prepared just above the tank, leaving a critical area open. Heavy rain during the night of 21 April 2021 caused considerable damage to paddy lands and the tank.</p>



ENVIRONMENTAL MEETING

SOIL EROSION AT MAIN CAMP SITE

Contract Package: UECP-ICB-2A

Contract Number: MMDE/MWSIP/ADB/UECP/ICB-2A/P47381-005-SRI/ICB/2017/006

Meeting Date: Monday, 26th April 2021

Meeting Time: 10.00 AM

Venue: PMDSC CRE's Office, Dambulla

Meeting Title: Special Meeting to Discuss Environmental Issues in the Northern Shaft area, Mahameegaswewa

Chairperson of the Meeting: Resident Engineer

Agenda

Description	Time Allocated	Actual Time Taken	Presenter
1. Brief Description of the current situation at the site and ongoing concerns by the Employer and neighbourhood parties	5 min		RE-PMDSC
2. The Contractor's mitigation, arrangements and action taken upto now	10min		PM- CSCEC
3. Issues and voids identified in arrangements taken at the site	10min		PMDSC
4. Requirements of proper measures and permanent solutions for the matter	10min		PMDSC
5. Difficulties observed in arrangements and assistance required from the Engineer if any	10 min		CSCEC
6. Regularization of monitoring the progress/continuation to avoid future reoccurrences	10min		CSCEC, PMDSC
7. Any other issues or Important matters	5min		CSCEC, PMDSC
Total Allocated Time/Actual Time	60 min		

MINUTES OF MEETING

Date: 10.04.2021, 10:00 – 10:45
Location: CRE Office, Dambulla
Attendees: CSCEC: Mr Liu (DPM), Mr Ding (CM), Mr Janaka (EO)
PMDSC: Mr. Römer (CRE), Mr. Dissanayake (ARE), Dr. Anusha (ES), Mr. Evers (RE)
Minuted by: Mr. Evers

1. STATUS OF TEMPORARY MITIGATION MEASURES

The Contractor informed the meeting that temporary mitigation measures are being installed, in particular along the southern-western border along the tank, comprising a silt trap and sand-bagging.

Refer to the enclosed photographs + sketch.

Other “critical” points with high erosion potential have been identified as the 2 x culverts close to the tank and the paddy field along the southern border.

Temporary measures for these 2 x culverts shall be implemented asap (by today) to prevent further damage to the adjacent land by soil erosion.

All the slopes along the perimeter of the camp area shall also be protected with adequate preventive measures: refer to attached sketch.

2. PERMANENT MITIGATION MEASURES

The Contractor is planning to submit a detailed Method Statement for the site drainage including soil erosion measures by this weekend (01 May 2021).

This document shall contain proper drawings and shall include drainage paths / flow directions, the adjacent tank and paddy field as well as sufficient technical details in accordance with best practice for erosion measures.

Where these details do not exist, the performance of the implemented measures shall be regularly monitored and revised where required (PDCA cycle).

3. FIELD VISIT

A joint site visit is planned by PIU with local officials on 27.04.2021 in the morning, time unknown. This is for information.

At present it is not confirmed whether the CON or ENG is requested to attend.

4. ORGANISATIONAL MATTERS

All parties highlighted that despite the risk and potential consequences of soil erosion having been identified as early as end-FEB 2021, the Site failed to have anti-erosion measures in place in time to prevent / mitigate the events during 12-18 APR 2021 and 21 APR 2021, which led to partial sedimentation of the adjacent tank and paddy field.

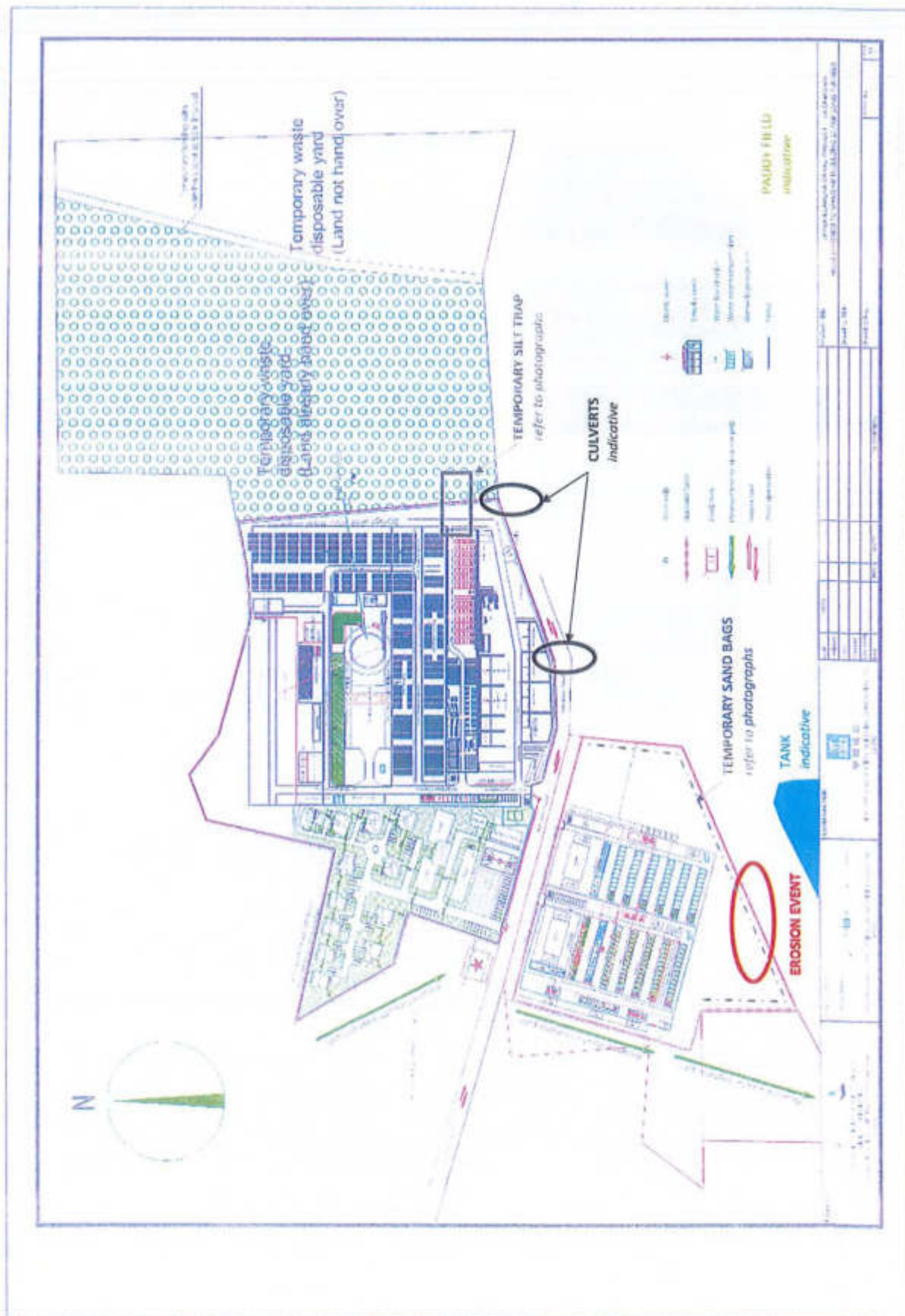
In the meantime grievance complaints have been received by the Employer, which may also turn into associated media coverage, and may have serious and direct consequences for the Site and the Project.

All parties agreed to review internally their organisation and correspondence procedures to prevent similar incidents in the future, where potential risks have been identified well in advance but timely implementation is failing.

5. PRIORITIES

The agreed priorities are:

1. Implement temporary mitigation measures to prevent further damage by 26 APR 2021 and update the Engineer on the Implemented actions with photographic evidence by 27 APR 2021;
2. Devise & Implement permanent mitigation measures based on the Contractor's MS, as expected by 01 MAY 2021, reviewed & approved by the ENG;
3. Strengthening & supporting the Contractor's Environmental team with necessary resources and supports from the Contractor's management;
4. Continuous site monitoring by the CON & ENG for effectiveness and sufficiency of implemented mitigation measures;
5. Identify other potential events, which could result in environment & social grievance of the public, to evaluate jointly possible mitigation measures as well as a joint commitment.



Lin Den



temporary water channel

Sediment tank
to collect rainwater





Slope
Trim

Greenhouse bags sample
(50m long)
Height: 100cm

5MAHAWELI WATER SECURITY INVESTMENT PROGRAM (MWSIP)	
CONSTRUCTION OF UPPER ELAHERA CANAL FROM 27+509 km TO 55+600 INCLUDING 27.7 km LONG TUNNELS	
CONTRACT PACKAGE: UECP-ICB-2A	
NON-COMPLIANCE REPORT (NCR) No. 001	
Contract No.:	MMDE/MWSIP/ADB/UECP/ICB-2A/P47381-005-SRI/ICB/2017/006
Name of Contractor:	China State Construction Engineering Corporation Ltd (CSCEC).
Incident and Location:	<ul style="list-style-type: none"> The Contractor has neglected to attend adequate soil erosion prevention measures at northern portal area.
Recorded Date:	18 th May 2021
Environment Incident Description:	
<ol style="list-style-type: none"> 1. Since 24th March 2021, the CSCEC has been instructed both verbally and in writing on multiple occasions to take necessary preventive actions to avoid soil erosion and siltation of paddy fields and the village tank due to expected rains. (PMDSC-SITE-ICB_2A-CSCEC-0016 dated 25-03-2021, PMDSC-SITE-ICB_2A-CSCEC-0029 dated 9-04-2021, PMDSC-SITE-ICB_2A-CSCEC-0031 dated 10-04-2021, Minutes- Weekly Coordination Meeting- WC-003 on 28-04-2021, Minutes- Weekly Coordination Meeting- WC-004 on 12-05-2021) 2. Heavy soil erosion and siltation in the tank / paddy field was reported several times (3 or more times, during site closure period from 11th to 18th April 21st April and 14th May). 3. The Contractor neglected to take adequate and timely actions (either temporary or permanent) to prevent soil erosion and siltation. It seems, the Contractor attempted to pass time with partial preventive measures expecting cessation of rains. 4. Resident farmers have complained twice regarding sedimentation in the nearby irrigation tank (Maha Meegaswewa) and loss of crops in the paddy field area. Relevant authorities inspected the Site, and their recommendations have been given to prevent further erosion alongside our suggestions and advice. 5. The Contractor's failed to submit Method Statement for Earthworks and Method Statement for Prevention of Soil Erosion at the area, in spite of numerous reminders from the Engineer. 6. Contractor's has ignored Engineer's guidance. 	
Non-compliance status and Impact	
<p>An irreversible damage caused to the environment due to negligence of the Contractor and not committing to the job responsibilities of the Contractor's, in particular non-compliance with following:</p> <ol style="list-style-type: none"> (i) Soil Conservation Act No.25 of 1951 and 29 of 1953, 1956 revision and 1996 amendment (ii) Agrarian Services Act, No. 58 of 1979 and its amendments 2000, 2011 (iii) National Environmental (Ambient Water Quality) Regulations, No. 01 of 2019 (iv) Disturbance to the area within 100 meters from the high flood level contour of or within a public lake as defined in the Crown Lands Ordinance (Chapter 454) including those declared under section 71 of the said Ordinance (v) Section 1.17.4.3 and 1.17.4.4 of the Volume-2, Employer's Requirements - Section 6 & Specification, of the Contract agreement for UECP-2A (vi) National Environmental Act No: 47 of 1980 amended by Acts No 56 of 1988 and No 53 of 2000 issued through Conditional approval from CEA (Section 4 of Ref. 08/EIA/Water/04/2012 dated 31.03.2016 and renewed approvals) EIA for UECP (June 2015) and updated EMP for UECP-2A (Dec 2020) <p>Refer to photographic documentation overleaf.</p>	



Overtopped sand bag barrier and siltation in tank



Siltation close to tank



Silt flow to the paddy field area



Siltation in paddy field area

Corrective Action / Recommendations Proposed:

- Submit the Corrective Action Plan (CAP) indicating method of rectification immediately as per the acceptance by the community, farmland owners, and Agrarian Services Department and relevant affected parties
- Immediately restore the location and produce progress of CAP to RE including all corrective actions with photographic evidence to close the NCR.
- Since this is a non-reversible environmental impact made by the contractor due to its ignorance, it will be subjected to a 5% deduction from the relevant BoQ item for the period until closing the NCR.

Recorded by: Environmental Monitoring Specialist of PMDSC

Signature: H. Evers, 19.05.2021

Remarks/ Follow up action by the Contractor: