

# Environmental Monitoring Report

---

Semi-Annual Report no. 8  
For the period covered July to December 2020  
Project Number: 47381-002  
January 2021

## Sri Lanka: Mahaweli Water Security Investment Program – Tranche 1

North Western Province Canal Project (NWPCP)

Prepared by Ministry of Mahaweli Development and Environment with the assistance of Program Management, Design and Supervision Consultant (Joint Venture Tractebel Engineering GmbH – GeoConsult ZT GmbH) for Democratic Socialist Republic of Sri Lanka and the Asian Development Bank.

This environmental monitoring report is a document of the borrower. The views expressed herein do not necessarily represent those of ADB's Board of Directors, Management, or staff, and may be preliminary in nature.

In preparing any country program or strategy, financing any project, or by making any designation of or reference to a particular territory or geographic area in this document, the Asian Development Bank does not intend to make any judgments as to the legal or other status of any territory or area.

# Mahaweli Water Security Investment Program

## Semi Annual Environmental Monitoring Report (SAEMR) No. 08 for North Western Province Canal Project (NWPCP) (July to December 2020)



**Ministry of Irrigation**  
Sri Lanka



January 2021  
**Final Report**

**TRACTEBEL ENGINEERING GMBH**

Friedberger Straße 173 – 61118 Bad Vilbel – Germany

Tel.: +49 6101 55-0 – Fax: +49 6101 55-2222

info-de@tractebel.engie.com

www.tractebel-engie.com

**SAEMR No. 08 for NWPCP**

Project Number     H.503409  
Subject               Project Report  
Project Director     Dr. Beau Freeman  
Country               Sri Lanka

Project Title:     **Mahaweli Water Security Investment Program**

Client                Ministry of Irrigation

Prepared for     Program Management Unit  
Mahaweli Water Security Investment Program  
No. 493 1/1 Jayah Mawatha  
Colombo 10  
Sri Lanka

Prepared by     Program Management, Design and Supervision Consultant  
Joint Venture Tractebel Engineering GmbH – GeoConsult ZT GmbH  
in Association with NIRAS (Denmark),  
Engineering Consultants Ltd. (Sri Lanka), and  
Infotechs IDEAS (Pvt.) (Ltd.) (Sri Lanka)  
No. 493 T.B. Jayah Mawatha  
Colombo 10  
Sri Lanka

Tractebel Engineering (main office)  
Friedberger Str. 173  
61118 Bad Vilbel, Germany  
Phone: +49 6101 55 1810  
beau.freeman@tractebel.engie.com

Date                  March 2021

Revision	Date	Status	Author	Checked	Approved
0	21 Jan 2021	Draft approved	Anusha Kasige	M. Chegwin	M. Chegwin
1	24 Mar 2021	Approved	Anusha Kasige	M. Chegwin	M. Chegwin

© TRACTEBEL ENGINEERING GmbH, 2021

The information contained in this document is proprietary, protected and solely for the use of the Client identified on the cover sheet for the purpose for which it has been prepared. Tractebel Engineering GmbH undertakes no duty, nor accepts any responsibility, to any third party who may wish to rely upon this document.

Save to the extent agreed otherwise with the Client all rights are reserved and no section or element of this document may be removed from this document, reproduced, electronically stored or transmitted in any form without written permission of Tractebel Engineering GmbH.

## ABBREVIATIONS

ADB	Asian Development Bank
ABOP	Air Blast Over Pressure
BFO	Beat Forest Officer
CEA	Central Environment Authority
CSCEC	China State Construction Engineering Corporation
DWC	Department of Wildlife Conservation
EIR	Environment Incident reports
EO	Environment Officer
EPL	Environmental Protection License
FFPO	Fauna and Flora Protection Ordinance
H&S	Health and Safety
EHS	Environment, Health and Safety
EMS	Environment Monitoring Specialist
EIA	Environment Impact Assessment
E -NCR	Environment Non-conformity Record
EMP	Environment Management Plan
FD	Forest Department
GRM	Grievance Redress Mechanism
LHS	Left Hand Side
NWPCP	North Western Province Canal Project
NWS&DB	National Water Supply and Drainage Board
MS	Method Statement
O&M	Operation and Maintenance
PIU	Progress Implementation Unit

# TABLE OF CONTENTS

<b>1</b>	<b>INTRODUCTION .....</b>	<b>1</b>
1.1	Scope of the Report.....	1
1.2	Overall Progress of NWPCP as of December 2020 .....	2
1.2.1	NWPCP-NCB-1 .....	2
1.2.2	NWPCP-ICB-1 .....	3
1.2.3	NWPCP-ICB-2.....	4
1.2.4	Pipeline packages under NWPCP Tranche 3 .....	6
<b>2</b>	<b>CHANGES IN PROJECT SCOPE AND ADJUSTED SAFEGUARD MEASURES .....</b>	<b>8</b>
2.1	Package specific scope changes – updates to SAEMR # 07 .....	8
<b>3</b>	<b>ENVIRONMENTAL MONITORING IN NWPCP.....</b>	<b>10</b>
3.1	Organizational set up for NWPCP Environmental Monitoring & Reporting.....	10
3.2	Monitoring Records in NWPCP-NCB-1 and ICB-2 (July to December 2020) .....	14
3.2.1	NWPCP-NCB-1 .....	14
3.2.2	NWPCP-ICB-2.....	16
3.3	Public Grievances on Environmental Matters .....	26
3.4	Health & Safety Highlights for the Reporting Period .....	26
<b>4</b>	<b>PLANNED ACTIVITIES FOR NEXT SEMESTER (JANUARY – JUNE 2021).....</b>	<b>28</b>

## LIST OF FIGURES

Figure 1-1: Overall package progress of NWPCP-NCB-1 as of end December 2020	3
Figure 1-2: Overall package progress of NWPCP-ICB-2 as of end December 2020	4
Figure 1-3: Map of NWPCP-NCB-1 Project area	5
Figure 1-4: Map of NWPCP-ICB-1	5
Figure 1-5: Map of NWPCP-ICB-2 Project area	6

## LIST OF TABLES

Table 1-1: Summary of ongoing construction packages in the NWPCP	2
Table 1-2: Environmental related activities achieved under NWPCP-ICB-1 during the reporting period.	3
Table 1-3: Status of other packages pipeline under NWPCP	6
Table 2-1: Updates of scope changes related to NWPCP during reporting period.	8
Table 3-1: Key meetings, stakeholder consultations and joint inspections attended by the	10
Table 3-2: Site-specific environmental issues recorded in NWPCP-NCB-1 during the reporting period	14
Table 3-3: Photographic records of the NWPCP-NCB-1 area	15
Table 3-4: Records of E- NCR during the reporting period	17
Table 3-5: Update of environmental compliance status observed during reporting period in	18
Table 3-6: Photographic evidence captured during the reporting period in NWPCP-ICB-2 area	21
Table 3-7: H&S Highlights related to NWPCP during the reporting period	26

## LIST OF ANNEXES

Annex 1: Public grievances recorded by the NWPCP-ICB-2 Contractor
---

# 1 INTRODUCTION

## 1.1 Scope of the Report

1. This Semi-Annual Environmental Monitoring Report (SAEMR) No. 8 is prepared to update reporting of the progress of North Western Province Canal Project (NWPCP) with respect to environmental safeguard aspects for the period of July to December 2020, which fulfils Asian Development Bank (ADB) requirement to submit a SAEMR to ADB and Central Environmental Authority (CEA) for the “Category A” projects as documented in FAM1 and EARF2.

2. The purpose of this report is to monitor whether the Project is implemented with due concern for environmental and social safeguards according to the ADB’s Safeguard Policy Statement (SPS) 2009, and specifically to ensure that these issues are adequately addressed in compliance with the requirements of ADB. Further, this report is to assess the progress with implementation of the program in complying with the approved Environmental Impact Assessment (EIA)<sup>3</sup>, including: (i) the Addendum to the EIA: NWPCP Tranche 1 packages (May 2017) and Environmental Management Plan (EMP) as per the stipulation No. 14.3 of the EIA approval No. 08/EIA/WATER/07/2012 issued by CEA of 23 February 2016; (ii) renewed approval by CEA on 11.03.19 by letter Ref. Ref.08/EIA/Water/07/2012 /Vol 3, which is valid until 23 Feb 2022; and (iii) approval for the addendum (Ref.08/EIA/Water/07/2012/Vol 2 dated 11 April 2018).

3. This SAEMR is prepared addressing the following aspects, based on the available information as at the end of the monitoring period from July to December 2020:

- (i) Background/context of the monitoring report (information on the project, including physical progress of project activities, scope of monitoring report, reporting period, and the monitoring requirements including frequency of submission as agreed upon with ADB).
- (ii) Changes in project scope and adjusted safeguard measures.
- (iii) Environment Qualitative monitoring data.
- (iv) Monitoring results compared against previously established benchmarks and compliance status (e.g., obtaining necessary approvals for establishment of certain facilities, national environmental emission and ambient standards and/or standards set out in the World Bank’s (WB’s) Environmental Health and Safety (EHS) guidelines; timeliness and adequacy of environmental mitigation measures; and training, capacity building, etc.).
- (v) No major gaps were identified other than the general project induced impacts in the NWPCP area, and hence there was no requirement of preparing a “Corrective Action Plan” during the reporting.
- (vi) Records on disclosure of monitoring information to affected communities.
- (vii) Identification of key issues, or grievances from affected people, or recommendations for improvement.
- (viii) Proposed items of focus for the next reporting period and due date.

4. This SAEMR for NWPCP is prepared by the Environmental Specialist (ES) of the Program Management Design and Supervision Consultant (PMDSC) based on the monthly monitoring and progress reports received from the Environmental Monitoring Specialist (EMS) of PMDSC and information extracted from the Contractors’ monthly progress reports. Further, the report contains the observations and records of the ES of PMDSC made

<sup>1</sup> Paragraph 60 of Facility Administration Manual (FAM), June 2015 prepared by MMDE.

<sup>2</sup> Paragraph 111 of Environmental Assessment Review Framework (EARF) November 2014 (updated in June 2017) by MMDE.

<sup>3</sup> Environmental Impact Assessment Report (EIAR) dated June 2015 and approved by CEA on 31.03.2016.



as per the site visits attended once a month, including records of monthly environmental meetings, and records of the random visits that take place when significant environmental incidents are reported.

## 1.2 Overall Progress of NWPCP as of December 2020

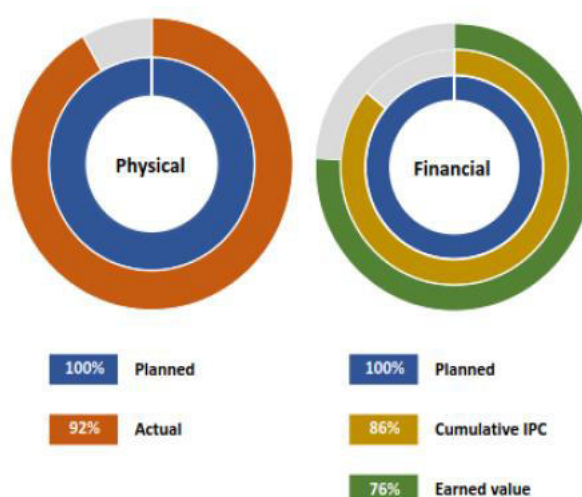
5. There are two active packages where construction is ongoing, which are NWPCP-NCB-1 and NWPCP-ICB-2, and the new package NWPCP-ICB-1 was awarded in December 2020. The summary of the NWPCP active packages is given in the **Table 1-1**.

**Table 1-1: Summary of ongoing construction packages in the NWPCP**

Item	NWPCP-NCB-1	NWPCP-ICB-1	NWPCP-ICB-2
Contract No.	MMDE/MWSIP/ADB/NWPC P/NCB-1/3267-3268-SRI/NCB/2016/001	MMDE/MWSIP/ADB/NWPC P/ICB-1/3267-3268-SRI/ICB/2017/005	MMDE/MWSIP/ADB/NWPC P/NCB-1/3267-3268-SRI/NCB/2016/001
Contractor	M/s. NEM Construction (Pvt) Ltd.	CAMCE-QMCG JV	China State Engineering Corporation Ltd
Commencement Date	29 December 2016	11 December 2020	01 November 2018
Accepted Contract Amount	LKR 926,113,863.39 (incl. VAT)	LKR 10,776,758,949.81 (incl. VAT)	LKR 7,226,621,051.00 (incl. VAT)
Original Completion Date	27 December 2018	15 April 2024	06 May 2021
Updated Completion Date (determined Extension of Time to date)	06 January 2021	Unchanged to date	11 April 2022
Engineer's Forecast Completion Date	28 February 2021	Unchanged to date	31 December 2022

### 1.2.1 NWPCP-NCB-1

6. Scope of NWPCP-NCB-1 package comprises improvements to the existing Wemedilla Left Bank Main Canal up to Nabadagahawatta (0 km to 5+250 km) and construction of a new sluice and tail canal (0 km to 0+600 km). NWPCP-NCB-1 construction works, which were resumed in November 2019, was set with a strict deadline for the completion by November 2020. The actual physical progress by the end of December 2020 is recorded as 92%, which is behind the planned progress of 100%. Hence, the Engineer's prediction for the NWPCP-NCB-1 will be end of February 2021, if the Contractor continues the same rate of work progress.



**Figure 1-1: Overall package progress of NWPCP-NCB-1 as of end December 2020**

7. **Figure 1-1** shows the graphical representation of the overall progress of the NWPCP-NCB-1 package by end June 2020.

### 1.2.2 NWPCP-ICB-1

8. Both the signing of the Contract Agreement and the holding of the Kick-off meeting of NWPCP-ICB-1 package took place on 11 December 2020, and the Notice to Commence will be issued, once the Employer has notified dates for handing over possession of the Site to the Contractor after completing the tree felling activities. Activities related to Environment Safeguard aspects has been achieved during the reporting period related to NWPCP-ICB-1 as summarized in **Table 1-2**.

**Table 1-2: Environmental related activities achieved under NWPCP-ICB-1 during the reporting period.**

Item	Progress / achievements
(i) Joint visit with the DWC Director – Planning & Operations (Mr Manjula) and his regional staff, PMU, PIU and PMDSC relevant specialists to understand the key requirements / preparations prior to award the contract	Made the visit on 09 October 2020, and agreed actions are being followed up and attended by PMDSC Environment team.
(ii) Updated EMP Rev B including Scope changes as per ADB requirements and addressing DWC requirements.	Completed and submitted to PMU to share with ADB and CEA
(iii) Tree enumeration along the proposed Access roads	EMS of PMDSC attended with PIU team on 27 & 29 October and 3, 5 and 6 November 2020 to provide technical inputs identifying trees with its scientific names to prepare tree list for PIU.
(iv) Leaflet on “Notice from Wildlife: Rules to Follow” to issue NWP ICB 1 and UEC ICB 2A	Draft is prepared and finalizing it including graphics, line diagrams where necessary.

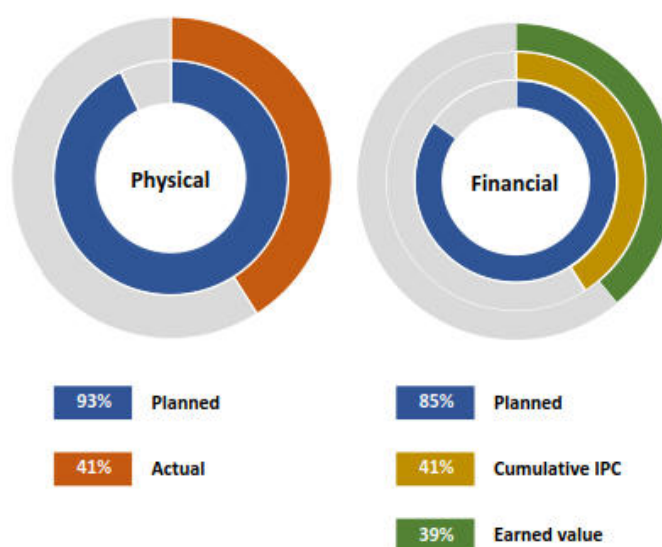
(v) Baseline Environment Quality data collection	PSO for Environmental Quality data collection is drafted and waiting Contractor to mobilize to implement under the Provisional Sum budget.
--	--

### 1.2.3 NWPCP-ICB-2

9. NWPCP-ICB-2 package comprises the construction of the main canal from Nebadagahawatta to Mahakithula reservoir inlet tunnel (from 5+250 km to 22+500 km), which anticipates a significant amount of ecological and social environmental impacts due to the environmental sensitivity of the project area. The two sections, 18+503 km to 19+650 km and 20+700 km to 22+300 km, fall within the Kahalla-Pallekele wildlife sanctuary under the jurisdiction of Fauna and Flora Protection Ordinance (FFPO). The land ownership is with the Forest Department (FD) as the canal trace traverses through Kahalla-Pallekele Forest reserve, and the rest of the area traverses through rural residential, agricultural areas which have acquired for the project. However, the Contractor has to face a significant level of constructional direct and indirect impacts, as the cut and cover canal disturbs community life due to access issues, dust, noise, vibration, and other associated impacts.

10. The original contractual Completion Date was set as 06 May 2021, but it is apparent that the Contractor will take longer to complete the Contract, as the actual physical progress of NWPCP-ICB-2 package by the end of December 2020 is recorded as 41% against the planned construction progress of 93%. Apart from the Contractor's slow progress, there have been many delays due to land acquisition issues.

11. **Figure 1-2** shows the graphical representation of the overall progress of the NWPCP-ICB-2 package by end December 2020.



**Figure 1-2: Overall package progress of NWPCP-ICB-2 as of end December 2020**

12. The maps of the NWPCP-NCB-1, ICB-1 and ICB-2 project areas are shown in **Figure 1-3**, **Figure 1-4**, and **Figure 1-5** respectively.



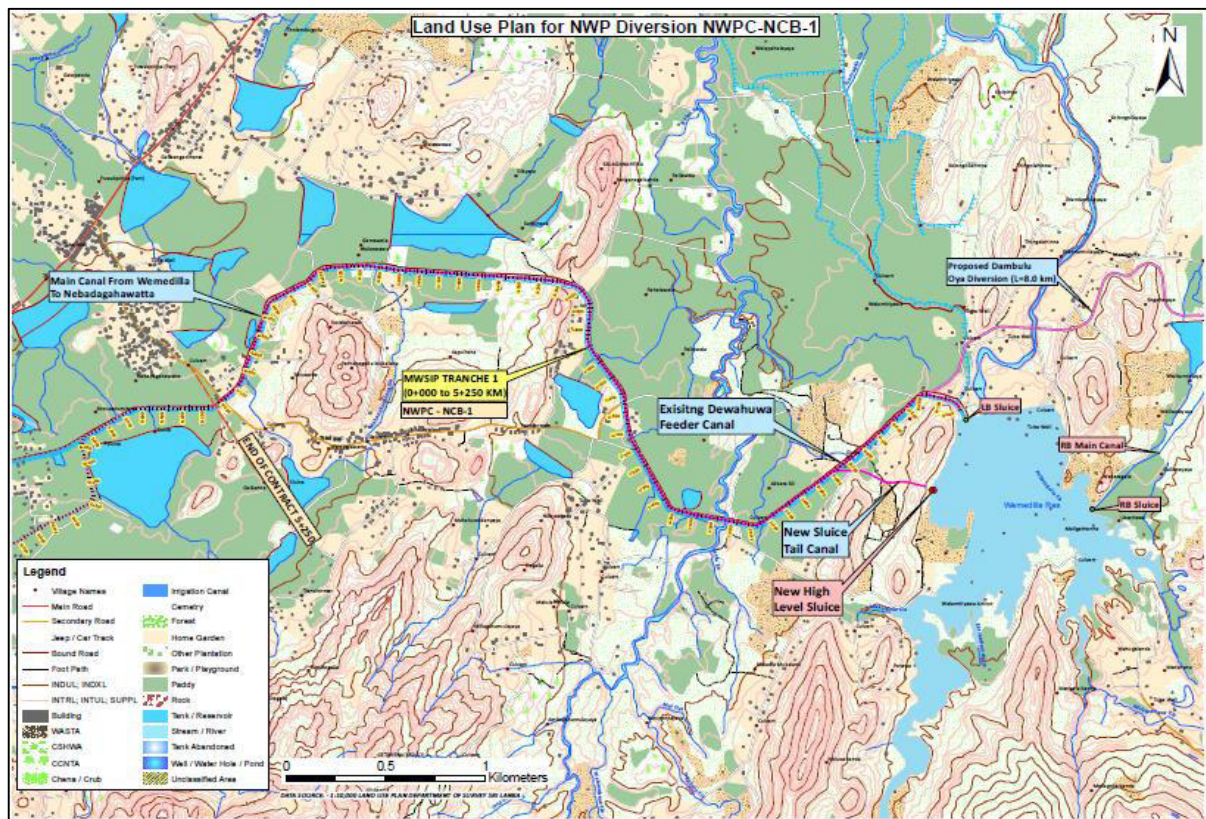


Figure 1-3: Map of NWPCP-NCB-1 Project area

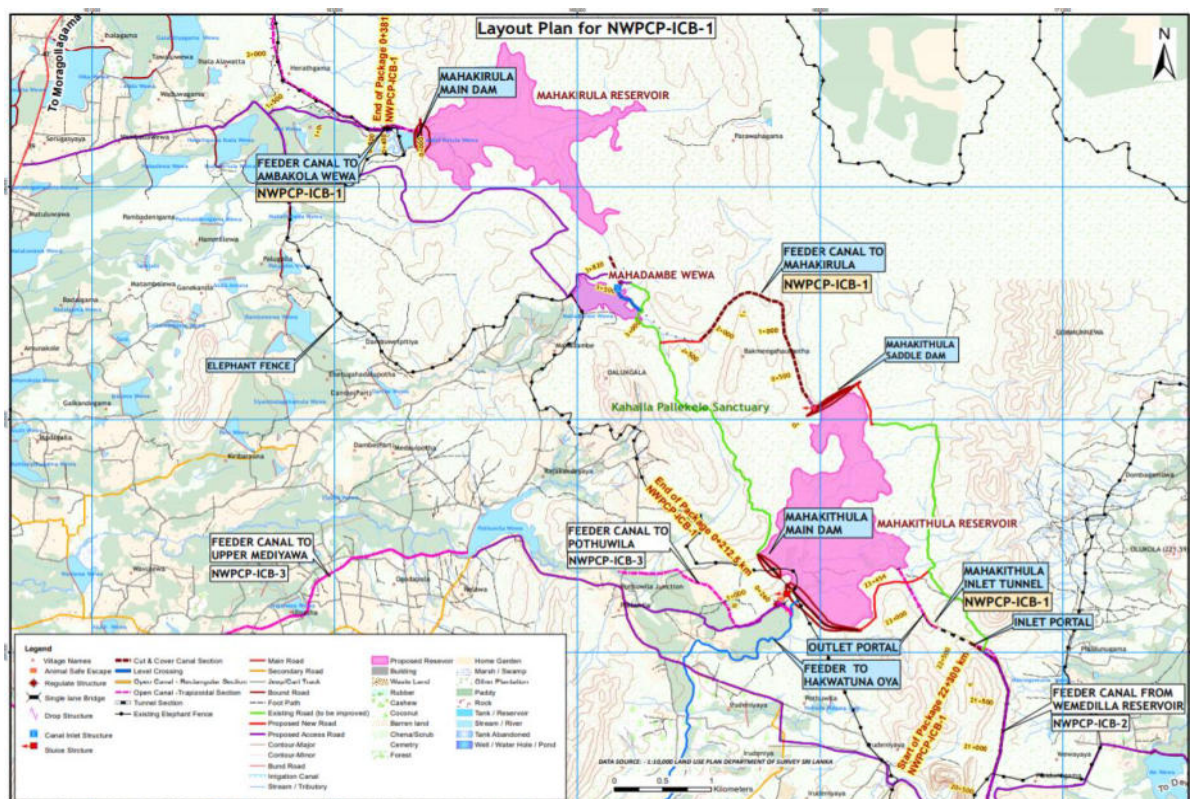


Figure 1-4: Map of NWPCP-ICB-1



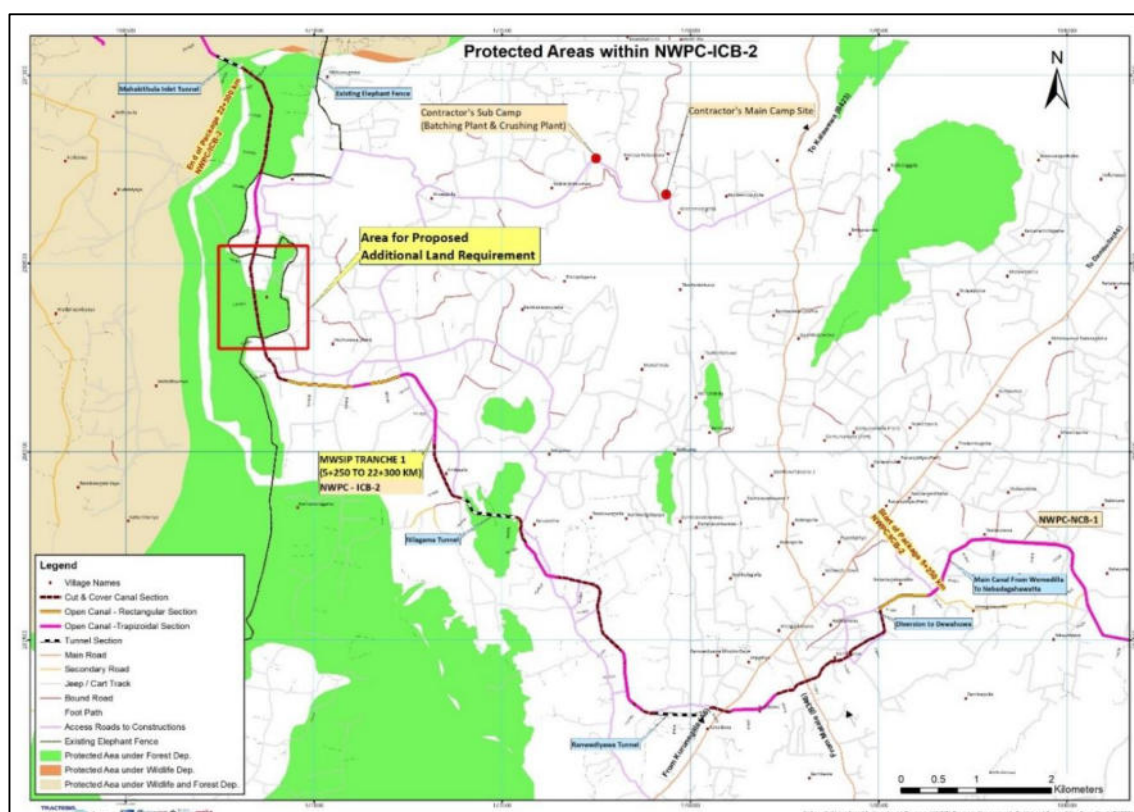


Figure 1-5: Map of NWPCP-ICB-2 Project area

### 1.2.4 Pipeline packages under NWPCP Tranche 3

13. Table 1-3 summarizes the progress of rest of the ICB packages pipeline under NWPCP.

Table 1-3: Status of other packages pipeline under NWPCP

Package	Description	Progress by end December 2020
NWPCP 3 (earlier abbreviated name was NWPCP-ICB-3)	Construction of Feeder Canal from Mahakirula to Kaduruwewa (20.9 km)	<ul style="list-style-type: none"> <li>Updated EMP completed and submitted to PMU along with the bidding documents under previous contract package named as NWPCP ICB 3 on 11 April 2019</li> <li>Bidding documents and EMP for the new package list of works is under preparation</li> </ul>
NWPCP 4 (earlier abbreviated name was NWPCP-ICB-3)	Feeder Canal from Mahakithula to Pothuwila (2.0 km), Upper Mediyawa (19.9 km) and Yapahuwa (8.9 km)	
NWPCP 5 (earlier abbreviated as NWPCP-ICB-4)	Construction of North Western Province Canal from Dambulu Oya to Wemedilla LBMC (0+000 km to 8+575 km) and Diversion Structure	<ul style="list-style-type: none"> <li>Link canal from Dambulla Oya to NWPC is replaced by Bowatenna Tunnel 2 (BT2)</li> <li>Systematic groundwater level monitoring of 19 groundwater monitoring wells located in the up-stream area of the Bowatenna Tunnel is ongoing since 12 September 2019. Readings are taken by PIU on a weekly base. This program was temporarily suspended from 20th March 2020 to 23 April 2020</li> </ul>

Package	Description	Progress by end December 2020
		<p>due to Covid-19 spread and restarted by end April 2020.</p> <ul style="list-style-type: none"> <li>▪ Geotechnical investigations and laboratory analysis for deep hole investigations final report received from GSMB.</li> <li>▪ Geological Data Report for Bowatenna Tunnel 2 has been completed</li> <li>▪ Preparation of Basic Information Questionnaire (BIQ) is completed and submitted to PMU in July 2020 to submit CEA to receive Terms of Reference (ToR) to initiate EIA process</li> </ul>
NWPCP-6	Improvements to Wemedilla Reservoir and Right Bank Canal including power Houses	<ul style="list-style-type: none"> <li>▪ Designs in progress which is a new component added to NWPCP scope. This aspect also will be assessed under the EIA of NWPCP-5 package</li> </ul>

## 2 CHANGES IN PROJECT SCOPE AND ADJUSTED SAFEGUARD MEASURES

### 2.1 Package specific scope changes – updates to SAEMR # 07

14. An update of the identified scope changes and the corresponding actions taken is presented in **Table 2-1 in the NWPCP** area.

**Table 2-1: Updates of scope changes related to NWPCP during reporting period.**

Package	Change of scope	Adjusted Safeguard measures	Current Status
NCB 1	Exceeding completion time of the package	<ul style="list-style-type: none"> <li>Completion set with a strict deadline for the completion by November 2020, but the date extended to 2021</li> <li>As the contract is nearing completion, no significant environmental issues recorded.</li> <li>However, Contractor was advised to submit the revised "Site Restoration plan" based on the revised completion date</li> </ul>	Contractor has not yet submitted the revised restoration plan due to absence of an Environmental Officer/ Environmental Manager for the site / NEM head office
ICB 2	Additional RoW in the wildlife areas for construction (20+760 km to 22+300 km)	<ul style="list-style-type: none"> <li>PMDSC responded CSCEC through letter Ref. PMDSC-NWP Site/ICB 2/ CSCEC/0798 on 15 Jan 2020 explaining to use engineering alternatives to manage with the approved RoW indicating the significant impact that can be created by disturbing forest habitats in the sanctuary area.</li> <li>Joint inspection was made led by PD-PMU and the team on 13 March 2020 to understand the site situation, and CSCEC was informed by RE through letter Ref. PMDSC-NWP Site/ICB 2/ CSCEC/1057 on 09 April 2020 explaining the methodology to be adopted by CSCEC working with the limited RoW, which should be feasible with the existing geological conditions of the area</li> <li>However, the Contractor did not accept the proposal and hence Engineer studied possible options to provide minimum RoW. As per RE's directions PMDSC ES and EMS carried out an environmental screening on the proposed additional areas on 30 June 2020</li> <li>Screening conducted by EMS as per the revised MS Rev C submitted on 08 Aug 2020 for the entire 770 m stretch requested by CSCEC</li> </ul>	<ul style="list-style-type: none"> <li>Approval granted by FD on 20/11/2020 to use the area without tree felling (Ref.NWPCP/PIU/PD/ENV/ICB02/PMDSC (RE)/20/20 dated as 20.11.2020)</li> <li>Site clearing will be done in LHS only, and the site clearing to make the passage as O&amp;M road completed 50%</li> </ul>

Package	Change of scope	Adjusted Safeguard measures	Current Status
		<ul style="list-style-type: none"> <li>Submitted to PIU to proceed with the DWC/FD approvals on 19 Aug 2020 through RE</li> </ul>	
	CSCEC proposed construction of elephant fence (18+503 km to 18+955 km) blocking animal path in the sanctuary area and claimed for progress delay through letter Ref. CSCEC-ICB 2- PMDSC-1147 on 04 March 2020 and CSCEC-ICB 2- PMDSC-11201 on 20 March 2020	<ul style="list-style-type: none"> <li>The request was denied by PMDSC through letter Ref. PMDSC-NWP Site/ICB 2/ CSCEC/1027 on 30 March 2020</li> <li>As updated with the previous SAEMR no. 7, proposal to construct a new pond away from the construction area closer to the previous pond was approved by the DWC through letter WL/6/1/1/321 dated 08 November 2019 replacing existing water hole at 18+503 which is to be disturbed by construction work</li> </ul>	<ul style="list-style-type: none"> <li>The new pond construction is still pending</li> <li>Excavation of this area not approved by the Engineer until the previous section is completed and back-filled to facilitate animal movements</li> </ul>
	new/additional crossing structures proposed inside wildlife area and at the paddy areas where feeder canals were blocked to facilitate stream flow during operation phase	<ul style="list-style-type: none"> <li>8+200, 8+330, 8+395 &amp; 10+235km: New irrigation canal overcrossings</li> <li>12+822 km: New irrigation canal undercrossing</li> <li>20+990 &amp; 21+306 km: New drainage undercrossing</li> </ul>	<ul style="list-style-type: none"> <li>Designs completed and informed Contractor</li> </ul>



### 3 ENVIRONMENTAL MONITORING IN NWPCP

#### 3.1 Organizational set up for NWPCP Environmental Monitoring & Reporting

15. The Resident Engineer (RE) appointed for each NWPCP contract package under the PMDSC assumes primary responsibility for ensuring the implementation of Contractor's Environmental Management Plan (CEMP) through the respective contractor. The relevant required actions will be guided by the ES and EMS of PMDSC.

16. The environmental monitoring of the all NWPCP packages, including review of Method Statements, attending relevant meetings, and all package-specific additional surveys on active and future packages under NWPCP are handled by the EMS of PMDSC located in the CRE office - Dambulla. In addition, overall guidance for the contractor's Environmental Officer (EO) to identify issues through self-monitoring, attending to required mitigation measures, obtaining required license and approvals, awareness and training for the environmental related aspects are handled by the EMS under the coordination and assistance by the ES- PMDSC.

17. The environmental issues, non-compliance status observed by EMS during routine site monitoring, as well as through the public complaints, are informed to the RE for the duly communication to the Contractor to attend required corrective actions with the guidance of EMS and ES of PMDSC.

18. The Contractor is guided to implement required mitigation measures in the updated EMP for the generic environmental issues, and for the site-specific issues comments are made on the submitted Method Statements (MS), Environmental Incident Reports (EIR), Non-Compliance Report (NCR), and through letters. In addition, periodical environment meetings, joint inspections are being used to deliver verbal instructions where necessary by PMDSC, PIU and PMU.

19. The key meetings, inspections and surveys carried out by the EMS and ES PMDSC related to NWPCP are summarized in the Table 3-1.

**Table 3-1: Key meetings, stakeholder consultations and joint inspections attended by the environmental team of PMDSC, PIU and PMU related to NWPCP.**

Works	Dates			Remarks
	ICB 2	NCB 1	ICB 1	
July 2020				
Monthly Progress Review Meeting	10 <sup>th</sup>			
Site Meeting	24 <sup>th</sup>			
Site Inspections	2 <sup>nd</sup> , 4 <sup>th</sup> , 8 <sup>th</sup> , 9 <sup>th</sup> , 12 <sup>th</sup> , 18 <sup>th</sup> , 21 <sup>st</sup> , 22 <sup>nd</sup> , 23 <sup>rd</sup> , 27 <sup>th</sup> , 28 <sup>th</sup> , 29 <sup>th</sup> , 30 <sup>th</sup>	2 <sup>nd</sup> , 4 <sup>th</sup> , 8 <sup>th</sup> , 15 <sup>th</sup> , 22 <sup>nd</sup> , 27 <sup>th</sup>		
Joint Site Inspections	14 <sup>th</sup>			With ES-PMU, SEO-PIU, HSO-PMDSC, EO-CSCEC
Joint Site Inspections		14 <sup>th</sup>		With ES-PMU, SEO-PIU, HSO-PMDSC
Special Site Inspections			11 <sup>th</sup>	PMDSC relevant staff with DWC and PIU
Grievance Meeting	23 <sup>rd</sup>			With PIU, contractor relevant staff, GN-Aluthwewa & Community regarding Aluthwewa-imihaminegama road issue and other road issues, environment issues specially siltation of Dehigaha Ela due to stockpile at RHS of 18+300km.

Works	Dates			Remarks
	ICB 2	NCB 1	ICB 1	
	29 <sup>th</sup>			With PIU, contractor relevant staff, GN-Ranwediya & Community regarding ground water depletion of the surrounding area due to outlet portal construction of Ranwediya tunnel.
Other Meetings & Works	13 <sup>th</sup>			Grievance Meeting with RE NWPCP ICB 2, SEO-PIU, RO-PIU, PM, DPM, EO of CSCEC
	20 <sup>th</sup>			Special meeting with PD-PMU & staff including ES, DPD-PIU NWPCP, RE-ICB2 NWPCP, TL PMDSC & staff, PM & DPM-CSCEC & CSCEC Head office staff
	21 <sup>st</sup>			Special meeting with RE-ICB2 NWPCP & staff, PM & DPM CSCEC regarding construction in DWC/FD area 2.
	30 <sup>th</sup>			Special meeting on EHS with ES PMU, PD-PIU, SEO-PIU, RE-ICB 2 NWPCP, HSO-PMDSC, PM, DPM, EO, SO, HO of CSCEC.
Training and Awareness	30 <sup>th</sup>			With Wildlife Range officer of DWC Pi-bidunagama office, EHS manager, EO and TO of CSCEC for workers working inside DWC/FD area 1.
<b>August - 2020</b>				
Monthly Progress Review Meeting				
Site Meeting	4 <sup>th</sup>			
Site Inspections	1 <sup>st</sup> , 2 <sup>nd</sup> , 4 <sup>th</sup> , 8 <sup>th</sup> , 10 <sup>th</sup> , 12 <sup>th</sup> , 15 <sup>th</sup> , 16 <sup>th</sup> , 17 <sup>th</sup> , 18 <sup>th</sup> , 21 <sup>st</sup> , 23 <sup>rd</sup> , 24 <sup>th</sup> , 25 <sup>th</sup> , 26 <sup>th</sup> , 28 <sup>th</sup> , 31 <sup>st</sup>	1 <sup>st</sup> , 8 <sup>th</sup> , 17 <sup>th</sup> , 24 <sup>th</sup> , 31 <sup>st</sup>		
Joint Site Inspections	16 <sup>th</sup>			With DPM-Environment (Mr. Hao), HSE Manager (Mr. Hung)
	18 <sup>th</sup>			With IEMS (Mr Attygalle), HSO-PMDSC, DPM-Environment (Mr. Hao), HSE Manager (Mr. Hung)- EO, SO
Special Site Inspections				
Grievance Meeting				
Other Meetings & Works	12 <sup>th</sup>			Meeting with GN Ranwediya and offices of community water supply project with the participation of PIU staff, RE office staff, HSO to discuss permeant or long-term solution for groundwater depletion in the Ranwediya GN near outlet tunnel portal.
	19 <sup>th</sup>			Meeting with IEMS (Mr. Attygalle), SEO-PIU, HSO-PMDSC, DPM (Mr. Lee), DPM env (Mr. Hao), HSE manager (Mr. Hung), EO, SO Meeting with IEMS (Mr. Attygalle) & ES-PMDSC
	15 <sup>th</sup>			Ecological screening of required additional lands within the DWC/FD area 2, between Ch. 21+360km to 21+520km.

Works	Dates			Remarks
	ICB 2	NCB 1	ICB 1	
Training and Awareness	17 <sup>th</sup>			With ES-PMDSC for EO at CRE office
<b>Sept 2020</b>				
Monthly Progress Review Meeting	11 <sup>th</sup>	3 <sup>rd</sup>		
Site Meeting				
Site Inspections	1 <sup>st</sup> , 3 <sup>rd</sup> , 5 <sup>th</sup> , 8 <sup>th</sup> , 10 <sup>th</sup> , 14 <sup>th</sup> , 15 <sup>th</sup> , 16 <sup>th</sup> , 19 <sup>th</sup> , 21 <sup>st</sup> , 23 <sup>rd</sup> , 25 <sup>th</sup> , 27 <sup>th</sup> , 28 <sup>th</sup>	1 <sup>st</sup> , 5 <sup>th</sup> , 10 <sup>th</sup> , 16 <sup>th</sup> , 23 <sup>rd</sup> , 27 <sup>th</sup>		
Joint Site Inspections				
Special Site Inspections				
Grievance Meeting				
Other Meetings & Works	2 <sup>nd</sup>			Meeting with new RE (ICB 2-NWPCP) together with ES (PMDSC), SEO (PIU-NWPCP) regarding environment safeguard.
	21 <sup>st</sup>			Meeting with RE (ICB 2-NWPCP), ES (PMDSC), HSO (PMDSC), SEO (PIU-NWPCP), DPM, EO, SO of CSCEC regarding MS of new BP.
	24 <sup>th</sup>			Meeting with DWC Colombo regarding working arrangement for ICB 1 and ICB 2
	29 <sup>th</sup>			Review session on environment, health, and safety performance of MWSIP
Training and Awareness				
<b>Oct 2020</b>				
Monthly Progress Review Meeting				
Site Meeting				
Site Inspections	1 <sup>st</sup> , 3 <sup>rd</sup> , 5 <sup>th</sup> , 6 <sup>th</sup> , 9 <sup>th</sup> , 10 <sup>th</sup> , 13 <sup>th</sup> , 15 <sup>th</sup> , 17 <sup>th</sup> , 20 <sup>th</sup> , 22 <sup>nd</sup> , 23 <sup>rd</sup> , 24 <sup>th</sup> , 26 <sup>th</sup> , 27 <sup>th</sup> , 28 <sup>th</sup> , 29 <sup>th</sup>	3 <sup>rd</sup> , 10 <sup>th</sup> , 15 <sup>th</sup> , 22 <sup>nd</sup> , 28 <sup>th</sup>		
Joint Site Inspections	28 <sup>th</sup>			With ES (PMDSC), SEO (PIU-NWPCP), EO (CSCEC)
Special Site Inspections			9 <sup>th</sup>	Visit NWPCP ICB 1 with PIU, PMDSC, DWC officers
Grievance Meeting	20 <sup>th</sup>			With PIU, contractor relevant staff, GN-Andagala & Community regarding several issues (Ground water depletion, House cracks & fly rocks due to blasting, Issues with blasting time, Road damage, Additional lands beyond RoW, Blockage of field canals) due to Nilagama tunnel outlet portal construction activities.
Other Meetings & Works	9 <sup>th</sup>			Meeting with PM (CSCEC) together with DWC offices (Mr. Manjula - Director, Mr. Shantha - AD North-western Region), PD (PIU-NWPCP), RE (ICB 2-NWPCP), ES (PMU), ES (PMDSC), SEO (PIU-NWPCP) regarding

Works	Dates			Remarks
	ICB 2	NCB 1	ICB 1	
				CSCEC's violation of DWC's conditional approval (worked after 6 pm in the wild-life sanctuary area)
			27 <sup>th</sup> , 29 <sup>th</sup>	Tree survey in DWC area of ICB 1 roads
Training and Awareness				
<b>November 2020</b>				
Monthly Progress Review Meeting	12 <sup>th</sup> (Online)			
Site Meeting				
Site Inspections	2 <sup>nd</sup> , 3 <sup>rd</sup> , 5 <sup>th</sup> , 6 <sup>th</sup> , 7 <sup>th</sup> , 10 <sup>th</sup> , 11 <sup>th</sup> , 13 <sup>th</sup> , 14 <sup>th</sup> , 17 <sup>th</sup> , 19 <sup>th</sup> , 20 <sup>th</sup> , 25 <sup>th</sup> , 26 <sup>th</sup> , 27 <sup>th</sup> , 28 <sup>th</sup>	7 <sup>th</sup> , 10 <sup>th</sup> , 17 <sup>th</sup>		
Joint Site Inspections	6 <sup>th</sup>			With SEO (PIU-NWPCP) and EO (CSCEC)
	26 <sup>th</sup>			With SEO (PIU-NWPCP), ARE (PMDSC), PM & EO (CSCEC) regarding additional lands in the DWC 2 area.
Special Site Inspections			23 <sup>rd</sup>	Visit NWPCP ICB 1 area with ACRE, ES, SEO
Grievance Meeting				
Other Meetings & Works	4 <sup>th</sup>			ADB safeguard meeting (Online)
	3 <sup>rd</sup> , 5 <sup>th</sup> , 6 <sup>th</sup> ,			Tree survey in DWC area of ICB 1 roads
Training and Awareness				
<b>December 2020</b>				
Monthly Progress Review Meeting	14 <sup>th</sup>			
Site Meeting				
Site Inspections	1 <sup>st</sup> , 2 <sup>nd</sup> , 3 <sup>rd</sup> , 4 <sup>th</sup> , 7 <sup>th</sup> , 10 <sup>th</sup> , 11 <sup>th</sup> , 15 <sup>th</sup> , 17 <sup>th</sup> , 20 <sup>th</sup> , 22 <sup>nd</sup> , 23 <sup>rd</sup> , 28 <sup>th</sup> , 30 <sup>th</sup>	4 <sup>th</sup> , 11 <sup>th</sup> , 20 <sup>th</sup> , 23 <sup>rd</sup> , 30 <sup>th</sup>		
Joint Site Inspections	5 <sup>th</sup>	5 <sup>th</sup>		With IEMS (Mr Attygalle), EO
Special Site Inspections			9 <sup>th</sup>	Field visit NWPCP ICB 1 with PMU, PIU, PMDSC and CAMC
Grievance Meeting				
Other Meetings & Works	24 <sup>th</sup>			With ACRE, RE & staff, PM, DPM, EO of CSCEC regarding Ranwediya road
	17 <sup>th</sup>			Meeting with REs of NWP NCB 1 and ICB 2 to discuss overall progress, EHS issues
Training and Awareness				

## 3.2 Monitoring Records in NWPCP-NCB-1 and ICB-2 (July to December 2020)

20. The following sections summarize the Contractor's environmental safeguard compliance status as per the monitoring records of the PMDSC during EMS/ES monitoring visits, and meetings held with the Contractor's representatives.

### 3.2.1 NWPCP-NCB-1

21. No significant environmental issues were recorded in NCB-1 area during the reporting period. The general environmental issues reported during the reporting period are listed in Table 3-2 below with the corrective actions proposed/completed.

22. Some environmental issues like soil erosion and siltation issues were considerably reduced by end of reporting period mainly as a result of turfing along the canal but still there is a risk and turfing needs to be completed. The Contractor states that the delay in completing turfing is because of the difficulty of turf material supply as the tanks are filled with water.

**Table 3-2: Site-specific environmental issues recorded in NWPCP-NCB-1 during the reporting period**

Issue & Description	Note / Recommendation	Progress by the Contractor
<b>Dust</b>		
<ul style="list-style-type: none"> <li>Dust observed in the site during dry and windy weather conditions, and NEM does not properly and regularly/ consistently sprinkling or apply water.</li> </ul>	<ul style="list-style-type: none"> <li>NEM was advised to attend to watering / sprinkling properly and regularly / consistently during dry weather conditions, adopting appropriate techniques.</li> </ul>	<ul style="list-style-type: none"> <li>Watering attended but not in a frequent manner</li> </ul>
<b>Cement Wastes</b>		
<ul style="list-style-type: none"> <li>Cement wastes were observed at some places in the construction area due to washing of cement truck mixers.</li> </ul>	<ul style="list-style-type: none"> <li>It was directed to clean up all cement wastes at the Site, immediately stop cement truck mixers washing at the site and provide awareness to use designated places in the batching plant area.</li> </ul>	<ul style="list-style-type: none"> <li>Attended required corrective actions within weeks' time</li> </ul>
<b>Soil Erosion and Siltation</b>		
<ul style="list-style-type: none"> <li>Some soil erosion areas can be seen along the canal and at the coffer dam at new sluice construction site.</li> <li>Soil erosional risk at coffer dam at new sluice construction site will be high in next rainy season.</li> <li>There are lot of soil in the canal and there is a high risk of siltation with the water issue.</li> </ul>	<ul style="list-style-type: none"> <li>Turfing has been done which helped to reduce erosion significantly in the site.</li> <li>Further, it was discussed to attend to turfing, and establish erosion protection measures, prior to next rainy season.</li> <li>Further, it was suggested to remove coffer dam before next rainy season or pack sandbags along the dam to control erosion.</li> </ul>	<ul style="list-style-type: none"> <li>To minimize siltation with the water issue, Contractor established sandbag barriers across the canal before water issue to control siltation of agriculture lands and tanks with the soil aggregated on the canal bed.</li> <li>Turfing attended</li> <li>Implementing erosion control measures are not attended to a satisfactory level</li> </ul>

Issue & Description	Note / Recommendation	Progress by the Contractor
<b>Risk of Oil Contamination</b>		
<ul style="list-style-type: none"> <li>There is a risk of oil contamination with tank water of the Wemedilla tank due to stationed water pump on the coffer dam at new sluice construction site.</li> </ul>	<ul style="list-style-type: none"> <li>NEM was directed to take necessary measures to prevent possible contamination by covering the pump, placing pump on a platform to collect any leaking oil into a tray or by establishing soil hump around the pump.</li> </ul>	<ul style="list-style-type: none"> <li>Placing pump on a platform was attended, but the collection tray was not placed</li> </ul>
<b>Invasive Flora</b>		
<ul style="list-style-type: none"> <li>Invasive species, <i>Mimosa pigra</i> (Yodha Ninikumba / Giant Mimosa) can be observed on coffer dam at new sluice construction site and some places on the O&amp;M road.</li> </ul>	N/A	<ul style="list-style-type: none"> <li>Removal of invasive flora is attended to by the Contractor time to time but is not very effective as the species are spread over a significant area.</li> <li>PIU started a management program, but Contractor was also asked to take necessary measures to control Giant Mimosa spreading and to remove all bushes immediately within their construction areas.</li> </ul>

23. In **Table 3-3** some photographic evidence related to current environmental issues is displayed.

**Table 3-3: Photographic records of the NWPCP-NCB-1 area**

	
Spread of invasive species, <i>Mimosa pigra</i> (Yodha Ninikumba / Giant Mimosa) at new sluice (Sept 2020)	Spread of invasive species, <i>Mimosa pigra</i> (Yodha Ninikumba / Giant Mimosa) at canal downstream (Nov 2020)



	
<p>Oil leak from the stationed water pump on the coffer dam at new sluice construction site in Sept 2020.</p>	<p>The pump was placed on a platform</p>
	
<p>Soil erosion on canal banks (Nov 2020)</p>	<p>Soil erosion in new sluice area (Nov 2020)</p>
	
<p>Turfing along canal banks in Sept 2020</p>	<p>Deposited soil in canal bed</p>

### 3.2.2 NWPCP-ICB-2

24. Environment safeguard aspect of NWPCP-ICB-2 package is moderately satisfactory and the progress of attending to significant environmental issues is not much improved during the reporting period due to the lack of commitment by the Contractor's EHS team and financial constraints to attend to required mitigation measures by the Contractor (CSCEC).

25. There are 15 Environment Non-Compliance Reports (ENCRs) issued by the end of reporting period (Dec 2020), out of which 7 ENCRs (ENCR 5, 7, 9, 11, 12, 14 and 15) are not closed by completing the required corrective actions to the satisfaction of the Engineer. The open NCRs are related to poorly managed stockpiles, issues in the batching plant related to dust, noise etc. and stream blocking, erosion due to poor dewatering, cement waste issue.

26. All recommendations on the Environment Non-Compliance Reports 10 (ENCR 10) related to the release of cement mixed water from sedimentation tanks to the nearby stream was successfully addressed by the CSCEC and therefore ENCR 10 was closed in October 2020.

27. A summary of the issued E-NCRs during the reporting period from July to December 2020 is given in **Table 3-4**.

**Table 3-4: Records of E- NCR during the reporting period**

#	Issue	Date of Record	Corrective Actions taken and progress summary with the dates
i.	E-NCR No.013 (Ref. PMDSC-NWP-Site/ICB 2/CSCEC/1370 on 15.07.2020) - CSCE staff continued work after 6 PM till 7.30 PM night, with large number of workers, illuminating the area and making noises inside wildlife area violating Fauna Flora Protection Ordinance (FFPO) will harm the image of MWSIP.	13.07.2020	<ul style="list-style-type: none"> <li>▪ Immediately stopped work and following corrective actions were implemented:               <ul style="list-style-type: none"> <li>a) deducted payment for the work done after 6 pm inside DWC area on 13 July 2020 for not complying with contractual conditions.</li> <li>b) awareness training for the workers done with the participation of DWC as the Resource Person on 30 July 2020</li> </ul> </li> <li>▪ CSCSEC made aware on the same issue on 02.07.2020 through letter Ref. PMDSC-NWP-Site/ICB 2/CSCEC/1320, and the reason behind this issue was the delay of drying the concrete to complete power trawling. Hence, the RE instructed to CSCEC to try another mix design of the concrete and start the work early to avoid night-time work inside wildlife area.</li> <li>▪ This issue has been now solved and controlled, and most of the concrete work inside the wildlife area No. 1 is completed and backfilling continues.</li> </ul>
ii.	E- NCR No. 014 (Ref. Ref. PMDSC-NWP-Site/ICB 2/CSCEC/1528 on 19.08.2020): Several environmental issues due to construction activities within DWC sanctuary area 1 / FD protected area 1.		<ul style="list-style-type: none"> <li>▪ Following corrective actions were recommended and mostly completed by CSCEC:               <ul style="list-style-type: none"> <li>a) Established Electric fence and Small net fence, but no proper maintenance is attended.</li> <li>b) Desilted did not attend in the silted area of the tank that in the DWC/FD area with DWC participation.</li> <li>c) Soil erosion protection measures, and solid waste management was adopted to some extent.</li> </ul> </li> </ul>



#	Issue	Date of Record	Corrective Actions taken and progress summary with the dates
			d) Few sign boards were done, and the awareness training was held on 20 July 2020
iii.	E- NCR No. 015 (Ref. Ref. PMDSC-NWP-Site/ICB 2/CSCEC/1528 on 22.07.2020): instalment of 2 Water Tanks and the Pipeline on the Top of Rock at Nilagama Outlet Portal (Beyond the Approved Area for Construction) without relevant Approvals	22.07.2020	<ul style="list-style-type: none"> <li>EMS visited to verify the corrective actions, but the CSCEC had not implemented the actions to the satisfaction of the Engineer, and had continued with the same issue until the end of reporting period</li> </ul>

28. The summary of the environmental issues prevailing in the NWPCP-ICB-2 area are summarized in the **Table 3-5**, and the Contractor has been requested to submit a Corrective Action Plan (CAP) to rectify those long dragging issues.

**Table 3-5: Update of environmental compliance status observed during reporting period in NWPCP-ICB-2 construction area**

Issue & Description	Compliance status
<b>Cement Wastes</b>	
<ul style="list-style-type: none"> <li>ENCR No. 9 with was issued through Ref. PMDSC-NWP-Site/ICB 2/CSCEC/783 on 08.01.2020, and frequent follow ups were made by the Engineer to ensure that the corrective actions are implemented, but not up to a satisfactory level until Dec 2020.</li> <li>Cement waste disposed the public places, roadside due to overloaded cement truck mixers and washing of pump car.</li> <li>Community complaints for charging money for accepting cement waste / sludge by the villagers</li> </ul>	<ul style="list-style-type: none"> <li>CSCEC was directed to submit a realistic waste management plan, including stockpile, spoil dump etc and update the CEMP incorporating the same details as the waste management / spoil dumping has become a serious issue related to NWPCP ICB 2 contract under CSCEC, but so far not attended.</li> </ul>
<ul style="list-style-type: none"> <li>E- NCR No. 010 (Ref. PMDSC-NWP-Site/ICB2/CSCEC/857 on 31.01.2020) - Discharging water in the settling ponds / sedimentation tanks of the batching plant into the nearby natural water way (small stream) leading for water pollution and social unrest in the area.</li> </ul>	<ul style="list-style-type: none"> <li>This E-NCR was closed on 21.10.2020 (Ref. PMDSC-NWP-Site/ICB 2/CSCEC/1700) as CSCEC had attended the corrective actions recommended in the NCR No. 10 to a satisfactory level.</li> </ul>
<b>Batching Plant</b>	
<ul style="list-style-type: none"> <li>E-NCR No. 07 issued on 25.10.2019 related to the issues in the batching plant area mainly due to lack of proper wastewater and solid waste treatment and disposal arrangement, noise, dust issues and complaints from the neighbourhood</li> </ul>	<ul style="list-style-type: none"> <li>Several follow ups were attended by the Engineer, including Notice to temporary suspend batching plant operations due to causing public nuisance, repeated violation of CEA regulatory and EPL conditions, HS manual (Ref. PMDSC-CRE -NWP/ICB 2-CSCEC/010 on 08.02.2020)</li> <li>CSCEC made an improvement of batching plant operations, but the recommended actions were not fully attended until Dec 2020</li> </ul>
<b>Waste management</b>	
<ul style="list-style-type: none"> <li>Unmanaged solid, liquid waste in the construction area</li> </ul>	<ul style="list-style-type: none"> <li>Temporary arrangements adopted in several construction sections, but no solid plan.</li> </ul>





Issue & Description	Compliance status
	<ul style="list-style-type: none"> <li>CSCEC to submit the waste management plan considering overall NWPCP ICB 2 area</li> </ul>
<b>Stockpiles</b>	
<ul style="list-style-type: none"> <li>E-NCR No. 05 was issued on 01.10.2019 due to washing off the stockpiles</li> </ul>	<ul style="list-style-type: none"> <li>There are 25 stockpiles maintained by the CSCEC.</li> <li>This is a long dragging issue and CSCEC's poor attention on this issue already resulted serious environmental issues. There is a high risk of soil erosion, siltation during rainy conditions.</li> <li>The monitoring observation by EMS on stockpile maintenance and operation are as follows:               <ul style="list-style-type: none"> <li>Toe and silt traps of most of the stockpiles are not maintaining properly.</li> <li>No adequate mitigatory measures are taken as per the ENCR 5.</li> <li>Due to stockpile located RHS at 18+300km, the Dehigaha Ela and few water wells located adjacent to the Dehigaha Ela completely silted and there are public complains.</li> <li>Unauthorized stockpile operation observed at RHS of 12+350km and Kandabodayaya and paddy land near outlet portal of the Nilagama tunnel.</li> </ul> </li> <li>CSCEC is instructed to update the present status of stockpiles, disposal areas linked to the detail Waste/spoil management Plan</li> </ul>
<b>Stagnated Water in Excavated Area</b>	
<ul style="list-style-type: none"> <li>Stagnated water in the excavated canal sections, which is mainly a Health &amp; Safety issue</li> </ul>	<ul style="list-style-type: none"> <li>This is the most prominent issue which needs an engineering solution complying with Environment safeguard requirements such as safe dewatering arrangement with silt traps to avoid siltation, erosion, and blocking of existing drainage network.</li> <li>Contractor so far failed to provide an effective solution for this issue</li> </ul>
<b>Dewatering</b>	
<ul style="list-style-type: none"> <li>No adequate measures are taken to control siltation (silt traps) during dewatering.</li> </ul>	<ul style="list-style-type: none"> <li>Not successfully adopted dewatering following required environmental mitigation measures as per the approved MS and contract document</li> </ul>
<b>Blockage of Drainage Paths and Streams</b>	
<ul style="list-style-type: none"> <li>No adequate measures were taken to facilitate some drainage paths that cross the NWP ICB 2 canal, at about 14+800km (Walavuwela), etc.</li> <li>Due to access road to Kandabodayaya stockpile small waterway from nearby tank was blocked.</li> </ul>	<ul style="list-style-type: none"> <li>Not successfully adopted dewatering following required environmental mitigation measures as per the approved MS and contract document</li> </ul>
<b>Soil Erosion and Siltation</b>	
<ul style="list-style-type: none"> <li>Soil erosion areas can be seen in the RoW (in addition to stockpile areas).</li> <li>Stream or canal diversion or crossing sites at 10+080km, 12+430km (Bambaruwahana oya), 12+777km, 14+800km (Walavuwela Ela), 15+822km, excavated area inside the DWC/FD area</li> </ul>	<ul style="list-style-type: none"> <li>No adequate measures are taken to prevent or minimize soil erosion and siltation</li> </ul>

Issue & Description	Compliance status
1 & 2, at about 18+490km (Dehigaha Ela), at about 17+150km (Galapitagala Tank) soil erosion and siltation observed during site monitoring.	
<b>Blasting Works</b>	
<ul style="list-style-type: none"> <li>There are public complaints about noise, vibration and fly rocks due to blasting works at Andagala.</li> </ul>	<ul style="list-style-type: none"> <li>Fly rock issue at Nilagama Tunnel as emerged at the GRC meeting held on 20.10.2020. Following concerns were informed to the CSCEC through RE:               <ol style="list-style-type: none"> <li>Fly rocks had damaged a roof and dispersed in adjacent agriculture fields. Since community in the area attending land preparation, people complained that these rock pieces disturb their ploughing activities. The CSCEC was instructed to remove these particles, and it was attended immediately.</li> <li>CSCEC did not stick to a plan to finish blasting by 5 pm (which is the allowable time in the GSMB approval). As CSCEC continue their blasting after 5 pm, ppl in the area faced a difficulty of bringing their cattle back from feeding grounds, other work to attend in croplands etc. due to roadblocks impose while blasting. After several follow-ups by EMS, this issue also now controlled.</li> </ol> </li> <li>Fly rock issue, and control blasting maintaining Air Blast Over Pressure within CEA standards not addressed by the CSCEC. Strict control through Engineer and his team is emphasized</li> </ul>
<b>Public Roads used by CSCEC</b>	
<ul style="list-style-type: none"> <li>Public roads that are using by the CSCEC for construction purpose not maintaining properly.</li> <li>Dusts and mud on some parts of the Moragolla PRDA road.</li> <li>There are public complains.</li> </ul>	<ul style="list-style-type: none"> <li>Not successfully attended road maintenance on regular basis except dust control</li> </ul>
<b>RoW Issues &amp; Land Issues</b>	
<ul style="list-style-type: none"> <li>RoW is not clearly demarcated in most of the parts.</li> <li>Some construction related activities do not limit to the approved RoW and CSCEC use some lands beyond RoW without proper approval.</li> <li>CSCEC placed two water tanks on the Andagala rock without approval from PMDSC and landowner (FD).</li> </ul>	<ul style="list-style-type: none"> <li>Demarcating approved RoW is mostly attended, but gaps can be observed.</li> <li>Engineer strictly monitor to ensure that all construction related activities should be limited to approved RoW and if CSCEC need or using additional lands beyond approved RoW should need to have proper approval from the landowner signed as a try party agreement as directed by ADB and PMDSC.</li> </ul>
<b>Dust</b>	
<ul style="list-style-type: none"> <li>Cements and soils that deposited due to construction activities on the Moragolla PRDA road and other access roads used by CSCEC aggravate the dust issue and there are public complains during dry weather conditions.</li> <li>Some dust barricades in the residential areas are damaged or collapsed and not effective due to absence of periodical maintenance.</li> </ul>	<ul style="list-style-type: none"> <li>It was agreed by CSCEC to submit the dust management plan indicating the locations that needs dust barricades, watering plan etc. at the meeting held with CSCEC on 29.06.2020, but so far, no action taken</li> </ul>

Issue & Description	Compliance status
<b>Housekeeping and Sanitation</b>	
<ul style="list-style-type: none"> <li>No standard housekeeping and sanitation practices are following.</li> <li>Toilets in most of the areas (Ranwediya outlet tunnel portal, batching plant, etc.) are not up to the required hygienic conditions. Not clean. There are many complaints by workers that they cannot use because not clean and hygienic.</li> <li>Many dogs can be observed within the ROW, specially DWC 2 area and threatening to the wildlife.</li> </ul>	Immediate attention needed to rectify these issues which has been notified for last 6 months period

29. Photographic evidence to show the above issues, and some corrective actions taken by CSCEC are shown in **Table 3-6**.

**Table 3-6: Photographic evidence captured during the reporting period in NWPCP-ICB-2 area**

<b>Dust &amp; Dust Barricades</b>	
	
Dust barricades in the residential areas are damaged, some are collapsed and not effective due to no periodical maintenance by CSCEC.	
<b>Cement Wastes</b>	
	
Cement wastes can be observed most of the places in the construction area in and outside of the RoW due to washing of cement truck mixers and pump cars.	
<b>Site Cleaning</b>	



	
<p>No proper solid waste management plan is implementing in the site. Garbage, debris found inside and outside of the excavated areas, and outside of the RoW.</p>	
<p><b>Stockpiles</b></p>	
	
<p>Toe and silt traps of most of the stockpiles are not maintaining properly.</p>	
<p><b>Dewatering</b></p>	
	
<p>No adequate measures are taken to control siltation (silt traps) during dewatering.</p>	
<p><b>Soil Erosion and Siltation</b></p>	




	
DWC/FD area 1	DWC/FD area 2
	
Dehigaha Ela	Stream at 10+080km
<b>Batching Plant</b>	
	
Dusty floor	Garbage and debris



	
<p>Not properly, regularly or consistently apply water to the nearby PRDA road.</p>	<p>Spillage of wastewater from the drain at main gate to nearby PRDA</p>

Public Roads used by CSCEC.	
	
Dusts and mud on some parts of the Moragolla PRDA road.	
RoW Issues & Land Issues	
	
<p>RoW is not clearly demarcated in most of the parts.</p>	<p>Two water tanks on the Andagala rock without approval</p>



Recommended actions prior to start work inside wildlife areas.	
	
RoW washed into nearby tank- DWC/FD 1 area	Broken small mesh fence to be repaired
	
Arranging drainage at 19+ km area to facilitate water flow to the nearby tank	At around 8+ km area, ecological survey was conducted prior to select that land for a stockpile, and as a result <i>Polyalthia suberosa</i> (Native, Endangered) plant was recorded
	
Conducted awareness to the batching plant workers on EHS requirements on 02.12.2020.	Consultation of the community in the batching plant area





Joint visit with National Water Resources Board to investigate Ground water depletion issue at Ranwediya (Dec 2020)



Drinking water distribution by the Contractor in Ranwediya area for the affected families

### 3.3 Public Grievances on Environmental Matters

30. Public grievances related to land matters, and construction related aspects are mainly handled by the PIU-NWPCP, holding Grievance Redress Committee Meetings (GRCM) periodically. In addition, the contractor is maintained a Grievance Log related to Environmental related matters.

31. There are no such records available under the NWPCP NCB 1 contract due to nearing completion of the package. The Public grievances recorded by the NWPCP-ICB 2 contractor is given under Annex 1, indicating the present status of attending corrective measures.

### 3.4 Health & Safety Highlights for the Reporting Period

32. Health & safety (H&S) aspects are covered by the focal point for H&S based in CRE office oversee all active packages under MWSIP, Dambulla, and one H&S Officer based in RE office of NWPCP-ICB-1 under PMDSC focusing on construction monitoring of NWPCP active packages,

33. There were no any Covid 19 positive cases reported during the reporting period in NWPCP area, and hence there was no requirement of closing the site.

34. **Table 3-7** summarizes the key issues and corrective measures attended for the reporting period in NWPCP area, and the preventive measures adopted for Covid 19. However, precautionary measures were continued and close supervision was carried out including arranging random PCR tests for the contractor's and Engineer's staff on priority vulnerable basis.

**Table 3-7: H&S Highlights related to NWPCP during the reporting period**

Package	Accident /incident observed	Corrective actions/recommendations.
NWPCP-ICB-2	Two accidents happened in ICB 2 site:	a. Accidents in ICB 2 have been investigated and precautionary measures as below, have been

Package	Accident /incident observed	Corrective actions/recommendations.
	<p>(i) One truck mixture driver has been fallen from top of the truck while attending for cleaning. He was recovered after the Hospital treatments.</p> <p>(ii) Two workers got and electrical shock when the pump car touched with an overhead power line.</p> <p>Above two victims have been admitted in the Hospital and recovered after treatments.</p>	<p>applied to prevent recurrences of same.</p> <ul style="list-style-type: none"> <li>• Awareness training on safe working procedures.</li> <li>• USE of necessary PPE.</li> <li>• Increase regular supervision.</li> <li>• Awareness training to operators and workers on safe positioning and Safe working with machineries.</li> </ul> <p>b. Awareness sessions on Covid 19 have been conducted with the participation of MOH &amp; PHI.</p> <p>c. Site inspections in respecting COVID 19 have been conducted with the participation of MOH.</p> <p>d. Regular site safety inspections have been conducted by PMDSC and issued instructions in writing and followed up the rectifications.</p> <p>e. Monthly vehicle and machinery inspection have been conducted.</p>

## **4 PLANNED ACTIVITIES FOR NEXT SEMESTER (JANUARY – JUNE 2021)**

35. The key activities in addition to the routine contract management and supervision activities under Task 3, under the PMDSC for next semester will include following:

- (i) BIQ for Bowatenna Tunnel 2 and improvements to Wemedilla Reservoir (NCP-5 and 6) will be submitted to CEA and upon the receipt of Terms of Reference (ToR), EIA/IEE process will be started.
- (ii) Habitat restoration of NWPCP-ICB-2 area followed by the backfilling will be initiated.
- (iii) Baseline environmental quality monitoring of NWPCP-ICB-1 area will be implemented.
- (iv) Reforestation work and other relevant conditions given by DWC related to NWPCP-ICB-1 package will be implemented.
- (v) Completion report for the NWPCP-ICB-1 package will be prepared.

## **Annex 1: Public grievances recorded by the NWPCP-ICB-2 Contractor**



# PUBLIC COMPLAINTS REGISTER - NWPCP ICB 02

No	Description	Date of Complaint	Chainage	Name of Complainant	Location/Address	Contact Number	Action Taken Date	Action Taken	Current Status		
									Solved	On Progress	Not Solved
1	Dust problem due to construction works of NWPCP Canal	27.03.2018	Pahala Bambawa	Mr.W.M.Lahiru Dilshan	No.459 A,Bogasyaya,Pahala Bambawa			Construction works yet to start at this location. Solution will be offered when constructions begin.			
2	The house is located about 6 feet away from the Canal boundary and focuses on impact events during construction works in progress	15.11.2018	Pahala Bambawa	Mr.N.W.D.Nanayakkara	Pahala Bambawa, Galewela			It was explained that the construction work is being carried out with minimum impact on the house. Prior to the commencement of the construction works the impact on the houses will be examined and it was explained that further action would be taken accordingly			
3	There is a problem with the dust due to NWPCP Canal construction works	31.03.2019	Pibidunugama	Mr.Susanatha Dodangolla	Kurushi Lanka Stores,Korakahagolla			Provided a dust fence to solve the issue			
4	There is a problem with the dust due to NWPCP Canal construction works	04.04.2019	Aluthwewa	Mr.Leonard	Aluthwewa, Bambaragaswewa			Issue was discussed at the Monthly Progress Review Meeting and CSCEC agreed to provide a dust barrier. And it was provided			
5	Walls of the house owned by the complainant was cracked due to construction works of NWPCP - Canal	23.04.2019	17+000		Aluthwewa,Bambaragaswewa			CSCEC has arranged a temporary house for the family to stay on as it is difficult to stay at their house.			
6	Under MWSIP Programme it was decided to Open elephant fence, Construction of security guards with all facilities, Rectify existing elephant fence before the start of construction works within Wildlife Area. Above decisions were taken at MWSIP Inaugural Meeting. Due to this reason villages of Kalugala,Maningamuwa,Bambaragaswewa,Pibidunugama,Korakahagolla,Aluthwewa have faced threat of wild elephants. Matter was conveyed to PD - PMU through a letter on 01.07.2019	08.07.2019	Kalugala, Maningamuwa, Bambaragaswewa, Pibidunugama, Korakahagolla, Aluthwewa villages	DWC Range Office,Kurunegala.	Department of Wildlife Range Office, No.27/1,Gattuwaana,Kurunegala			Both ICB 01 and ICB 02 Packages have to solve this problem. A meeting was held at DWC Head Office and solutions for above issues were discussed and decisions were arrived.Security huts are arranged.			
7	Due to construction activities of NWPCP Canal, water level depletion observed in Complainant's agricultural well. Requested to increase the depth of the well using an excavator from CSCEC	10.08.2019	Aluthwewa	Ms.A.K.Amarasinghe	Aluthwewa,Bambaragaswewa, Galewela			CSCEC has dug the well for more depth.Due to prevailing rains water level has reached a high level. Only a temporary solution.			
8	Due to construction activities of NWPCP Canal, water level depletion observed in Complainant's agricultural well. Requested to increase the depth of the well using an excavator from CSCEC	10.08.2019	Aluthwewa	Mr.M.K.G.Jayasinghe	Bambaragaswewa, Galewela			CSCEC has dug the well for more depth.Due to prevailing rains water level has reached a high level. Only a temporary solution.			
9	Problem of dust created by excavation works of NWPCP Canal	13.08.2019	Aluthwewa	Mr.T.A.Laxman Dissanayake	Churuch road,Aluthwewa, Bambaragaswewa			A joint Inspection at this place was held on and CSCEC was requested to rectify the situation			
10	Damages to roads and houses with cracks observed in general area of Kospotha, Aluthwewa and Korakahagolla due heavy construction vehicle traffic	22.08.20219	Aluthwewa	Mr.M.G.Indika Padmasiri and Villagers of Manahinda.	Bambaragaswewa			CSCEC agreed to repair and maintain all designated roads and other roads used by them. In Progress			
11	Cracks appeared in the house due to construction works of NWPCP - ICB 2 Canal	22.08.2019	Aluthwewa	Mr.R.M.S.Abeysinghe	No.240,Randana,Dambagolla Road,Galewela			CSCEC was requested to carry out repair works			
12	CSCEC has used the Complainant's land as an access road for their vehicle park and hence damaged the PVC water supply pipes which provided water to paddy field and damaged Aloe Vera plantation.	27.08.2019	Pibidunugama	Mrs.Seelawathie	Pibidunugama			CSCEC was requested to look in to this the matter and provide solutions asap.			
13	Cracks and damage to the parapet wall	09.09.2019	16+400km	Mrs.U.R.Nandawathi	340/2,Aluthwewa,Bambaragaswewa,Galewela	773375004	2020.09.19	The wall is in the ROW. The land should be cleared by the Employer. It was agreed to repair the damage if the land could not be able to clear by the Employer. Copy of letters to be attached by CSCEC in their relevant file. Employer said that this land is no need for construction works. According to that we have paid Rs.20,000.00 for Mr.Nalaka Sanjeewa for wall damages.			
14	Complainant informed about closure of his private well due to construction of NWPCP Canal. Requested funds to construct a new well.	17.09.2019	Aluthwewa	Mr.James Singho	Danduwaagolla,Bambaragaswewa, Danduwaagolla			Necessary arrangements are being made by the Land Acquisition Branch to provide a new well.			
15	Water in the well has run dry and amount of compensation payment is not enough	17.09.2019	Kospotha	Mr.R.H.A.Gunathunga, Podi Menike	Ranasinghe Niwasa,Kospotha,Beligamuwa			CSCEC has increased the depth of the well and water is available due to prevailing rain. Only a temporary solution			
16	Unauthorized removal of five (05 nos) coconut trees	25.09.2019	Ranwediya	Mr.Mohamed Maridu	Ranwediya,Galewela			Rs.75,000/= paid as compensation and settled the issue.			
17	Problem of agricultural well	03.10.2019	20+200km	Mrs.K.Renuka Bandara	Korakahagolla,Pibidunugama,Bambaragaswewa	702897545		Many times performed the dewatering of the agro well and clean the mud but owner did not satisfy with the work. We have done the best from our side. Currently we are providing the drinking water. CSCEC was asked to keep all records of their works.			
18	Problem of water well	05.10.2019	16+400km	Mr.W.T.Wickramasinha	Aluthwewa,Bambaragaswewa, Galewela	717181200		1. The well has been cleaned several times (more than 20 times) 2. The well was repaired on 20.10.2019 3. Drinking water was supplied continuously. 4. LKR 144,000/= was paid to build a new tube well as the land owner was not satisfied with any of the above given solutions.	Solved		
19	Damage to Cauliflower cultivation and siltation with mud in the land block.	07.10.2019	20+200km	Mr.P.M.Chanaka Nishantha Kumara	Korakahagolla,Bambaragaswewa, Galewela	762840321		LKR 70,000/= was paid on 14th October 2019 as compensation and the issue was solved			
20	Damage to Beet Root cultivation and siltation with mud in the land block.	11.10.2019	18+200km	Mr. B.M.Kapilarathna	51-B, Aluthwewa,Bambaragaswewa, Galewela			LKR 50,000/= was paid on 31st October 2019 as compensation and issue solved			
21	Problem of access road	10.12.2019	20+200km	Mrs.K.Renuka Bandara	Korakahagolla,Pibidunugama,Bambaragaswewa	702897545		Provided some concrete to make the road.			
22	Damage to paddy field	10.12.2019	20+200km	Mrs.K.Renuka Bandara	Korakahagolla,Pibidunugama,Bambaragaswewa	702897545		No objection as it is not cultivated.			
23	Problem of access road	11.12.2019	16+400km	Mr.P.R.Nalaka Sanjeewa	340/2, Aluthwewa,Bambaragaswewa, Galewela	773375004		The Access road is in ROW and road was inundated during construction. Dewatering was done and road was repaired using gravel and solved the issue.			



24	Damage to coconut plantation	24.01.2020	20+200km	Mrs.K.Renuka Bandara	Korakahagolla,Pibidunugama,Bambaragaswewa	702897545		No objection			
25	Contamination of canal water near the Batching Plant.	27.01.2020	Batching Plant Location.	Mrs P.G.Sarathchandraa	03rd Mile Post, Nilagama,Bambaragaswewa	774080260		The canal was washed using water bowser on 28 <sup>th</sup> January 2020 and solved the issue. Water quality of the stream also checked.			
26	Setting up of new concrete Batching Plant in Pibidunugama village area by CSCEC	03.02.2020	19+000 Km	Villagers	Pibidunugama			Said location has been changed and CSCEC has selected two new locations to setup Batching Plant no.02			
27	Washed away soil during rain from Canal construction has filled up the drinking water well	09.02.2020	20+200 Km	Mrs. K.Renuka Bandara	Korakagolla,Pibidunugama,Bambaragaswewa	702897545		Particular well was cleaned several times and the well was surrounded by soil and sandbag wall constructed to prevent filling up with mud water			
28	Requested to clean the well used for drinking water	12.03.2020		Mr.D.G.Susantha Wickramasinghe	Korakahagolla, Galewela			On several occasions this well was cleaned and a runoff preventing wall was constructed to protect the well			
29	Water pump was damaged due to agro well over flowing due to heavy rains	18.05.2020	15+200km	Mr.K.G.Jayawardena	Andagala,Walawwela,Bambaragaswewa	779559647		New water motor was bought and handed over. The problem was solved. Pump to be repaired.			
30	Stock piles soil washed away into the paddy field and sedimented	18.05.2020	Kospotha	Mr.K.W.Senadeera	Kospotha,Beligamuwa			CSCEC to solve the issue immediately			
31	Damage of dust barricades and dust problem occurred	19.05.2020	12+450km	Mrs.G.A.Somalatha	Katupotha,Bambaragaswewa	776056238		Dust barricade was maintained properly and solved the issue.Requested CSCEC to provide photographic evidence			
32	Possible damages to the house may occur due to blasting of rocks within canal trench	21.05.2020	Hombawa	Mrs.D.M.Dingiri Menike	Andagala,Bambaragaswewa			As a temporary solution 1000L water tank supplied on 2020.07.31 and we gave our confirmation to her, after we finish the constructions we will repair all the damages			
33	Problem of drinking water well	27.05.2020	12+500km	Mr.Kulathunga Adikari	Katupotha,Bambaragaswewa	716337588		Prepared a trench to prevent storm water in to the well and apply cement around the well to prevent some water in to the well			
34	Damage to coconut plantation	01.06.2020	16+450km	Mr.A.M.S.Gunathilaka	380/A,Korakahagolla,Bambaragaswewa	771969101		Discussed and decided to pay for a Stock Pile to be paid on 13th July 2020			
35	Damage to fence due to construction work	02.06.2020	17+000km	Mr. Yapa Bandara	Aluthwewa,Bambaragaswewa	774080260		The fence was repaired and solved the problem			
36	Chinese workers have used the surrounding land area for their conveniences	04.06.2020	Aluthwewa	Mr.K.G.G.Bandara	Egodayaya,Aluthwewa			CSCEC to provide toilets for workers			
37	Problem of temperery storm water canal prepared on the land of the Complainant	10.06.2020	18+200km	Mr. B.M.Kapilarathna	51-B Aluthwewa,Babaragaswewa, Galewela	729669125		The land was prepared for cultivations and solved. For the issue CSCEC was requested to provide photographic evidence before and after..			
38	Situation of the land of the Complainant soil accumulated from adjacent land block	10.06.2020	Pibidunugama	K.Daya Hemasiri	Korakahagolla, Pibidunugama			The land was prepared for cultivations and solved the issue.			
39	Damage of culvert due to transport	12.06.2020	17+000km	Mr. P.M.Samarakoon	Aluthwewa,Bambaragaswewa	772563810		Repaired the culvert by using hume pipes and solved. For the issue CSCEC was requested to provide photographic evidence			
40	Objection of villages in Ranwediya for well water level deduction	15.07.2020	9+000km	Ranwediya Villages	Ranwediya,Galewela			Held a special meeting at Ranwediya on 29.07.2020. As a tempory solution from 24th july to 31st of July water supply through Galewela Pradeshiya Sabawa and currently supply water through DS office.			
41	Dust problem due to access road use for Nilagama out portal	26.08.2020	Nilagama temple area	Y.Priyangika Lakmali Jayasuriya	Nilagama temple area	N/A	2020.08.31	Dust barrigades were constructed around the affected house and the school on 2020.08.31			
42	Damage for the road, due to truck mixture movements	26.08.2020	Nilagama temple area	Nilagama Villages	Nilagama temple area	N/A	2020.09.02	The damage culvert repaired by adding concrete blocks and concreet on 2020.09.02			
43	stock piles soil washed away into the paddy field and sedimented in to his well	28.08.2020	18+500	Nimal			2020.09.02	Using long arm excavator that well was excavated on 2020.09.02			
44	stock soil beyond the stockpile land area and some tree debries were put in to his land	2020.08.31	12+630	A.M.Kulathunga Adikari	No:401,Katupotha,Bambaragaswewa,Galewela	716337588	2020.10.15	Removed all the soil beyond the ROW and removed tree debries as per the request of the complainer. Also proper drainage system was constructed to mitigate the soil erosion			
45	Sriyanis land located nearby nilagama tunel out potal. She complain that CSEC has put soil beyond the ROW and she has requested to remove those soil from her land	2020.10.20	14+300	Sriyani Wasantha Kumari	Nawakawaththa,Bambaragaswewa,Galewela	070 4594563	2020.11.03	Soil beyond our ROW has been removed as per the request of the land owner			
46	Mr.Premarathna complained that he needs to cover the stockpile area by asbastose sheets, stop the vehical movements and etc	2020.10.05	16+450	S.K.Premarathna	No 138/1, Aluthwewa, Bambaragaswewa,Galewela	077 8183862	2020.10.05	Already arranged dust net to avoid the dust and three times watering for the road to reduce the dust generation. How ever the complainer not satisfied about those actions. But we are unable to fulfill his requirements hence its not practical. Furthermore there's no duct generation from the stockpile.			
47	Beetroot cultivation was damaged by the elephants. The complainer think these elephants came to the village due to our construction activities	2020.10.20	Close by the 20+ area	H.P.Anusha Priyadarshani	Korakahagolla, Bambaragaswewa,Galewela	077 4822760		Mr.Hao agreed to give some donation for the complainer			
48	Cracks occurred at the house walls due to blasting vibrations	2020.10.29	14+300	M.G.Karunawathi	No 122, Adagala,Bambaragaswewa,Galewela		0				
49	Cracks occurred at the house walls due to backfilling vibrations	2020.11.03	17+900	S.Gunarathne			2020.11.03	The house was inspected and so many cracks were identified. However before starting the backfilling crack survey was done. Hence we gave our conformation for the complainer, after we finished the constructions we will take the necessary actions			
50	Ranwediya villages have been complained that due to our construction activities natural drainages were blocked and storm water flew through their houses	2020.11.06	Close by the Ranwediya Tunnel	Ranwediya Villages	N/A	N/A	2020.11.06	All the drainages around the tunnel arca was cleaned and cut more deeper to store more water. Then all those drainages were directed to a natural stream. After that all storm water has been flew accordingly and villages were happy about that			
51	The feeder canals blocked due to our canal and farmers need to re-arrange the canals for starting the cultivations	2020.11.12	10+00	Ranwediya Villages	N/A	N/A	2020.11.12	we have re-arranged the feeder canals and conect the both sides and supplied water for the farmers			
52	Villages near by the Nilagama temple have complained that rainfall runoff water has been flew through their houses and they requested to clean the drainages	2020.11.19	close by the nilagama temple	Nilagama Villages	N/A	N/A	2020.11.19	we have cleaned the drainages and arraged the storm water path			
53	Villages have been complained near by 13+ area regarding the night time work at the site.	2020.11.26	13+	Mr.Jayasooriya	Katupotha,Bambaragaswewa	N/A	2020.11.27	The environmental consultant has been stoped the night work and not allowed to further disturbance for the villages			
54											