

# Semi-Annual Environmental and Social Safeguards Monitoring Report

---

#1 Semi-annual Report  
October 2018

## VAN: Cyclone Pam School Reconstruction Project

Prepared by Ministry of Education and Training for the Government of Vanuatu and the Asian Development Bank.

This environmental and social safeguards monitoring report is a document of the borrower. The views expressed herein do not necessarily represent those of ADB's Board of Directors, Management, or staff, and may be preliminary in nature.

In preparing any country program or strategy, financing any project, or by making any designation of or reference to a particular territory or geographic area in this document, the Asian Development Bank does not intend to make any judgments as to the legal or other status of any territory or area.

# Semi-annual Environmental and Social Safeguards Monitoring Report

---

Reporting period: January to June 2018

## **Republic of Vanuatu: Cyclone Pam School Reconstruction Project**

(Financed by the Japan Fund for Poverty Reduction and Managed by the Asian Development Bank)

PREPARED FOR:

MINISTRY OF EDUCATION AND TRAINING, PORT VILA VANUATU

**03 October 2018**

Document Number: 16116V BAEMR REP1 Q2-2018

Revision B

Kramer Ausenco Project No. 16116V

ADB Grant no. 9181 VAN

# Semi-annual Environmental and Social Safeguards Monitoring Report

---

## TABLE OF CONTENTS

1	Revision Status .....	22
2	Issue Status.....	22
3	Copyright .....	22
1	Part I - Introduction.....	4
1.1	Construction activities and project progress during the previous 6 months .....	4
1.2	Changes in project organization and environmental management team .....	4
1.3	Relationships with contractors, owner, lender, etc.....	7
1.4	Close-out of Vanuatu Safeguard Systems for Pre-construction phase.....	7
2	Part II - Environmental Monitoring .....	8
3	Part III – Social Monitoring .....	8
4	Part IV – Land .....	9
5	Part V - Environmental Management .....	9
5.1	The environmental management system (EMS), Construction EMP (CEMP), and work plans.....	9
5.2	Site inspections and audits .....	9
5.3	Non-compliance notices .....	10
5.4	Corrective action plans .....	10
5.5	Consultation and complaints.....	10
6	Part IV – Action Plan for the Next Period .....	12
7	ANNEXES: .....	13
8	Annex 1: Journey Times on TANNA.....	13
9	Annex 2: Schematics of School Sites.....	14
10	Annex 3: Attendance at the Safeguards and CEMP Trainings.....	18
11	Annex 4: Photographs.....	20

## TABLES

Table 1: Closeout of Safeguards documentation .....	7
Table 2: Status of Environmental Documentation.....	9
Table 3: Grievance Redress Mechanism - Activity in the January to June 2018 Reporting Period.....	11
Table 4: Training carried out in the reporting period .....	11

## FIGURES

Figure 1: Location of the Four School Sites on Tana Island .....	4
Figure 2: Interaction between stakeholders involved in the project.....	6
Figure 3: Flow chart for the Grievance Redress Mechanism .....	11
Figure 4: Location of project elements and travel times (May 2018).....	13
Figure 5: Schematic of existing Kwataparen JSS .....	14
Figure 6: Schematic of existing Lowiepeng JSS .....	15
Figure 7: Schematic of existing Ineaula JSS.....	16
Figure 8: Schematic of existing Imaki JSS .....	17
Figure 9: Kramer Ausenco and MoET team who attended the CEMP training on 1/06/18. ....	18
Figure 10: CCECC and Kramer Ausenco team who attended the CEMP training on 19/06/18. ....	19
Figure 11: CEMP training by Mr. Taylor (in blue) to Kramer Ausenco and MoET team.....	20
Figure 12: CEMP training (via skype) by Mr. Taylor for China Civil Engineering Construction Corporation .....	21

## Abbreviations

ADB	Asian Development Bank	The Funding Supervision Agency
CC	Construction Contractor (China Civil Engineering Construction Corporation South Pacific Limited)	The Construction Contractor
CEMP	Construction Environmental Management Plan	CC Generated Document
DSC	Design Supervision Consultant - Kramer Ausenco (Vanuatu) Ltd.	The Supervision Consultant
DEPC	Department of Environmental Protection and Conservation	
EMP	Environmental Management Plan	Contained in project IEE
EO	Environmental Officer	
ERP	Emergency Response Plan	
GRM	Grievance Redress Mechanism	
HSP	Health and Safety Plan	
IEE	Initial Environmental Evaluation	The Environmental Impact document for the project
IES	International Environmental Specialist	
JFPR	Japan Fund for Poverty Reduction	Funding Source
NES	National Environmental Specialist	
MoET	Ministry of Education and Training	The Implementing Agency
PIU	Policy Implementation Unit	Implementation Unit of the Implementing Agency
WMP	Waste Management Plan	
END		

# 1 Part I - Introduction

## 1.1 Construction activities and project progress during the previous 6 months

1. There has been no construction work during the reporting period but the Design Supervision Consultants (DSC) has been appointed, Kramer Ausenco (Vanuatu) Ltd. The DSC have prepared designs and contract documentation for the works and on the instruction of the Implementing Agency (IA), the Ministry of Education and Training (MoET) have invited tenders for the work. Tenders have been received and the Construction Contractor (CC), China Civil Engineering Construction Corporation South Pacific Limited (CCECC) has been engaged.
2. The project is being implemented to repair school buildings on the Island of Tanna damaged as a result of the impact of Cyclone Pam<sup>1</sup> in (2015). Four schools<sup>2</sup> have been selected for repair and upgrading. The upgrading work is designed to provide structures that would withstand any future natural disaster and provide safe accommodation for people affected by a future natural disaster. The location of the four schools on Tanna Island is indicated in the following figure.



Figure 1: Location of the Four School Sites on Tana Island

Source: Google Earth 2018

## 1.2 Changes in project organization and environmental management team

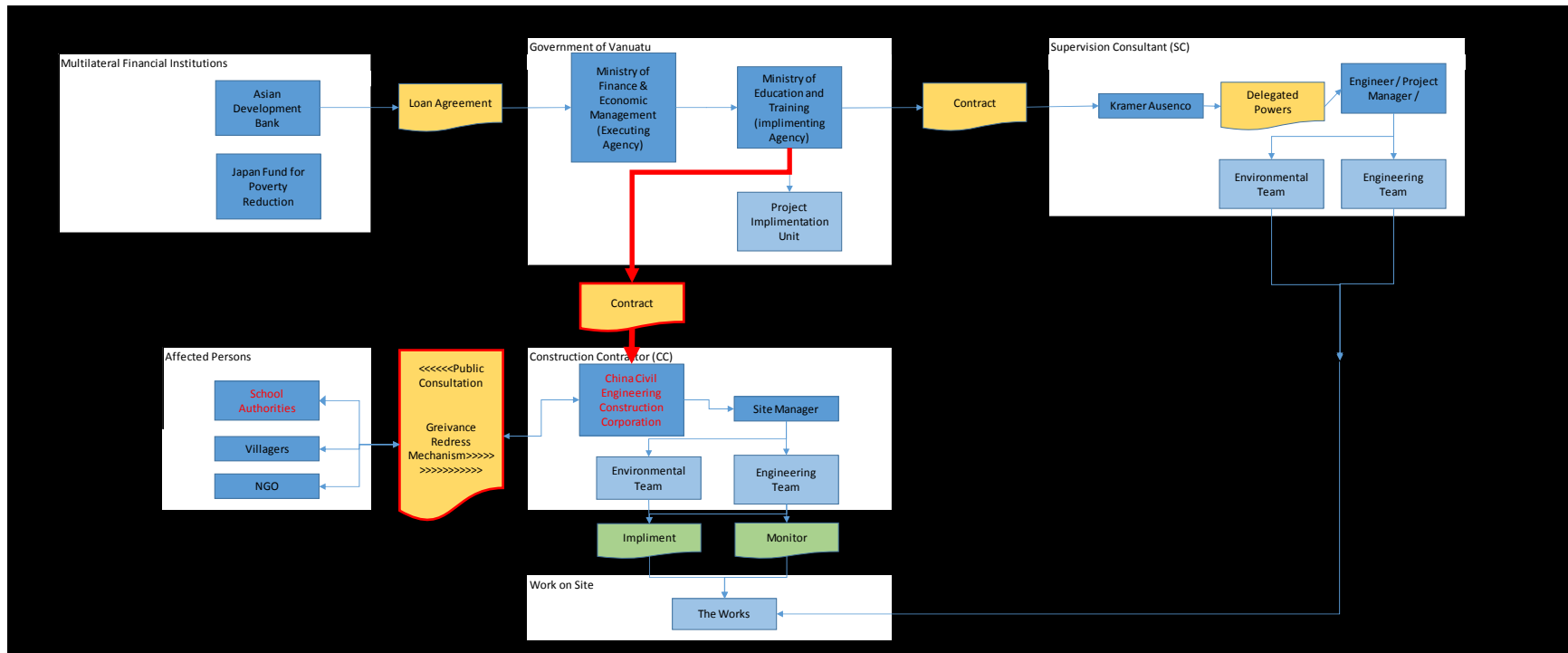
<sup>1</sup> Cyclone Pam formed on the 6<sup>th</sup> March 2015 east of the Solomon Islands intensifying to Category 5 Cyclone status on 12<sup>th</sup> March 2015. Cyclone Pam passed through Tanna on 13<sup>th</sup> March 2015.

<sup>2</sup> The four schools are Kwataparen Junior Secondary School (JSS), Ineaula JSS, Lowiepeng JSS and Imaki JSS.

3. **Multilateral Financial Institution:** The work is being carried out with resources from the Japan Fund for Poverty Reduction (JFPR). Japan established the JFPR in May 2000 to provide grants for projects supporting poverty reduction and related social development activities that can add value to projects financed by ADB<sup>3</sup>. The ADB manages the JFPR.
4. **Government of Vanuatu:** The ADB provide funds to the Government of Vanuatu through the project Executing Agency (EA), the Ministry of Finance & Economic Management. The EA in turn gives the funds to the Implementing Agency (IA) who are the Ministry of Education and Training (MoET) who are responsible for delivering the project. The IA has a dedicated agency, the Policy Implementation Unit (PIU) who address day to day issues on the project.
5. **Supervision and Construction Consultant:** The IA appoints a Design Supervision Consultant (DSC) to design, tender and supervise the project construction. The IA has appointed Kramer Ausenco (Vanuatu) Ltd. to undertake these tasks. The SC has produced preliminary designs, tender documents and invited Construction Contractors (CC) to submit tenders to the IA. The SC has identified a preferred tenderer and the IA has entered into a construction contract with the CC. The CC is China Civil Engineering Construction Corporation South Pacific Limited (CCECC).
6. The Agencies and interactions of stakeholders in the project are indicated in the following figure.

---

<sup>3</sup> <https://www.adb.org/site/funds/funds/japan-fund-for-poverty-reduction>





7. The Environmental Management Team at the MoET PIU are Mr Robert David and Mr Tanga Viri.
8. Kramer Ausenco the Supervision Consultant has engaged Ms. Priscilla Amkori as National Environmental Specialist (NES) from Malakua, Vanuatu and Mr. Andrew Taylor as International Environmental Specialist (IES). Mr. Taylor visited Vanuatu from Wednesday 23<sup>rd</sup> May to Saturday 2<sup>nd</sup> June. In that period Mr. Taylor visited the four project sites on Tanna, provided training to the NES, a briefing on Construction Environmental Management Plan (CEMP) for the MoET on 1<sup>st</sup> June and a briefing for CCECC on the CEMP, via skype, on 18<sup>th</sup> June 2018.

### 1.3. Relationships with contractors, owner, lender, etc.

9. **Relationship with CC:** This section will be completed when the CC has submitted his CEMP and the document has been approved by the IA. It will describe the relationship between IA, SC and CC and any subcontractors that are engaged.
10. **Relationship with lender:** This section will be populated in the next reporting period when the programme of meetings and missions are clearer.

### 1.4. Close-out of Vanuatu Safeguard Systems for Pre-construction phase.

11. A summary review of project documentation clearing through the Vanuatu and ADB administrative requirements.

*Table 1: Closeout of Safeguards documentation*

	Element	Date	Notes
1	Approval of the IEE	Aug 2017	Disclosed on ADB website <sup>Note 1</sup>
	Environmental Permit issued by Department of Environmental Protection and Conservation <sup>Note 2</sup>	2 Oct 2017	No Environmental Permit required. Follow the ADB approved IEE.
2	Notification of Award (of Contract)	5 June 18	
3	Contract signing	6 July 18	
4	No objection CEMP by ADB	To come	CEMP must be approved before work starts on site.
5	Approval of CEMP by MoET	To come	

Note 1) <https://www.adb.org/projects/documents/van-49320-001-iee>

Note 2) DEPC ref: ENV304/pre-application

## 2 Part II - Environmental Monitoring

12. There has been no activity on the sites in the reporting period as the Contract between MoET and the Contractor (CCECC) was only signed on 6<sup>th</sup> July. In future reports this chapter will include information on environmental monitoring data. Physical monitoring of a site often involves: noise and vibration monitoring; water quality; and air quality. However given the intensity of work on this “building reconstruction” project visual inspection during weekly and monthly audits will be used.

## 3 Part III – Social Monitoring

13. There has been no activity on the sites in the reporting period as the Contract between MoET and the Contractor (CCECC) was only signed on 6<sup>th</sup> July, in future reports this chapter will include information on social monitoring data related to the indicators and goals identified within the design monitoring framework (DMF) and gender action plan (GAP). The NGO, Care International has been engaged by the DSC as of early April 2018 and will survey and record data at the various workshop conducted planned at each of the schools/community and with the contractor. The first workshop is planned for mid to late August 2018. The HIV/AIDS workshop will be undertaken with the assistance of the Vanuatu Family Health Association (VFHA) for this workshop. VFHA will be drawing on the expertise of a nurse educator from Tanna to lead the training, with support from a peer educator, and CARE international staff.
14. The session plan is as follows:
15. **Session one - Introduction:** This session will be an introduction to the participants, including an overview of the training, and who the training team are. This introduction session will also include a pre-test.
16. **Session two – Safeguarding and grievance mechanisms:** During this session the trainers will explain why safeguarding is important, and give an overview of the grievance mechanisms that the community can use if any issues or concerns come up. We would like to use the posters that will be prepared by the contractor if possible for this session.
17. **Session three – Overview of HIV/STIs:** This session will give an overview of what HIV and STIs are for the participants. VFHA will adapt some of their existing IEC materials to hand out in this session.
18. **Session four – Risks of HIV/STI infections:** This session will explain what the risks of infections are for people.
19. **Session five – Avoiding risks and referral systems:** This session will explain to participants what steps they can take to avoid the risks of HIV/STIs, and will also provide clear information about what referral mechanisms are in place to respond to HIV/STIs.
20. **Session six – Conclusion and post test:** This will be a wrap up session for the training, and will include a post test.

## 4 Part IV – Land

21. Three out of the four sites (Kwataparen, Lowiepeng, and Ienaula) have leases in place and the works are contained within the boundaries of the lease. Imaki JSS has a signed MOA as of 30<sup>th</sup> April 2018<sup>4</sup>. Future reports will include information relating to land use issues relating to the site, camps and workers yards. This information was not available in the reporting period as the Contract between MoET and the Contractor (CCECC) was only signed on 6th July 2018

## 5 Part V - Environmental Management

### 5.1 The environmental management system (EMS), Construction EMP (CEMP), and work plans

22. This section reports on the delivery of documents and any amendments to environmental documents during the reporting period. The current status of environmental management plans (CEMP, WMP, Compensation Plan, are set out in the following table.

*Table 2: Status of Environmental Documentation*

Management Plan	Status
Construction EMP (CEMP)	Preliminary draft submitted, needs detailed plans for each site. Not approved
The following plans are identified in the EMP and Contract document:	
1) Spill Management Plan	Has not been submitted
2) Sediment Control	Has not been submitted
3) Waste Management and Minimisation Plan	Has not been submitted
4) Site Management and Access	Has not been submitted
5) Health & Safety	Has not been submitted
6) Social Safeguards	Has not been submitted
7) Chance procedures Plan	Has not been submitted

23. As the project proceeds it may be necessary to add other documentation including consents and permits dependent on the way that the Contractor choses to operate the site. These may include but are not limited to:

- temporary landing site (Imaki Site)
- alteration to existing wharf / jetty and transshipment
- waste disposal; and
- quarrying/excavation of materials

### 5.2 Site inspections and audits

24. Kramer Ausenco will be using a set of one-page location or activity specific sheets covering (i) each school site; (ii) office procedures (licenses, agreements with landowners, site access, public consultations, GRM; (iii) manufacturing areas including quarry operation and concrete batching; (iv) logistics (transport of plant and

<sup>4</sup> The leases and MoA have been seen by KA and copies are held by KA. Further information is included in the Land Due Diligence Report

materials to site). Kramer Ausenco will assess compliance with the CEMP under three indicator levels (increasing in severity) of compliance, these are: (i) observation; (ii) opportunity for improvement; and (iii) non-compliance.

### 5.3 Non-compliance notices

25. The DSC will follow a new ADB document. *Manual for Monitoring of Environmental Safeguards Implementation – Role of the Project Implementation Unit (ADB 2018)*. This document asks for environmental incidents to be recorded in an Environmental Issues Tracking Register and this approach will be followed for the next reporting period 1st July to 31<sup>st</sup> December 2018 and will be included in the Biannual Environmental Monitoring Report. The tracking register summarizes the details, including the number of notices given out, the issues covered, and the ranking of issues summarizing: i) date of conducting of monitoring/audit, ii) Category (e.g. environmental, social, Safety or other; iii) description of non-compliance, iv) corrective action; v) Non conformity level (Minor, major or n/a); vi) date for rectification; vi) responsible person; and vii) date closed out. The spreadsheet will then analyse the incidents to confirm number of issues in reporting period, number of items closed, average time for closure, etc.

### 5.4 Corrective action plans

26. No work, so nil in this reporting period. Will be populated in next reporting period

### 5.5 Consultation and complaints

27. A programme for public consultation meetings will be identified in the CEMP and this section will be populated in the next report. There have been no Contractor / public consultations in the reporting period as the Contractor had not mobilized on site. The Minister of Education and Training visited Tanna to launch the project, the dates were:
- 9 July 2018 –Kwataparen;
  - 10 July 2018 –Lowiepeng/ Ienaula; and
  - 11 July 2018 –Lowiepeng/ Ienaula.
28. A proposed Grievance Redress Mechanism was identified in the Contract Documentation and will be included in the CEMP. The objective is to deal with problems at a local level (village / school and CC working together). If it cannot be resolved it is raised to the SC and then up to the IA (MoET) and finally the court system. The mechanism is summarized in the following flow chart.

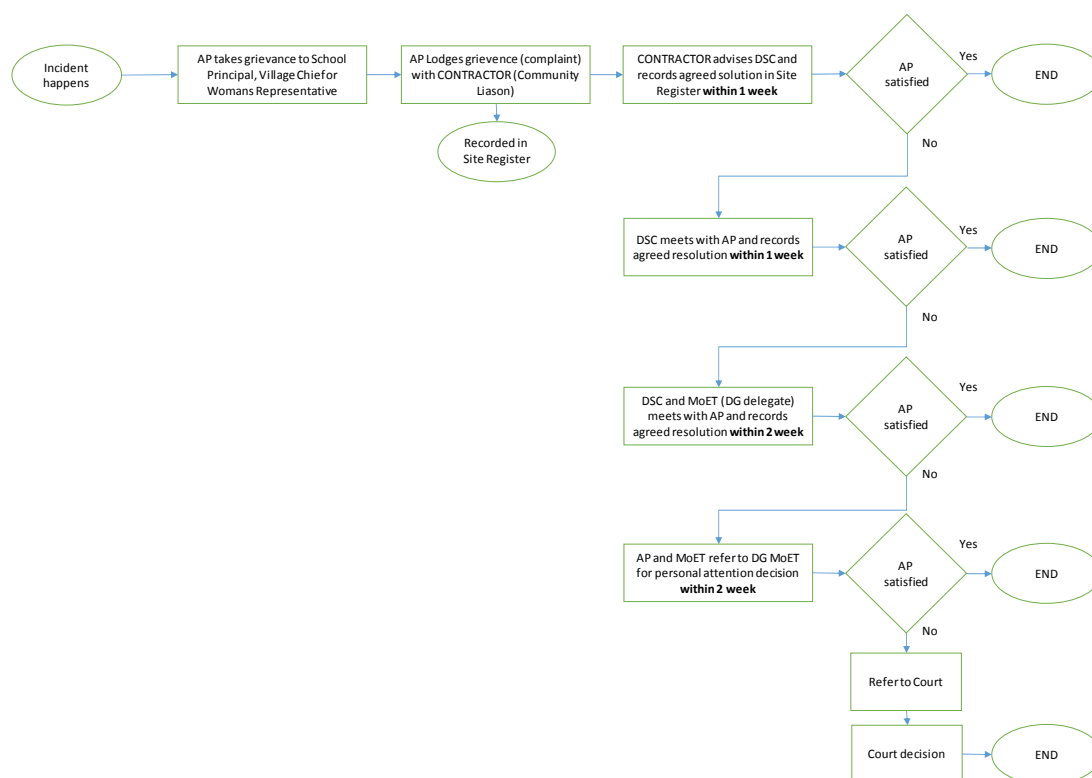


Figure 3: Flow chart for the Grievance Redress Mechanism

29. Subsequent reports will detail any complaints and the response to the complaints in the reporting period. This will be summarized in a table similar to the one following.

Table 3: Grievance Redress Mechanism - Activity in the January to June 2018 Reporting Period

Date	CCECC ref	Nature of complaint	Redress	Closeout date
None in reporting period				
END				

30. The following training exercises have been held during the reporting period.

Table 4: Training carried out in the reporting period

Date	Training	By	Recipient(s)
24 / 25 May 2018	Role of the National Environmental Specialist	Andrew Taylor (IES)	Priscilla Amkori (NES)
1 June 2018	Implementation of the Construction Environmental Management Plan (CEMP)	Andrew Taylor (IES)	Kramer Ausenco(DSC) and MoET (IA)

18 June 2018	Implementation of the Construction Environmental Management Plan (CEMP)	Andrew Taylor (IES) by Skype, Priscilla Amkori (NES) in Vanuatu	China Civil Engineering Construction Corporation (CC)
--------------	---	---	---

## 6 Part IV – Action Plan for the Next Period

31. The Action plan for the July to December period is:

- Contractor will submit and gain approval of the CEMP before any site possession is granted
- DSC derives audit tables based on the CEMP
- Contractor mobilises on site;
- DSC and CC determine a weekly and monthly environmental monitoring and audit programme;
- DSC prepares an Environmental Issues Tracking Register to record non-conformities
- CC prepares a Complaints Register
- CC carries out Public Consultations to prepare local population for the works and the mechanism for making complaints (Grievance Redress Mechanism)
- DSC, through the NGO to ensure at least 40% women to be present in consultation meetings

## 7 ANNEXES:

## 8 Annex 1: Journey Times on TANNA

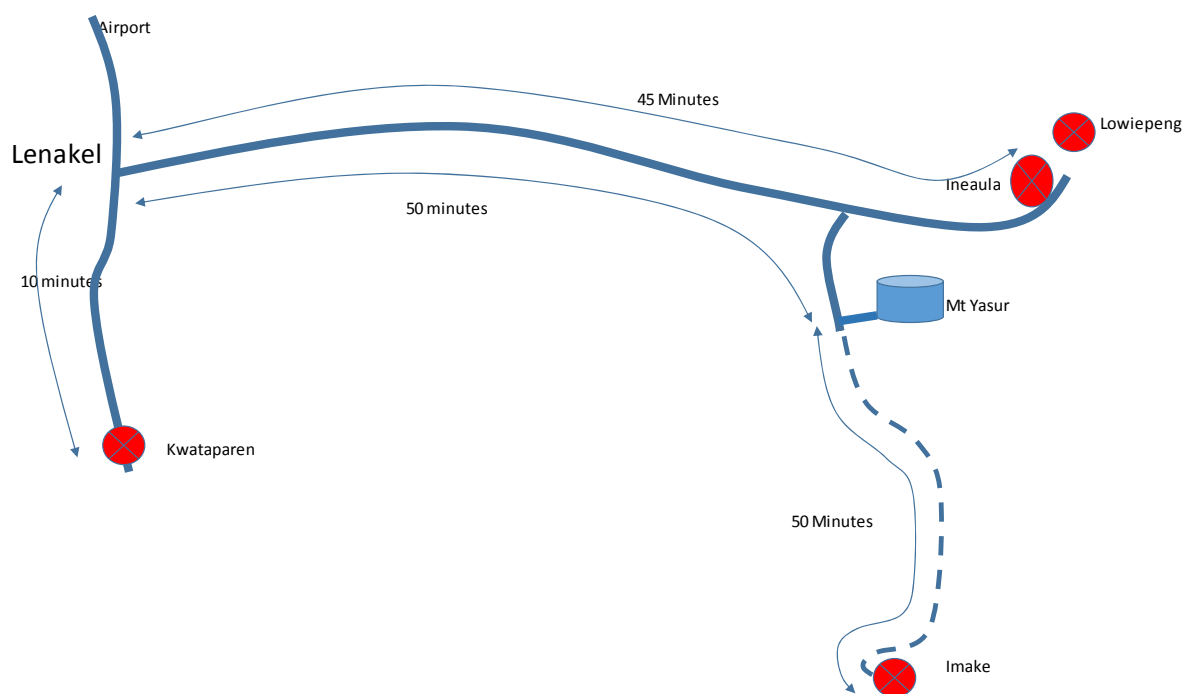


Figure 4: Location of project elements and travel times (May 2018)

## 9 Annex 2: Schematics of School Sites

Kwatapaen JSS

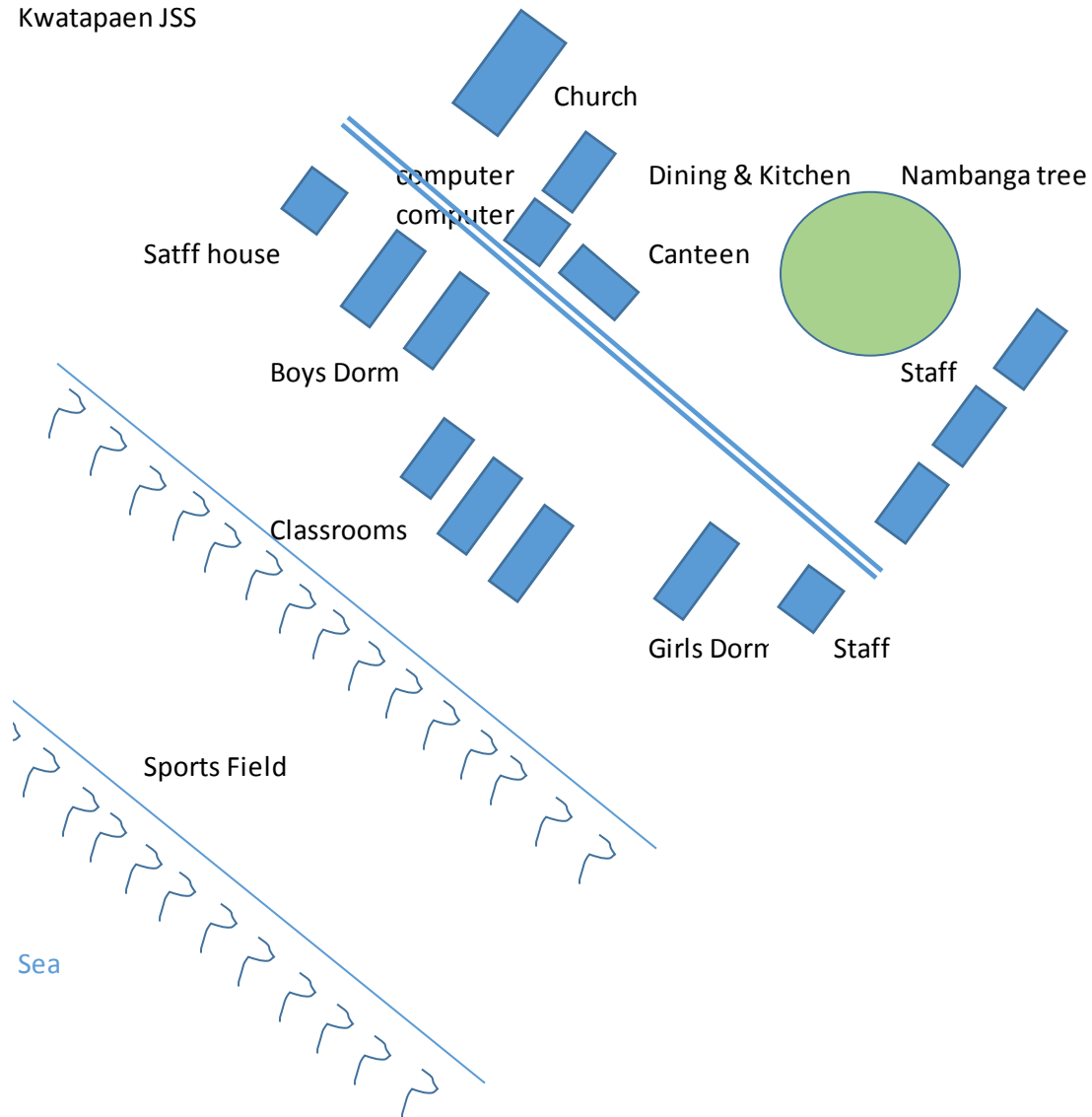


Figure 5: Schematic of existing Kwatapaen JSS site



## Lowipeng JSS

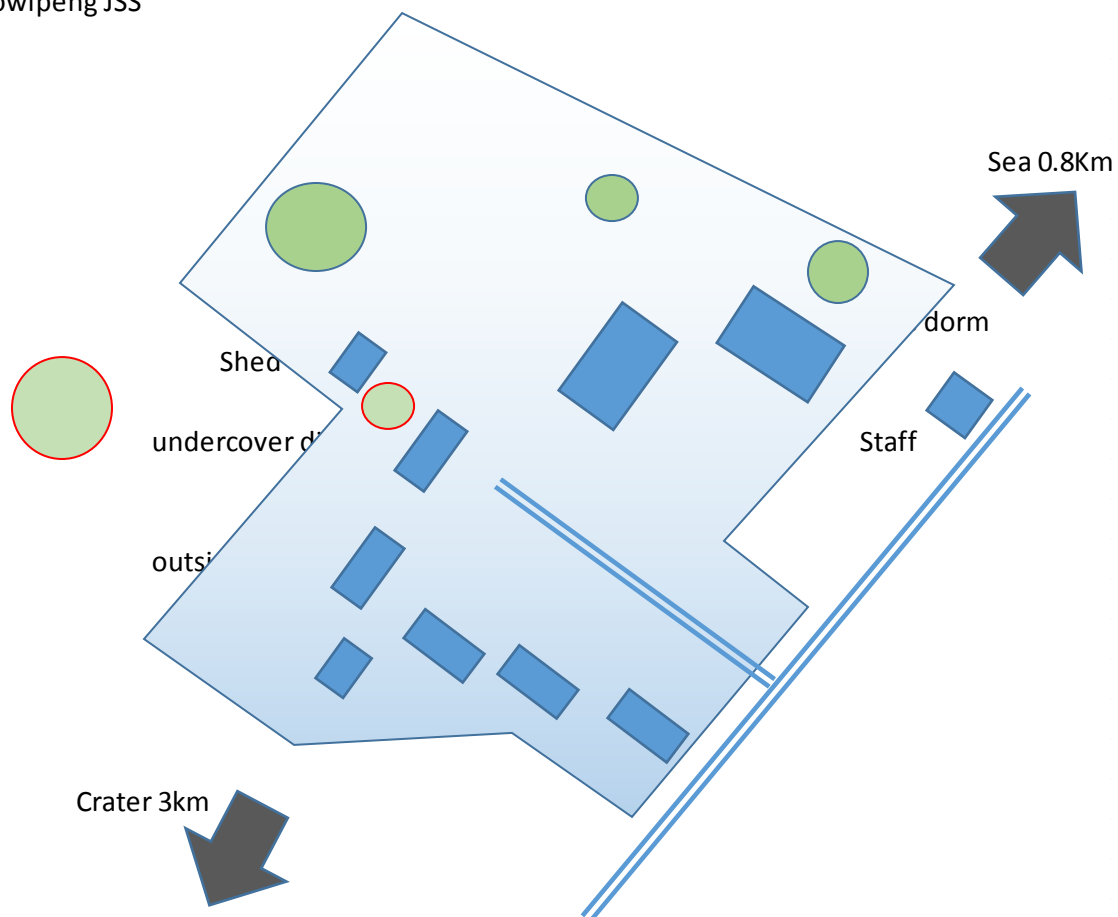
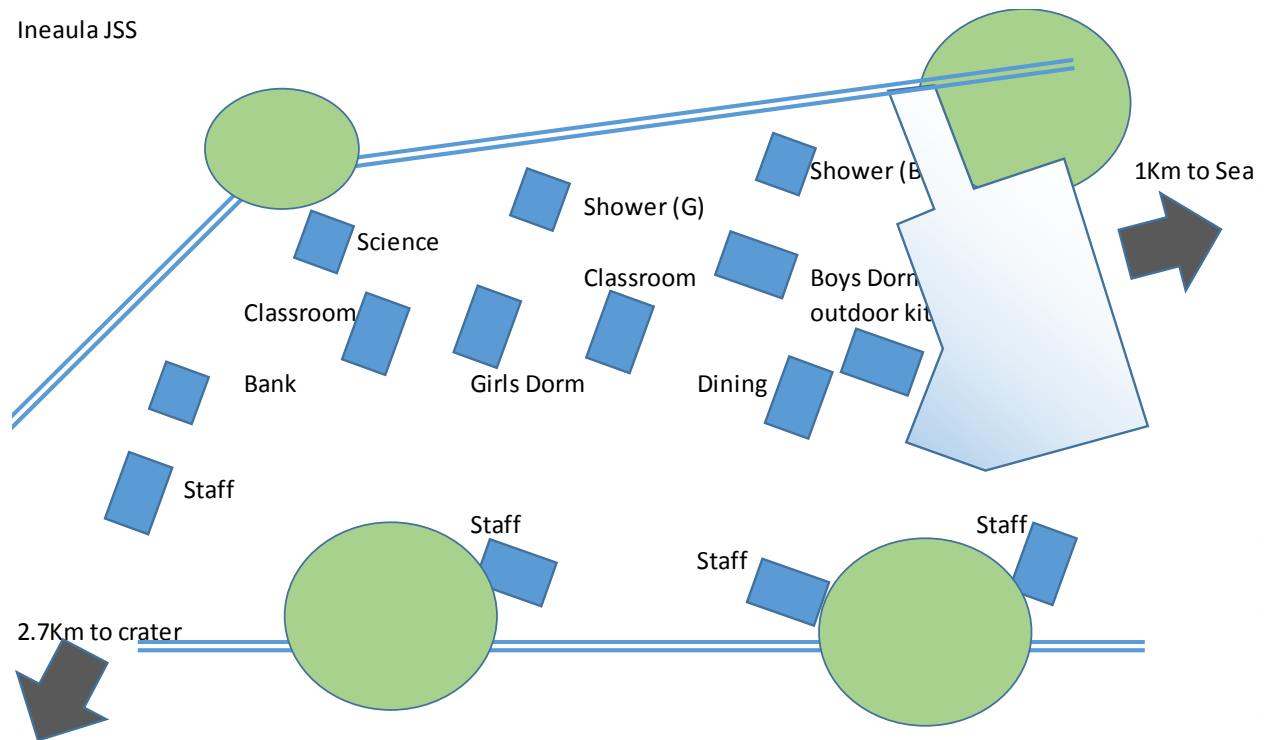


Figure 6: Schematic of existing Lowipeng JSS

## Ineaula JSS

*Figure 7: Schematic of existing Ineaula JSS*

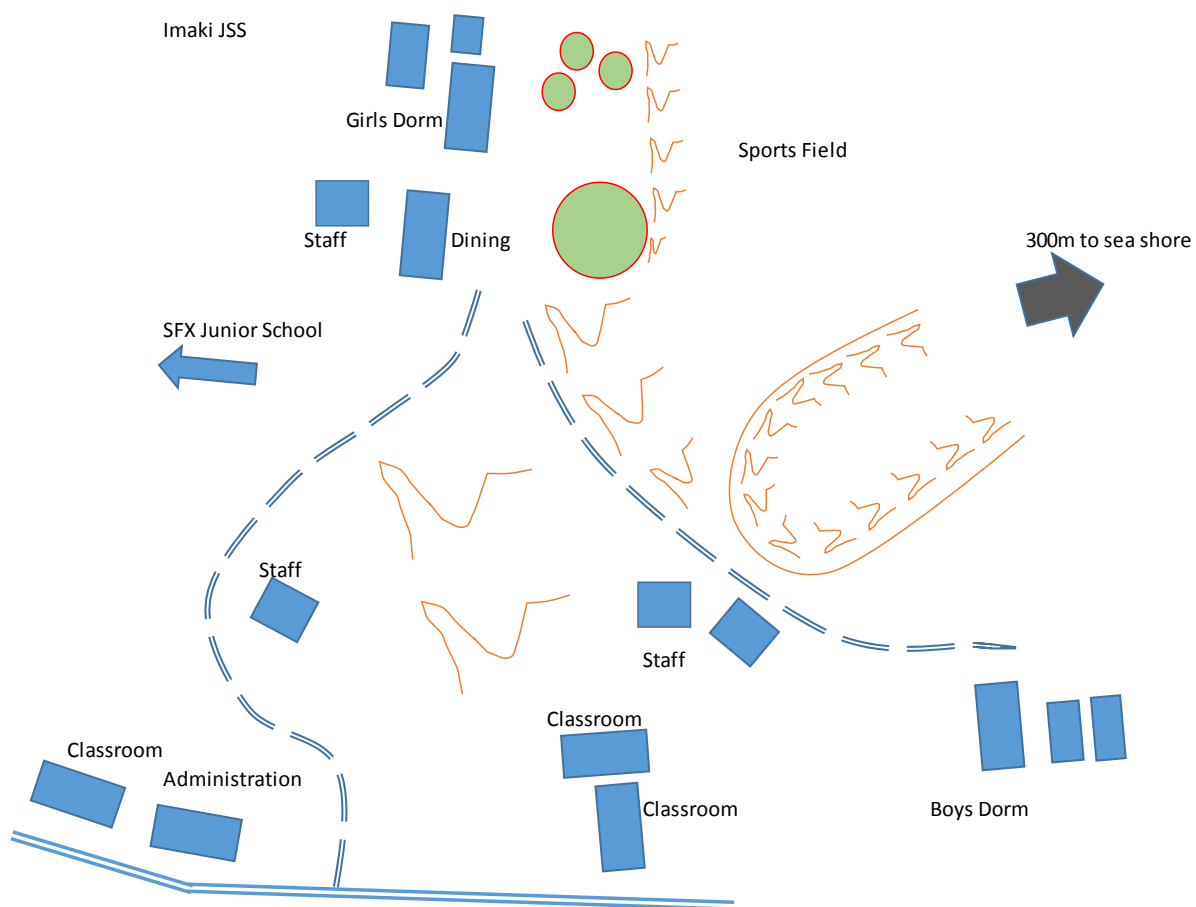


Figure 8: Schematic of existing Imaki JSS

## 10 Annex 3: Attendance at the Safeguards and CEMP Trainings

Cyclone Pam School Reconstruction

Safeguards and the Construction Environmental Management Plan (CEMP)

Presentation / Meeting

Subject: Safeguards and Contractors EMP

Location: Kramer Ausenco Office Port

/ Date: 01 / 06 / 2018 / Time: 09:00

Attending:

Organisation	Name	Position	Telephone or email
Kramer Ausenco	Andrew Taylor	International Environmental Specialist	+64 27 44 88 776 (NZ) 733 4613 (VAN) andrew@ENVISION-2020.net
MoET ERD	ROBERT DAVID	P.M.O TUPUA O/Island	776 8624 drobert@vauatu.gov
MoET Facilities Unit	Tanga Vira	<del>Provincial</del> P.M.O Penama Province	7108280/5470796 tviragiva@vauatu.gov.vu
Kramer Ausenco	Piscilla Amkovi	National Environmental Specialist	7742047 pamk392@ruicklanduniv.ac.nz
Kramer Ausenco	Nicholson Grace	Construction Supervisor	5551707 NicholsonGrace@KramerAusenco.com
Kramer Ausenco	Saji Abraham	TEAM LEADER	568 9949 saji.abraham@kramer.com

Meeting Ended: \_\_\_\_\_

Figure 9: Kramer Ausenco and MoET team who attended the CEMP training on 1/06/18.

### Cyclone Pam School Reconstruction

#### Safeguards and the Construction Environmental Management Plan (CEMP)

#### Presentation / Meeting

Subject: CEMP Training with China Civil Engineering Construction Corporation South Pacific Limited

For Lots 1, 2 3 and 4

Location: Kramer Ausenco Office – Port Vila, Vanuatu

Date: 19 / 06 / 2018

Time: 3pm start and 4.45pm finish

Attending:

Organisation	Name	Position	Telephone or email
Kramer Ausenco	Saju Abraham	Team Leader/Project Architect (DSC)	Saju.abraham@kramerausenco.com
Kramer Ausenco	Priscilla Amkori	National Environmental Specialist (DSC)	Adb.nes@gmail.com
Kramer Ausenco	Nicholson Garae	Construction Supervisor (DSC)	Nicholson.Garae@kramerausenco.com
Kramer Ausenco	Andrew Taylor	International Environmental Specialist (DSC)	bronshill@yahoo.com
CCECC	Lifu Wang	Contractor Representative	wanglifu.ccecc@gmail.com
CCECC	Nicanor De Guzman	HSE Officer	nicanor.ccecc@gmail.com
CCECC	Rose Luo	Business Manager	rosetuojiao@outlook.com
CCECC	Ruel Angeles	Civil Engineer	ruel.ccecc@gmail.com
CCECC	Dennis Lozada	HSE Specialist	denzlang@gmail.com
CCECC	Yingcheng Xie	Civil Engineer	xieyinghcheng.ccecc@gmail.com
CCECC	Lillyrose Welwel	Public Relations Officer	lillyrosew@gmail.com

Meeting Ended: 4.45 pm 19/06/2018.

Figure 10: CCECC and Kramer Ausenco team who attended the CEMP training on 19/06/18.

## 11 Annex 4: Photographs



*Figure 11: CEMP training by Mr. Taylor (in blue) to Kramer Ausenco and MoET team*



*Figure 12: CEMP training (via skype) by Mr. Taylor for China Civil Engineering Construction Corporation*

Contact Information		Document Information
Kramer Ausenco (Vanuatu) LTD	Prepare for:	Ministry of Education and Training
Level 1, Former Bank of Hawaii Building	Project Name:	Cyclone Pam School Reconstruction Project
Lini Highway, Port Villa, Vanuatu	File Reference:	16116v rep 180725 adb cpsrp baemr-01 q2-2018-rb.docx
Telephone: +678 23457		
Email: Saju.Abraham@kramerausenco.com	Job Reference	16116V
Email: Jay.Jameson@kramerausenco.com	Date	Thursday 4 <sup>th</sup> October 2018

## 12 Revision Status

Revision	Date	Description	Author		Approver	
			First Name Last Name	Position Title	First Name Last Name	Position Title
A	25/07/2018	BEMR#1-2018	Andrew Taylor	International Safeguards Specialist	Saju Abraham	Team Leader
B	03/10/2018	BEMR#1-2018	Andrew Taylor	International Safeguards Specialist	Saju Abraham	Team Leader

## 13 Issue Status

Revision	Date	Description	Author		Approver	
			First Name Last Name	Position Title	First Name Last Name	Position Title
A	25/07/2018	BEMR#1-2018	Andrew Taylor	International Safeguards Specialist	Saju Abraham	Team Leader
B	03/10/2018	BEMR#1-2018	Andrew Taylor	International Safeguards Specialist	Saju Abraham	Team Leader

## 14 Copyright

The copyright of the material herein is vested in Kramer Ausenco (Vanuatu) Ltd. All rights are reserved. Neither the whole nor any part of this document may be disclosed to any third party or reproduced, stored in any retrieval system or transmitted in any form by any means (electronic, mechanical, reprographic, recording or otherwise) without the prior consent of the copyright owner.

Level 1, Former Bank of Hawaii Building, Lini Hwy, Port Villa, Vanuatu

Telephone (+678) 23457