

# Social Monitoring Report

---

## Semi-Annual Report

Project Number: 51190-001  
Loan Number: L3702 NEP  
July 2020

## Nepal: Disaster Resilience of Schools Project

Prepared by the Government of Nepal for the Asian Development Bank.

This Social Monitoring Report is a document of the borrower. The views expressed herein do not necessarily represent those of ADB's Board of Directors, Management, or staff, and may be preliminary in nature. Your attention is directed to the "terms of use" section of this website.

In preparing any country program or strategy, financing any project, or by making any designation of or reference to a particular territory or geographic area in this document, the Asian Development Bank does not intend to make any judgments as to the legal or other status of any territory or area.

## TABLE OF CONTENTS

<b>1. INTRODUCTION.....</b>	<b>1</b>
1.1 Background of the Project.....	1
1.2 Implementation Status of Sub projects.....	1
1.3 Updating Master Plans, DDRs of the schools under RECON-1 and RECON-2 .....	2
<b>2. STATUS OF IMPLEMENTATION OF DRSP WITH REGARDS TO SOCIAL SAFEGUARDS.....</b>	<b>3</b>
2.1 Land Acquisition for RECON-1 & RECON-2.....	3
2.2 Social Safeguard Activities for updating of Master Plan.....	3
2.3 Impacts on Indigenous People .....	4
2.4 Safeguards Loan Covenants .....	4
<b>3. MONITORING CHECKLIST/INDICATORS FOR MONITORING OF SOCIAL SAFEGUARD ACTIVITIES.....</b>	<b>9</b>
<b>4. STATUS OF OTHER SOCIAL ACTIVITIES.....</b>	<b>10</b>
<b>5. MONITORING AND REPORTING ARRANGEMENTS .....</b>	<b>10</b>
<b>6. COMPLIANCE TO NATIONAL LAWS AND POLICY .....</b>	<b>ERROR! BOOKMARK NOT DEFINED.</b>
<b>7. GRIEVANCE REDRESS SYSTEM AND MECHANISM.....</b>	<b>10</b>
7.1 Redressed of Grievances .....	11
7.2 Current Status of GRM.....	11
<b>8. ACTIVITIES CARRIED OUT WITH RESPECT TO PUBLIC PARTICIPATION AND GENDER ACTION PLAN PREPARATION AND IMPLEMENTATION .....</b>	<b>14</b>
8.1 Gender Action Plan (GAP) Implementation: .....	14
8.2 Consultations and Information Disclosure:.....	15

## LIST OF TABLES

Table 1: Status of Loan Covenants .....	5
Table 2: Monitoring Indicators and Status.....	9
Table 3: Summary of GRC1, GRC2 and Safeguards Desk formation under Recon-2 .....	11
Table 4: Project safeguard support team.....	11

## LIST OF ANNEXES

Annex 1: Meeting minute for no obstruction in building construction due to the presence of Temple/Stupa .....	18
Annex 2: Existing site plans and Master Plans of the schools with temples or stupa with the boundary .....	19

## **ABBREVIATIONS**

ADB	–	Asian Development Bank
AP	–	Affected Persons
CLPIU (Edu)	-	Central Level Project Implementation Unit (Edu)
DDR	-	Due Diligence Report
DSC	–	Design and Supervision Consultants
DUDBC	–	Department of Urban Development and Building Construction
DLPIU	-	District Level Project Implementation Unit
EA	–	Executing Agency
EARF	-	Environmental Assessment and Review Framework
GON	–	Government of Nepal
GRC	–	Grievance Redress Committee
IA	–	Implementing Agency
IP	–	Indigenous People
IR	–	Involuntary Resettlement
LA	–	Land Acquisition
LA Act	–	Land Acquisition Act
NGO	–	Non-Government Organizations
PCO	–	Project Coordination Office
PD	–	Project Director
PIU	–	Project Implementation Unit
PAM	–	Project Administration Manual
REA	-	Rapid Environment Assessment
RP/IPP	–	Resettlement Plan
R&R	–	Resettlement and Rehabilitation
TLC	-	Temporary Learning Center
RE	-	Resident Engineer
SE	-	Site Engineer
SEM	-	Safeguard and Environment Monitors

## **1. Introduction**

### **1.1 Background of the Project**

1. The Disaster Resilience of Schools Project (DRSP) will reconstruct and retrofit about 174 secondary school buildings to earthquake-resistance standard that were damaged by the devastating 2015 Gorkha earthquake in Nepal. These schools have been selected based on the total enrollment, the scale of the physical damages incurred, and the proportion of girls and underprivileged students. They are located in 14 districts affected by the earthquake. The loan between Nepal and Asian Development Bank was agreed for the implementation of the project dated 20 November 2018. ADB agreed to lend to the Borrower from ADB's ordinary capital resources an amount of one hundred forty-eight million eight hundred sixty-four thousand Dollars (\$ 148,864,000.00). Central Level Project Implementation Unit (Education) or CLPIU is the Borrower's Central Level Project Implementation Unit (Education) under National Reconstruction Authority (NRA). The investment works will also include the provision of laboratories, information communication and technology, library, gender segregated toilets, and amenities designed to mitigate other potential weather-related disaster and ensure a safe learning environment. Along with the infrastructure investments, the project will train the school management and communities to increase awareness and reduce exposure and vulnerability to natural disaster.

2. The impact of the project will be to enhance the disaster risk management for human resource development. The expected project outcome is the achievement of disaster resilience of schools and communities through improved learning environment. The three expected project outputs are: (i) heavily damaged schools reconstructed and improved; (ii) unsafe schools retrofitted and disaster risk reduced; and (iii) institutional capacity for disaster resilience strengthened.

3. A total of 67 schools were considered for first batch (Recon-1). The DDR review and assessment indicated that 66 schools had sufficient land with land ownership certificate within existing boundary and one school had adequate land with land use right issued by the local government. The construction activities are expected to be limited within the existing boundaries of the schools. According to the assessment of land availability for the proposed schools considered for project design and readiness, there would be no need of new land acquisition resulting in physical as well as economic displacement. The due diligence report prepared for social safeguards presents detailed information on land availability and requirements disaggregated by schools.

4. Similarly, a total of 107 schools are considered for second batch (Recon-2). DDRs and master plans prepared for all the schools are being reviewed and finalized. Package wise consolidated DDRs for 9 packages under Recon-2 have been prepared and finalized.

5. Based on DDR review and analysis the schools considered for funding by the project in the future will also not require additional land with few exceptions. A minimal area of land may be required in rare case where existing land would not be suitable for reconstruction due to unforeseen geophysical conditions. The project has been classified as category 'B' for involuntary resettlement in accordance with ADB's SPS 2009. A Resettlement Framework had been prepared to (i) bridge the gap between borrower's and involuntary resettlement requirements of ADB's Safeguard Policy Statement (2009), (ii) guide the screening and planning process of land acquisition and involuntary resettlement, and (iii) lay out the principles and objectives governing the preparation and implementation of involuntary resettlement planning documents.

### **1.2 Implementation Status of Sub projects**

6. Construction activity is still ongoing in the 66 schools under Recon-1. The progress is quite varied from school to school. However, structural works and outer plaster has been completed significantly. The major ongoing works are construction of retaining wall, stone masonry wall, installation of doors, and windows, construction of apron drain and breast wall,

and stair case pavement works etc. However, one of the school namely, Rajya Laxmi SS of Okhaldhunga has been finally dropped after consensus with CLPIU, ADB and DRSP-DSC, thus there are now 66 schools under Recon-1. The school was dropped due to dispute between two communities for the construction of new school building. This is because, one of the community intended to construction the new school building elsewhere about 1 km downhill from the existing school area. Further, the community is not willing to demolish existing vulnerable school building as well as not willing to trim down the branches of religious tress (belong to Wangbule Rai community) disturbing to erect new school building within the existing school premises. Whereas, other community people were opposing for the construction of school building into new location. However, construction work is ongoing in the 66 schools under RECON-1.

7. Due to the outbreak of novel corona virus (COVID-19) the construction activities of schools under Recon-1 and Recon-2 have been hampered in all DRSP districts. Construction works during the second quarter of year is less in comparison to normal condition. However, there has been an average Physical Progress of 78%, with highest being in Bhaktapur 92% and lowest being in Okhaldhunga with 34% in the schools of eight project districts under Recon-1. Approximately 94.5% of the time has elapsed except Okhaldhunga district i.e. 89% elapsed.

8. Awarding of the contracts for the 107 schools under Recon-2 is under progress and are in different stage of implementation. There are 9 contract packages which include 107 different school sites in Recon-2 spread over 12 districts. Contract package 1 Sindhuli and package 2 Okhaldhunga have not been awarded yet. Contract package 3 comprising 4 schools from Gorkha and 3 schools from Makwanpur and contract package 4 comprising 5 schools from Dhading and 6 schools from Nuwakot have been awarded. Contractors in these packages are in mobilization stage. Contract package 5 Kavrepalanchowk, package 6 Dolakha, and package 7 Ramechhap with 9, 11 and 17 schools respectively have also been awarded within this reporting period. However, contractors have not been mobilized yet in the schools under these packages. Similarly, contract package 8 comprising 9 schools from Kathmandu and 7 schools from Bhaktapur has not been awarded. Contract package 9 covering 8 schools of Sindhupalchowk has been awarded for construction and contractor is in mobilization stage. However, by the end of June 2020, there has been an average Physical Progress of 8%, with highest being in Makwanpur 13% and lowest being in Nuwakot 3% in the schools under Recon-2 with approximately 22% of the time has elapsed.

9. Updating of DDRs for Recon-2 School have been completed. Preparation of package wise consolidated DDRs for schools under Recon-2 have also been completed. The process of awarding contract for construction is going ahead after the approval of DDR for schools under Recon-2. However, no contracts have been awarded for Retroft1 and Retroft2 packages.

### **1.3 Updating Master Plans, DDRs of the schools under RECON-1 and RECON-2**

10. Individual DDRs of 66 school under Recon-1 was completed before the contract award and a consolidated DDR was disclosed on ADB website. The individual DDRs of 107 schools under Recon-2 has been updated and submitted to CLPIU. Preparation of Package wise Consolidated DDRs for Recon-2 is almost completed. DDRs of 18 Schools (5 from Dhading, 6 from Nuwakot District and 4 from Gorkha, 3 from Makawanpur) under Recon-2 has already been completed and submitted to CLPIU. Similarly, consolidated DDRs for package 3- Gorkha/Makawanpur and package 4- Dhading/Nuwakot has been completed and submitted to CLPIU.

11. Revision and updating of DDRs of 61 Schools (17 from Ramechhap, 11 from Dolakha, 9 from Kavrepalanchowk, 8 from Sindhupalchowk, 7 from Bhaktapur, and 9 from Kathmandu District under Recon-2 has already been completed and submitted to CLPIU. Similarly, consolidated DDRs for package 5- Kavrepalanchowk, package 6 Dolakha, package 7 Ramechhap, and package 8 Kathmandu and Bhaktapur has been completed. Further,

revision and updating of DDRs of 13 Schools from Okhaldhunga and 15 Schools from Sindhuli under Recon-2 has been completed in which separate section for environmental DDRs maintained. Consolidated DDRs have been prepared separately for Okhaldhunga Schools and Sindhuli Schools.

12. The DDRs prepared for schools under Recon-2 of Kavrepalanchowk and Ramechhap Districts also included the assessment conducted for the possible impact on religious structures such as stupa or temple are located within the school compounds. The assessment was carried out based on questionnaire by CLPIU in consultation with concerned experts and consultation with concerned people in the field.

13. Assessment was carried out for a stupa located within the boundary of Baudha SS, Bisli and community temples located within the boundary of Kalika Devi SS, Maharudra SS and Satalingeshowr SS under Recon-2 of Ramechhap District. Similarly, assessment was also carried out for assessing the impact of a temple situated within the school premises of Devithumka SS of Kavrepalanchowk under Recon-2. It was found that the temple lies far from the construction site and there won't be any impact and disturbance in the temple with the construction of school buildings and vise-versa.

14. Further, user right attached in the DDR of Himalaya SS recommended that out of 16 ropani (8,139.79 sq. m.), 6 ropani (3,052.42 sq. m.) was surveyed in the name of Devasthan a cultural group is being to school has been assessed. A temple assessment checklist has been prepared by DSC in order to assess cultural and religious issue that might occur during the time of construction. The assessment is especially focused upon temples and cultural place of worship existed within and around the school premises. This has been a lesson learnt from the Rajyalaxmi SS of Okhaldhunga; hence, in order to avoid or minimize impact upon socio-cultural and religious aspect, such temples, and cultural sites has been assessed and incorporated in the DDRs prepared for the schools under Recon-2.

15. A meeting was conducted in the case of Himalaya SS in presence of all related stakeholders to temple and schools including locals. Based on the stakeholder meeting, and review of the user right legal document which is attached in DDR, there will not be any disturbance or collateral effect on the nearby temple in the school during the construction. Meeting minutes with the checklist-assessing temple situated within the schools under Recon-2 are presented in the Annex 1.

## **2. Status of Implementation of DRSP with regards to Social Safeguards**

### **2.1 Land Acquisition for RECON-1 & RECON-2**

16. The social impact conditions in terms of involuntary resettlement, impacts on indigenous people, loss of income and assets, and access to assets because of school reconstruction as described in DDR (June 2018) of Recon-1 schools remained largely unchanged till this date. This means that there have not been involuntary resettlement impacts. All the construction works are being carried out on the existing land owned by or legally occupied by the schools under Recon-2. For few schools under Recon-2 of Okhaldhunga, Sindhuli, Ramechhap, Dolakha, Kavrepalanchowk, Sindhupalchowk, Bhaktapur, Kathmandu, Dhading, Gorkha, Makwanpur, and Nuwakot districts have been utilizing land proposed for the construction of school building since long time back.

### **2.2 Social Safeguard Activities for updating of Master Plan**

17. Master plans together with DDRs have been updated for schools having changes in Master Plans supported by necessary safeguard documents as required and to be submitted for approval. There is no further land acquisition of land other than what has been already acquired or user rights obtained as maybe the case. Project have got user right document from local government of Kalika SS of Okhaldhunga , five schools namely Shree Gram Kalika SS, Shree Kalika SS, Netra Kali SS, Shree Prabhat SS and Shree Saluke SS of Sindhuli, nine schools of Ramechhap District such as Bhringeswor SS, Jyoti SS, Kalika Devi SS,

Kantheshwor SS, Maharudra SS, Manthali SS, Satalingeshwor SS, Shiivalingeshwor SS, and Shree SS. In addition, two school of Dolakha District such as Janajyoti SS, and Sarada SS, and six schools of Kavrepalanchowk District namely Bhaleshwor SS, Gyaneshwori SS, Himalaya SS, Laxmi Narayan SS, Sarasati SS, and Seti Devi SS.

18. Likewise, local government has provided user right to two schools of Sindhupalchowk District such as, Rameswor SS, and Seti Devi SS. Three schools from Bhaktapur and seven schools from Kathmandu under Recon-2 are provided with user rights. The list of such schools are Bal Premi SS, Chuna Devi SS, and Shanti Niketan SS from Bhaktapur and Balbodh SS, Jalupa SS, Jana Prabhat SS, Janauddhar SS, Kendriya Bahira SS, Nabin Gram Shiksha Mandir SS, and Ugratara SS of Kathmandu District. User right has been provided by local government for Deurali SS, and Tripura Sundari SS of Dhading District, Bal Ujjwal SS of Makawanpur and Shree Gyan Jyoti SS and Shree Chandi SS, of Nuwakot District for the utilization of land enjoying by the school. However, none of these activities is expected to cause displacement and other losses to people.

## **2.3 Impacts on Indigenous People**

19. During field visits, it has been reconfirmed that the land being used by the schools is exclusively for educational purposes where indigenous peoples have no collective attachments. The new school facilities built under the project will be beneficial to the children of the indigenous people who are/will be among the students of the school. Implementation of the project activities has not directly nor indirectly affected the customary rights, livelihood system or culture of the indigenous people. Hence, the project remained Category C for indigenous peoples according to ADB's Safeguard Policy Statement (2009).

## **2.4 Safeguards Loan Covenants**

### **2.4.1 Compliance Status of Project**

20. The environmental and social safeguard requirements have been assessed and it has been found that the project has thus far complied with the statutory requirements related to the safeguards.

21. The compliance status with social loan covenants are presented in the following

**Table 1: Status of Loan Covenants**

S.N.	Covenants as Mentioned in Schedule 4	Status of Compliance	Action Required
<b>Implementation Arrangements</b>			
<b>Land Acquisition and Involuntary Resettlement</b>			
Loan Agreement Schedule 4, para 6	<p>6. The Borrower shall ensure that:</p> <p>(a) All land and all rights-of-way required for the Project are made available to them. Works contractor in accordance with the schedule agreed under the related Works contract and all land acquisition and resettlement activities are implemented in compliance with (i) all applicable laws and regulations of the Borrower relating to land acquisition and involuntary resettlement; (ii) the RF; and (iii) all measures and requirements set forth in the RP, and any corrective or preventative actions set forth in the Safeguards Monitoring Report; and</p> <p>(b) No works involving involuntary resettlement impacts are commenced until ADB has cleared the final RP of each package.</p>	No land acquisition is involved in the construction activities under Recon-1.	Most of the schools have submitted land ownership certificates ( <i>Lal Purja</i> ). Schools without land ownership certificate have provided land user right document issued by local government. All such document are maintained in updated DDRs of schools under RECON-01.
Loan Agreement Schedule 4, para 7	<p>7. Without limiting the application of the Involuntary Resettlement Safeguards or the RP, the Borrower shall ensure that no physical or economic displacement takes place in connection with the Project until:</p> <p>(a) Compensation and other entitlements have been provided to affected people in accordance with the RP; and</p> <p>(b) a comprehensive income and livelihood restoration program have been established in accordance with the RP.</p>	No physical or economic displacement has taken place.	No action required as of now.
Labor Standards, Health and Safety			



S.N.	Covenants as Mentioned in Schedule 4	Status of Compliance	Action Required
<b>Implementation Arrangements</b>			
Loan Agreement Schedule 4, para 9	8. The Borrower shall ensure that the core labor standards and the Borrower's applicable laws and regulations are complied with during Project' implementation. The Borrower shall include specific provisions in the bidding documents and contracts financed by ~ ADB under the Project requiring that the contractors, among other things: (a) comply with the Borrower's applicable labor law and regulations and incorporate applicable workplace occupational safety norms; (b) do not use child labor; (c) do not discriminate workers in respect of employment and occupation; (d) do not use forced labor; (e) allow freedom of association and effectively recognize the right to collective bargaining; and (f) disseminate, or engage appropriate service providers to disseminate, information on the risks of sexually transmitted diseases, including HIV/AIDS, to the employees of contractors engaged under the Project and to members of the local Communities surrounding the Project area, particularly women. The Borrower shall strictly monitor compliance with the requirements set forth above and provide ADB with regular reports.	<b>Complied.</b> DLPIU through its Design and Supervision Engineer (DSC) is supervising and monitoring the compliance of the labor, health, and safety law regulations. The project work complies with ADB's requirements and national laws & regulations.	Regular monitoring and supervision including reporting on labour, health, and safety will be required. Full time Safeguards and GESI Monitors at district level have been appointed in 8 Recon-1 districts to support the DLPIU in these matters.
<b>Human and Financial Resources to Implement Safeguards Requirements</b>			
Loan Agreement Schedule 4, para 11	11. The Borrower shall make available necessary budgetary and human resources to fully implement the EARF, IEE and EMP.	Safeguards experts in DSC have been mobilized; EARF is being implemented for assessment, monitoring and reporting and the EMP provisions incorporated in the BoQ.	Monitoring activity by Safeguards and GESI Monitors will be continued until the end of project.
<b>Safeguards — Related Provisions in Bidding Documents and Works Contracts</b>			
Loan Agreement Schedule 4, para 12	12. "The Borrower shall ensure that all bidding documents and contracts for Works contain provisions that require contractors to: (a) comply with the measures relevant to the contractor set forth in the EARF, IEE and the EMP (to the extent they concern impacts or affected people during construction), and any corrective or preventative actions set forth in a safeguard monitoring reports and other project related documents;	<b>Complied.</b> All bidding documents are prepared as per ADB Standard Bidding Document (SBD).	No action required.

S.N.	Covenants as Mentioned in Schedule 4	Status of Compliance	Action Required
<b>Implementation Arrangements</b>			
	(b) make available a budget for all such environmental and social measures; (c) provide the EA with a written notice of any unanticipated environmental risks or impacts that arise during construction, implementation or operation of the Project that were not considered in the EARF, IEE and the EMP; (d) adequately record the condition of roads, agricultural land and other infrastructure prior to starting to transport materials and construction; and (e) reinstate pathways, other local infrastructure, and agricultural land to at least their pre-project condition upon the completion of construction		
<b>Safeguards Monitoring and Reporting</b>			
Loan Agreement Schedule 4, para 13	<b>13 The Borrower shall do the following:</b> (a) submit semi-annual Safeguards Monitoring Reports for environmental ' and involuntary resettlement to ADB and disclose relevant information from such reports to affected persons promptly upon submission; (b) if any unanticipated environmental and/or social risks and impacts arise during construction, implementation or operation of the Project that were not considered in the EARF, IEE and the EMP, promptly inform ADB of the occurrence of such risks or impacts, with detailed description of the event and proposed corrective action plan; and (c) report any actual or potential breach of compliance with the measures and requirements set forth in the EMP promptly after becoming aware of the breach.	Mentoring and reporting will be done as per covenants.	Timely submission of quarterly and semiannual monitoring reports.
<b>Grievance Redress Mechanism</b>			
Loan Agreement Schedule 4, para 18	18. The Borrower shall ensure that, within 3 months after the Effective Date, the EA enhances its existing GRM to be acceptable to ADB, and forms grievance redress committees at all levels (central, local, and school) to receive and resolve complaints/grievances or act upon reports from stakeholders on misuse of funds and other irregularities, including grievances due to environmental impacts and land acquisition. The committee shall (a) make public of the	<b>Partially complied.</b> Grievance redress mechanism (GRM) established. A committee that constitutes the GRC2 in DLPIU to receive and resolve complaints and grievances has been formed. At the school level,	Effective implementation

S.N.	Covenants as Mentioned in Schedule 4	Status of Compliance	Action Required
<b>Implementation Arrangements</b>			
	existence of the GRM; (b) review and address grievances of stakeholders of the Project, in relation to either the Project, any of the service providers, or any person responsible for carrying out any aspect of the Project; and (c) proactively and constructively responding to them.	formation of GRC1 committee is ongoing.	

### 3. Monitoring checklist/indicators for monitoring of Social Safeguard Activities

22. Standard monitoring checklist/indicators have been developed and provided with orientation training conducted both at DRSP head office and at respective sites during field visits to all the Safeguards and GESI monitors (SM) for monitoring social safeguard activities. The Following table gives the overall status of monitoring progress.

**Table 2: Monitoring Indicators and Status**

S. N.	Resettlement Activities	Progress	Remarks
<b>A. Preconstruction activities and resettlement plan activities</b>			
1	Assessment of new resettlement impacts due to changes in project design (if required)	Not Applicable (N/A) as the sub projects are already in construction stage	
2	Preparation/updating of resettlement plan(s) based on final detail design	N/A	
	Disclosure of updated resettlement plan to affected people and communities	N/A	
3	Submission for review and approval of the final/ updated resettlement plan from ADB	N/A	
4	Approval to start the civil works from ADB	N/A	
5	Disclosure of approved final RP(s) in ADB and EA websites	N/A	
6	Establishment of grievance redress committee	N/A	
7	Verification of displaced persons census list; assessment on compensation and assistance, and readjustment	N/A	
	Preparation/selection of the temporary relocation sites for the hawkers	N/A	
<b>B. Resettlement plan implementation</b>			
1	Payment of compensation to displaced persons	Not required as there is no displacement of people under any of the sub-projects	
2	Special measures for vulnerable groups	N/A	
3	Reinstallation of public utilities	Walking trails in Shree Ajadi SS, Melong, Dolakha; Tamakoshi Janajagriti SS, Kemtey Ramechap; Shree SS, Jamirey kahni, Ramechap & Janashudhar LSS, Sindhupalchowk require realignment	Will be undertaken before the closure of the construction activities and handing taking over of the sites
4	Records of grievance redressal	No one has filed grievance as yet	Grievance record books maintained by all GRCs
5	Temporary relocation of hawkers and vendors	No hawkers and vendors existed in any site	
<b>C. Social measures during construction as per contract provisions</b>			

S. N.	Resettlement Activities	Progress	Remarks
1	Prohibition of employment or use of children as labor	No under children engaged as labour in any site	
2	Prohibition of forced or compulsory labor	No forced labour observed	
3	Ensure equal pay for equal work to both men and women	Being complied	
4	Implementation of all statutory provisions on labor like health, safety, welfare, sanitation, and working conditions	Partially complied	Details are provided in Semiannual Environmental Monitoring Report
5	Maintenance of employment records of workers	Contractors have maintained workers employment record.	

#### **4. Status of Other Social Activities**

23. Regular consultations and meetings are being held by DLPIU and DSC with stakeholders and School Management Committee (SMC) and other stakeholders to facilitate implementation of social safeguards component. Besides these, the other social activities such as campsite management, health and safety measures, wage rate to construction workers and issue of child labor have been regularly monitored. Orientation on awareness in maintaining compliances of the social activities as per social safeguard documents of the project was provided to contractor. Further, Standard Operating Procedure (SOP) prepared by NRA in order to avoid and minimize risk from COVID-19 pandemic has been distributed and oriented contractor in order to follow strictly during the construction.

#### **5. Monitoring and Reporting Arrangements**

24. Regular monitoring activities are being carried out for assessing resettlement progress and identifying potential difficulties and problems during the construction of school buildings under Recon-1 and Recon-2 project schools. Safeguards and GESI monitors assigned in each project district have been involving in monitoring for the GESI and Social aspects. DSC-safeguards monitors have carried out 253 times field visit during the reporting period for assessing resettlement progress and identifying potential difficulties and problems and to monitor safety issues during construction. Further, the monitors inspected for the construction of disable friendly toilets, installation of ramps, and incinerator, installation of information boards as well as signboards related to health and safety during construction. Further, monitoring to avoid child labor, employment opportunity to locals and equal wages to women etc. have also been carried out.

25. Internal monitoring at school level have been under taken by the DLPIUs with the support from safeguards monitors of DSC visiting every schools every month for monitoring frequently using a checklist prepared by DSC and has been submitted social safeguards performance through quarterly progress report. The quarterly progress report contains summary of progress as well as compliance, and annex attached for detail status disaggregated by school. No any grievances and social issues identified or occurred during this reporting period due to construction of school.

#### **6. Grievance Redress System and Mechanism**

26. Grievance redress Committee (GRC) at the project level is in place. It is a three tier mechanism to address grievances related to nearby community or indirect APSs in the implementation of the project. GRCs at other levels will be formed during the implementation of the project as mentioned in the RF and DDR.

## 6.1 Redressed of Grievances

27. A Grievance Redress Committee (GRC1) at school level (all schools under Recon-1) have been established. Similarly, GRC-2 and Safeguards Desks have been established in all DLPIUs under Recon-1 districts; whereas, establishing GRC2 and Safeguards Desks is also ongoing in DLPIUs and schools under Recon-2.

## 6.2 Current Status of GRM

28. As per the provisions described above GRC2 and safeguards desks have been established in all DLPIUs except Makwanpur, Dhading, and Nuwakot. Altogether 9 out of 107 Schools under Recon-2 have formed GRC 1 in their respective schools. Grievance register books will be maintained by schools with details of grievances, registration date, and name of complainant and contact address. So far, no grievance has been received in any of the GRCs. Details of GRC status are provided in the following table.

**Table 3: Summary of GRC1, GRC2 and Safeguards Desk formation under Recon-2**

Sn.	District Name	Number of Recon-2 schools	Formation of GRC1 at School level	Formation of GRC2 at DLPIU level	Formation of Safeguards Desk at DLPIU
1.	Sindhuli	15	-	Established	Established
2.	Okhaldhunga	13	-	Established	Established
3.	Gorkha	4	-	Established	Established
4.	Makwanpur	3	1	-	-
5.	Dhading	5	2	-	-
6.	Nuwakot	6	6	-	-
7.	Kavrepalanchowk	9	-	Established	Established
8.	Dolakha	11	-	Established	Established
9.	Ramechhap	17	-	Established	Established
10.	Kathmandu	9	-	Established	Established
11.	Bhaktapur	7	-	Established	Established
12.	Sindhupalchowk	8	-	Established	Established
	<b>Total</b>	<b>107</b>	<b>9</b>	<b>9</b>	<b>9</b>

**Table 4: Project safeguard support team**

S.	Name	Designation/Office	Email Address	Roles	
	<b>CLPIU</b>				
1.	Youb Raj Paudyal	Deputy Project Director, CLPIU	<a href="mailto:yrpauldyal@gmail.com">yrpauldyal@gmail.com</a>	Implementing agency and will look after the overall safeguards compliance of the project.	
2.	Udhab Nepal	Civil Engineer, CLPIU	<a href="mailto:Edhab73@gmail.com">Edhab73@gmail.com</a>		
3.	Suraj Parajuli	Engineer, CLPIU	<a href="mailto:surajparajuli327.sp@gmail.com">surajparajuli327.sp@gmail.com</a>	Environment Safeguards Focal Person	Safeguards Desk comprising focal persons at CLPIU will organize routine meeting at central and local levels, respectively, to review safeguard compliance performance, emerging issues, agree for corrective actions, and coordinate with technical team/contractors to implement them.
4.	Nirmila Devi mainali	Engineer, CLPIU		GESI/Social Safeguards Focal Person	
	<b>Name of DLPIU Unit Chief</b>				
1.	Arjun Rajamajhi	Kathmandu	<a href="mailto:arjuneji5@gmail.com">arjuneji5@gmail.com</a>	GRC2-Chair	To support and resolve complaints/grievances as

Simi annual Social Monitoring Report. January-June 2020

S.	Name	Designation/Office	Email Address	Roles	
2.	Guna Raj Pokharel	Lalitpur	pkrl.gunaraj@gmail.com	GRC2-Chair	quickly as possible at the local level through a process of consultation; and, if that is not possible, to provide clear and transparent procedures for appeal.  Responsible for monitoring compliance by using standard monitoring checklist prepared by ES for each individual school. The DLPIU will verify and submit safeguard monitoring report in a standard format to CLPIU and ADB. The reports will contain summary of work progress during the reporting period, quality of safeguards compliance, recommended corrective actions, and follow-up on corrective actions agreed in the last report.
3.	Bharat Bahadur Shrestha	Bhaktapur	shresthabb2001@yahoo.com	GRC2-Chair	
4.	Yuba Raj Bagale	Dhading	bagaleyb@gmail.com	GRC2-Chair	
5.	Dina Nath Gautam	Nuwakot	dngreddhankuta@gmail.com	GRC2-Chair	
6.	Bishnu Prasad Mishra	Gorkha	mishrabp53@gmail.com	GRC2-Chair	
7.	Badri Bahadur Pathak	Makawanpur	bpathak071@gmail.com	GRC2-Chair	
8.	Dwarika Prasad Pokharel	Kavrepalanchowk	dwarikapokharel164@gmail.com	GRC2-Chair	
9.	Govinda Raj Sedhai	Rasuwa	govindaraj.sedhai@gmail.com	GRC2-Chair	
10.	Yam Bahadur Khadka	Sindhupalchowk	khadkaybk@gmail.com	GRC2-Chair	
11.	Dev Kumar Baral	Dolakha	debkumarbaral@yahoo.com	GRC2-Chair	
12.	Shiva Kumar Sapkota	Sindhuli	sapkotashiba@yahoo.com	GRC2-Chair	
13.	Nirmal Kumar Ghimire	Ramechhap	nirmire@yahoo.com	GRC2-Chair	
14.	Bal Bahadur Karki	Okhaldhunga	balabahadurkarki@gmail.com	GRC2-Chair	
15.	Ajay Kr. Yadav	Engineer, DLPIU, Bhaktapur	ajay6456@gmail.com	Environment Safeguards Focal Person	Responsible for undertaking overall environmental social and GESI compliance in the subproject activities in the district.
16.	Shyam Babu Sha	Technical Assistant, DLPIU, Bhaktapur		GESI/Social Safeguards Focal Person	
17.	Rajendra Shrestha	Engineer, DLPIU, Dolakha	rajendra.stha158@gmail.com	Environment Safeguards Focal Person	
18.	Pratik Raj Karki	Engineer, DLPIU, Dolakha		GESI/Social Safeguards Focal Person	
19.	Sovit Shrestha	Engineer, DLPIU, Kavrepalanchok	sovit09086@gmail.com	Environment Safeguards Focal Person	
20.	Yadu Bikram Thapa	Engineer, DLPIU, Kavrepalanchok	<a href="mailto:yadu2038@gmail.com">yadu2038@gmail.com</a>	GESI/Social Safeguards focal person	

Simi annual Social Monitoring Report. January-June 2020

S.	Name	Designation/Of fice	Email Address	Roles	
21.	Sagar Paudel	Engineer, DLPIU, Kathmandu	poudelsagar47@gmail.com	Environment Safeguards Focal Person	
22.	Kopila Gyawali	Section Officer, DLPIU, Kathmandu		GESI/Social Safeguards focal person	
23.	Anil Kumar Yadav	Engineer, DLPIU, Sindhuli	yanil0070@gmail.com	Environment Safeguards Focal Person	
24.	Durga Prasad Kafle	Section officer, DLPIU, Sindhuli		GESI/Social Safeguards focal person	
25.	Sabin Lama	Engineer, DLPIU, Okhaldhunga	mrnibas09@gmail.com	Environment Safeguards Focal Person	
26.	Om Prasad Gautam	Section officer, DLPIU, Okhaldhunga		GESI/Social Safeguards focal person	
27.	Sundar Shyam Ghimire	Engineer, DLPIU, Ramechhap	ssghimire1971@gmail.com	Environment Safeguards Focal Person	
28.	Kumar Prasad Subedi	Non Gazzetted First class, DLPIU, Ramechhap		GESI/Social Safeguards focal person	
29.	Sher Bdr Pujara	Engineer, DLPIU, Sindhupalchwok	sherp7@gmail.com	Environment Safeguards Focal Person	
30.	Monika Joshi	Sub-Engineer, DLPIU, Sindhupalchwok		GESI/Social Safeguards focal person	
31.	Indra Lal Maharjan	Engineer, DLPIU, Lalitpur	imaharjan55@gmail.com	Environment Safeguards Focal Person	
32.	Bichari Prasad Adhikari	Section officer, DLPIU, Lalitpur		GESI/Social Safeguards focal person	
33.	Baburam Devkota	Engineer, DLPIU, Gorkha	baburamdevkota1@gmail.com	Environment Safeguards Focal Person	
34.	Jyoti Thapa Magar	Sub-Engineer, DLPIU, Gorkha		GESI/Social Safeguards focal person	
35.	Suman Pokhrel	Engineer, DLPIU, Nuwakot	sumanp_1981@yahoo.com	Environment Safeguards Focal Person	
36.	Bodhraj Pathak	Section officer, DLPIU, Nuwakot		GESI/Social Safeguards focal person	
37.	Achut Raj Neupane	Engineer, DLPIU, Rasuwa	neupane.achyut1990@gmail.com	Environment Safeguards Focal Person	
38.	Manohar Dhakal	Sub-Engineer, DLPIU, Rasuwa.		GESI/Social Safeguards focal person	



S.	Name	Designation/Of fice	Email Address	Roles	
39.	Sandeep Adhakari	Engineer, DLPIU, Makwanpur	ersaans@gmail.com	Environment Safeguards Focal Person	
40.	Harichandra Sapkota	Section officer, DLPIU, Makwanpur		GESI/Social Safeguards focal person	
41.	Nirmal Bogati	Engineer, DLPIU, Dhading	nirvikalpa2013bg@gmail.com	Environment Safeguards Focal Person	
42.	Sher Bahadur Khati	Sub-Engineer, DLPIU, Dhading		GESI/Social Safeguards focal person	
<b>3. DSC-Safeguards Experts</b>					
1.	Rikesh Chitrakar	Environment Safeguards Expert/KTM head quarter	<a href="mailto:chitrakar.rikesh@gmail.com">chitrakar.rikesh@gmail.com</a>	Implementation, monitoring and reporting of environmental safeguards works of DRSP Schools of L-3702 NEP	
2.	Ratna Meher Bajracharya	Social Safeguards Expert/KTM head quarter	<a href="mailto:ratna.mehar.b@gmail.com">ratna.mehar.b@gmail.com</a>	Guide and monitoring and supervision of social safeguards works of DRSP Schools of L-3702 NEP	
3.	Prakash Panday	GESI Expert/KTM head quarter	<a href="mailto:ppanday029@hotmail.com">ppanday029@hotmail.com</a>	Monitoring, supervision and implementation of GESI action plan of DRSP Schools of L-3702 NEP	
<b>3. DSC Safeguards and GESI Monitors</b>					
1.	Ambika Ghimire	Sindhupalchok	<a href="mailto:ambika.ghimire45@gmail.com">ambika.ghimire45@gmail.com</a>	Supporting the project in implementing environmental and social safeguards requirements by educating, and creating awareness at school level and district level. Monitors are also responsible for the collection of required data and monitoring during the construction phase.	
2.	Anjila Poudel	Okhaldhunga	<a href="mailto:anjilap620@gmail.com">anjilap620@gmail.com</a>		
3.	Deepa Katuwal	Gorkha	<a href="mailto:dipakat15@gmail.com">dipakat15@gmail.com</a>		
4.	Kapil Giri	Makwanpur	<a href="mailto:girikapil752@gmail.com">girikapil752@gmail.com</a>		
5.	Madan Acharya	Nuwakot	<a href="mailto:acmadan@gmail.com">acmadan@gmail.com</a>		
6.	Mingma Yangi Sherpa	Ramechhap	<a href="mailto:mingma155@gmail.com">mingma155@gmail.com</a>		
7.	Nabina Karki Gautam	Bhaktapur	<a href="mailto:karkinabina99@gmail.com">karkinabina99@gmail.com</a>		
8.	Nabina Tiwari	Kathmandu	<a href="mailto:tiwarina123@gmail.com">tiwarina123@gmail.com</a>		
9.	Perina Pathak	Dhading	<a href="mailto:perina.pathak15@gmail.com">perina.pathak15@gmail.com</a>		
10.	Roshan Poudel	Sindhuli	<a href="mailto:ros.pdl2003@gmail.com">ros.pdl2003@gmail.com</a>		
11.	Shova Subedi	Dolakha	<a href="mailto:shova9.subedi@gmail.com">shova9.subedi@gmail.com</a>		
12.	Stuti Shakya	Kavre	<a href="mailto:stutishakya@gmail.com">stutishakya@gmail.com</a>		

## 7. Activities carried out with Respect to Public Participation and Gender Action Plan and Implementation

### 7.1 GESI Action Plan Implementation:

29. A standard format and template that has been developed for collecting information

and addressing the safeguard and GESI and establishing comprehensive information on existing member of SMCs and details of schools teachers and students in sub-project schools. The template will be used to record required information of the schools and will serve as a basis for addressing GESI issues and community participation and consultations. GESI action plan is being fully implemented only after the mobilization of DRM consultant. The progress of Gender Equality and Social Inclusion Action Plan (GESI Action Plan) is submitted along with Quarterly Progress Report regularly.

## **7.2 Consultations and Information Disclosure:**

30. Public consultation program with key stakeholders has been carried out in line with the requirements pertaining to environmental and social considerations of ADB. During the detailed due diligence and update the master plan of school buildings discussion and consultation meetings were held with SMC and other relevant stakeholders. In total 102 consultation/coordination meeting with SMC and contractor in schools under Recon1 and Recon2 has been carried out during the reporting period. 743 participants were participated during the meeting and 211 (28.4%) participants were female out of the total.

31. During the consultation information about the project, including design of school buildings, disaster risk reduction infrastructure, and role of SMCs on construction has been discussed with the participants. Minute of Meetings of consultation are attached in Annex-1.

**Table 5: Details of Consultation Meetings with SMC and Stakeholders**

<b>S.N</b>	<b>Name of School &amp; Location</b>	<b>Date</b>	<b>Number of Participants</b>	<b>Discussion Agendas</b>
1	Buddha Secondary School, Kathmandu	19 January 2020	12 M-9, F-3	School Building Design, Disaster Risk Reduction Infrastructure requirement, Role of SMC
2	Kalika Devi Secondary School, Rammechhap	15 January 2020	21 M-19, F-2	School Building Design, Disaster Risk Reduction Infrastructure requirement, Role of SMC
3	Kalika Devi Secondary School, Rammechhap	15 January 2020	14 M-9, F-5	Effect on Nearby Temple
4	Maharudra Secondary School, Rammechhap	20 January 2020	13 M-10, F-3	School Building Design, Disaster Risk Reduction Infrastructure requirement, Role of SM
5	Maharudra Secondary School, Rammechhap	1 April 2020	29 M-17, F-12	Effect on Nearby Temple
6	Sataingeshwor Secondary School, Rammechhap	13 January 2020	8 M-7, F-2	Effect on Nearby Temple
7.	Sataingeshwor Secondary School, Rammechhap	23 March 2020	29 M-26, F-3	School Building Design, Disaster Risk Reduction Infrastructure requirement, Role of SM
8	Devithumka Secindary School, Kavre	26 May 2020	18 M-15, F-3	School Building Design, Disaster Risk Reduction Infrastructure requirement, Role of SM

Moreover, individual DDRs for 107 schools under Recon-2 scattered into 12 project districts has been updated and prepared during this reporting period. Individual DDR prepared for 13 schools selected from Okhaldhunga, 15 schools from Sindhuli, 17 schools from Ramechhap,

11 schools from Dolakha, 9 schools from Sindhupalchowk, 7 schools from Bhaktapur, 9 schools from Kathmandu, 5 schools from Dhading, 4 schools from Gorkha, 3 schools from Makawanpur, and 6 schools from Nuwakot. Consultation meeting with School Management committee (SMC) of each selected schools was carried out prior to the preparation of individual school DDR. Minute of the meeting has been compiled in DDR prepared for each school. All the meeting minutes were culminated in positive notes for the reconstruction of damaged school buildings, disclosing adequate land for the reconstruction and ownership status of land area occupied by the school proposed for the reconstruction, addressing issues related to socio-cultural if place of worship existed within or close to school premises etc.

Further, package wise consolidated DDR have been prepared for construction packages and disclosed into ADB website prior to award of contract to construction contractor. Altogether, 9 consolidated DDRs have been prepared, such as consolidated DDR for package 1 comprise schools of Sindhuli, DDR for package 2 comprise schools of Okhaldhunga, package 3 comprise schools of Gorkha and Makwanpur. Similarly, package 4 comprise schools of Dhading and Nuwakot, package 5 comprise schools of Kavrepalanchowk, package 6 comprise schools of Dolakha, package 7 comprise schools of Ramechhap and package 8 comprise schools selected from Kathmandu and Bhaktapur and package 9 comprise school selected from Sindhupalchowk.

# Annexes







१. आम जनता  
 २. आम जनता  
 ३. आम जनता  
 ४. आम जनता  
 ५. आम जनता  
 ६. आम जनता  
 ७. आम जनता  
 ८. आम जनता  
 ९. आम जनता  
 १०. आम जनता  
 ११. आम जनता  
 १२. आम जनता  
 १३. आम जनता  
 १४. आम जनता  
 १५. आम जनता  
 १६. आम जनता  
 १७. आम जनता  
 १८. आम जनता  
 १९. आम जनता  
 २०. आम जनता  
 २१. आम जनता  
 २२. आम जनता  
 २३. आम जनता  
 २४. आम जनता  
 २५. आम जनता  
 २६. आम जनता  
 २७. आम जनता  
 २८. आम जनता  
 २९. आम जनता  
 ३०. आम जनता  
 ३१. आम जनता  
 ३२. आम जनता  
 ३३. आम जनता  
 ३४. आम जनता  
 ३५. आम जनता  
 ३६. आम जनता  
 ३७. आम जनता  
 ३८. आम जनता  
 ३९. आम जनता  
 ४०. आम जनता  
 ४१. आम जनता  
 ४२. आम जनता  
 ४३. आम जनता  
 ४४. आम जनता  
 ४५. आम जनता  
 ४६. आम जनता  
 ४७. आम जनता  
 ४८. आम जनता  
 ४९. आम जनता  
 ५०. आम जनता  
 ५१. आम जनता  
 ५२. आम जनता  
 ५३. आम जनता  
 ५४. आम जनता  
 ५५. आम जनता  
 ५६. आम जनता  
 ५७. आम जनता  
 ५८. आम जनता  
 ५९. आम जनता  
 ६०. आम जनता  
 ६१. आम जनता  
 ६२. आम जनता  
 ६३. आम जनता  
 ६४. आम जनता  
 ६५. आम जनता  
 ६६. आम जनता  
 ६७. आम जनता  
 ६८. आम जनता  
 ६९. आम जनता  
 ७०. आम जनता  
 ७१. आम जनता  
 ७२. आम जनता  
 ७३. आम जनता  
 ७४. आम जनता  
 ७५. आम जनता  
 ७६. आम जनता  
 ७७. आम जनता  
 ७८. आम जनता  
 ७९. आम जनता  
 ८०. आम जनता  
 ८१. आम जनता  
 ८२. आम जनता  
 ८३. आम जनता  
 ८४. आम जनता  
 ८५. आम जनता  
 ८६. आम जनता  
 ८७. आम जनता  
 ८८. आम जनता  
 ८९. आम जनता  
 ९०. आम जनता  
 ९१. आम जनता  
 ९२. आम जनता  
 ९३. आम जनता  
 ९४. आम जनता  
 ९५. आम जनता  
 ९६. आम जनता  
 ९७. आम जनता  
 ९८. आम जनता  
 ९९. आम जनता  
 १००. आम जनता

1. विधानसभा नाम  
 2. विधानसभा नाम  
 3. विधानसभा नाम  
 4. विधानसभा नाम  
 5. विधानसभा नाम  
 6. विधानसभा नाम  
 7. विधानसभा नाम  
 8. विधानसभा नाम  
 9. विधानसभा नाम  
 10. विधानसभा नाम  
 11. विधानसभा नाम  
 12. विधानसभा नाम  
 13. विधानसभा नाम  
 14. विधानसभा नाम  
 15. विधानसभा नाम



Meeting Minute for no obstruction in building construction due to presence of temple,  
Kakila Devi SS, Ramechhap

आज मिति २०७६ साल माघ १ गते बुधबस्को द्वि  
यस श्री कालिका देवी माध्यमिक विद्यालय केरालीको  
विद्यालय व्यवस्थापन समितिको साधे स्थानीय बुद्धिजीवी,  
प्रभिमार्तकहरुको संयुक्त बैठक समितिका अध्यक्ष ज्येष्ठ  
सदस्य श्री दिपक कुमार पौडेलको अध्यक्षतामा वरी  
प्रस्तावित प्रस्तावहरु सम्वन्धमा हुलफल गरी निर्णय  
गर्ने सहमतिमा बैठक शुरु गरियो ।

उपस्थित

१. अध्यक्ष : दिपक कुमार पौडेल
२. सदस्य : सिताराम पौडेल
३. सुनिमला पौडेल
४. स. : उर्मिला आले
५. स. (वडाध्यक्ष) : निर बहादुर श्रेष्ठ
६. स. (शिक्षक) : कृष्णप्रसाद ढकाल
७. स. सचिव : नरसिंह कुमार खड्का

आमन्त्रित

८. पूर्ण बहादुर खड्का
९. राम बहादुर खड्का
१०. कृष्णकुमार कार्की
११. प्रवन्त पौडेल
१२. निलकण्ठ श्रेष्ठ
१३. शेर बहादुर साकी
१४. विजय बुढाथोकी
१५. कृष्ण बहादुर श्रेष्ठ
१६. श्याम बहादुर बस्नेत
१७. मोरारान बुढाथोकी
१८. शिर बहादुर खड्का
१९. अर्जुन कुमार पौडेल
२०. मोहन नेपाली
२१. पूर्ण बहादुर बस्नेत

कमरा :

प्रस्तावहरू

१. मन्दिर पुनः निर्माण गर्ने सम्बन्धमा
२. स्वयंसेवक शिक्षक नियुक्ति गर्ने सम्बन्धमा
३. मन्दिरको शिक्षक तालिमका लागि खर्च माग गर्ने सम्बन्धमा
४. विद्यालय सेवाको मुलबाँटा मर्मतका लागि खर्च माग गर्ने सम्बन्धमा

निर्णयहरू

⇒ निर्णय नं. १, प्रस्ताव नं. १ सम्बन्धमा छलफल गर्दा यस श्री कालिका देवी मा.वि. प्राङ्गणमा रहेको श्री शिवेश्वर महादेवको मन्दिरले यस विद्यालयलाई कुनै असर नगर्ने तथा विद्यालयको तर्फबाट पनि मन्दिर पुजाइजामा कुनै बाधा नपर्ने भएकोले विद्यालय पुनर्निर्माण कार्य खाँचि बढाउनुका लागि ADB समक्ष अनुरोध गर्ने निर्णय पारित गरियो ।

⇒ निर्णय नं. २, प्रस्ताव नं. २ सम्बन्धमा छलफल गर्दा यस विद्यालयमा शमेक्षाप न.पा.बाट परीक्षा लिई उत्तीर्ण हुनुभएका गोरखा जिल्ला का श्री राजय देवकोटालाई मिति २०७६ चैथ १० गते देखि लागू हुने गरी नगरपालिकाको स्वयंसेवक शिक्षक भर्ना नियमानुसार न.भ. पाउने गरि करार नियुक्ति दिने निर्णय पारित गरियो ।

प्रश्न ।



⇒ निर्णय नं. ३, प्रस्ताव नं. ३ सम्बन्धमा इलाफल गर्दा यस विद्यालयमा श.स. २०६६ देखि मन्त्रेश्वरी विद्युत्बाट पठनपाठन गर्ने निर्णय भएकोले शिक्षकलाई मन्त्रेश्वरी तालिममा पढाइको लागि आवश्यक पर्ने रकम सहित प्रस्तावना तयार गरी रामेछाप न.पा. २ नं. वडा कार्यालयमा पेश गर्ने निर्णय पारित गरियो ।

⇒ निर्णय नं. ४, प्रस्ताव नं. ४ सम्बन्धमा इलाफल गर्दा यस विद्यालय सेवा क्षेत्र मा रहेको झुलवाटा धेरै लम्बो समय देखि भर्ना नभएकोले भर्ना जावत गर्ने कठिनाई परेको हुँदा हो बाट भर्ना गर्नेको लागि आवश्यक बजेट विनियोजन गर्ने आ.व. ०६६/६७ मा प्रस्तावनासहित वडा कार्यालय रामेछाप न.पा. २ मा पेश गर्ने निर्णय गर्दै आजको बैठक समाप्त गरियो

*(Signatures)*

प्रमुख *(Signature)* *(Signature)* *(Signature)*  
 उपप्रमुख *(Signature)* *(Signature)* *(Signature)*  
 शिक्षक *(Signature)* *(Signature)* *(Signature)*  
 विद्यार्थी *(Signature)* *(Signature)* *(Signature)*

आज मिति २०७६ साल चैत्र १२ गुतेकादिने  
यस श्री कालिका देवी मा. वि.को विद्यालय  
व्यवस्थापन समितिको बैठक विन्ध्य सक्का  
अध्यक्ष श्री दिपक कुमार पौडेलको अध्यक्षता  
नामा बैठक बसी निम्न प्रस्तावहरू माघि-  
कलफल गरी निर्णय गरीयो ।

नपस्विल

अध्यक्ष - श्री दिपक कुमार पौडेल

स्वस्थ - १ सुताराम पौडेल

" - २ उमोला आलेमगर

" - ३ बिमला पौडेल

" - ४ विजय कुमार कुलथोकी

" - ५ हरिता नेपाली

शिक्षक प्रतिनिधि - कृष्ण प्रसाद खकाल

सचिव - १ जयपि कुमार खड्का

वडा अध्यक्ष - १ निर बहादुर खड्का

शिक्षक - १ शिव वी खड्का

" - १ सुमिल

" - २ धुव कुमार खड्का

" - ३ मोहन " पौडेल

" - ४ जमुना

" - ५ कृष्ण कुमारी काकी

मानव संरक्षण अध्यक्ष - १ राम कुमार पौडेल

बालकलव अध्यक्ष - १ खैतराज श्रेष्ठ

विद्यार्थी अभिभावक - १ सुरमा बस्नेत

अभिभावक प्रतिनिधी - १ दुर्गा वी खड्का



## प्रस्तावहरू

१. विद्यालय हाता भित्र भएको मन्दिरको विवरण खुलाउने सम्बन्धमा ।

### निर्णय

निर्णय नं.१ प्रस्ताव नं.१ माथि हलफल गर्दा यस श्री कालिका देवी माठवि देउराली का हाता भित्र रहेको शिद्धिदेव महादेव मन्दिर ले यस विद्यालयमा प्रतष्ठाकृपमा हानी नोक्सानी नभएपनि वर्षको शक्ति मात्र प्रभाव पार्दछ साथै अन्य सत्रपा कुनै पनि असर नपर्ने व्यहोरा जानकारी गराइ यस मन्दिर सम्बन्धि विवरण निम्न अनुसार रहेको छ ।

क) मन्दिर/देवताको नाम - श्री शिद्धिदेव महादेव  
ख) विद्यालयको नाम - श्री कालिका देवी माठवि देउराली वडा नं.२ रामेछाप नगरपालिका जिल्ला रामेछाप ।

ग) धर्म रंग सम्बन्धित - हिन्दु धर्म  
घ) मन्दिर स्थापना मिति - २०२३/०६/२३  
ङ) मन्दिरले चर्चाएको जग्गाको स्वामित्व - विद्यालयक नाममा रहेको प्रमाण भएको ।

च) मन्दिरको मौलिक संरचनाको किम्वदन्त - कच्ची भवन हाल भूकम्पले क्षति भएको अवस्थामा रहेको ।


छ) मन्दिरको संस्थापक - संस्था (महादेव सेवा समिति)  
ज) मन्दिरको इतिहासिक पृष्ठभूमि -



- सम्पन्न यस देउरालीका बुद्धिजीवी, समाज सेवी, जनताहरू मिलेर निर्माण गरिएको।
३. मन्दिर रंग जोडिएका समुदायः क्षेत्री बाहुन, नेवार, सार्की, वमाइ आदि।
- १०) धार्मिक सांस्कृतिक कार्य हुने महिना र अवधि शौच विद्यालयको क्रियाकलापमा पर्ने असरः- कार्तिक महिना मा पर्ने हरिवोधनी शुक्रवारी, तीज (भाद्र महिना) मात्र हुने मात्र दुई दिन विद्यालयमा असर पर्ने अन्य दिनहरूमा कुनै पनि असरहरू नपर्ने।
- ११) मन्दिरको प्रभाव क्षेत्र न रकुल क्षेत्र
- १२) मन्दिर संचालन प्रक्रिया नः समुदाय बाट
- १३) मन्दिर विद्यालय हाताभित्र हो वा, बाहिरः विद्यालय हाताभित्र रहेको।
- १४) विद्यालय पुनर्निर्माण अवधिमा पर्ने जाने प्रभावः- भुक्तम्प बाट जिने देखिने हुदा बिद्ध विज्ञ इन्जीनियर बाट मात्र मापन गर्ने सार्किन। सामान्य कच्ची भएकाले जोगा हुने भन्दा पनि पुन निर्माण भए अतिरिक्त राम्रो हुने थियो। यदि हराउनु पर्ने अवस्था नभए यहाका समुदाय बाट पनि सहयोग कार्य हुने।
- १५) मन्दिर कार्य बाट कुनै पनि अवरोध नभए सहयोगका लागि अघि बढ्न भनि सर्वसाधारण बाट या फलाम आदि व्यापक फलफल गरी निर्णय जारीयो।

१६) मन्दिर कार्य बाट कुनै पनि अवरोध नभए सहयोगका लागि अघि बढ्न भनि सर्वसाधारण बाट या फलाम आदि व्यापक फलफल गरी निर्णय जारीयो।

Meeting minute for no obstruction in building construction due to presence of temple,



“छोटा सहर छोटीलाई पनि विद्यालय पठाऔं”

SHREE KALIKA DEVI SECONDARY SCHOOL

देउराली-९, रामेछाप

Deurali-9, Ramechhap

स्था:-२०३१

विद्यालय कोड नं. ३१०१३०००६

पत्र संख्या : २०६६/६६

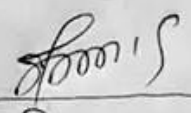
चलानी नं. : ५९

मिति : २०६६/१२/१२

विषय : विवरण पेरा गरिएको सम्बन्धमा ।

श्री जिल्ला स्मारो जता कार्यालयत इकाई रामेछाप ।

प्रस्तुत विषयको सम्बन्धमा त्यस कार्यालयको मिति २०६६/१२/१० को च.नं. २२१ को प्राप्त पत्र अनुसार यस विद्यालय पुननिर्माण हुने सम्बन्धमा यस विद्यालयको हता भित्र रहेको शिष्टेश्वर महादेव मन्दिरको विवरण उपलब्ध गराइनु पर्ने भएकोले विद्यालयको वि.नं.स. वैठक बसी विभिन्न विषयमा छलफल गरी विवरण तयार पारी निर्णय प्रतिलिपी यसै साथ संलग्न गरी मन्दिरको ढोहो सहित विवरण पठाइएको व्यहोरा अनुशेष छ ।



केशिकुमार राउत  
(प्र.अ.)



**Maharudra SS, Ramechhap**

आज मिति २०७६ साल माघ ७ गते मंगल  
बारका दिन यस श्री महाद्वारा माध्यमिक विद्यालय बोलड बोलडको  
नव उठित वि. व्य. सं. अध्यक्ष श्री लोक बहादुर थापा मगर  
ज्यूको अध्यक्षतामा वि. व्य. सं. र शि. अ. सं. को संयुक्त बैठक  
वसि विविध विषयमाथि छलफल गरि निर्णय पारित गर्ने तपसिल  
का व्यक्तिहरुको उपस्थिति रहयो।

तपसिल

१. वि. व्य. सं. अध्यक्ष - श्री लोक बहादुर थापा मगर ~~सदस्य~~  
२. " " " " - श्री दिव्य बहादुर ~~सदस्य~~  
३. " " " " - श्री ठरुणा थापा मगर ~~सदस्य~~  
४. " " " " - श्री रेणुका ~~सदस्य~~  
५. " " " " - श्री बल बहादुर मगर ~~सदस्य~~  
६. " " " " - श्री गिता सुनुवार ~~सदस्य~~  
७. " " " " - श्री दुपेन्द्र बहादुर तामाङ ~~सदस्य~~  
८. शिक्षक प्रतिनिधि - श्री नरेन्द्र तामाङ ~~सदस्य~~  
९. सकेन सदस्य वचिव - श्री पद्म बहादुर मगर ~~सदस्य~~  
१०. शि. अ. सं. अध्यक्ष - श्री हविलाल म्या. मगर ~~सदस्य~~  
११. " " " " - श्री राज कुमार मगर ~~सदस्य~~  
१२. " " " " - श्री सुर्यकुमारी म्या. मगर ~~सदस्य~~  
१३. " " " " - श्री बरुण बहादुर थापा मगर ~~सदस्य~~

प्रस्तावहरु

१. मन्दिर सम्बन्धमा।





**श्री महाशुद्ध माध्यमिक विद्यालय बोलङ-बोलङ**  
**Shree Maharudra Secondary School Bolang Bolang**  
 रामेछाप त पा वडा नं - ४, हिमगंगा, रामेछाप  
 Ramechhap Municipality-4, Himnagar, Ramechhap  
 स्थापना (Estd. 2017)

विषय : विवरण पठाइएको बारे ।

प्रस्तुत विवरणमा रामेछाप नगरपालिका वडा नं ४ स्थित यस श्री महाशुद्ध माध्यमिक विद्यालय बोलङ बोलङ मा DRSP-II अन्तर्गत विद्यालय पुनर्निर्माण कार्यक्रममा विद्यालय हाताभित्र रहेको मन्दिरलाई हटाई पनि सम्पत्ति प्रभाव नगर्ने भएकाले विद्यालय शिक्षक, स्थानीय समूह, मन्दिर निर्माण समिति, शिक्षा संघ र वडा जनप्रतिनिधित्वको बैठकको निर्णय प्रतिनिधि र मन्दिरको धोती मिलाएर पेश गरेको व्यहोरा अनुसूचित गरिन्छ ।

१. विद्यालयको नाम : श्री महाशुद्ध मा.वि बोलङ बोलङ  
 ठेगाना : रामेछाप नगरपालिका वडा नं ४, हिमगंगा  
 जिल्ला : रामेछाप  
 २. मन्दिरको नाम : महाशुद्ध मन्दिर  
 ३. कुन धर्मसँग सम्बन्धित : हिन्दु  
 ४. मन्दिर स्थापना मिति : २०७५ साल  
 ५. मन्दिरले चर्चिएको जग्गाको स्वामित्व : विद्यालयको  
 ६. मन्दिरको भौतिक संरचनाको विवरण : कच्ची  
 ७. मन्दिरको संस्थापक : महाशुद्ध मा.वि  
 ८. मन्दिरको ऐतिहासिक पृष्ठभूमि : विद्यालय स्थापना गर्दा जग्गालेमा स्थानीय बुद्धिनिधी, शम्भुलालको निवासमा एउटा विद्यालय व्यवस्थापन गर्ने लक्ष्य राखेरले धार्मिक, सांस्कृतिक महत्त्वलाई जोड दिई सांस्कृतिक हिमगंगा मा.वि.को वडाहरू ७, ८, ९ को सिमानामा रहेको माने बाँडालाई जोडेर महाशुद्ध (देवस्थान) विद्यालयको नाम राख्न गएको हो ।  
 ९. मन्दिरसँग जोडिएको समुदाय : मगर  
 १०. धार्मिक, सांस्कृतिक कार्य हुने महिला अवधि : विद्यालयको कार्यक्रमसँग र सरस्वती पूजा  
 ११. मन्दिरले प्रभाव पार्ने क्षेत्र : विद्यालय  
 १२. मन्दिर संचालन प्रक्रिया : विद्यालय  
 १३. मन्दिर विद्यालय हाताभित्र हो वा बाहिर : विद्यालयको मन्दिर भएकोले विद्यालय हाताभित्र रहेको छ ।  
 १४. विद्यालय पुनर्निर्माण अवधिमा पर्ने जाने प्रभाव (जस्तै मन्दिर भत्कने नभत्कने मन्दिरमा कसरी जाने मन्दिरका कार्यलाई पुनर्जाने अवरोध आदि) : यस महाशुद्ध देवस्थान पछिल्लो अर्को हाईमा भएको र वि.सं. २०७५ सालमा मा.वि. विद्यालय भौतिक प्रकृति मन्दिर निर्माण गर्दा राखेको विद्यालय अन्तर्गत पुनर्निर्माण सम्बन्धमा भएकोलाई जसरी रहेको भएतापनि अर्को हाईमा जाने भएकाले र जसरी रहेको छ ।

प्रमाणित  
 (प्रमाणित)  
 प्रमाणित

Page No.:  
 Date:

आजमिनि २०२० साल चैत्र ११ गते यस भौ महारुद्र साहसमिक विद्यालय बोल्ड-बोल्ड-डो विद्यालय व्यवस्थापन समिति आह्वान भौ लोकबहादुर थापा मगर को अध्यक्षतामा वि. व्य. सु. वि. अ. दैत्य हौक बडी तपासिना अनुयायिओ अफिहकुलाई पनि छपासिने गरार्इ निर्णय पारित गरियो ।

उपस्थिति:

१. वि. व्य. सु. आह्वान भौ लोकबहादुर थापा मगर
२. " सदस्य भौ डिकबहादुर मगर
३. " " भौ रेनुका थापा मगर
४. " " भौ उडुवा थापा मगर
५. " " भौ बल बहादुर मगर
६. " " भौ गिता सुनुवार
७. " " भौ दुपेन्द्र के तामाङ (बडा अध्यक्ष)
८. विरुद्ध प्रविनेधी भौ तरेन्द्र तामाङ
९. सदस्य सचिव भौ पदमबहादुर मगर
१०. वि. अ. सु. आह्वान भौ हविलाल क्याप्डाकी मगर
११. " सदस्य भौ धनबहादुर थापा मगर
१२. " " भौ अखिल मगर
१३. " " भौ नेत्र बहादुर क्याप्डाकी मगर
१४. " " भौ सुकुमाया मगर
१५. " " भौ गिता माया मगर
१६. " " भौ सुर्ज कुमारी क्या. मगर
१७. सदस्य सचिव भौ कुल बहादुर थापा मगर
१८. विरुद्ध भौ दीपा कुमारी आले मगर
१९. " भौ दुर्गा माया मगर
२०. " भौ ममला क्याप्डाकी मगर
२१. " भौ मोहन बहादुर धातुक
२२. " भौ रविता कुमारी बोहरा
२३. " भौ आरती थापा मगर
२४. " भौ हिम कुमारी क्याप्डाकी मगर
२५. " वि. व्य. सु. आह्वान भौ मित्र बहादुर पुवडी ने
२६. " " भौ विना बहादुर मगर



	Page No: Date:
--	-------------------

26. पूर्व वि. वि. द. अध्यक्ष श्री नर वहादुर मगर 26/1  
 27. विद्यार्थी प्रतिनिधि श्री महेन्द्र थापा मगर 27/1  
 28. अभिभावक श्री हुमान मान्य 28/1

**प्रस्ताव:**

१. विद्यालयको हाताभित्र मन्दिर सम्बन्धमा।

**नि. न. प. प्रस्ताव नं. १ माथि छलफल गर्दा वातावरणी प्रवेश रामेहाप जिल्ला रामेहाप नगरपालिका वडा नं. ४ स्थित यस श्री महाकुद्र माध्यमिक विद्यालय बोलुङ बोलुङको विद्यालय हाताभित्र रहेको महाकुद्र मन्दिर हिन्दु धर्मका सम्बन्धित रहेको साथै विद्यालय स्थापना काल देखि महाकुद्र देवताको प्रतीक एउटा खुम्बुनी रहेको मा वि. द. २०७१ सालमा मात्र विद्यालयको स्वामित्वमा रहेको अगामा कच्ची मन्दिर निर्माण गरी हाल यस महाकुद्र देवस्थान एवम् मन्दिरको संरक्षण पनि श्री महाकुद्र मा. वि. ले नै गरिरहेको र विद्यालयले अभिभावकहरूको लागि विद्यालयको लागि कोत्सव र सरस्वती प्रभा मा मात्र मन्दिर खुला गर्दै आइरहेकोले श्री महाकुद्र मा. वि. को हाताभित्र रहेकोले अब (DRSP-11) खम् (AD B) ले विद्यालय पुनर्निर्माण गर्ने सुझावमा कुनै पनि किर्दिले अझ नगर्ने लक्ष्य राखि तयारले अनुसारको विवरण खुलाई जिल्ला आयोजना समन्वय न इकाई (सिद्धा) रामेहापमा पेश गर्ने निर्णय पारित गरियो।**

**तयारिले:**

१. विद्यालयको नाम: श्री महाकुद्र माध्यमिक विद्यालय बोलुङ बोलुङ  
 \* ठेगाना: रामेहाप नगरपालिका वडा नं. ४, रामेहाप

२. मन्दिरको नाम: महाकुद्र  
 ३. कुन धर्मका सम्बन्धित: हिन्दु  
 ४. मन्दिरको स्थापना: २०७१ सालमा (कच्ची)  
 ५. मन्दिरको चर्चिएको अगामाको स्वामित्व: श्री महाकुद्र मा. वि.  
 ६. मन्दिरको मौलिक संरचनाको किर्दिले: कच्ची  
 ७. मन्दिरको स्थापक: श्री महाकुद्र मा. वि.  
 ८. मन्दिरको ऐतिहासिक पृष्ठभूमि: विद्यालय स्थापना तथा कालान्तरमा स्थानीय बुद्धिजीवी, समाजसेवी, शिक्षाप्रेमी एवं विद्यार्थी

Page No.:  
 Date:

व्यवस्थापन गर्ने तैयारी गर्नेहरूले धार्मिक सांस्कृतिक महिमालाई  
 जोड दिई तत्कालिन विभागा शा. वि. को वडा नं. ६२८  
 को हिमातामा रहेको मान्ने डाँडालाई मान्ने मान्ने भन्दा भन्दै  
 महाकुट्ट (देवस्थान) देवताको नाम रहन गएको हो।

९. मन्दिर रंग जौडिएको समुदाय: मगर

१०. धार्मिक सांस्कृतिक कार्य हुने महिना अवधि: विद्यालयको  
 वार्षिकोत्सव र राखवती पुजा

११. मन्दिरको प्रभाव पार्ने क्षेत्र: - विद्यालय

१२. मन्दिर सन्चालन प्रक्रिया: विद्यालय

१३. मन्दिर विद्यालय हाताभित्र हो वा बाहिर: विद्यालयकै मन्दिर  
 भएकाले विद्यालय हाताभित्र रहेको छ।

१४. विद्यालय पुननिर्माण अवधिमा पर्ने मान्ने प्रभाव (जस्तै मन्दिर  
 भत्कने नभत्कने मन्दिरमा कसरी मान्ने मन्दिरको कार्यलाई पुग्ने  
 मान्ने अवरोध आदि: यस महाकुट्ट देवस्थान पहिले अर्को छडमा  
 भएको र वि. ६२०६९ सालमा मात्र विद्यालय नजिक कच्ची  
 मन्दिर निर्माण गरी राखेकोले विद्यालय भवन पुननिर्माण  
 सुरु भएमा भवनलाई अझर बाहिर भत्काएर अर्को ठाउँमा सार्ने  
 गिर्ने र राख्ने रहेको छ।

*[Signature]*  
 विभागा शा. वि.

*[Signature]*  
 वि. २०७१

*[Signature]*  
 वि. २०७१

*[Signature]*  
 वि. २०७१

*[Signature]*  
 वि. २०७१

*[Signature]*  
 वि. २०७१

*[Signature]*  
 वि. २०७१

*[Signature]*  
 वि. २०७१

*[Signature]*  
 वि. २०७१

*[Signature]*  
 वि. २०७१

*[Signature]*  
 वि. २०७१

*[Signature]*  
 वि. २०७१



**Meeting Minute for no obstruction by building construction in the temple, Satalingeshwor SS, Ramechhap**

आज मिति २०६८ साल चैत्र २८ गते यहाँ श्री  
 शतलिङ्गेश्वर माध्यमिक विद्यालय गुहरी, सुनापति-१  
 रामेछापको विद्यालय व्यवस्थापन समितिमा अध्यक्ष श्री  
 चण्डेश्वर चौलागाईंको अध्यक्षतामा बसेको विद्यालय  
 व्यवस्थापन समितिमा वरिष्ठ महापौर प्रस्ताव उपर  
 फैलकल भएको निर्णय लिइयो।

**उपस्थित**  
 [१] अध्यक्ष श्री चण्डेश्वर चौलागाईं  
 [२] सदस्य श्री कमलबहादुर चौलागाईं  
 [३] सदस्य श्री हेमबहादुर मगर  
 रुपरानी [४] सदस्य श्री रुपरानी तामाङ  
 [५] सदस्य श्री मसली मोतम, गसालि  
 रानी [६] सदस्य श्री रोजिता मगर  
 [७] सदस्य श्री जीवताप मोतम  
 [८] सदस्य श्री सुनाप चौलागाईं

**प्रस्ताव तथा निर्णयहरू**  
 प्रस्ताव नं. १. देवी मन्दिर सँग भग्ना  
 निर्णय नं. १. प्रस्ताव नं. १. माथि फैलकल गर्दा  
 यहाँ विद्यालयको परिसरमा पत्र चढाएर देवीको  
 मन्दिर रहेको, उक्त मन्दिरमा विशेष ध्यानमा  
 राखेर साधारण भाई पूजा आजा गरे गरेका र उक्त  
 क्रियाकलापले विद्यालयलाई र विद्यालयका लागि  
 सबै साधारणलाई हुने पनि प्रभावको बाधा नहुने  
 कारणमा A.B.डी कन्सल्टेन्सी (Consultancy)  
 मा अनुरोध गरे निर्णय गरियो।

**प्रस्ताव नं. २. भत्ता**  
 (भावना) परेको बेला पूरा नगरेको भएतापनि  
 केही भएतापनि निर्णय गरियो।

सुनापति  
 रानी  
 गसालि  
 रुपरानी

[illegible]

उपाधि

193 श्री चंडेवर चौतणई, वि. २००१ एनम वजि. १ मजक

Q. 2) श्री उमलवाहा (पन्नागई वि-08) सं.

② संयुक्त राज्य (यूनाइटेड स्टेट्स ऑफ अमेरिका)

⑧ प्रमाण दर्श २३१.५ पाँला ११.५

(७) संप्रदायवादी यात्राद्वारा धार्मिक

④ ६. वि. ए. ए. सातुगु आर गह

सं वि. वास्तु मंत्र एतत्

ਜਿਸ ਵਿੱਚ (੮) ਫਿਸਟਿਕ ਅਤੇ ਸਿਨਾਮੋਨਿਨ ਪ੍ਰਮਾਣਿਕਤਾ

3) वि. एण्ड. वि. विद्या लॉ ला गदि वि. वि.

प्रश्न (90) मित्र कृष्ण मिथुन थापा मगर

विवाह के नरपण्यकालगारि मसगली इजिब

१०॥ प्रश्न १२) डिपेंडेंसी श्री गंगाप्रसाद चौलाहाई

93) 50 बीए प्रहरी चोक्ती शुनरी यमपुरा पादय

११/१२/२०२० (१४) डिसेंबर, श्री गोकुलचंद्र प्रसाद चौलागाई

(१६) डिमेट्रो ब्राउन शत्रु अलम मगर

पद विभक्ति अन्तर्गत १० अंश

(96) डिमंडी करी दुपणेवसुदर सुलाल मंगर

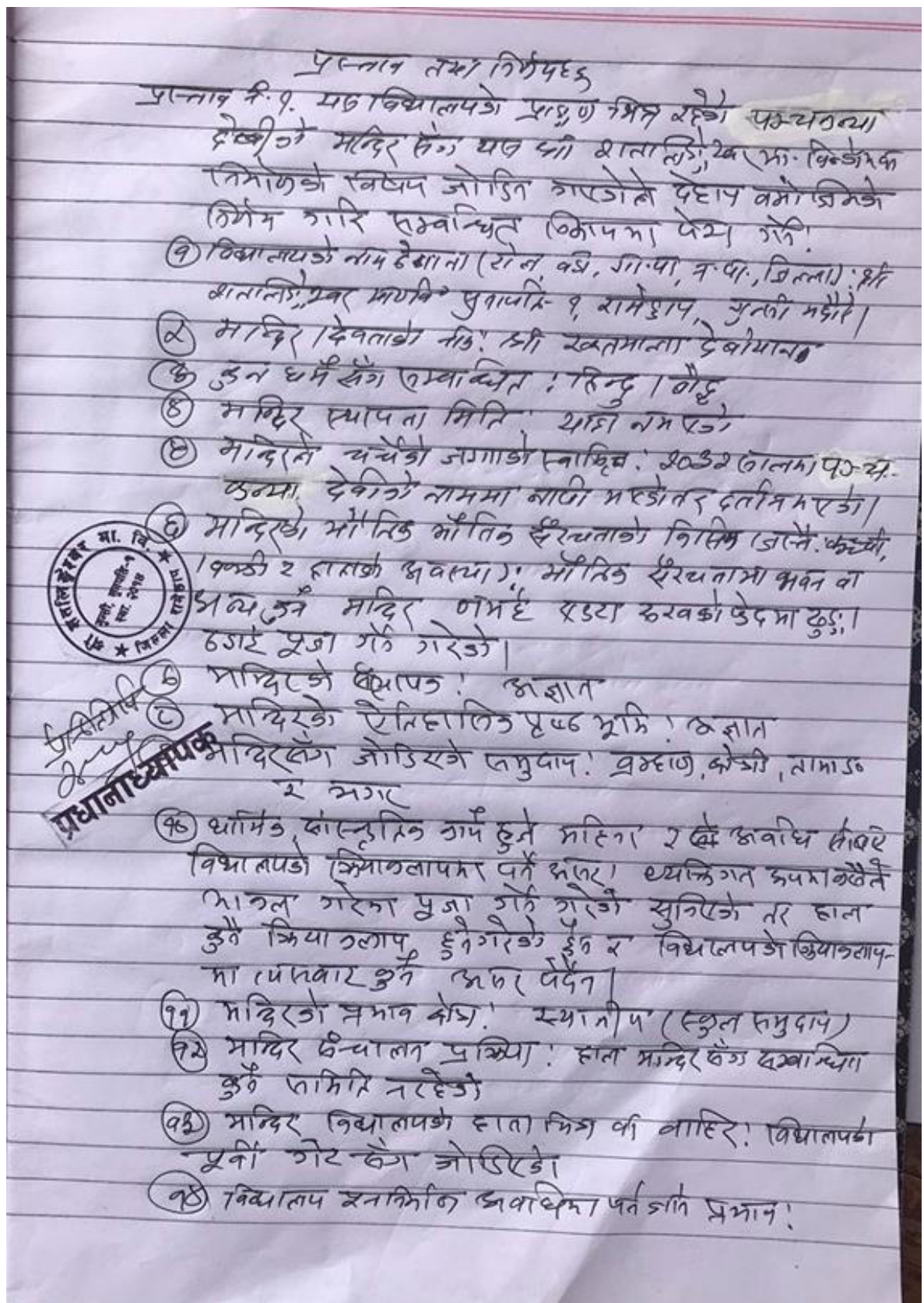
जैम्बल (१८) वडा. नं. १. ग. सि. ० गुमानखुवा चोलागढि

(13) ५०६० पुहरीपांडी भुवने ओ विजय कुमाहिंद -

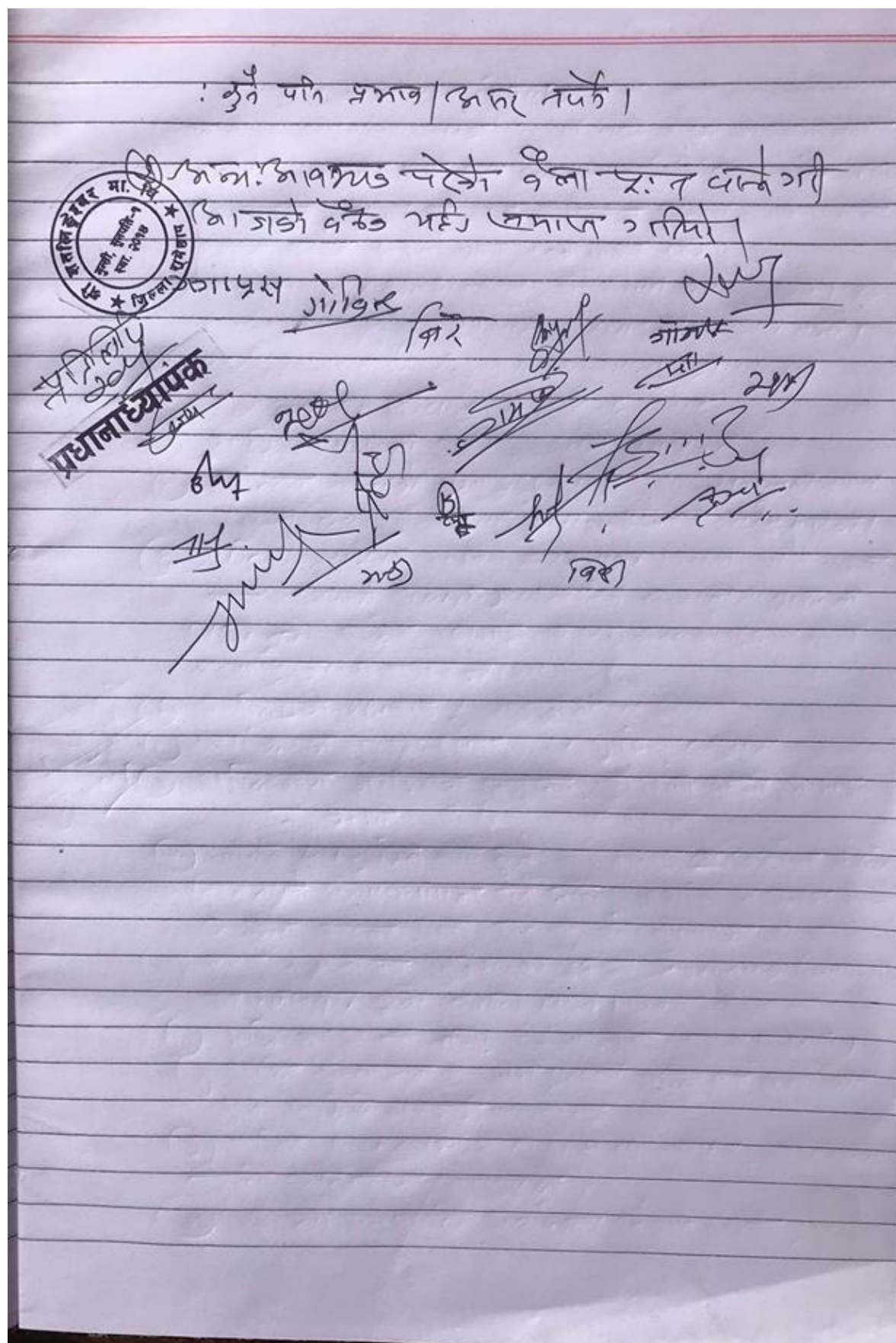
② डिमोनेस्ट्रेशन नृत्य साधना-पूलागा

4. கி. டி. சி. குருசாமிநாதர் யோலாநாடி (K)











## श्री शतलिङ्गेश्वर माध्यमिक विद्यालय



फोन नं : ९७७९००५६६४, ९७७९००६८८८

पत्र संख्या: २०७५-०७७

मिति: २०७५-१२-१०

च.न. १२४

विषय: निर्णय पेश गरिएको सम्बन्धमा ।

प्रस्तुत विषयमा यस विद्यालयको प्राङ्गण भित्र रहेको रक्षामन्त्री मन्दिरको सम्बन्धमा देहाय बमोजिम निर्णय भएकोले निर्णय प्रतिरूपि यसै पत्रसाथ सलग्न गरी पेश गरेको व्यहोरा अनुरोध छ ।

- १) विद्यालयको नाम: श्री शतलिङ्गेश्वर माध्यमिक विद्यालय गुन्सी, सुनापति-१, रामेछाप ।
- २) मन्दिर देवताको नाम: श्री गणेशदेवजी देवीमान देवीमान
- ३) कुन धर्मसंग सम्बन्धित: हिन्दु/बौद्ध
- ४) मन्दिर स्थापना मिति: थाहा नभएको
- ५) मन्दिरले चर्चिएको जग्गाको स्वामित्व: २०३२ सालमा रक्तमाला देवीको नाममा नापी भएको तर दता नभएको
- ६) मन्दिरको भौतिक संरचना र हालको अवस्था: भौतिक संरचनामा भवन वा अन्य कुनै मन्दिर नभई एउटा स्तुभको फेदमा बुइया ठुलाइ पूजा गर्ने गरेको ।
- ७) मन्दिरको संस्थापक/अज्ञात
- ८) मन्दिरको ऐतिहासिक पृष्ठभूमि: अज्ञात
- ९) मन्दिरसंग जोडिएको समुदाय: खम्बाण, क्षेत्री, तामाङ र मगर
- १०) धार्मिक/सांस्कृतिक कार्य हुने महिना र अवधि: सोचाट विद्यालयको क्रियाकलापमा पर्ने असार/व्याक्तिगत रुपमा कसैले भाकल गर्ने पूजा गर्ने गरेको सुनेको तर हाल कुनै क्रियाकलाप हुने गरेको छैन र विद्यालयको क्रियाकलापमा त्यसबाट कुनै असर पर्दैन ।
- ११) मन्दिरको प्रभाव क्षेत्र र पुरातात्विक महत्त्व: स्थानीय (स्कूल समुदाय)
- १२) मन्दिर संचालन प्रक्रिया: हाल मन्दिरसंग सम्बन्धित कुनै समिति नरहेको ।
- १३) मन्दिर विद्यालय हाता भित्र हो वा बाहिर: विद्यालयको पूर्वी गेटसंग जोडिएको ।
- १४) विद्यालय पुर्ननिर्माण अवधिमा पर्ने जाने प्रभाव: कुनै पनि प्रभाव नपर्ने ।

*[Signature]*  
एकमाथि ०६६/१५५०  
प्रधानाध्यापक

**Meeting minute for no obstruction in building construction due to the presence of the temple, Devithumka SS, Kavre**

आज मिति २०७७ साल जेठ १३ गतेका दिन कञ्चनपुर महोदय  
 धर्म सेवा समिति: मण्डनदेउपुर-५ को अध्यक्ष श्री मलप्रसाद  
 सापकाको अध्यक्षतामा बैठक तहसील तहसिलका प्रस्तावहरू भन्ने  
 छलफल गरि निर्णय गरियो।

**उपस्थिति**

क्र.सं	नाम/पद	हस्ताक्षर
१.	श्री मलप्रसाद सापका (अध्यक्ष)	मलप्रसाद
२.	श्री हरि प्रसाद पौडेल (उपाध्यक्ष)	हरि
३.	श्री हिराकाजी चौधरी (समिति कोषाध्यक्ष)	हिराकाजी
४.	श्री राजबिन्दु नेपाल	राजबिन्दु
५.	श्री प्रहलाद नेपाल	"
६.	श्री राजकृष्ण नेपाल	"
७.	श्री रामप्रसाद शराङ्ग	रामप्रसाद
८.	श्री ज्ञानेश प्रसाद नेपाल	विद्यालय अध्यक्ष
९.	श्री सरस्वती रि	प्र.अ.
१०.	श्री दिनेश पन्थ्या	वि.सं.स. सदस्य
११.	श्री अम्बिका डकुरी	वि.सं.स. सदस्य
१२.	श्री जीत बहादुर तामाङ	वडा अध्यक्ष - ३
१३.	श्री नारायण लम्साल	वडा अध्यक्ष - ६
१४.	श्री दिनेश नेपाल	सिक्क प्रतिनिधि
१५.	श्री सुदर्शन नेपाल	"
१६.	श्री अण्णु डाली	विद्यार्थी प्रतिनिधि
१७.	श्री प्रशान्त गजौरी	"

**प्रस्तावहरू**

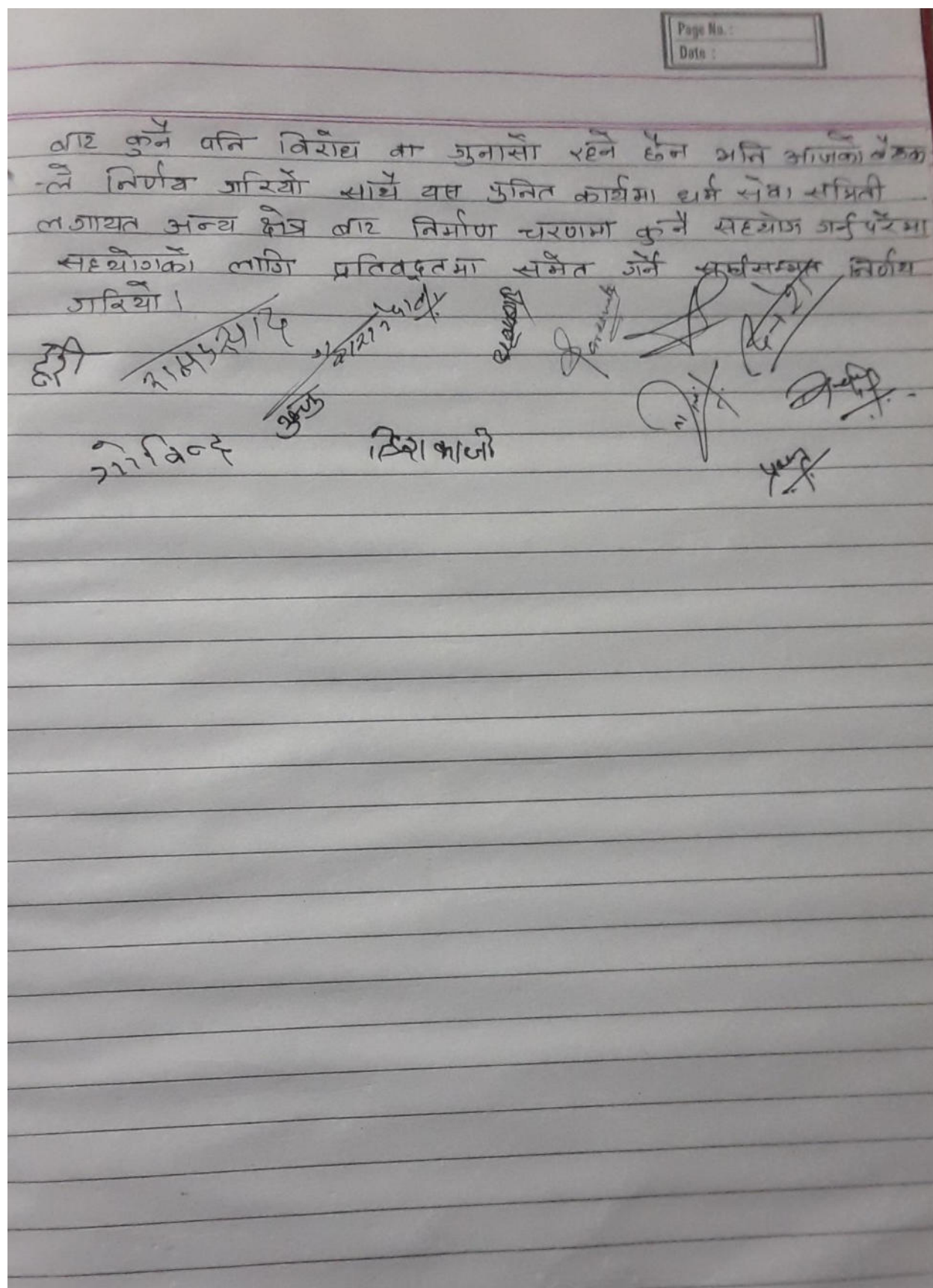
१. भवन निर्माण सम्बन्धमा
२. विविध

**निर्णयहरू**

प्रस्ताव नं १ माथि छलफल गर्दा १७/७/७७ यस श्री डेवीकुम  
 भा.वि. मण्डनदेउपुर-५ को नयाँ निर्माणाधीन भवन आठ को  
 आर्थिक सहयोगमा निर्माण गर्न यस कञ्चनपुर महोदय भित्र एनिस  
 एडेउमा पुग्ने द्रष्ट भवन दर्हाई तथा ३ तले १०० भवन बन्न  
 आवश्यक कागज पत्र तथा गरी कार्य प्रारम्भ भइसकेकोले उक्त  
 भवन निर्माण गर्न यस कञ्चनपुर धर्म सेवा समितिको तर्फ

श्री *[Signature]*

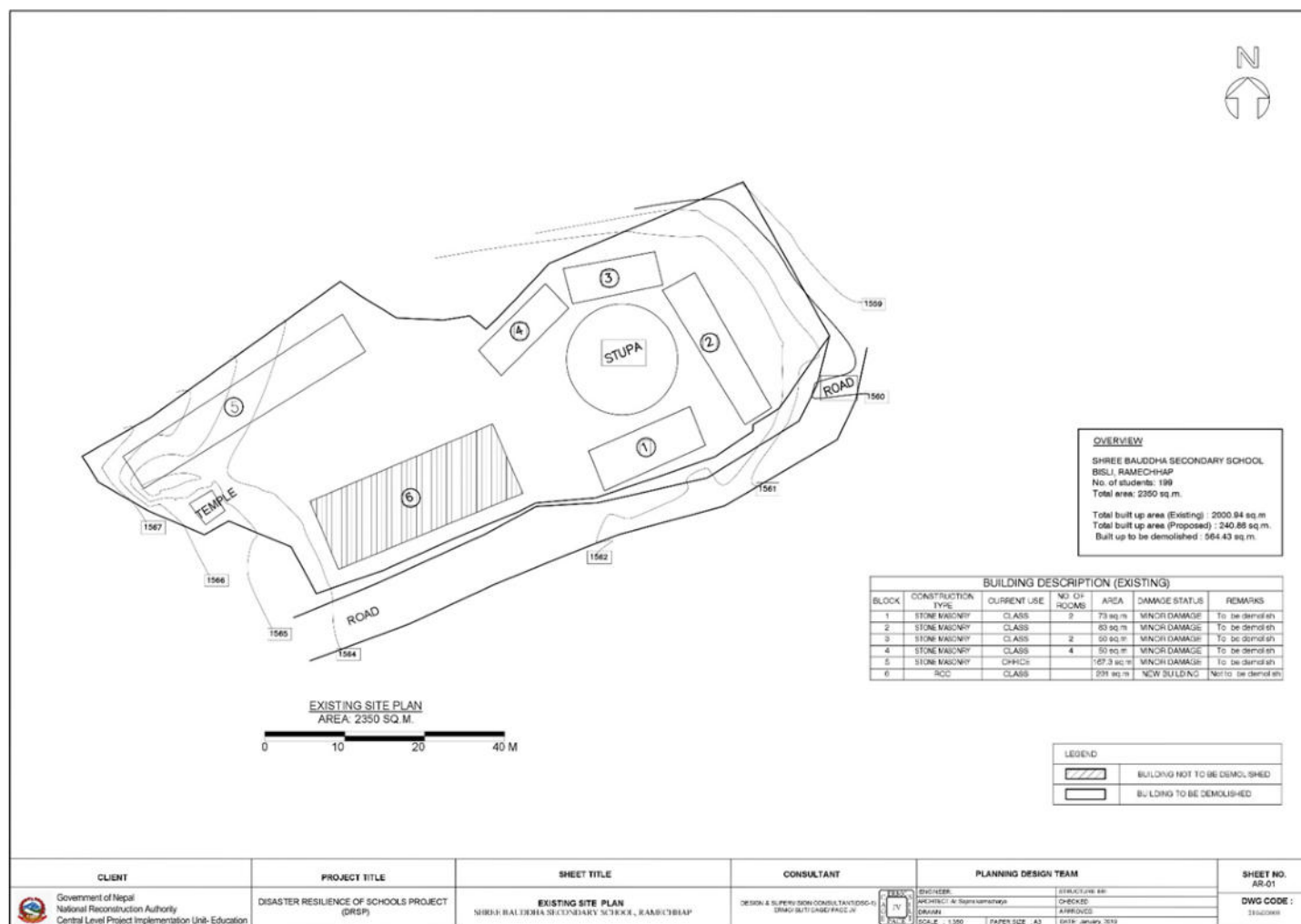




- ⇒ Shree Dedi Thumka Secondary School, Mandandoupur Municipality-9, Mahadevsthan, Kavre.
- ⇒ Kashireshwar Mahadev Temple
- ⇒ Hindu
- ⇒ 1593 - 02 - . . .
- ⇒ 9 Ropani, 10 Aana
- ⇒ Pagoda style ; in good condition
- ⇒ Made in Malla Dynasty ; Registered in "Puratana Bibhag", Gauri and run by society and local government at present.
- ⇒ Registered in 'Puratana Bibhag'  
There is 'Saraswati Kunda' at front of the temple and 'Gauri Kunda' at the back side of it.
- ⇒ It's attachment is with 'Hindu society'
- ⇒ There are many cultural and religious functions occur in the premises of the temple. They are 'Bala Chaturdashi', 'Shivraatri', 'Chandi purnima' and 'regular Annual puja' of the temple and they definitely affect the school's activities completely or partially.

- ⇒ It's importance is not only limited to the school but also for the local and regional people and the people from the different parts of the country.
- ⇒ It is basically run by 'Mahadevsthan Dharma Sewa Samiti' Local pujari's, Guthi, and local people.
- ⇒ The temple is accessible through public vehicle and private as well. It is outside the school boundary.
- ⇒ During the construction, there will not be any kind of bad impacts for the temple.

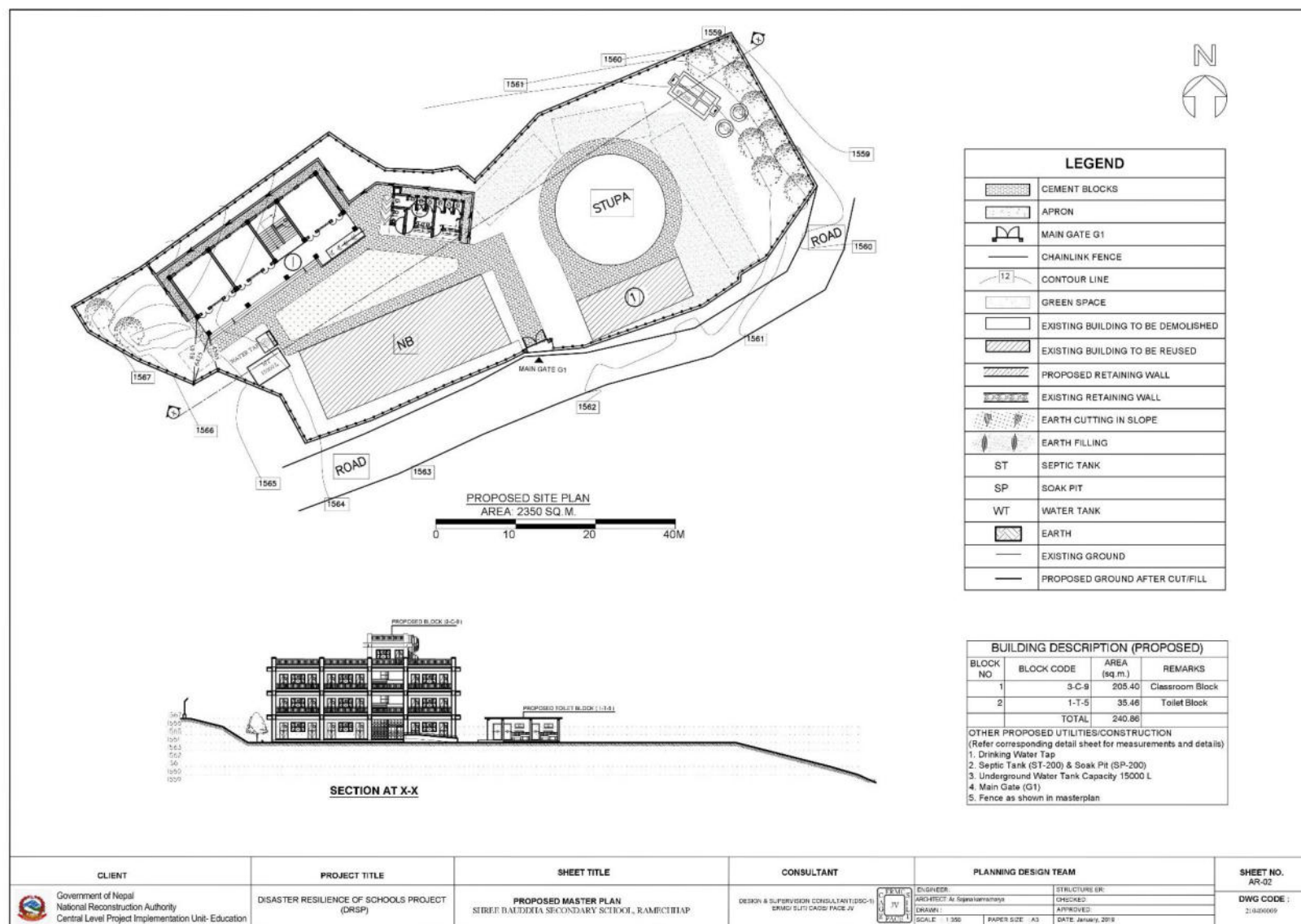
## Annex 2: Existing site plans and Master Plans of the schools with temples or stupa with the boundary



Existing site plan of Shree Bouddha SS, Ramechhap

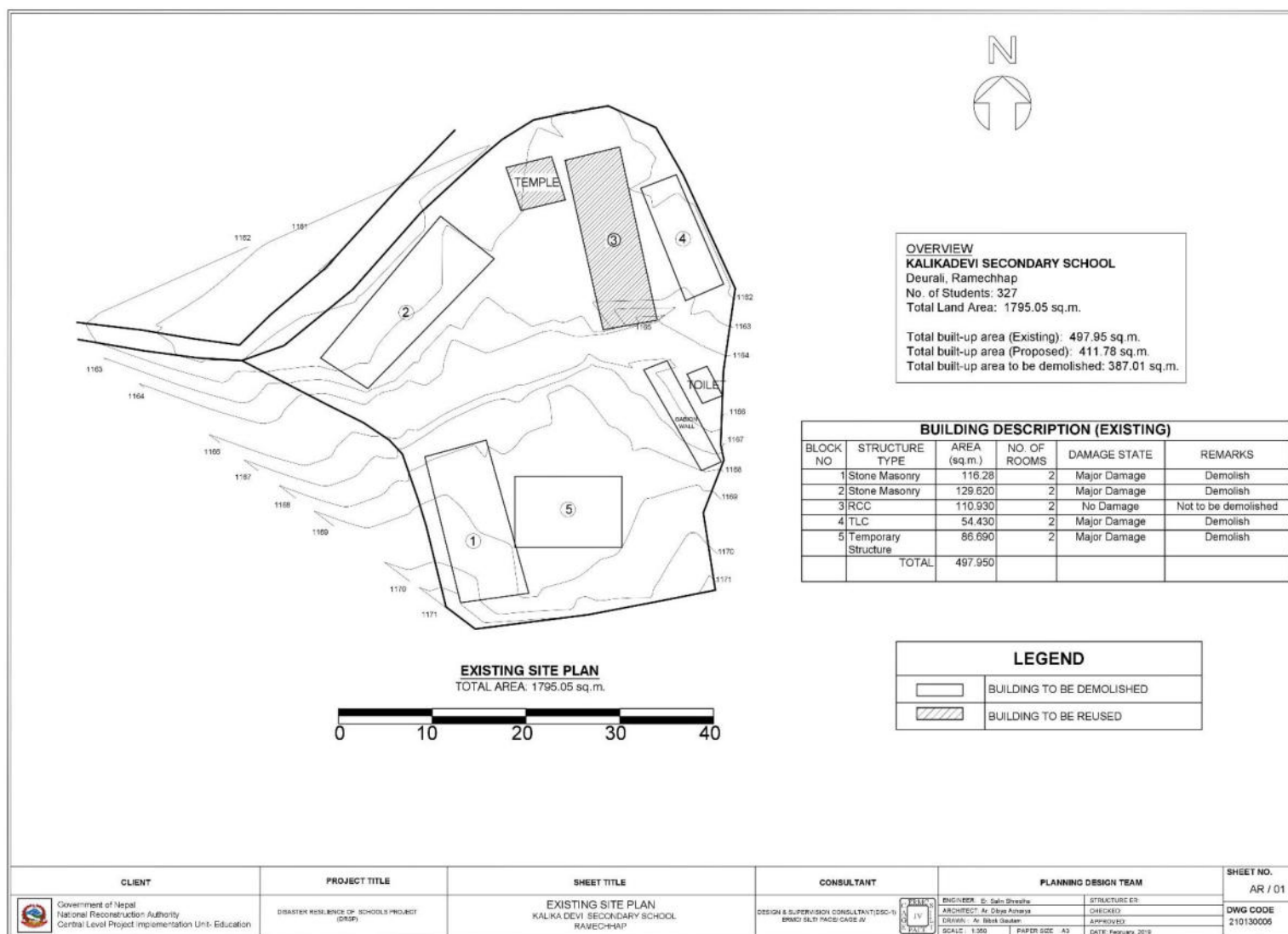


# Proposed Master plan of Shree Bouddha SS, Ramechhap

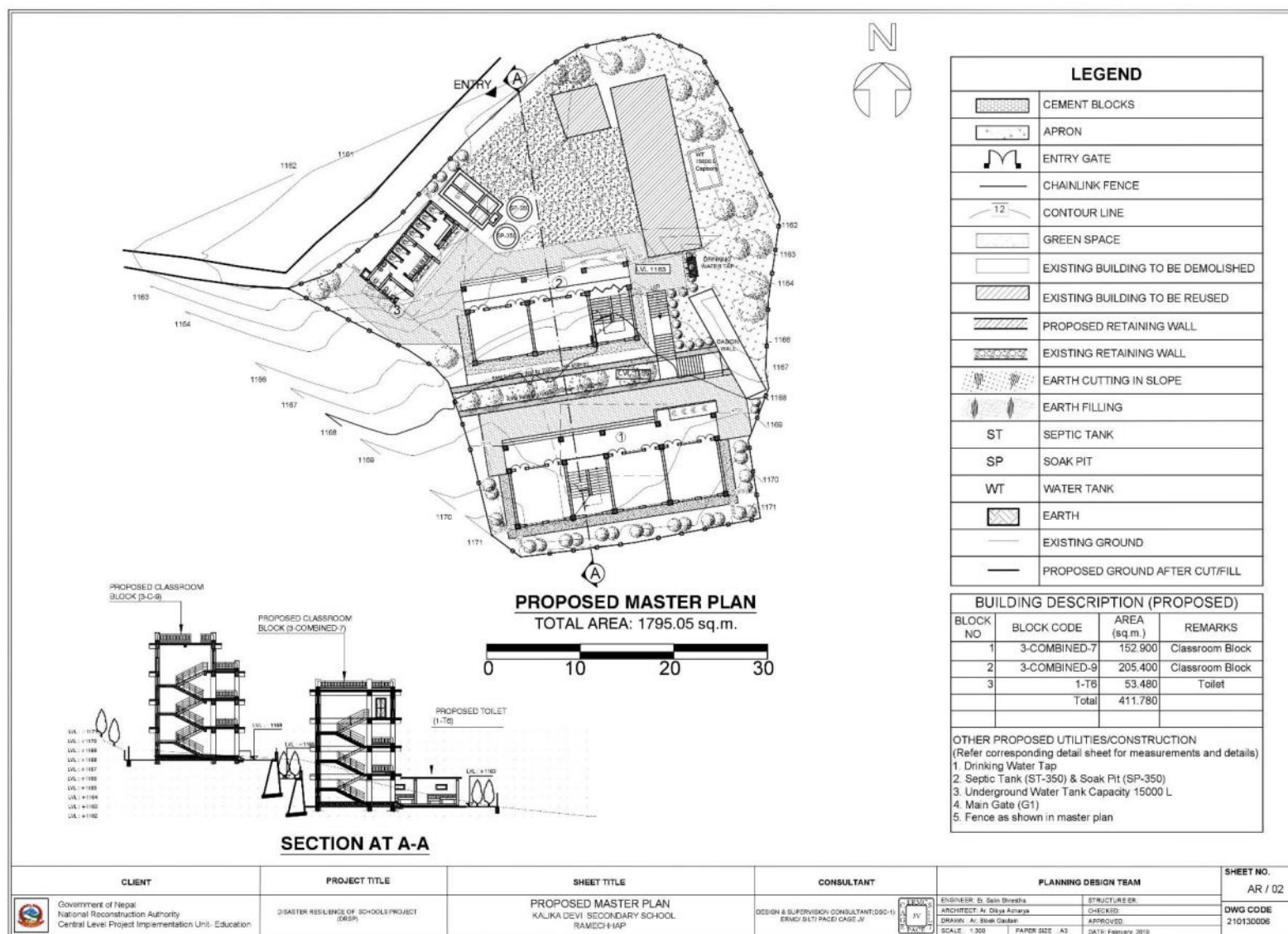




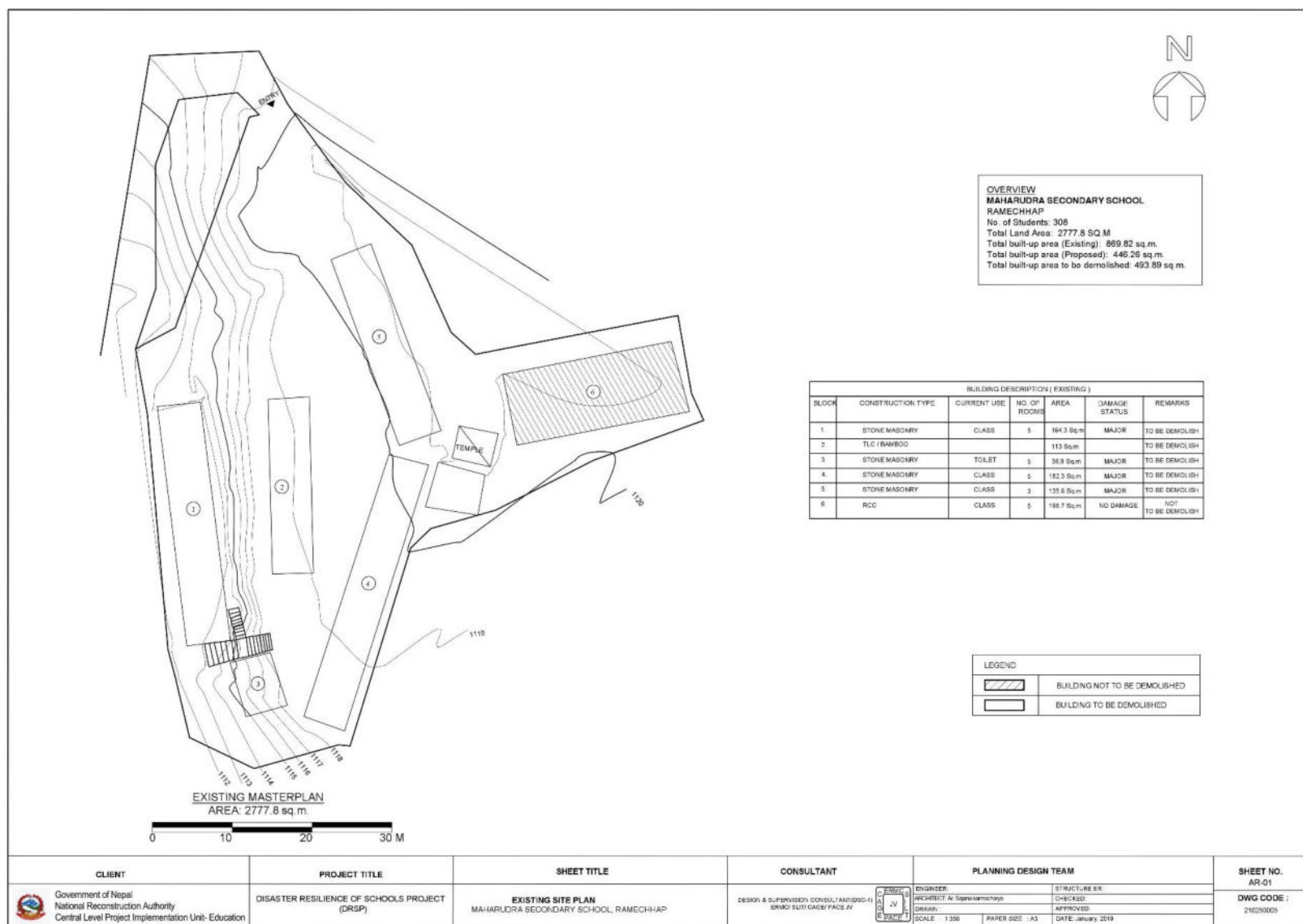
Existing site plan of Kalikadevi SS, Ramechhap



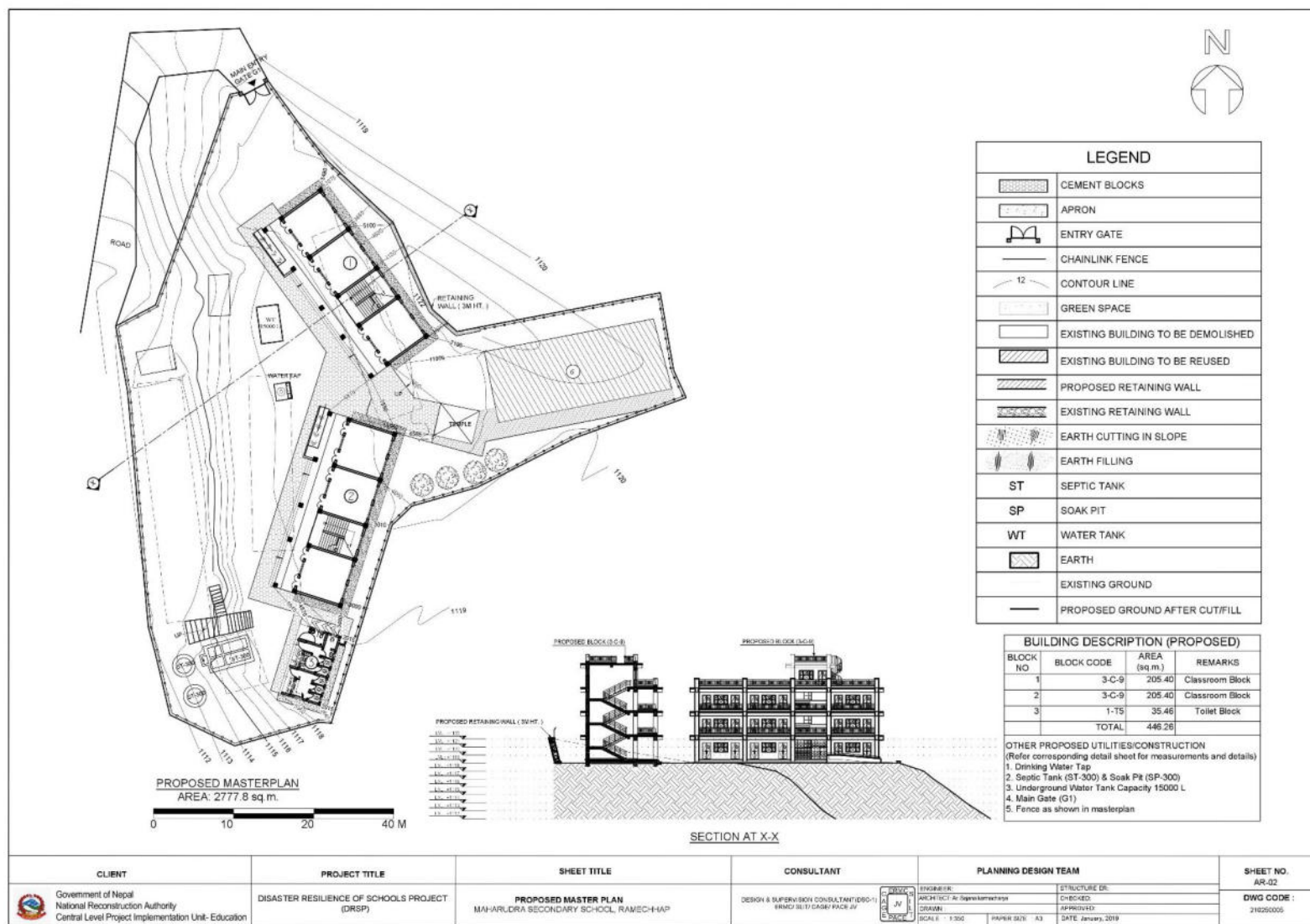
# Proposed Master plan of Kalikadevi SS, Ramechhap



# Existing Site Plan of Maharudra SS, Ramechhap

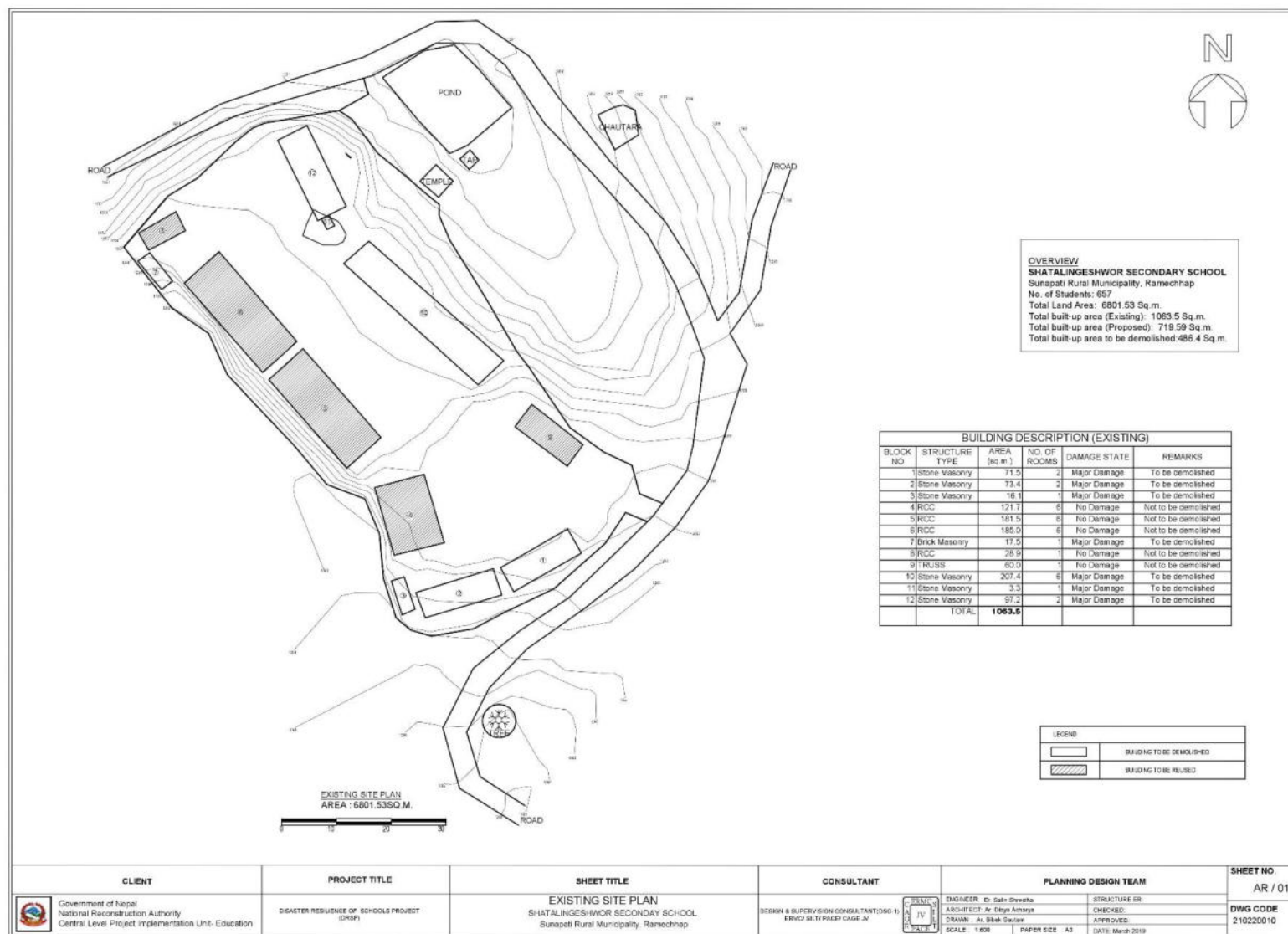


# Proposed Master Plan of Maharudra SS, Ramechhap

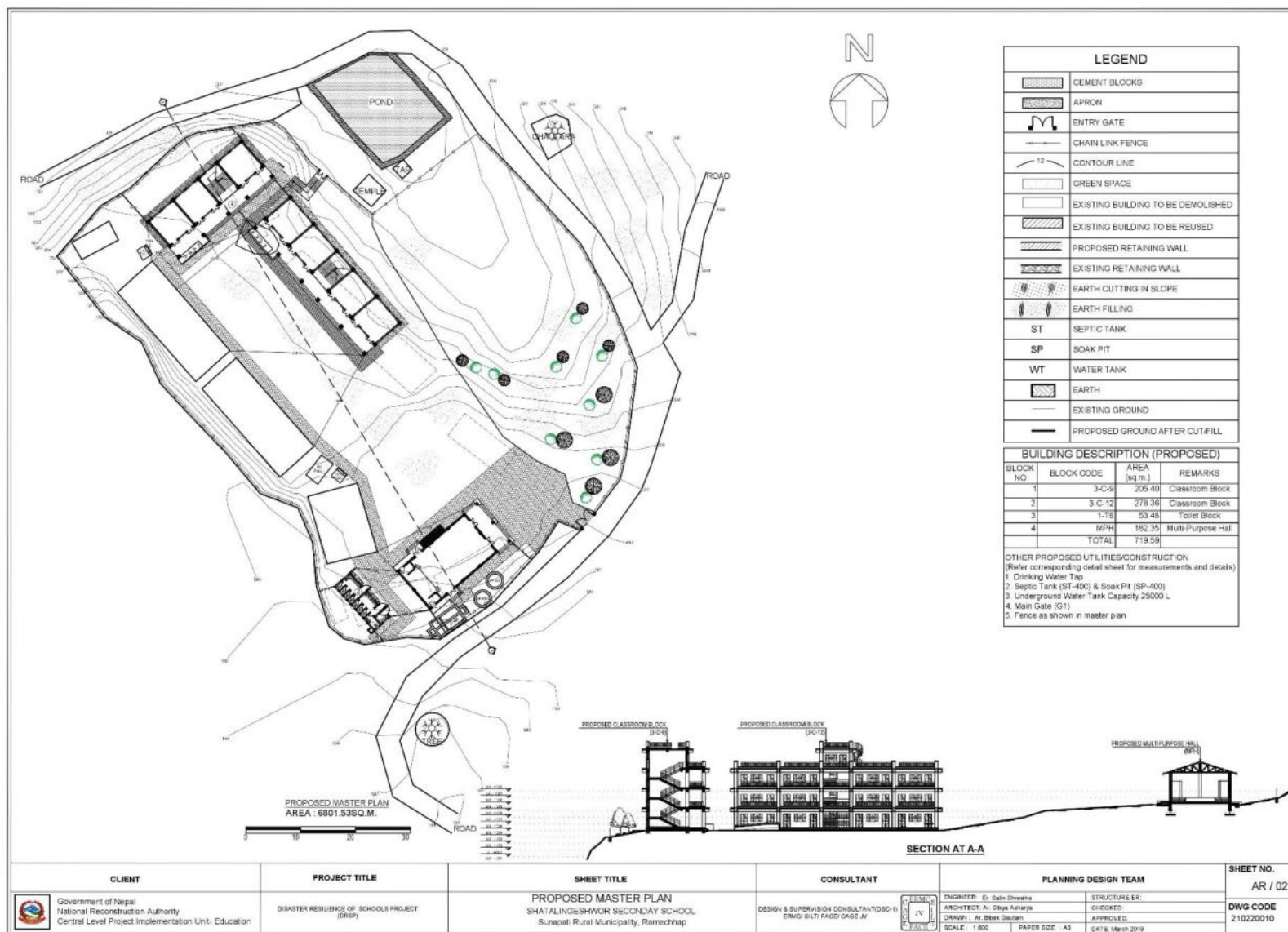




# Existing Site Plan of Satalingeshowr SS, Ramechhap



# Proposed Master Plan of Satelingshowr SS, Ramechhap



### Existing Site Plan of Devithumka SS, Kavre

