



Resettlement Plan

Project Number: 52026-001
December 2022

People's Republic of China: Anhui Huangshan Xin'an River Ecological Protection and Green Development Project

Prepared by the Huangshan Municipal Government for the Asian Development Bank. This is an updated version of the draft originally posted in July 2019 available on <https://www.adb.org/projects/documents/prc-52026-001-rp>.

This resettlement plan is a document of the borrower. The views expressed herein do not necessarily represent those of ADB's Board of Directors, Management, or staff, and may be preliminary in nature. Your attention is directed to the "terms of use" section on ADB's website.

In preparing any country program or strategy, financing any project, or by making any designation of or reference to a particular territory or geographic area in this document, the Asian Development Bank does not intend to make any judgments as to the legal or other status of any territory or area.

Updated Resettlement Plan

September 2022

For

Works-HS-3 Xinhua Xiang Ecological Forestry Park

Works-SX-2 She County Urban Storm and Sewer Line Improvement Project
(2)

Works-SX-7 Ecotourism of Xin'an River (She County Section)

Works-SX-9 Xitou Yancun Water Supply Project

Works-XN-3 Xiuning County Ecological Village Construction Project-
Shangshan (1)

Works-XN-4 Xiuning County Ecological Village Construction Project-
Shangshan (2)

Works-XN-5 Xiuning County Ecological Village Construction Project-
Shangshan (3)

Works-XN-6 Xiuning County Ecological Village Construction Project - Xikou

Works-XN-7 Xiuning County Ecological Village Construction Project -
Wucheng

of

Anhui Huangshan Xin'an River Ecological Protection
and Green Development Project

Prepared by the Huangshan Municipal Government (HMG) for ADB

Endorsement Letter

1. The People's Government of Huangshan City had, through the Ministry of Finance of the People's Republic of China, applied a loan from the Asian Development Bank to finance Anhui Huangshan Xin'an River Ecological Protection and Green Development Project (the "project") and thus the implementation of this project shall meet the social safeguard policies of Asian Development Bank. This Updated Resettlement Plan for subprojects Package Works-HS-3 Xinhua Xiang Ecological Forestry Park; Works-SX-2 She County Urban Storm and Sewer Line Improvement Project (2); Works-SX-7 Ecotourism of Xin'an River (She County Section); Works-SX-9 Xitou Yancun Water Supply Project; Works-XN-3 Xiuning County Ecological Village Construction Project-Shangshan (1); Works-XN-4 Xiuning County Ecological Village Construction Project-Shangshan (2); Works-XN-5 Xiuning County Ecological Village Construction Project-Shangshan (3); Works-XN-6 Xiuning County Ecological Village Construction Project – Xikou; and Works-XN-7 Xiuning County Ecological Village Construction Project – Wucheng represents a critical requirement of the Asian Development Bank and a basis for land acquisition and resettlement under the subproject Works-HS-3, Works-SX-7, Works-SX-9, Works-XN-3, Works-XN-4, Works-XN-5, Works-SX-2, Works-XN-6, Works-XN-7. This updated Resettlement Plan is prepared subject to the laws and regulations of the local government and the People's Republic of China; and ADB safeguard policy requirements on involuntary resettlement, and based on preliminary design documents and DMS results. In addition, for successful and smooth implementation of the resettlement work, this updated Resettlement Plan stipulates also specific measures for resettlement and the arrangements for implementation and monitoring.
2. The People's Government of Huangshan City hereby approves and acknowledges the contents of this updated Resettlement Plan and commits to include the budget funds outlined in this updated Resettlement Plan into the general budget of subproject Works-HS-3, Works-SX-2, Works-SX-7, Works-SX-9, Works-XN-3, Works-XN-4, Works-XN-5, Works-XN-6, Works-XN-7 and allocate such funds in full amount as scheduled. The People's Government of Huangshan City has discussed with related agencies and authorities and got their consensus on this updated RP. As the implementing agency of the subproject Works-HS-3, Works-SX-2, Works-SX-7, Works-SX-9, Works-XN-3, Works-XN-4, Works-XN-5, Works-XN-6, Works-XN-7, Sub-PMOs of She County, Xiuning County, and Xinhua Township in Huangshan District of subproject hereby endorse this commitment Letter for corresponding coordination of resettlement work.

Authority	Signature	Date
Huangshan PMO		12.9
Sub-PMO of She County		
Sub-PMO of Xiuning County		
Xinhua Township of Huangshan District		

Endorsement Letter

1. The People's Government of Huangshan City had, through the Ministry of Finance of the People's Republic of China, applied a loan from the Asian Development Bank to finance Anhui Huangshan Xin'an River Ecological Protection and Green Development Project (the "project") and thus the implementation of this project shall meet the social safeguard policies of Asian Development Bank. This Updated Resettlement Plan for subprojects Package Works-HS-3 Xinhua Xiang Ecological Forestry Park; Works-SX-2 She County Urban Storm and Sewer Line Improvement Project (2); Works-SX-7 Ecotourism of Xin'an River (She County Section); Works-SX-9 Xitou Yancun Water Supply Project; Works-XN-3 Xiuning County Ecological Village Construction Project-Shangshan (1); Works-XN-4 Xiuning County Ecological Village Construction Project-Shangshan (2); Works-XN-5 Xiuning County Ecological Village Construction Project-Shangshan (3); Works-XN-6 Xiuning County Ecological Village Construction Project – Xikou; and Works-XN-7 Xiuning County Ecological Village Construction Project – Wucheng represents a critical requirement of the Asian Development Bank and a basis for land acquisition and resettlement under the subproject Works-HS-3, Works-SX-7, Works-SX-9, Works-XN-3, Works-XN-4, Works-XN-5, Works-SX-2, Works-XN-6, Works-XN-7. This updated Resettlement Plan is prepared subject to the laws and regulations of the local government and the People's Republic of China; and ADB safeguard policy requirements on involuntary resettlement, and based on preliminary design documents and DMS results. In addition, for successful and smooth implementation of the resettlement work, this updated Resettlement Plan stipulates also specific measures for resettlement and the arrangements for implementation and monitoring.
2. The People's Government of Huangshan City hereby approves and acknowledges the contents of this updated Resettlement Plan and commits to include the budget funds outlined in this updated Resettlement Plan into the general budget of subproject Works-HS-3, Works-SX-2, Works-SX-7, Works-SX-9, Works-XN-3, Works-XN-4, Works-XN-5, Works-XN-6, Works-XN-7 and allocate such funds in full amount as scheduled. The People's Government of Huangshan City has discussed with related agencies and authorities and got their consensus on this updated RP. As the implementing agency of the subproject Works-HS-3, Works-SX-2, Works-SX-7, Works-SX-9, Works-XN-3, Works-XN-4, Works-XN-5, Works-XN-6, Works-XN-7, Sub-PMOs of She County, Xiuning, and Huangshan of subproject hereby endorse this commitment Letter for corresponding coordination of resettlement work.

Authority	Signature	Date
Sub-PMO of She County		2022.11.15
Sub-PMO of Xiuning County		
Sub-PMO of Huangshan District		

Endorsement Letter

1. The People's Government of Huangshan City had, through the Ministry of Finance of the People's Republic of China, applied a loan from the Asian Development Bank to finance Anhui Huangshan Xin'an River Ecological Protection and Green Development Project (the "project") and thus the implementation of this project shall meet the social safeguard policies of Asian Development Bank. This Updated Resettlement Plan for subprojects Package Works-HS-3 Xinhua Xiang Ecological Forestry Park; Works-SX-2 She County Urban Storm and Sewer Line Improvement Project (2); Works-SX-7 Ecotourism of Xin'an River (She County Section); Works-SX-9 Xitou Yancun Water Supply Project; Works-XN-3 Xiuning County Ecological Village Construction Project-Shangshan (1); Works-XN-4 Xiuning County Ecological Village Construction Project-Shangshan (2); Works-XN-5 Xiuning County Ecological Village Construction Project-Shangshan (3); Works-XN-6 Xiuning County Ecological Village Construction Project - Xikou; and Works-XN-7 Xiuning County Ecological Village Construction Project - Wucheng represents a critical requirement of the Asian Development Bank and a basis for land acquisition and resettlement under the subproject Works-HS-3, Works-SX-7, Works-SX-9, Works-XN-3, Works-XN-4, Works-XN-5, Works-SX-2, Works-XN-6, Works-XN-7. This updated Resettlement Plan is prepared subject to the laws and regulations of the local government and the People's Republic of China; and ADB safeguard policy requirements on involuntary resettlement, and based on preliminary design documents and DMS results. In addition, for successful and smooth implementation of the resettlement work, this updated Resettlement Plan stipulates also specific measures for resettlement and the arrangements for implementation and monitoring.
2. The People's Government of Huangshan City hereby approves and acknowledges the contents of this updated Resettlement Plan and commits to include the budget funds outlined in this updated Resettlement Plan into the general budget of subproject Works-HS-3, Works-SX-2, Works-SX-7, Works-SX-9, Works-XN-3, Works-XN-4, Works-XN-5, Works-XN-6, Works-XN-7 and allocate such funds in full amount as scheduled. The People's Government of Huangshan City has discussed with related agencies and authorities and got their consensus on this updated RP. As the implementing agency of the subproject Works-HS-3, Works-SX-2, Works-SX-7, Works-SX-9, Works-XN-3, Works-XN-4, Works-XN-5, Works-XN-6, Works-XN-7, Sub-PMOs of She County, Xiuning, and Huangshan of subproject hereby endorse this commitment Letter for corresponding coordination of resettlement work.

Authority	Signature	Date
Sub-PMO of She County		
Sub-PMO of Xiuning County	Xu Jinwei	Nov 15, 2022
Sub-PMO of Huangshan District		

Endorsement Letter

1. The People's Government of Huangshan City had, through the Ministry of Finance of the People's Republic of China, applied a loan from the Asian Development Bank to finance Anhui Huangshan Xin'an River Ecological Protection and Green Development Project (the "project") and thus the implementation of this project shall meet the social safeguard policies of Asian Development Bank. This Updated Resettlement Plan for subprojects Package Works-HS-3 Xinhua Xiang Ecological Forestry Park; Works-SX-2 She County Urban Storm and Sewer Line Improvement Project (2); Works-SX-7 Ecotourism of Xin'an River (She County Section); Works-SX-9 Xitou Yancun Water Supply Project; Works-XN-3 Xiuning County Ecological Village Construction Project-Shangshan (1); Works-XN-4 Xiuning County Ecological Village Construction Project-Shangshan (2); Works-XN-5 Xiuning County Ecological Village Construction Project-Shangshan (3); Works-XN-6 Xiuning County Ecological Village Construction Project – Xikou; and Works-XN-7 Xiuning County Ecological Village Construction Project – Wucheng represents a critical requirement of the Asian Development Bank and a basis for land acquisition and resettlement under the subproject Works-HS-3, Works-SX-7, Works-SX-9, Works-XN-3, Works-XN-4, Works-XN-5, Works-SX-2, Works-XN-6, Works-XN-7. This updated Resettlement Plan is prepared subject to the laws and regulations of the local government and the People's Republic of China; and ADB safeguard policy requirements on involuntary resettlement, and based on preliminary design documents and DMS results. In addition, for successful and smooth implementation of the resettlement work, this updated Resettlement Plan stipulates also specific measures for resettlement and the arrangements for implementation and monitoring.
2. The People's Government of Huangshan City hereby approves and acknowledges the contents of this updated Resettlement Plan and commits to include the budget funds outlined in this updated Resettlement Plan into the general budget of subproject Works-HS-3, Works-SX-2, Works-SX-7, Works-SX-9, Works-XN-3, Works-XN-4, Works-XN-5, Works-XN-6, Works-XN-7 and allocate such funds in full amount as scheduled. The People's Government of Huangshan City has discussed with related agencies and authorities and got their consensus on this updated RP. As the implementing agency of the subproject Works-HS-3, Works-SX-2, Works-SX-7, Works-SX-9, Works-XN-3, Works-XN-4, Works-XN-5, Works-XN-6, Works-XN-7, Sub-PMOs of She County, Xiuning County, and Xinhua Township in Huangshan District of subproject hereby endorse this commitment Letter for corresponding coordination of resettlement work.

Authority	Signature	Date
Sub-PMO of She County		
Sub-PMO of Xiuning County		
Xinhua Township of Huangshan District		2022-11-28

CURRENCY EQUIVALENTS

(as of 1 Sep 2022)

Currency unit	–	yuan (CNY)
\$1.00	=	CNY 6.8821

ABBREVIATIONS

ADB	-	Asian Development Bank
AH	-	Affected Household
APs	-	Affected Persons
CNY	-	Chinese Yuan
FSR	-	Feasibility Study Report
LA	-	Land Acquisition
LURPI	-	Land Use for Rural Public Infrastructure
PMO	-	Project Management Office
PRC	-	People's Republic of China
RP	-	Resettlement Plan
URP	-	Updated Resettlement Plan

MEASURES

1 hectare	=	10,000 m ²
1 mu	=	666.67 m ²

Contents

1	INTRODUCTION	1
2	UPDATED LAR IMPACTS OF THE PROJECT	3
3	IMPLEMENTATION AND MANAGEMENT INSTITUTION	7
4	LEGAL FRAMEWORK AND POLICIES	8
4.1	LAWS, REGULATIONS AND POLICIES.....	8
4.2	ADB'S POLICIES ON INVOLUNTARY RESETTLEMENT	8
4.3	MAIN DIFFERENCES BETWEEN THE ADB'S POLICIES AND PRC LAWS AS WELL AS MEASURES TAKEN IN RP	8
4.4	RESETTLEMENT POLICIES FOR THE PROJECT	9
4.5	CUT-OFF DATE OF ELIGIBILITY FOR COMPENSATION.....	9
4.6	PERMANENT OCCUPATION OF LURPI	9
4.7	GROUND ATTACHMENTS.....	9
4.8	ENTITLEMENT MATRIX.....	10
5	RESETTLEMENT AND INCOME RESTORATION	11
5.1	LIVELIHOOD RESTORATION PROGRAMS.....	11
5.1.1	<i>Cash Compensation</i>	<i>11</i>
5.1.2	<i>Employment</i>	<i>11</i>
1)	<i>Social jobs.....</i>	<i>12</i>
2)	<i>Public welfare jobs</i>	<i>12</i>
3)	<i>Employment under the Project.....</i>	<i>12</i>
5.2	WOMEN'S DEVELOPMENT MEASURES	13
5.2.1	<i>Equal Rights of Women in Resettlement</i>	<i>13</i>
5.2.2	<i>Priority of Women in Livelihood Restoration.....</i>	<i>13</i>
5.3	RESTORATION MEASURES FOR TLO	14
6	ORGANIZATIONAL STRUCTURES AND STAFFING.....	15
6.1	RESETTLEMENT IMPLEMENTATION AND MANAGEMENT AGENCIES	15
6.1.1	Organizational Setup.....	15
6.1.2	Organizational Responsibilities.....	15
6.1.3	Organizational Chart.....	17
6.2	STAFFING AND EQUIPMENT	17
6.2.1	<i>Staffing</i>	<i>17</i>
6.2.2	<i>Equipment</i>	<i>18</i>
6.2.3	<i>Organizational Training Program</i>	<i>18</i>

7	PUBLIC PARTICIPATION, CONSULTATION AND GRIEVANCE REDRESS MECHANISM	20
7.1	PUBLIC PARTICIPATION AND CONSULTATION	20
7.2	GRIEVANCES REDRESS MECHANISM	23
8	BUDGET AND SOURCE OF FUNDS	25
8.1	BUDGET.....	25
8.2	ANNUAL PLAN OF RESETTLEMENT FUNDS	25
8.3	MANAGEMENT AND APPROPRIATION OF RESETTLEMENT FUNDS	25
9	RESETTLEMENT IMPLEMENTATION SCHEDULE.....	26
9.1	PRINCIPLES OF RESETTLEMENT ACTION	26
9.2	TIMELINE FOR THE RESETTLEMENT WORK	26
10	MONITORING AND EVALUATION	28
10.1	INTERNAL MONITORING	28
10.2	EXTERNAL MONITORING.....	28
	10.2.1 Scope and Methods	28
	10.2.2 Reporting.....	29
10.3	POST-EVALUATION	29
	APPENDIX 1 WORKS-HS-3 XINHUA XIANG ECOLOGICAL FORESTRY PARK	30
	APPENDIX 2 WORKS-SX-7 ECOTOURISM OF XIN'AN RIVER (SHE COUNTY SECTION)	32
	APPENDIX 3 WORKS-SX-9 XITOU YANCUN WATER SUPPLY PROJECT	33
	APPENDIX 4 WORKS-XN-3, WORKS-XN-4, WORKS-XN-5, XIUNING COUNTY ECOLOGICAL VILLAGE CONSTRUCTION PROJECT-SHANGSHAN	34
	APPENDIX 5 WORKS-XN-6 XIUNING COUNTY ECOLOGICAL VILLAGE CONSTRUCTION PROJECT - XIKOU	35
	APPENDIX 6 WORKS-XN-7 XIUNING COUNTY ECOLOGICAL VILLAGE CONSTRUCTION PROJECT - WUCHENG.....	37

Statement of the Resettlement Plan Update

1. This updated resettlement plan (RP) is in line with the original draft resettlement plan for the Anhui Huangshan Xin'an River Ecological Protection and Green Development Project approved in July 2019 (see: <https://www.adb.org/projects/documents/prc-52026-001-rp>).
2. The resettlement plan (RP) was updated on basis of preliminary design and detailed measurement survey (DMS) for the following packages: Works-HS-3 Xinhua Xiang Ecological Forestry Park; Works-SX-2 She County Urban Storm and Sewer Line Improvement Project (2); Works-SX-7 Ecotourism of Xin'an River (She County Section); Works-SX-9 Xitou Yancun Water Supply Project; Works-XN-3 Xiuning County Ecological Village Construction Project-Shangshan (1); Works-XN-4 Xiuning County Ecological Village Construction Project-Shangshan (2); Works-XN-5 Xiuning County Ecological Village Construction Project-Shangshan (3); Works-XN-6 Xiuning County Ecological Village Construction Project – Xikou; and Works-XN-7 Xiuning County Ecological Village Construction Project – Wucheng.
3. The main updates in the updated RP compared to the original RP are summarized as follows:

LAR impact updates

4. LAR impacts under the packages Works-HS-3, Works-SX-2, Works-SX-7, Works-SX-9, Works-XN-3, Works-XN-4, Works-XN-5, Works-XN-6, and Works-XN-7 mainly involve the permanent occupation of rural public infrastructure land will be compensated for (LURPI, land use for rural public infrastructure provided voluntarily by villagers) and temporary land occupation. In total, 44.38 mu of land will be occupied permanently, including 3.43 mu of state-owned land, no household involved, and 40.95 mu of LURPI, affecting 49 households with 186 persons, including 90 females. 44.06 mu of land will be occupied temporarily, including 19.94 mu of state-owned unused land, and 24.12 mu of collective land, affecting 47 households with 162 persons. All APs are Han people, and no ethnic minority or vulnerable group is affected.

Compensation rates updates

5. There is a bit growth on LA compensation rates and young crops compensation between original RP and URP of packages Works-HS-3, Works-SX-2, Works-SX-7, Works-SX-9, Works-XN-3, Works-XN-4, Works-XN-5, Works-XN-6, and Works-XN-7. See table 1 for the details.

Table 1 LA compensation rates in original RP and URP

Category	Location	Town	Unit	Former compensation rate (farmland)	Compensation rate in 2020	Difference
LA	Huangshan District	Xinhua town	yuan/mu	35700	41100	+5400
	Xiuning County	Shangshan Town, Wucheng Town	yuan/mu	36750	43000	+6250
		Xikou Town	yuan/mu	36750	44700	+7950
	She County	Xitou Town, Kengkou Xiang, Shendu Town, Xiaochuan Xiang, Xinxikou Xiang, Jiekou Town, Wuyang Xiang, Changxi Xiang	yuan/mu	36960	43400	+6440
		Huicheng Town	yuan/mu	39900	45000	+5100
		Wangcun Town, Xiongqun Town	yuan/mu	37800	43400	+5600
Young crop	Huangshan		yuan/mu	1280	1500	+220

Budget updates

6. In the original RP, the total basic fee for land acquisition and house demolition were not divided by contracts.

7. In the updated RP, latest survey and calculation indicate that the total basic fee for land acquisition under the packages Works-HS-3, Works-SX-2, Works-SX-7, Works-SX-9, Works-XN-3, Works-XN-4, Works-XN-5, Works-XN-6, and Works-XN-7 is CNY1,869,725. Together with the cost of resettlement planning and design fee, taxes, and the contingency cost and other expenses, the final total resettlement cost is CNY 2,098,197.6.

Implementation schedule changes

8. It is planned that construction of the packages Works-HS-3, Works-SX-2, Works-SX-7, Works-SX-9, Works-XN-3, Works-XN-4, Works-XN-5, Works-XN-6, and Works-XN-7 will be commenced in December 2022 and completed in December 2024. The land acquisition will be commenced in November 2022 and completed by May 2023 as scheduled.

Endorsement Letter

9. The People's Government of Huangshan City had, through the Ministry of Finance of the People's Republic of China, applied a loan from the Asian Development Bank to finance Anhui Huangshan Xin'an River Ecological Protection and Green Development Project (the "project") and thus the implementation of this project shall meet the social safeguard policies of Asian Development Bank. This Updated Resettlement Plan for Packages Works-HS-3 Xinhua Xiang Ecological Forestry Park; Works-SX-2 She County Urban Storm and Sewer Line Improvement Project (2); Works-SX-7 Ecotourism of Xin'an River (She County Section); Works-SX-9 Xitou Yancun Water Supply Project; Works-XN-3 Xiuning County Ecological Village Construction Project-Shangshan (1); Works-XN-4 Xiuning County Ecological Village Construction Project-Shangshan (2); Works-XN-5 Xiuning County Ecological Village Construction Project-Shangshan (3); Works-XN-6 Xiuning County Ecological Village Construction Project – Xikou; and Works-XN-7 Xiuning County Ecological Village Construction Project – Wucheng represents a critical requirement of the Asian Development Bank and a basis for land acquisition and resettlement under the subproject packages Works-HS-3, Works-SX-2, Works-SX-7, Works-SX-9, Works-XN-3, Works-XN-4, Works-XN-5, Works-XN-6, and Works-XN-7. This updated Resettlement Plan is prepared subject to the laws and regulations of the local government and the People's Republic of China; and ADB safeguard policy requirements on involuntary resettlement, and based on preliminary design documents and DMS results. In addition, for successful and smooth implementation of the resettlement work, this updated Resettlement Plan stipulates also specific measures for resettlement and the arrangements for implementation and monitoring.

10. The People's Government of Huangshan City hereby approves and acknowledges the contents of this updated Resettlement Plan and commits to include the budget funds outlined in this updated Resettlement Plan into the general budget of subproject packages Works-HS-3, Works-SX-2, Works-SX-7, Works-SX-9, Works-XN-3, Works-XN-4, Works-XN-5, Works-XN-6, and Works-XN-7 and allocate such funds in full amount as scheduled. The People's Government of Huangshan City has discussed with related agencies and authorities and got their consensus on this updated RP. As the implementing agency of the subproject packages Works-HS-3, Works-SX-2, Works-SX-7, Works-SX-9, Works-XN-3, Works-XN-4, Works-XN-5, Works-XN-6, and Works-XN-7, Sub-PMOs of She County, Xiuning, and Huangshan of subproject hereby endorse this commitment Letter for corresponding coordination of resettlement work.

Authority	Signature	Date
Sub-PMO of She County		
Sub-PMO of Xiuning County		
Sub-PMO of Huangshan District		

1 Introduction

1. This updated resettlement plan is prepared by Huangshan PMO with assistance of resettlement specialist.

2. The preliminary designs of the 9 packages include, namely: Works-HS-3 Xinhua Xiang Ecological Forestry Park; Works-SX-2 She County Urban Storm and Sewer Line Improvement Project (2); Works-SX-7 Ecotourism of Xin'an River (She County Section); Works-SX-9 Xitou Yancun Water Supply Project; Works-XN-3 Xiuning County Ecological Village Construction Project-Shangshan (1); Works-XN-4 Xiuning County Ecological Village Construction Project-Shangshan (2); Works-XN-5 Xiuning County Ecological Village Construction Project-Shangshan (3); Works-XN-6 Xiuning County Ecological Village Construction Project – Xikou; and Works-XN-7 Xiuning County Ecological Village Construction Project – Wucheng. See details in Table 1-1. The updated impacts of preliminary design are presented in Table 1-2.

Table 1-1 Status of Preliminary Design Approval

City /district / county	Package No. and Name	Approval Status	Approval Date
Huangshan District (1 package)	Works-HS-3 Xinhua Xiang Ecological Forestry Park;	Approved	Jul 24, 2020
She County (3 packages)	Works-SX-2 She County Urban Storm and Sewer Line Improvement Project (2) Works-SX-7 Ecotourism of Xin'an River (She County Section); Works-SX-9 Xitou Yancun Water Supply Project	Approved	Oct 12, 2020
Xiuning County (5 packages)	Works-XN-3 Xiuning County Ecological Village Construction Project-Shangshan 1; Works-XN-4 Xiuning County Ecological Village Construction Project-Shangshan 2; Works-XN-5 Xiuning County Ecological Village Construction Project-Shangshan 3 Works-XN-6 Xiuning County Ecological Village Construction Project – Xikou; Works-XN-7 Xiuning County Ecological Village Construction Project - Wucheng	Approved	May 27, 2020

Table 1-2 Construction scope of preliminary design

Contract	Township/sub-district	Village/community	Scope of construction
Works-HS-3	Xinhua Town	Xinhua, Xinchang, Baishabao	Improving the forestry infrastructure of Baishabao Bamboo Ecological Park (1,000 mu), Xinchang Bamboo Ecological Park (600 mu), and Xinhua Oil Tea Ecological Park (120 mu), constructing a forest trunk road of 650m, a forest working road of 5.24km, a parking lot of 2,300 m2, tourism toilets, and other tourism facilities; extending green agricultural techniques
Works-SX-2	Urban area	/	Storm and sewer line improvement on Zilei, Fufeng, Fuzi, Ping'an, Qingliang Central, Ziyun and Lianhuatang Roads, including reconstructing sewer lines of 5.92km and constructing storm lines of 5.92km
Works-SX-7	Jiekou Town, Xiaochuan Xiang, Shendu Town, Kengkou Xiang, Xinxikou Xiang, Huicheng Town, Xiongqun Xiang, Wuyang Xiang	Jiangbamiao, Yancun	Constructing 12 ecotourism parking lots and associated facilities, and a rural ecological management base along the Anhui-Zhejiang No.1 Scenic Route: 1) 12 ecotourism parking lots totaling 22,900 m2 2) A rest station and a gallery totaling 825 m2 3) A 60 m2 viewing pavilion and a 40 m2 viewing deck 4) An 80 m2 wetland viewing deck, landscaping and land leveling

Contract	Township/sub-district	Village/community	Scope of construction
	and Wangcun Xiang		5) Wastewater treatment for 200 households 6) A footpath of 15,000 m ² , a trail of 60 m ² and landscaping of 2,900 m ²
Works-SX-9	Xitou town	Yancun	Constructing trunk water supply lines of 4.5km from Wangcun Village to Yancun Village, and 37.83km from the urban area to Xitou Village, and 3 booster water supply pump stations
Works-XN-3 Works-XN-4 Works-XN-5 Works-XN-6- Works-XN-7	Shangshan Town, Wucheng Town, Xikou Town	Xibei, Yuetan, Luntang, Zhouxie, Xingzhou and Xi'an	Constructing main supply pipes of 30km, 26 wastewater treatment terminals, 2 pump stations, and sewer lines of 73.3km, and reconstructing a 2,500 m ² scenic trail, a parking lot of 2,000 m ² , 3 viewing pavilions and 2 viewing decks Sewage pipeline engineering, construction of internal road engineering and footpaths, culverts and cover plates, parking lot and public toilet construction and integrated pumping station construction, as well as new pavilions and landscape greening projects, etc.

2 Updated LAR Impacts of the Project

3. According to the DMS, the updated impact types of the subprojects are permanent state-owned land occupation, the permanent land use for rural public infrastructure construction land and temporary land occupation. The measures to reduce resettlement impacts at the preparation stage are as shown in Table 2-1.

Table 2-1 Measures to Reduce Resettlement Impacts at the Preparation Stage

Subcomponent	Option 1	Option 2	Preferred	Resettlement impact reduced
Works-SX-7 Ecotourism of Xin'an River (She County Section)	Occupying 34.16 mu of rural public infrastructure construction land, affecting 140 households with 571 persons, and demolishing a 60m ² house in masonry concrete structure, affecting 1 household with 4 persons	Occupying 23.7 mu of rural public infrastructure construction land, affecting 29 households with 103 persons	Option 2	Reducing occupied rural public infrastructure construction land by 10.46 mu, affecting 111 less households with 468 persons, and avoiding HD, affecting 1 less household with 4 persons

4. During April 2-8, 2022, the task force conducted a preliminary survey on the 9 updated contracts and public consultation in the project area using the methods of literature study, key informant interview, FGD and questionnaire survey, covering population, land resources, residential conditions, income and expenditure, expected resettlement modes, etc.
5. According to the survey, since the 9 updated contracts involve the construction of rural public infrastructure, the land will be supplied by villagers voluntarily. The township governments and village collectives will compensate the occupied land according to the latest compensation rates (APGO [2020] No.32). All involved villages have issued notes on their willingness to provide land as LURPI, which were shown in Appendix 1-6 and Figure 7-1. The 9 updated contracts will occupy 44.38 mu of land, including 3.43 mu of state-owned land, affecting no household, and 40.95 mu of LURPI, affecting 49 households with 186 persons, including 90 females. All APs are Han people, and no ethnic minority or vulnerable group is affected. Compared to the original RP, the occupied collective land area is reduced by 11.36 mu, affecting 109 less households with 470 persons (including 231 females).
6. Temporary land occupation for the 9 updated contracts is caused by pipeline construction mainly. 44.06 mu of land will be occupied temporarily, including 19.94 mu of state-owned unused land, and 24.12 mu of collective land, affecting 47 households with 162 persons. Compared to the original RP, the temporarily occupied state-owned land area is increased by 2.66 mu, and the temporarily occupied collective land area is reduced by 3.93 mu, affecting 7 less households with 26 persons.
7. All affected ground attachments are young crops. Young crops of 65.07 mu will be compensated for (including permanent and temporary land occupation).
8. For details, see Table 2-2.

Table 2-2 updated impacts

N o	Packag e	County/Distr ict	Township	Village	RP									URP									Remarks
					State- owned land		Permanent acquisition of Collective-owned land				Temporary land occupation (mu)			State- owned land		Permanent acquisition/use of Collective-owned land				Temporary land occupation (mu)			
					Are a (mu)	AP s	Area (mu)	APs			Area (mu)	APs		Are a (mu)	AP s	Area (mu)	APs			Area (mu)	APs		
								AH s	AP s	Femal e		AH s	AP s				AH s	APs	Femal e		AH s	APs	
1	Works- HS-3	Huangshan District	Xinhua	Xinhua, Xinchang, Baishabao	/	/	6.6	/	/	/	/	/	/	/	/	2.4	1	4	2	/	/	/	Reducing 4.2 mu of LURPI, involves 1 more household with 4 persons
2	Works- XN-3	Xiuning County	Shangsh an	5 natural villages: Xiafu, Xiafu, Gaotan, Suntian, and Futian	/	/	7.65	3	15	7	6.53	12	38	/	/	7.65	3	15	7	6.53	1 2	38	No change
3	Works- XN-4	Xiuning County	Shangsh an	5 natural villages: Jinzhu, Shuangqiao , Shangyang, Yanchao, and Xiazhuang	/	/	1.17	2	10	5	4.42	9	29	/	/	1.17	2	10	5	4.42	9	29	No change
4	Works- XN-5	Xiuning County	Shangsh an	8 natural villages: Yanli, Zhujiacha, Yangcunjia ng, Tangchuan, Yanli; Yaoxi ; Xinyan, Yantang	/	/	1.09	5	22	10	9.86	19	72	/	/	1.09	5	22	10	9.86	1 9	72	No change

No	Package	County/District	Township	Village	RP									URP									Remarks	
					State-owned land		Permanent acquisition of Collective-owned land				Temporary land occupation (mu)			State-owned land		Permanent acquisition/use of Collective-owned land					Temporary land occupation (mu)			
					Area (mu)	APs	Area (mu)	APs			Area (mu)	APs		Area (mu)	APs	Area (mu)	APs			Area (mu)	APs			
								AHs	APs	Females		AHs	APs				AHs	APs	Females		AHs	APs		
5	Works-XN-6	Xiuning County	Xikou	7 natural villages: Bingtan, Zhujiatie, Shikeng, Taixi, Jiangtan, Dongchong, Dalukou	/	/	1.2	5	24	12	1.35	3	9	/	/	3.5	4	14	7	1.35	3	9	Increasing 2.3 mu of LURPI with sites optimization, less involves 1 household with 10 persons	
6	Works-XN-7	Xiuning County	Wucheng	Xibei, Yuetan, Luntang, Zhouxie, Xingzhou, Xi'an	/	/	0.44	3	14	7	1.69	3	11	/	/	0.44	3	14	7	1.69	3	11	No change	
7	Works-SX-2	She County	/	/	/	/	/	/	/	/	17.28	/	/	/	/	/	/	/	/	13.1	/	/	Reducing 4.18 mu of temporarily occupied state-owned land	
8	Works-SX-7	She County	Jiekou, Xiaochuan, Shendu, Kengkou, Xinxikou, Huicheng, Xiongcu, Wuyang and Wangcun	9 villages in 9 towns, Jiangbamiao, Yancun etc.	3.43	0	34.16	140	571	280	0.27	1	3	3.43	/	23.7	29	103	50	0.27	1	3	Reducing 10.46 mu of LURPI, involves 111 less households with 468 persons	

N o	Packag e	County/Distr ict	Township	Village	RP									URP									Remarks		
					State- owned land		Permanent acquisition of Collective-owned land				Temporary land occupation (mu)			State- owned land		Permanent acquisition/use of Collective-owned land					Temporary land occupation (mu)				
					Are a (mu)	AP s	Area (mu)	APs			Area (mu)	APs		Are a (mu)	AP s	Area (mu)	APs			Area (mu)	APs				
								AH s	AP s	Femal e		AH s	AP s				AH s	APs	Femal e		AH s	APs			
9	Works-SX-9	She County	Xitou	Yancun	/	/	/	/	/	/	3.93	7	26	/	/	1	2	4	2	6.84	/	/	Increasing 1 mu of LURPI, involves 2 more households with 4 persons; increasing 6.84 mu of temporarily occupied state-owned land, and reducing 3.93 mu of temporarily occupied collective land, involves 7 less households with 26 persons		
Total					3.43	0	52.31	158	656	321	45.33	54	188	3.43	0	40.95	49	186	90	44.06	47	162	/		

9. The main income sources of the AHs are tea cultivation and outside employment, accounting for 23% and 63% of household income respectively. Other income sources include property income (3%), business (7%) and agriculture (4%). Therefore, the permanent occupation of LURPI will have little impact on income.
10. The agricultural income loss rates of all AHs are below, in which 36 households with 140 persons have income loss rates of below 5%, and 13 AHs with 46 persons have household income loss rates of 5%-10%, accounting for 26.53%. See Table 2-3.

Table 0-1 Household Income Losses of Permanent Occupation of LURPI

No	Contract package no.	County/District	Township	Village	Household income loss rate				Total	
					1%~5%		5%~10%		HHs	Popula tion
					HHs	Popula tion	HHs	Populati on		
1	Works-HS-3	Huangshan District	Xinhua	Xinhua, Xinchang, Baishabao	1	4	0	0	1	4
2	Works-XN-3	Xiuning County	Shangshan	5 natural villages: Xiafu, Xiafu, Gaotan, Suntian, and Futian	2	10	1	5	3	15
3	Works-XN-4		Shangshan	5 natural villages: Jinzhu, Shuangqiao, Shangyang, Yanchao, and Xiazhuang	2	10	0	0	2	10
4	Works-XN-5		Shangshan	8 natural villages: Yanli, Zhujiacha, Yangcunjiang, Tangchuan, Yanli; Yaoxi ; Xinyan, Yantang	3	14	2	8	5	22
5	Works-XN-6		Xikou	7 natural villages: Bingtan, Zhujiatie, Shikeng, Taixi, Jiangtan, Dongchong, Dalukou	3	10	1	4	4	14
6	Works-XN-7		Wucheng	Xibei, Yuetan, Luntang, Zhouxie, Xingzhou, Xi'an	3	14	0	0	3	14
7	Works-SX-7	She County	Jiekou, Xiaochuan, Shendu, Kengkou, Xinxikou, Huicheng, Xionggun, Wuyang and Wangcun	9 villages in 9 towns, Jiangbamiao, Yancun etc.	20	74	9	29	29	103
8	Works-SX-9	She County	Xitou	Yancun	2	4	0	0	2	4
Total					36	140	13	46	49	186

3 Implementation and Management Institution

11. Same as draft RP.

4 Legal Framework and Policies

4.1 Laws, Regulations and Policies

12. The updated RP of the Subproject packages Works-HS-3, Works-SX-2, Works-SX-7, Works-SX-9, Works-XN-3, Works-XN-4, Works-XN-5, Works-XN-6, and Works-XN-7 has been prepared and will be implemented in line with the laws and regulations of the People's Republic of China (PRC), An'hui Province and Huangshan Municipality, and ADB's requirements on involuntary resettlement in its SPS (2009). See Table 4-1 for applicable laws, regulations and policies.

13. After the draft RP was approved, below policy changes have been made: At the national level, the newly revised "Land Administration Law" came into effect on January 1, 2020; and Regulations on the Implementation of the Land Administration Law of the PRC came into effect since September 1, 2021.

14. At the An'hui provincial and municipal level, Location-based Composite Land Prices for Land Acquisition of Anhui Province (APG [2020] No.32), and Compensation Rates for Ground Attachments and Young Crops on Acquired Land of Huangshan City (HMG [2020] No.34) came into effect since 2020.

15. According to these new policies, LA compensation rates have changed, and the relevant policy standards are the same as or higher than the draft RP.

Table 4-1 Summary of Applicable Regulations and Policies

Level	Policy document	Effective date
PRC	Land Administration Law of the PRC	2020-1-1
	Regulations on the Implementation of the Land Administration Law of the PRC	2021-09-01
	Notice of the General Office of the State Council on Resolutely Stopping the "Non-agriculturalization" of Cultivated Land (GBFMD [2020] No.24)	2020-9-10
	Notice on Issuing the Guidelines on Improving Compensation and Resettlement Systems for Land Acquisition (MLR [2004] No.238)	2004-11-3
	Regulations of the Ministry of Land and Resources on Public Hearing on Land and Resources (MLR [2004] No.22)	2004-5-1
	Decision of the State Council on Deepening the Reform and Rigidly Enforcing Land Administration (SC [2004] No.28)	2004-10-21
	Notice of the State Council on Issues Concerning the Strengthening of Land Control and Adjustment (SC [2006] No.31)	2006-8-31
	Notice of the General Office of the State Council on Forwarding the Guidelines of the Ministry of Labor and Social Security on Doing a Good Job in the Employment Training and Social Security of Land-expropriated Farmers (SC [2006] No.29)	2006-4-10
	Notice on Adjusting Fees for Using Additional Construction Land (CZ [2006] No.48)	2006-11-7
	Property Law of the PRC	2007-3-16
	Notice of the Ministry of Labor and Social Security, and Ministry of Land and Resources on Doing a Good Job in Social Security for Land-expropriated Farmers Practically (MLSS [2007] No.14)	2007-4-28
	Notice on Improving the Fiscal Discounting Policy for Small-amount Secured Loans to Promote Women's Employment and Business Startup (CJF [2009] No.72)	2009-7-27
	Notice of the Ministry of Land and Resources on Doing a Better Job in LA Management (MLR [2010] No.238)	2010-6-26
An'hui	Location-based Composite Land Prices for Land Acquisition of Anhui Province (APG [2020] No.32),	2020-07-23
Huangshan	Compensation Rates for Ground Attachments and Young Crops on Acquired Land of Huangshan City (HMG [2020] No.34)	2020-1-1
ADB	ADB Safeguard Policy Statement-Requirement 2: Involuntary Resettlement	2009-6

4.2 ADB's Policies on Involuntary Resettlement

Same as draft RP.

4.3 Main Differences between the ADB's Policies and PRC Laws as well as Measures taken in RP

Same as draft RP.

4.4 Resettlement Policies for the Project

Same as draft RP.

4.5 Cut-off Date of Eligibility for Compensation

16. The eligibility for compensation has been set on June 30, 2022 that serves as the cut-off date for the updated RP. After this date, the APs should not build, rebuild or expand their houses, should not change the uses of their properties and land, and should not lease their land, lease, sell or purchase their houses. Any variation in physical quantity arising from any of the above acts will not be acknowledged nor compensated.

4.6 Permanent Occupation of LURPI

17. According to the survey, since the 9 updated contracts involve the construction of rural public infrastructure, the land will be supplied by villagers voluntarily. The township governments and village collectives will compensate the occupied land according to the latest compensation rates. All involved villages have issued notes on their willingness to provide land as LURPI, which were shown in Appendix 6 and Figure 7-1. The LA policies applicable to the Project include the Land Administration Law of the PRC, Rural Land Contracting Law of the PRC, Regulations on the Implementation of the Land Administration Law of the PRC, Location-based Composite Land Prices for Land Acquisition of Anhui Province (APG [2020] No.32), etc. For details on compensation rates or standards, see table 4-2.

Table 4-2 updated compensation rates

Item	Division	Range	Unit	Former compensation rate	Compensation rate in 2020	Difference
				Farmland		
LA	Huangshan District	Xinhua town	yuan/mu	35700	41100	+5400
	Xiuning County	Shangshan Town, Wucheng	yuan/mu	36750	43000	+6250
		Xikou Town	yuan/mu	36750	44700	+7950
	She County	Xitou Town, Kengkou Xiang, Shendu Town, Xiaochuan Xiang, Xinxikou Xiang, Jiekou Town, Wuyang Xiang, Changxi Xiang	yuan/mu	36960	43400	+6440
		Huicheng Town	yuan/mu	39900	45000	+5100
		Wangcun Town, Xionggun Town	yuan/mu	37800	43400	+5600
Young crop	Huangshan City		yuan/mu	1280	1500	+220

4.7 Ground Attachments

18. All affected ground attachments are young crops. The compensation rates for young crops and ground attachments are based on Compensation Rates for Ground Attachments and Young Crops on Acquired Land of Huangshan City (HMG [2020] No.34), as shown in Table 4-3.

Table 4-3 Young Crop Compensation Rates and Changes

No.	Land type	Unit	Former compensation rate	Compensation rate in 2020	Difference
1	Irrigated land	yuan/mu	1280	1500	+220
2	Non-irrigated land	yuan/mu	1050	1200	+150

4.8 Entitlement Matrix

19. The updated entitlement matrix is developed in line with relevant policies, regulations and laws, and it provides compensation and resettlement assistance for APs experiencing different impacts under the project. See details in Table 4-4.

Table 4-4 Entitlement matrix

Type of impact	Degree of impact	APs	Compensation and resettlement policy	Compensation rates
Permanent occupation of LURPI	40.95mu	49 households with 186 persons within 3 districts/county	1) Cash compensation: as per <i>the</i> Location-based Composite Land Prices for Land Acquisition of Anhui Province (APG [2020] No.32), Employment: Social, public welfare and project jobs, and small-amount business startup loans will be offered. Free skills training will be offered to the APs.	Compensation rates: 41100~45000 yuan/mu 2) All compensation shall be fully paid before LA.
Temporary land occupation	44.06 mu, including 19.94 mu of state-owned unused land and 24.12 mu of collective land	47 households with 162 persons	Cash compensation and restore the land quality as before project	1500 yuan per mu/year
Ground attachments	Young crops	Proprietors	Cash compensation: as per <i>the</i> Compensation Rates for Ground Attachments and Young Crops on Acquired Land of Huangshan City (HMG [2020] No.34)	Irrigated land: 1,500 yuan/mu; non-irrigated land: 1,200 yuan/mu

5 Resettlement and Income Restoration

5.1 Livelihood Restoration Programs

20. The FSR-DI (design institute) fully considered the impacts of LA, and kept optimizing the project design to minimize LA. The measures to reduce resettlement impacts at the preparation stage are as shown in Table 2-1.

21. According to the survey, since the 9 updated contracts involve the construction of rural public infrastructure, which will benefit the local residents that the land will be supplied by villagers voluntarily. Moreover, the involved households will receive the compensation from the township government and village collectives. All affected villages have issued notes on their willingness to provide land as shown in Appendix 6 and Figure 7-1. Since the AHs no longer rely on land as a major income source, and their income loss rates are below 10%, the Project will have minor impacts on existing household production and living systems. The income losses of the households affected by the permanent occupation of LURPI are as shown in Table 2-3. No ethnic minority or vulnerable group is affected.

22. During April 2-8, 2022, the task force conducted a preliminary survey on the 9 updated contracts and public consultation in the project area using the methods of literature study, key informant interview, FGD and questionnaire survey, covering population, land resources, residential conditions, income and expenditure, expected resettlement modes, etc. According to the survey, all the AHs support the Project and LA, because they think that the Project will further improve local domestic water quality and living environment. All of them prefer cash compensation for LA, and expect to solve their future livelihood problems through various measures. Through consultation with the affected village committees and the AHs during the socioeconomic survey, restoration programs have been developed based on the degree of impact, land availability and their expectations.

23. The affected villages will be subject to cash compensation in strict conformity with the applicable state policies and local regulations. Compensation will be paid to the AHs timely. The AHs may use LA compensation to carry out income-generating activities, such as commerce, transport and investment. Such measures as skills training, non-agricultural employment and social security will be taken in addition to cash compensation. The livelihood and income restoration programs under the Project are as follows:

5.1.1 Cash Compensation

24. The LA policies applicable to the Project include the Land Administration Law of the PRC, Rural Land Contracting Law of the PRC, Regulations on the Implementation of the Land Administration Law of the PRC, Location-based Composite Land Prices for Land Acquisition of Anhui Province (APG [2020] No.32), etc.

25. Distribution programs of LA compensation fees will be developed through adequate consultation, and submitted to town governments for approval. For contracted land, LA and young crop compensation are paid to the AHs without land reallocation; for non-contracted land, LA and young crop compensation is paid to the village for public welfare purposes.

26. The AHs may take non-agricultural livelihood restoration measures with the assistance of the government after receiving cash compensation.

5.1.2 Employment

27. The livelihood restoration will be promoted by offering more job opportunities to affected people. 127 laborers will be affected by permanent land occupation (including 68 males and 59 females, aged 18-60 years), averaging 2.6 laborers per household. During project implementation, more job opportunities will be offered to promote livelihood restoration. The district / county PMOs will make job opportunities first available to the APs in coordination with the local labor and social

security bureaus, and contractors. This will be reported through the internal and external monitoring reports to ADB.

1) Social jobs

28. Since the beginning of 2022, local employment has been promoted in Huangshan City for those unemployed and other residents willing to get employed by various means. A “3-kilometer” employment circle pattern has been applied in 79 villages and communities, covering all urban communities, and a comprehensive employment service network established, composed sub-district centers, community grids and community service points.
29. Since June 2022, Xiuning County has applied a public employment service pattern led by the government, involving social forces, and integrating online and offline to serve laborers and small enterprises through convenient and efficient local employment services. A “3-kilometer” employment circle has been established in 4 urban communities, 30 enterprises have offered 313 public welfare jobs, 12 townships have offered 150 temporary jobs, and enterprises have offered 5,370 jobs. The APs have been assisted in getting employed through job referral and internship, with a success rate of 95.6%.
30. Since the beginning of 2022, She County has been establishing a “3-kilometer” smart employment platform and an employment service network to promote local employment. The ancient town culture and tourism employment circle, east industrial employment circle and new town business employment circle have been built. The “Neighborhood Employment Market” app allows enterprises to release recruitment information timely. It has released 1,363 jobs to date.

2) Public welfare jobs

31. Public welfare jobs such as cleaner, security guard and steward will be generated during project implementation. It is expected that 680 public welfare jobs will be generated per annum, and will be first made available to unemployed APs. Among these jobs, 140 to Huangshan District, 300 to She County and 120 to Xiuning County.

3) Employment under the Project

32. The Project will generate many temporary jobs at the construction stage, and some jobs at the operation stage, mainly including landscaping maintenance managers and workers, cleaners, wastewater treatment terminal stewards, oil tea planters, trimming, weeding and fertilization workers, and parking lot attendants. The people who are affected by LA will have priority to be employed.
33. In addition to the job opportunities generated in the Project, the sub-district labor and social security bureaus will collect employment information and disclose it in the affected communities timely. During employment, employers will enter into labor contracts with employees, and offer necessary pre-job and safety training at pay levels not less than the local minimum wage levels.

4) Skills training

34. An important measure for employment is to improve labor skills through training, which is organized by the district/county labor and social security bureaus mainly.
35. It is learned from interviews that the bureaus offer skills and business startup training to unemployed urban residents (including unemployed LEFs) mainly, including: 1) beauty care and hairdressing, computer, electrician, electric sewing, cooking, maternity matron, old-age care, etc.; 2) nutritionist, massagist, tea art, etc.; and 3) business startup training. Training costs, including material, printing, examination and practice costs, are borne by the district/county labor and social security bureaus. Such training will be first made available to APs, especially those unemployed. It is expected that skills training will be offered to 200

person-times under the Project during 2020-2025, in which at least 50% will be offered to women. See Table 5-1.

36. The Huangshan Municipal PMO will offer skills training to the APs in coordination with the district/county labor and social security bureaus, and the internal and external M&E agencies will report progress and results to the Huangshan Municipal PMO and ADB regularly.

Table 5- 1 Summary of Local Employment Training Programs

Scope	Time	Trainees per session	Trainees per annum	Hours	Agency responsible	Funding source
Beauty care / hairdressing	Apr., Aug	30	15	100	District / county labor and social security bureaus	Special fiscal funds
Old-age care	Mar., Nov.	30	15	100		
Computer operation	May, Oct.	60	30	120		
Marketing	Jun., Sep.	60	30	60		
Business startup	Mar., Jun., Sep., Dec.	30	10	60		
Agricultural skills	Mar. Aug.	20	10	40		
Electrician	Apr.	60	30	140		
Electric sewing	Jul.	60	30	140		
Maternity matron	5 th of each month	30	15	75		
Cooking	Mar., Jun., Sep., Dec.	30	15	75		
Total			200 (at least 50% being women)			

Note: Tea art, nutritionist and massagist training is offered based on sign-in.

5.2 Women's Development Measures

37. Women will have equal opportunities to express their views and concerns about resettlement and other related issues. During resettlement, women's rights and interests will be fully respected, and their important role in social and economic activities, and resettlement given full play to. The PMO has female staff members in order to communicate with women more effectively and ensure women's participation. Job opportunities will be made available to women at the construction and operation stages. The measures to promote women's development under the Project include:

5.2.1 Equal Rights of Women in Resettlement

38. During public consultation, women enjoy equal rights of participation and decision-making. Not less than 45% of participants of village meetings or congresses discussing resettlement programs will be women. All resettlement agencies will have female staff members.

5.2.2 Priority of Women in Livelihood Restoration

39. Affected women will have priority in enjoying the above livelihood restoration measures, especially employment and skills training. At least 30% of the unskilled jobs will be made available to women, and at least 45% of trainees of free skills training will be women.
40. Local women will be encouraged to play an important role in RP implementation and income restoration. In addition, the PMOs will have female staff members who are responsible for information disclosure and communication with women to ensure effective and meaningful participation. Some special measures will be taken under the Project to protect women's equal rights, and promote their income restoration and social development.

5.3 Restoration measures for TLO

41. The preparation work for the pipeline networks start in November 2022 and the land occupation period will last to December 2023. The notices on temporary land occupation and alternative transportation plan will be issued in December 2022. The temporary occupied road will be restored after the construction finished.

6 Organizational Structures and Staffing

6.1 Resettlement Implementation and Management Agencies

6.1.1 Organizational Setup

To ensure successful resettlement as desired, a systematic organizational structure must be established during project implementation in order to plan, coordinate and monitor resettlement activities. Since resettlement is a very comprehensive task that requires the assistance and cooperation of different departments, the Huangshan Municipal PMO, land and resources bureau, etc. will participate in and support resettlement implementation. Each affected township or village has 3-4 chief leaders responsible for resettlement. The agencies responsible for LA and HD in the Project are:

- Huangshan Project Leading Group
- Huangshan Municipal PMO
- Huangshan District, She County and Xiuning County Project Leading Groups
- Huangshan District, She County and Xiuning County PMOs
- Huangshan District, She County and Xiuning County Municipal Administration Offices
- Huangshan District, She County and Xiuning County Natural Resources Bureaus
- Affected township governments
- Affected village committees
- Design agency
- External M&E agency
- Other agencies concerned: women's federations, labor and social security bureaus

6.1.2 Organizational Responsibilities

- **Huangshan Project Leading Group**
Making overall arrangements and decisions, leading the implementation of the Project, and coordinating major issues
- **Huangshan Municipal PMO**
 - 1) Appointing a resettlement consulting agency to conduct resettlement preparation
 - 2) Coordinating the consulting agency with other agencies concerned
 - 3) Coordinating the progress of construction and resettlement
 - 4) Supervising the disbursement of resettlement funds
 - 5) Coordinating the work of agencies concerned
 - 6) Coordinating the work of the ADB resettlement experts at the preparation and implementation stages
 - 7) Training the resettlement staff of the district/county PMOs
- **Huangshan District, She County and Xiuning County Project Leading Groups**
Making arrangements and decisions, leading the implementation of the Project, and coordinating major issues under the leadership of the Huangshan Project Leading Group
- **Huangshan District, She County and Xiuning County PMOs**
 - 1) Coordinating the work of agencies concerned
 - 2) Coordinating the work of the ADB resettlement experts at the preparation and implementation stages
- **Huangshan District, She County and Xiuning County Municipal Administration Offices**
 - 1) Applying land planning and construction permits with competent authorities
 - 2) Organizing discussions and giving publicity to resettlement policies
 - 3) Appointing agencies to implement the RP
 - 4) Raising, supervising and managing resettlement funds
- **Huangshan District, She County and Xiuning County Natural Resources Bureaus**
 - 1) Identifying the project area and conducting the socioeconomic analysis together with the design staff
 - 2) Participating in RP preparation and supporting its implementation
 - 3) Organizing discussions and giving publicity to resettlement policies
 - 4) Conducting the DMS

- 5) Handling LA procedures
 - 6) Taking charge of LA compensation and resettlement
 - 7) Managing LA compensation and resettlement files
 - 8) Assisting the external M&E agency in its fieldwork;
 - 9) Preparing LA progress reports, and submitting them to ADB and the PMO
- **Affected township governments**
- 1) Participating in the socioeconomic survey and assisting in preparation of the RP;
 - 2) Organizing public participation and communicating the resettlement policies;
 - 3) Implementing, inspecting, supervising and recording all resettlement activities;
 - 4) Supervising the disbursement and management of LA compensation fees;
 - 5) Supervising LA;
 - 6) Reporting LA, HD and resettlement information to the PMO;
 - 7) Handling grievances and appeals arising from resettlement;
 - 8) Handling resettlement issues
- **Affected village committees**
- 1) Participating in the socioeconomic survey and DMS;
 - 2) Organizing public participation and communicating the resettlement policies;
 - 3) Organizing resettlement activities;
 - 4) Handling grievances and appeals of the APs, and reporting their comments and suggestions to the PMO
- **Huangshan District, She County and Xiuning County Labor and Social Security Bureaus**
Offering skills training
- **Design agency**
At the planning and design stage, it will survey the physical indicators of LA and HD, environmental capacity, usable resources, etc. accurately, and assist the governments in the project area in developing resettlement programs, preparing budgetary investment estimates for compensation for LA and HD, and preparing the relevant drawings.
At the implementation stage, it will submit the design documents, technical specifications, drawings and notices to the owner timely, make design disclosure to the PMOs of all levels.
- **External M&E agency**
The Huangshan Municipal PMO has appointed NRRCR with rich experience as the external resettlement M&E agency. Its main responsibilities are:
- 1) observing all aspects of resettlement planning and implementation as an external M&E agency, monitoring and evaluating the effectiveness of resettlement and the social adaptability of the APs, and submitting resettlement M&E reports to ADB;
 - 2) Providing technical advice to the Resettlement Office in data collection and processing.

6.1.3 Organizational Chart

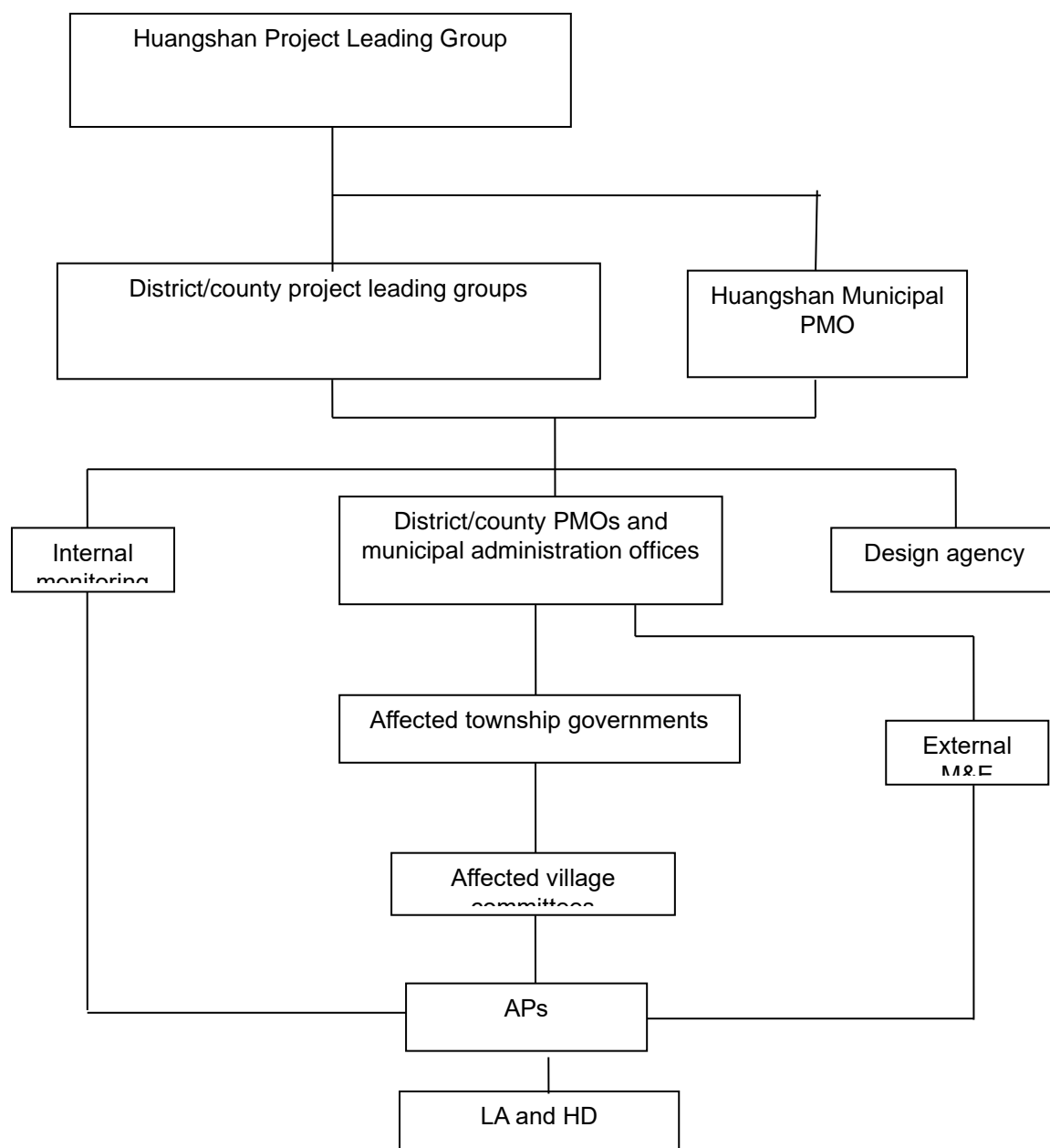


Figure 6- 1 Organizational Chart

6.2 Staffing and Equipment

6.2.1 Staffing

In order to ensure the successful implementation of the resettlement work, all resettlement agencies of the Project have been provided with full-time staff, and a smooth channel of communication has been established. See Tables 6-1 and 6-2.

Table 6- 1 Staffing of Resettlement Agencies

Agency	Workforce		Composition
	Male	Female	
Huangshan Project Leading Group	3	2	Civil servants
Huangshan Municipal PMO	2	2	Civil servants, technicians
District/county project leading groups	2	2	Civil servants
District/county PMOs	2	2	Civil servants, technicians
Affected township governments	2	3	Civil servants

Agency	Workforce		Composition
	Male	Female	
Affected village committees	3	3	Officials, representatives of APs
Design agency	2	2	Senior engineers, engineers
External M&E agency	2	4	Resettlement experts, M&E staff

Table 6- 2 Principals of Resettlement Agencies

No.	Agency	Name	Tel
1	Huangshan Municipal PMO	Yin Jin	18955901938
2	Huangshan District PMO	Qin Ling	13855919161
3	She County PMO	Fang Xiaohui	13399592991
4	Xiuning County PMO	Xu Jinwei	13733064592
5	Shangshan Town	Head Xu	18855986487
6	Wucheng Town	Head Fang	13965506598
7	Xitou Town	Wu Wenbin	18955945959

6.2.2 Equipment

All resettlement agencies of the Project have been provided basic office, transport and communication equipment, including desks and chairs, PCs, printers, telephones, facsimile machines and vehicles.

6.2.3 Organizational Training Program

In order to ensure the successful implementation of the resettlement work, the resettlement staff must be trained under the leadership of the Huangshan Municipal PMO, and district/county labor and social security bureaus.

A staff training and human resources development system for the municipal-, county-, township- and village-level resettlement agencies will be established. Training will be conducted in such forms as expert workshop, skills training course, visiting tour and on-site training. See **Error! Reference source not found..**

- ADB's resettlement policy and principles
- Differences between ADB and PRC policies
- Resettlement implementation planning and management
- Points requiring attention during resettlement implementation
- Resettlement M&E

Table 6- 3 Operational Training Program of Resettlement Agencies

No.	Agency responsible	Scope	Trainees	Time
	A	B	C	D
Completed training				
1	Huangshan Municipal PMO	ADB's resettlement policy	Staff of county / district PMOs (15)	December 4, 2021
2	Huangshan Municipal PMO	Resettlement policies and practice	Staff of county / district PMOs (10)	May 3, 2022
Planned training				
1	Huangshan Municipal PMO	Updates of state policies on LA and HD	Staff of county / district PMOs	2022-2024
2	Huangshan Municipal PMO	Experience and lessons in resettlement from other places	Staff of county / district PMOs	2022-2024
3	Huangshan Municipal PMO	Computer operation and data processing	Staff of county / district PMOs	2022-2024
4	TA consultants at the implementation stage	Resettlement procedures and policies for ADB-financed projects	Township resettlement teams	2022-2024
5	TA consultants at the implementation stage	Resettlement policies and practice	Township resettlement teams	2022-2024

7 Public Participation, Consultation and Grievance Redress Mechanism

7.1 Public Participation and Consultation

42. At every stage of project, the Huangshan Municipal and district / county PMOs, township governments, and IAs attach great importance to public participation and consultation.

43. At the preparation stage, the Huangshan Municipal PMO collected comments on the Project by means of newspaper, Web, broadcast, TV, etc. many times, and disclosed the RP disclosure information.

44. At the RP updating stage: In 2021, the task force, Huangshan Municipal and district/county PMOs, and IAs visited all construction sites of the Project. It was found that the safety measures at construction sites and disclosed project information meet the public participation requirements.

45. From December 2020 to May 2022, the Huangshan, Xiuning and She County governments disclosed the RP information and implementation schedule through village meetings.

46. Issues raised and responses made are as shown in Table 7-1.

Table 7-1 Information Disclosure and Public Participation Activities¹

No.	Time	Topic of public participation	Venue	Participants	# of participants	Females	Issues Raised by APs	Responses and Actions
1	2021.12.5-12.10	Informed participation and construction, avoidance of impacts, land compensation, livelihood restoration and development in the 7 counties / districts	Local PMOs, township governments, village committees, task force	Local social development officers, township and village officials, APs, task force	80	36	Villagers support the Project, and give opinions on site selection, and expect to further reduce impacts.	Optimize the project design to reduce LAR impacts.
2	2021.12.10-12.11	Discussion on the pump station land within Xikou village	Local PMOs, township governments, village committees, task force	Local social development officers, township and village officials, APs, task force	18	4	Villagers are satisfied with compensation rates, and expect compensation to be paid fully and timely.	Determine the compensation rates strictly conform with the local policies, and adopt public supervision; establish audit, grievance redress and external M&E mechanisms to supervise fund disbursement.
3	2022.4.2-4.8	Discussion on the pump station land within Hongcun village and Xiafu village etc	Local PMOs, township governments, village committees, task force	Local social development officers, township and village officials, APs, task force	46	21	Villagers expect that income and livelihood impacts be minimized.	Optimize the project design to reduce LAR impacts.
4	2022.5.3-5.4	Information and data collection in Kangtou village and Xipo Village In Xiuning County	Local PMOs, township governments, village committees, task force	Local social development officers, township and village officials, APs,	16	2	Villagers are willing to supply land for the Project voluntarily;	Strengthen employment and offer skills training; grant preferential loans; establish a grievance redress

No.	Time	Topic of public participation	Venue	Participants	# of participants	Females	Issues Raised by APs	Responses and Actions
				task force			women expect skills training.	mechanism to respond to concerns timely.
Total					160	63	/	/



西坡村村民代表大会



西坡村西坡村泵站用地位置图

Village congress in Xipo Village and site of pump station



溪头村村民代表大会



溪头村石榴村组进口泵站用地位置图

Village congress in Xitou Village and site of pump station



Village congress in Xiafu Village (April 2, 2022)

霞阜村关于亚行项目用地情况的说明

亚行项目办：
贵办关于项目建设用地需求的通知已收悉（村污水处理项目）。为此，我村于2022年4月2日召开村民代表大会，商讨该项目用地事宜。

上述地块已由我村流转至村集体。鉴于该项目污水处理等设施建设后可以有效改善我村饮水安全问题，使广大村民受益。因此，经村委会讨论研究，我村同意将上述土地交由亚行项目建设使用。

特此说明。

休宁县霞阜村村民委员会
2022年4月2日

附件：1. 会议照片
2. 拟建未利用地照片

Note of Xiafu Village on land use for the Project: The site is located on LURPI, which will be used for the Project as resolved by the village committee. (April 2, 2022)



杨庄村关于亚行项目用地情况的说明




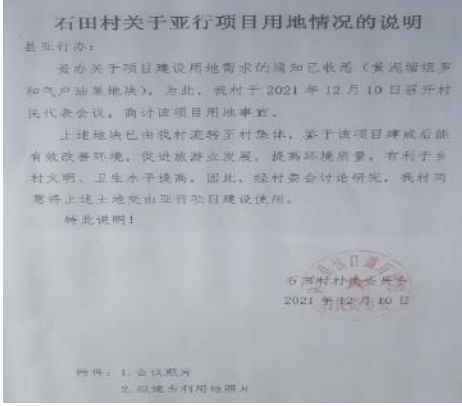
亚行项目办：

贵办关于项目建设用地需求的通知已收悉（村污水处理项目）。为此，我村于2022年4月2日召开村民代表大会，商讨该项目用地事宜。

上述地块已由我村流转至村集体。鉴于该项目污水处理等设施建设后可以有效改善我村饮水安全问题，使广大村民受益。因此，经村委会讨论研究，我村同意将上述土地交由亚行项目建设使用。

特此说明。

休宁县杨庄村村民委员会
2022年4月2日

<p>Village congress in Yangzhuang Village (April 22, 2022)</p>	<p>Note of Yangzhuang Village on land use for the Project: The site is located on LURPI, which will be used for the Project as resolved by the village committee. (April 22, 2022)</p>
	
<p>Village congress in Yaoxi Village (April 2, 2022)</p>	<p>Note of Yaoxi Village on land use for the Project: The site is located on LURPI, which will be used for the Project as resolved by the village committee. (April 2, 2022)</p>
	
<p>Village congress in Dongjiawan Village (December 20, 2020)</p>	<p>Note of Dongjiawan Village on land use for the Project: The site is located on LURPI, which will be used for the Project as resolved by the village committee. (December 20, 2020)</p>
	
<p>Note of Shitian Village on land use for the Project: The site is located on LURPI, which will be used for the Project as resolved by the village committee. (December 10, 2021)</p>	<p>Village congress in Shitian Village (December 10, 2021)</p>

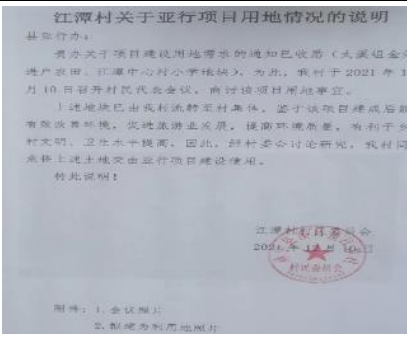

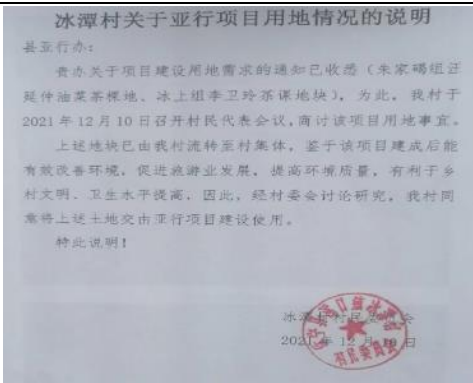

	
<p>Note of Jiangtan Village on land use for the Project: The site is located on LURPI, which will be used for the Project as resolved by the village committee. (December 10, 2021)</p>	<p>Village congress in Jiangtan Village (December 10, 2021)</p>
	
<p>Note of Bingtan Village on land use for the Project: The site is located on LURPI, which will be used for the Project as resolved by the village committee. (December 10, 2021)</p>	<p>Village congress in Bingtan Village (December 10, 2021)</p>

Figure 7-1 Participatory meetings for land use

7.2 Grievances Redress Mechanism

47. Appropriate measures have been taken for the subcomponents that have broken ground to mitigate adverse impacts. By the end of December 2021, no grievance on construction had been received for the constructed packages.

2) Grievance redress mechanism

48. According to the survey, the existing grievance redress channels in the project area are: 1) Villagers may reflect complaints and suggestions to their village committees, which is the main grievance redress channel; 2) Villagers may reflect complaints and suggestions to their sub-district offices; and 3) Villagers may reflect complaints and suggestions to the complaint handling office of the county government. All APs may maintain their rights and interests through the above channels.

49. A project level grievance redress mechanism has been established to ensure the successful implementation of resettlement plan.

50. Stage 1: If any right of any AP is infringed on in any aspect of LA, HD and resettlement, he/she may report this to village/community committee, which shall record such appeal and solve it together with the village committee or the AP within two weeks.

51. Stage 2: If the appellant is still dissatisfied with the disposition of Stage 1, he/she may file an appeal to the township government after receiving such disposition, which shall make a disposition within two weeks.

52. Stage 3: If the appellant is still dissatisfied with the disposition of Stage 2, he/she may file an appeal to the district/county PMO after receiving such disposition, which shall make a disposition within two weeks.

53. Stage 4: If the appellant is still dissatisfied with the disposition of Stage 3, he/she may file an appeal to the Huangshan PMO within one month after receiving such disposition, which shall make a disposition within 4 weeks.

54. At any stage, an AP may bring a suit in a local court directly in accordance with the Administrative Procedure Law of the PRC.

55. Affected persons can also submit complaints to ADB which will first be handled by the project team. If an affected person is still not satisfied and believes he/she has been harmed due to non-compliance with ADB policy, s/he may submit a complaint to ADB's Accountability Mechanism.^①

56. All agencies will accept grievances and appeals from the APs for free, and costs so reasonably incurred will be disbursed from contingencies. During the whole construction period of the Project, these appeal procedures will remain effective to ensure that the APs can use them to address relevant issues. The above grievance redress system will be further communicated to the APs at a meeting or through the updated RP, so that the APs know their right of appeal. In addition, the appeal process will be further published to the affected population on mass media.

57. In addition, the APs may file grievances and appeals directly with the external M&E agency, or the legal, disciplinary inspection and complaint handling departments of Huangshan Municipal Government.

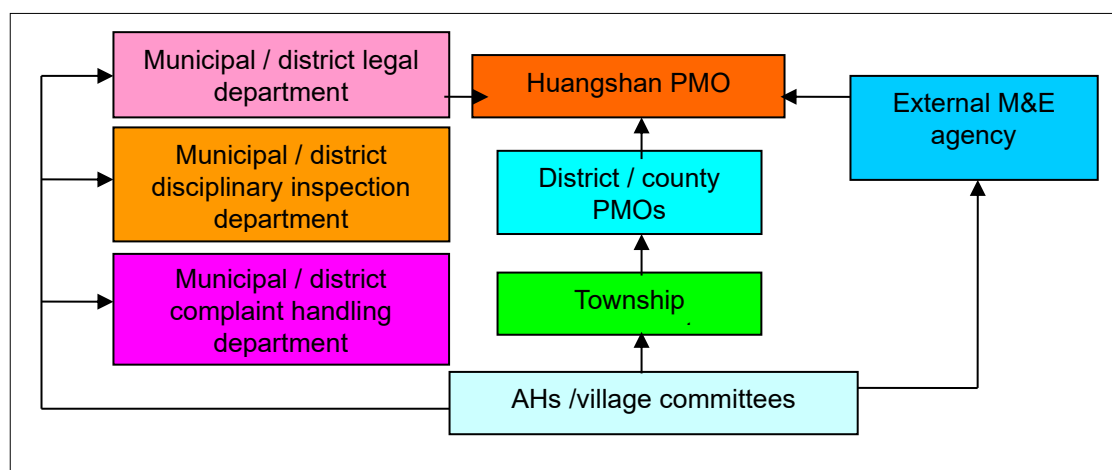


Figure 7- 2 Grievance Redress Flowchart

58. The resettlement agencies have appointed staff members to collect and accept grievances and appeals from the APs specifically. See Table 7-2.

Table 7-2 Contact Information for Grievance Redress

City / district / county	Agency	Name	Address	Tel
Huangshan City	Huangshan Municipal PMO	Yin Quan	4/F, building of the municipal government	18955901938
Huangshan District	Huangshan District PMO	Qin Ling	Room 619, building of the municipal government, Tunxi District	13805590027
She County	She County PMO	Fang Xiaohui	No.18 ZiyangStreet, She County	13399592991
Xiuning County	Xiuning County PMO	Xu Jinwei	North of Haiyang No.2 Primary School, Shuyuan Road, Xiuning County	13733064592

^① For further information, see: <https://www.adb.org/who-we-are/accountability-mechanism/main>.

8 Budget and Source of Funds

8.1 Budget

59. In the total budget, direct resettlement expenses include the compensation for land acquisition, and administrative fees, training fees, taxes and contingency costs, etc. Livelihood and restoration budget will be included in the regular work of the implementation agencies and will not be separately calculated.

60. In the original RP, the total basic fee for land acquisition and house demolition were not divided by contract no.

61. In the updated RP, latest survey and calculation indicate that the total basic fee for land acquisition under the Subproject packages Works-HS-3, Works-SX-2, Works-SX-7, Works-SX-9, Works-XN-3, Works-XN-4, Works-XN-5, Works-XN-6, and Works-XN-7 is CNY 1,869,725. Together with the cost of resettlement planning and design fee, taxes, and the contingency cost and other expenses, the final total resettlement cost is CNY2,098,197.6. See the table 8-1 below for more details:

Table 8-1 Budget of Resettlement Cost under the Subprojects

No.	Item	Location	Impacts (mu)	Updated RP		
				Compensation rate (yuan/mu)	Subtotal (yuan)	Percent (%)
1	Basic resettlement costs				1869725	89.11%
1.1	Compensation for farmland acquisition	She, Xiuning and Huangshan	40.95	41100-45000	1772120	84.46%
1.2	Ground attachments	She, Xiuning and Huangshan	40.95	1500	61425	2.93%
1.3	Compensation for temporary land occupation	She County	24.12	1500	36180	1.72%
2	Planning and design costs (8% of basic costs)				149578	7.13%
3	Training costs (3% of basic costs)				53163.6	2.53%
4	LA taxes and fees (36%)				22113	1.05%
5	Contingencies (10% of basic costs)				3618	0.17%
6	Total				2098197.6	100.00%

Note: External M&E costs have been included in the budget of the institutional capacity building component.

8.2 Annual Plan of Resettlement Funds

62. To avoid impacts to the production and living conditions of the affected population, investment will be made by stage before the construction and during the implementation of the Subproject. See Table 8-2 for details of the investment plan for resettlement.

Table 8-2 Annual Investment Plan for Resettlement

Year	2022	2023	2024
Investment (CNY)	1,678,558.08	209,819.76	209,819.76
Percentage (%)	80%	10%	10%

8.3 Management and Appropriation of Resettlement Funds

63. Same as the draft RP.

9 Resettlement Implementation Schedule

9.1 Principles of Resettlement Action

64. According to the implementation schedule of the packages Works-HS-3, Works-SX-2, Works-SX-7, Works-SX-9, Works-XN-3, Works-XN-4, Works-XN-5, Works-XN-6, and Works-XN-7, construction will be commenced on December 2022 and completed in December 2024, with the construction period lasting for nearly 24 months. For the purpose of making the resettlement schedule match the construction schedule of the Subproject packages Works-HS-3, Works-SX-2, Works-SX-7, Works-SX-9, Works-XN-3, Works-XN-4, Works-XN-5, Works-XN-6, and Works-XN-7, it is planned that the land acquisition work will start in November 2022 and end in May 2023. Basic principles for resettlement include:

- 1) Land acquisition and compensation shall be completed before the commencement of civil works under the Subproject. The final commencement date shall be determined according to updated needs of land acquisition and resettlement.
- 2) In the process of resettlement, the affected population shall be granted with the opportunity to participate in the subproject. It is required that before the commencement of construction under the subproject, the scope of land acquisition shall be announced, resettlement brochures shall be released, and public participation work shall be arranged.
- 3) Compensation funds shall be paid directly to the related property owner in full and in 3 months after the approval of the compensation and resettlement scheme for land acquisition; no organization or individual may use such compensation on behalf of the aforesaid property owner or take any discount in the compensation funds for whatever reason.

9.2 Timeline for the Resettlement Work

65. This resettlement work schedule for the Subproject packages Works-HS-3, Works-SX-2, Works-SX-7, Works-SX-9, Works-XN-3, Works-XN-4, Works-XN-5, Works-XN-6, and Works-XN-7 is determined in view of the timeline of preparatory and implementation activities for land acquisition, and resettlement work. The final schedule can be adjusted as appropriate due to changes in the overall timeline of the Subproject packages Works-HS-3, Works-SX-2, Works-SX-7, Works-SX-9, Works-XN-3, Works-XN-4, Works-XN-5, Works-XN-6, and Works-XN-7. See Table 9-1 for more details.

Table 9-1 Timeline for the Implementation of Resettlement Work

No.	Task	Target	Agencies in charge	Time	Remarks
1	Information disclosure				
1.1	RIB	Affected townships and villages	Huangshan and district/county PMOs	Aug. 2022	Completed
1.2	Disclosure of the RP on ADB's website		Huangshan and district/county PMOs	Nov. 2022	To be completed
2	RP update and resettlement budget approval				
2.1	DMS	Affected townships and villages		Jun. 2022	Completed
2.2	Updating the RP based on the DMS	Affected townships and villages	IA, Huangshan and district/county PMOs	Oct. 2022	This report
2.3	RP and budget approval (compensation rates)	2.0982 million yuan	District/county governments, PMOs	Nov. 2022	
3	LA announcement				
3.1	Disclosing the updated RP	Affected townships and villages	District/county governments, PMOs	Nov. 2022	
3.2	Releasing the LA announcement	Affected townships and villages	District/county governments	Dec. 2022	
4	Compensation agreement				
4.1	Entering into LA compensation agreements and paying compensation	Affected townships and villages	District/county municipal	Jan. 2023	

No.	Task	Target	Agencies in charge	Time	Remarks
			administration offices, village committees		
5	Livelihood restoration measures				
5.1	Payment of compensation for young crops and attachments	AHs	District/county municipal administration offices, township governments	Apr. 2023	
5.2	Implementation of restoration programs	Affected villages	Township governments	Apr. 2023 – Mar. 2026	
5.3	Implementation of training program	Affected villages	District/county labor and social security bureaus	Apr. 2023 – Mar. 2026	
5.4	Hiring APs under the Project	Affected villages	District/county PMOs, labor and social security bureaus, contractor	Apr. 2023 – Mar. 2026	
6	Capacity building of resettlement agencies				
6.1	Training of Huangshan Municipal PMO staff	17 men-times	Huangshan Municipal PMO	Nov. 2022	
6.2	Training of district/county PMO staff	90 men-times	Huangshan Municipal PMO	Dec. 2022	
7	M&E				
7.1	Establishing an internal monitoring mechanism	As per the RP	Huangshan Municipal PMO	Dec. 2022	
7.2	Internal monitoring reporting	Semiannual	Huangshan and district/county PMOs	From Dec. 2022	
7.3	Appointing an external M&E agency	One	Huangshan Municipal PMO	Apr. 2021	Completed
7.4	Baseline survey	Affected townships and villages	External M&E agency	Jan. 2023	
7.5	External monitoring reporting	Semiannual	External M&E agency	Dec. 2022- Jun.2026	Incorporated with the external M&E on the Project
7.6	Completion report		Huangshan and district/county PMOs, municipal administration offices	Dec. 2026	
8	Public consultation	District/county municipal administration offices		Ongoing	
9	Grievance redress	District/county municipal administration offices		Ongoing	
10	Disbursement of compensation fees				
10.1	- To district/county municipal administration offices	Initial funds	District/county governments	Jan. 2023	
10.2	- To township governments	Initial funds	District/county municipal administration offices	Feb. 2023	
10.3	- To AHs	Initial funds	Township governments	Jun. 2023	
11	Commencement of civil construction				
11.1	9 updated contracts	District/county municipal administration offices		Apr. 2023	

10 Monitoring and Evaluation

In order to ensure the successful implementation of the RP and realize the objectives of resettlement properly, LA, HD and resettlement activities of the Project will be subject to periodic M&E according to ADB's resettlement policy, including internal and external monitoring.

10.1 Internal Monitoring

Internal monitoring will be conducted by the Huangshan Municipal PMO, district/county PMOs, and other county authorities concerned. The PMO will develop a detailed internal monitoring plan for LA and resettlement, including:

- 1) Investigation, coordination of and suggestion on key issues of the resettlement and implementing agencies during implementation;
- 2) Restoration of the household income of the APs after LA;
- 3) Resettlement and income restoration of vulnerable groups;
- 4) Payment, use and availability of compensation fees for resettlement;
- 5) Disbursement, use and availability of LA compensation fees;
- 6) Resettlement training and its effectiveness; and
- 7) Establishment, staff training and working efficiency of resettlement management agencies.

The Huangshan Municipal PMO will submit an internal monitoring report to ADB semiannually. Such report should indicate the statistics of the past 6 months in tables, and reflect the progress of LA, resettlement and use of compensation fees through comparison.

10.2 External Monitoring

According to ADB's policies, the PMO will appoint NRCR, which is qualified, independent and has over 15 years of experience in ADB-financed projects as the external resettlement monitoring agency.

The external M&E agency will conduct follow-up M&E of resettlement activities periodically, monitor resettlement progress, quality and funding, and give advice. It shall also conduct follow-up monitoring of the displaced persons' production level and standard of living, and submit M&E reports to the PMO and ADB.

10.2.1 Scope and Methods

- 1) Baseline survey

The external M&E agency will conduct a baseline survey on the villages affected by LA to obtain baseline data on the sample AHs' production level and living standard. The production level and living standard survey will be conducted semiannually to track variations of the APs' production level and living standard. This survey will be conducted using such methods as panel survey (sample size: 30% of households affected by LURPI, to be sampled randomly), random interview and field observation to acquire necessary information. A statistical analysis and an evaluation will be made on this basis.

- 2) Periodic M&E

During the implementation of the RP, the external M&E agency will conduct periodic follow-up resettlement monitoring semiannually of the following activities by means of field observation, panel survey and random interview:

- Payment and amount of compensation fees;
- Training;
- Support for vulnerable groups;
- Reconstruction of infrastructure and special facilities;
- Production resettlement and restoration;
- Compensation for lost properties;
- Timetables of the above activities (applicable at any time);
- Resettlement organization;
- Income growth of labor through employment; and
- If APs have benefited from the Project

- 3) Public consultation

The external M&E agency will attend public consultation meetings held during resettlement

implementation to evaluate the effectiveness of public participation.

4) Grievance redress

The external M&E agency will visit the affected villages and groups periodically, and inquire the township resettlement offices and implementing agencies that accept grievances about how grievances have been handled. It will also meet complainants and monitor corrective measures and advice for existing issues so as to make the resettlement process more effectively.

10.2.2 Reporting

The external M&E agency will submit a monitoring or evaluation report to ADB and the PMO semiannually. See Table 10-1.

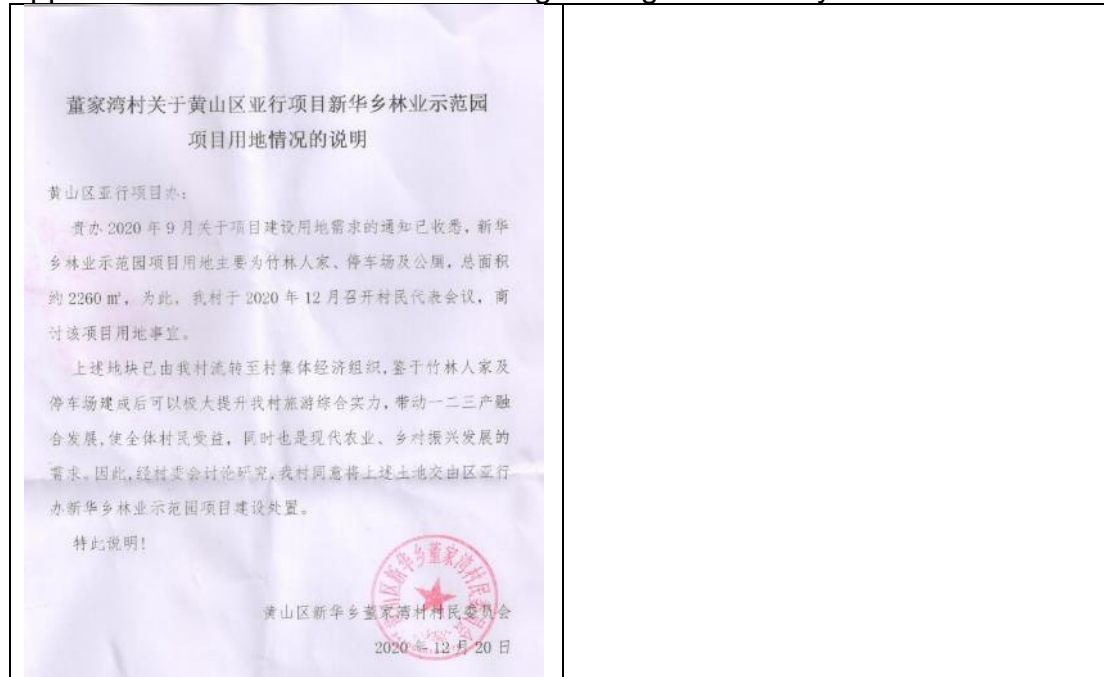
Table 10- 1 M&E Schedule

	Report	Date	Remarks
1	Baseline socioeconomic survey report	Dec. 2022	
2	Monitoring report (No.1)	Dec. 2022	Including the baseline survey report, along with the 4 th round of M&E
3	Monitoring report (No.2)	Jun. 2023	Along with the 5 th round of M&E
4	Monitoring report (No.3)	Dec. 2023	Along with the 6 th round of M&E
5	Evaluation report (No.4)	Jun. 2024	Along with the 7 th round of M&E
6	Evaluation report (No.5)	Dec. 2024	Along with the 8 th round of M&E
7	Evaluation report (No.6)	Jun. 2025	Along with the 9 th round of M&E

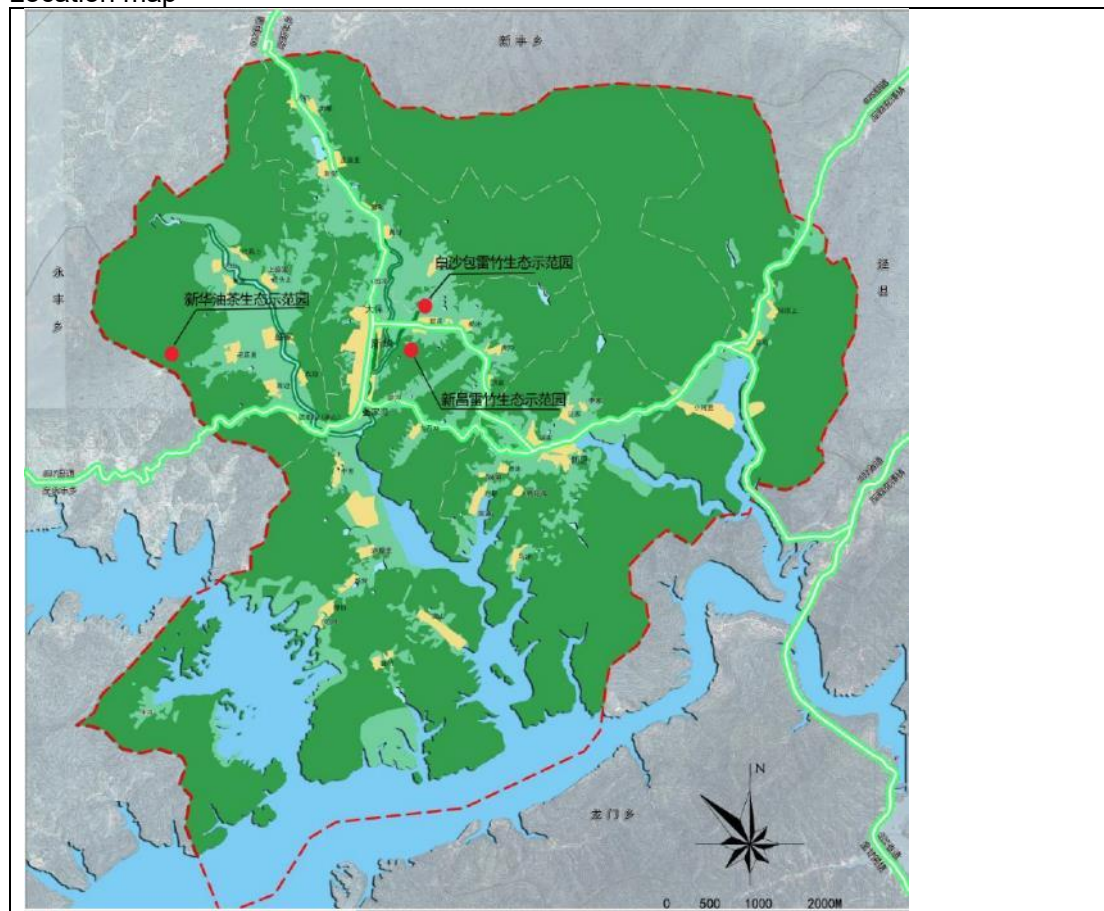
10.3 Post-evaluation

After project implementation, the resettlement activities will be subject to post-evaluation using the theory and methodology for post-evaluation on the basis of M&E. Successful experience and lessons of LA, HD and resettlement will be evaluated to provide experience that can be drawn on for future resettlement. The post-evaluation agency will prepare terms of reference for post-evaluation to establish a system of evaluation indicators, conduct socioeconomic analysis and survey, and prepare the Resettlement Post-evaluation Report for submission to the Huangshan Municipal PMO and ADB. The post-evaluation report is expected to be completed in June 2027.

Appendix 1 Works-HS-3 Xinhua Xiang Ecological Forestry Park



Location map

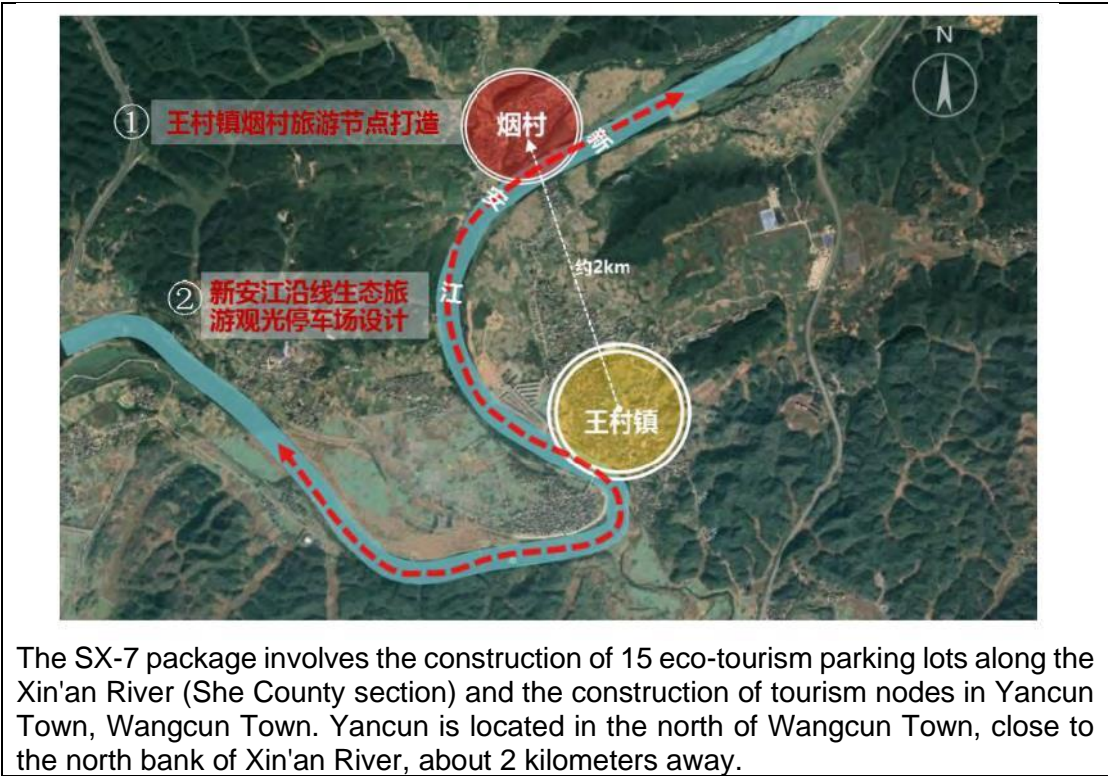




Site photo

Appendix 2 Works-SX-7 Ecotourism of Xin'an River (She County section)

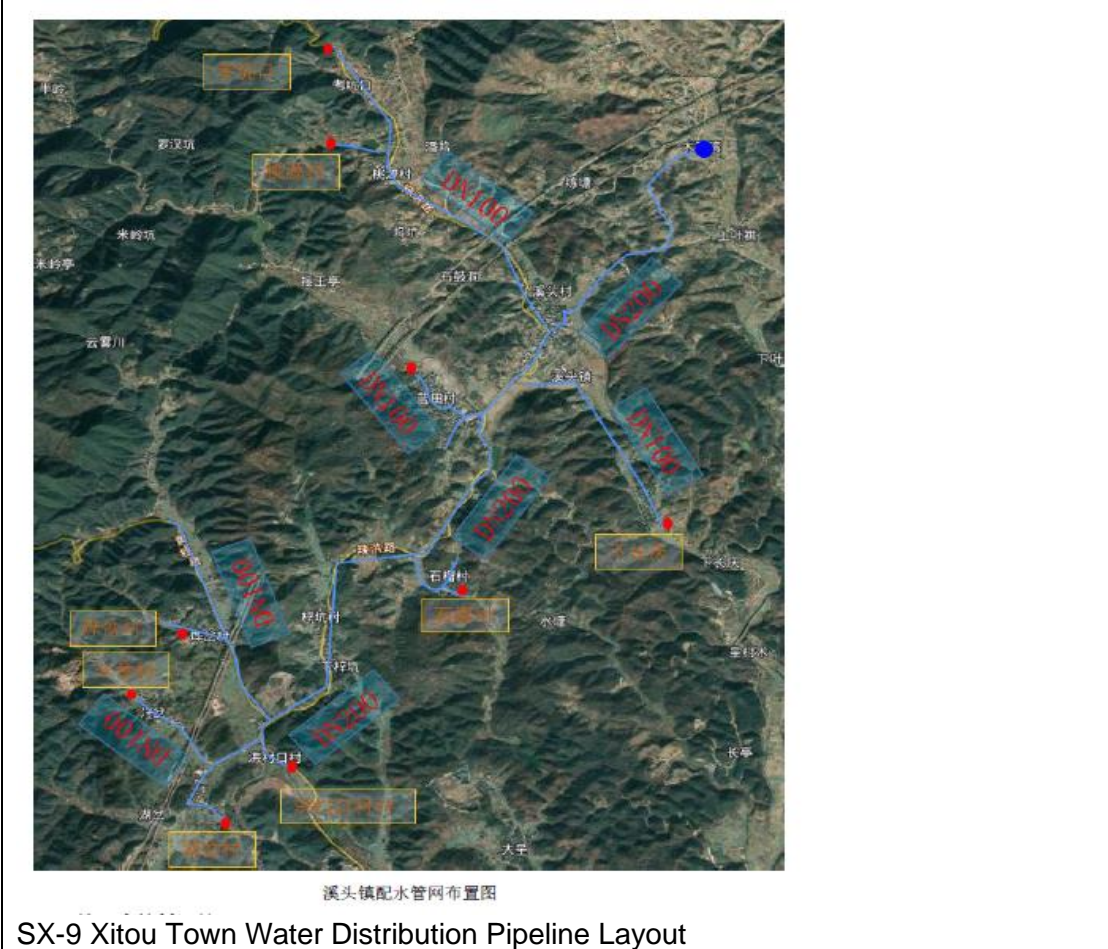
<p>新溪口乡塔坑村关于歙县亚行项目建设用地情况的说明</p> <p>歙县亚行项目办:</p> <p>贵办关于项目用地的需求已收悉(村柑桔园内景观亭、柑橘广场外侧亭子及朝山尖路口停车场),为此我村在 2022 年 3 月 1 日召开村民代表大会商讨该项目用地事宜。</p> <p>上述地块已由我村流转至村集体经济组织。鉴于该地块用于发展村内农业示范基地,建成后能够提升塔坑村基础设施水平和“三口柑桔”品牌影响力,提高村民收入。因此,经村民代表大会讨论研究,我村同意将上述地块交由亚行办用于项目建设。</p> <p>歙县新溪口乡塔坑村村委会 2022 年 3 月 1 日</p>	 <p>朝山尖停车场所在地块</p>
Parking area	



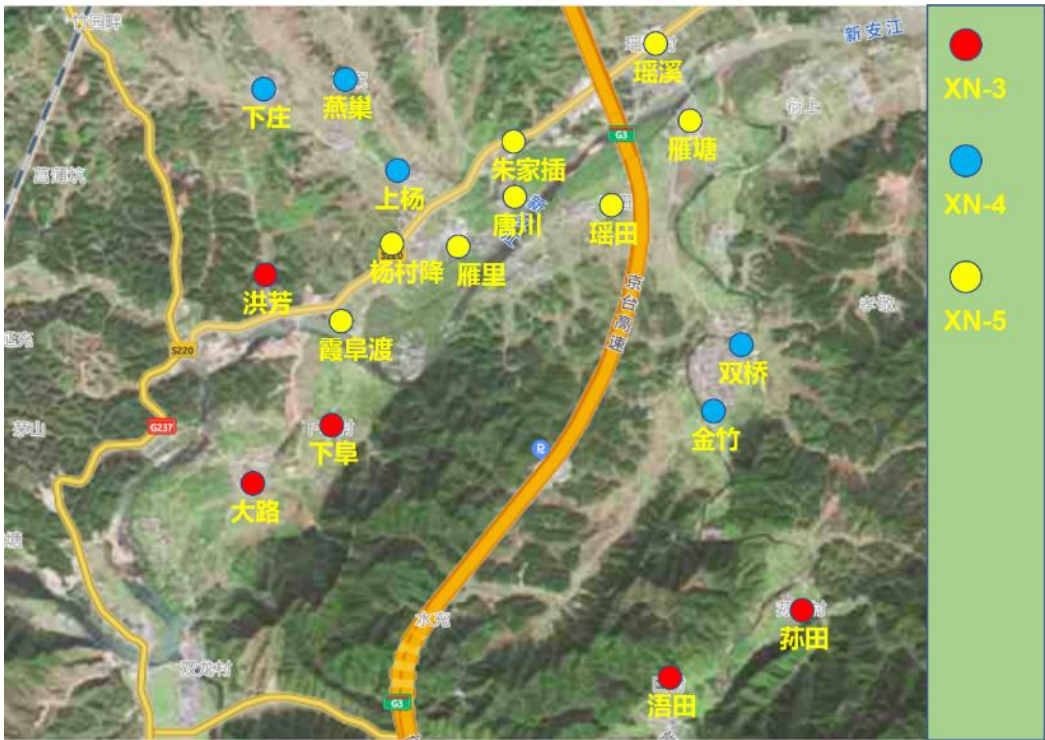
Appendix 3 Works-SX-9 Xitou Yancun Water Supply Project



Xitou water supply project pump station site map and village committee representative meeting






Appendix 4 Works-XN-3, Works-XN-4, Works-XN-5, Xiuning County Ecological Village Construction Project-Shangshan



Location map in Shangnan Town

Site photo

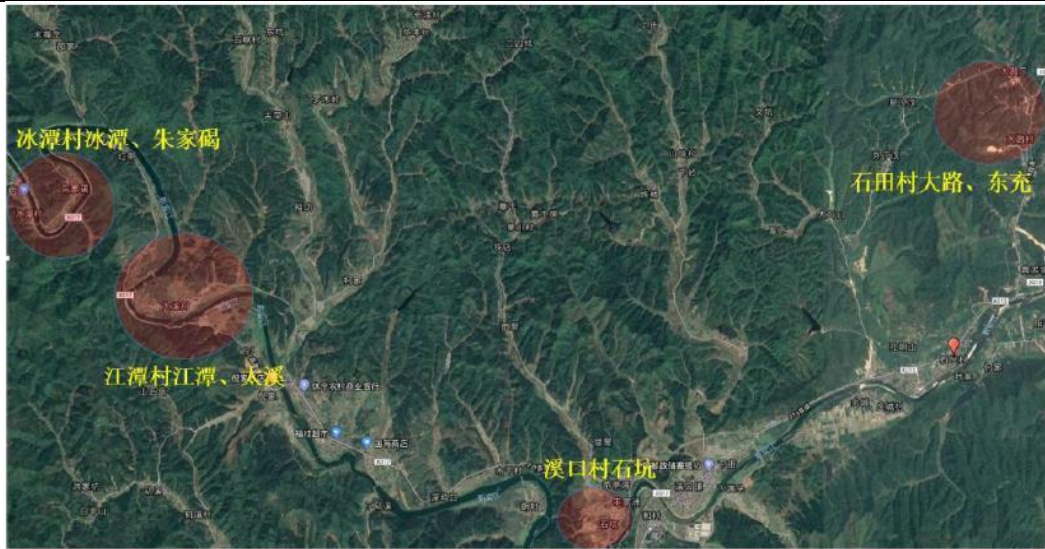
	
Xiafu Village, Shangshan Town	Yangzhuang Village, Shangshan Town
	
Yaoxi Village, Shangshan Town	

Appendix 5 Works-XN-6 Xiuning County Ecological Village Construction Project - Xikou



Meeting for land use in Xikou Village

	<p>The notice from your office on the demand for land for project construction has been received (the farmland of Wu Fenghua, Shikeng Group). For this reason, our village will hold a villager representative meeting on December 10, 2021 to discuss the land use for the project.</p> <p>The above-mentioned plots have been transferred from our village to the village collective. In view of the fact that the project can effectively improve the environment, promote the development of tourism, improve the environmental quality, and contribute to the improvement of rural civilization and sanitation level, after discussion and research by the village committee, The village agreed to hand over the above-mentioned land to the ADB project for construction and use.</p> <p>Hereby explain!</p> <p style="text-align: right;">Xikou Village Committee</p> <p style="text-align: right;">2021.12.10</p>
<p>Xikou Village's Explanation on Land Use</p>	



administrative villages involves in Xikou Town (source: preliminary design)

Site photo



冰潭土地原始照片



东充土地原始照片

Bingtancun Village, Xikou Town






Shitian Village, Xikou Town




江潭土地原始照片

Jiangtancun Village, Xikou Town

Appendix 6 Works-XN-7 Xiuning County Ecological Village Construction Project - Wucheng*

<p>五城镇关于亚行项目用地情况的说明</p> <p>亚行项目办：</p> <p>贵办关于项目建设用地需求的通知已收悉（五城镇生态村庄建设工程）。上述地块已被高铁建设用地征用，属于我镇。鉴于该项目污水终端及管网设施建成后可以解决污水横流问题，有效提高村庄人居环境，使广大村民受益。因此，我镇同意将上述土地交由亚行项目建设使用。</p> <p>特此说明。</p> <p></p> <p>附件：1. 拟建未利用地照片</p>	<p>Explanation on land use for ADB projects in Wucheng Town</p> <p>The notice from your office on the demand for construction land for the project has been received (eco-village construction project in Wucheng Town). The above-mentioned plots have been expropriated by the high-speed railway construction land and belong to our town. Since the sewage terminal and pipe network facilities of the project are completed, the sewage can be solved. The problem of cross-flow can effectively improve the living environment of the village and benefit the majority of villagers. Therefore, our town agrees to hand over the above-mentioned land to the ADB project for construction and use.</p> <p>It is hereby stated.</p> <p>Xiuning County Wucheng Town Government</p>
<p>星洲村关于亚行项目用地情况的说明</p> <p>亚行项目办：</p> <p>贵办关于项目建设用地需求的通知已收悉（五城镇生态村庄建设工程）。为此，我村于2022年2月18日召开村民代表会议，商讨该项目用地事宜（星洲村西岸组）。</p> <p>鉴于该项目污水终端及管网设施建成后可以解决污水横流问题，有效提高村庄人居环境，使广大村民受益。因此，经村委员会讨论研究，我村同意将上述土地交由亚行项目建设使用。</p> <p>特此说明。</p> <p></p> <p>附件：1. 会议照片 2. 拟建未利用地照片</p>	
 <p>Location map</p>	
	
Original photo of Xinzhou Village	

Focus Group Discussion Minute– Xibei Village, Wucheng Town, Xiuning County

Date	May 21, 2022
Venue	Xibei Village and Yuetan Village, Wucheng Town
Organizer	Xiuning PMO, PIU
Participants	Director Xu of Xiuning PMO, Mayor Fang of Wucheng Town, village official and villager representatives of Xibei Village and Yuetan Village, task force
Topics	Land acquisition, temporary land occupation, identification of resettlement impacts, allocation of land compensation funds, project participation willingness and suggestions of APs
Key points and findings	<p>Xiuning County Ecological Village Construction Project – Wucheng (Works-XN-7), will be constructed here. The project requires using part of the land that has been acquired by the high-speed railway station construction (2016). The villagers said that they had received LAR compensation according to the compensation standards for land acquisition in the national and provincial policies, and their livelihoods had been restored. Now their livelihoods have been restored. There are no leftover problems or complaints.</p> <p>Villagers all welcome and support the project construction, they believe that the project construction is a good thing for the Village and the people, and is conducive to improving the living standard and quality of local residents. The villagers expressed their hope that the project would be completed as soon as possible.</p>
Photo	

*After discussing with the township, village committee and villager representatives on 21 May, 2022, it was found that there were no remaining problems or complaints when the land was acquired in 2016 for the highspeed railway construction land.