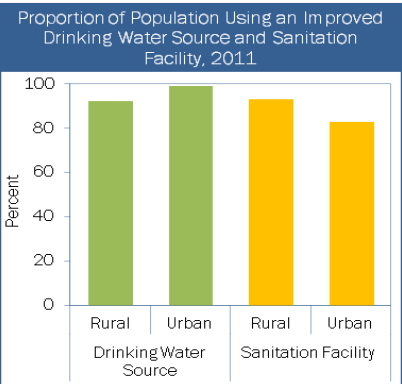
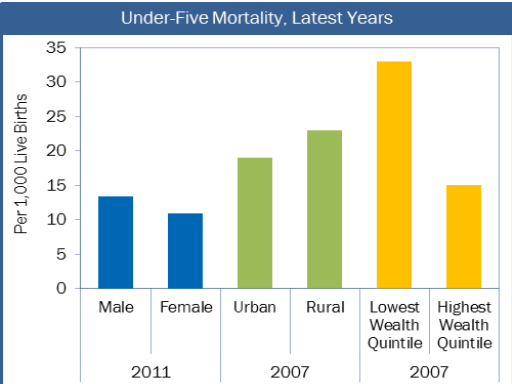
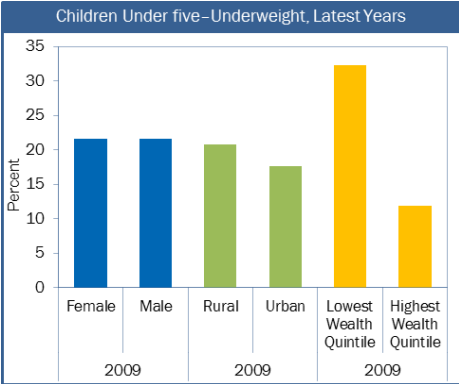


	1990 or Nearest Year	2011 or Latest Year
POVERTY AND INEQUALITY		
Income		
Proportion of population living below the national poverty line ^a <i>percent</i>	26.1 (1991)	8.9 (2010)
by Residence		
Urban	16.3 (1991)	5.3 (2010)
Rural	29.5 (1991)	9.4 (2010)
Proportion of population living below \$2-a-day at 2005 PPP\$ ^a <i>percent</i>	49.5 (1991)	23.9 (2009)
Ratio of income or consumption share of the highest quintile to lowest quintile ^b	4.8 (1991)	5.8 (2010)
Lowest quintile income or consumption share	8.7 (1991)	7.7 (2010)
Highest quintile income or consumption share	41.5 (1991)	44.6 (2010)
Nonincome		
Average years of total schooling (youth and adults)		
Youth (Aged 15–24)	10.6	12.6 (2010)
Male	10.5	12.3 (2010)
Female	10.7	12.8 (2010)
Adults (Aged 25 and over)	8.4	10.8 (2010)
Male	8.8	10.9 (2010)
Female	7.9	10.7 (2010)
Prevalence of underweight children under five years of age <i>percent</i>	33.8 (1993)	21.6 (2009)
by Sex		
Male	...	21.6 (2009)
Female	...	21.6 (2009)
Female-to-male ratio	...	1.0 (2009)
by Residence		
Urban	...	17.7 (2009)
Rural	...	20.8 (2009)
Rural-to-urban ratio	...	1.2 (2009)
by Wealth Quintile		
Lowest	...	32.3 (2009)
Highest	...	11.9 (2009)
Lowest-to-highest ratio	...	2.7 (2009)
Under-five mortality rate <i>per 1,000 live births</i>	29	12
by Sex		
Male	31	13
Female	27	11
Male-to-female ratio	1.2	1.2
by Residence		
Urban	...	19 (2007)
Rural	...	23 (2007)
Rural-to-urban ratio	...	1.2 (2007)
by Wealth Quintile		
Lowest	...	33 (2007)
Highest	...	15 (2007)
Lowest-to-highest ratio	...	2.2 (2007)
PILLAR ONE: Growth and Expansion of Economic Opportunity		
Economic Growth and Employment		
Annualized growth rate of GDP per capita at PPP (constant 2005 PPP\$)	4.3 (1992–1997)	6.1 (2007–2012)
Annualized growth rate of average per capita income or consumption (2005 PPP\$) ^b		
Total	2.5 (1991–2002)	2.0 (2002–2010)
Lowest Quintile	0.2 (1991–2002)	3.7 (2002–2010)
Highest Quintile	3.9 (1991–2002)	1.0 (2002–2010)
Employment-to-population ratio		
Youth (Aged 15–24)	27.7 (1991)	30.8 (2012)
Male	39.9 (1991)	41.4 (2012)
Female	15.2 (1991)	19.8 (2012)
Aged 15 years and over	38.6	50.7 (2010)
Male	59.3 (1993)	72.4 (2010)
Female	25.9 (1993)	31.8 (2010)
GDP per person engaged (constant 1990 PPP\$)	8339	17985 (2012)
Number of own-account and contributing family workers per 100 wage and salaried workers	77.9	69.1 (2009)
by Sex		
Male	68.8 (1993)	63.6 (2009)
Female	51.4 (1993)	80.7 (2009)
Key Infrastructure Endowments		
Electricity consumption <i>per capita kWh</i>	154	449 (2010)
Paved roads <i>percent of total roads</i>	32.0 (1991)	14.9 (2010)
Number of cellular phone subscriptions <i>per 100 people</i>	2.3 (2000)	95.8 (2012)
Depositors with commercial banks <i>per 1,000 adults</i> ^c	1887.5 (2009)	1891.7 (2010)
PILLAR TWO: Social Inclusion to Ensure Equal Access to Economic Opportunity		
Access and Inputs to Education and Health		
School life expectancy (primary to tertiary) <i>years</i>	11.9 (1994)	13.8
by Sex		
Male	11.8 (1994)	13.5
Female	12.0 (1994)	14.2
Pupil–teacher ratio (primary)	29 (1992)	24
Diphtheria, tetanus toxoid, and pertussis (DTP3) immunization coverage among 1-year-olds <i>percent</i> ^d	86 (1992)	99
by Sex ^e		
Male	...	99 (2007)
Female	...	100 (2007)
Male-to-female ratio	...	1.0 (2007)
by Residence ^e		
Urban	...	99 (2007)
Rural	...	100 (2007)
Urban-to-rural ratio	...	1.0 (2007)
by Wealth Quintile ^e		
Lowest	...	98 (2007)
Highest	...	100 (2007)
Highest-to-lowest ratio	...	1.0 (2007)
Physicians, nurses, and midwives <i>per 10,000 population</i> ^f	12.4 (1993)	21.5 (2006)
Physicians	2.1 (1993)	5.1 (2006)
Nurses and Midwives	10.3 (1993)	16.3 (2006)
Government expenditure on education as a percentage of total government expenditure ^g	9.1 (1995)	9.0 (2012)
Government expenditure on health as a percentage of total government expenditure ^g	5.3 (1995)	6.6 (2012)

continued

Sri Lanka

	1990 or Nearest Year	2011 or Latest Year
PILLAR TWO: Social Inclusion to Ensure Equal Access to Economic Opportunity <i>(continued)</i>		
Access to Basic Infrastructure Utilities and Services		
Population with access to electricity <i>percent</i>	76.6 (2008)	76.6 (2010)
by Residence		
Urban	85.8 (2008)	85.8 (2010)
Rural	75.0 (2008)	75.1 (2010)
Urban-to-rural ratio	1.1 (2008)	1.1 (2010)
Share of population using solid fuels for cooking <i>percent</i>	66.1 (2003)	80.7 (2009)
by Residence		
Urban	27.2 (2003)	36.2 (2009)
Rural	75.0 (2003)	87.1 (2009)
by Wealth Quintile		
Lowest	...	92.0 (2003)
Highest	...	23.0 (2003)
Proportion of population using an improved drinking water source <i>percent</i>	68	93
by Residence		
Urban	92	99
Rural	63	92
Proportion of population using an improved sanitation facility <i>percent</i>	68	91
by Residence		
Urban	78	83
Rural	65	93
Gender Equality and Opportunity		
Gender parity in education ^h		
Primary	0.96 (1991)	0.99
Secondary	1.09 (1991)	1.04
Tertiary	0.50 (1994)	1.83
Antenatal care coverage of at least one visit <i>percent of live births</i>	80.2 (1993)	99.4 (2007)
by Residence		
Urban	...	99.4 (2007)
Rural	...	99.4 (2007)
Urban-to-rural ratio	...	1.0 (2007)
by Wealth Quintile		
Lowest	...	99.0 (2007)
Highest	...	99.6 (2007)
Highest-to-lowest ratio	...	1.0 (2007)
Antenatal care coverage of at least four visits <i>percent of live births</i>	...	92.5 (2007)
by Residence		
Urban	...	84.4 (2007)
Rural	...	93.6 (2007)
Urban-to-rural ratio	...	0.9 (2007)
by Wealth Quintile		
Lowest
Highest
Highest-to-lowest ratio
Gender parity in labor force participation (Aged 15 and over) ⁱ	0.47	0.46 (2012)
Percentage of seats held by women in national parliament	4.9	5.8 (2013)
PILLAR THREE: Social Safety Nets		
Social protection and labor rating ^j	3.5 (2005)	3.5 (2012)
Social security expenditure on health as a percentage of government expenditure on health	0.1 (1995)	0.1
Government expenditure on social security and welfare as a percentage of total government expenditure ^k	16.3 (1995)	8.5 (2012)
GOOD GOVERNANCE AND INSTITUTIONS		
Voice and accountability ^k	-0.4 (1996)	-0.5
Government effectiveness ^k	-0.3 (1996)	-0.1
Control of corruption ^k	-0.1 (1996)	-0.4



"..." = data not available, 0 or 0.0 = magnitude is less than half of unit employed, GDP = gross domestic product, kWh = kilowatt-hour, PPP = purchasing power parity.

- a Data are based on consumption.
- b Derived from consumption shares of the highest quintile and lowest quintile groups.
- c Data refer to total number of deposit accounts due to lack of information on deposit account holders.
- d Estimates are based on data officially reported to the World Health Organization (WHO) and the United Nations Children's Fund (UNICEF) by member economies and data reported in publications on health surveys.
- e Estimates are based on household survey data.
- f Estimated using data from Global Health Workforce Statistics (WHO) and population from World Population Prospects: The 2012 Revision.
- g Data refer to central government.
- h Measured as the ratio of female gross enrollment ratio to male gross enrollment ratio.
- i Measured as the ratio of female labor force participation rate to male labor force participation rate.
- j A rating of "1" corresponds to a very weak performance, and a "6" rating to a very strong performance.
- k Presented in standard normal units of the governance indicator, ranging from -2.5 to 2.5 with higher values corresponding to better governance outcomes.

Sources: ADB estimates; Barro and Lee (2013); Child Mortality Estimates available at <http://www.childmortality.org>; Childinfo website (UNICEF) available at www.childinfo.org/index.html, accessed 6 May 2013; country *Multiple Indicator Cluster Survey (MICS)* reports available at UNICEF; electronic files provided by the World Health Organization on 15 June 2012 and 1 July 2012; *Country Performance Assessment Annual Report* (ADB 2013); economy sources; *Financial Access Report 2009 and 2010* (World Bank 2010); Global Health Workforce Statistics (WHO) available at <http://who.int/hrh/statistics/hwfstats/en/index.html>, accessed 12 July 2013; Global Health Observatory Data Repository (WHO) available at <http://apps.who.int/ghodata>; Institute for Statistics Data Centre (UNESCO), accessed 30 May 2013; Inter-Parliamentary Union, accessed 11 July 2013; *Key Indicators of the Labour Market*, 7th ed. (ILO), accessed 30 May 2013; Millennium Indicators Database Online (UNSD), accessed 4 July 2013; PovcalNet Database Online (World Bank), accessed 17 May 2013; STATcompiler and *Demographic and Health Survey (DHS)* reports available at ICF International (2013); *The State of the World's Children Report, 2013* (UNICEF); WHO and UNICEF Joint Monitoring Programme for Water Supply and Sanitation, accessed 15 May 2013; World Development Indicators Online (World Bank), accessed 15 July 2013; *World Energy Outlook* (International Energy Agency 2012); World Population Prospects: The 2012 Revision (UN Population Division), accessed 17 June 2013; World Urbanization Prospects: The 2011 Revision; World Road Statistics 2012 (International Road Federation 2012); World Telecommunication/ICT Indicators Database (ITU), accessed 28 June 2013; Worldwide Governance Indicators (World Bank) available at <http://info.worldbank.org/governance/wgi/index.asp>, accessed 18 April 2013 and 6 June 2013.