

The Social Protection Indicator for the Pacific

Assessing Progress

Efforts to expand social protection coverage in the Pacific are improving, but more needs to be done to make social protection in the subregion more comprehensive, gender equitable, socially inclusive, and sustainable.

Social Protection Coverage

31.2%

of intended beneficiaries



Social Protection Coverage by Program

Social Assistance

20%

Social Insurance

8.7%

Active Labor Market Programs

2.4%



Social Protection Expenditure by Program

Social Assistance

spending averaged 2.1% of aggregate GDP and 1.9% of GDP per capita

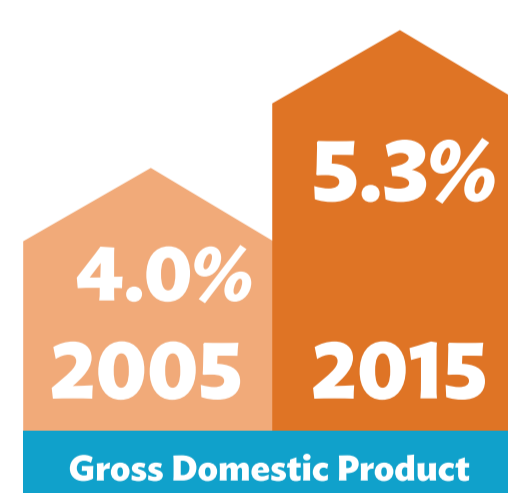
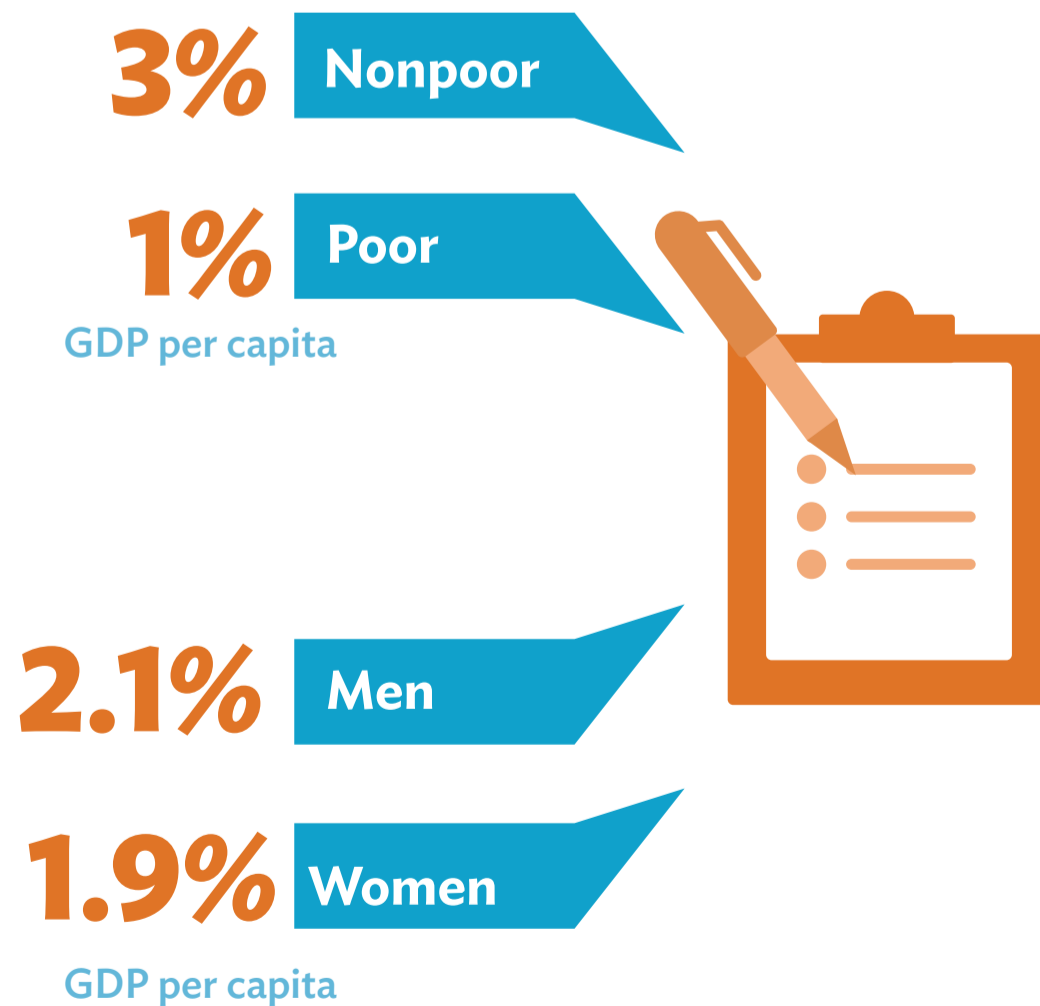
Social Insurance

including pensions and health assistance spending averaged 3.4% of aggregate GDP and 3% of GDP per capita

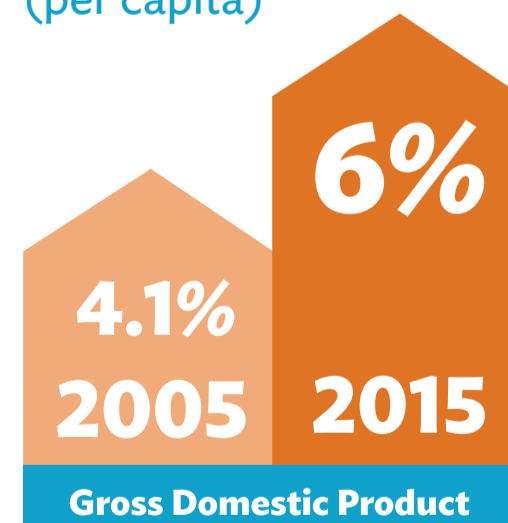
Active Labor Market Programs

spending stood at around 0.5% in both aggregates and per capita GDP terms

Social protection spending in Asia favors nonpoor over poor segment of the population and prioritized men over women



Average social protection expenditure (per capita)



Average social protection expenditure (aggregate GDP)

